



Microresistivity Log

DIGITAL LOG (785) 625-3858

API No.	15-039-21,134-00-00		
Company	Murfin Drilling Company, Inc.		
Well	Fox 'A' No. 2-34		
Field	Altory		
County	Decatur	State	Kansas
Location	NW - SE - NW - NW 900' FNL & 900' FWL		
Sec: 34	Twp: 3 S	Rge: 27 W	Other Services CNL/CDL DIL/BHCS
Permanent Datum	Ground Level	Elevation	Elevation
Log Measured From	Kelly Bushing	2607	K.B. 2612
Drilling Measured From	Kelly Bushing	5 Ft. Above Perm. Datum	D.F. 2607

Date	6/30/2011	
Run Number	Two	
Depth Driller	3800	
Depth Logger	3801	
Bottom Logged Interval	3800	
Top Log Interval	3200	
Casing Driller	8.625 @ 219	
Casing Logger	219	
Bit Size	7.875	
Type Fluid in Hole	Chemical	
Salinity, ppm CL	3000	
Density / Viscosity	8.9	58
pH / Fluid Loss	11.5	6.4
Source of Sample	Flowline	
Rm @ Meas. Temp	2.40 @ 75	
Rmf @ Meas. Temp	1.80 @ 75	
Rmc @ Meas. Temp	3.24 @ 75	
Source of Rmf / Rmc	Charts	
Rm @ BHT	1.58 @ 114	
Operating Rig Time	5 Hours	
Max Rec. Temp. F	114	
Equipment Number	15	
Location	Hays	
Recorded By	B. Becker	
Witnessed By	Brad Rine	

<<< Fold Here >>>

All interpretations are opinions based on inferences from electrical or other measurements and we cannot and do not guarantee the accuracy or correctness of any interpretation, and we shall not, except in the case of gross or willful negligence on our part, be liable or responsible for any loss, costs, damages, or expenses incurred or sustained by anyone resulting from any interpretation made by any of our officers, agents or employees. These interpretations are also subject to our general terms and conditions set out in our current Price Schedule.

Comments

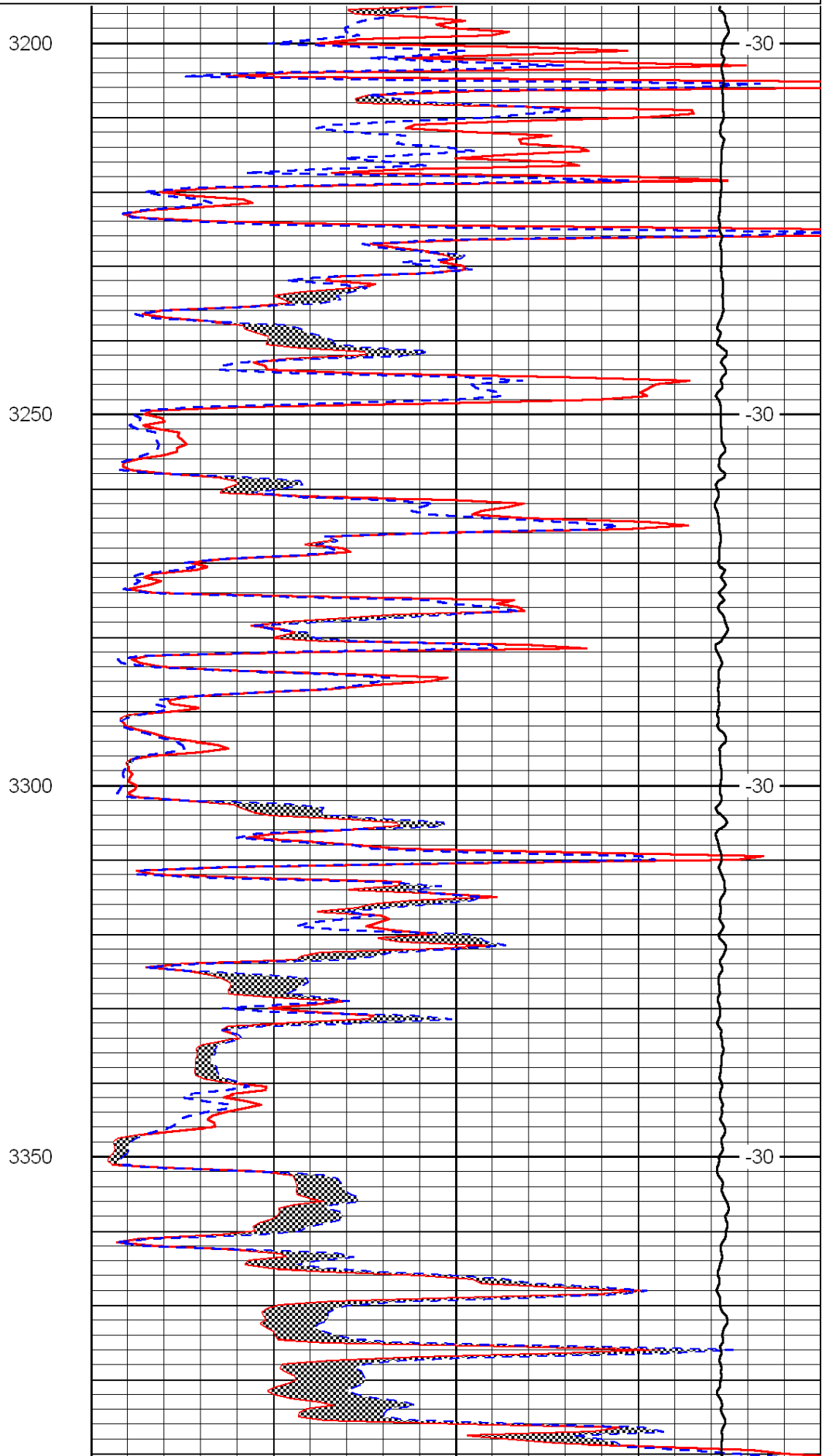
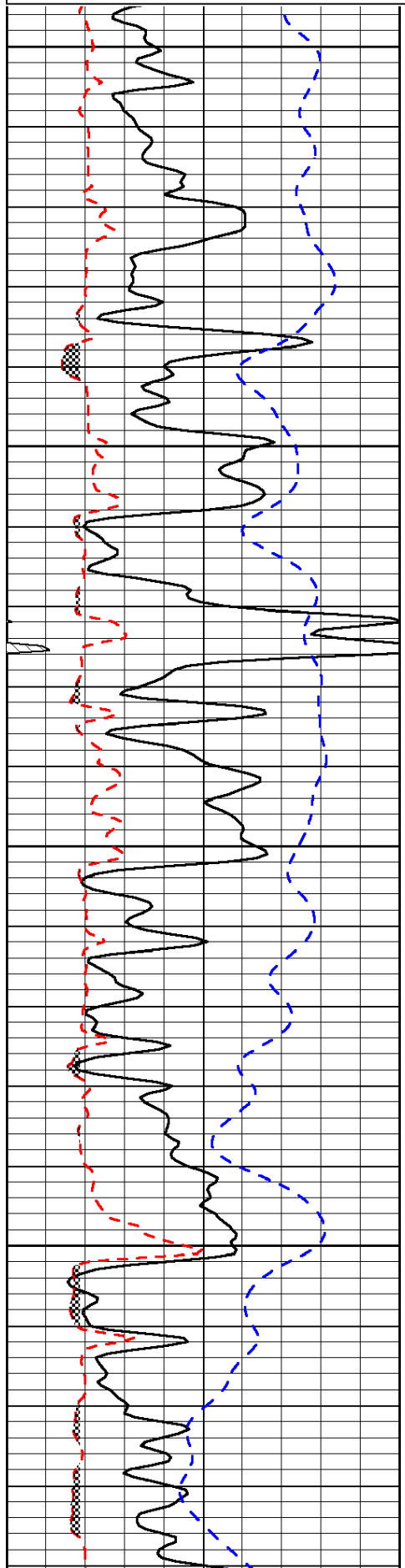
Thank you for using Log-Tech, Inc.
(785) 625-3858

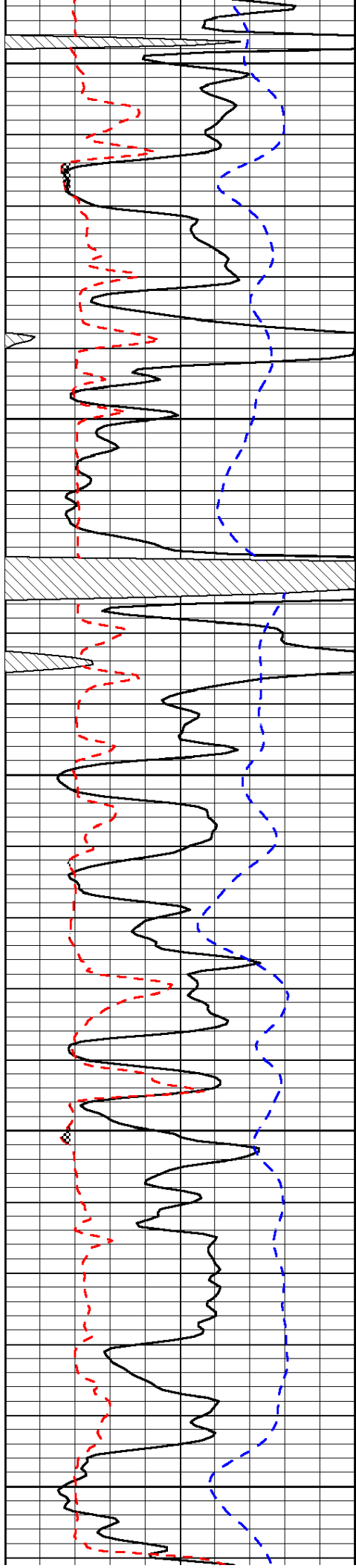
Dresden, Ks; 10-1/2 North; 4 East;
1/3 South; East Into

0	Gamma Ray	150
6	Micro Log Caliper (GAPI)	16
-200	SP (mV)	0

0	Micro Inverse 1 X 1	40
0	Micro Normal 2"	40
15000	Line Weight	0

LSPD





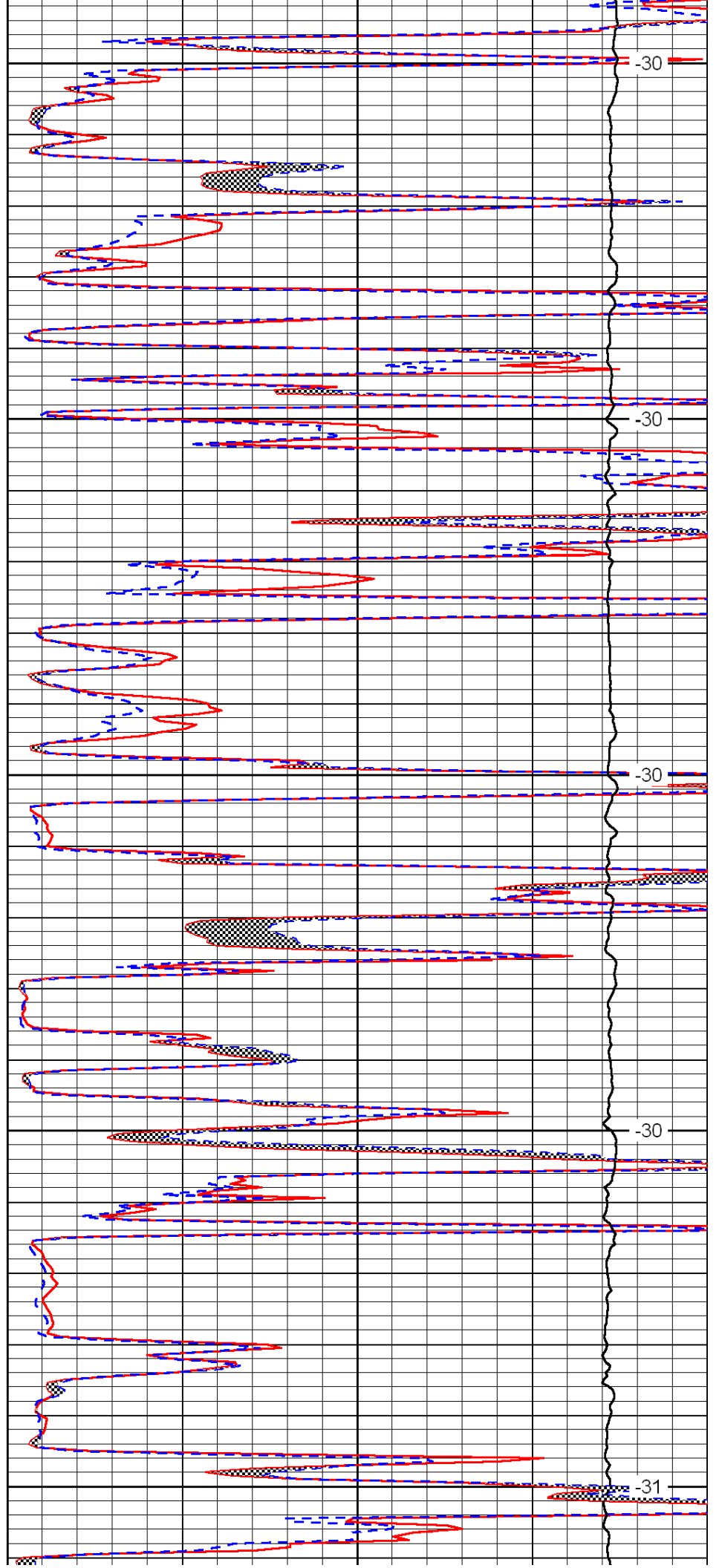
3400

3450

3500

3550

3600



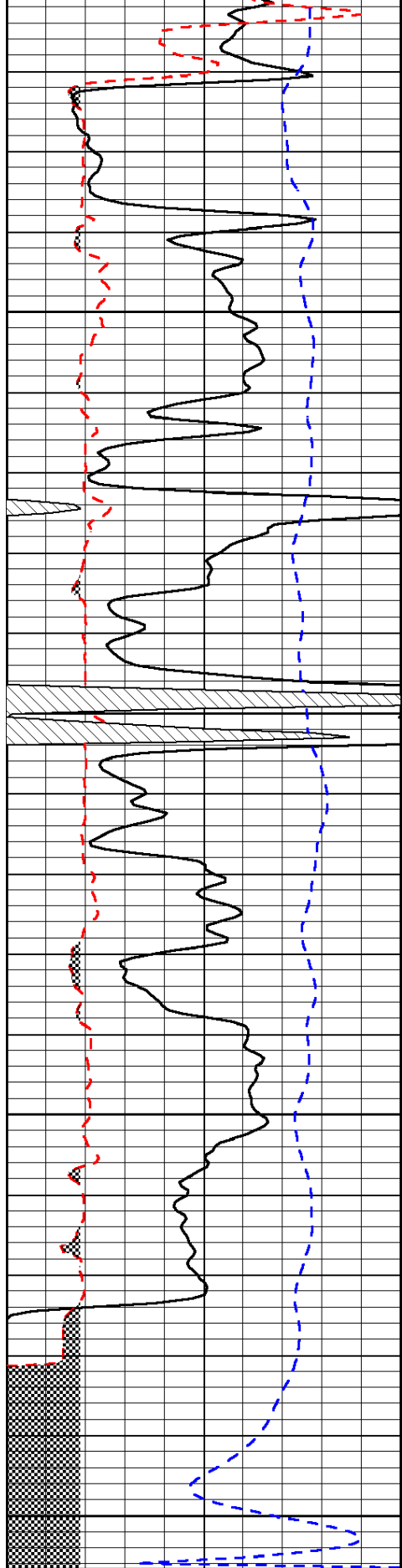
-30

-30

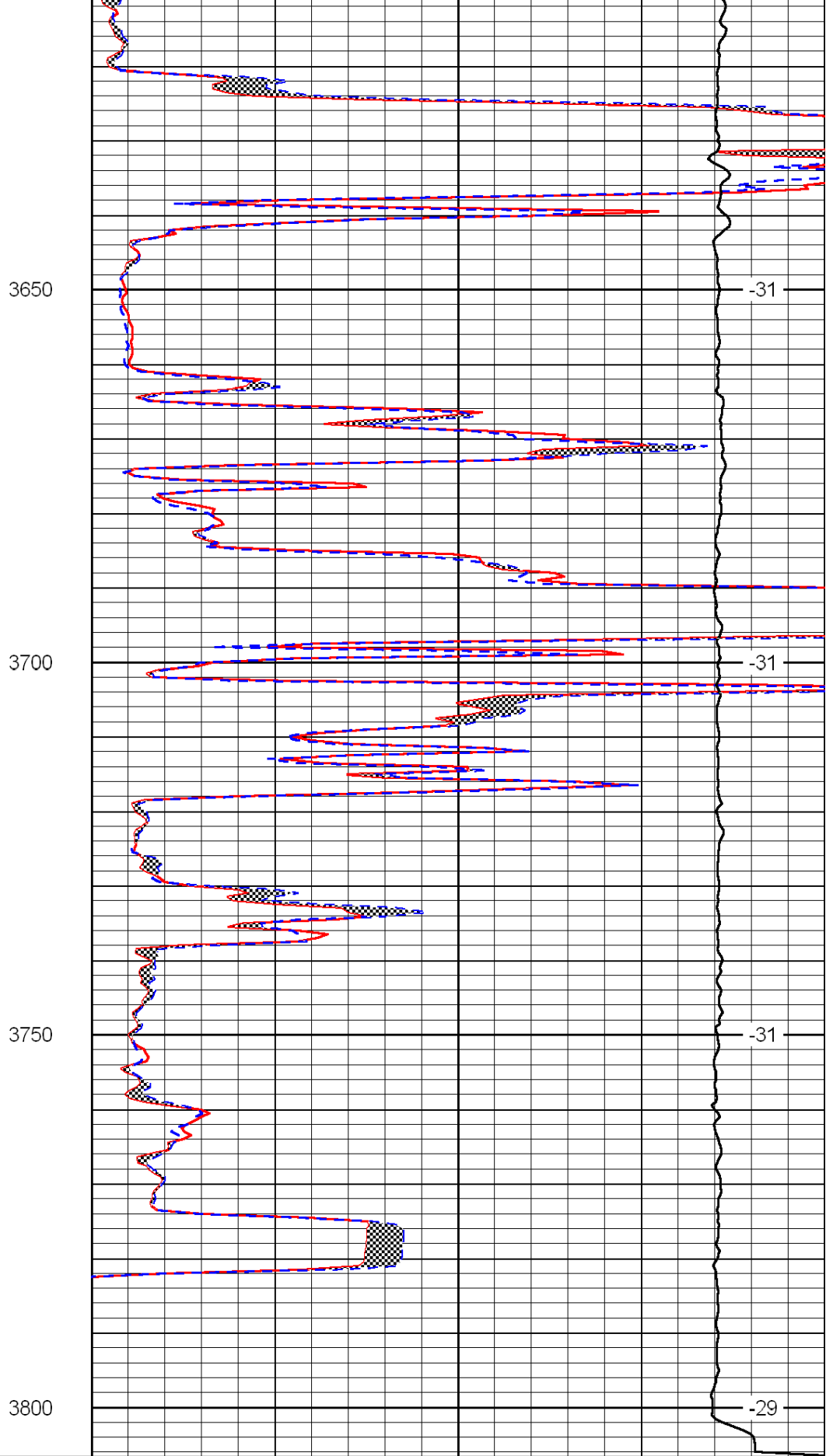
-30

-30

-31



0	Gamma Ray	150
6	Micro Log Caliper (GAPI)	16
-200	SP (mV)	0



0	Micro Inverse 1 X 1	40
0	Micro Normal 2''	40
15000	Line Weight	0

LSPD