



Dual Compensated Porosity Log

DIGITAL LOG (785) 625-3858

API No. 15-039-21,134-00-00

Company **Murfin Drilling Company, Inc.**
 Well **Fox 'A' No. 2-34**
 Field **Altory**
 County **Decatur** State **Kansas**

Location **NW - SE - NW - NW
900' FNL & 900' FWL**

Other Services
DIL
MEL/BHCS

Permanent Datum **Ground Level** Elevation **2607**
 Log Measured From **Kelly Bushing** 5 Ft. Above Perm. Datum
 Drilling Measured From **Kelly Bushing**

Sec: **34** Twp: **3 S** Rge: **27 W**

Elevation
K.B. 2612
D.F. 2607
G.L. 2607

Date **6/30/2011**

Run Number **One**

Type Log **CNL / CDL**

Depth Driller **3800**

Depth Logger **3801**

Bottom Logged Interval **3780**

Top Logged Interval **3200**

Type Fluid In Hole **Chemical**

Salinity, PPM CL **3000**

Density **8.9**

Level **Full**

Max. Rec. Temp. F **114**

Operating Rig Time **5 Hours**

Equipment -- Location **15 Hays**

Recorded By **B. Becker**

Witnessed By **Brad Rine**

Run No.	Bit	Borehole Record		Casing Record		To
		From	To	From	To	
1	12.25	00	219	8.625	24#	219
2	7.875	219	3800			

<<< Fold Here >>>

All interpretations are opinions based on inferences from electrical or other measurements and we cannot and do not guarantee the accuracy or correctness of any interpretation, and we shall not, except in the case of gross or willful negligence on our part, be liable or responsible for any loss, costs, damages, or expenses incurred or sustained by anyone resulting from any interpretation made by any of our officers, agents or employees. These interpretations are also subject to our general terms and conditions set out in our current Price Schedule.

Comments

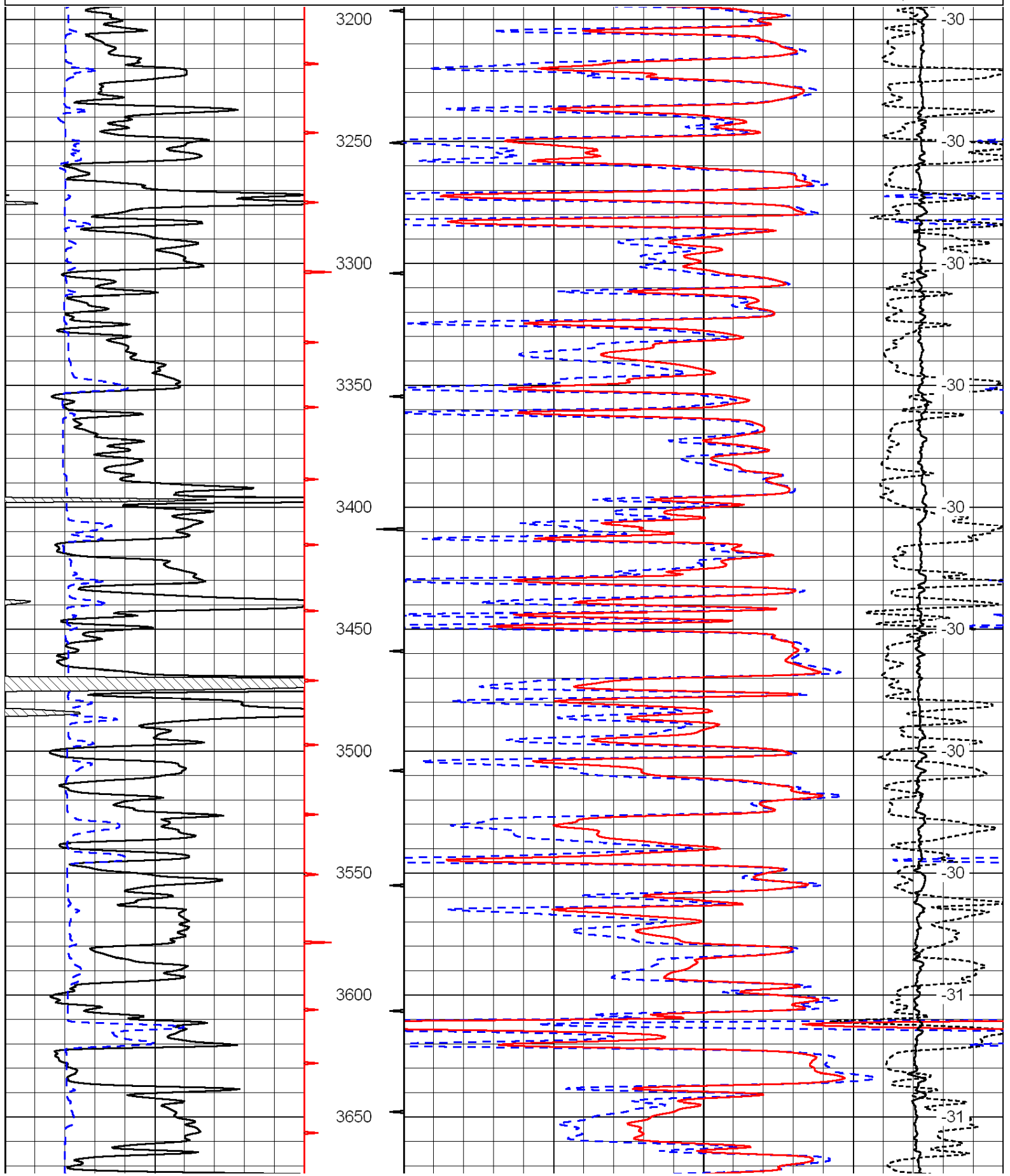
Thank you for using Log-Tech, Inc.
 (785) 625-3858

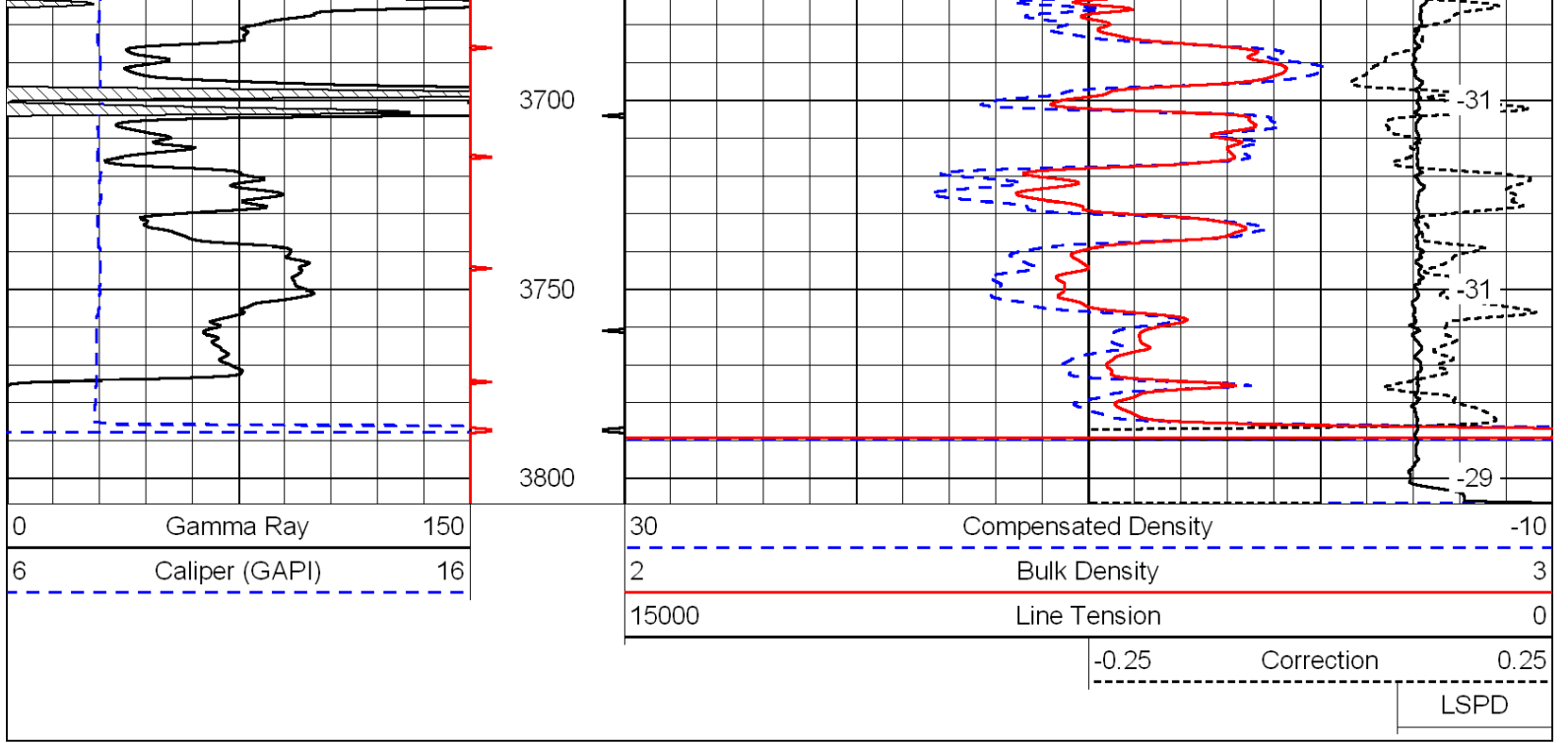
Dresden, Ks; 10-1/2 North; 4 East;
 1/3 South; East Into

Database File: c:\warrior\data\murfin_fox 'a' no. 2-34\murfinhd.db
 Dataset Pathname: DIL\murfstk
 Presentation Format: cdl
 Dataset Creation: Thu Jun 30 13:06:53 2011
 Charted by: Depth in Feet scaled 1:600

0	Gamma Ray	150
6	Caliper (GAPI)	16

30	Compensated Density	-10
2	Bulk Density	3
15000	Line Tension	0
-0.25	Correction	0.25
		LSPD





Database File: c:\warrior\data\murfin_fox 'a' no. 2-34\murfinhd.db
 Dataset Pathname: DIL/murfstk
 Presentation Format: cndlspec
 Dataset Creation: Thu Jun 30 13:06:53 2011
 Charted by: Depth in Feet scaled 1:240

