



Dual Compensated Porosity Log

DIGITAL LOG (785) 625-3858

API No. 15-159-22,653-00-00

Company **LD Drilling, Inc.**
 Well **Thomas No 1-28**
 Field **Chase Silica**
 County **Rice** State **Kansas**

Location **NW SE SE NW
2235' FNL & 2035' FWL**

Sec: **28** Twp: **19 S** Rge: **10 W**

Other Services
DIL/MEL

Permanent Datum **Ground Level** Elevation **1763**
 Log Measured From **Kelly Bushing** 5 Ft. Above Perm. Datum
 Drilling Measured From **Kelly Bushing**

K.B. 1768
 D.F. G.L. 1763

Date	6/24/2011	
Run Number	One	
Type Log	CNL / CDL	
Depth Driller	3400	
Depth Logger	3399	
Bottom Logged Interval	3378	
Top Logged Interval	2500	
Type Fluid In Hole	Chemical	
Salinity, PPM CL	8000	
Density	9.3	
Level	Full	
Max. Rec. Temp. F	110	
Operating Rig Time	3 1/2 Hours	
Equipment -- Location	10 Hays	
Recorded By	D.Kerr	
Witnessed By	Josh Austin	

Run No	Bit	Borehole Record		Size	Wgt. 23#	Casing Record	
		From	To			From	To
One	12.25	00	346	8.625		00	346
Two	7.875	346	TD				

<<< Fold Here >>>

All interpretations are opinions based on inferences from electrical or other measurements and we cannot and do not guarantee the accuracy or correctness of any interpretation, and we shall not, except in the case of gross or willful negligence on our part, be liable or responsible for any loss, costs, damages, or expenses incurred or sustained by anyone resulting from any interpretation made by any of our officers, agents or employees. These interpretations are also subject to our general terms and conditions set out in our current Price Schedule.

Comments

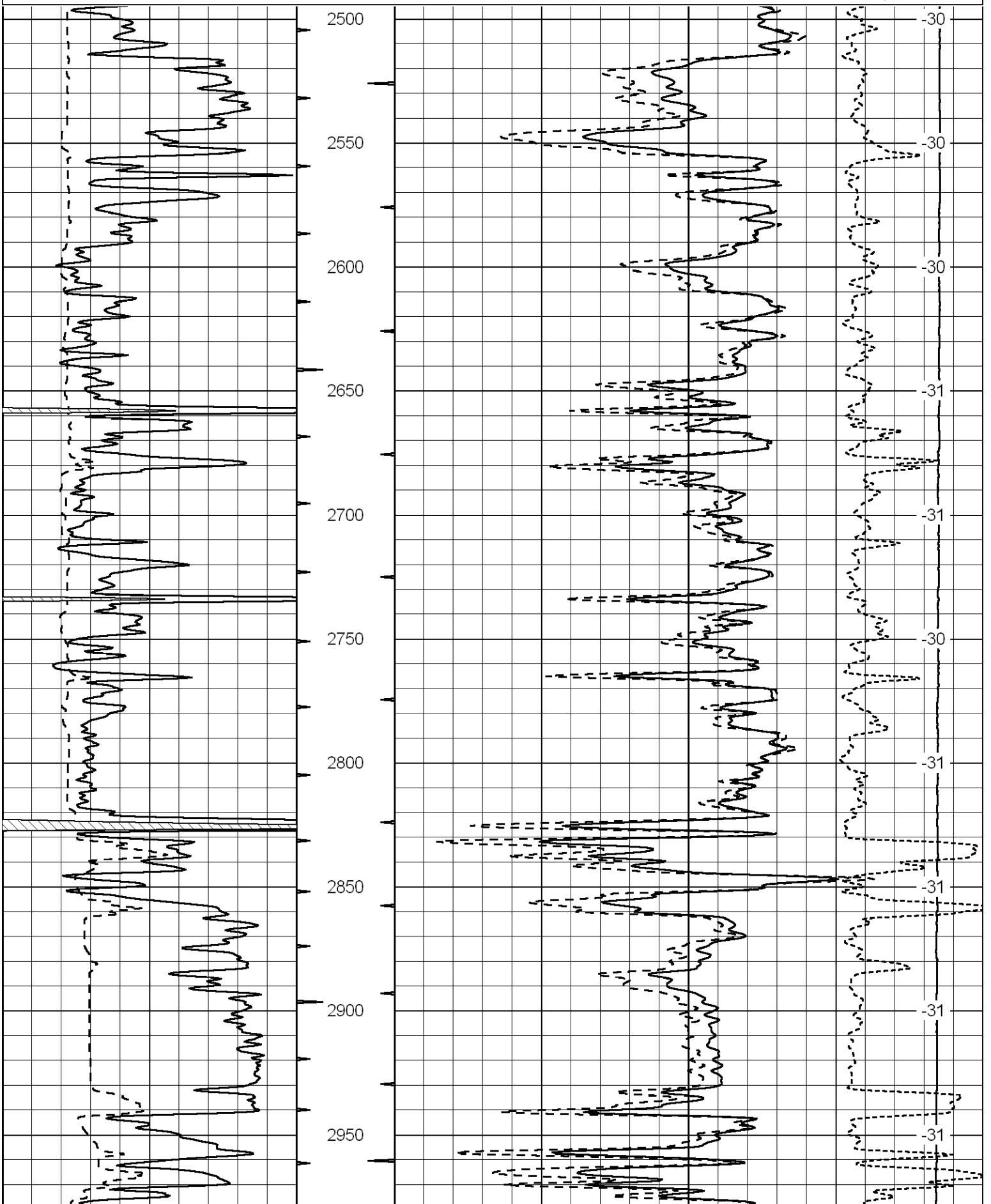
Thank you for using Log-Tech, Inc.
 (785) 625-3858

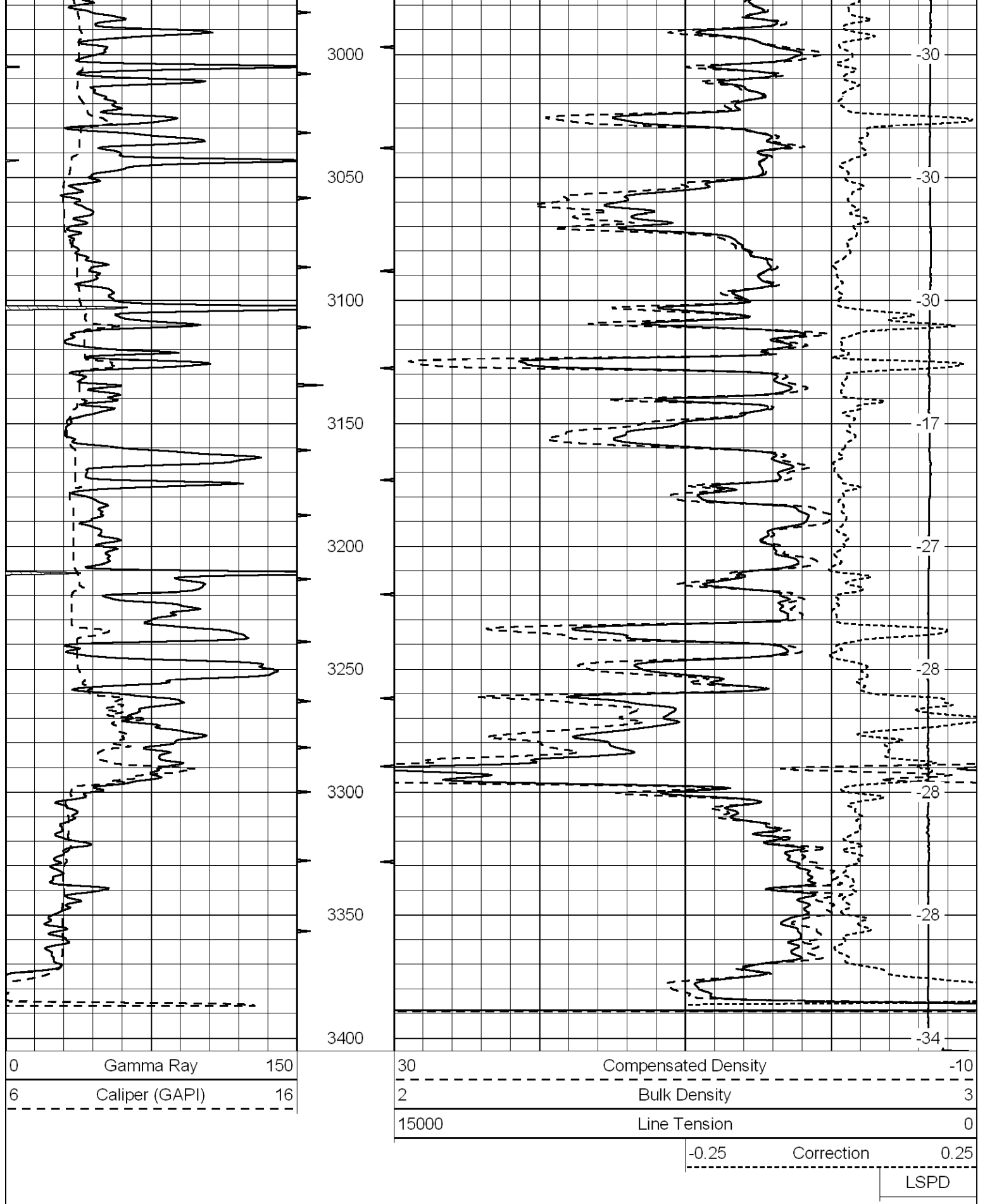
Ellinwood KS, East to the Rice County Line,
 2 East to 3 RD, 2 North, 1/2 East, South Into

Database File: ldrilling_thomas_1_28hd.db
 Dataset Pathname: dil/ldstk
 Presentation Format: cdl
 Dataset Creation: Fri Jun 24 16:30:01 2011
 Charted by: Depth in Feet scaled 1:600

0	Gamma Ray	150
6	Caliper (GAPI)	16

30	Compensated Density	-10
2	Bulk Density	3
15000	Line Tension	0
-0.25	Correction	0.25
		LSPD

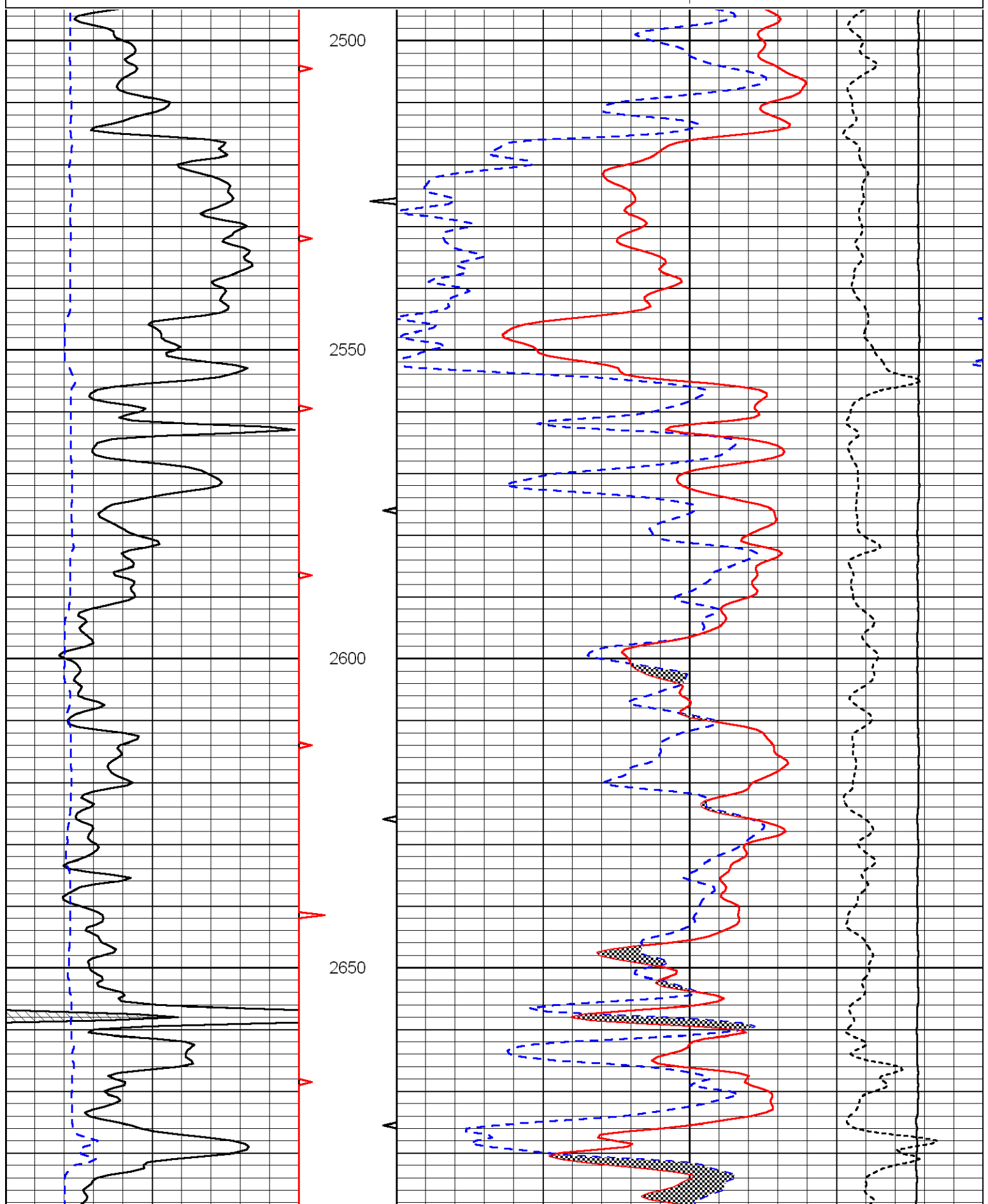


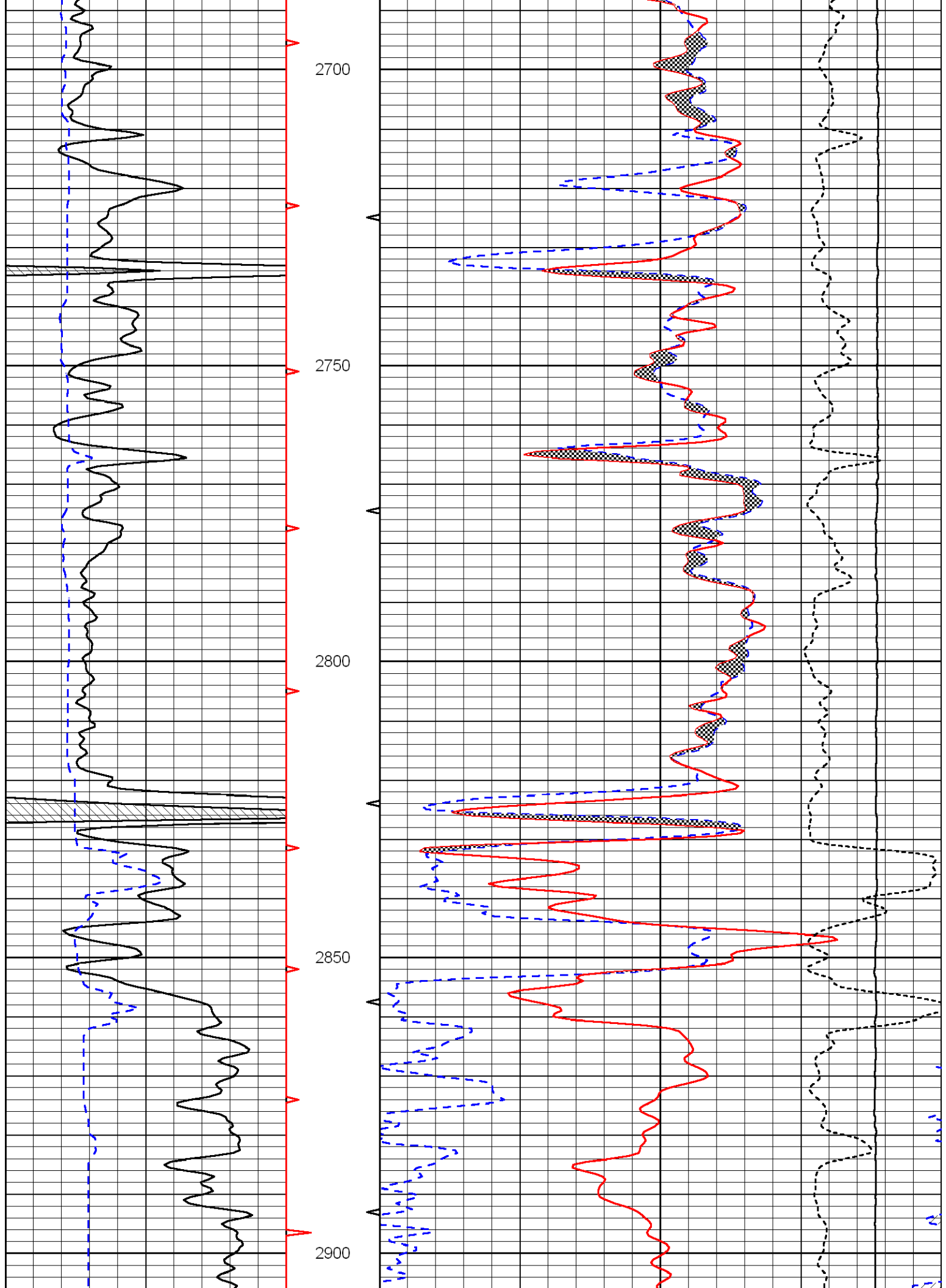


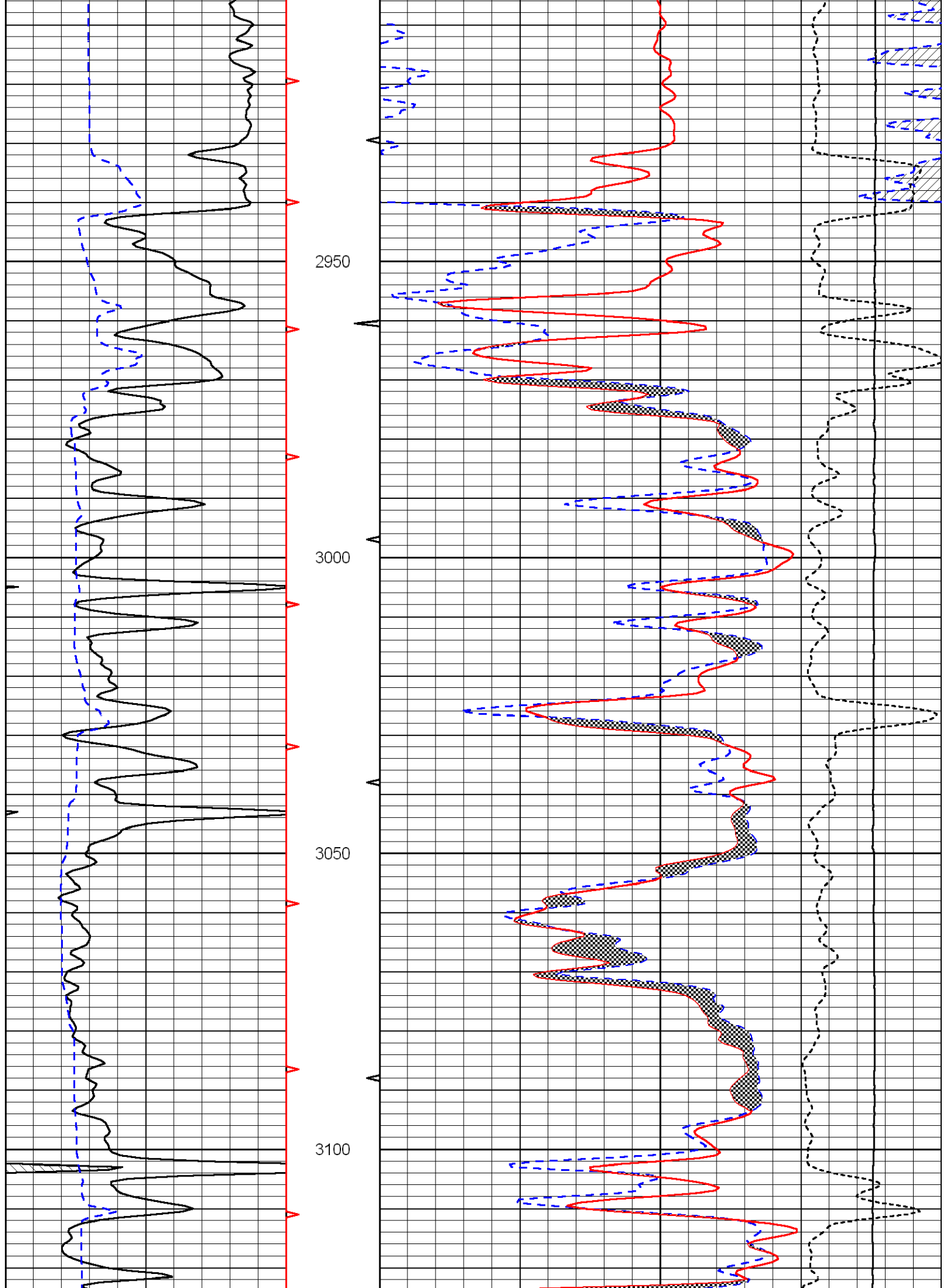
Database File: ldrilling_thomas_1_28hd.db
 Dataset Pathname: dil/ldstk
 Presentation Format: cndlspec
 Dataset Creation: Fri Jun 24 16:30:01 2011
 Charted by: Depth in Feet scaled 1:240

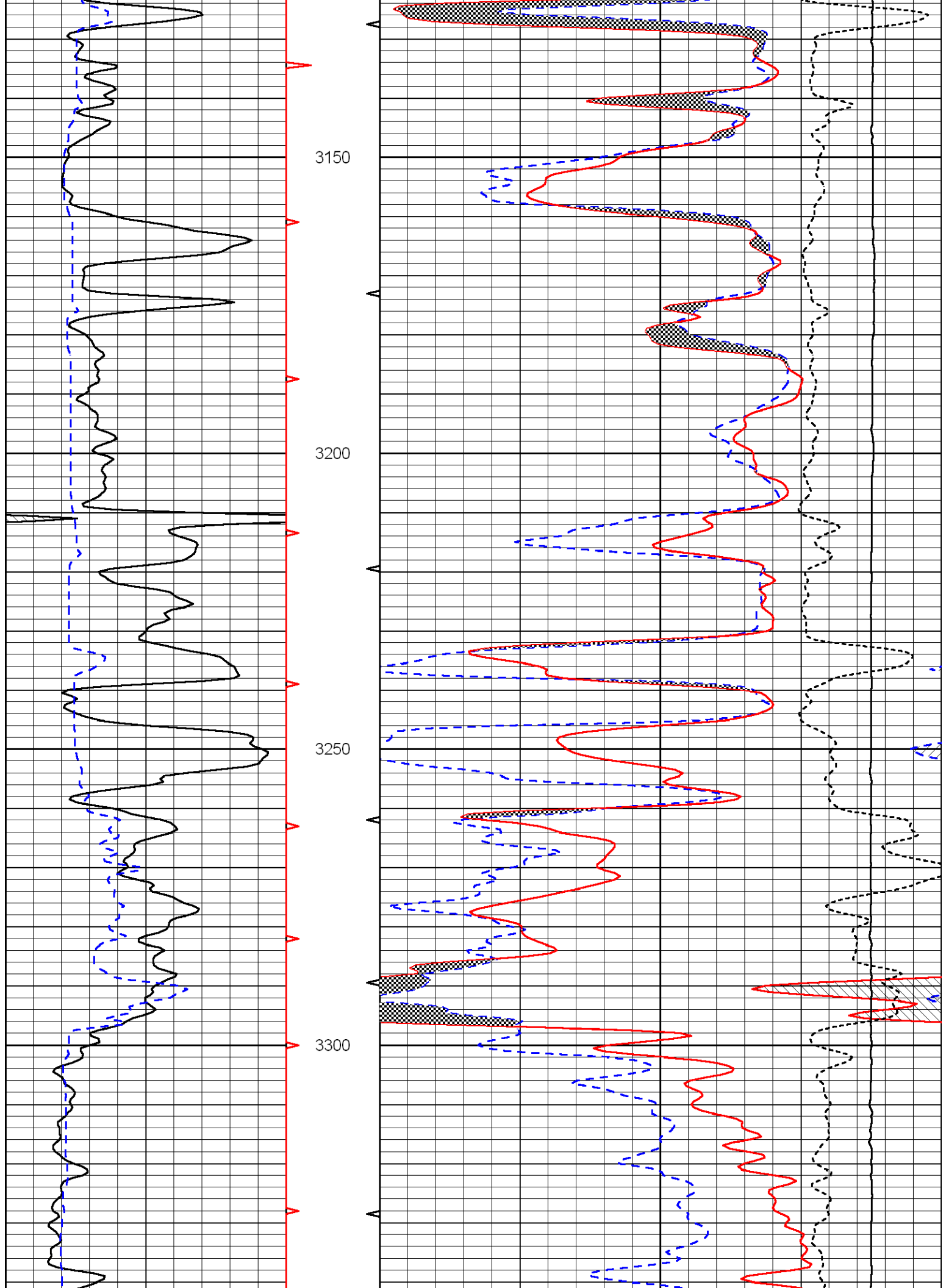
0	Gamma Ray	150
6	Caliper (GAPI)	16

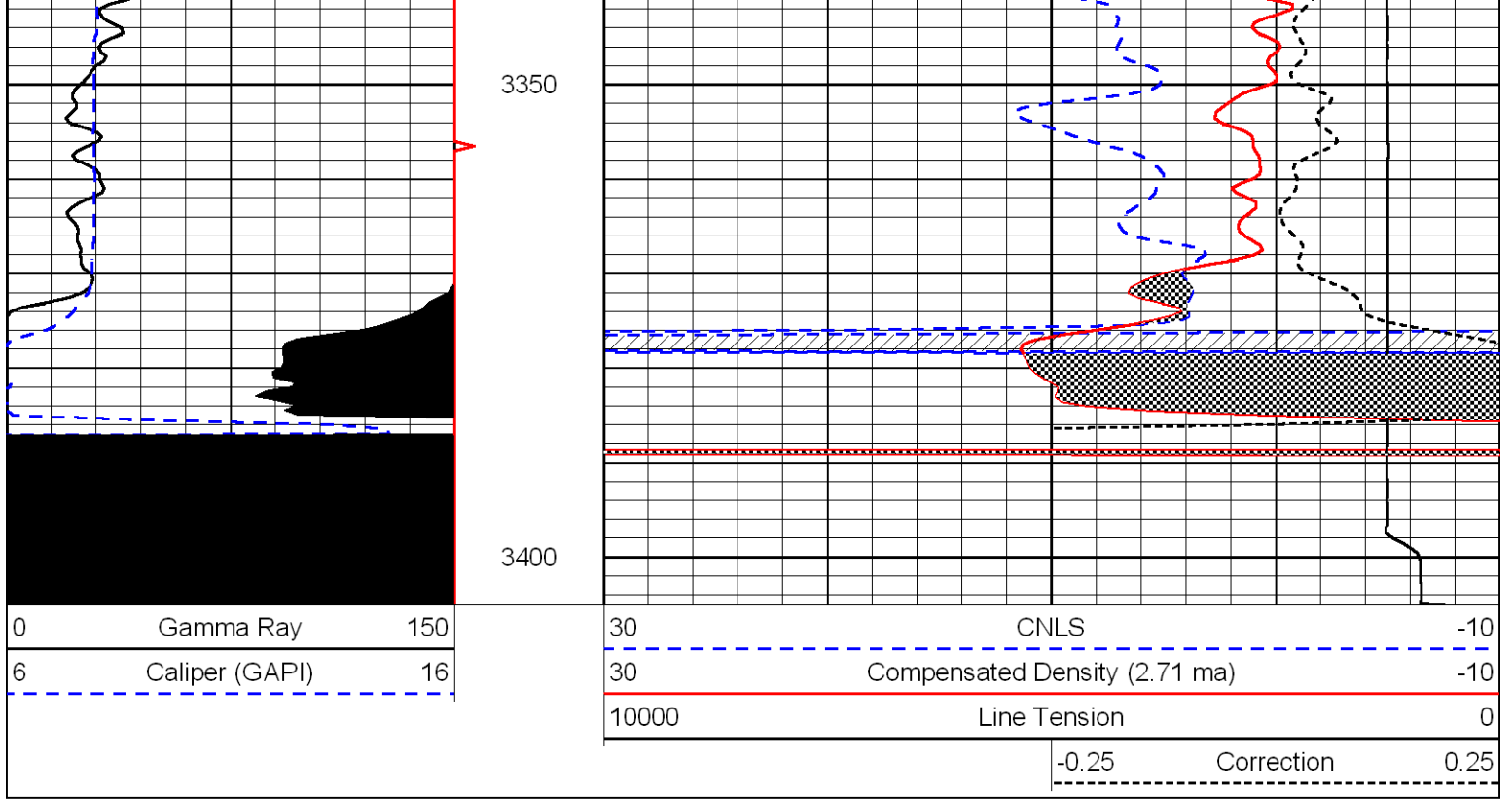
30	CNLS	-10	
30	Compensated Density (2.71 ma)	-10	
10000	Line Tension	0	
	-0.25	Correction	0.25





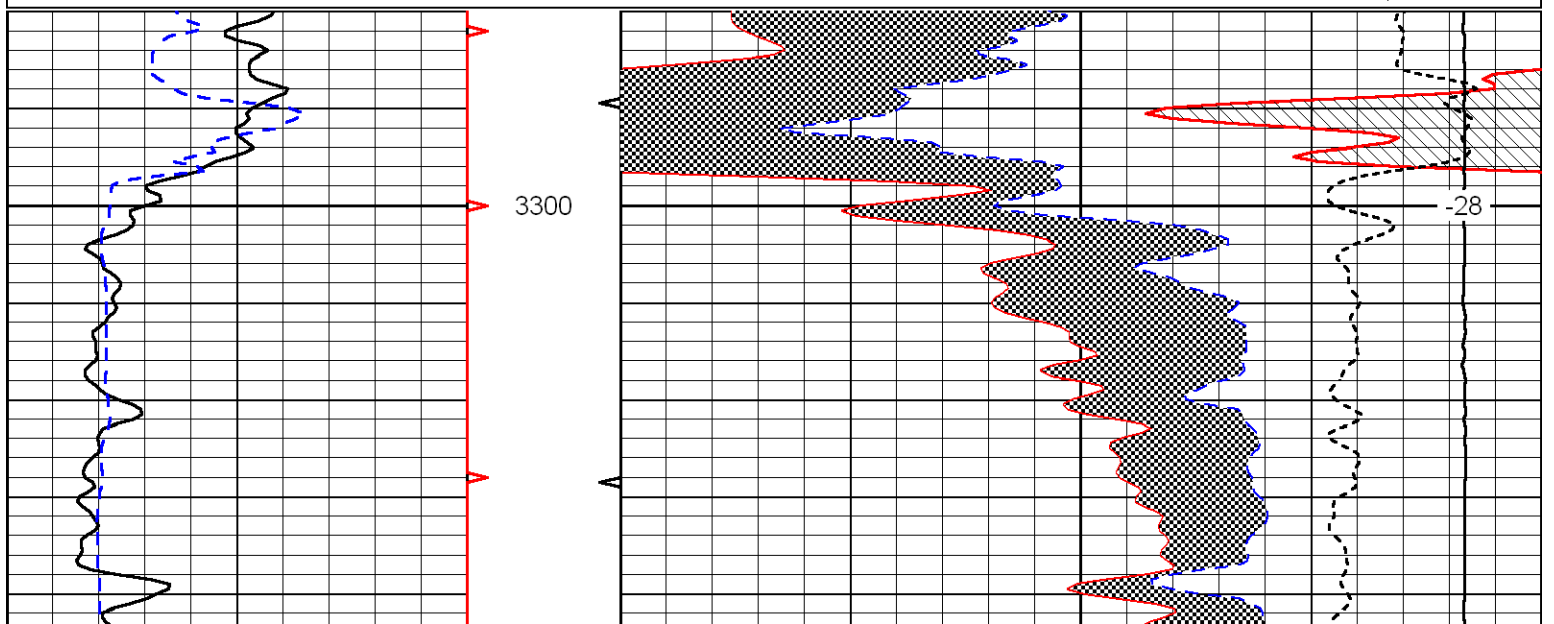
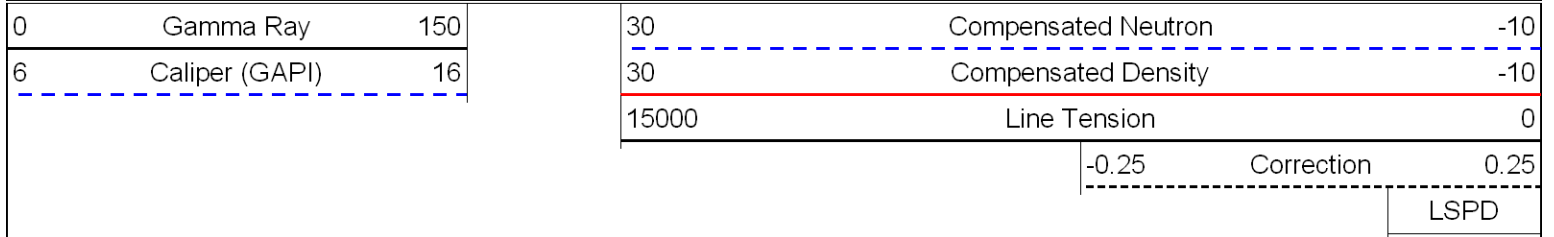


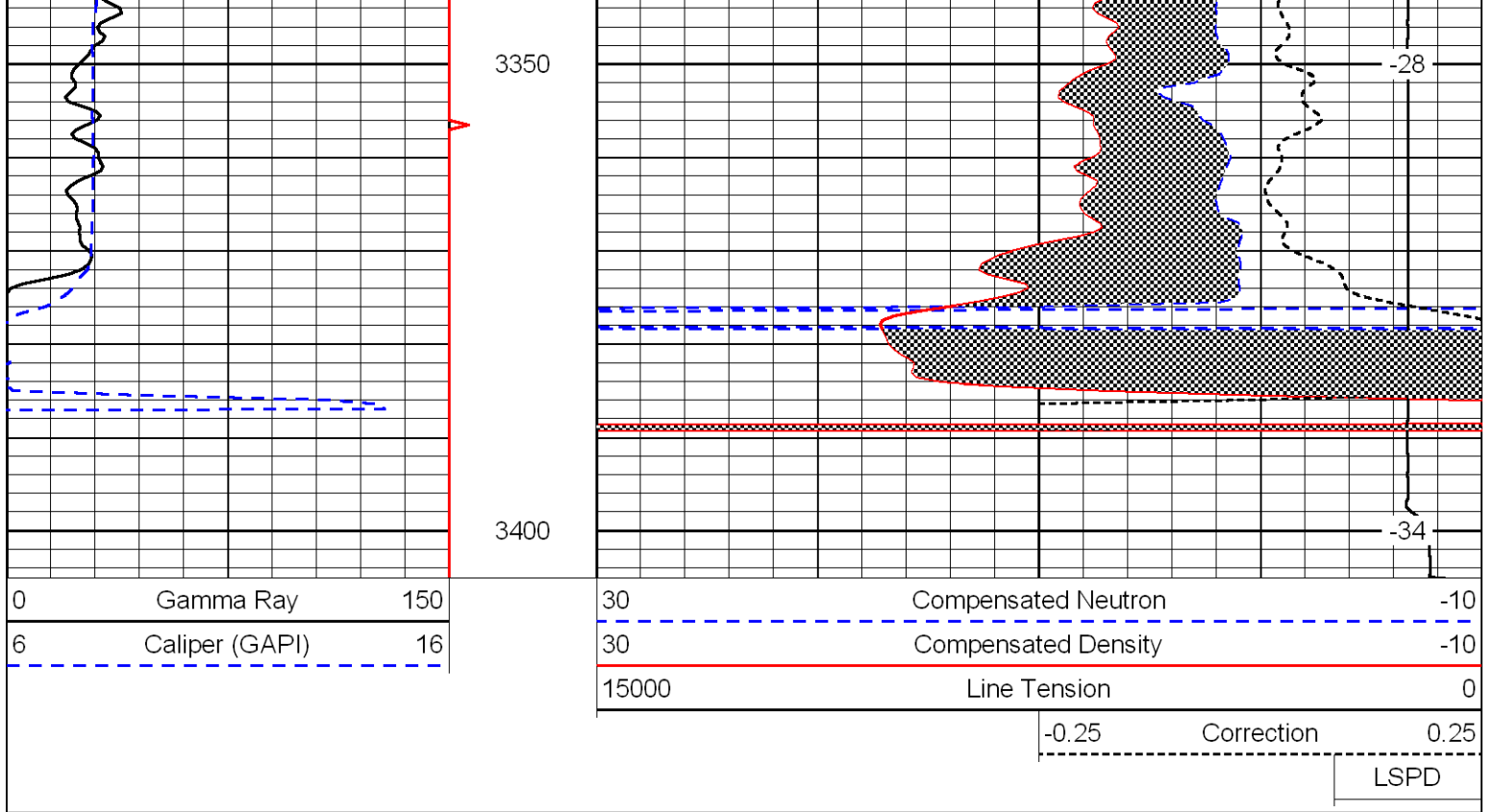




Dolomite Matrix (2.83)

Database File: ldrilling_thomas_1_28hd.db
 Dataset Pathname: dil/dol283
 Presentation Format: cndldolo
 Dataset Creation: Fri Jun 24 17:05:55 2011
 Charted by: Depth in Feet scaled 1:240





Dolomite Matrix (2.87)

Database File: ldrilling_thomas_1_28hd.db
 Dataset Pathname: dil/dol287
 Presentation Format: cndldolo
 Dataset Creation: Fri Jun 24 17:05:56 2011
 Charted by: Depth in Feet scaled 1:240

