



Dual Induction Log

DIGITAL LOG (785) 625-3858

API No.	15-159-22,653-00-00	
Company	LD Drilling, Inc.	
Well	Thomas No 1-28	
Field	Chase Silica	
County	Rice	State
Location	NW SE SE NW 2235' FNL & 2035' FWL	
	Sec: 28	Twp: 19 S Rge: 10 W
Other Services	CNL/CDL MEL	

Permanent Datum	Ground Level	Elevation	1763
Log Measured From	Kelly Bushing	5	Ft. Above Perm. Datum
Drilling Measured From	Kelly Bushing		
Date	6/24/2011		
Run Number	One		
Depth Driller	3400		
Depth Logger	3399		
Bottom Logged Interval	3398		
Top Log Interval	300		
Casing Driller	8.625 @ 346		
Casing Logger	346		
Bit Size	7.875		
Type Fluid in Hole	Chemical		
Salinity, ppm CL	8000		
Density / Viscosity	9.3	64	
pH / Fluid Loss	8.0	10.2	
Source of Sample	Flowline		
Rm @ Meas. Temp	.35	@	90
Rmf @ Meas. Temp	.26	@	90
Rmc @ Meas. Temp	.47	@	90
Source of Rmf / Rmc	Charts		
Rm @ BHT	.29	@	110
Operating Rig Time	3 1/2 Hours		
Max Rec. Temp. F	110		
Equipment Number	10		
Location	Hays		
Recorded By	D.Kerr		
Witnessed By	Josh Austin		

<<< Fold Here >>>

All interpretations are opinions based on inferences from electrical or other measurements and we cannot and do not guarantee the accuracy or correctness of any interpretation, and we shall not, except in the case of gross or willful negligence on our part, be liable or responsible for any loss, costs, damages, or expenses incurred or sustained by anyone resulting from any interpretation made by any of our officers, agents or employees. These interpretations are also subject to our general terms and conditions set out in our current Price Schedule.

Comments

Thank you for using Log-Tech, Inc.
 (785) 625-3858

Ellinwood KS, East to the Rice County Line,
 2 East to 3 RD, 2 North, 1/2 East, South Into

Database File: ldrilling_thomas_1_28hd.db
 Dataset Pathname: dil/lidstk
 Presentation Format: dil2in
 Dataset Creation: Fri Jun 24 16:30:01 2011
 Charted by: Depth in Feet scaled 1:600

0	Gamma Ray	150
-200	SP	0

0	Shallow Resistivity	50
0	Deep Resistivity	50

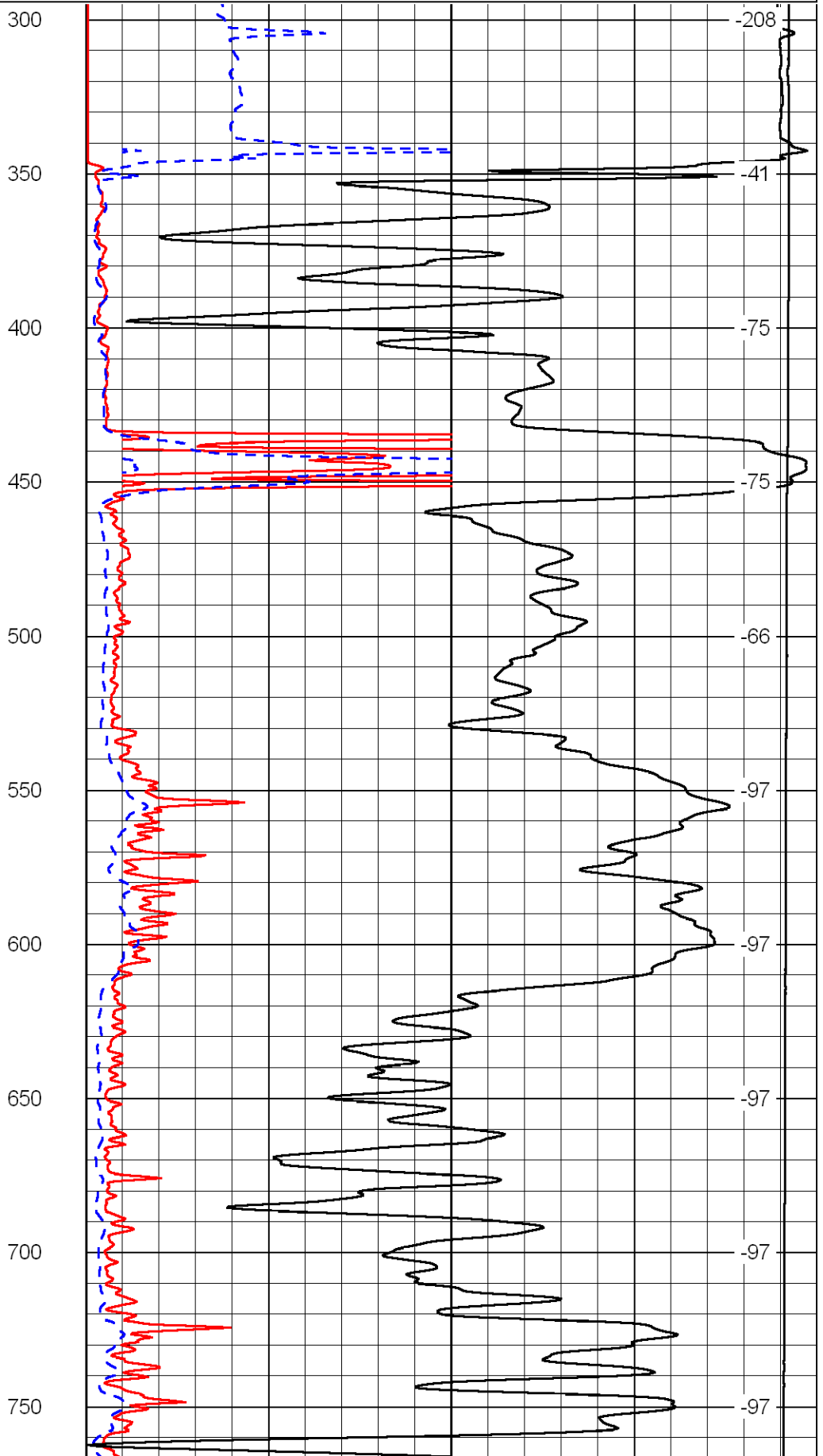
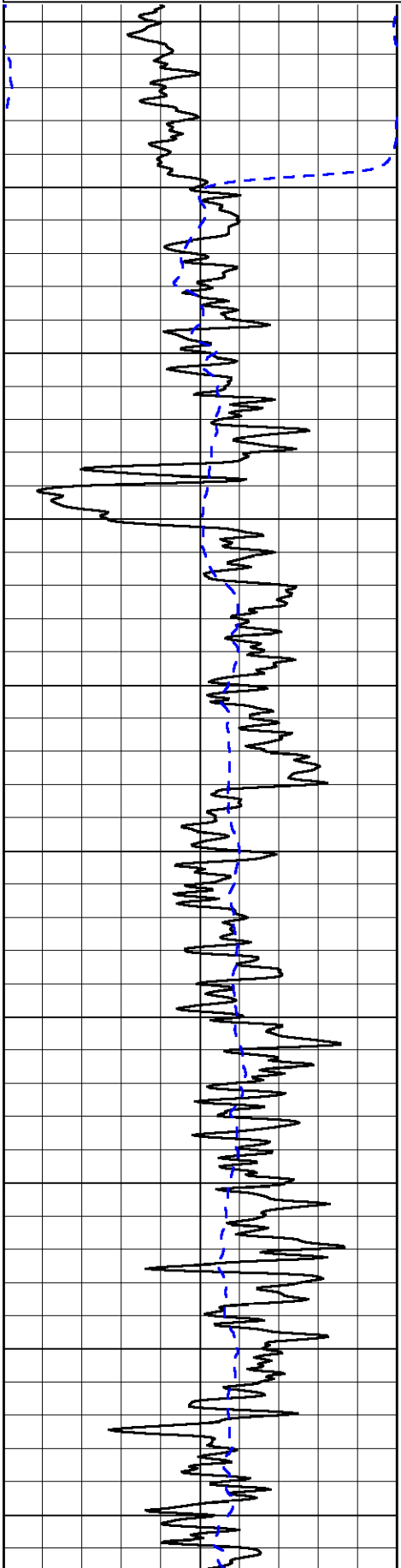
LSPD	0
------	---

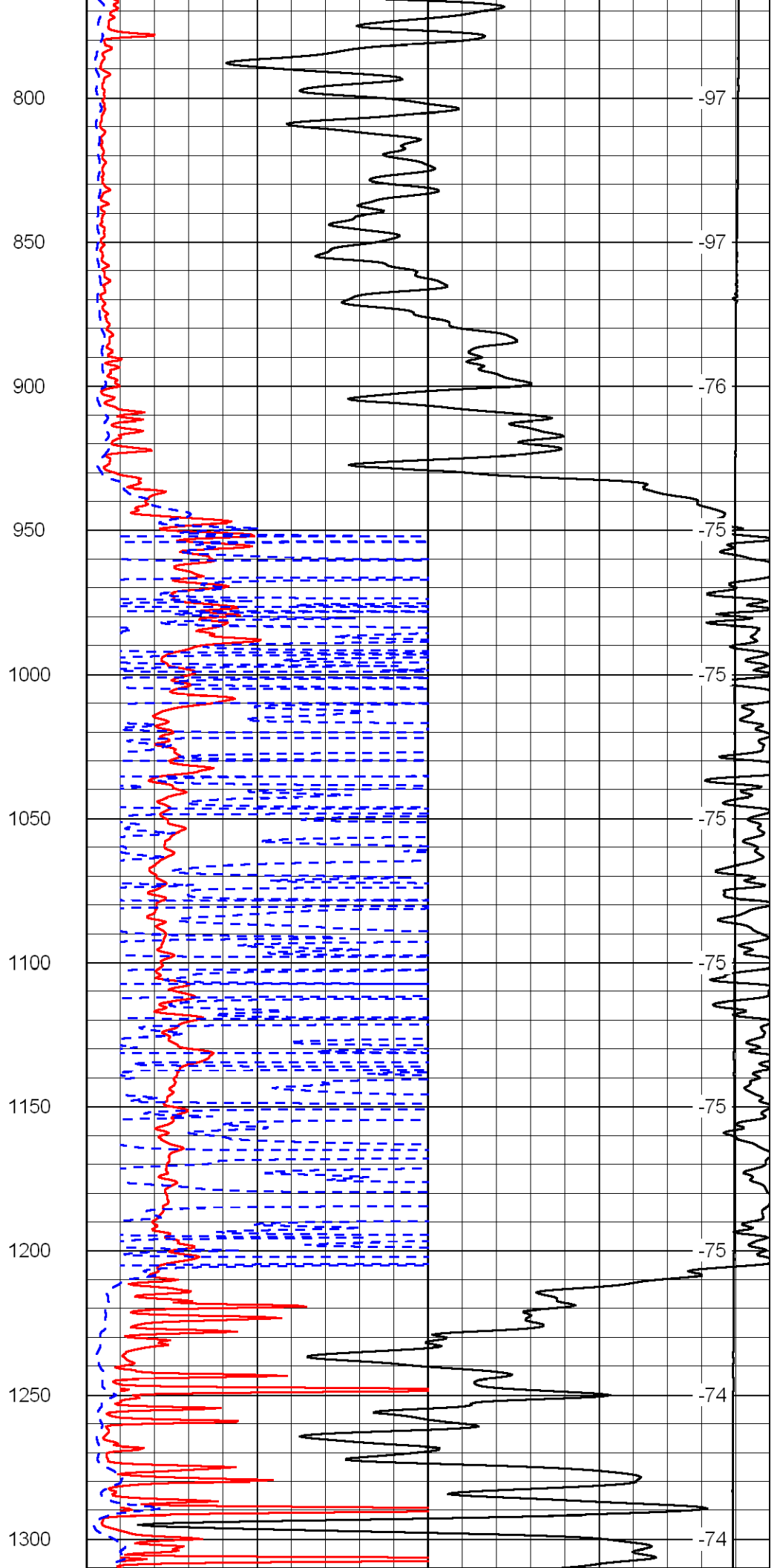
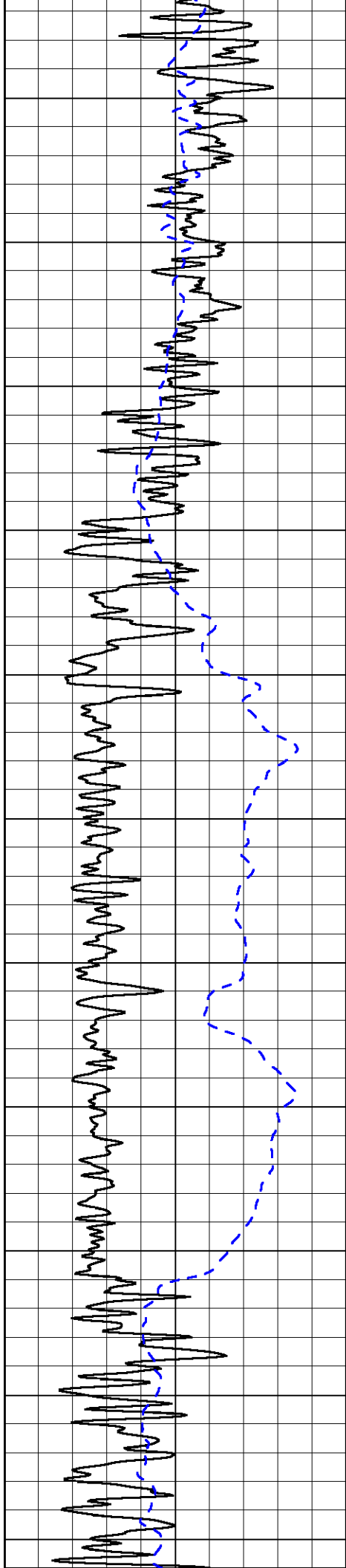
1000	Conductivity	0
------	--------------	---

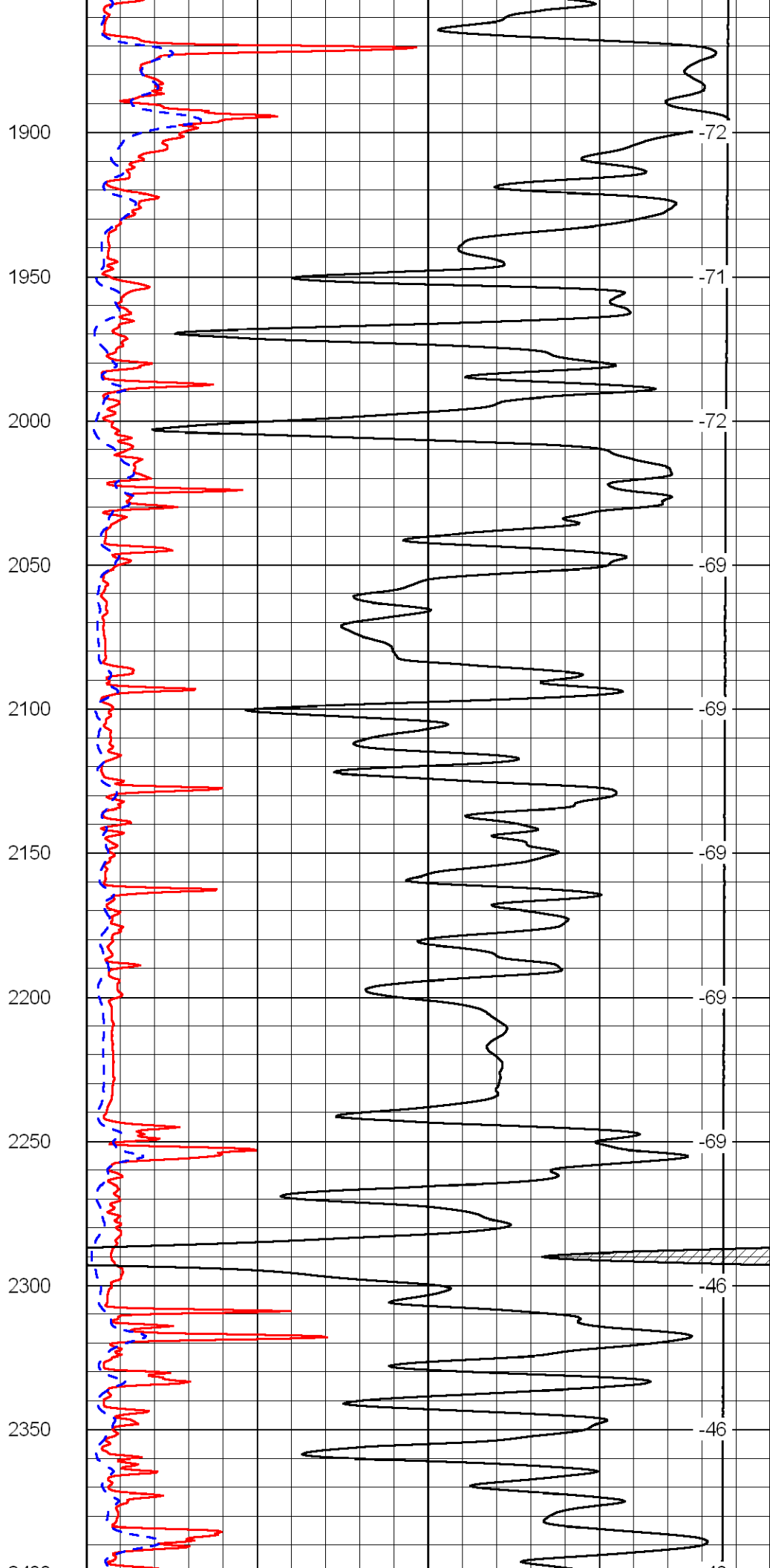
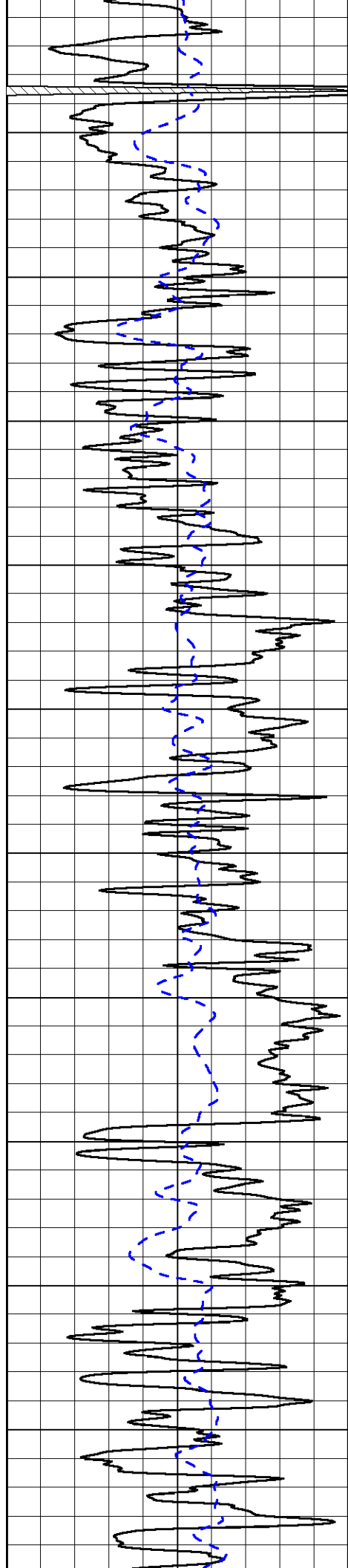
15000	Line Tension	0
-------	--------------	---

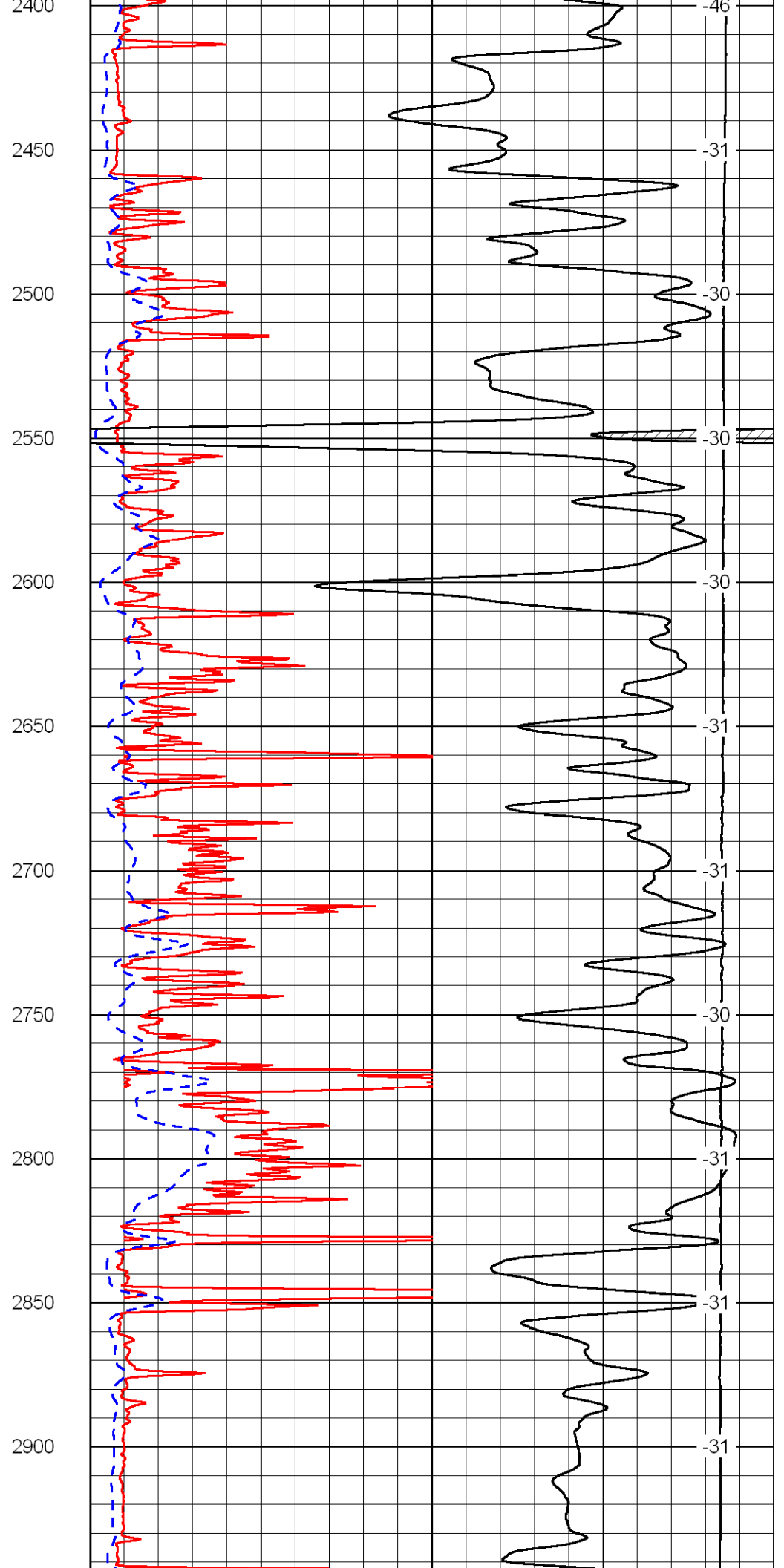
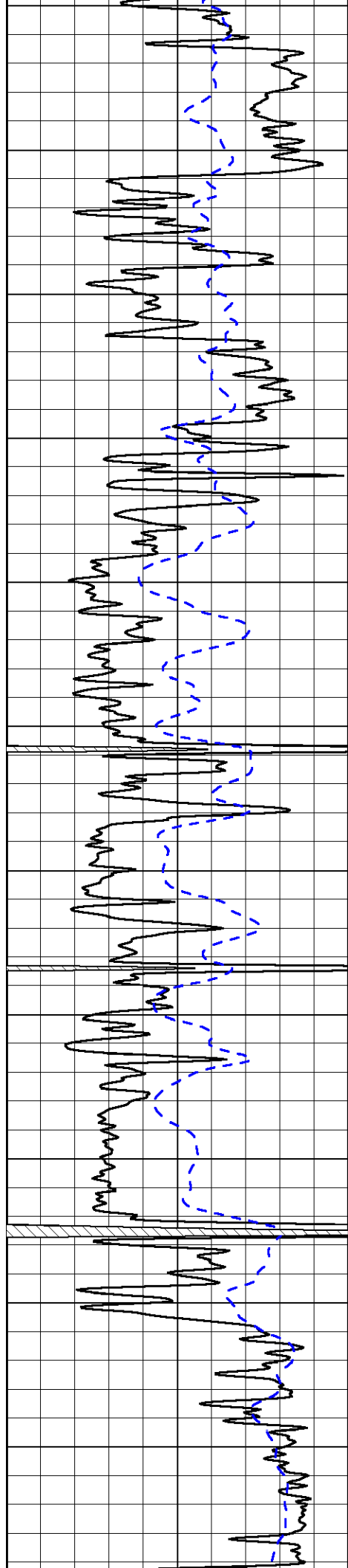
50	Shallow Resistivity	500
----	---------------------	-----

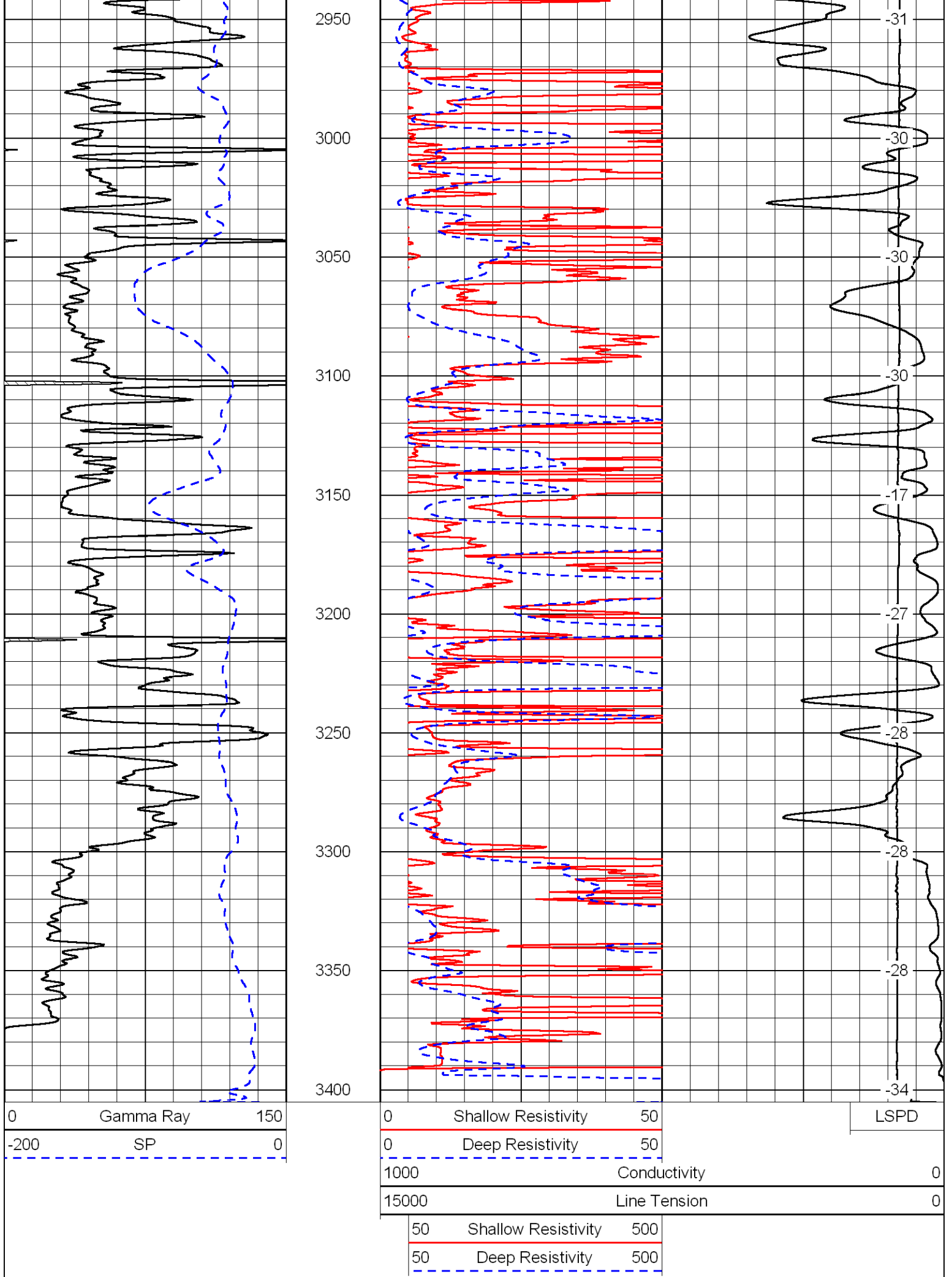
50	Deep Resistivity	500
----	------------------	-----









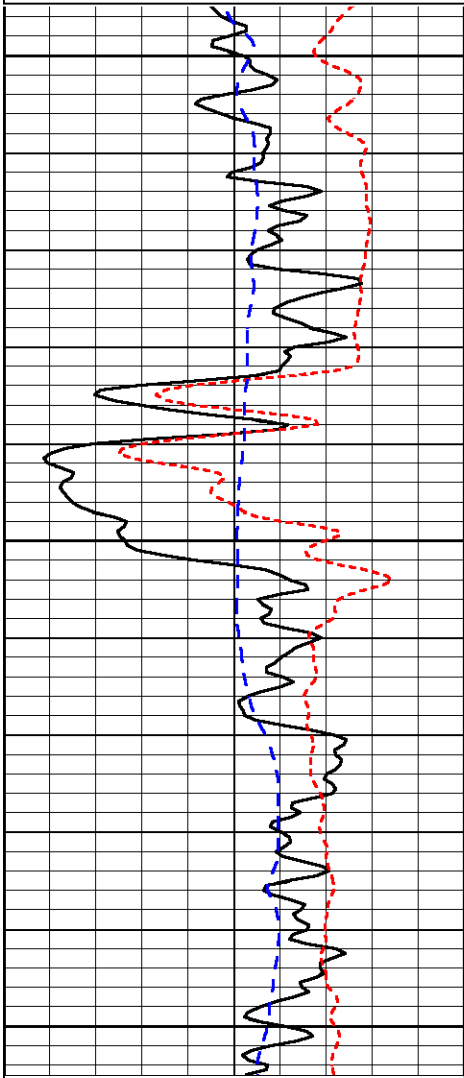


Database File: Idrilling_thomas_1_28hd.db
 Dataset Pathname: dil/ldstk
 Presentation Format: dil
 Dataset Creation: Fri Jun 24 16:30:01 2011
 Charted by: Depth in Feet scaled 1:240

0	Gamma Ray	150
-160	RXO/RT	40
-200	SP	0

0.2	Deep Resistivity	2000
0.2	Medium Resistivity	2000
0.2	Shallow Resistivity	2000
10000	Line Tension	0

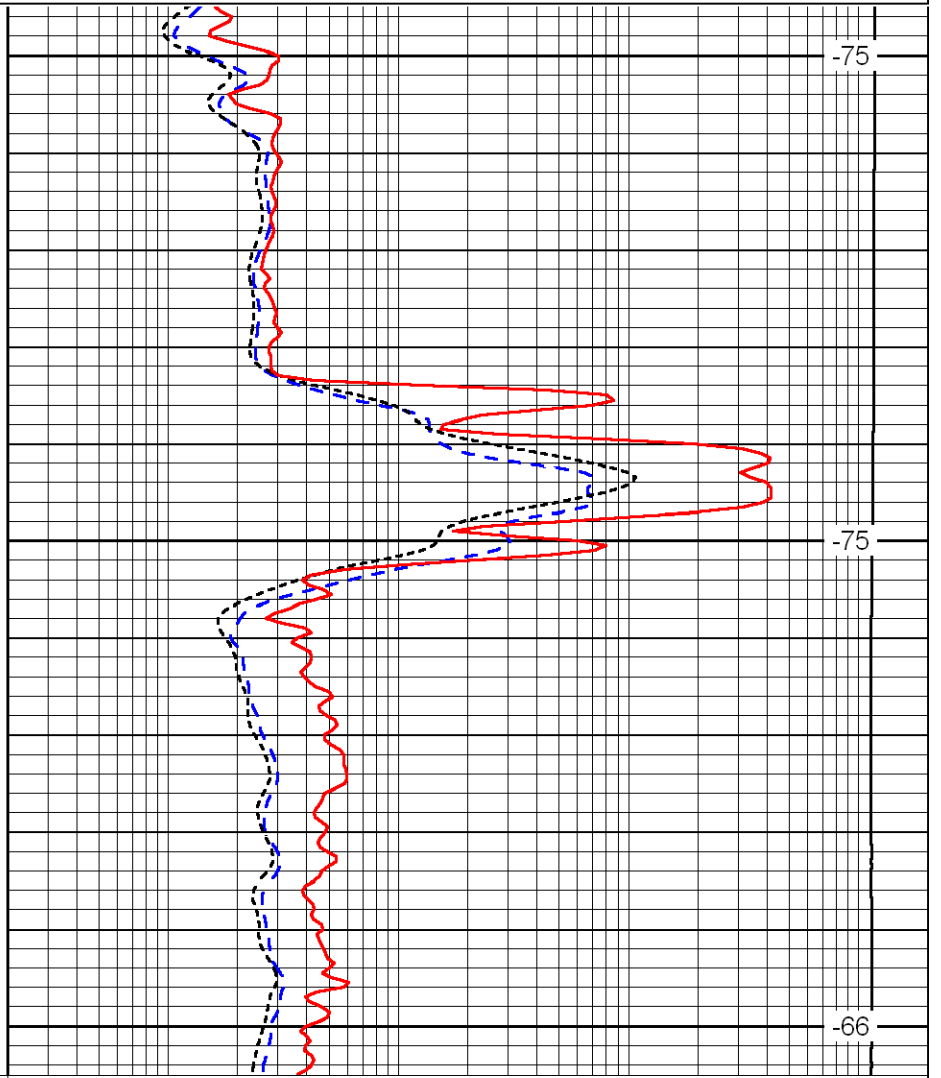
LSPD



400

450

500



-75

-75

-66

0	Gamma Ray	150
-160	RXO/RT	40
-200	SP	0

0.2	Deep Resistivity	2000
0.2	Medium Resistivity	2000
0.2	Shallow Resistivity	2000
10000	Line Tension	0

LSPD

Database File: Idrilling_thomas_1_28hd.db
 Dataset Pathname: dil/ldstk
 Presentation Format: dil
 Dataset Creation: Fri Jun 24 16:30:01 2011
 Charted by: Depth in Feet scaled 1:240

0	Gamma Ray	150
-160	RXO/RT	40

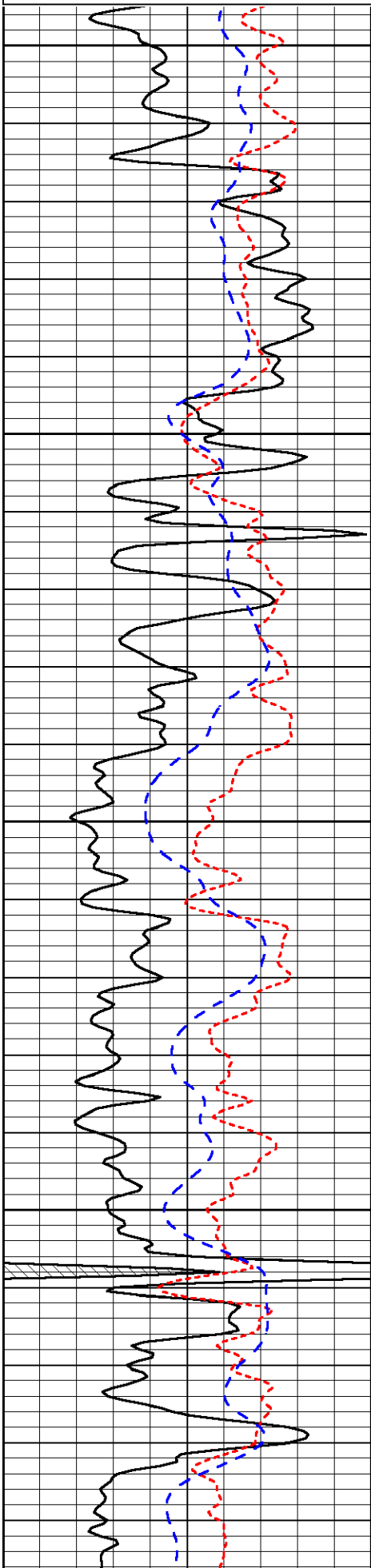
0.2	Deep Resistivity	2000
0.2	Medium Resistivity	2000

-200 SP 0

0.2 Shallow Resistivity 2000

10000 Line Tension 0

LSPD

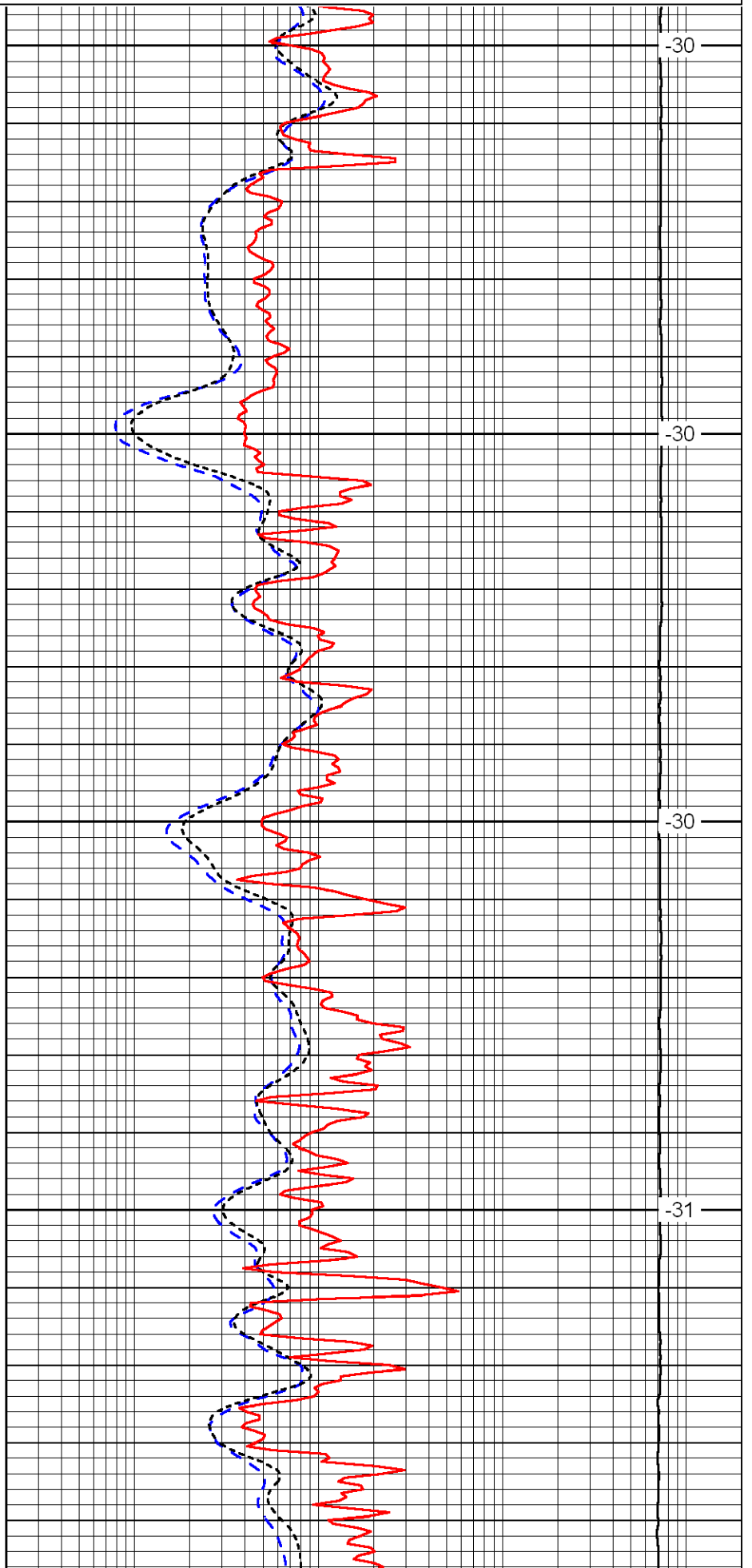


2500

2550

2600

2650

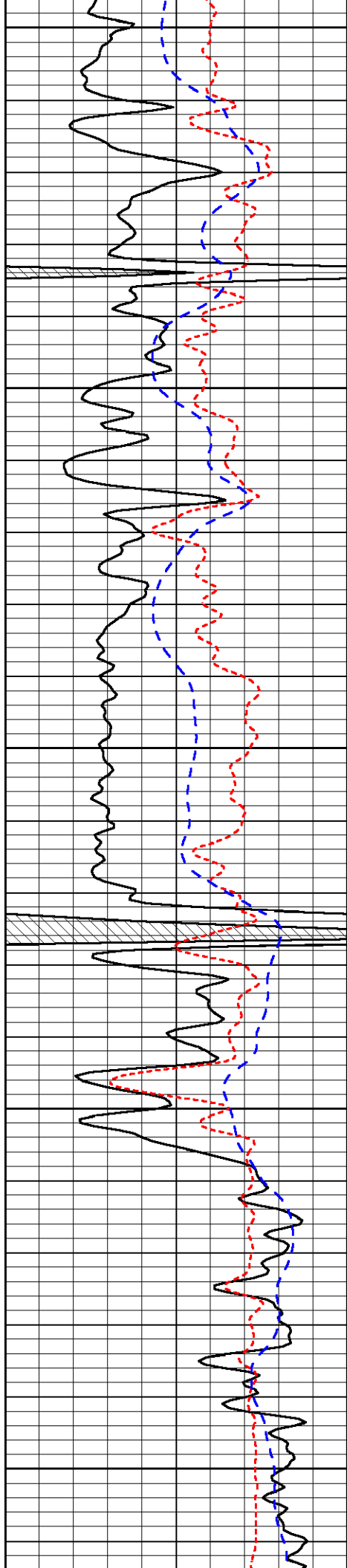


-30

-30

-30

-31



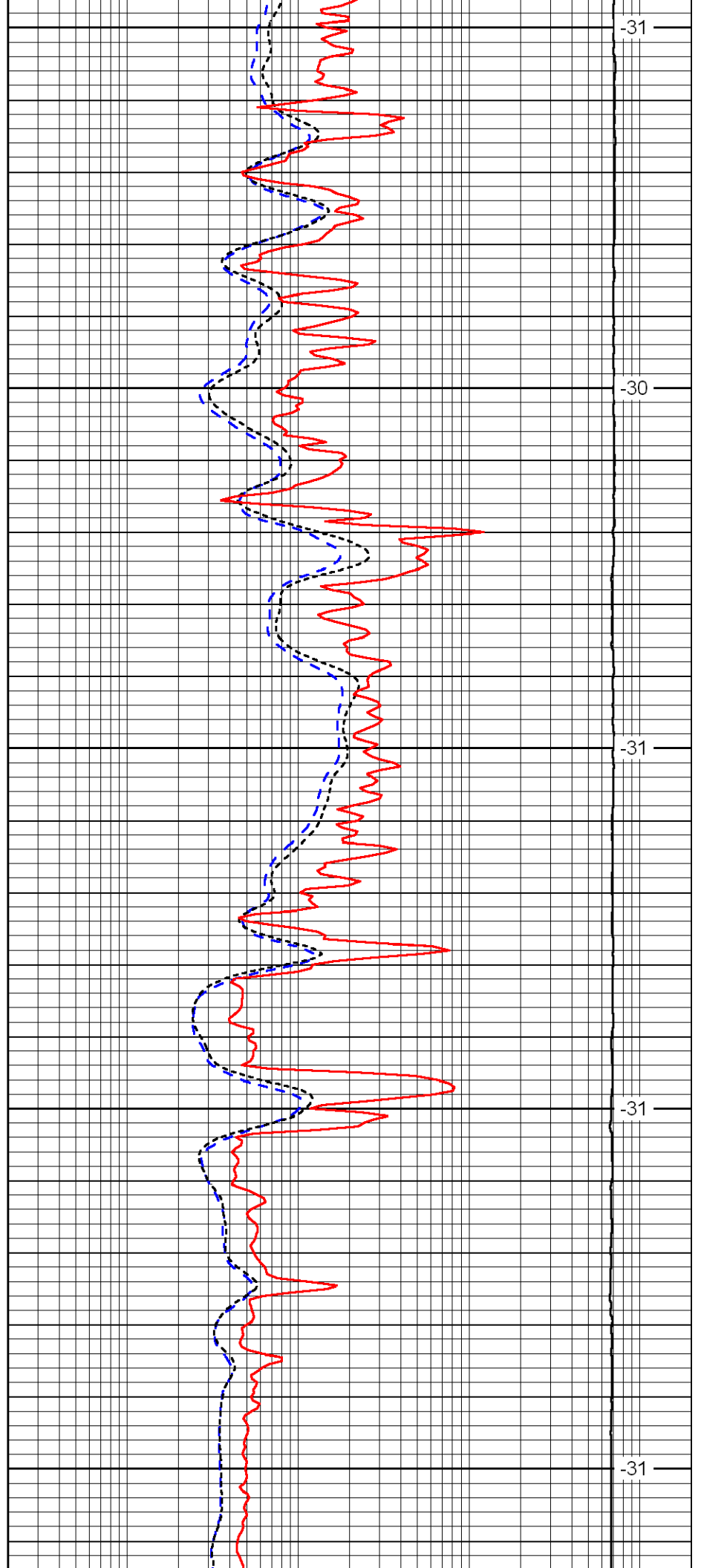
2700

2750

2800

2850

2900



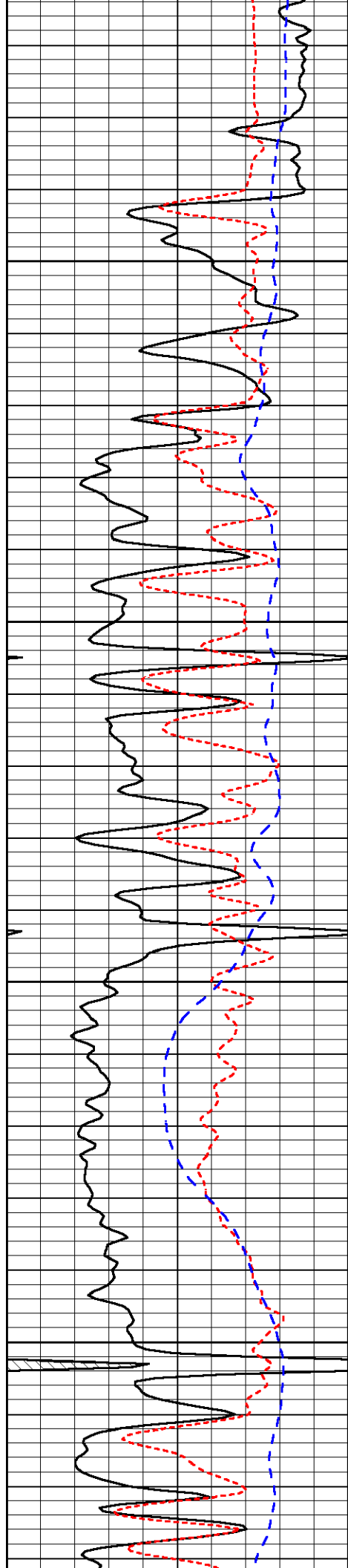
-31

-30

-31

-31

-31

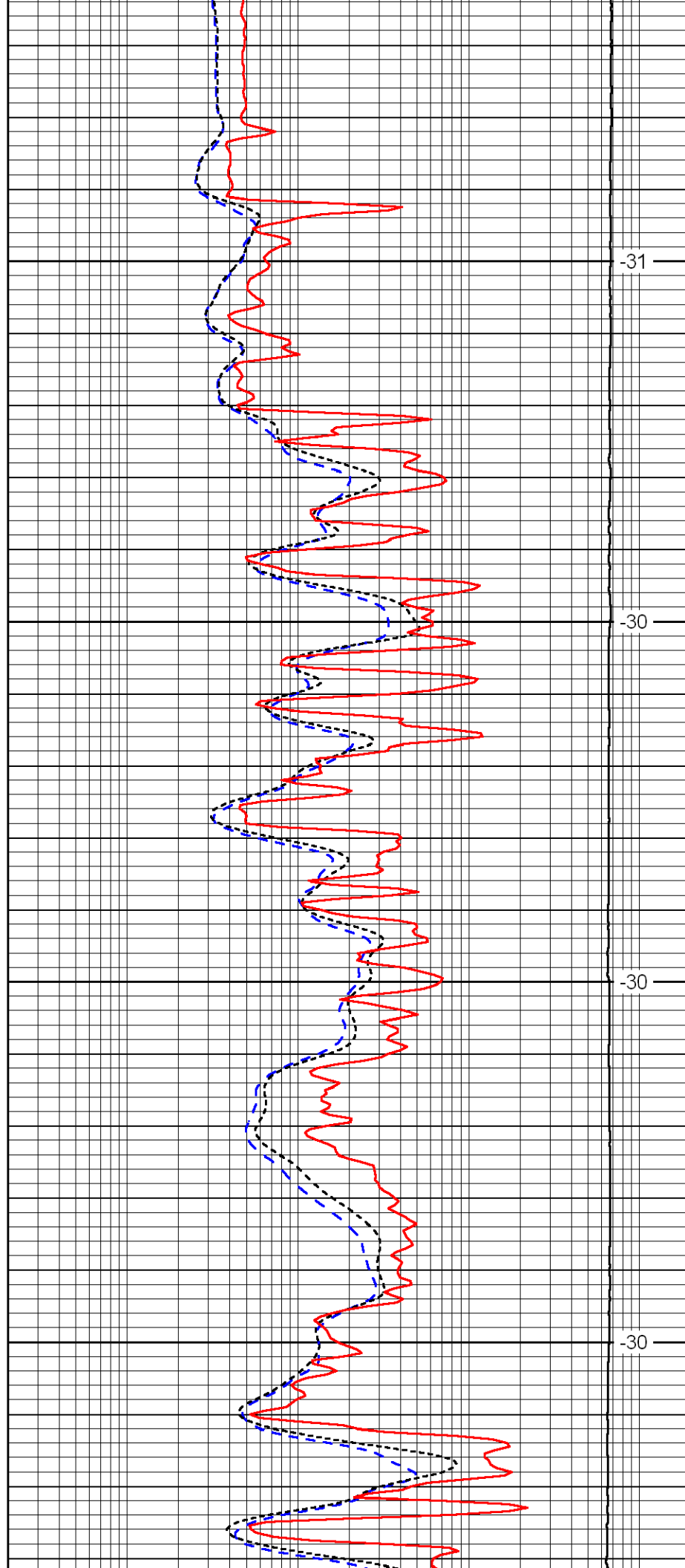


2950

3000

3050

3100

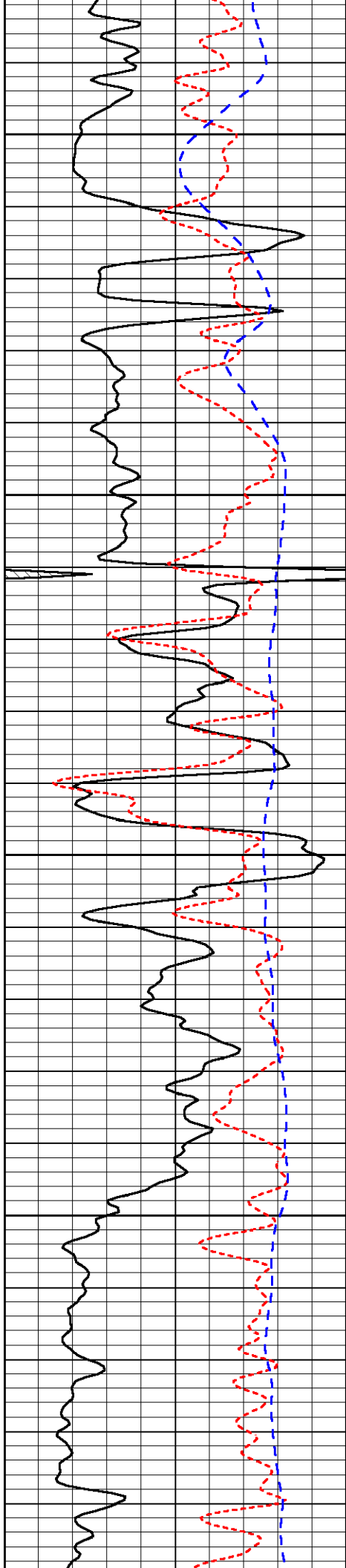


-31

-30

-30

-30

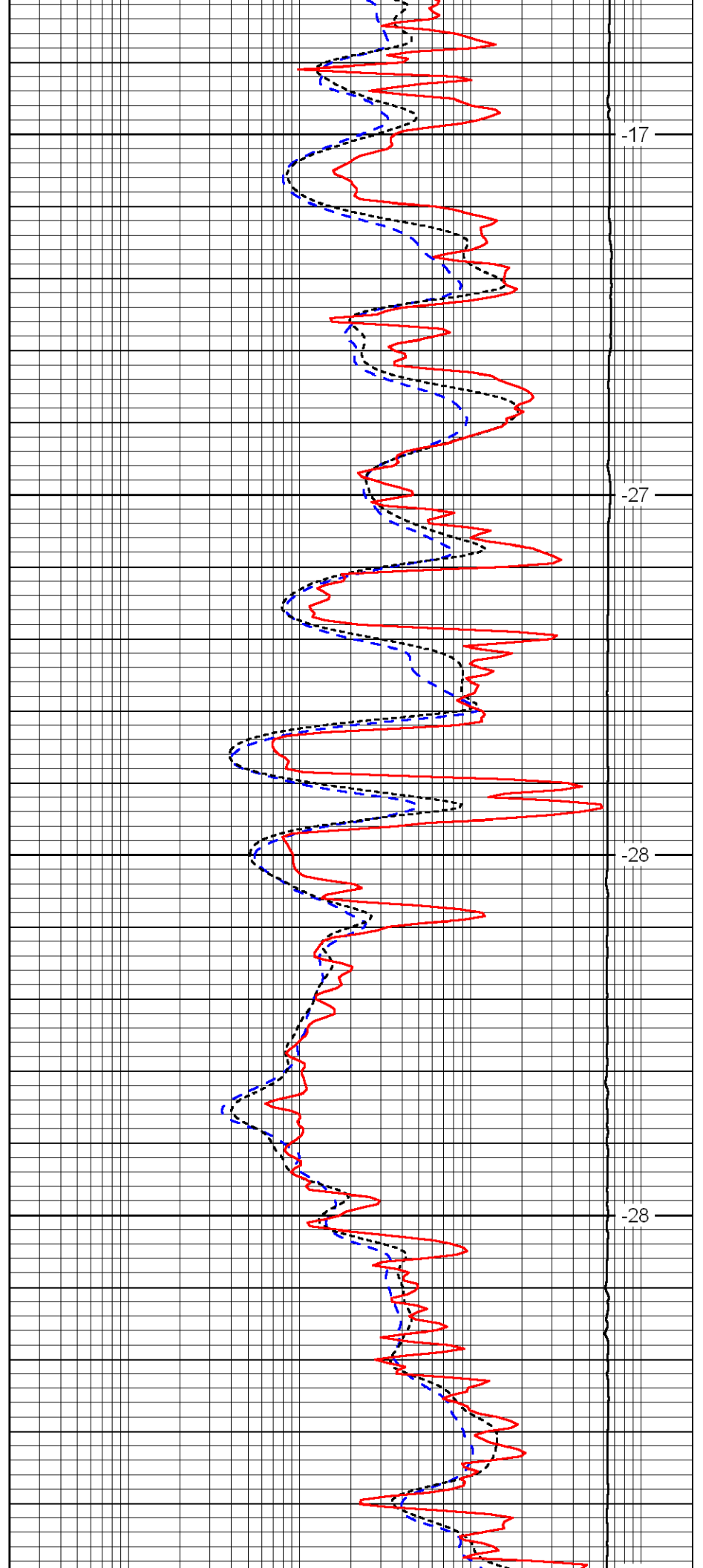


3150

3200

3250

3300

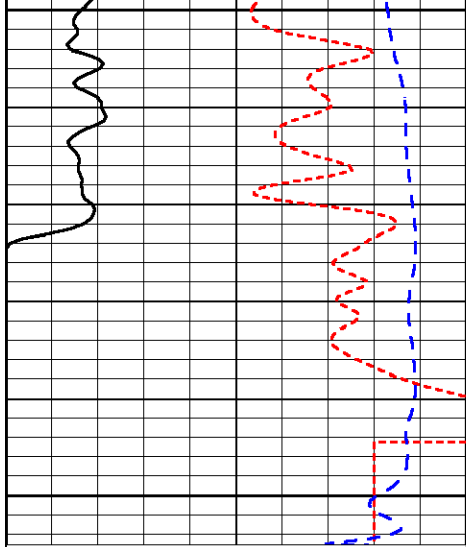


-17

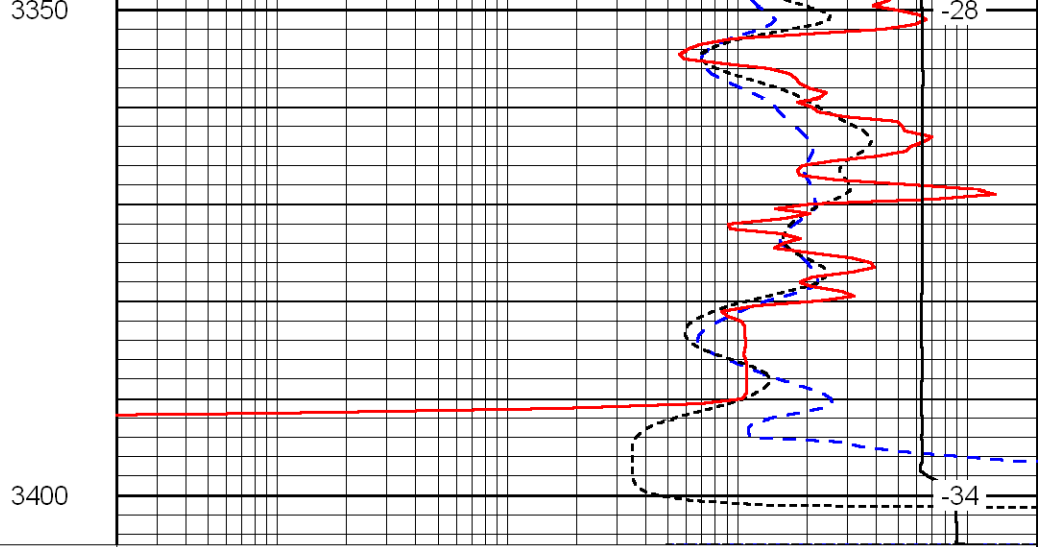
-27

-28

-28



0	Gamma Ray	150
-160	RXO/RT	40
-200	SP	0



0.2	Deep Resistivity	2000
0.2	Medium Resistivity	2000
0.2	Shallow Resistivity	2000
10000	Line Tension	0

LSPD