



Microresistivity Log

DIGITAL LOG (785) 625-3858

API No.	15-193-20,798-00-00		
Company	Chaco Energy Company		
Well	Wilgers No.2		
Field	Wildcat		
County	Thomas	State	Kansas
Location	620' FNL & 1915' FWL		
Sec: 33	Twp: 10S	Rge: 33W	
Permanent Datum	Ground Level	Elevation	3177
Log Measured From	Kelly Bushing	10 Ft. Above Perm. Datum	
Drilling Measured From	Kelly Bushing		
		Other Services	CNL/CDL DIL/BHCS
		Elevation	K.B. 3187 D.F. 3177 G.L. 3177

Date	6/13/2011
Run Number	Two
Depth Driller	4825
Depth Logger	4823
Bottom Logged Interval	4822
Top Log Interval	3800
Casing Driller	8.625 @ 270
Casing Logger	265
Bit Size	7.875
Type Fluid in Hole	Chemical
Salinity, ppm CL	4.700
Density / Viscosity	9.2 57
pH / Fluid Loss	10.0 8.0
Source of Sample	Flowline
Rm @ Meas. Temp	.6 @ 77
Rmf @ Meas. Temp	.45 @ 77
Rmc @ Meas. Temp	.81 @ 77
Source of Rmf / Rmc	Charts
Rm @ BHT	.37 @ 126
Operating Rig Time	4 1/2 Hours
Max Rec. Temp. F	126
Equipment Number	17
Location	Hays
Recorded By	C. Desaire
Witnessed By	Austin Garner

<<< Fold Here >>>

All interpretations are opinions based on inferences from electrical or other measurements and we cannot and do not guarantee the accuracy or correctness of any interpretation, and we shall not, except in the case of gross or willful negligence on our part, be liable or responsible for any loss, costs, damages, or expenses incurred or sustained by anyone resulting from any interpretation made by any of our officers, agents or employees. These interpretations are also subject to our general terms and conditions set out in our current Price Schedule.

Comments

Thank you for using Log-Tech, Inc.
(785) 625-3858

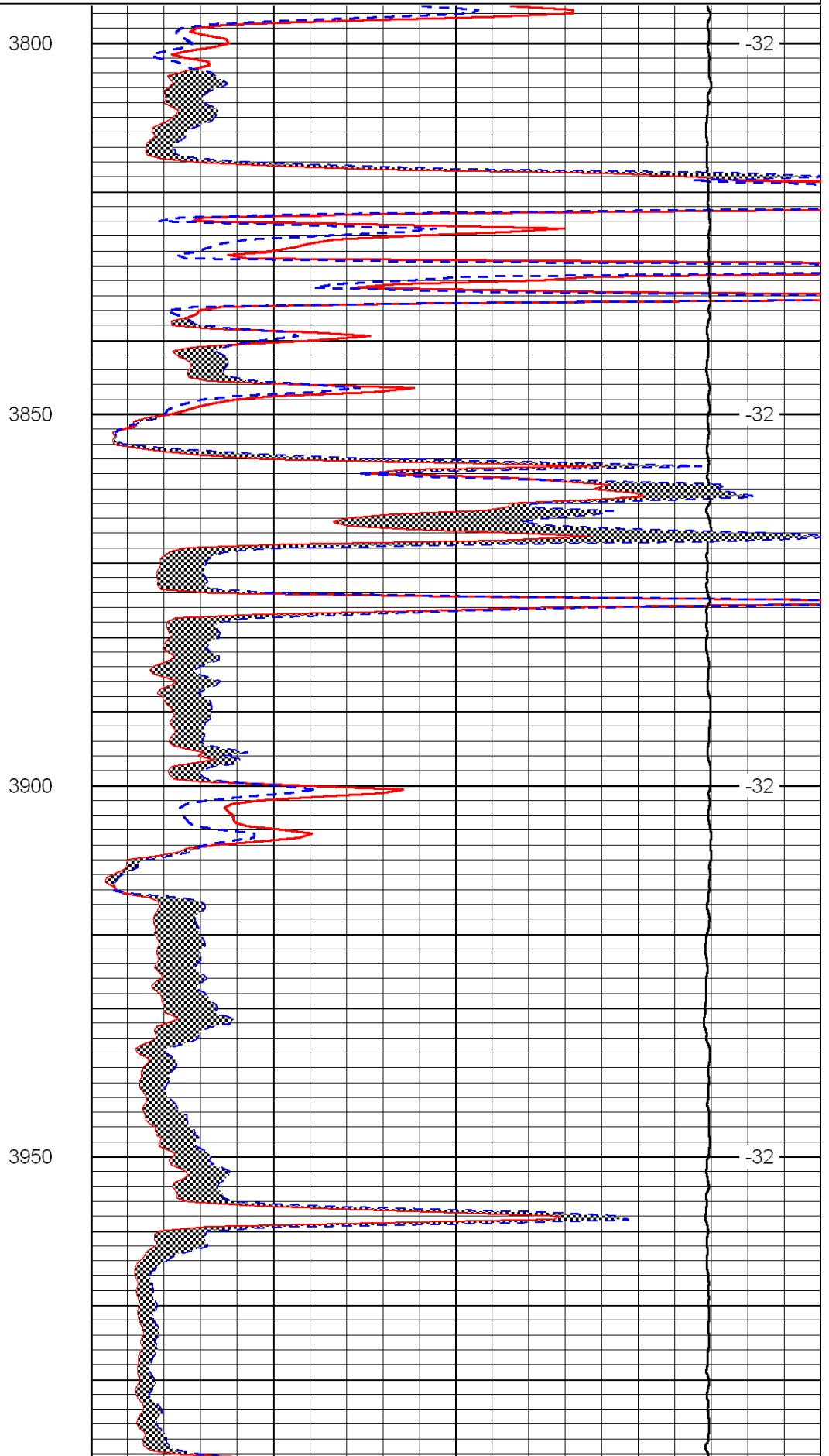
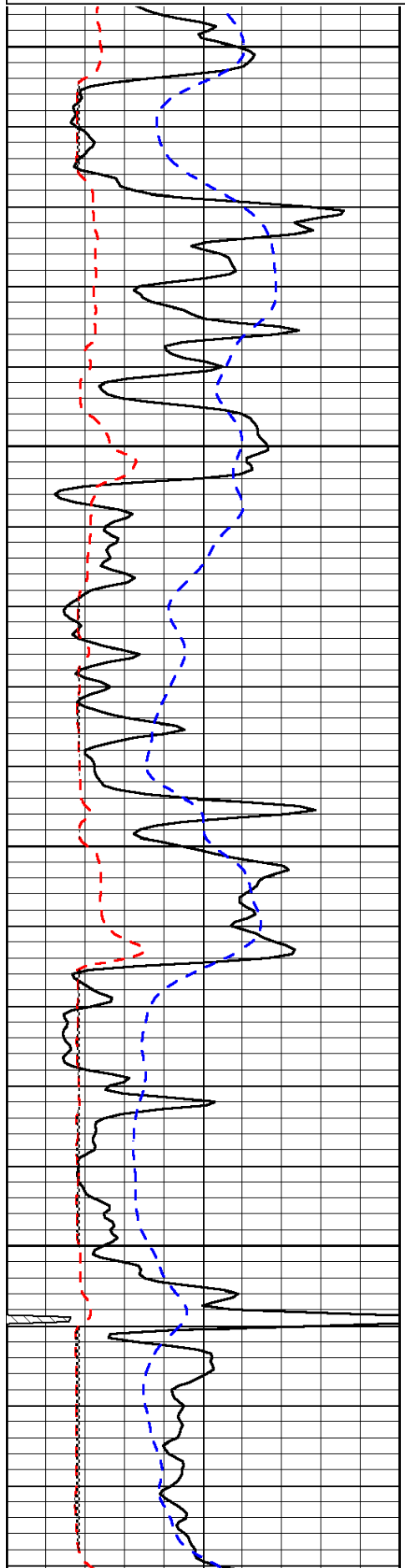
Monument, W Edge,
2 N on 350th Rd to T,
1/4 W, 1 N, E Into

Database File: c:\warrior\data\chaco energy_wilgers no.2\chaco hd.db
 Dataset Pathname: dil/chcostk
 Presentation Format: micro
 Dataset Creation: Tue Jun 14 01:59:30 2011
 Charted by: Depth in Feet scaled 1:240

0	Gamma Ray	150
6	Micro Log Caliper (GAPI)	16
-200	SP (mV)	0

0	Micro Inverse 1 X 1	40
0	Micro Normal 2"	40
15000	Line Weight	0

LSPD



3800

-32

3850

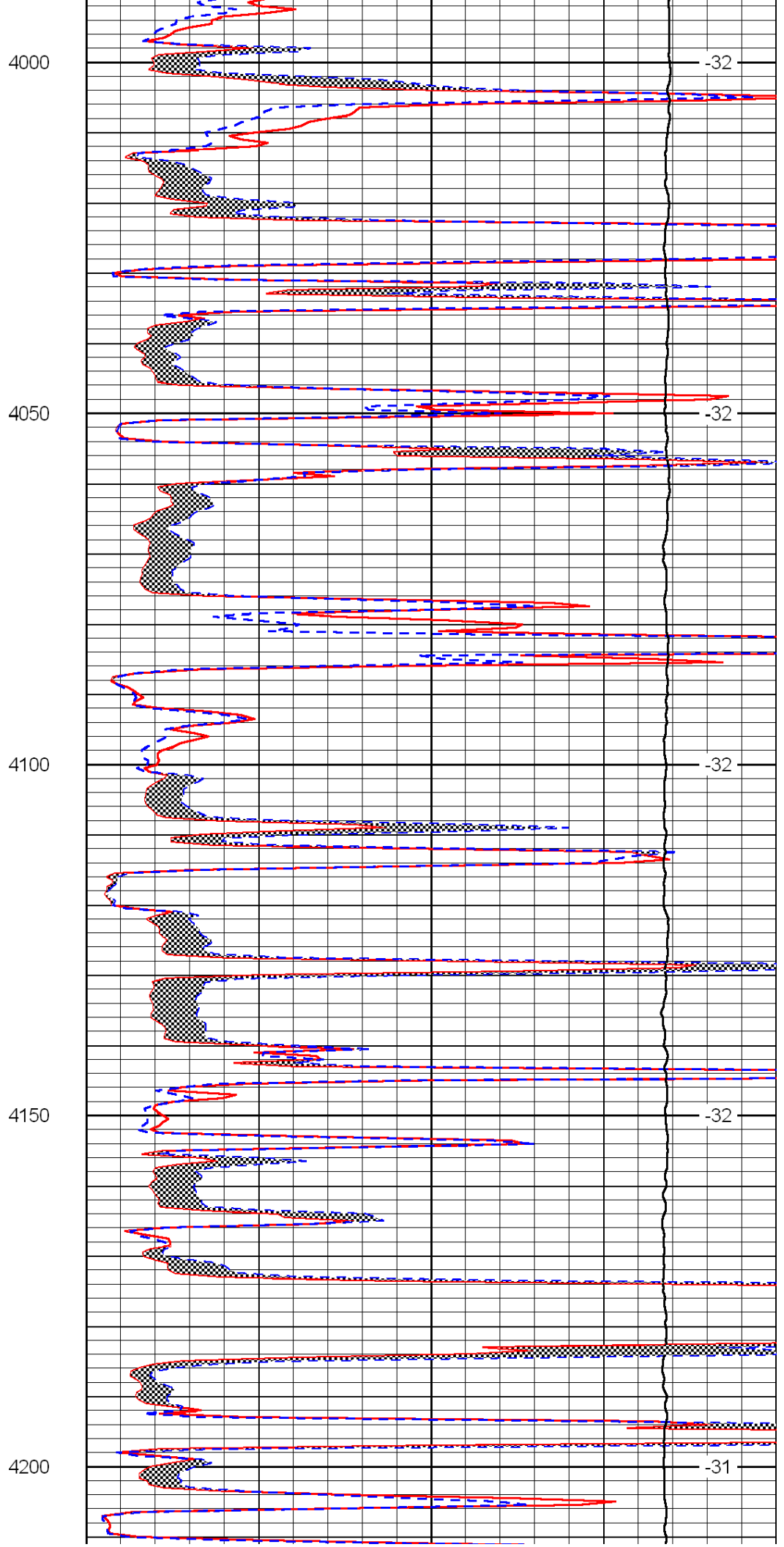
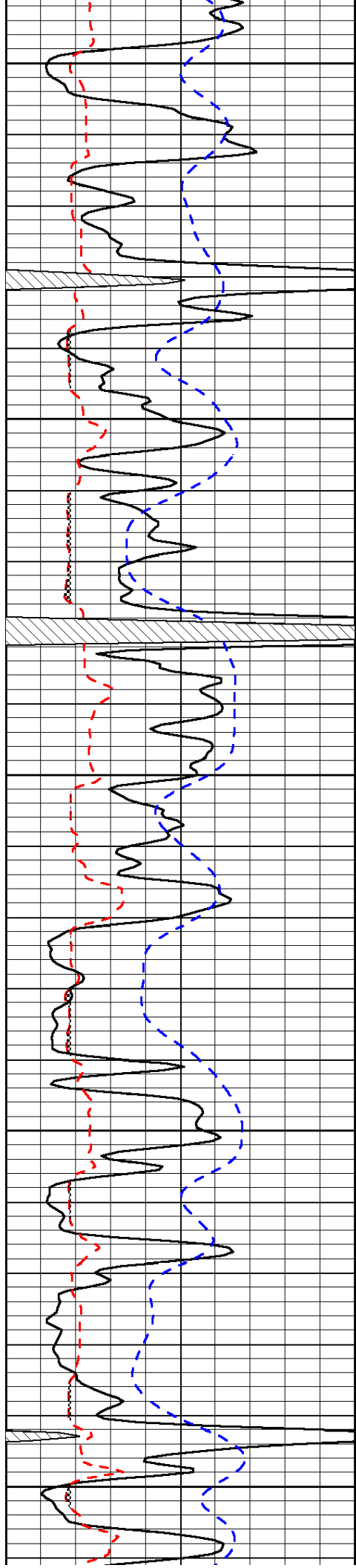
-32

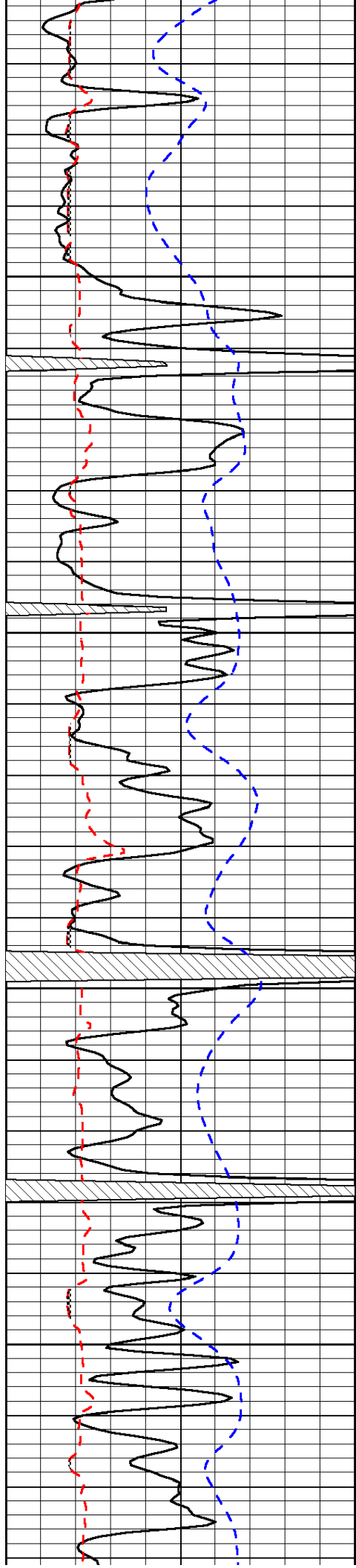
3900

-32

3950

-32



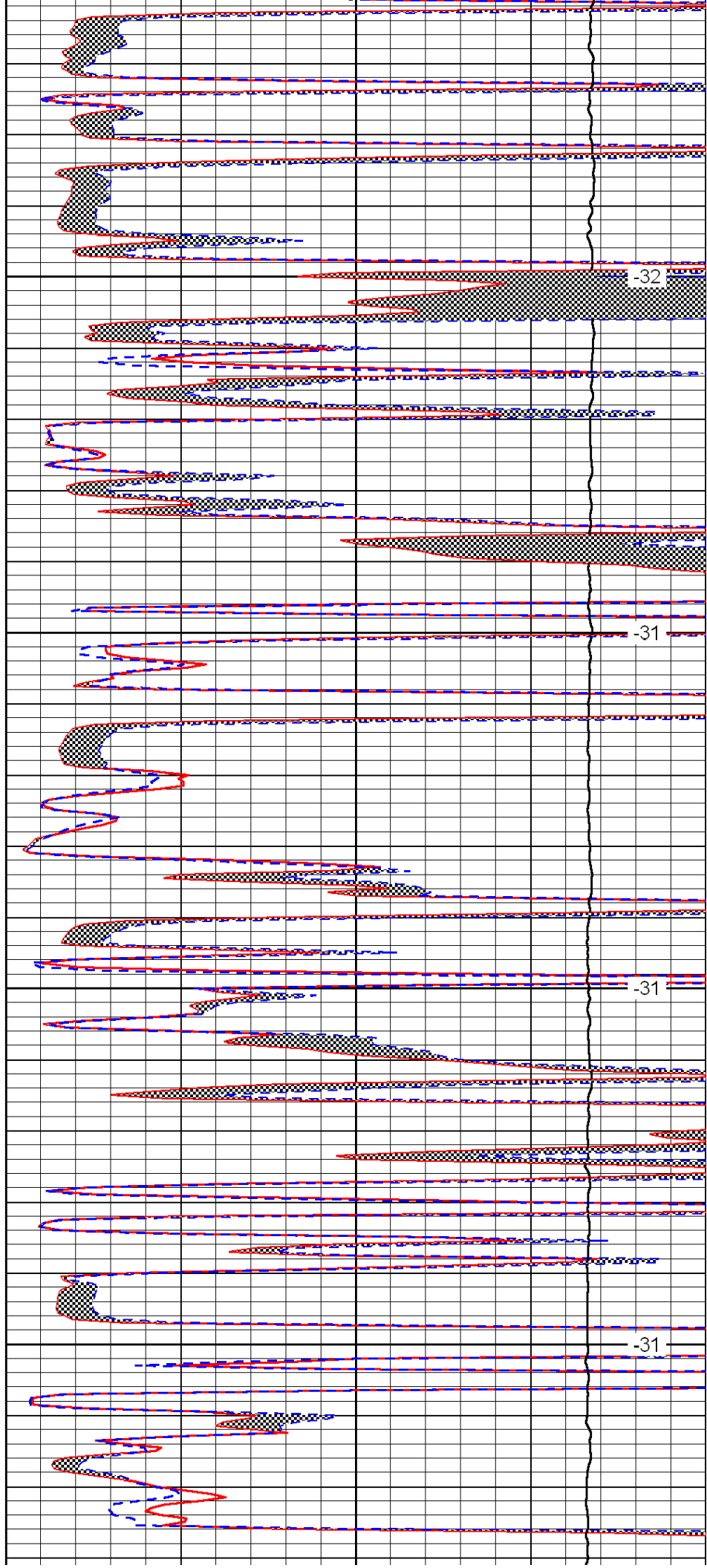


4250

4300

4350

4400

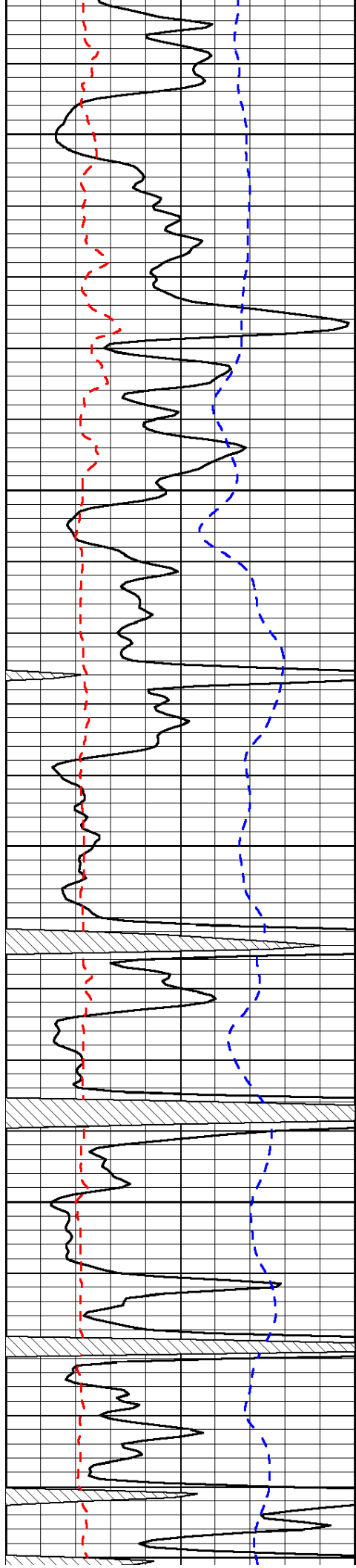


-32

-31

-31

-31



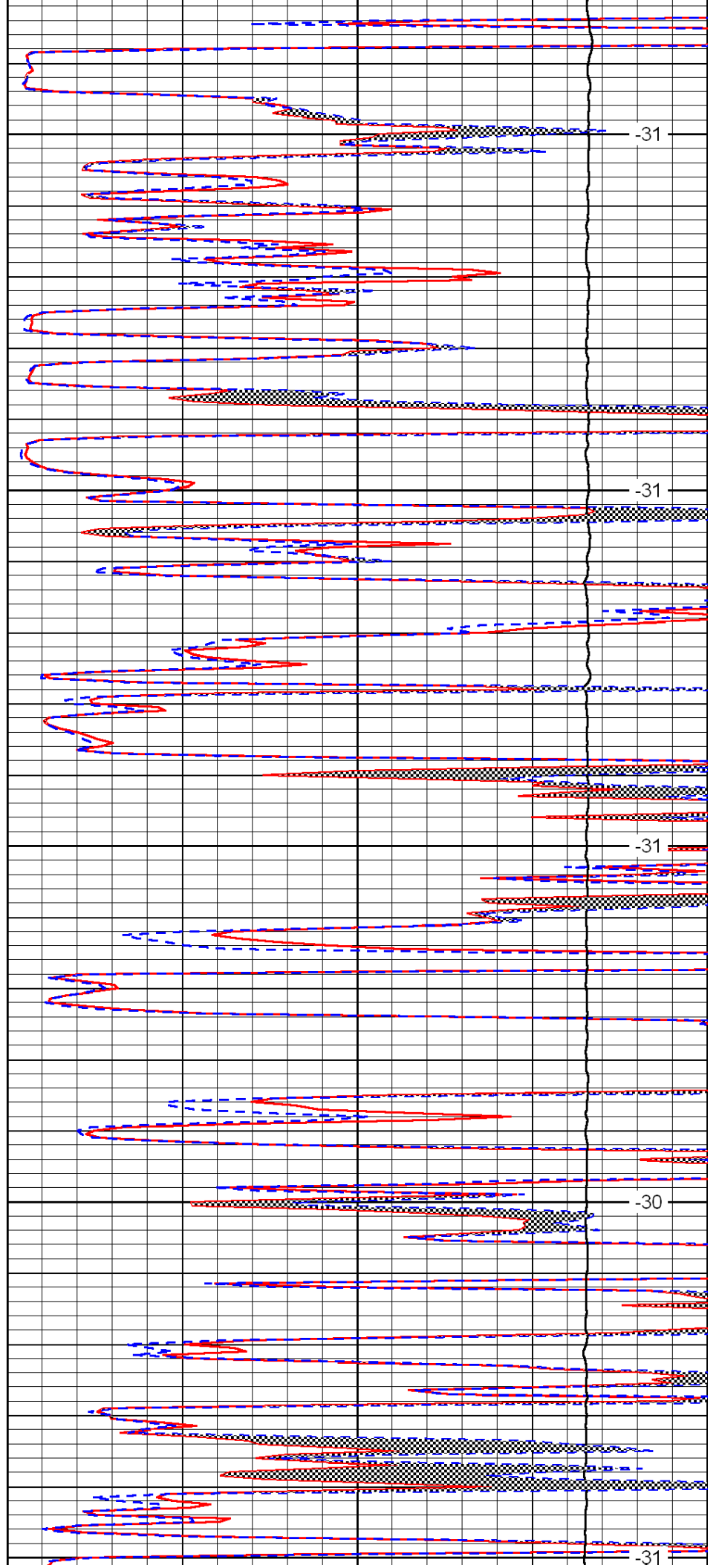
4450

4500

4550

4600

4650



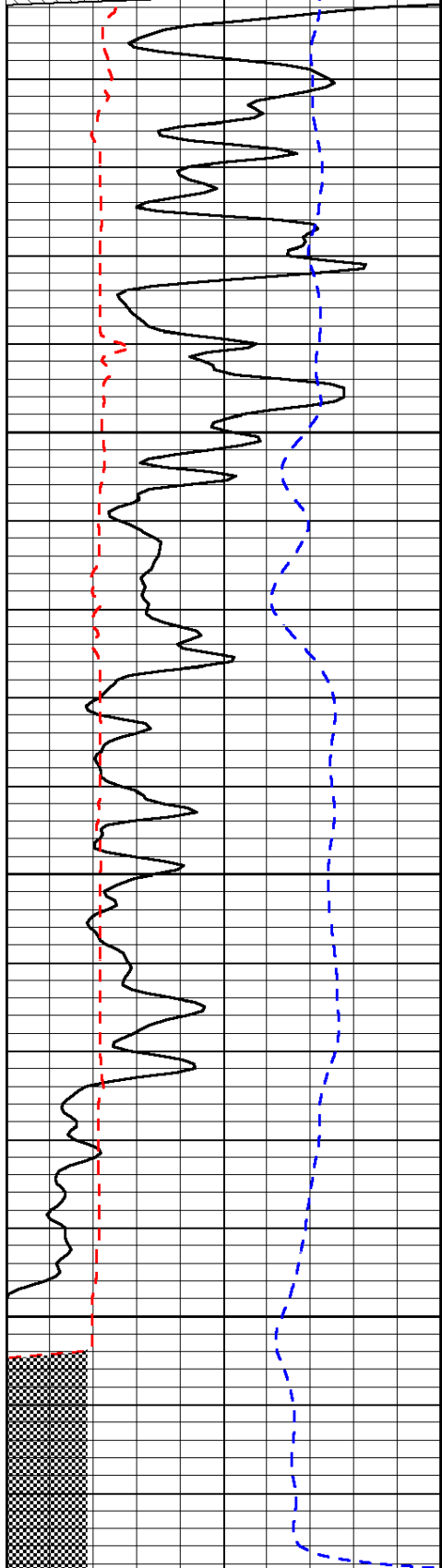
-31

-31

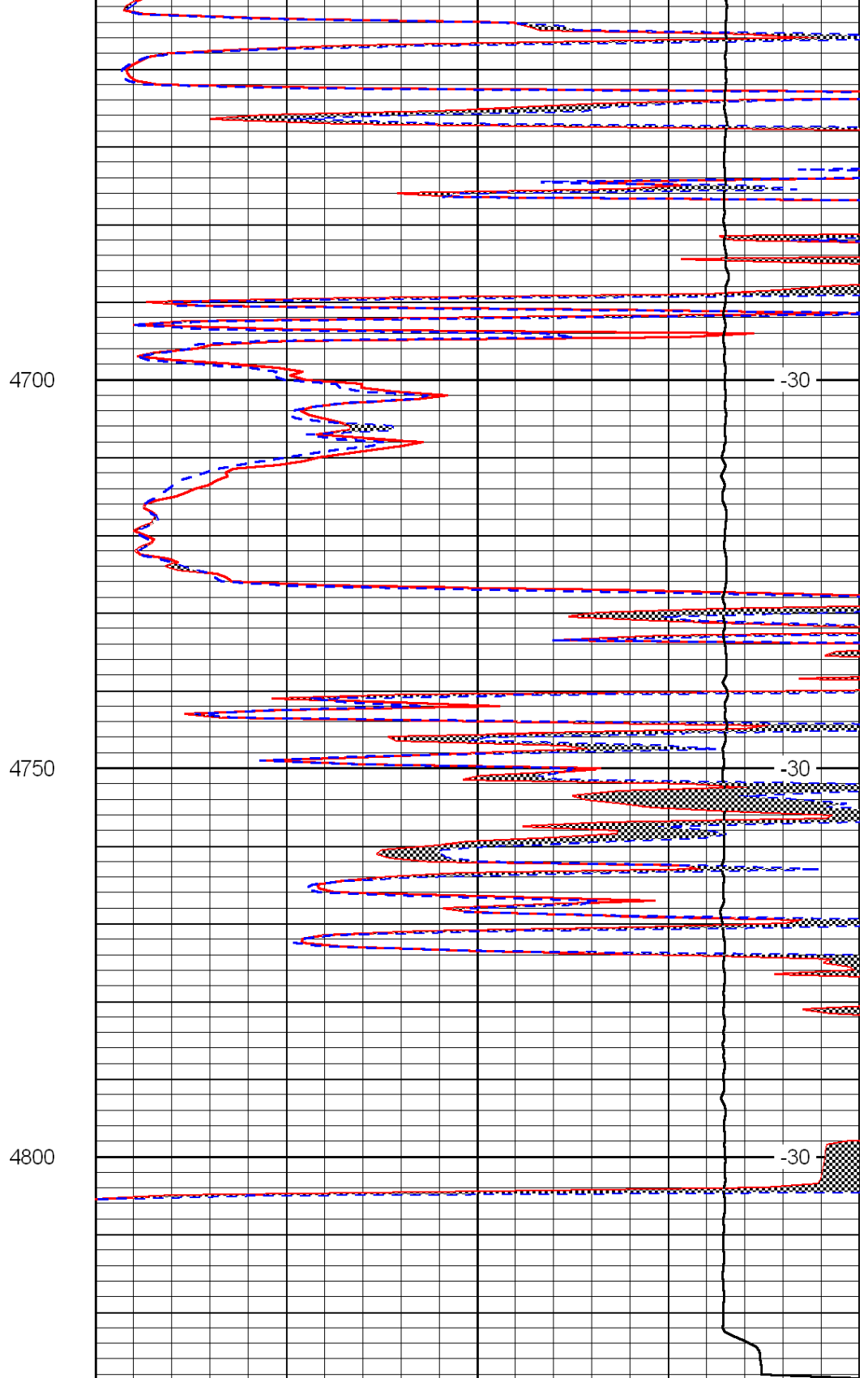
-31

-30

-31



0	Gamma Ray	150
6	Micro Log Caliper (GAPI)	16
-200	SP (mV)	0



0	Micro Inverse 1 X 1	40
0	Micro Normal 2''	40
15000	Line Weight	0

LSPD