



DIGITAL LOG (785) 625-3858

**Borehole Compensated
Sonic Log**

API No. 15-193-20,798-00-00

Company **Chaco Energy Company**
 Well **Wilgers No.2**
 Field **Wildcat**
 County **Thomas** State **Kansas**

Location **620' FNL & 1915' FWL**

Sec: **33** Twp: **10S** Rge: **33W**

Other Services
CNL/CDL
MEL/DIL

Permanent Datum **Ground Level** Elevation **3177**
 Log Measured From **Kelly Bushing** 10 Ft. Above Perm. Datum
 Drilling Measured From **Kelly Bushing**

K.B. 3187
D.F. G.L. 3177

Date **6/13/2011**

Run Number **Two**

Type Log **BHC Sonic**

Depth Driller **4825**

Depth Logger **4823**

Bottom Logged Interval **4812**

Top Logged Interval **250**

Type Fluid In Hole **Chemical**

Salinity, PPM CL **4.700**

Density **9.2**

Level **Full**

Max. Rec. Temp. F **126**

Operating Rig Time **4 1/2 Hours**

Equipment -- Location **17 Hays**

Recorded By **C. Desaire**

Witnessed By **Austin Garner**

Borehole Record				Casing Record			
Run No.	Bit	From	To	Size	Wgt.	From	To
1	12.25	00	270	8.625	24#	00	270
2	7.875	270	4825				

<<< Fold Here >>>

All interpretations are opinions based on inferences from electrical or other measurements and we cannot and do not guarantee the accuracy or correctness of any interpretation, and we shall not, except in the case of gross or willful negligence on our part, be liable or responsible for any loss, costs, damages, or expenses incurred or sustained by anyone resulting from any interpretation made by any of our officers, agents or employees. These interpretations are also subject to our general terms and conditions set out in our current Price Schedule.

Comments

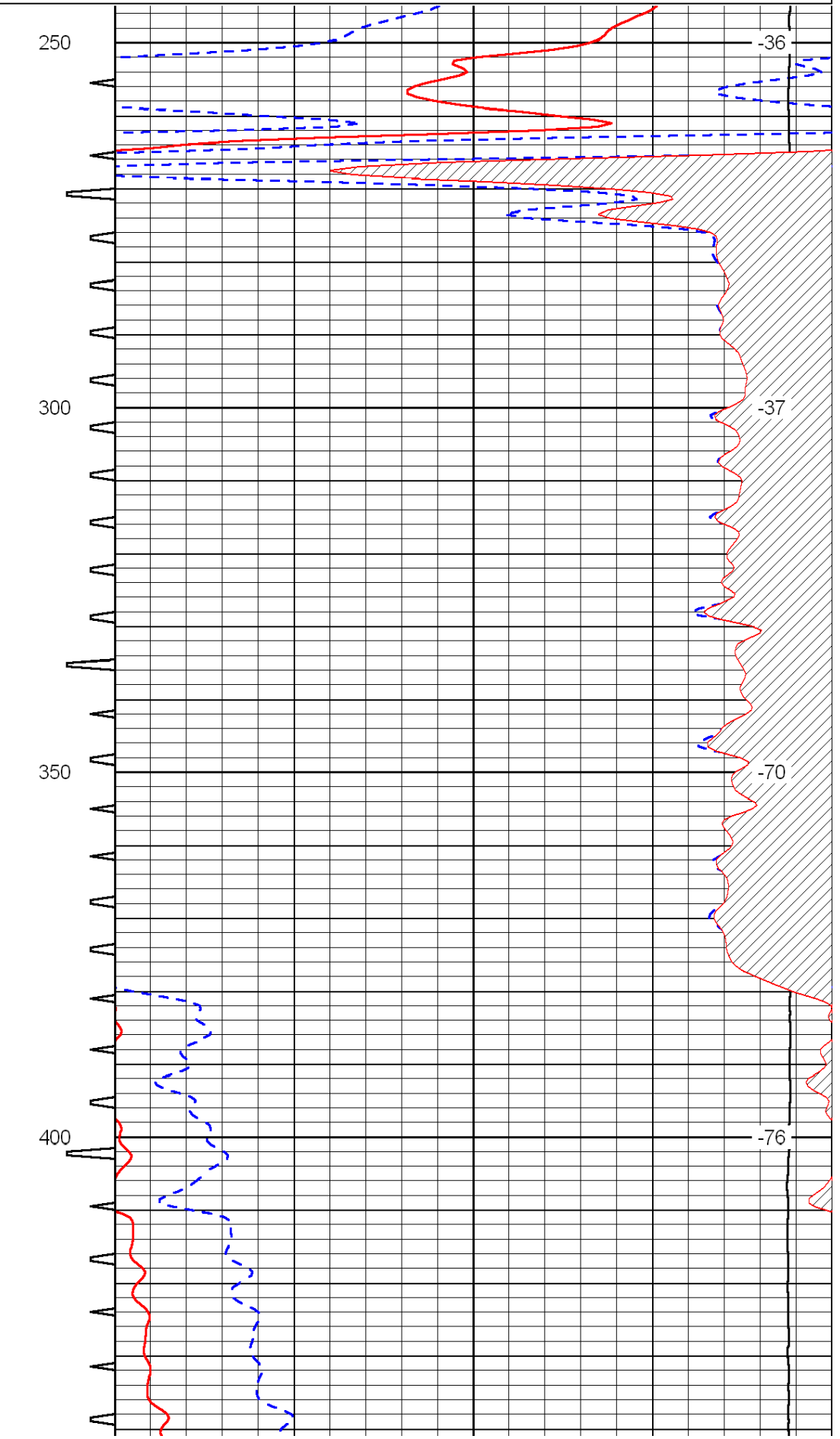
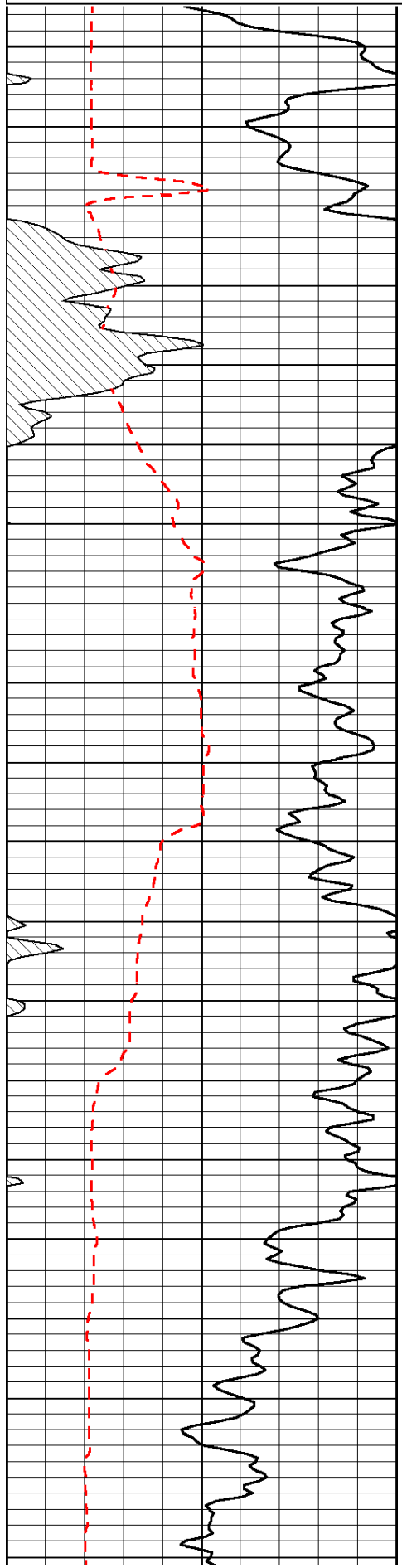
Thank you for using Log-Tech, Inc.
 (785) 625-3858

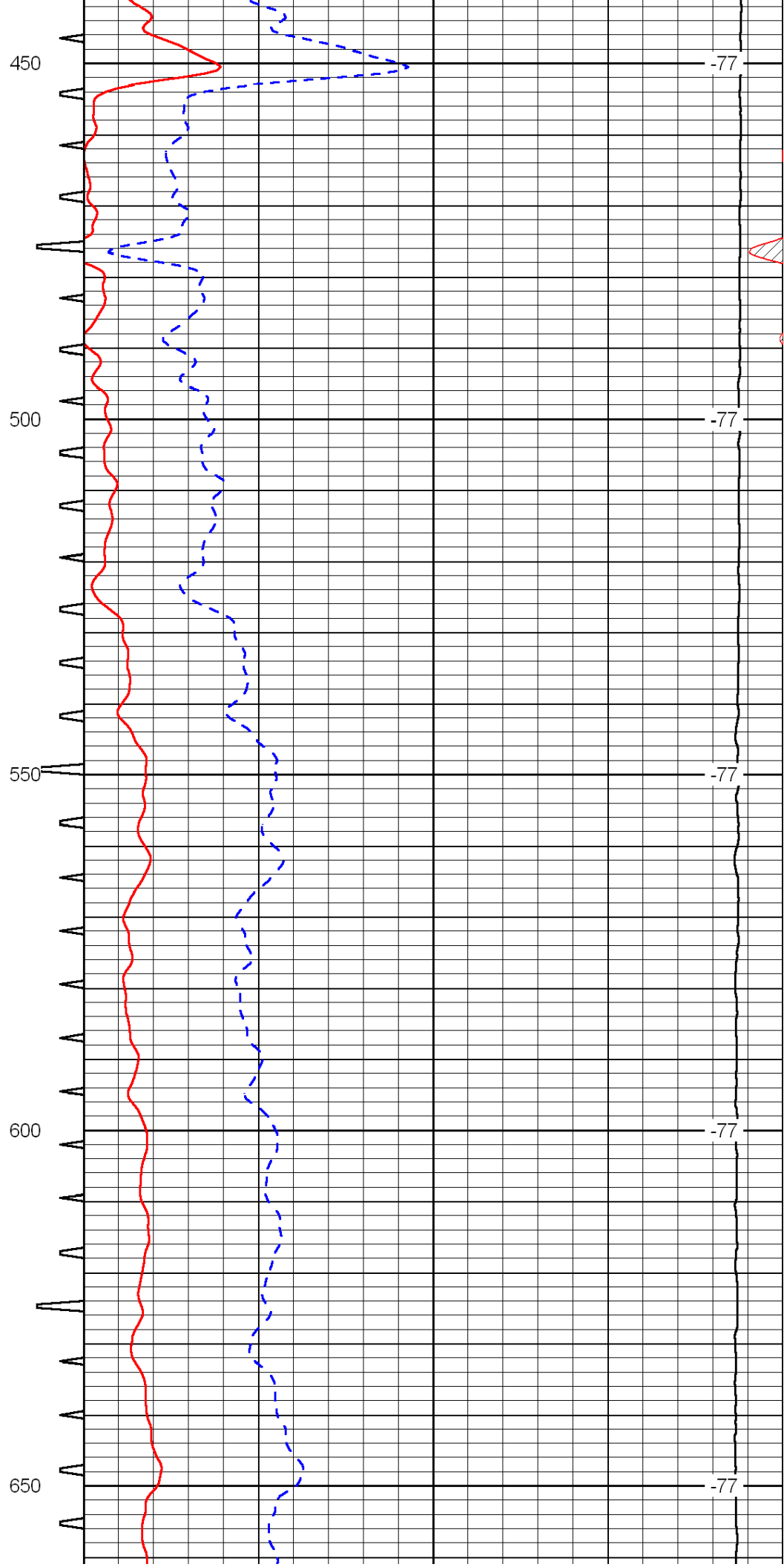
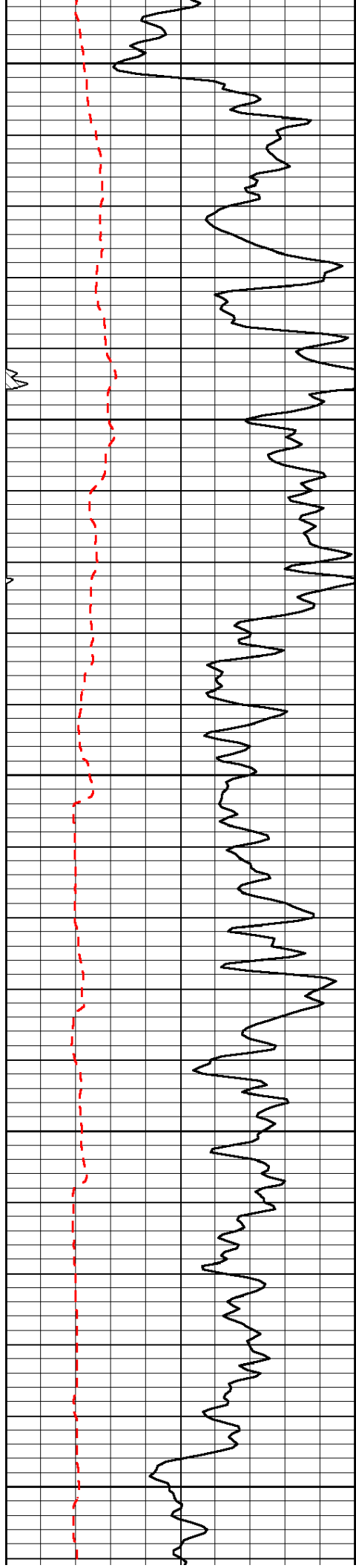
Monument, W Edge,
 2 N on 350th Rd to T,
 1/4 W, 1 N, E Into

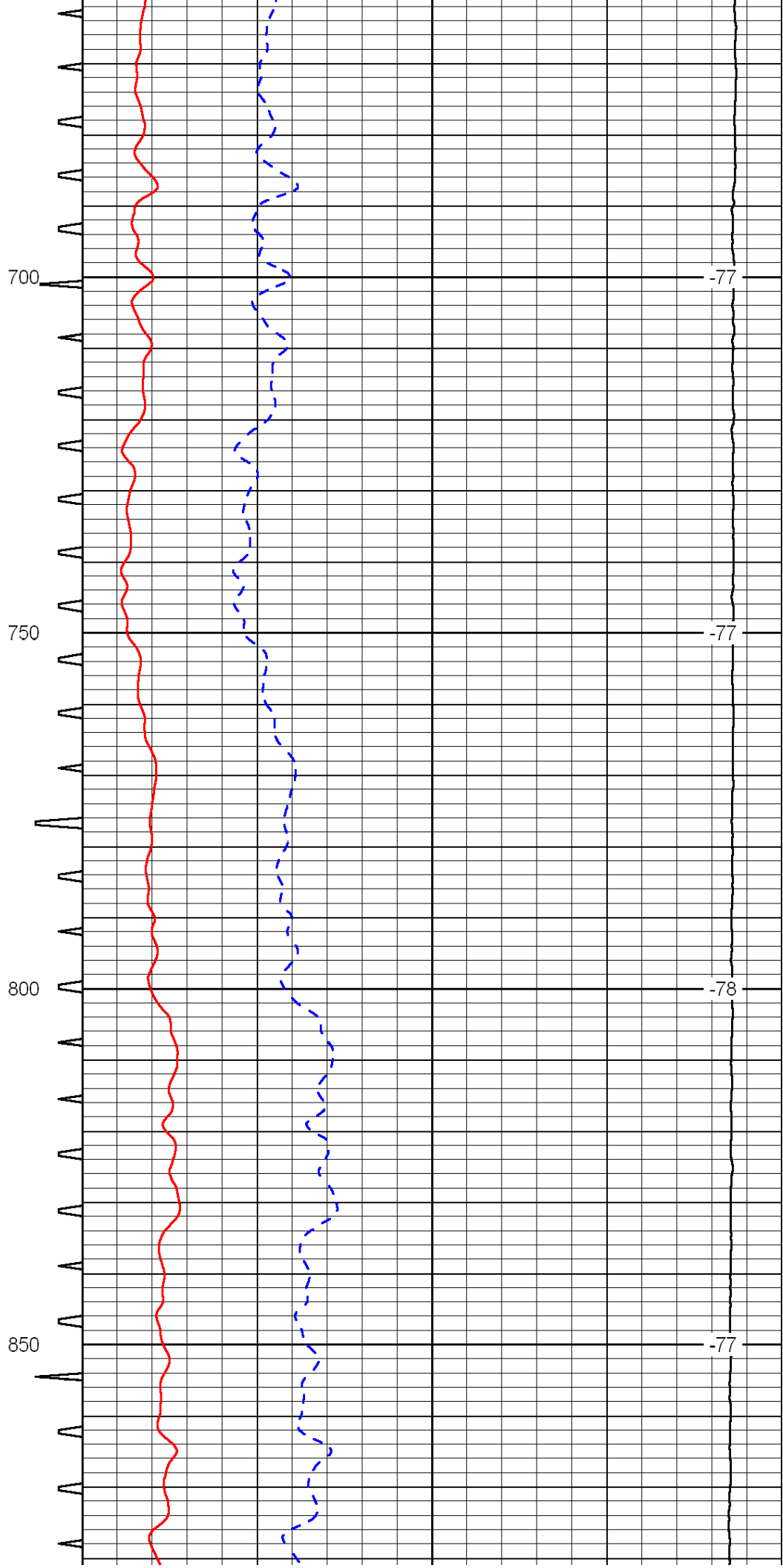
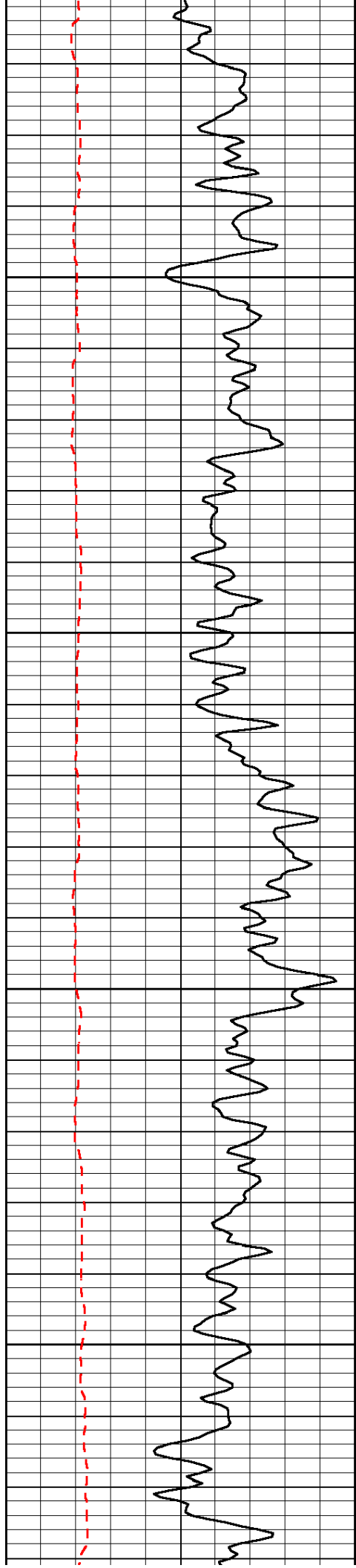
Database File: c:\warrior\data\chaco energy_wilgers no.2\chaco hd.db
 Dataset Pathname: dil/chcostk
 Presentation Format: sonic
 Dataset Creation: Tue Jun 14 01:59:30 2011
 Charted by: Depth in Feet scaled 1:240

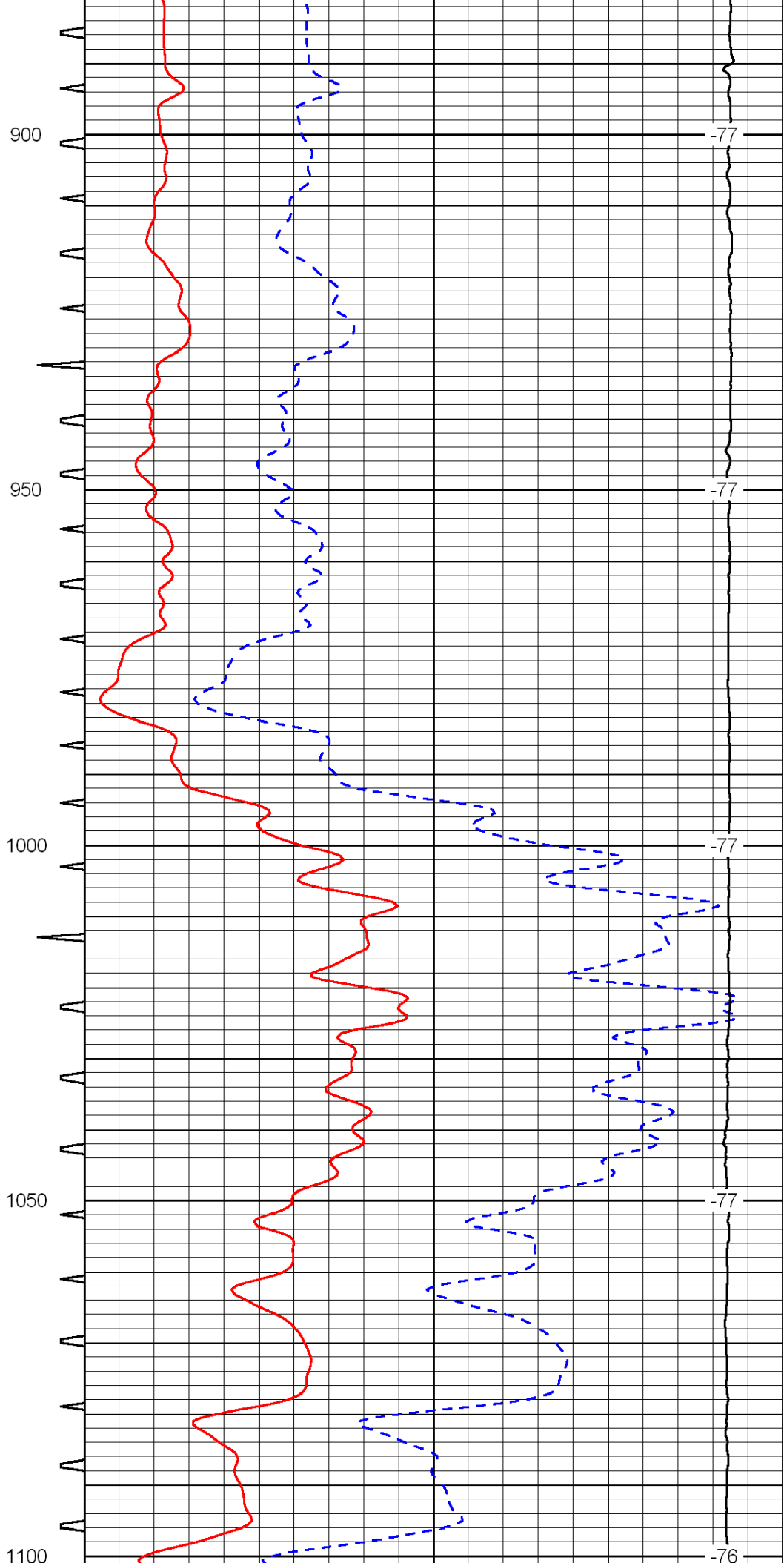
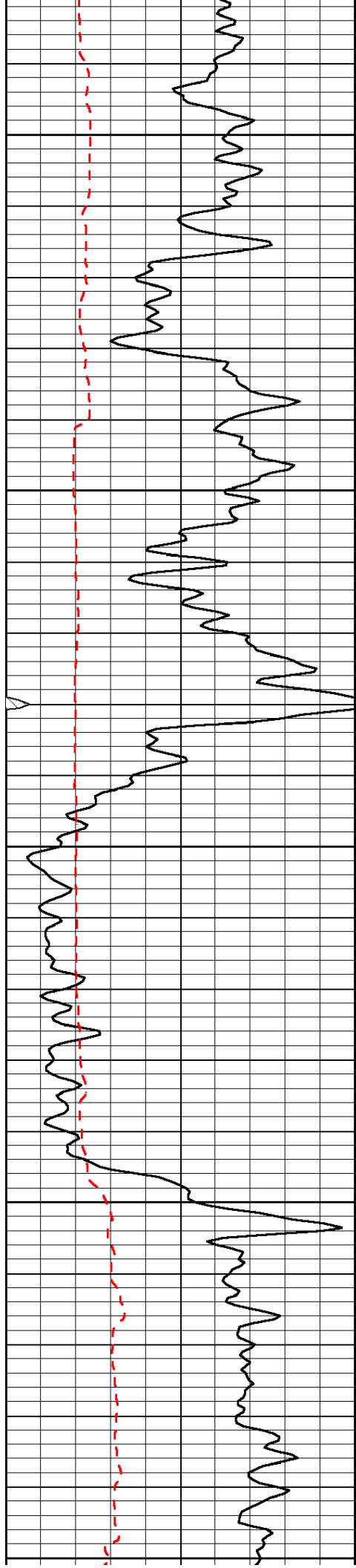
0	Gamma Ray	150	Sonic Int	140	Delta Time (usec/ft)	40
150	Gamma Ray	300	5	0	SPOR	-10
6	Caliper	16		15000	LTEN (lb)	0

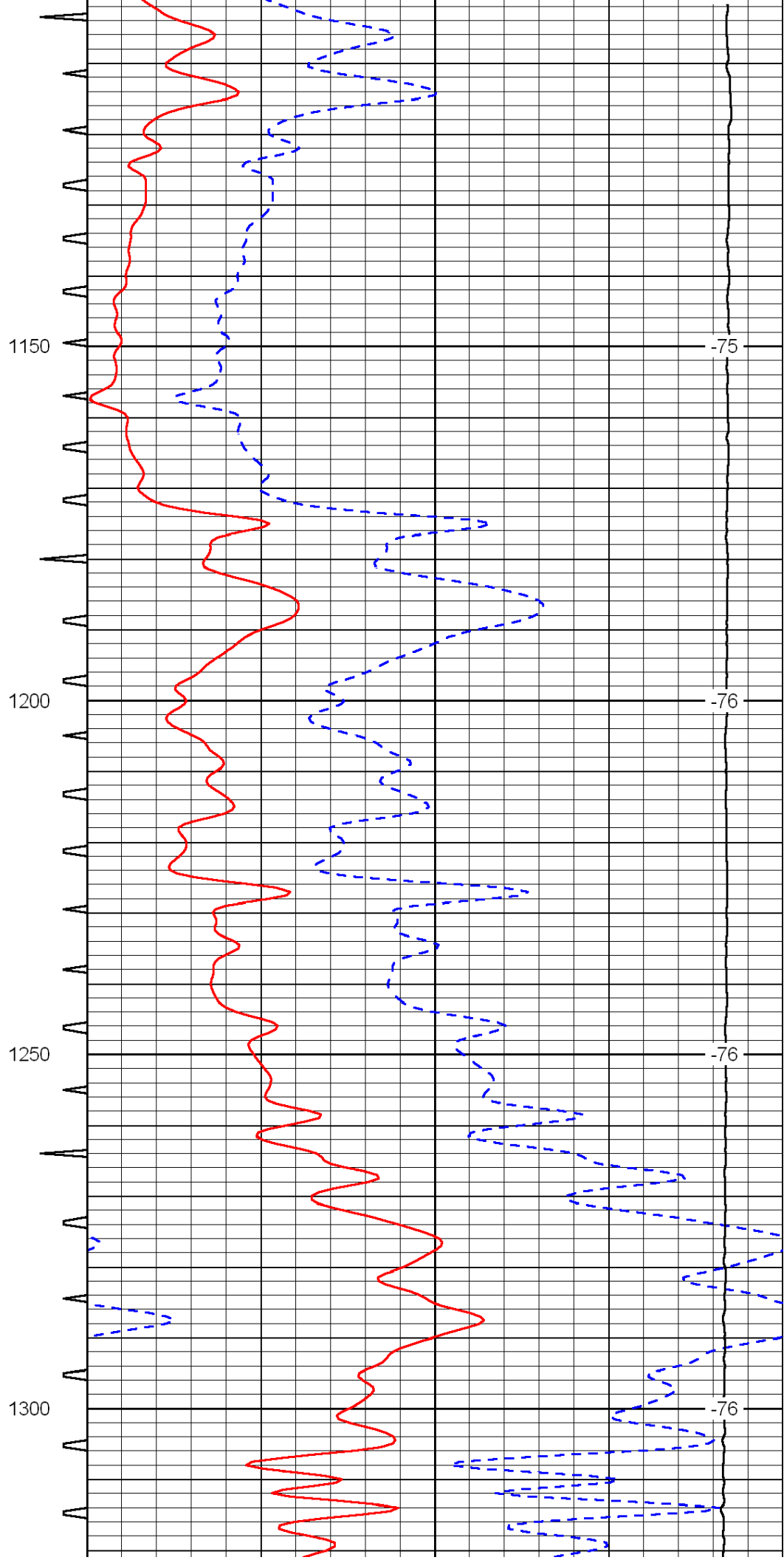
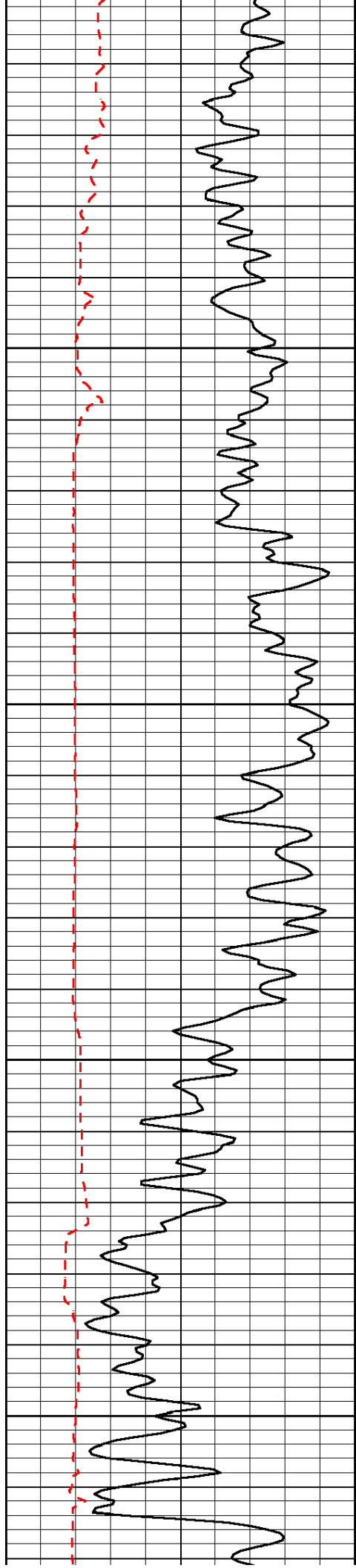
LSPD

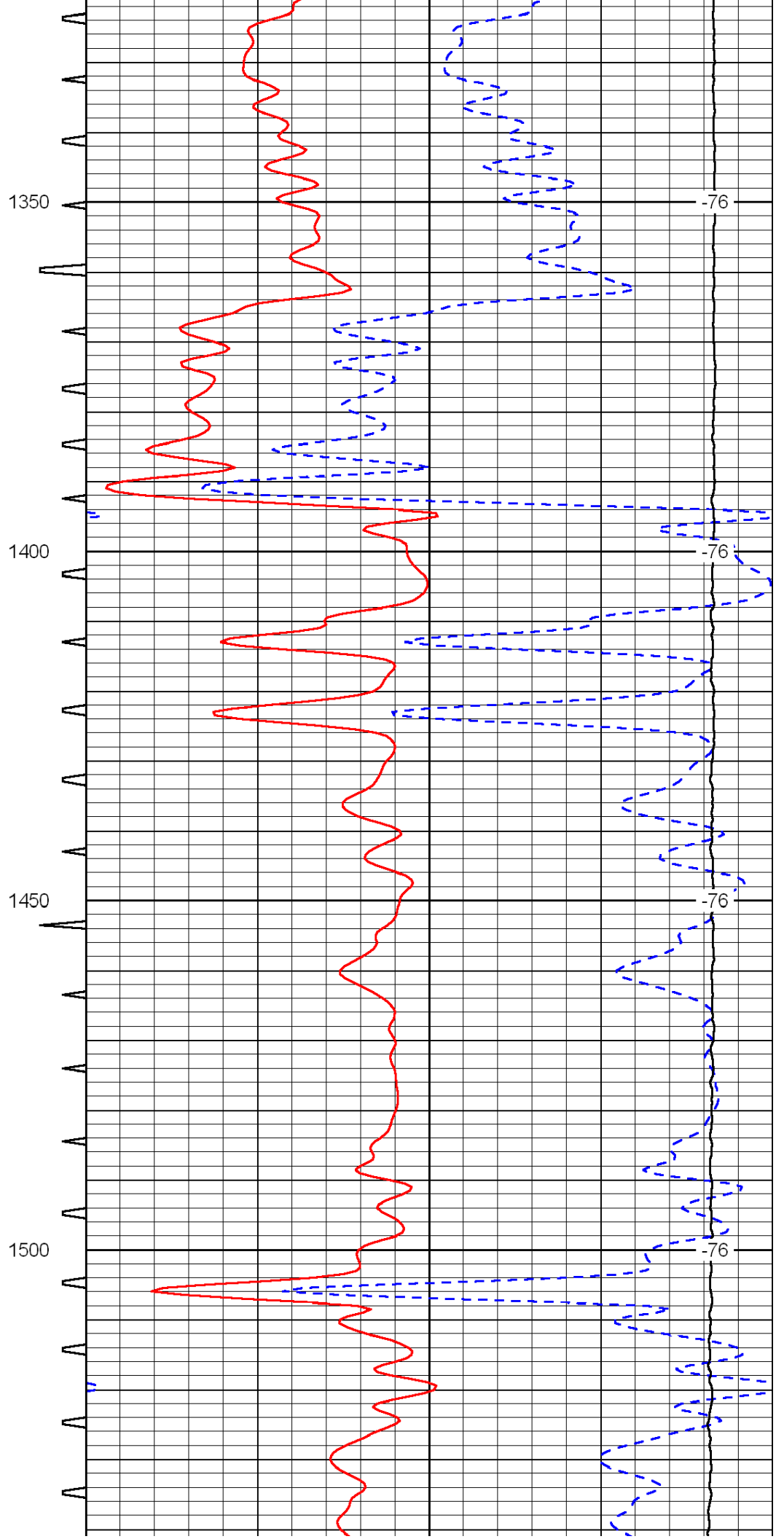
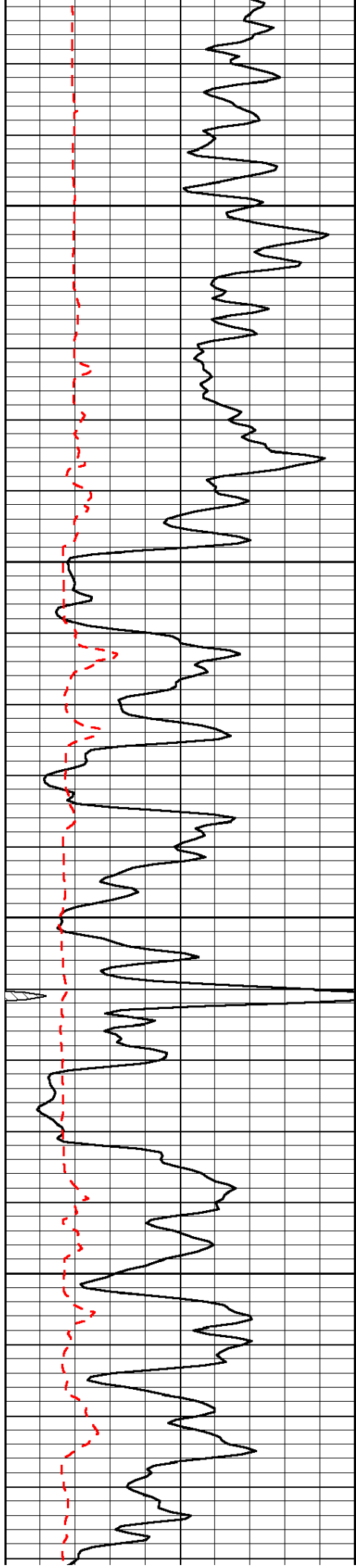


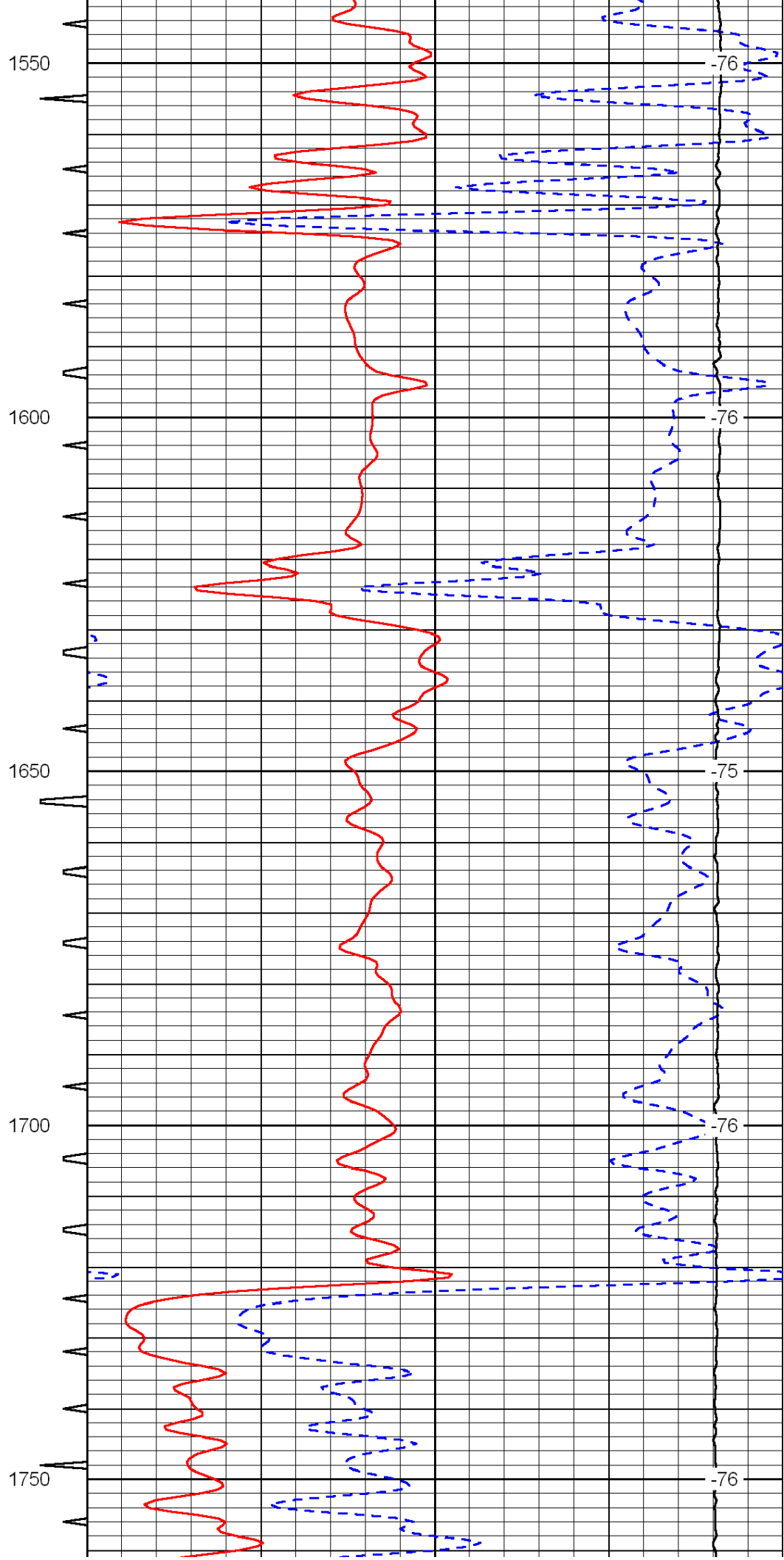
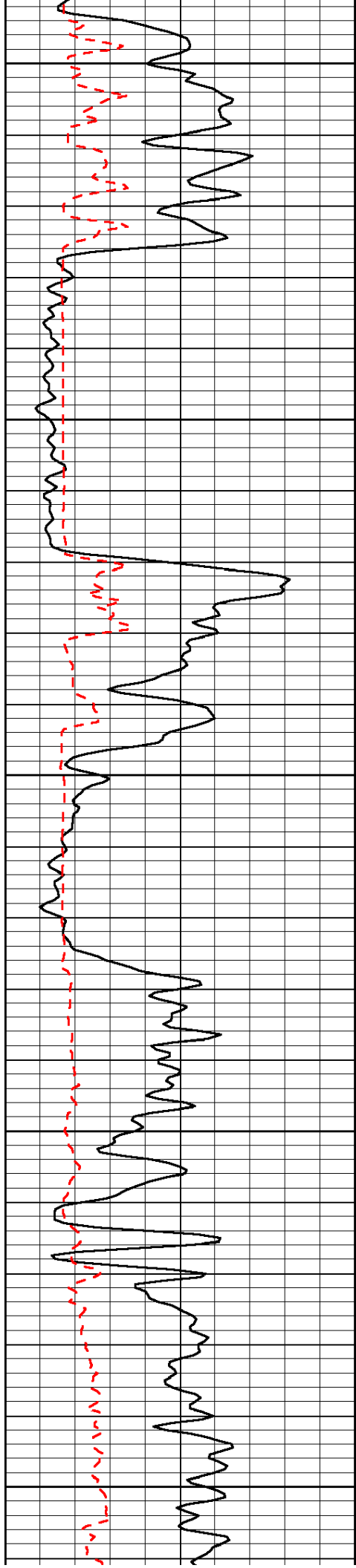


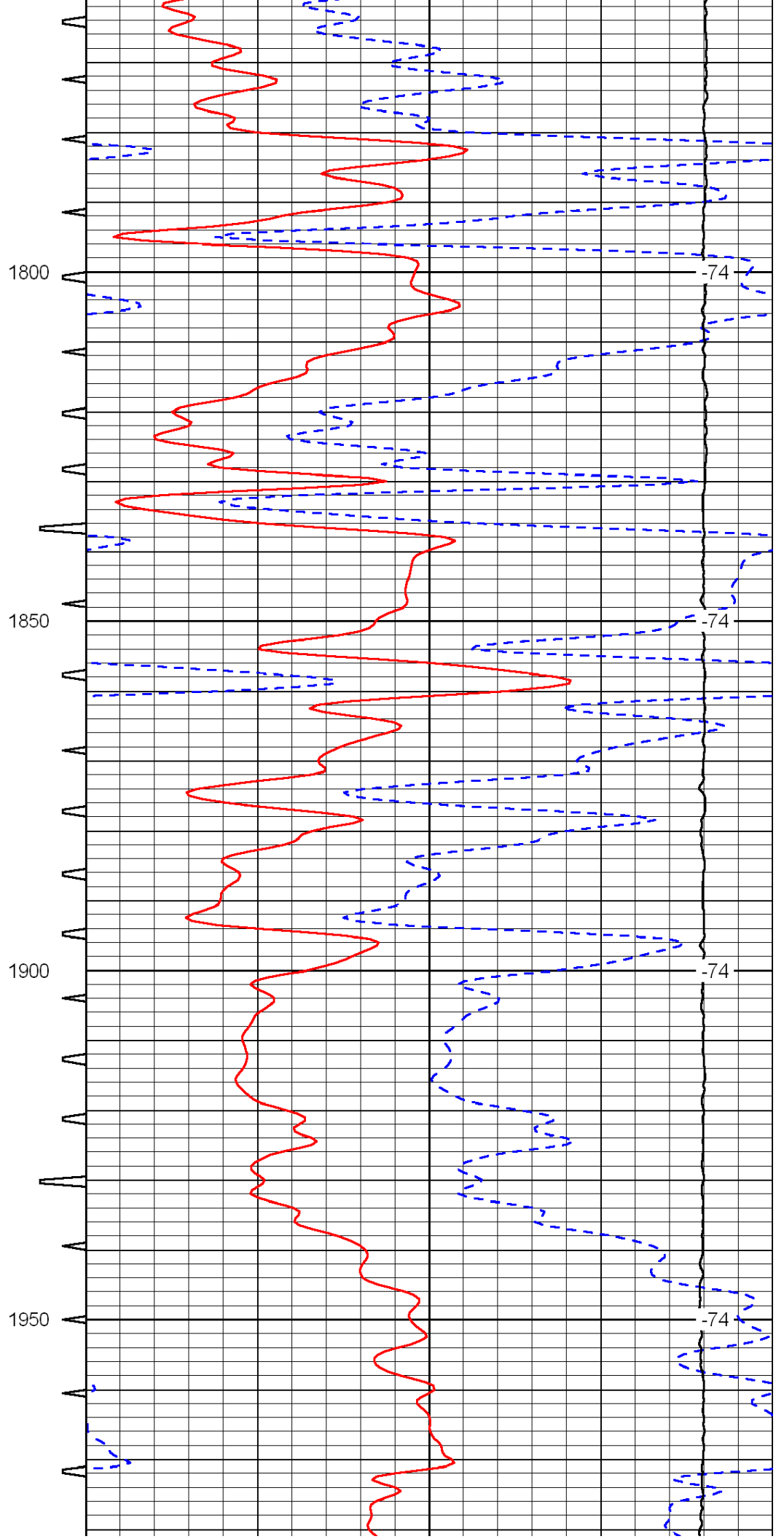
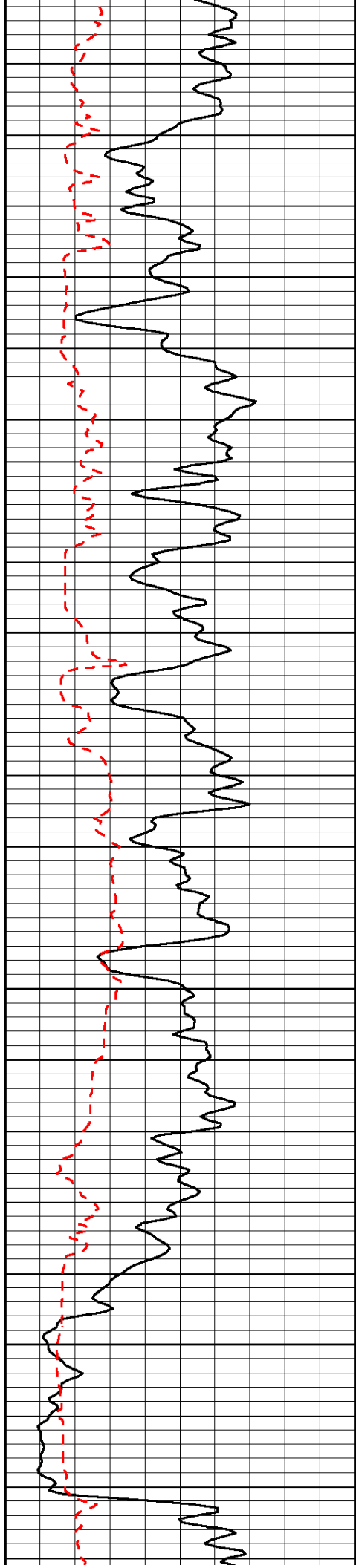


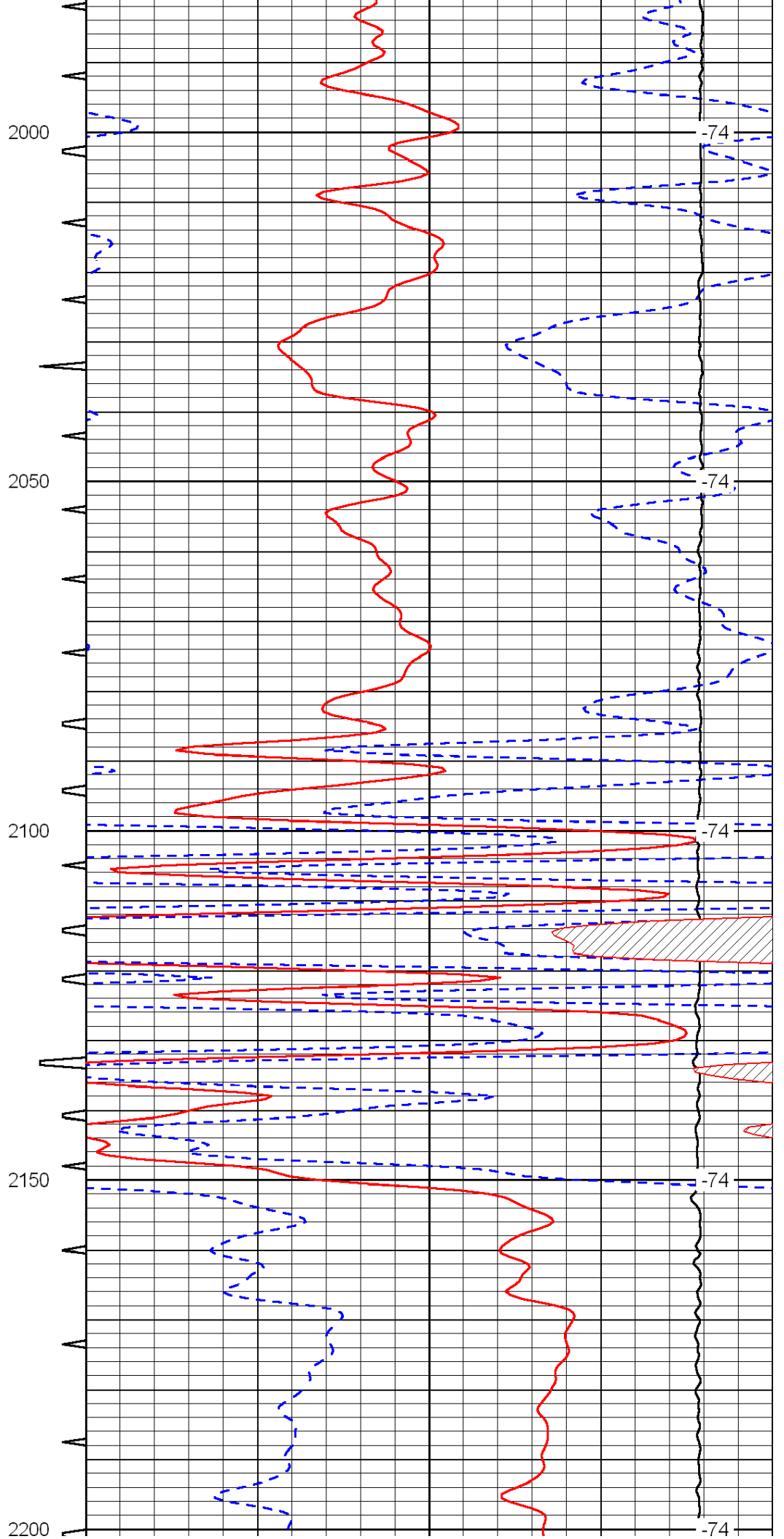
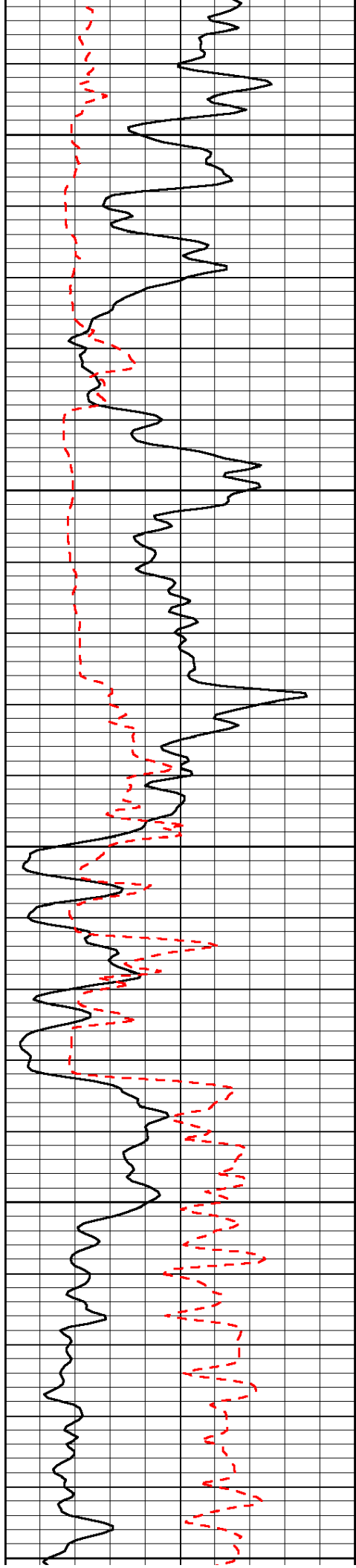


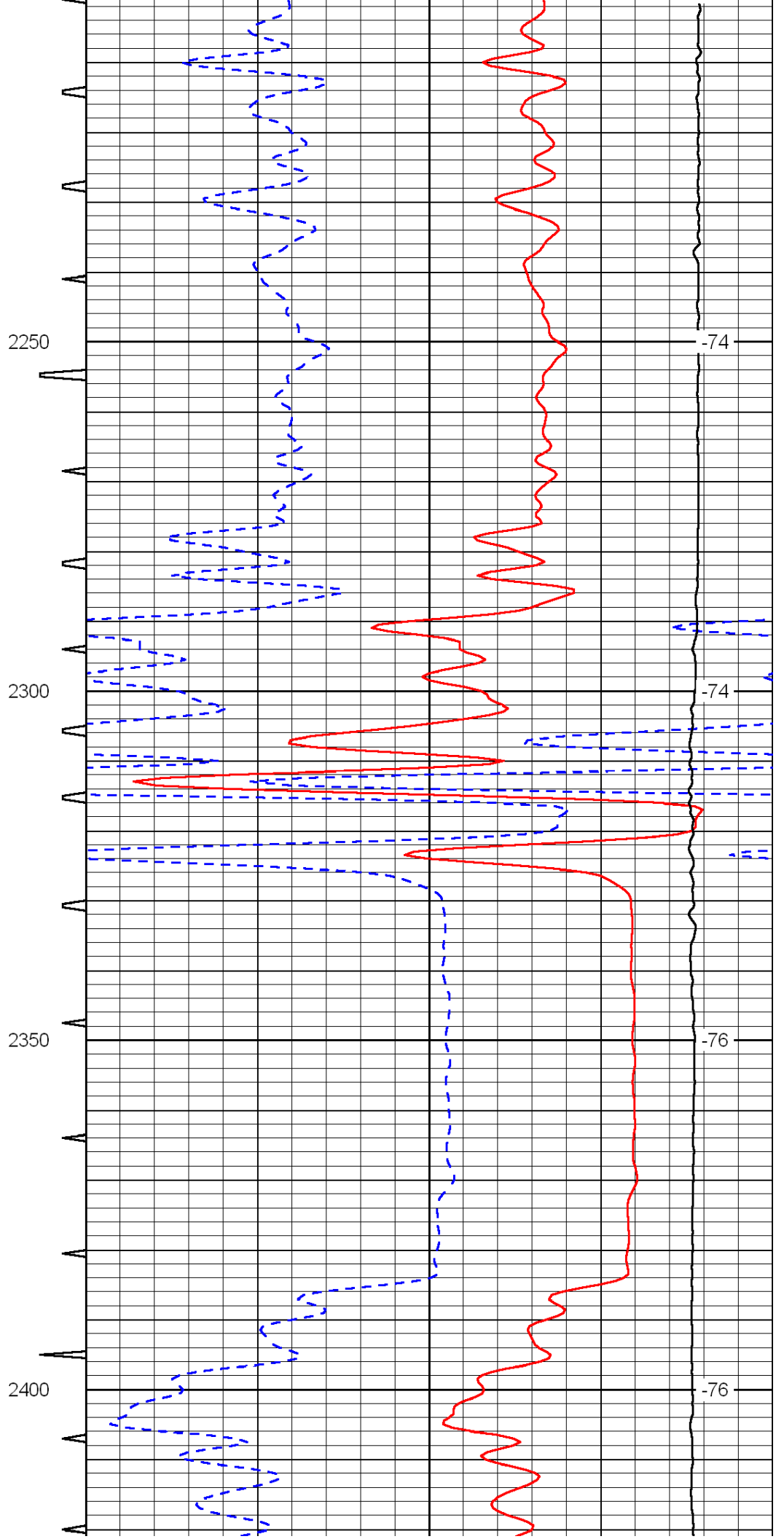
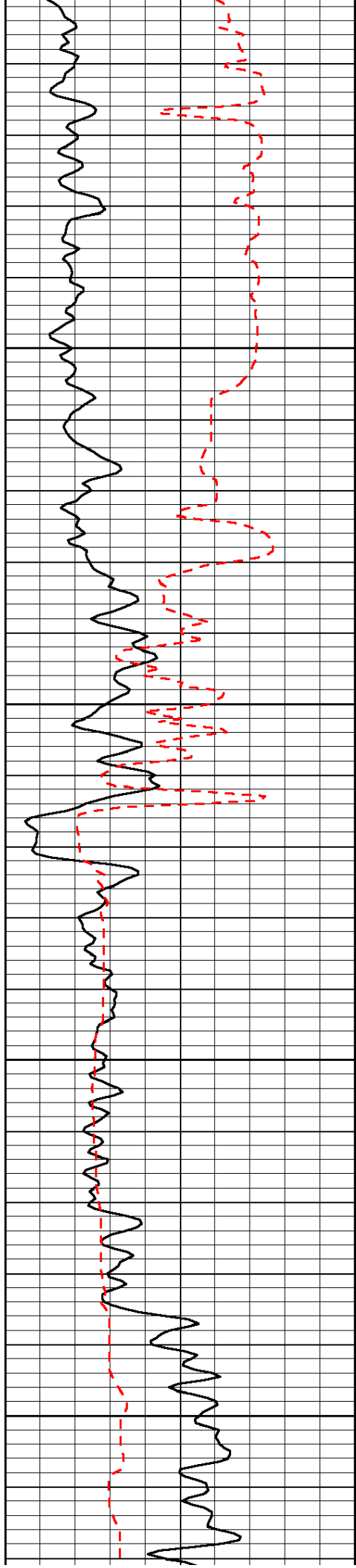


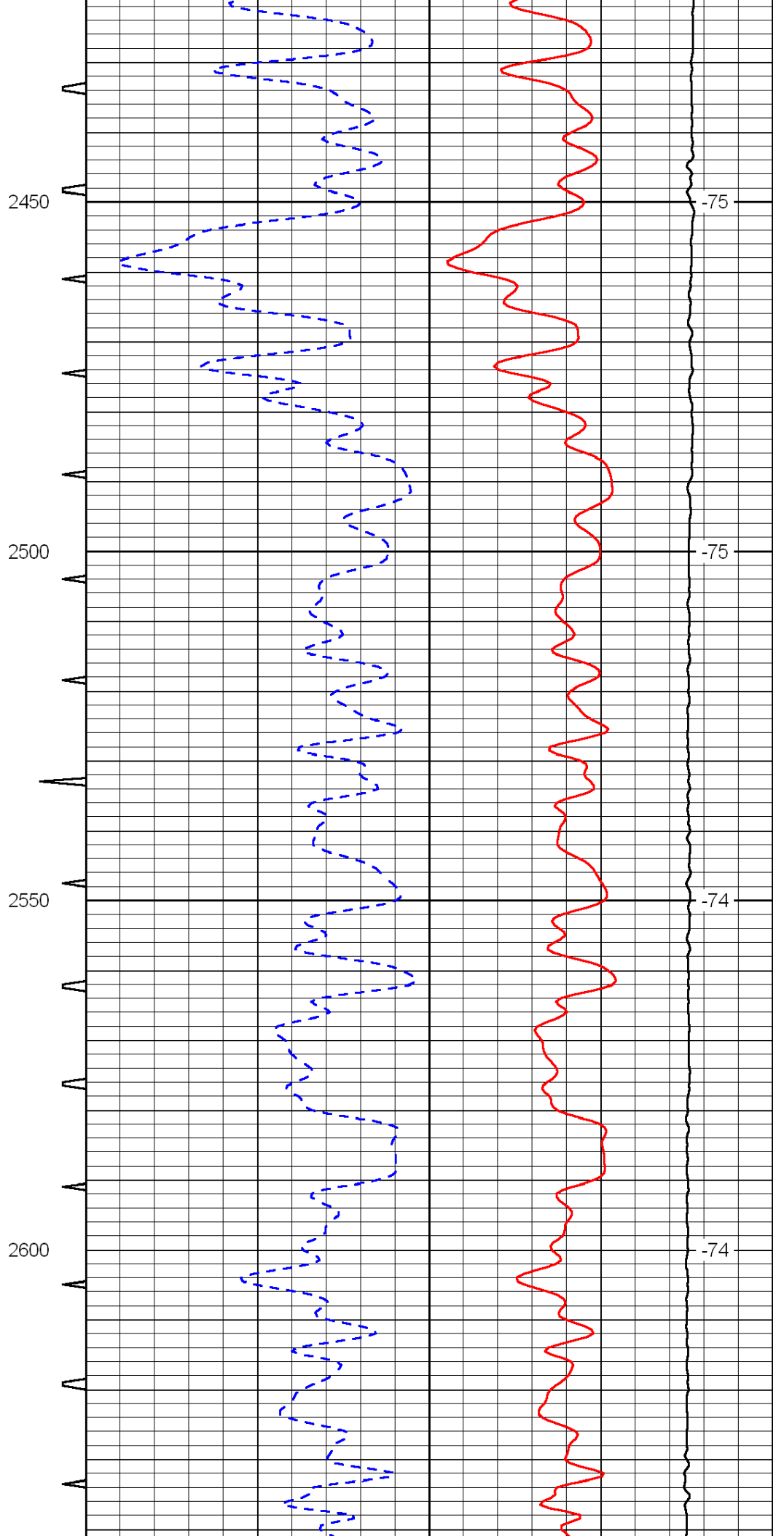
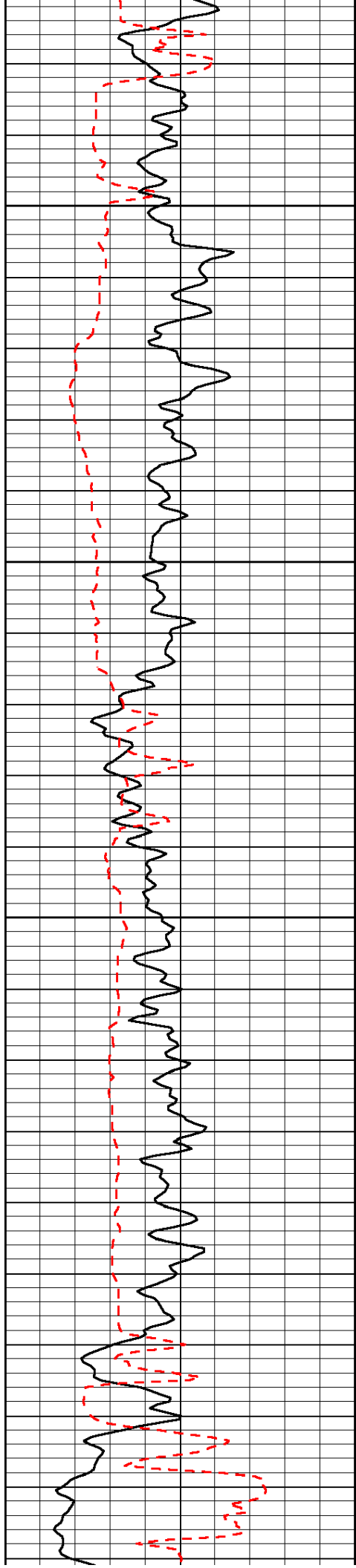


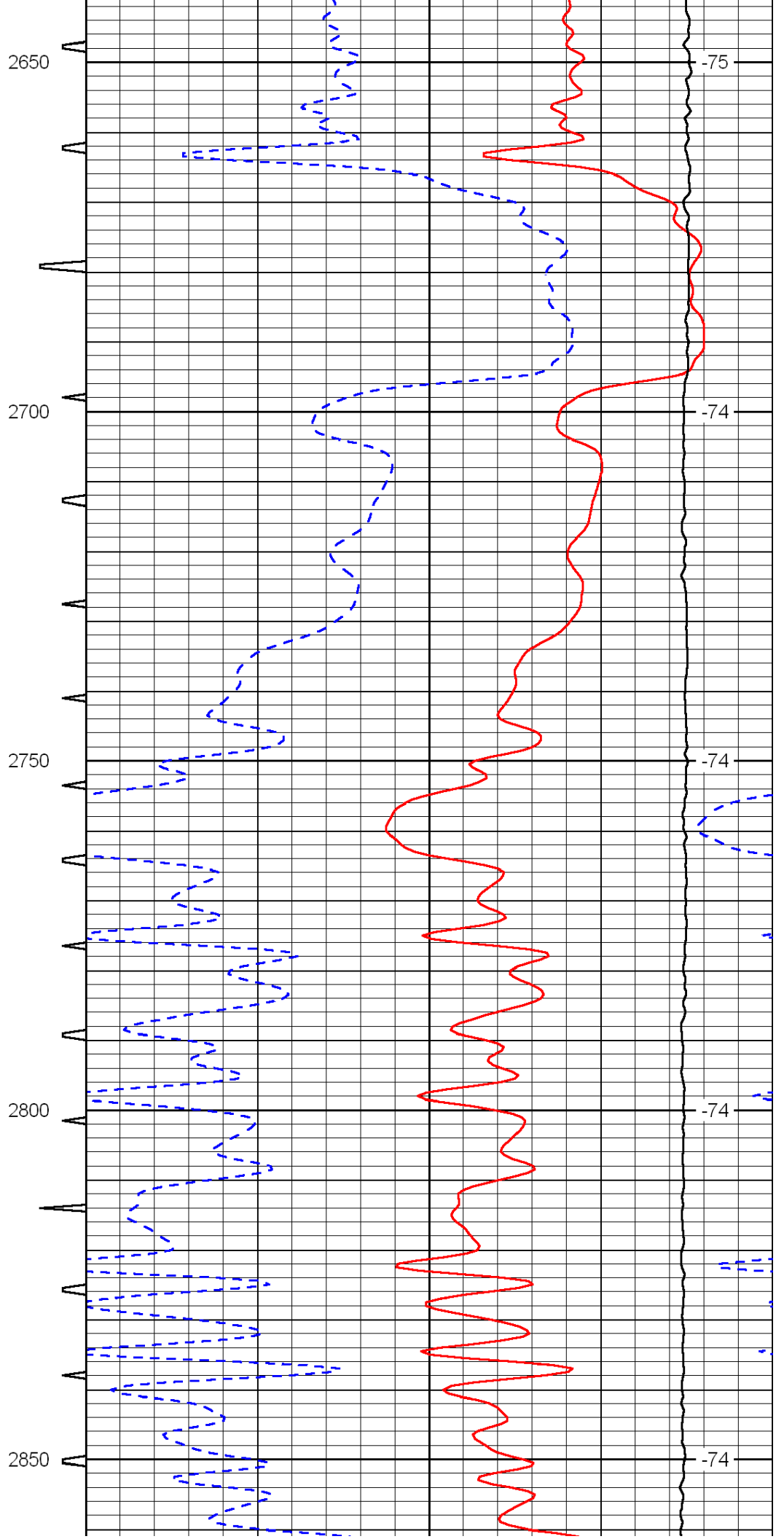
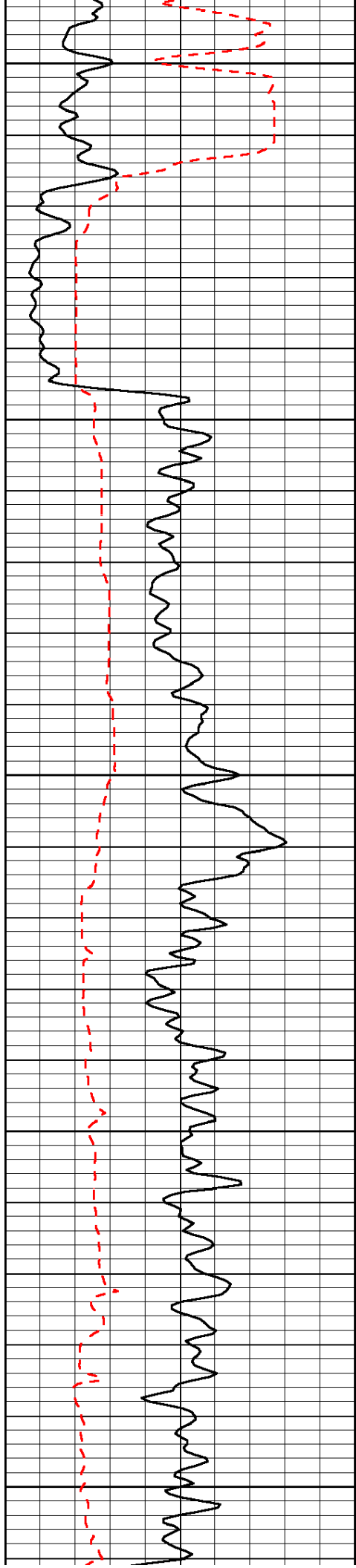


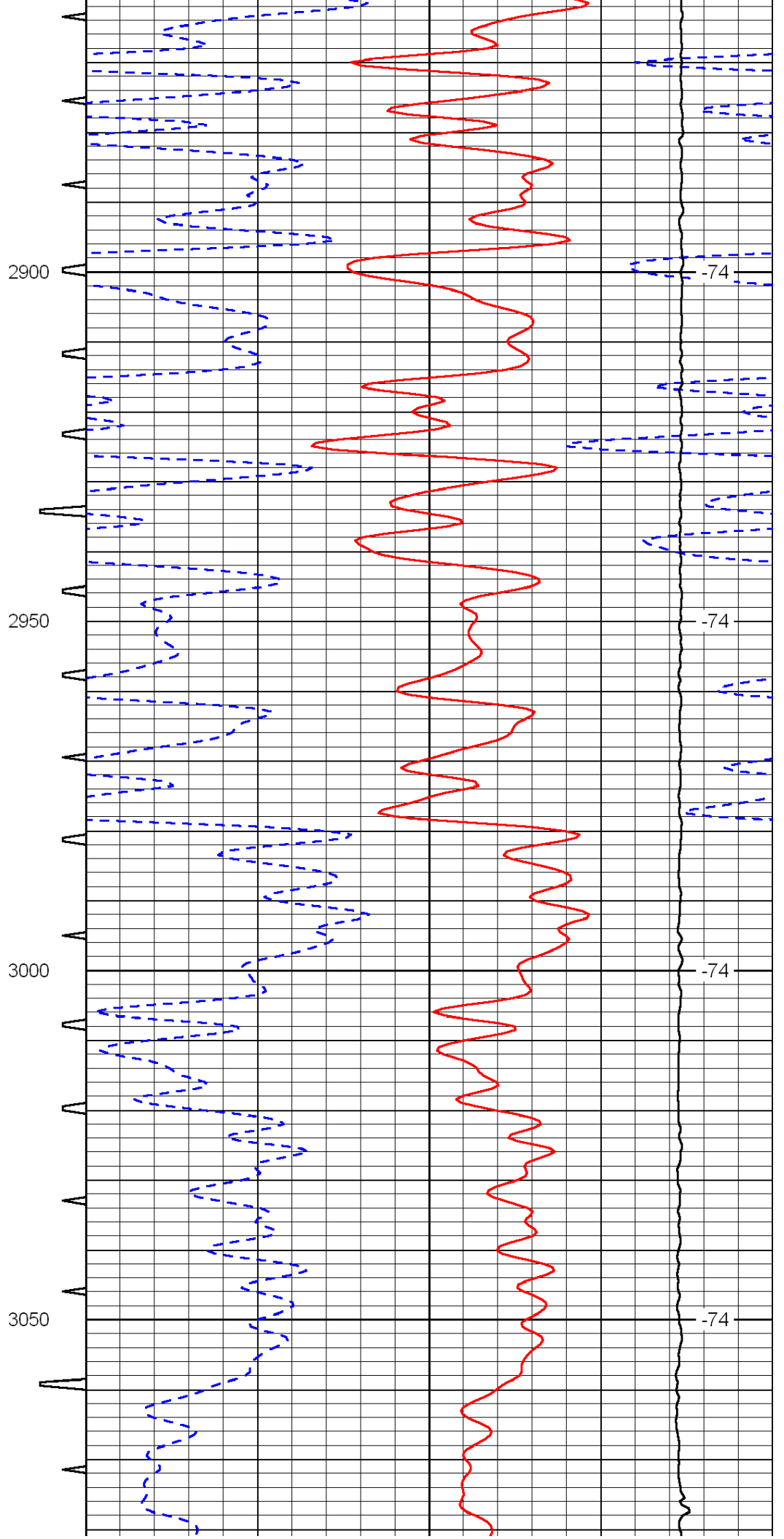
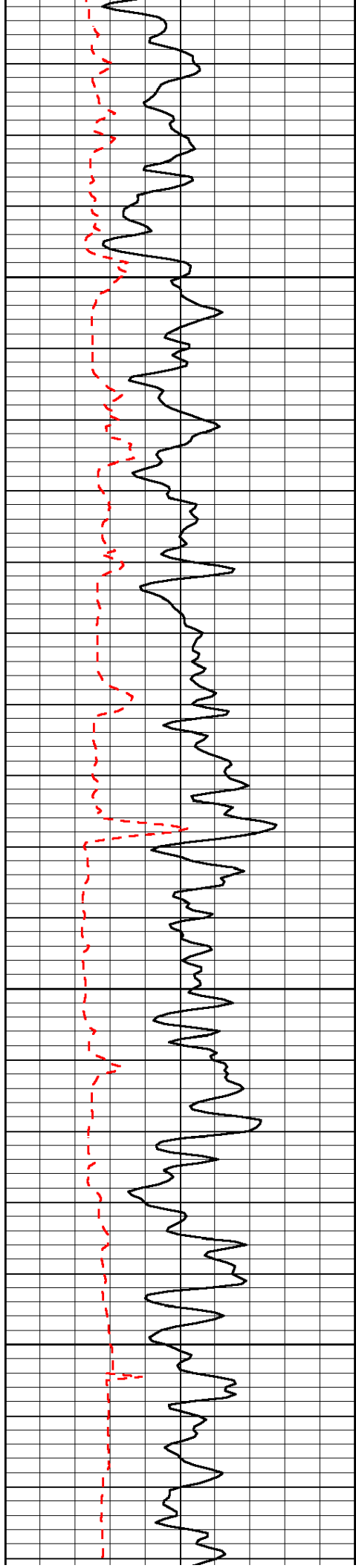


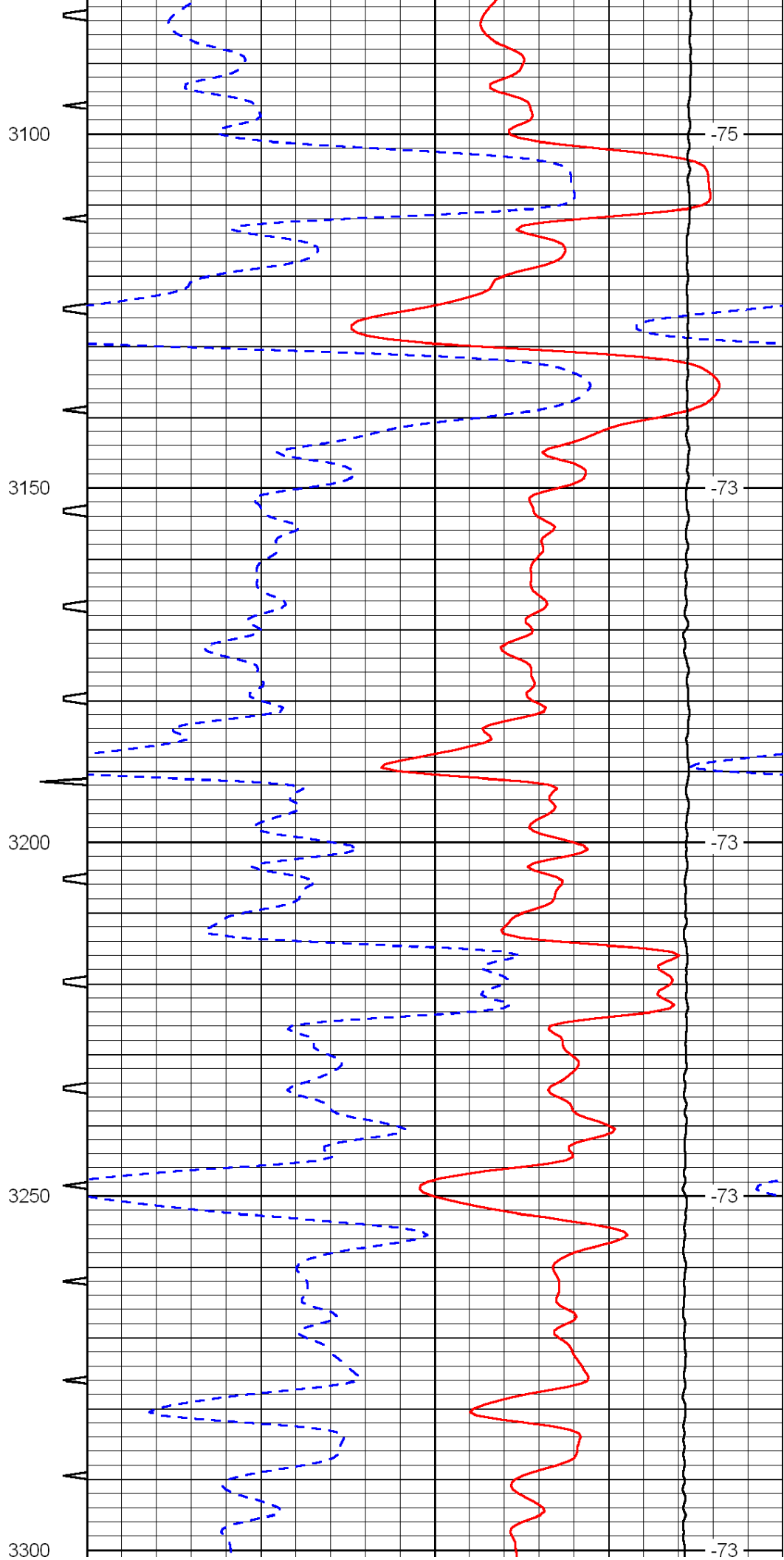
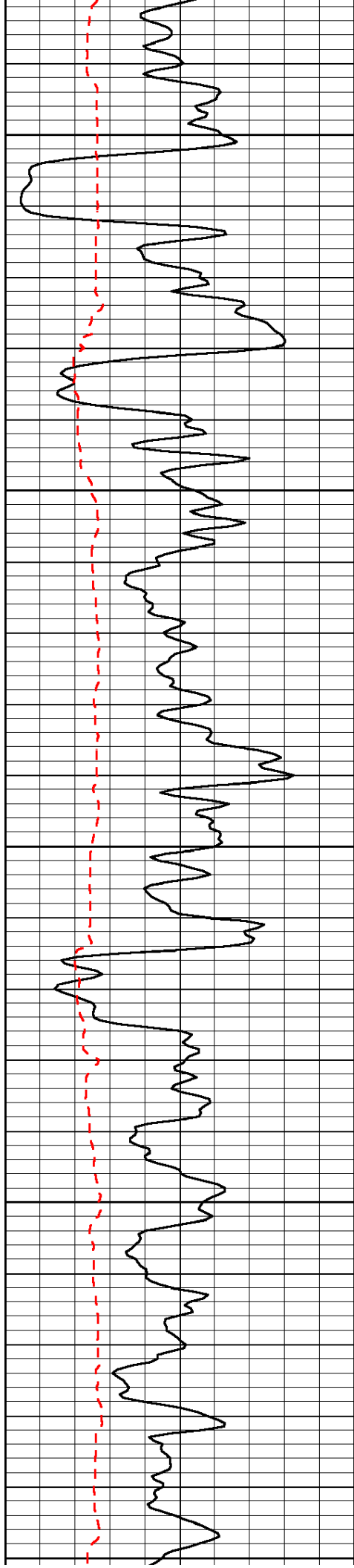


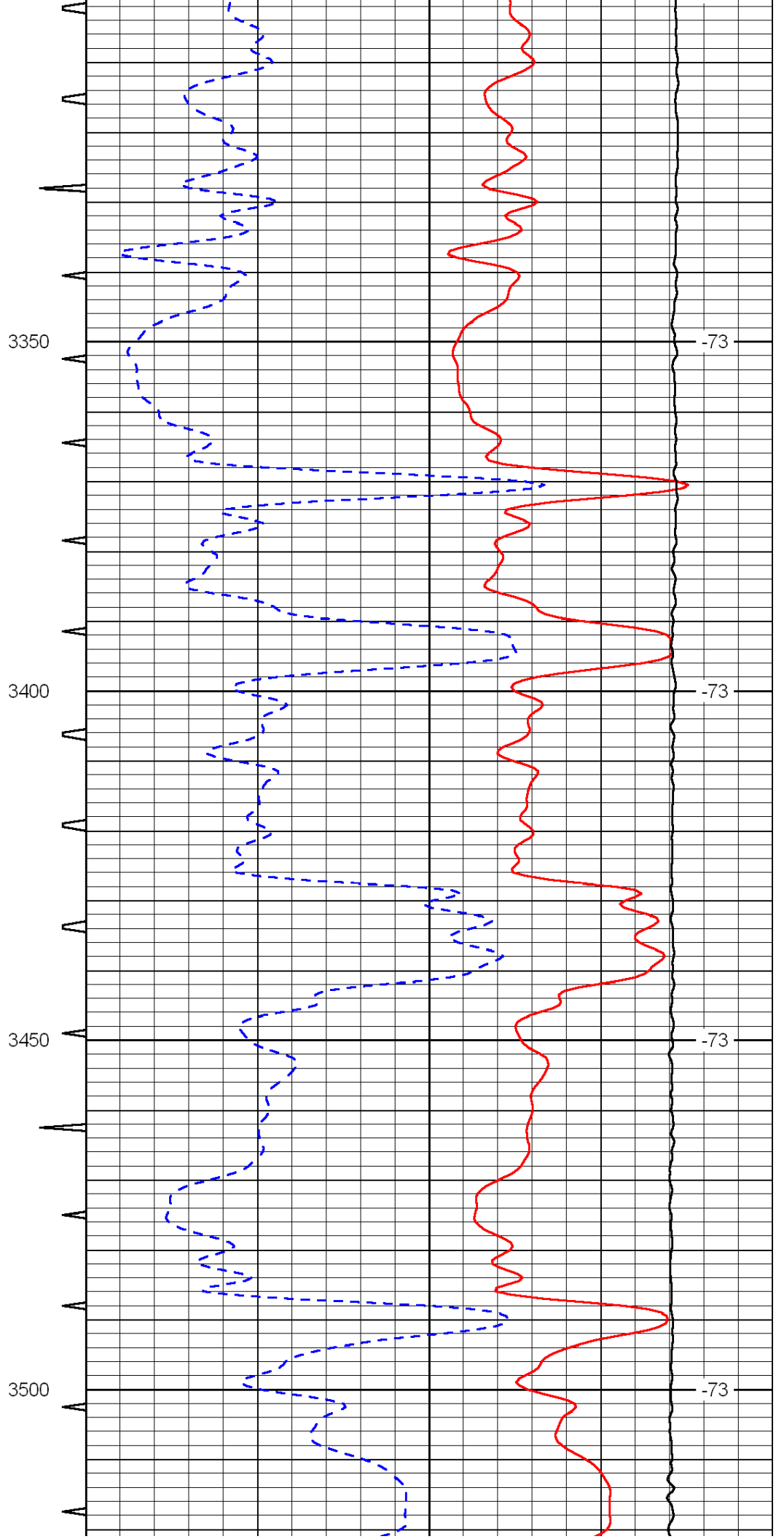
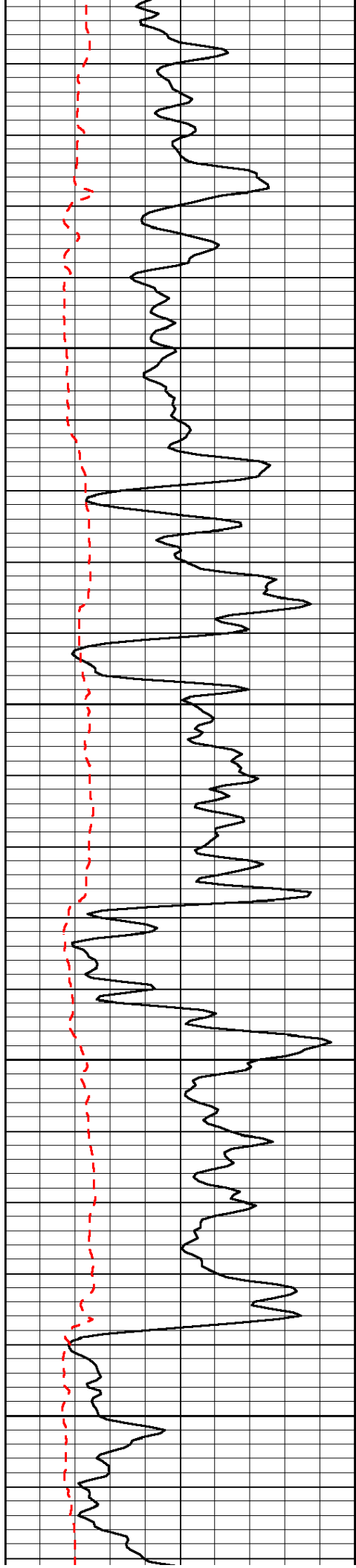


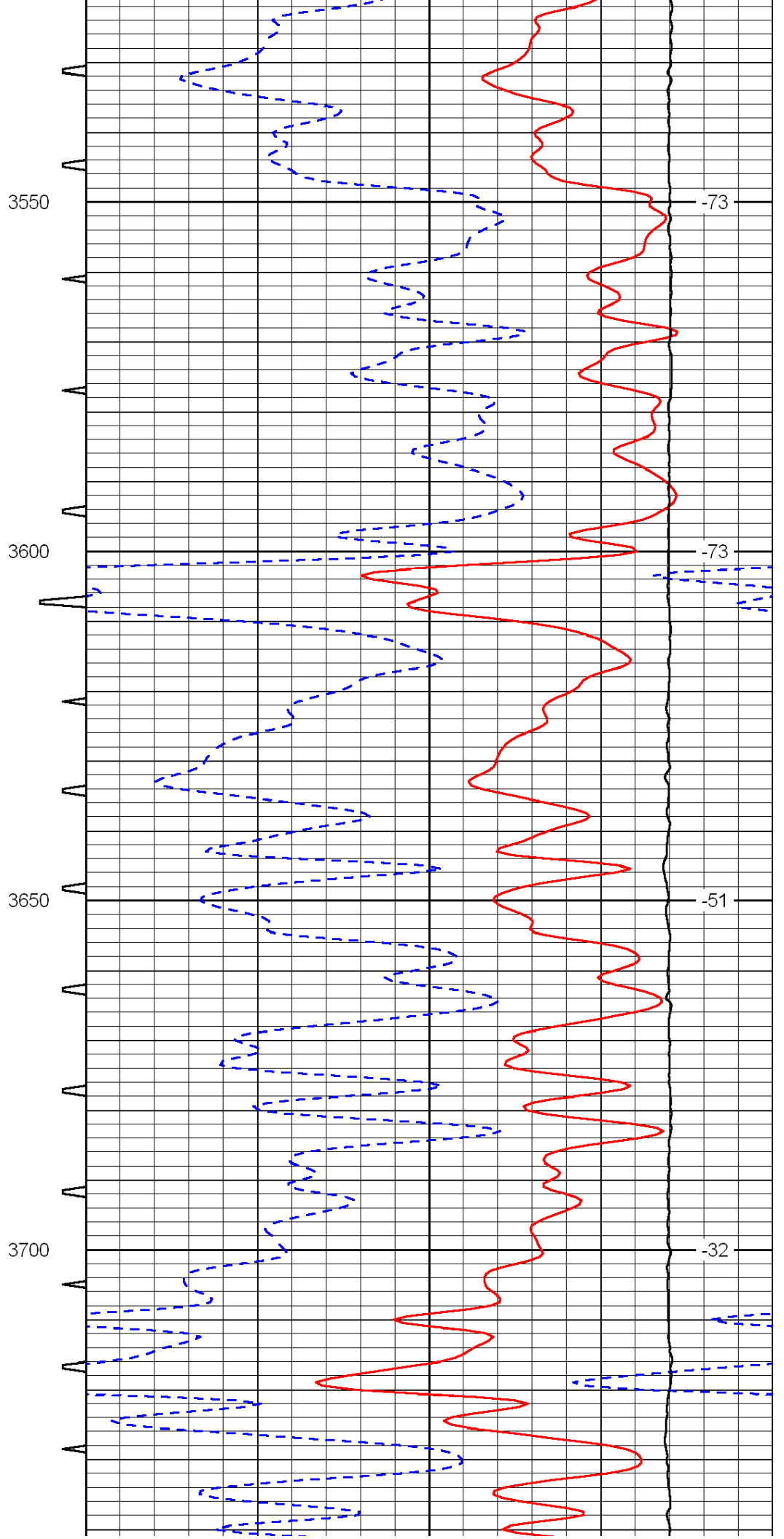
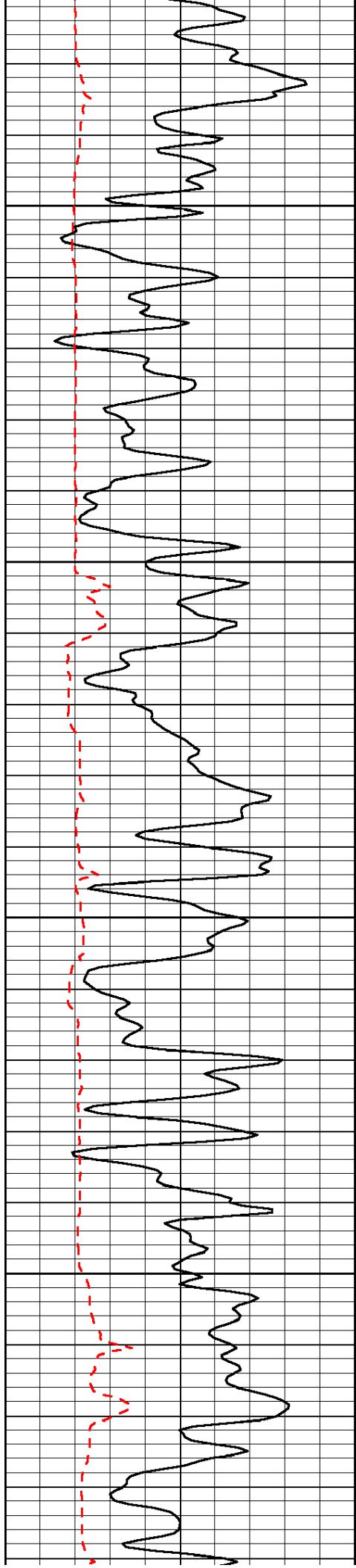


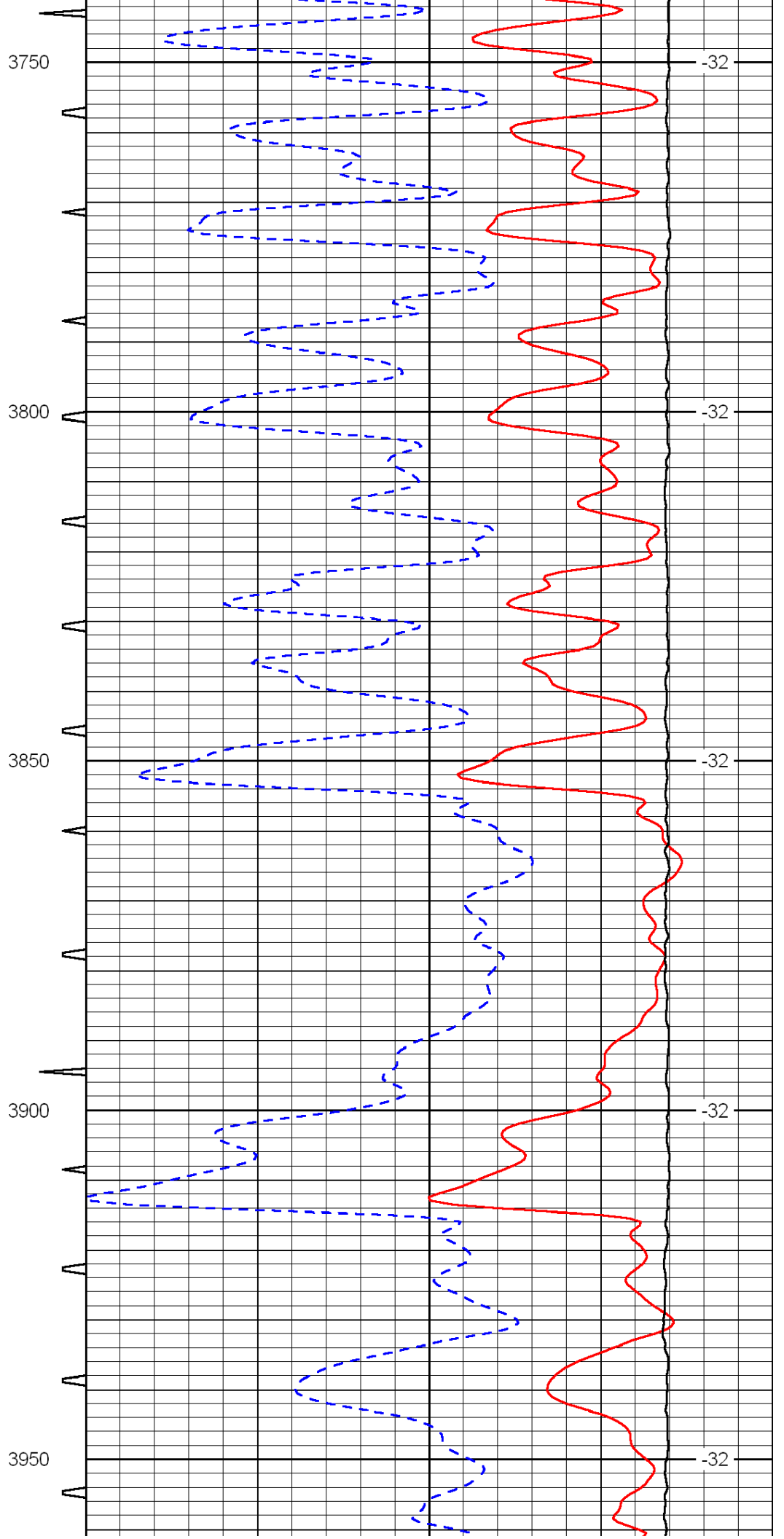
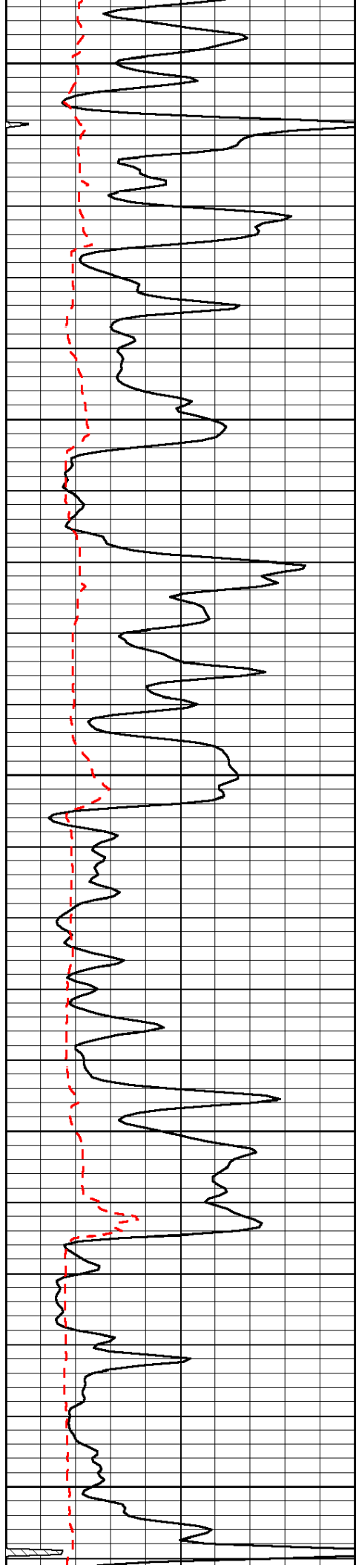


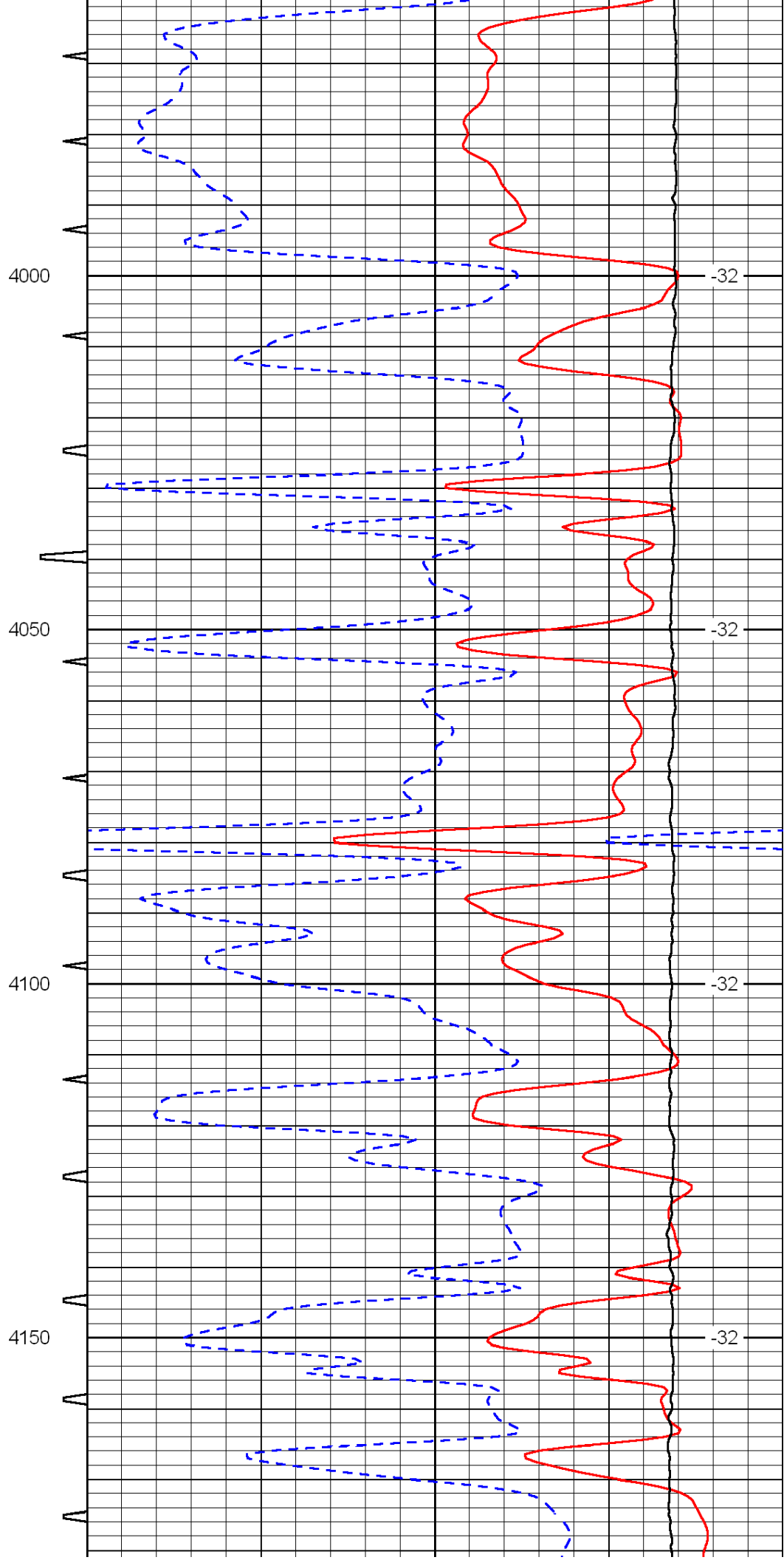
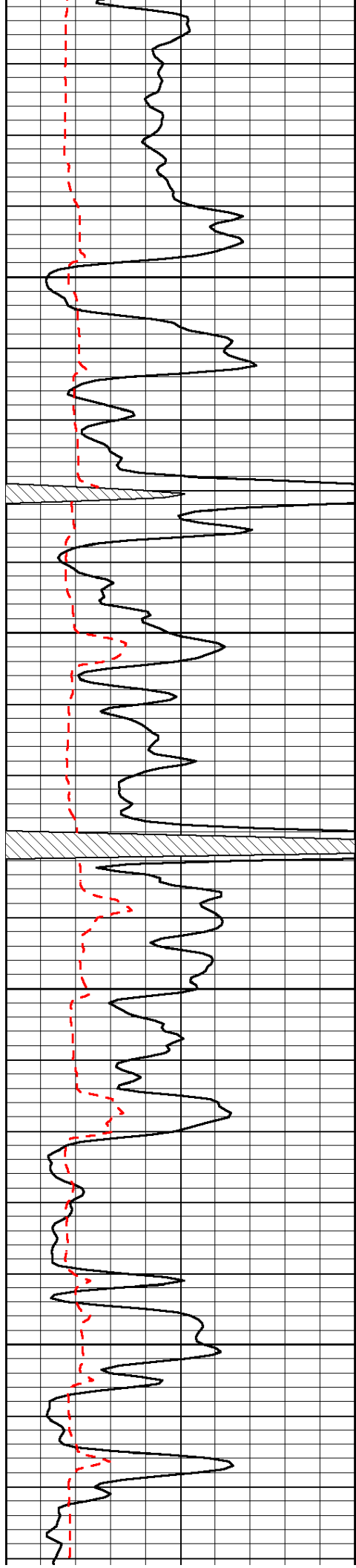


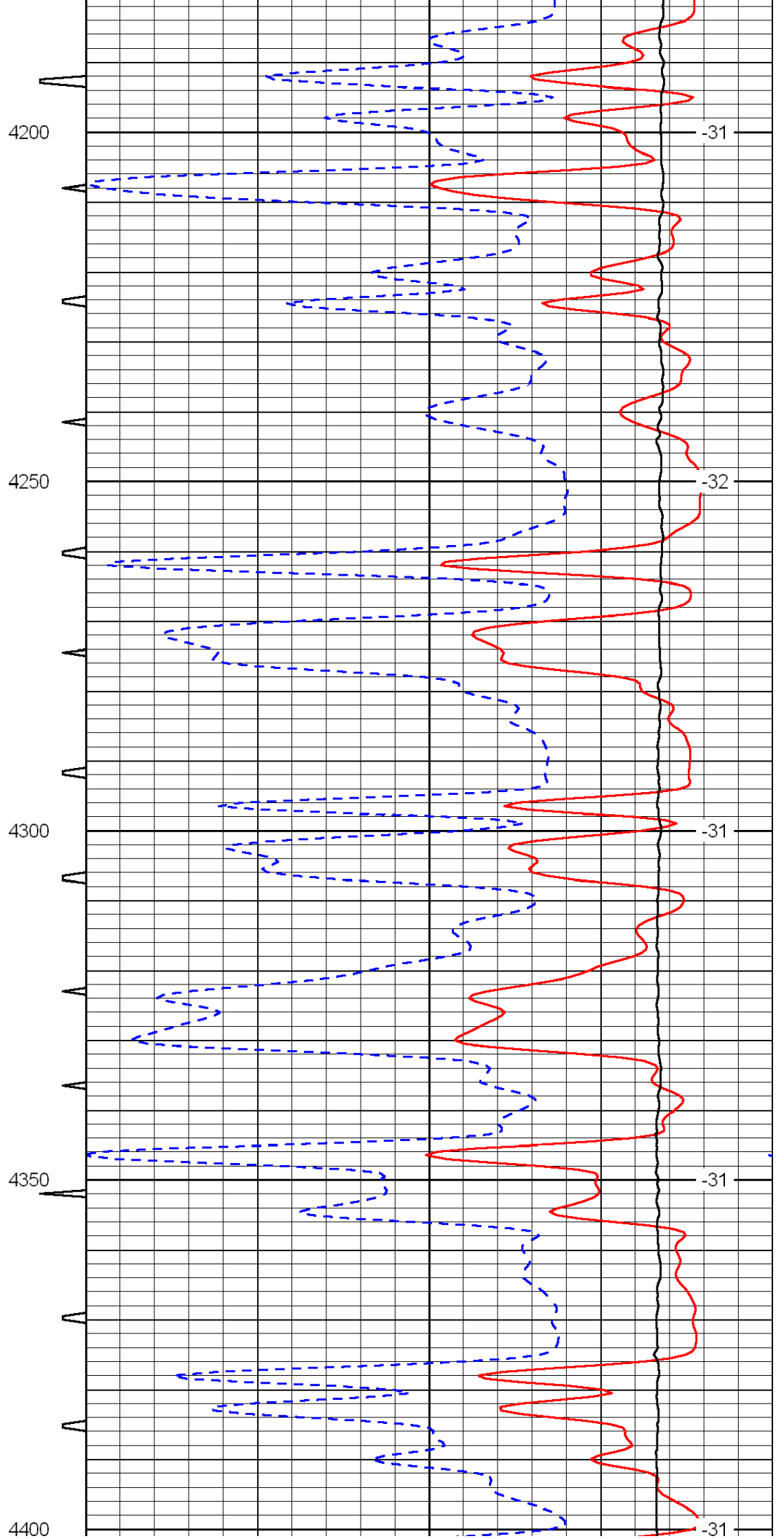
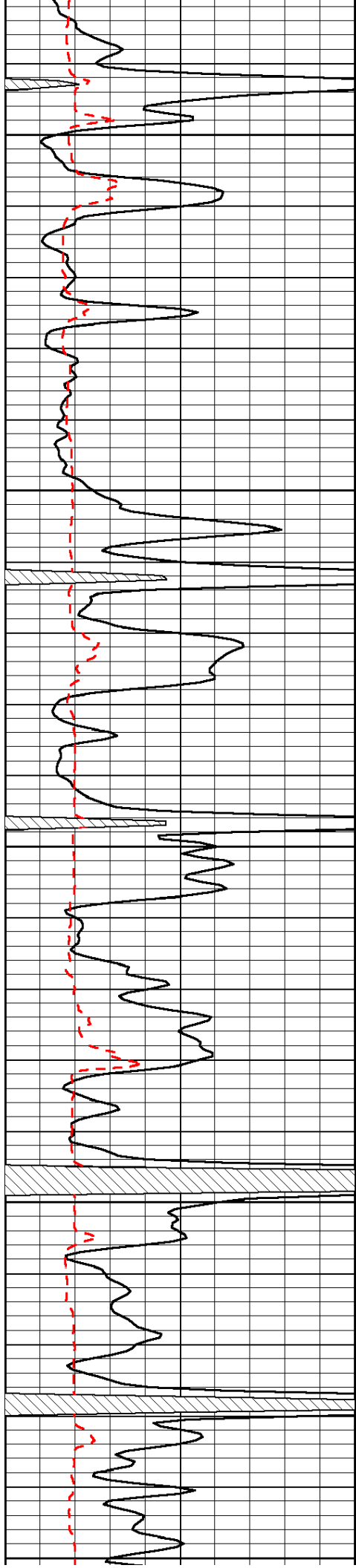


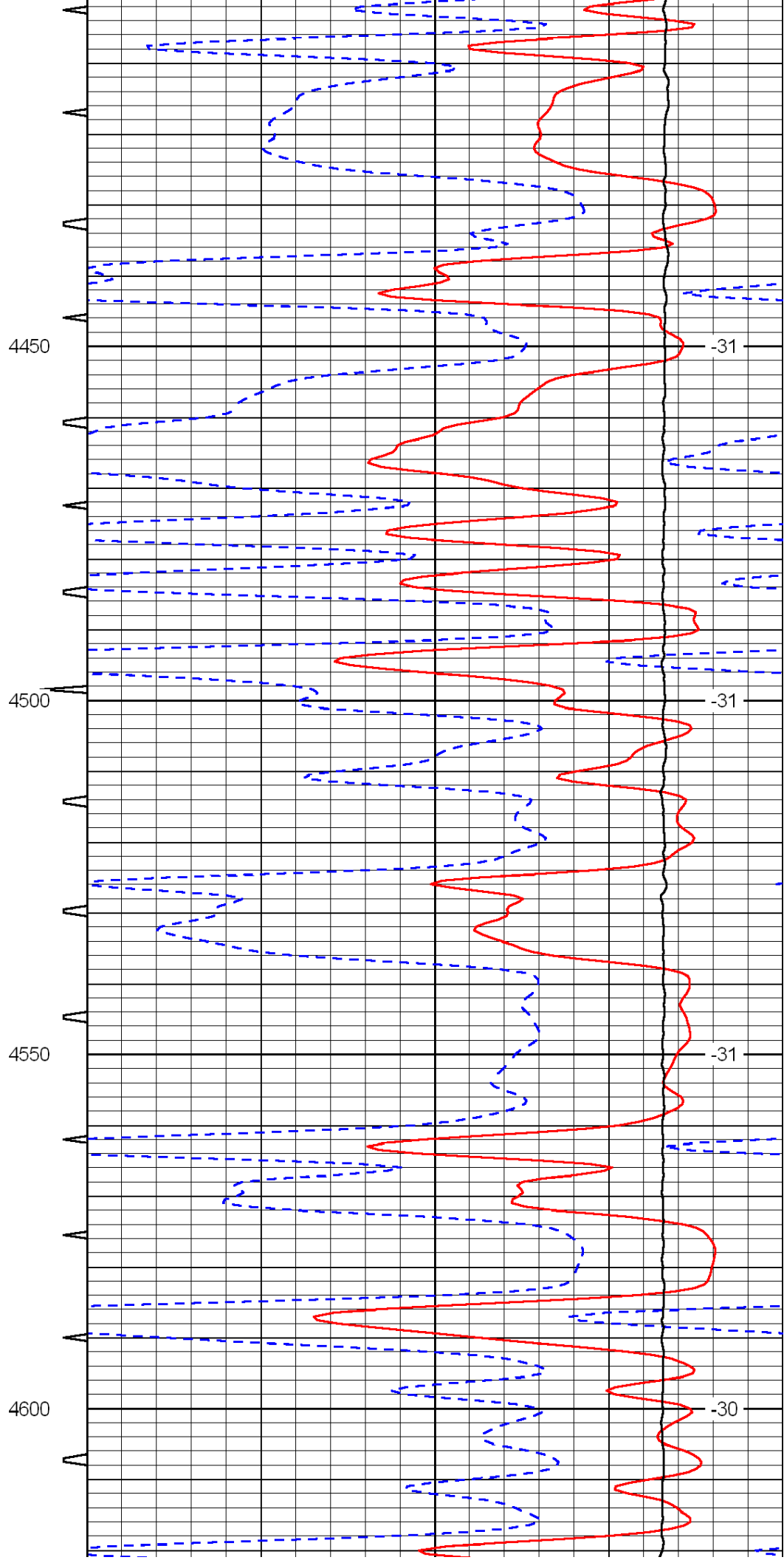
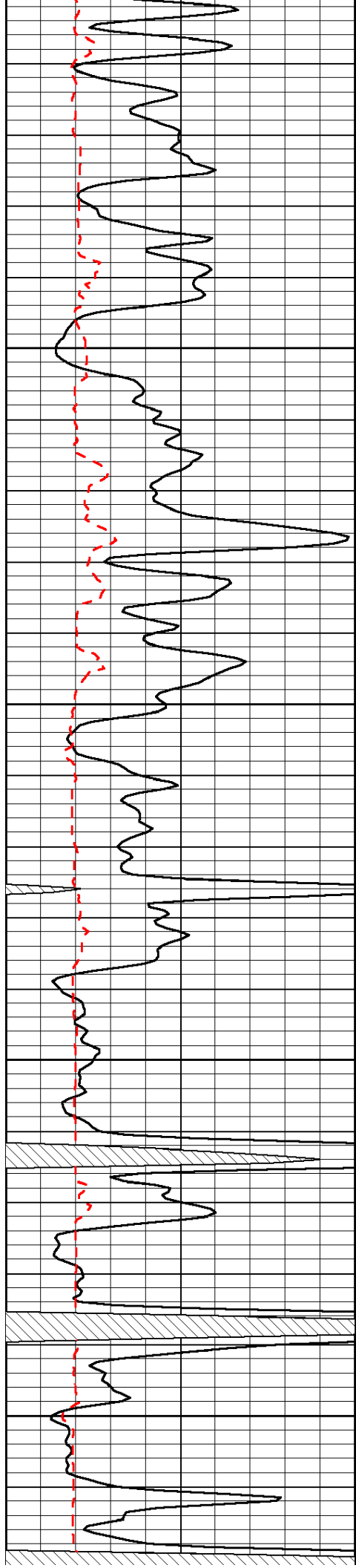


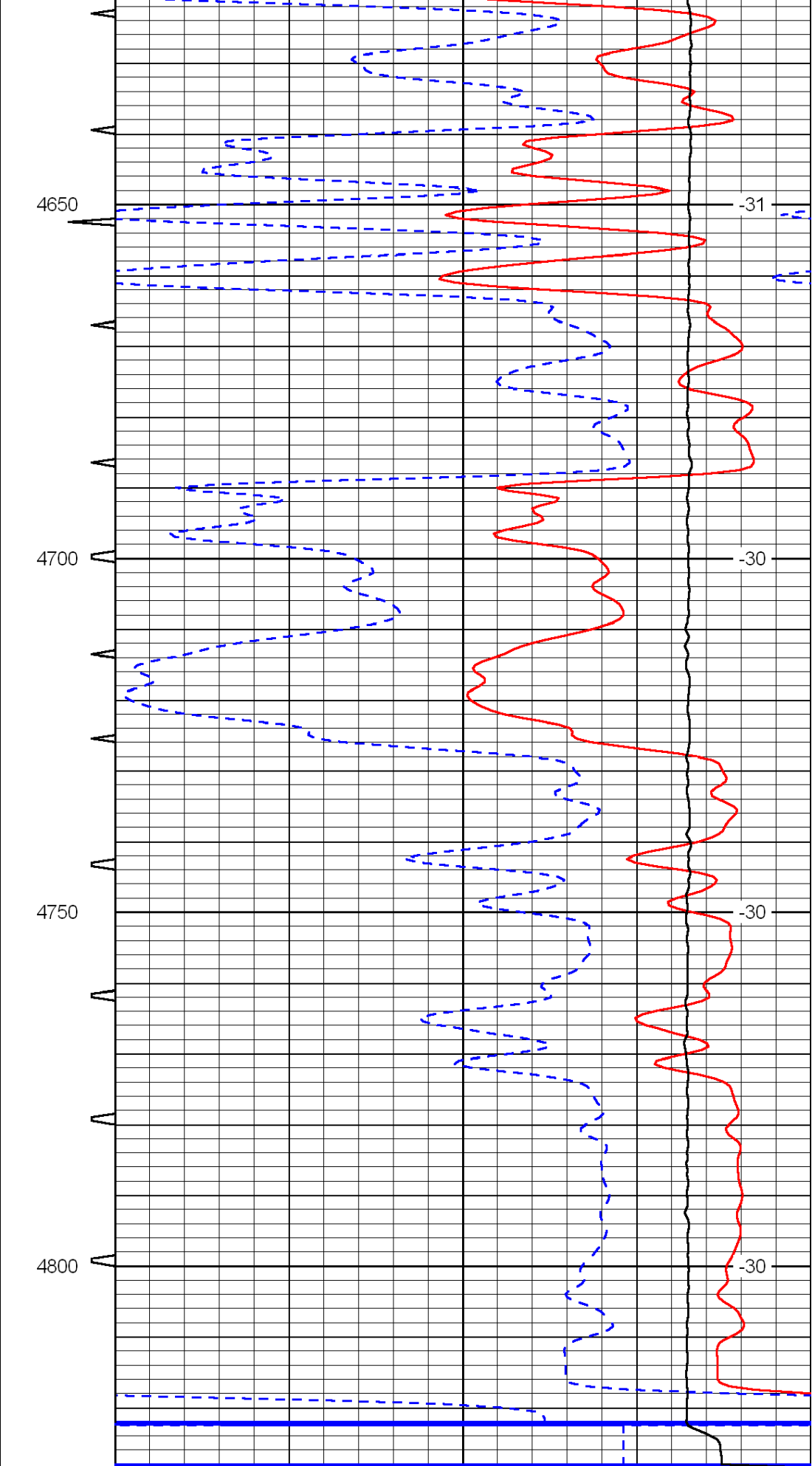
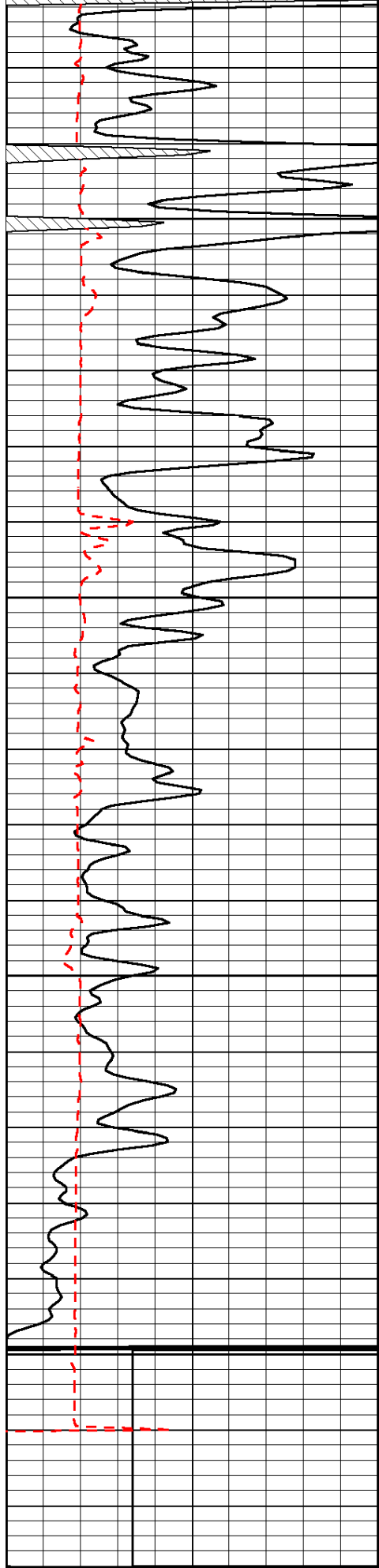












0	Gamma Ray	150	Sonic Int	140	Delta Time (usec/ft)	40
150	Gamma Ray	300	5	0	SPOR	-10
6	Caliper	16		15000	ITFN (lb)	0

