



DIGITAL LOG (785) 625-3858

Dual Induction Log

API No.	15-193-20,798-00-00		
Company	Chaco Energy Company		
Well	Wilgers No.2		
Field	Wildcat		
County	Thomas	State	Kansas
Location	620' FNL & 1915' FWL		
Sec: 33	Twp: 10S	Rge: 33W	
Permanent Datum	Ground Level	Elevation	3177
Log Measured From	Kelly Bushing	10 Ft. Above Perm. Datum	
Drilling Measured From	Kelly Bushing		
		Other Services	CNL/CDL MEL/BHCS
		Elevation	K.B. 3187 D.F. 3177 G.L. 3177

Date	6/13/2011	
Run Number	One	
Depth Driller	4825	
Depth Logger	4823	
Bottom Logged Interval	4822	
Top Log Interval	250	
Casing Driller	8.625 @ 270	
Casing Logger	265	
Bit Size	7.875	
Type Fluid in Hole	Chemical	
Salinity, ppm CL	4.700	
Density / Viscosity	9.2	57
pH / Fluid Loss	10.0	8.0
Source of Sample	Flowline	
Rm @ Meas. Temp	.6	@ 77
Rmf @ Meas. Temp	.45	@ 77
Rmc @ Meas. Temp	.81	@ 77
Source of Rmf / Rmc	Charts	
Rm @ BHT	.37	@ 126
Operating Rig Time	4 1/2 Hours	
Max Rec. Temp. F	126	
Equipment Number	17	
Location	Hays	
Recorded By	C. Desaire	
Witnessed By	Austin Garner	

<<< Fold Here >>>

All interpretations are opinions based on inferences from electrical or other measurements and we cannot and do not guarantee the accuracy or correctness of any interpretation, and we shall not, except in the case of gross or willful negligence on our part, be liable or responsible for any loss, costs, damages, or expenses incurred or sustained by anyone resulting from any interpretation made by any of our officers, agents or employees. These interpretations are also subject to our general terms and conditions set out in our current Price Schedule.

Comments

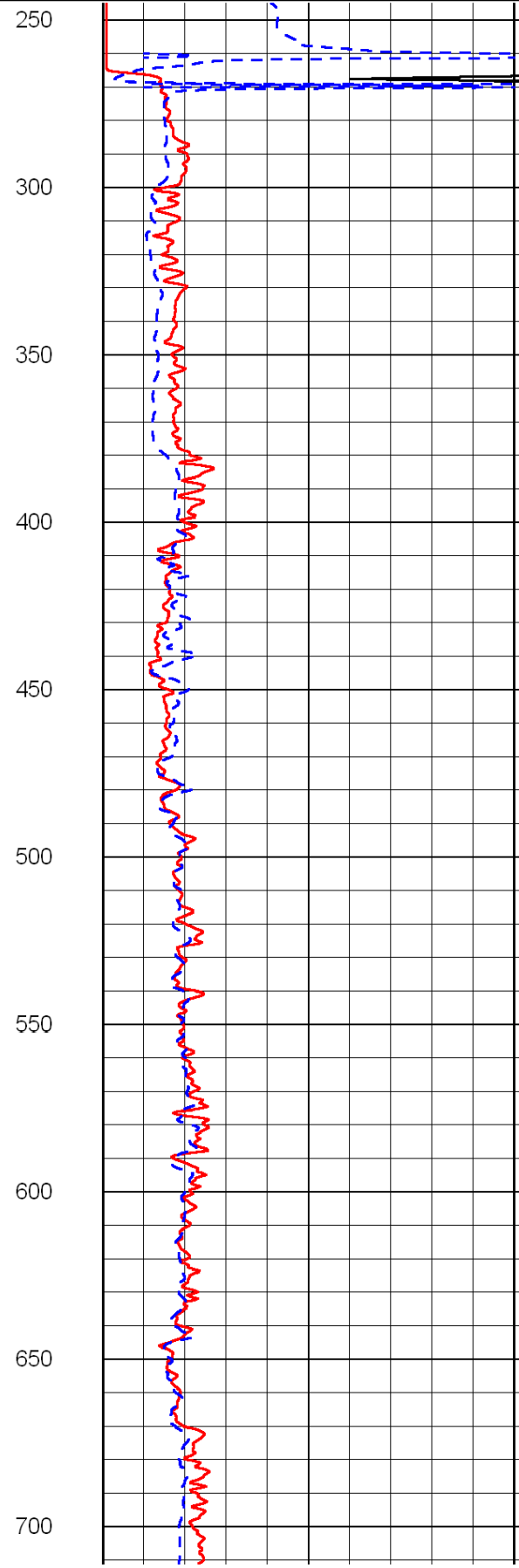
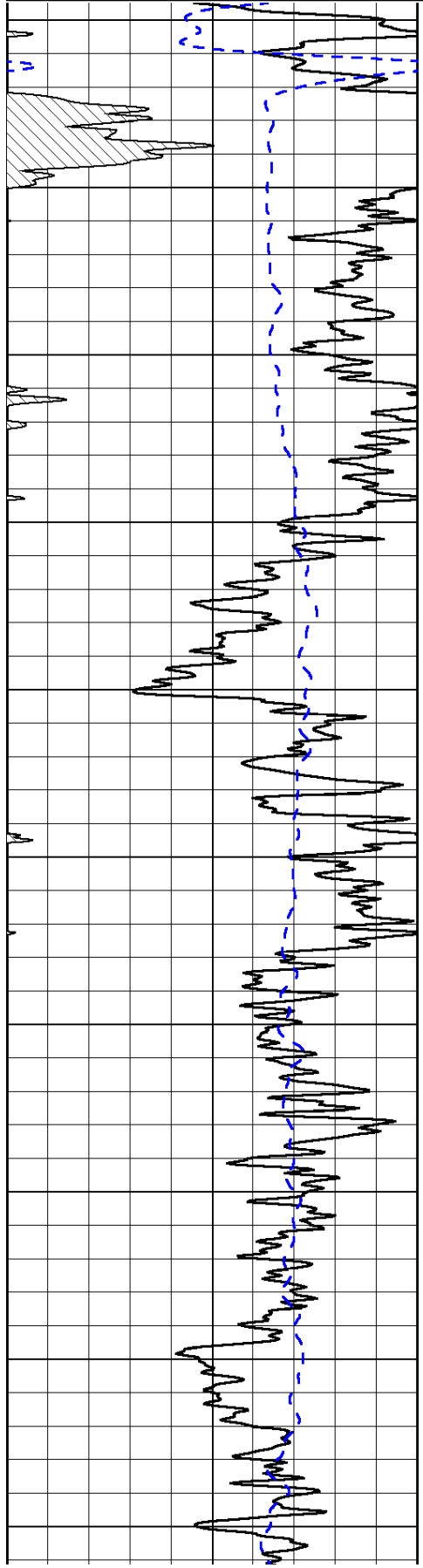
Thank you for using Log-Tech, Inc.  
 (785) 625-3858  
 Monument, W Edge,  
 2 N on 350th Rd to T,  
 1/4 W, 1 N, E Into

Database File: c:\warrior\data\chaco energy\_wilgers no.2\chaco hd.db  
 Dataset Pathname: dil/chcostk  
 Presentation Format: dil2in  
 Dataset Creation: Tue Jun 14 01:59:30 2011  
 Charted by: Depth in Feet scaled 1:600

0	Gamma Ray	150
-200	SP (mV)	0

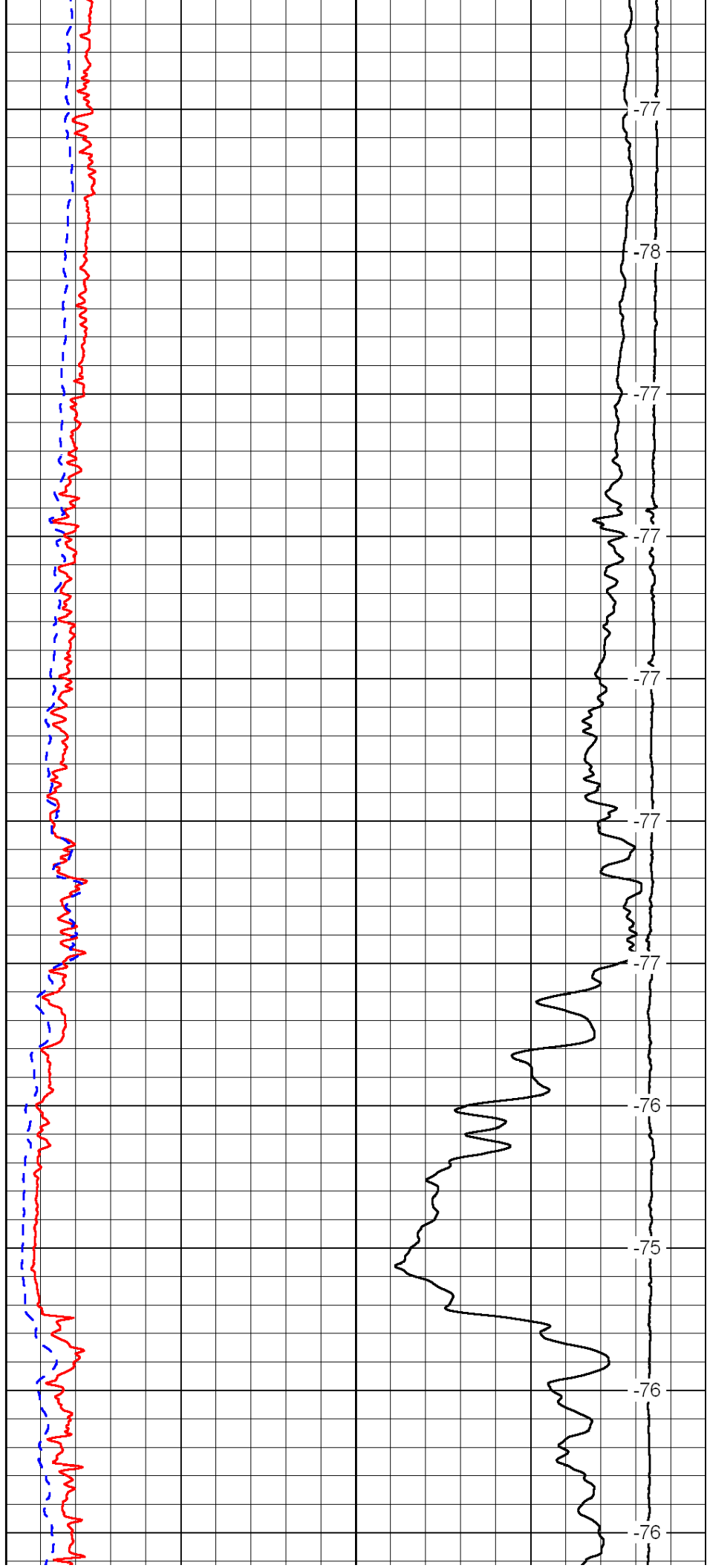
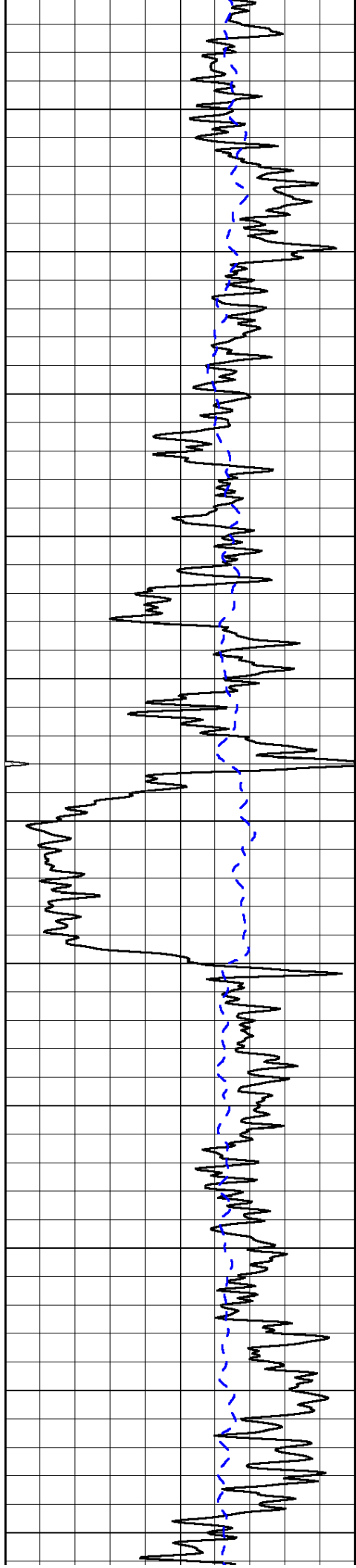
0	Shallow Resistivity	50
0	Deep Resistivity	50
1000	Conductivity	0
15000	Line Tension	0
50	Shallow Resistivity	500
50	Deep Resistivity	500

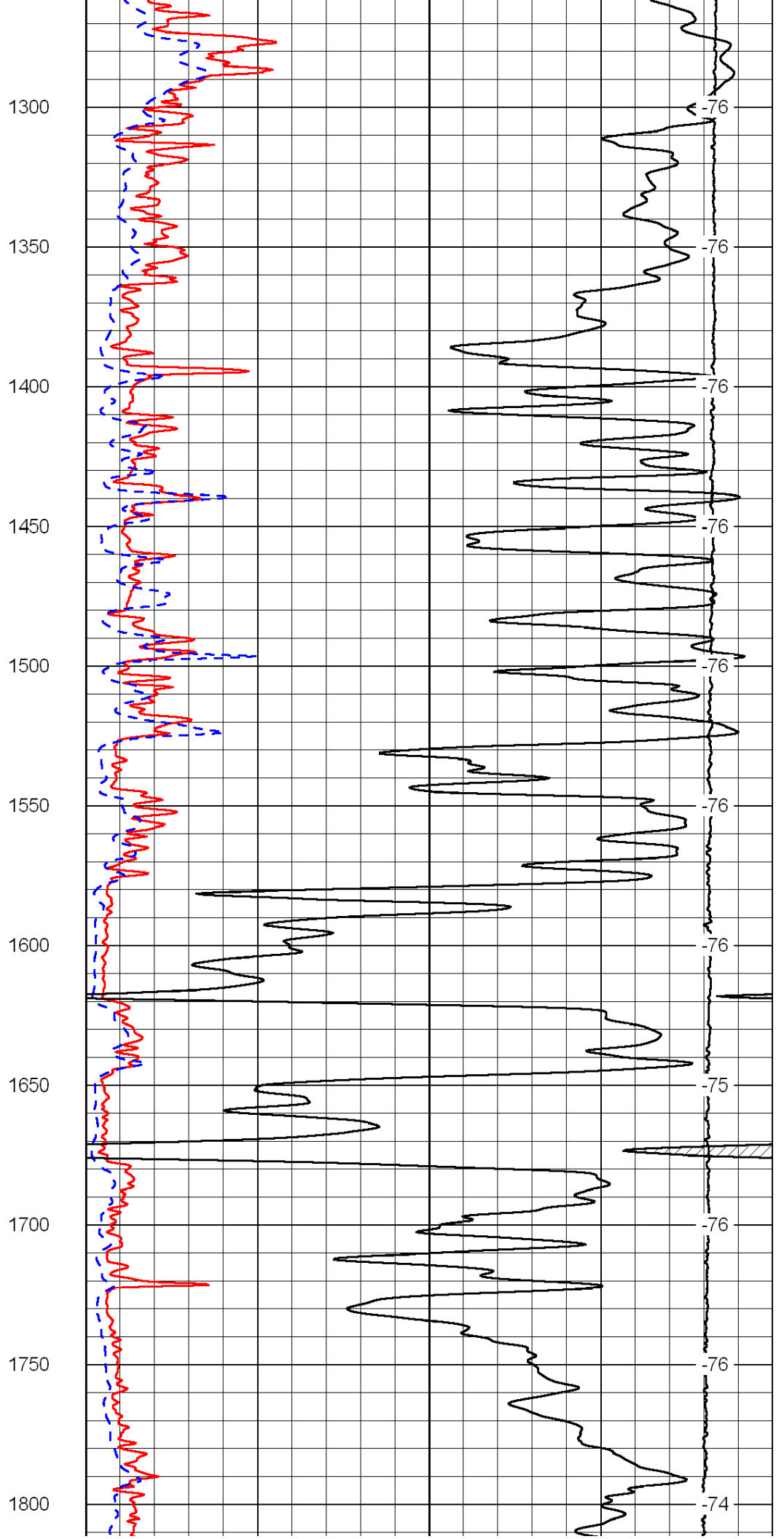
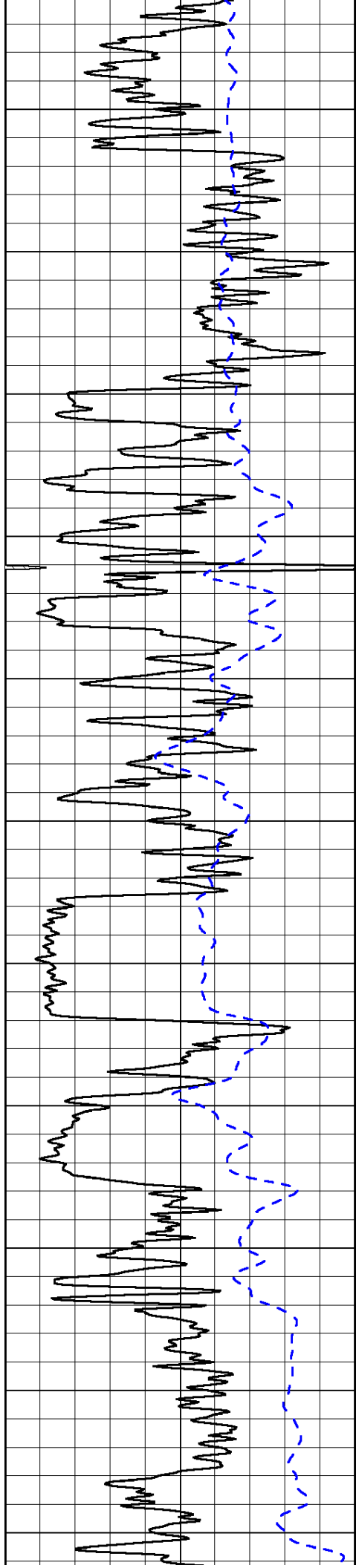
LSPD

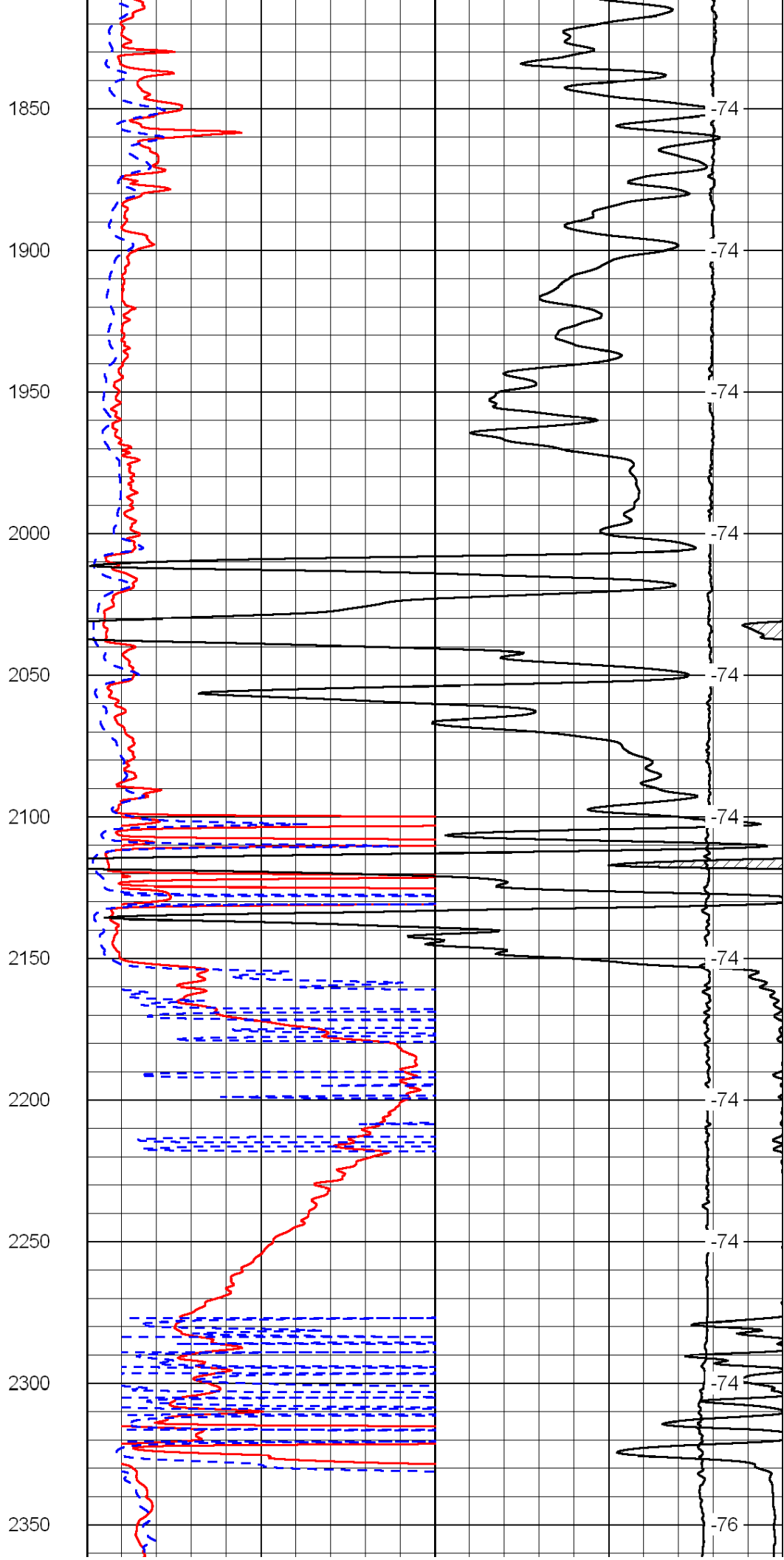
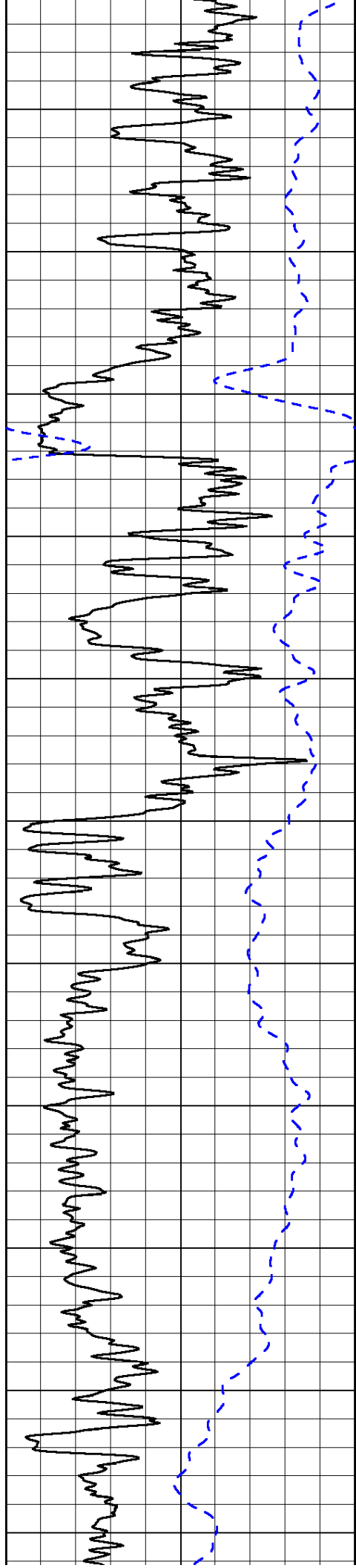


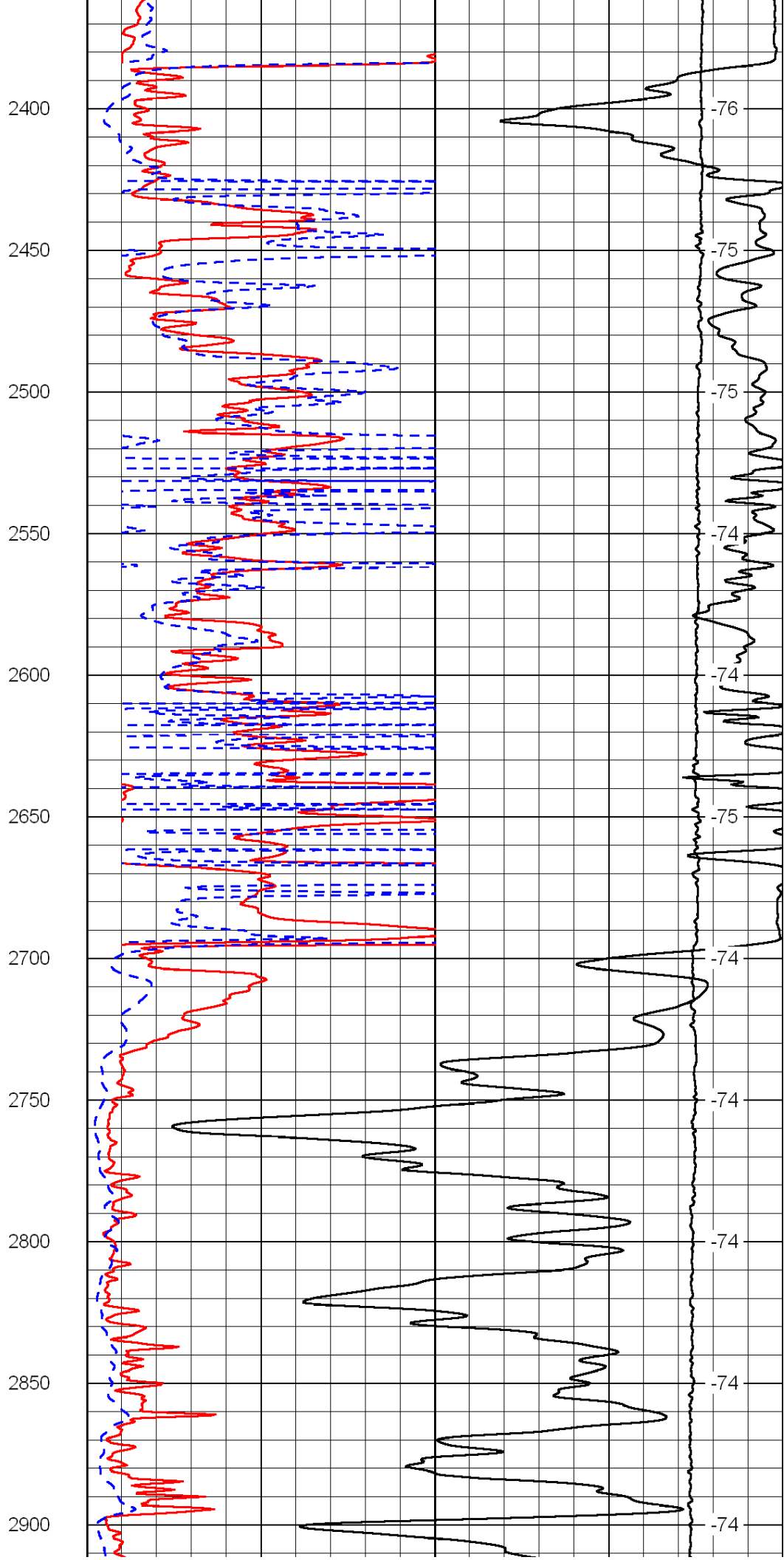
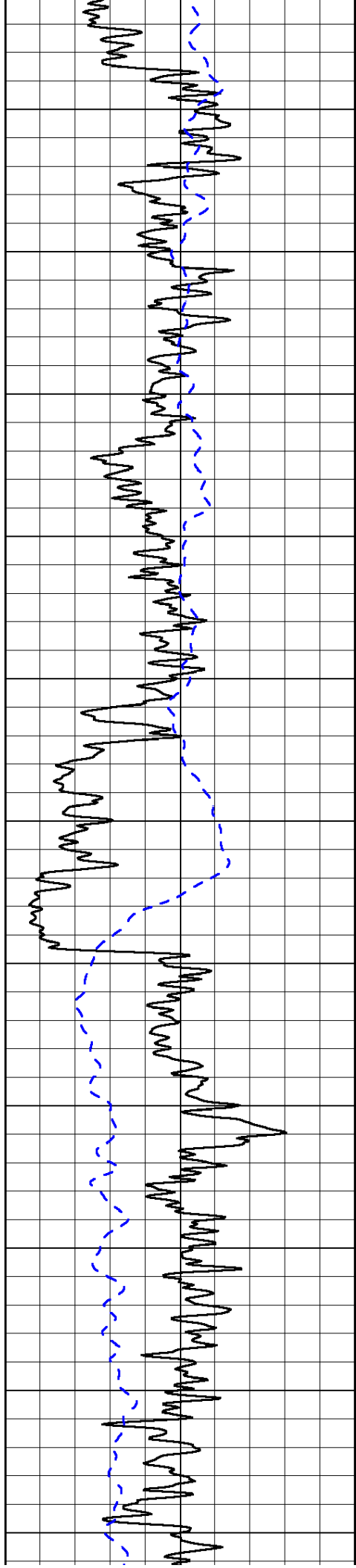
250  
300  
350  
400  
450  
500  
550  
600  
650  
700

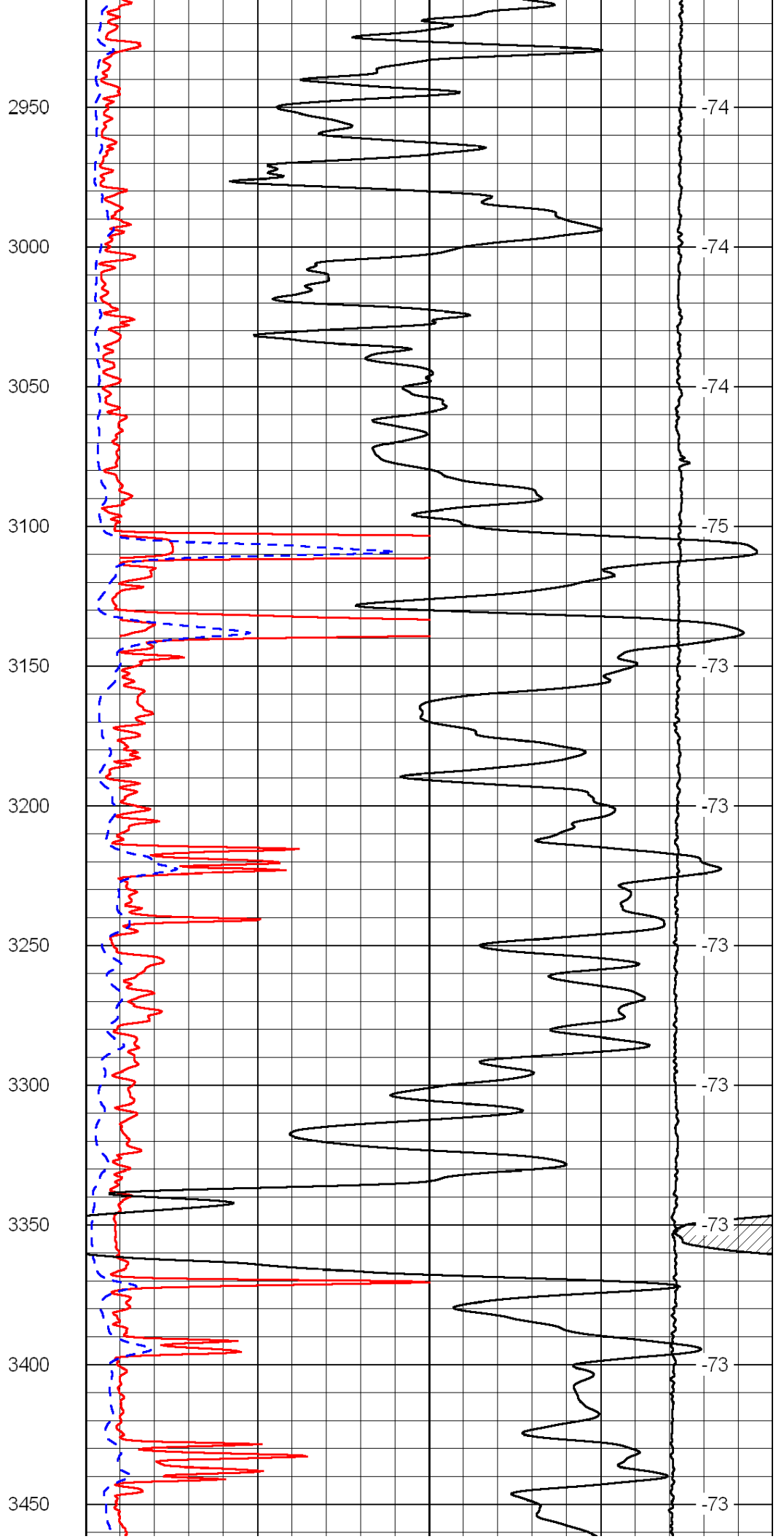
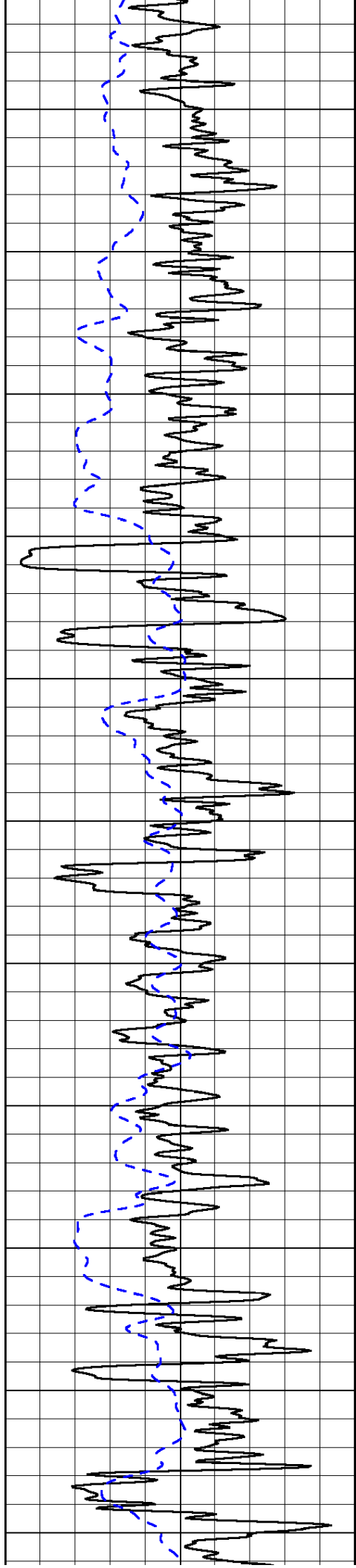
-36  
-37  
-70  
-76  
-77  
-77  
-77  
-77  
-77  
-77



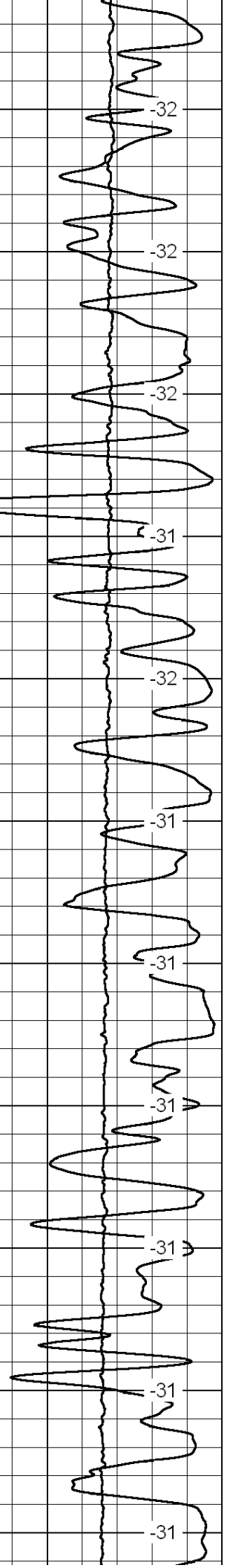
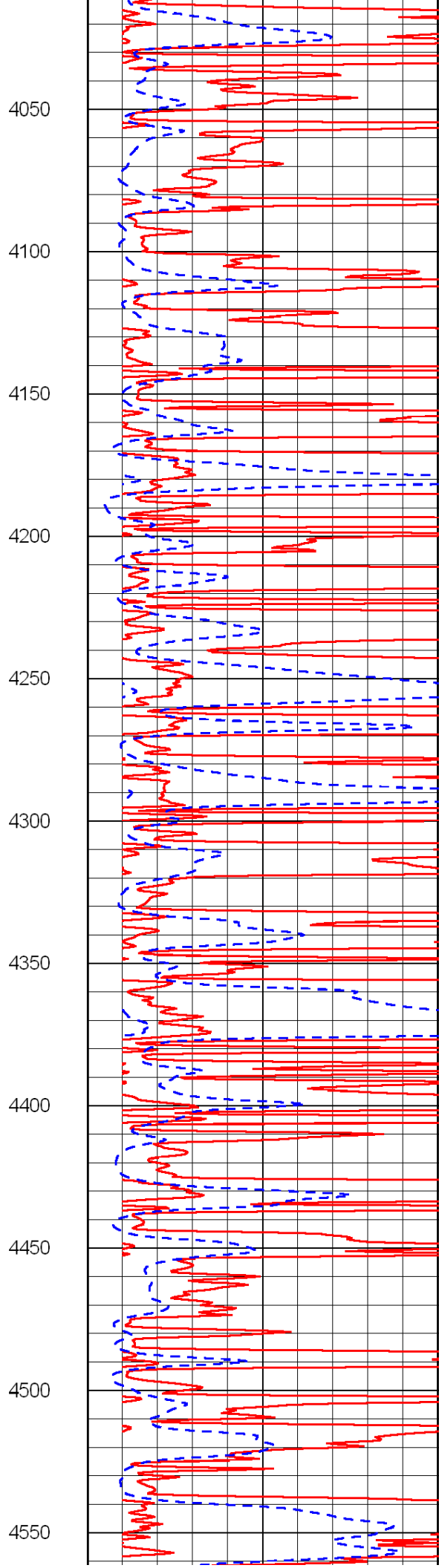
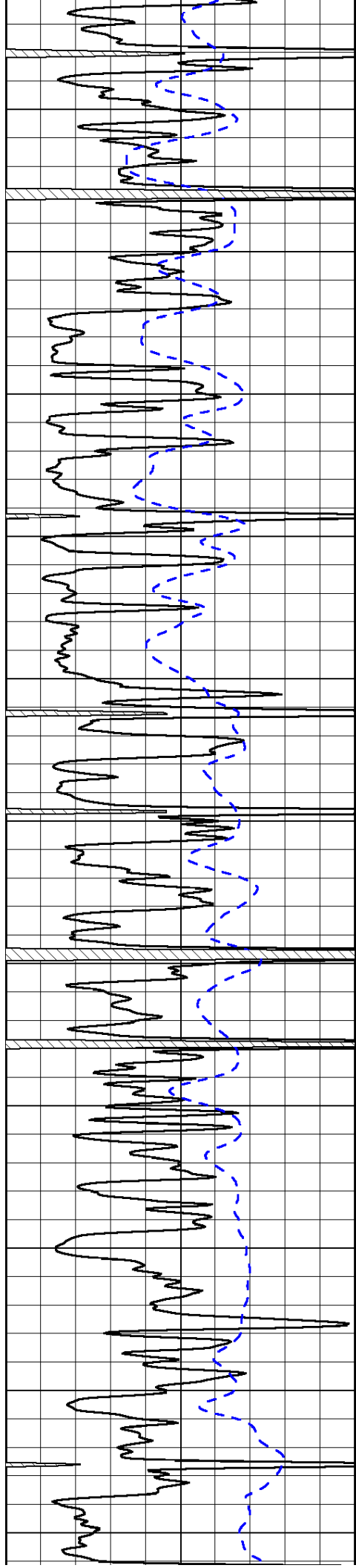


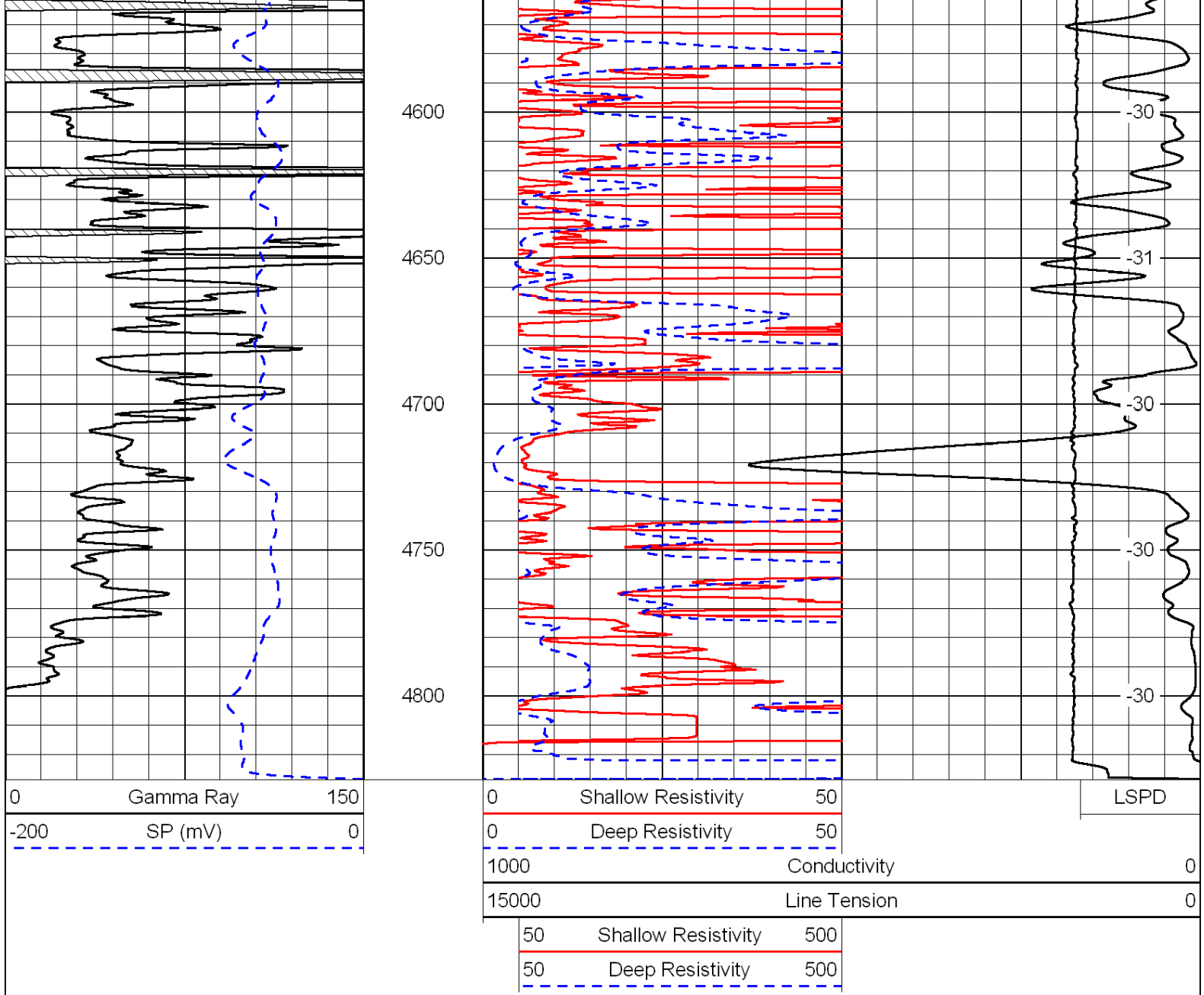




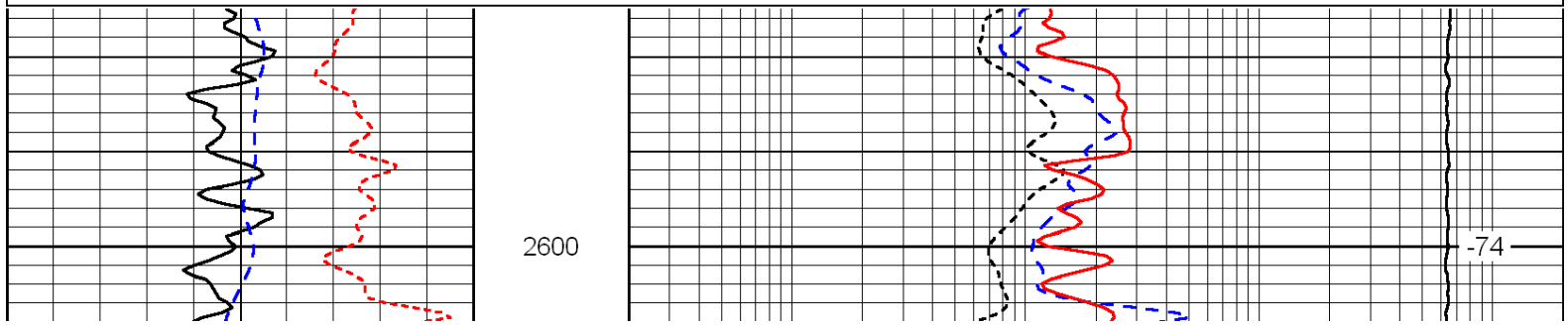
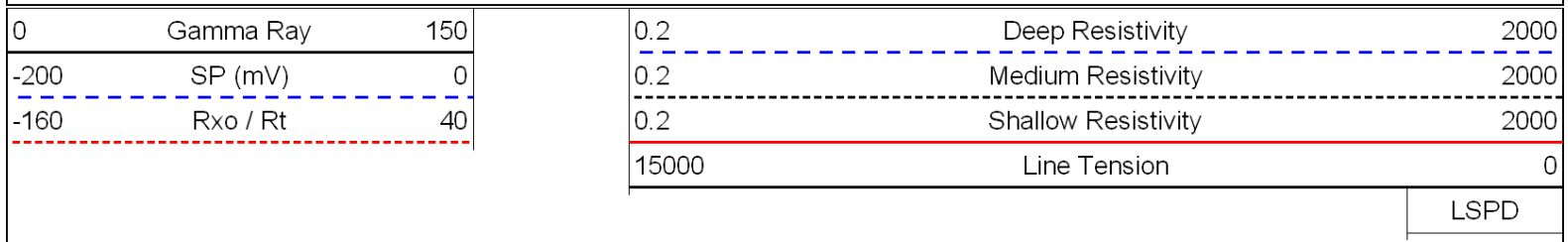


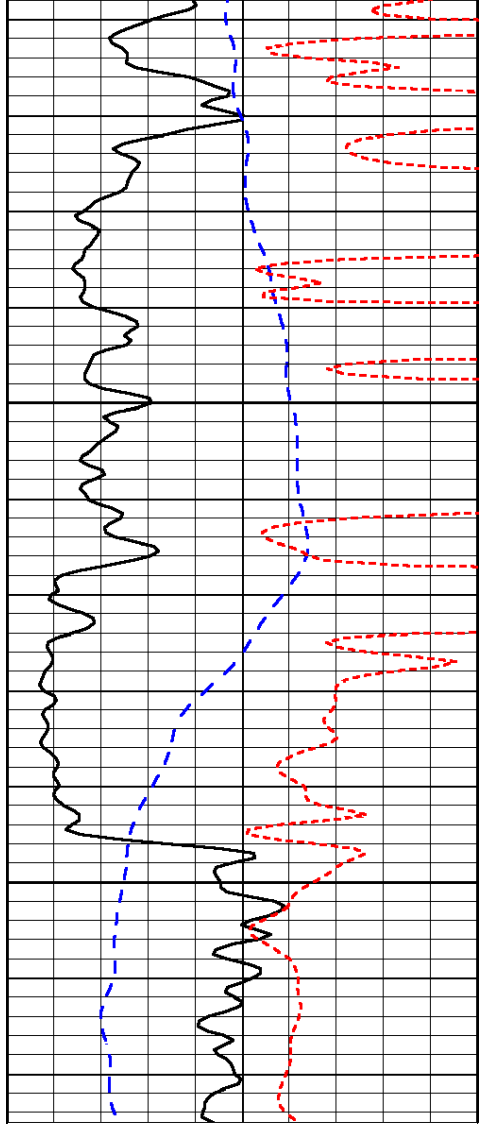






Database File: c:\warrior\data\chaco energy\_wilgers no.2\chaco hd.db  
 Dataset Pathname: dil/chcostk  
 Presentation Format: dil  
 Dataset Creation: Tue Jun 14 01:59:30 2011  
 Charted by: Depth in Feet scaled 1:240

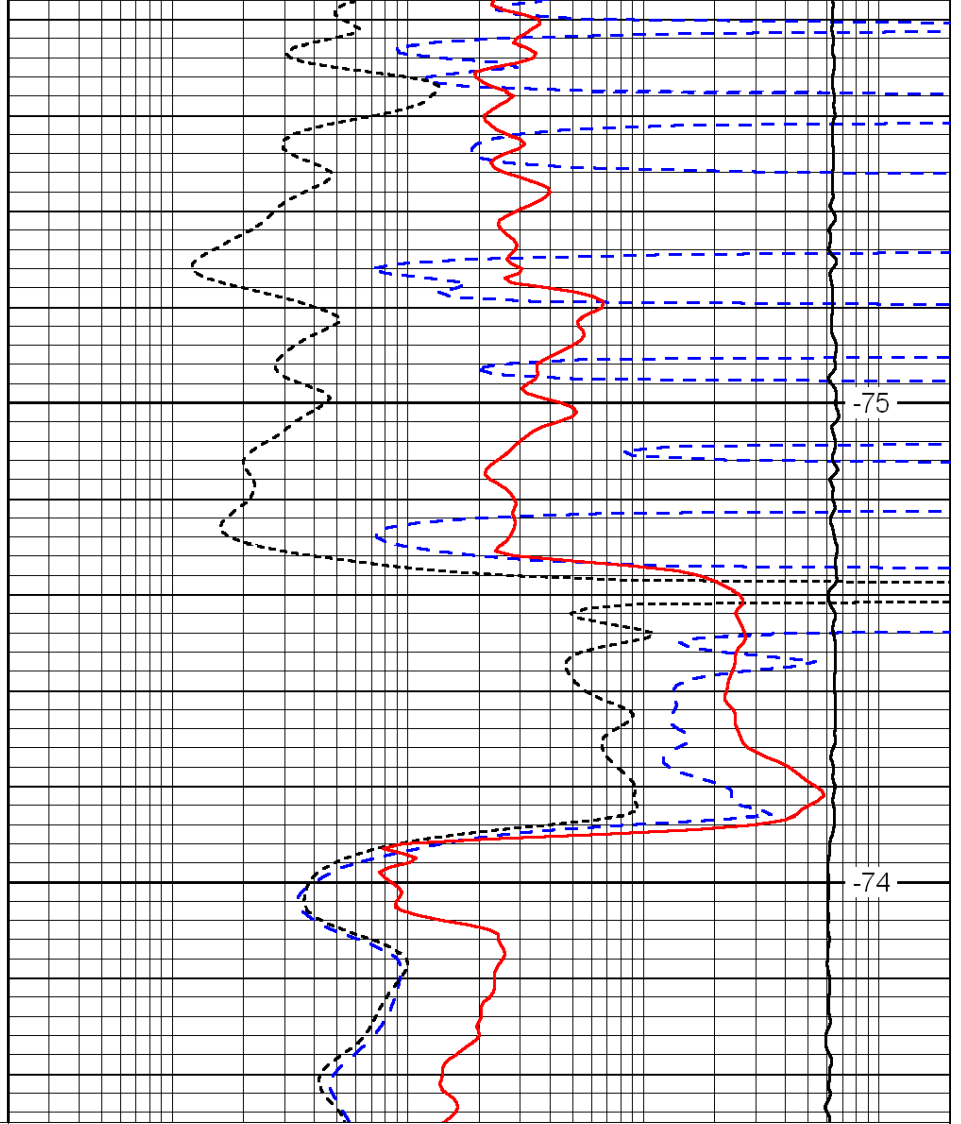




0	Gamma Ray	150
-200	SP (mV)	0
-160	Rxo / Rt	40

2650

2700



0.2	Deep Resistivity	2000
0.2	Medium Resistivity	2000
0.2	Shallow Resistivity	2000
15000	Line Tension	0

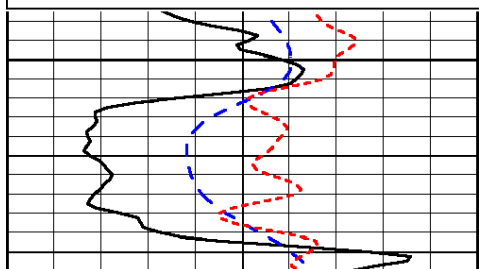
LSPD

Database File: c:\warrior\data\chaco energy\_wilgers no.2\chaco hd.db  
 Dataset Pathname: dil/chcostk  
 Presentation Format: dil  
 Dataset Creation: Tue Jun 14 01:59:30 2011  
 Charted by: Depth in Feet scaled 1:240

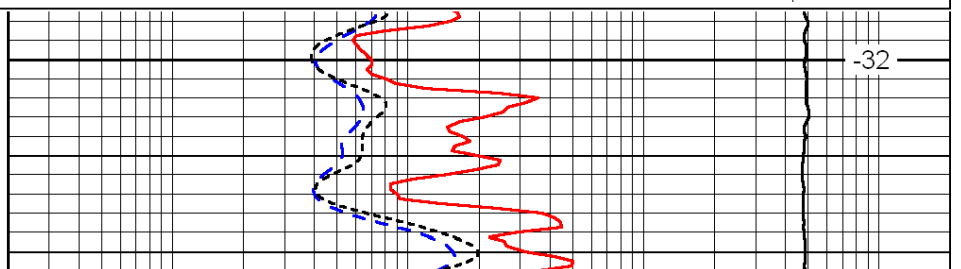
0	Gamma Ray	150
-200	SP (mV)	0
-160	Rxo / Rt	40

0.2	Deep Resistivity	2000
0.2	Medium Resistivity	2000
0.2	Shallow Resistivity	2000
15000	Line Tension	0

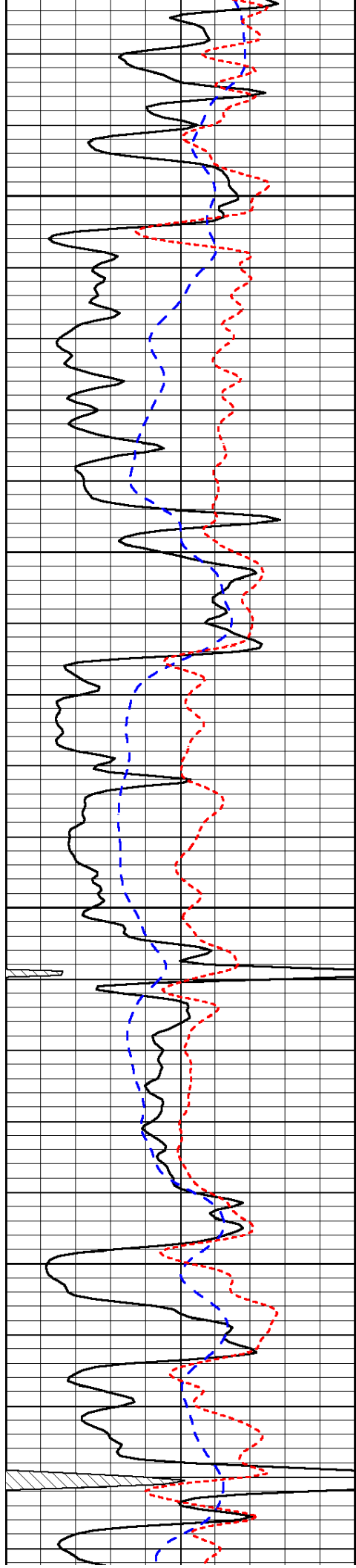
LSPD



3800



-32

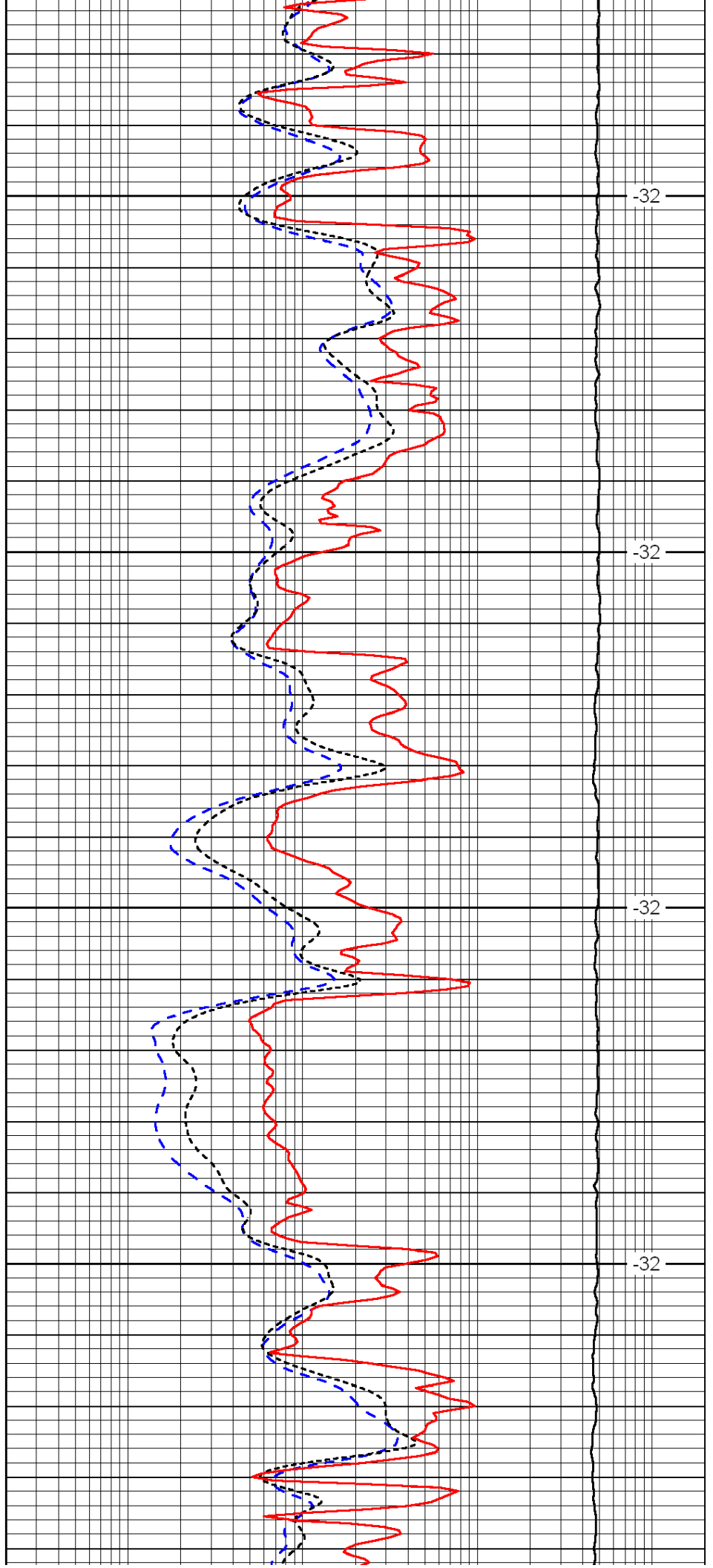


3850

3900

3950

4000

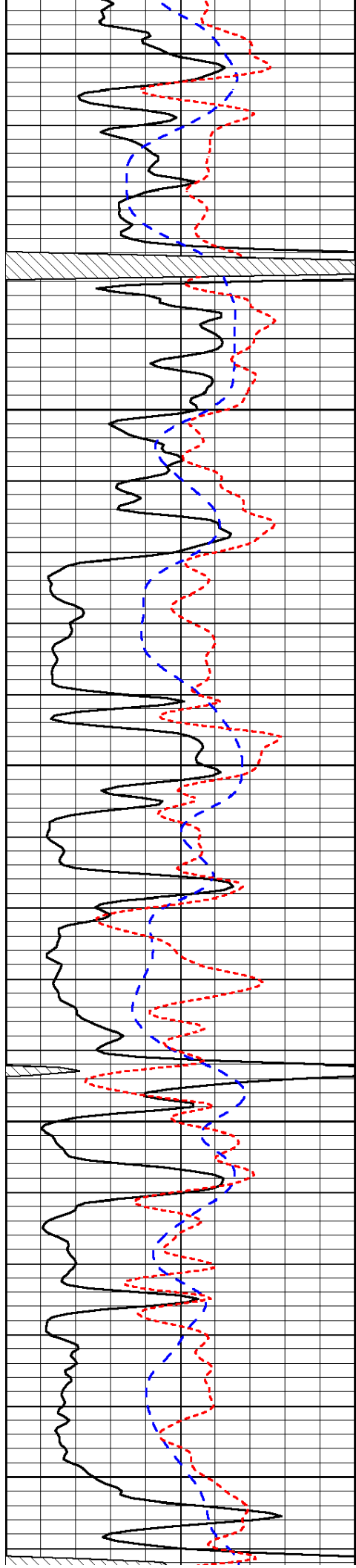


-32

-32

-32

-32



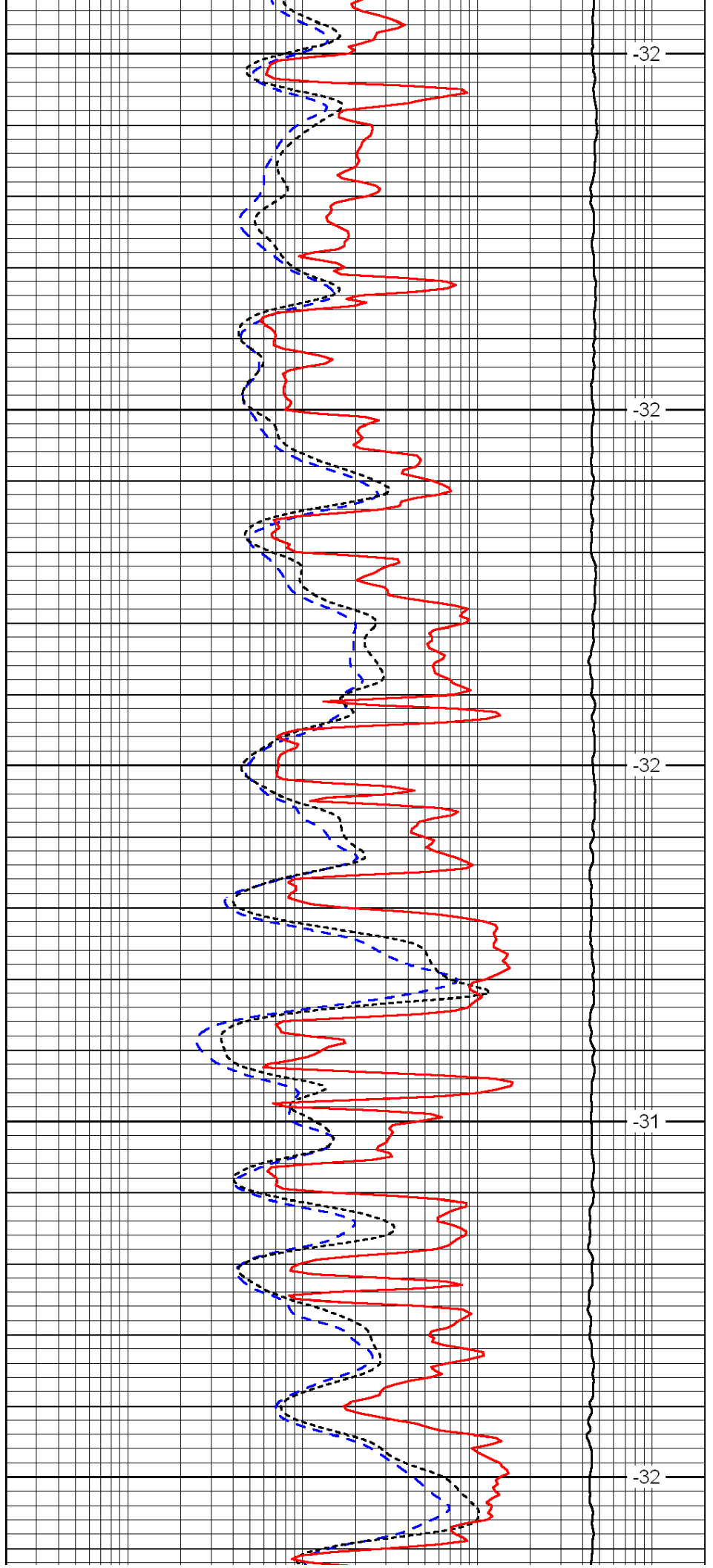
4050

4100

4150

4200

4250



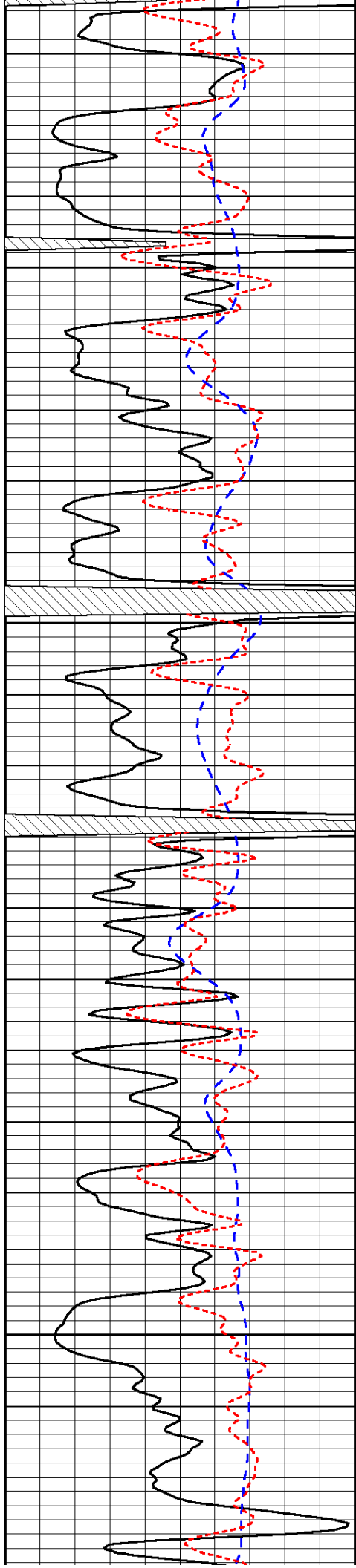
-32

-32

-32

-31

-32

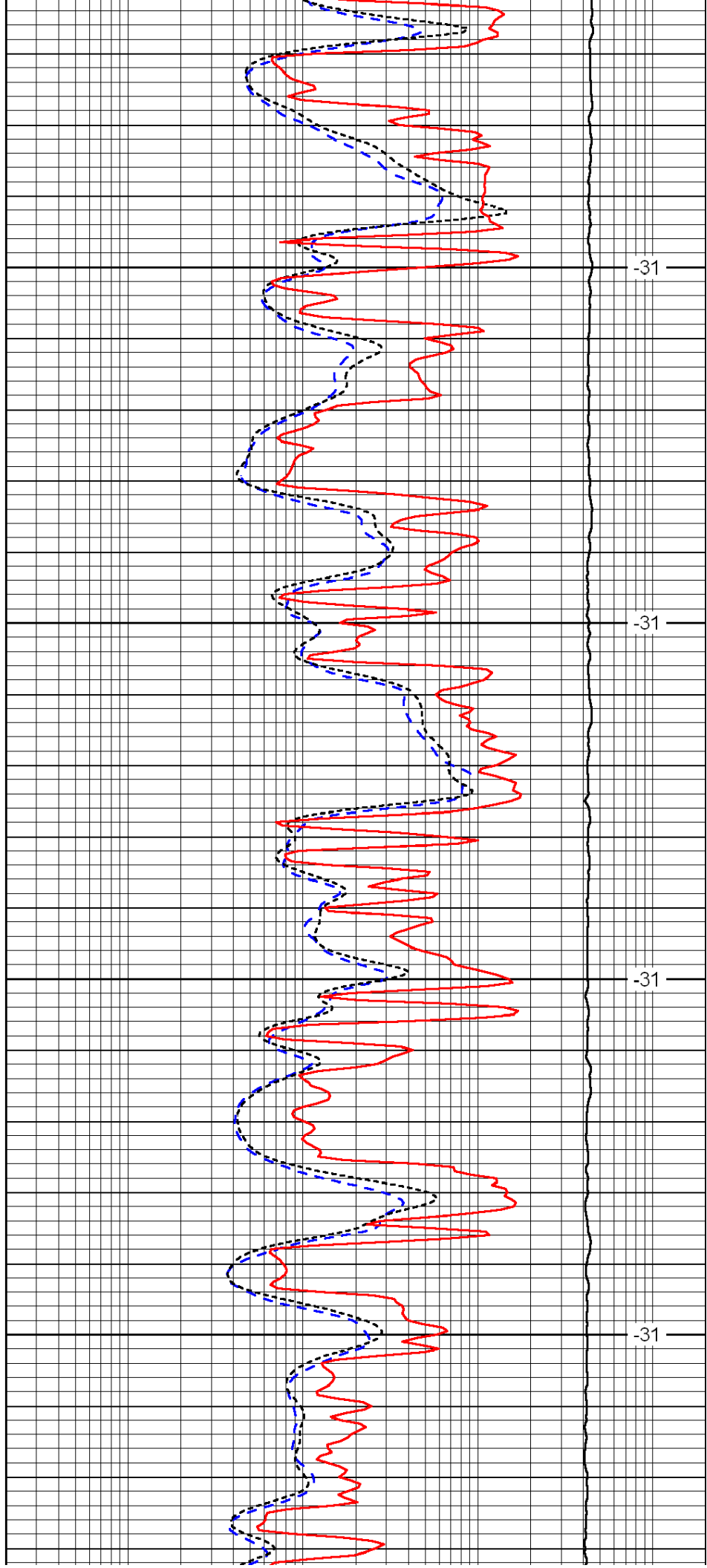


4300

4350

4400

4450

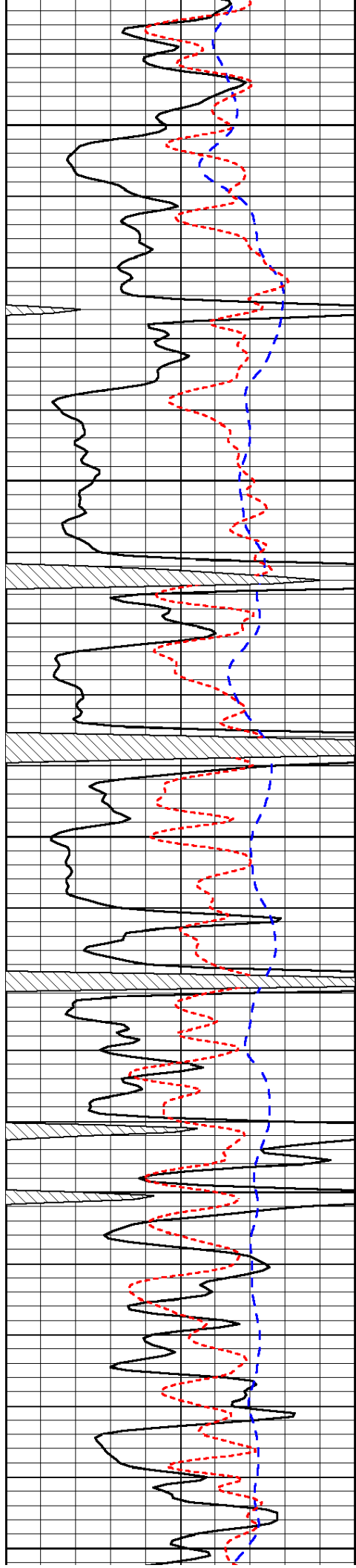


-31

-31

-31

-31



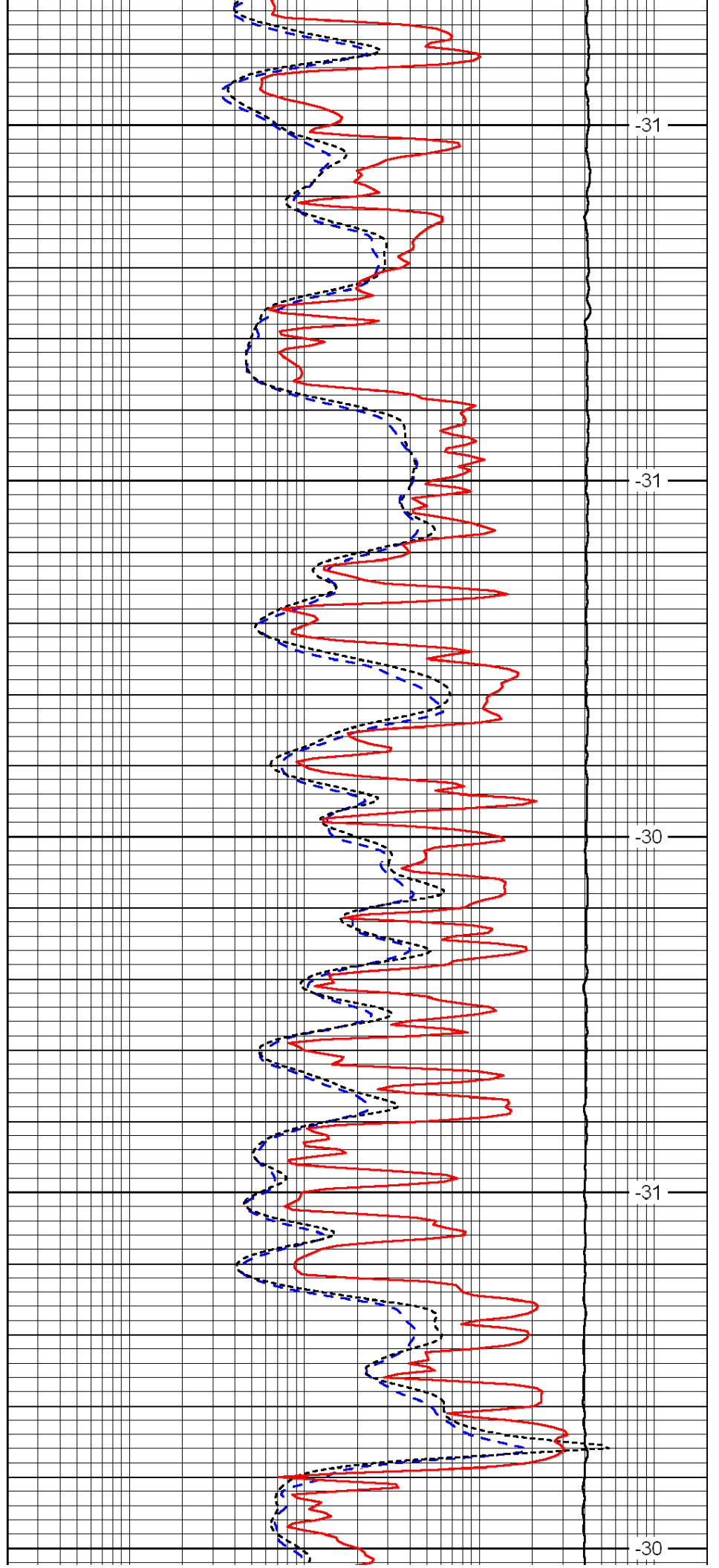
4500

4550

4600

4650

4700



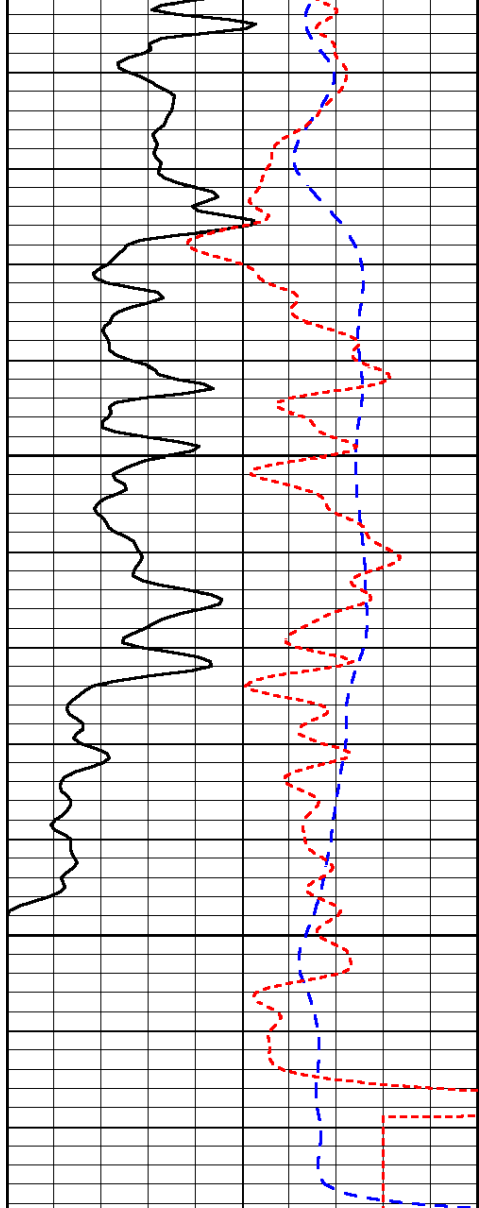
-31

-31

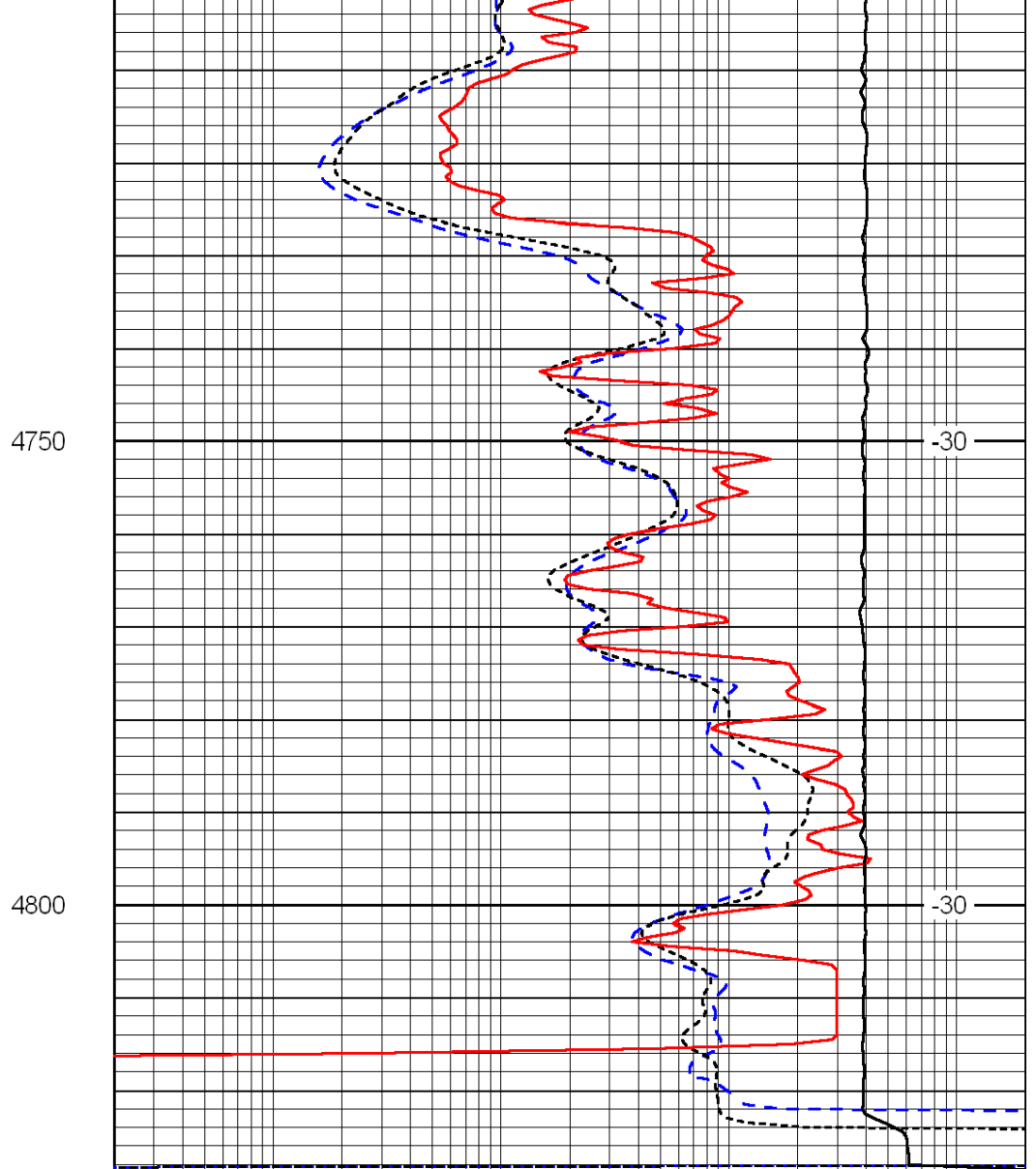
-30

-31

-30



0	Gamma Ray	150
-200	SP (mV)	0
-160	Rxo / Rt	40



0.2	Deep Resistivity	2000
0.2	Medium Resistivity	2000
0.2	Shallow Resistivity	2000
15000	Line Tension	0

LSPD