



Microresistivity Log

DIGITAL LOG (785) 625-3858

API No. 15-101-22294-00-00	Company Flatirons Resources, LLC	Location NE-SE-SW-SW 430' FSL & 1160' FWL
	Well Conner No. 14-27	
	Field Wildcat	
	County Lane	State Kansas
	Sec: 27	Twp: 18 S Rge: 30 W
Permanent Datum Log Measured From Drilling Measured From	Ground Level Kelly Bushing Kelly Bushing	Elevation 2875 7 Ft. Above Perm. Datum K.B. 2882 D.F. 2875 G.L. 2875

Date	6/14/2011
Run Number	two
Depth Driller	4620
Depth Logger	4622
Bottom Logged Interval	4621
Top Log Interval	3600
Casing Driller	8.625 @ 221
Casing Logger	220
Bit Size	7.875
Type Fluid in Hole	Chemical
Salinity, ppm CL	1900
Density / Viscosity	9.2 69
pH / Fluid Loss	11.0 6.2
Source of Sample	Flowline
Rm @ Meas. Temp	1.90 @ 65
Rmf @ Meas. Temp	1.43 @ 65
Rmc @ Meas. Temp	2.57 @ 65
Source of Rmf / Rmc	Charts
Rm @ BHT	1.01 @ 122
Operating Rig Time	5 Hours
Max Rec. Temp. F	122
Equipment Number	15
Location	Hays
Recorded By	B. Becker
Witnessed By	Tim Priest

<<< Fold Here >>>

All interpretations are opinions based on inferences from electrical or other measurements and we cannot and do not guarantee the accuracy or correctness of any interpretation, and we shall not, except in the case of gross or willful negligence on our part, be liable or responsible for any loss, costs, damages, or expenses incurred or sustained by anyone resulting from any interpretation made by any of our officers, agents or employees. These interpretations are also subject to our general terms and conditions set out in our current Price Schedule.

Comments

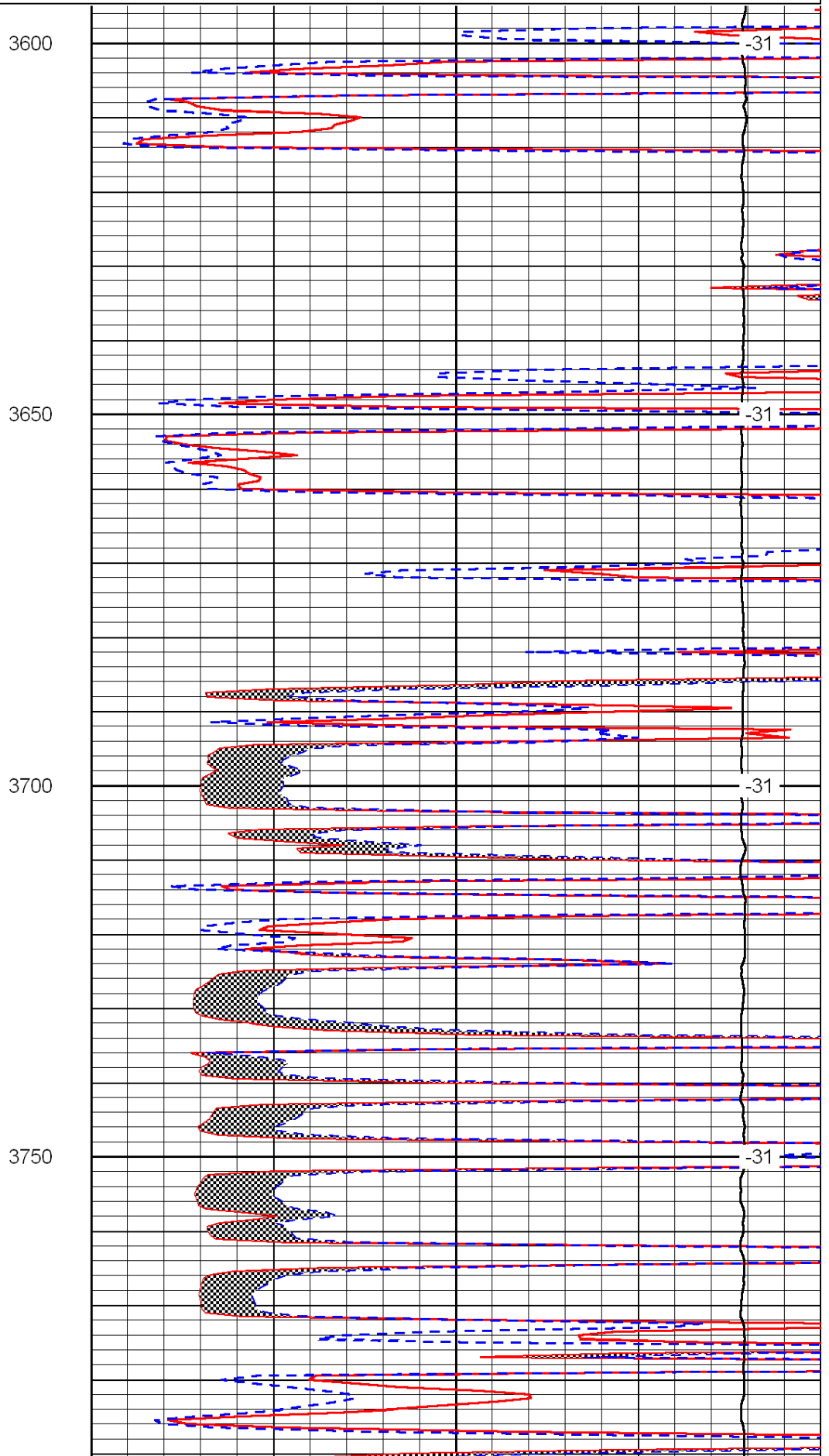
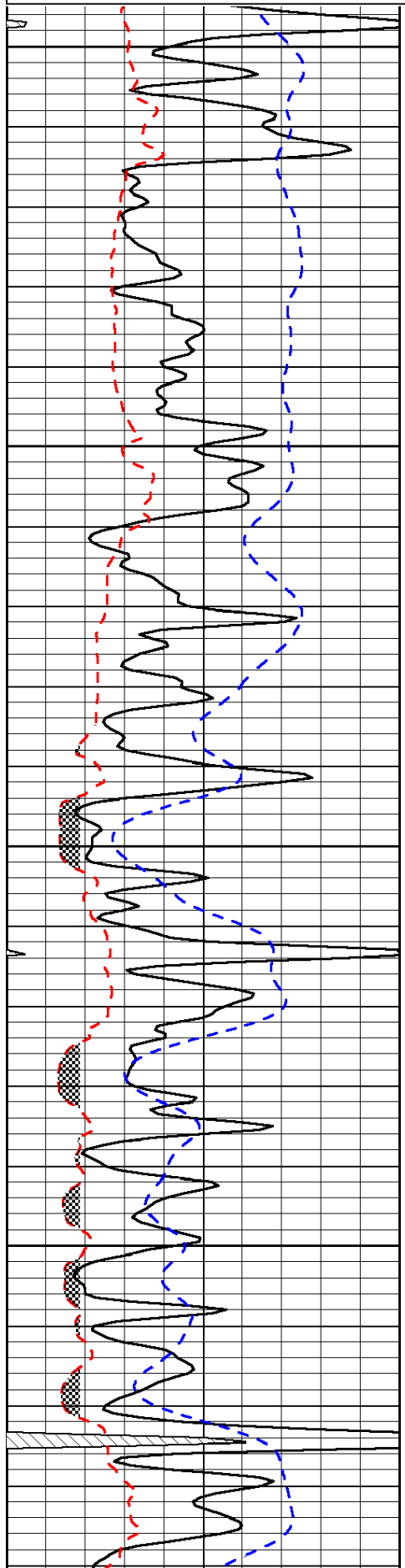
Thank you for using Log-Tech, Inc.
(785) 625-3858

Dighton, Ks; 8 West to Dodge Rd;
2 South; 1 West; North Into

0	Gamma Ray	150
6	Micro Log Caliper (GAPI)	16
-200	SP (mV)	0

0	Micro Inverse 1 X 1	40
0	Micro Normal 2"	40
15000	Line Weight	0

LSPD



3600

3650

3700

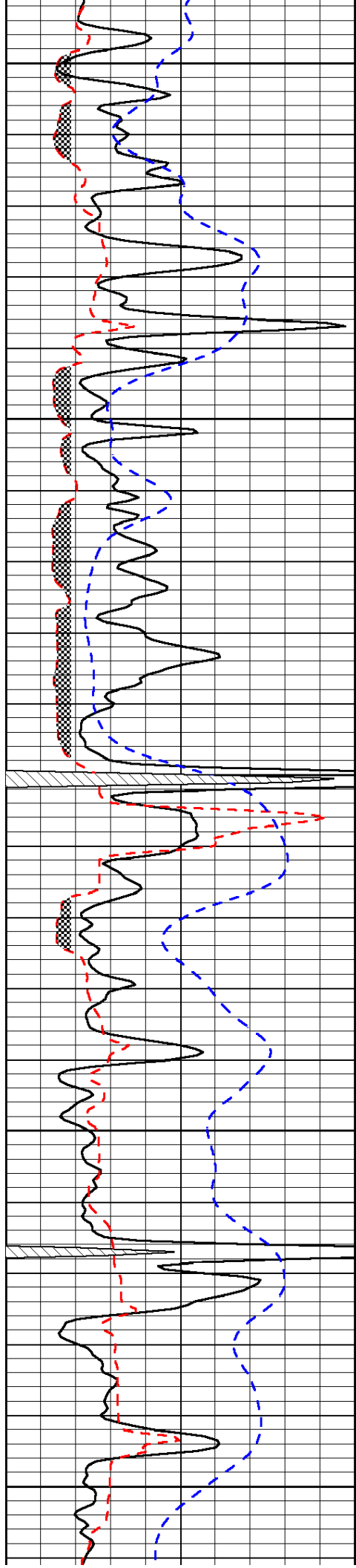
3750

-31

-31

-31

-31



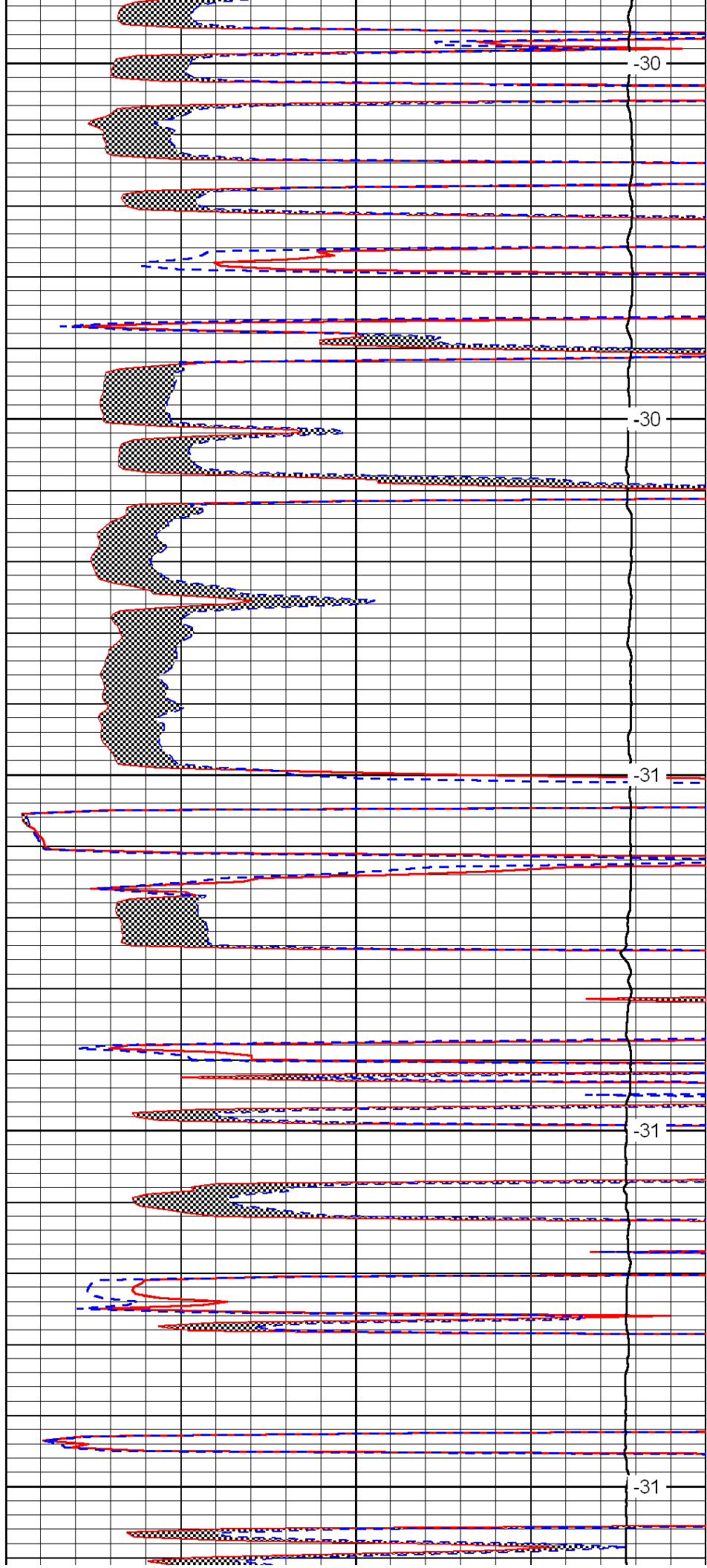
3800

3850

3900

3950

4000



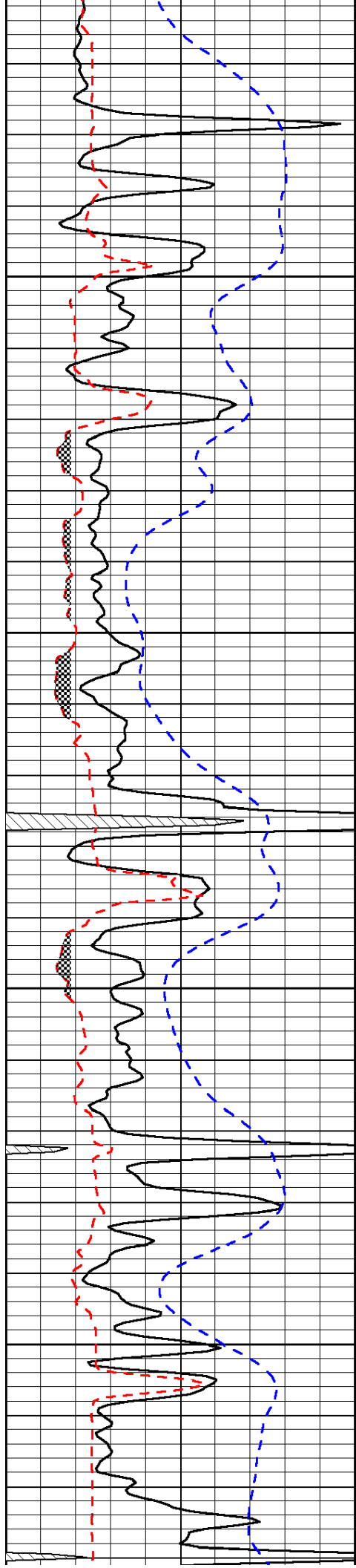
-30

-30

-31

-31

-31

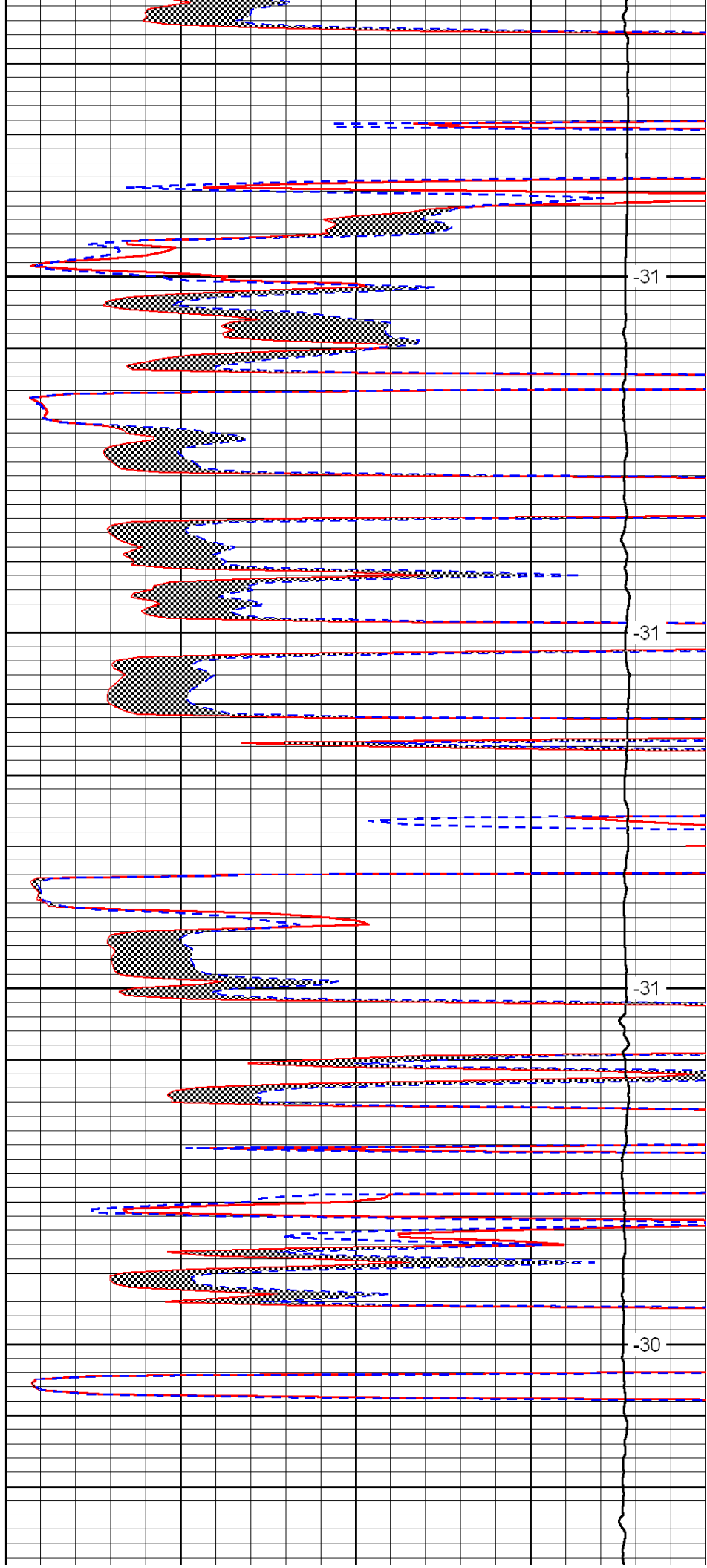


4050

4100

4150

4200

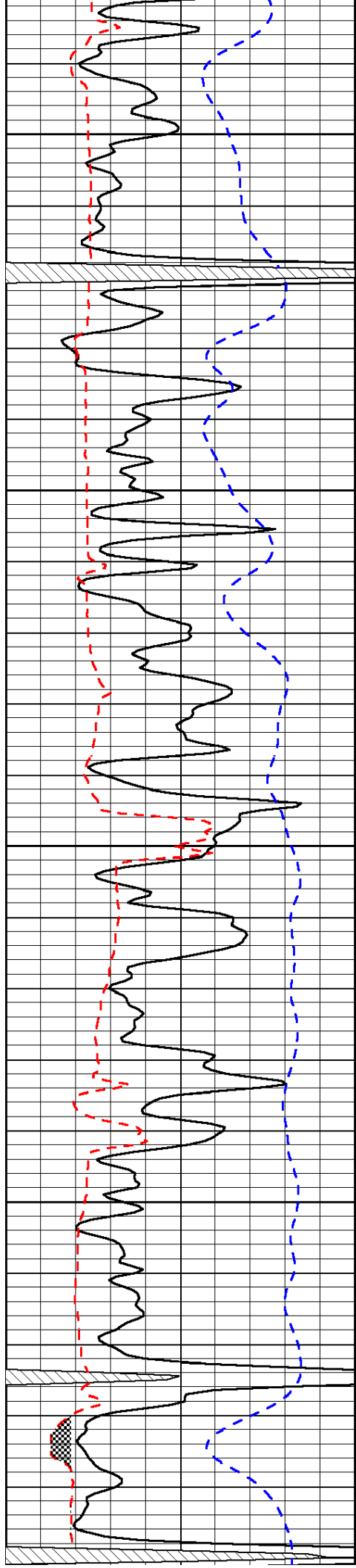


-31

-31

-31

-30



4250

4300

4350

4400

4450

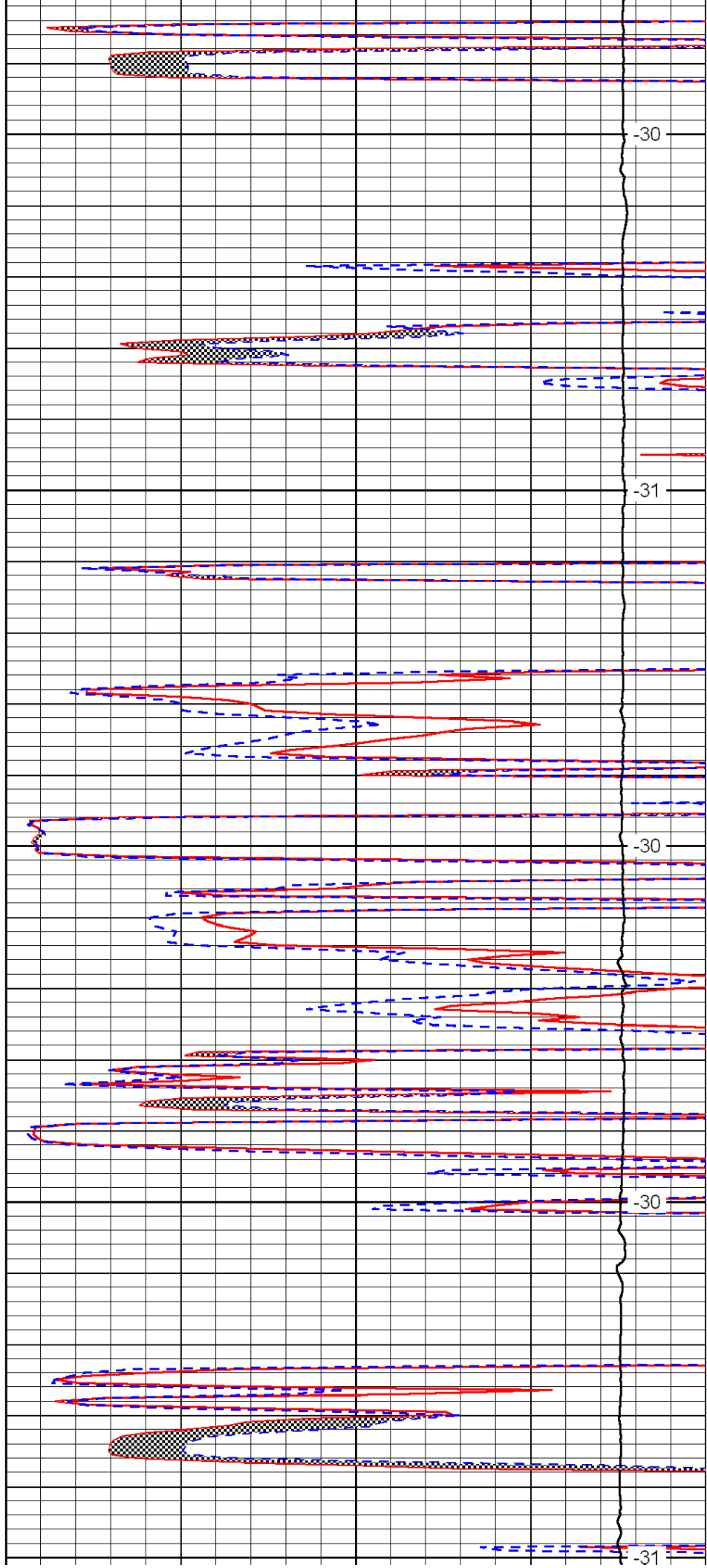
-30

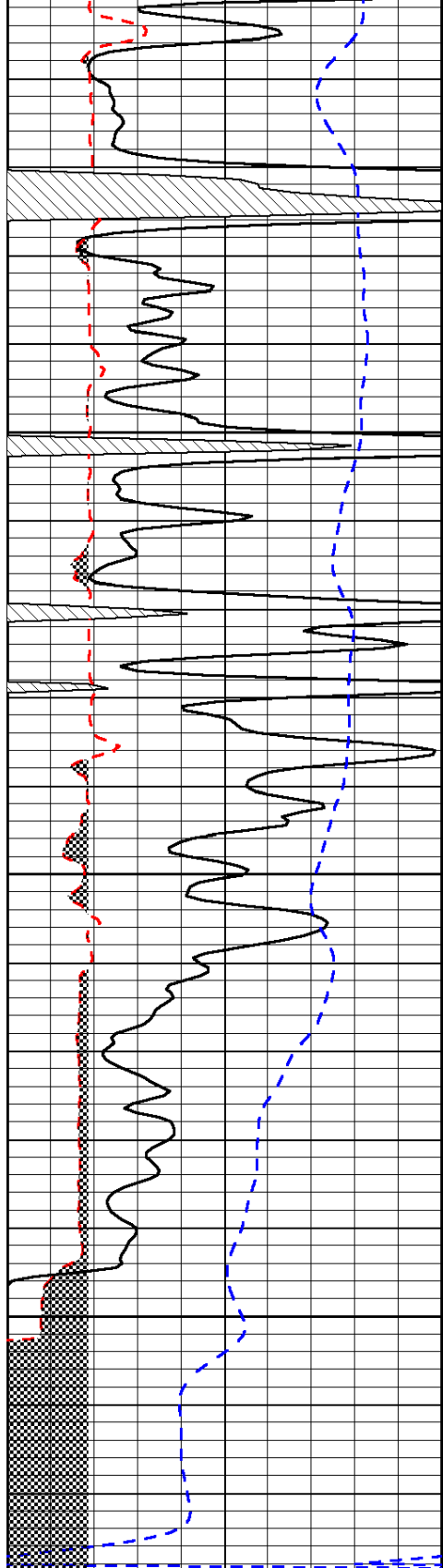
-31

-30

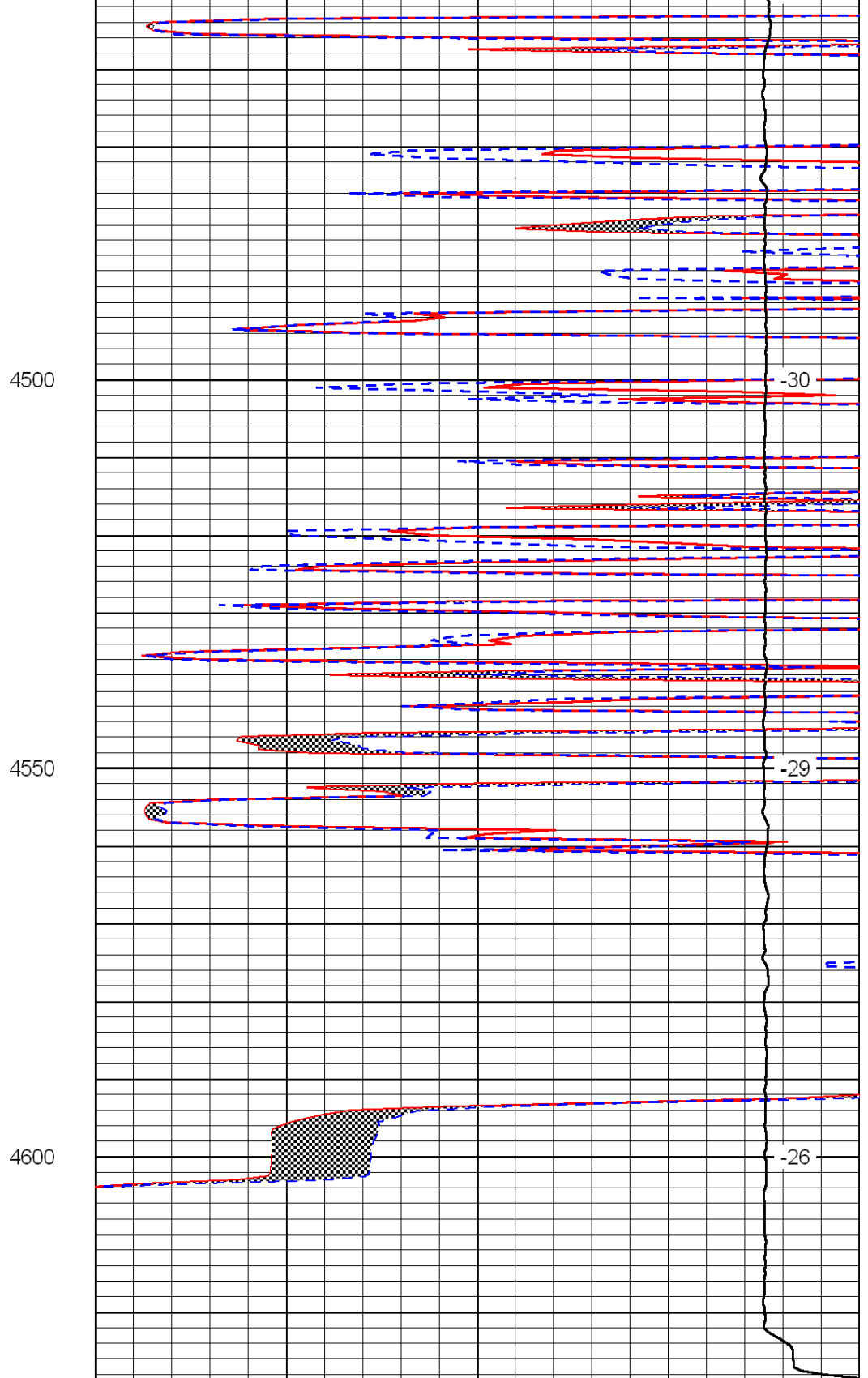
-30

-31





0	Gamma Ray	150
6	Micro Log Caliper (GAPI)	16
-200	SP (mV)	0



0	Micro Inverse 1 X 1	40
0	Micro Normal 2''	40
15000	Line Weight	0

LSPD