



Dual Induction Log

DIGITAL LOG (785) 625-3858

API No.	15-101-22294-00-00	
Company	Flatirons Resources, LLC	
Well	Conner No. 14-27	
Field	Wildcat	
County	Lane	State
Location	NE-SE-SW-SW 430' FSL & 1160' FWL	
Sec: 27	Twp: 18 S	Rge: 30 W
Permanent Datum	Ground Level	Elevation 2875
Log Measured From	Kelly Bushing	7 Ft. Above Perm. Datum
Drilling Measured From	Kelly Bushing	
		Other Services CNL/CDL MEL/BHCS
		Elevation K.B. 2882 D.F. 2875 G.L. 2875

Date	6/14/2011
Run Number	One
Depth Driller	4620
Depth Logger	4622
Bottom Logged Interval	4621
Top Log Interval	200
Casing Driller	8.625 @ 221
Casing Logger	220
Bit Size	7.875
Type Fluid in Hole	Chemical
Salinity, ppm CL	1900
Density / Viscosity	9.2 69
pH / Fluid Loss	11.0 6.2
Source of Sample	Flowline
Rm @ Meas. Temp	1.90 @ 65
Rmf @ Meas. Temp	1.43 @ 65
Rmc @ Meas. Temp	2.57 @ 65
Source of Rmf / Rmc	Charts
Rm @ BHT	1.01 @ 122
Operating Rig Time	5 Hours
Max Rec. Temp. F	122
Equipment Number	15
Location	Hays
Recorded By	B. Becker
Witnessed By	Tim Priest

<<< Fold Here >>>

All interpretations are opinions based on inferences from electrical or other measurements and we cannot and do not guarantee the accuracy or correctness of any interpretation, and we shall not, except in the case of gross or willful negligence on our part, be liable or responsible for any loss, costs, damages, or expenses incurred or sustained by anyone resulting from any interpretation made by any of our officers, agents or employees. These interpretations are also subject to our general terms and conditions set out in our current Price Schedule.

Comments

Thank you for using Log-Tech, Inc.
(785) 625-3858

Dighton, Ks; 8 West to Dodge Rd;
2 South; 1 West; North Into

Database File: c:\warrior\data\flatirons_conner no. 14-27\flatironshd.db
 Dataset Pathname: DIL/fistk
 Presentation Format: dil2in
 Dataset Creation: Tue Jun 14 11:25:05 2011
 Charted by: Depth in Feet scaled 1:600

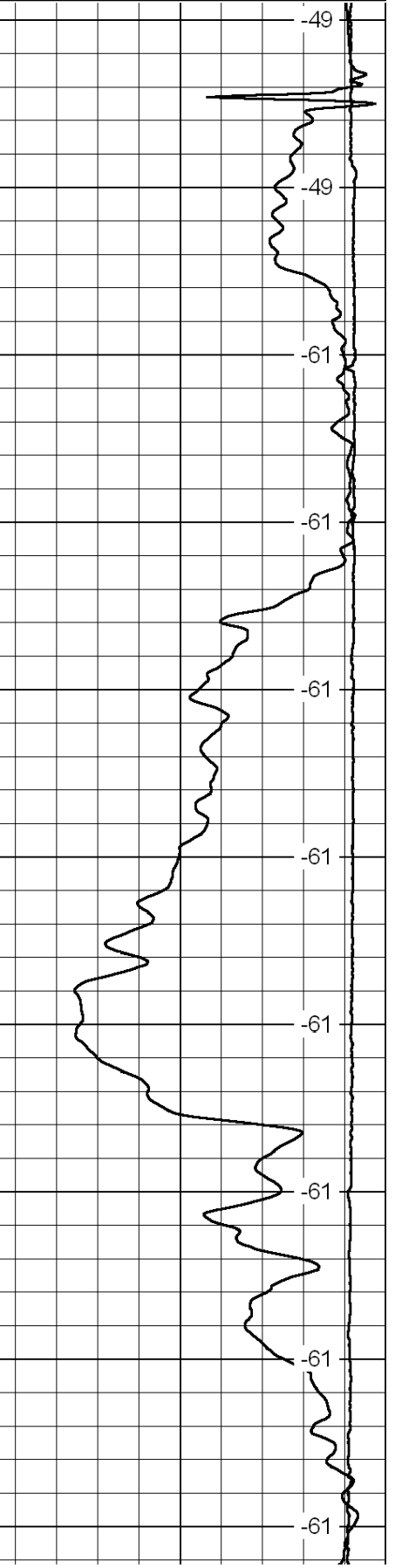
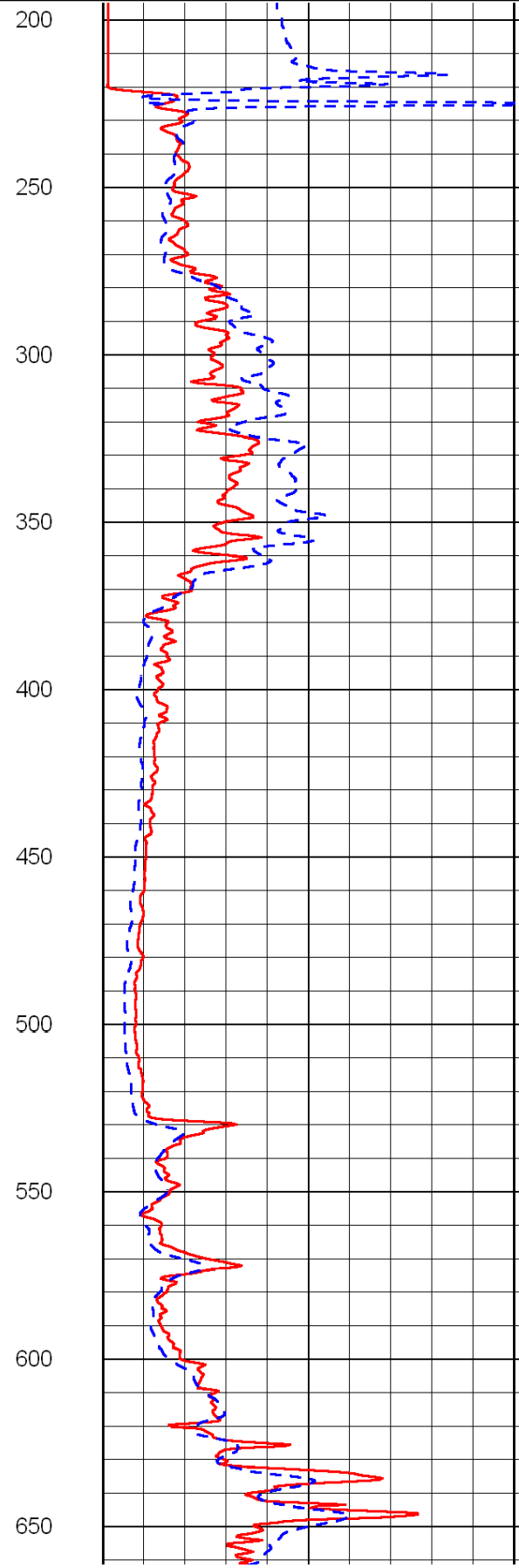
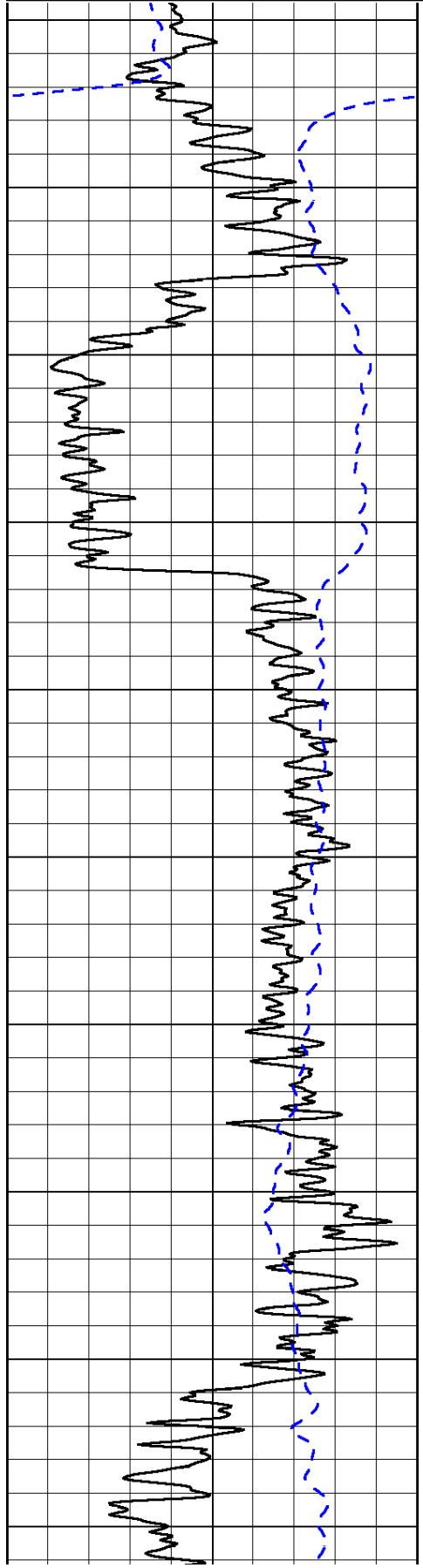
0	Gamma Ray	150
-200	SP (mV)	0

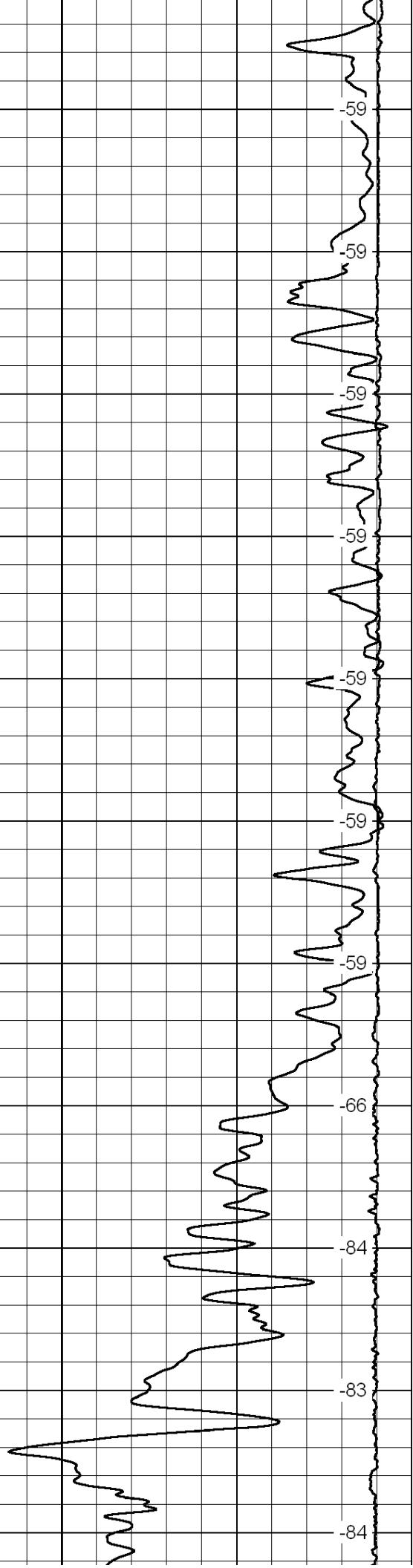
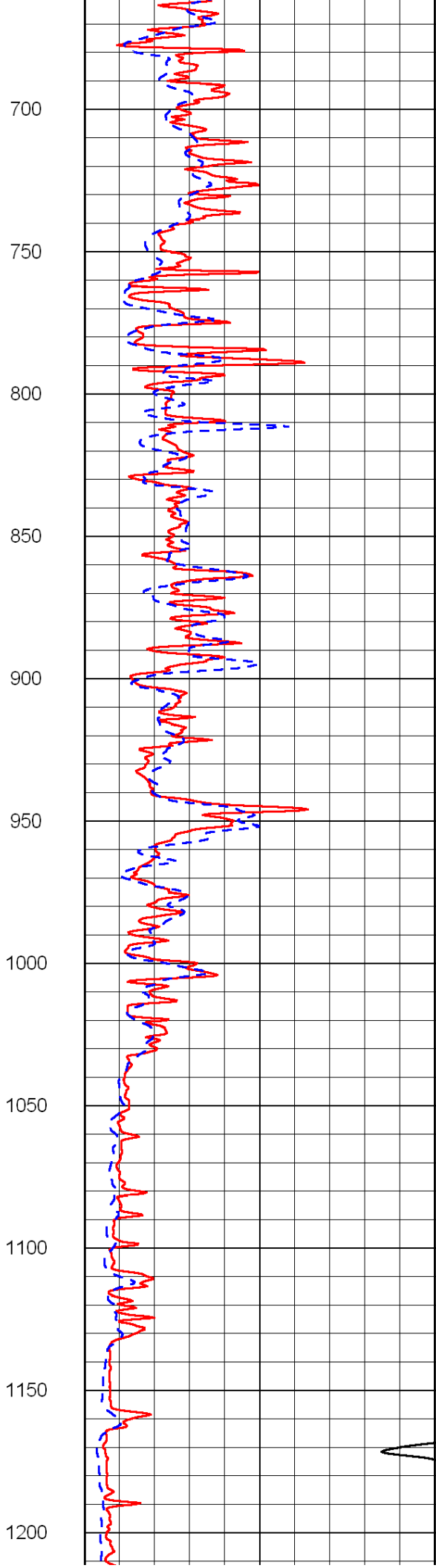
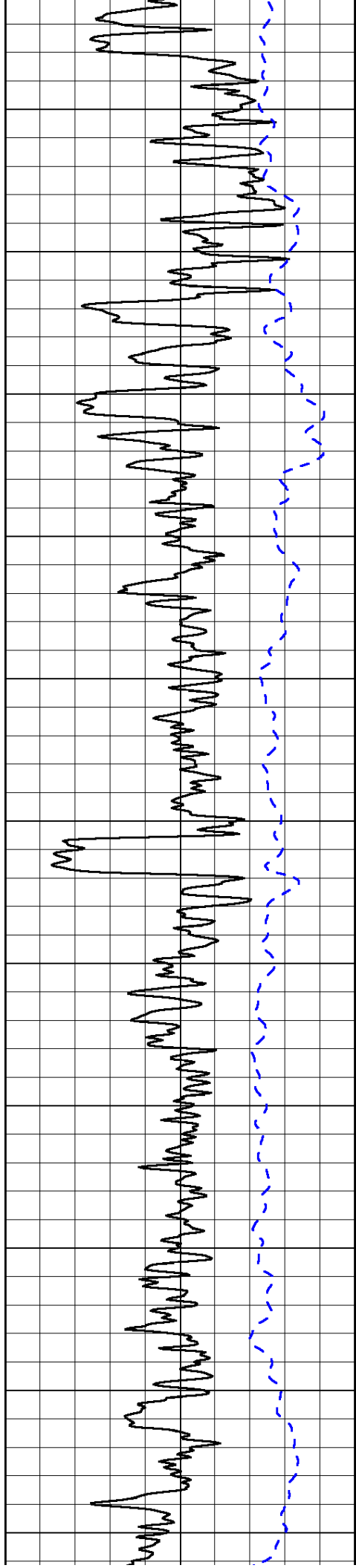
0	Shallow Resistivity	50
0	Deep Resistivity	50

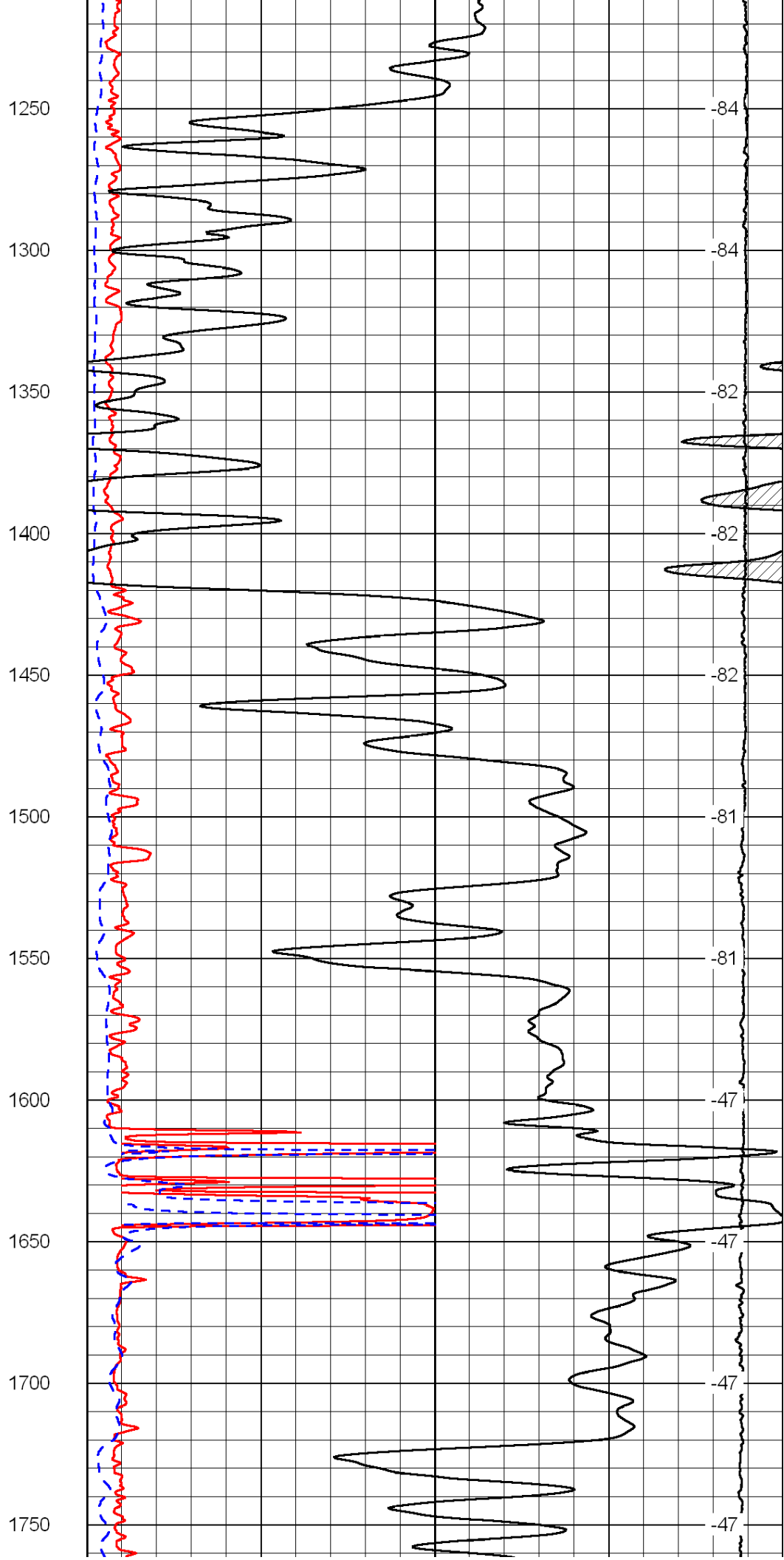
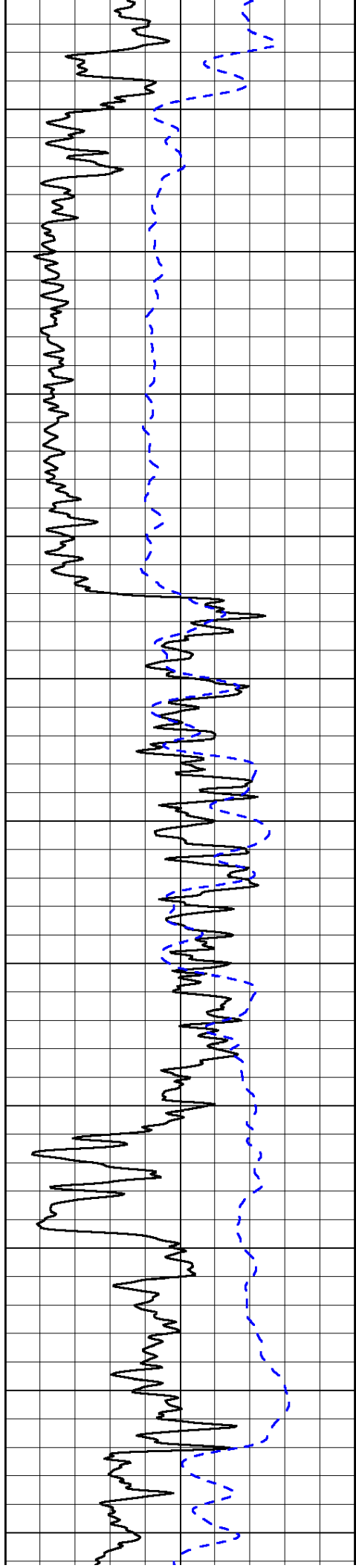
LSPD

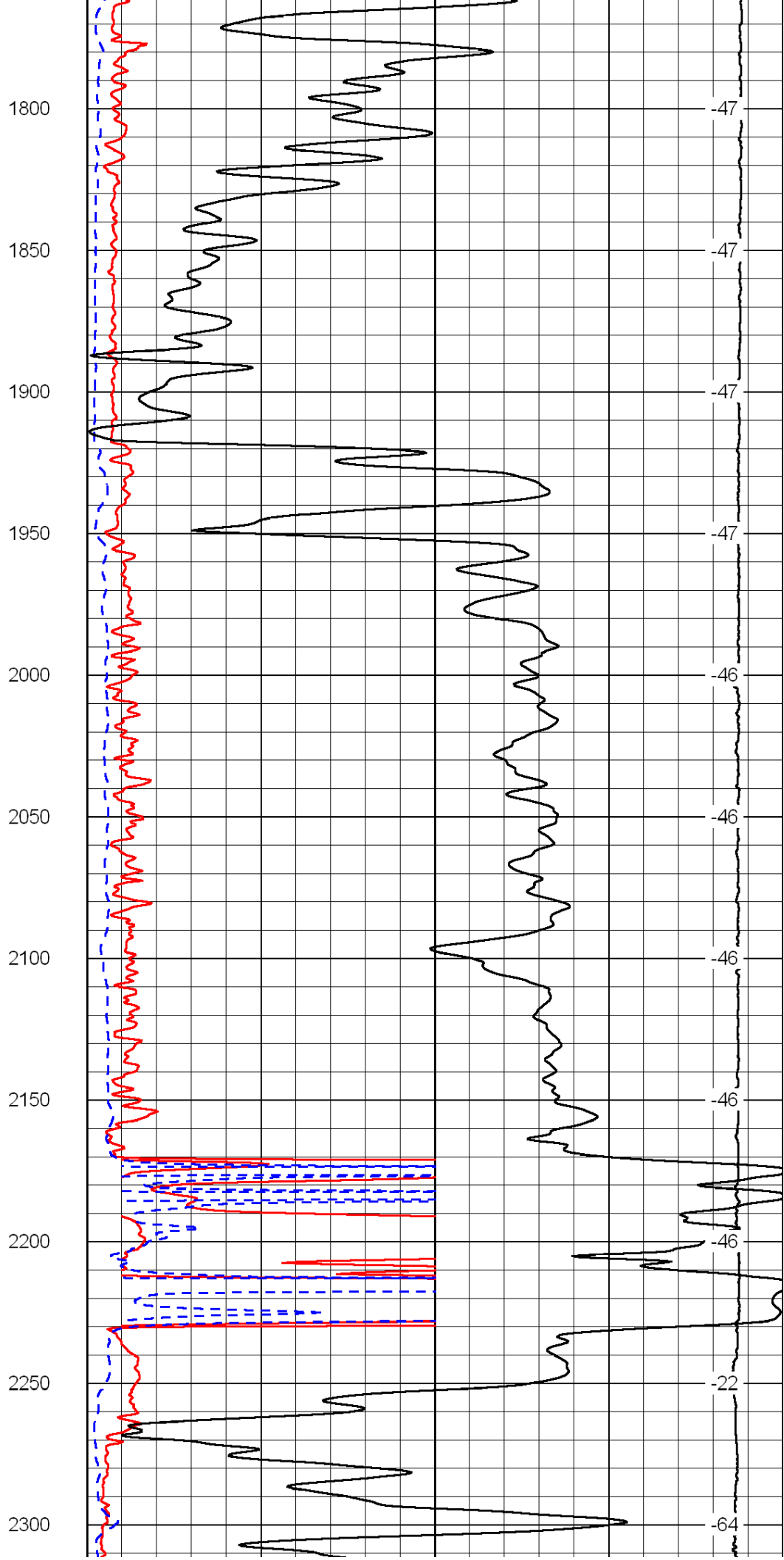
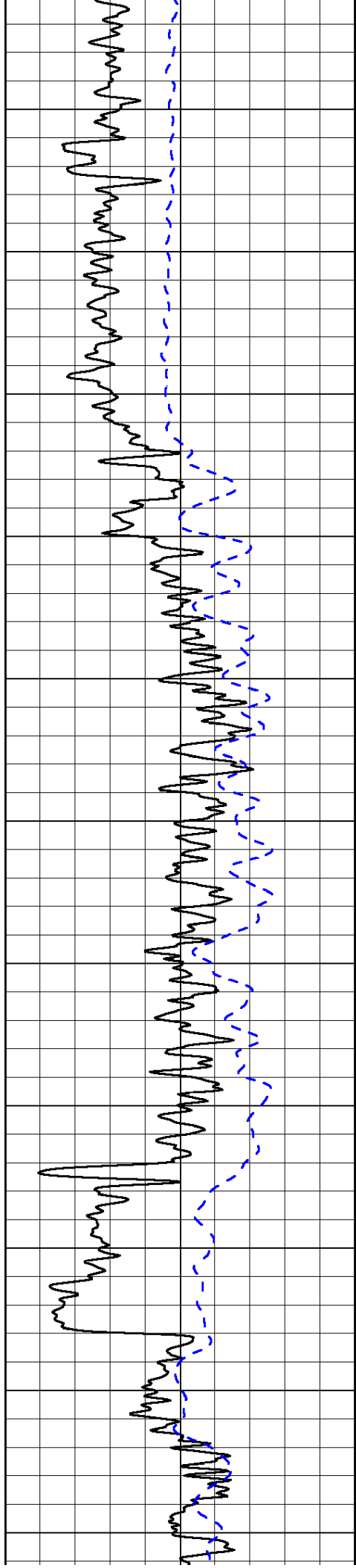
1000	Conductivity	0
15000	Line Tension	0

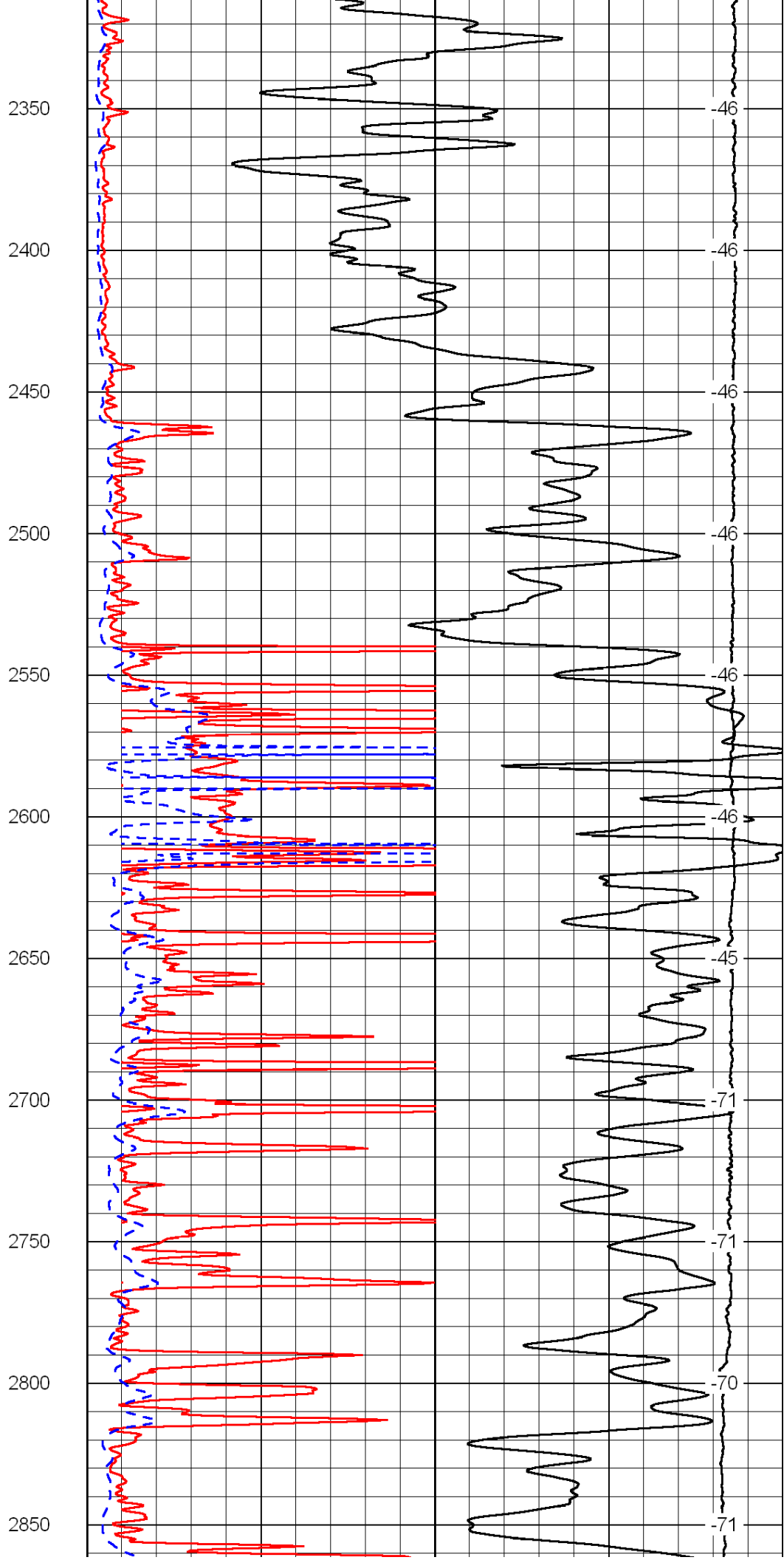
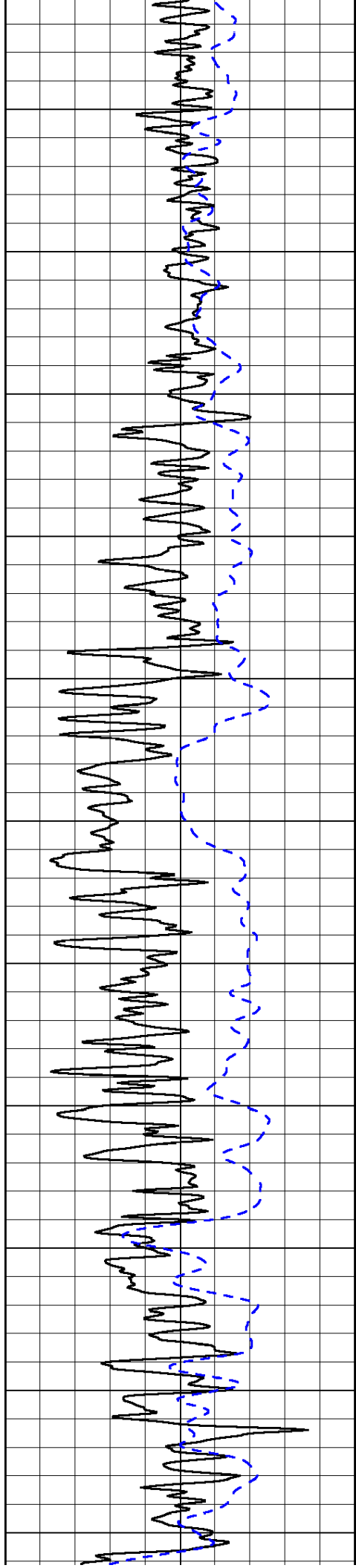
50	Shallow Resistivity	500
50	Deep Resistivity	500

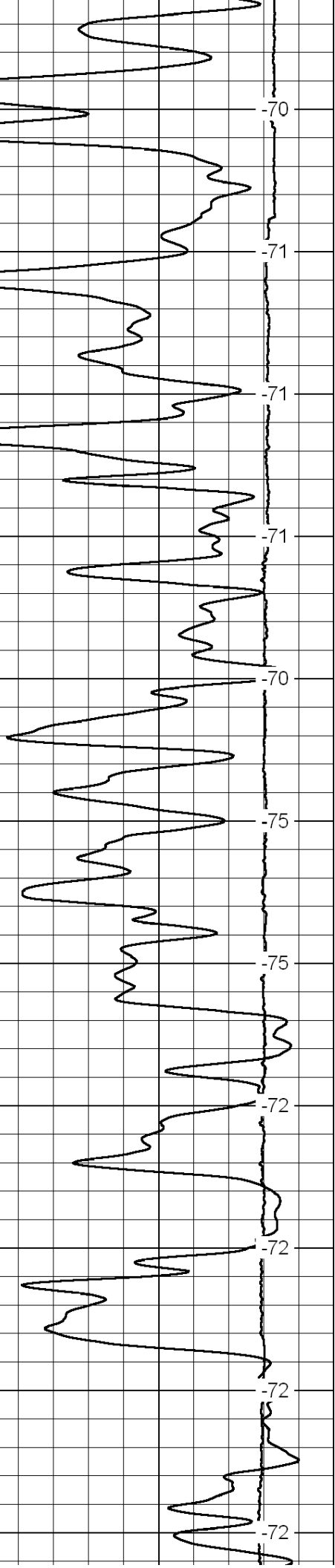
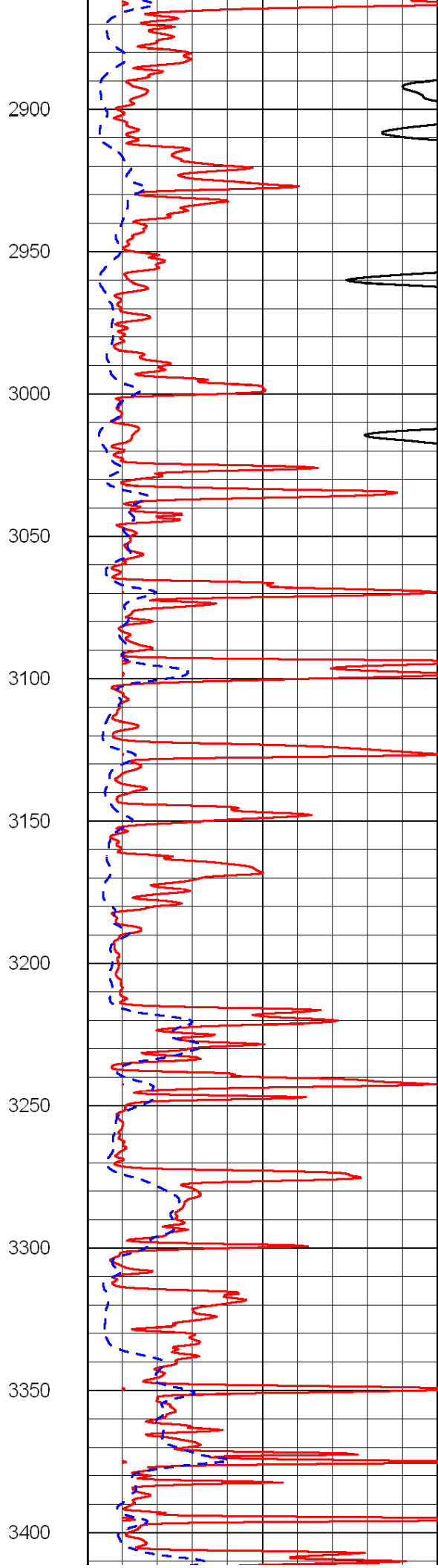
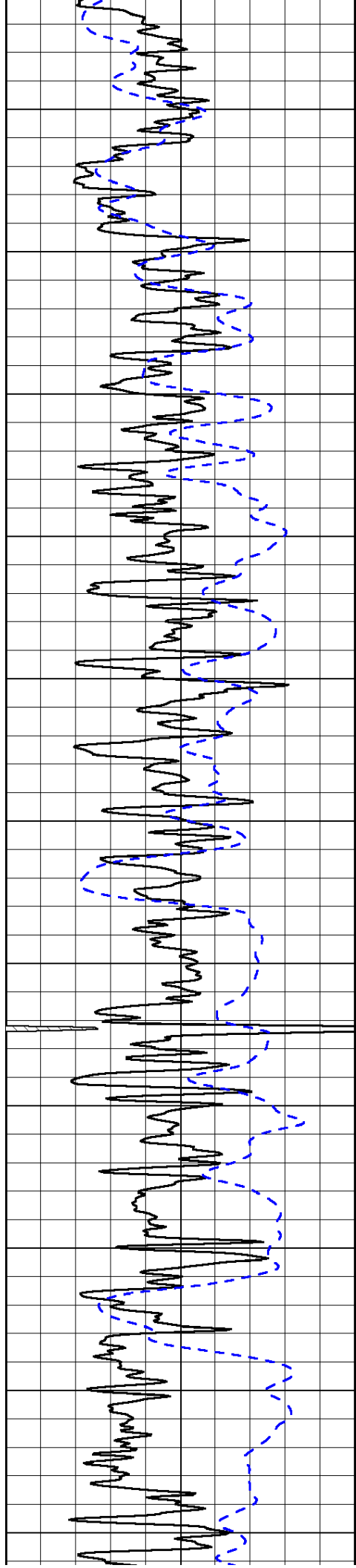


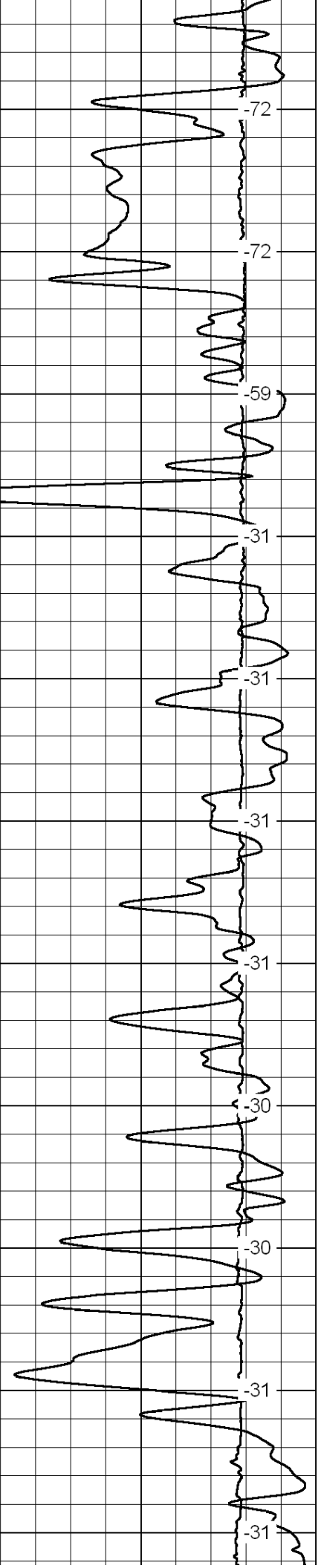
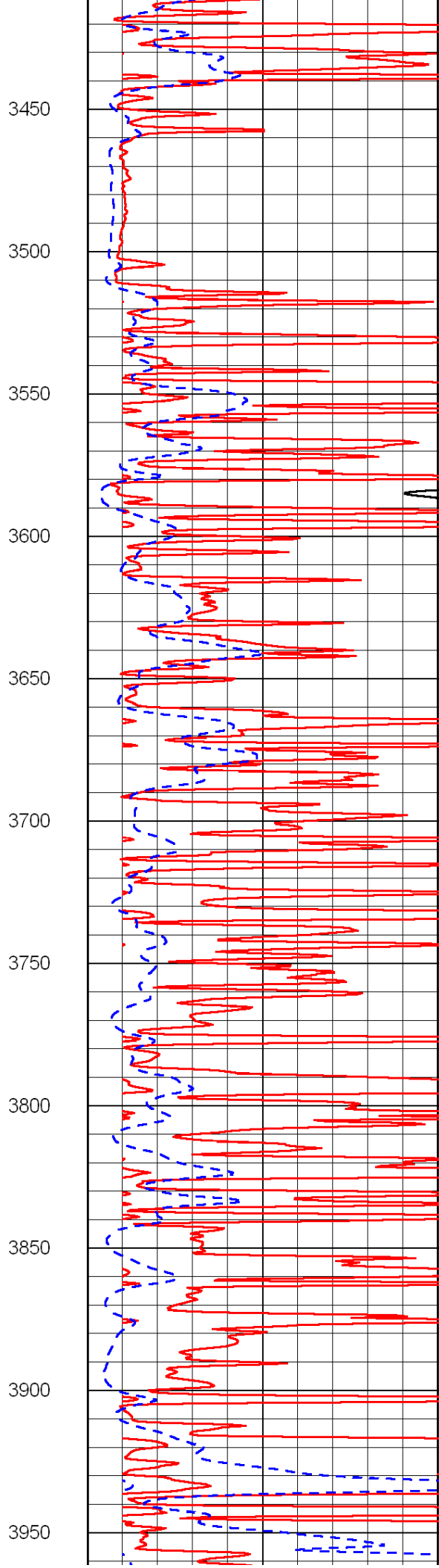
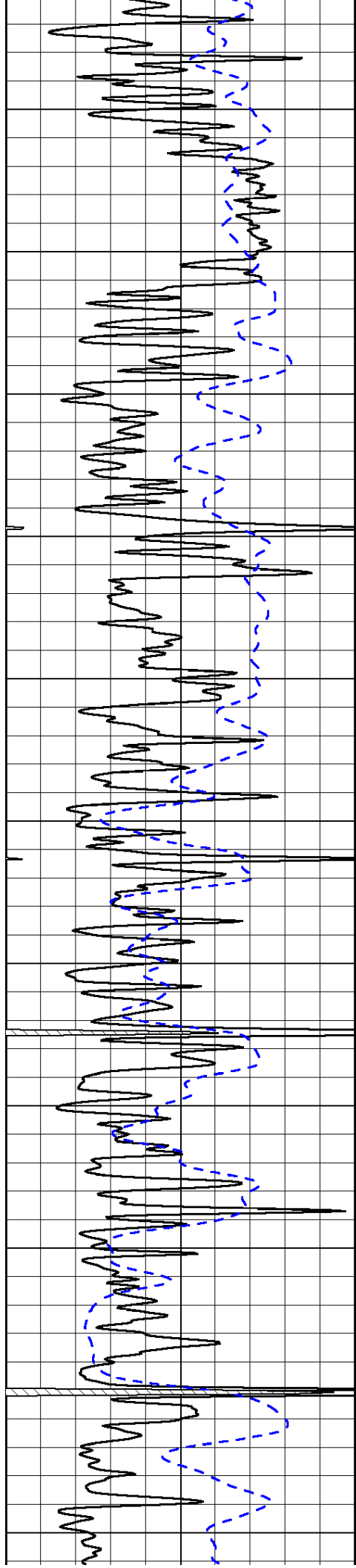


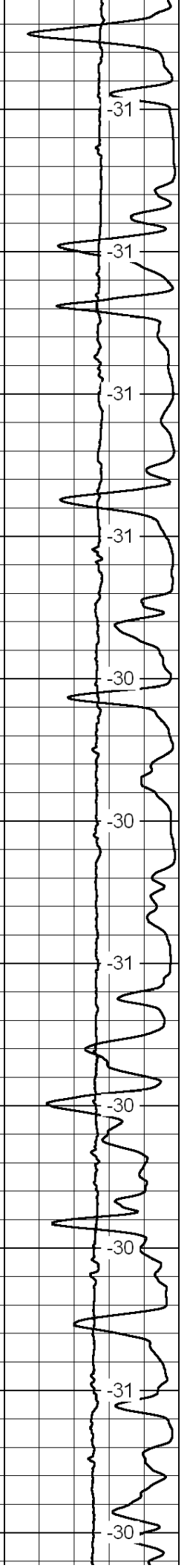
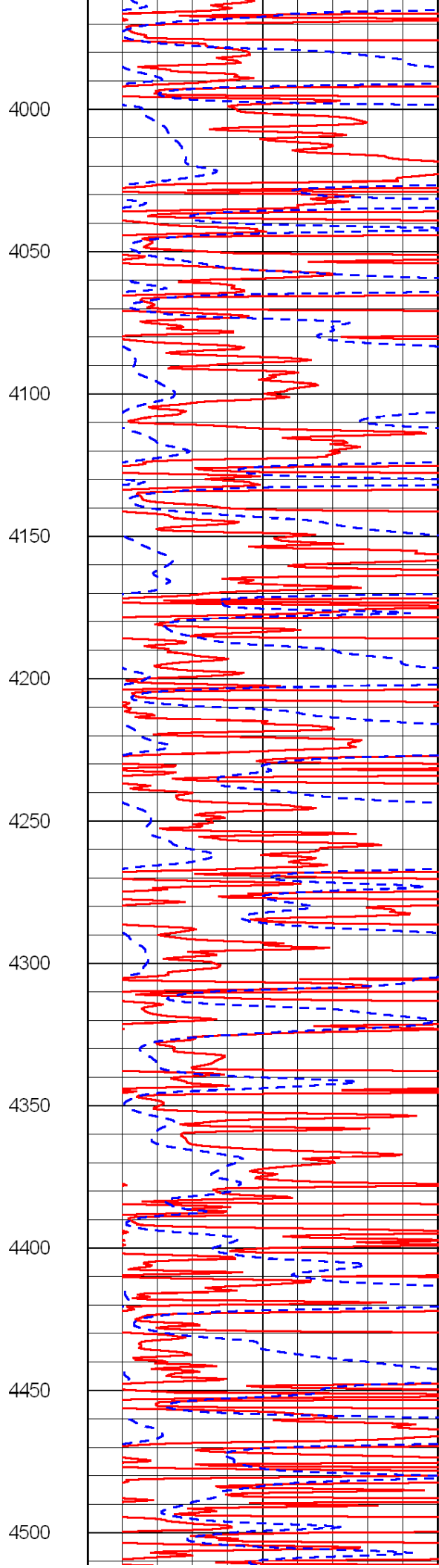
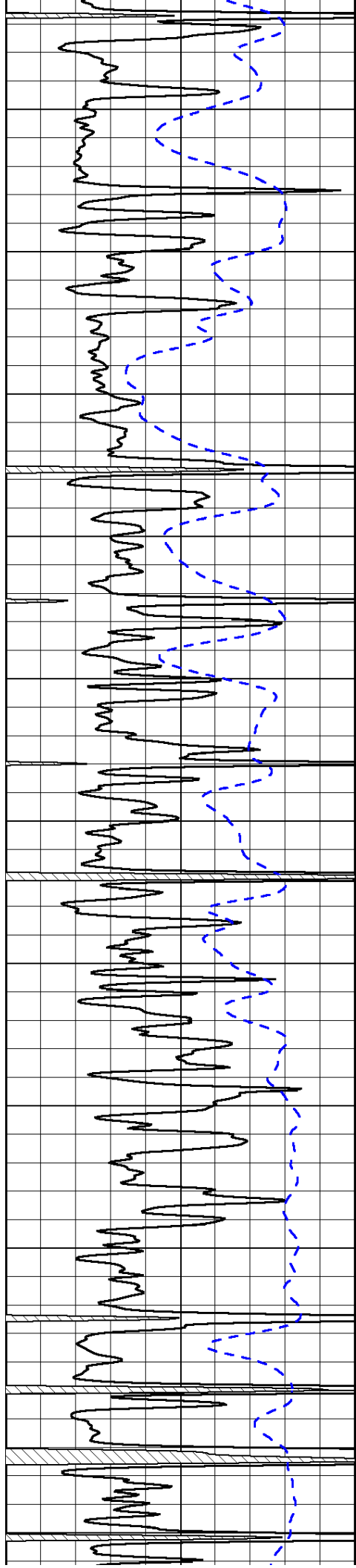


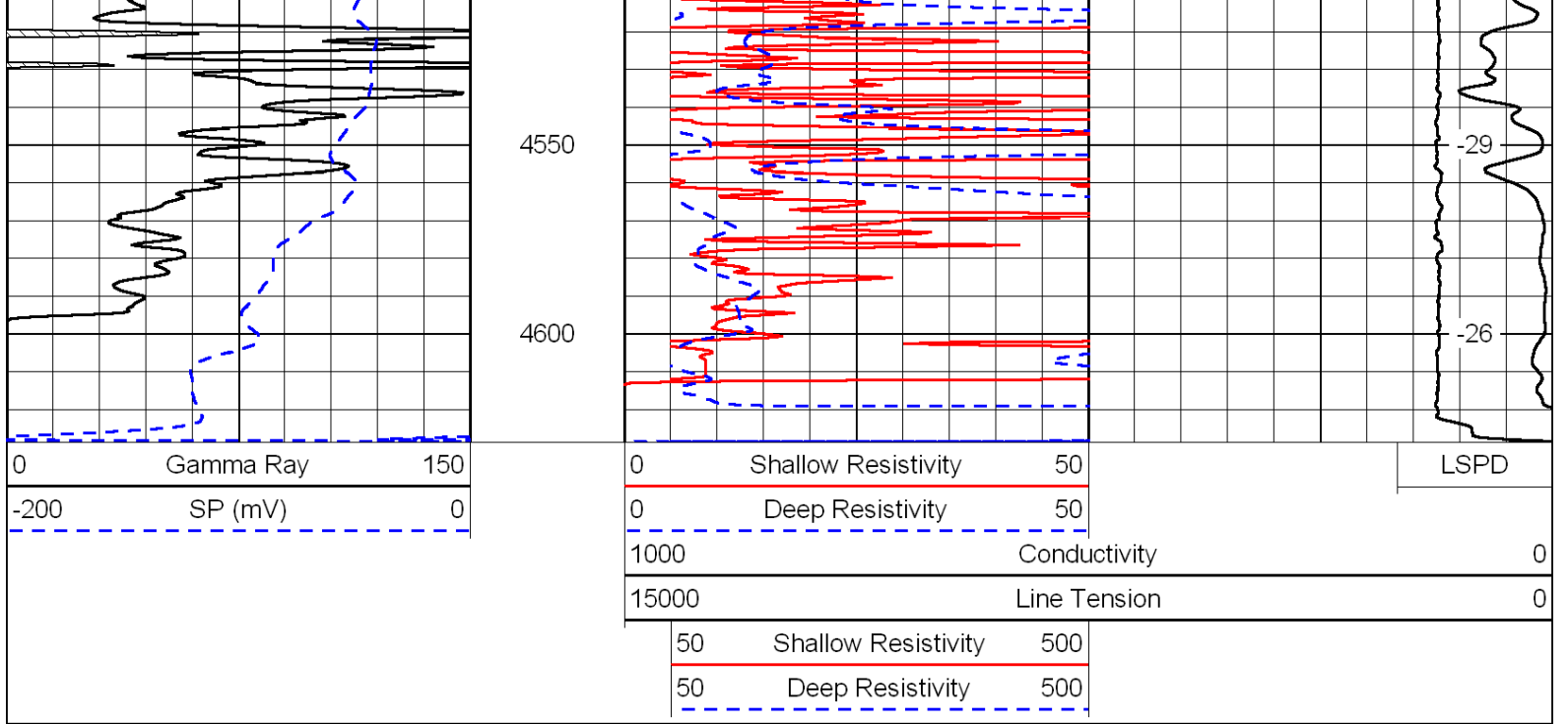




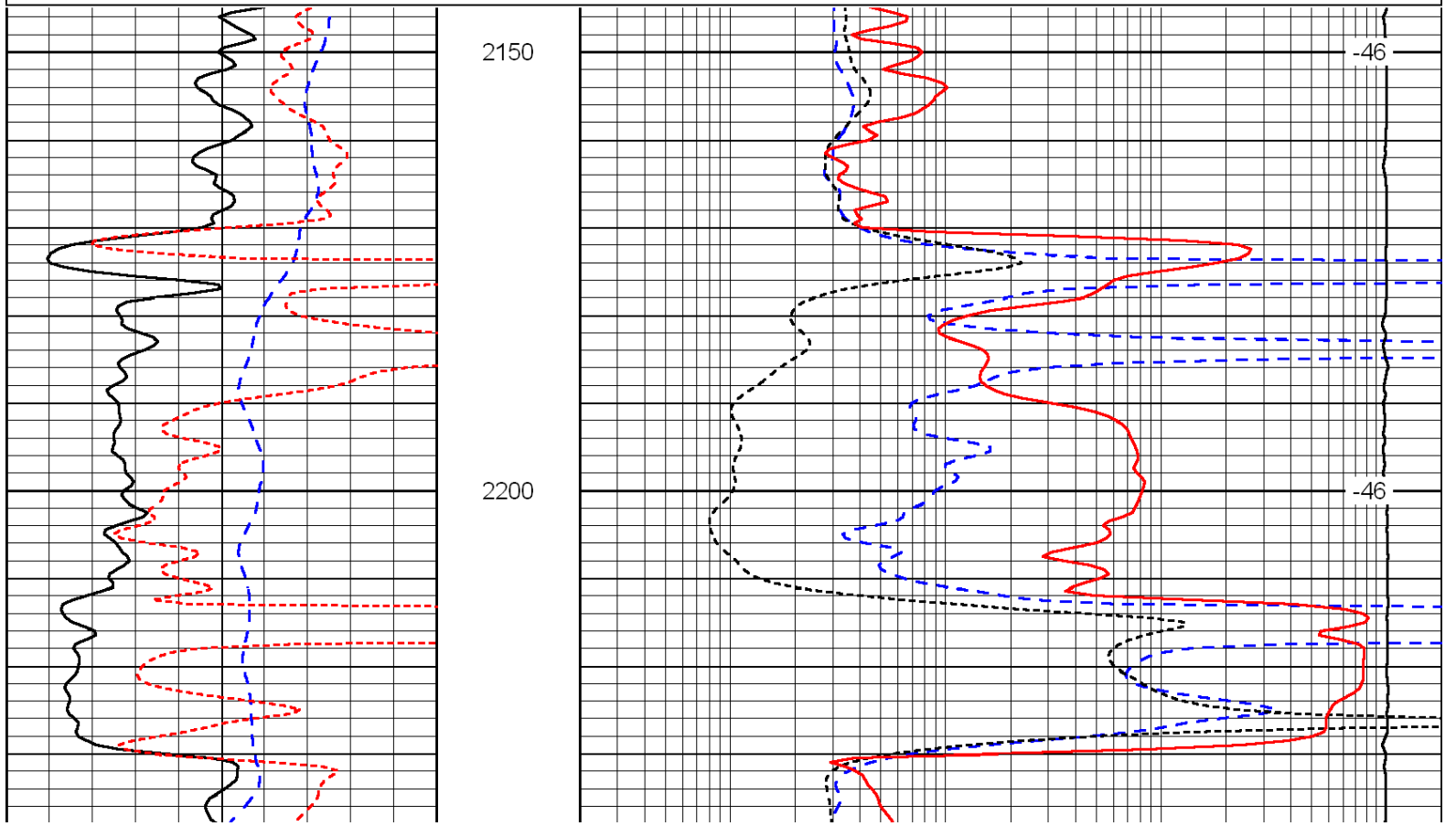
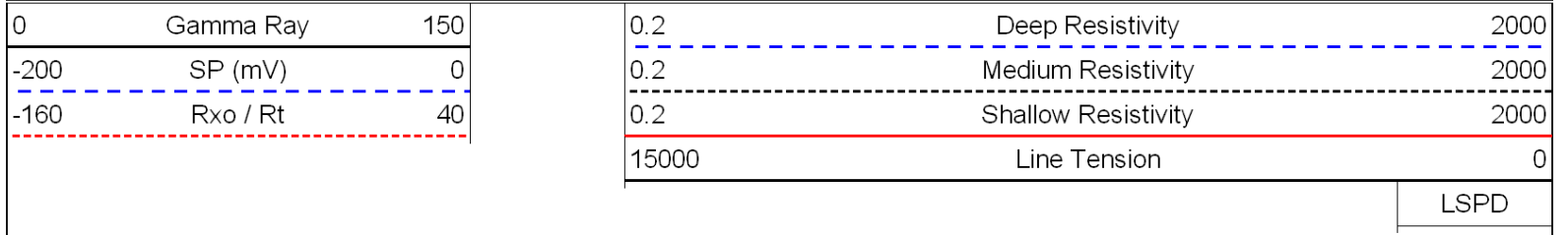


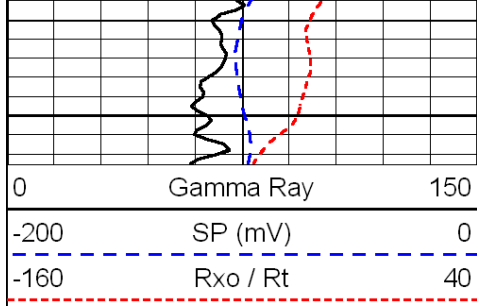




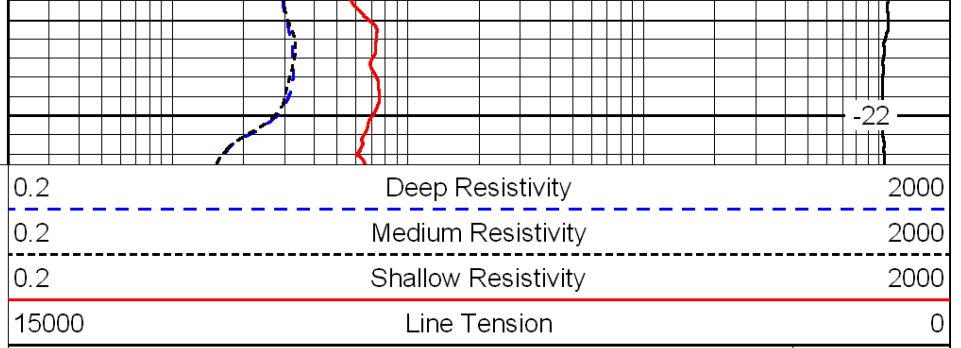


Database File: c:\warrior\data\flatirons_conner no. 14-27\flatironshd.db
 Dataset Pathname: DIL/fistk
 Presentation Format: dil
 Dataset Creation: Tue Jun 14 11:25:05 2011
 Charted by: Depth in Feet scaled 1:240





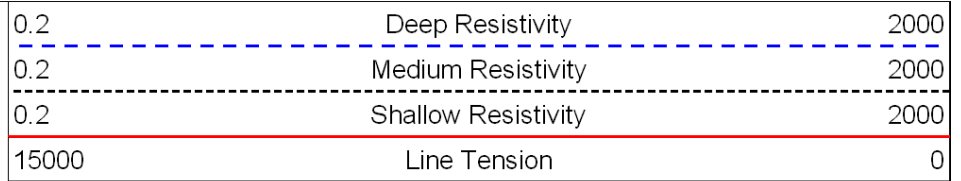
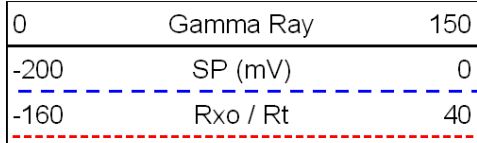
2250



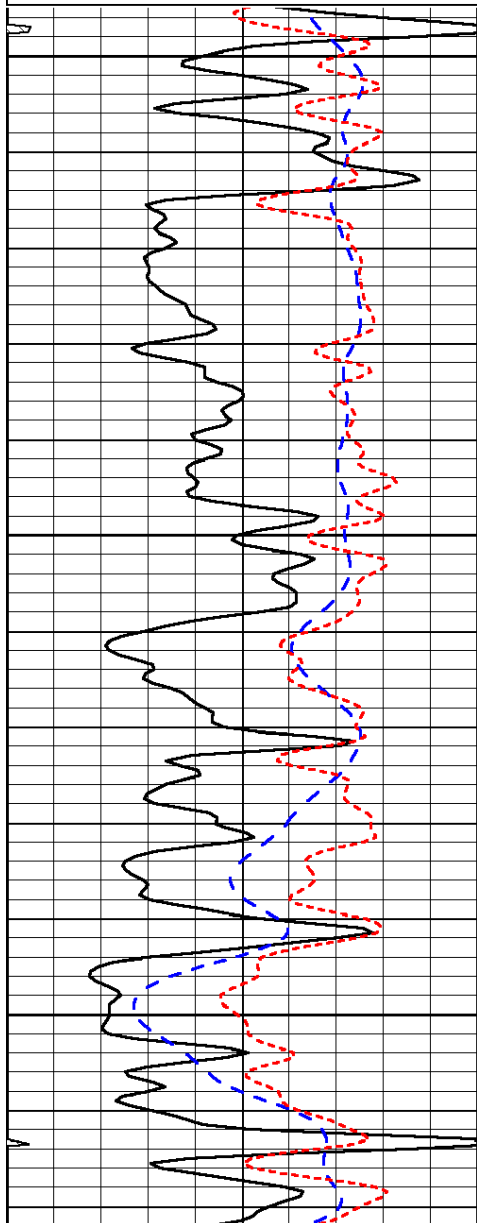
-22

LSPD

Database File: c:\warrior\data\flatirons_conner no. 14-27\flatironshd.db
 Dataset Pathname: DIL/fistk
 Presentation Format: dil
 Dataset Creation: Tue Jun 14 11:25:05 2011
 Charted by: Depth in Feet scaled 1:240



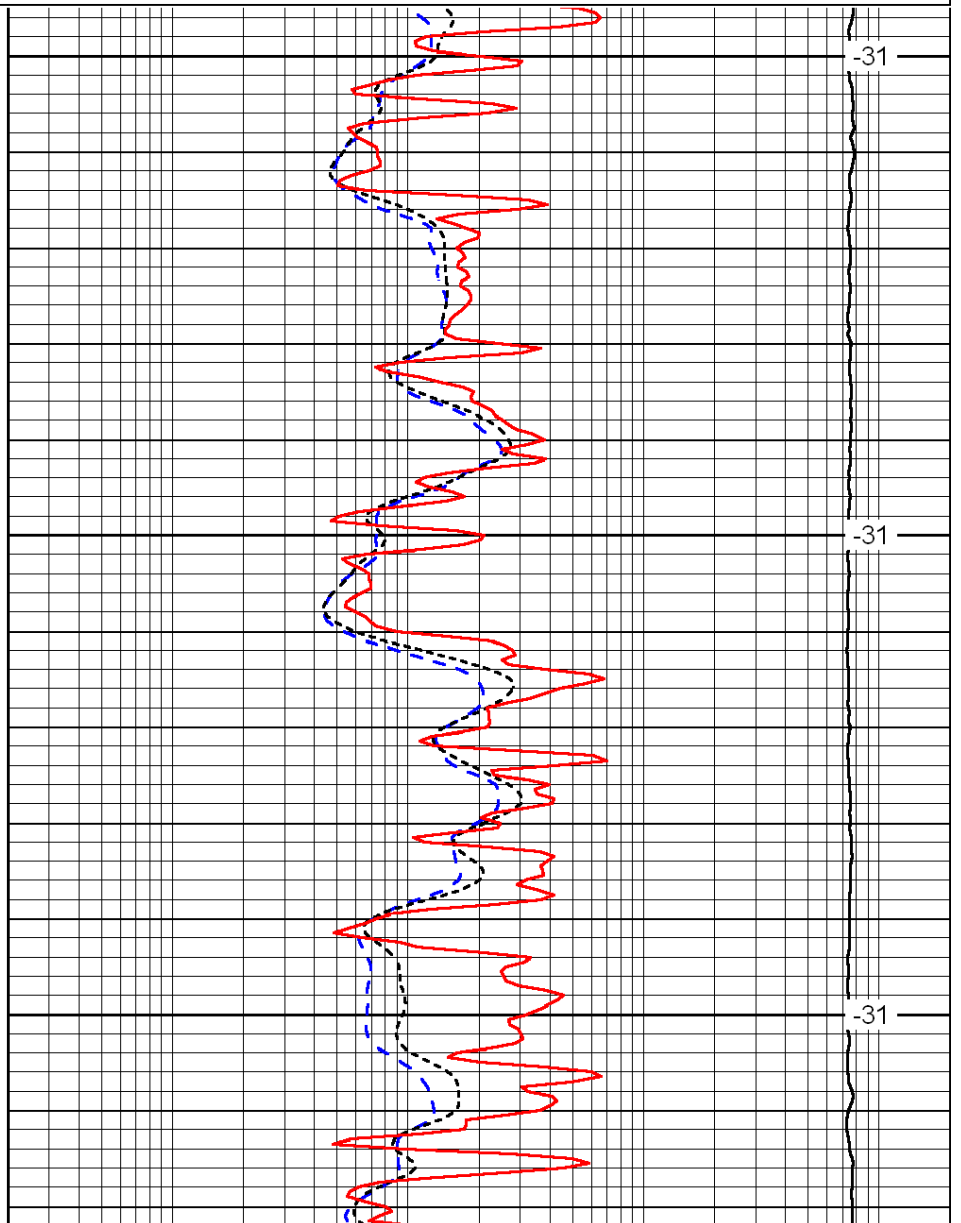
LSPD



3600

3650

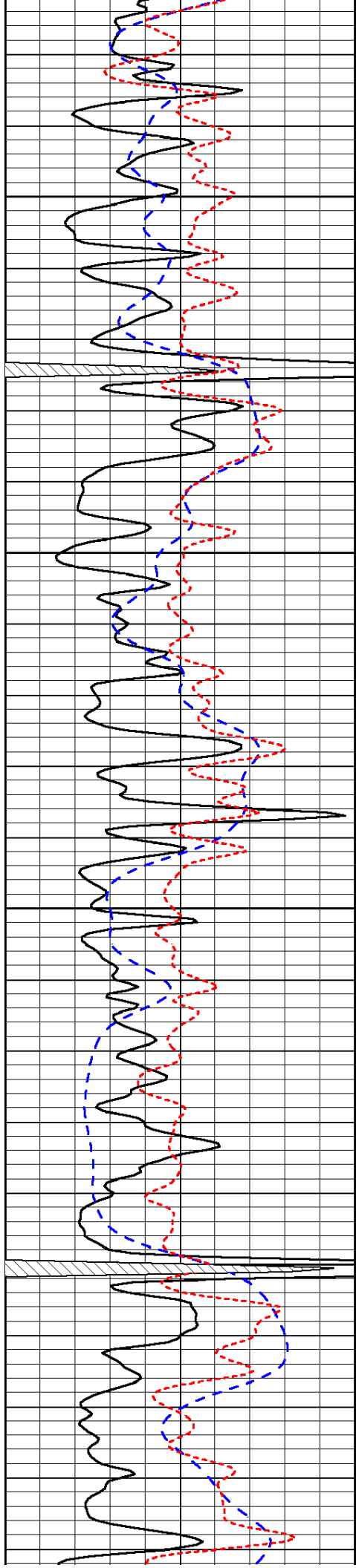
3700



-31

-31

-31

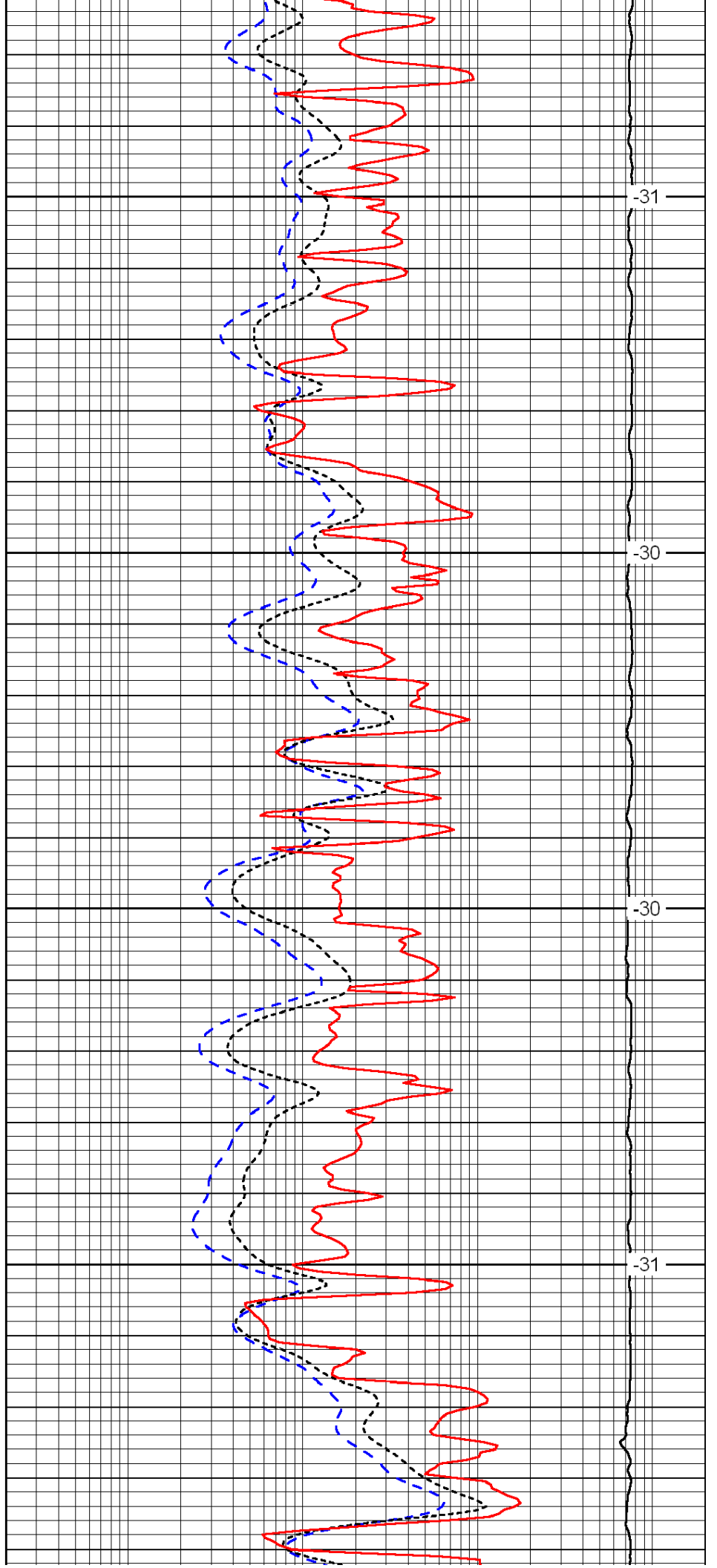


3750

3800

3850

3900

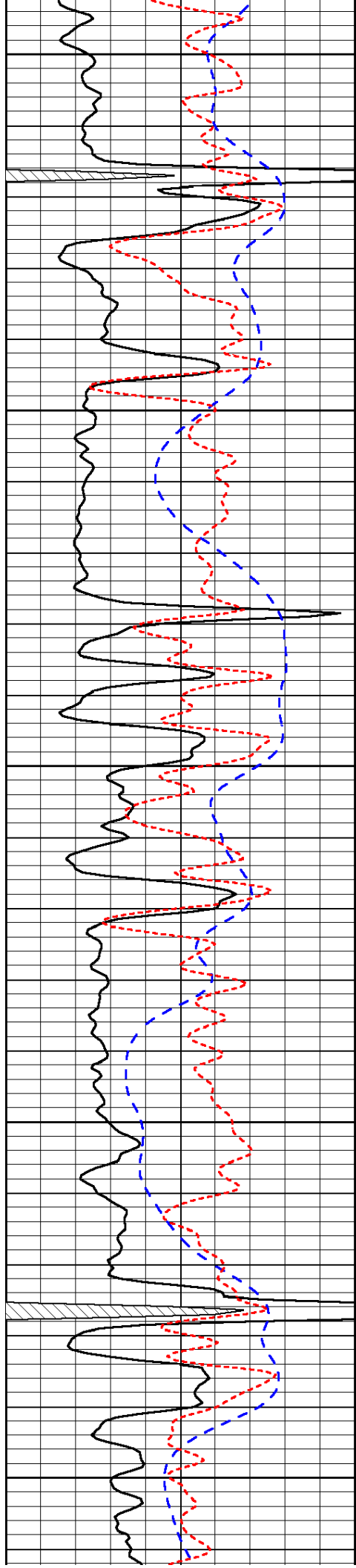


-31

-30

-30

-31



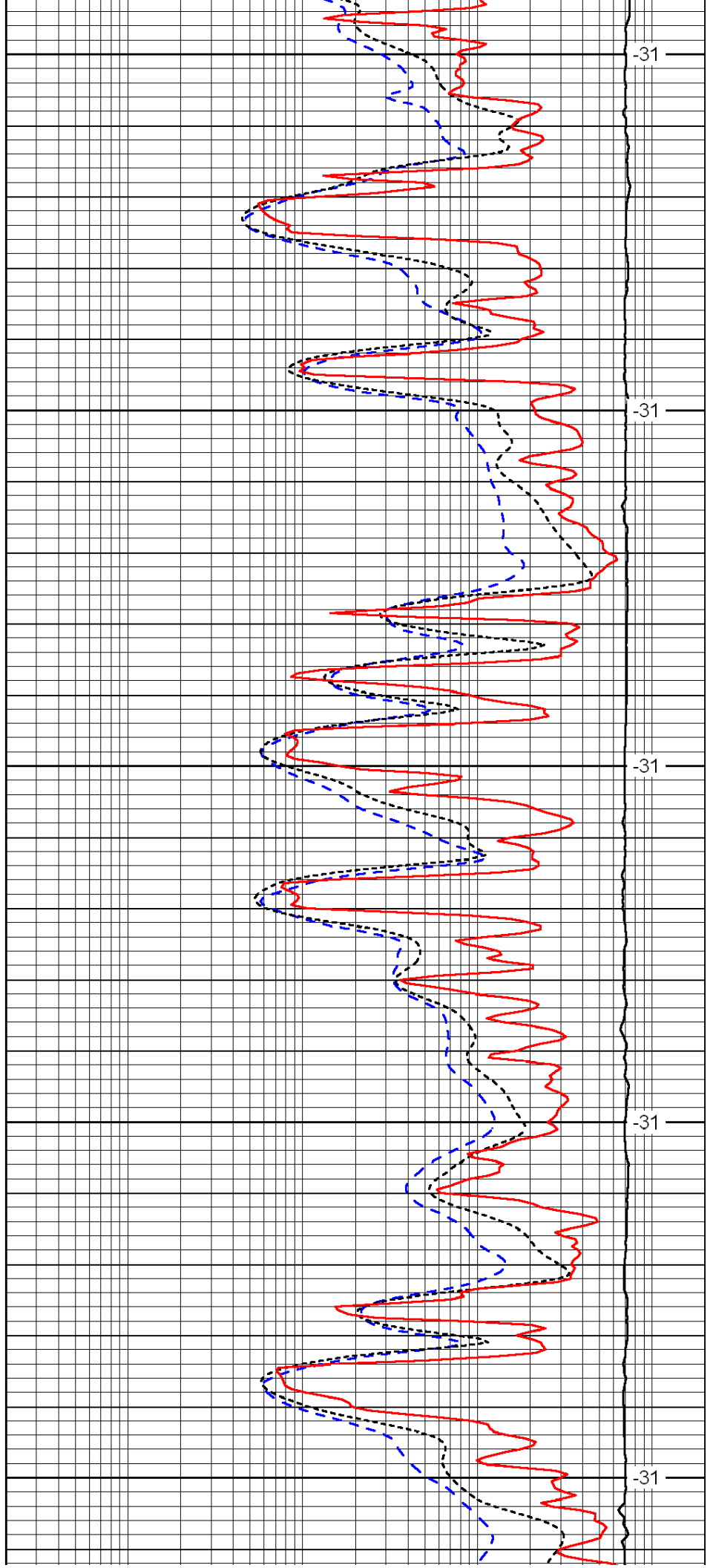
3950

4000

4050

4100

4150



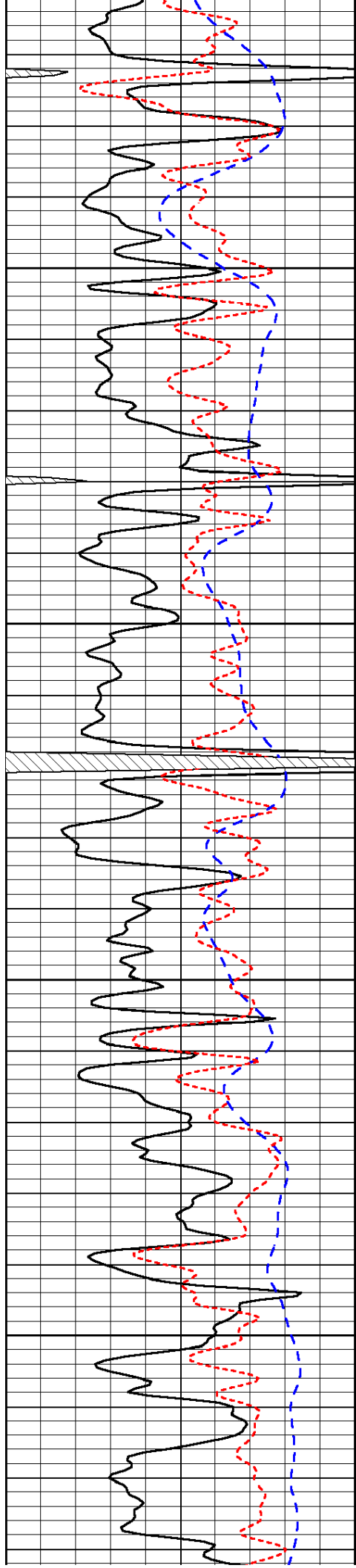
-31

-31

-31

-31

-31

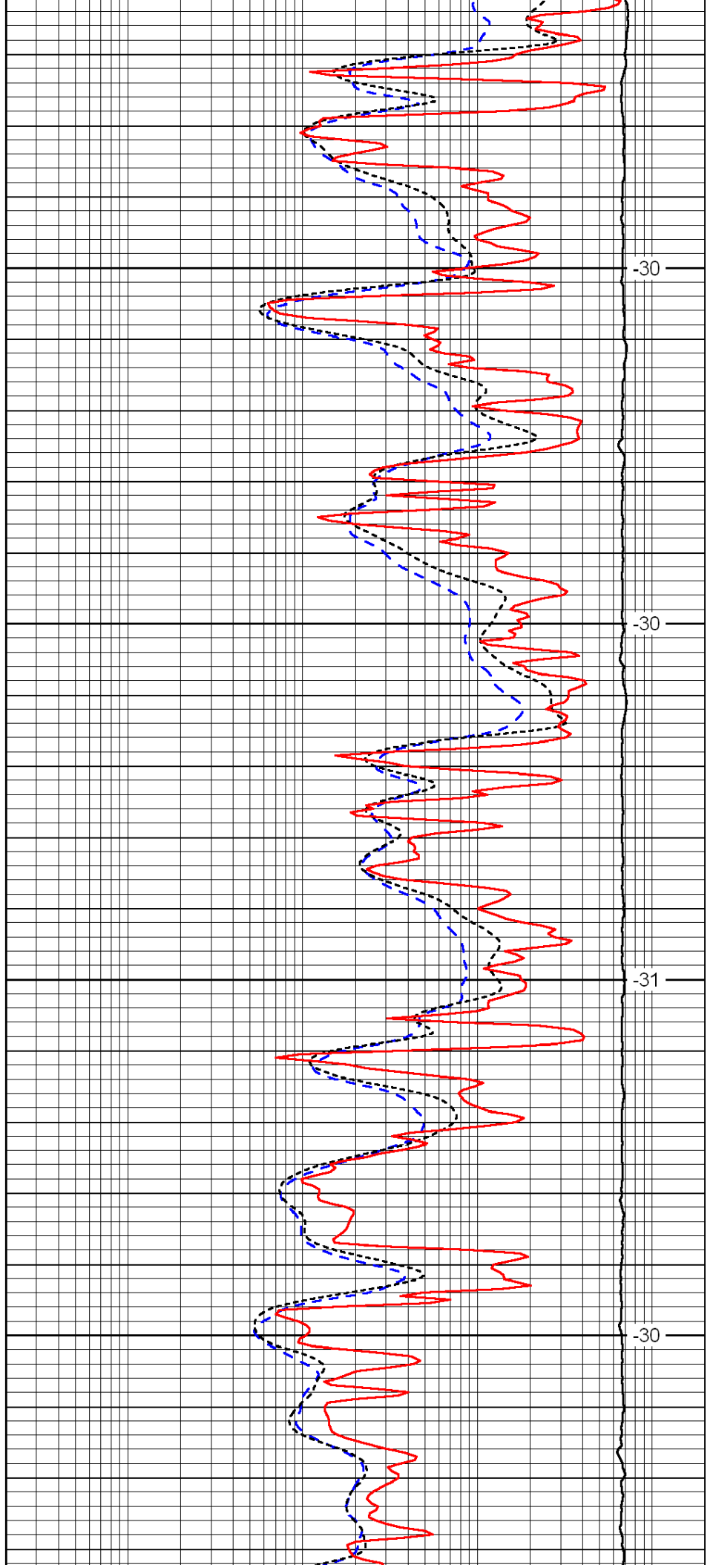


4200

4250

300

4350

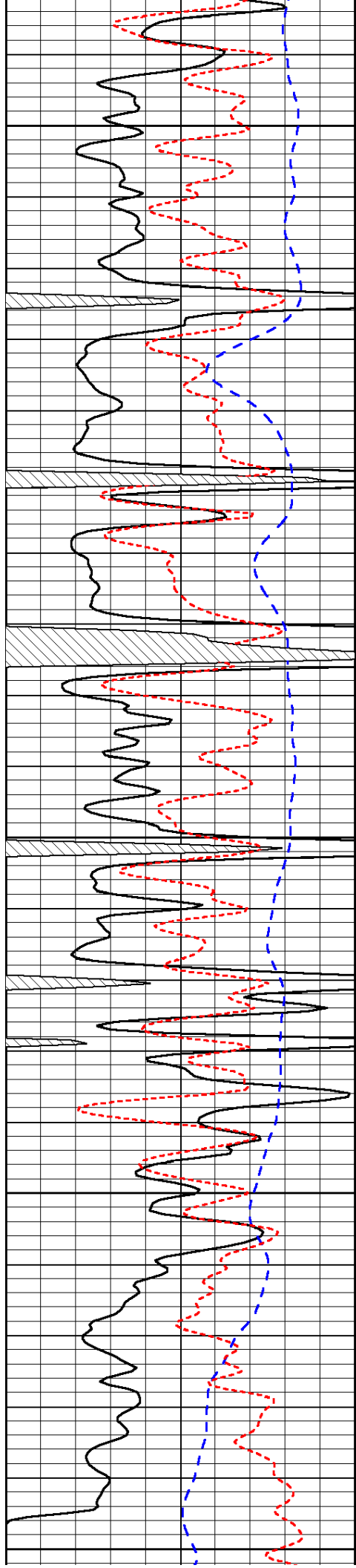


-30

-30

-31

-30



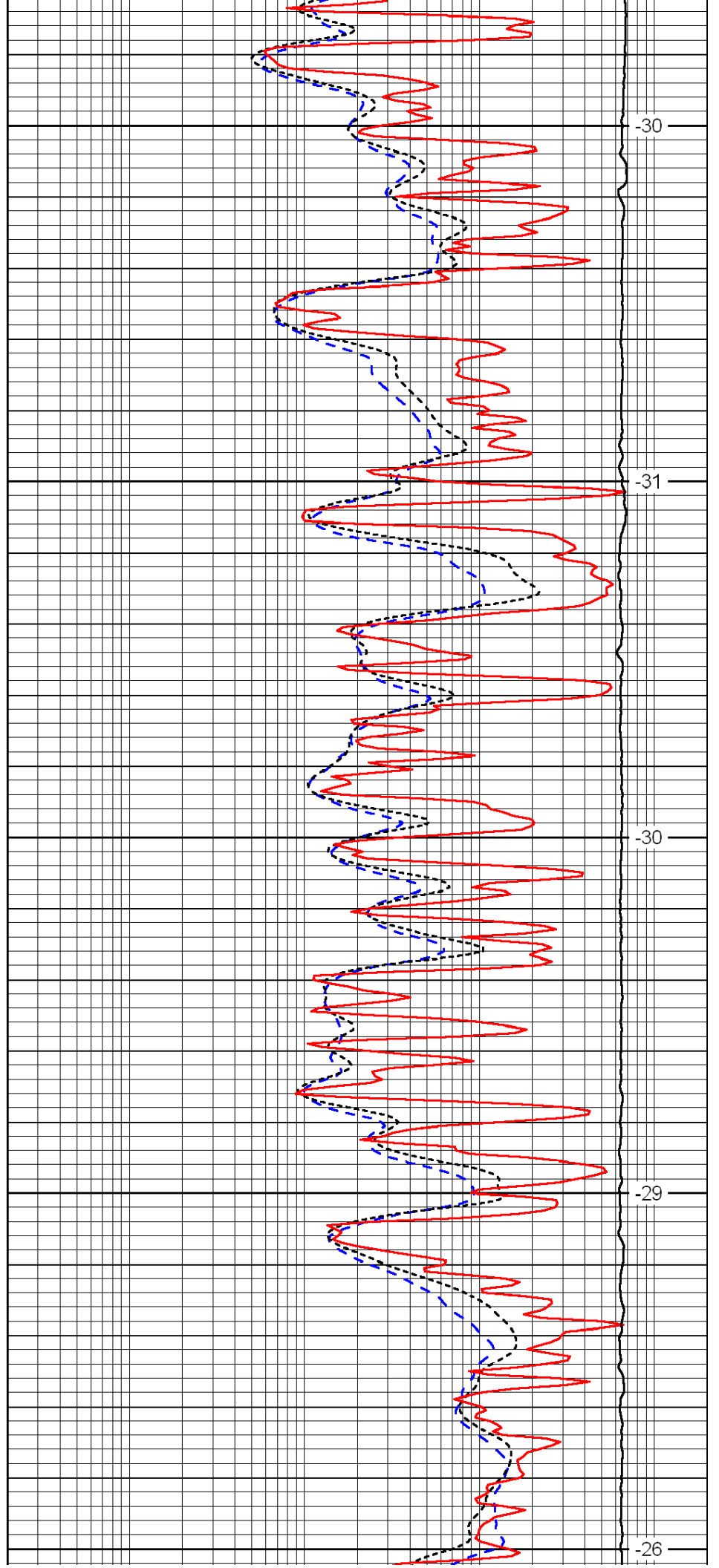
4400

4450

4500

4550

4600



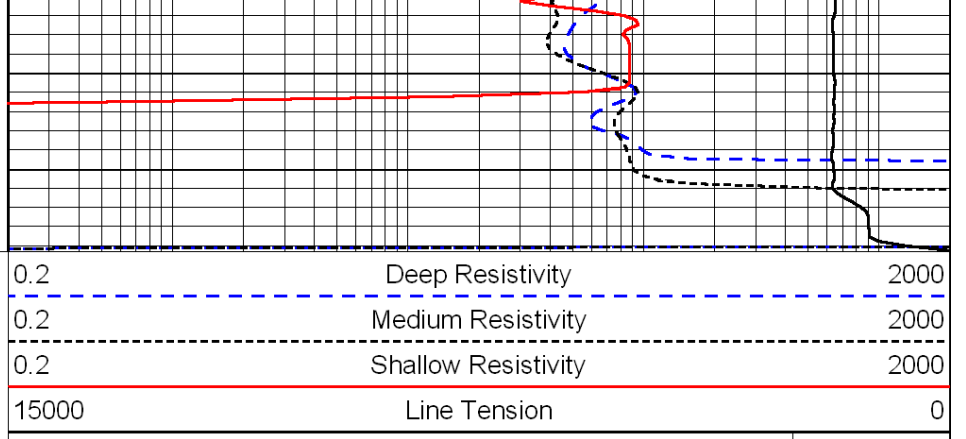
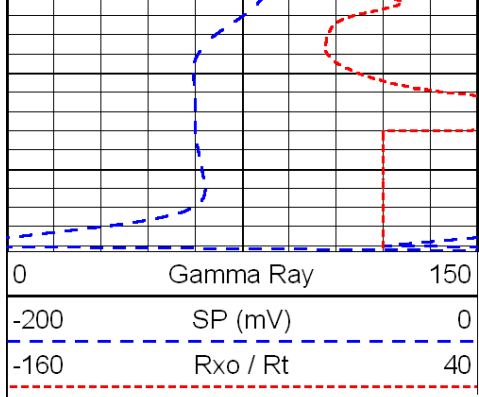
-30

-31

-30

-29

-26



LSPD