



# Dual Induction Log

DIGITAL LOG (785) 625-3858

API No.	15-015-23900-00-00	
Company	Range Oil Company, Inc.	
Well	Doran No. 1	
Field	Potwin	
County	Butler	State Kansas
Location	SE/4 - NE/4 - NE/4	
Sec: 9	Twp: 25 S	Rge: 3 E
Permanent Datum	Ground Level	Elevation 1357
Log Measured From	Kelly Bushing	10 Ft. Above Perm. Datum
Drilling Measured From	Kelly Bushing	K.B. 1367
		D.F. 1357
		G.L. 1357
		Elevation
		CNL/CDL

Date	5/27/2011
Run Number	One
Depth Driller	2810
Depth Logger	2810
Bottom Logged Interval	2809
Top Log Interval	200
Casing Driller	8.625 @ 224
Casing Logger	220
Bit Size	7.875
Type Fluid in Hole	Chemical
Salinity, ppm CL	700
Density / Viscosity	9.2 50
pH / Fluid Loss	9.0 9.8
Source of Sample	Flowline
Rm @ Meas. Temp	2.50 @ 68
Rmf @ Meas. Temp	1.88 @ 68
Rmc @ Meas. Temp	3.38 @ 68
Source of Rmf / Rmc	Charts
Rm @ BHT	1.63 @ 104
Operating Rig Time	3 Hours
Max Rec. Temp. F	104
Equipment Number	15
Location	Hays
Recorded By	B. Becker
Witnessed By	John Washburn

<<< Fold Here >>>

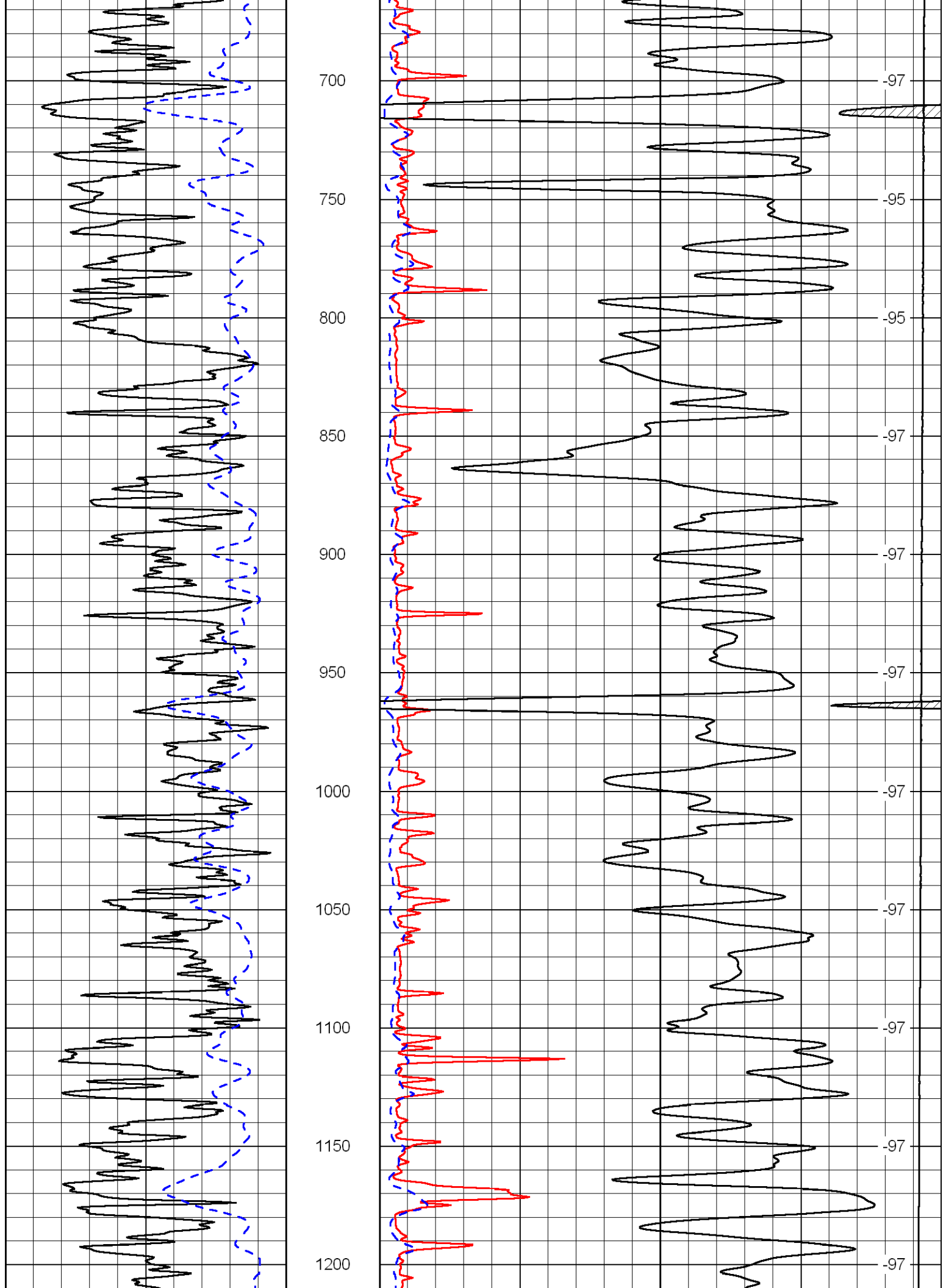
All interpretations are opinions based on inferences from electrical or other measurements and we cannot and do not guarantee the accuracy or correctness of any interpretation, and we shall not, except in the case of gross or willful negligence on our part, be liable or responsible for any loss, costs, damages, or expenses incurred or sustained by anyone resulting from any interpretation made by any of our officers, agents or employees. These interpretations are also subject to our general terms and conditions set out in our current Price Schedule.

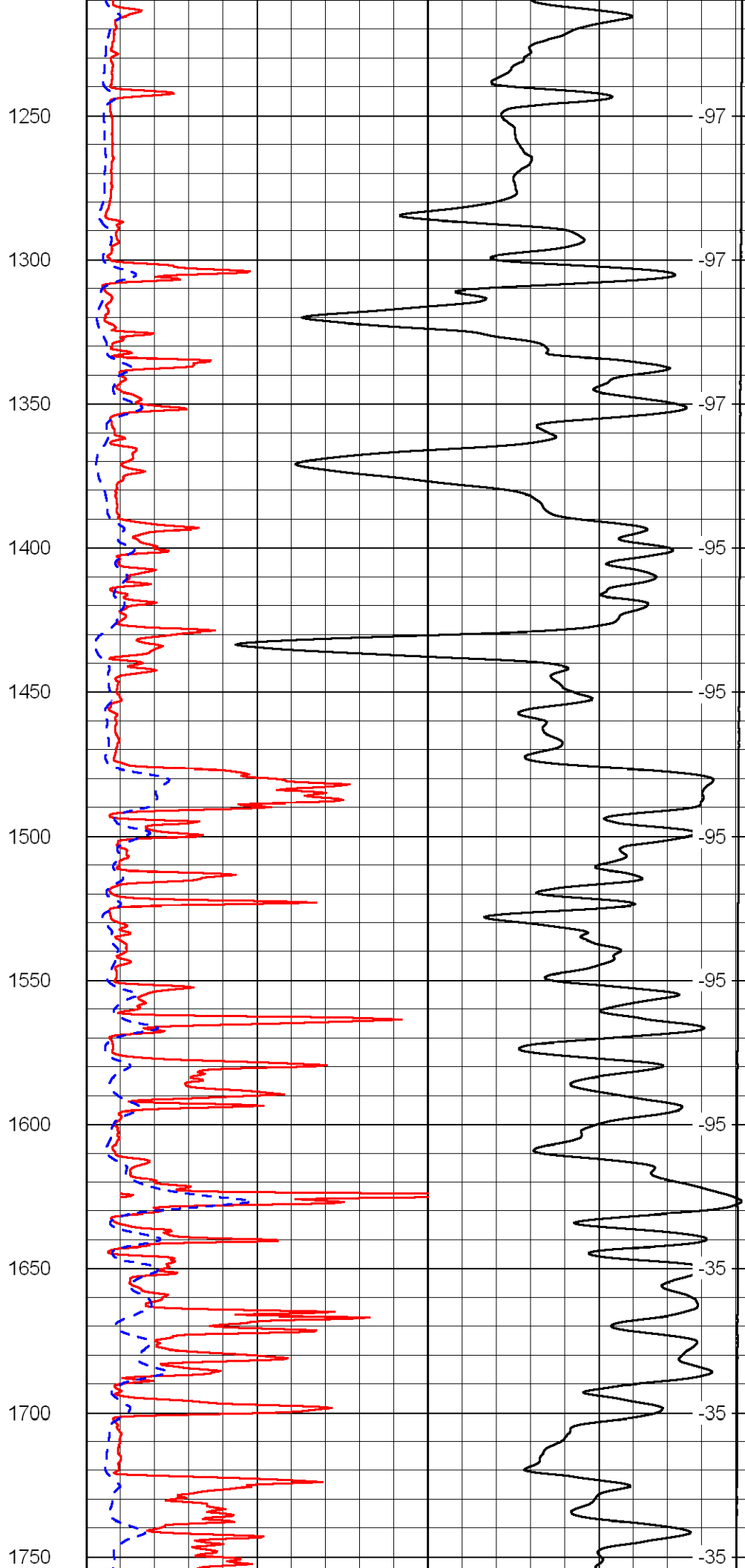
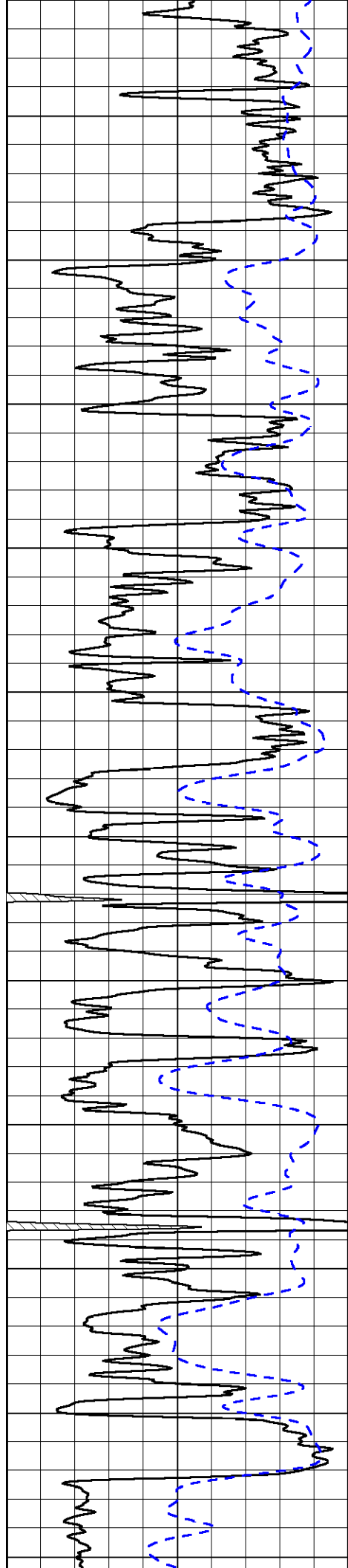
### Comments

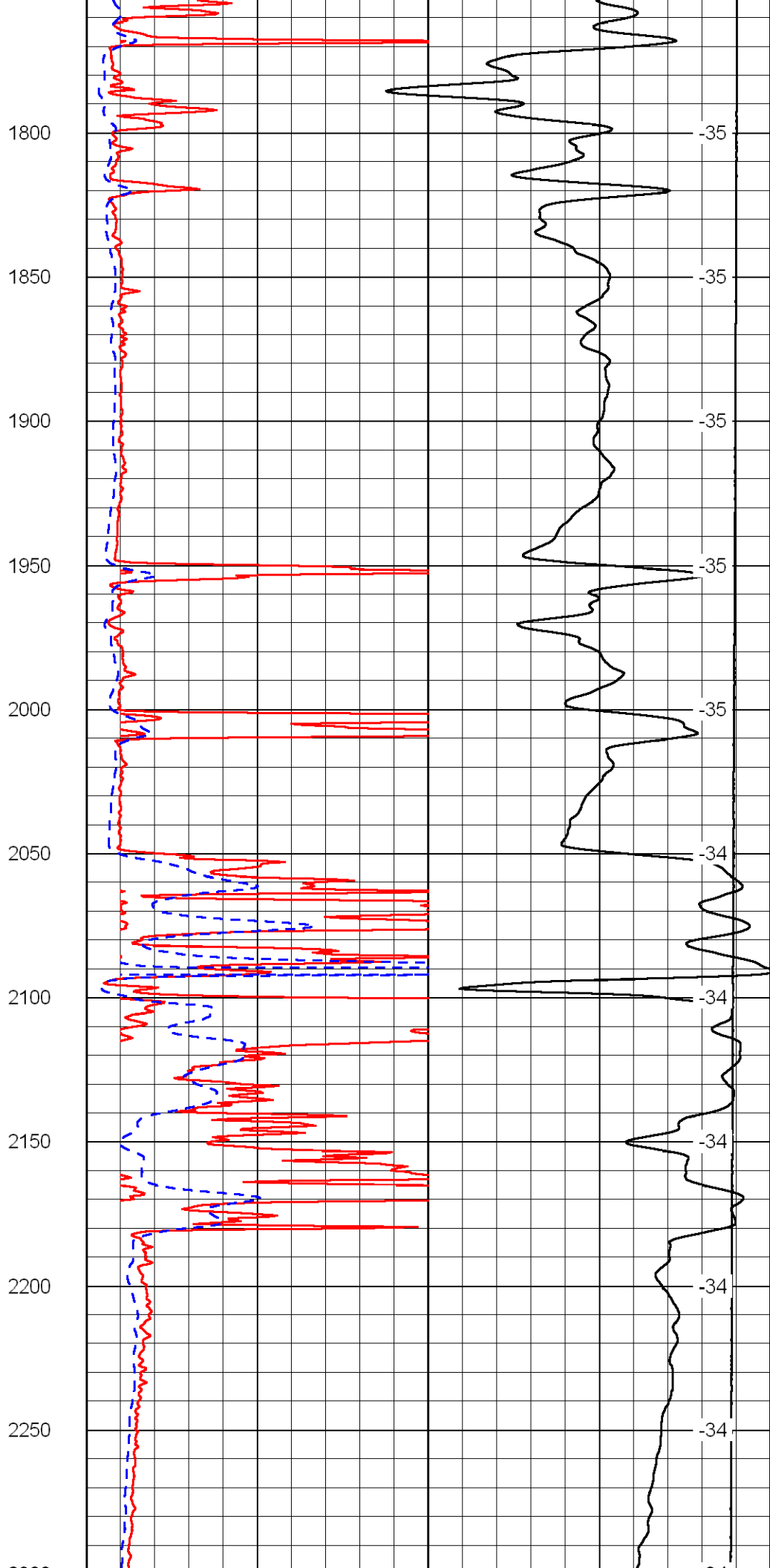
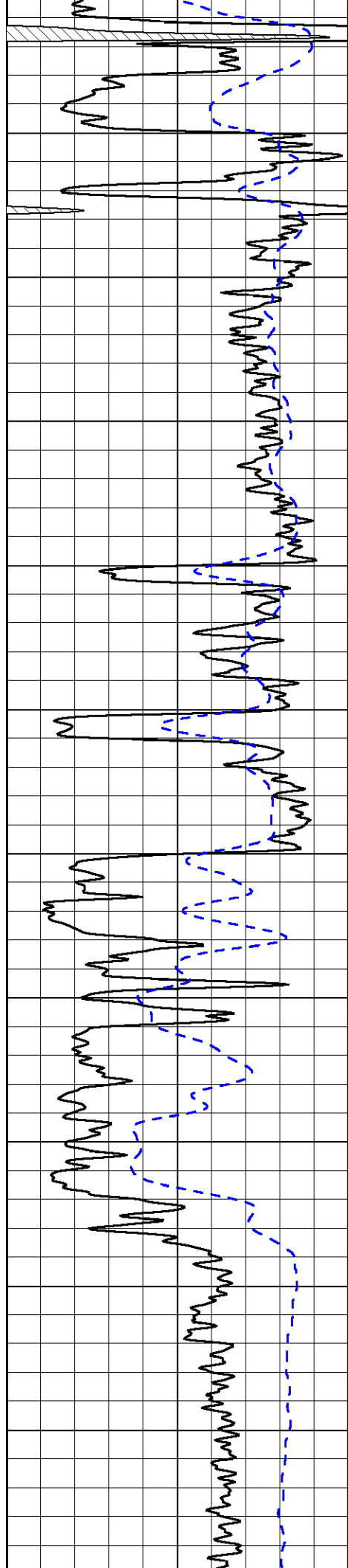
Thank you for using Log-Tech, Inc.  
 (785) 625-3858  
  
 Whitewater, Ks; 1/2 East to Butler Rd;  
 4 South to 50th Rd; 2 East to Meadowlark;  
 1/2 South; West into location

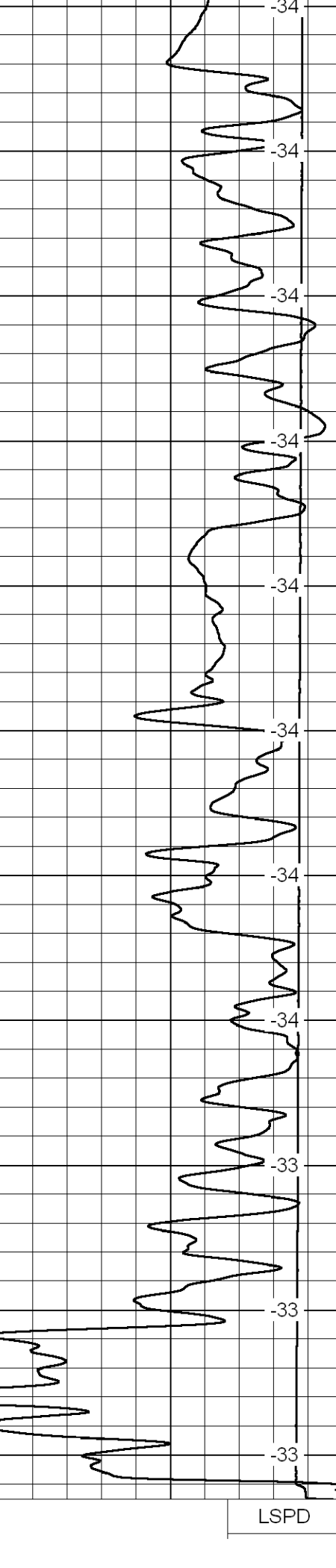
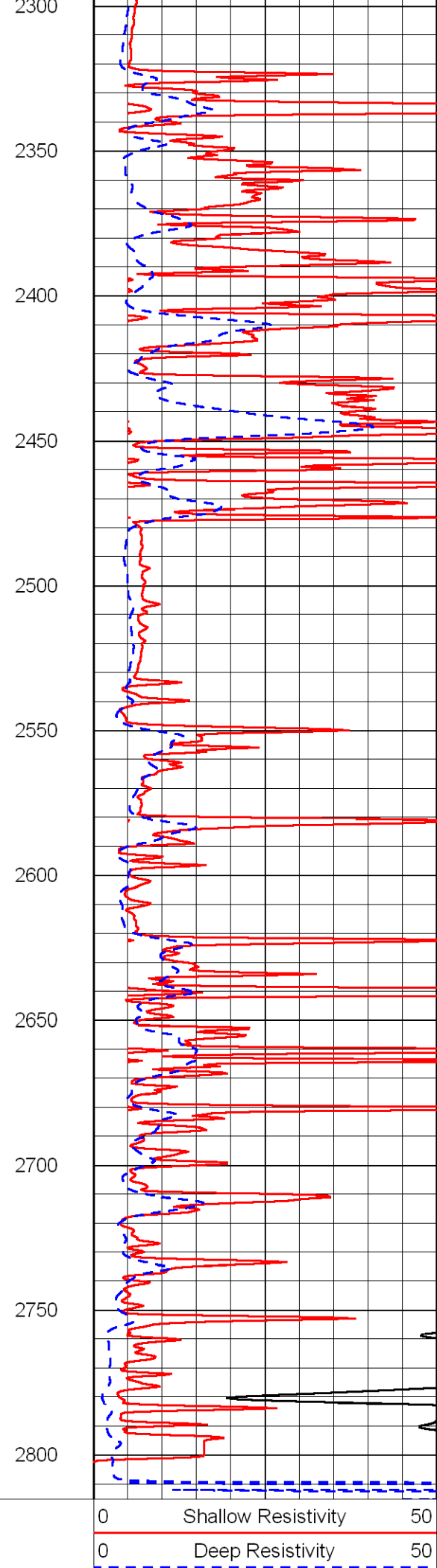
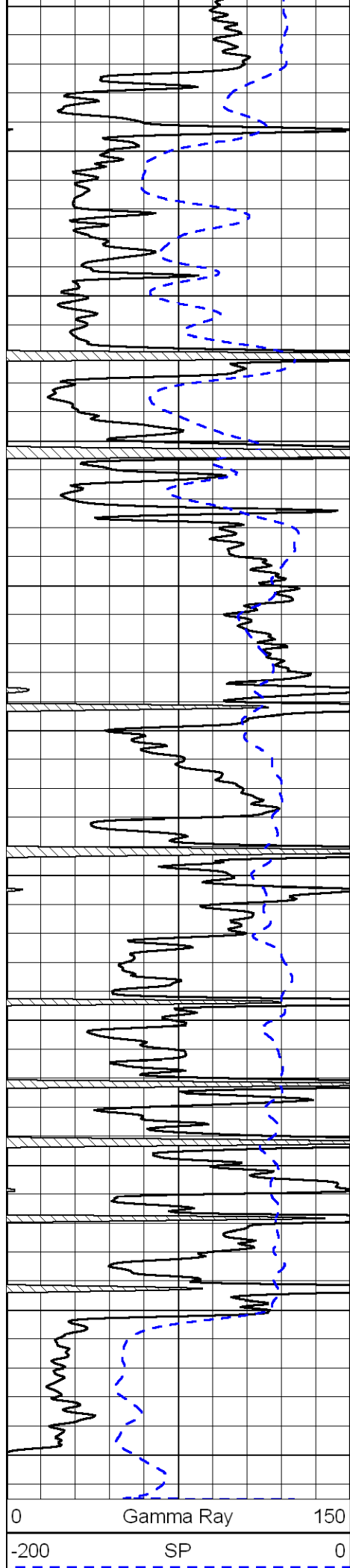
Database File: rangehd.db  
 Dataset Pathname: DIL/range  
 Presentation Format: dil2in  
 Dataset Creation: Wed Jun 01 10:19:01 2011  
 Charted by: Depth in Feet scaled 1:600









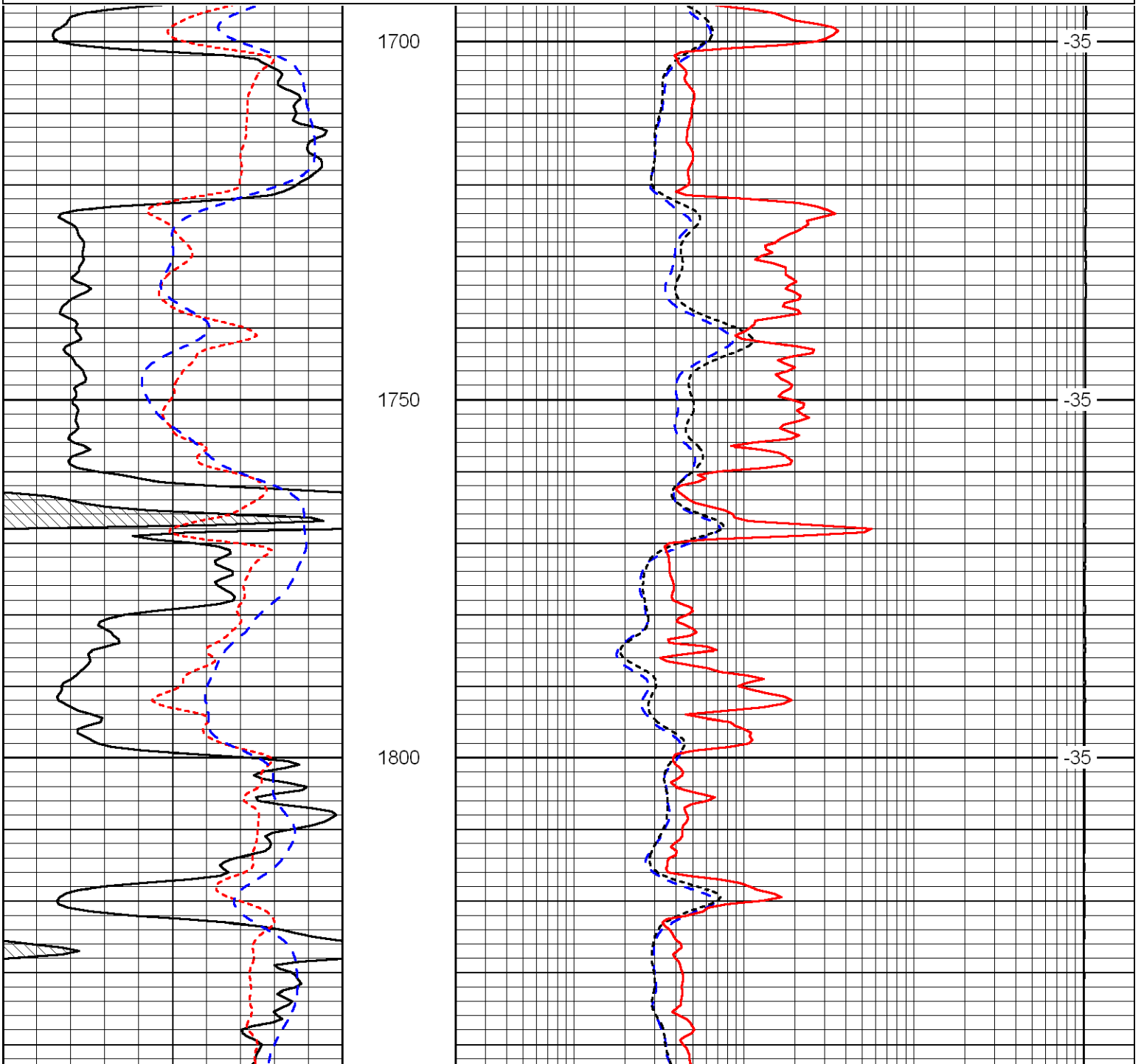


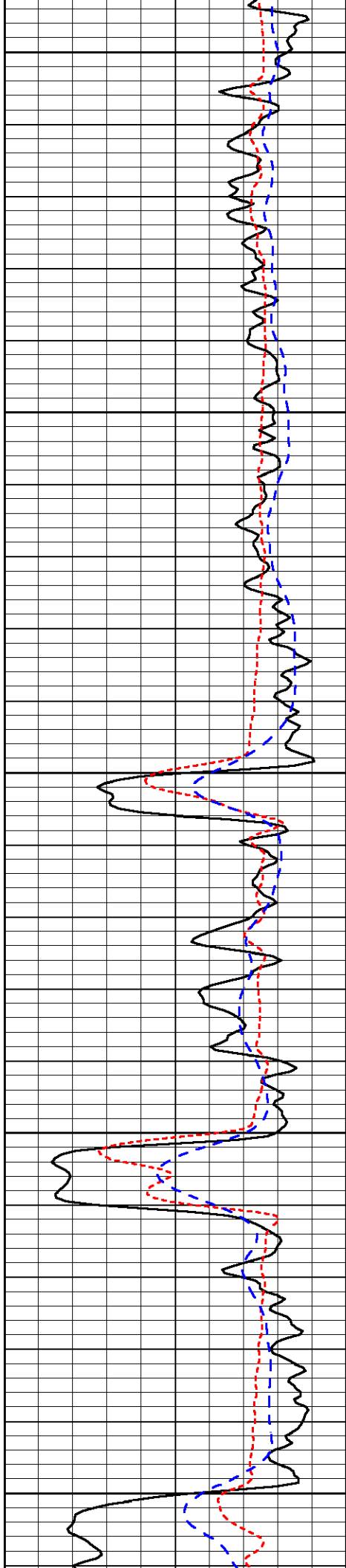
1000	Conductivity	0
15000	Line Tension	0
50	Shallow Resistivity	500
50	Deep Resistivity	500

Database File: rangehd.db  
 Dataset Pathname: DIL/range  
 Presentation Format: dil  
 Dataset Creation: Wed Jun 01 10:19:01 2011  
 Charted by: Depth in Feet scaled 1:240

0	Gamma Ray	150	0.2	Deep Resistivity	2000
-160	RXO/RT	40	0.2	Medium Resistivity	2000
-200	SP	0	0.2	Shallow Resistivity	2000
			10000	Line Tension	0

LSPD





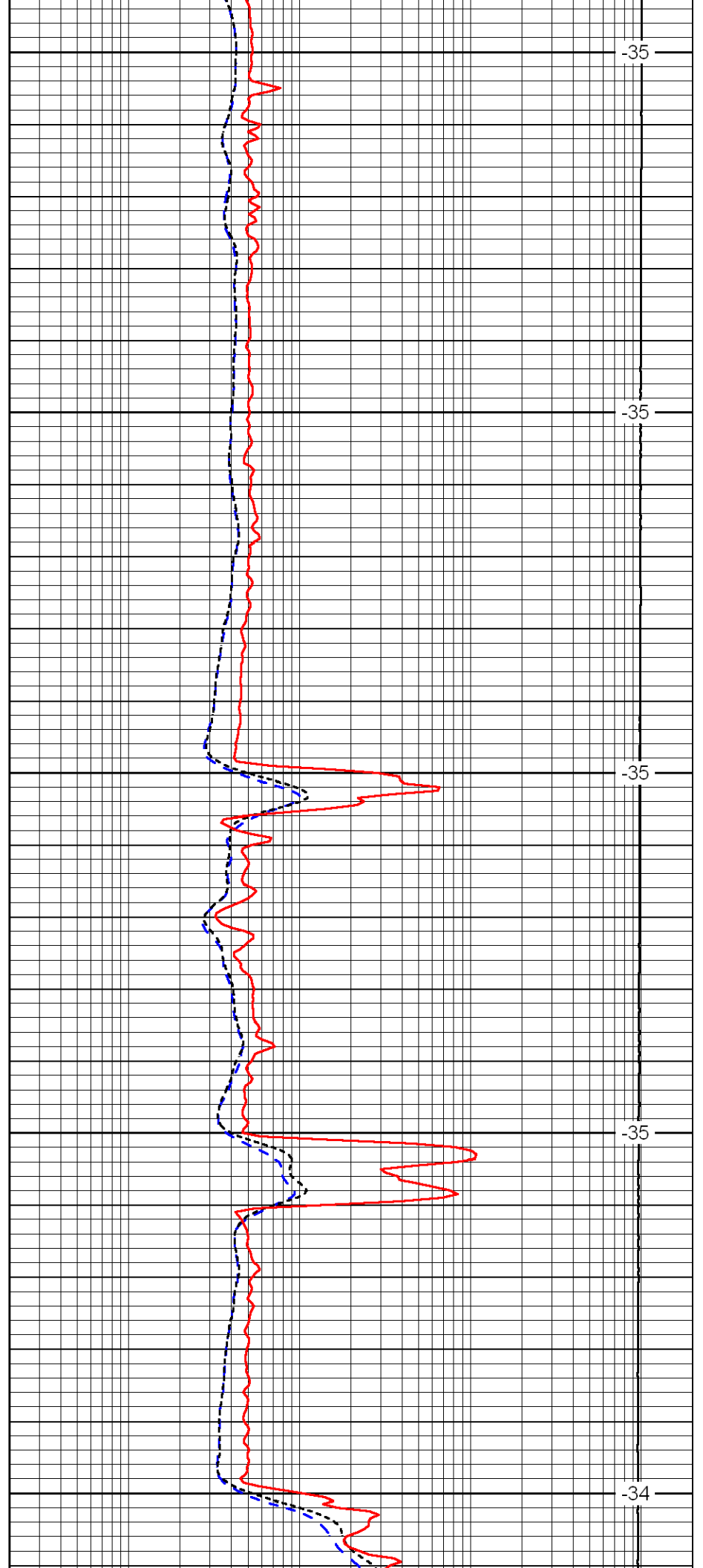
1850

1900

1950

2000

2050



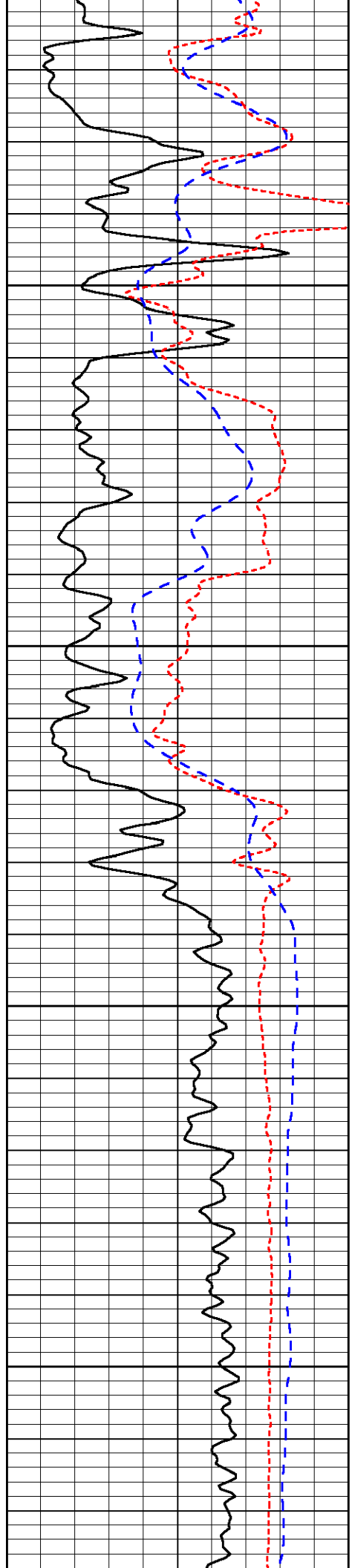
-35

-35

-35

-35

-34

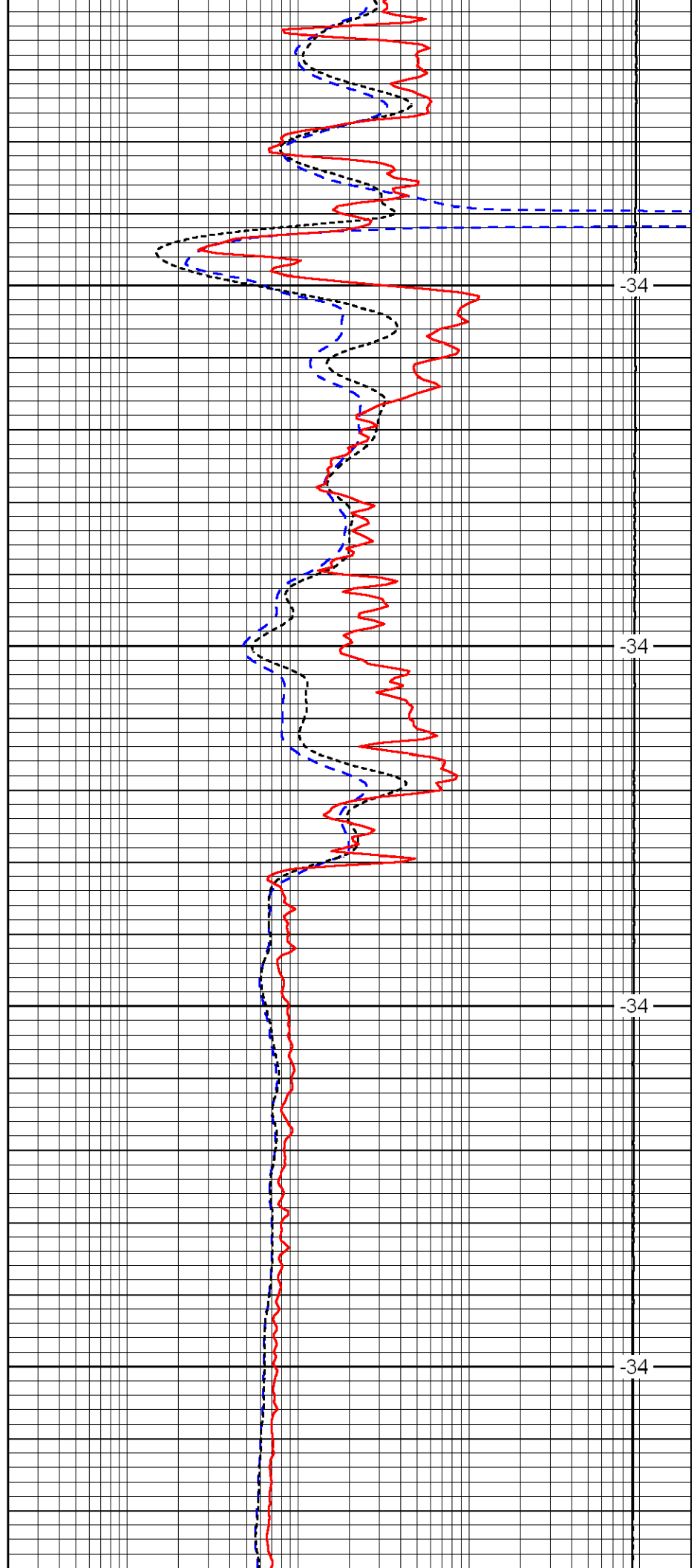


2100

2150

2200

2250

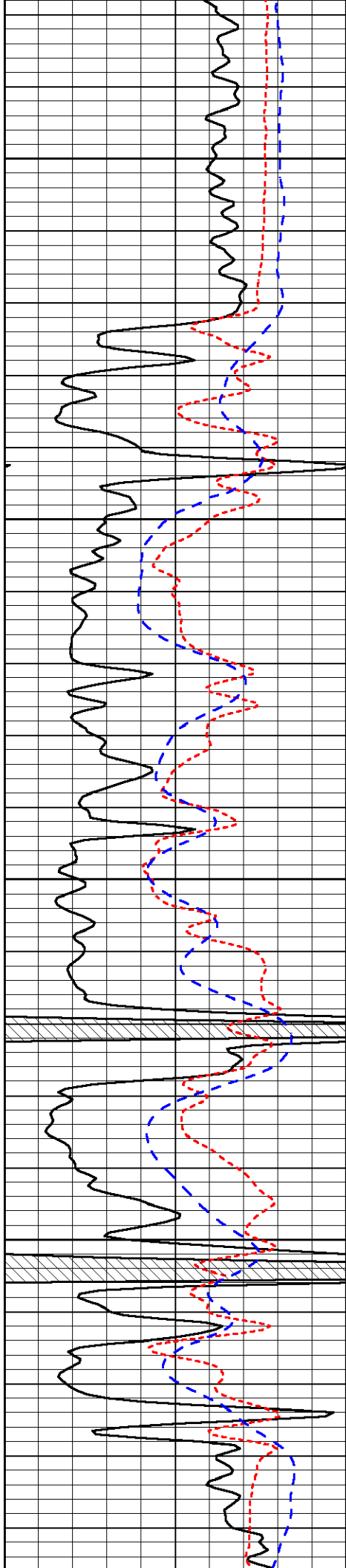


-34

-34

-34

-34

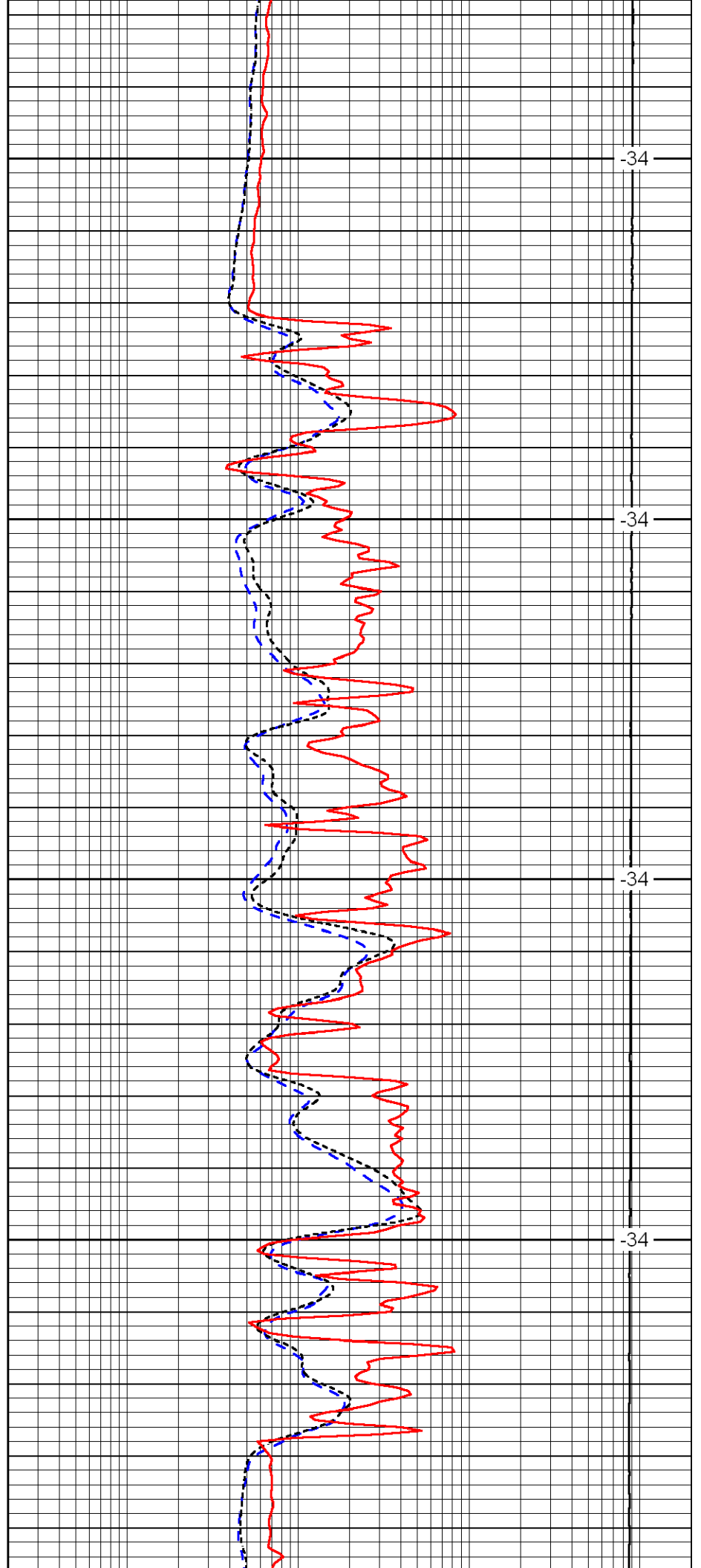


2300

2350

2400

2450

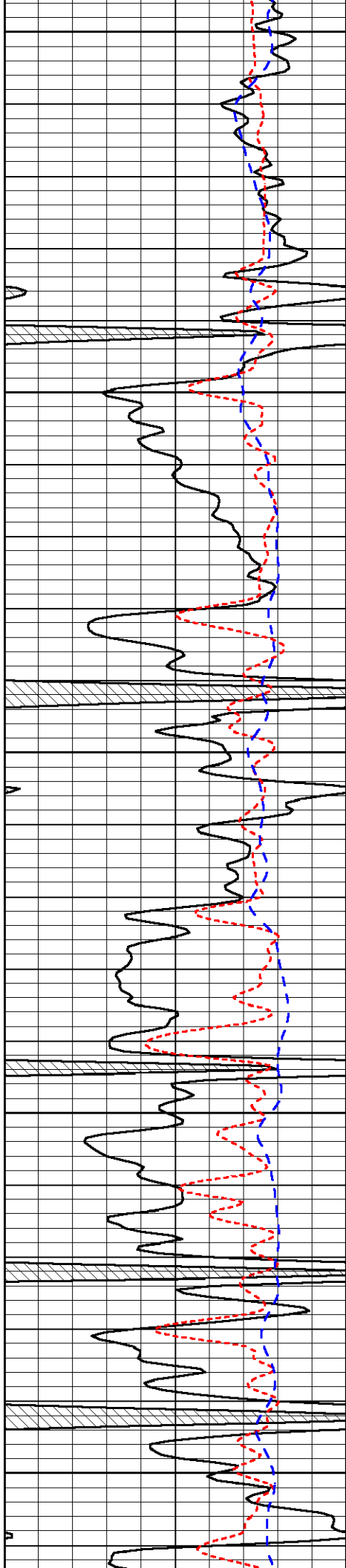


-34

-34

-34

-34



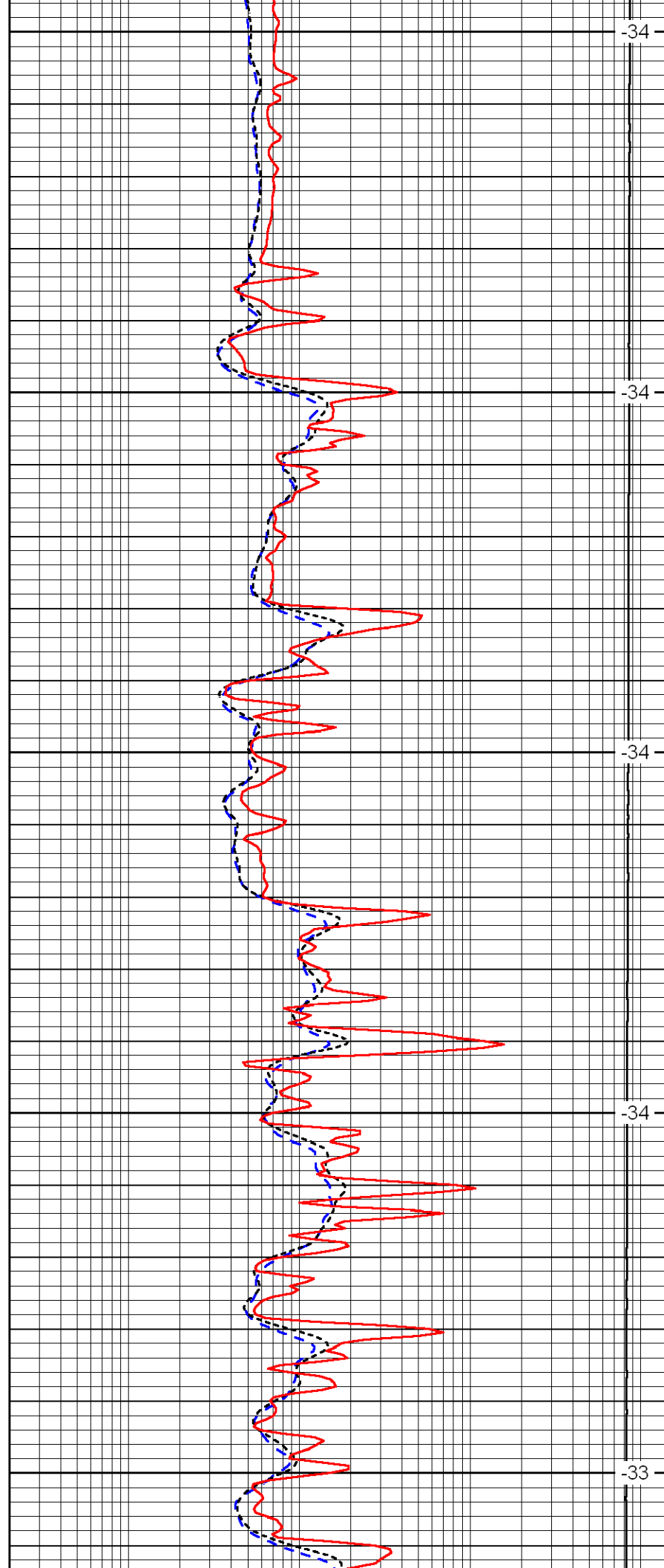
2500

2550

2600

2650

2700



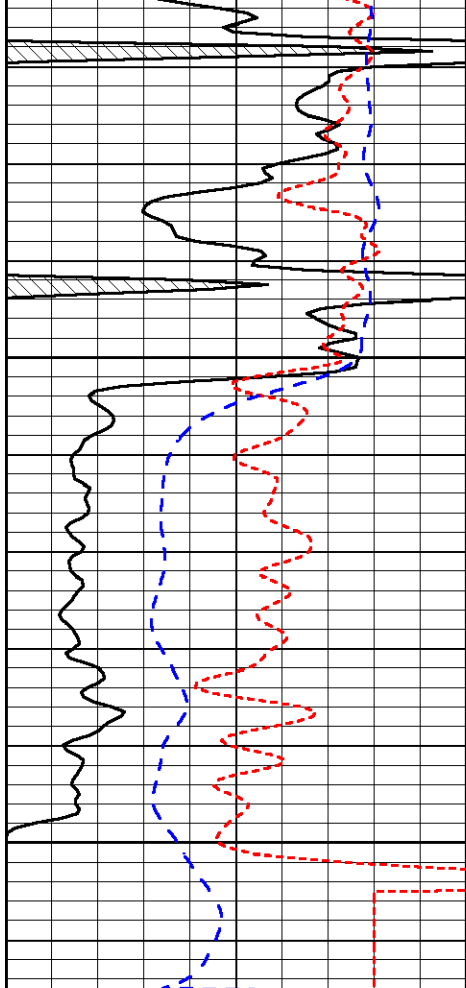
-34

-34

-34

-34

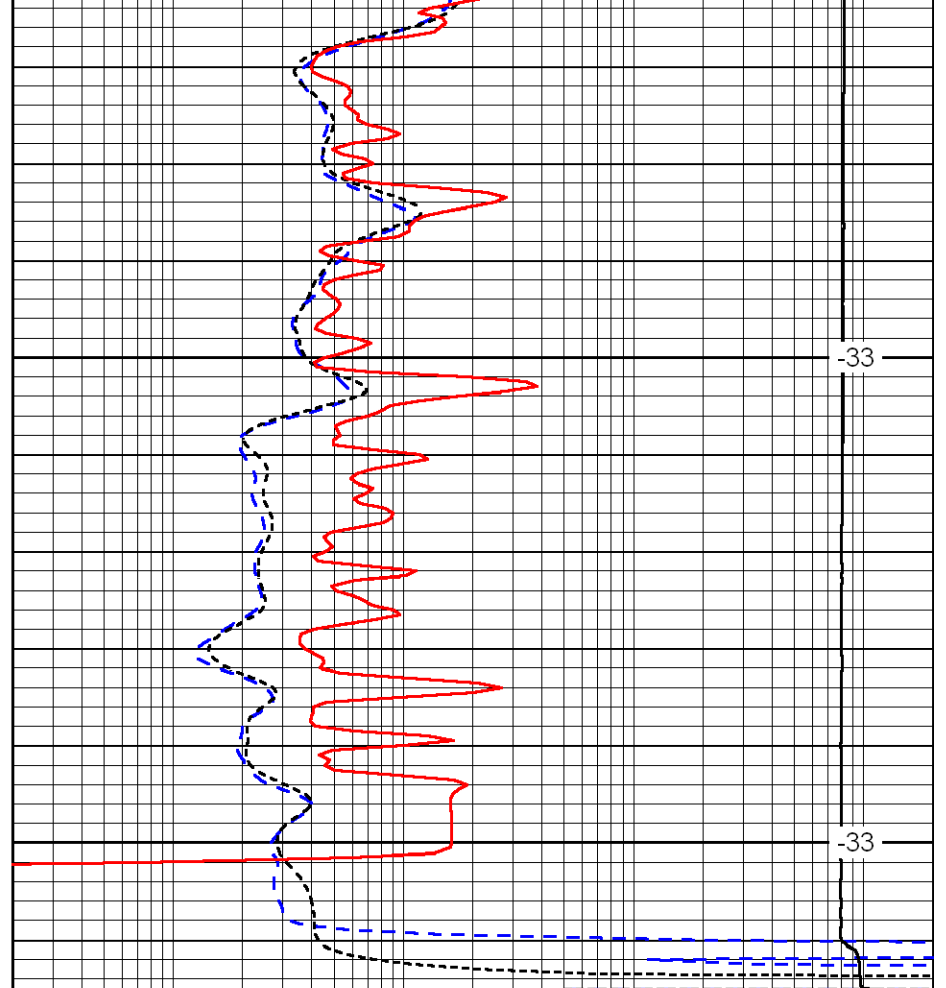
-33



0	Gamma Ray	150
-160	RXO/RT	40
-200	SP	0

2750

2800



-33

-33

0.2	Deep Resistivity	2000
0.2	Medium Resistivity	2000
0.2	Shallow Resistivity	2000
10000	Line Tension	0

LSPD