



**SUPERIOR
Hays,
Kansas**

**RADIATION
GUARD LOG**

Company BAIRD OIL COMPANY, LLC.
Well ANNA #2-3
Field
County NORTON
State KANSAS

Company BAIRD OIL COMPANY, LLC
Well ANNA #2-3
Field
County NORTON State KANSAS

Location: API #: 15-137-20560
675' FSL & 725' FEL
SEC 3 TWP 4S RGE 21W
Permanent Datum GROUND LEVEL Elevation 2163
Log Measured From KELLY BUSHING 5' A.G.L.
Drilling Measured From KELLY BUSHING
Other Services
Elevation
K.B. 2168
D.F.
G.L. 2163

Date	6-5-11
Run Number	ONE
Depth Driller	3754
Depth Logger	3753
Bottom Logged Interval	3752
Top Log Interval	3000
Casing Driller	202
Casing Logger	202
Bit Size	7.875
Type Fluid in Hole	CHEMICAL MUD
Density / Viscosity	9.3 / 65
pH / Fluid Loss	11.0 / 6.4
Source of Sample	FLOWLINE
Rm @ Meas. Temp	0.75 @ 93F
Rmf @ Meas. Temp	0.56 @ 93F
Rmc @ Meas. Temp	0.90 @ 93F
Source of Rmf / Rmc	MEASURED
Rm @ BHT	.620 @ 112F
Time Circulation Stopped	2 HOURS
Time Logger on Bottom	6:00 P.M.
Maximum Recorded Temperature	112F
Equipment Number	860
Location	HAYS, KS.
Recorded By	RUPP
Witnessed By	RICHARD BELL

<<< Fold Here >>>

All interpretations are opinions based on inferences from electrical or other measurements and we cannot and do not guarantee the accuracy or correctness of any interpretation, and we shall not, except in the case of gross or willful negligence on our part, be liable or responsible for any loss, costs, damages, or expenses incurred or sustained by anyone resulting from any interpretation made by any of our officers, agents or employees. These interpretations are also subject to our general terms and conditions set out in our current Price Schedule.

Comments

SUPERIOR WELL SERVICES
785-628-6395
THANK YOU FOR YOUR BUSINESS
DIRECTIONS: LOGAN & #9, W TO RD E12, 6N, W INTO.

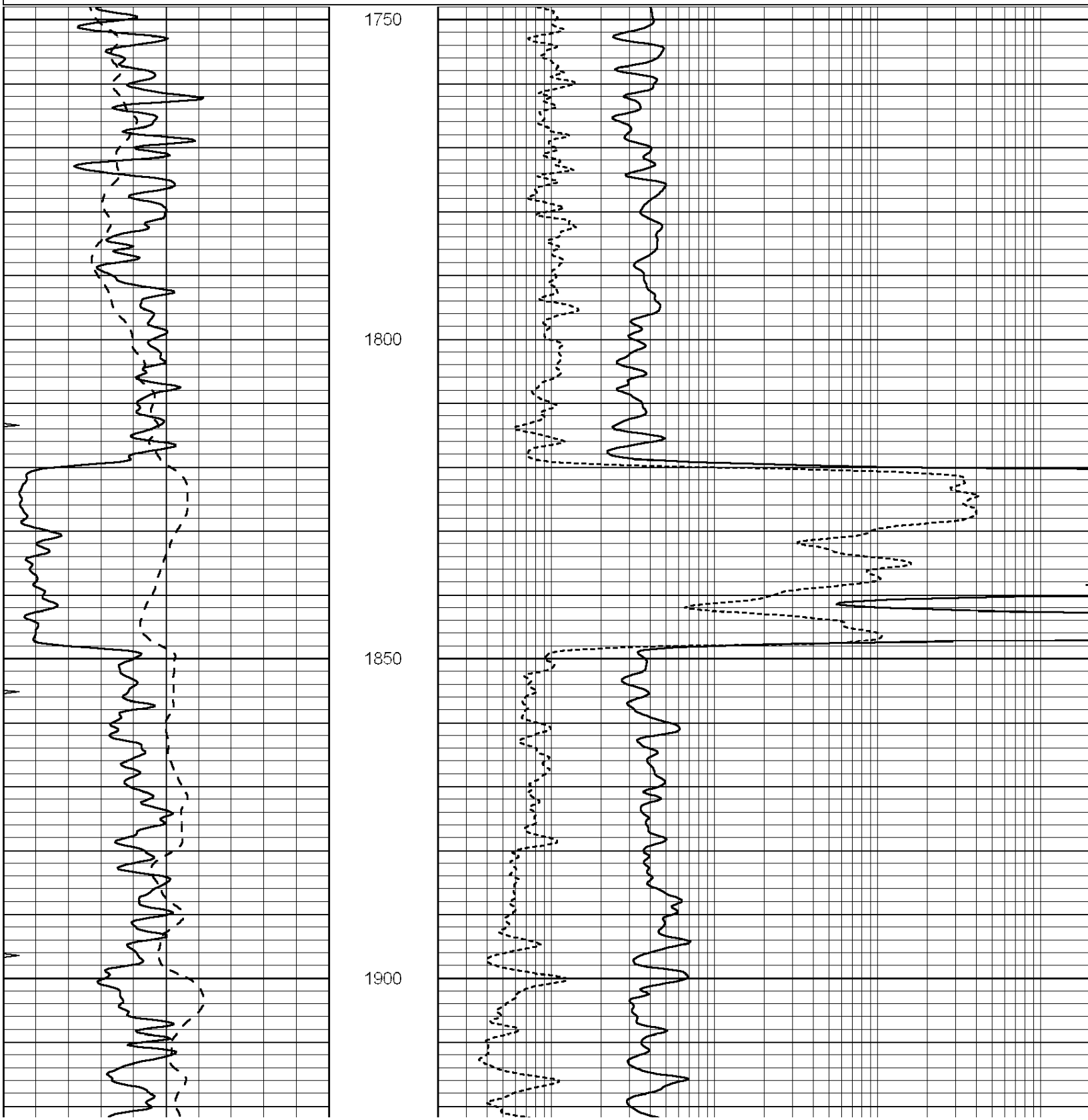


SUPERIOR
Hays,
Kansas

MAIN SECTION

Database File: 006930rag.db
 Dataset Pathname: pass4.A
 Presentation Format: rag2
 Dataset Creation: Sun Jun 05 19:44:51 2011
 Charted by: Depth in Feet scaled 1:240

0	GAMMA RAY (GAPI)	150	ABHV (ft3)	0.2	GUARD (Ohm-m)	2000
-100	SP (mV)	100		0	NEUTRON (NAPI)	1000
-----			TBHV (ft3)	-----		



0	GAMMA RAY (GAPI)	150	ABHV (ft3)	0.2	GUARD (Ohm-m)	2000
-100	SP (mV)	100		0	NEUTRON (NAPI)	1000
-----			TBHV (ft3)	-----		

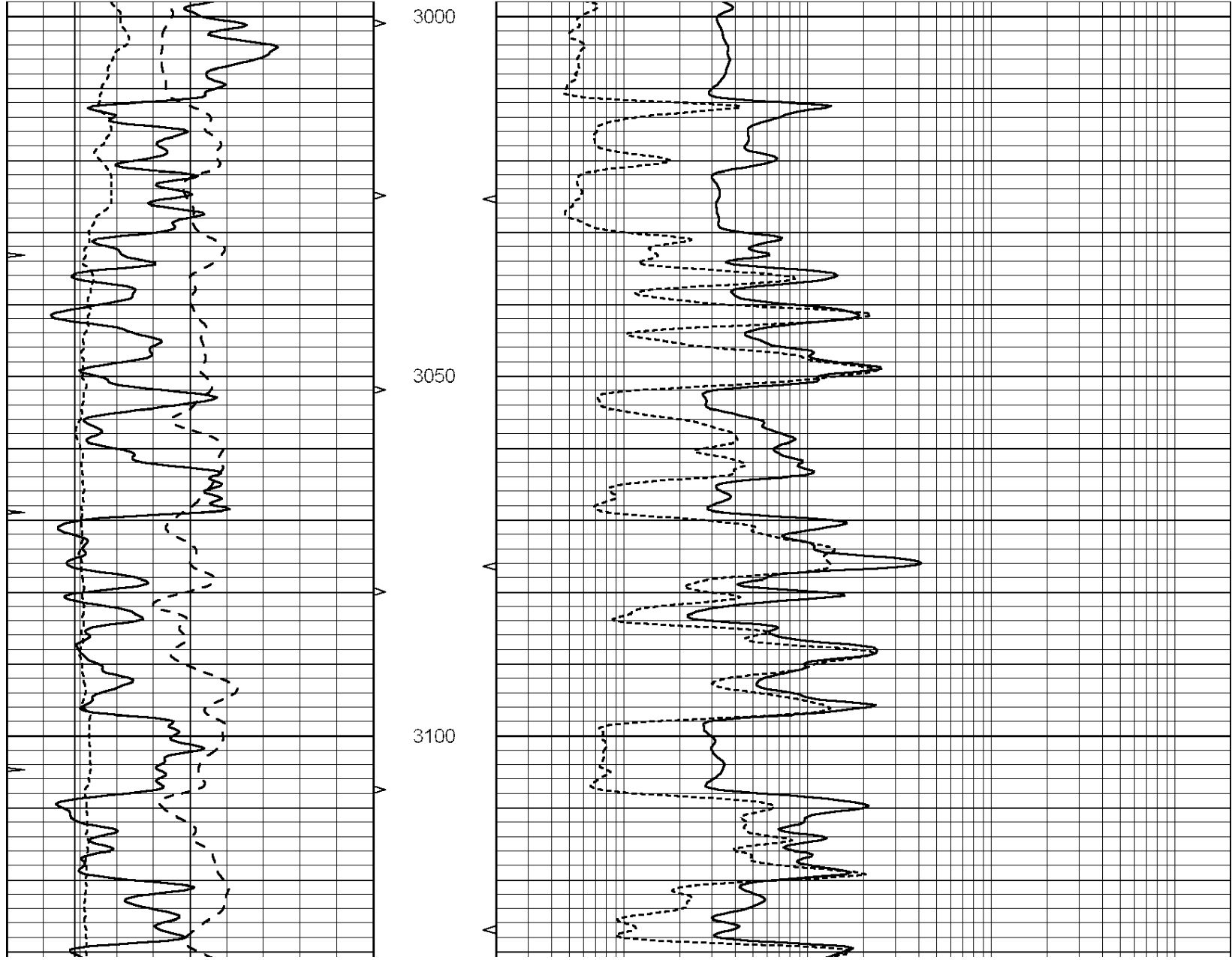


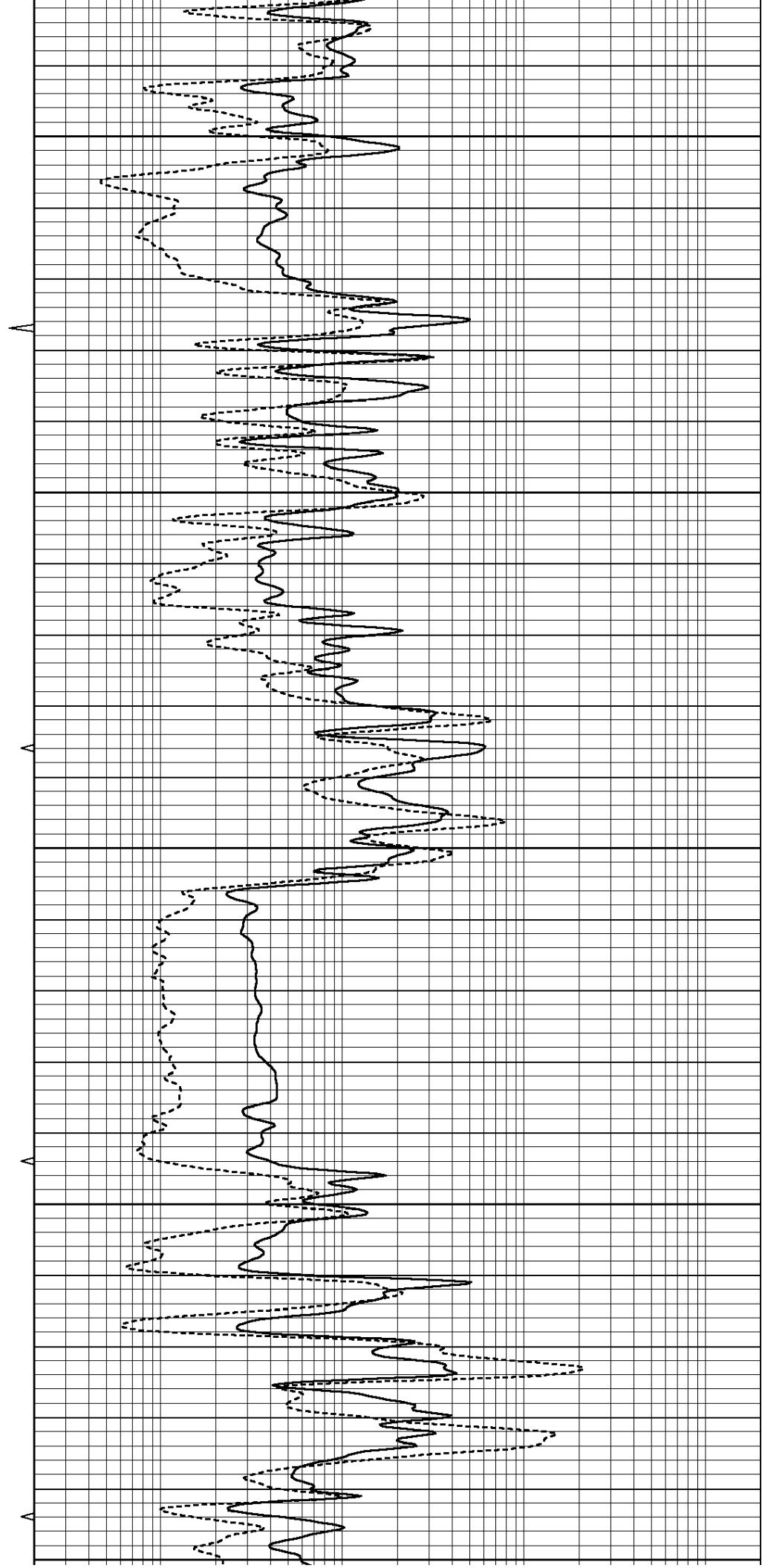
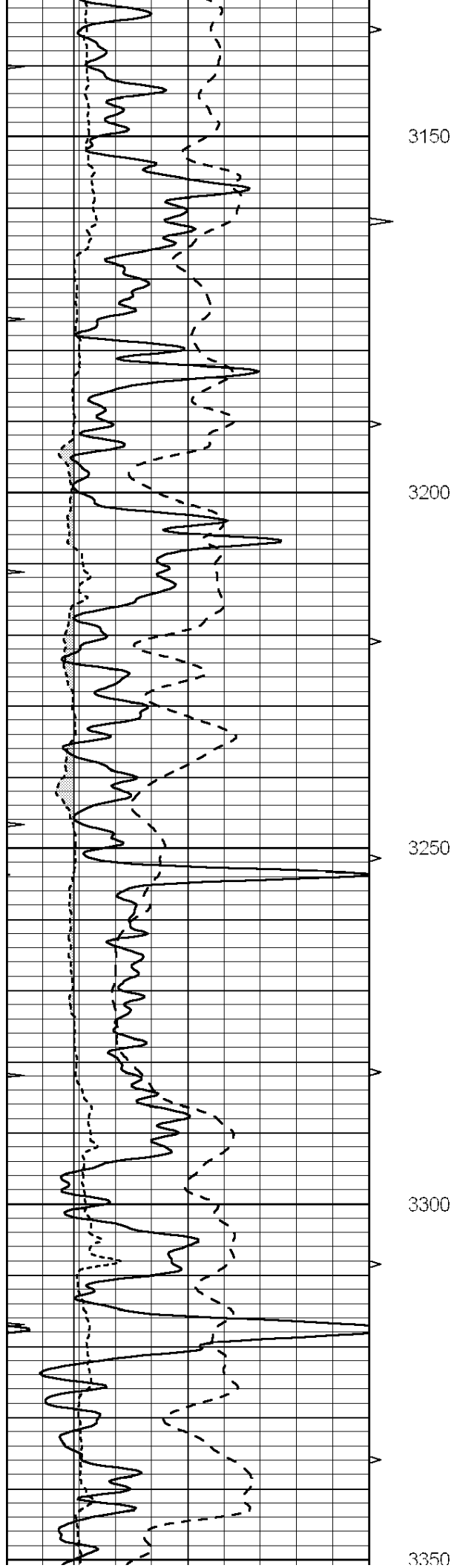
SUPERIOR
Hays,
Kansas

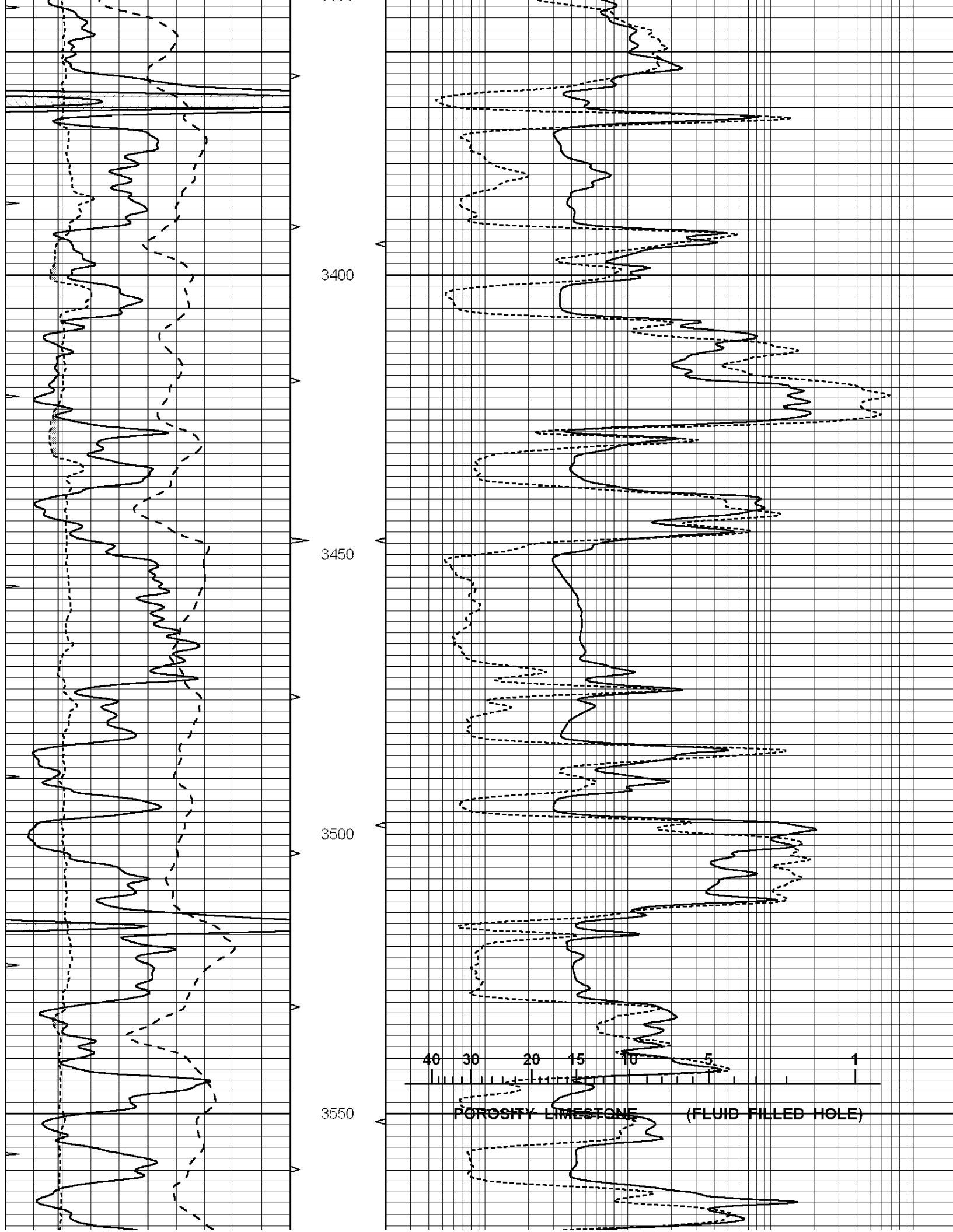
MAIN SECTION

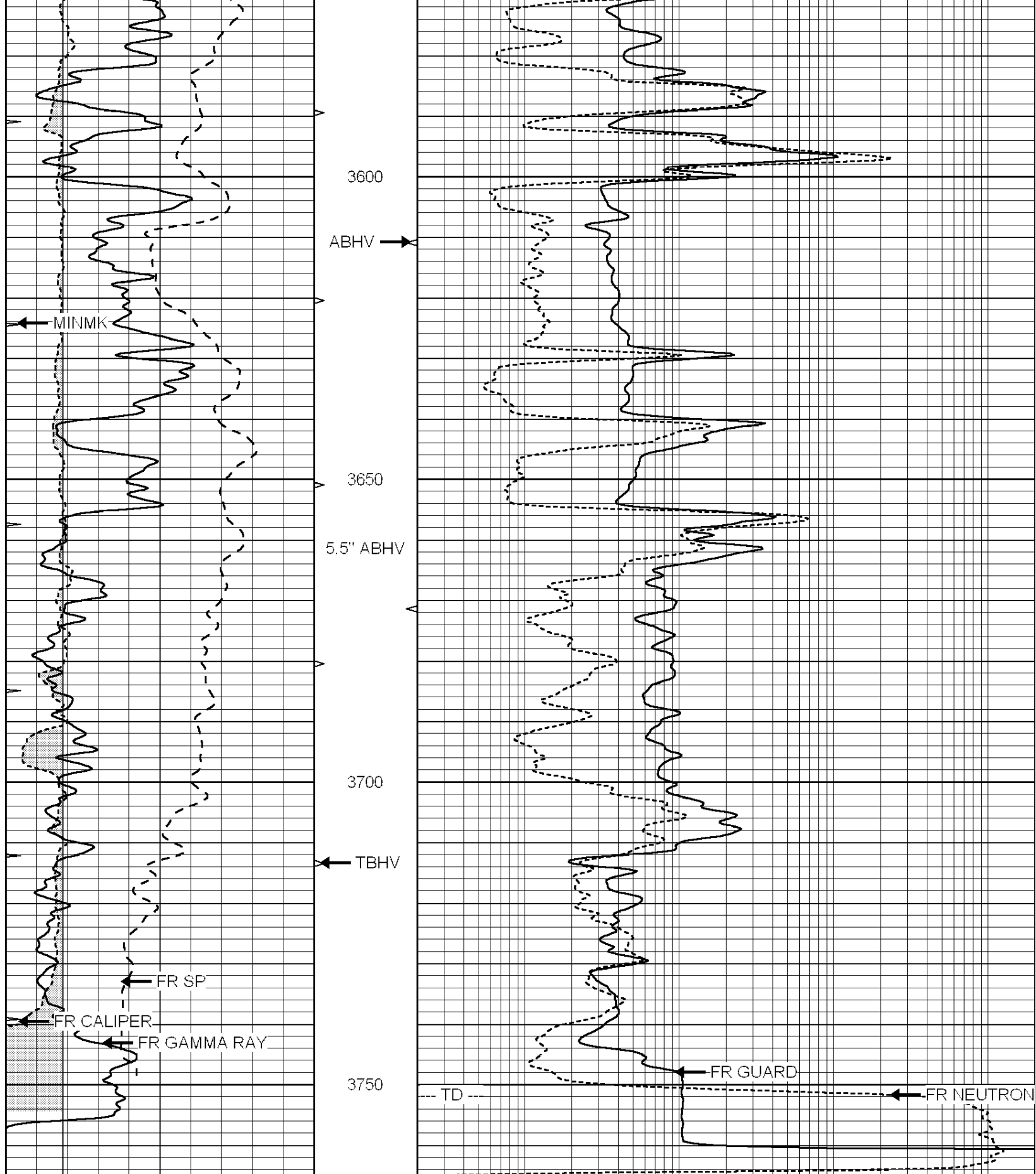
Database File: 006930rag.db
 Dataset Pathname: pass4.A
 Presentation Format: rag
 Dataset Creation: Sun Jun 05 19:44:51 2011
 Charted by: Depth in Feet scaled 1:240

0	GAMMA RAY (GAPI)	150	ABHV	0.2	GUARD (Ohm-m)	2000
-100	SP (mV)	100	10 (ft3)	0	NEUTRON (NAPI)	1000
-----			TBHV	-----		
6	CALIPER (in)	16	0 (ft3)	10		









0	GAMMA RAY (GAPI)	150	ABHV	0.2	GUARD (Ohm-m)	2000
-100	SP (mV)	100	10 (ft3)	0 0	NEUTRON (NAPI)	1000
6	CALIPER (in)	16	TBHV			
			0 (ft3)	10		

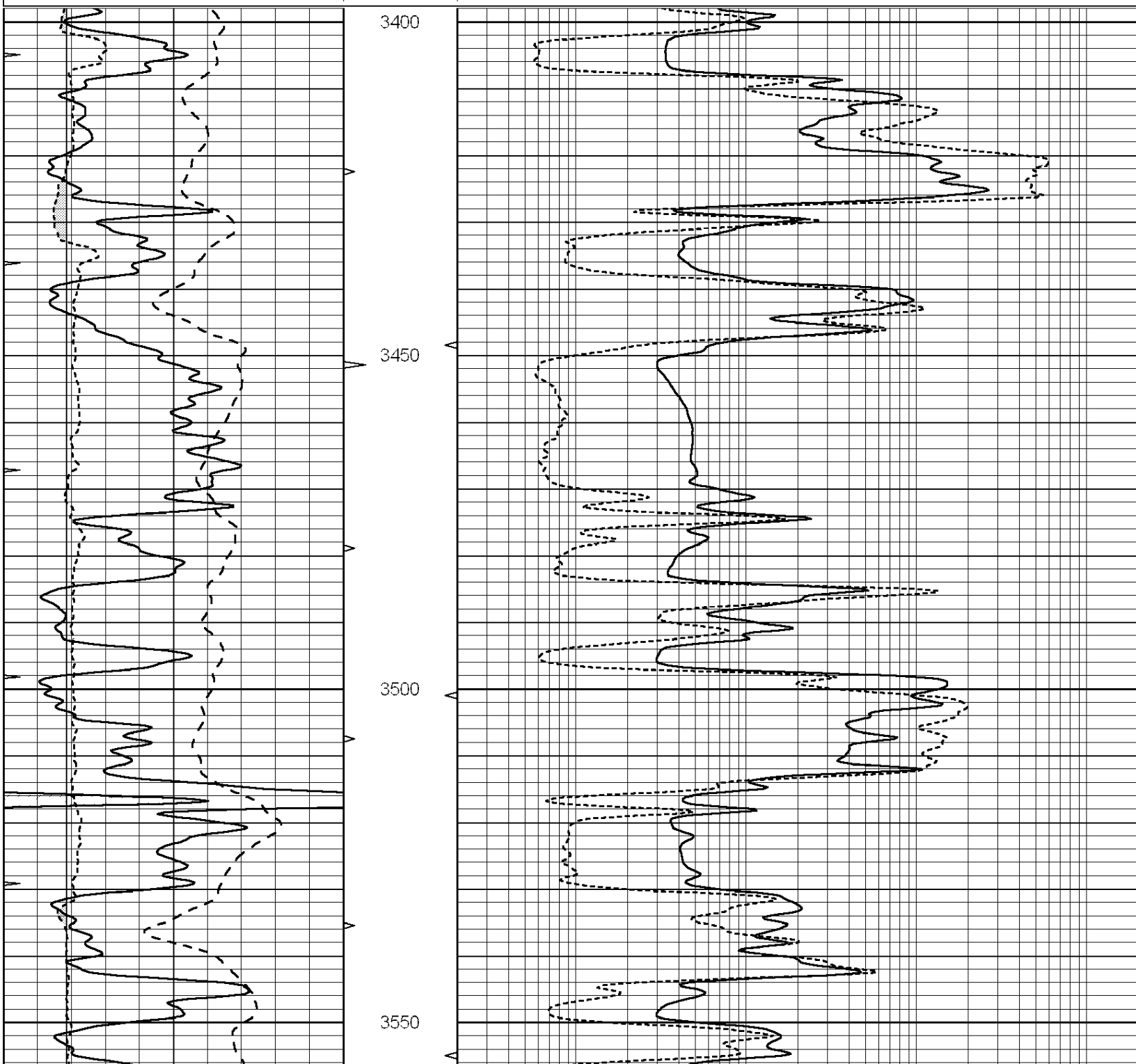


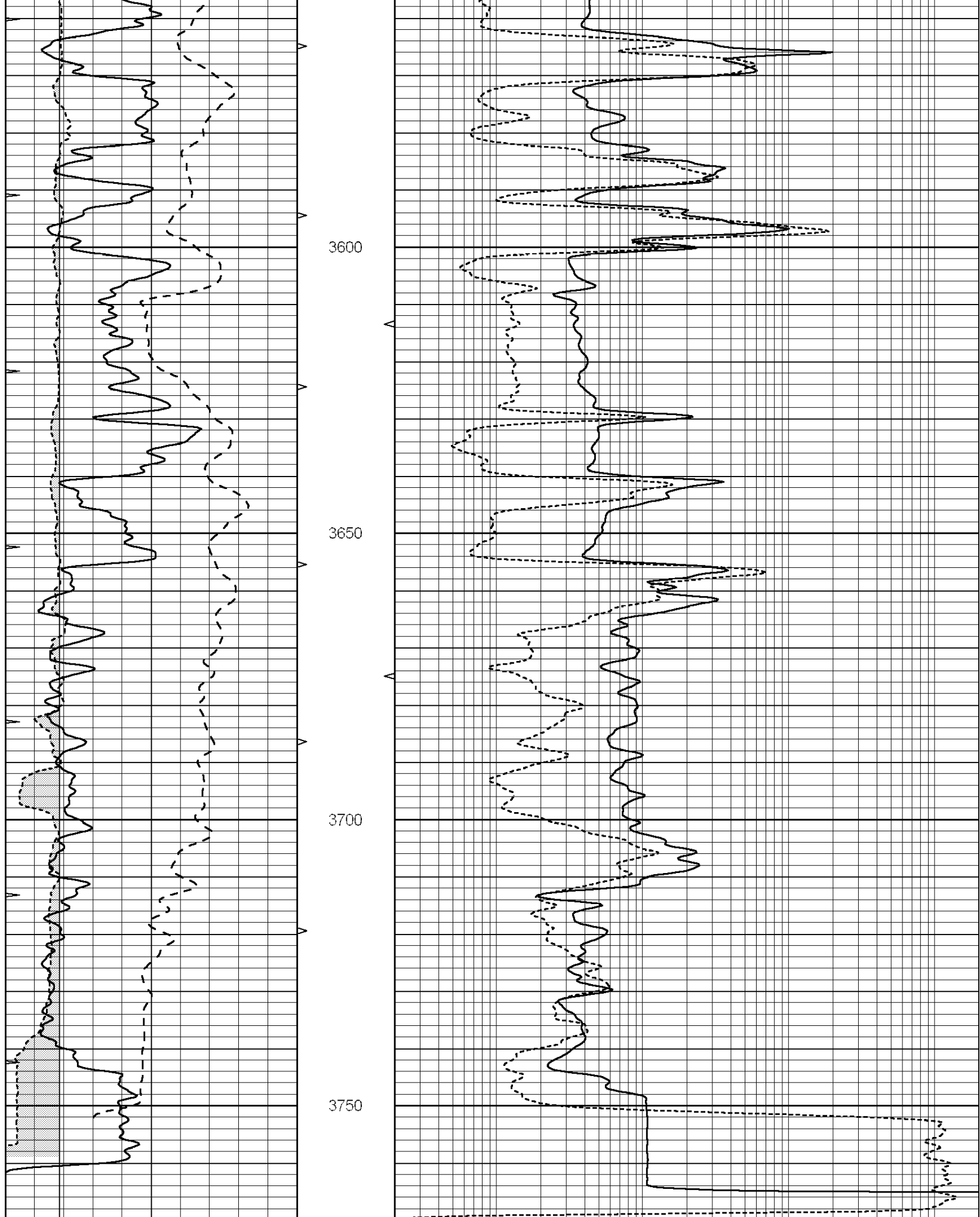
SUPERIOR
Hays,
Kansas

REPEAT SECTION

Database File: 006930rag.db
 Dataset Pathname: pass3.1
 Presentation Format: rag
 Dataset Creation: Sun Jun 05 18:28:15 2011 by Calc Open-Cased 090629
 Charted by: Depth in Feet scaled 1:240

0	GAMMA RAY (GAPI)	150	ABHV	0.2	GUARD (Ohm-m)	2000
-100	SP (mV)	100	10 (ft3)	0 0	NEUTRON (NAPI)	1000
6	CALIPER (in)	16	TBHV			
			0 (ft3)	10		





0	GAMMA RAY (GAPI)	150	ABHV	0.2	GUARD (Ohm-m)	2000
100	SP (mV)	100	10 (#3)	0.0	NEUTRON (NAPI)	1000

100	SP (mv)	100	10	(ft3)	0	0	NEUTRON (NAPI)	1000
6	CALIPER (in)	16	TBHV					
			0	(ft3)	10			

Calibration Report

Database File: 006930rag.db
 Dataset Pathname: pass4.A
 Dataset Creation: Sun Jun 05 19:44:51 2011

Neutron Calibration Report

Serial Number: RAG1
 Tool Model: RAG
 Performed: Sun Jun 05 18:12:45 2011

Calibrator Values: 0 1 NAPI
 Calibrator Readings: 0 1 cps
 Sensitivity: 1.3 NAPI/cps

Micro Spherically Focused Log Calibration Report

Serial-Model: RAG1-A
 Performed: Sun Jun 05 18:12:55 2011

	Readings			References			Results	
	Low	High		Low	High		m	b
Conductivity	0.0110	0.9000	V	10.0000	1000.0000	mmho	1600.0000	-6.5000
Caliper	0.1837	0.3151	V	7.9000	16.0000	in	61.6659	-3.4286

Gamma Ray Calibration Report

Serial Number: RAG1
 Tool Model: RAG
 Performed: Sun Jun 05 18:25:04 2011

Calibrator Value: 1.0 GAPI
 Background Reading: 0.9 cps
 Calibrator Reading: 1.0 cps
 Sensitivity: 1.5000 GAPI/cps