

Company Charles N. Griffin  
 Well Gates # 2  
 Field Wharton  
 County Harper  
 State Kansas

Company Charles N. Griffin  
 Well Gates # 2  
 Field Wharton  
 County Harper State Kansas

Location: API #: 15 077 21741  
 990' FSL & 1650' FWL  
 SEC 2 TWP 34S RGE 8W  
 Permanent Datum Ground Level Elevation 1387'  
 Log Measured From KB 10' AGL  
 Drilling Measured From KB  
 Other Services  
 CDNL  
 Elevation  
 K.B. 1397'  
 D.F. -----  
 G.L. 1387'

Date	5-8-11	
Run Number	One	
Depth Driller	4750'	
Depth Logger	4750'	
Bottom Logged Interval	3748'	
Top Log Interval	3400'	
Casing Driller	218'	
Casing Logger	218'	
Bit Size	7 7/8"	
Type Fluid in Hole	Chemical	
Density / Viscosity	9.0/70	
pH / Fluid Loss	8.5/13.6	
Source of Sample	Pit	
Rm @ Meas. Temp	2.45@70degf	
Rmf @ Meas. Temp	1.84@70degf	
Rmc @ Meas. Temp	3.92@70degf	
Source of Rmf / Rmc	Calculated	
Rm @ BHT	1.38@125degf	
Time Circulation Stopped	4:00 a.m.	
Time Logger on Bottom	7:00 a.m.	
Maximum Recorded Temperature	125 degf	
Equipment Number	T045	
Location	Hays, KS.	
Recorded By	L. Smith	
Witnessed By	Mr. Bruce Reed	Mr. J R Griffin

<<< Fold Here >>>

All interpretations are opinions based on inferences from electrical or other measurements and we cannot and do not guarantee the accuracy or correctness of any interpretation, and we shall not, except in the case of gross or willful negligence on our part, be liable or responsible for any loss, costs, damages, or expenses incurred or sustained by anyone resulting from any interpretation made by any of our officers, agents or employees. These interpretations are also subject to our general terms and conditions set out in our current Price Schedule.

**Comments**

East of Sharon Ks. to 140th, S to Hyw. 2, E to 70th, S 3, E 1/2, N into.  
  
 Thanks for using The Perforators LLC Hays, KS. (785-621-4604)

Database File: cggates#2.db  
 Dataset Pathname: pass4  
 Presentation Format: kdillin2  
 Dataset Creation: Sun May 08 07:28:37 2011 by Log Open-Cased 100827  
 Charted by: Depth in Feet scaled 1:600

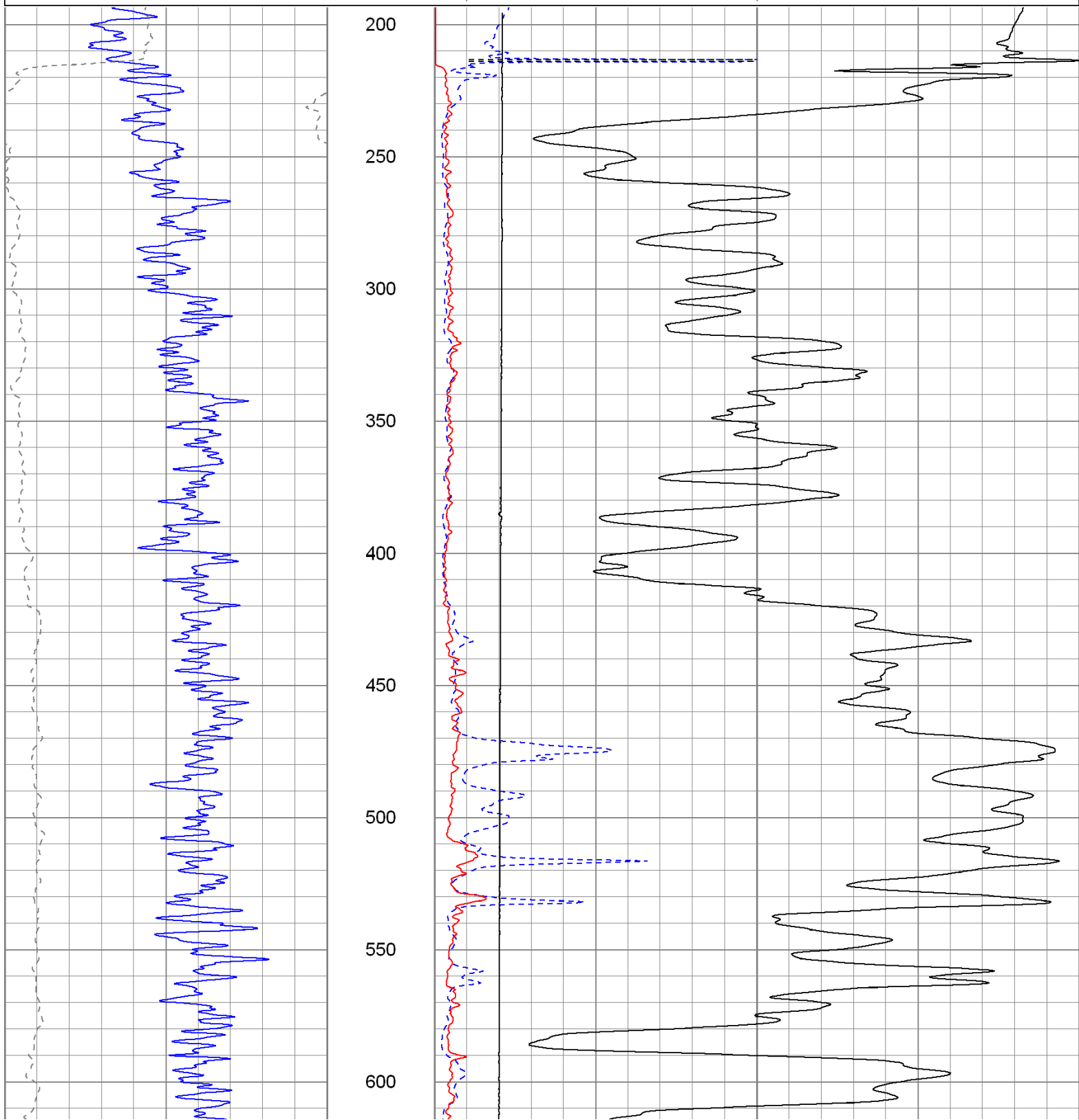
0	GR (GAPI)	150
-200	SP (mV)	0

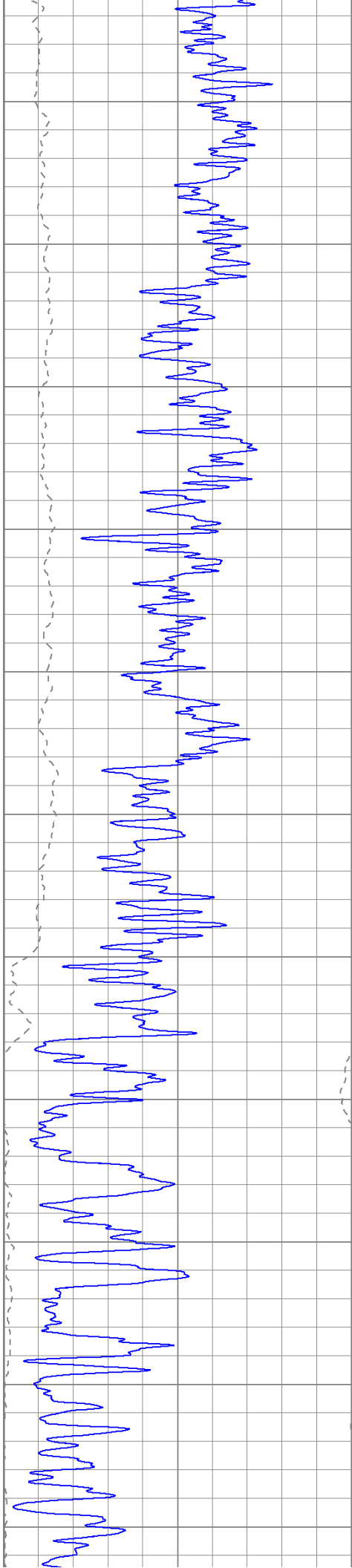
0	RILD (Ohm-m)	50
0	RLL3 (Ohm-m)	50

1000	CILD (mmho/m)	0
------	---------------	---

10000	LTEN (lb)	0
-------	-----------	---

50	RILD x 10 (Ohm-m)	500
50	RLL3 x 10 (Ohm-m)	500





650

700

750

800

850

900

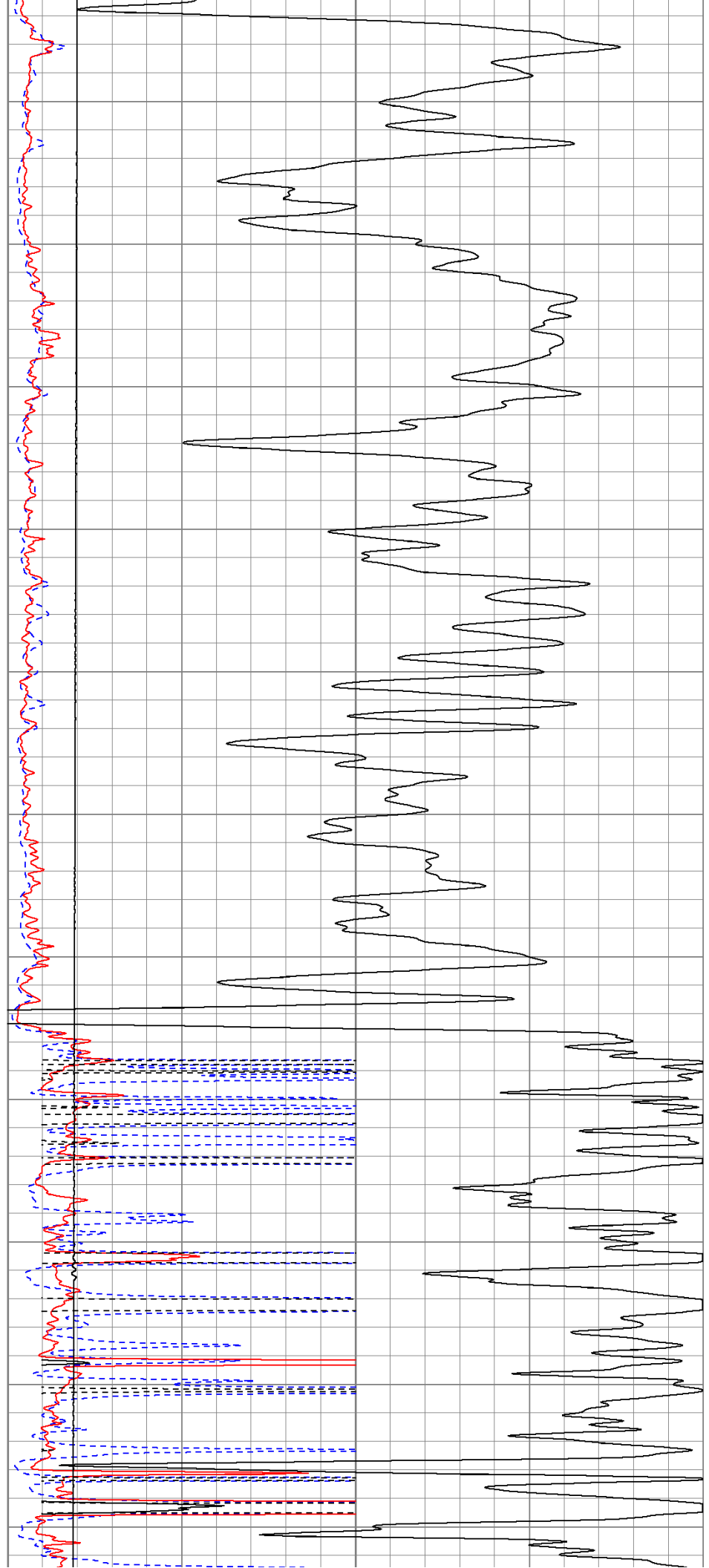
950

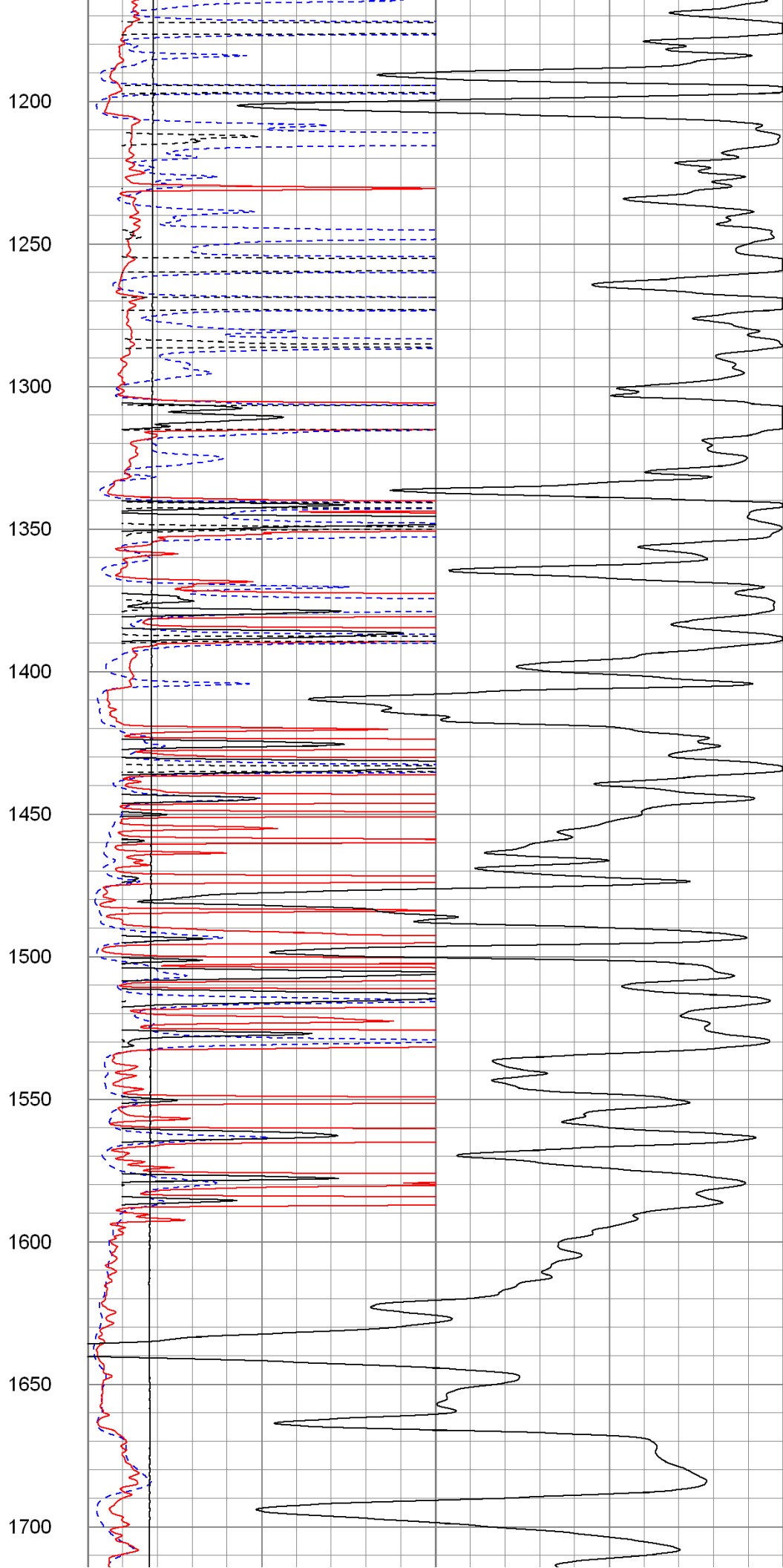
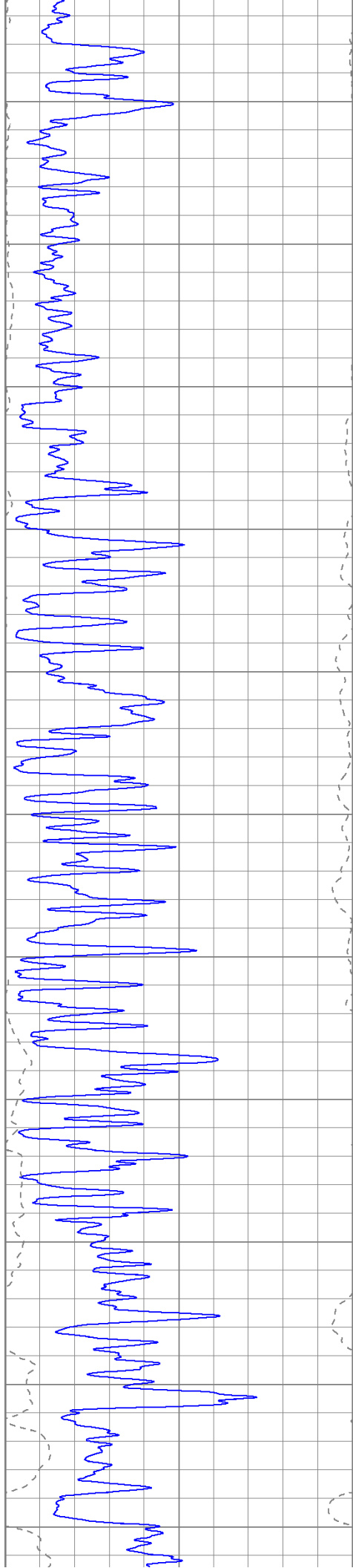
1000

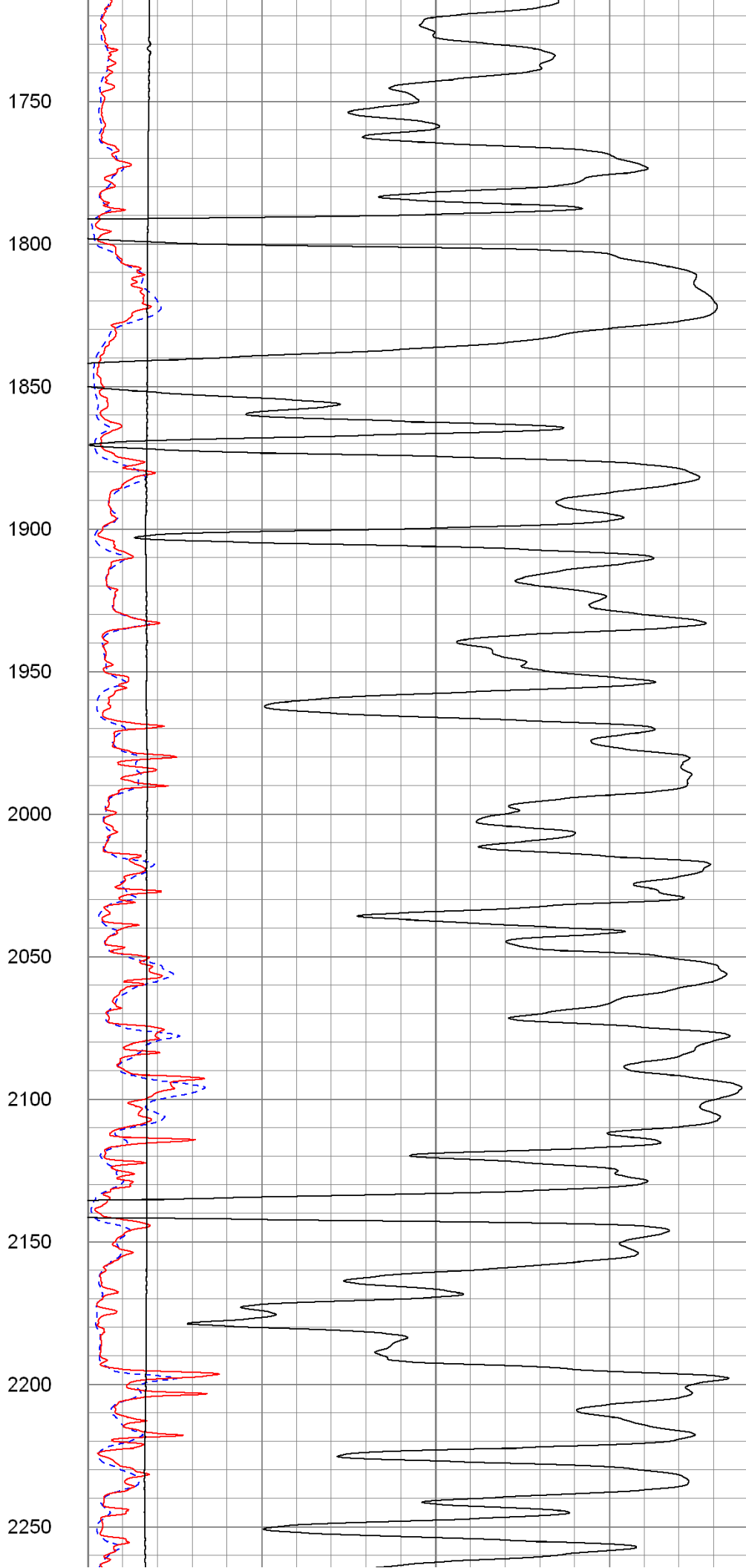
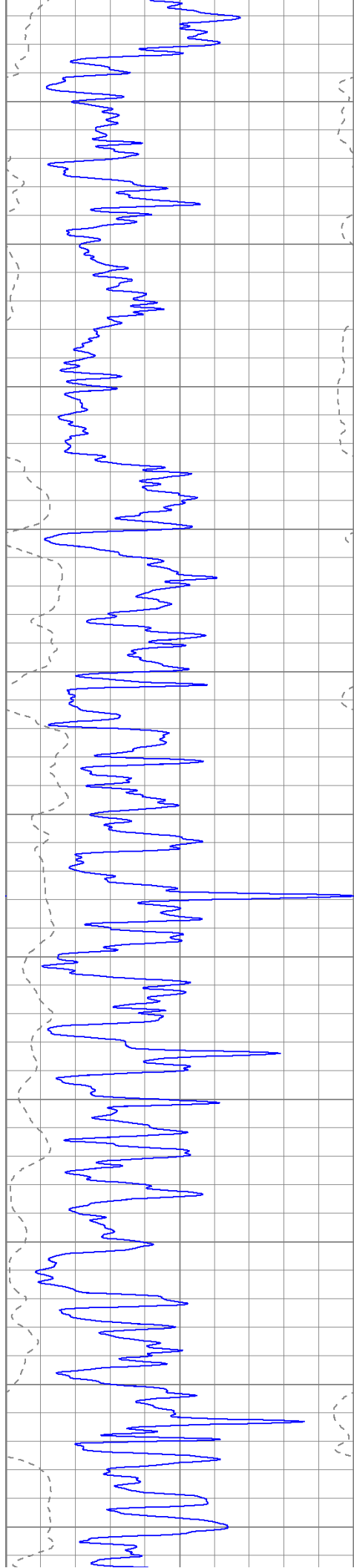
1050

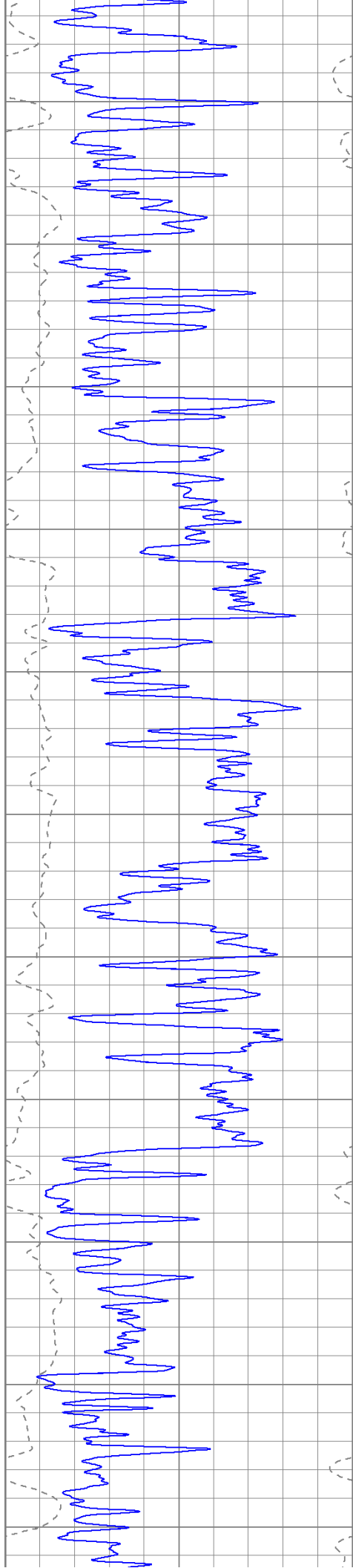
1100

1150

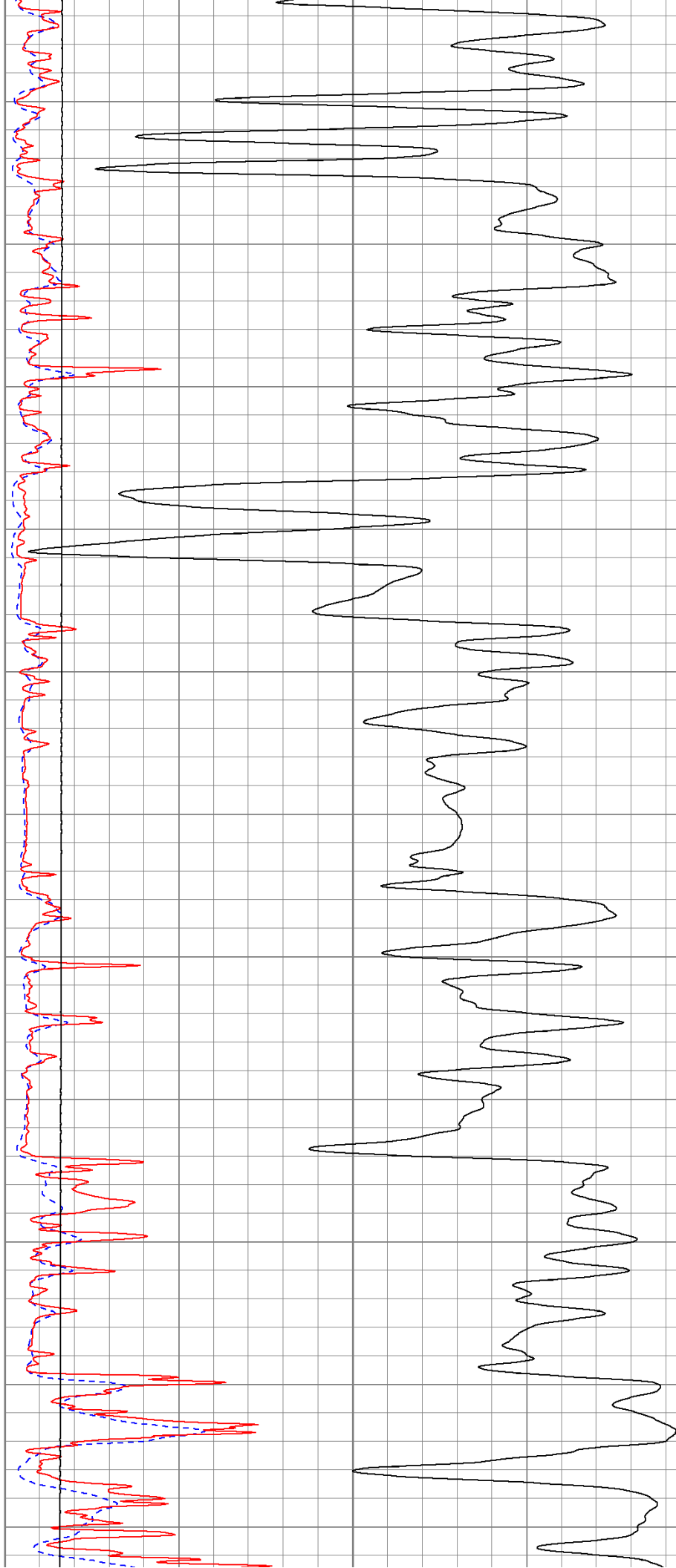


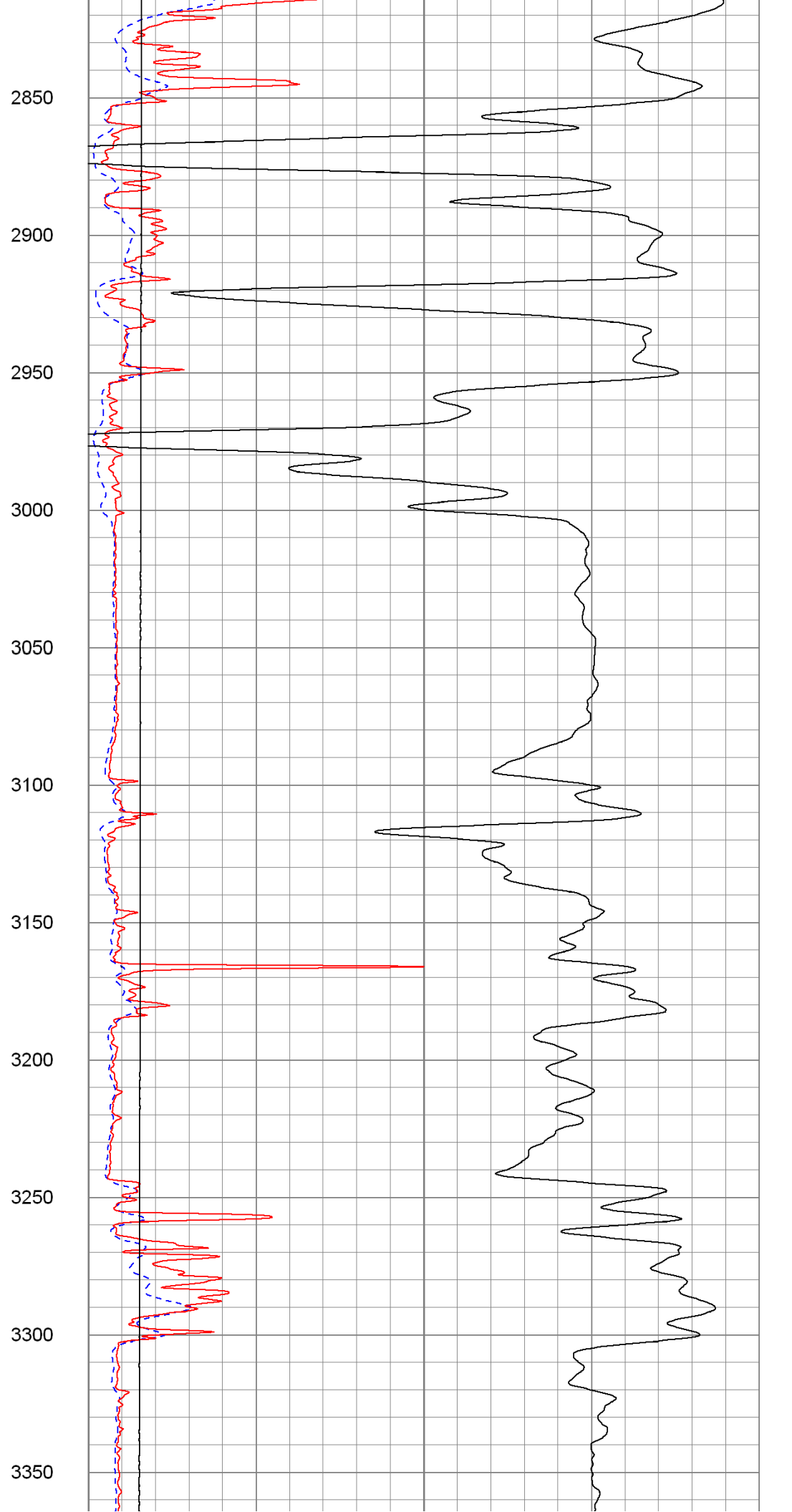
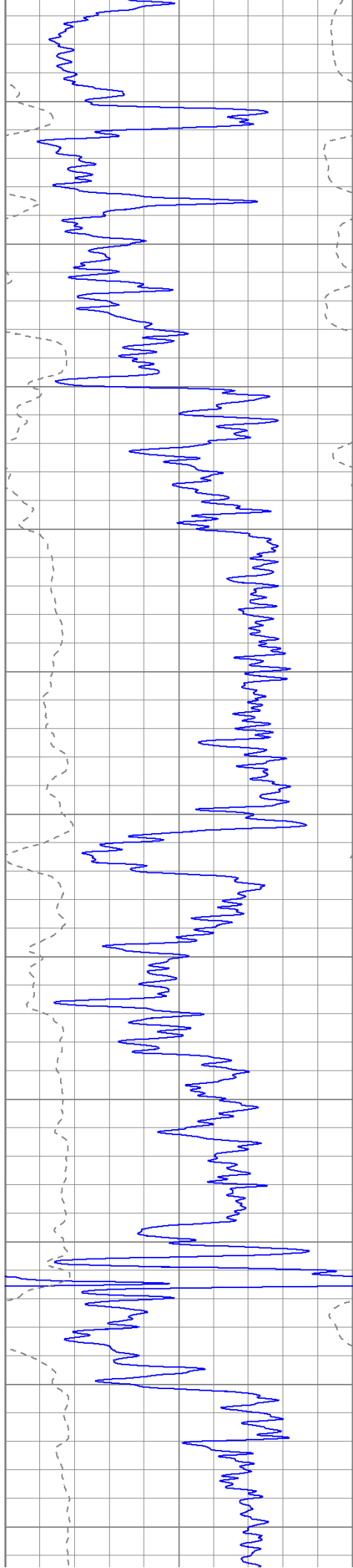


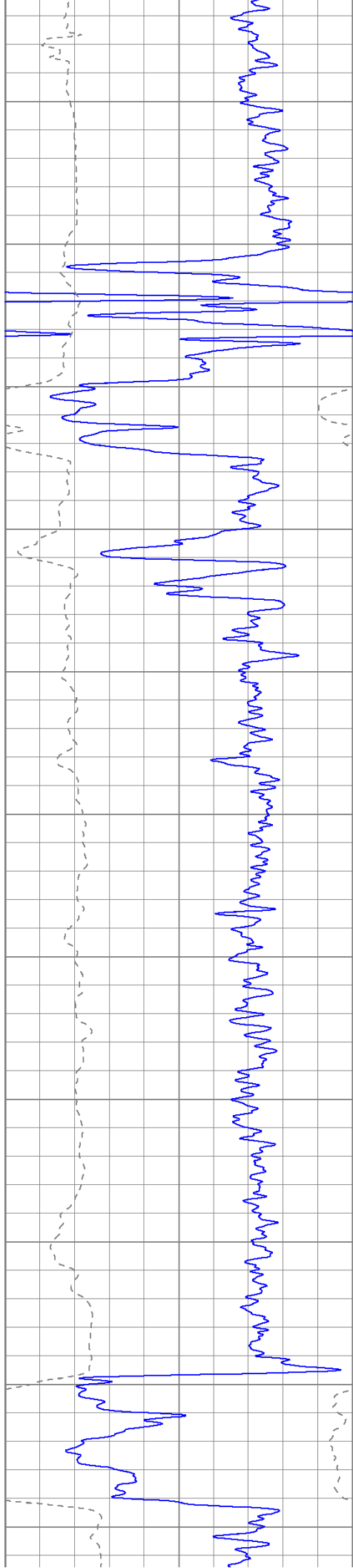




2300  
2350  
2400  
2450  
2500  
2550  
2600  
2650  
2700  
2750  
2800







3400

3450

3500

3550

3600

3650

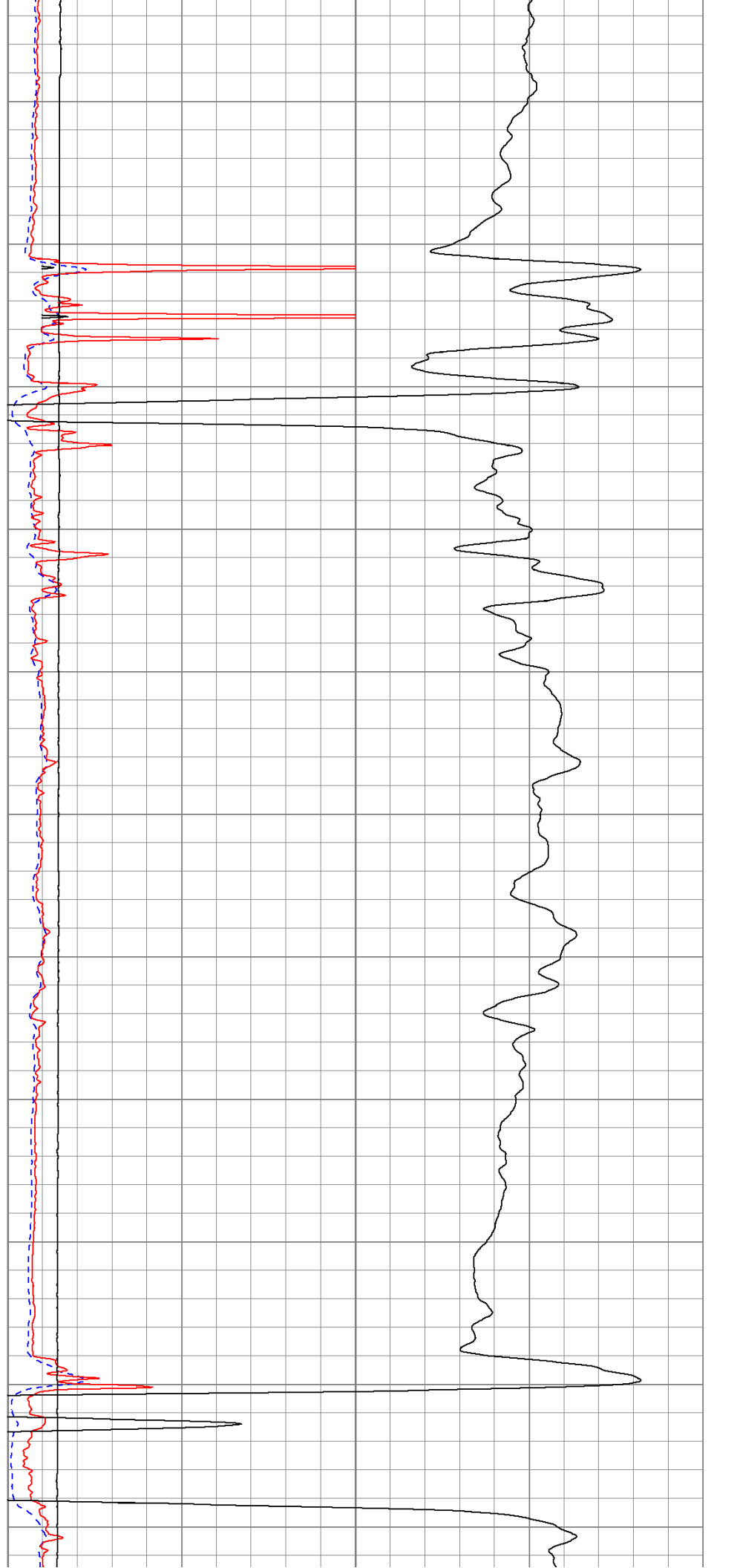
3700

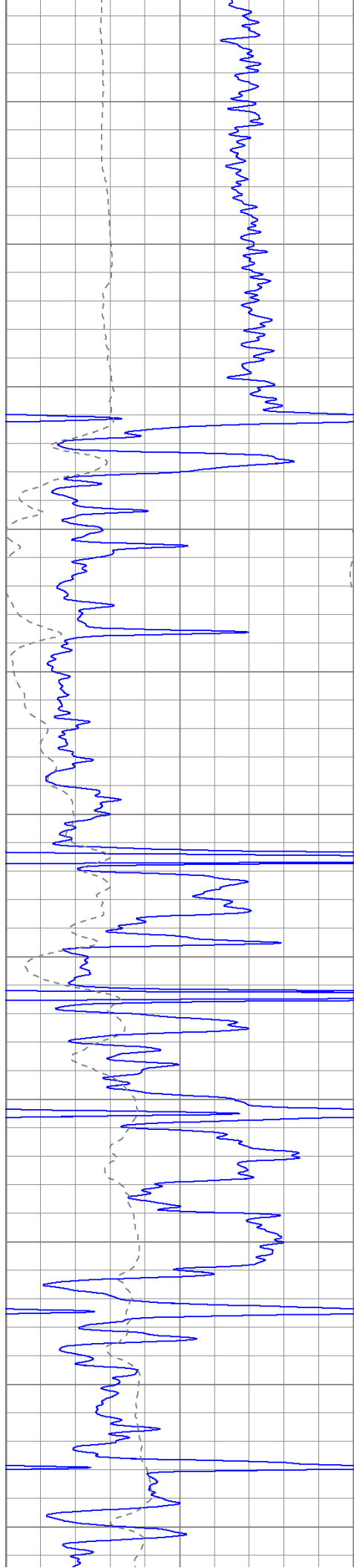
3750

3800

3850

3900





3950

4000

4050

4100

4150

4200

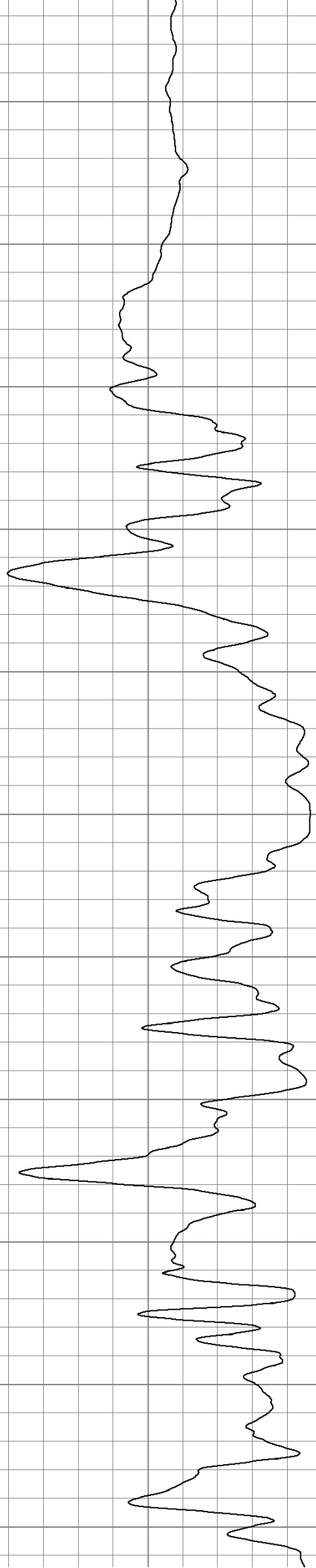
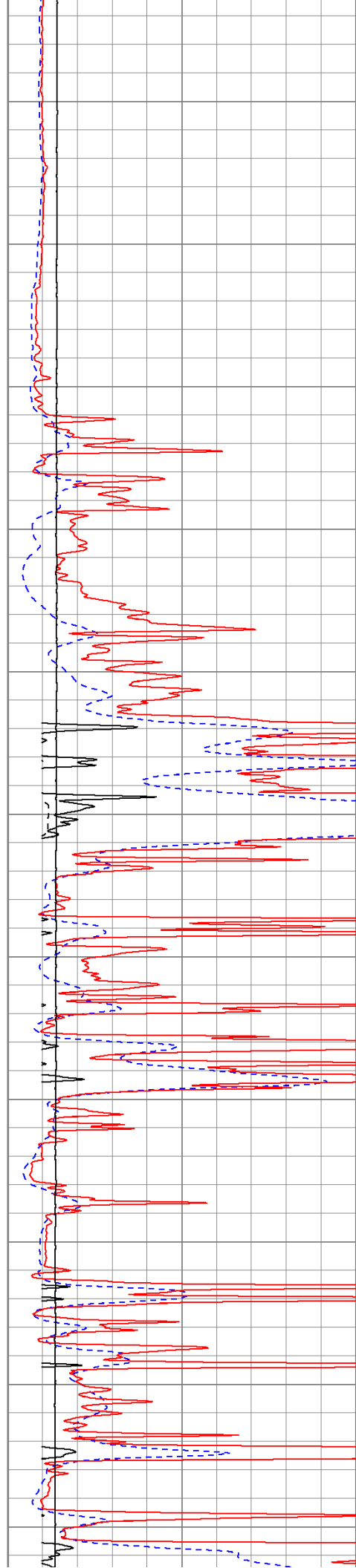
4250

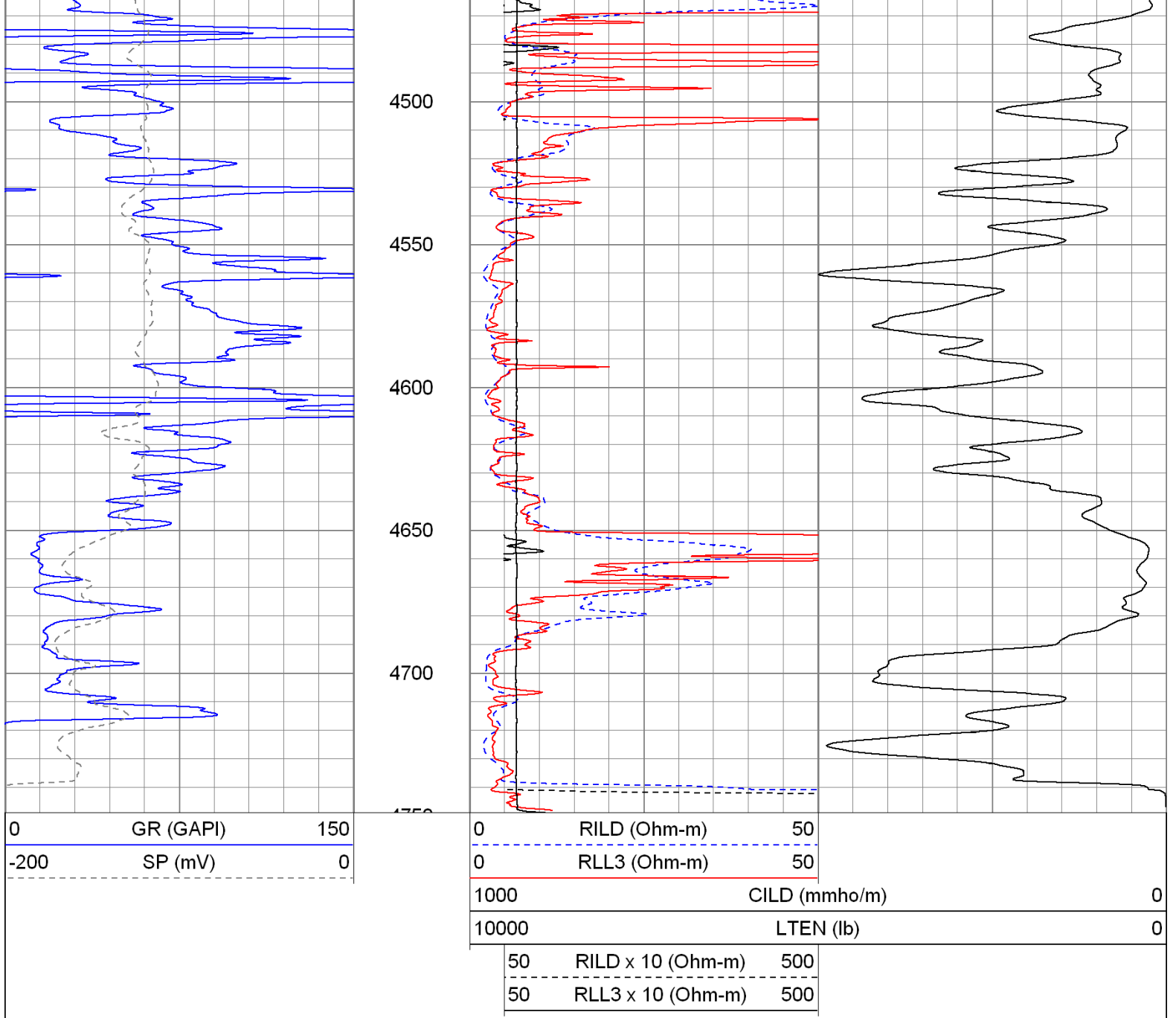
4300

4350

4400

4450

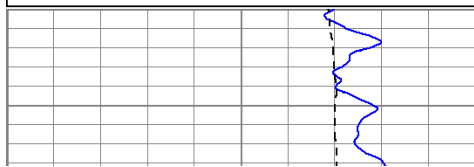




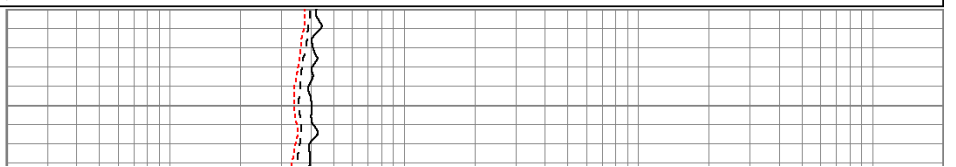
# Main Pass

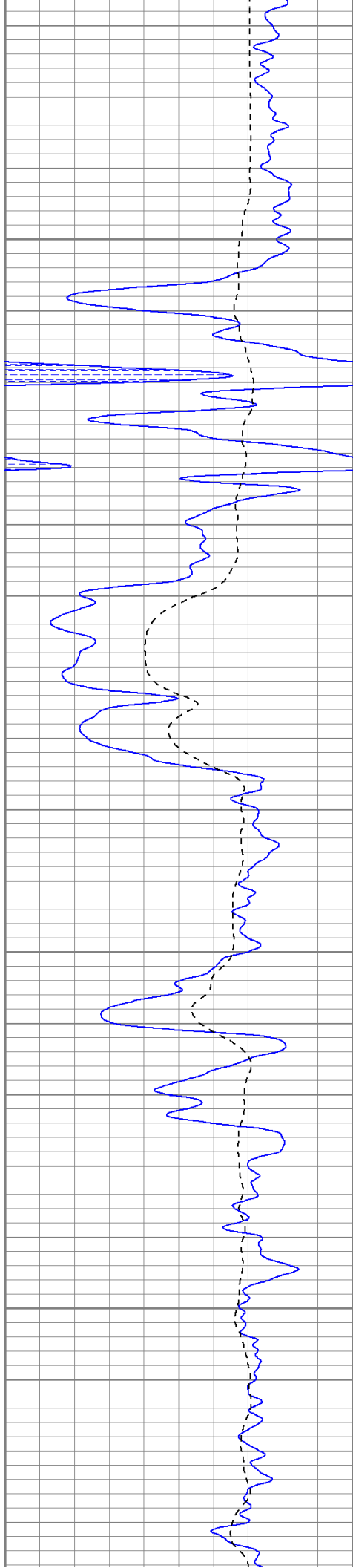
Database File: cggates#2.db  
 Dataset Pathname: pass4  
 Presentation Format: kdil  
 Dataset Creation: Sun May 08 07:28:37 2011 by Log Open-Cased 100827  
 Charted by: Depth in Feet scaled 1:240

0	GR (GAPI)	150	0.2	RILM (Ohm-m)	2000
-100	SP (mV)	100	0.2	RILD (Ohm-m)	2000
			0.2	RLL3 (Ohm-m)	2000



3400



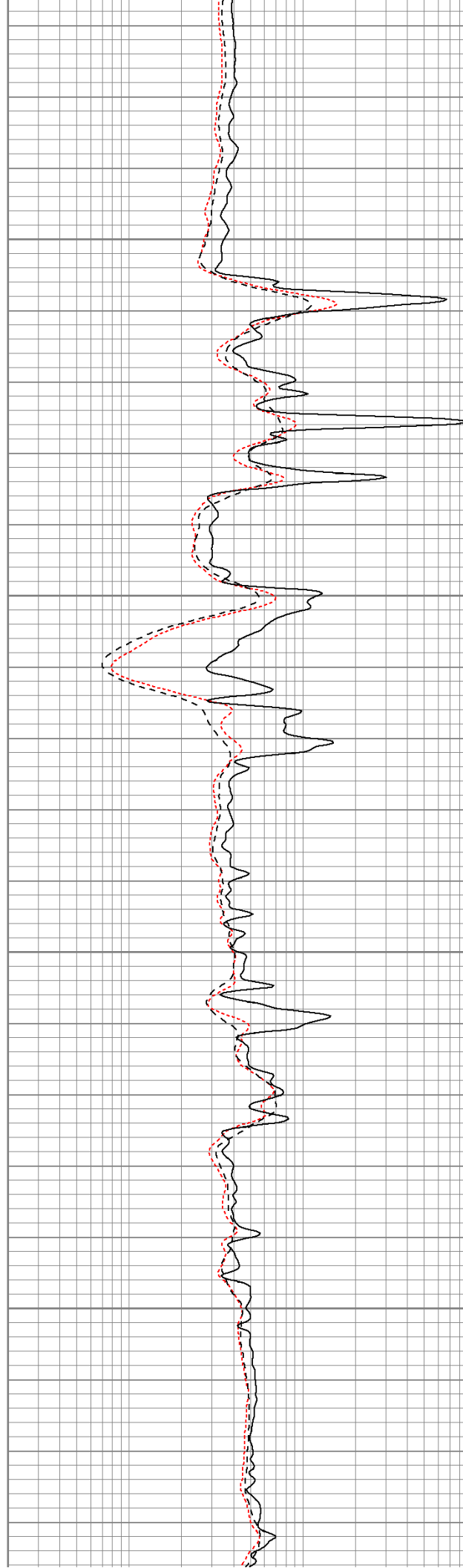


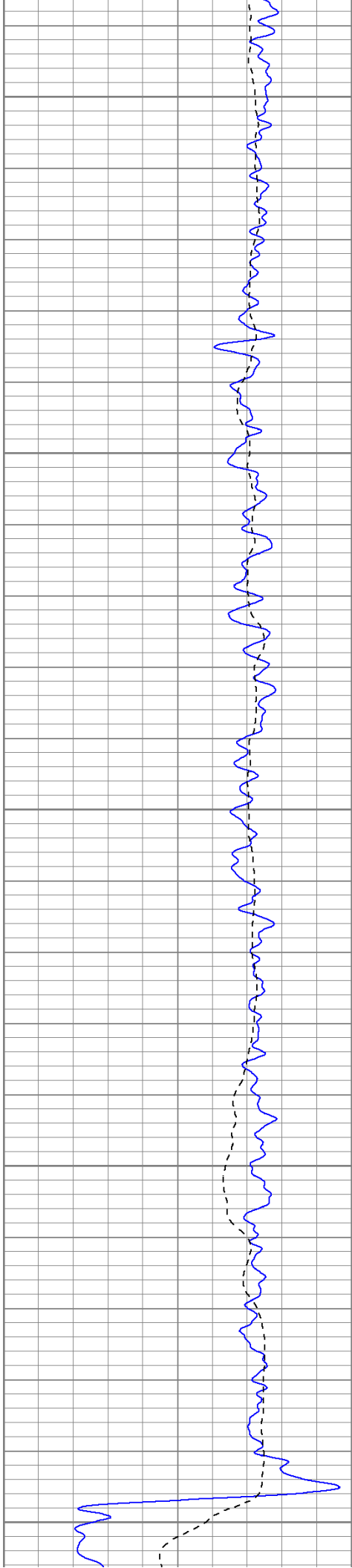
3450

3500

3550

3600





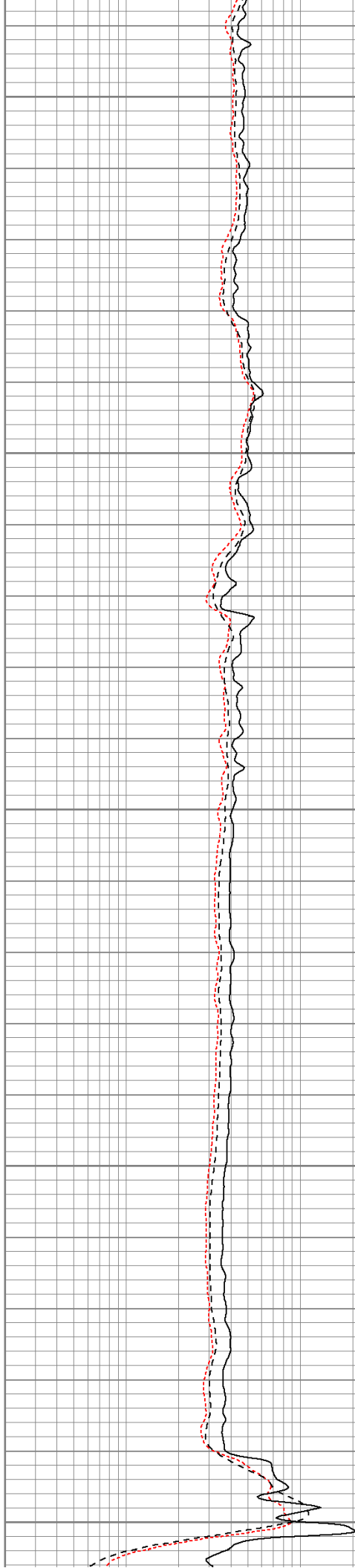
3650

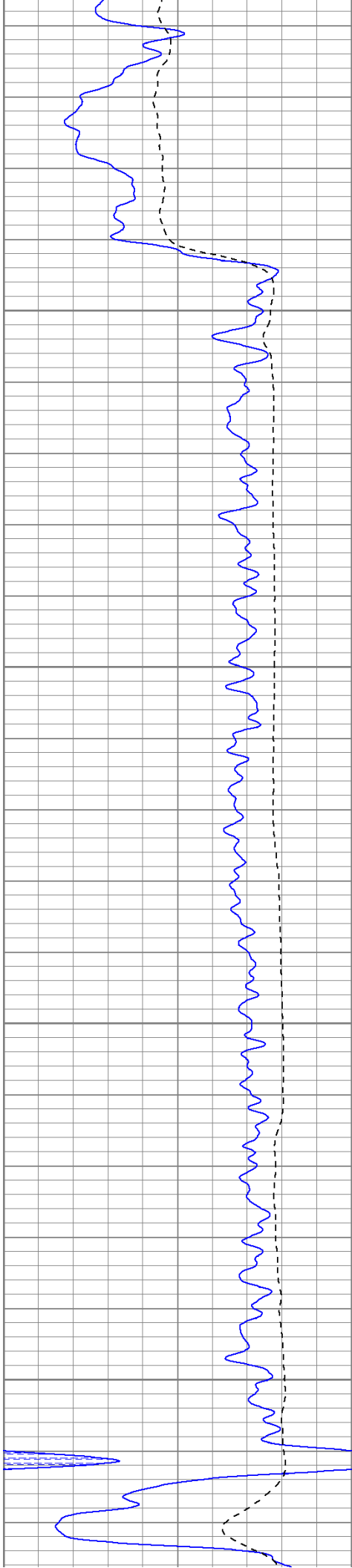
3700

3750

3800

3850



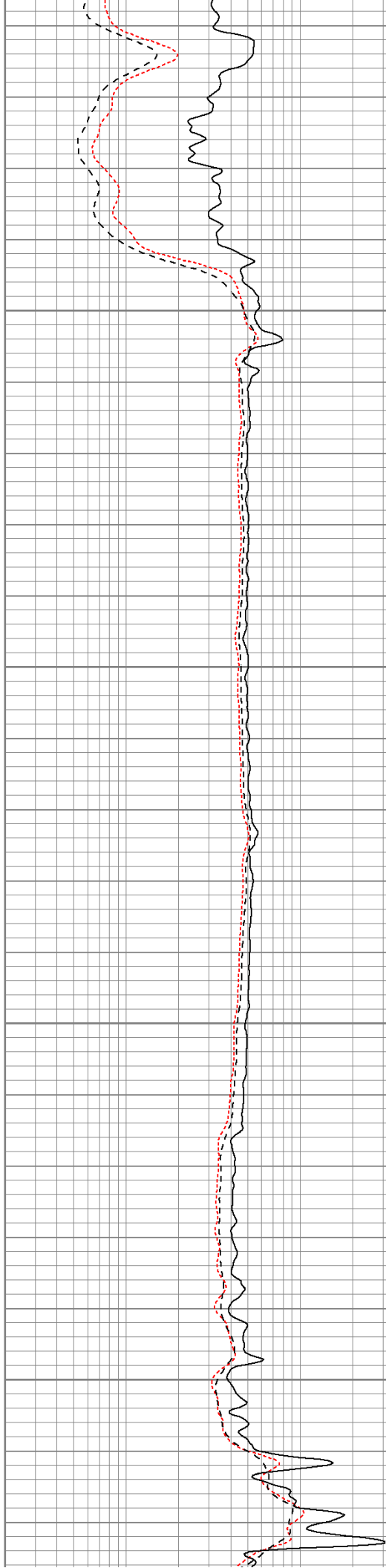


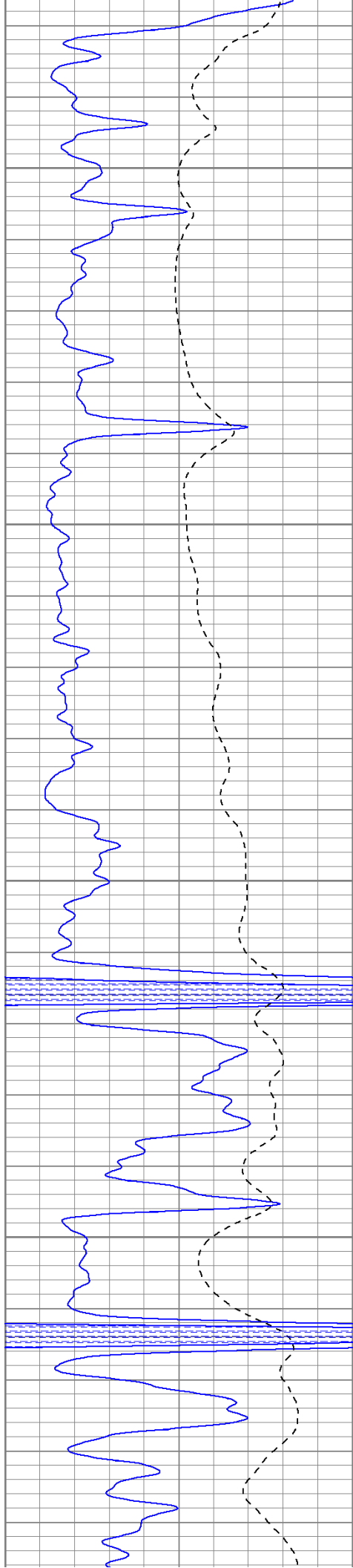
3900

3950

4000

4050



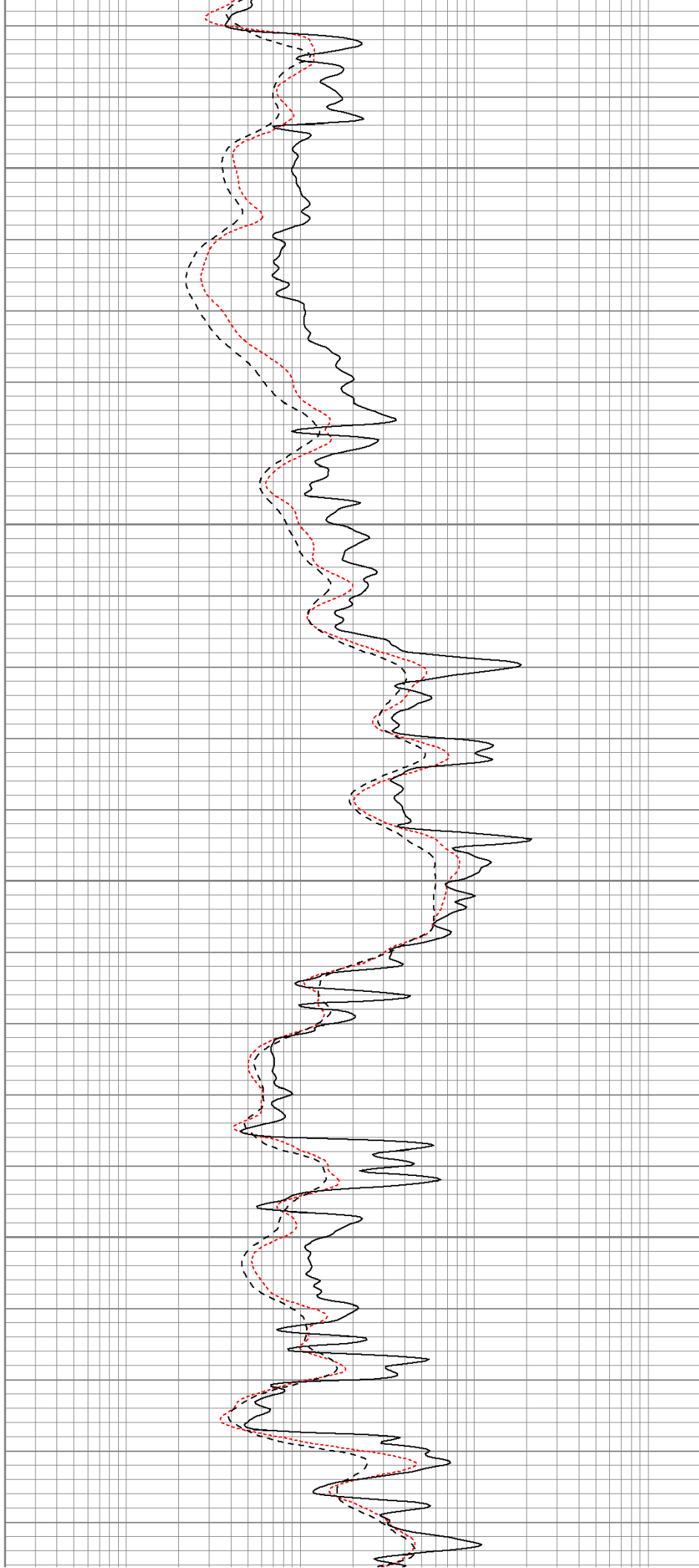


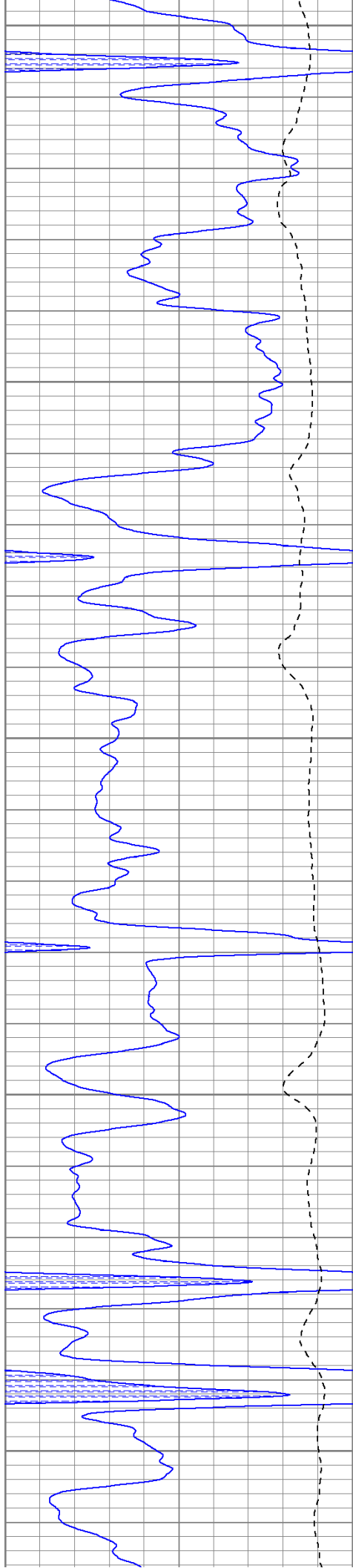
4100

4150

4200

4250





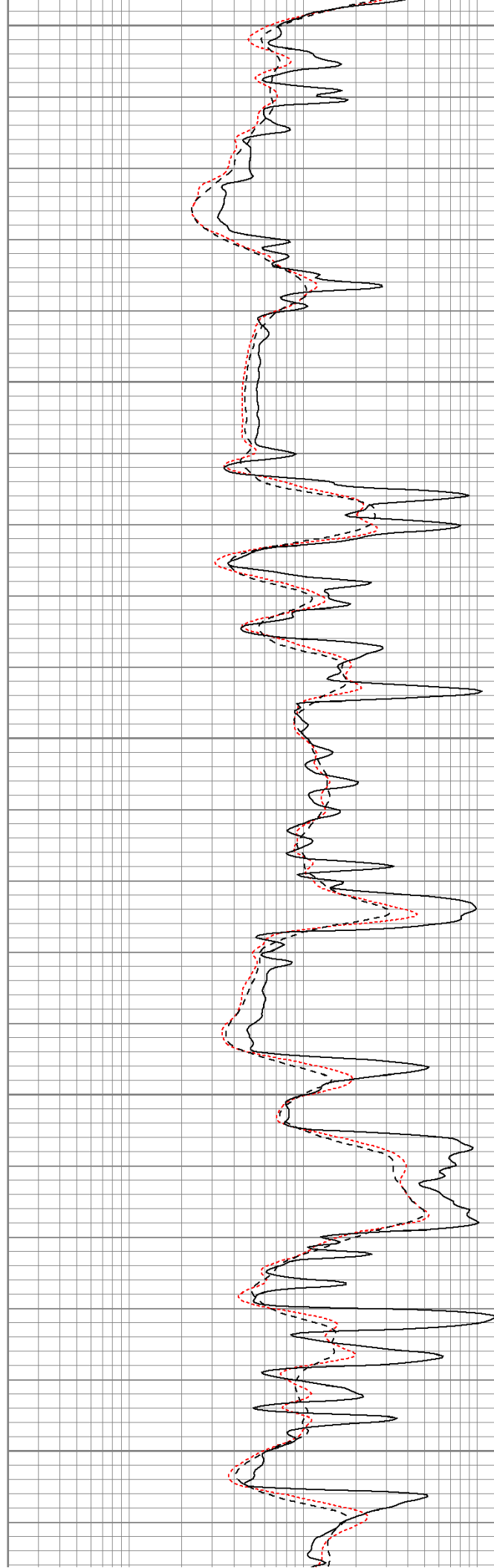
4300

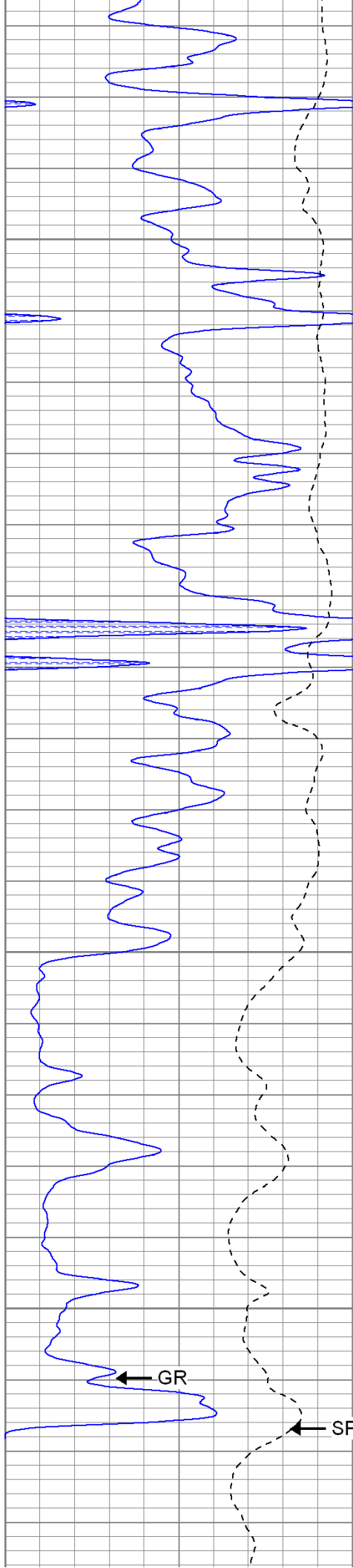
4350

4400

4450

4500





4550

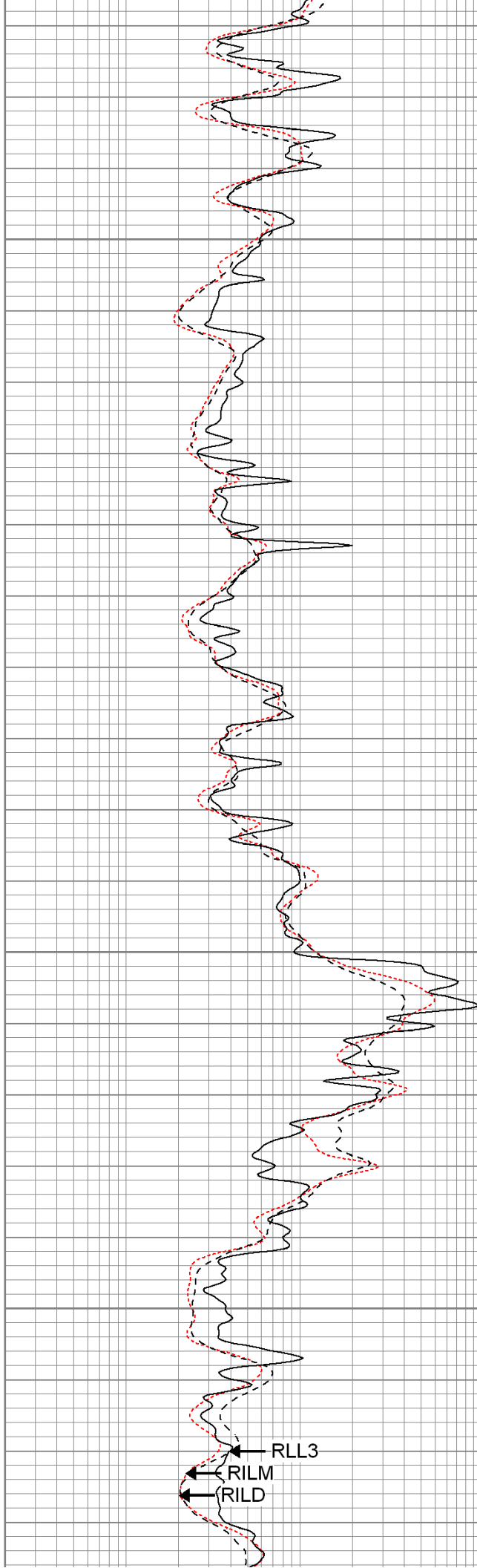
4600

4650

4700

GR

SP



RLL3

RILM

RILD

0	GR (GAPI)	150
-100	SP (mV)	100

0.2	RILM (Ohm-m)	2000
0.2	RILD (Ohm-m)	2000
0.2	RLL3 (Ohm-m)	2000

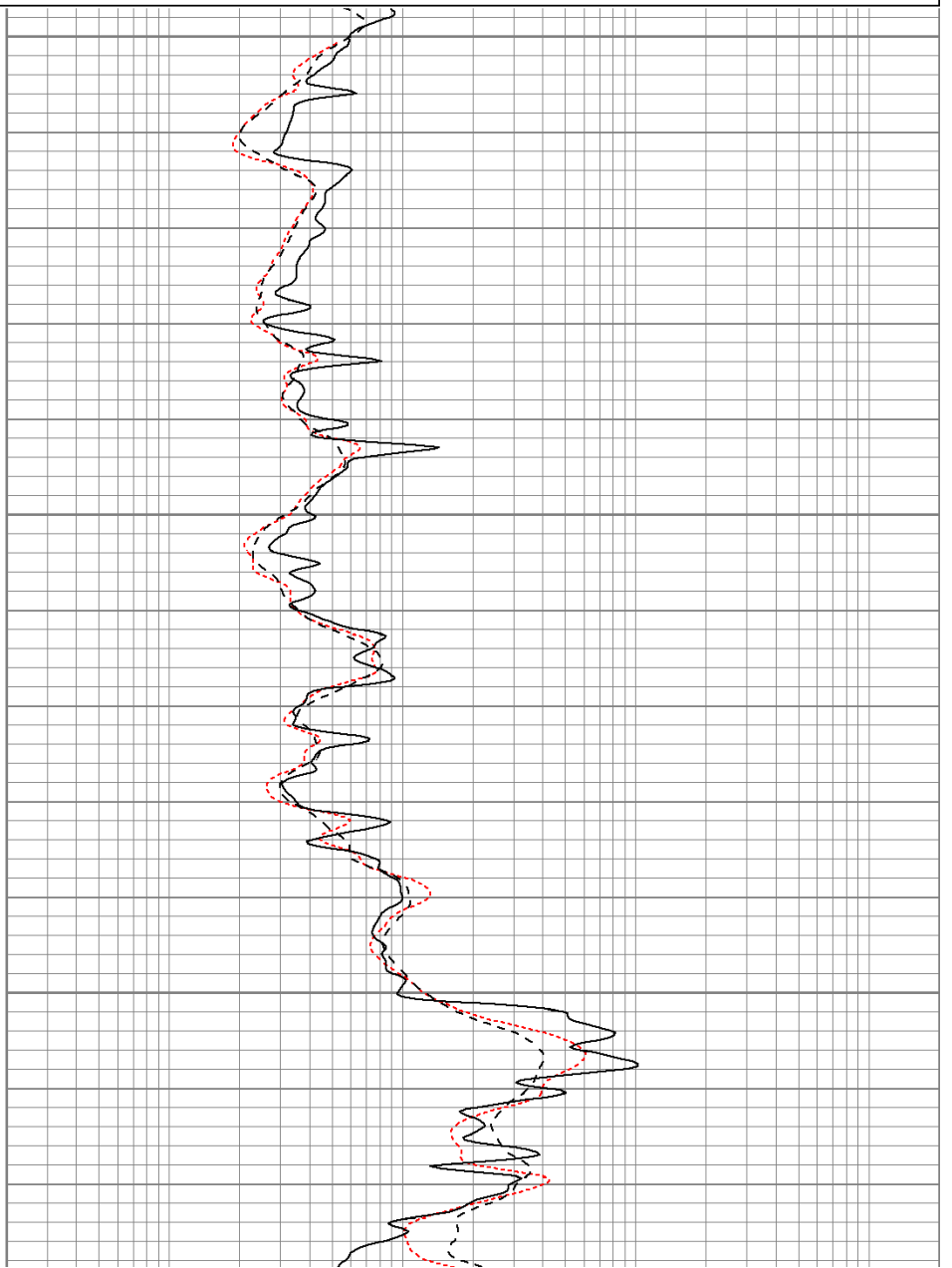
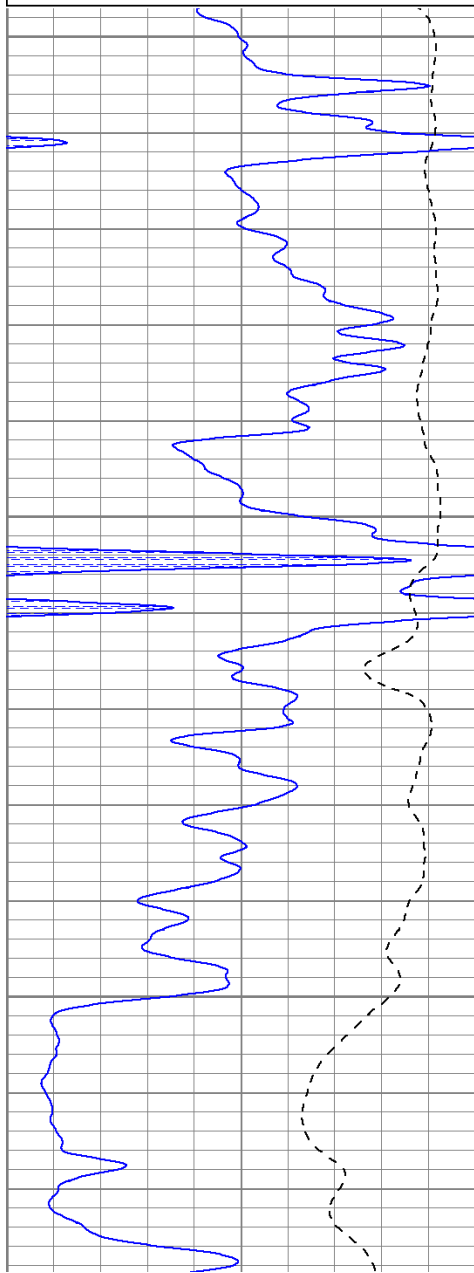


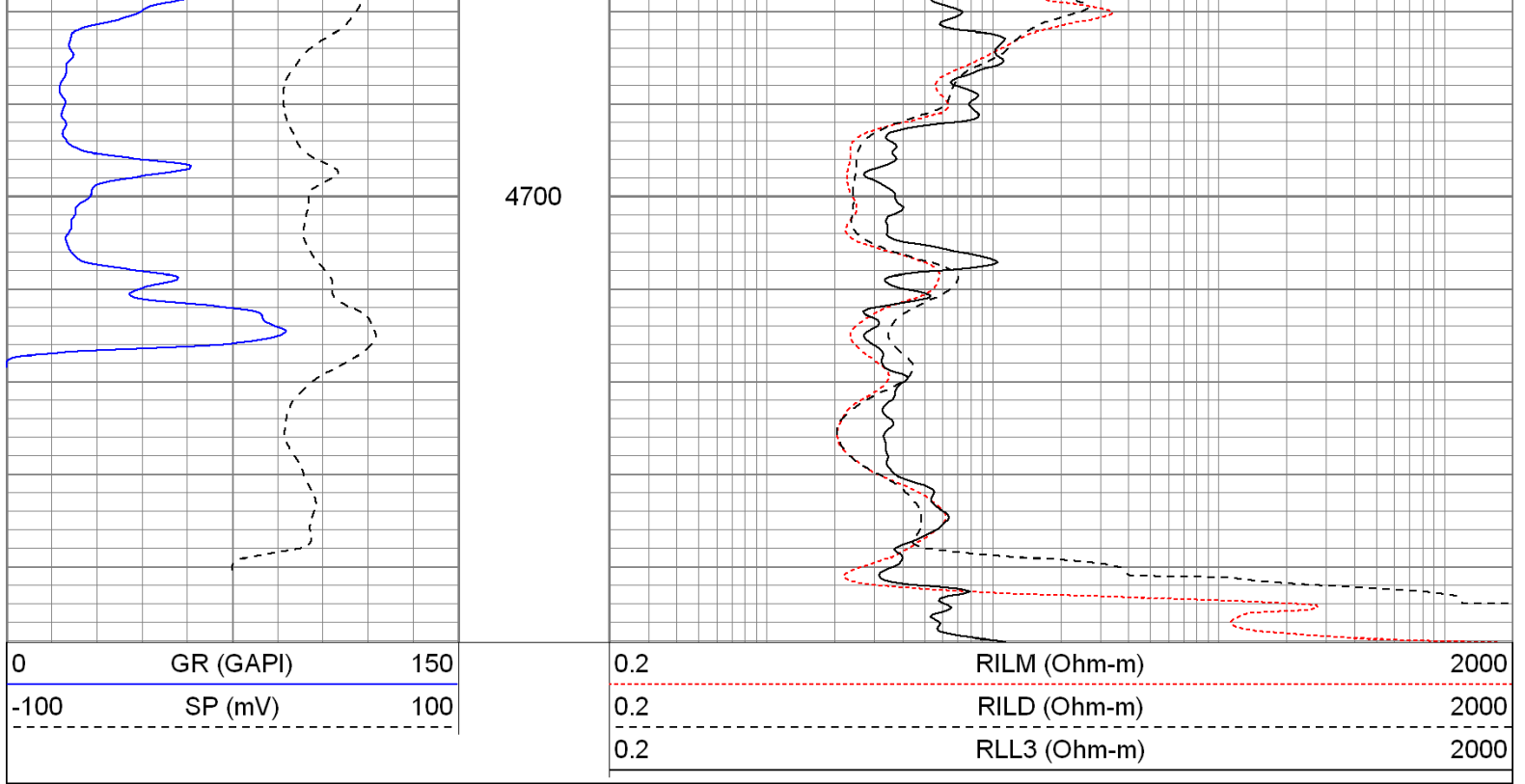
# Repeat Pass

Database File: cggates#2.db  
 Dataset Pathname: pass3  
 Presentation Format: kdil  
 Dataset Creation: Sun May 08 07:17:17 2011 by Log Open-Cased 100827  
 Charted by: Depth in Feet scaled 1:240

0	GR (GAPI)	150
-100	SP (mV)	100

0.2	RILM (Ohm-m)	2000
0.2	RILD (Ohm-m)	2000
0.2	RLL3 (Ohm-m)	2000





### Calibration Report

Database File: cggates#2.db  
 Dataset Pathname: pass3  
 Dataset Creation: Sun May 08 07:17:17 2011 by Log Open-Cased 100827

### Dual Induction Calibration Report

Serial-Model: 080522-Probe  
 Surface Cal Performed: Fri Apr 29 21:50:46 2011  
 Downhole Cal Performed: Fri Apr 29 21:50:49 2011  
 After Survey Verification Performed: Tue Mar 15 11:48:43 2011

#### Surface Calibration

Loop:	Readings			References			Results	
	Air	Loop		Air	Loop		m	b
Deep	-0.000	0.638	V	0.000	400.000	mmho/m	626.857	0.275
Medium	0.001	0.741	V	0.000	464.000	mmho/m	626.953	-0.823
Internal:	Zero	Cal		Zero	Cal		m	b
Deep	0.000	0.638	V	0.000	400.000	mmho/m	627.013	-0.291
Medium	0.001	0.741	V	0.000	464.000	mmho/m	627.190	-0.915

#### Downhole Calibration

	Readings			References			Results	
	Zero	Cal		Zero	Cal		m'	b'
Deep	0.096	400.608	mmho/m	0.566	400.467	mmho/m	0.998	0.471
Medium	-0.069	464.142	mmho/m	0.092	463.916	mmho/m	0.999	0.161
LL3		7.358	V		750.000	Ohm-m		
		0.001	V		12.000	Ohm-m		
		-7.218	V		3745.000	mmho-m		

### Compensated Density Calibration Report

Serial-Model: 2501DHT-DHT  
 Source / Verifier: /

Master Calibration

	Density		Far Detector	Near Detector	
Magnesium	1.750	g/cc	733.13	288.65	cps
Aluminum	2.670	g/cc	138.45	188.57	cps
Spine Angle = 75.67			Density/Spine Ratio = 0.535		
	Size		Reading		
Small Ring	7.70	in	6064.22		
Large Ring	14.00	in	10296.80		

Gamma Ray Calibration Report

Serial Number:	2000		
Tool Model:	P2000		
Performed:	Mon Apr 11 04:05:46 2011		
Calibrator Value:	1.0	GAPI	
Background Reading:	0.0	cps	
Calibrator Reading:	1.0	cps	
Sensitivity:	0.2200	GAPI/cps	

Neutron Calibration Report

Serial Number:	5108		
Tool Model:	PROBE		
Performed:	Mon Mar 28 13:28:28 2011		
Calibrator Value:	1	NAPI	
Calibrator Reading:	1	cps	
Sensitivity:	1	NAPI/cps	

Sensor	Offset (ft)	Schematic	Description	Len (ft)	OD (in)	Wt (lb)	
NEU	37.96		None	0.75	1.50	5.00	
			NEU-PROBE (5108) Probe	4.92	3.63	85.00	
GR	32.57		GR-P2000 (2000)	3.67	3.25	40.00	
			CDL-DHT (2501DHT) Digital High Temp CDL Tool	9.69	4.00	201.00	
LSD	23.78						
DCAL	23.49						
SSD	23.24						
HEADVOLT	21.47						
CILD	10.60			DIL-Probe (080522) Probe Dual Induction	21.47	4.00	345.00
SP	10.60						

CILM	6.89				
RLL3	1.70				
<p>Dataset: cggates#2.db: field/well/run1/pass3  Total Length: 40.49 ft  Total Weight: 676.00 lb  O.D. 4.00 in</p>					