



**SUPERIOR
Hays,
Kansas**

**COMPENSATED
DENSITY / NEUTRON
PE LOG**

Company LARIO OIL & GAS COMPANY
Well THIES RANCH #2-33
Field
County GOVE
State KANSAS

Company LARIO OIL & GAS COMPANY
Well THIES RANCH #2-33
Field
County GOVE State KANSAS

Location: API #: 15-063-21912
1985' FNL & 1785' FWL
SEC 33 TWP 14S RGE 31W
Permanent Datum GROUND LEVEL Elevation 2644
Log Measured From KELLY BUSHING 8' A.G.L.
Drilling Measured From KELLY BUSHING
Other Services
DIL
SONIC/MEL
Elevation
K.B. 2652
D.F.
G.L. 2644

Date	5-30-11
Run Number	ONE
Depth Driller	4450
Depth Logger	4450
Bottom Logged Interval	4426
Top Log Interval	3200
Casing Driller	259
Casing Logger	259
Bit Size	7.875
Type Fluid in Hole	CHEMICAL MUD
Density / Viscosity	9.3 / 44
pH / Fluid Loss	9.5 / 8.8
Source of Sample	FLOWLINE
Rm @ Meas. Temp	0.65 @ 82F
Rmf @ Meas. Temp	0.49 @ 82F
Rmc @ Meas. Temp	0.78 @ 82F
Source of Rmf / Rmc	MEASURED
Rm @ BHT	.450 @ 119F
Time Circulation Stopped	3 HOURS
Time Logger on Bottom	1:00 P.M.
Maximum Recorded Temperature	119F
Equipment Number	836
Location	HAYS, KS.
Recorded By	RUPP
Witnessed By	LARRY FRIEND

<<< Fold Here >>>

All interpretations are opinions based on inferences from electrical or other measurements and we cannot and do not guarantee the accuracy or correctness of any interpretation, and we shall not, except in the case of gross or willful negligence on our part, be liable or responsible for any loss, costs, damages, or expenses incurred or sustained by anyone resulting from any interpretation made by any of our officers, agents or employees. These interpretations are also subject to our general terms and conditions set out in our current Price Schedule.

Comments

SUPERIOR WELL SERVICES
785-628-6395
THANK YOU FOR YOUR BUSINESS
DIRECTIONS: OAKLEY, 20S TO JAYHAWK RD., 4E, 2S, 3/4E, S & W INTO.

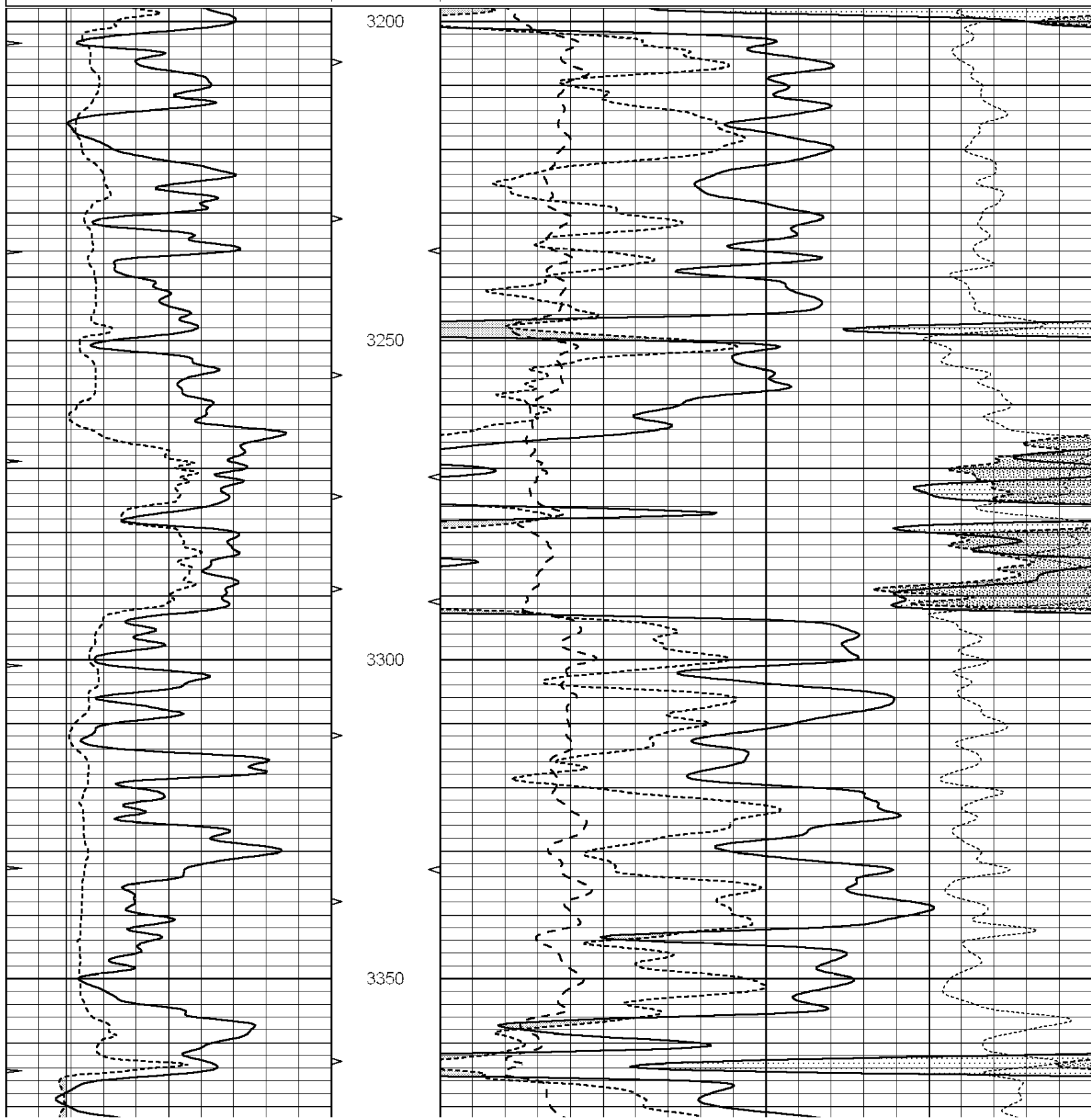


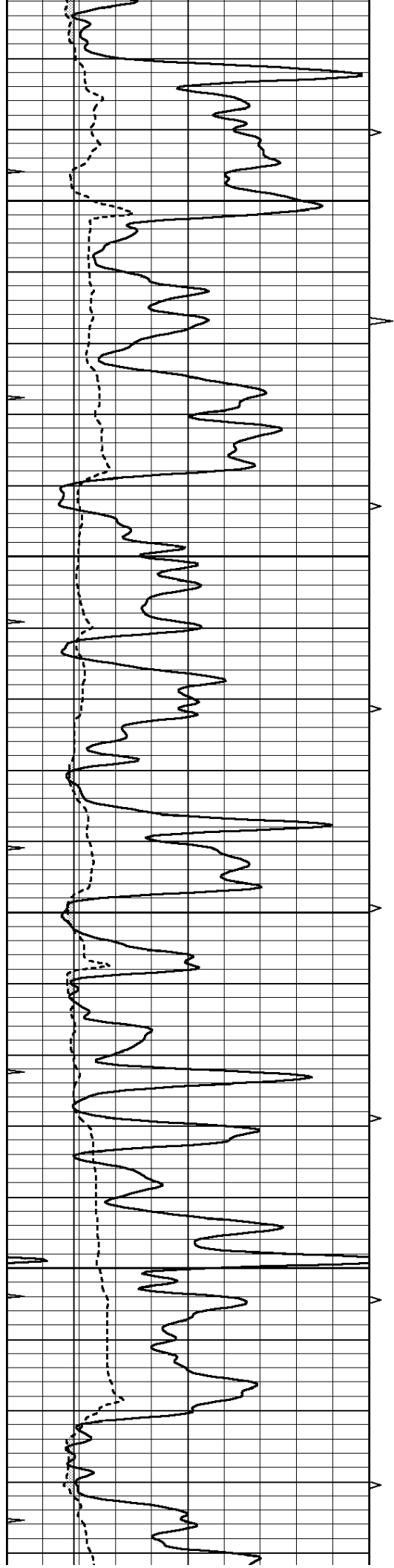
**SUPERIOR
Hays,
Kansas**

MAIN SECTION

Database File: 006927pdr.db
 Dataset Pathname: pass3.1
 Presentation Format: ldt_neu
 Dataset Creation: Mon May 30 15:52:08 2011 by Calc Open-Cased 090629
 Charted by: Depth in Feet scaled 1:240

0	GAMMA RAY (GAPI)	150	ABHV	30	COMPENSATED DENSITY (pu)		-10
6	CALIPER (in)	16	10 (ft3)	0	COMPENSATED NEUTRON (pu)		-10
0	MINMK	20	TBHV	0	PE	10	-0.25 CORRECTION (g/cc) 0.25
			0 (ft3)	10			



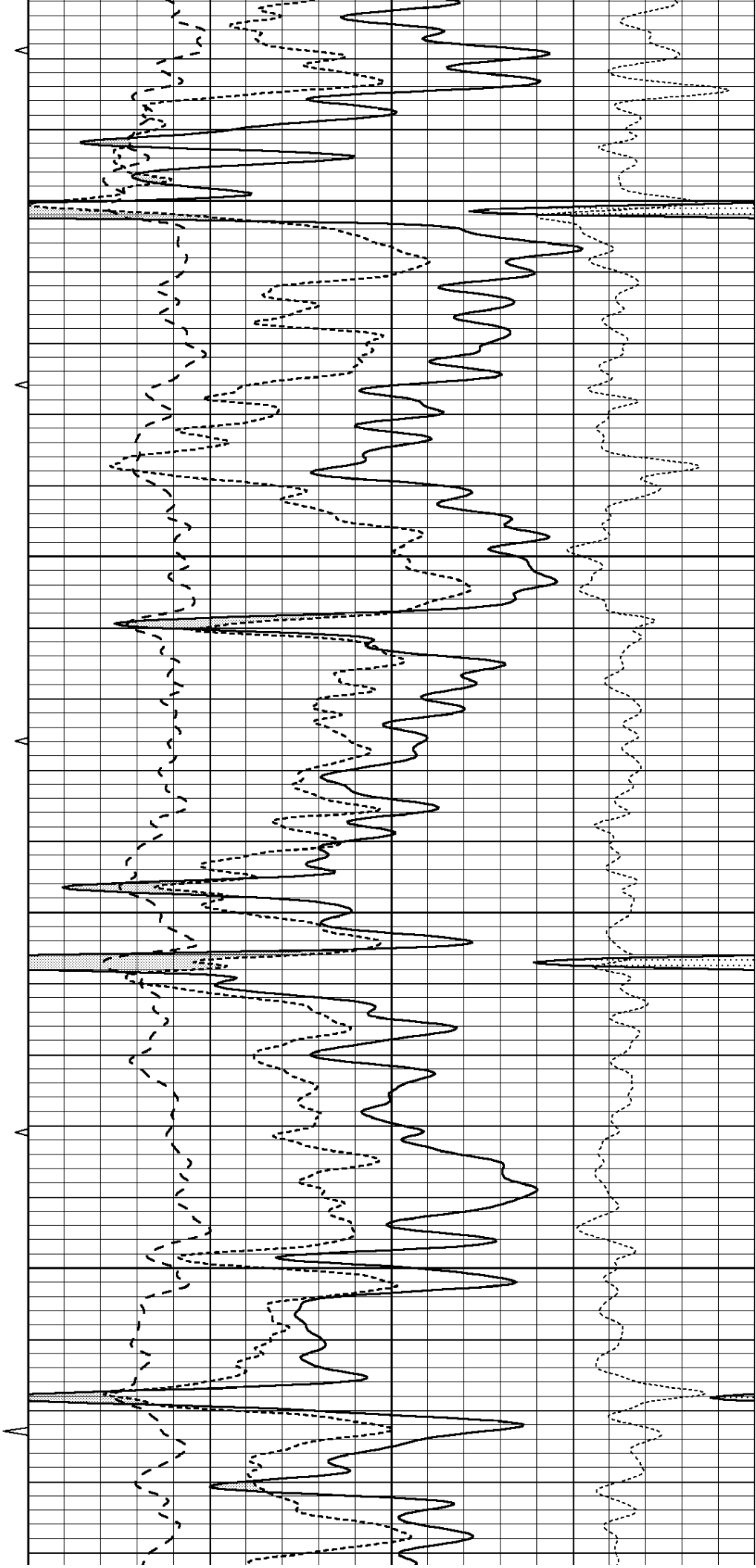


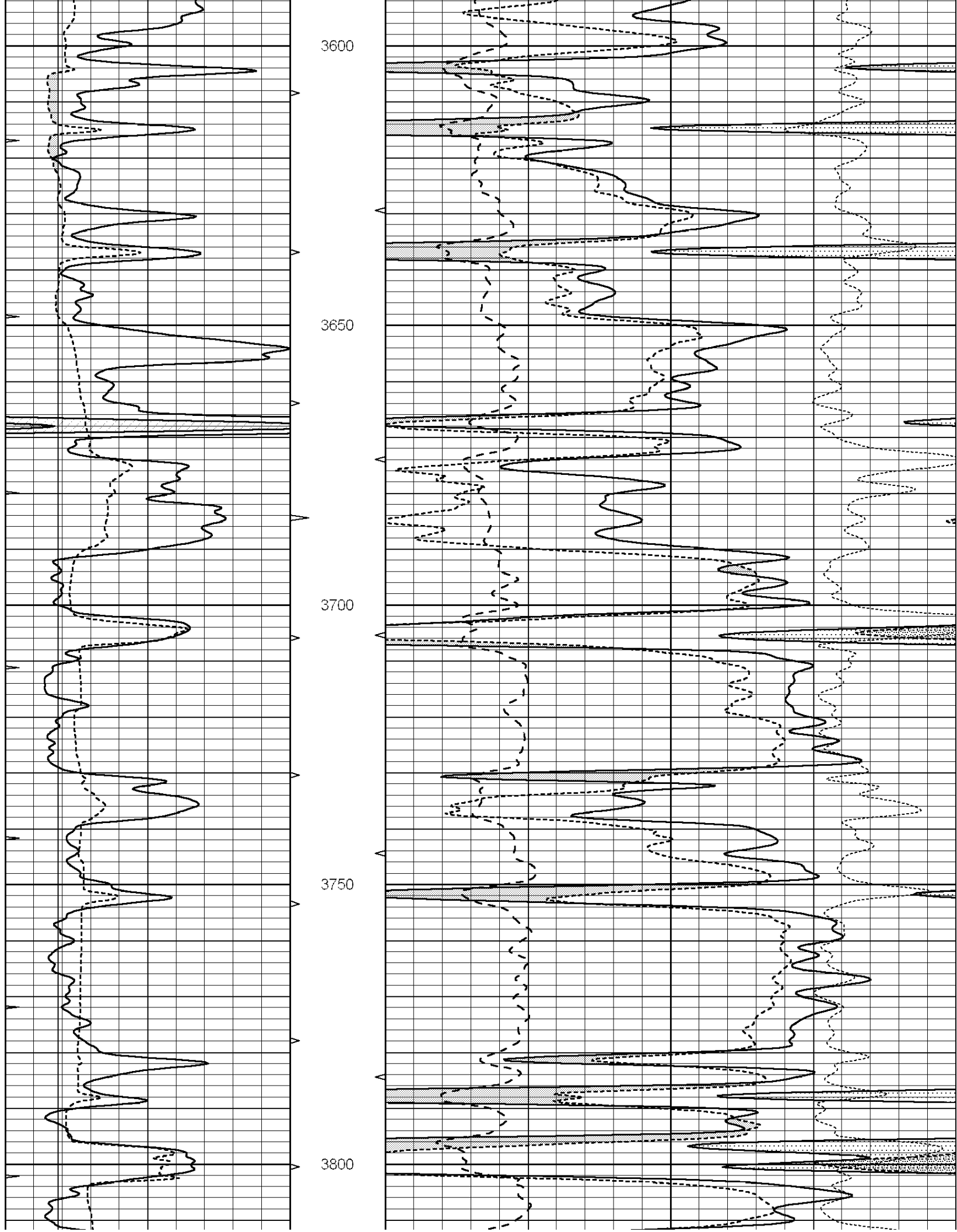
3400

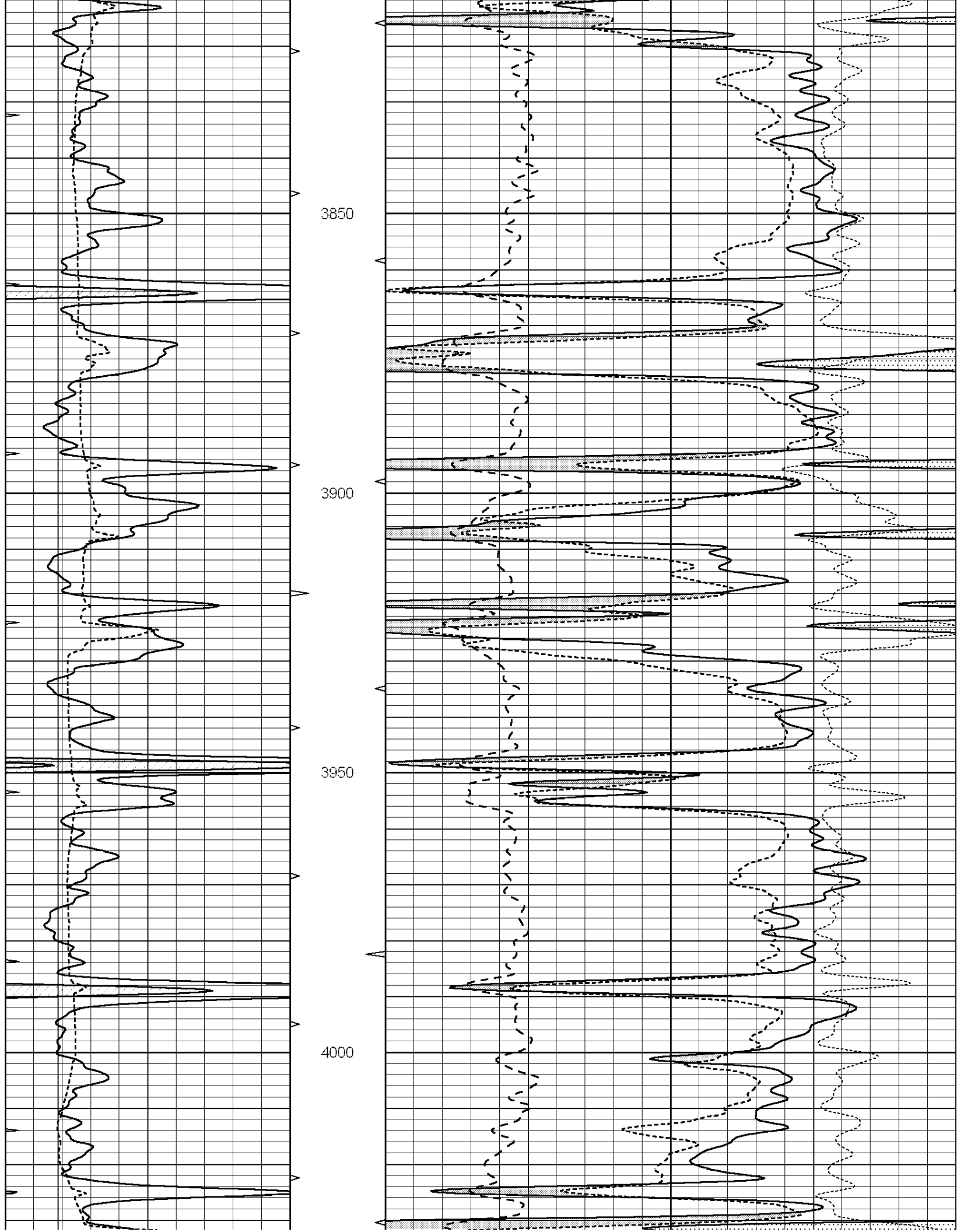
3450

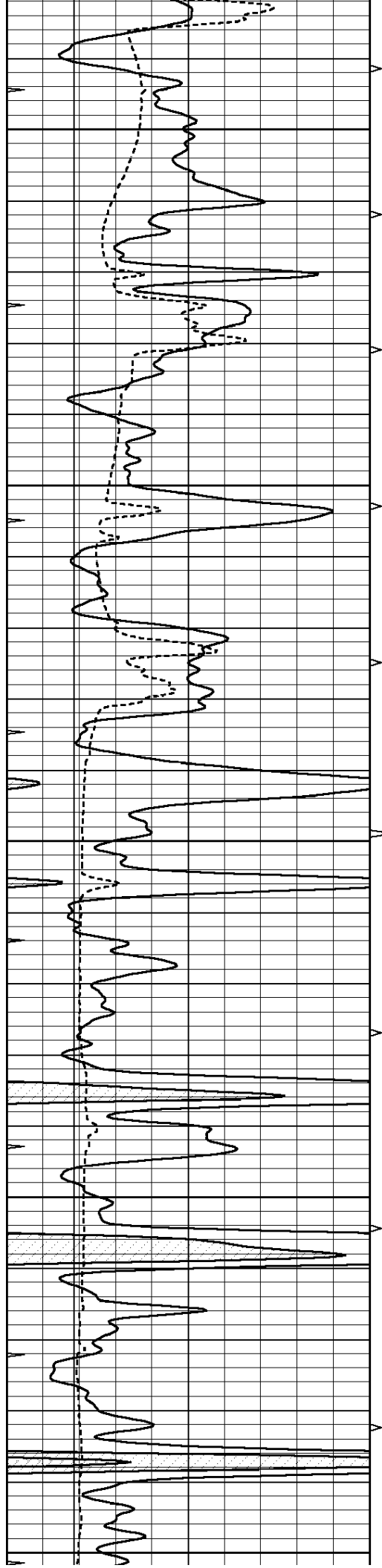
3500

3550









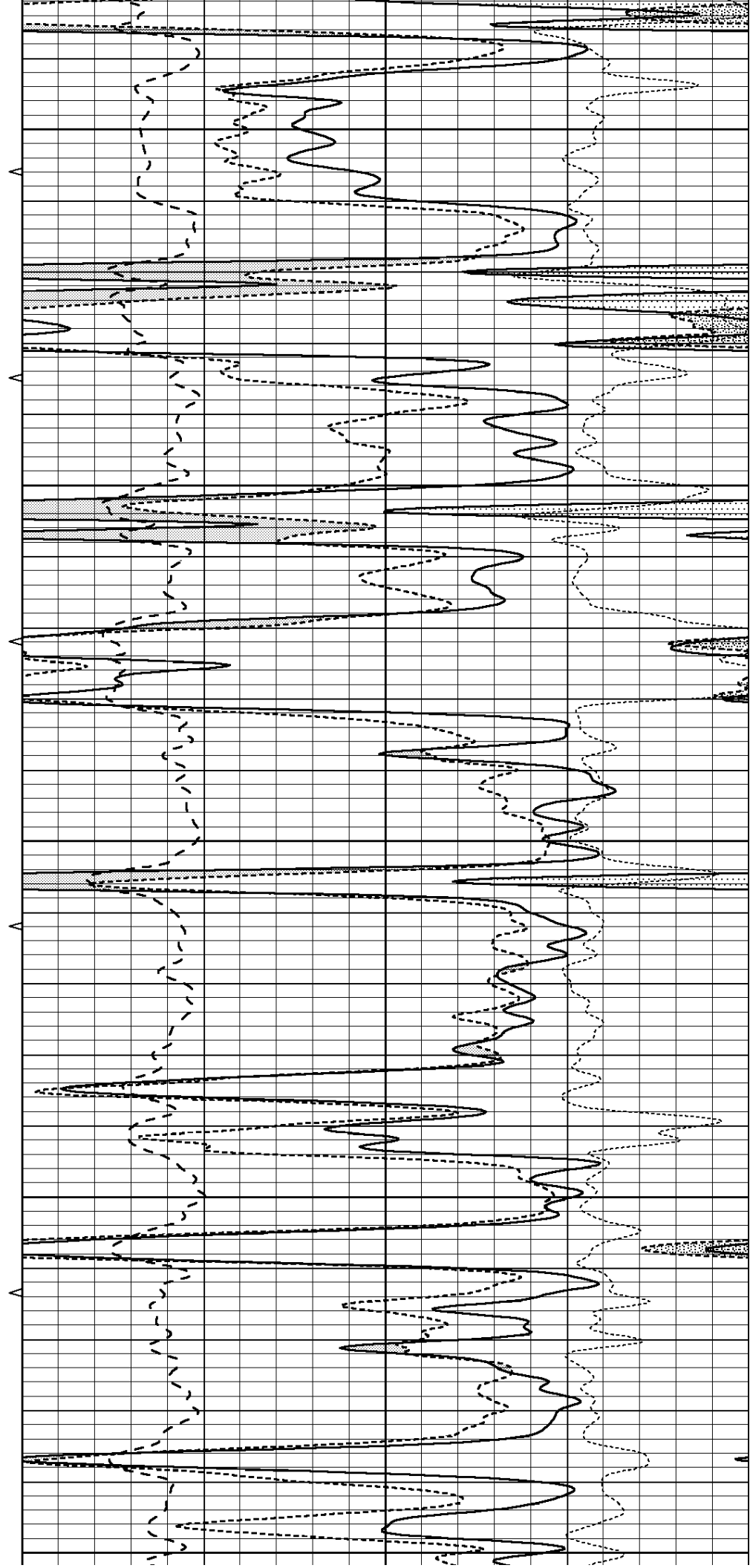
4050

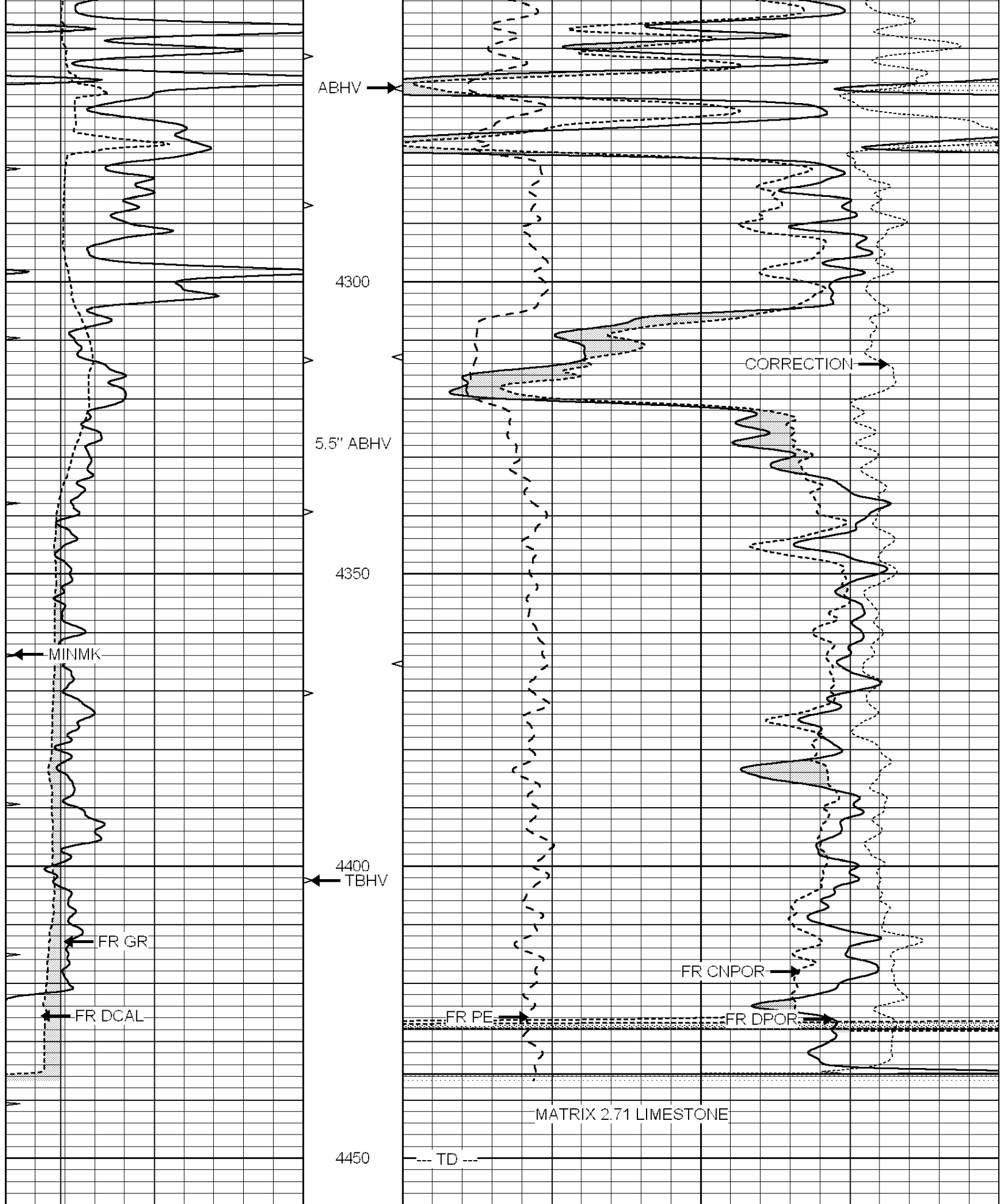
4100

4150

4200

4250





0	GAMMA RAY (GAPI)	150	ABHV	30	COMPENSATED DENSITY (pu)	-10
6	CALIPER (in)	16 10 (ft3)	0 30	30	COMPENSATED NEUTRON (pu)	-10
0	MINMK	20	TBHV	0	PE	10-0.25
					CORRECTION (a/cc)	0.25

MATRIX 2.71 LIMESTONE

--- TD ---

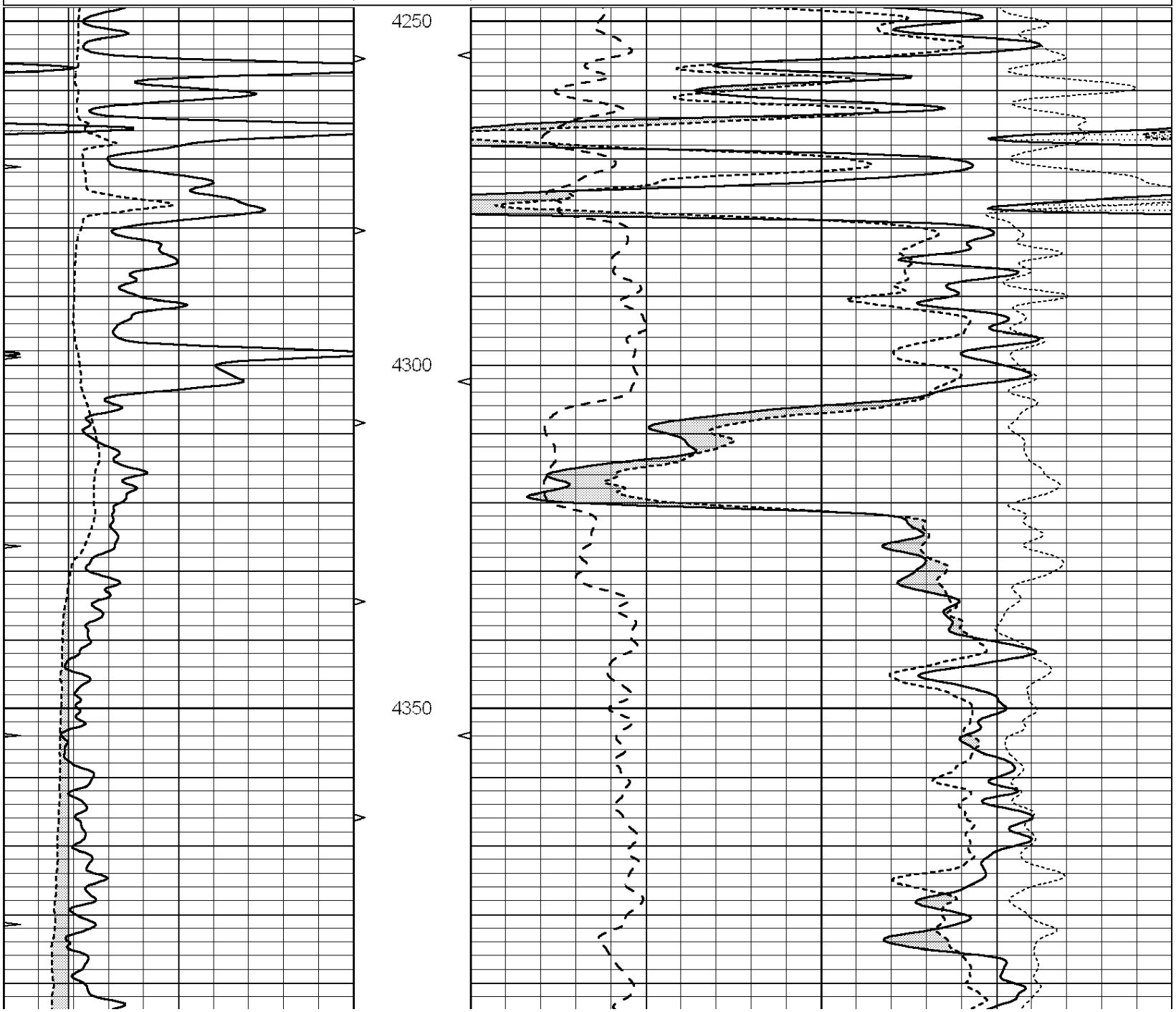


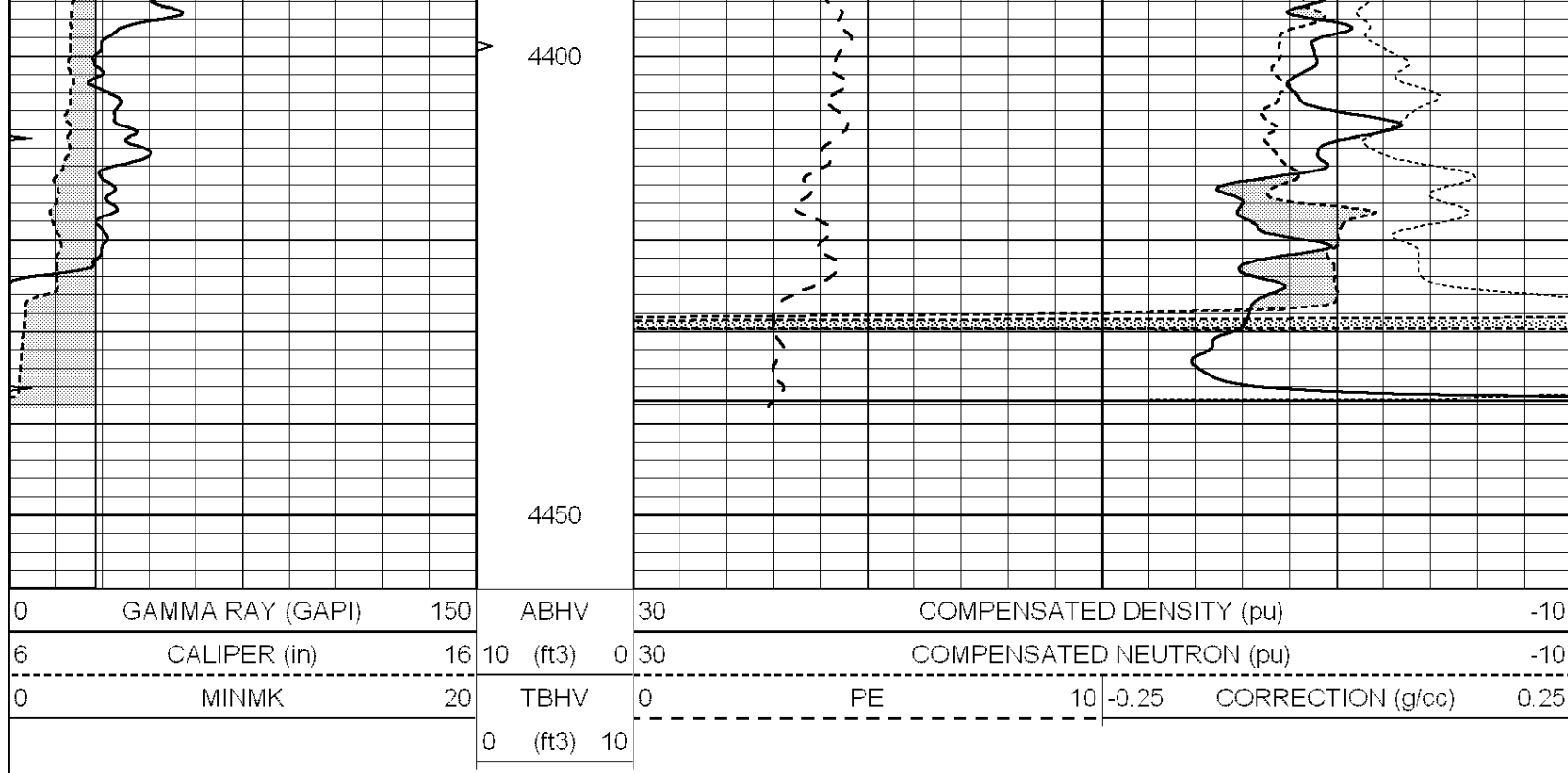
SUPERIOR
Hays,
Kansas

REPEAT SECTION

Database File: 006927pdr.db
 Dataset Pathname: pass2.1A
 Presentation Format: ldt_neu
 Dataset Creation: Mon May 30 16:21:02 2011
 Charted by: Depth in Feet scaled 1:240

0	GAMMA RAY (GAPI)	150	ABHV	30	COMPENSATED DENSITY (pu)	-10
6	CALIPER (in)	16	10 (ft3) 0	30	COMPENSATED NEUTRON (pu)	-10
0	MINMK	20	TBHV	0	PE	10 -0.25 CORRECTION (g/cc) 0.25
			0 (ft3) 10			





Calibration Report

Database File: 006927pdn.db
 Dataset Pathname: pass3.1
 Dataset Creation: Mon May 30 15:52:08 2011 by Calc Open-Cased 090629

Dual Induction Calibration Report

Serial-Model: DIL5-GEAR
 Performed: Mon May 30 14:26:29 2011

Loop:	Readings			References			Results	
	Air	Loop		Air	Loop		m	b
Deep	0.004	0.654	V	0.000	400.000	mmho/m	540.000	-8.000
Medium	-0.005	0.737	V	0.000	462.500	mmho/m	500.000	-16.000
Internal:	Zero	Cal		Zero	Cal		m	b
Deep	0.006	0.655	V	0.000	400.000	mmho/m	615.668	-3.483
Medium	0.010	0.747	V	0.000	462.500	mmho/m	627.607	-6.064

Litho Density Calibration Report

Serial: 002 Model: PRB
 Performed Tue Jul 03 11:12:28 2007

Litho Density Calibration

	Background	Magnesium	Aluminum	Sandstone	
Window 1	1059.5	9172.0	2859.6	10210.6	cps
Window 2	976.0	7793.2	2486.1	8515.6	cps
Window 3	689.8	2930.5	1159.0	3096.2	cps
Window 4	231.9	237.2	231.1	234.0	cps
Long Space	0.0	6817.1	1510.1	7539.6	cps
Short Space	1.6	1758.1	1188.6	1898.8	cps
Rho		1.7100	2.5960	1.3800	g/cc
Pe			2.5700	1.5500	

Rib Angle : 45.4 Rib Slope : 1.015 Density/Spine Ratio : 0.569
 Spine Angle : 75.4 Spine Slope : 3.850 Spine Intercept : 19.9

Epine Angle : 75.4 Epine Slope : 5.655 Epine Intercept : -15.9

Caliper	Readings	Reference	
Low Ref	3.8	8.6	
High Ref	5.9	14.0	
	Gain: 2.5		Offset: -1.0

Compensated Neutron Calibration Report

Serial Number: NUE_2I
Tool Model: G

CALIBRATION

Detector	Readings	Target	Normalization
Short Space	1.00 cps	1.00 cps	1.0000
Long Space	1.00 cps	1.00 cps	1.0000

Gamma Ray Calibration Report

Serial Number:	GR5	
Tool Model:	OPEN	
Performed:	Mon May 30 14:17:40 2011	
Calibrator Value:	1.0	GAPI
Background Reading:	0.0	cps
Calibrator Reading:	1.0	cps
Sensitivity:	0.6500	GAPI/cps