



SUPERIOR
Hays,
Kansas

MICRO
LOG

Company LARIO OIL & GAS COMPANY
Well THIES RANCH #2-33
Field
County GOVE State KANSAS

Company LARIO OIL & GAS COMPANY
Well THIES RANCH #2-33
Field
County GOVE
State KANSAS

Location: API #: 15-063-21912
1985' FNL & 1785' FWL
SEC 33 TWP 14S RGE 31W
Permanent Datum GROUND LEVEL Elevation 2644
Log Measured From KELLY BUSHING 8' A.G.L.
Drilling Measured From KELLY BUSHING
Other Services
CDL/CNL/PE
DIL/SONIC
Elevation
K.B. 2652
D.F.
G.L. 2644

Date	5-30-11
Run Number	TW0
Depth Driller	4450
Depth Logger	4450
Bottom Logged Interval	4433
Top Log Interval	3200
Casing Driller	259
Casing Logger	259
Bit Size	7.875
Type Fluid in Hole	CHEMICAL MUD
Density / Viscosity	9.3 / 44
pH / Fluid Loss	9.5 / 8.8
Source of Sample	FLOWLINE
Rm @ Meas. Temp	0.65 @ 82F
Rmf @ Meas. Temp	0.49 @ 82F
Rmc @ Meas. Temp	0.78 @ 82F
Source of Rmf / Rmc	MEASURED
Rm @ BHT	.450 @ 119F
Time Circulation Stopped	3 HOURS
Time Logger on Bottom	1:00 P.M.
Maximum Recorded Temperature	119F
Equipment Number	836
Location	HAYS, KS.
Recorded By	RUPP
Witnessed By	LARRY FRIEND

<<< Fold Here >>>

All interpretations are opinions based on inferences from electrical or other measurements and we cannot and do not guarantee the accuracy or correctness of any interpretation, and we shall not, except in the case of gross or willful negligence on our part, be liable or responsible for any loss, costs, damages, or expenses incurred or sustained by anyone resulting from any interpretation made by any of our officers, agents or employees. These interpretations are also subject to our general terms and conditions set out in our current Price Schedule.

Comments

SUPERIOR WELL SERVICES
785-628-6395
THANK YOU FOR YOUR BUSINESS
DIRECTIONS: OAKLEY, 20S TO JAYHAWK RD., 4E, 2S, 3/4E, S & W INTO.

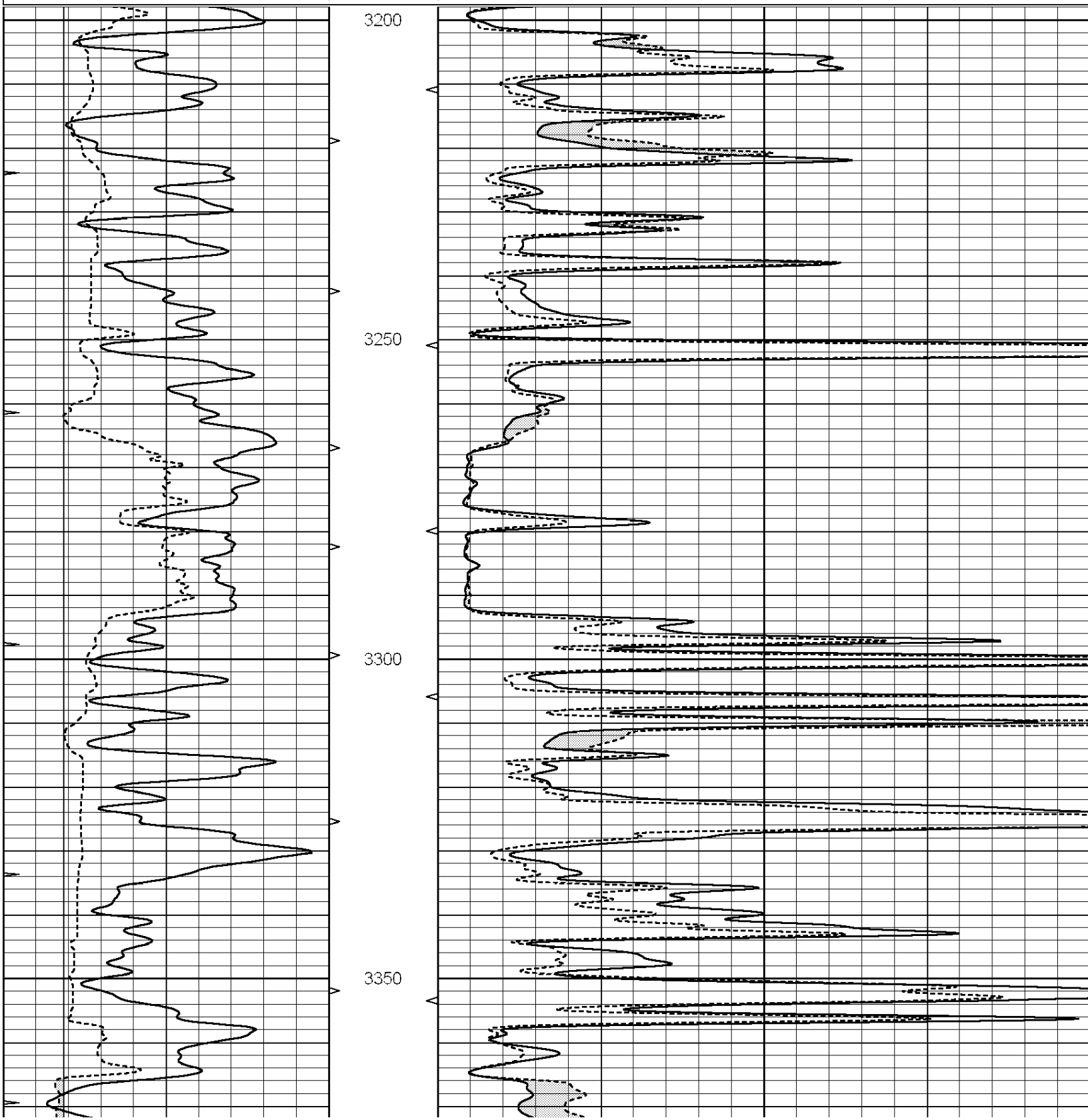


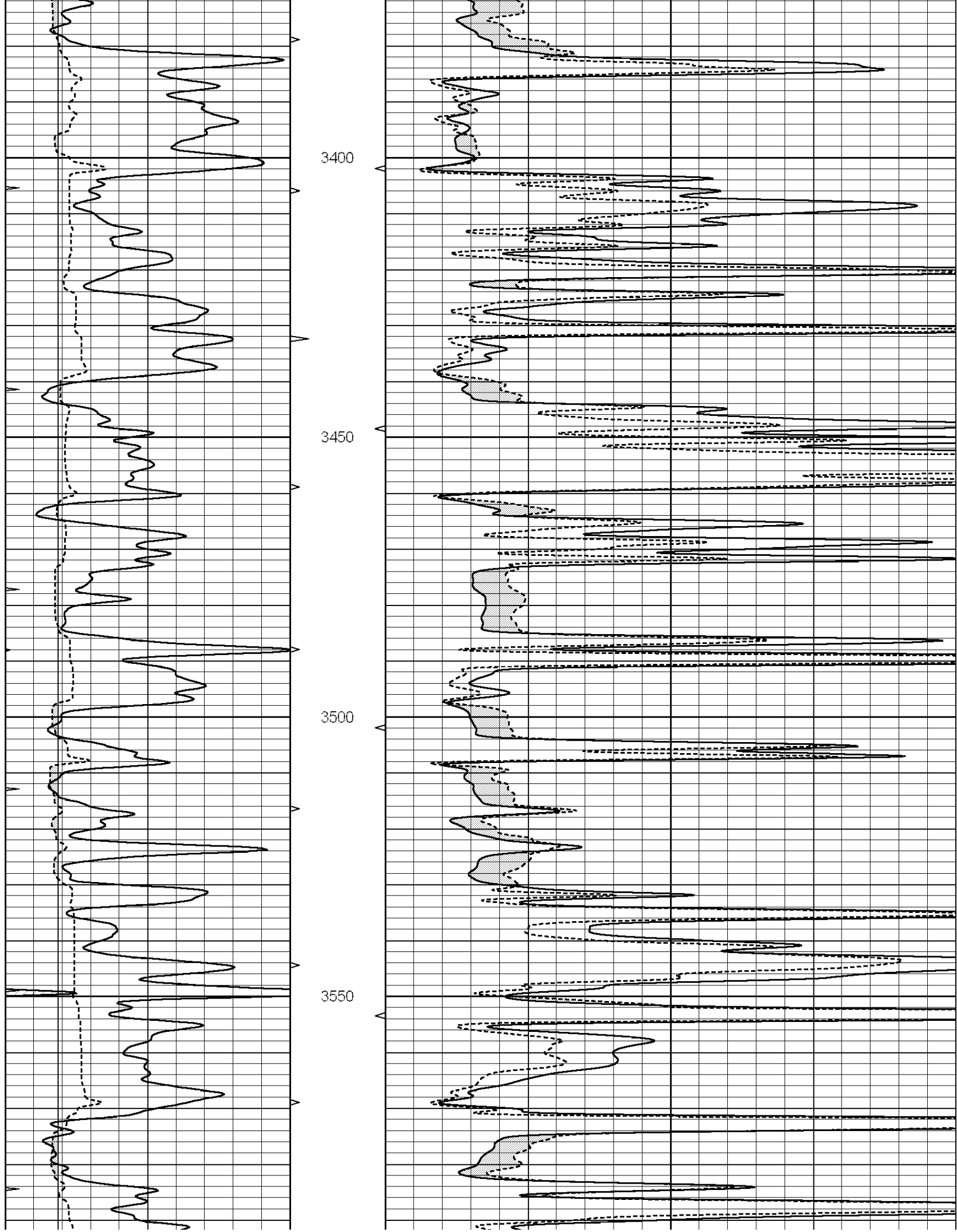
SUPERIOR
Hays,
Kansas

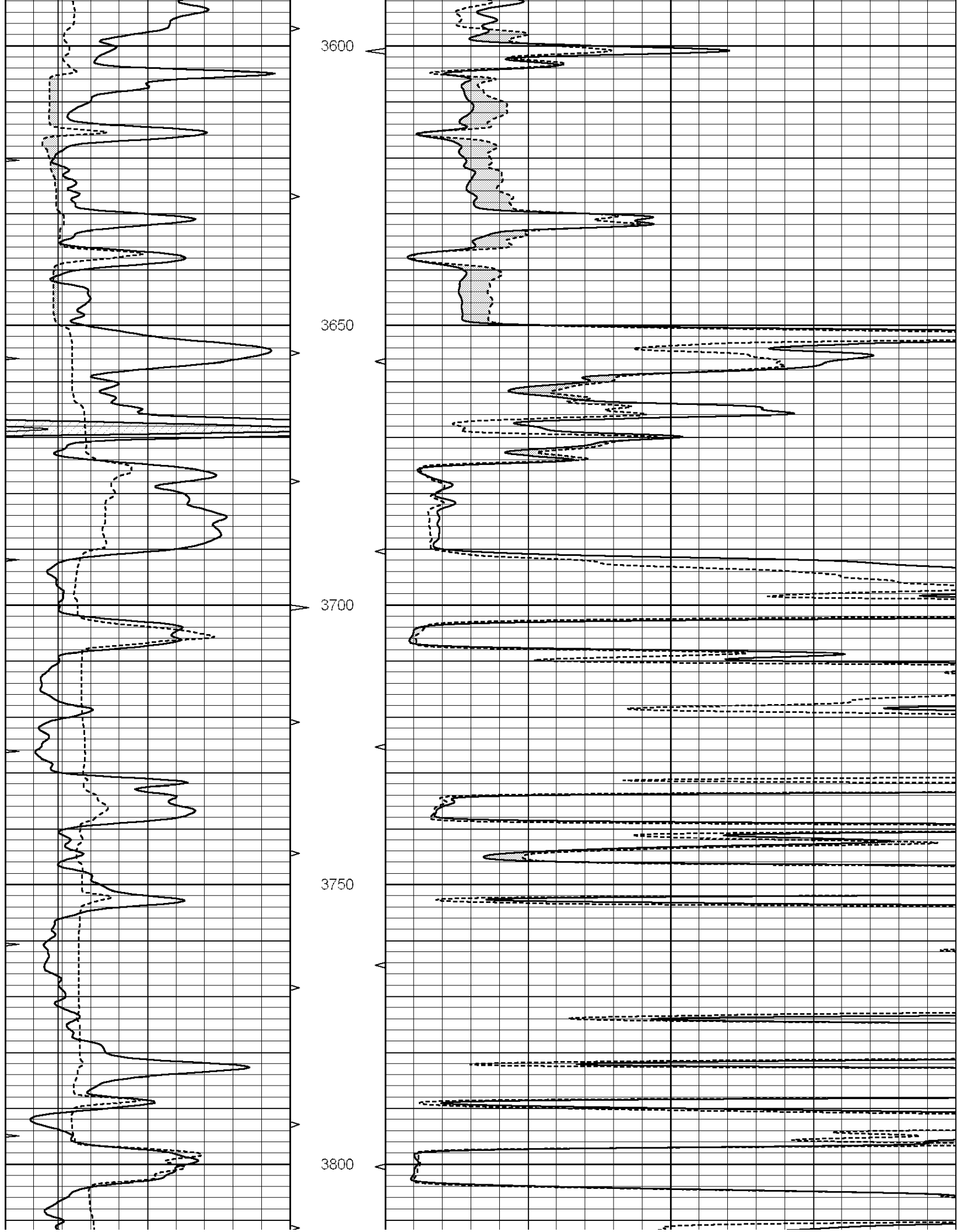
MAIN SECTION

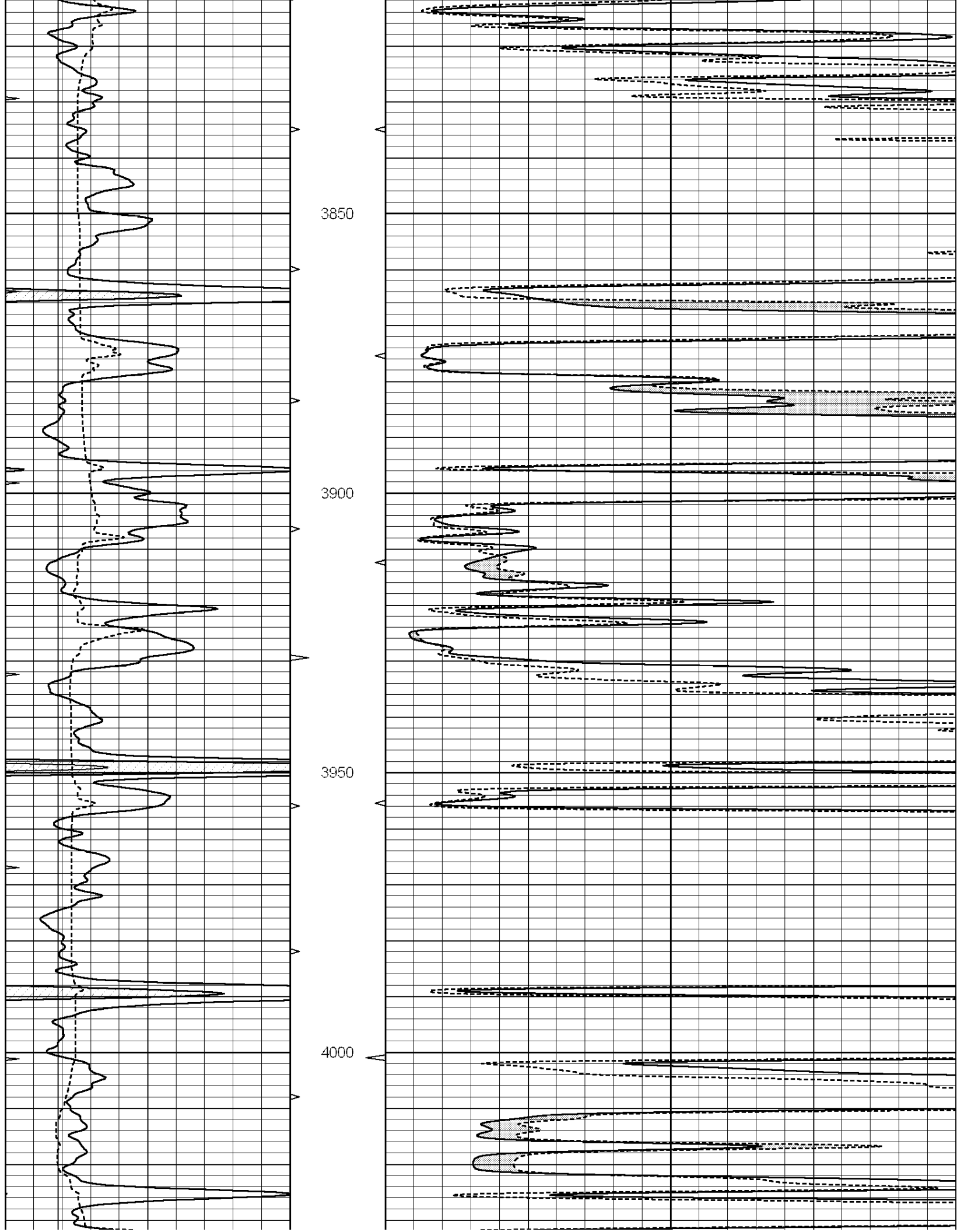
Database File: 006927pdn.db
 Dataset Pathname: pass5.1A
 Presentation Format: micro
 Dataset Creation: Mon May 30 18:23:03 2011 by Calc Open-Cased 090629
 Charted by: Depth in Feet scaled 1:240

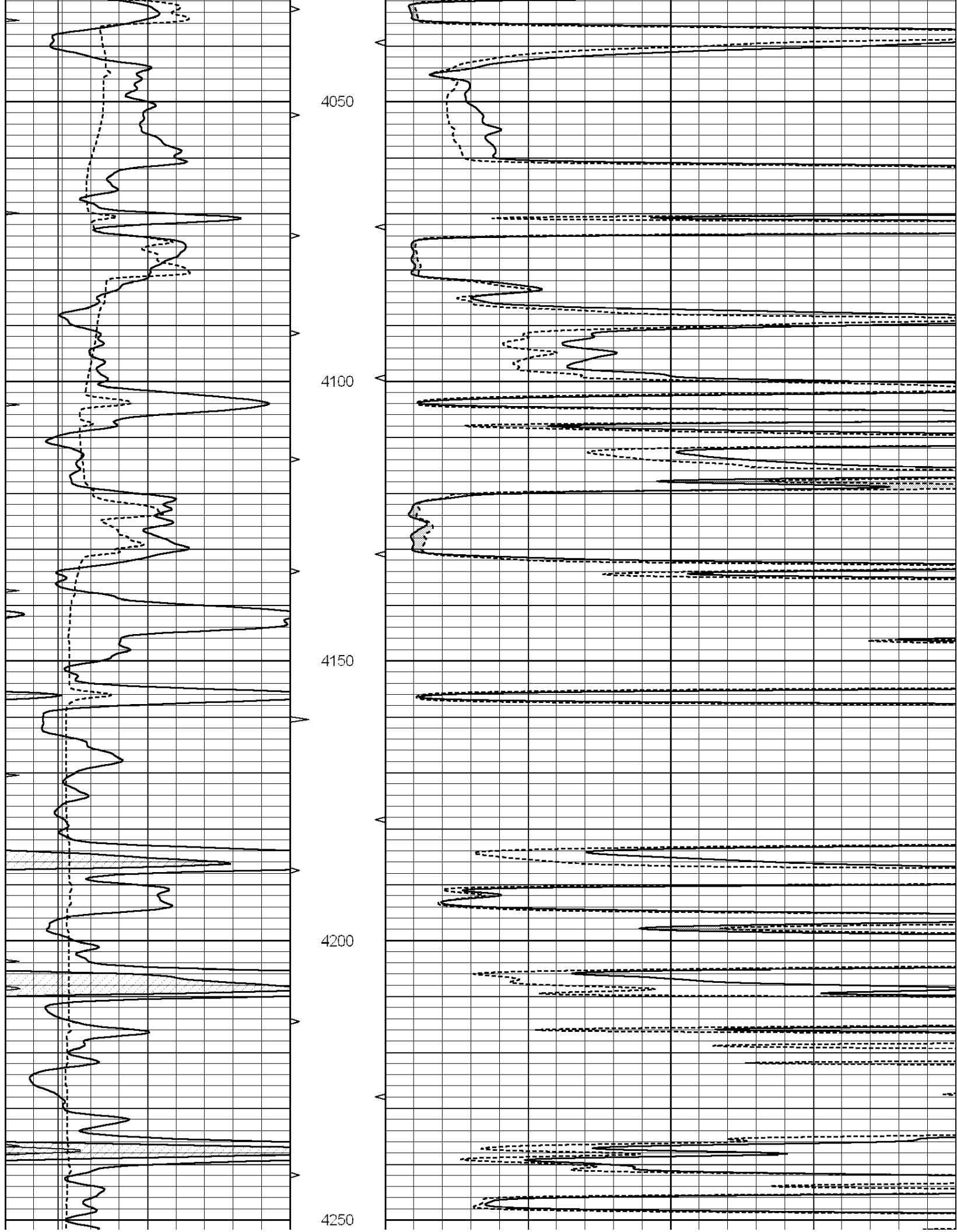
0	GAMMA RAY (GAPI)	150	ABHV	0	MEL1.5 (Ohm-m)	40
6	CALIPER (in)	16	10 (ft3)	0 0	MEL2.0 (Ohm-m)	40
0	MINMK	20	TBHV			
			0 (ft3)	10		

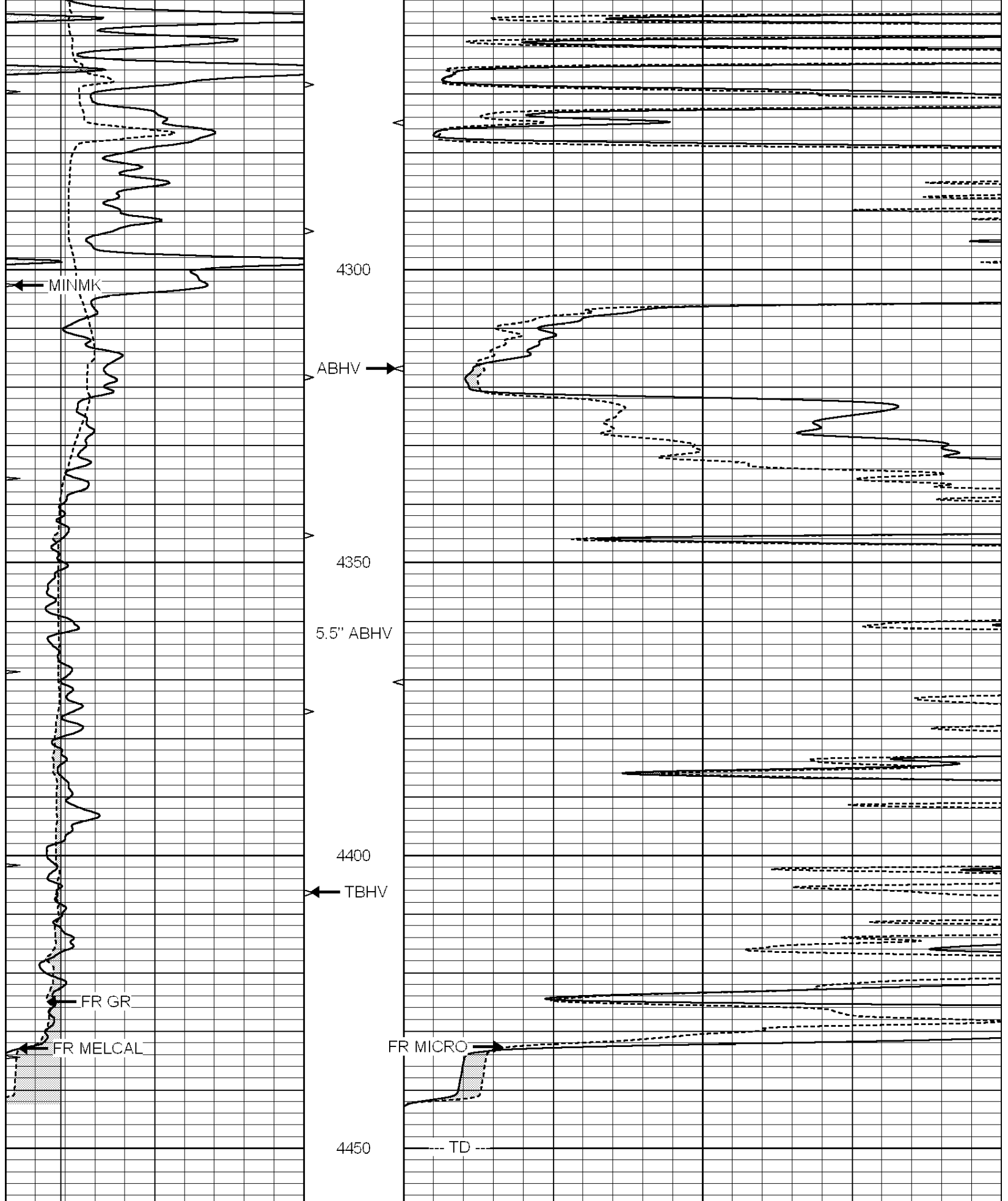












0	GAMMA RAY (GAPI)	150	ABHV	0	MEL1.5 (Ohm-m)	40
6	CALIPER (in)	16 10 (ft3)	0 0	0 0	MEL2.0 (Ohm-m)	40
0	MINMK	20	TRHV			

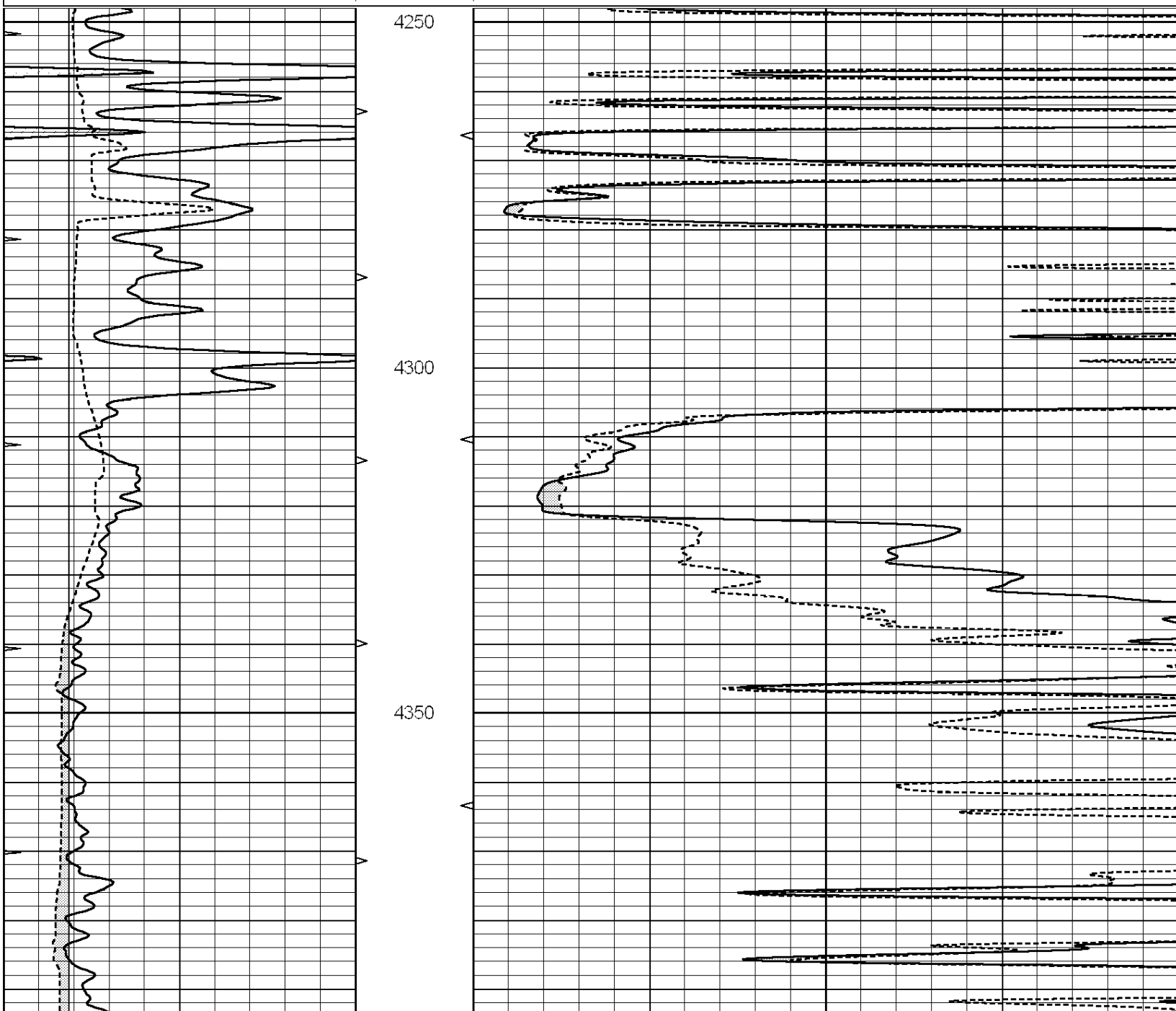


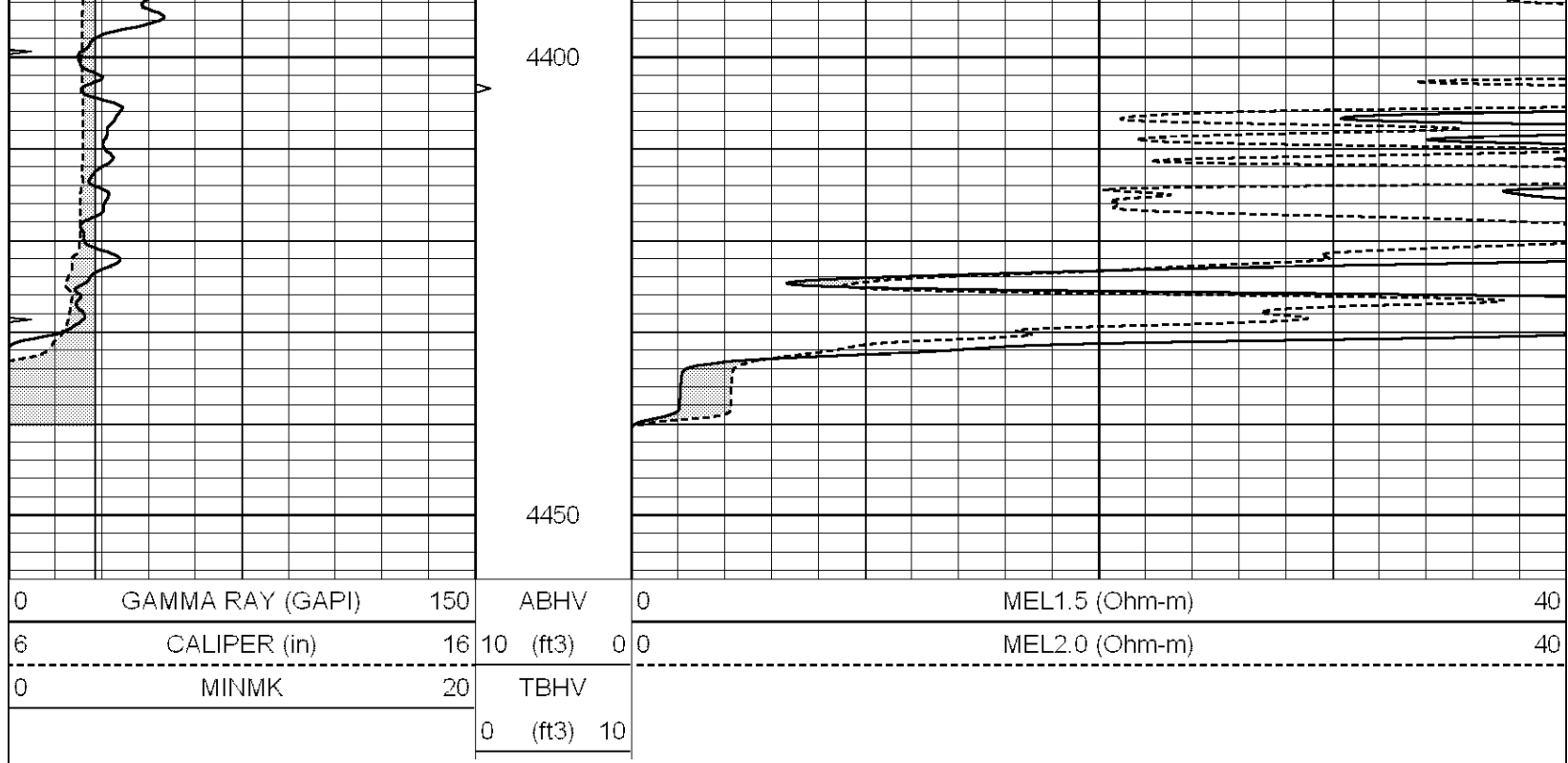
SUPERIOR
Hays,
Kansas

REPEAT SECTION

Database File: 006927pdr.db
 Dataset Pathname: pass4.1
 Presentation Format: micro
 Dataset Creation: Mon May 30 16:58:35 2011 by Calc Open-Cased 090629
 Charted by: Depth in Feet scaled 1:240

0	GAMMA RAY (GAPI)	150	ABHV	0	MEL1.5 (Ohm-m)	40
6	CALIPER (in)	16	10 (ft3)	0 0	MEL2.0 (Ohm-m)	40
0	MINMK	20	TBHV			
			0 (ft3)	10		





Calibration Report

Database File: 006927pdn.db
 Dataset Pathname: pass5.1A
 Dataset Creation: Mon May 30 18:23:03 2011 by Calc Open-Cased 090629

MICRO Calibration Report

Serial Number:	Micro1	
Tool Model:	ProbeL	
Performed:	Mon May 30 16:54:32 2011	
Caliper Calibration:	Gain=2.806	Offset=-1.473
References	Low Cal	High Cal
Readings	7.600	13.000
	3.233	5.157
1.5" Calibration:	Gain=35.000	Offset=0.000
References	Low Cal	High Cal
Readings	0.000	20.000
	0.003	0.844
2" Calibration:	Gain=34.000	Offset=-0.300
References	Low Cal	High Cal
Readings	0.000	20.000
	0.028	0.817

Gamma Ray Calibration Report

Serial Number:	GR5	
Tool Model:	OPEN	
Performed:	Mon May 30 14:17:40 2011	
Calibrator Value:	1.0	GAPI
Background Reading:	0.0	cps
Calibrator Reading:	1.0	cps
Sensitivity:	0.6500	GAPI/cps

