



DIGITAL LOG (785) 625-3858

Microresistivity Log

API No. 15-145-21,632-00-00

Company: Downing-Nelson Oil Company, Inc.  
 Well: IFS Unit No. 1-19  
 Field: Steffen Northwest  
 County: Pawnee State Kansas

Location: W2 W2 W2 W2  
 2,648' FNL & 120' FWL

Sec: 19 Twp: 20S Rge: 20W

Other Services: CNL/CDL DIL/BHCS

Permanent Datum Ground Level Elevation 2215  
 Log Measured From Kelly Bushing 8 Ft. Above Perm. Datum  
 Drilling Measured From Kelly Bushing

K.B. 2223  
 D.F. 2215  
 G.L. 2215

Date	2/25/2011
Run Number	Two
Depth Driller	4368
Depth Logger	4370
Bottom Logged Interval	4369
Top Log Interval	2100
Casing Driller	8,625 @ 522
Casing Logger	521
Bit Size	7.875
Type Fluid in Hole	Chemical
Salinity, ppm CL	5000
Density / Viscosity	9.2   51
pH / Fluid Loss	9.5   9.6
Source of Sample	Flowline
Rm @ Meas. Temp	.74 @ 44
Rmf @ Meas. Temp	.56 @ 44
Rmc @ Meas. Temp	1.00 @ 44
Source of Rmf / Rmc	Charts
Rm @ BHT	.27 @ 120
Operating Rig Time	4 1/2 Hours
Max Rec. Temp. F	120
Equipment Number	10
Location	Hays
Recorded By	J. Long
Witnessed By	Marc Downing

<<< Fold Here >>>

All interpretations are opinions based on inferences from electrical or other measurements and we cannot and do not guarantee the accuracy or correctness of any interpretation, and we shall not, except in the case of gross or willful negligence on our part, be liable or responsible for any loss, costs, damages, or expenses incurred or sustained by anyone resulting from any interpretation made by any of our officers, agents or employees. These interpretations are also subject to our general terms and conditions set out in our current Price Schedule.

Comments

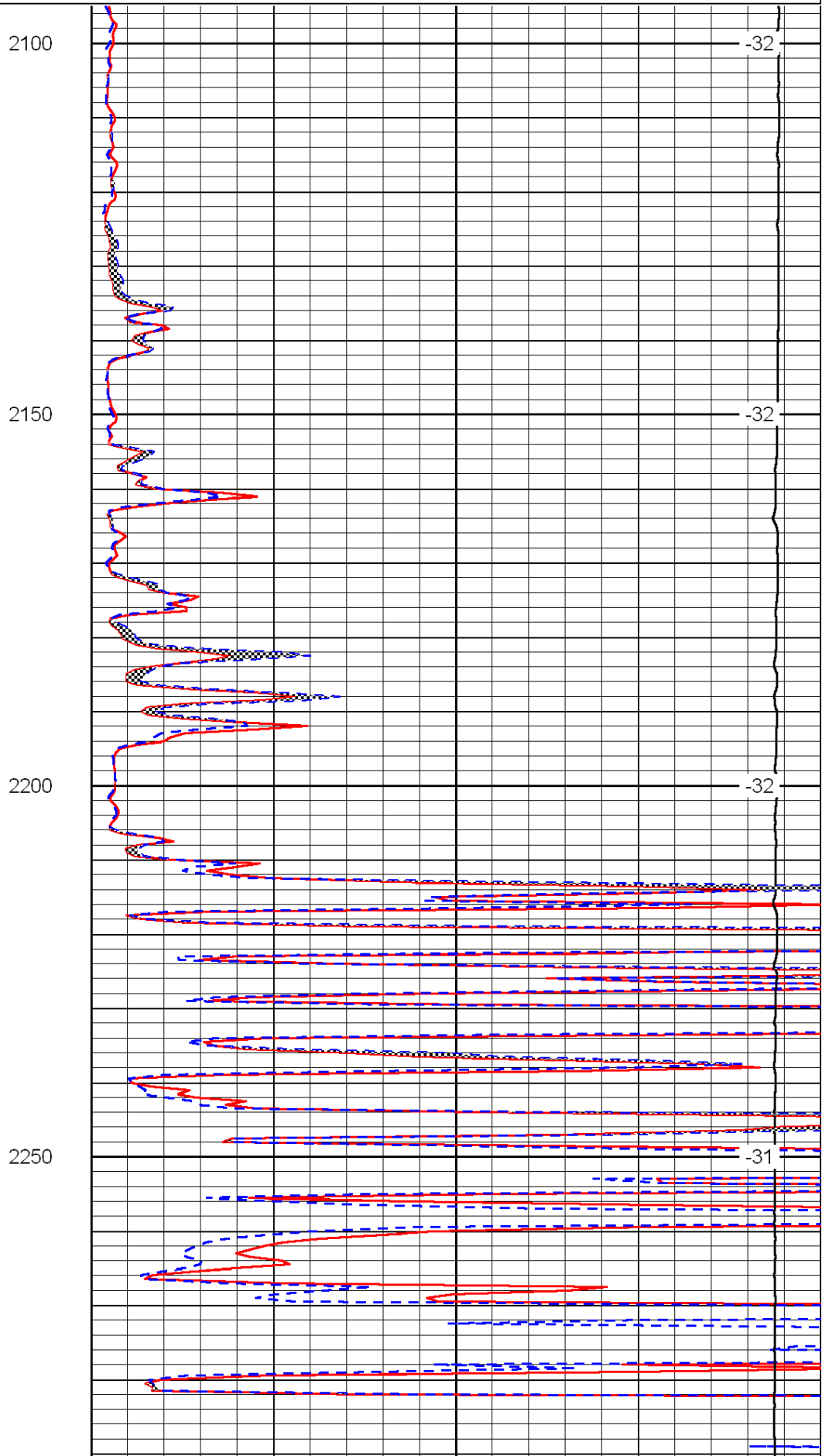
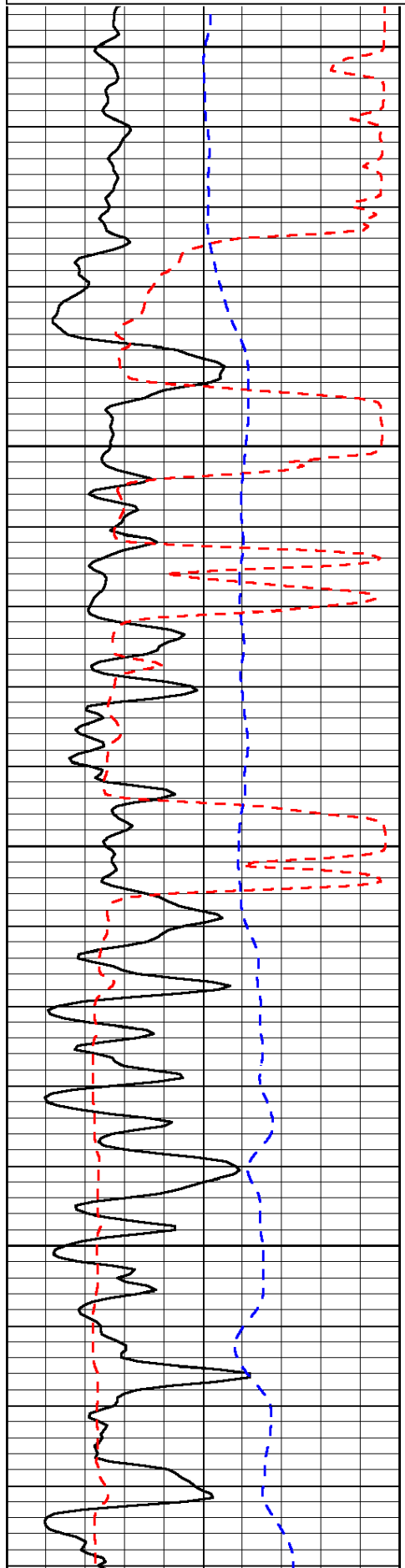
Thank you for using Log-Tech, Inc.  
 (785) 625-3858

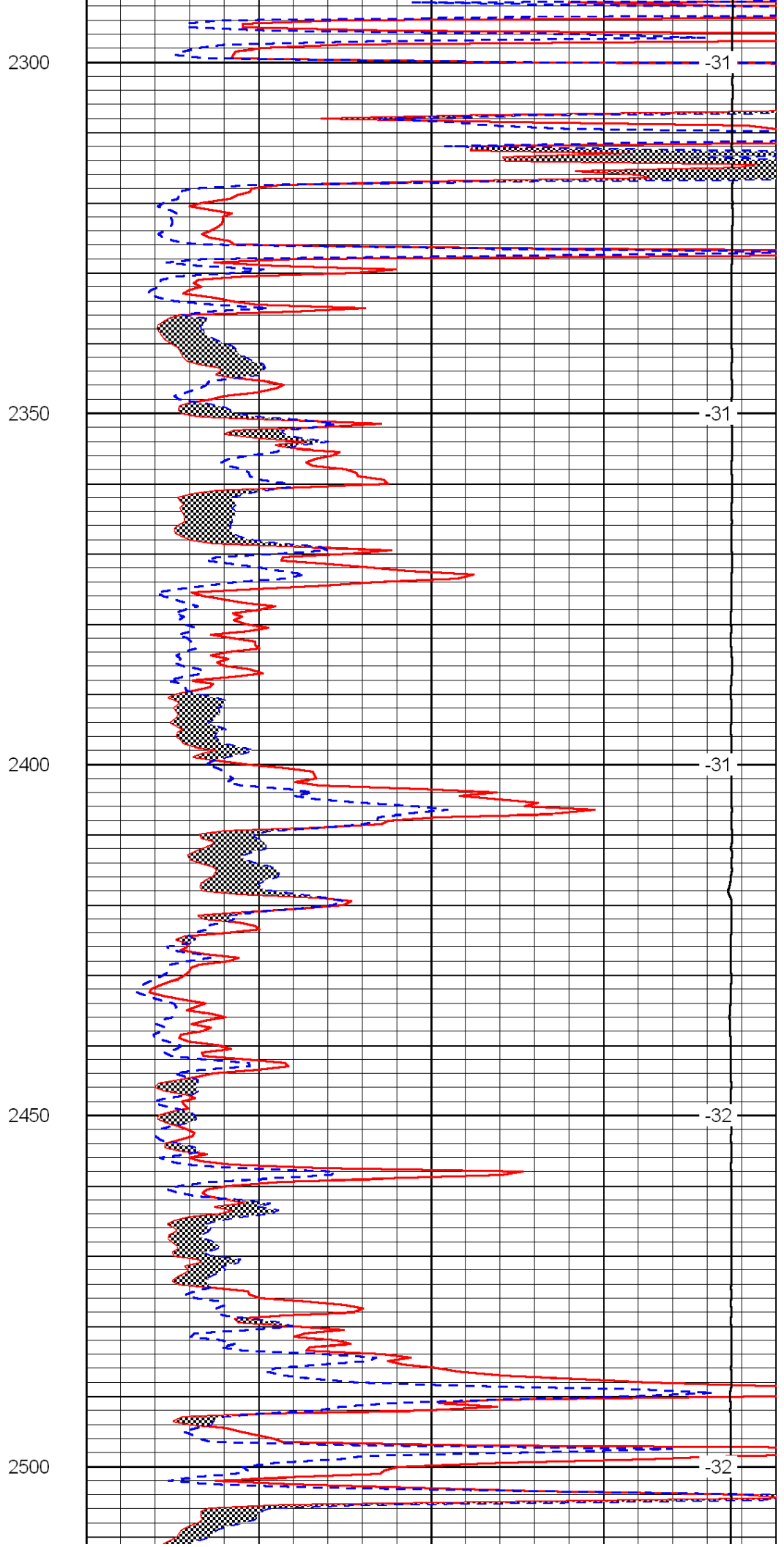
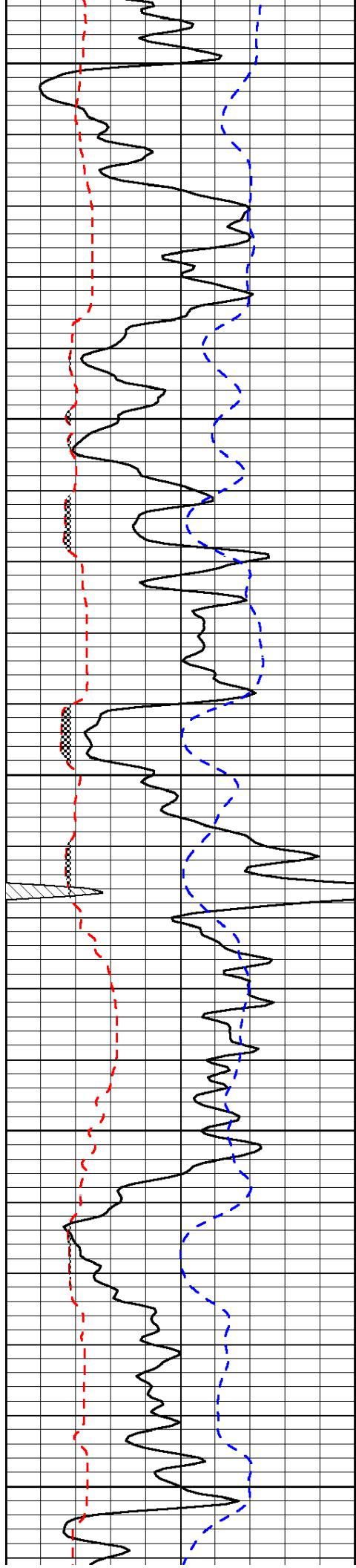
Alexander, 11 South to W Rd, 2 West, 1/2 South, East Into

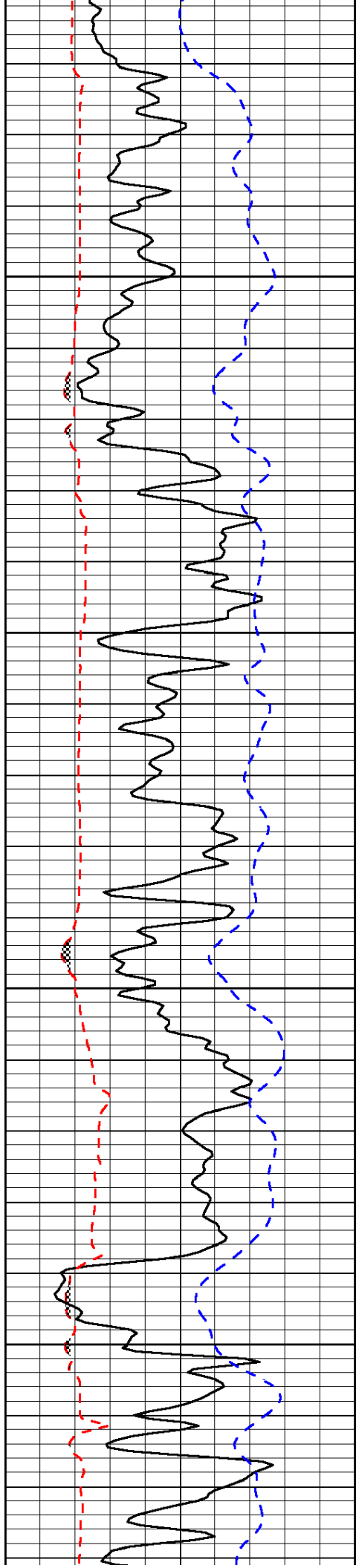
0	Gamma Ray	150
6	Micro Log Caliper (GAPI)	16
-200	SP (mV)	0

0	Micro Inverse 1 X 1	40
0	Micro Normal 2"	40
15000	Line Weight	0

LSPD





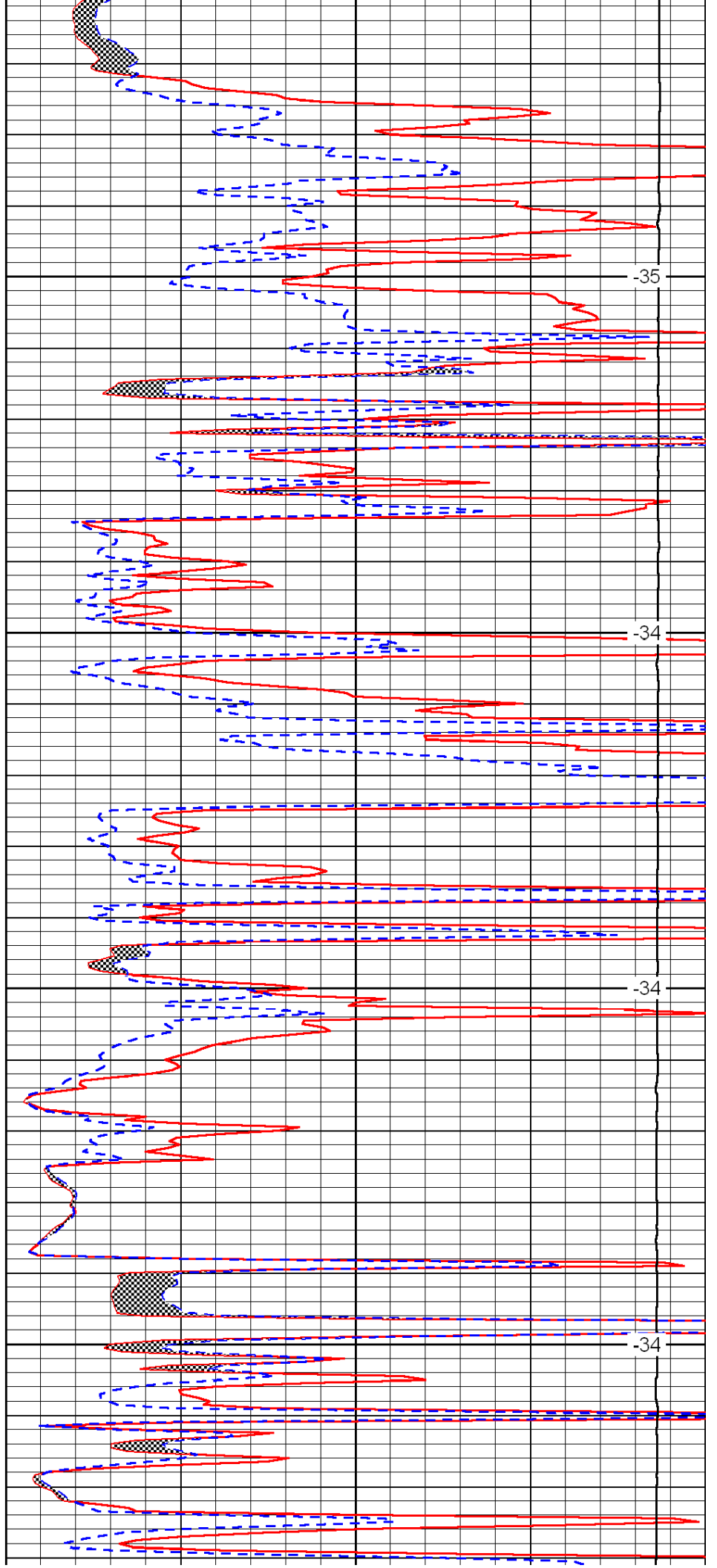


2550

2600

2650

2700

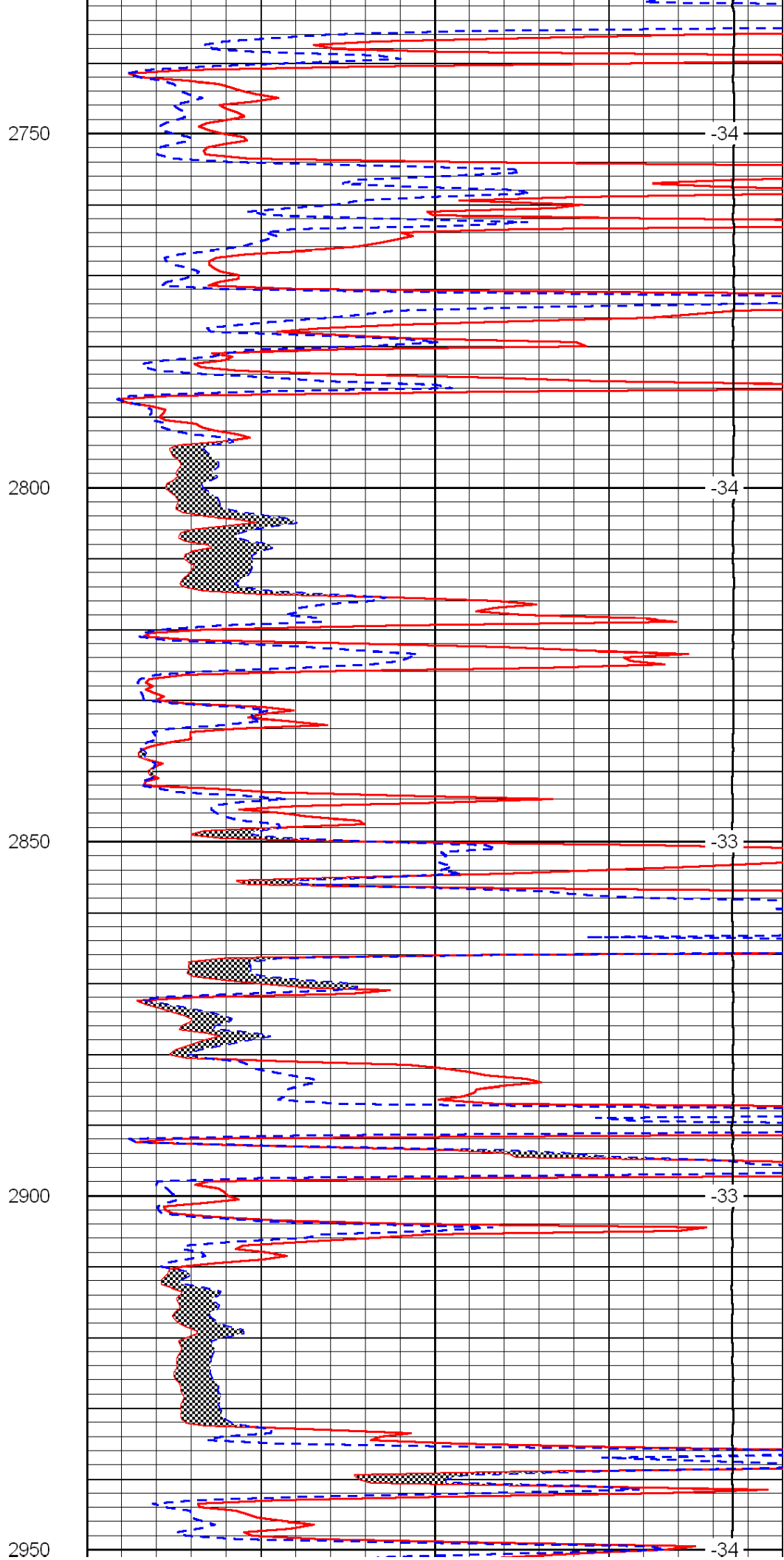
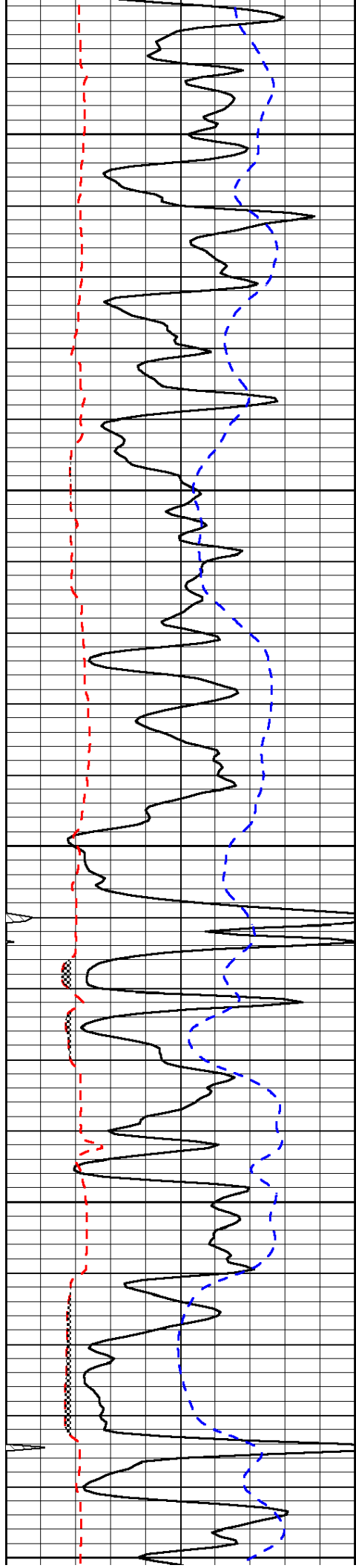


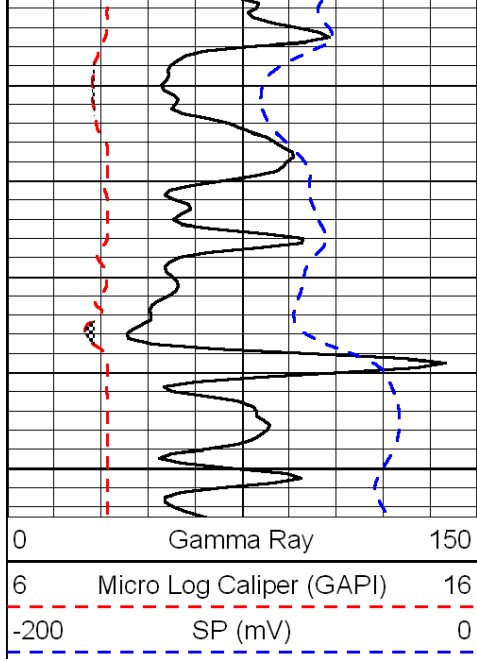
-35

-34

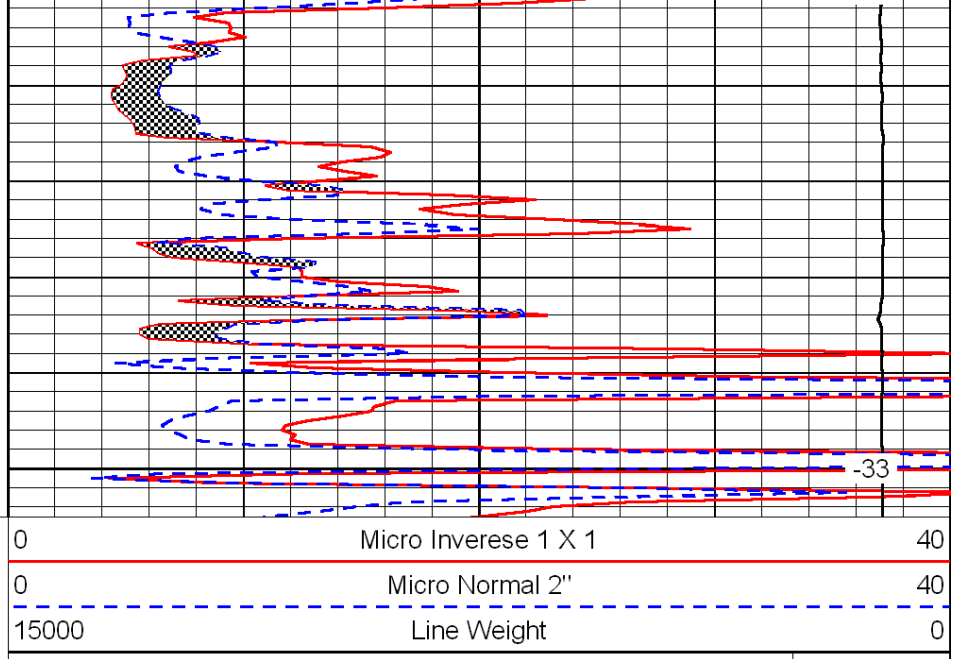
-34

-34





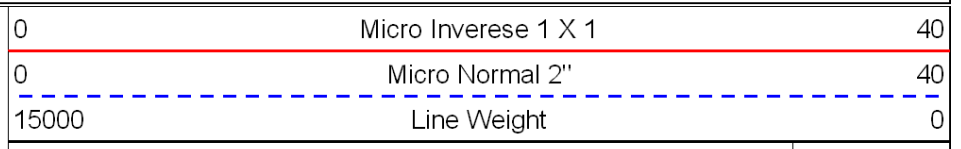
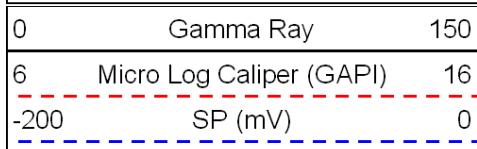
3000



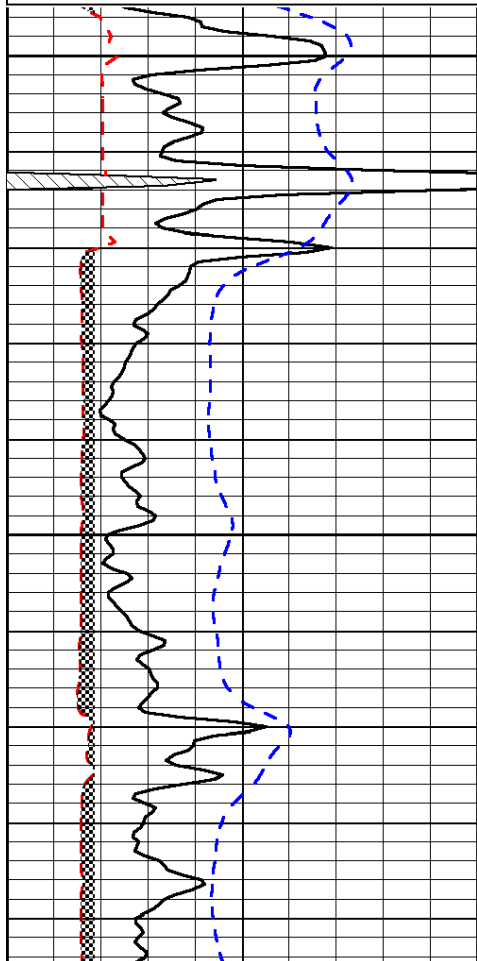
-33

LSPD

Database File: c:\warrior\data\downing-nelson\_ifs unit no. 1-19\downing.db  
 Dataset Pathname: dil/downstck  
 Presentation Format: micro  
 Dataset Creation: Fri Feb 25 17:15:14 2011  
 Charted by: Depth in Feet scaled 1:240

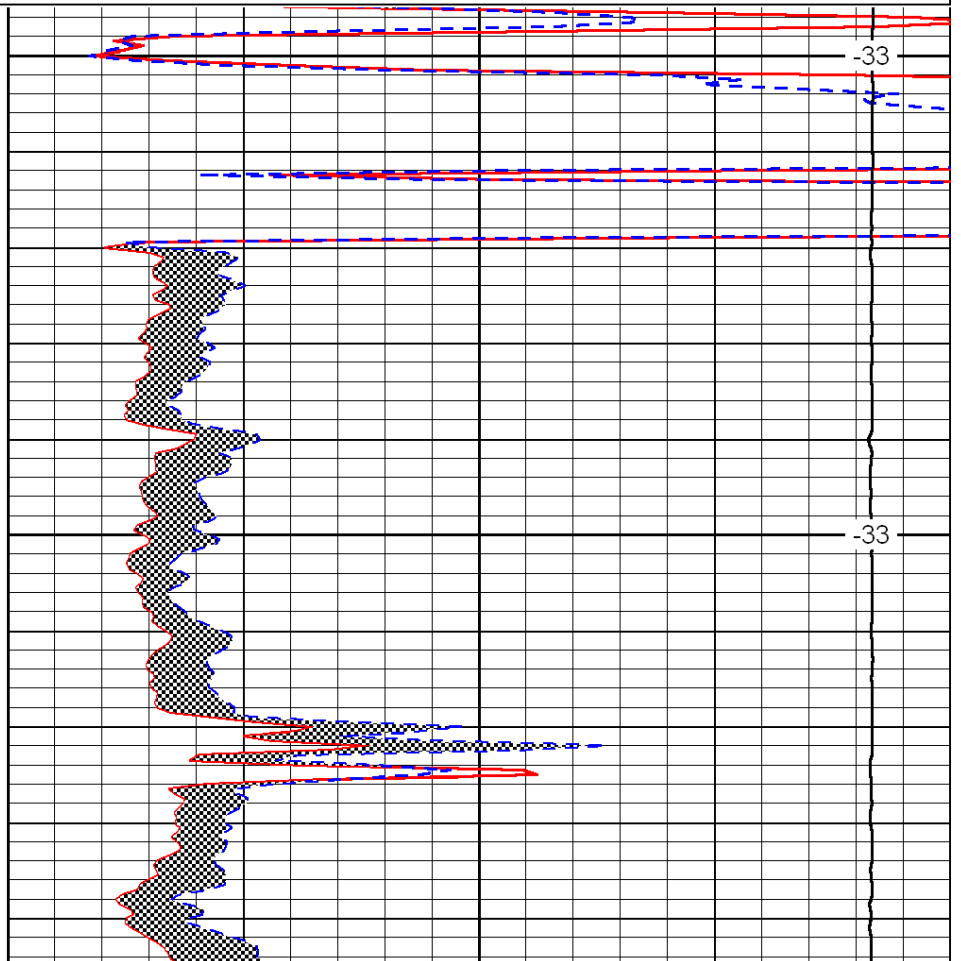


LSPD



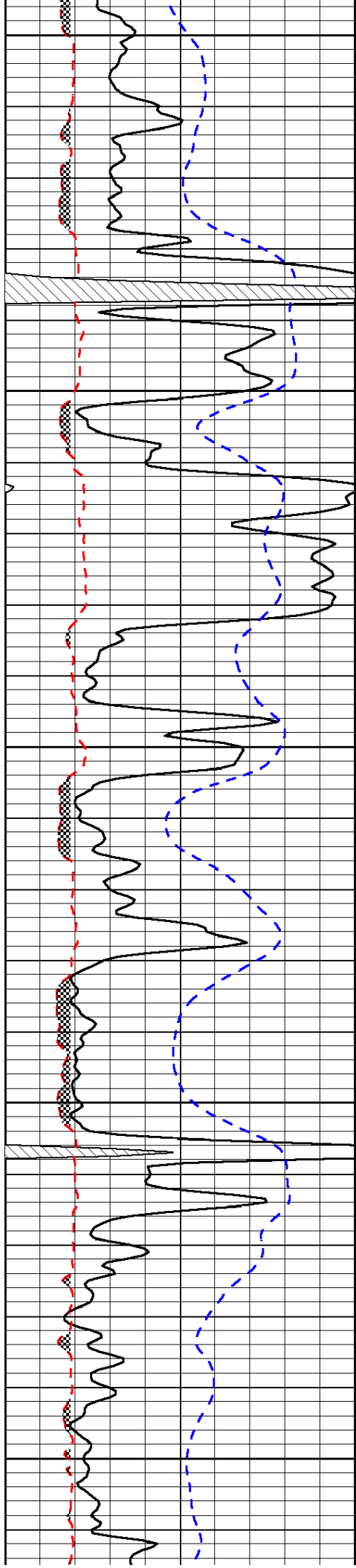
3600

3650



-33

-33



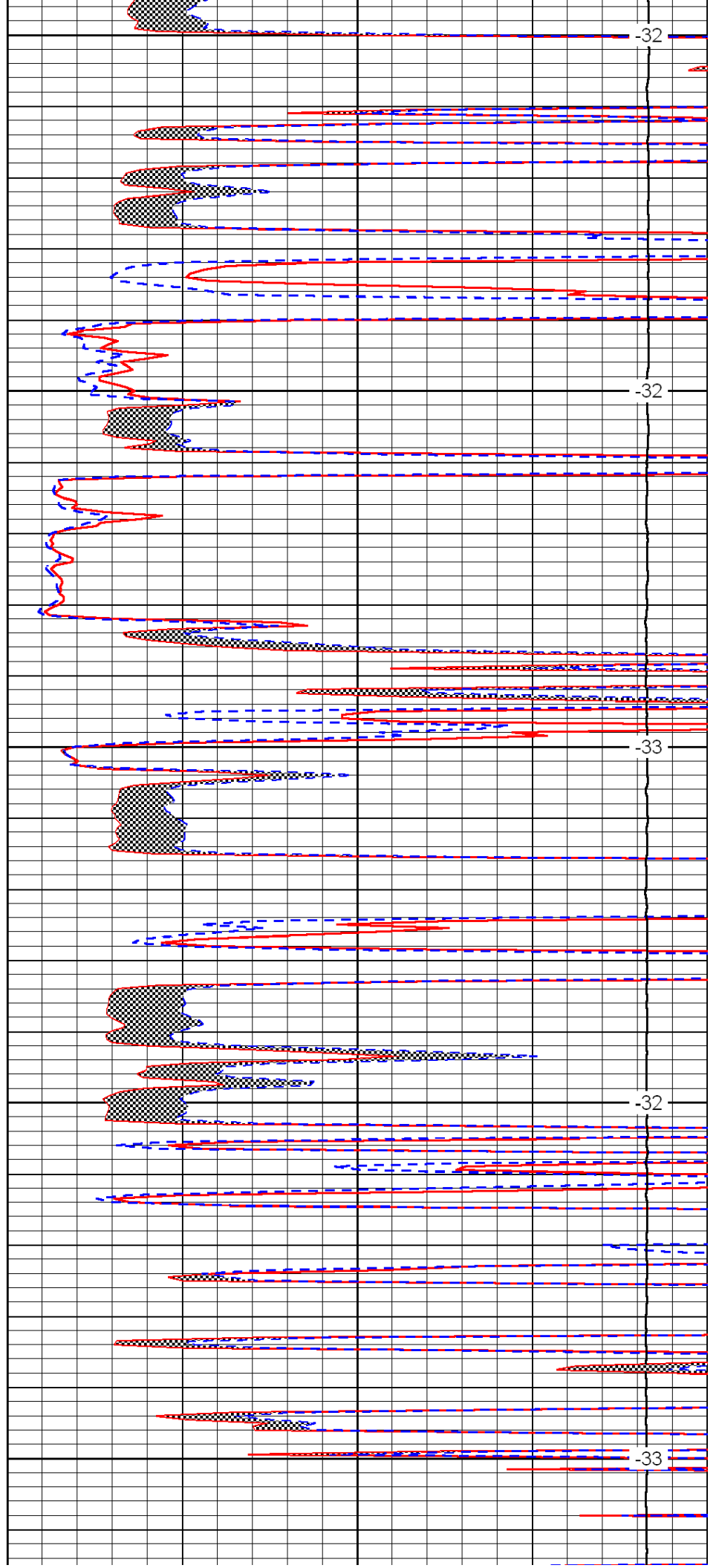
3700

3750

3800

3850

3900



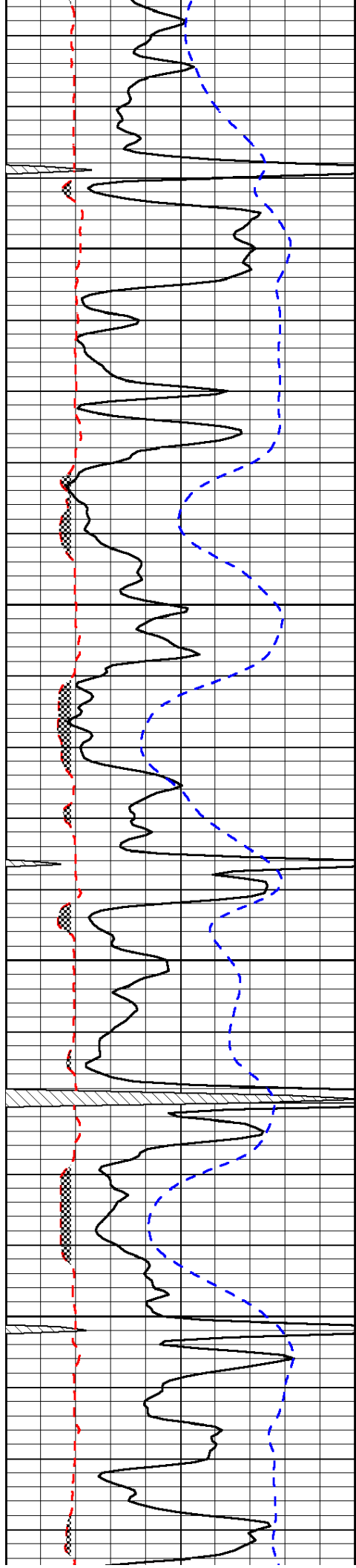
-32

-32

-33

-32

-33

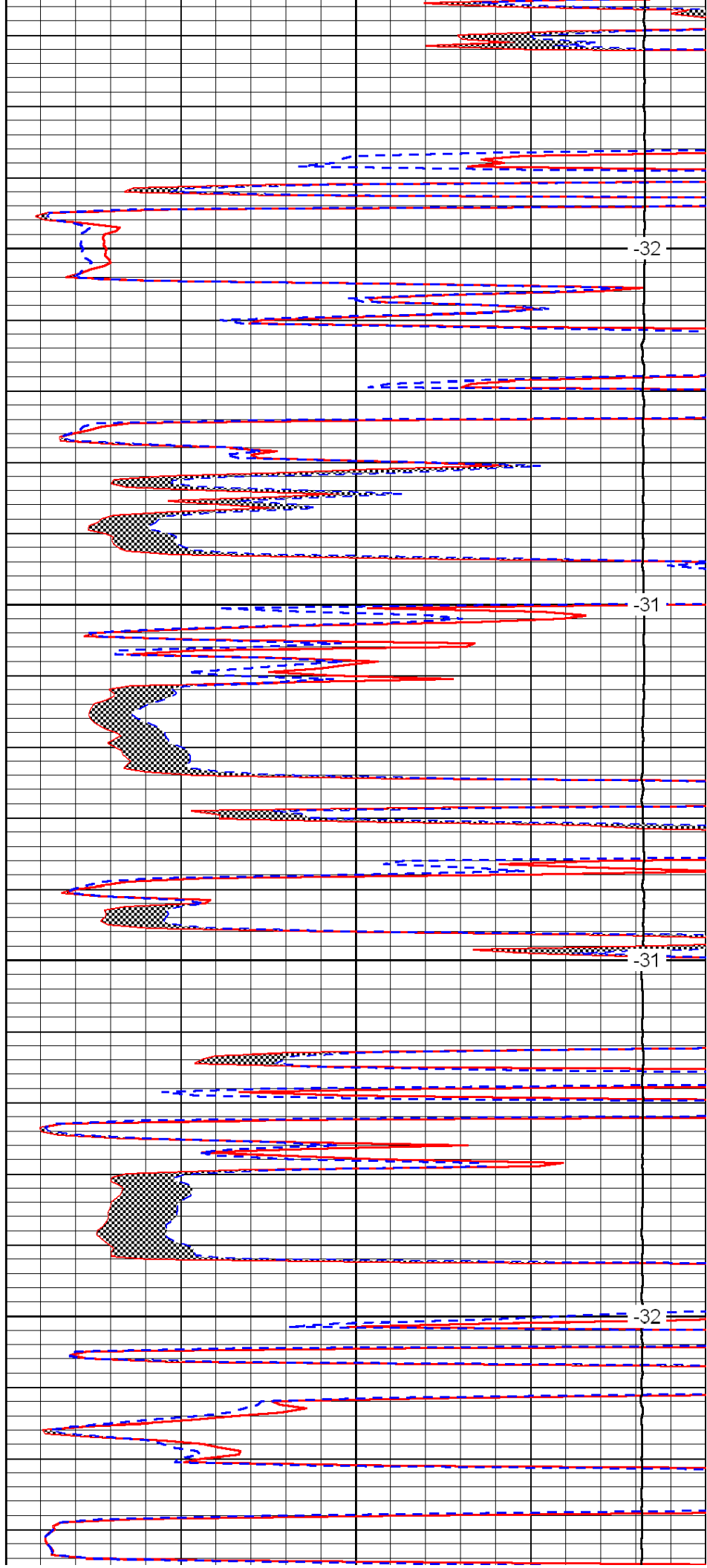


3950

4000

4050

4100

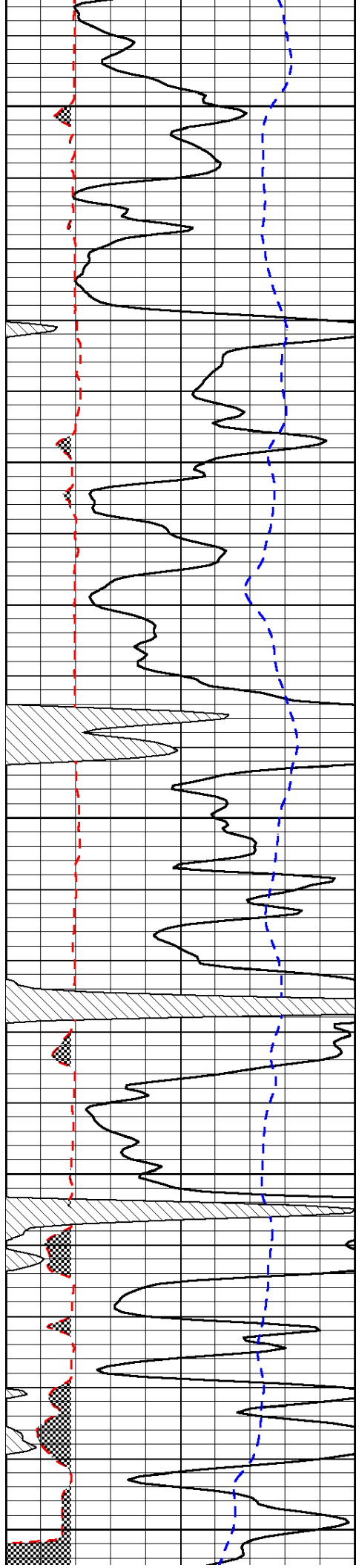


-32

-31

-31

-32



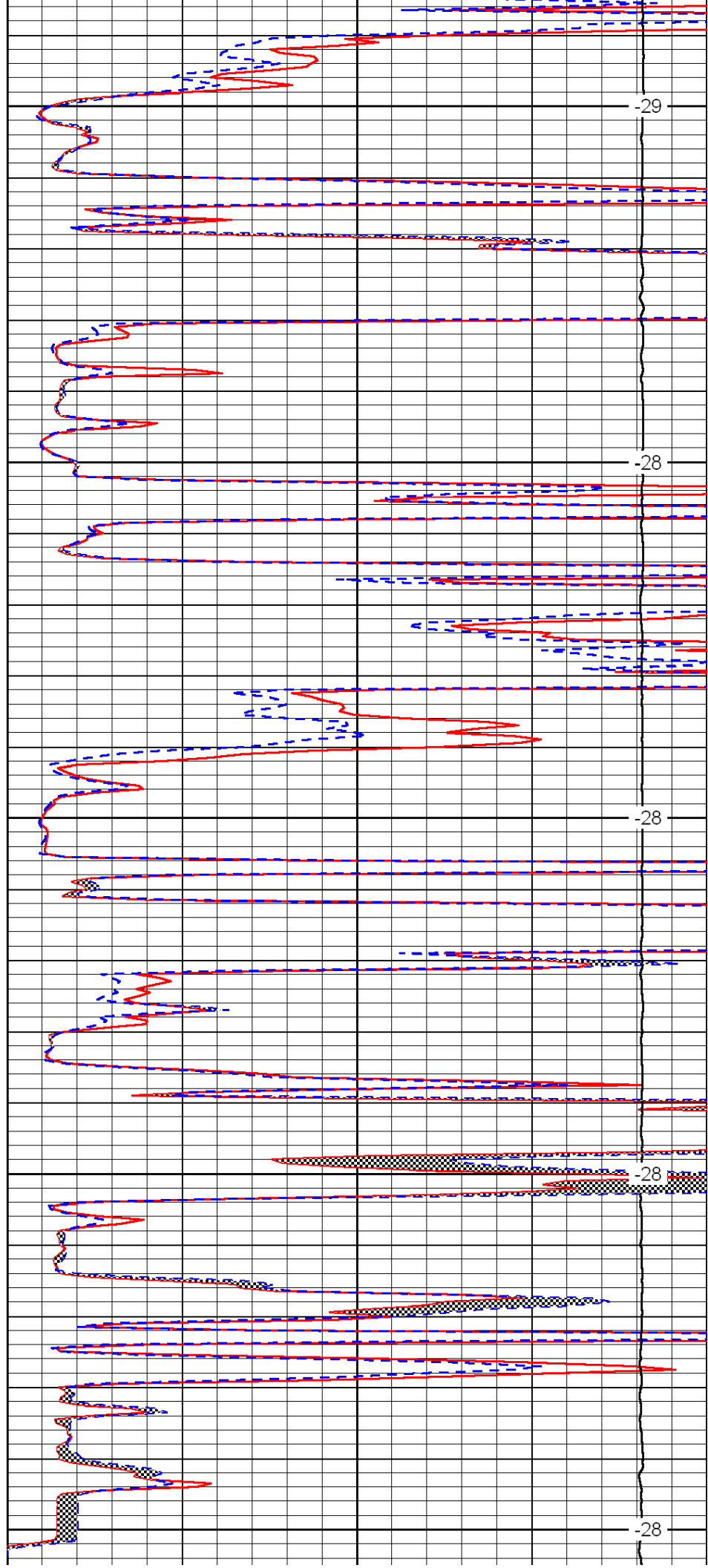
4150

4200

4250

4300

4350



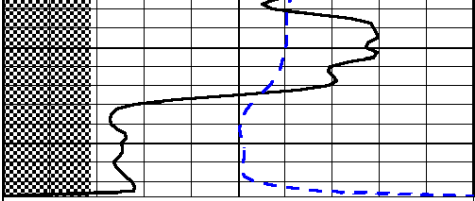
-29

-28

-28

-28

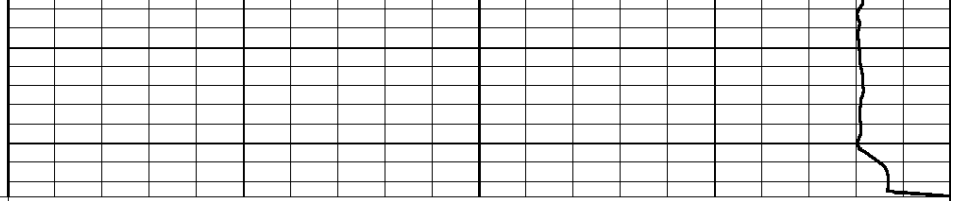
-28



0	Gamma Ray	150
---	-----------	-----

6	Micro Log Caliper (GAPI)	16
---	--------------------------	----

-200	SP (mV)	0
------	---------	---



0	Micro Inverse 1 X 1	40
---	---------------------	----

0	Micro Normal 2''	40
---	------------------	----

15000	Line Weight	0
-------	-------------	---

		LSPD
--	--	------