



Dual Compensated
Porosity Log

DIGITAL LOG (785) 625-3858

API No. 15-145-21,632-00-00

Company **Downing-Nelson Oil Company, Inc.**
 Well **IFS Unit No. 1-19**
 Field **Steffen Northwest**
 County **Pawnee** State **Kansas**

Location **W2 W2 W2 W2
2,648' FNL & 120' FWL**

Other Services
DIL
MEI/BHCS

Permanent Datum **Ground Level** Elevation **2215**
 Log Measured From **Kelly Bushing** 8 Ft. Above Perm. Datum
 Drilling Measured From **Kelly Bushing**

Sec: **19** Twp: **20S** Rge: **20W**

Elevation
K.B. 2223
D.F. 2215
G.L. 2215

Date **2/25/2011**

Run Number **One**

Type Log **CNL / CDL**

Depth Driller **4368**

Depth Logger **4370**

Bottom Logged Interval **4349**

Top Logged Interval **2100**

Type Fluid In Hole **Chemical**

Salinity, PPM CL **5000**

Density **9.2**

Level **Full**

Max. Rec. Temp. F **120**

Operating Rig Time **4 1/2 Hours**

Equipment -- Location **10 Hays**

Recorded By **J. Long**

Witnessed By **Marc Downing**

Borehole Record				Casing Record			
Run No.	Bit	From	To	Size	Wgt.	From	To
1	12.25	00	522	8.625	24#	00	522
2	7.875	522	4368				

<<< Fold Here >>>

All interpretations are opinions based on inferences from electrical or other measurements and we cannot and do not guarantee the accuracy or correctness of any interpretation, and we shall not, except in the case of gross or willful negligence on our part, be liable or responsible for any loss, costs, damages, or expenses incurred or sustained by anyone resulting from any interpretation made by any of our officers, agents or employees. These interpretations are also subject to our general terms and conditions set out in our current Price Schedule.

Comments

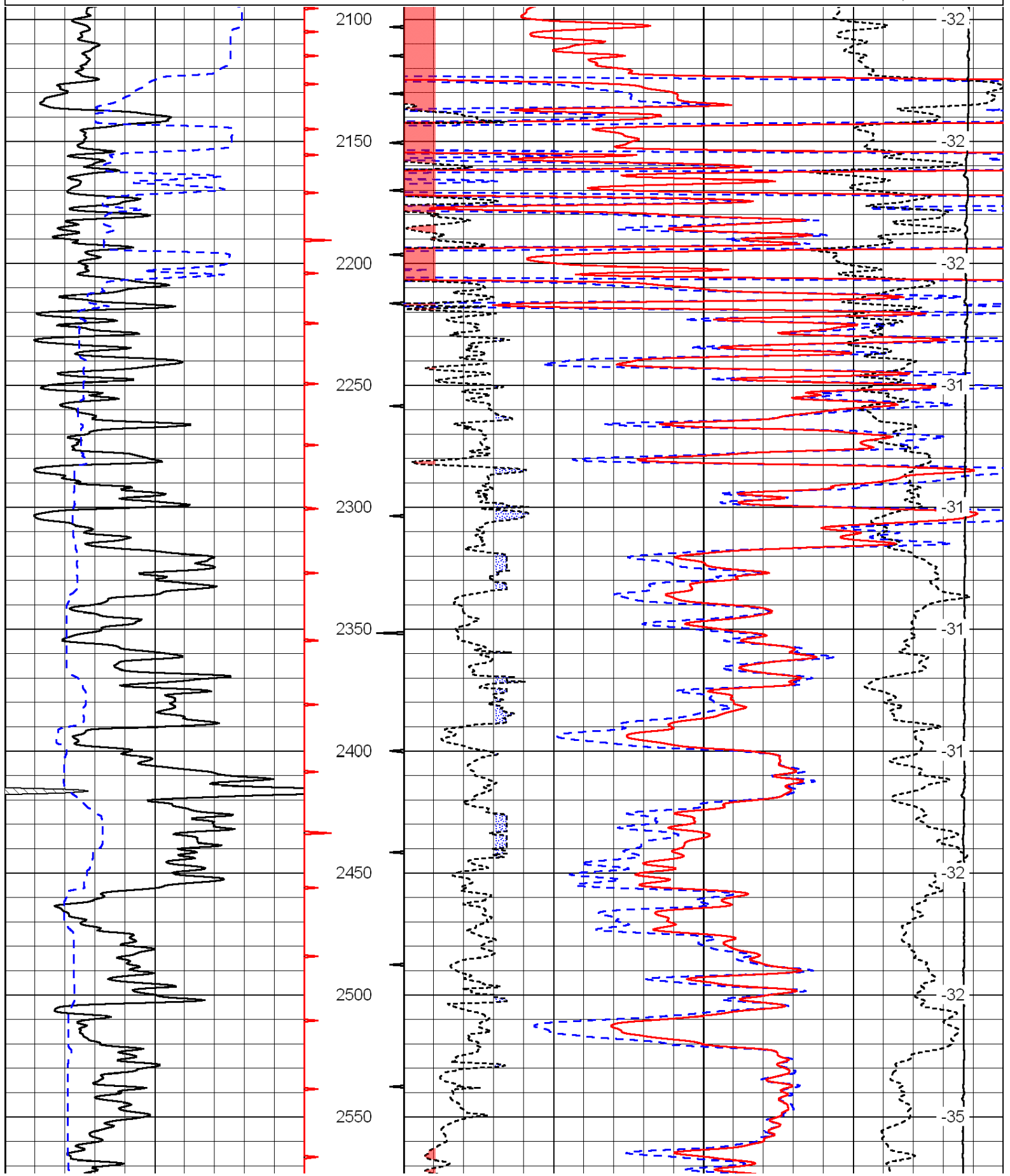
Thank you for using Log-Tech, Inc.
 (785) 625-3858

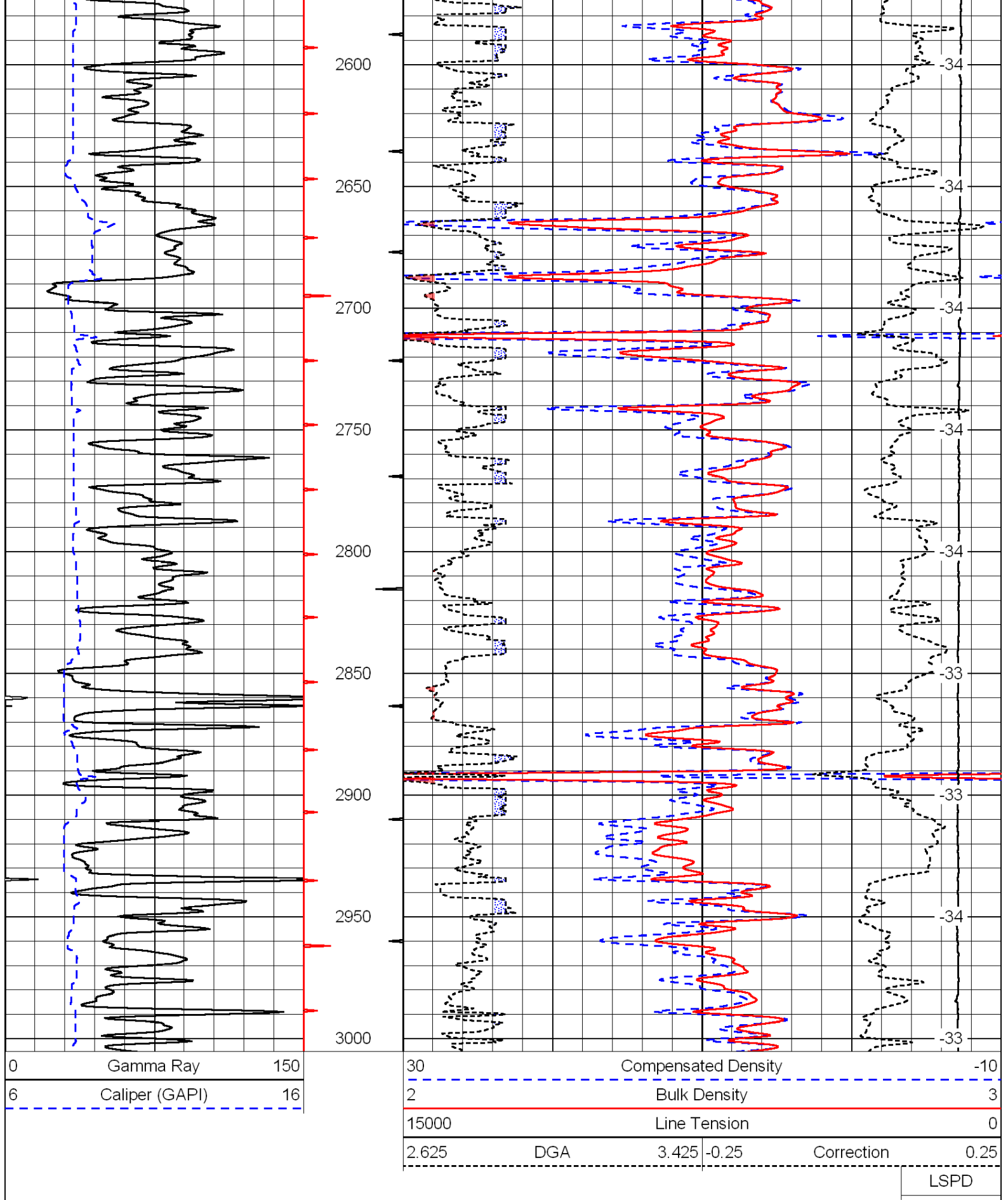
Alexander, 11 South to W Rd, 2 West, 1/2 South, East Into

Database File: c:\warrior\data\downing-nelson_ifs unit no. 1-19\downing.db
 Dataset Pathname: dil/downstck
 Presentation Format: cdl
 Dataset Creation: Fri Feb 25 17:15:14 2011
 Charted by: Depth in Feet scaled 1:600

0	Gamma Ray	150
6	Caliper (GAPI)	16

30	Compensated Density		-10
2	Bulk Density		3
15000	Line Tension		0
2.625	DGA	3.425	-0.25
Correction			0.25
LSPD			

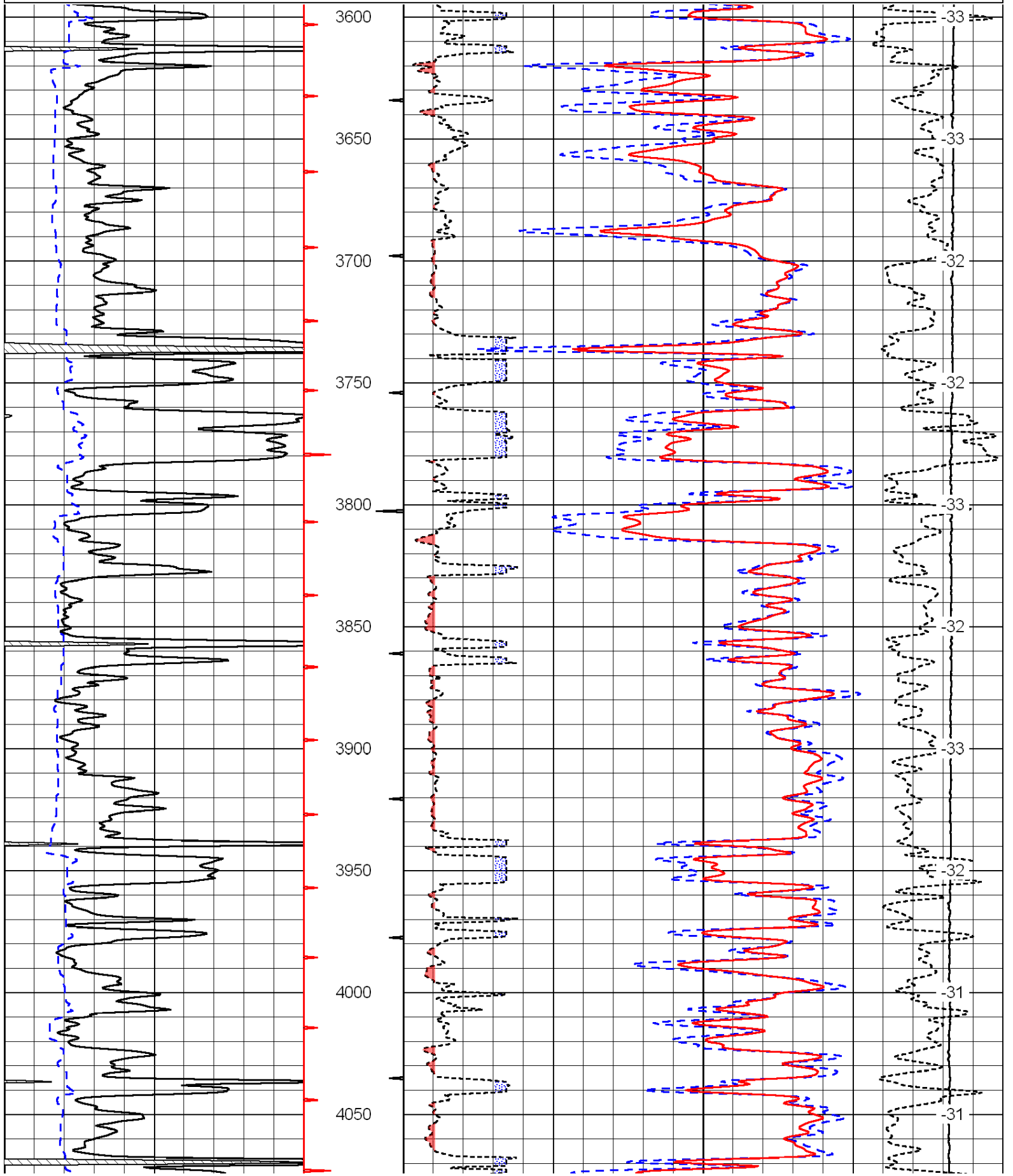


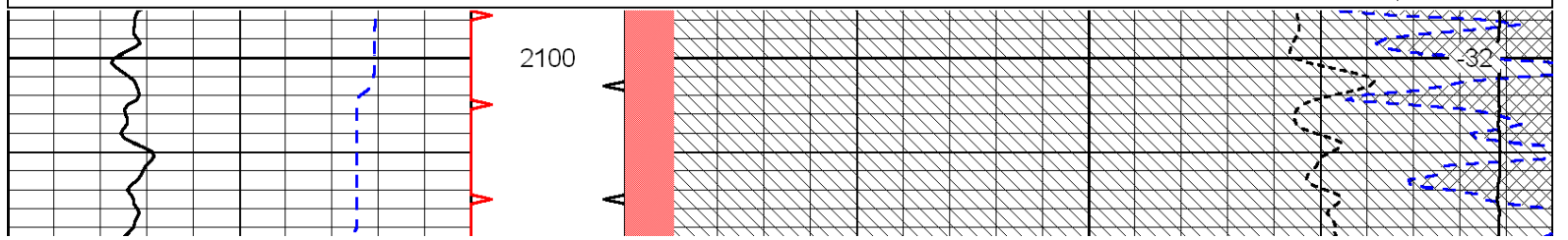
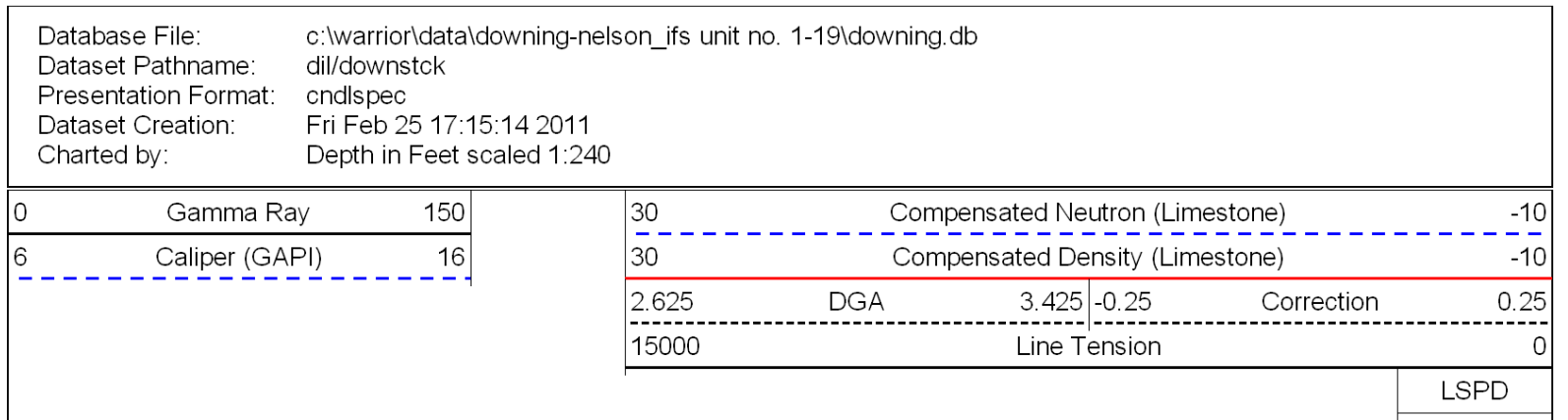
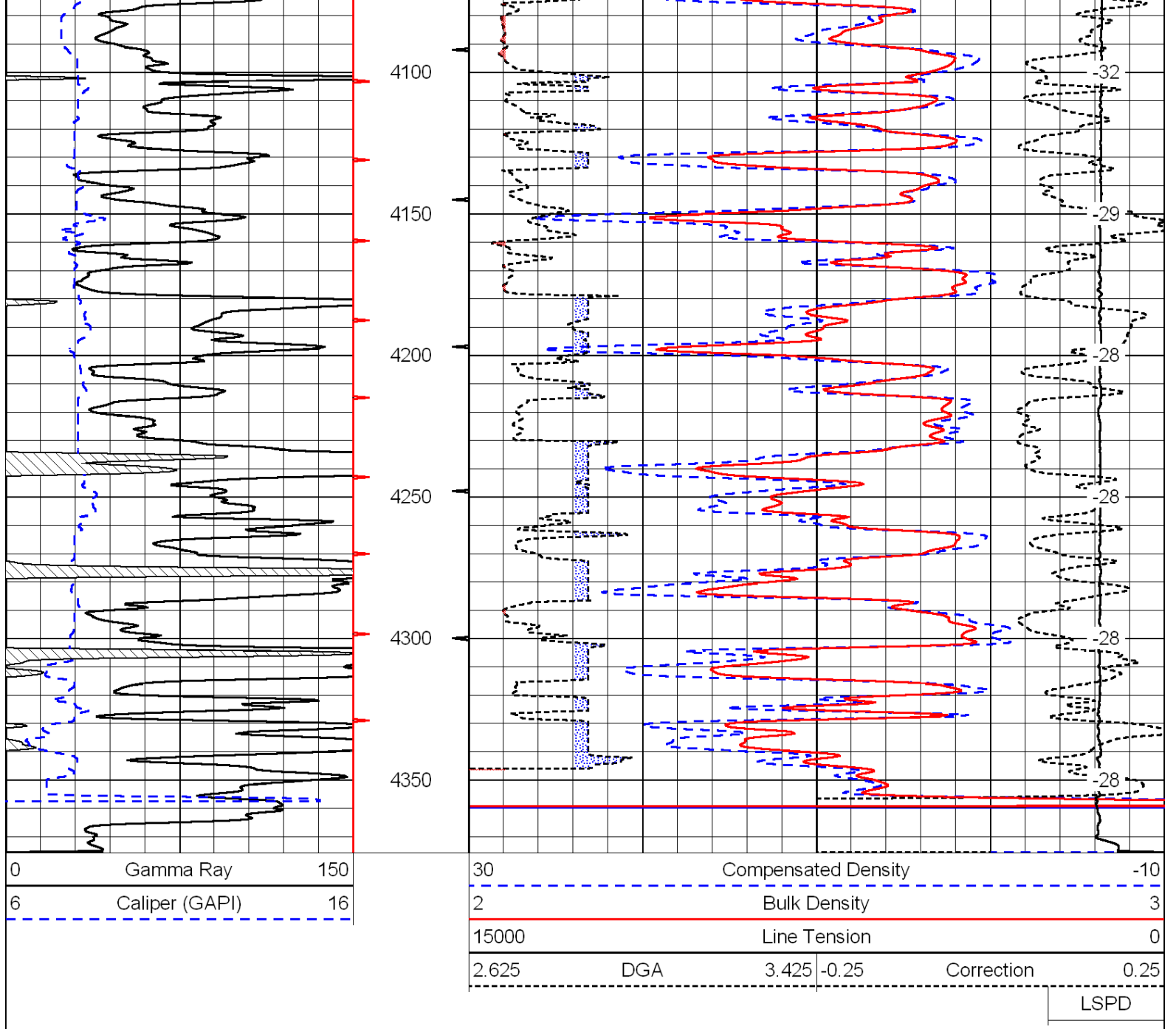


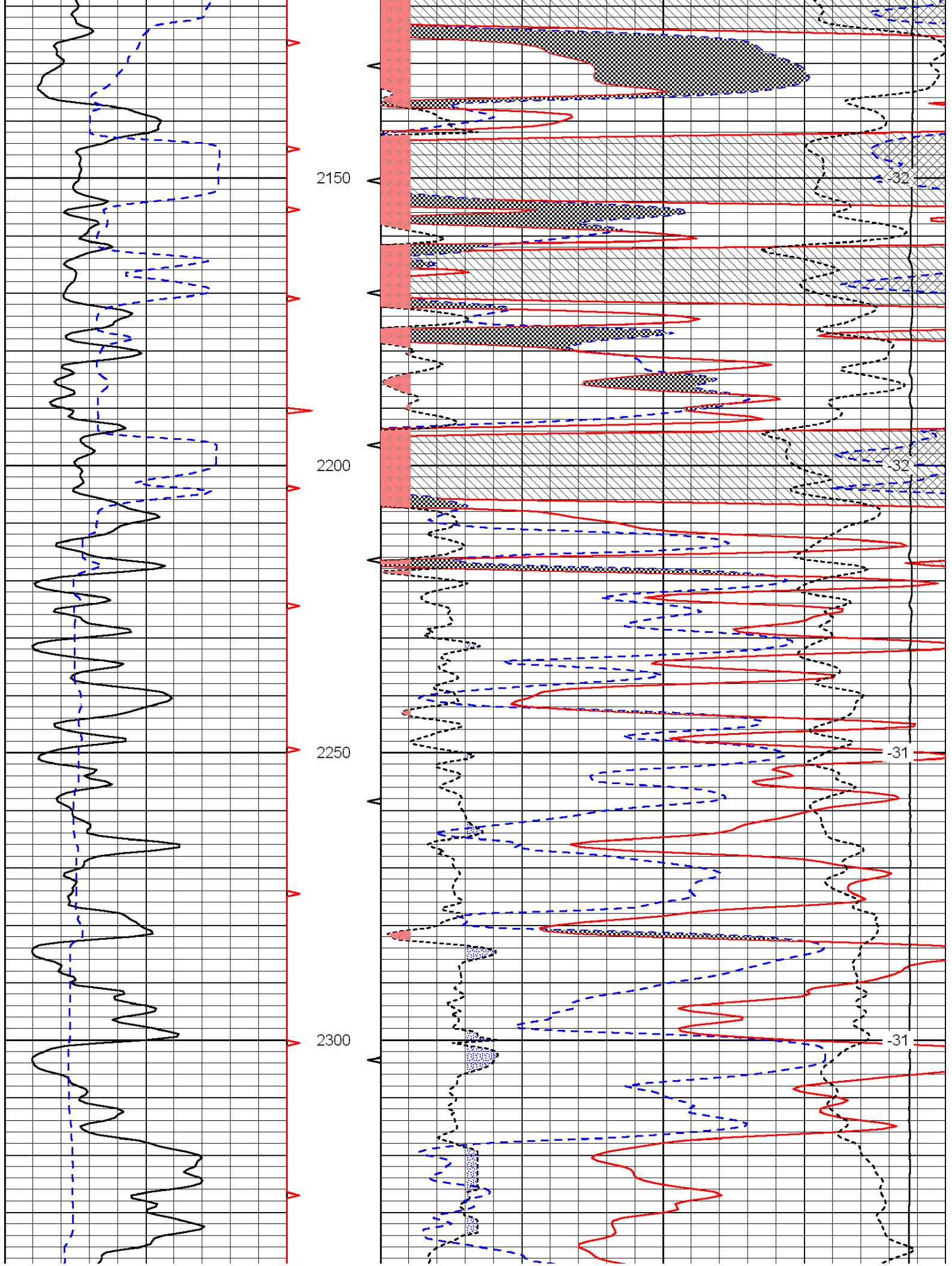
Database File: c:\warrior\data\downing-nelson_ifs unit no. 1-19\downing.db
 Dataset Pathname: dil/downstck
 Presentation Format: cdl
 Dataset Creation: Fri Feb 25 17:15:14 2011
 Charted by: Depth in Feet scaled 1:600

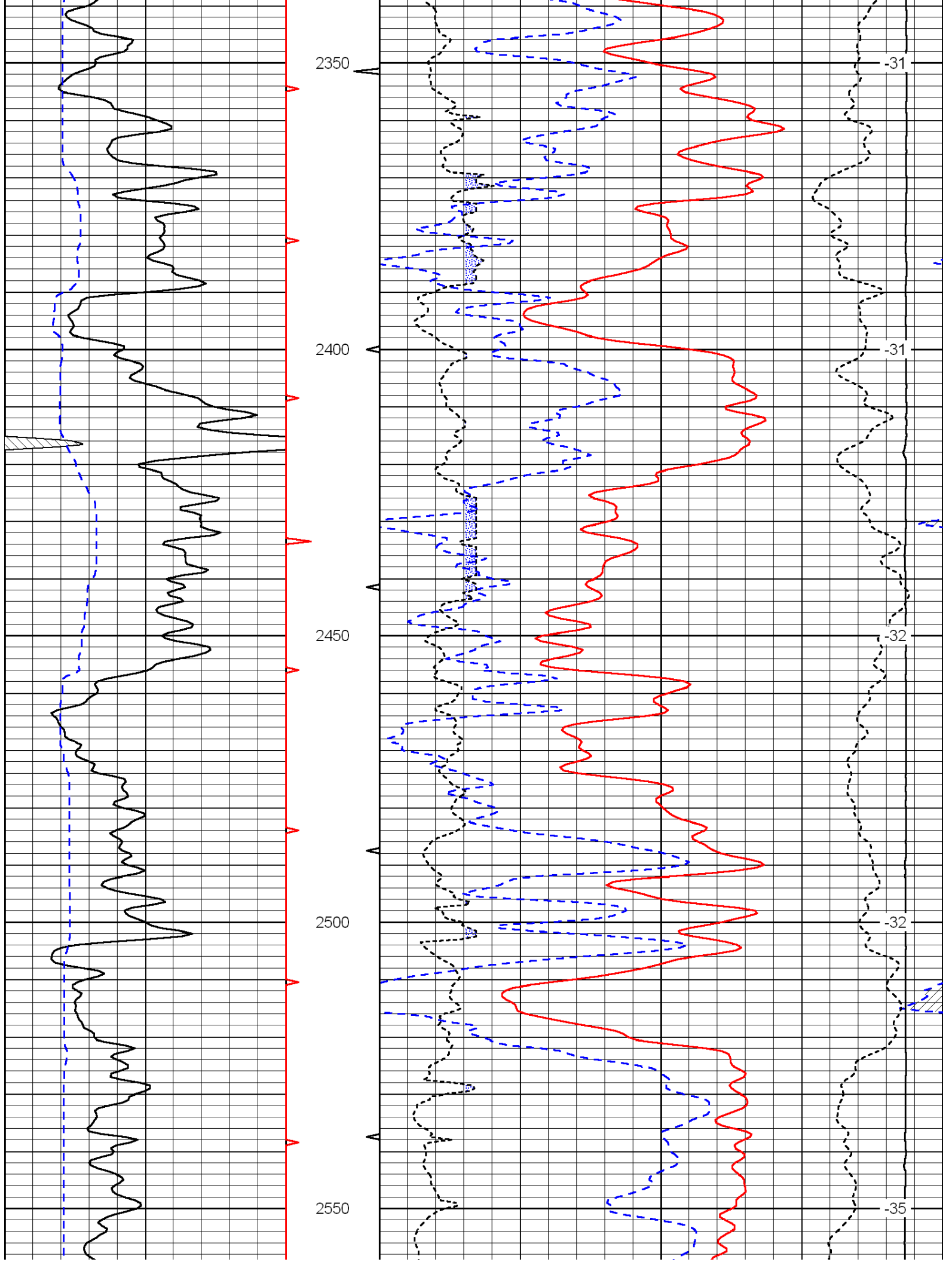
0	Gamma Ray	150
6	Caliper (GAPI)	16

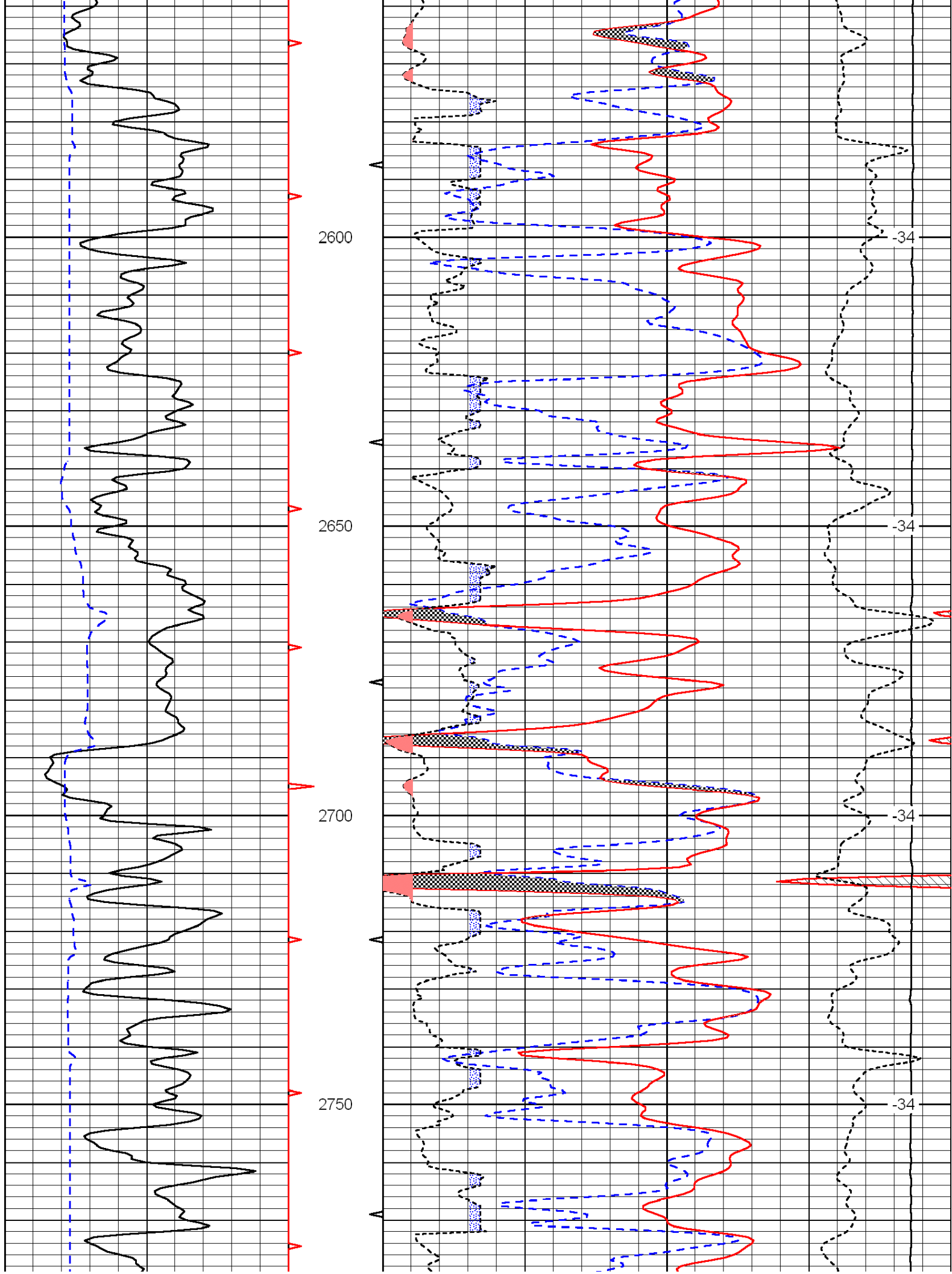
30	Compensated Density		-10
2	Bulk Density		3
15000	Line Tension		0
2.625	DGA	3.425	-0.25
Correction			0.25
LSPD			

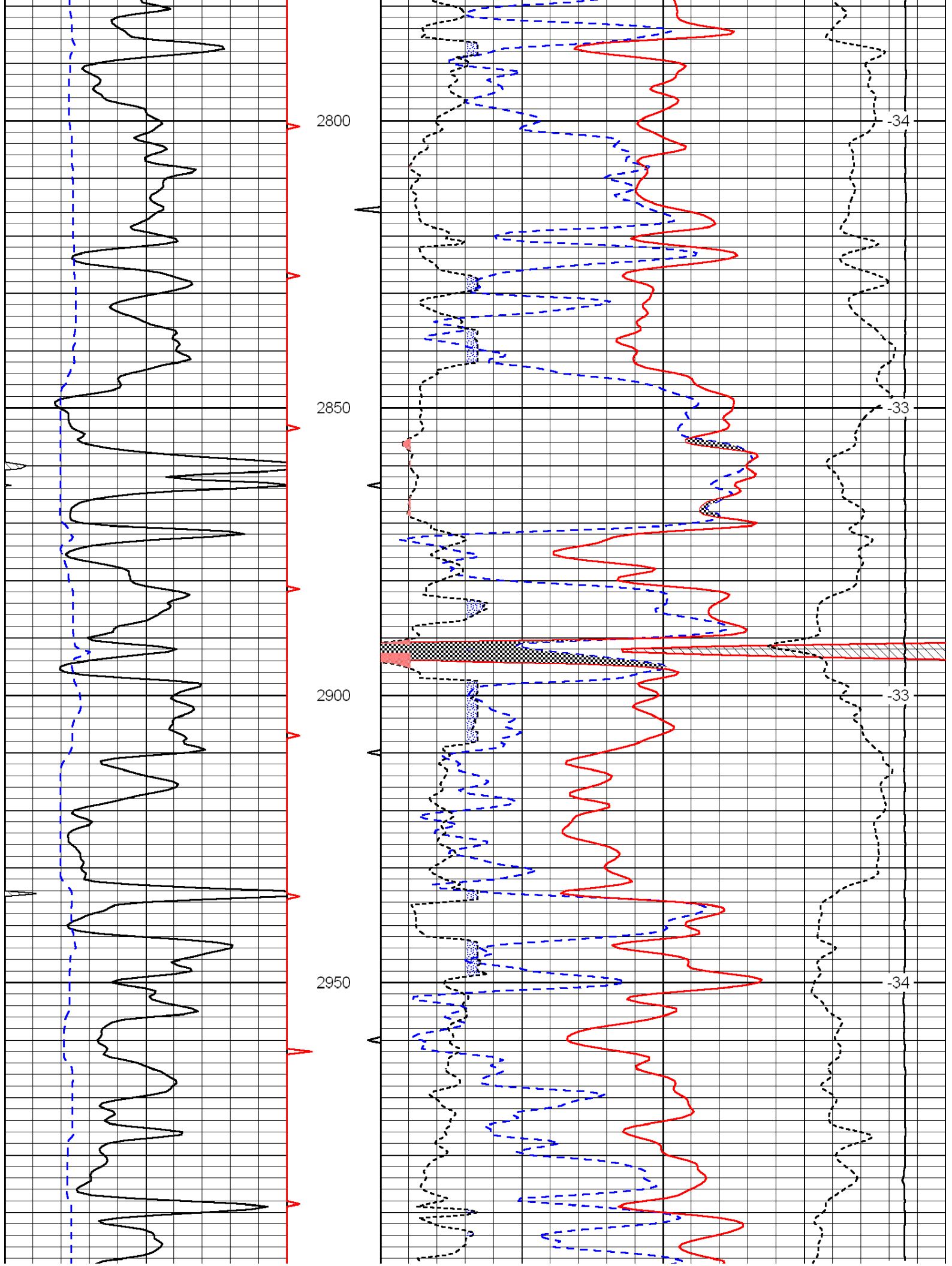


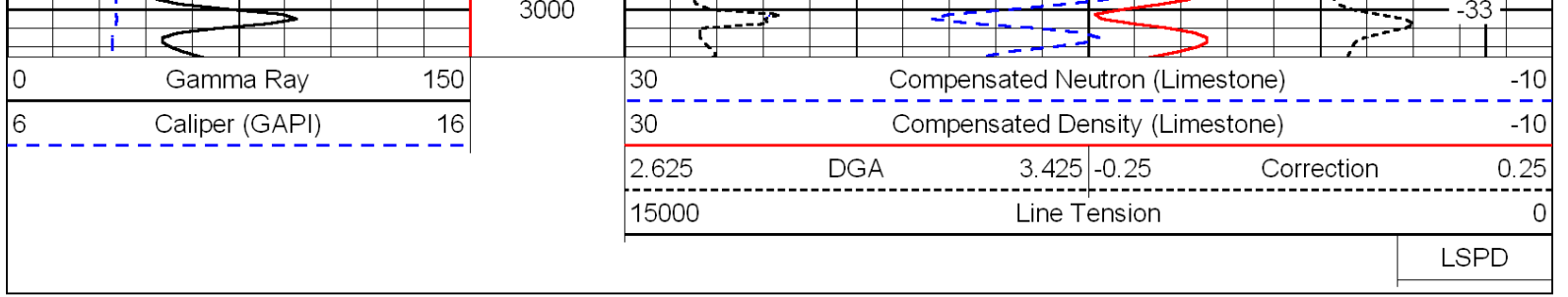




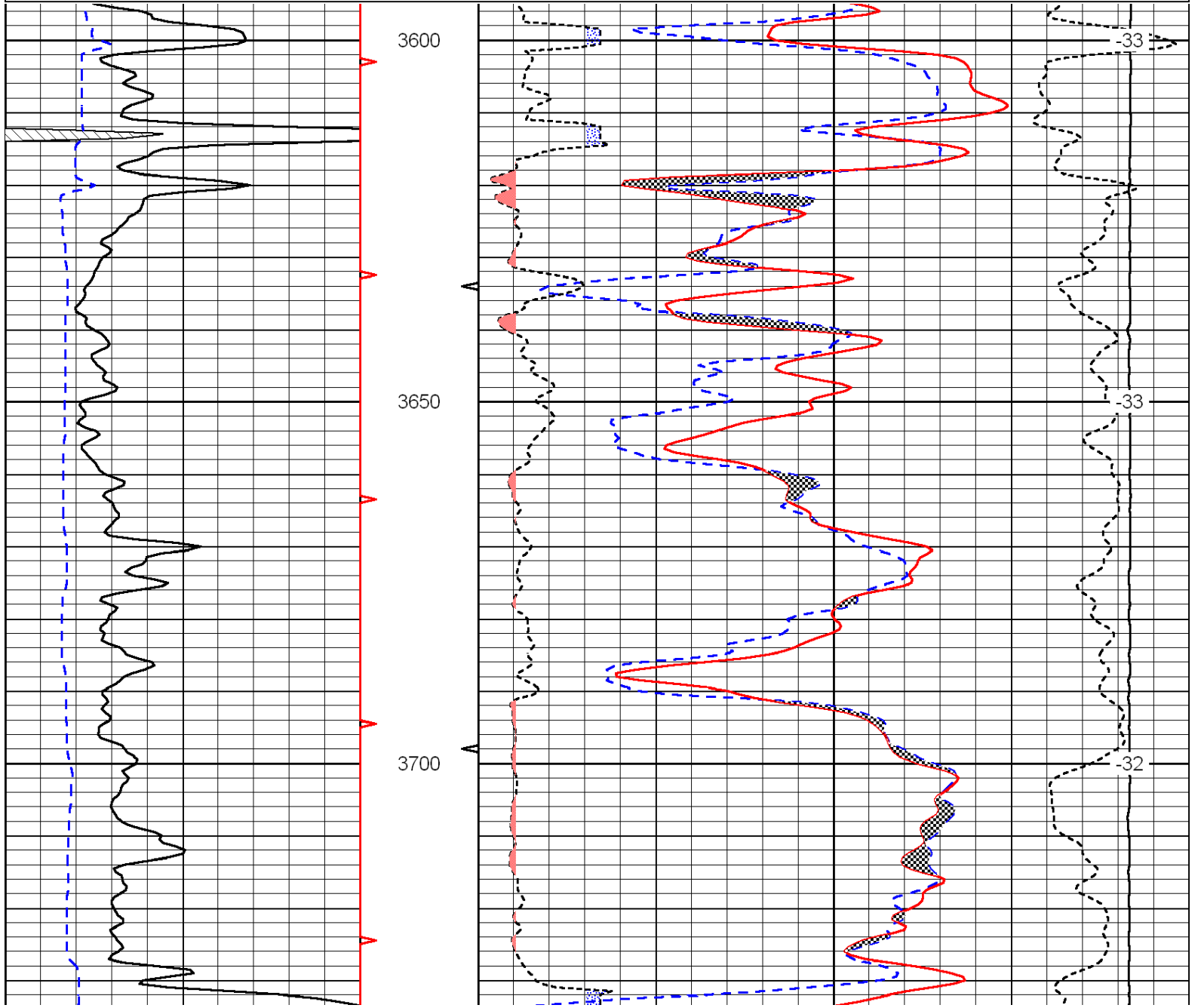
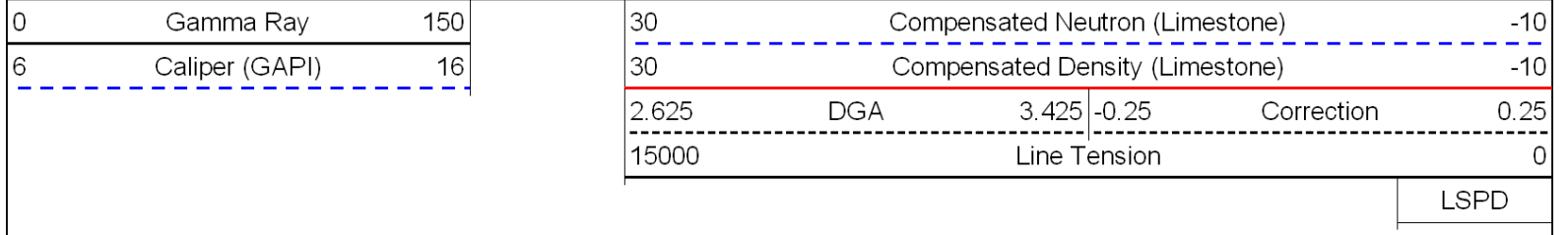


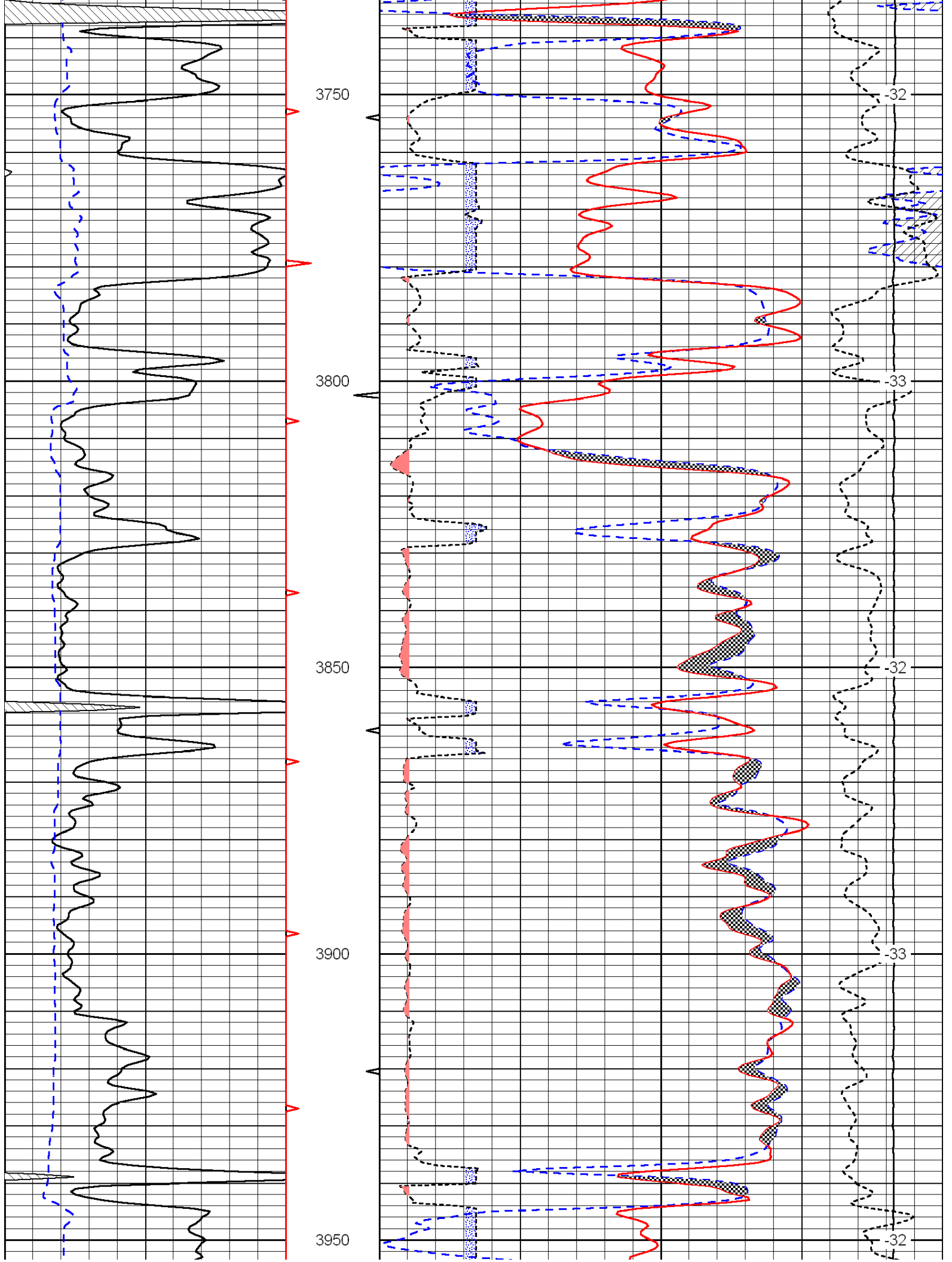


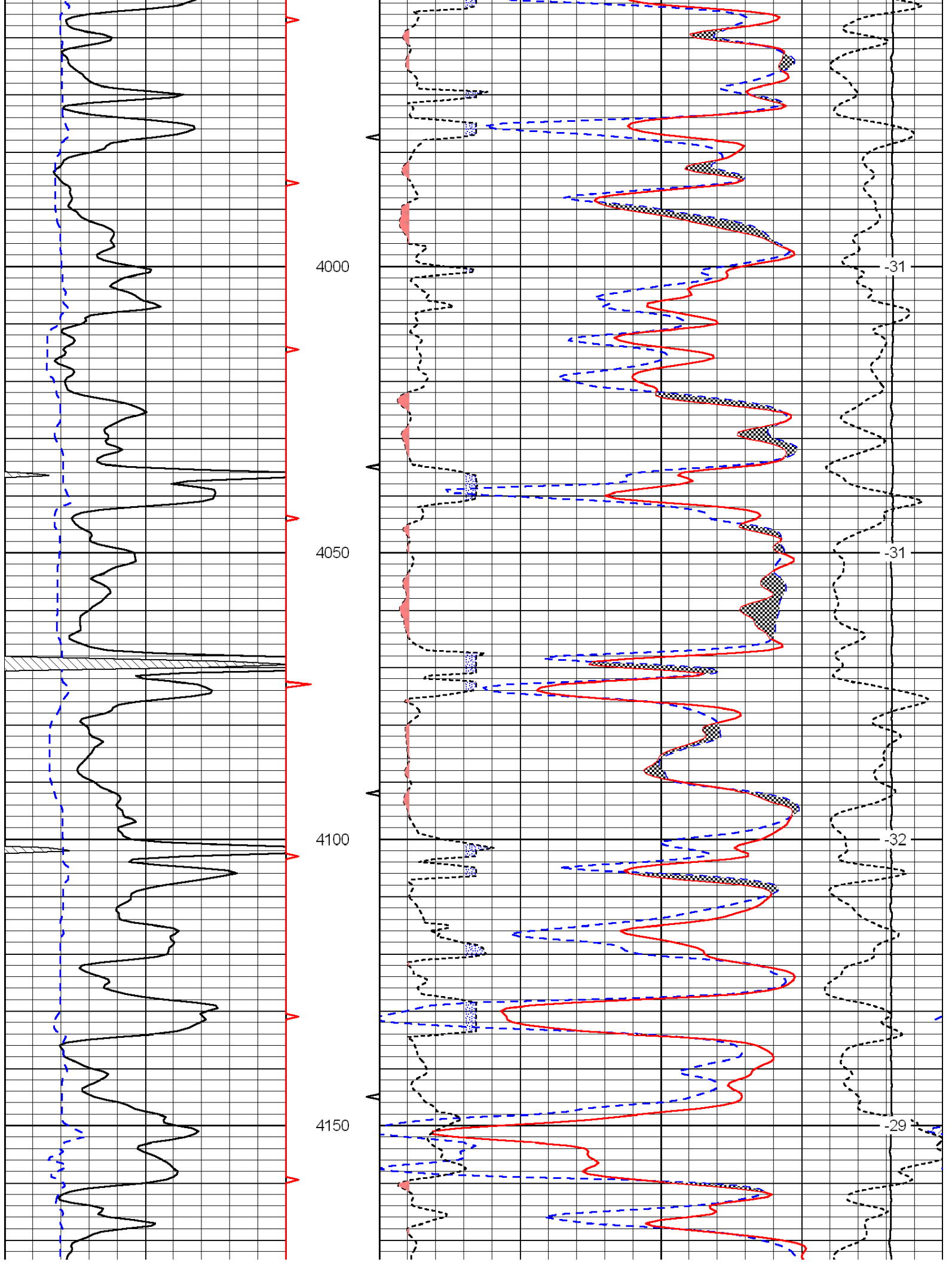


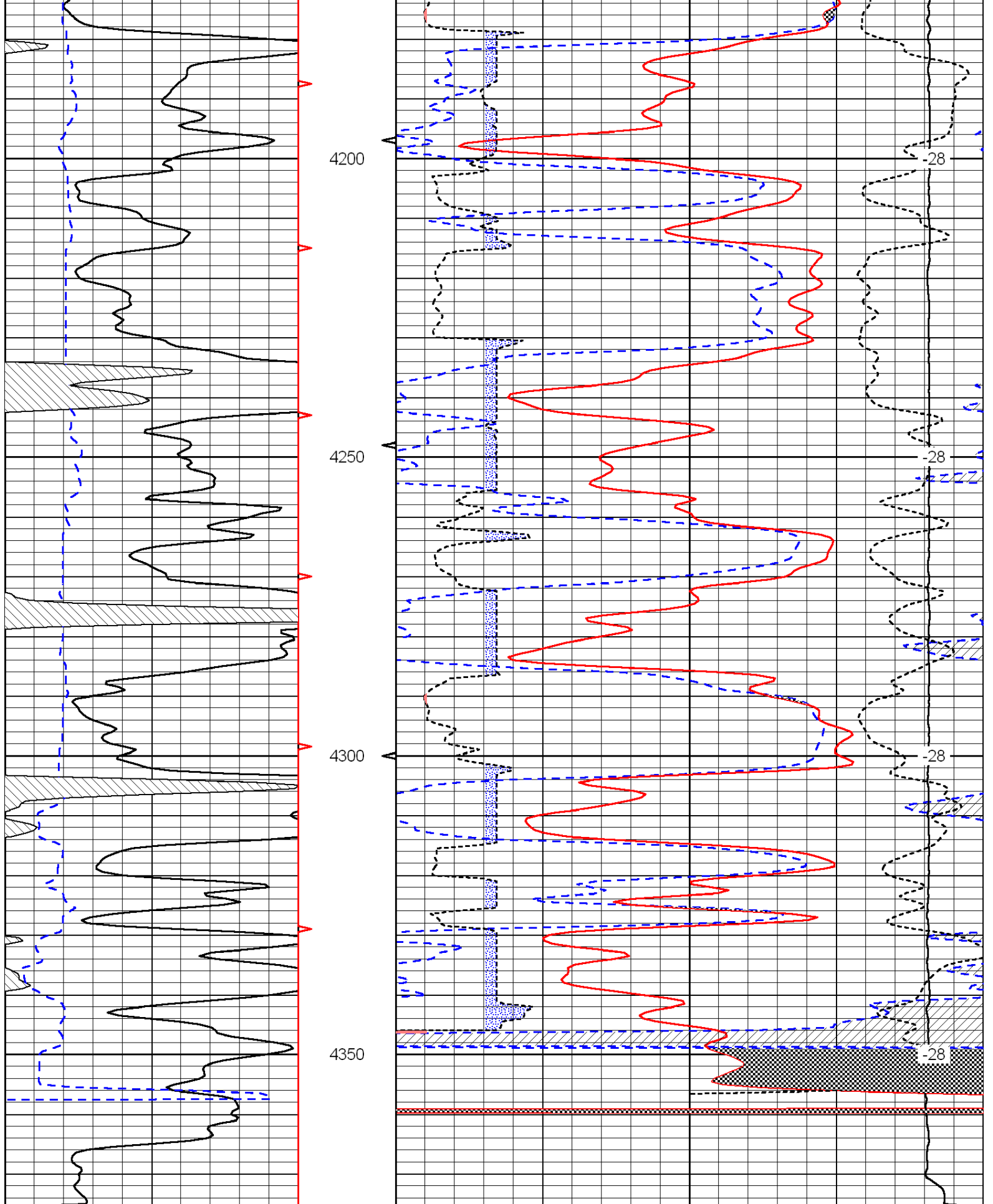


Database File: c:\warrior\data\downing-nelson_ifs unit no. 1-19\downing.db
 Dataset Pathname: dil/downstck
 Presentation Format: cndlspec
 Dataset Creation: Fri Feb 25 17:15:14 2011
 Charted by: Depth in Feet scaled 1:240









0	Gamma Ray	150
6	Caliper (GAPI)	16

30	Compensated Neutron (Limestone)	-10
30	Compensated Density (Limestone)	-10

2.625	DGA	3.425	-0.25	Correction	0.25
15000	Line Tension		0		

