



MIDWEST SURVEYS
 LOGGING - PERFORATING - CONSULTING SERVICES
 P.O. Box 68, Osawatomie, KS 66064
 913 / 755 - 2128

GAMMA RAY / NEUTRON / CCL

File No. Company A&L Energy Operations, LLC
 Well Thoren No.- 118
 Field Little Wakarusa

County Douglas State Kansas

Location 1685' FNL & 1685' FEL
 SW-NE-SW-NE

Other Services
 Perforate

Sec. 6 Typ. 14s Rge. 22e
 Permit Dam Log Measured From GL
 Drilling Measured From GL

Elevation
 K.B. NA
 D.F. NA
 G.L. NA

Date 08-29-2013

Run Number One

Depth Drier 752.0

Depth Logger 733.7

Bottom Logged Interval 732.7

Top Log Interval 20.0

Fluid Level Full

Type Fluid Water

Density / viscosity NA

Salinity - PPM Cl NA

Max. Recorded Temp NA

Estimated Cement Top 0.0

Equipment No. Location 107 Osawatomie

Recorded By Steve Mandisch

Witnessed By Jerald Heekin

BORE-HOLE RECORD

RUN	BIT	FROM	TO	SIZE	WGT.	FROM	TO
No.							
One	9.875"	0.0	41.75	7.00"	17.0 #	0.0	41.75
Two	6.125"	41.75	752.0	2.875"	6.5 #	0.0	741.0

<<< Fold Here >>>

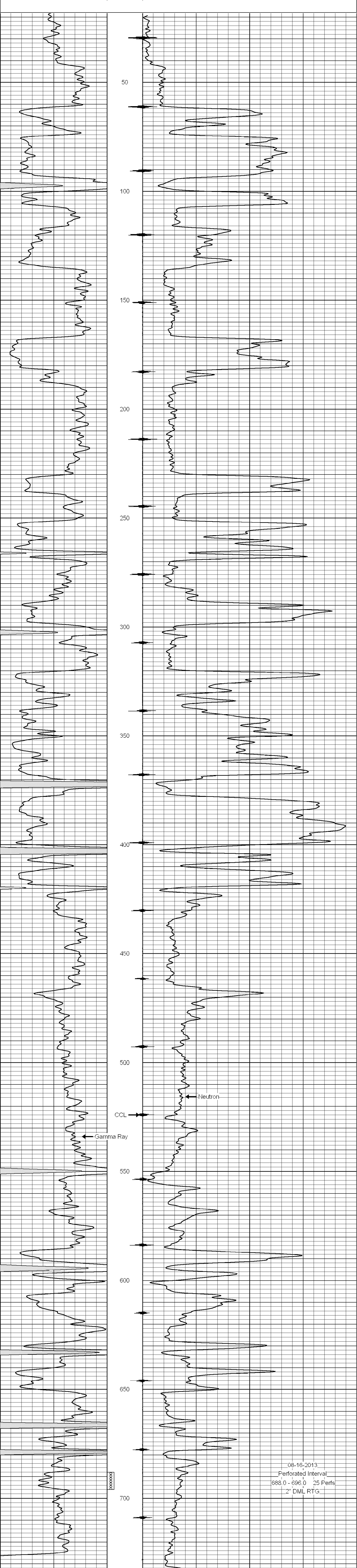
All interpretations are opinions based on inferences from electrical or other measurements and we cannot and do not guarantee the accuracy or correctness of any interpretation, and we shall not, except in the case of gross or willful negligence on our part, be liable or responsible for any loss, costs, damages, or expenses incurred or sustained by anyone resulting from any interpretation made by any of our officers, agents or employees. These interpretations are also subject to our general terms and conditions set out in our current Price Schedule.

Comments

Drilling Contractor :
 McGown Drilling, Inc
 Rig - 2

Database File: thoren118.db
 Dataset Pathname: pass1
 Presentation Format: gr-n-ccl
 Dataset Creation: Sat Jun 29 11:34:05 2013 by Log SCH 111116
 Charted by: Depth in Feet scaled 1:240

0 Gamma Ray (cps) 150 -1 CCL 1 10 Neutron (cps) 2100



0 Gamma Ray (cps) 150 -1 CCL 1 10 Neutron (cps) 2100