



MIDWEST SURVEYS
 LOGGING - PERFORATING - CONSULTING SERVICES
 P.O. Box 68, Osawatomie, KS 66064
 913 / 755 - 2128

GAMMA RAY / NEUTRON / CCL

File No. _____

Company **A&L Energy Operations, LLC**

Well **Thoren No. - 113**

Field **Little Wakarusa**

County **Douglas** State **Kansas**

Location **1695' FNL & 1355' FEL**

SE-NE-SW-NE

Other Services
 Perforate

Sec. 6
 Permanent Datum
 Log Measured From
 Drilling Measured From

Typ. 14s
 Elevation
 K.B. NA
 D.F. NA
 G.L. NA

Date
 Run Number
 Depth Difer

08-29-2013
 One
 742.0

Depth Logger
 Bottom Logged Interval
 Top Log Interval

727.8
 726.8
 20.0

Fluid Level
 Full

Type Fluid
 Density / Viscosity
 Salinity - PPM Cl
 Max. Recorded Temp
 Estimated Cement Top
 Equipment No.
 Recorded By
 Witnessed By

BORE-HOLE RECORD				CASING RECORD			
RUN	BIT	FROM	TO	SIZE	WGT.	FROM	TO
One	9.875"	0.0	42.7	7.00"	17.0 #	0.0	42.70
Two	6.125"	42.7	742.0	2.875"	6.5 #	0.0	733.60

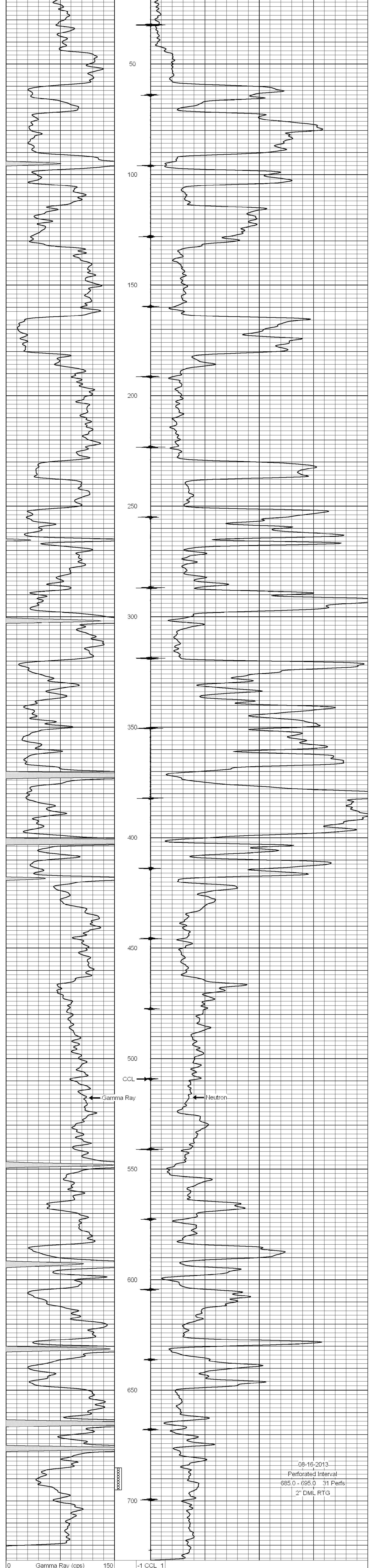
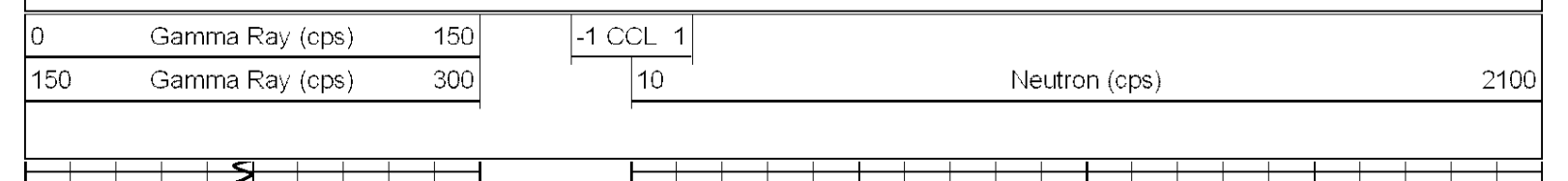
<<< Fold Here >>>

All interpretations are opinions based on inferences from electrical or other measurements and we cannot and do not guarantee the accuracy or correctness of any interpretation, and we shall not, except in the case of gross or willful negligence on our part, be liable or responsible for any loss, costs, damages, or expenses incurred or sustained by anyone resulting from any interpretation made by any of our officers, agents or employees. These interpretations are also subject to our general terms and conditions set out in our current Price Schedule.

Comments

Drilling Contractor :
 McGown Drilling, Inc
 Rig - 2

Database File: thoren113.db
 Dataset Pathname: pass1
 Presentation Format: gr-n-ccl
 Dataset Creation: Sat Jun 29 12:43:17 2013 by Log SCH 111116
 Charted by: Depth in Feet scaled 1:240



08-16-2013
 Perforated Interval
 685.0 - 695.0 31 Perfs
 2" DML RTG

