



MIDWEST SURVEYS
 LOGGING - PERFORATING - CONSULTING SERVICES
 P.O. Box 688, Osawatomie, KS 66064
 913 / 755 - 2128

GAMMA RAY / NEUTRON / CCL

File No. _____

Company **Phayn Resources, LLC.**

Well **Werts No. - 8**

Field **Little Wakarusa**

County **Douglas** State **Kansas**

Location **335' FNL & 400' FEL**

Other Services **Perforate**

Sec. **6** Twp. **14S** Rge. **21E**

Permanent Datum **GL** Elevation **N/A**

Log Measured From **GL** K.B. **NA**

Drilling Measured From **GL** D.F. **NA**

Date **11-24-2010** Elevation **GL, NA**

Run Number **One**

Depth Driller **790.0**

Depth Logger **779.8**

Bottom Logged Interval **777.8**

Top Log Interval **29.0**

Fluid Level **Full**

Type Fluid **Water**

Density / Viscosity **NA**

Salinity - PPM Cl **NA**

Max. Recorded Temp **NA**

Estimated Cement Top **0.0**

Equipment No. **104** Location **Osawatomie**

Recorded By **Gary Winovich**

Witnessed By **Brad Kramer**

RUN	BIT	FROM	TO	SIZE	WGT.	FROM	TO
One	9.875"	0.0	44.6	7.00"	0.0	0.0	44.6
Two	5.625"	44.6	790.0	2.875"	0.0	0.0	780.0

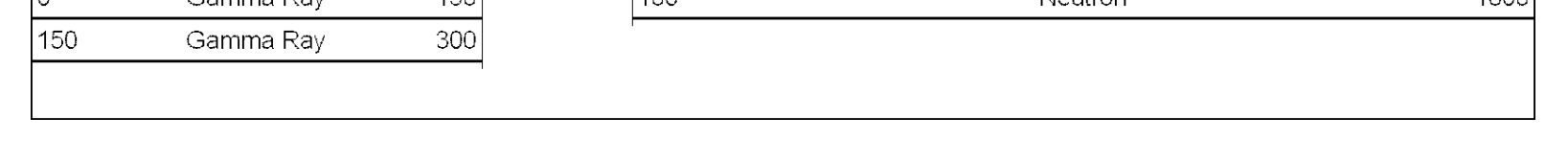
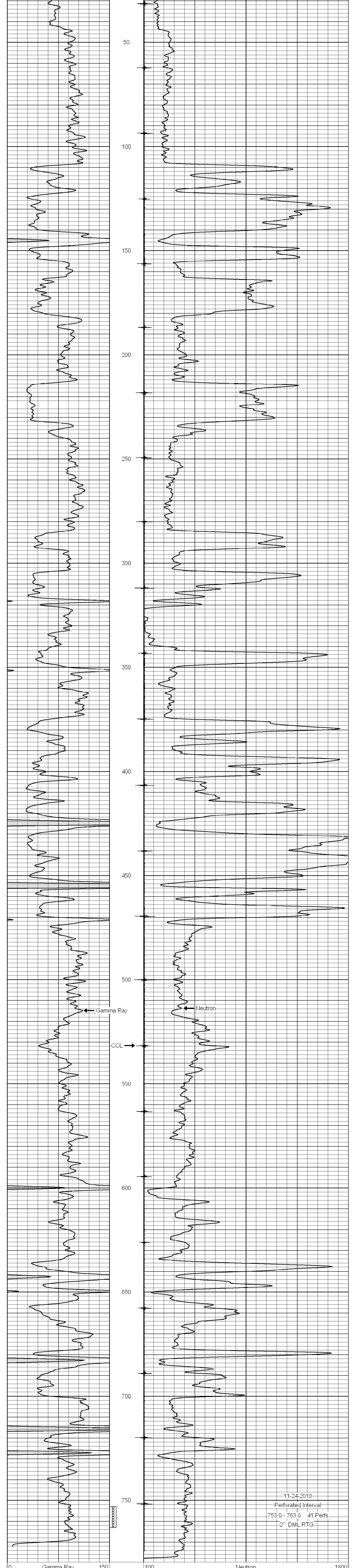
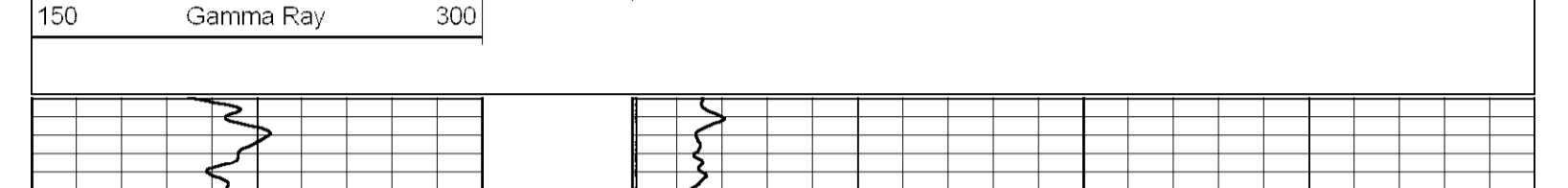
<<< Fold Here >>>

All interpretations are opinions based on inferences from electrical or other measurements and we cannot and do not guarantee the accuracy or correctness of any interpretation, and we shall not, except in the case of gross or willful negligence on our part, be liable or responsible for any loss, costs, damages, or expenses incurred or sustained by anyone resulting from any interpretation made by any of our officers, agents or employees. These interpretations are also subject to our general terms and conditions set out in our current Price Schedule.

Comments

Drilling Contractor :
 Evans Energy & Development, Inc.

Database File: werts8.db
 Dataset Pathname: pass1
 Presentation Format: gr-n-ccl
 Dataset Creation: Wed Nov 24 09:21:40 2010 by Log Warrior Version 6.6
 Charted by: Depth in Feet scaled 1:240



11-24-2010
 Perforated Interval
 753.0 - 763.0 41 Perfs
 2" DML RTG