



MIDWEST SURVEYS
 LOGGING - PERFORATING - CONSULTING SERVICES
 P.O. Box 68, Osawatomie, KS 66064
 913 / 755 - 2128

GAMMA RAY / NEUTRON / CCL

File No. Company Petroleum Technologies, Inc
 Well Sawyer No. 2-A
 Field Longanecker Southeast
 County Johnson State Kansas

Location 1485' FSL & 5115' FEL
 SW-SW-NW-SW

Sec 29 Typ 14s Rgs 22e
 Permanent Datum GL Elevation NA
 Log Measured From GL
 Drilling Measured From GL

Date 07-14-2011
 Run Number One
 Depth Driller 890.0
 Depth Logger 873.3
 Bottom Logged Interval 871.3
 Top Log Interval 250.0
 Fluid Level Full

Type Fluid Water
 Density / Viscosity NA
 Salinity - PPM Cl NA
 Max Recorded Temp NA
 Estimated Cement Top 0.0
 Equipment No. 107
 Location Osawatomie
 Recorded By Steve Windisch
 Addressed By Rick Singleton

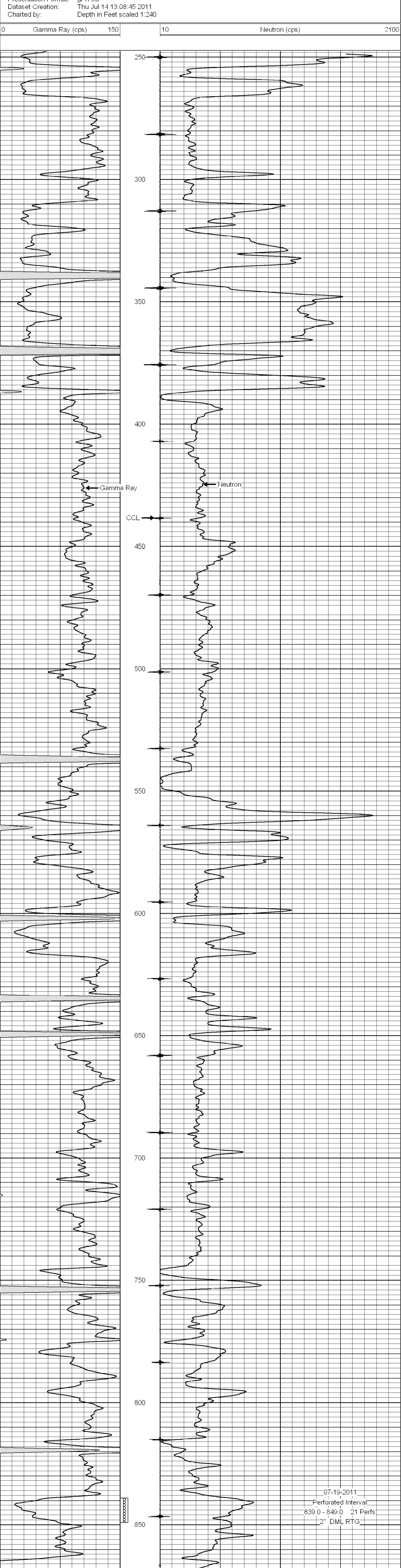
BORE-HOLE RECORD				CASING RECORD			
NO.	BIT	FROM	TO	SIZE	WGT.	FROM	TO
One	9.875"	0.0	21.6	7.00"		0.0	21.6
Two	5.625"	21.6	890.0	2.875"		0.0	879.5

<<< Fold Here >>>
 All interpretations are opinions based on inferences from electrical or other measurements and we cannot and do not guarantee the accuracy or correctness of any interpretation, and we shall not, except in the case of gross or willful negligence on our part, be liable or responsible for any loss, costs, damages, or expenses incurred or sustained by anyone resulting from any interpretation made by any of our officers, agents or employees. These interpretations are also subject to our general terms and conditions set out in our current Price Schedule.

Comments

Drilling Contractor :
 Evavs Energy & Development, Inc.

Database File: sawyr2a.db
 Dataset Pathname: pass1
 Presentation Format: gr-n-ccl
 Dataset Creation: Thu Jul 14 13:08:45 2011
 Charted by: Depth in Feet scaled 1:240



07-19-2011
 Perforated Interval
 839.0 - 849.0 21 Perfs
 2" DML RTG