



MIDWEST SURVEYS
 LOGGING - PERFORATING - CONSULTING SERVICES
 P.O. Box 68, Osawatomie, KS 66064
 913 / 755 - 2128

GAMMA RAY / NEUTRON / CCL

File No.

Company **Altavista Energy, Inc.**

Well **Wise No. AI-4**

Field **Gardner**

County **Johnson**

State **Kansas**

Location **844' FSL & 498' FEL
SW-NE-SE-SE**

Other Services

Sec. **16** Twp. **14S** Rge. **22E**

Permit Dam. **GL** Elevation **NA**

Log Measured From **GL** K.B. **NA**

Drilling Measured From **GL** D.F. **NA**

Date **6-24-2011** Elevation **GL, NA**

Run Number **One**

Depth Logger **895.0**

Bottom Logged Interval **893.0**

Top Log Interval **20.0**

Fluid Level **Full**

Type Fluid **Water**

Density / Viscosity **NA**

Salinity - PPM Cl **NA**

Max. Recorded Temp **NA**

Estimated Cement Top **0.0**

Equipment No.	Location
104	Osawatomie
	Gary Wandsch
	Doug Evans

BORE-HOLE RECORD		CASING RECORD	
RUN No.	BIT FROM TO	SIZE	WTGT.
One	9.875' - 20.1	7.00"	0.0
Two	5.925' - 20.1	940.0	0.0
		2.875"	520.5
			Set
			At
			898.5

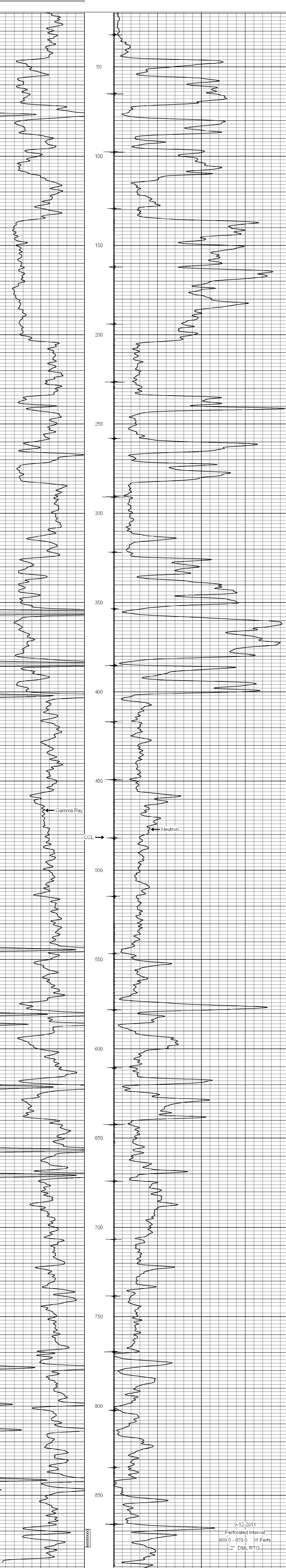
<<< Fold Here >>>

All interpretations are opinions based on inferences from electrical or other measurements and we cannot and do not guarantee the accuracy or correctness of any interpretation, and we shall not, except in the case of gross or willful negligence on our part, be liable or responsible for any loss, costs, damages, or expenses incurred or sustained by anyone resulting from any interpretation made by any of our officers, agents or employees. These interpretations are also subject to our general terms and conditions set out in our current Price Schedule.

Comments

Drilling Contractor :
Evans Energy & Development, Inc.

Database File: wise-4ai.db
 Dataset Pathname: pass1
 Presentation Format: gr-n-ccl
 Dataset Creation: Wed Aug 24 13:08:32 2011 by Log Warrior Version 6.6
 Charted by: Depth in Feet scaled 1:240



0 Gamma Ray 150 100 Neutron 1800
 150 Gamma Ray 300