



Sector Bond / Gamma Ray
CCL Log

(785) 625-3858

15-113-21345-00-00

API No.

Company Russell Oil, Inc.

Well Enochs No. 1

Field Welch-Bornholdt

County McPherson State Kansas

Location S/2-SW-NE

2310' FNL & 1980' FEL

Other Services

Perforate

Sec: 19 Twp: 20S Rge: 5W

Elevation

K.B. 1536

D.F. 1529

G.L. 1529

Permanent Datum Ground Level Elevation 1529

Log Measured From Kelly Bushing 7 Ft. Above Perm. Datum

Drilling Measured From Kelly Bushing

Run Number One

Date Survey 6/23/2011

Date Cementing 6/3/2011

Type Cementing Operation Primary

Depth Driller 3385

Depth Logger 3329

Logged Interval 3327 to 2300

Casing Driller 5.5 @ T.D.

Float Collar -- D.V. Tool 1111 @

Squeeze Depth 1111

Amount & Type Cement 1111

Amount & Type Admix 1111

Type Fluid In Hole Water

Fluid Level Full

Salinity PPM CL 1111

Weight lb/gal -- Vis. 1111

Approx. Logged Cement Top 2545

Calculated Cement Top 1111

Max. Hole Temperature 110

Tool No. R-1

Spacing Recorded 3-5

Equipment -- Location 72 Hays

Recorded By K. Ladrigan

Witnessed By Todd Brown

<<< Fold Here >>>

All interpretations are opinions based on inferences from electrical or other measurements and we cannot and do not guarantee the accuracy or correctness of any interpretation, and we shall not, except in the case of gross or willful negligence on our part, be liable or responsible for any loss, costs, damages, or expenses incurred or sustained by anyone resulting from any interpretation made by any of our officers, agents or employees. These interpretations are also subject to our general terms and conditions set out in our current Price Schedule.

Comments

Thank you for using LOG TECH, INC. 785.625.3858

Lyons, KS., East to Plum Road., South to Dakota Road, 1 East, .5 South,
West Into.



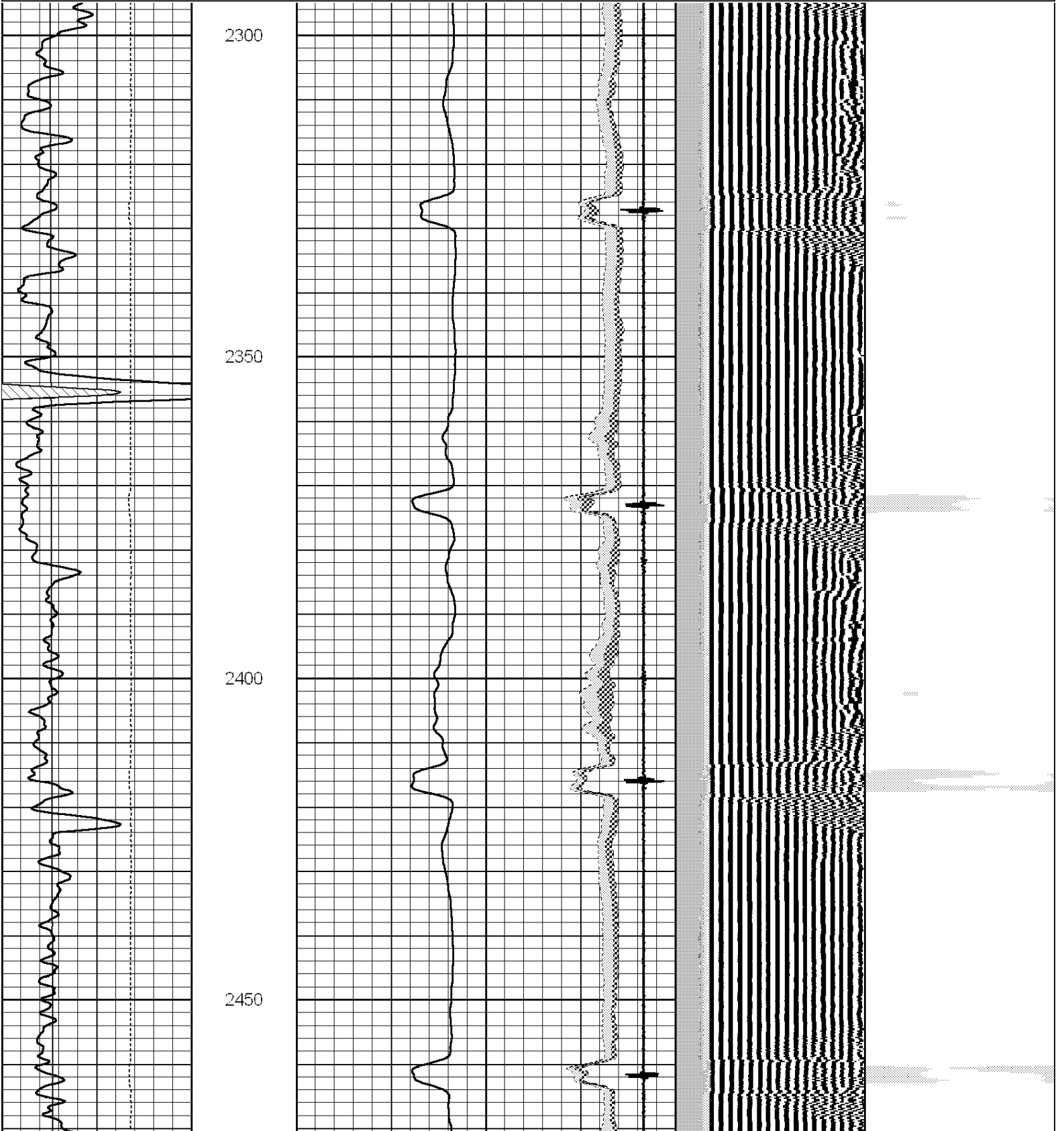
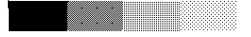
Main Pass

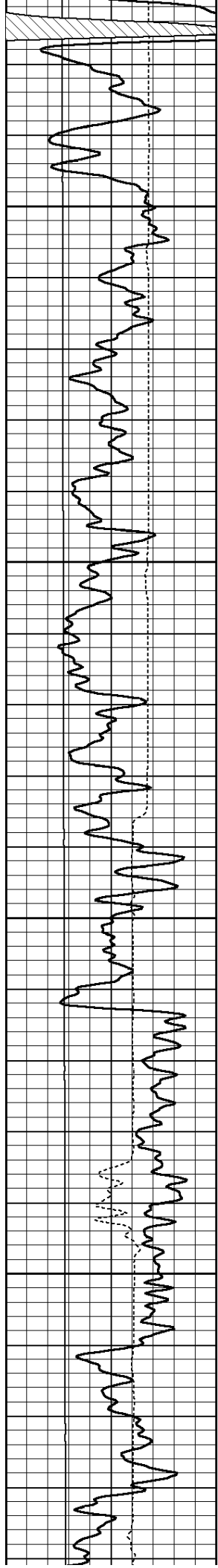
Database File: russell-enochs1.db
 Dataset Pathname: sgrcbl/run1/pass3.1
 Presentation Format: scbl02
 Dataset Creation: Thu Jun 23 09:21:41 2011
 Charted by: Depth in Feet scaled 1:240

750	TT (usec)	70
0	GR	150
0	LTEN (lb)	3000

0	AMP (mV)	100	0	AMPAVG	150
0	AMPx5 (mV)	20	0	AMPMAX	150
0			0	AMPMIN	150
5	CCL				-1

200	VDL	1200	1	Cement Map	8
			25		75



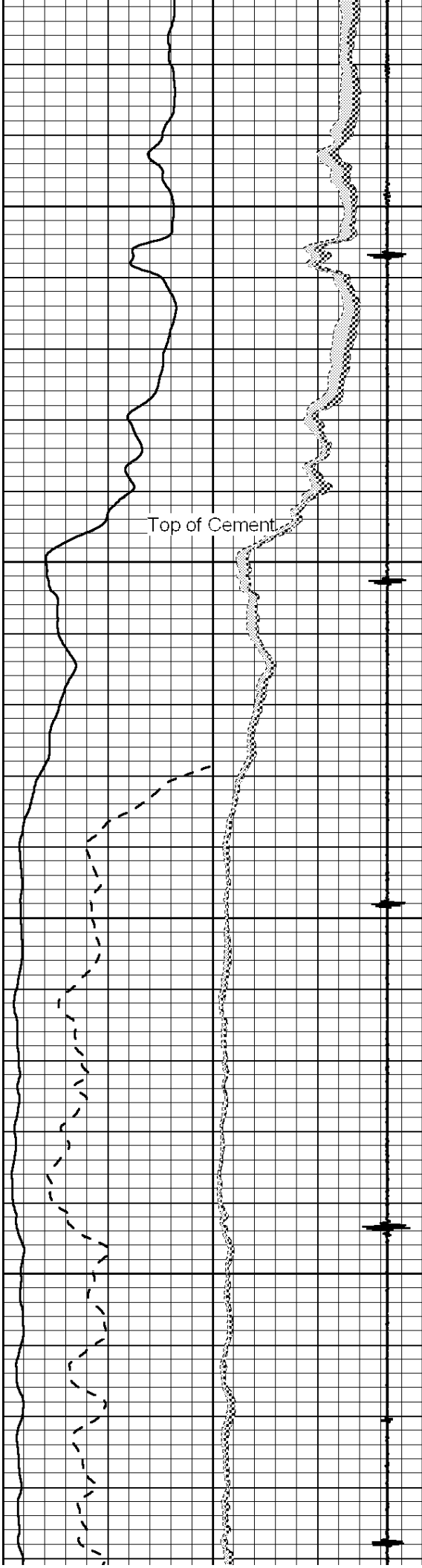


2500

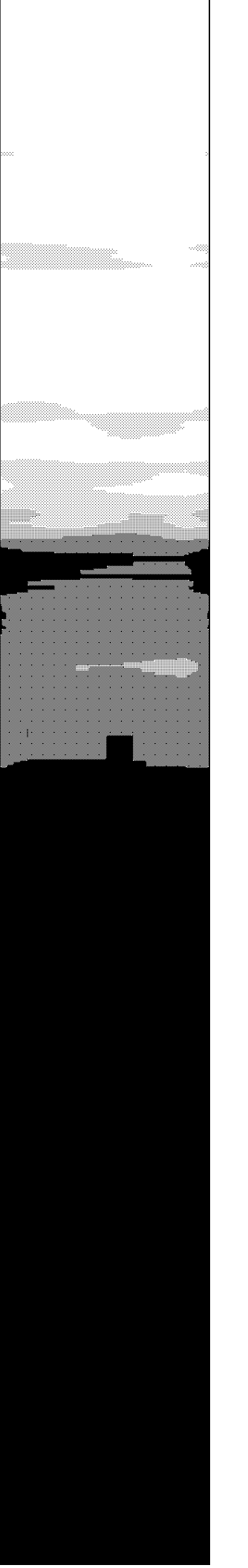
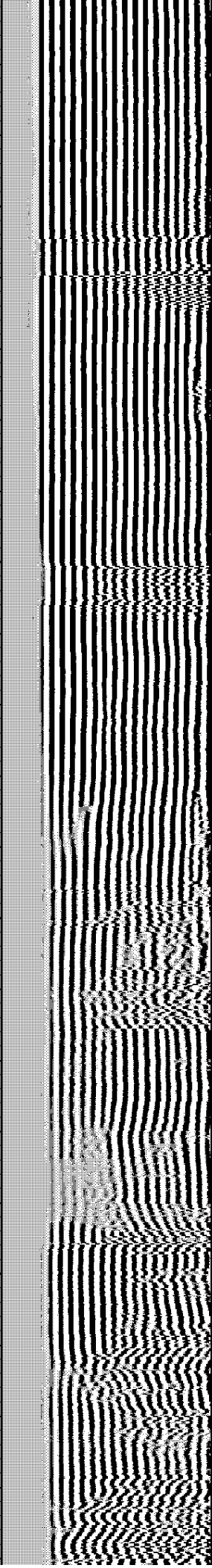
2550

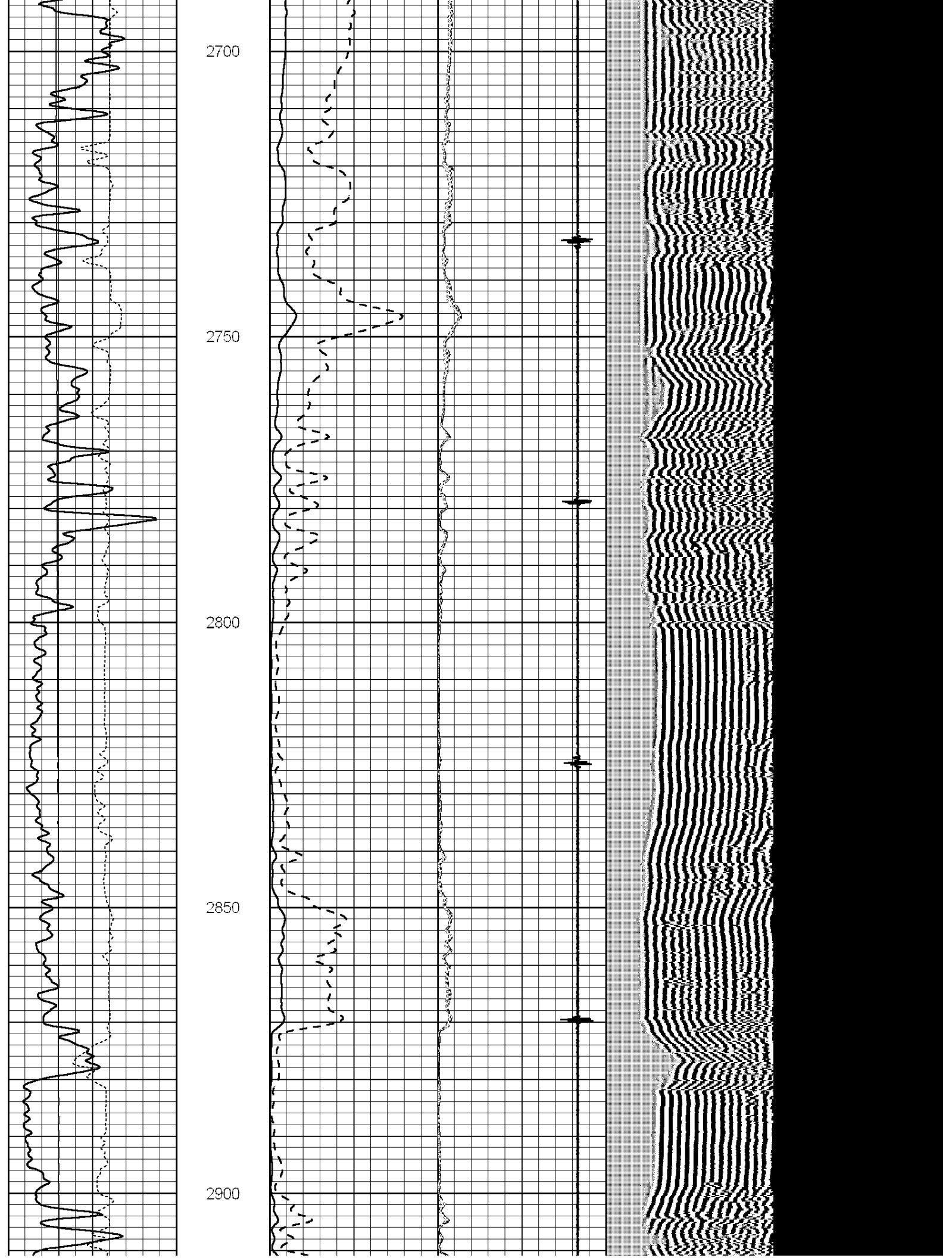
2600

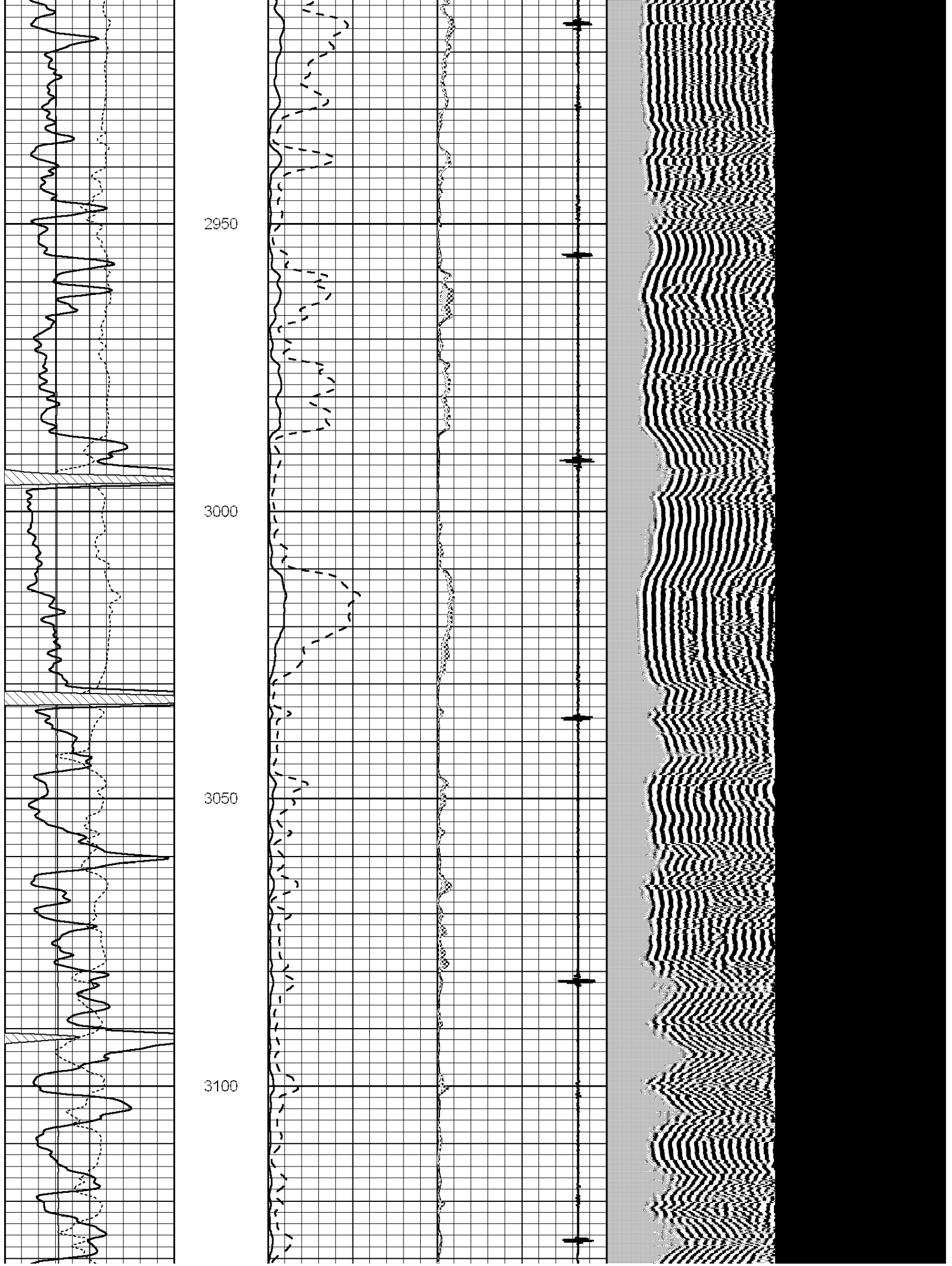
2650

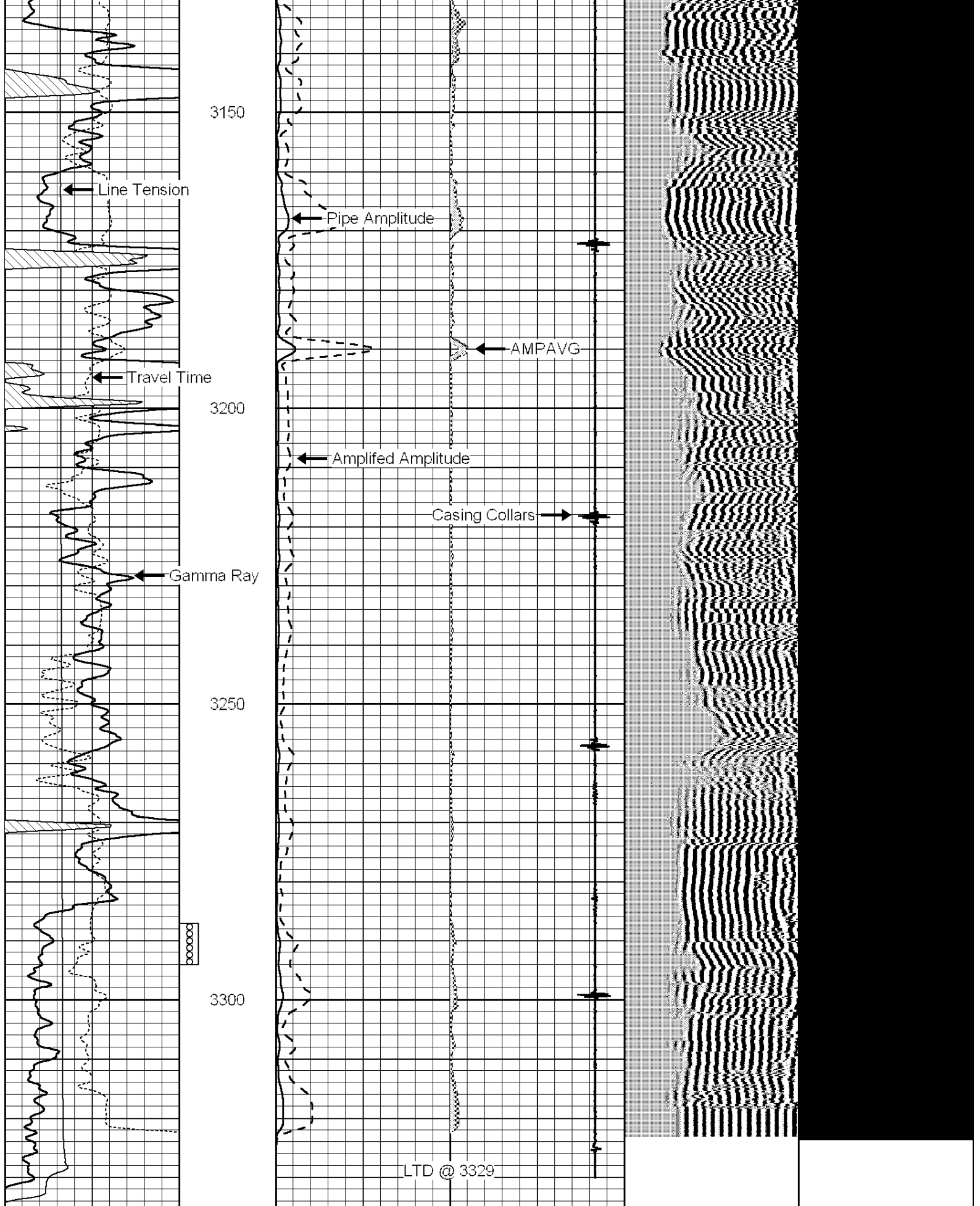


Top of Cement









3150

Line Tension

Pipe Amplitude

AMPAVG

Travel Time

3200

Amplified Amplitude

Casing Collars

Gamma Ray

3250

ooooo

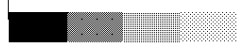
3300

LTD @ 3329

750	TT (usec)	70
0	GR	150
0	LTEN (lb)	3000

0	AMP (mV)	100	0	AMPAVG	150
0	AMPx5 (mV)	20	0	AMPMAX	150
0			0	AMPMIN	150

200	VDL	1200	1	Cement Map	8
			25		75

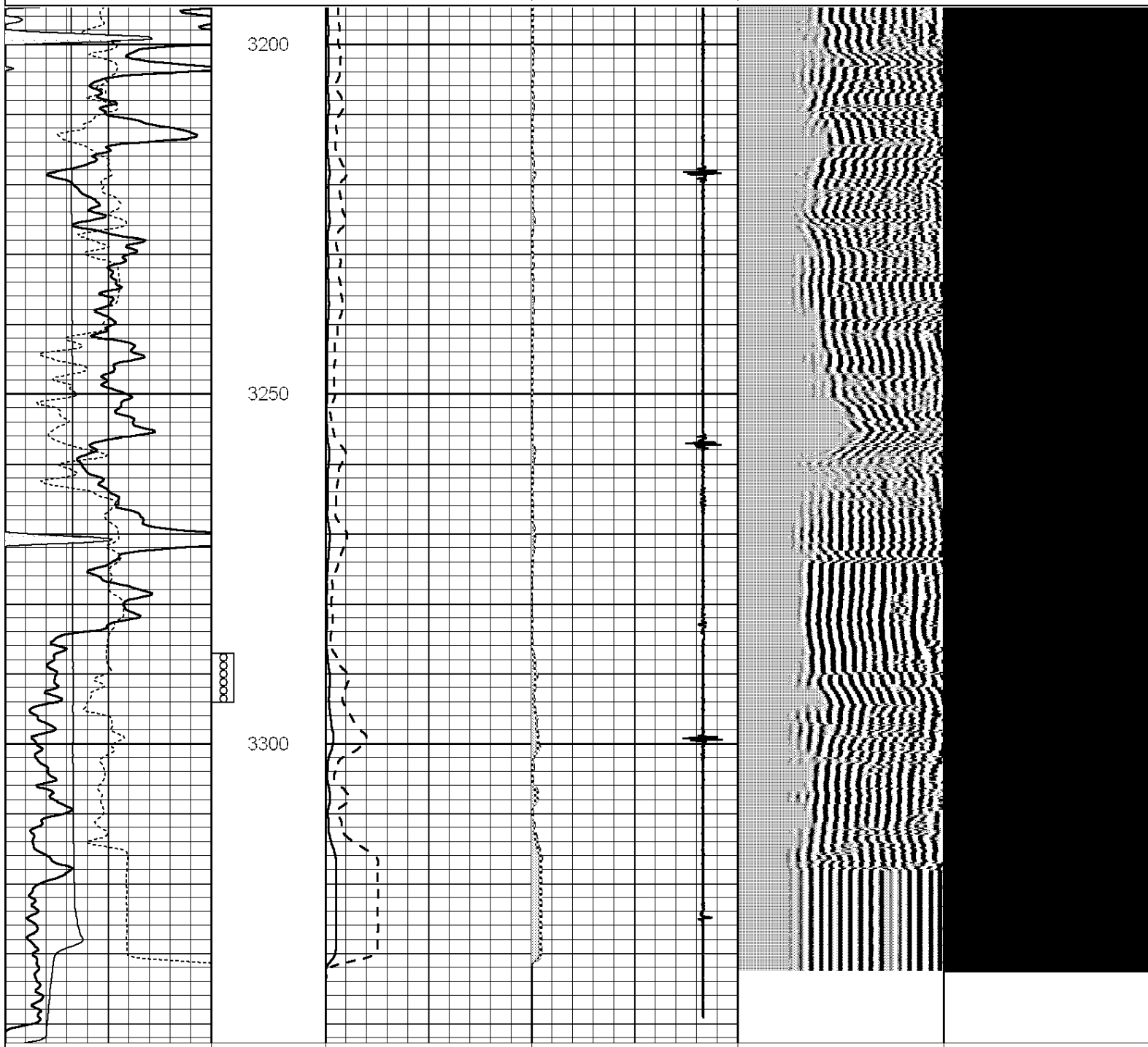




Repeat Section

Database File: russell-enochs1.db
 Dataset Pathname: sgrcbl/run1/pass2
 Presentation Format: scbl02
 Dataset Creation: Thu Jun 23 08:46:17 2011 by Log Std Casedhole 10081
 Charted by: Depth in Feet scaled 1:240

750	TT (usec)	70	0	AMP (mV)	100	0	AMPAVG	150	200	VDL	1200	1	Cement Map	8
0	GR	150	0	AMPx5 (mV)	20	0	AMPMAX	150				25		75
0	LTEN (lb)	3000	0	AMPMIN	150									
			5	CCL	-1									



750	TI (usec)	70
0	GR	150
0	LTEN (lb)	3000

0	AMP (mV)	100	0	AMPAVG	150
0	AMPx5 (mV)	20	0	AMPMAX	150

0			0	AMPMIN	150

5	CCL				-1

200	VDL	1200	1	Cement Map	8
			25		75

