



**Computer Processed  
Interpretation**

**DIGITAL LOG (785) 625-3858**

15-113-21,345-00-00

API No.

Company **Russell Oil, Inc.**  
 Well **Enochs No. 1**  
 Field **Welch-Bornholdt**  
 County **McPherson State**      **Kansas**

Location **S/2 SW NE**  
**2,310' FNL & 1,980' FEL**  
 Sec: **19**      Twp: **20S**      Rge: **5W**  
 Other Services  
 DIL/CNL/CDL  
 MEL

Permanent Datum **Ground Level**      Elevation **1529**  
 Log Measured From **Kelly Bushing**      **6** Ft. Above Perm. Datum  
 Drilling Measured From **Kelly Bushing**  
 K.B. 1535  
 D.F. 1529  
 G.L. 1529

Date Recorded **6/3/2011**

Depth Logger **3384**      Curve Definitions

SW      Water Saturation

SXO      Water Saturation In The Flushed Zone

VCL      Volume Of Clay

PHIE      Density - Neutron Crossplot Shale Corrected

BWV      Bulk Volume Water

BWMSXO      Bulk Volume Water In Flushed Zone

DCAL      Caliper

SPC      SP Corrected For Baseline

DGA      Apparent Grain Density

Payflag      If: PHIE > 2 %, VCL < 40 %, SPC > -10 , SW < 50 % & DCAL < 11

Recorded By      J. Long

Witnessed By      Todd Morgenstern

Analysis By      Dale Legleiter

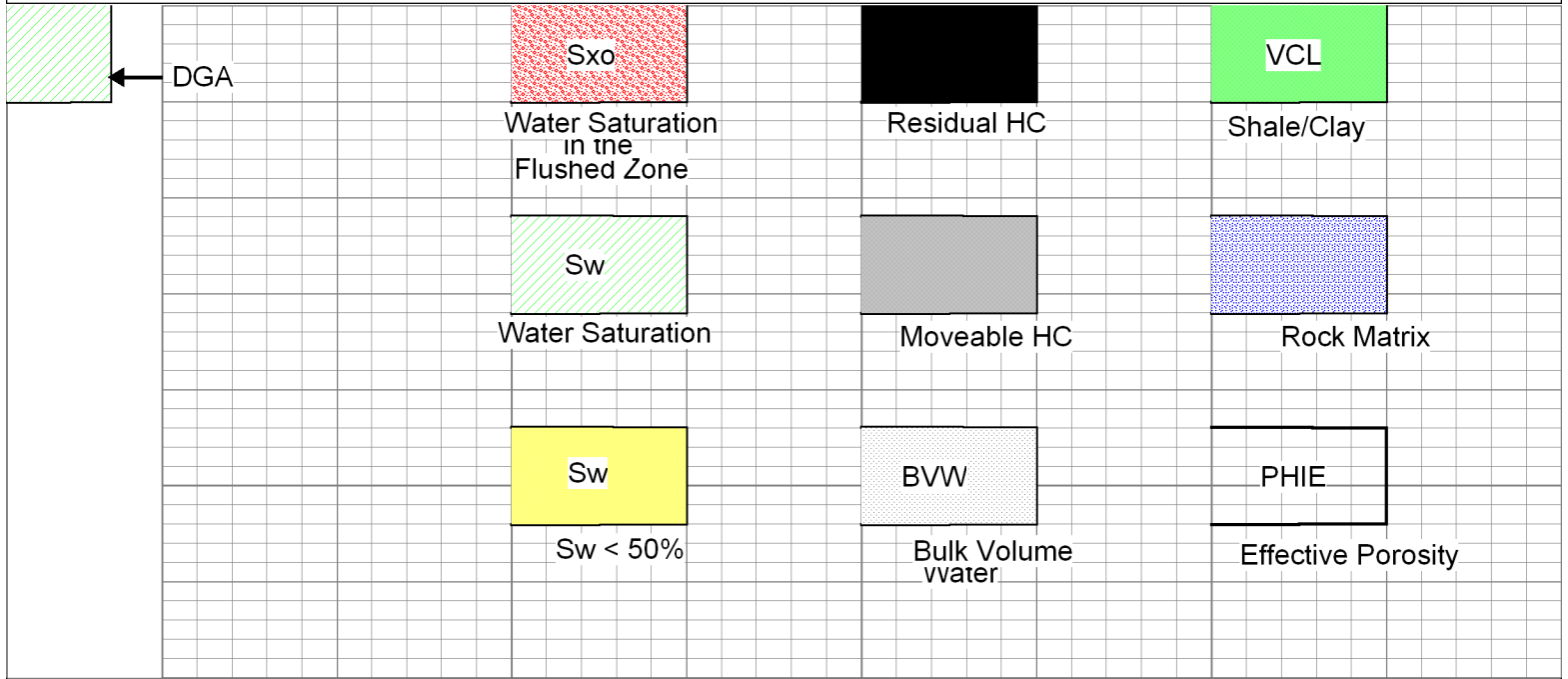
<<< Fold Here >>>

All interpretations are opinions based on inferences from electrical or other measurements and we cannot and do not guarantee the accuracy or correctness of any interpretation, and we shall not, except in the case of gross or willful negligence on our part, be liable or responsible for any loss, costs, damages, or expenses incurred or sustained by anyone resulting from any interpretation made by any of our officers, agents or employees. These interpretations are also subject to our general terms and conditions set out in our current Price Schedule.

**Comments**

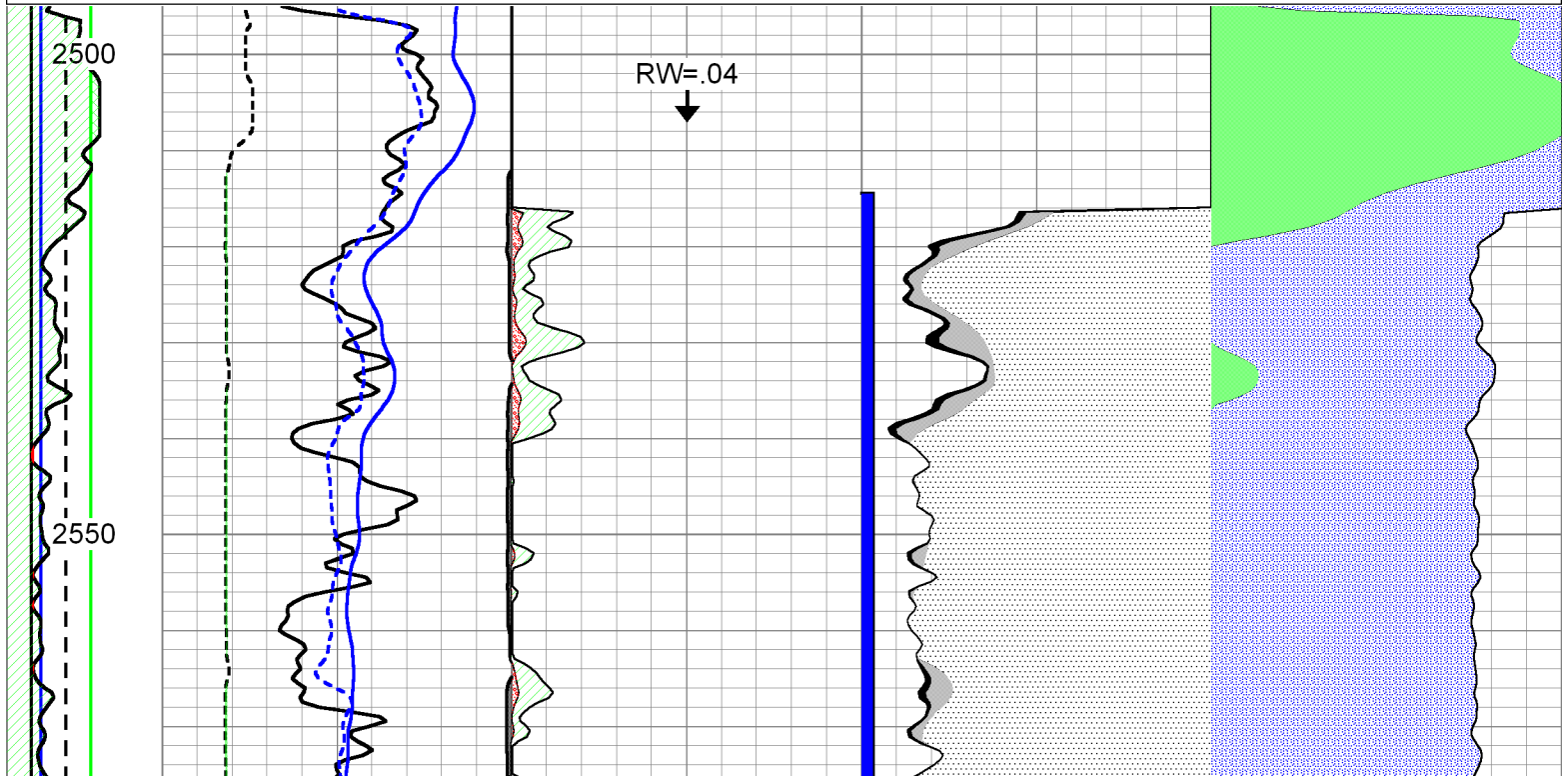
Thank you for using Log-Tech, Inc.  
[www.logtechinc.com](http://www.logtechinc.com)

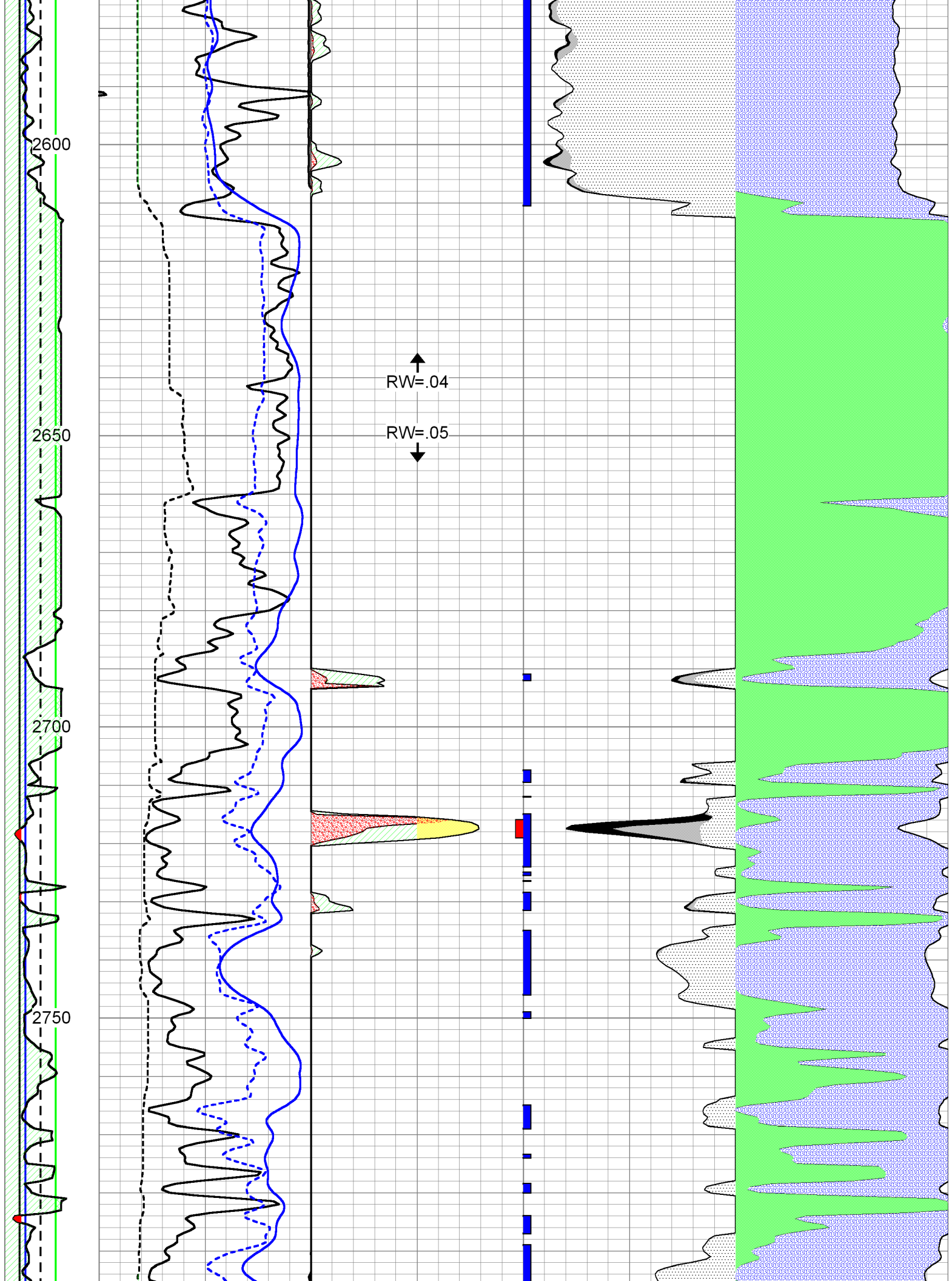
Lyons, South to Faxman Blacktop, East to Plum Street, 1 East, 1/2 North, West Into

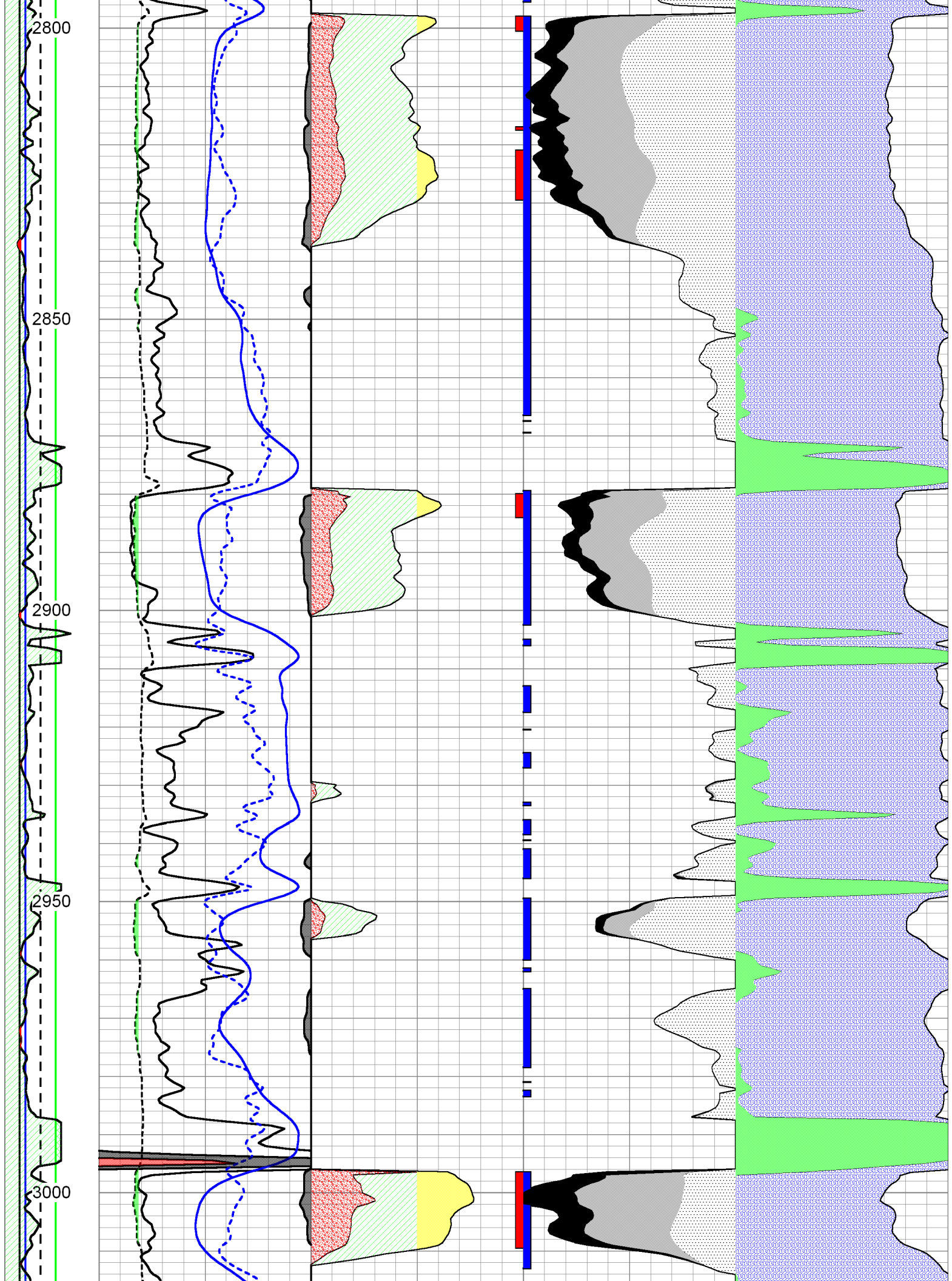


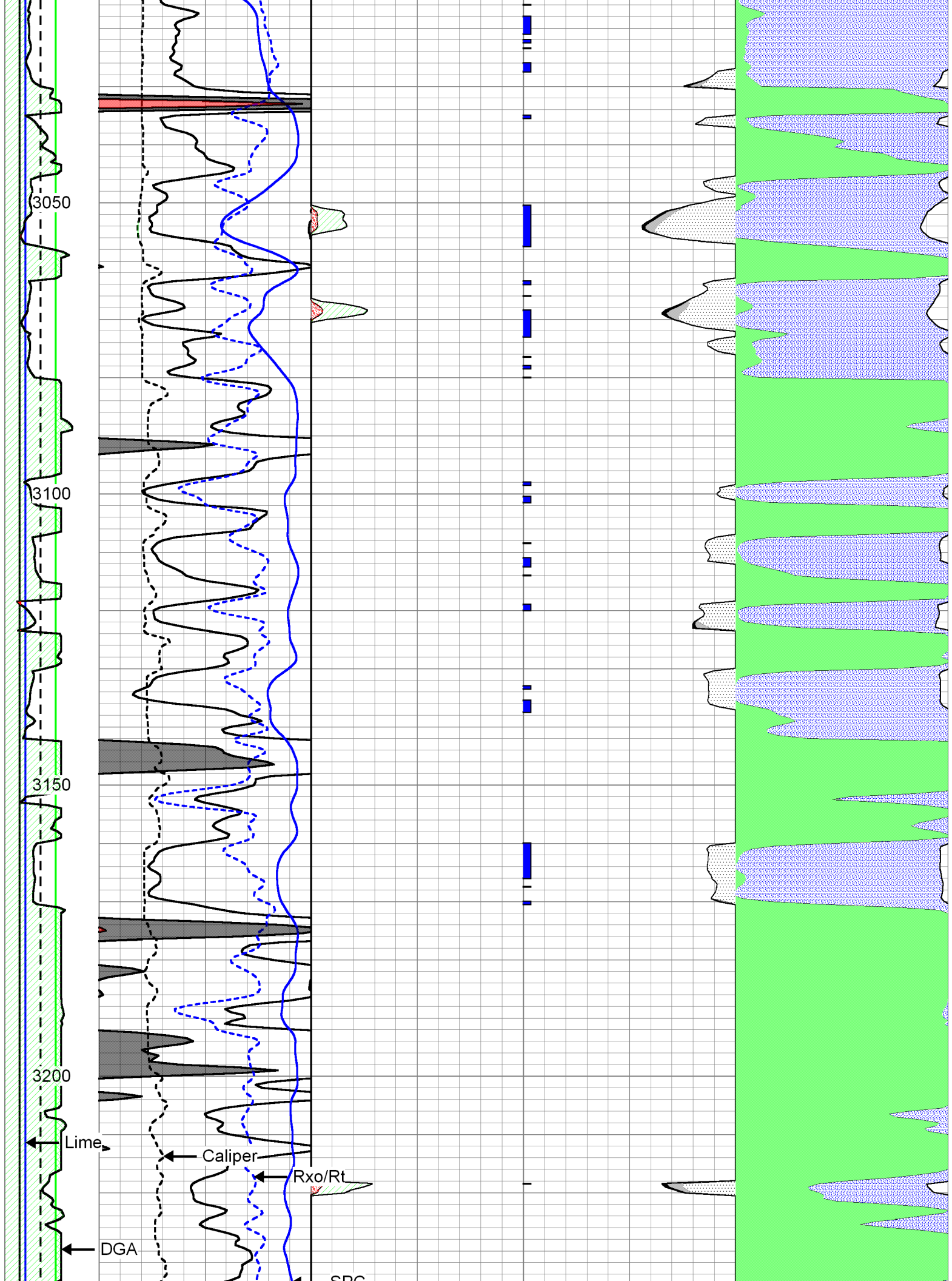
Database File: c:\warrior\data\russell\_enochs no. 1\russelloil\_enochs\_1hd.db  
 Dataset Pathname: cpi/russcpi  
 Presentation Format: calc  
 Dataset Creation: Fri Jun 03 10:37:05 2011  
 Charted by: Depth in Feet scaled 1:240

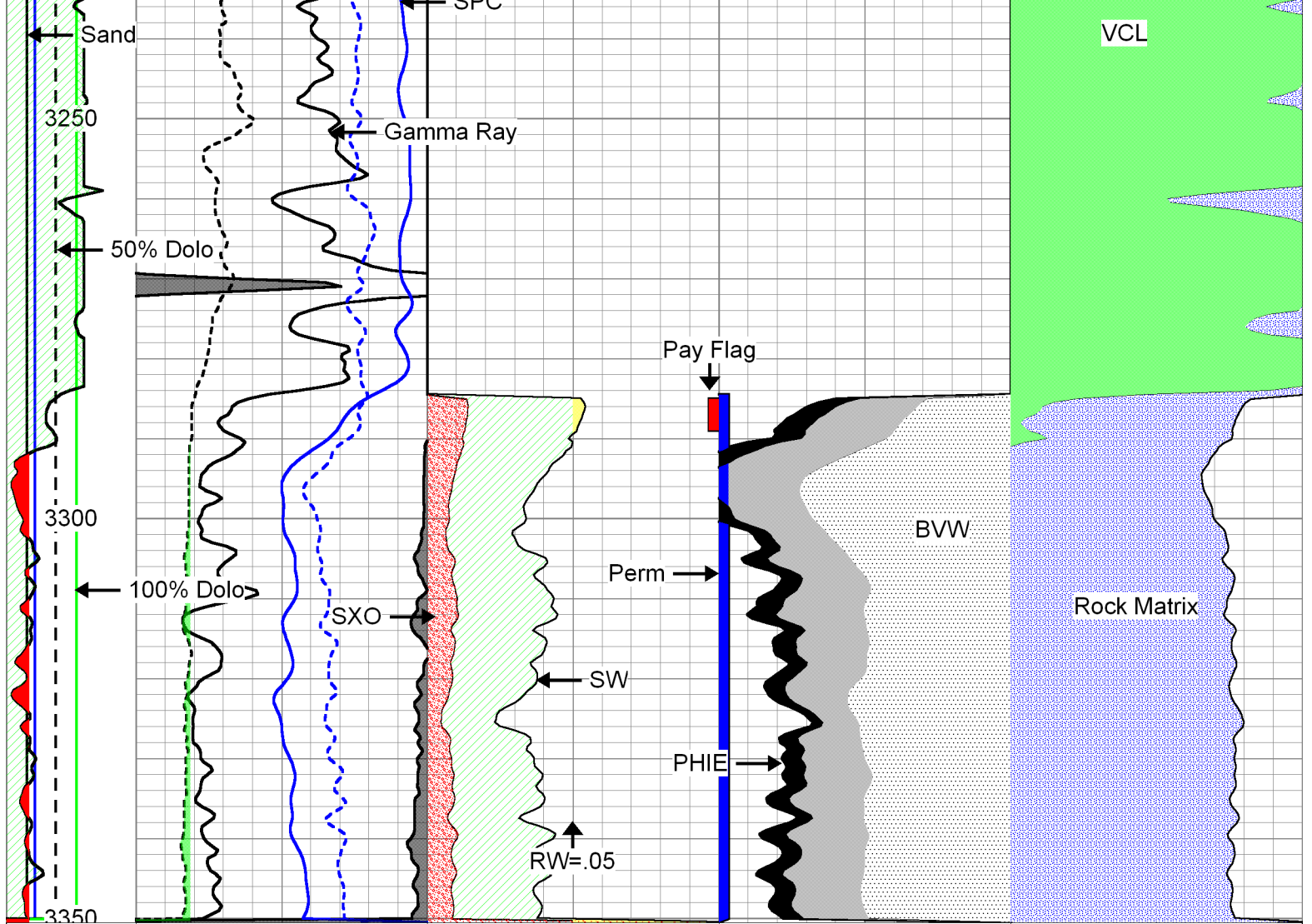
DGA	0	Gamma Ray	150	1	SW	0	0.3	PHIE	0	0	VCL	1	
2.6	3.1	6	DCAL (GAPI)	16	30	PAYFLAG	0	0.3	BVW	0	1	PHIE	0
		-150	SPC (mV)	0	1	SXO	0	0	PERM	30			
								0.3	BVWSXO	0			











DGA	0	Gamma Ray	150	1	SW	0	0.3	PHIE	0	0	VCL	1
2.6	3.1	DCAL (GAPI)	16	30	PAYFLAG	0	0.3	BVW	0	1	PHIE	0
		-150 SPC (mV)	0	1	SXO	0	0	PERM	30			
							0.3	BVWSXO	0			