



SUPERIOR
Hays,
Kansas

**DUAL RECEIVER
CEMENT BOND LOG**

Company GRAND MESA OPERATING
Well SPONEY #1-33
Field
County GOVE
State KANSAS

Company GRAND MESA OPERATING
Well SPONEY #1-33
Field
County GOVE State KANSAS

Location: API #: 15-063-21926-0000
NE - NW - SW - SW
1052' FSL & 583' FWL
SEC 33 TWP 13S RGE 31W

Permanent Datum GROUND LEVEL Elevation 2929
Log Measured From KELLY BUSHING 5' A.G.L.
Drilling Measured From KELLY BUSHING

Other Services
PERF
Elevation
K.B. 2934
D.F. 2932
G.L. 2929

Date	8/12/11			
Run Number	ONE			
Depth Driller	4671			
Depth Logger	4650			
Bottom Logged Interval	4648			
Top Log Interval	3400			
Open Hole Size	7 7/8			
Type Fluid	WATER			
Density / Viscosity				
Max. Recorded Temp.				
Estimated Cement Top	3540			
Time Well Ready				
Time Logger on Bottom	747			
Equipment Number	HAYS,KANSAS			
Location	R.SMITH			
Recorded By	JOHN JOHNSON			
Witnessed By				
Run Number	Borehole Record		Tubing Record	
Bit	From	To	Size	Weight
				From
				To
Casing Record	Size	Wgt/Ft	Top	Bottom
Surface String	8 5/8		0	222
Prot. String				
Production String	5 1/2			
Liner				

<<< Fold Here >>>

All interpretations are opinions based on inferences from electrical or other measurements and we cannot and do not guarantee the accuracy or correctness of any interpretation, and we shall not, except in the case of gross or willful negligence on our part, be liable or responsible for any loss, costs, damages, or expenses incurred or sustained by anyone resulting from any interpretation made by any of our officers, agents or employees. These interpretations are also subject to our general terms and conditions set out in our current Price Schedule.

Comments

THANK YOU FOR USING SUPERIOR WELL SERVICE HAYS,KANSAS (785) 628-6395
DIRECTIONS
OAKLEY,KS. S TO JAYHAWKER RD.(MONUMENT ROCK SIGN), 4 E. TO THE "T", 3 1/4 NORTH,
EAST INTO



SUPERIOR
Hays,
Kansas

DV TOOL

Database File: 7480grb.db
 Dataset Pathname: pass3
 Presentation Format: cbl02d
 Dataset Creation: Fri Aug 12 15:25:46 2011 by Log Std Casedhole 08121
 Charted by: Depth in Feet scaled 1:240

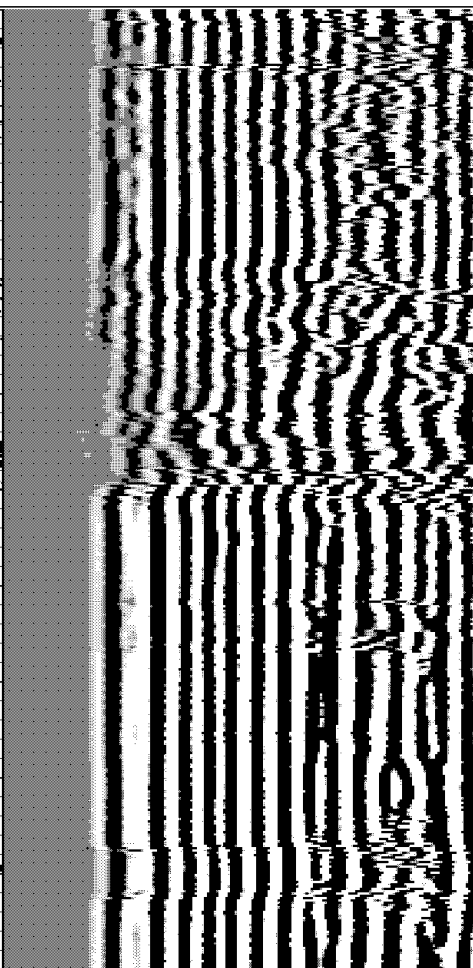
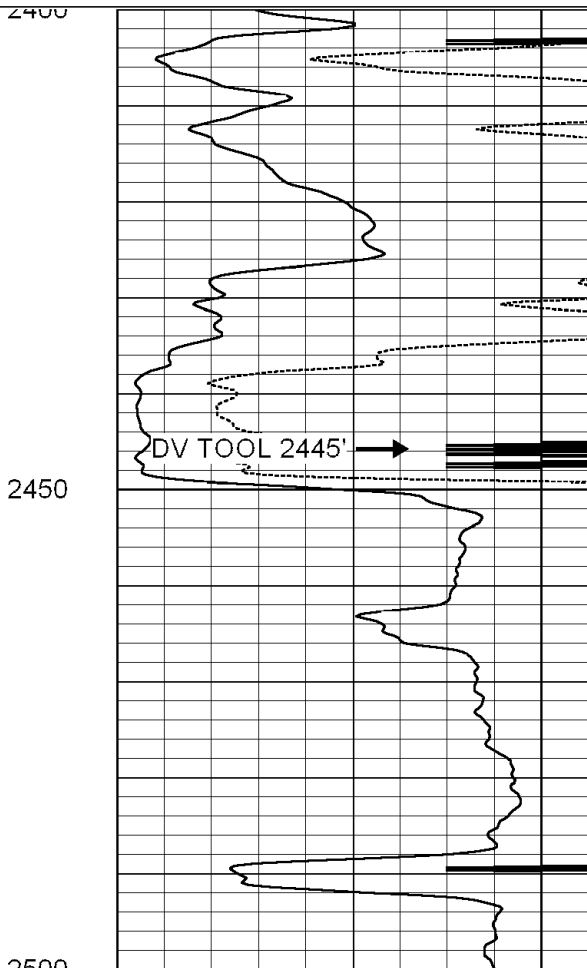
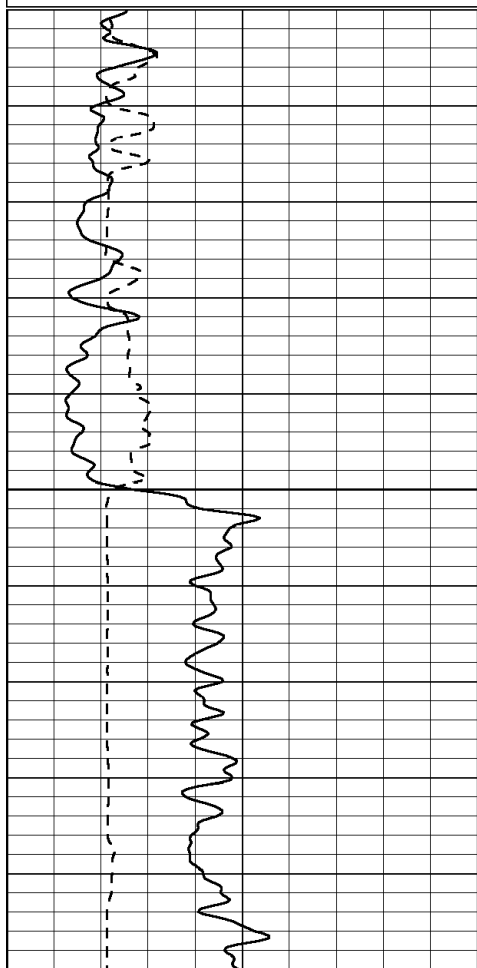
200 TT5 (usec) 1000

 0 Gamma Ray (GAPI) 150

0 Amplified Amplitude (mV) 20

 0 AMPLITUDE (mV) 100
 9 Collar Locator -1

200 Variable Density 1000



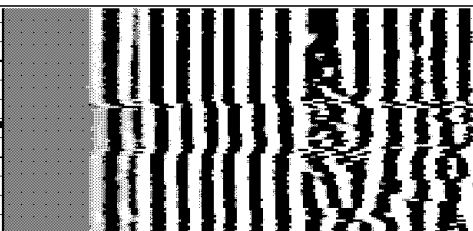
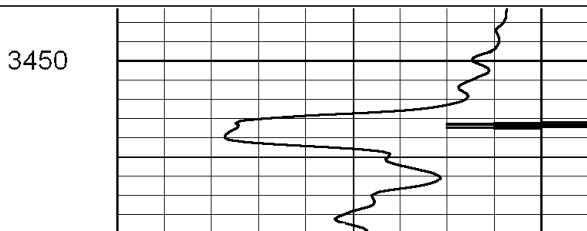
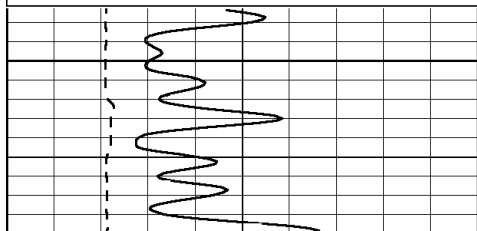
200 TT5 (usec) 1000

 0 Gamma Ray (GAPI) 150

0 Amplified Amplitude (mV) 20

 0 AMPLITUDE (mV) 100
 9 Collar Locator -1

200 Variable Density 1000



Database File: 7480grb.db
 Dataset Pathname: pass2
 Presentation Format: cbl02d
 Dataset Creation: Fri Aug 12 14:54:57 2011 by Log Std Casedhole 08121
 Charted by: Depth in Feet scaled 1:240

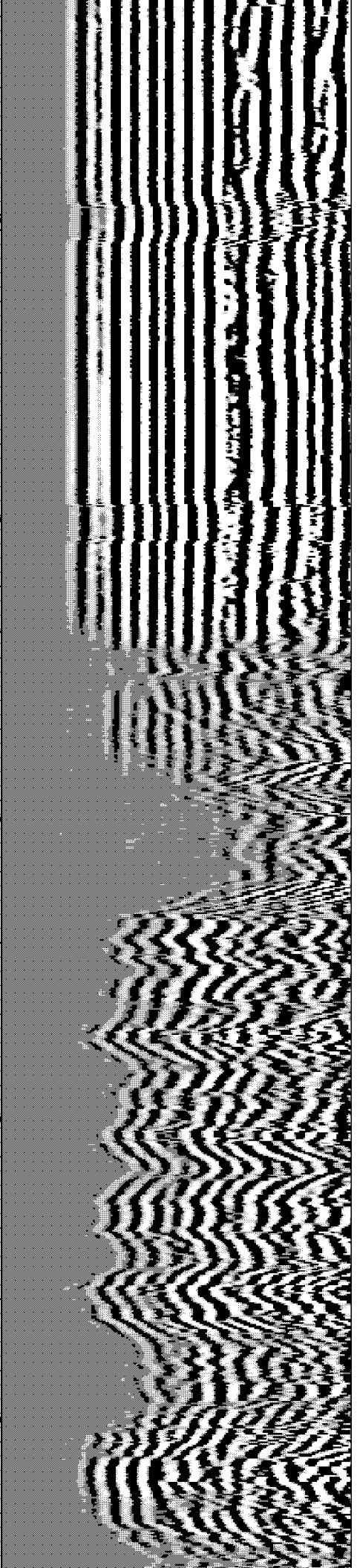
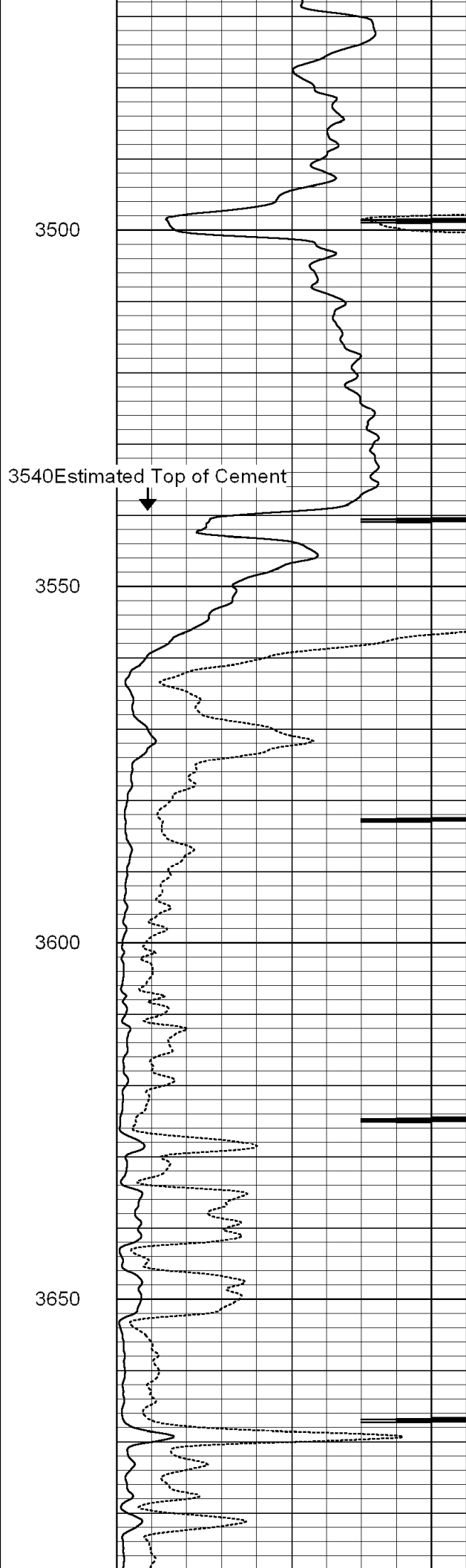
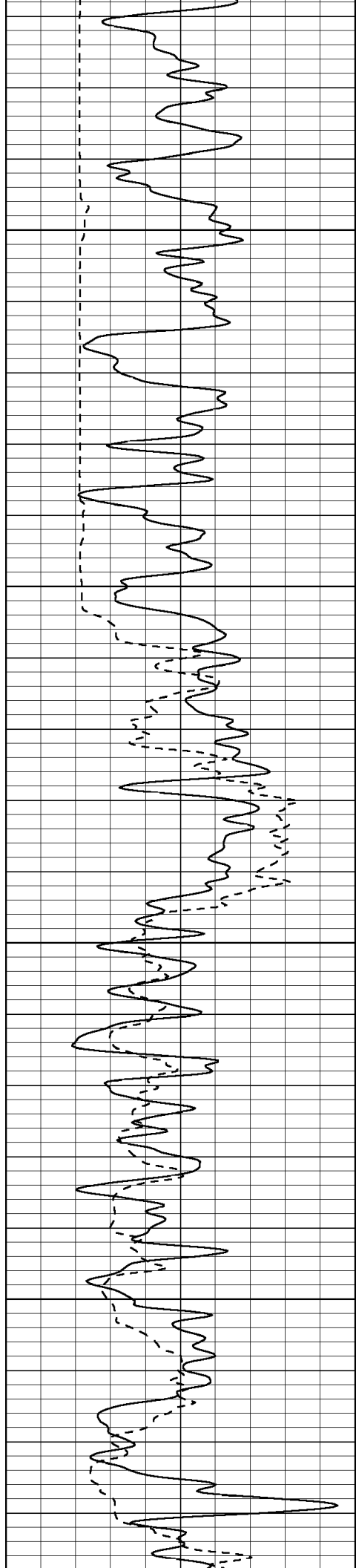
200 TT5 (usec) 1000

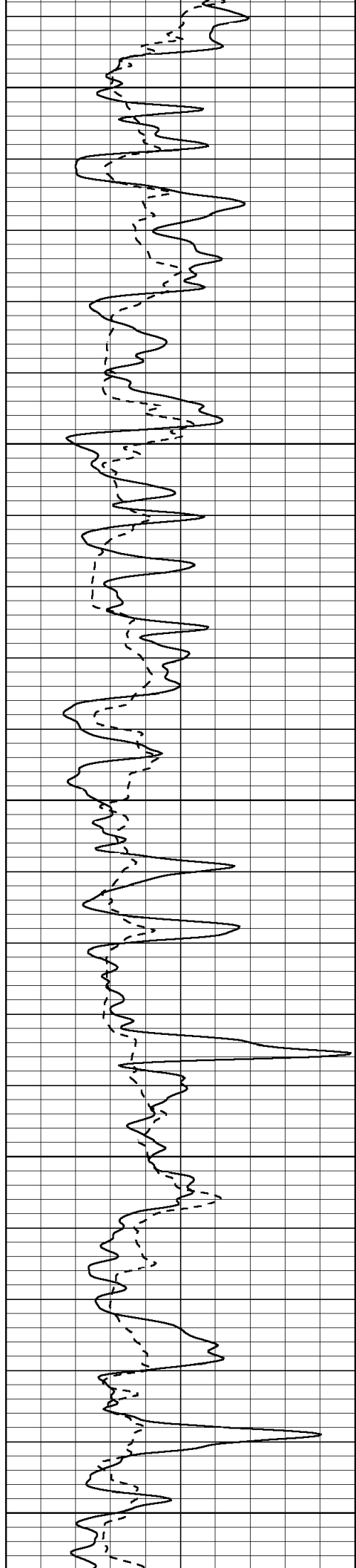
 0 Gamma Ray (GAPI) 150

0 Amplified Amplitude (mV) 20

 0 AMPLITUDE (mV) 100
 9 Collar Locator -1

200 Variable Density 1000





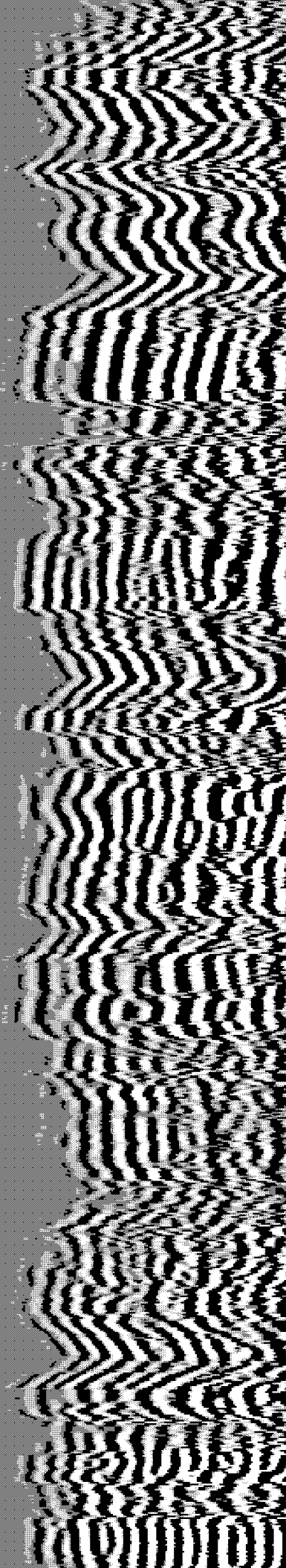
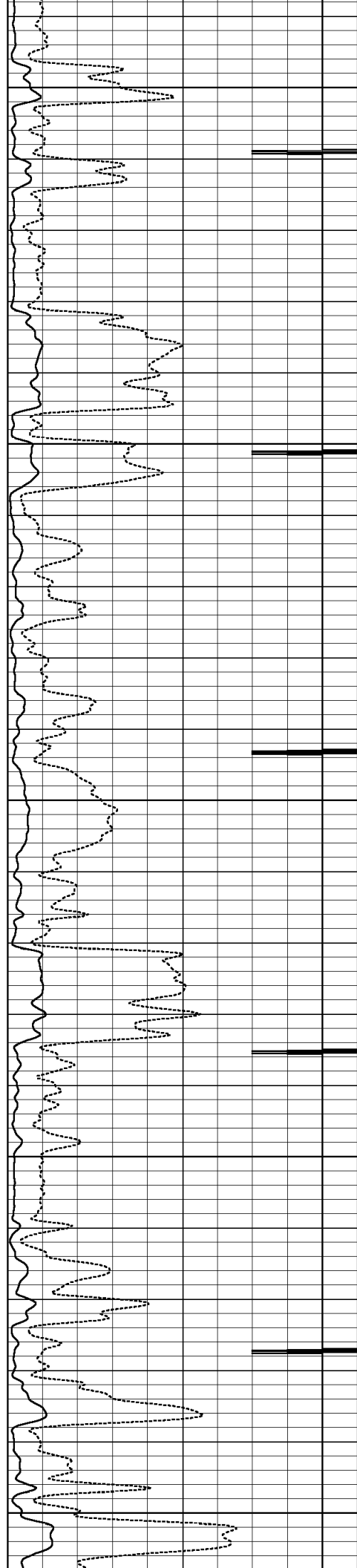
3700

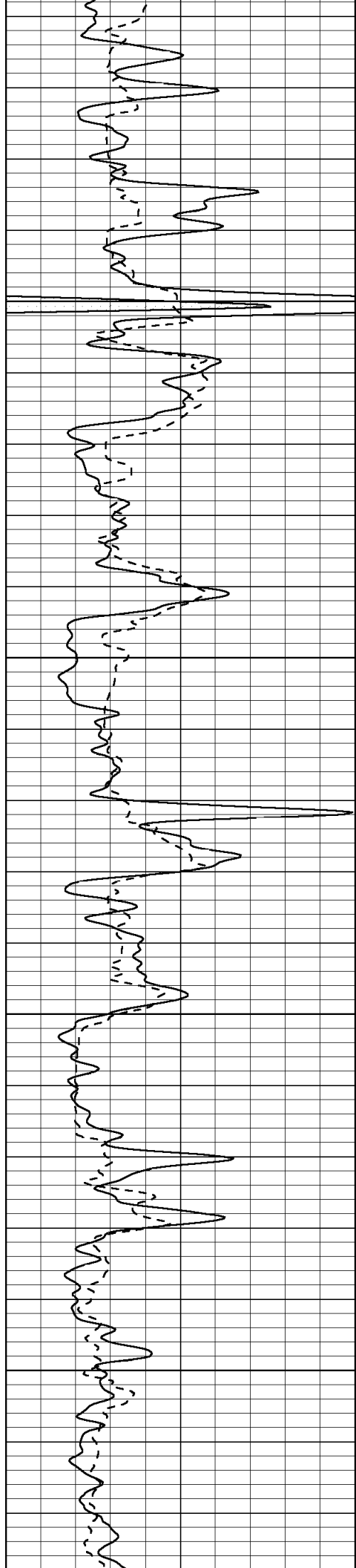
3750

3800

3850

3900



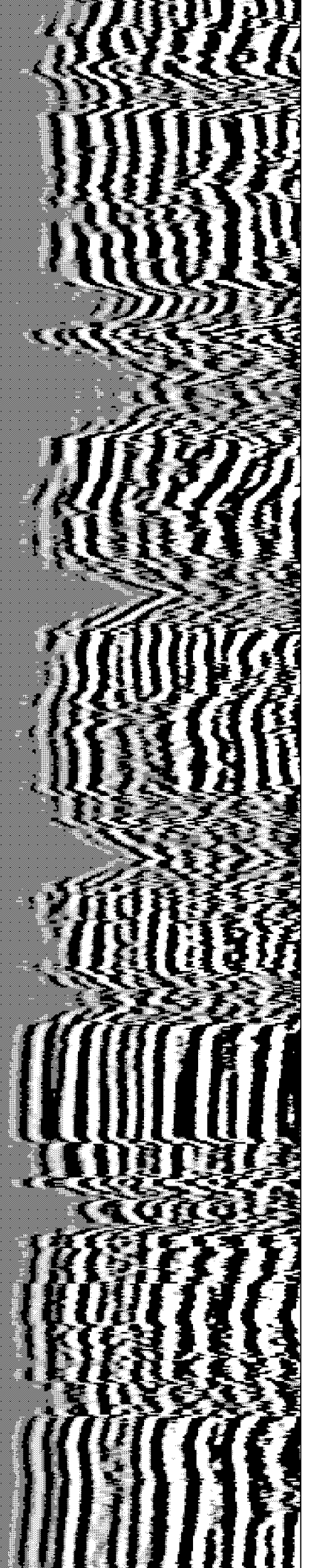
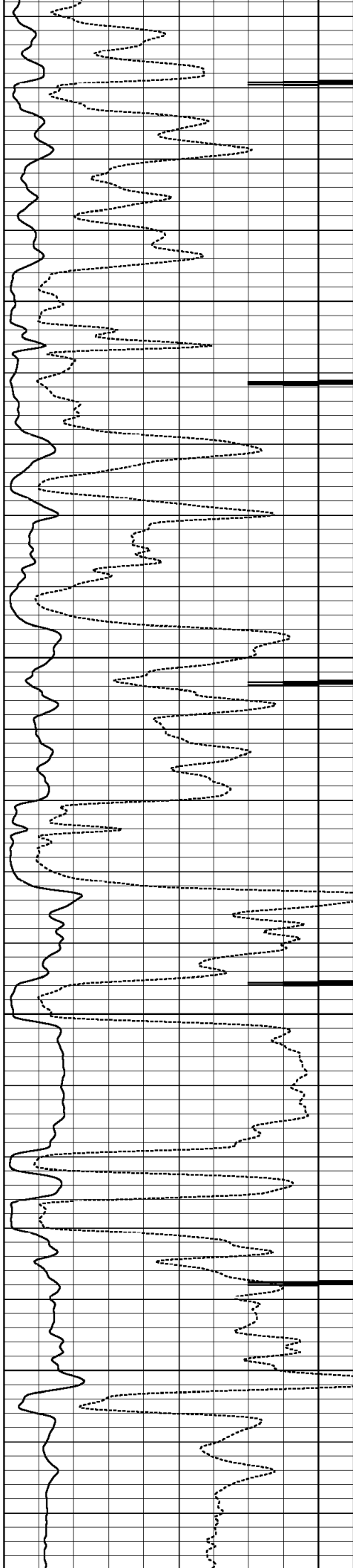


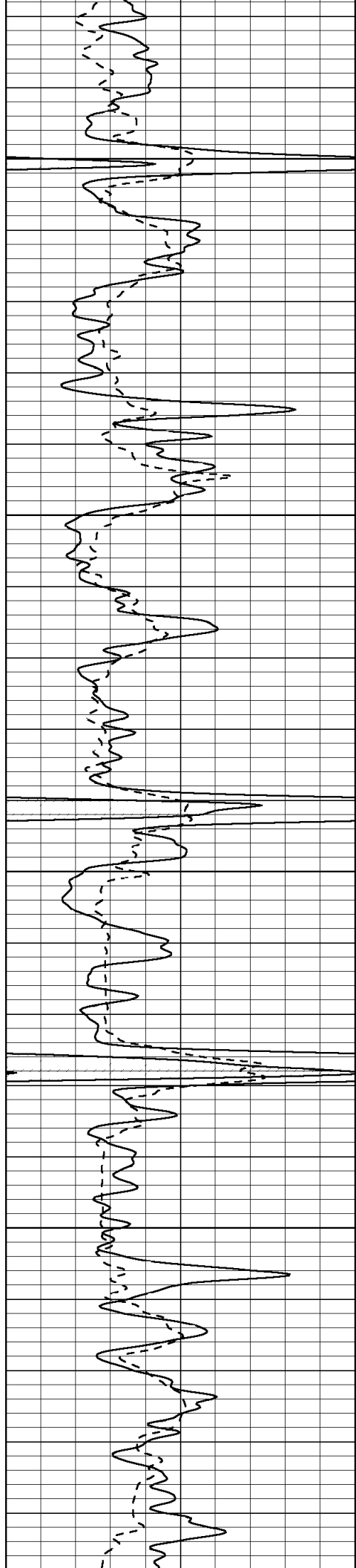
3950

4000

4050

4100



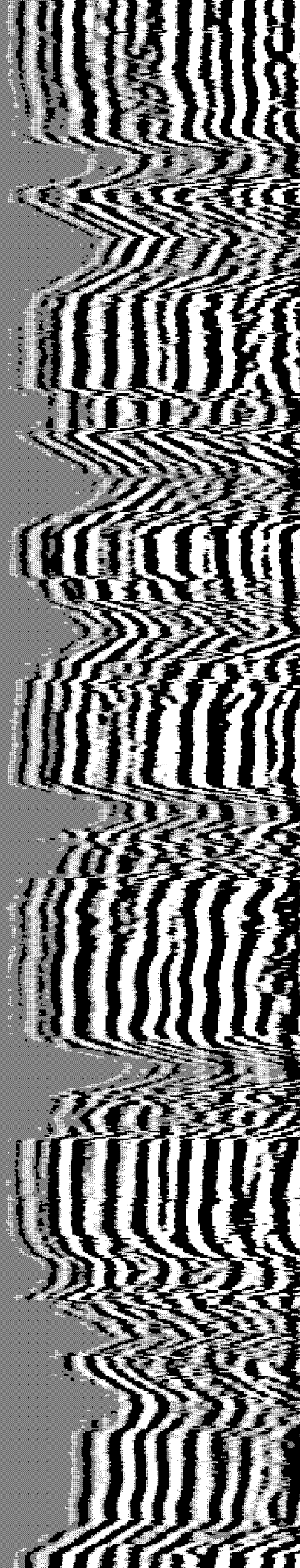
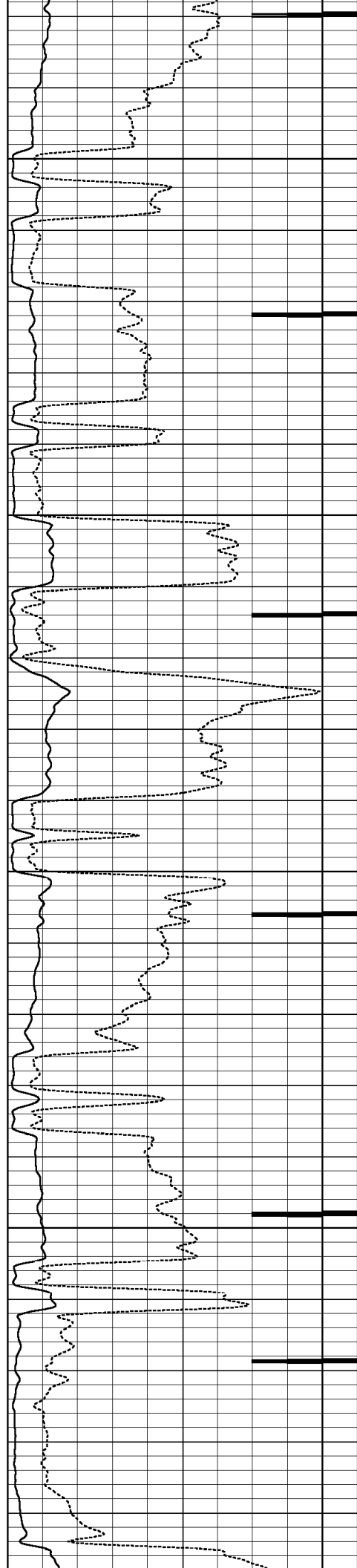


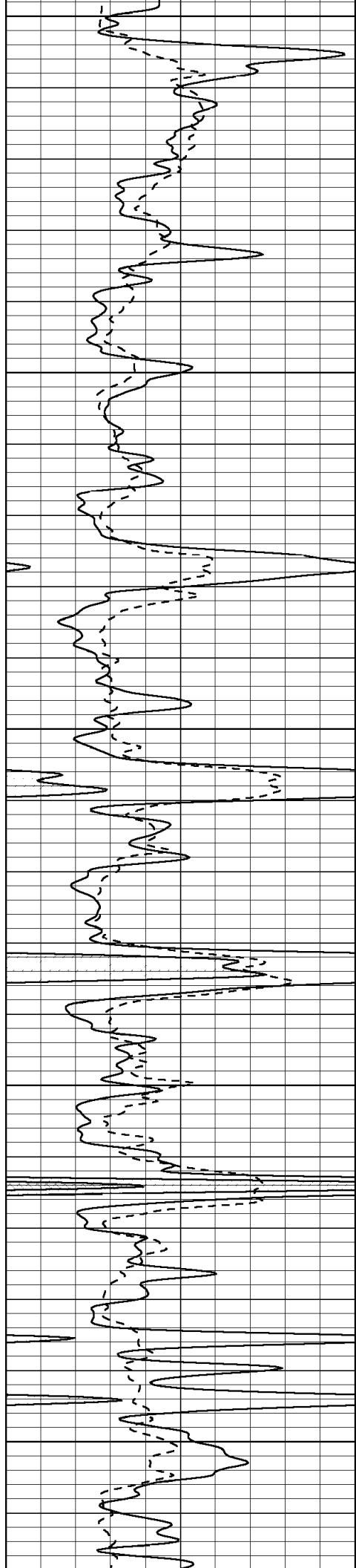
4150

4200

4250

4300





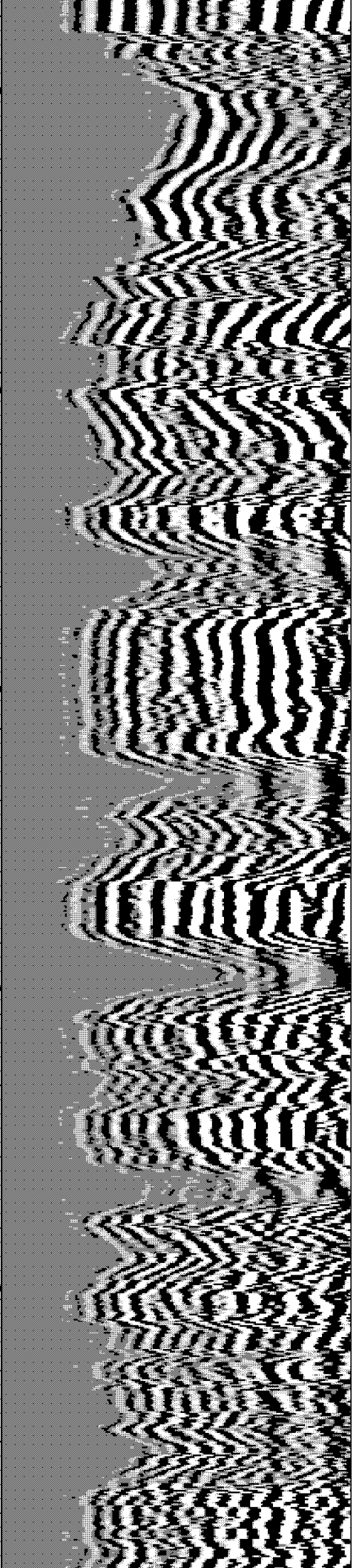
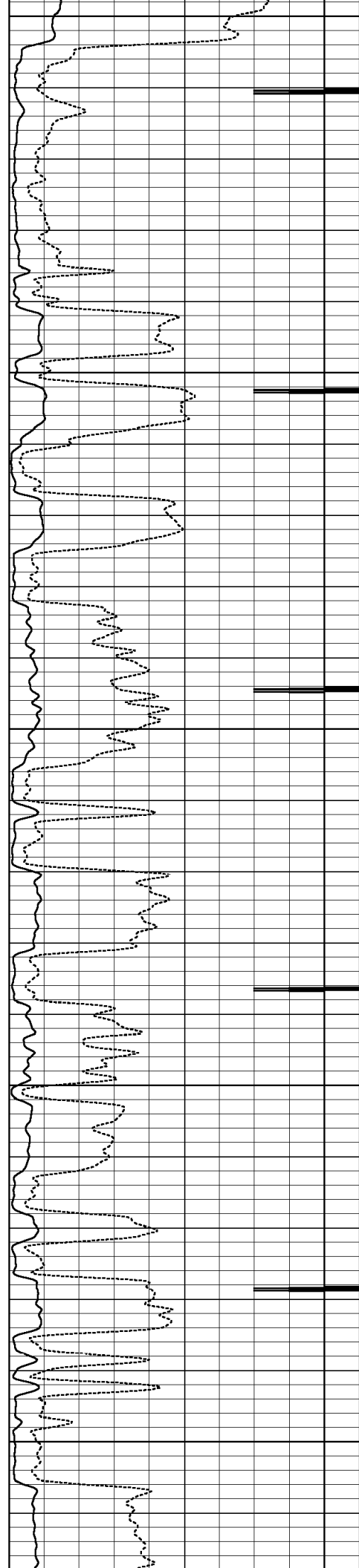
4350

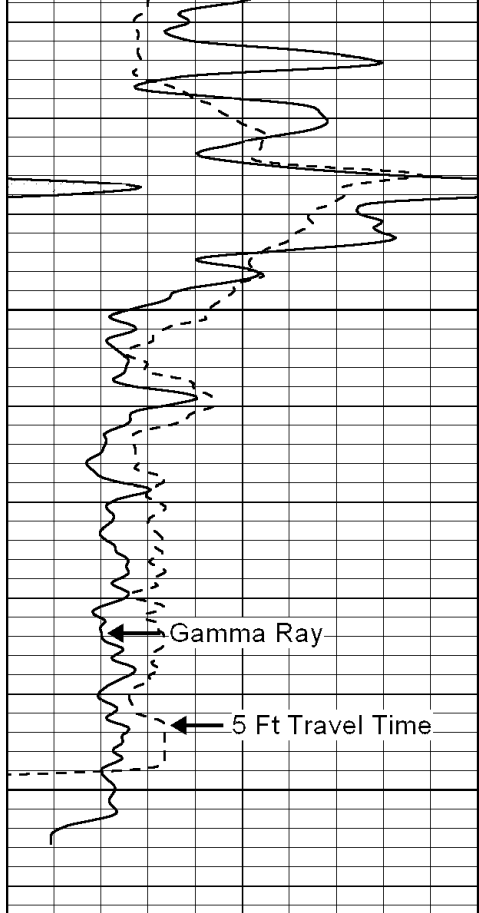
4400

4450

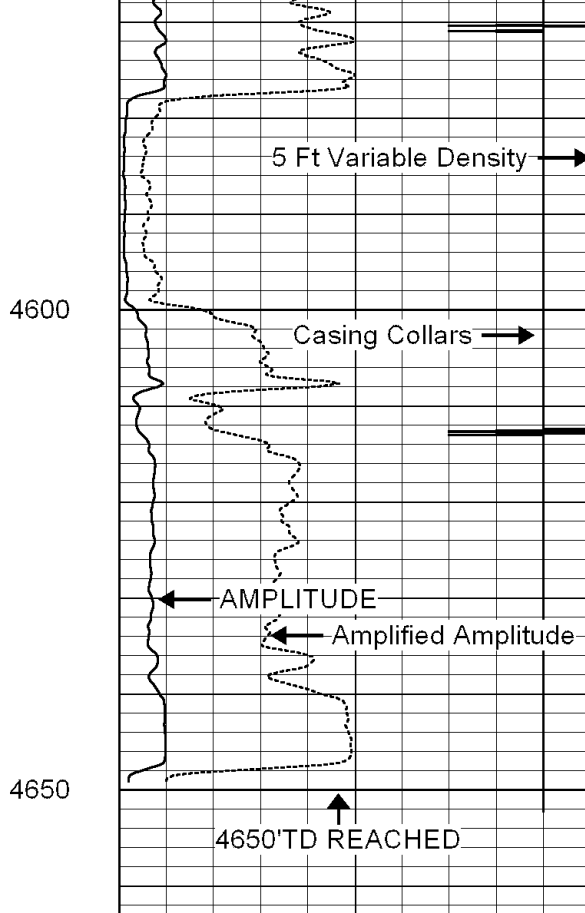
4500

4550

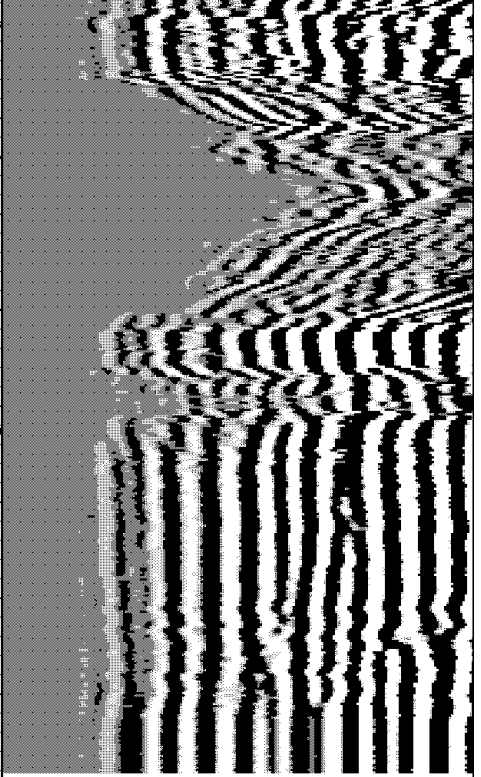




200	TT5 (usec)	1000
0	Gamma Ray (GAPI)	150



0	Amplified Amplitude (mV)	20
0	AMPLITUDE (mV)	100
9	Collar Locator	-1



200	Variable Density	1000
-----	------------------	------