



SUPERIOR
Hays,
Kansas

**COMPENSATED
DENSITY/NEUTRON
LOG**

Company RITCHIE EXPLORATION, INC.
Well W & E 21 AD UNIT #1
Field WILDCAT
County GOVE
State KANSAS

Company RITCHIE EXPLORATION, INC.
Well W & E 21 AD UNIT #1
Field WILDCAT
County GOVE State KANSAS

Location: API # : 15-063-21907-0000
2475' FSL & 1990' FEL
SEC 21 TWP 12S RGE 31W
Permanent Datum GROUND LEVEL Elevation 2888
Log Measured From KELLY BUSHING 10' A.G.L.
Drilling Measured From KELLY BUSHING
Other Services DIL
Elevation K.B. 2898
D.F. 2896
G.L. 2888

Date	5/5/11		
Run Number	ONE		
Depth Driller	4660		
Depth Logger	4661		
Bottom Logged Interval	4637		
Top Log Interval	3700		
Casing Driller	8 5/8" @ 219		
Casing Logger	NA		
Bit Size	7 7/8		
Type Fluid in Hole	CHEMICAL MUD	CHLORIDES 3400 PPM	
Density / Viscosity	9.3/58		
pH / Fluid Loss	10.0/8.8		
Source of Sample	FLOWLINE		
Rim @ Meas. Temp	1.3 @ 85F		
Rmf @ Meas. Temp	.97 @ 85F		
Rmc @ Meas. Temp	1.56 @ 85F		
Source of Rmf / Rmc	MEASURED		
Rim @ BHT	.90 @ 122F		
Time Circulation Stopped	2 HOURS		
Time Logger on Bottom			
Maximum Recorded Temperature	122F		
Equipment Number	680		
Location	HAYS, KS.		
Recorded By	JASON CAPPELLUCCI		
Witnessed By	TOM FUNK		

<<< Fold Here >>>

All interpretations are opinions based on inferences from electrical or other measurements and we cannot and do not guarantee the accuracy or correctness of any interpretation, and we shall not, except in the case of gross or willful negligence on our part, be liable or responsible for any loss, costs, damages, or expenses incurred or sustained by anyone resulting from any interpretation made by any of our officers, agents or employees. These interpretations are also subject to our general terms and conditions set out in our current Price Schedule.

Comments

THANK YOU FOR USING SUPERIOR WELL SERVICE (785) 628-6395
DIRECTIONS
I-70 TO OAKLEY EXIT 76 - 2 E. TO RD 14 - 8 S. - 1/2 E. TO GATE - S. INTO

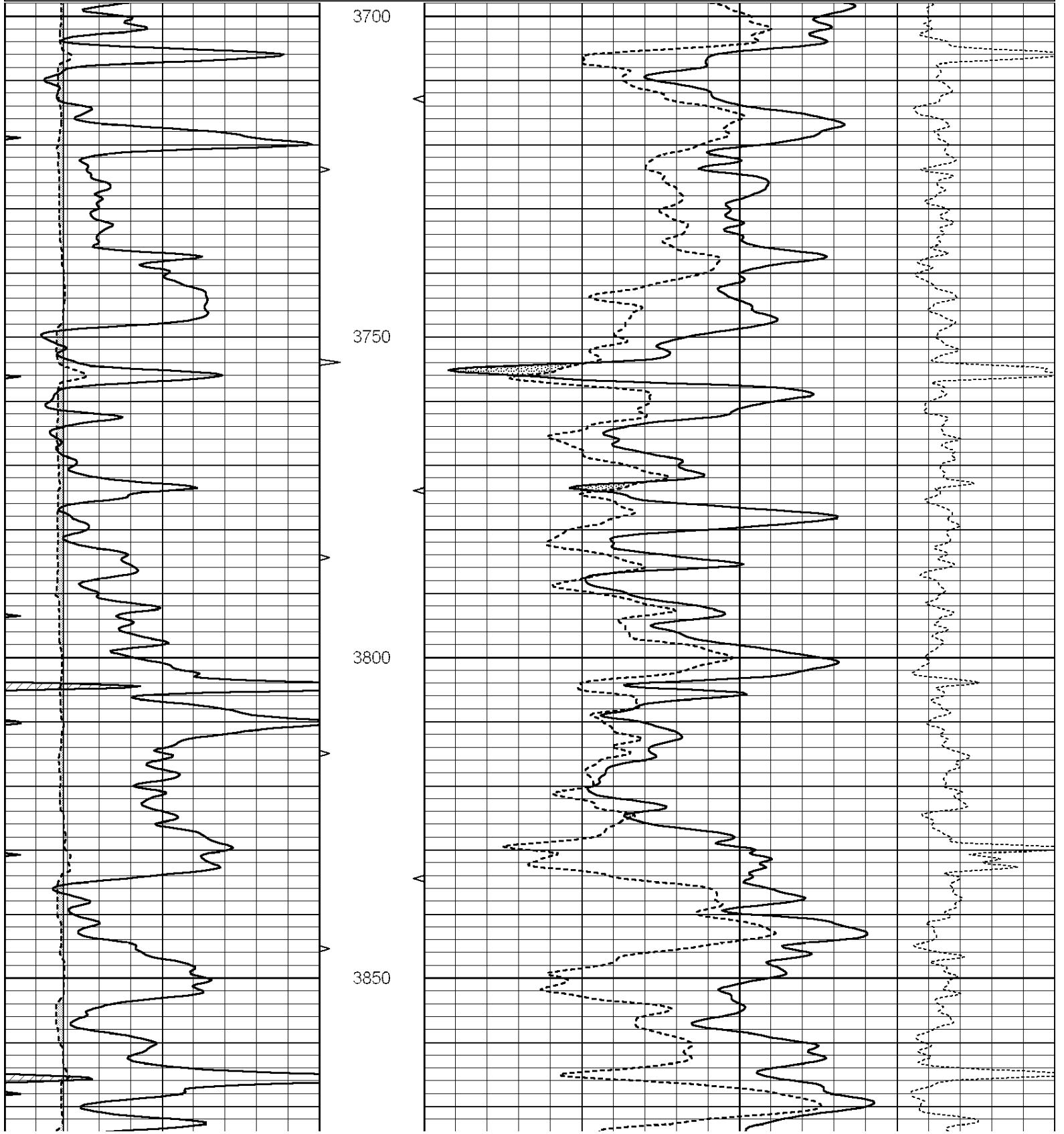


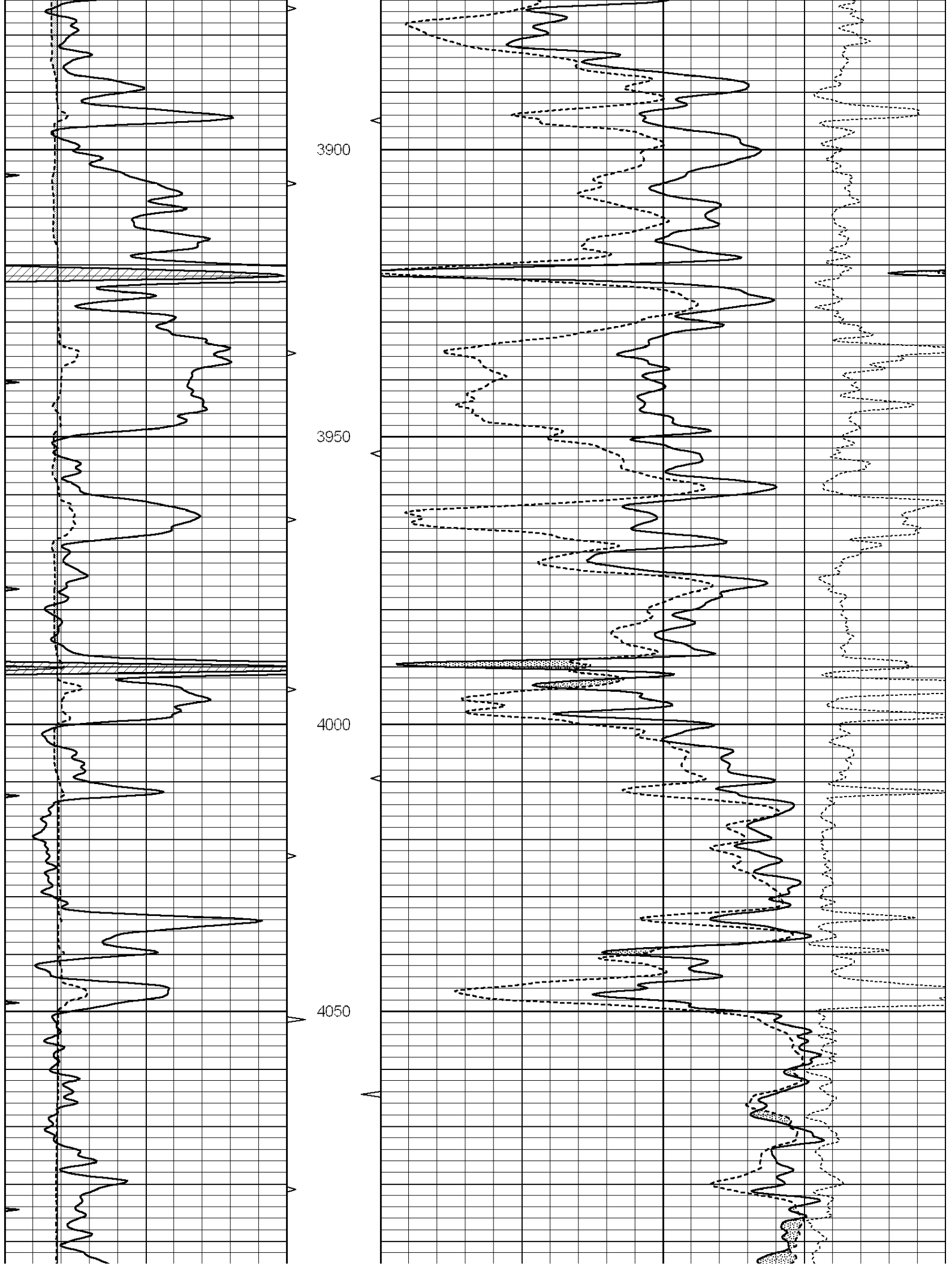
SUPERIOR
Hays,
Kansas

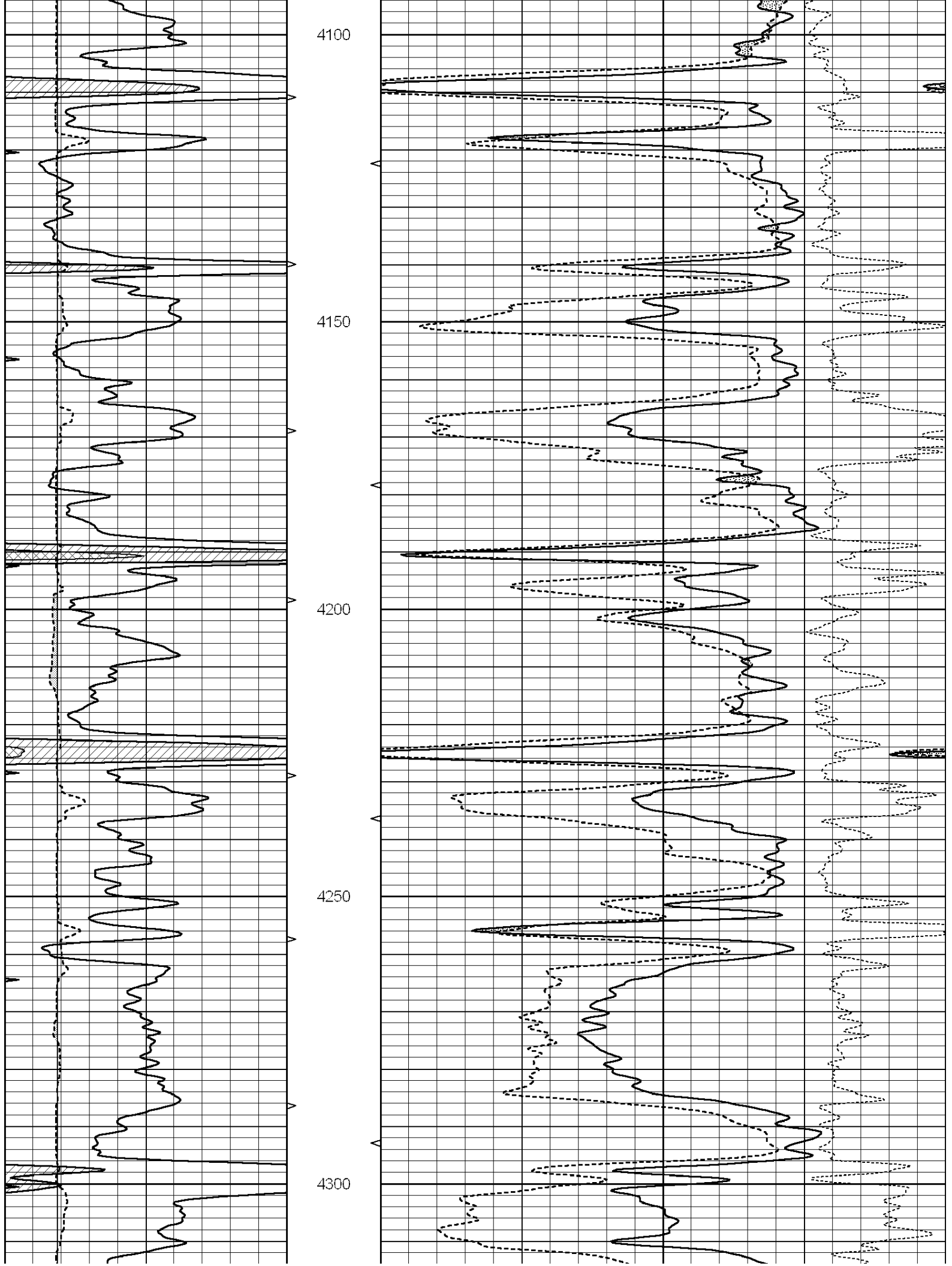
MAIN SECTION

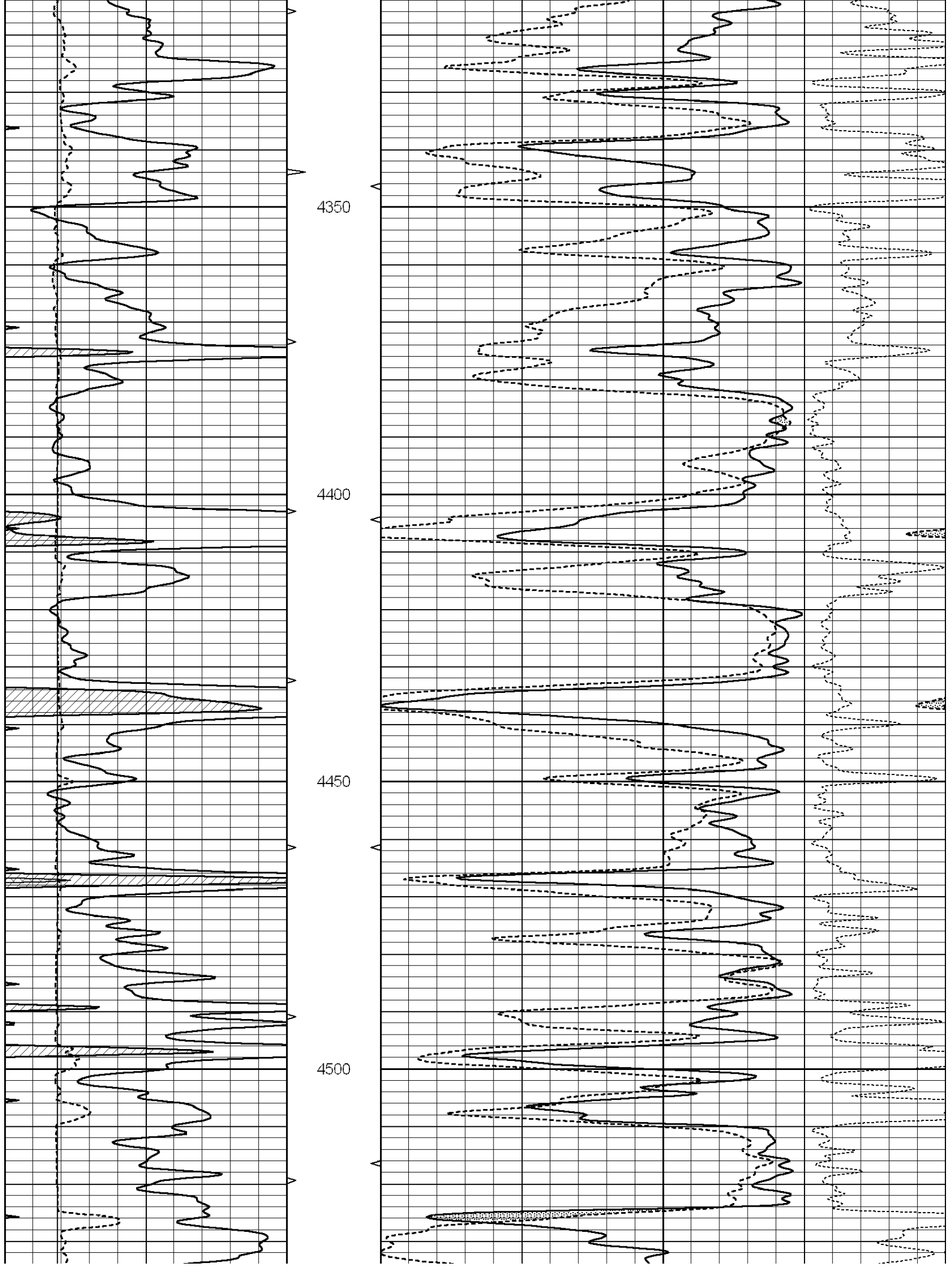
Database File: 007054ddn.db
 Dataset Pathname: pass3.1
 Presentation Format: _den_neu
 Dataset Creation: Thu May 05 22:14:40 2011 by Calc Open-Cased 090629
 Charted by: Depth in Feet scaled 1:240

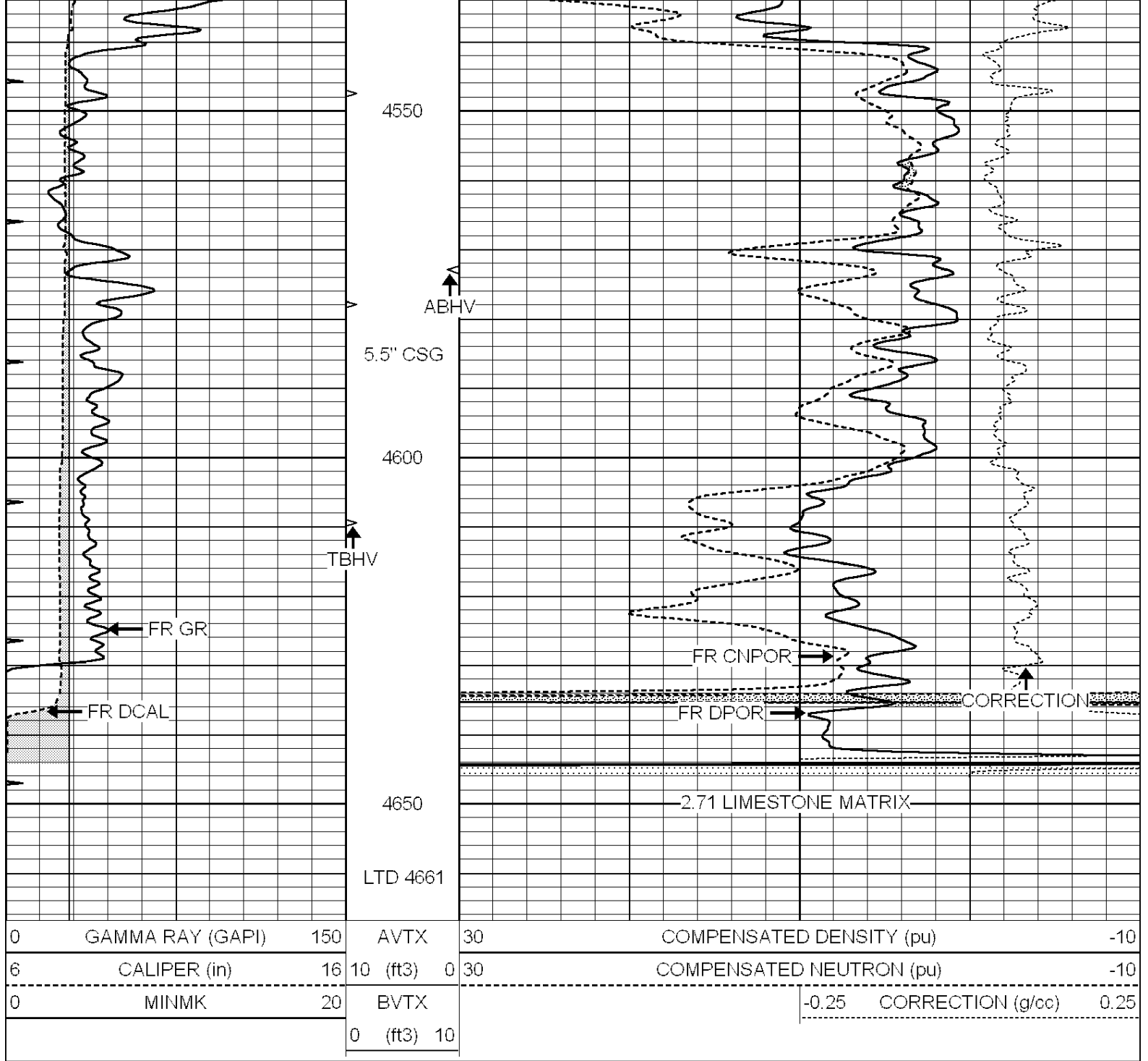
0	GAMMA RAY (GAPI)	150	AVTX	30	COMPENSATED DENSITY (pu)	-10
6	CALIPER (in)	16	10 (ft3)	0 30	COMPENSATED NEUTRON (pu)	-10
0	MINMK	20	BVTX		-0.25 CORRECTION (g/cc)	0.25
			0 (ft3)	10		













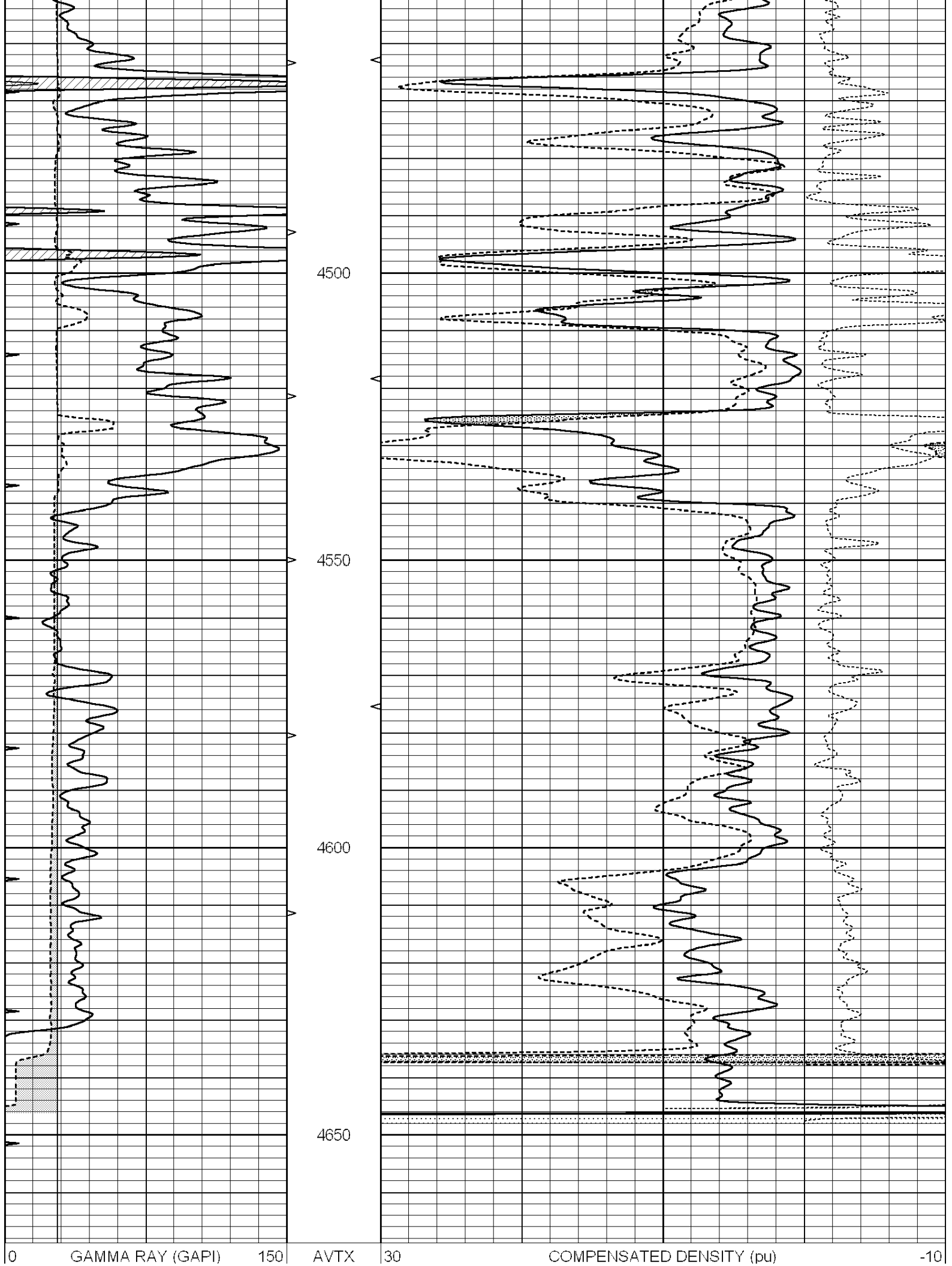
SUPERIOR
WELL SERVICES

**Hays,
Kansas**

REPEAT SECTION

Database File: 007054ddn.db
 Dataset Pathname: pass2.1
 Presentation Format: _den_neu
 Dataset Creation: Thu May 05 22:07:58 2011 by Calc Open-Cased 090629
 Charted by: Depth in Feet scaled 1:240

0	GAMMA RAY (GAPI)	150	AVTX	30	COMPENSATED DENSITY (pu)	-10
6	CALIPER (in)	16	10 (ft3)	0 30	COMPENSATED NEUTRON (pu)	-10
0	MINMK	20	BVTX		-0.25 CORRECTION (g/cc)	0.25
			0 (ft3)	10		



6	CALIPER (in)	16	10 (ft3)	0	30	COMPENSATED NEUTRON (pu)		-10
0	MINMK	20	BVTX			-0.25	CORRECTION (g/cc)	0.25
			0 (ft3)	10				

Calibration Report

Database File: 007054ddn.db
Dataset Pathname: pass3.1
Dataset Creation: Thu May 05 22:14:40 2011 by Calc Open-Cased 090629

Dual Induction Calibration Report

Serial-Model: PROBE7-DILG
Surface Cal Performed: Wed Jul 30 06:14:24 2008
Downhole Cal Performed: Mon Jul 28 12:02:56 2008
After Survey Verification Performed: Mon Jul 28 12:02:56 2008

Surface Calibration

		Readings			References			Results	
Loop:	Air	Loop		Air	Loop		m	b	
Deep	-0.014	0.629	V	0.000	400.000	mmho/m	621.923	8.759	
Medium	0.039	0.728	V	0.000	464.000	mmho/m	673.322	-26.058	
Internal:	Zero	Cal		Zero	Cal		m	b	
Deep	0.011	0.610	V	0.000	400.000	mmho/m	667.135	-7.256	
Medium	0.005	0.712	V	0.000	464.000	mmho/m	655.677	-3.102	

Downhole Calibration

		Readings			References			Results	
	Zero	Cal		Zero	Cal		m'	b'	
Deep	0.000	0.000	mmho/m	14.508	388.384	mmho/m	1.000	0.000	
Medium	0.000	0.000	mmho/m	166.367	504.400	mmho/m	1.000	0.000	
LL3		7.500	V		1400.000	Ohm-m			
		0.000	V		20.000	Ohm-m			
		-7.200	V		4000.000	mmho-m			

After Survey Verification

		Readings			Targets			Results	
	Zero	Cal		Zero	Cal		m'	b'	
Deep	0.000	0.000	mmho/m	0.000	0.000	mmho/m	0.000	0.000	
Medium	0.000	0.000	mmho/m	0.000	0.000	mmho/m	0.000	0.000	
LL3		1.000	Ohm-m		1.000	Ohm-m			
		0.000	Ohm-m		0.000	Ohm-m			
		1.000	mmho-m		1.000	mmho-m			

Compensated Density Calibration Report

Serial-Model: GEAR4-GEARHART
Source / Verifier: 143 / 143
Master Calibration Performed: Wed Jan 26 17:58:17 2011

Master Calibration

	Density		Far Detector	Near Detector	
Magnesium	1.710	g/cc	1015.91	497.51	cps
Aluminum	2.600	g/cc	227.67	350.20	cps
Spine Angle = 76.79			Density/Spine Ratio = 0.579		

	Size		Reading	
Small Ring	8.00	in	2.50	V
Large Ring	14.00	in	4.70	V

Compensated Neutron Calibration Report

Serial Number:	6I
Tool Model:	G

CALIBRATION						
Detector	Readings		Target		Normalization	
Short Space	1.00	cps	1.00	cps	1.0000	
Long Space	1.00	cps	1.00	cps	1.0000	

Gamma Ray Calibration Report

Serial Number:	#8	
Tool Model:	OPEN	
Performed:	Sun Apr 10 22:50:36 2011	
Calibrator Value:	150.0	GAPI
Background Reading:	0.0	cps
Calibrator Reading:	175.0	cps
Sensitivity:	0.8971	GAPI/cps