



DIGITAL LOG (785) 625-3858

Dual Induction Log

API No. 15-163-23,695-00-00

Company: Murfin Drilling Company, Inc.  
 Well: Hilgers No.4-19  
 Field: Mayhew  
 County: Rooks State: Kansas

Location: 800' FNL & 1450' FWL

Sec: 19 Twp: 9S Rge: 18W

Other Services: CNL/CDL MEL/BHCS

Permanent Datum	Ground Level	Elevation 2152	K.B. 2157
Log Measured From	Kelly Bushing	5 Ft. Above Perm. Datum	D.F. 2152
Drilling Measured From	Kelly Bushing		G.L. 2152
Date	7/15/2011		
Run Number	One		
Depth Driller	3670		
Depth Logger	3670		
Bottom Logged Interval	3669		
Top Log Interval	0		
Casing Driller	8.625 @ 218		
Casing Logger	219		
Bit Size	7.875		
Type Fluid in Hole	Chemical		
Salinity, ppm CL	5.000		
Density / Viscosity	9.4   57		
pH / Fluid Loss	10.0   8.0		
Source of Sample	Flowline		
Rm @ Meas. Temp	.65 @ 88		
Rmf @ Meas. Temp	.49 @ 88		
Rmc @ Meas. Temp	.88 @ 88		
Source of Rmf / Rmc	Charts		
Rm @ BHT	.51 @ 113		
Operating Rig Time	4 Hours		
Max Rec. Temp. F	113		
Equipment Number	15		
Location	Hays		
Recorded By	C. Desaire		
Witnessed By	Jeff Christian		

<<< Fold Here >>>

All interpretations are opinions based on inferences from electrical or other measurements and we cannot and do not guarantee the accuracy or correctness of any interpretation, and we shall not, except in the case of gross or willful negligence on our part, be liable or responsible for any loss, costs, damages, or expenses incurred or sustained by anyone resulting from any interpretation made by any of our officers, agents or employees. These interpretations are also subject to our general terms and conditions set out in our current Price Schedule.

Comments

Thank you for using Log-Tech, Inc.  
 (785) 625-3858

Plainville, 4 1/2 W to 13 Rd,  
 2 N, E & SE Into

Database File: c:\warrior\data\murfin\_hilgers #4-19\murfinhd.db  
 Dataset Pathname: dil/murfstk  
 Presentation Format: dil2in  
 Dataset Creation: Fri Jul 15 16:29:57 2011  
 Charted by: Depth in Feet scaled 1:600

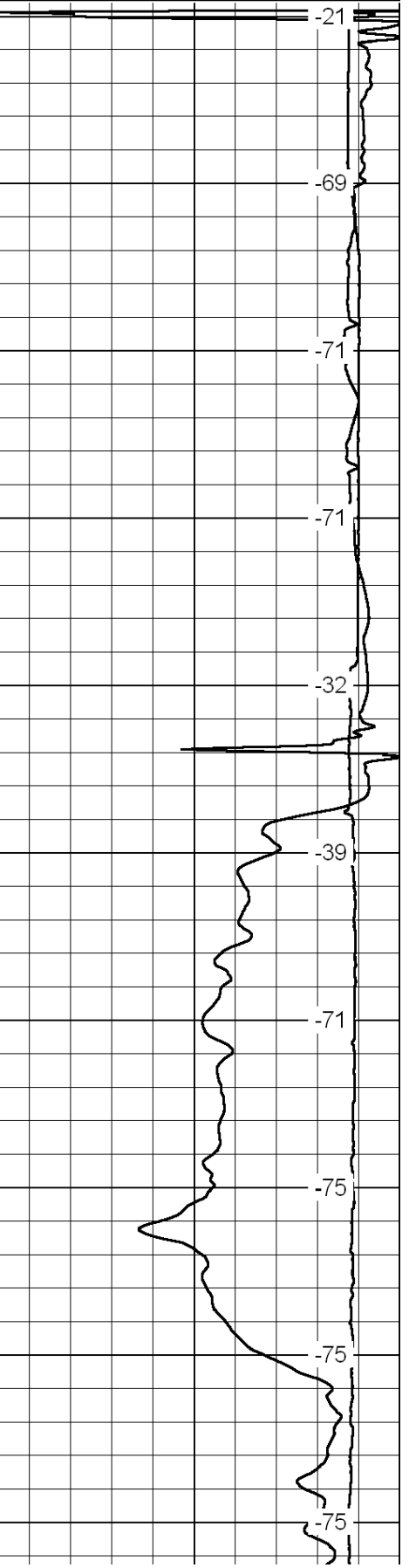
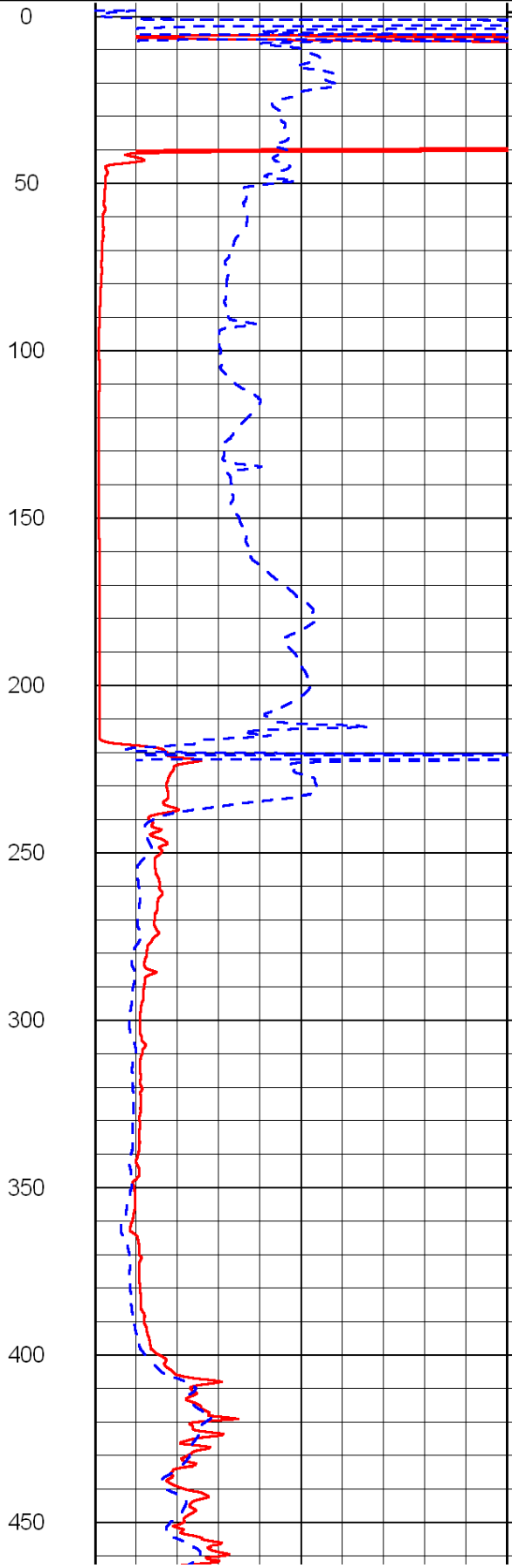
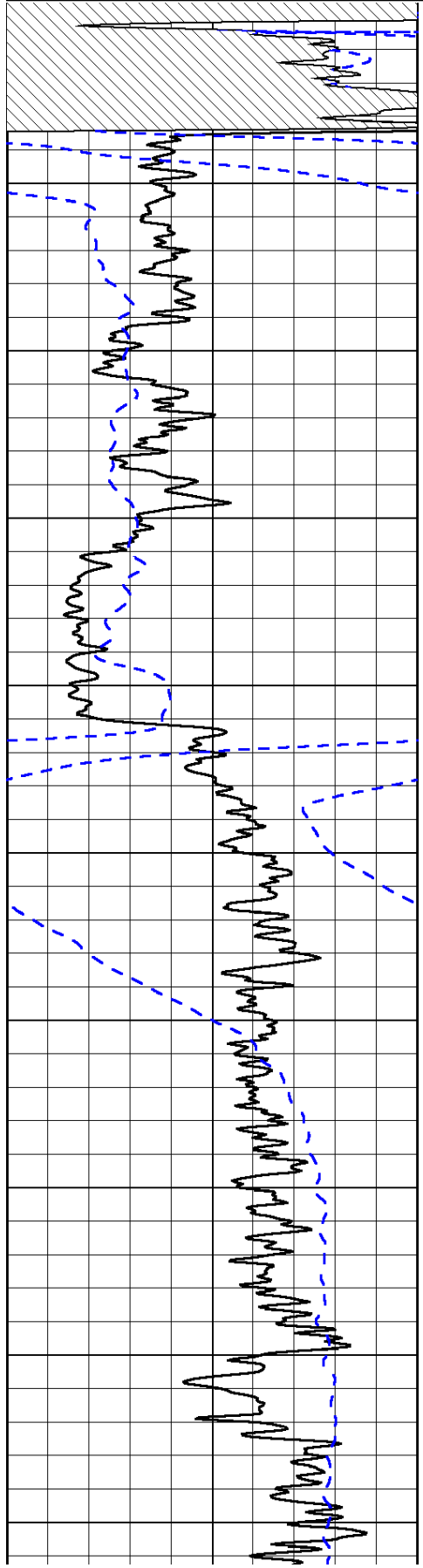
0	Gamma Ray	150
-200	SP (mV)	0

0	Shallow Resistivity	50
0	Deep Resistivity	50

LSPD

1000	Conductivity	0
15000	Line Tension	0

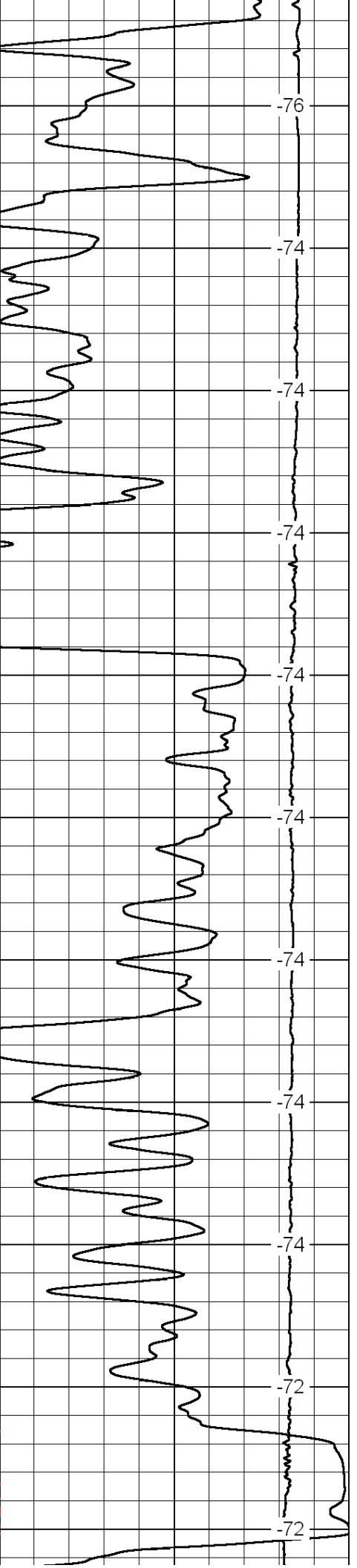
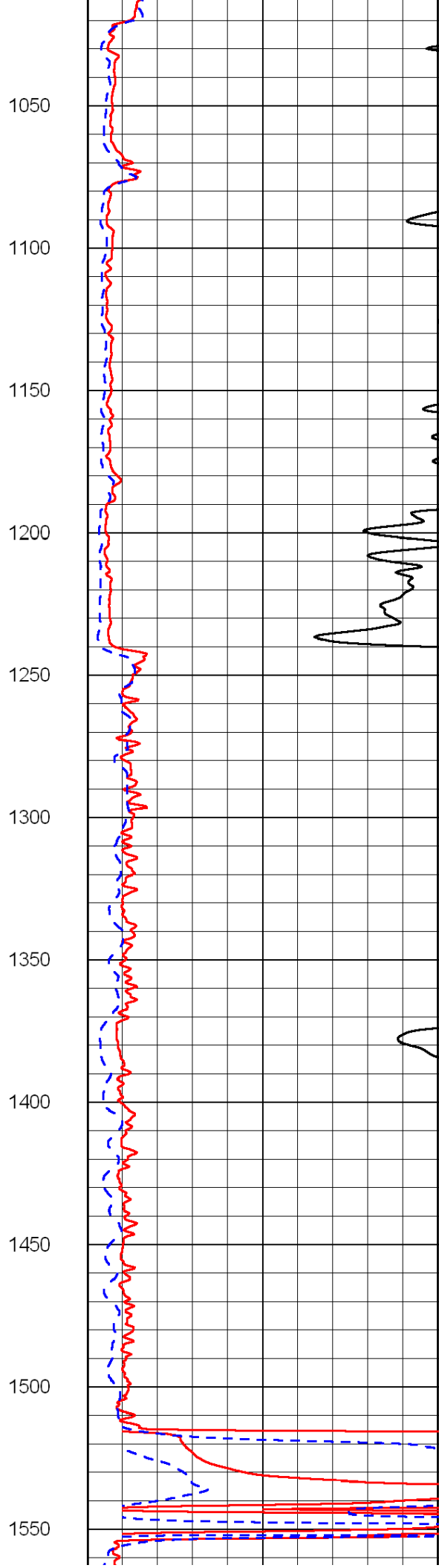
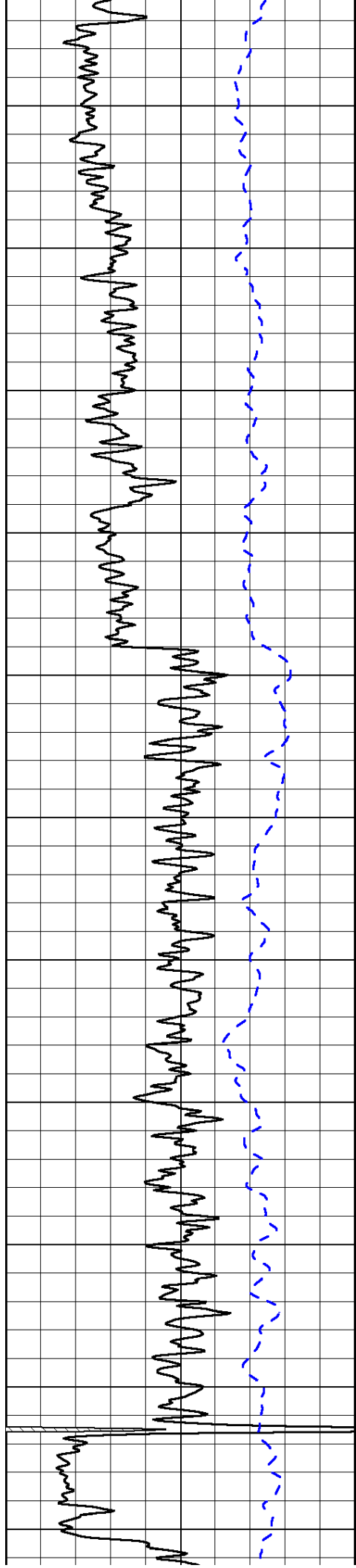
50	Shallow Resistivity	500
50	Deep Resistivity	500

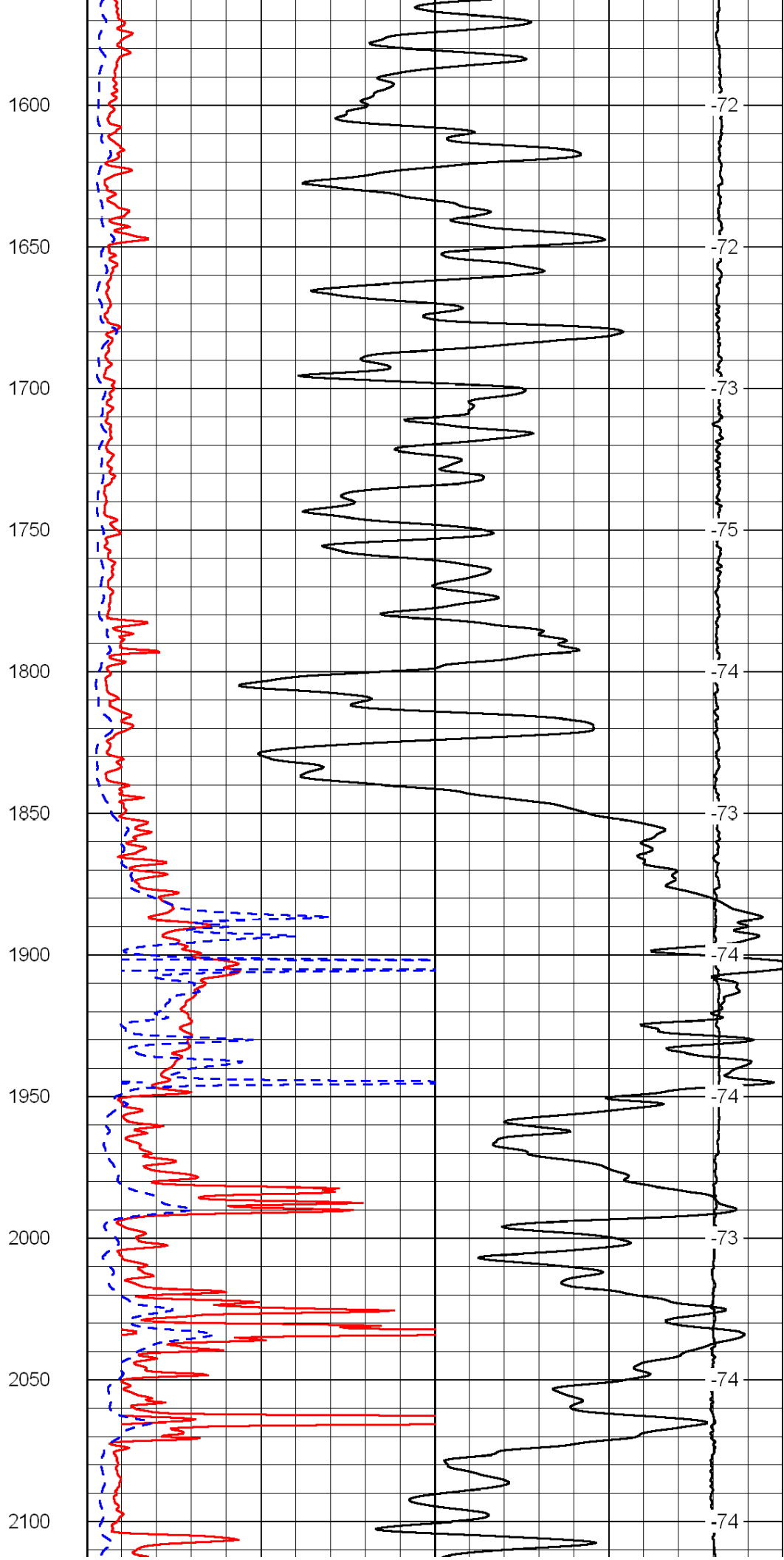
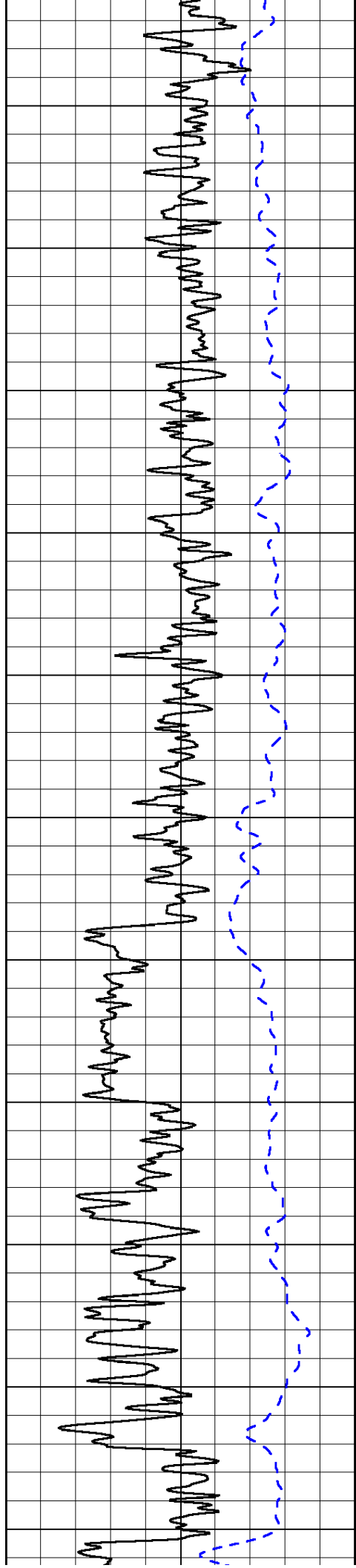


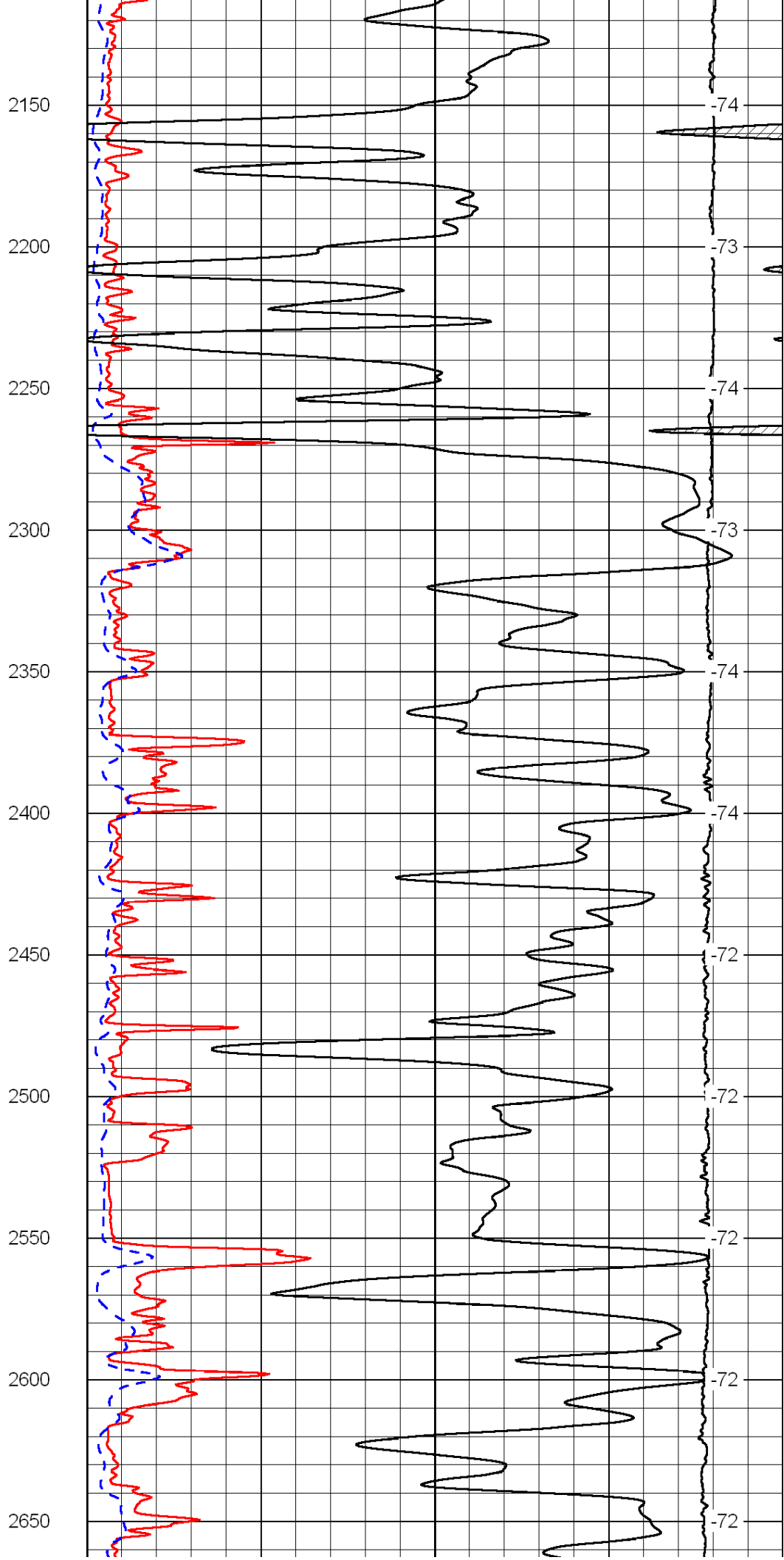
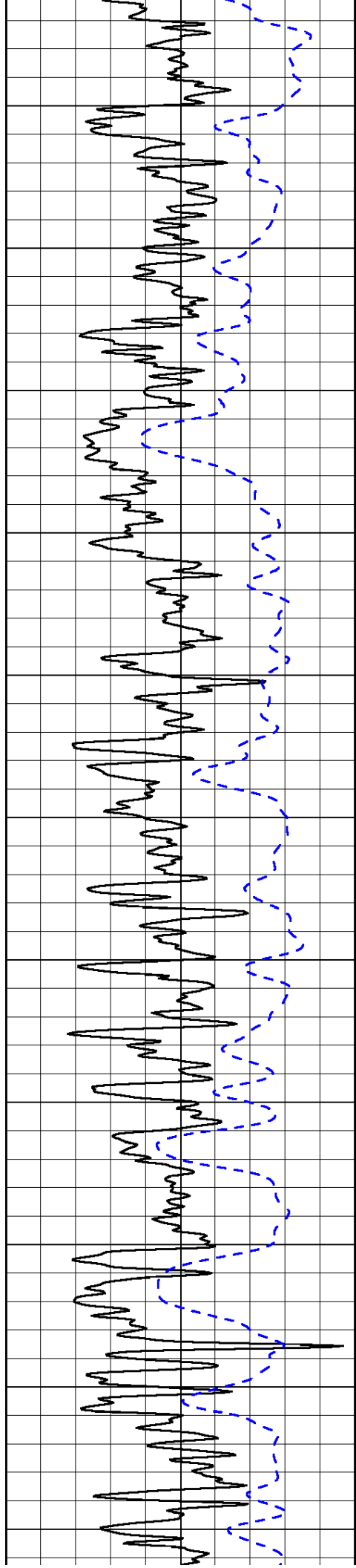
0  
50  
100  
150  
200  
250  
300  
350  
400  
450

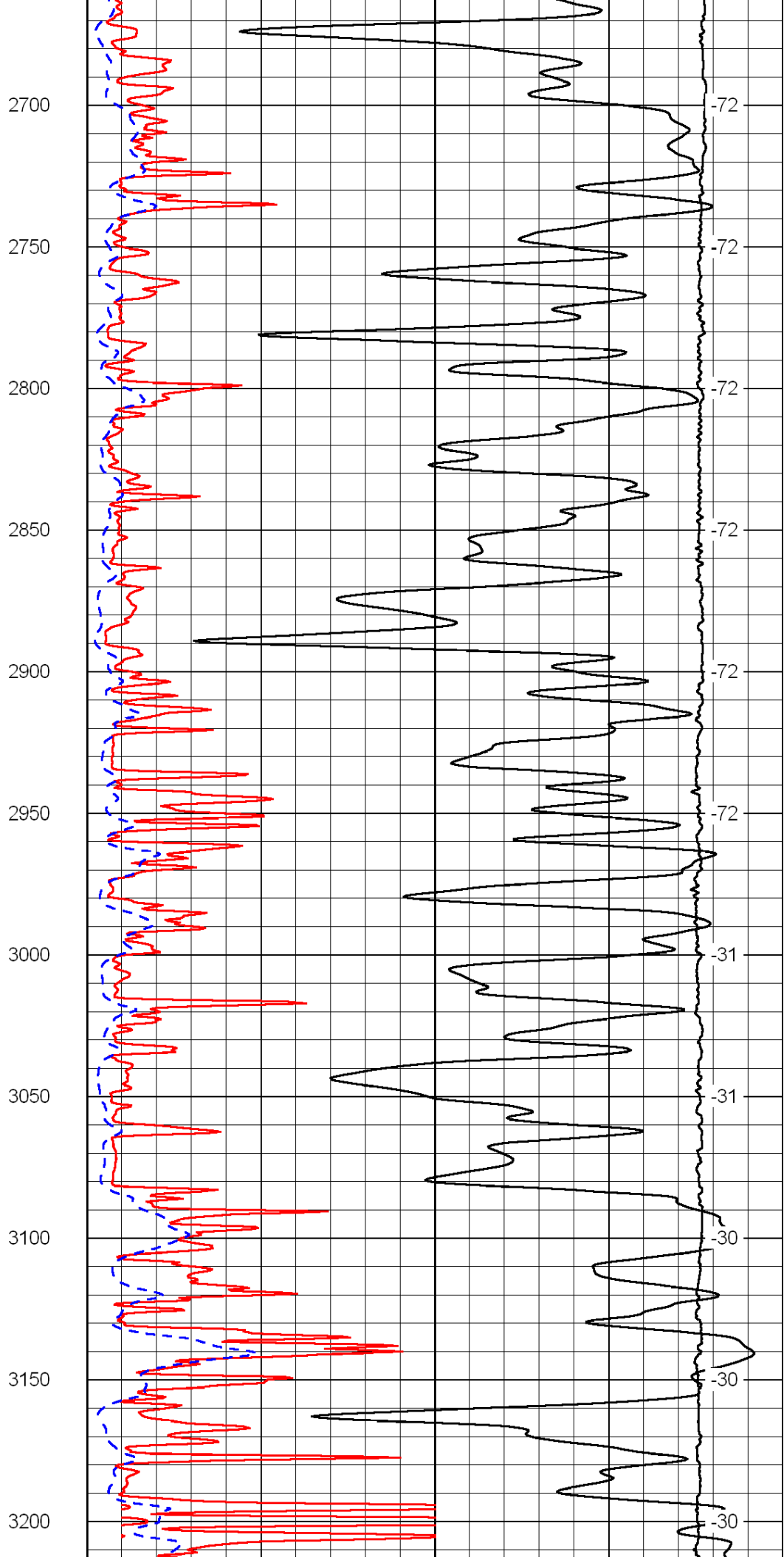
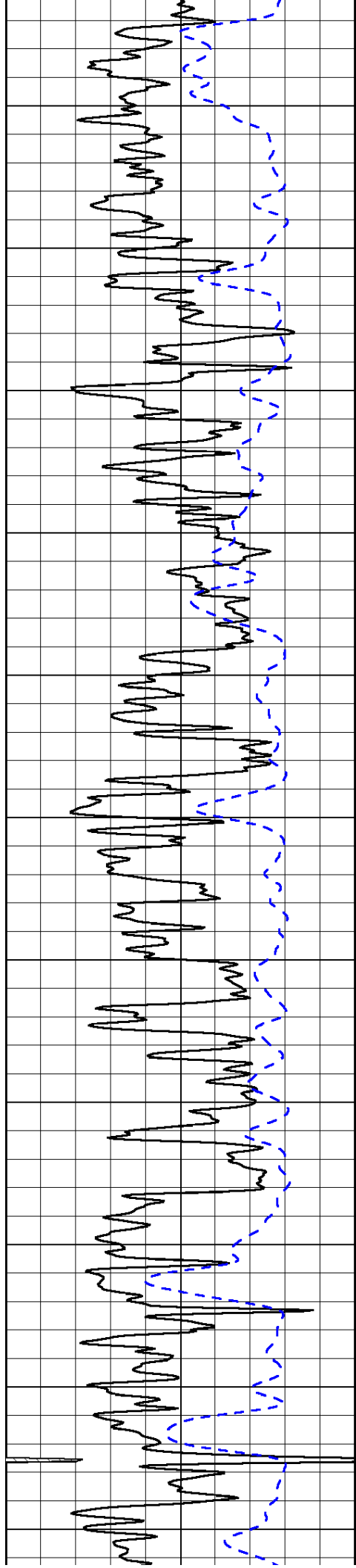
-21  
-69  
-71  
-71  
-32  
-39  
-71  
-75  
-75  
-75

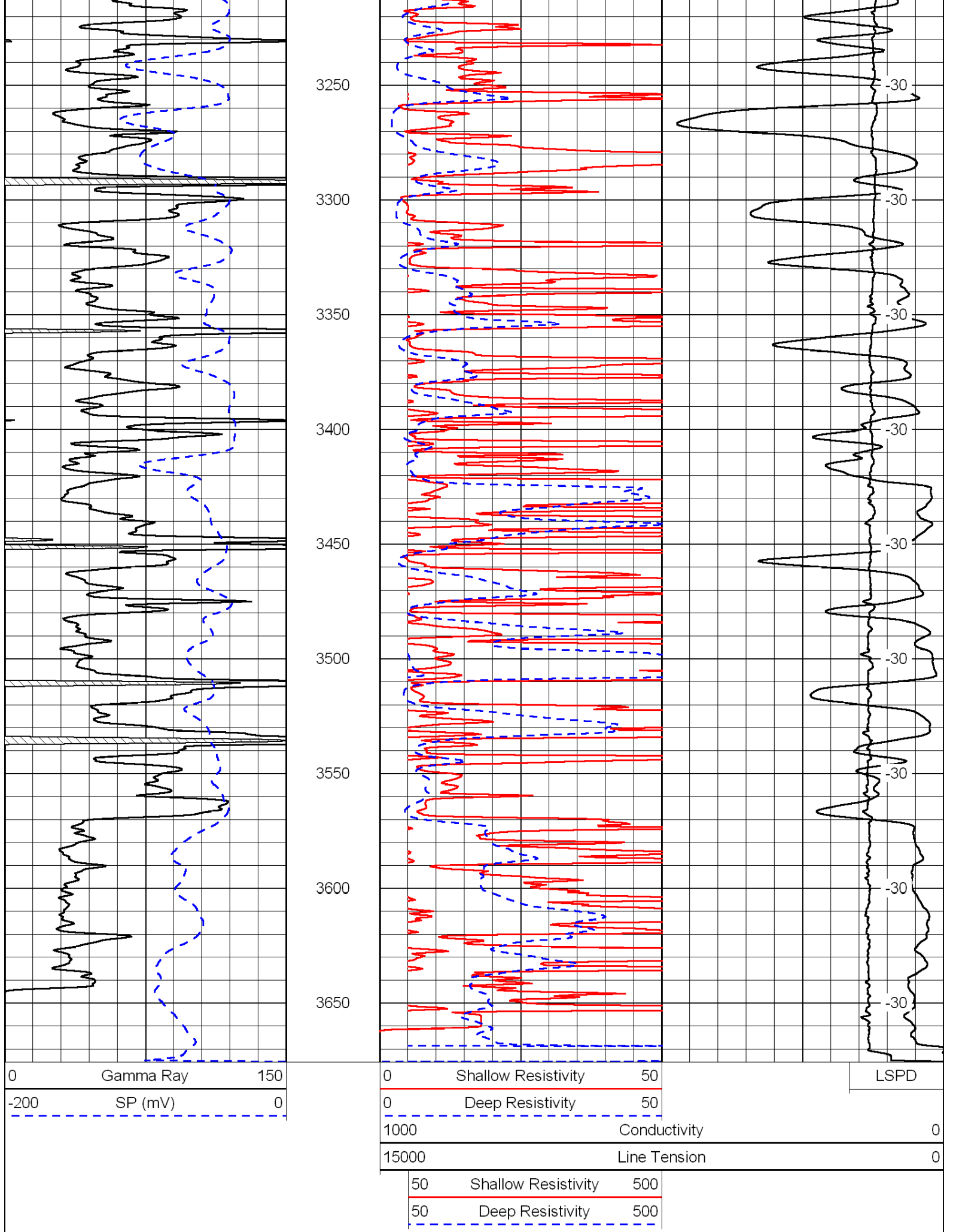












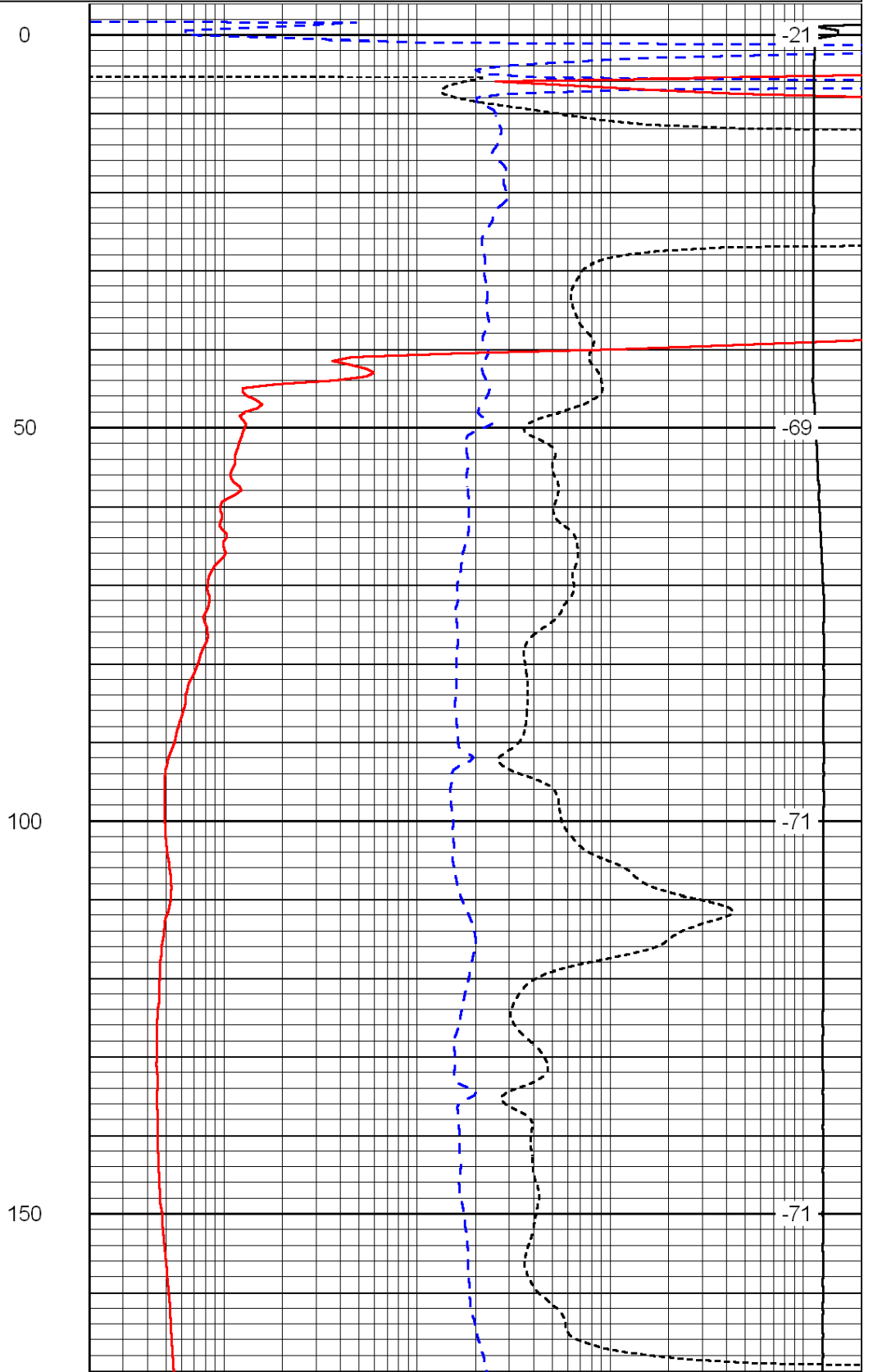
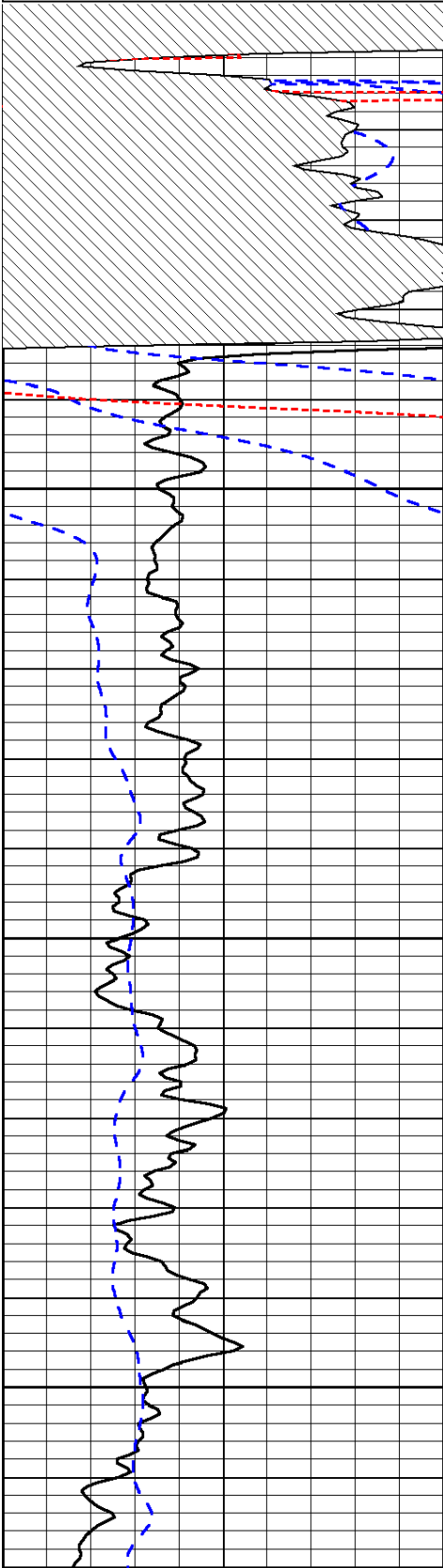


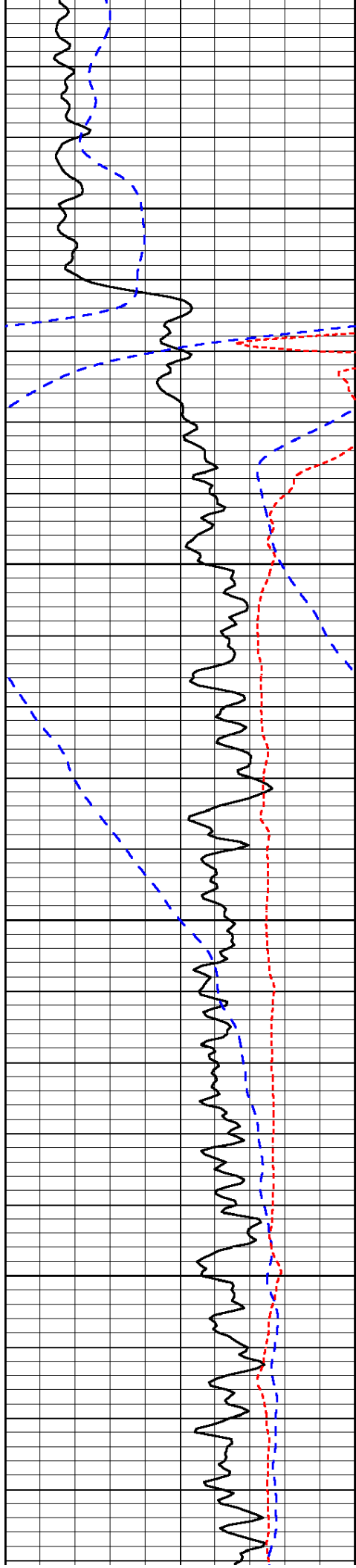
Database File: c:\warrior\data\murfin\_hilgers #4-19\murfinhd.db  
 Dataset Pathname: dil/murfstk  
 Presentation Format: dil  
 Dataset Creation: Fri Jul 15 16:29:57 2011  
 Charted by: Depth in Feet scaled 1:240

0	Gamma Ray	150
-200	SP (mV)	0
-160	Rxo / Rt	40

0.2	Deep Resistivity	2000
0.2	Medium Resistivity	2000
0.2	Shallow Resistivity	2000
15000	Line Tension	0

LSPD



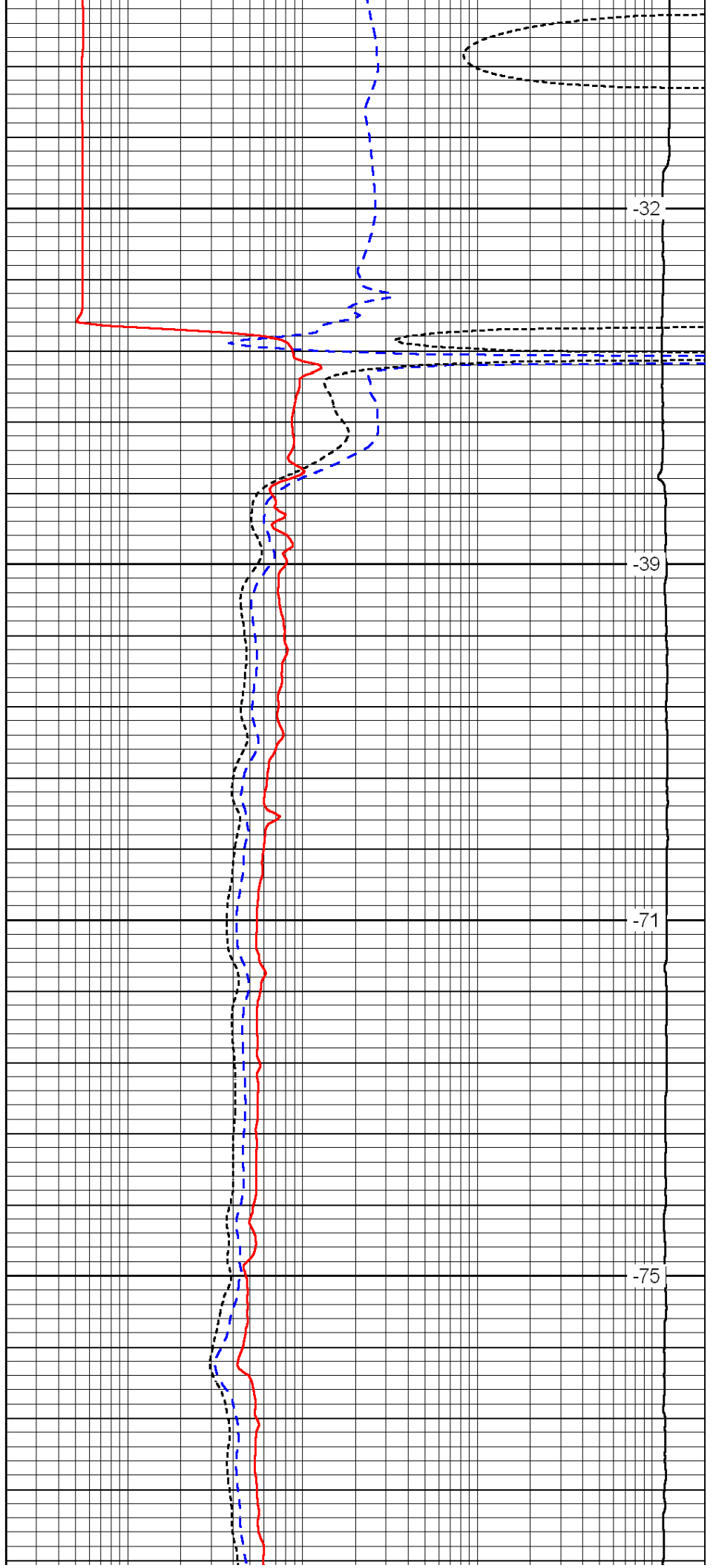


200

250

300

350

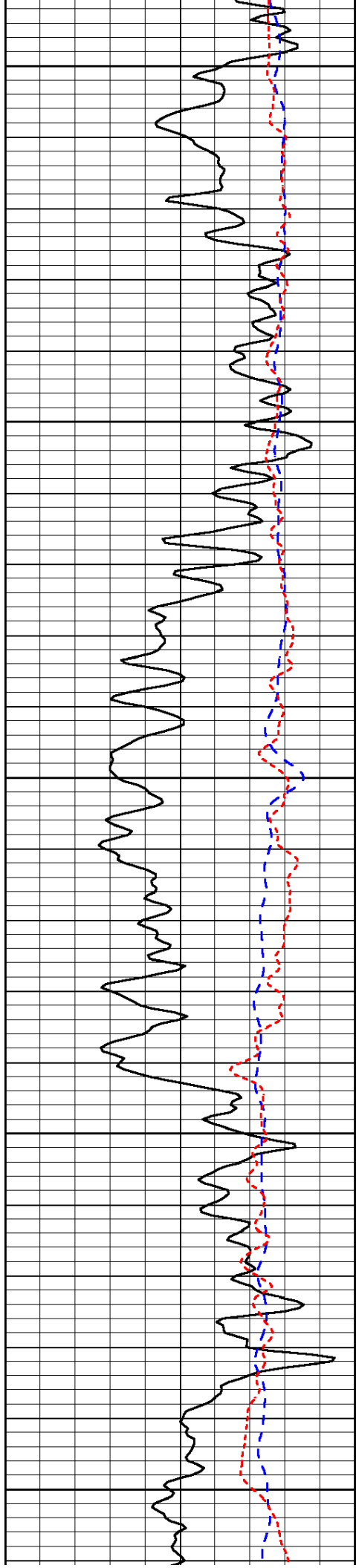


-32

-39

-71

-75



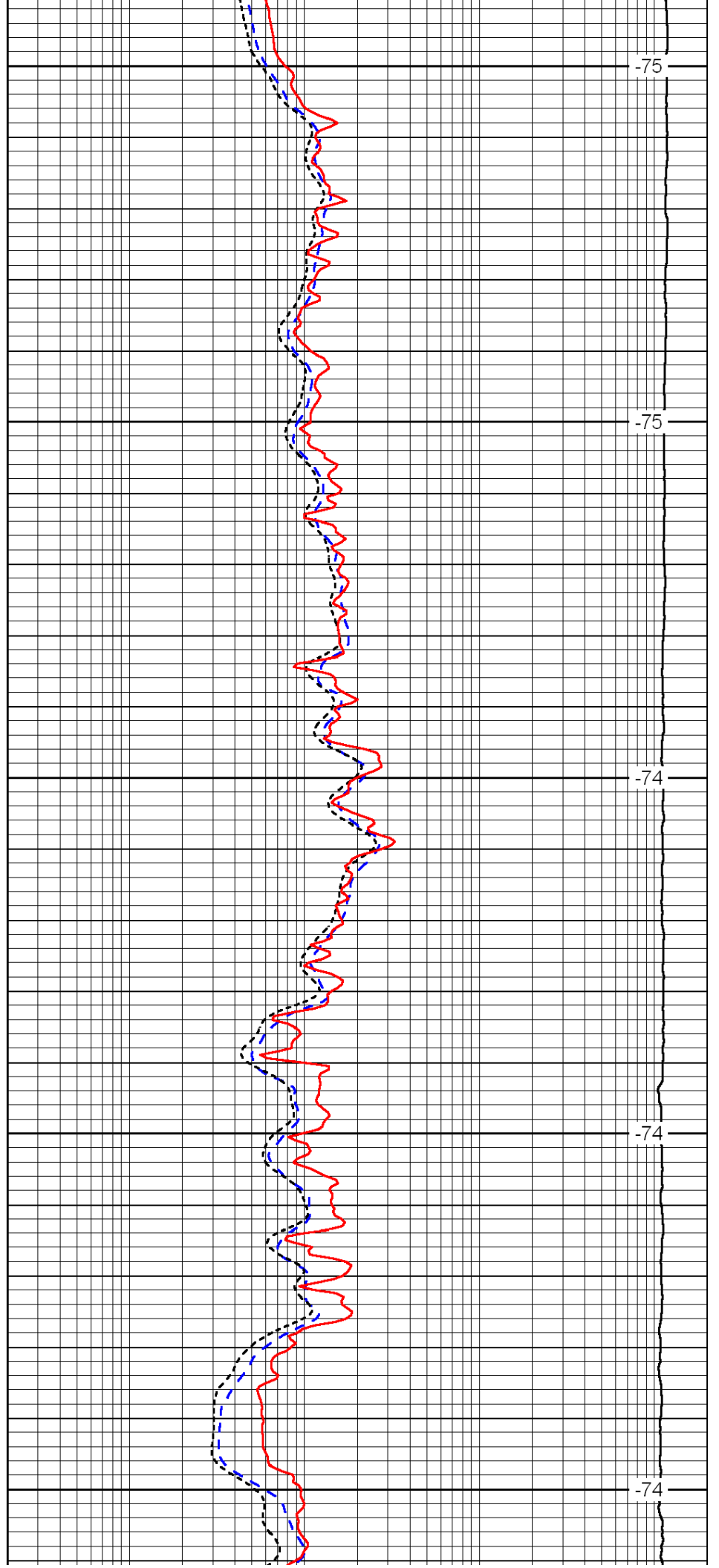
400

450

500

550

600



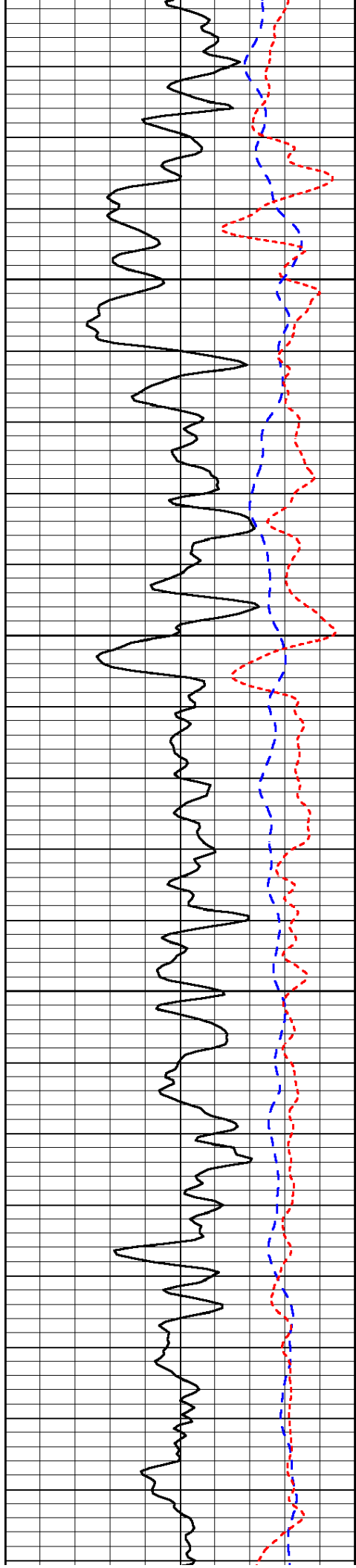
-75

-75

-74

-74

-74

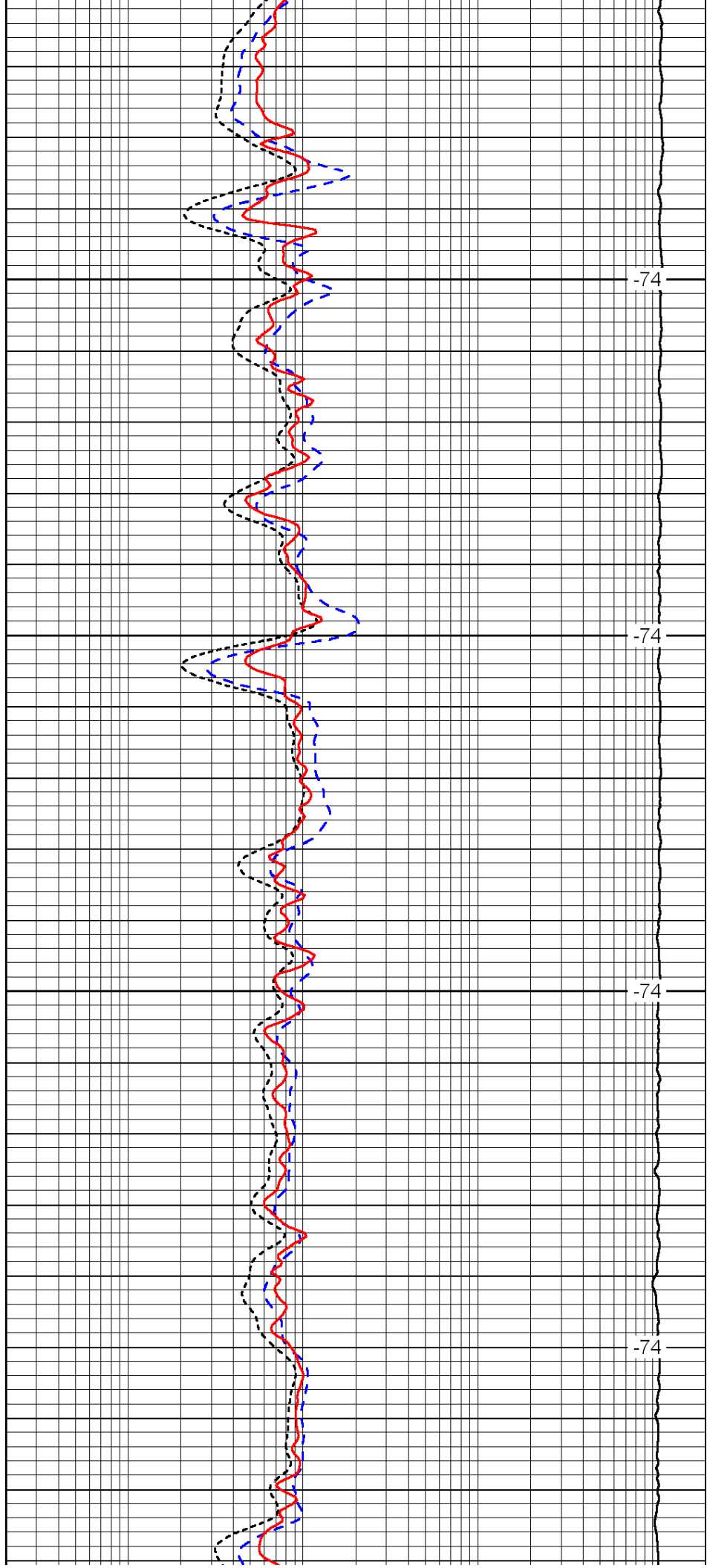


650

700

750

800

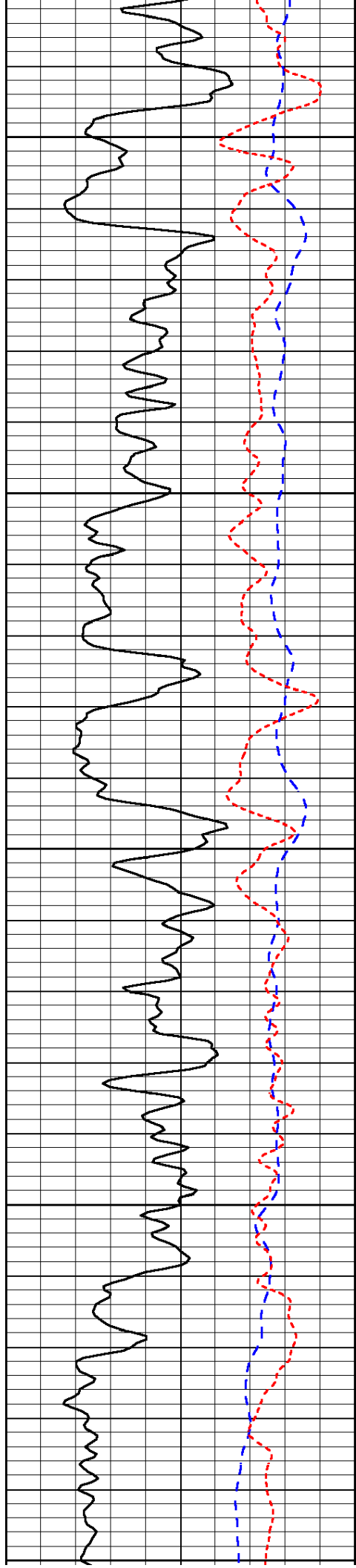


-74

-74

-74

-74



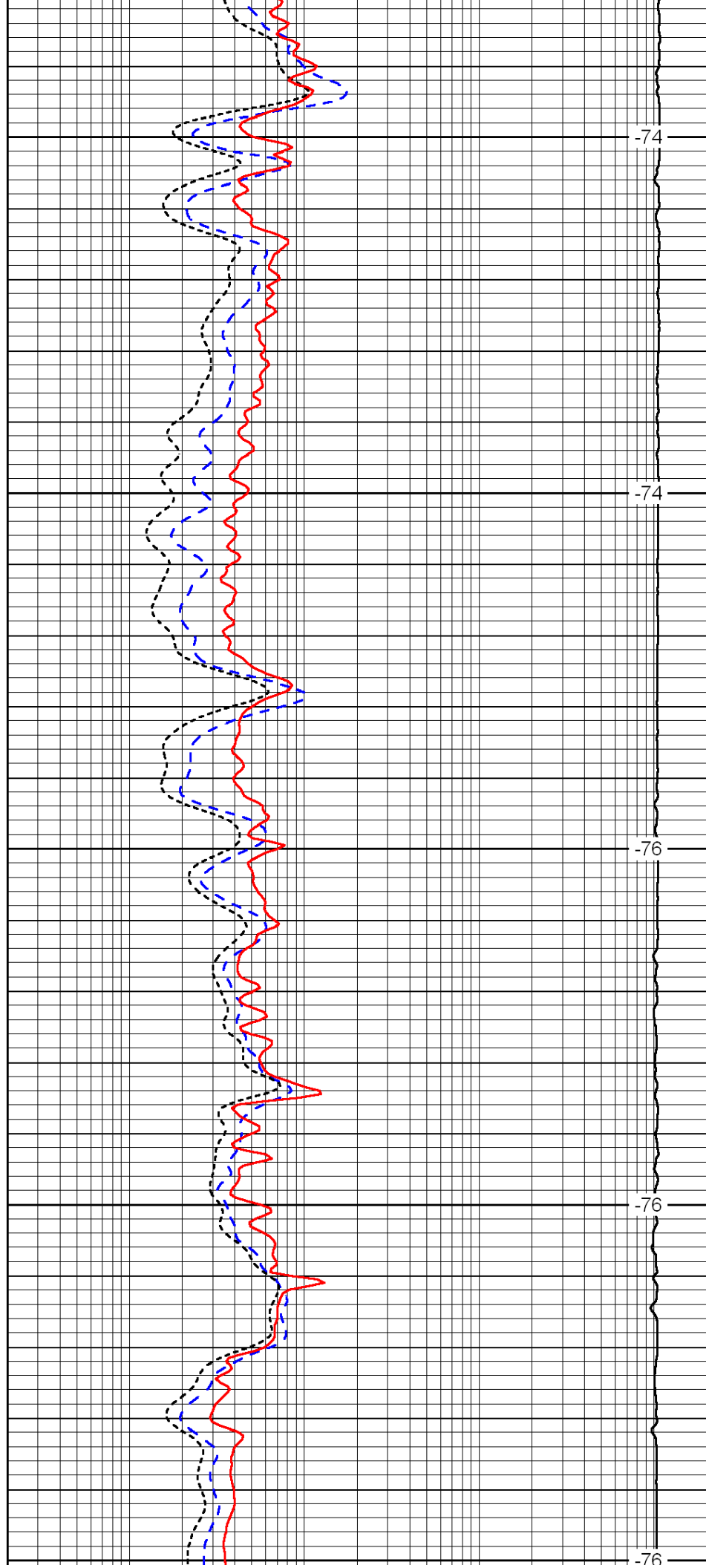
850

900

950

1000

1050



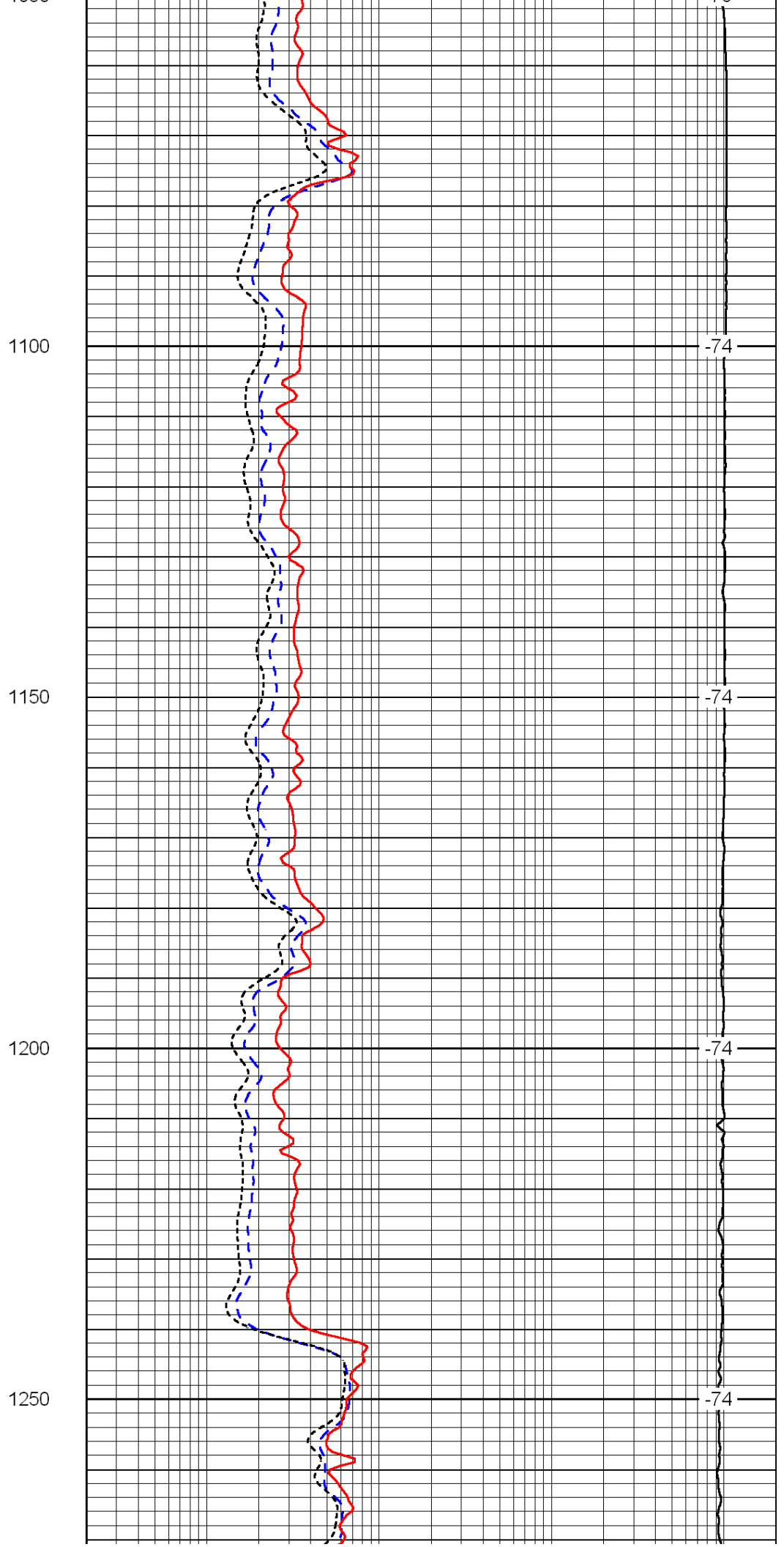
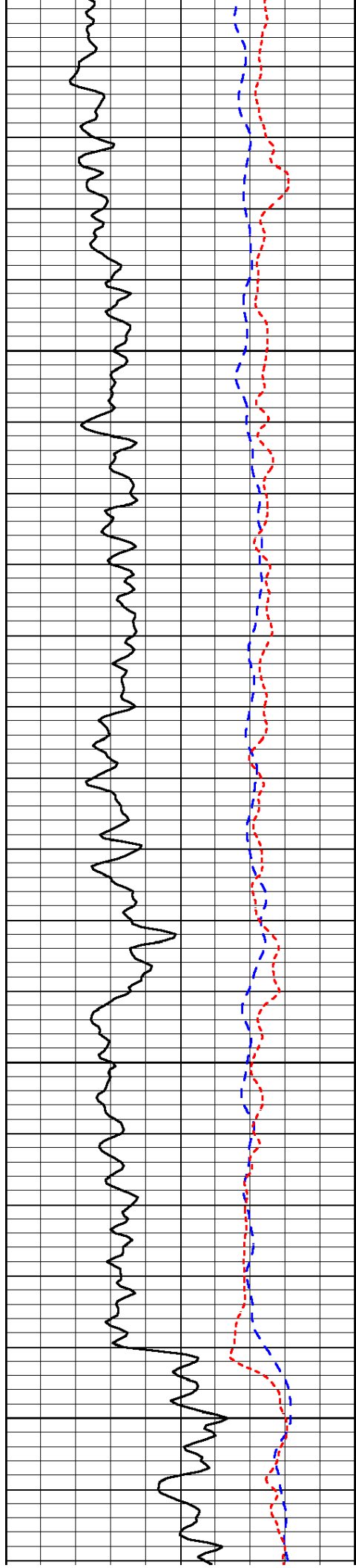
-74

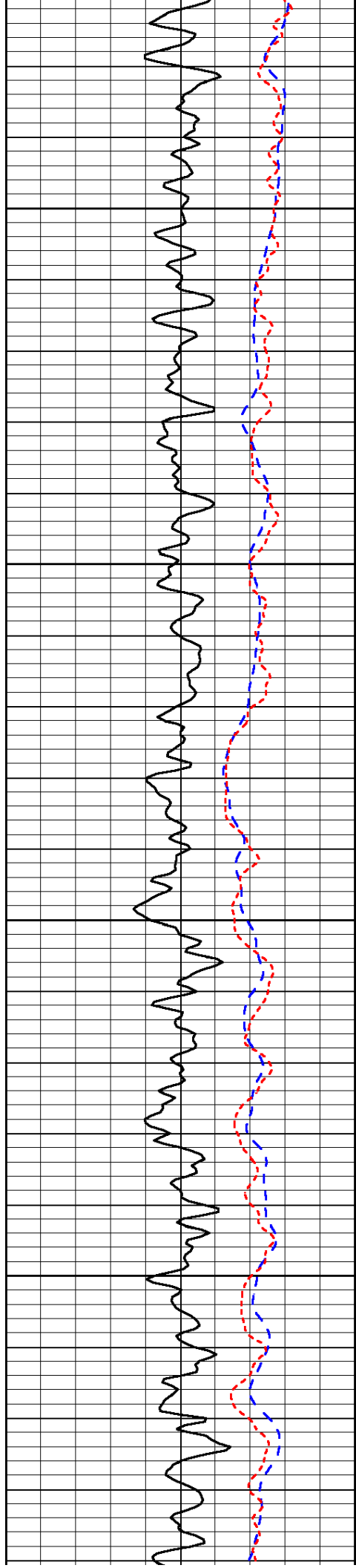
-74

-76

-76

-76



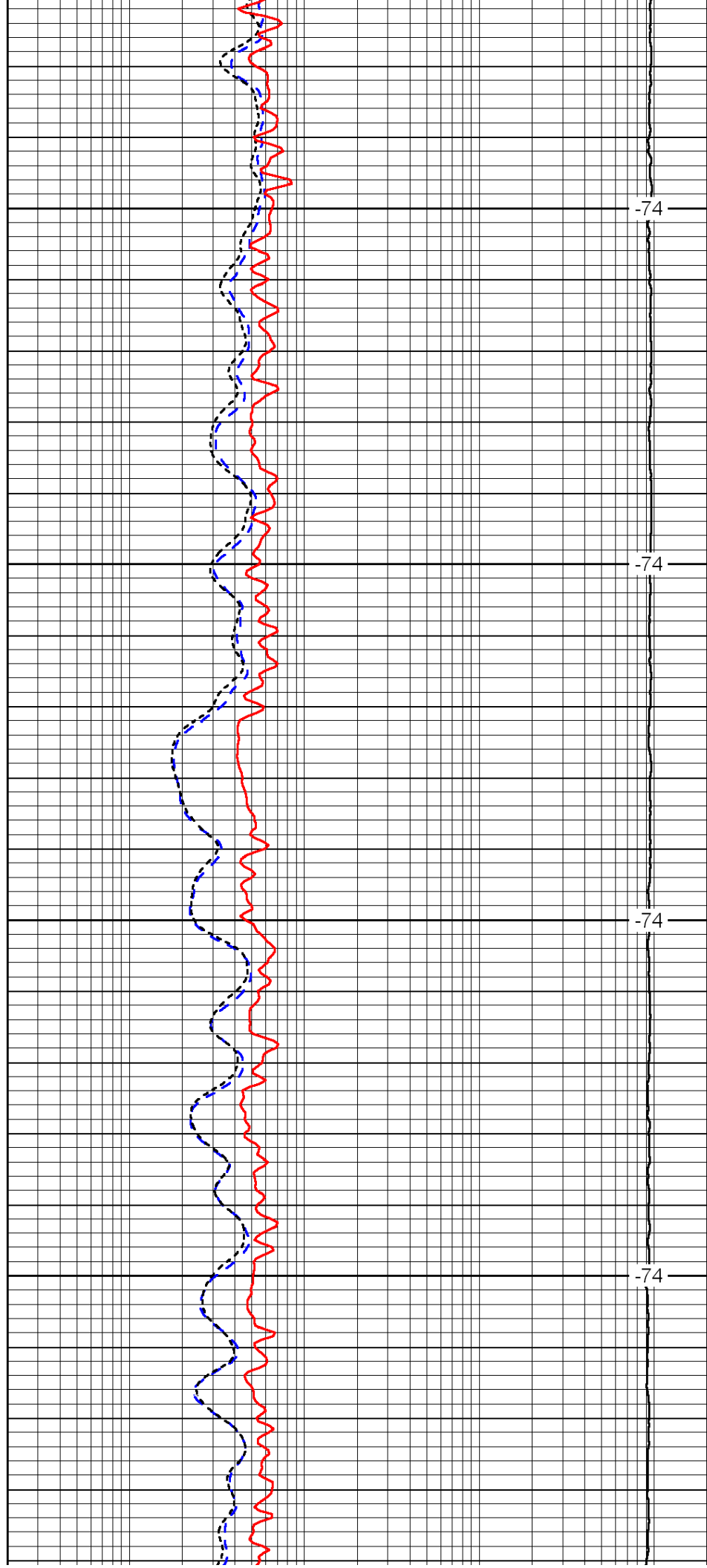


1300

1350

1400

1450

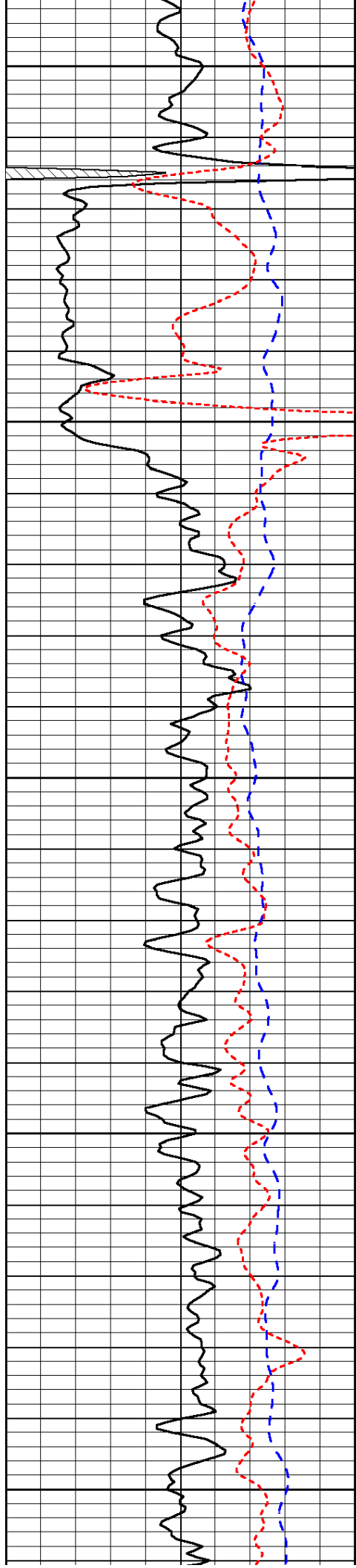


-74

-74

-74

-74



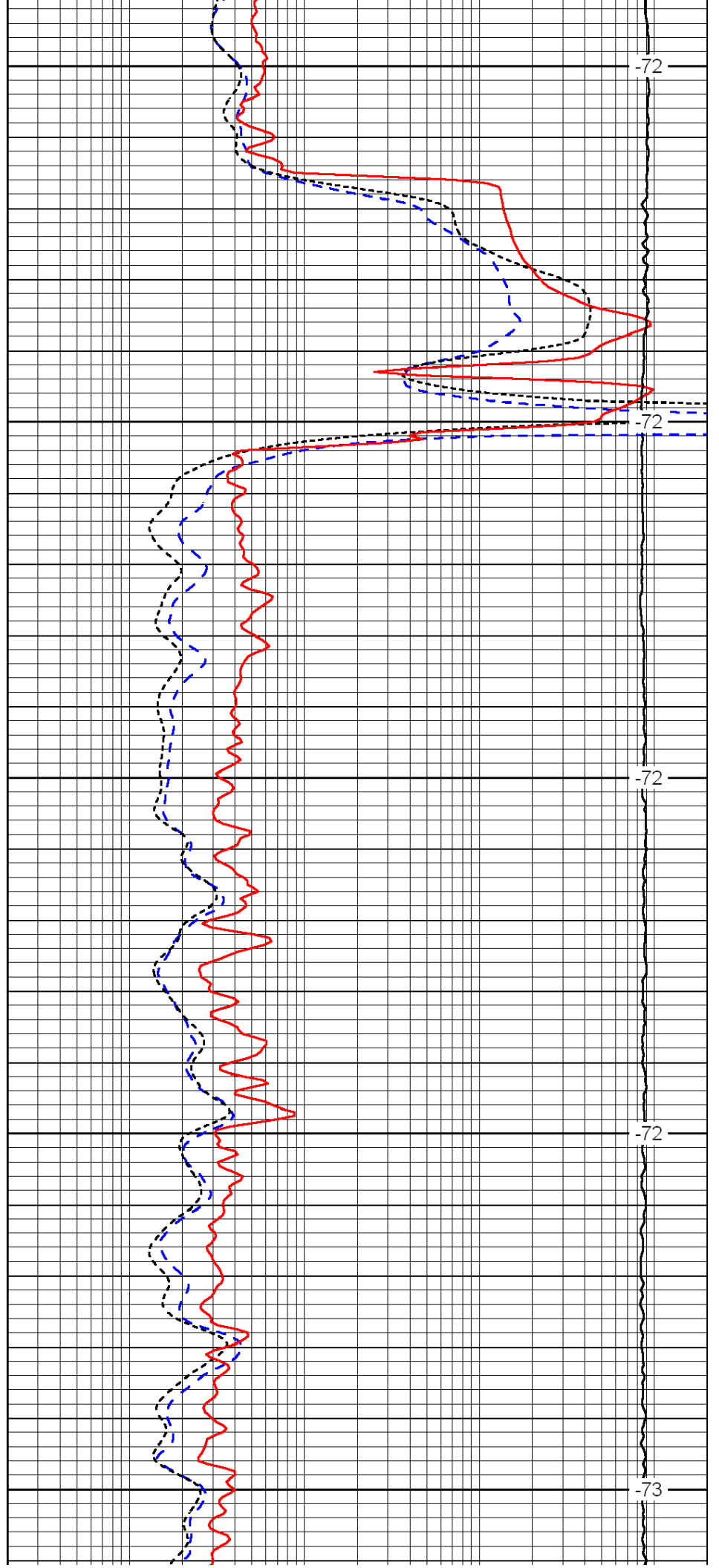
1500

1550

1600

1650

1700



-72

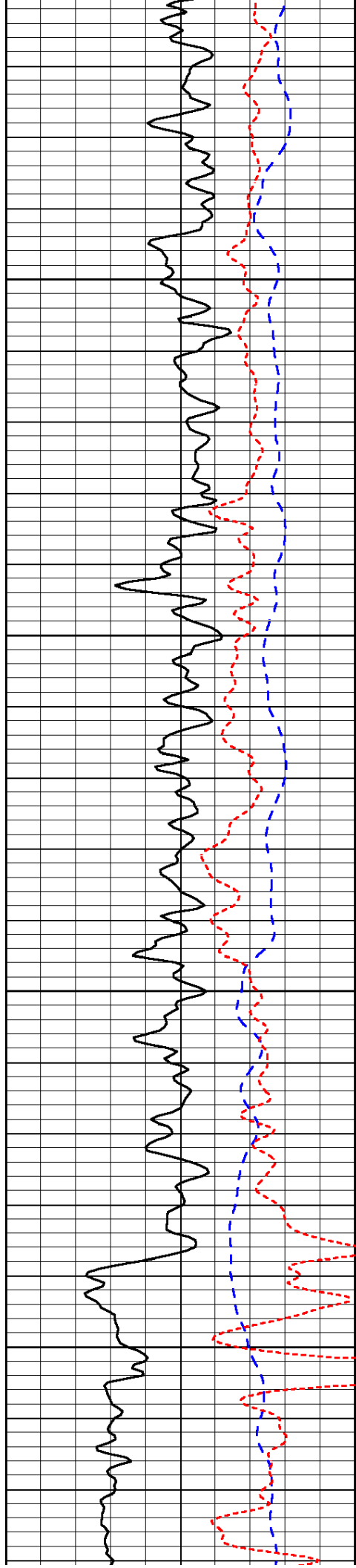
-72

-72

-72

-73



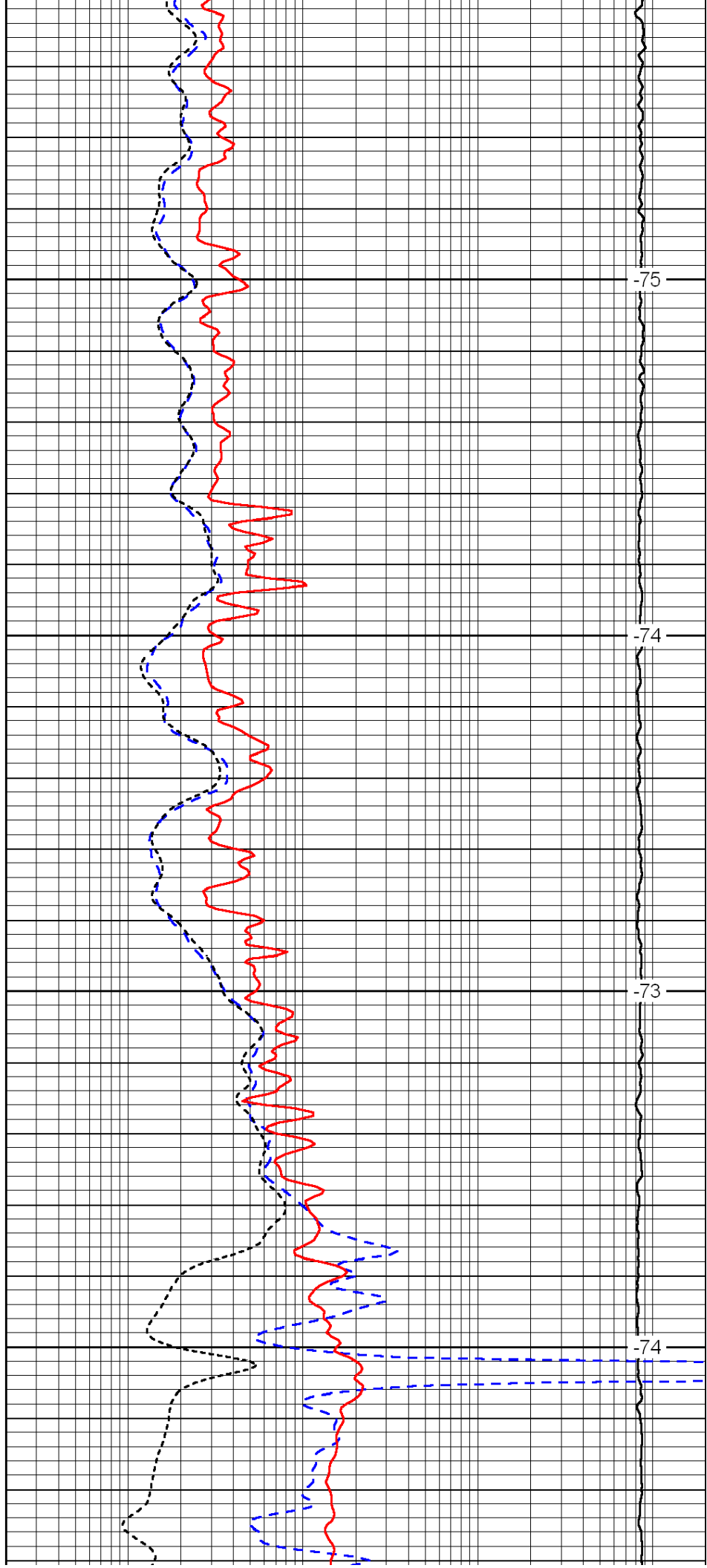


1750

1800

1850

1900

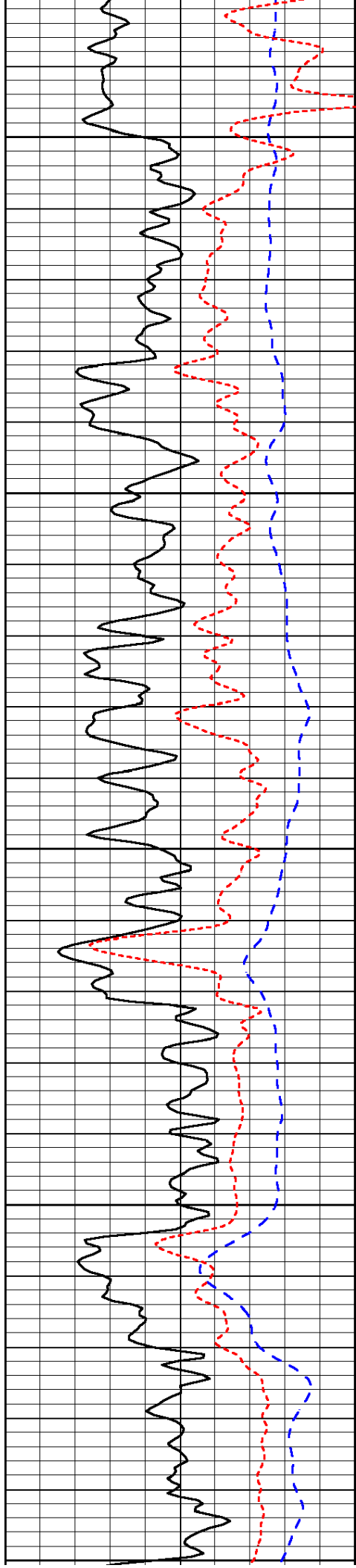


-75

-74

-73

-74



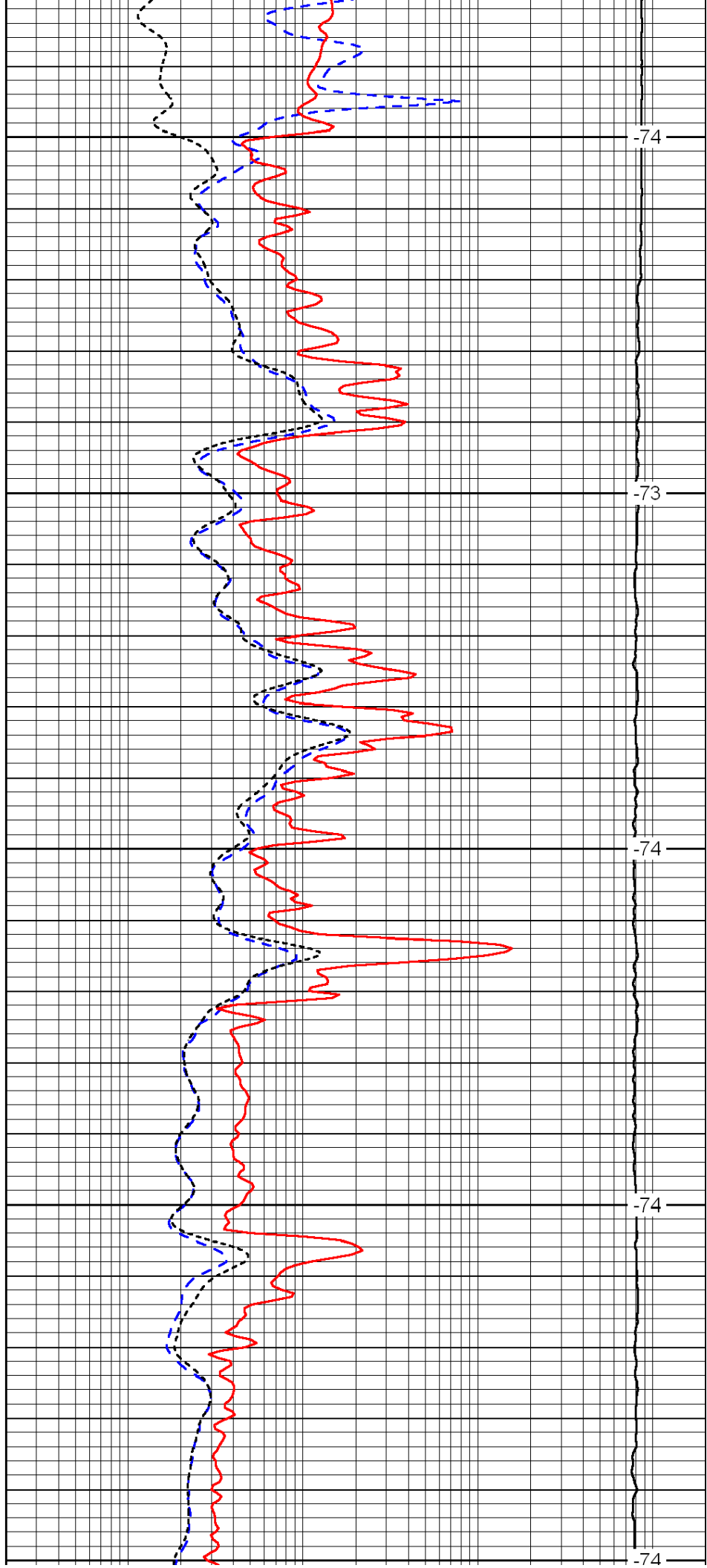
1950

2000

2050

2100

2150



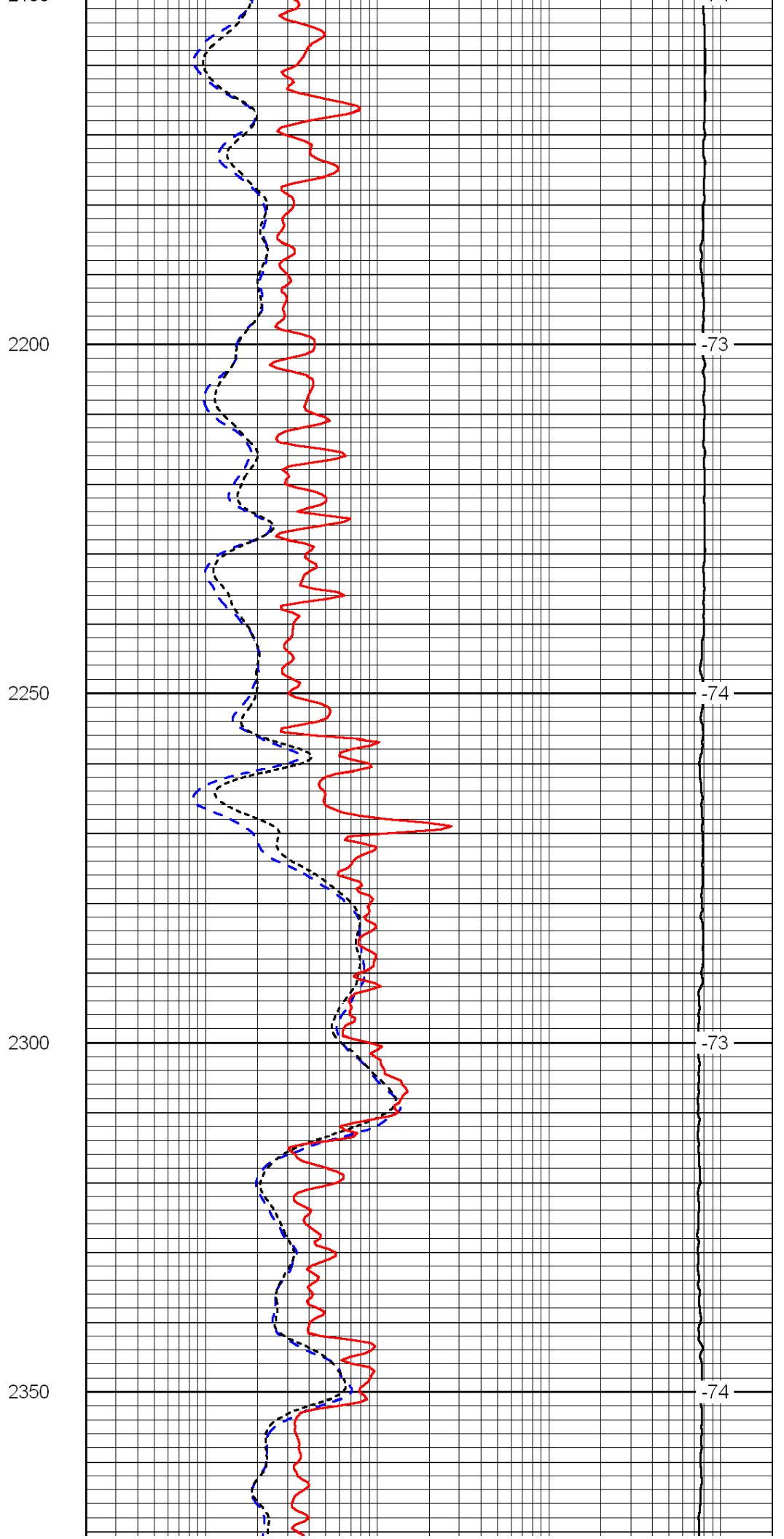
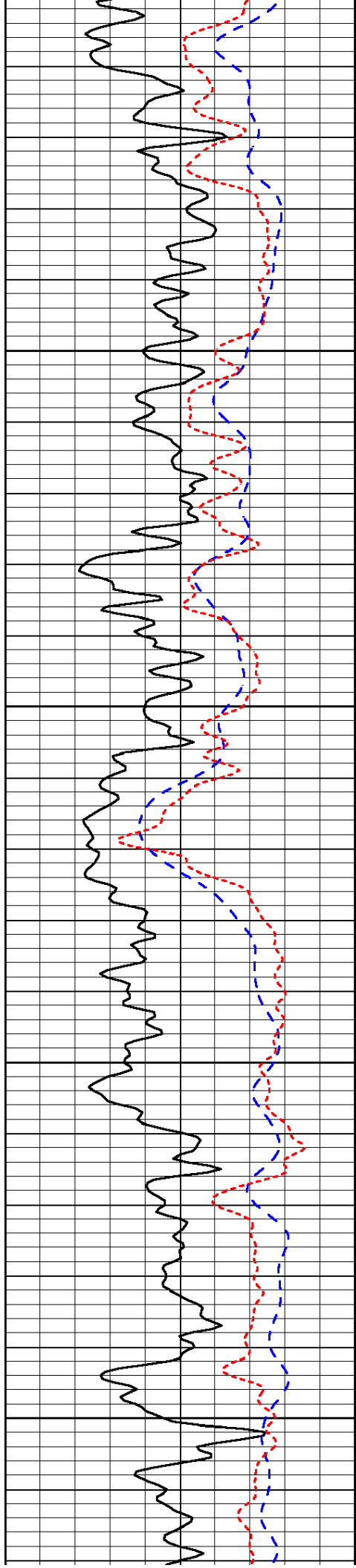
-74

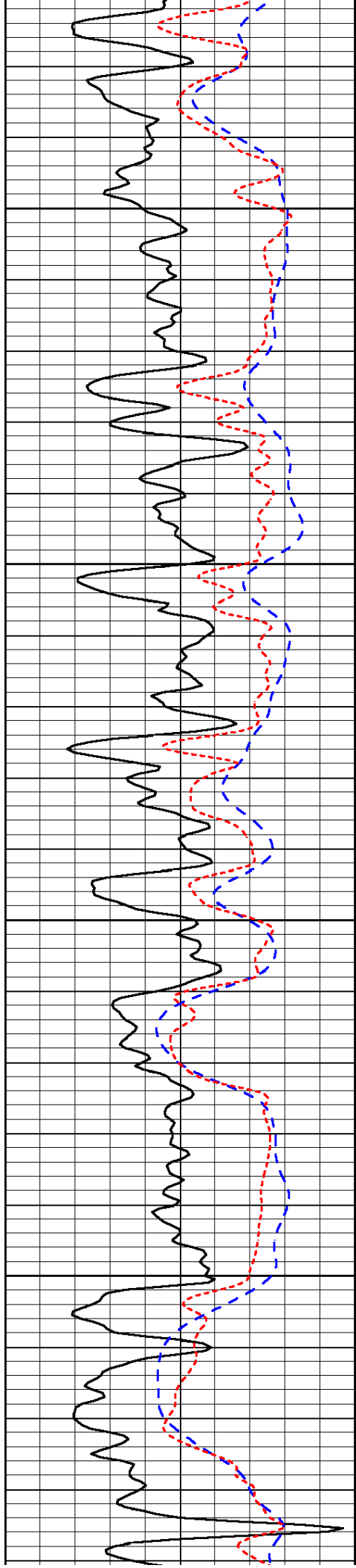
-73

-74

-74

-74



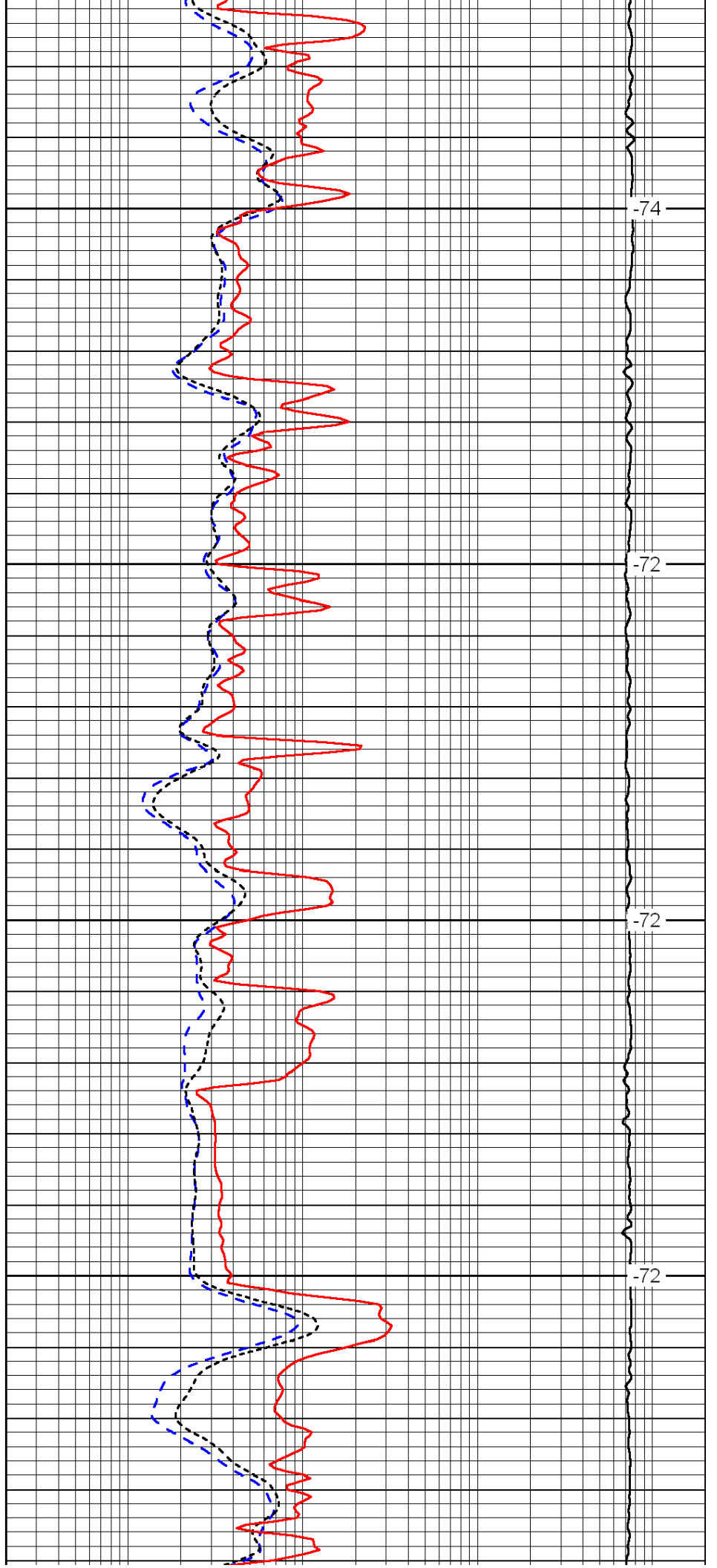


2400

2450

2500

2550

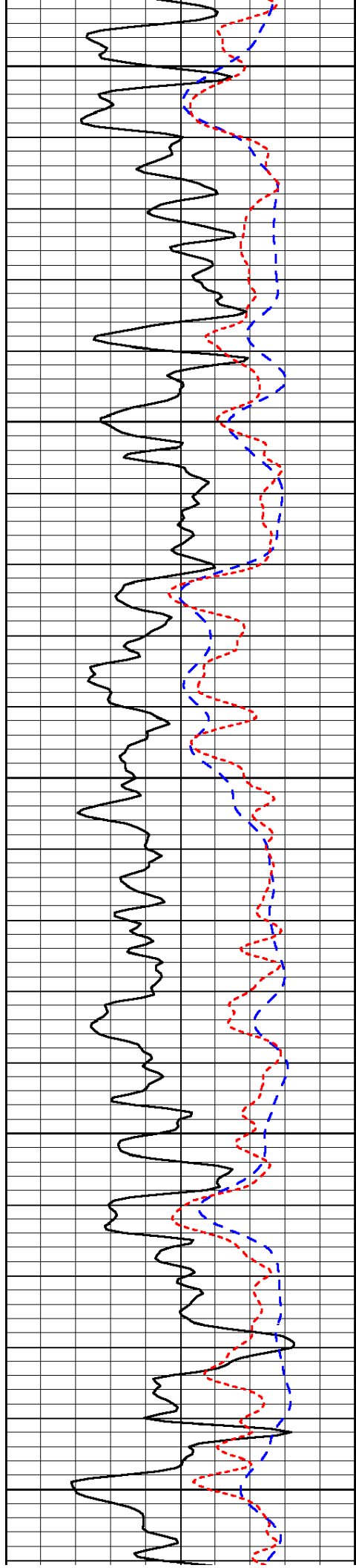


-74

-72

-72

-72



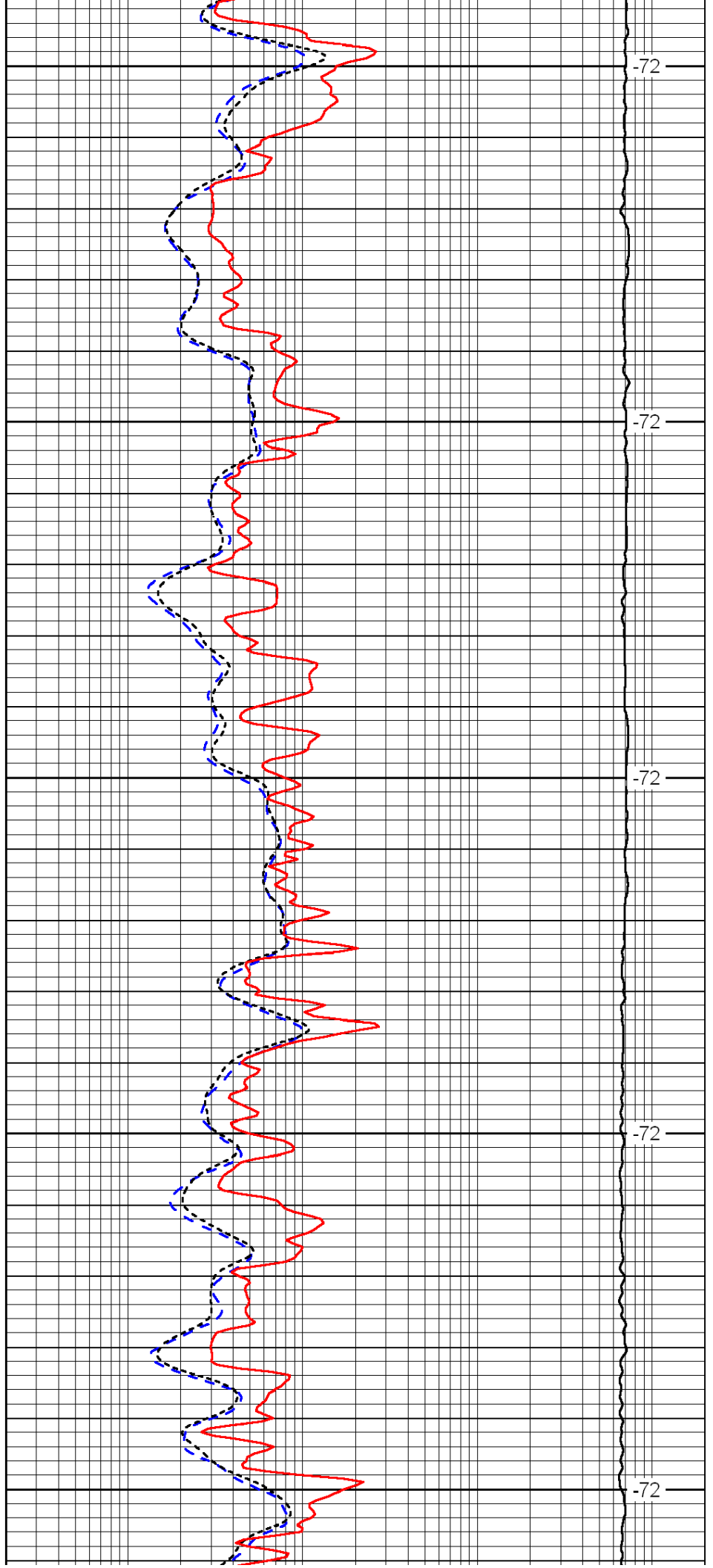
2600

2650

2700

2750

2800



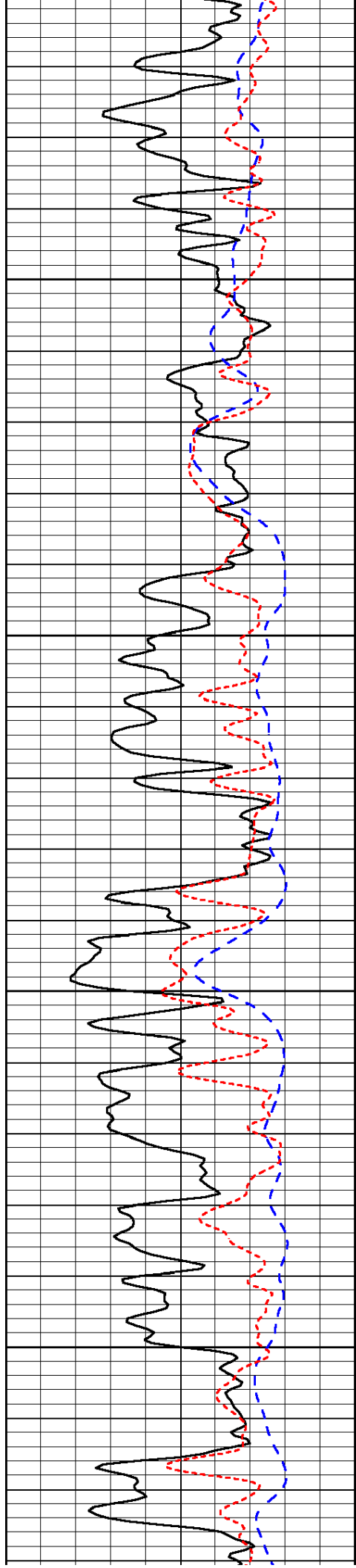
-72

-72

-72

-72

-72

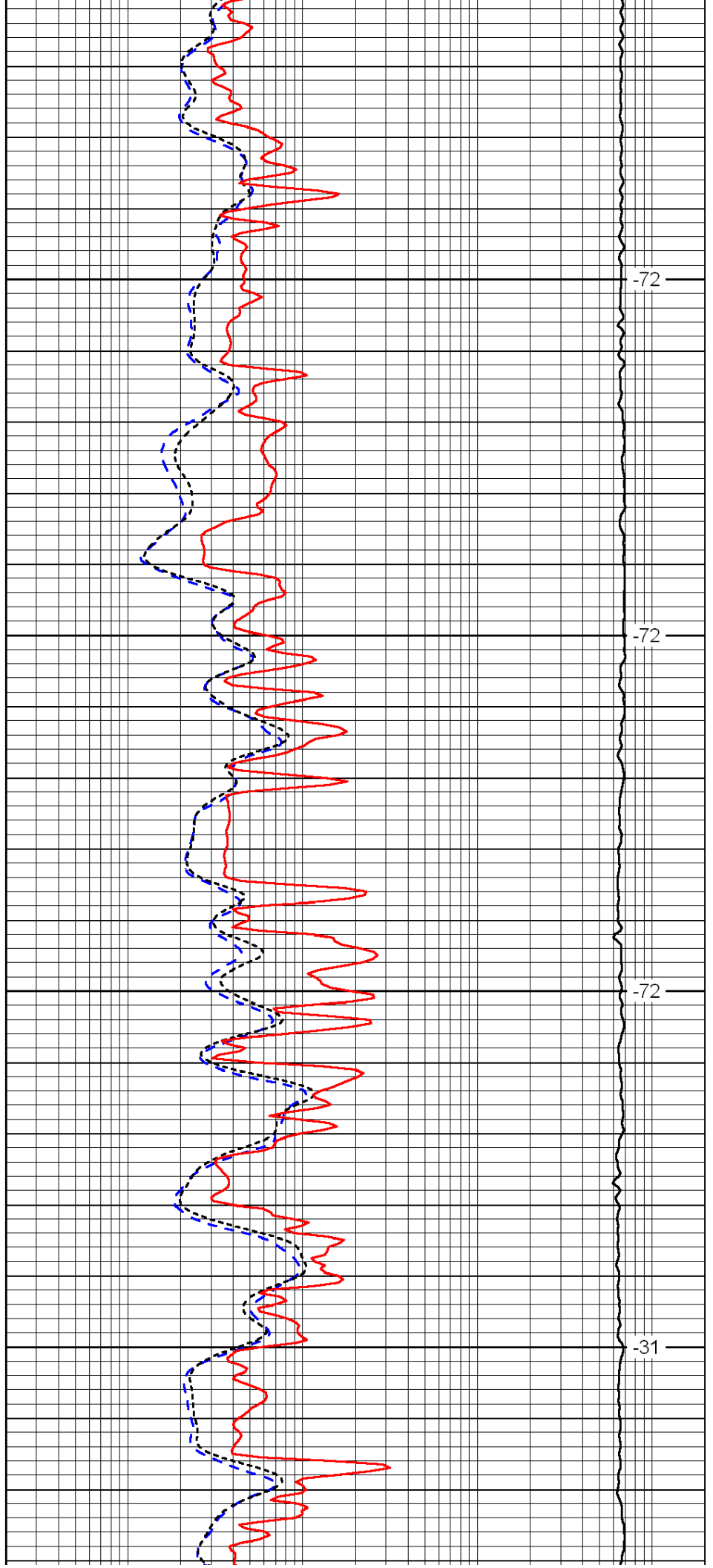


2850

2900

2950

3000

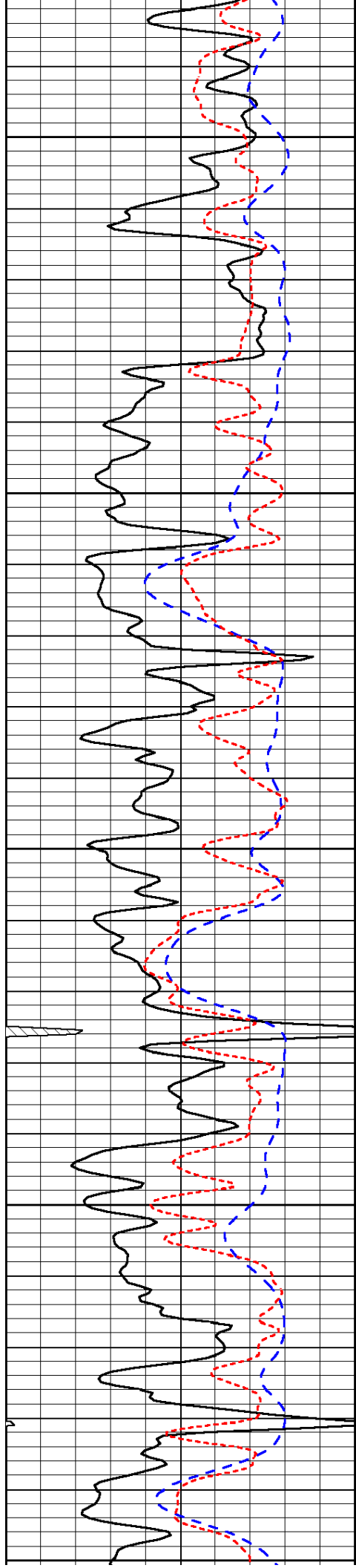


-72

-72

-72

-31



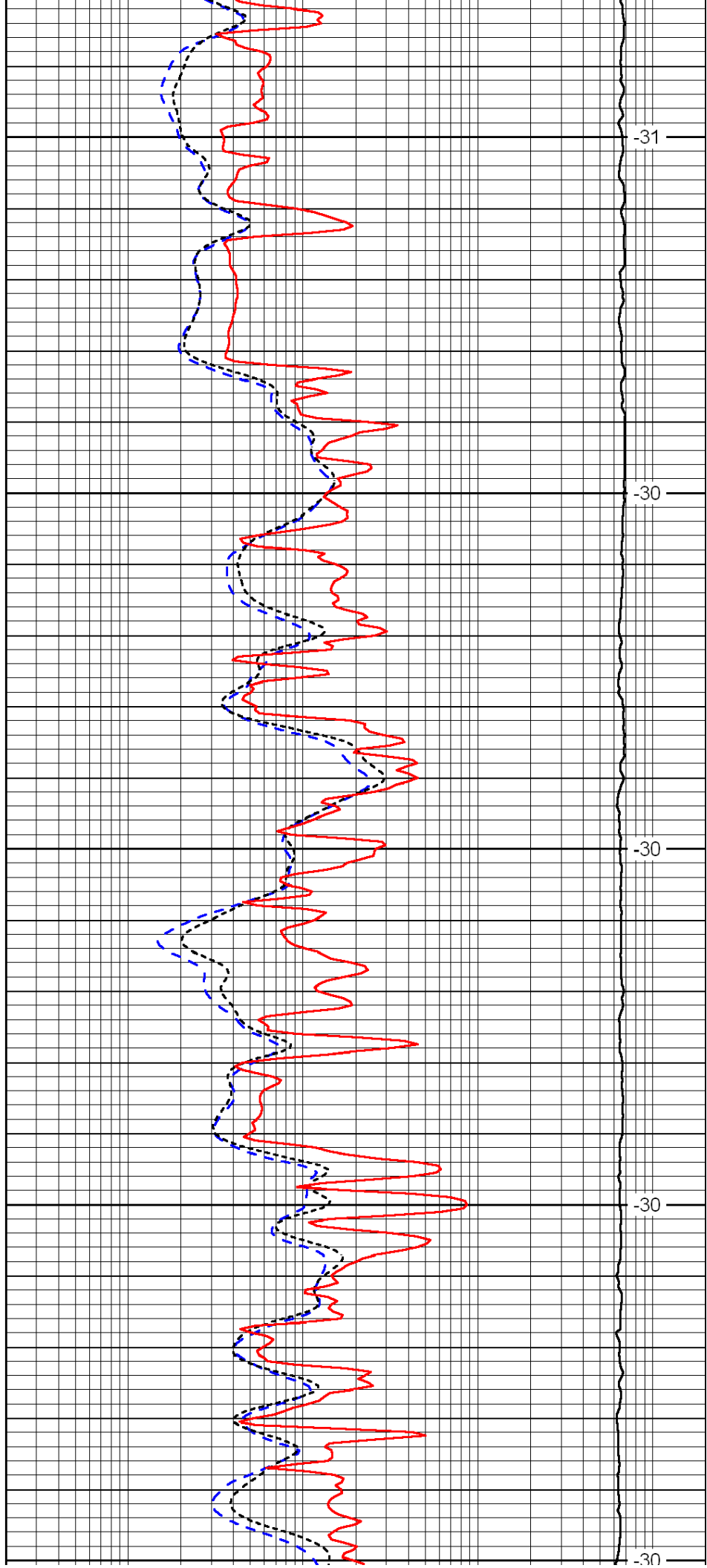
3050

3100

3150

3200

3250



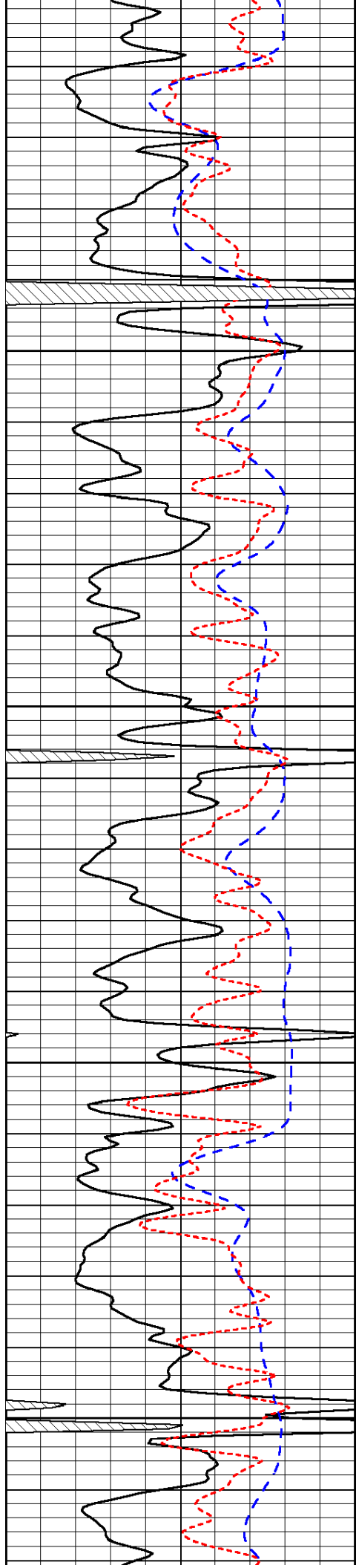
-31

-30

-30

-30

-30

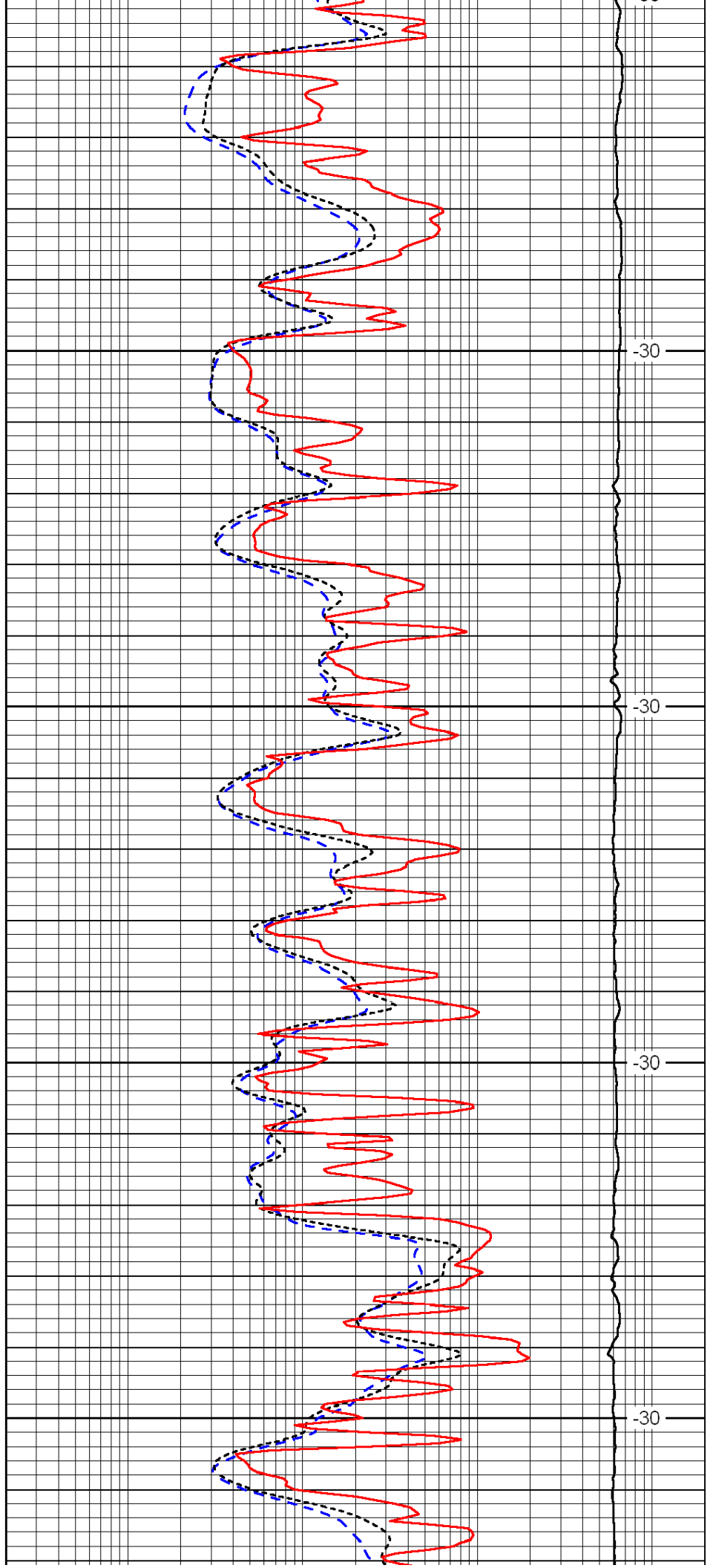


3300

3350

3400

3450



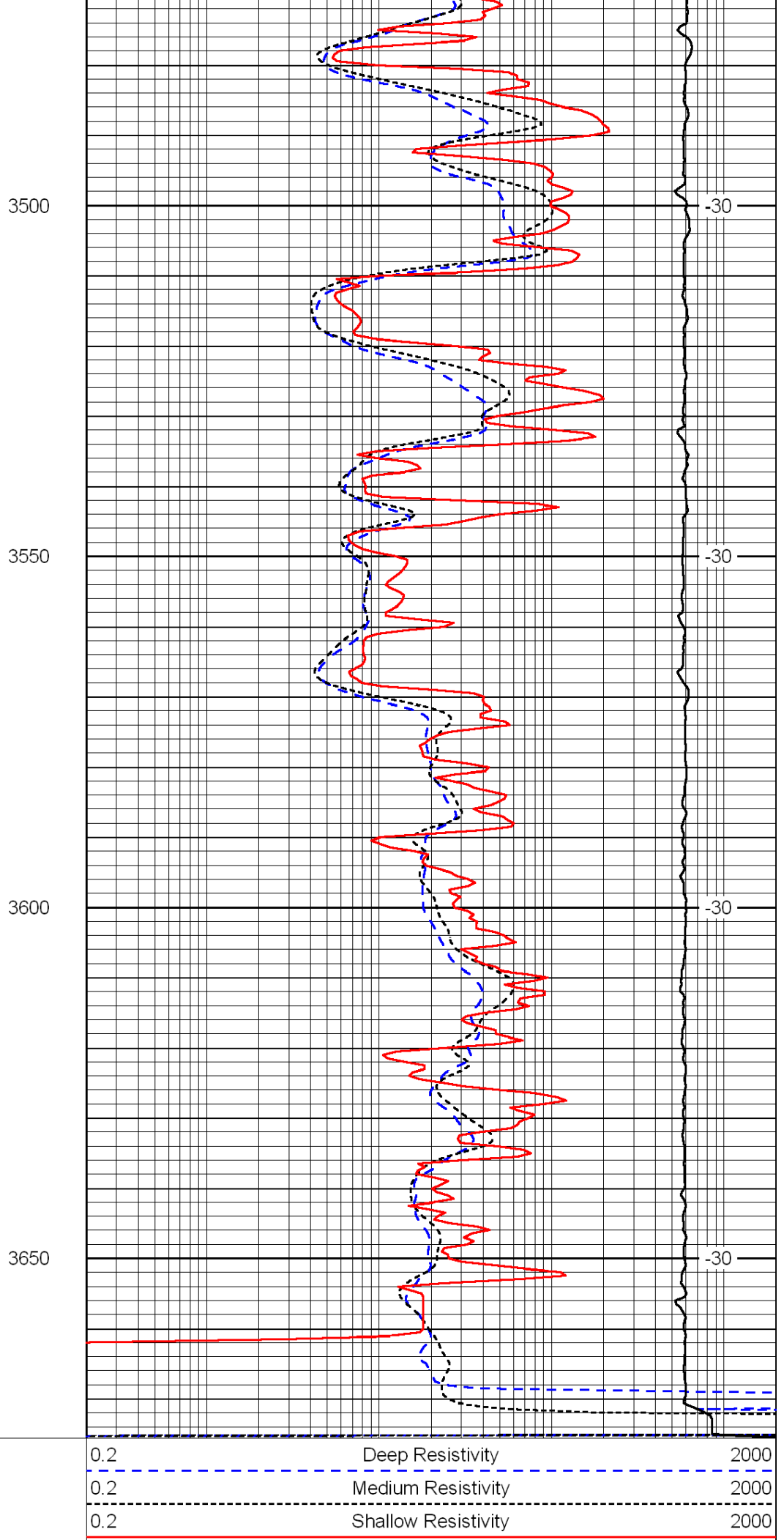
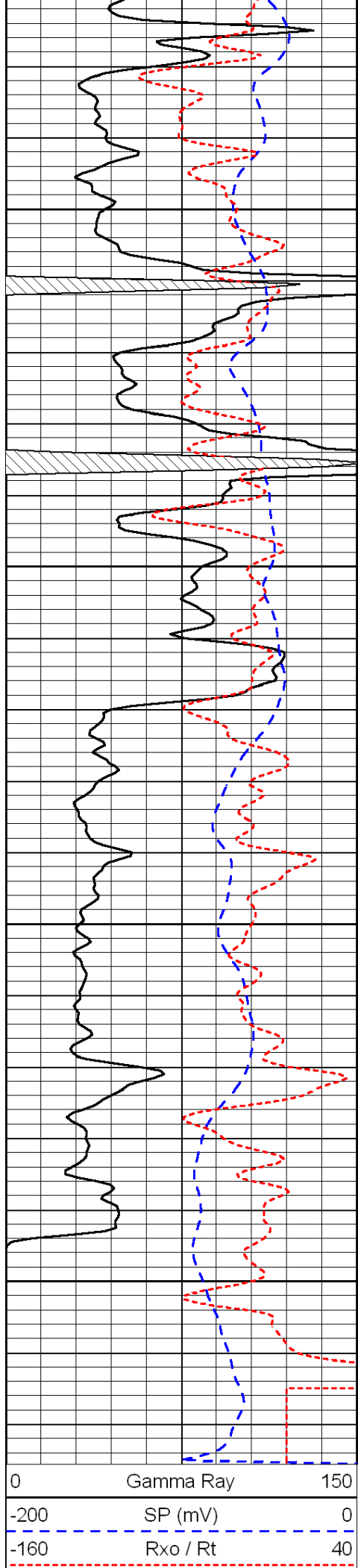
-30

-30

-30

-30





15000

Line Tension

0

LSPD