



**Borehole Compensated
Sonic Log**

DIGITAL LOG (785) 625-3858

| | | | |
|------------------------|-------------------------------|-------------------------|--------------------------------------|
| API No. | 15-163-23,695-00-00 | | |
| Company | Murfin Drilling Company, Inc. | | |
| Well | Hilgers No.4-19 | | |
| Field | Mayhew | | |
| County | Rooks | | |
| Location | 800' FNL & 1450' FWL | | |
| | Sec: 19 | Twp: 9S | Rge: 18W |
| Permanent Datum | Ground Level | Elevation 2152 | Other Services CNL/CDL MEL/DIL |
| Log Measured From | Kelly Bushing | 5 Ft. Above Perm. Datum | |
| Drilling Measured From | Kelly Bushing | | |
| Date | 7/15/2011 | | |
| Run Number | Two | | |
| Type Log | BHC Sonic | | |
| Depth Driller | 3670 | | |
| Depth Logger | 3670 | | |
| Bottom Logged Interval | 3659 | | |
| Top Logged Interval | 200 | | |
| Type Fluid In Hole | Chemical | | |
| Salinity, PPM CL | 5,000 | | |
| Density | 9.4 | | |
| Level | Full | | |
| Max. Rec. Temp. F | 113 | | |
| Operating Rig Time | 4 Hours | | |
| Equipment -- Location | 15 Hays | | |
| Recorded By | C.Desaire | | |
| Witnessed By | Jeff Christian | | |

| Borehole Record | | | | Casing Record | | | |
|-----------------|-------|------|------|---------------|------|------|-----|
| Run No. | Bit | From | To | Size | Wgt. | From | To |
| 1 | 12.25 | 00 | 218 | 8.625 | 24# | 00 | 218 |
| 2 | 7.875 | 218 | 3670 | | | | |
| | | | | | | | |
| | | | | | | | |
| | | | | | | | |
| | | | | | | | |
| | | | | | | | |
| | | | | | | | |
| | | | | | | | |

<<< Fold Here >>>

All interpretations are opinions based on inferences from electrical or other measurements and we cannot and do not guarantee the accuracy or correctness of any interpretation, and we shall not, except in the case of gross or willful negligence on our part, be liable or responsible for any loss, costs, damages, or expenses incurred or sustained by anyone resulting from any interpretation made by any of our officers, agents or employees. These interpretations are also subject to our general terms and conditions set out in our current Price Schedule.

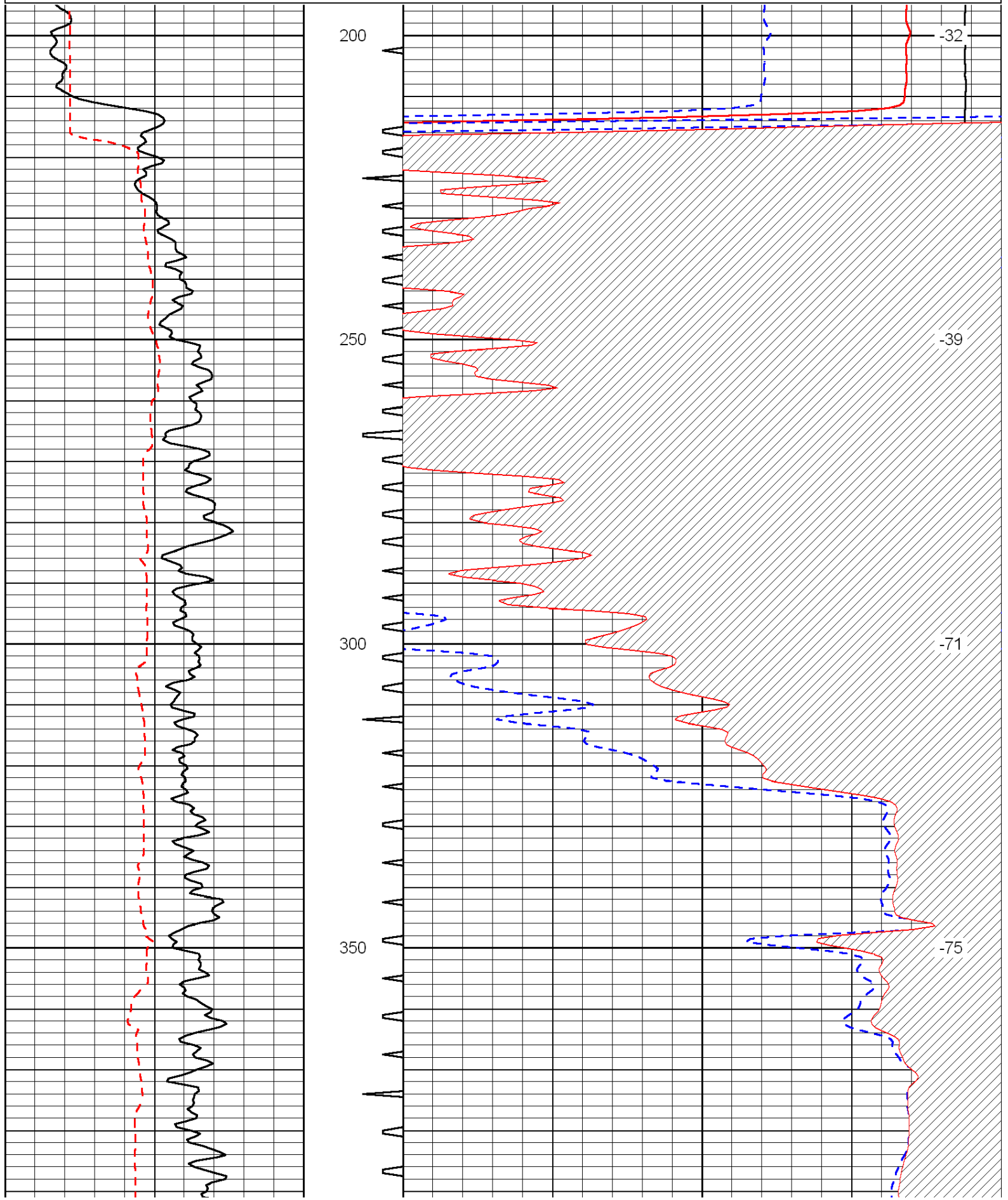
Comments

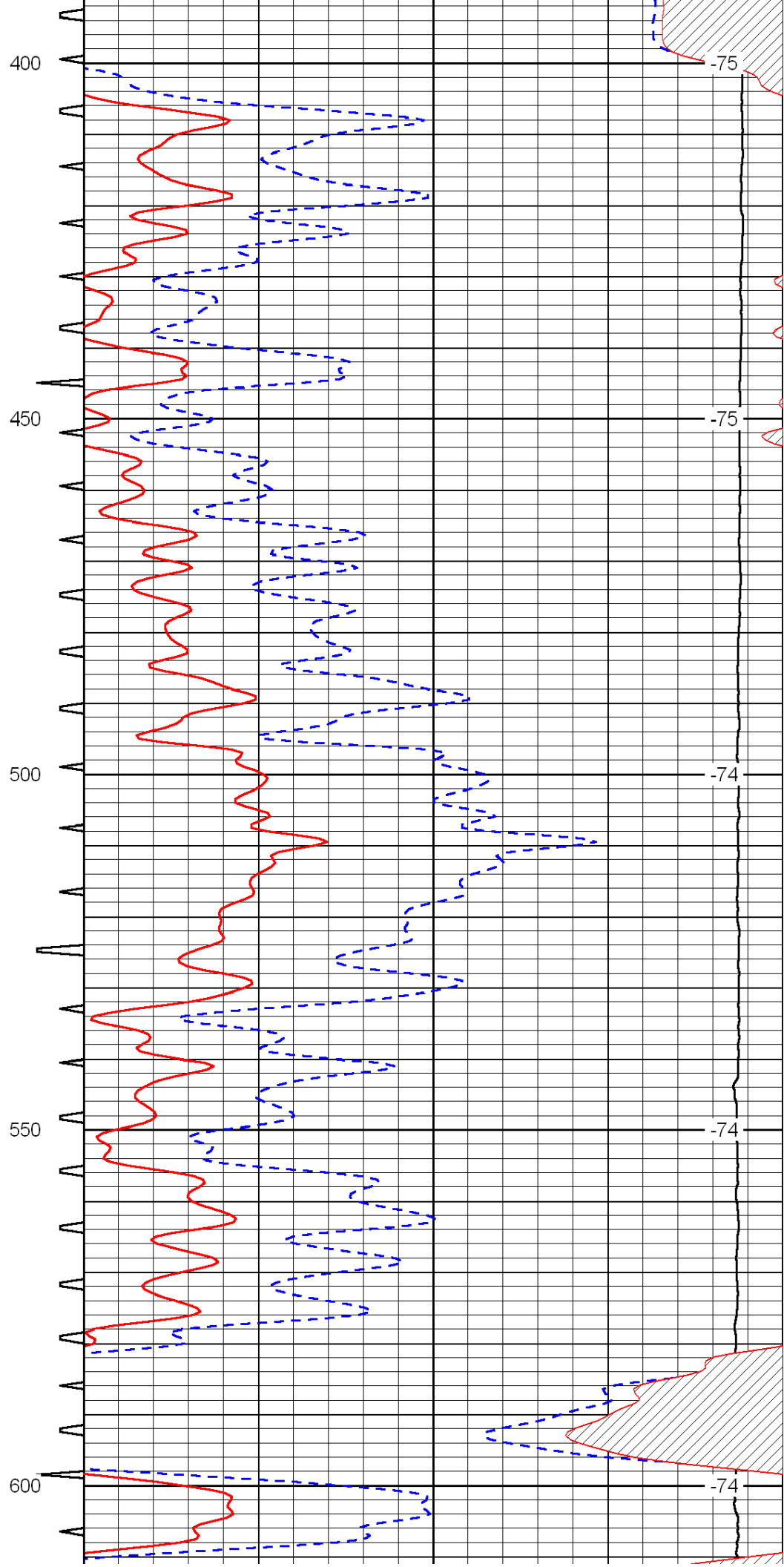
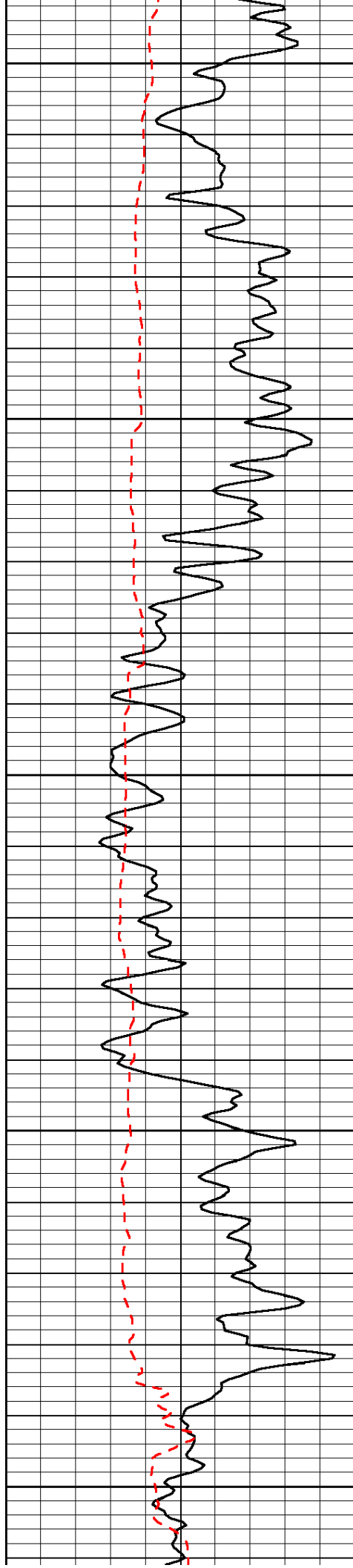
Thank you for using Log-Tech, Inc.
(785) 625-3858

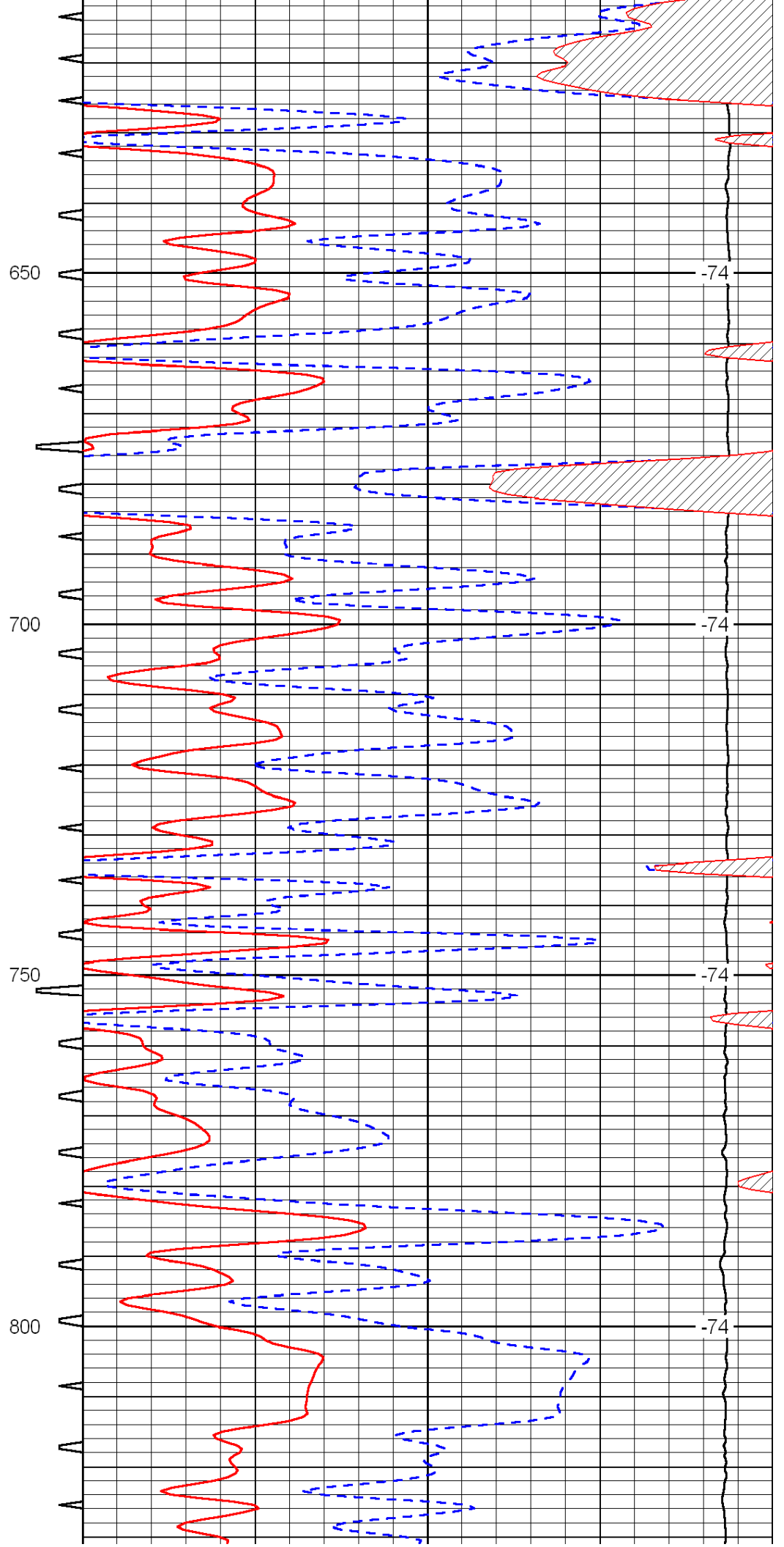
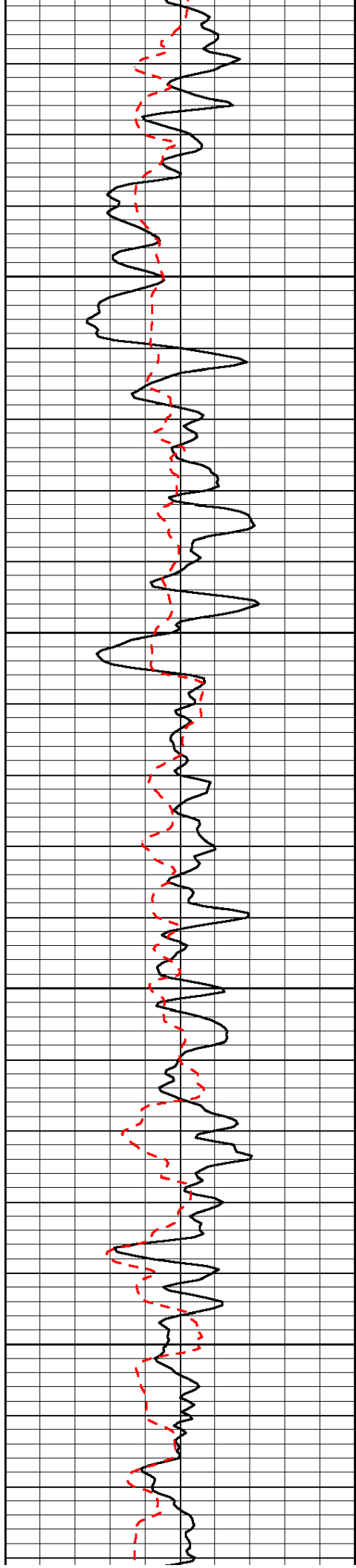
Plainville, 4 1/2 W to 13 Rd,
2 N, E & SE Into

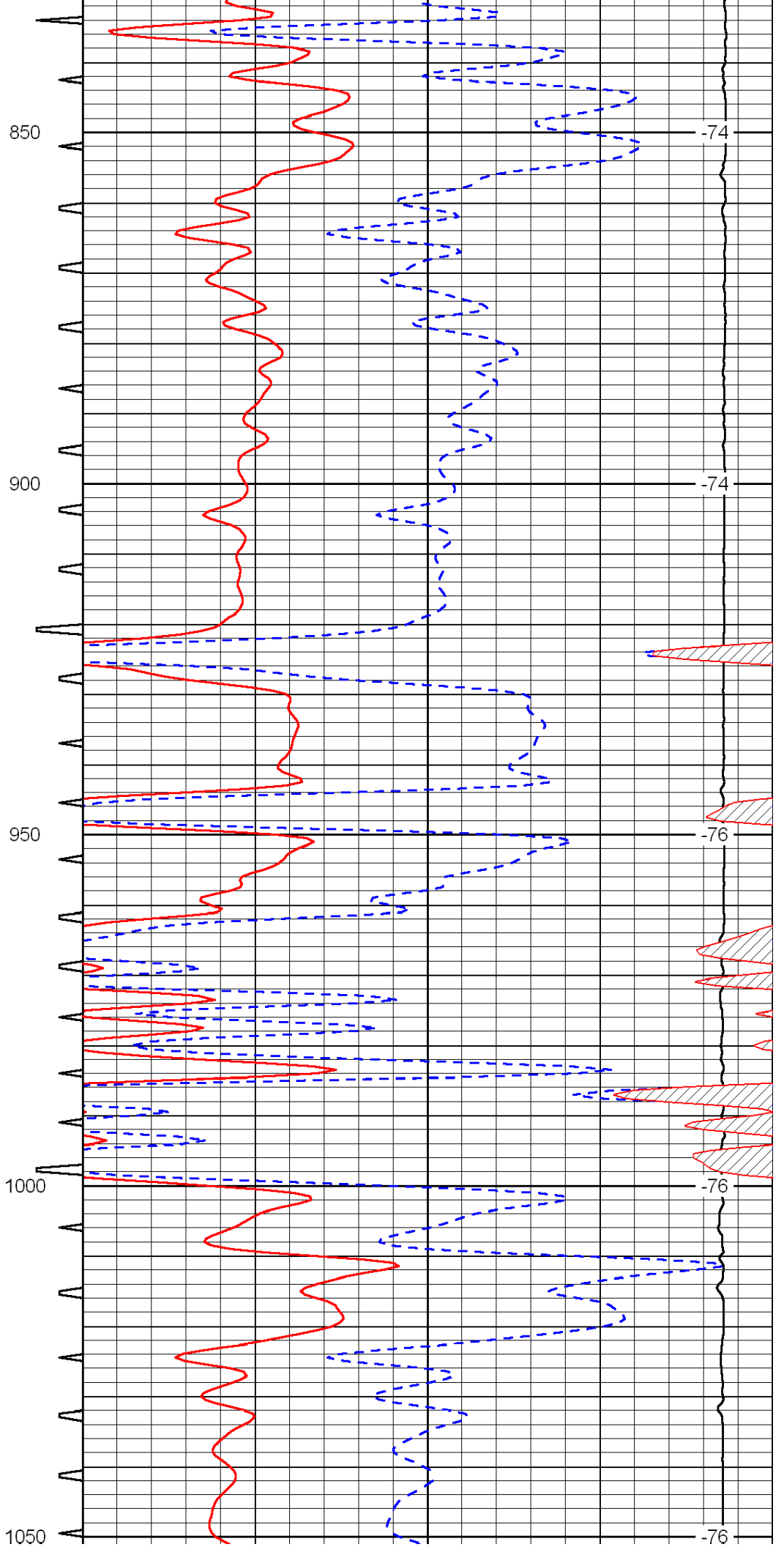
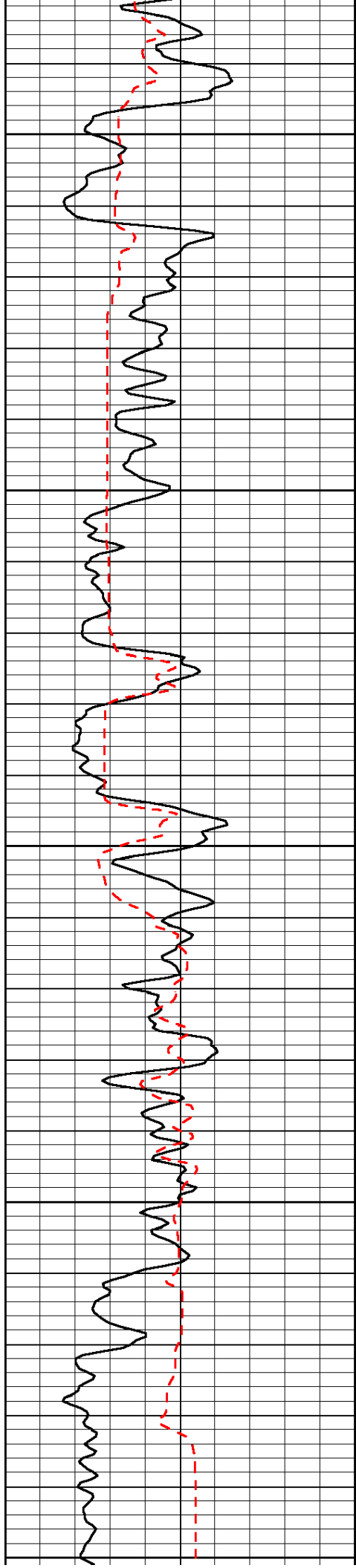
Database File: c:\warrior\data\murfin_hilgers #4-19\murfinhd.db
 Dataset Pathname: dil/murfstk
 Presentation Format: sonic
 Dataset Creation: Fri Jul 15 16:29:57 2011
 Charted by: Depth in Feet scaled 1:240

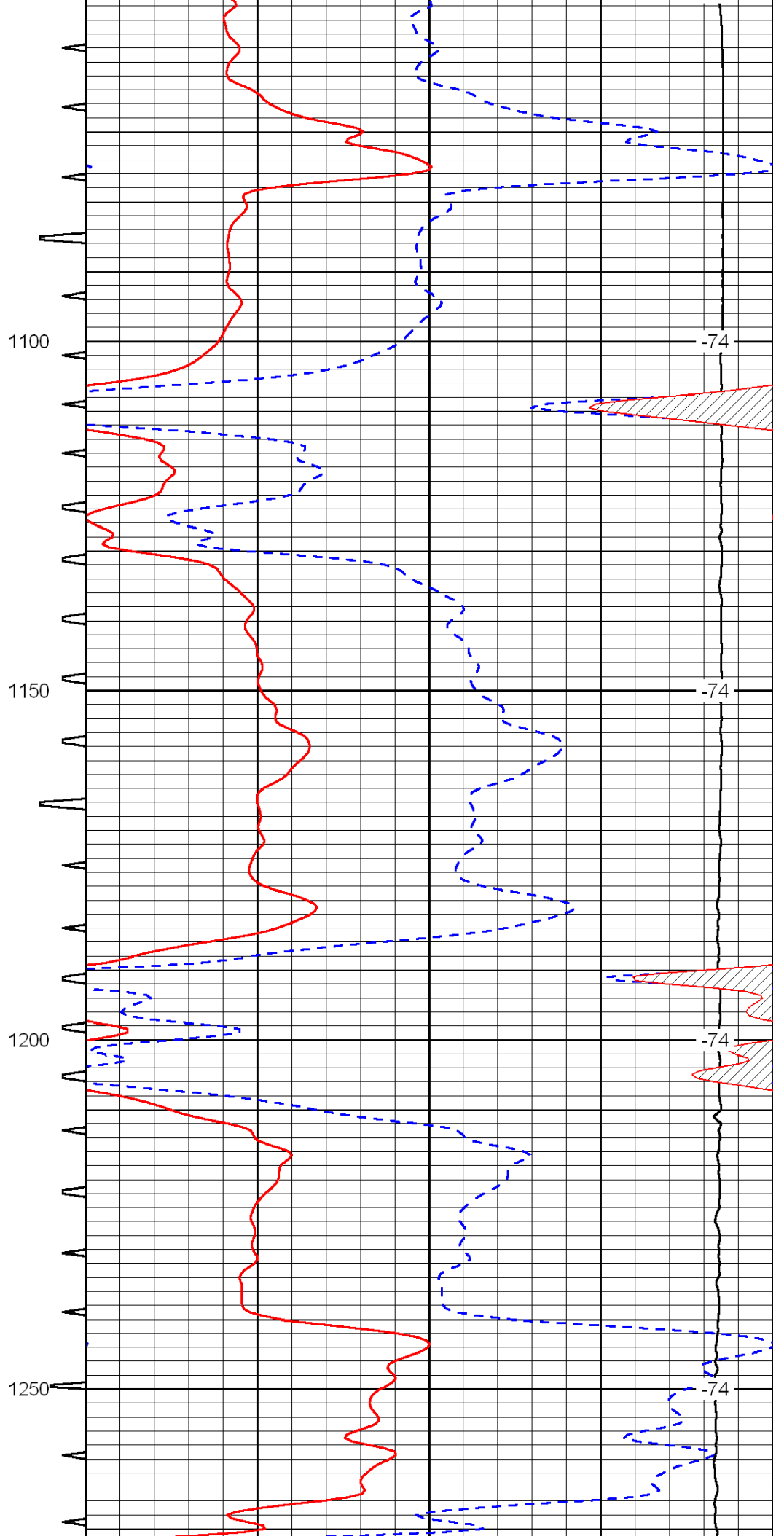
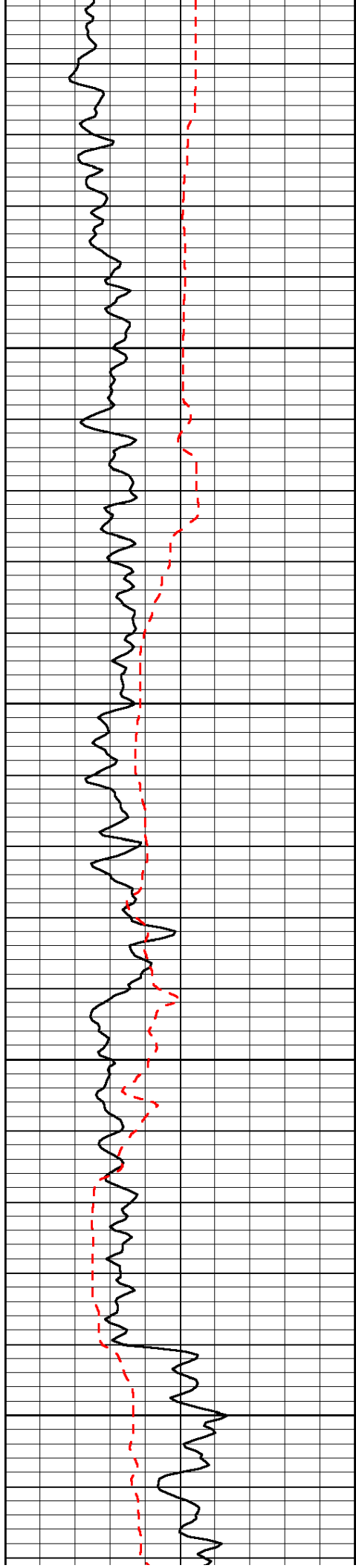
| | | | | | | |
|-----|----------------|-----|-----------|-------|----------------------|------|
| 0 | Gamma Ray | 150 | Sonic Int | 140 | Delta Time (usec/ft) | 40 |
| 150 | Gamma Ray | 300 | 5 | 0 | SPOR | -10 |
| 6 | Caliper (GAPI) | 16 | | 15000 | LTEN (lb) | 0 |
| | | | | | | LSPD |

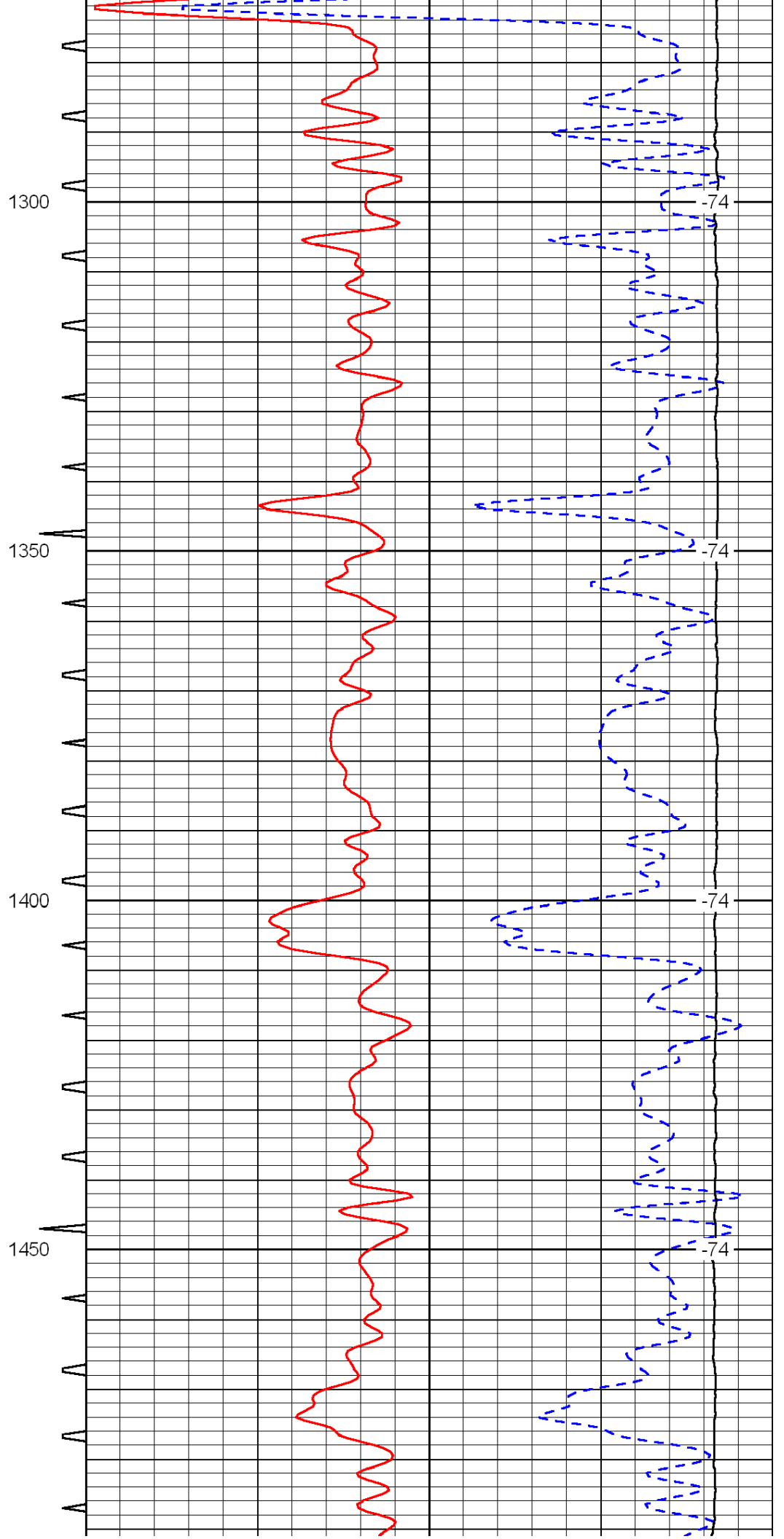
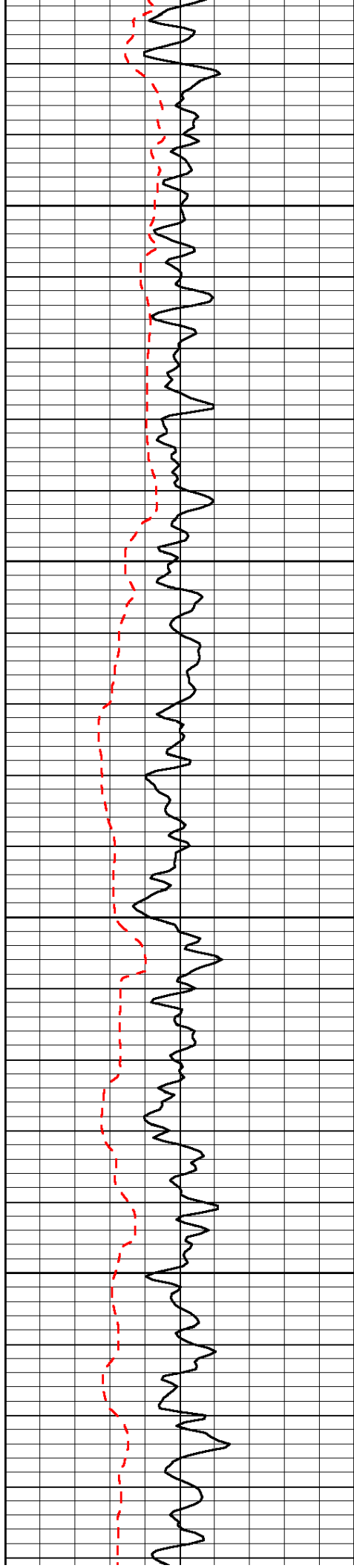


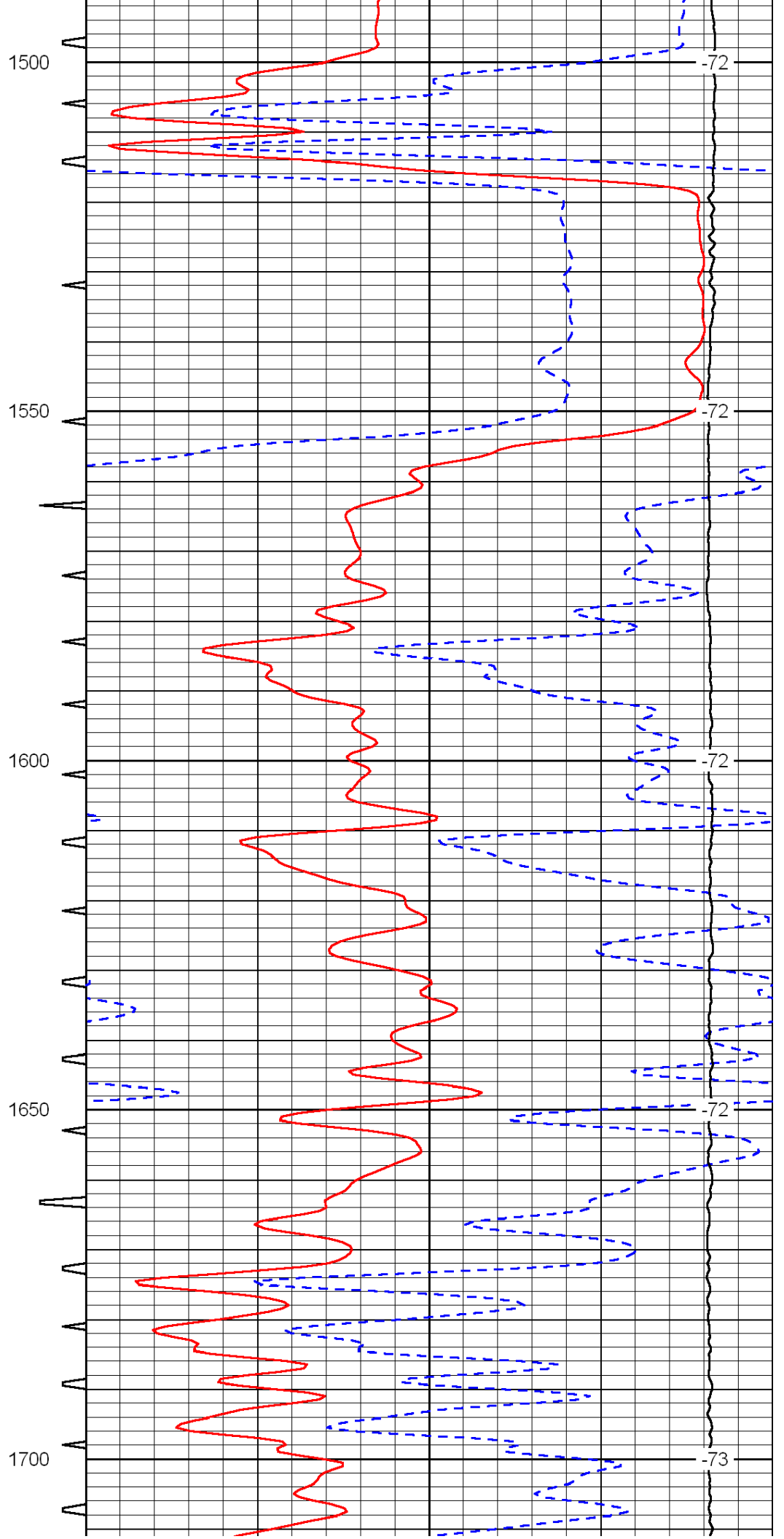
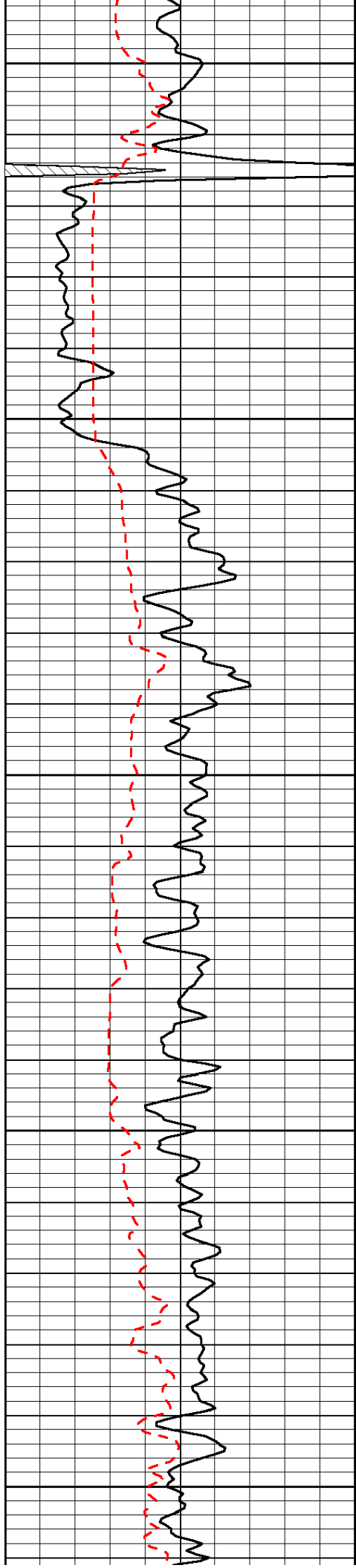


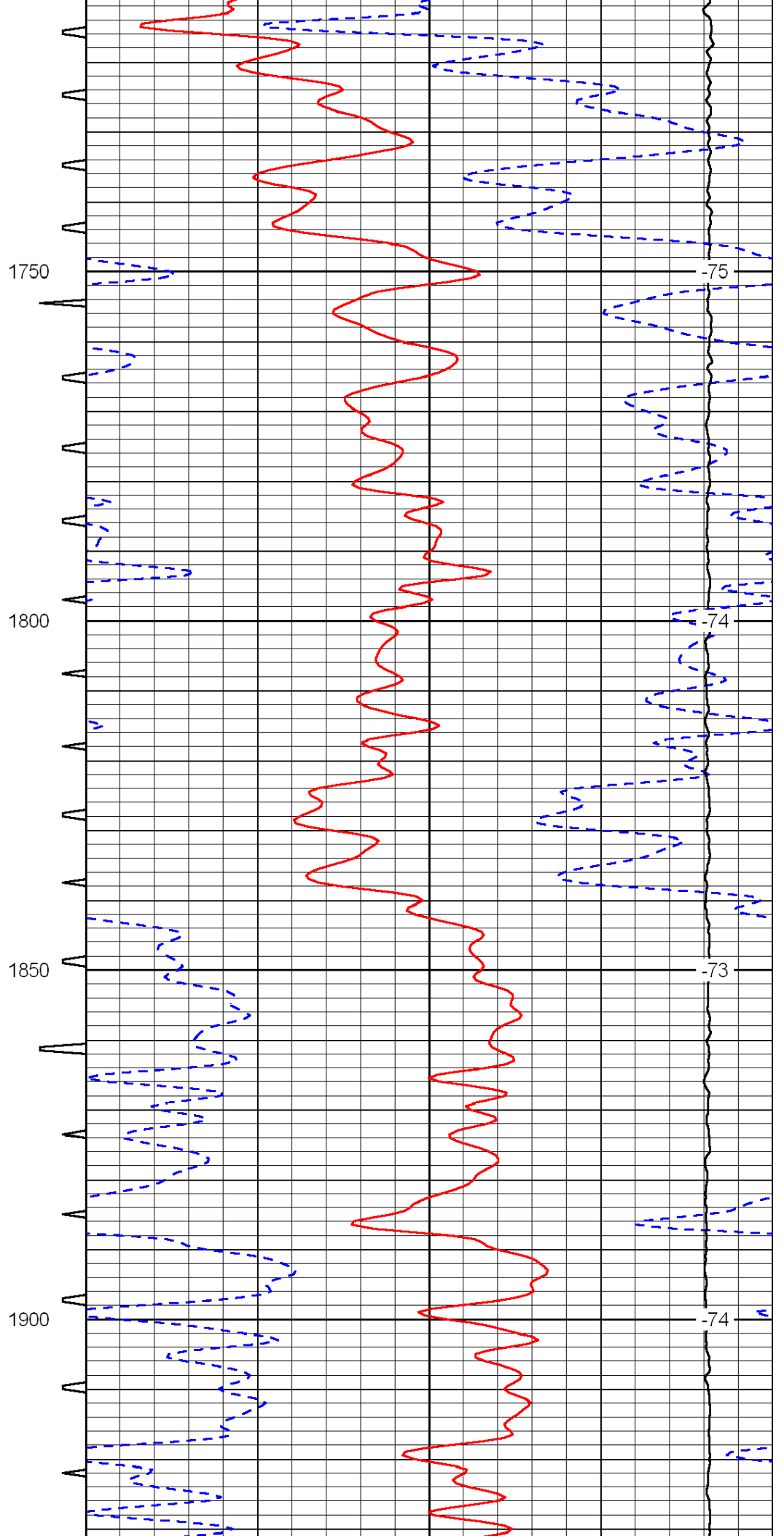
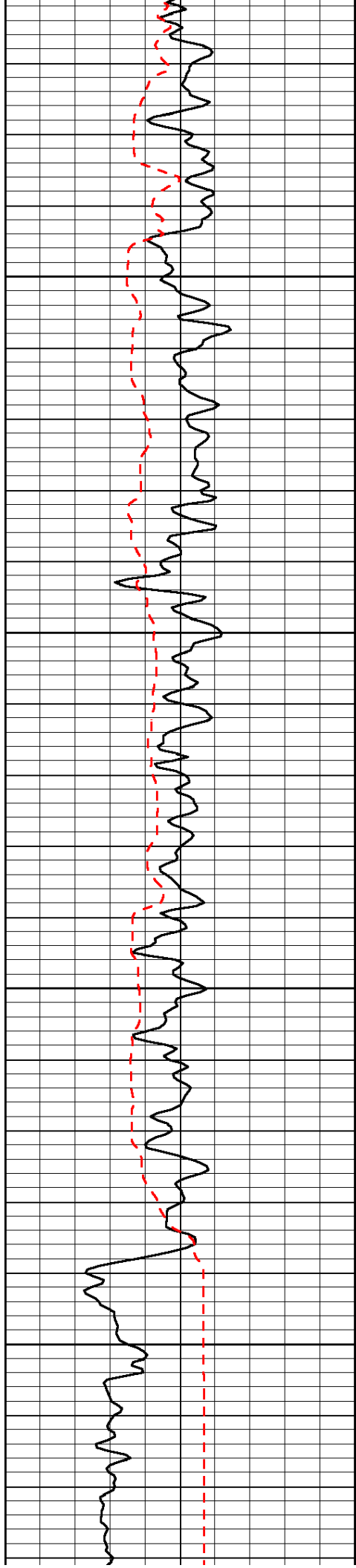


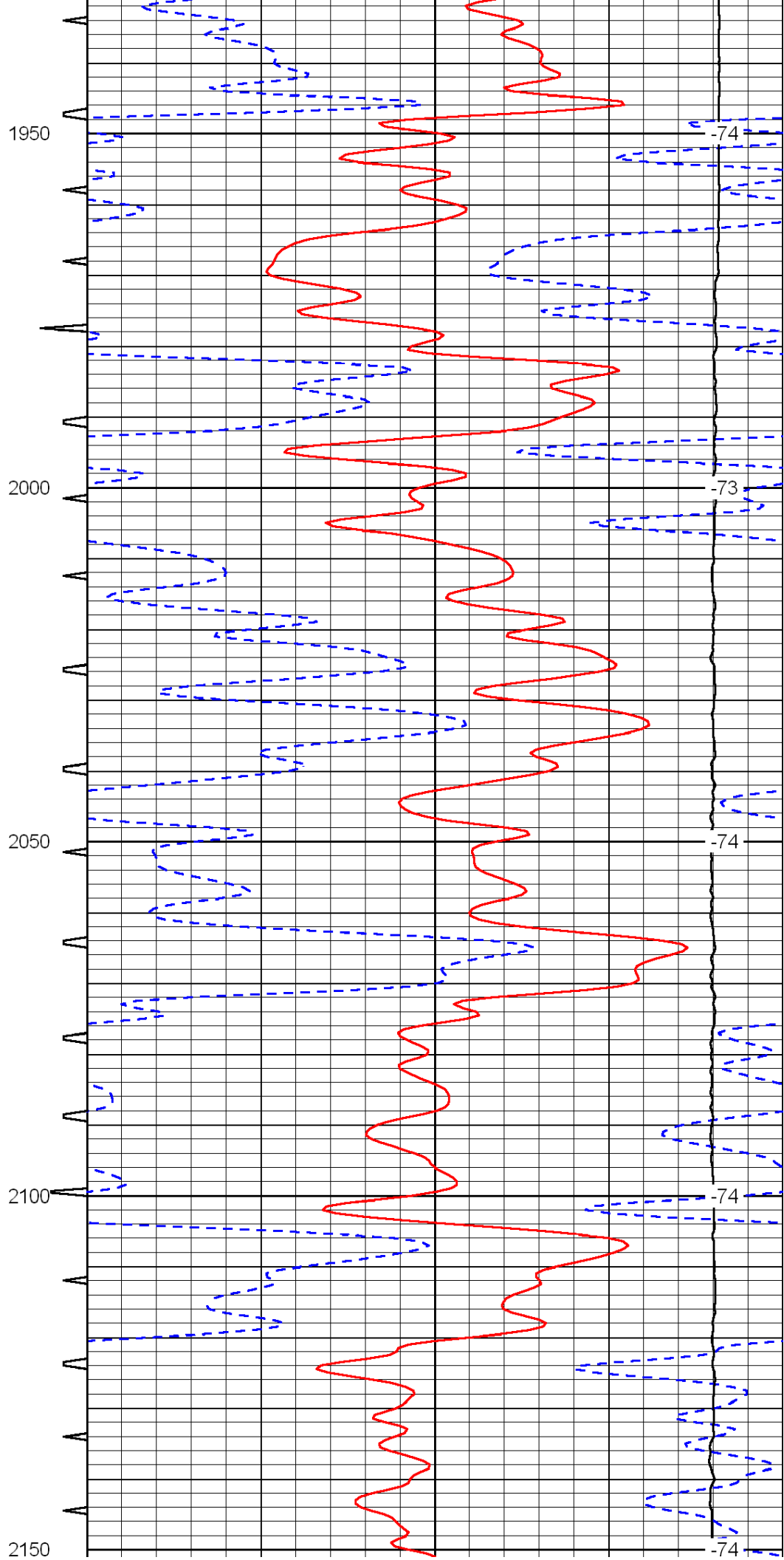
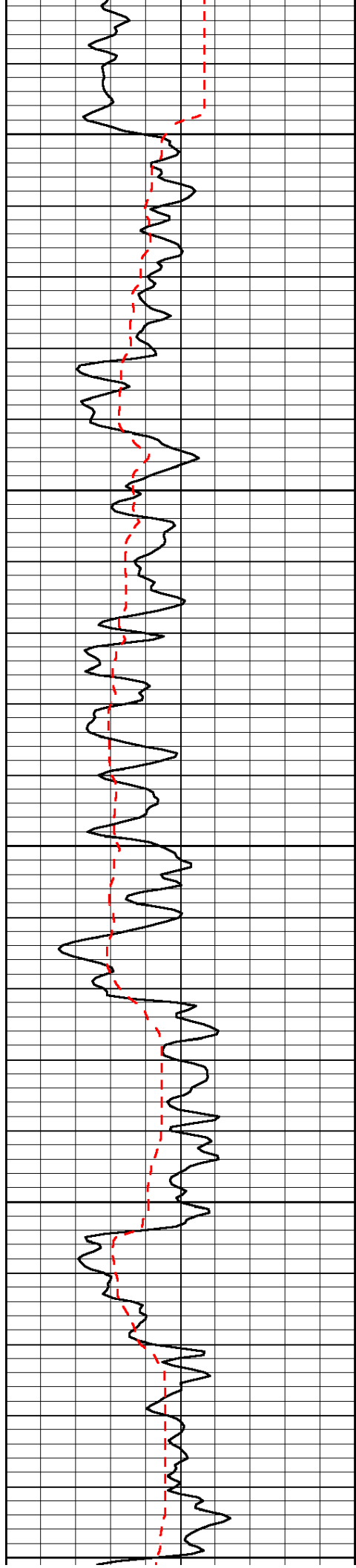


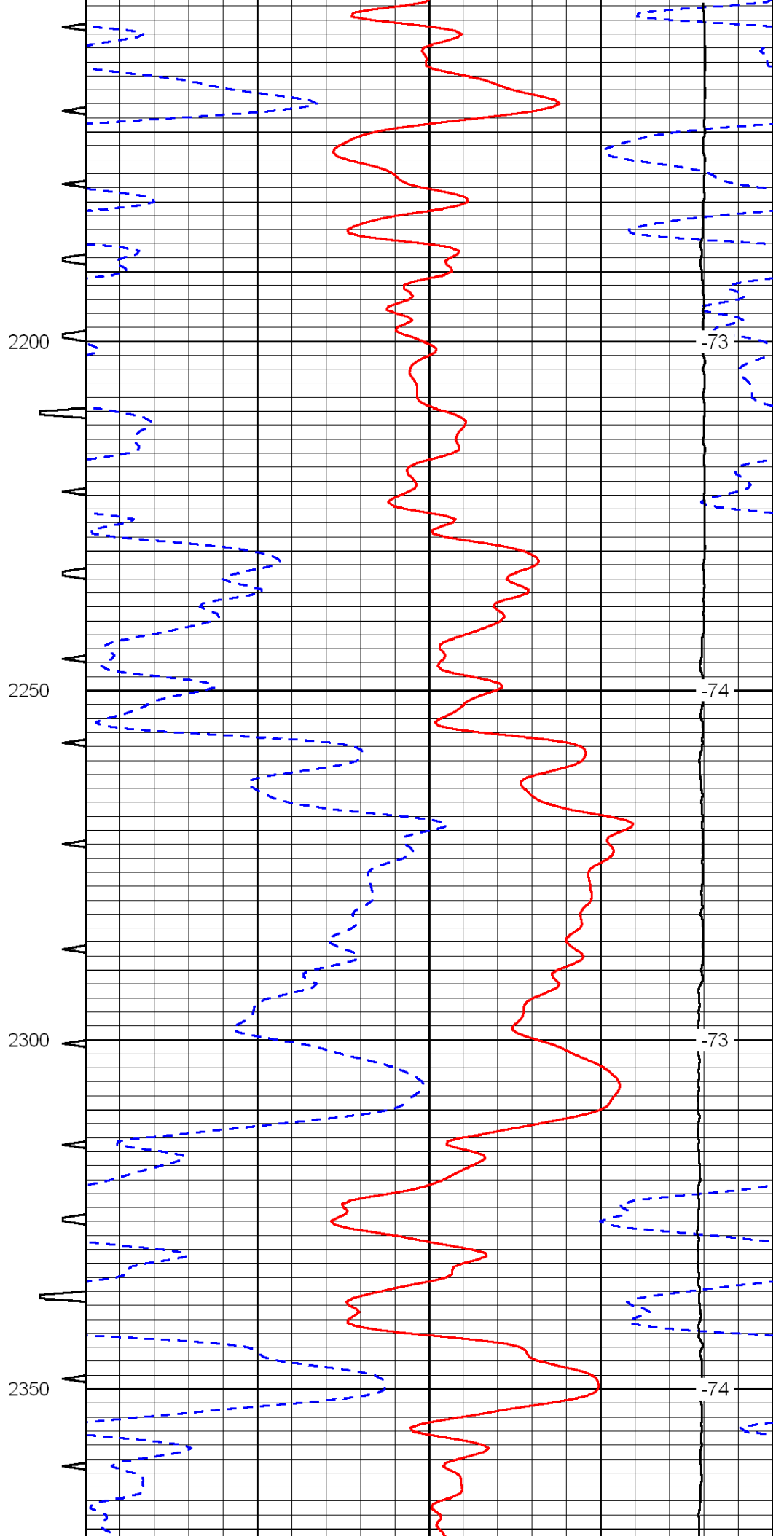
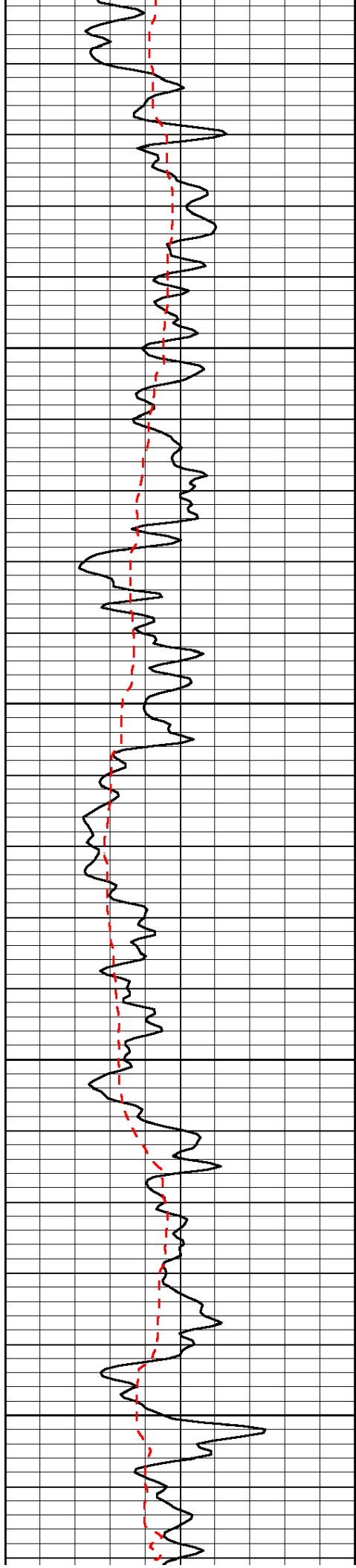


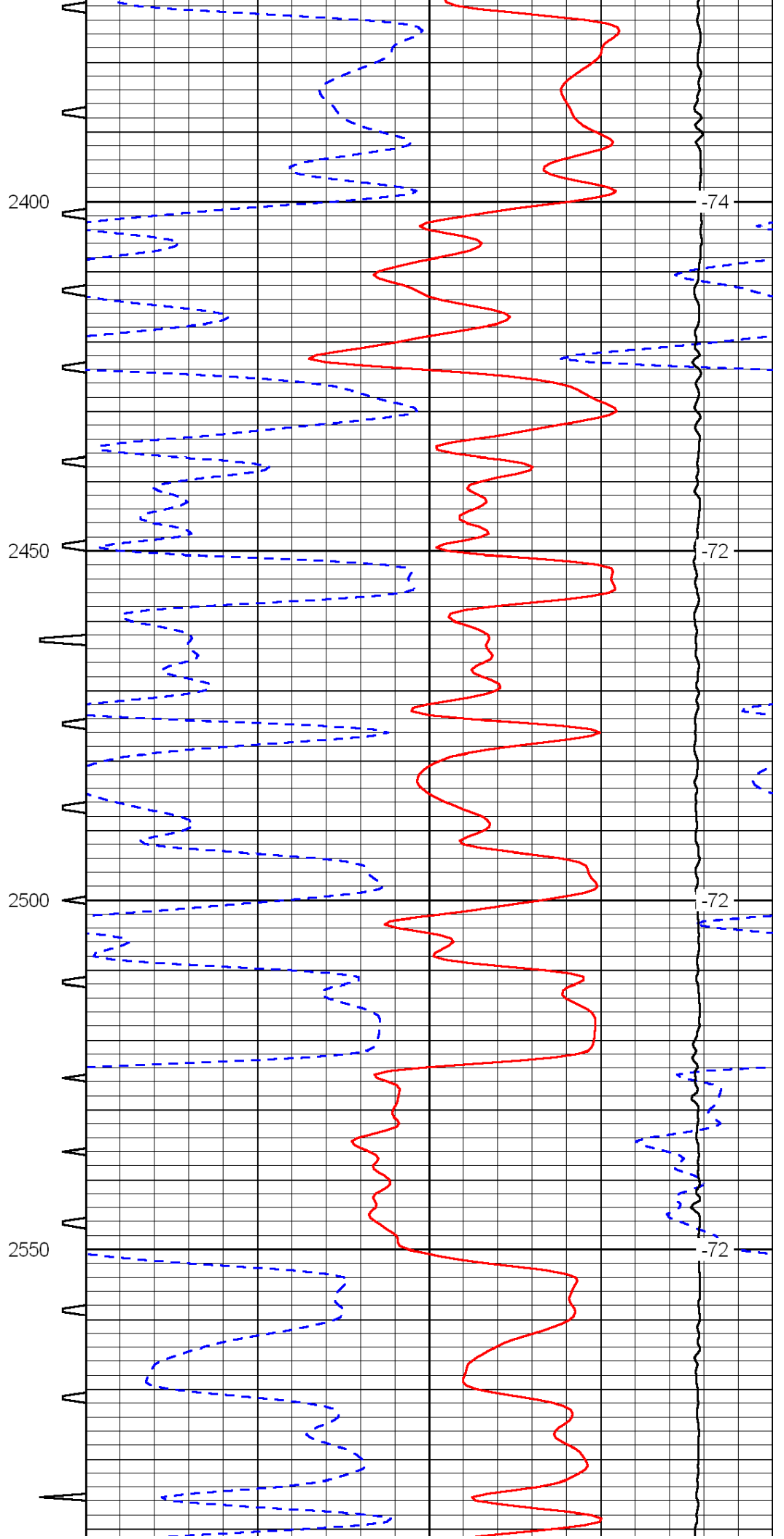
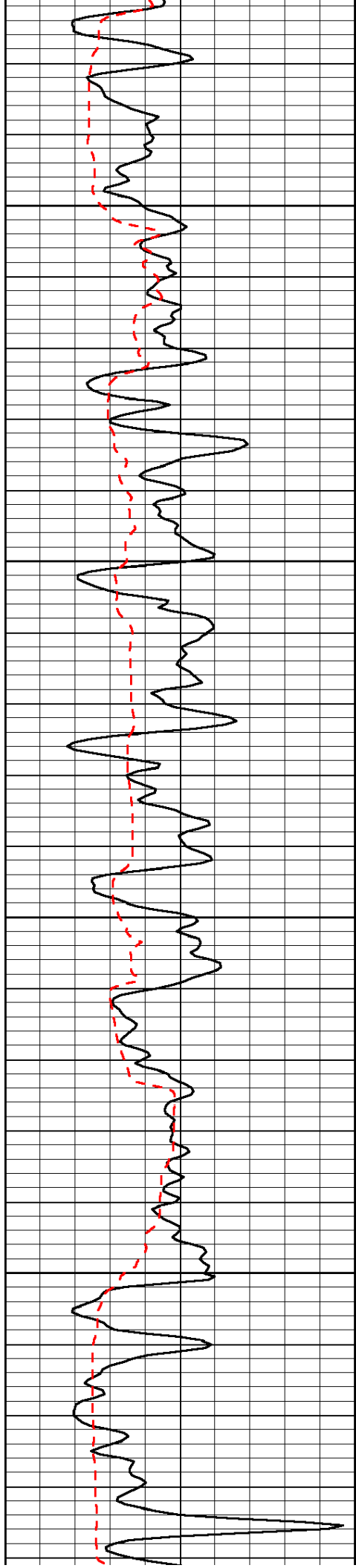


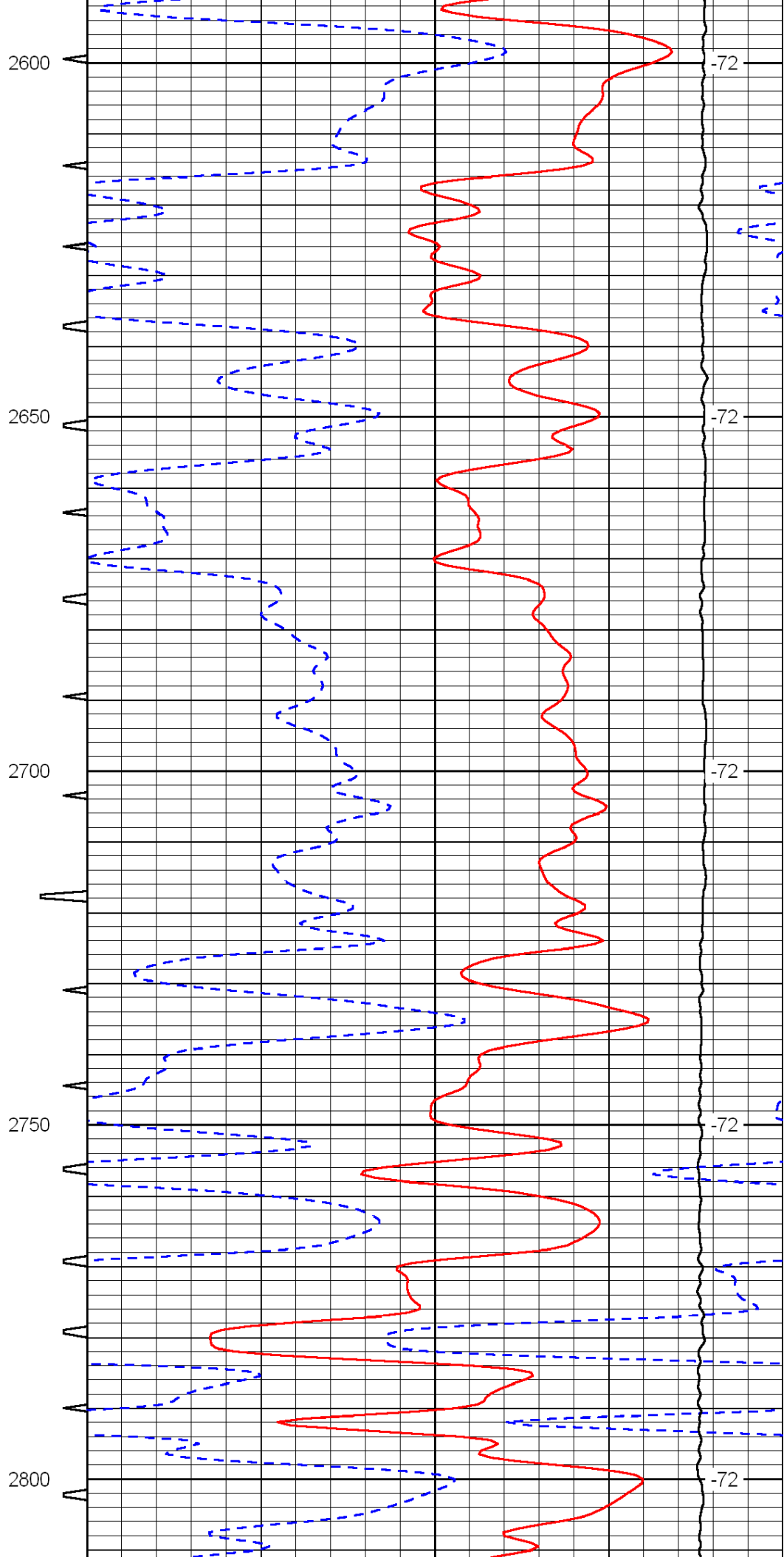
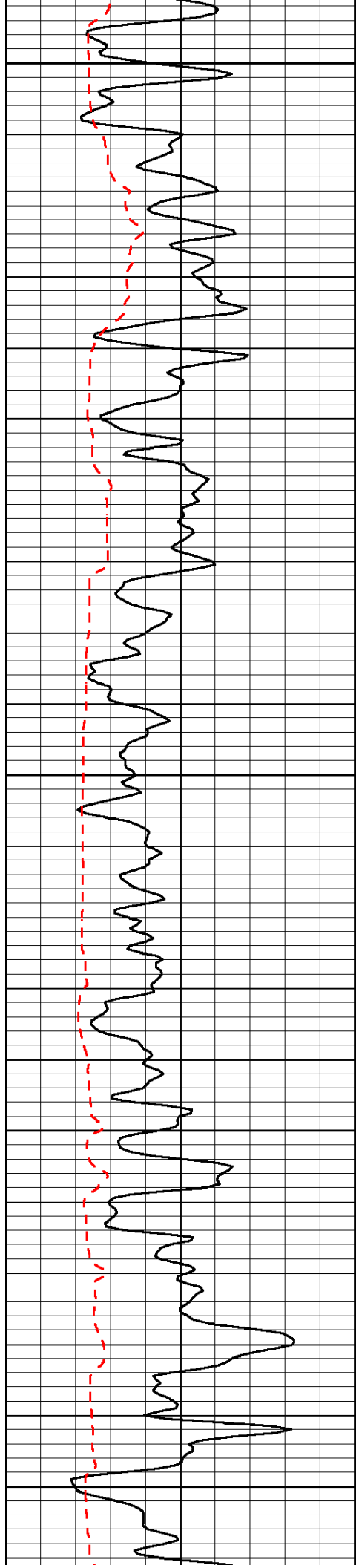


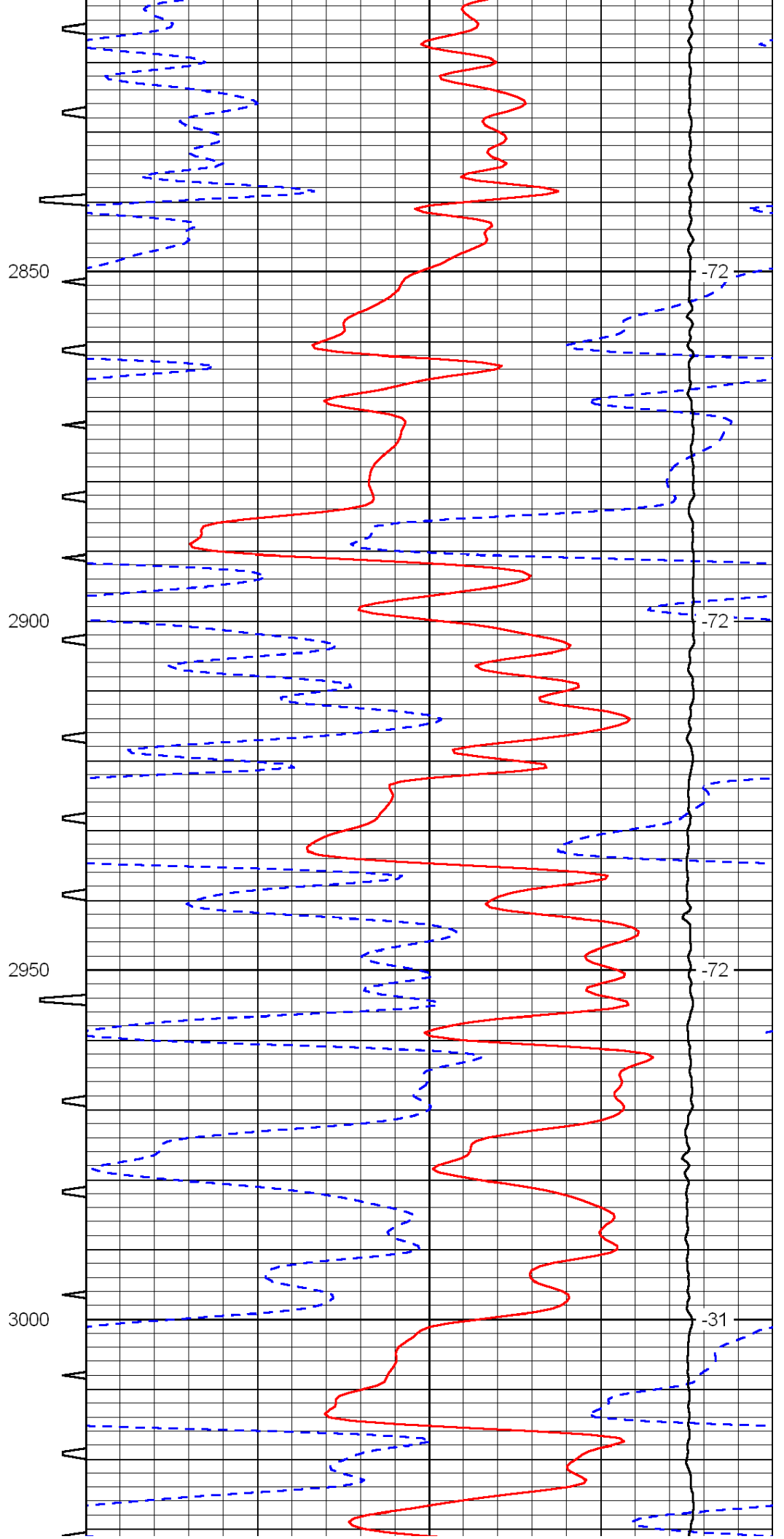
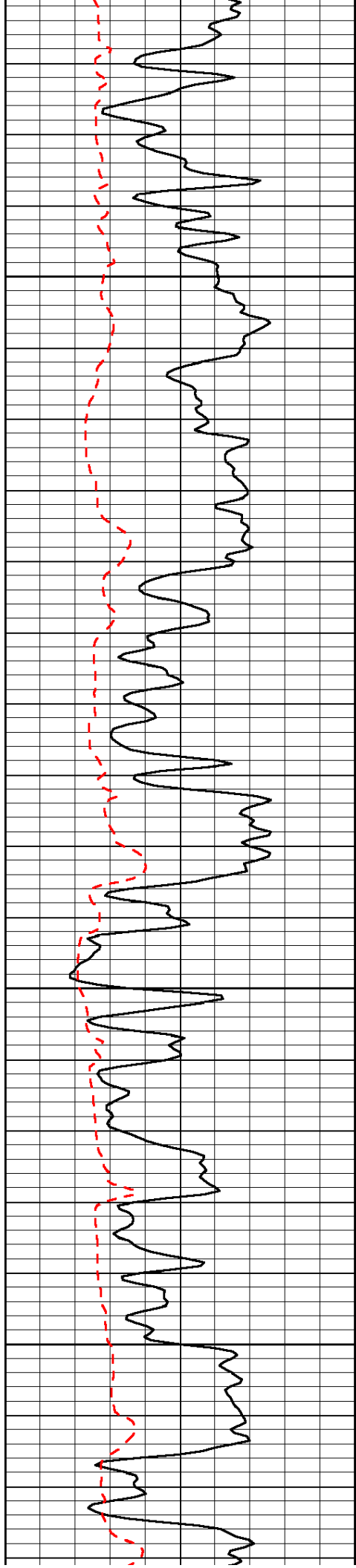


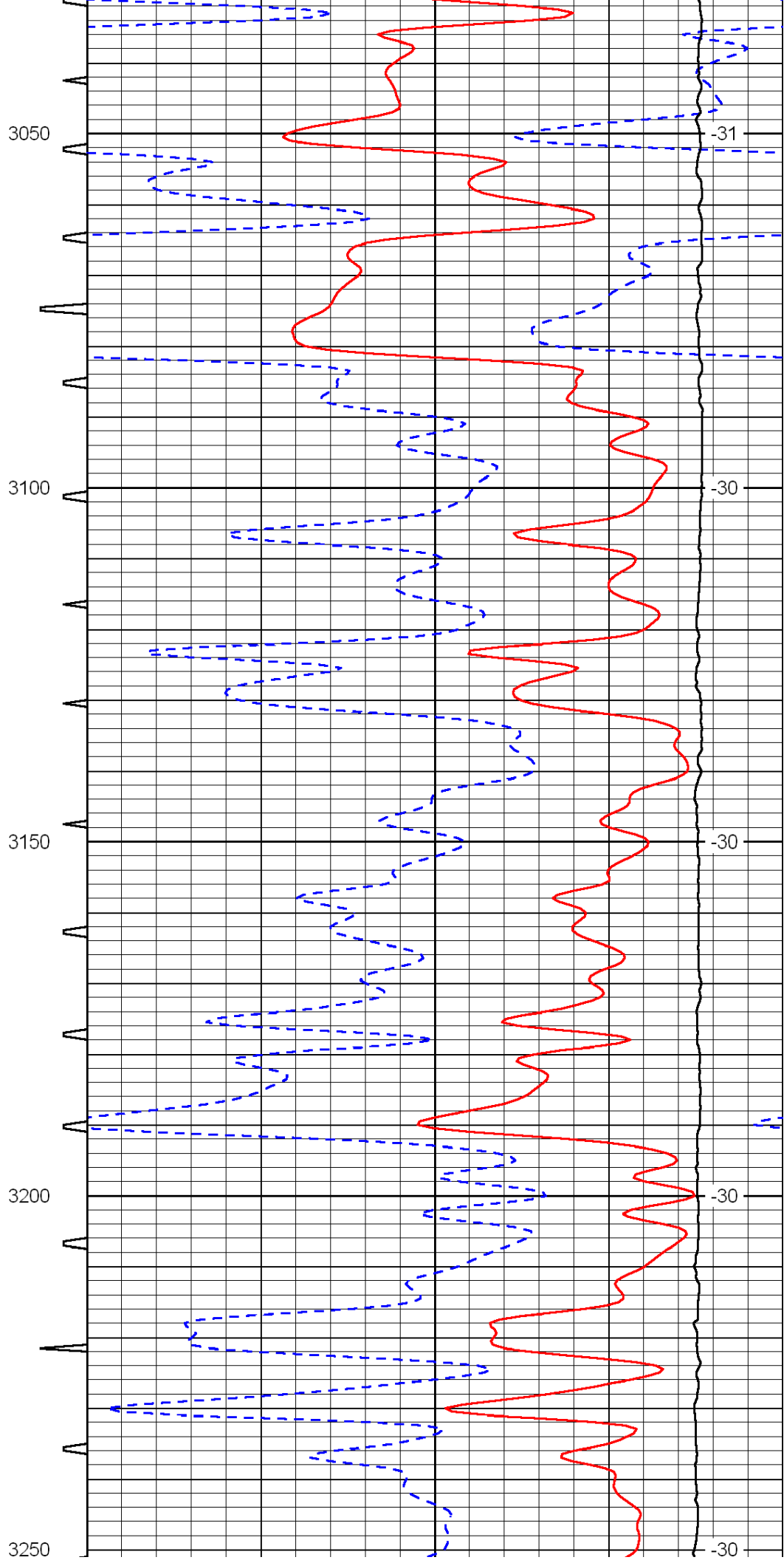
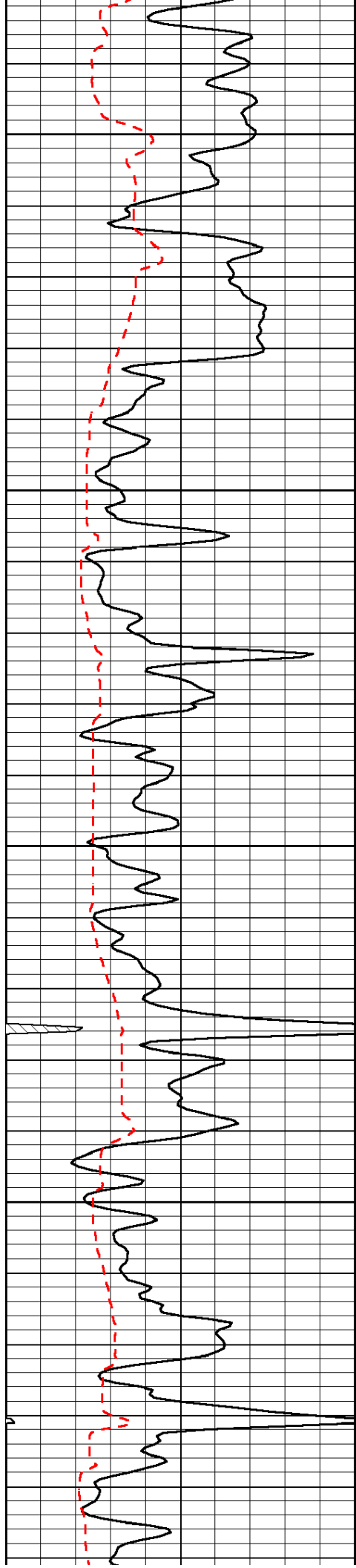


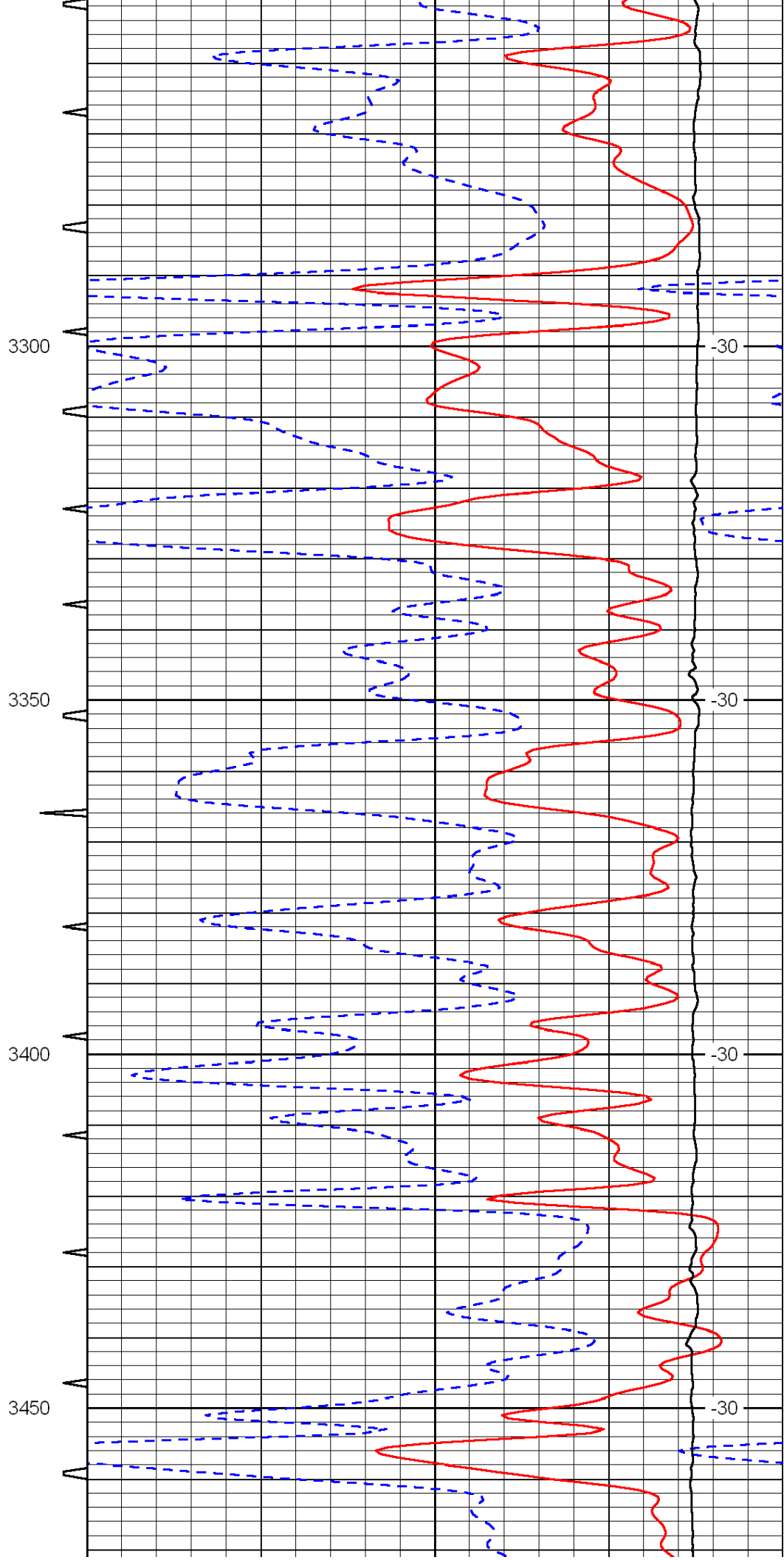
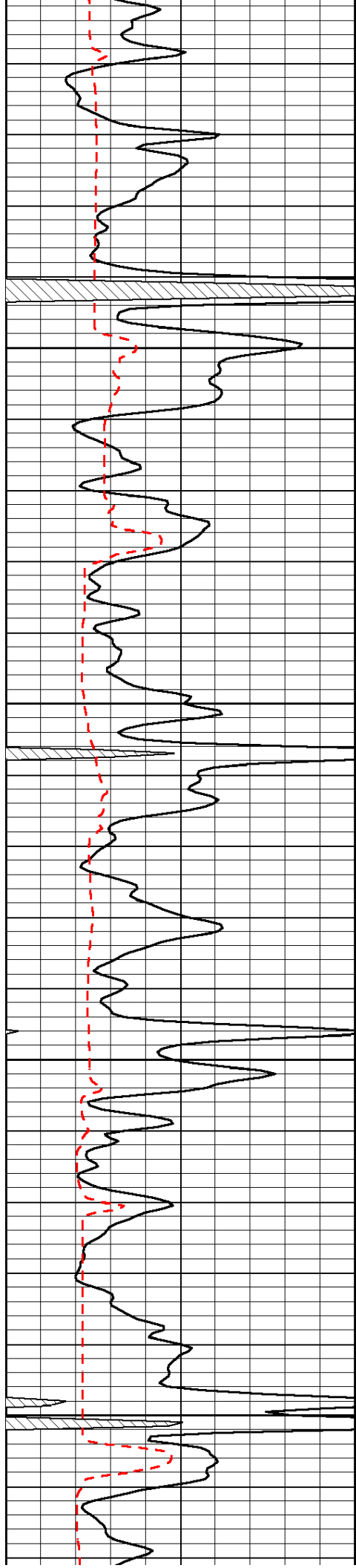


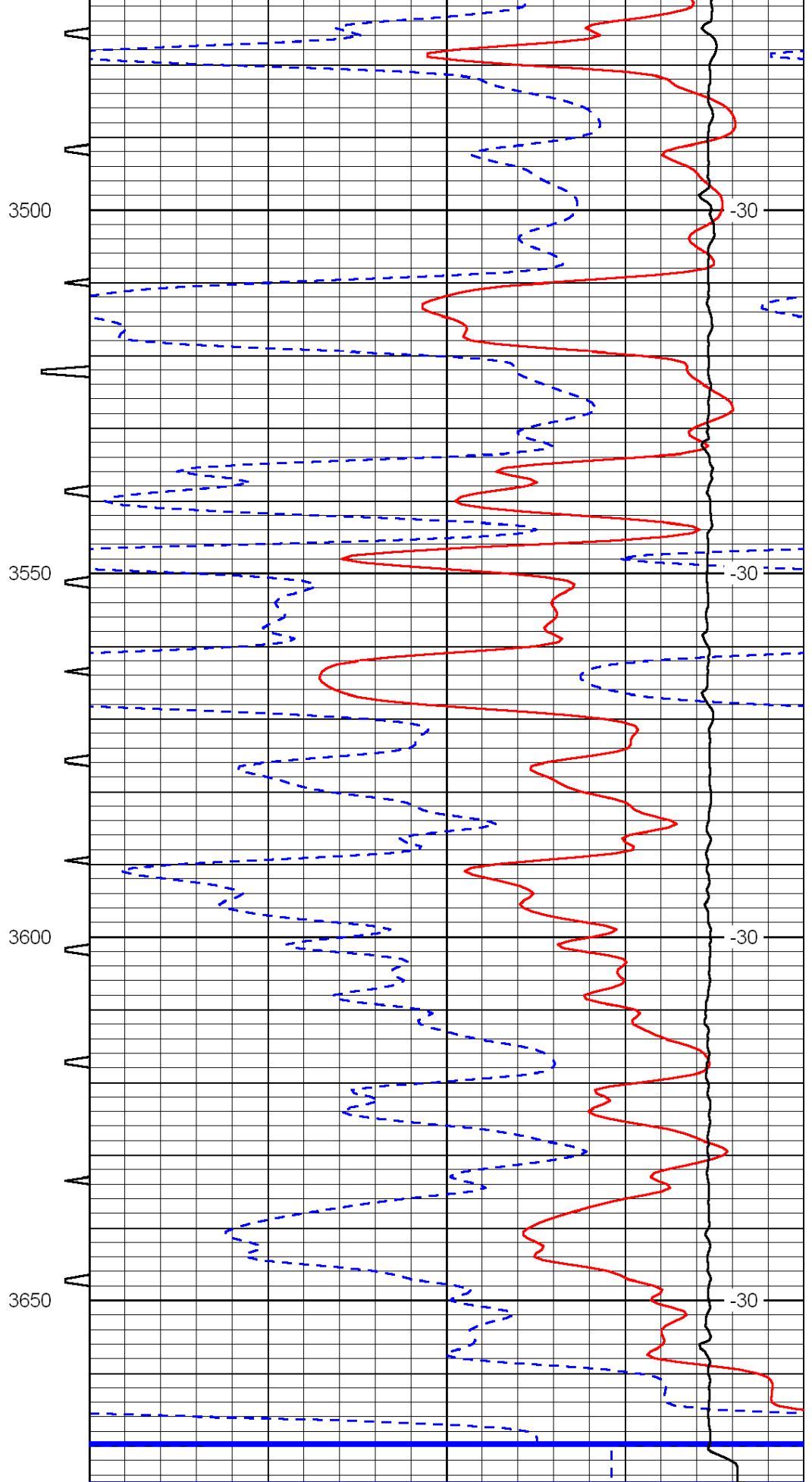
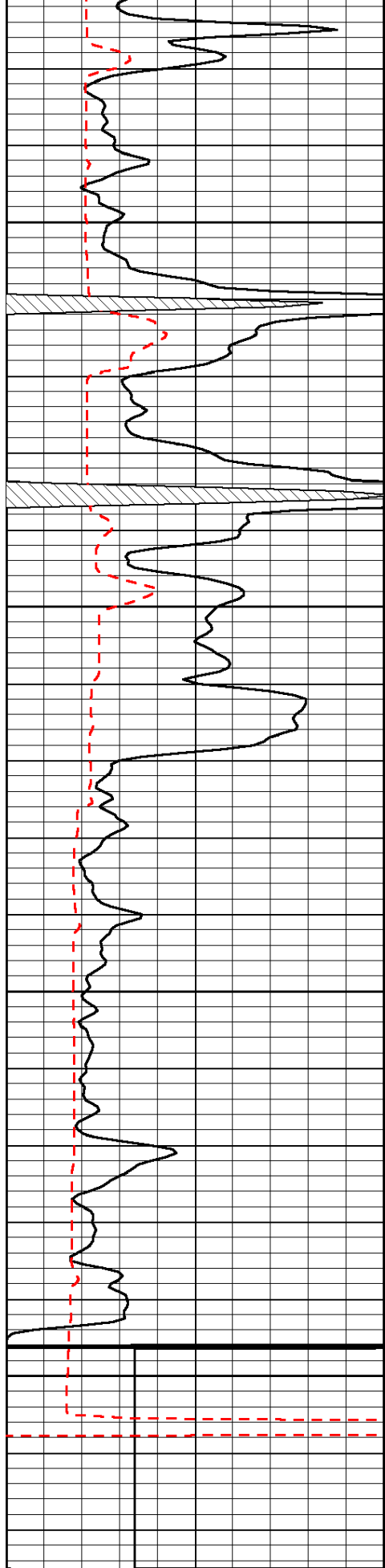












| | | | | | | |
|-----|----------------|-----|-----------|-------|----------------------|-----|
| 0 | Gamma Ray | 150 | Sonic Int | 140 | Delta Time (usec/ft) | 40 |
| 150 | Gamma Ray | 300 | 5 | 0 | SPOR | -10 |
| 6 | Caliper (GAPI) | 16 | | 15000 | LTEN (lb) | 0 |

