



**DIGITAL LOG** (785) 625-3858

Dual Induction Log

API No. 15-035-24424-00-00

Company Range Oil Company, Inc.  
 Well Page #1  
 Field Estep North  
 County Cowley State Kansas

Location W/2 SE NW  
 1980' FNL / 1650' FWL

Other Services  
 CNL / CDL

Permanent Datum Ground Level  
 Log Measured From Kelly Bushing 10 Ft. Above Perm. Datum  
 Drilling Measured From Kelly Bushing

Sec: 21 Twp: 34S Rge: 6E

Elevation  
 K.B. 1325  
 D.F. 1315  
 G.L. 1315

Date	6/22/2011
Run Number	One
Depth Driller	3180
Depth Logger	3180
Bottom Logged Interval	3179
Top Log Interval	300
Casing Driller	8.625 @ 317
Casing Logger	317
Bit Size	7.875
Type Fluid in Hole	Chemical
Salinity, ppm CL	800
Density / Viscosity	9.3 76
pH / Fluid Loss	9.0 8.2
Source of Sample	Flowline
Rm @ Meas. Temp	2.10 @ 85
Rmf @ Meas. Temp	1.58 @ 85
Rmc @ Meas. Temp	2.84 @ 85
Source of Rmf / Rmc	Charts
Rm @ BHT	1.66 @ 108
Operating Rig Time	3 Hours
Max Rec. Temp. F	108
Equipment Number	15
Location	Hays
Recorded By	R. Barnhart
Witnessed By	Frank Mize

<<< Fold Here >>>

All interpretations are opinions based on inferences from electrical or other measurements and we cannot and do not guarantee the accuracy or correctness of any interpretation, and we shall not, except in the case of gross or willful negligence on our part, be liable or responsible for any loss, costs, damages, or expenses incurred or sustained by anyone resulting from any interpretation made by any of our officers, agents or employees. These interpretations are also subject to our general terms and conditions set out in our current Price Schedule.

Comments

Thank you for using Log-Tech, Inc.  
 (785) 625-3858

Ark City, KS:  
 From Roundabout: 14E on 166 to Rd. 211,  
 2 1/2S, W into

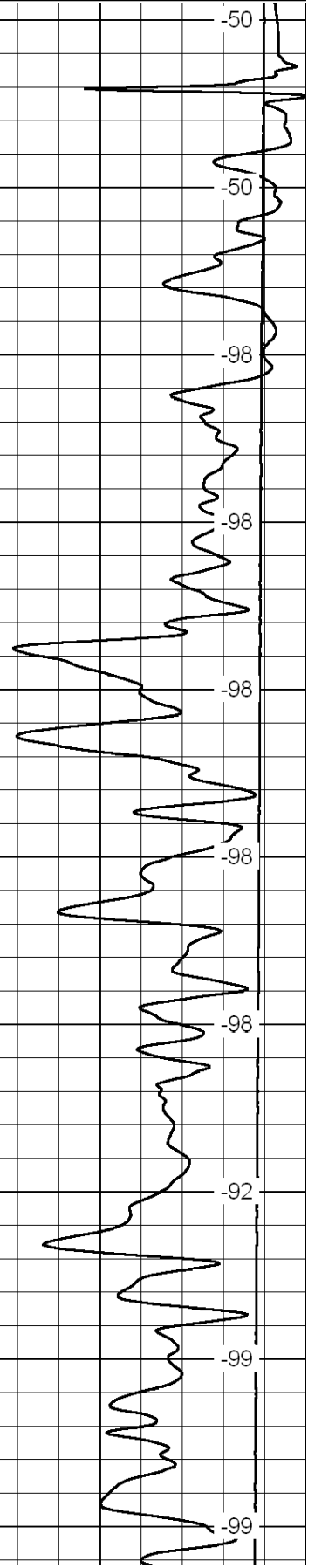
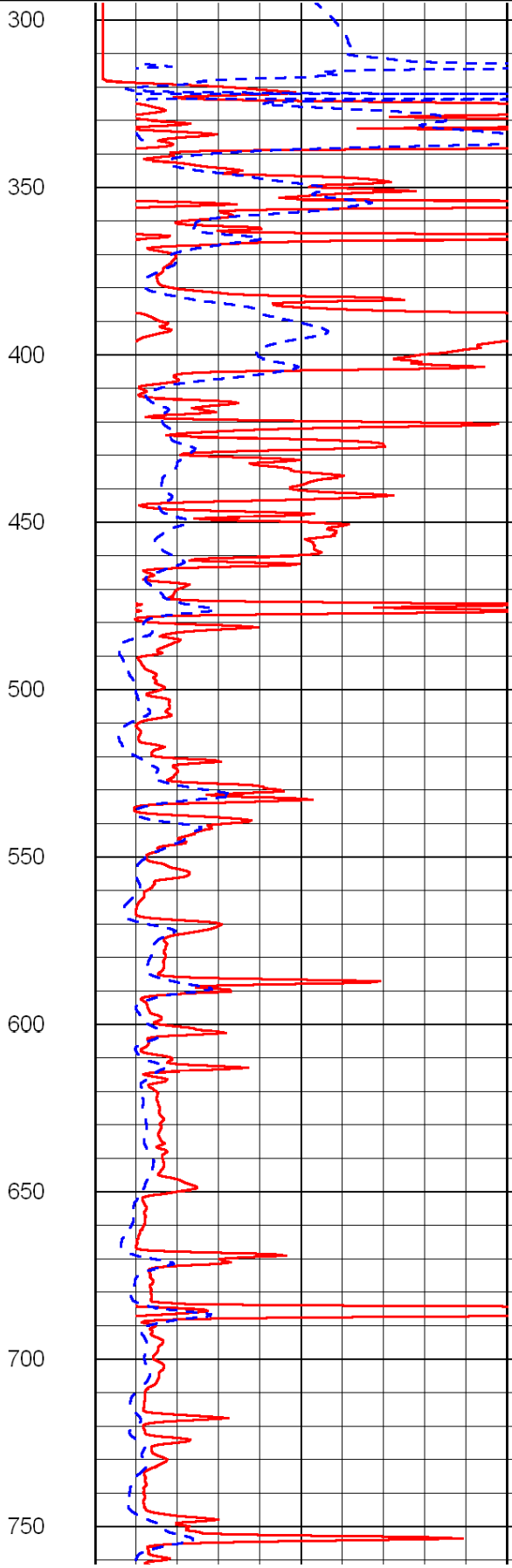
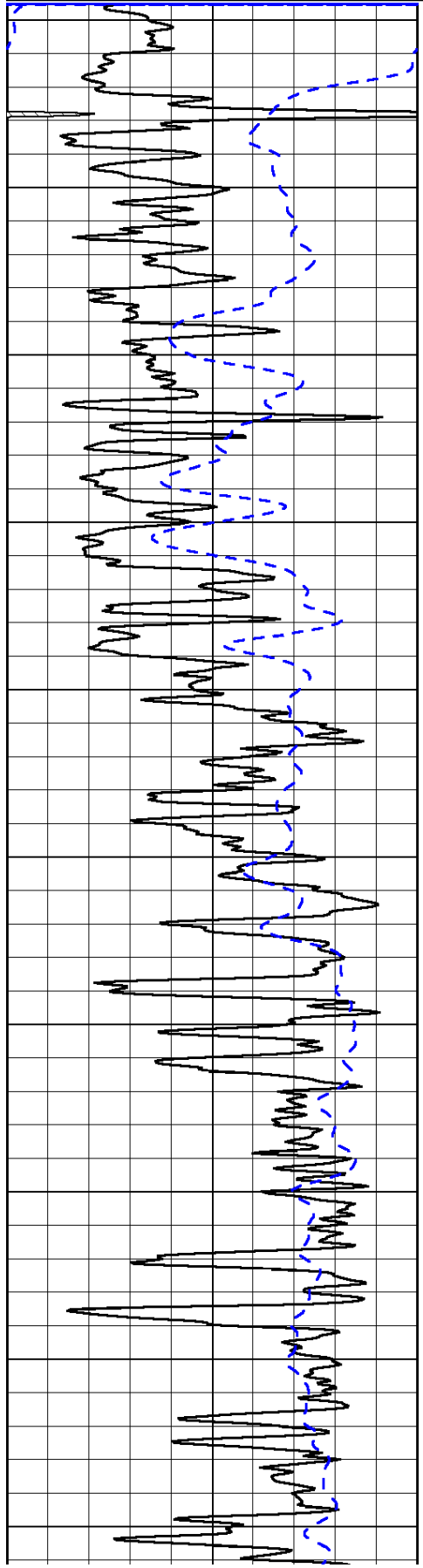
0	Gamma Ray	150
-200	SP (mV)	0

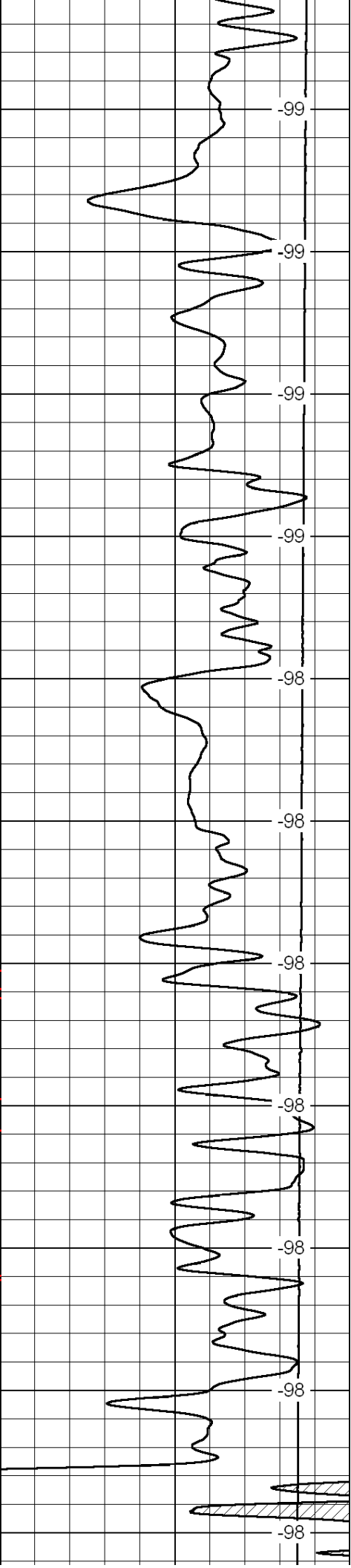
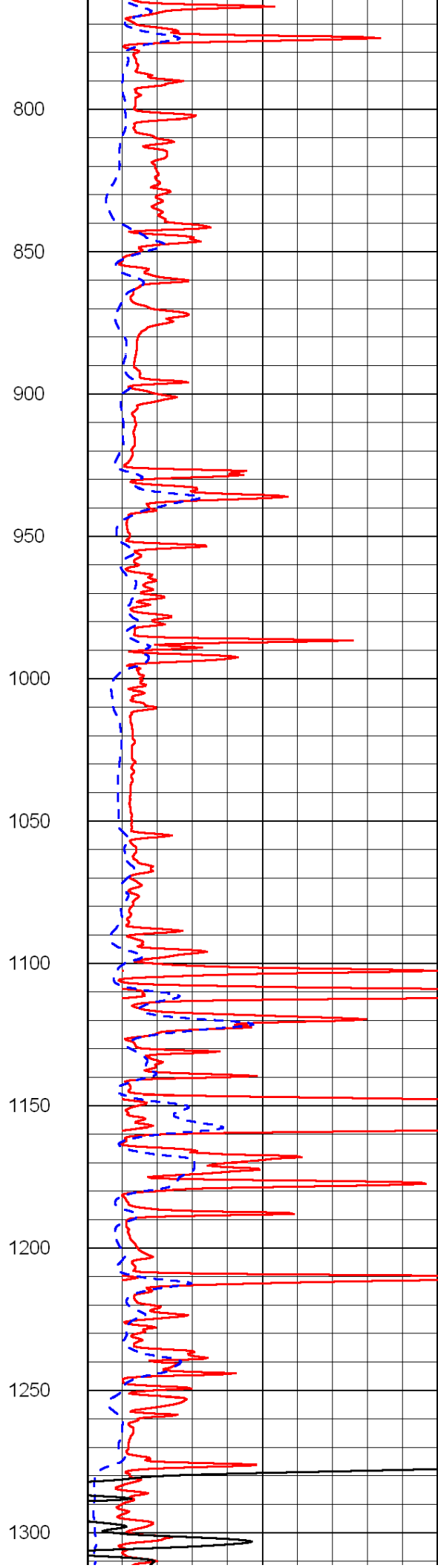
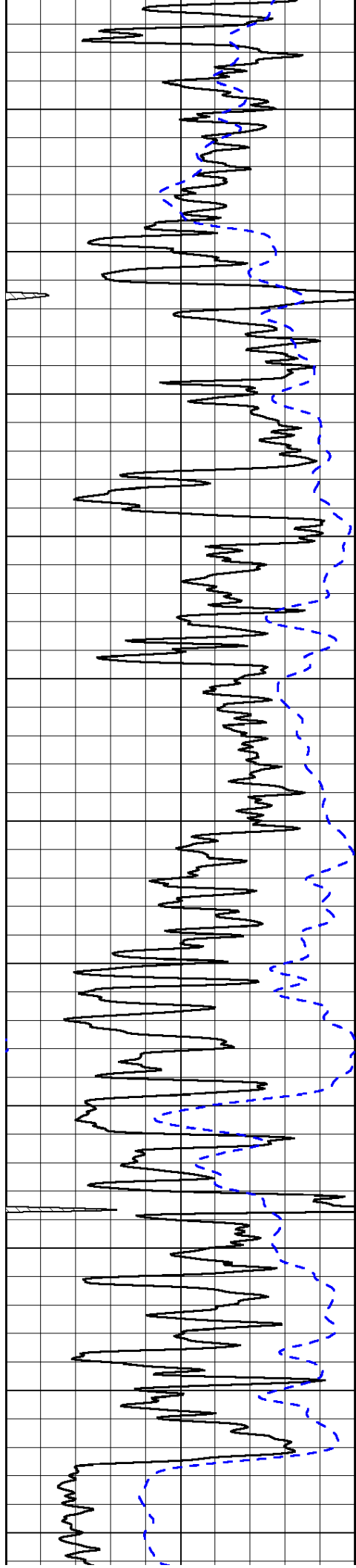
0	Shallow Resistivity	50
0	Deep Resistivity	50

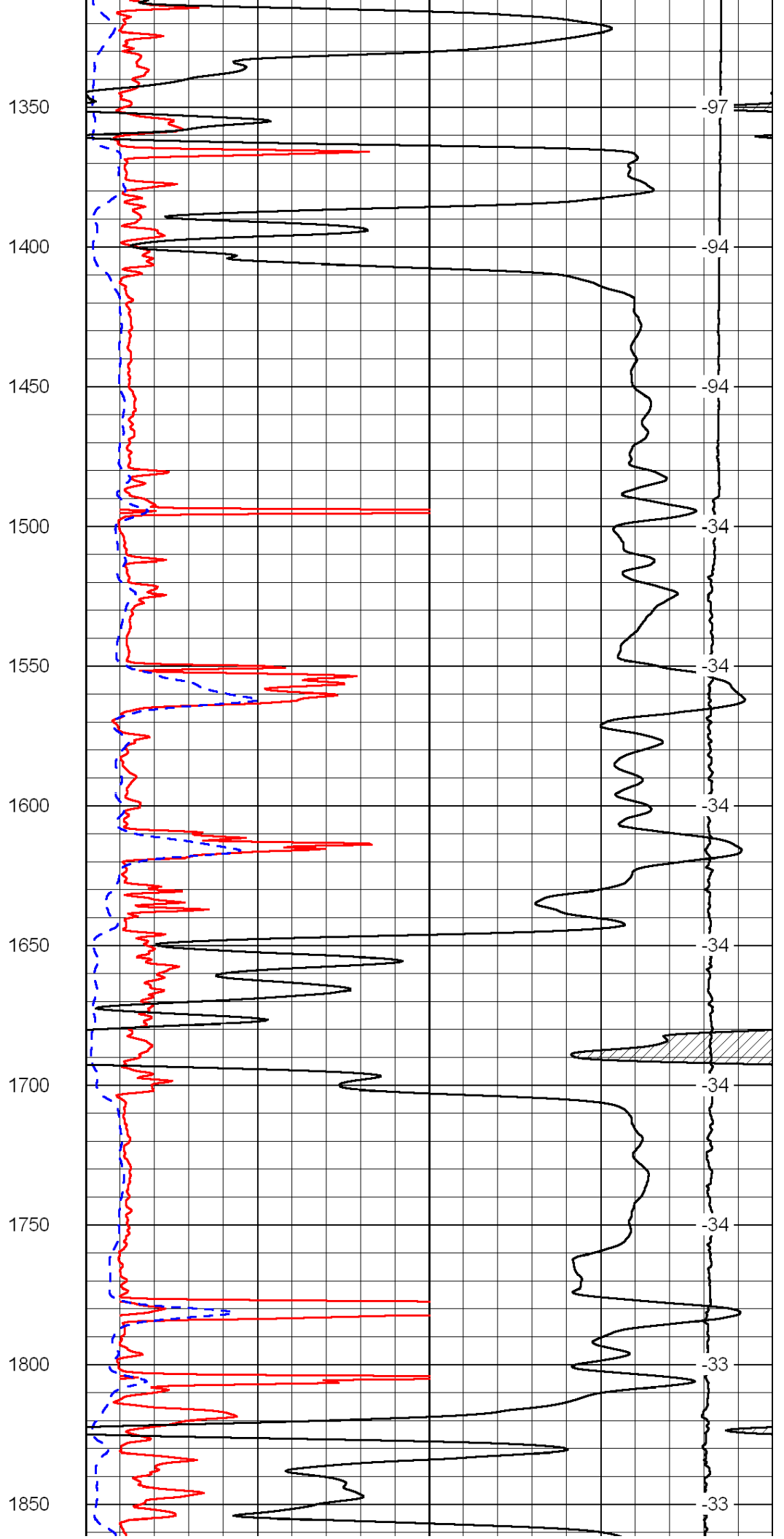
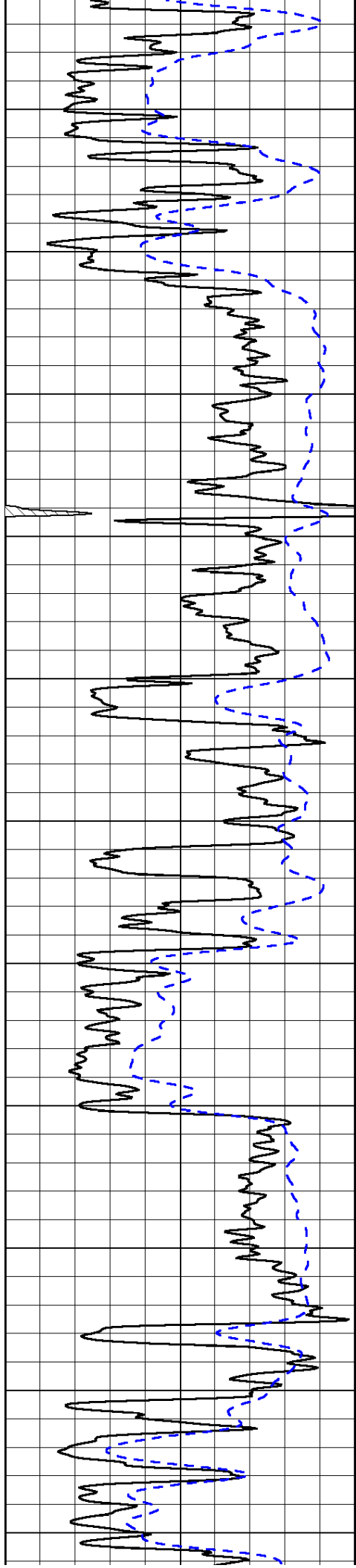
LSPD

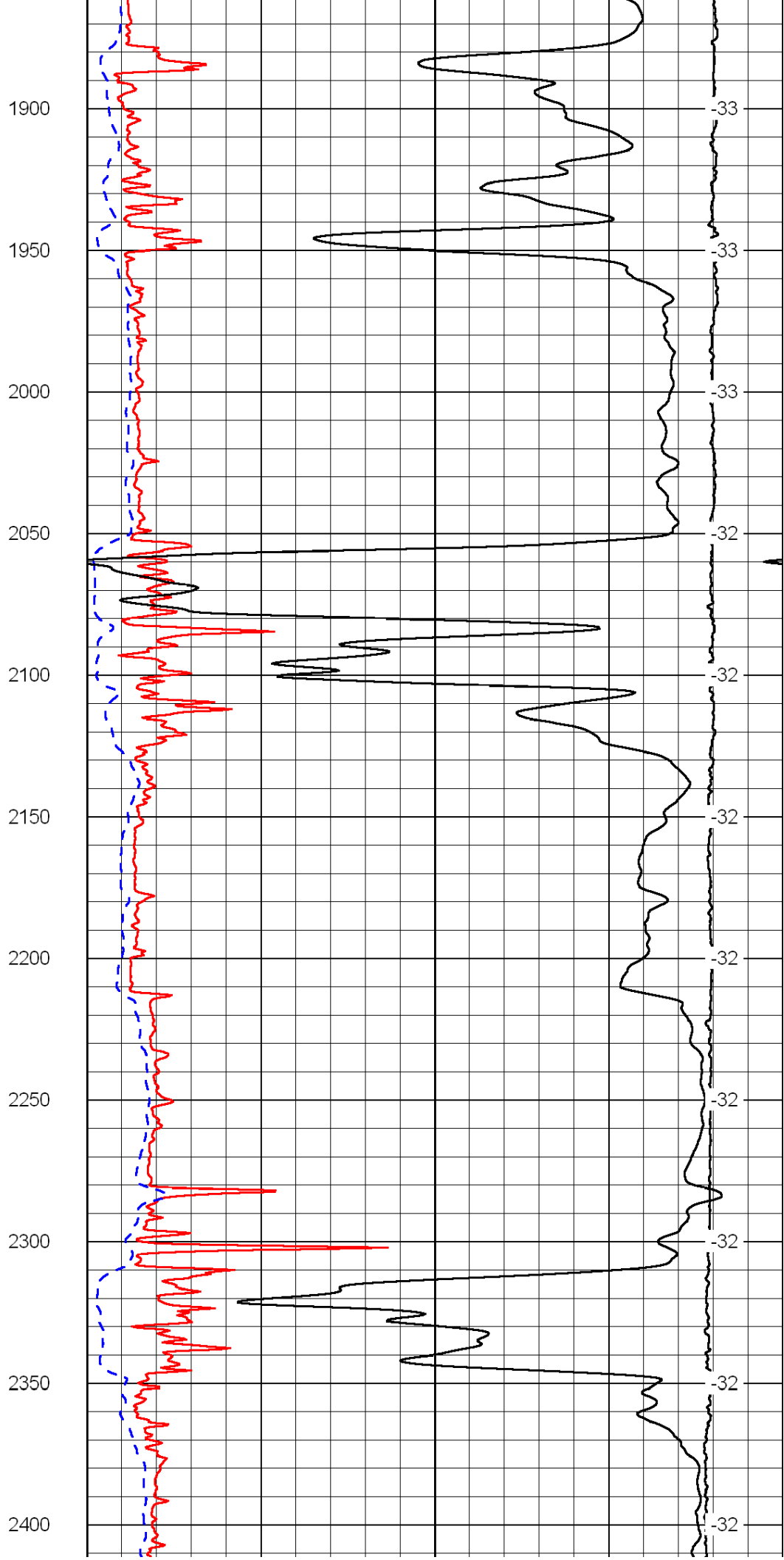
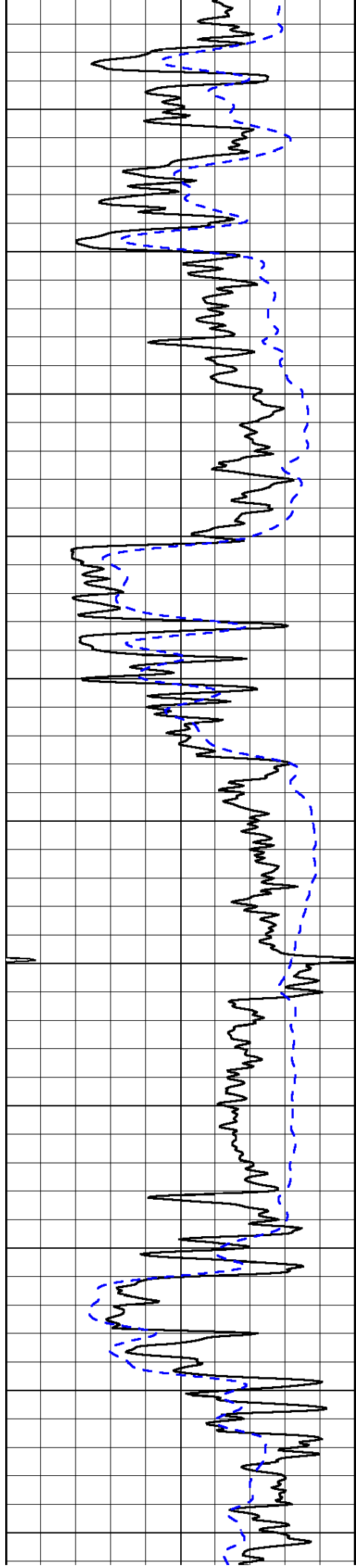
1000	Conductivity	0
15000	Line Tension	0

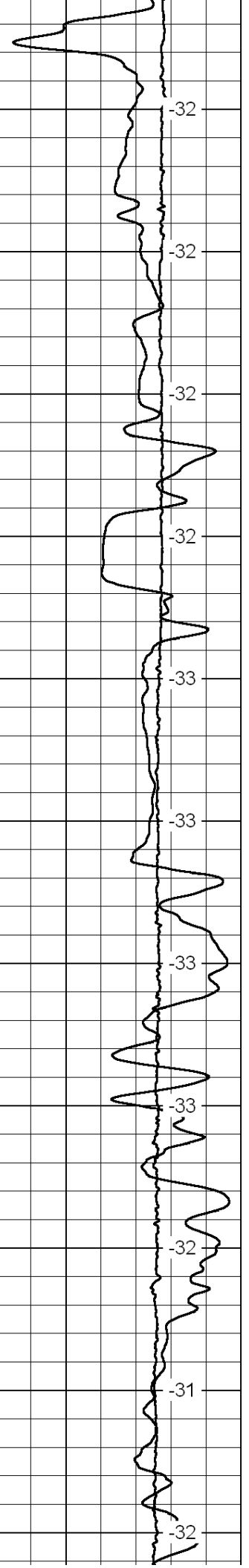
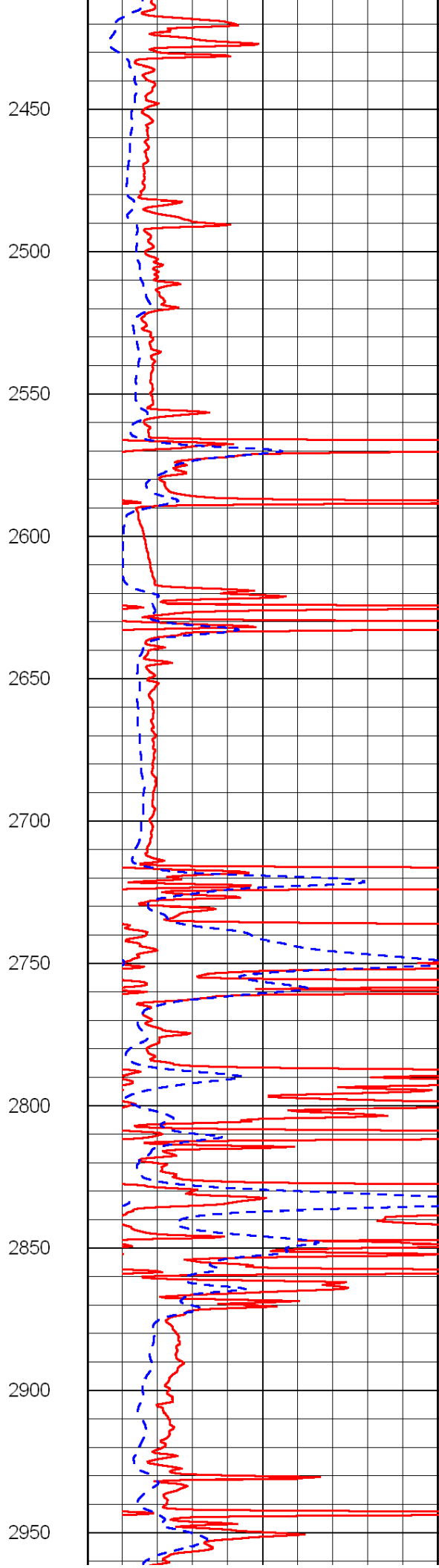
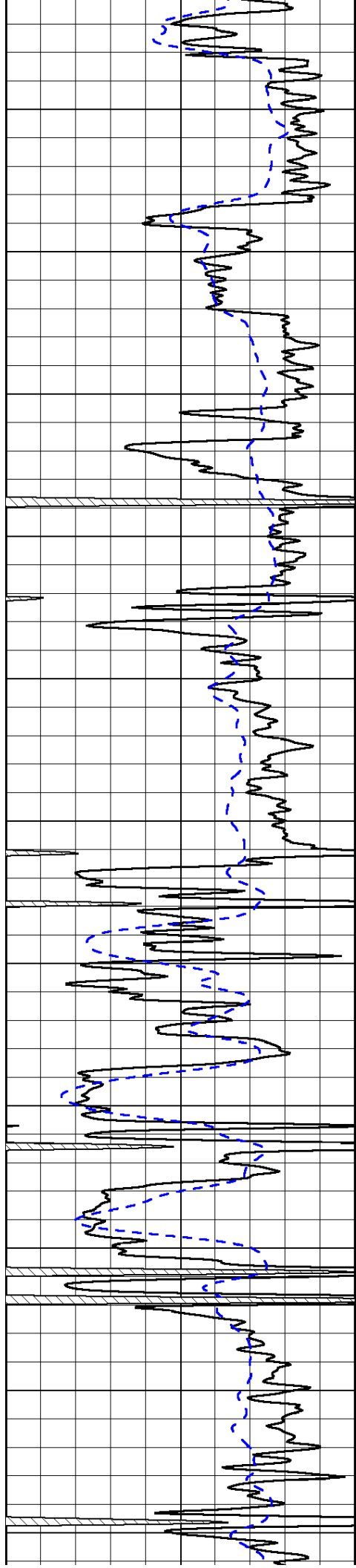
50	Shallow Resistivity	500
50	Deep Resistivity	500

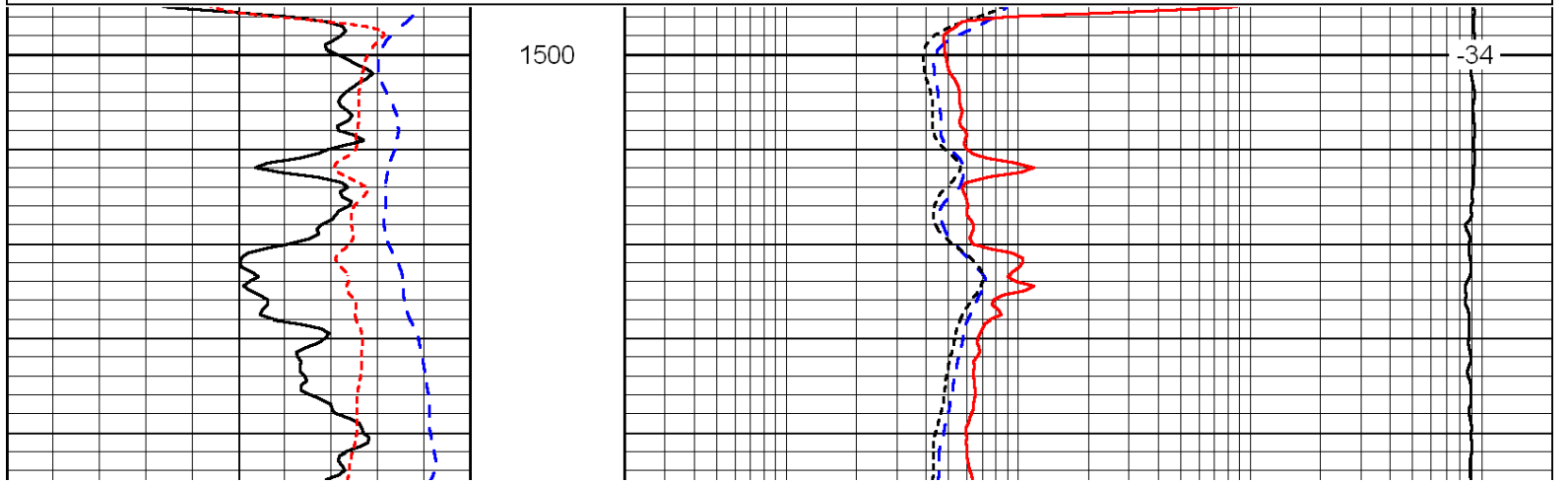
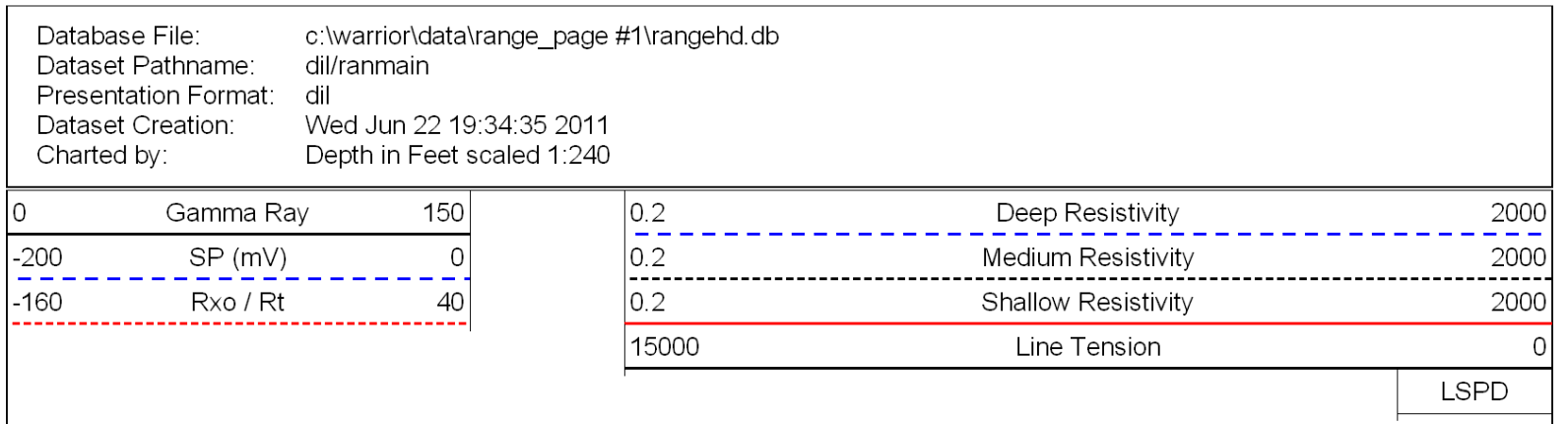
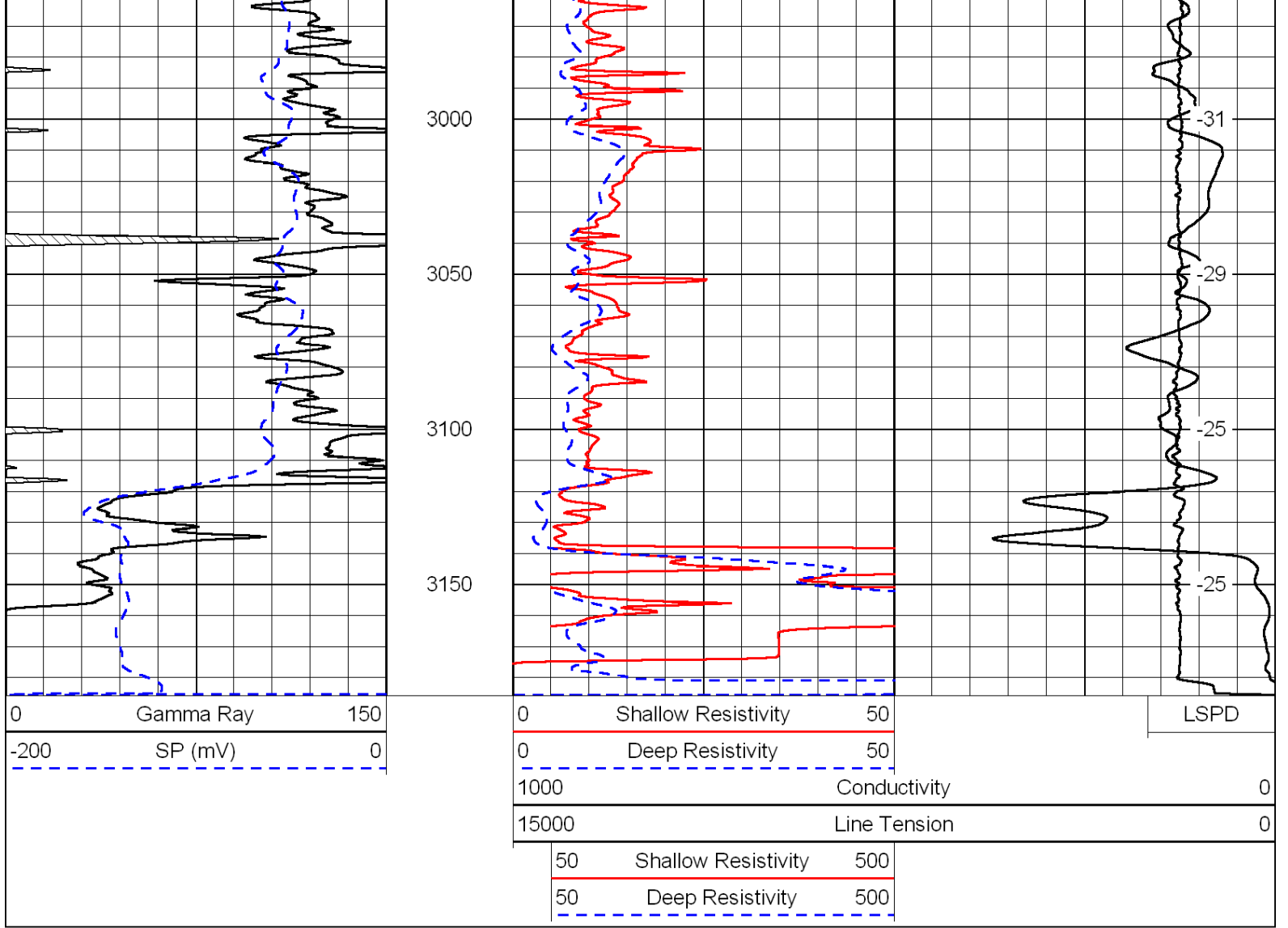


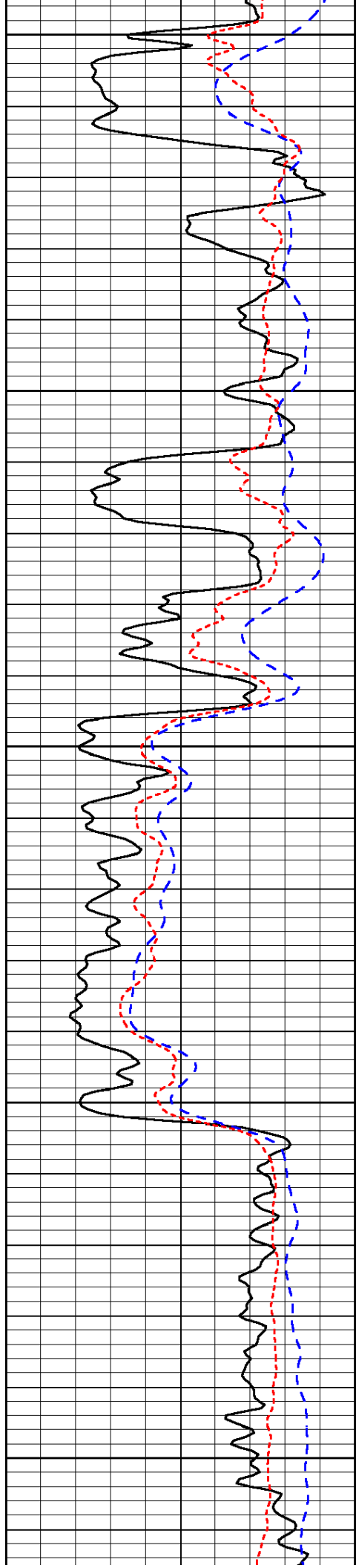












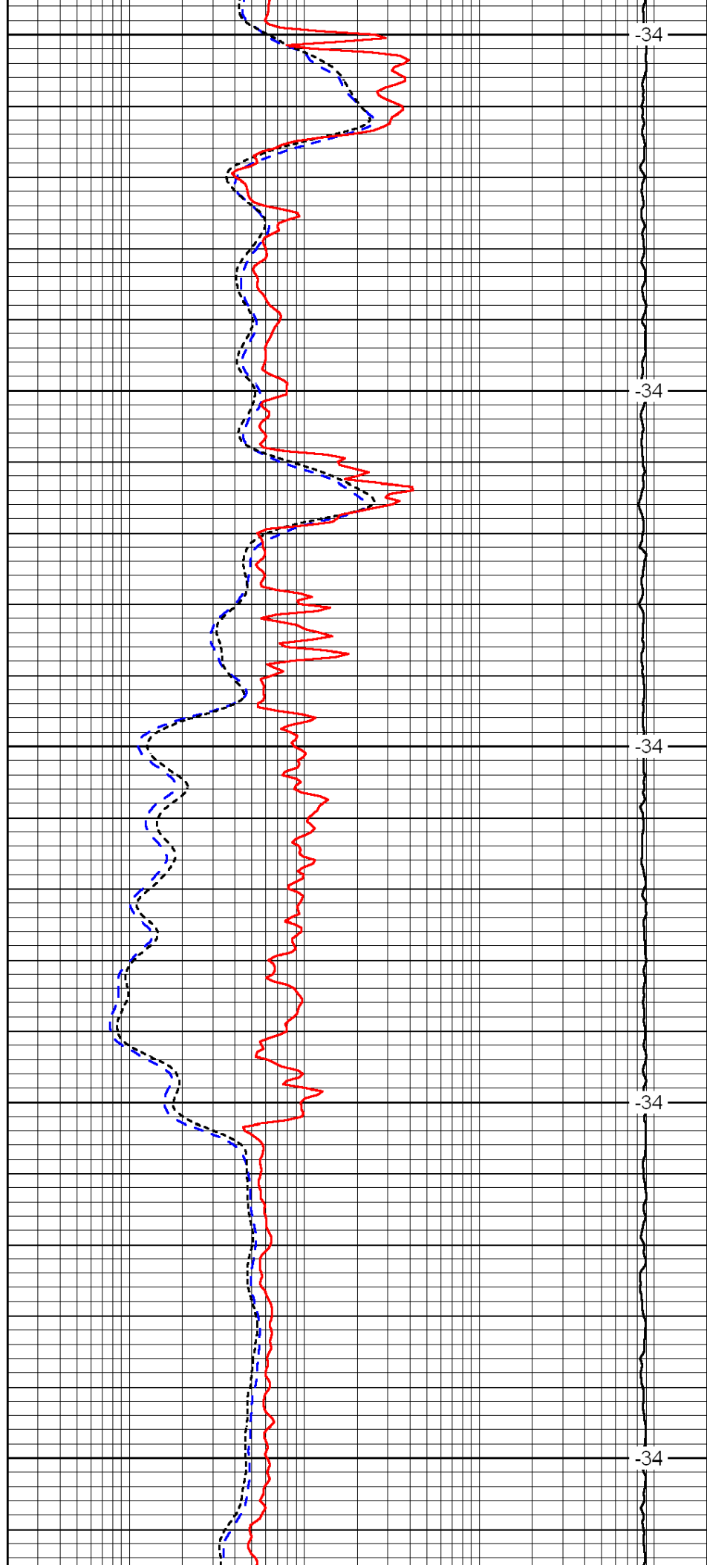
1550

1600

1650

1700

1750



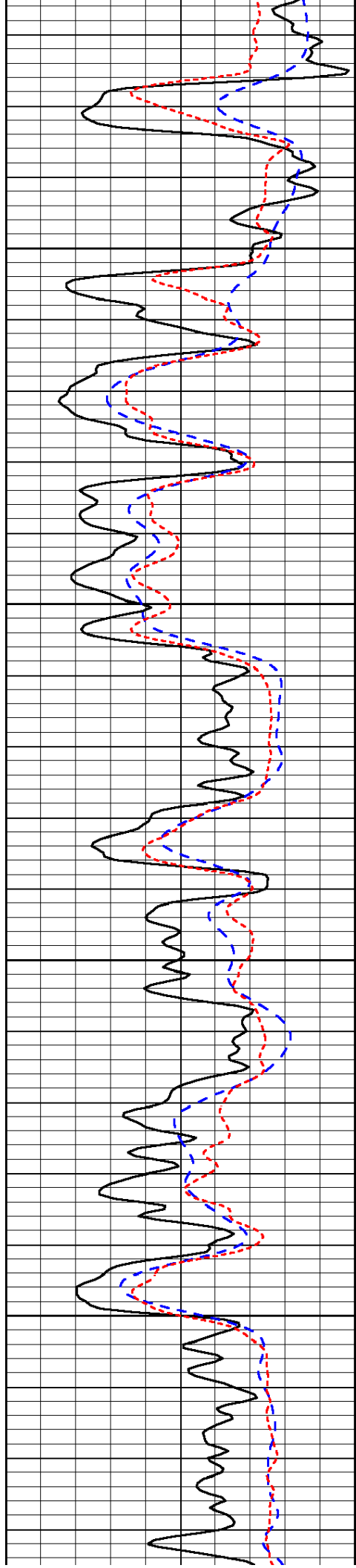
-34

-34

-34

-34

-34

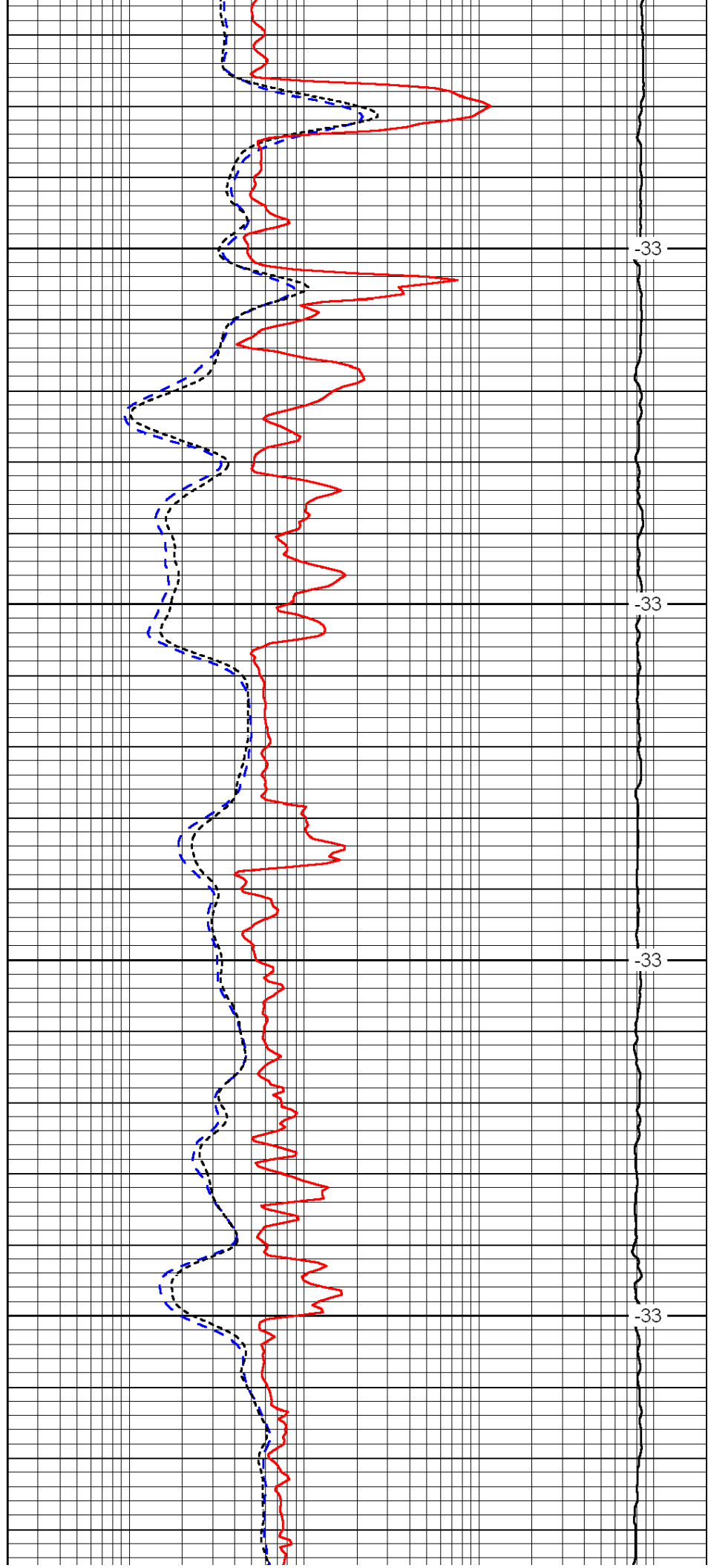


1800

1850

1900

1950

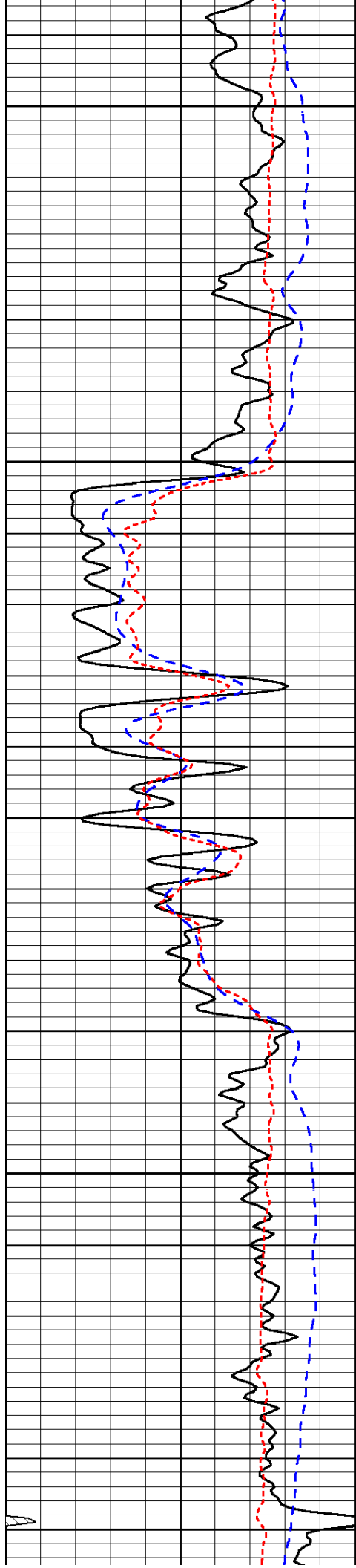


-33

-33

-33

-33



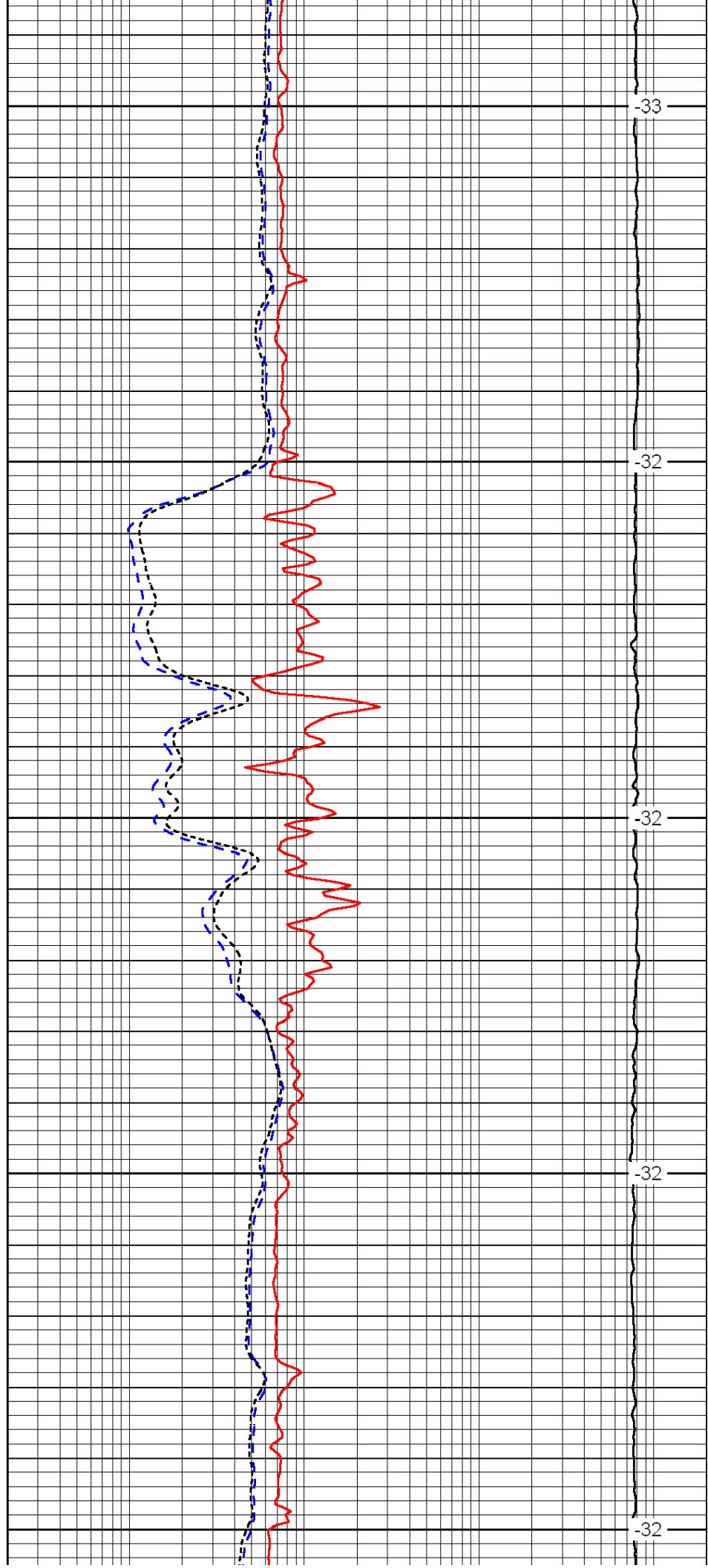
2000

2050

2100

2150

2200



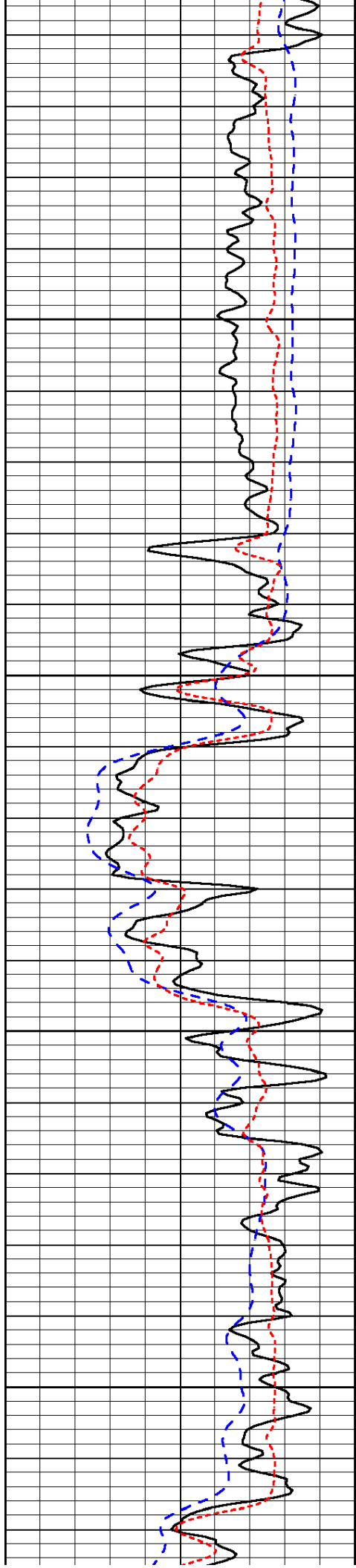
-33

-32

-32

-32

-32

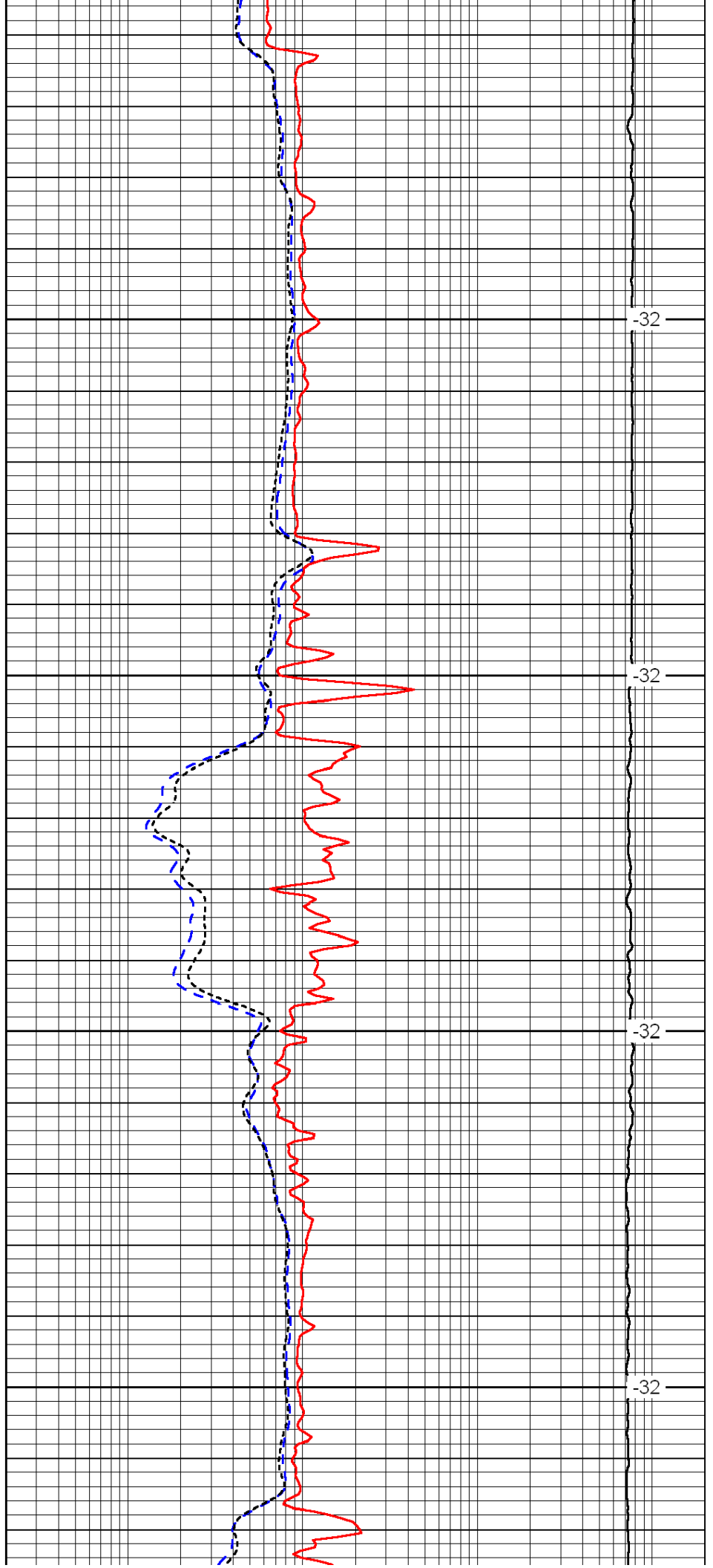


2250

2300

2350

2400

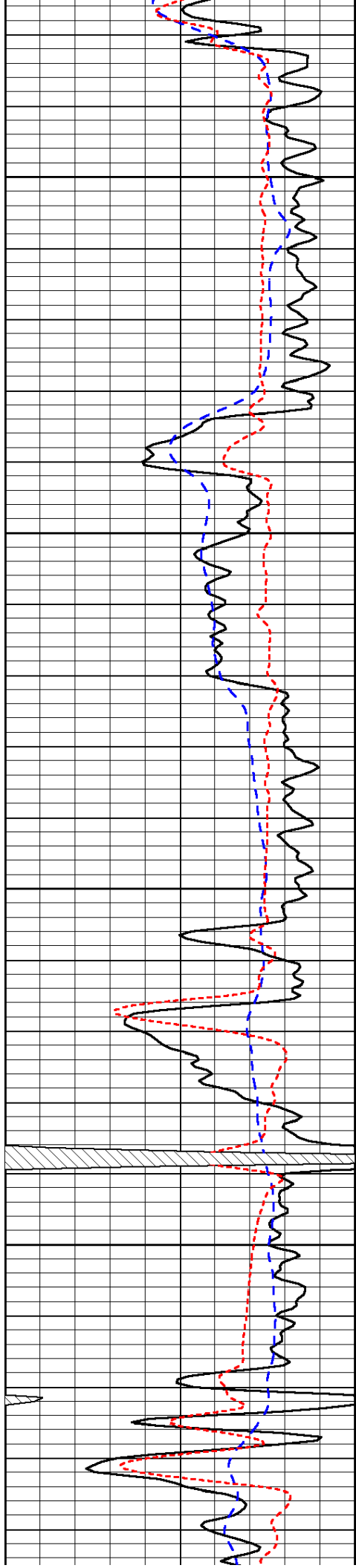


-32

-32

-32

-32

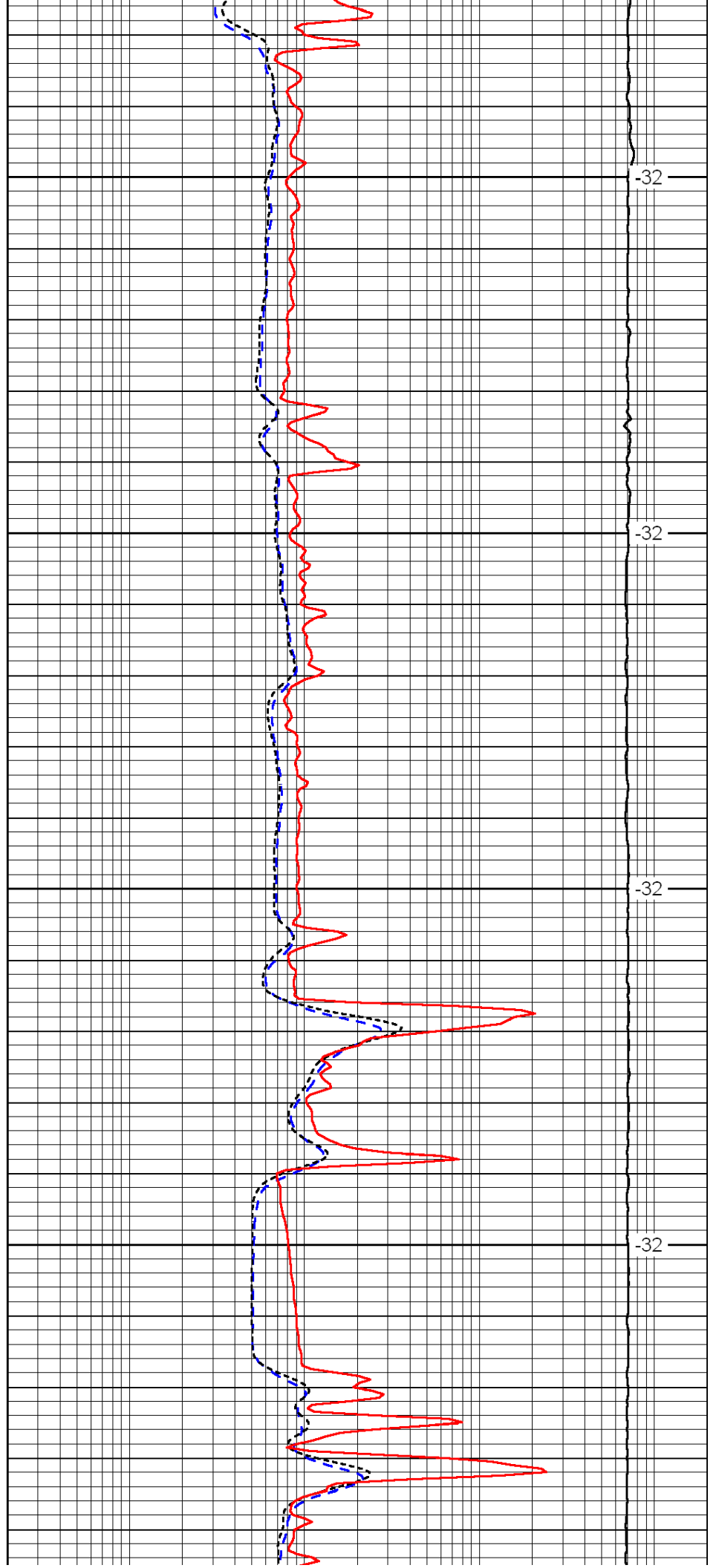


2450

2500

2550

2600

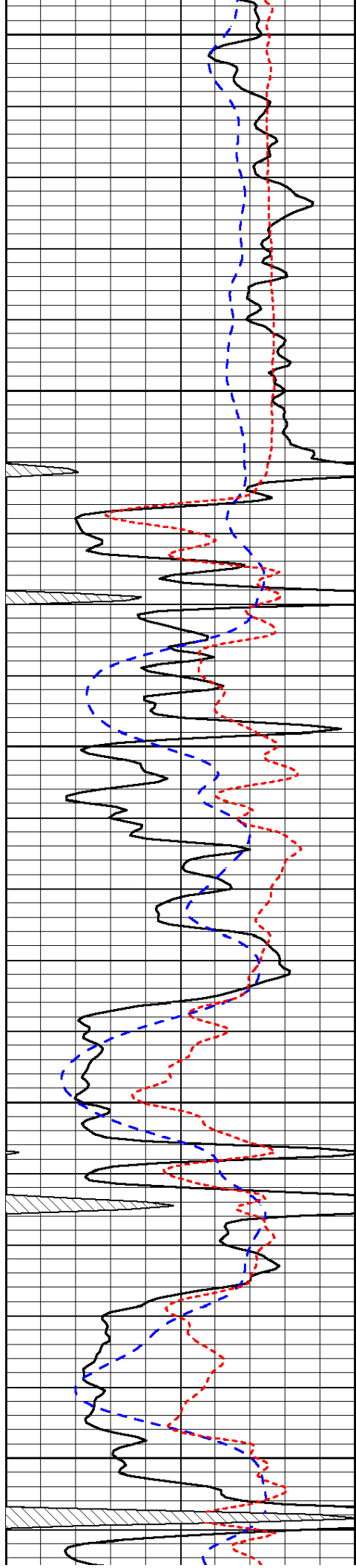


-32

-32

-32

-32



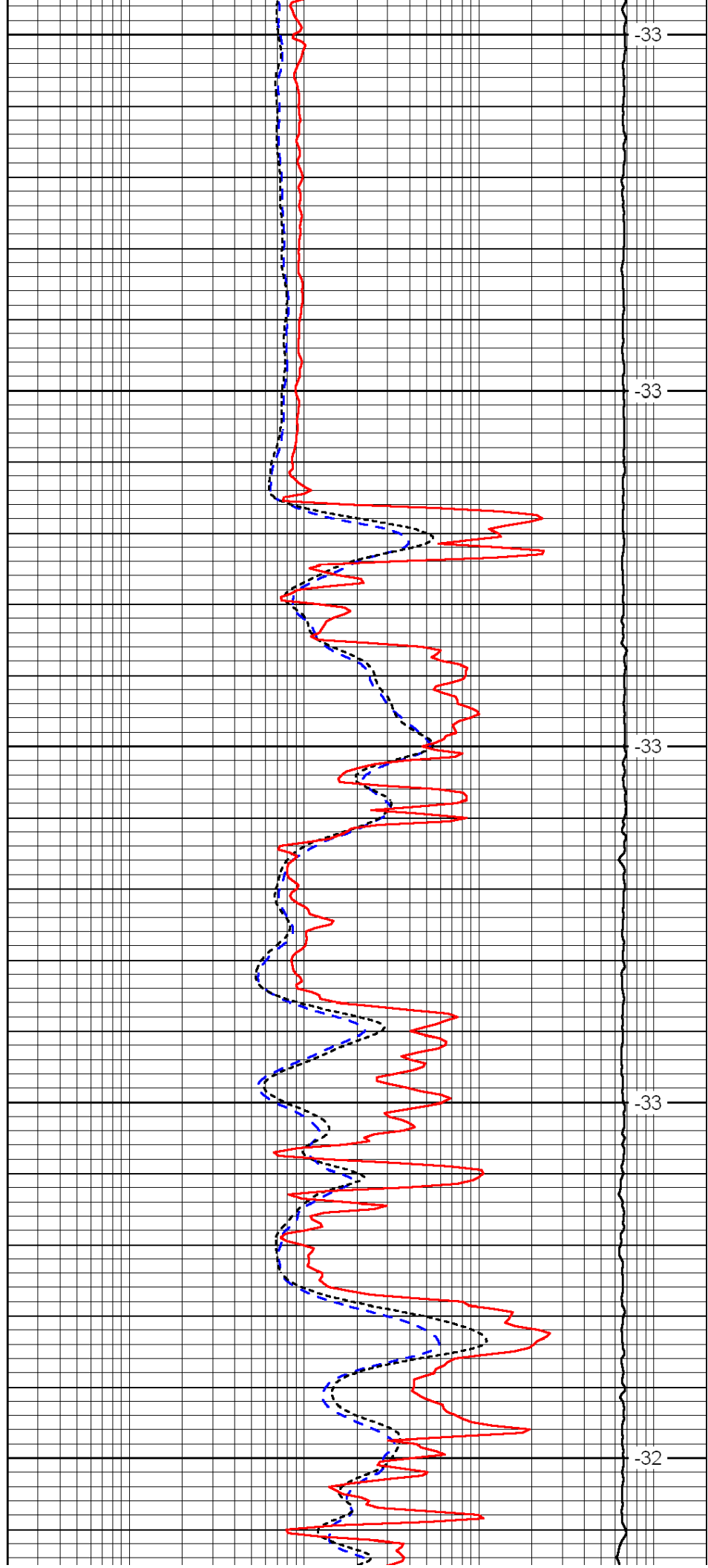
2650

2700

2750

2800

2850



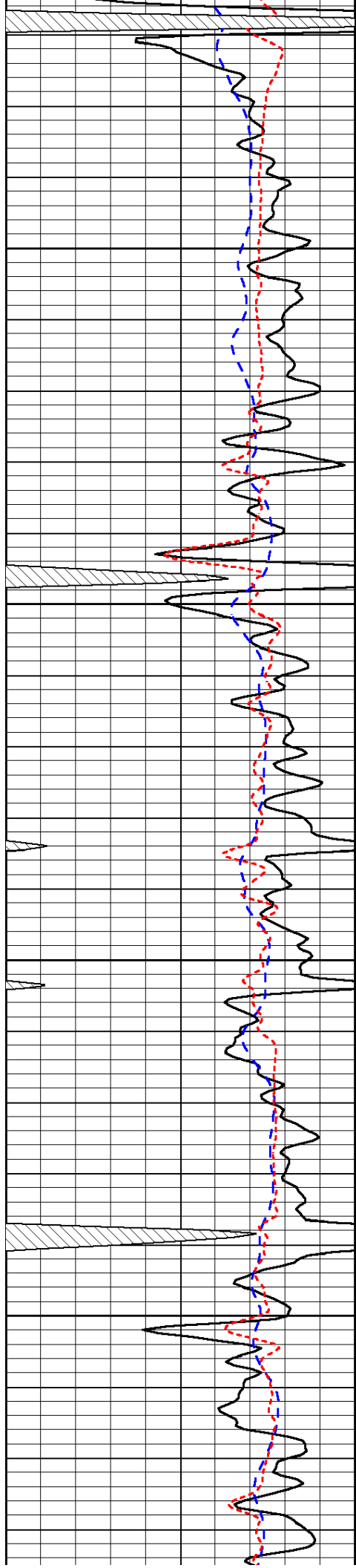
-33

-33

-33

-33

-32

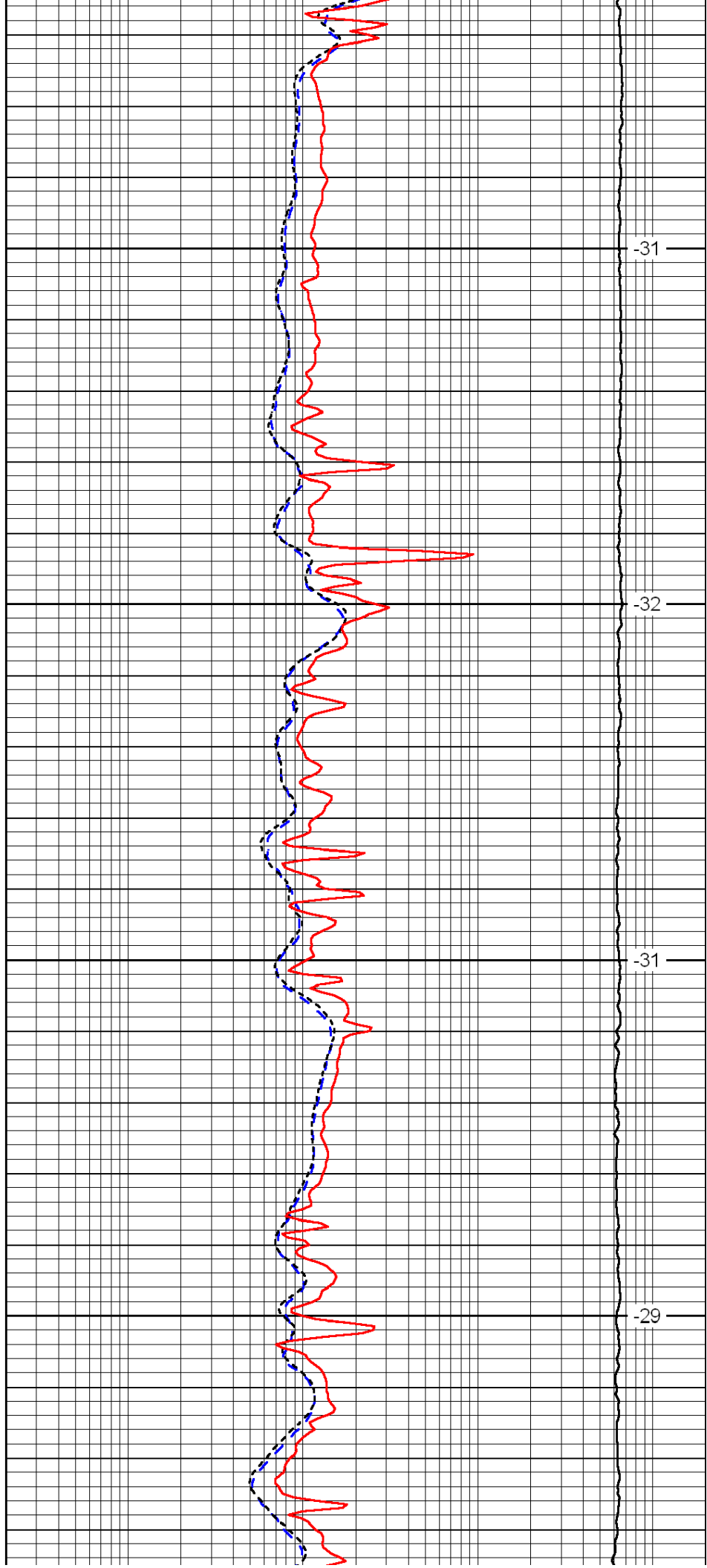


2900

2950

3000

3050

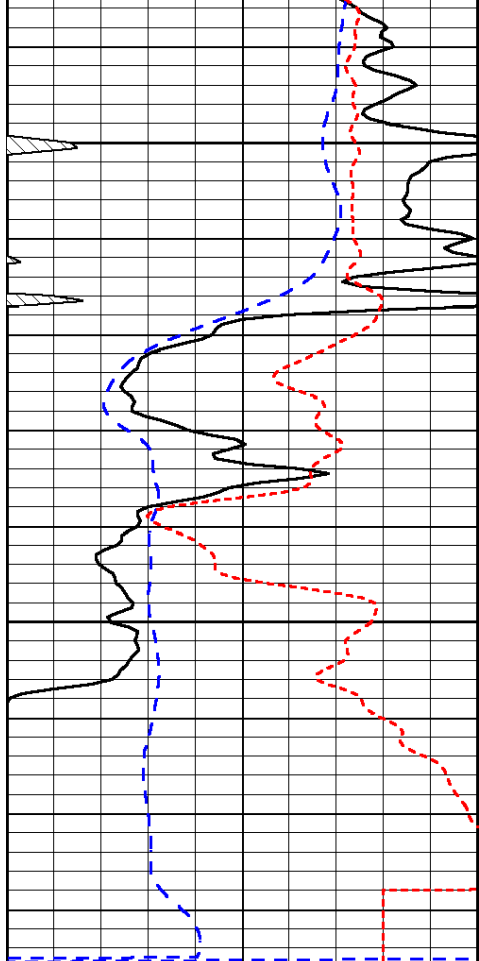


-31

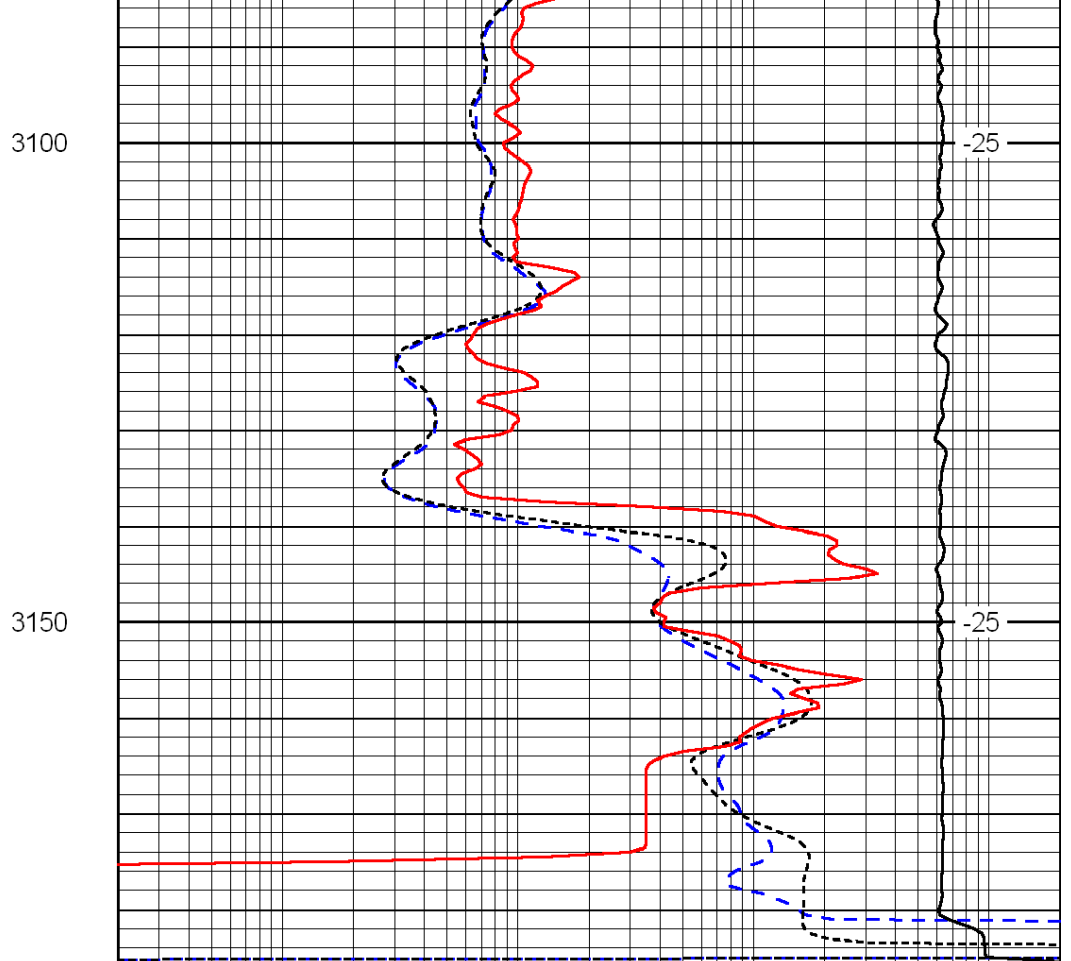
-32

-31

-29



0	Gamma Ray	150
-200	SP (mV)	0
-160	Rxo / Rt	40



0.2	Deep Resistivity	2000
0.2	Medium Resistivity	2000
0.2	Shallow Resistivity	2000
15000	Line Tension	0

LSPD