



DIGITAL LOG (785) 625-3858

Microresistivity Log

API No. 15-113-21,345-00-00

Company Russell Oil, Inc.  
 Well Enochs No. 1  
 Field Welch-Bornholdt  
 County McPherson State  
 Location S/2 SW NE  
 2,310' FNL & 1,980' FEL  
 Sec: 19 Twp: 20S Rge: 5W  
 Kansas

Other Services  
 CNL/CDL  
 DIL

Permanent Datum	Ground Level	Elevation	1529
Log Measured From	Kelly Bushing	6	Ft. Above Perm. Datum
Drilling Measured From	Kelly Bushing		
Date	6/3/2011		
Run Number	Two		
Depth Driller	3385		
Depth Logger	3384		
Bottom Logged Interval	3383		
Top Log Interval	2500		
Casing Driller	8.625 @ 295		
Casing Logger	294		
Bit Size	7.875		
Type Fluid in Hole	Chemical		
Salinity, ppm CL	6800		
Density / Viscosity	9.4   45		
pH / Fluid Loss	11.0   10.2		
Source of Sample	Flowline		
Rm @ Meas. Temp	.74 @ 76		
Rmf @ Meas. Temp	.56 @ 76		
Rmc @ Meas. Temp	1.00 @ 76		
Source of Rmf / Rmc	Charts		
Rm @ BHT	.51 @ 110		
Operating Rig Time	4 Hours		
Max Rec. Temp. F	110		
Equipment Number	10		
Location	Hays		
Recorded By	J. Long		
Witnessed By	Todd Morgenstern		

<<< Fold Here >>>

All interpretations are opinions based on inferences from electrical or other measurements and we cannot and do not guarantee the accuracy or correctness of any interpretation, and we shall not, except in the case of gross or willful negligence on our part, be liable or responsible for any loss, costs, damages, or expenses incurred or sustained by anyone resulting from any interpretation made by any of our officers, agents or employees. These interpretations are also subject to our general terms and conditions set out in our current Price Schedule.

Comments

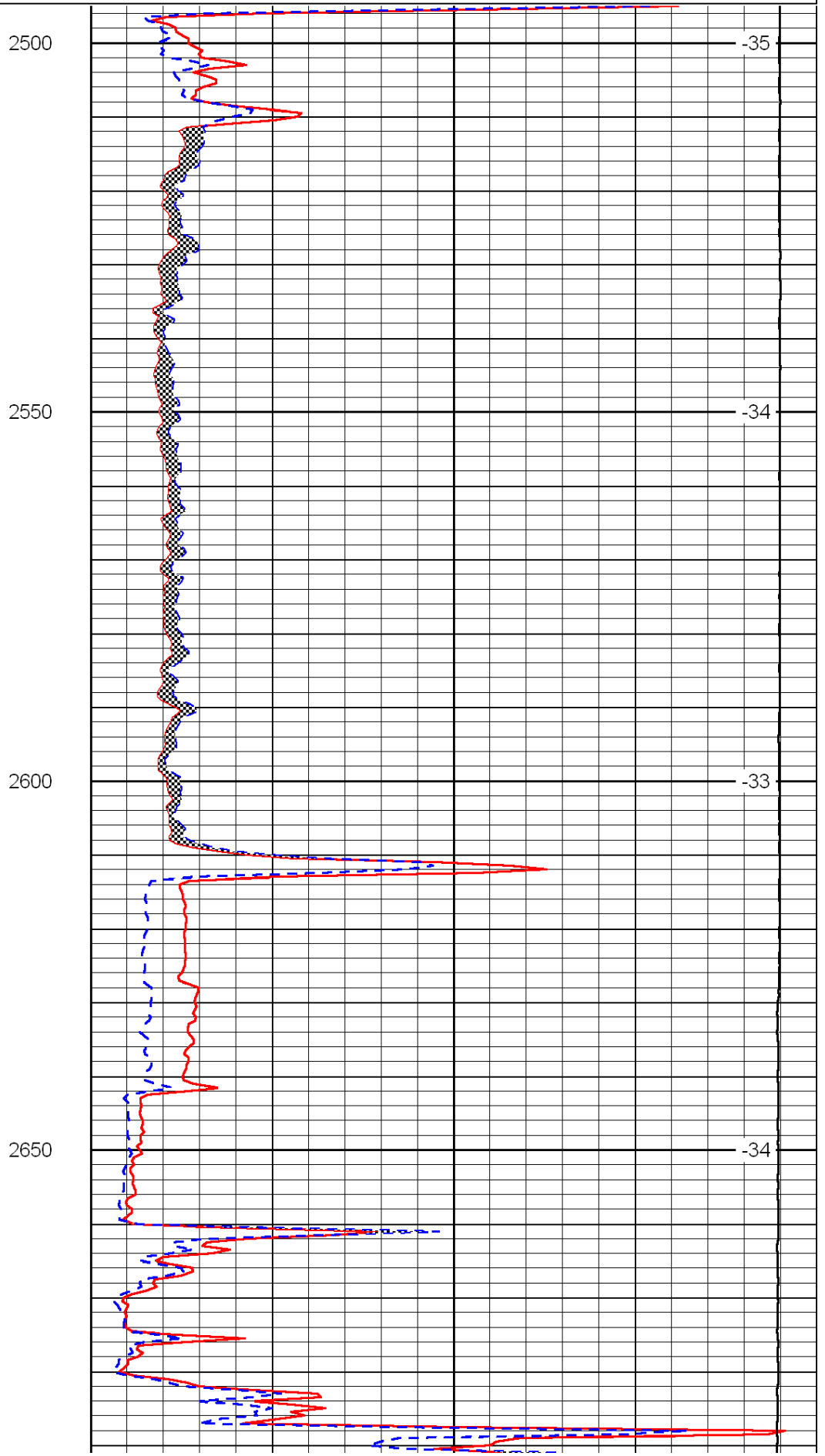
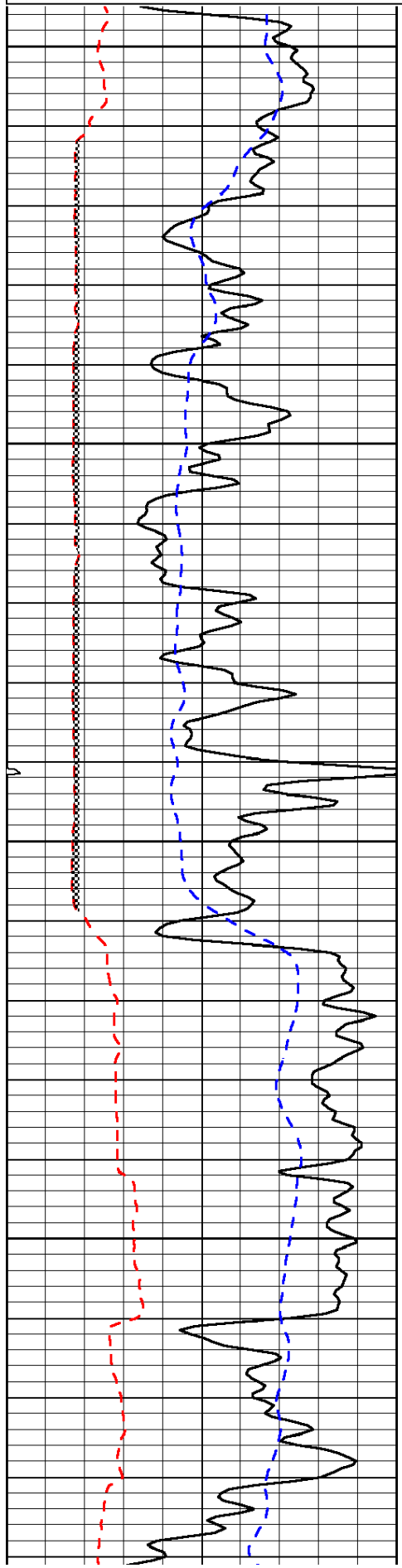
Thank you for using Log-Tech, Inc.  
 (785) 625-3858

Lyons, South to Faxman Blacktop, East to Plum Street, 1 East, 1/2 North, West Into

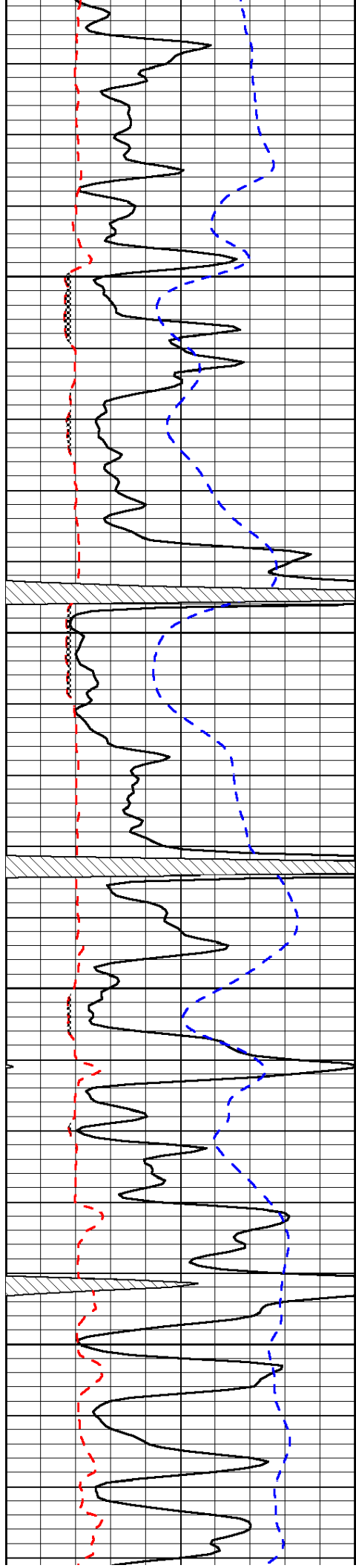
0	Gamma Ray	150
6	Micro Log Caliper (GAPI)	16
-200	SP (mV)	0

0	Micro Inverse 1 X 1	40
0	Micro Normal 2"	40
15000	Line Weight	0

LSPD





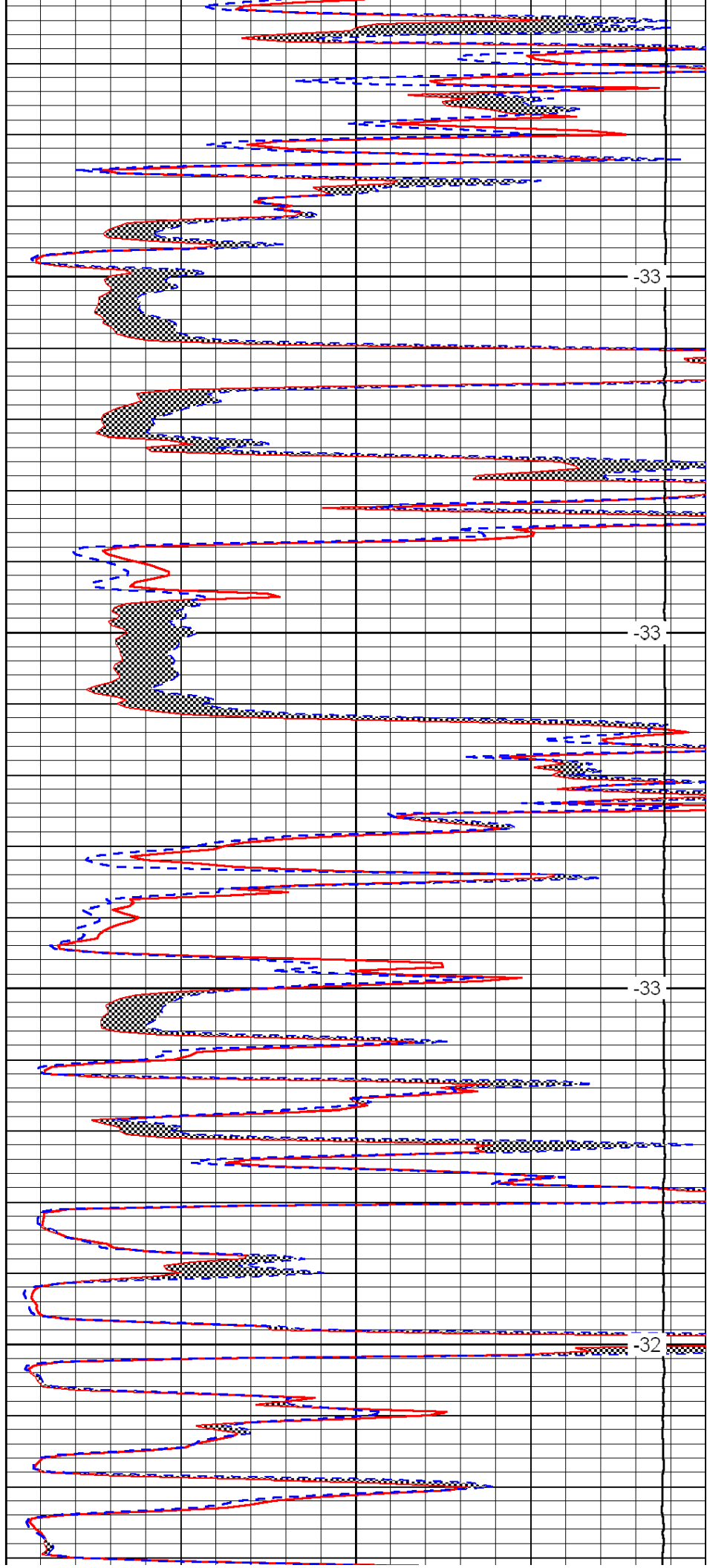


2950

3000

3050

3100

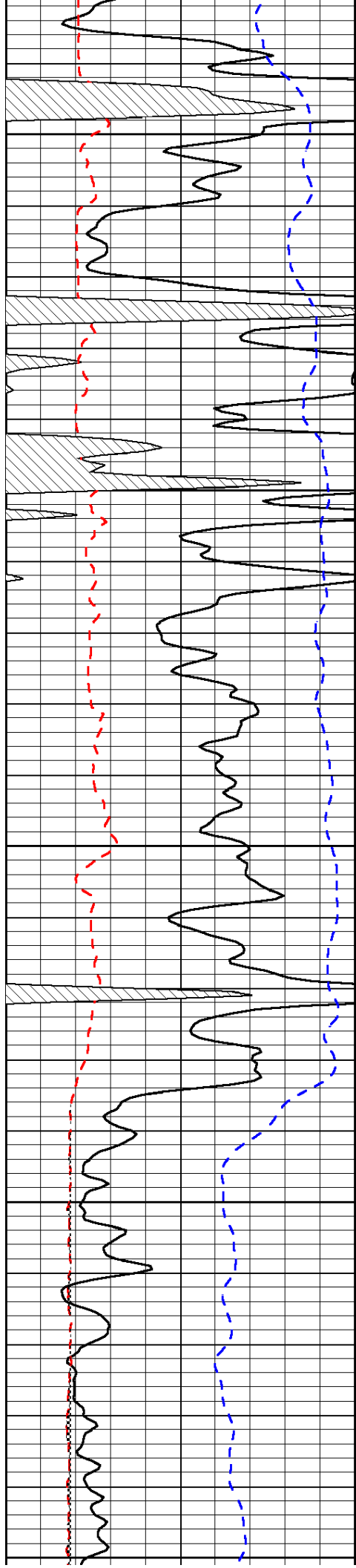


-33

-33

-33

-32



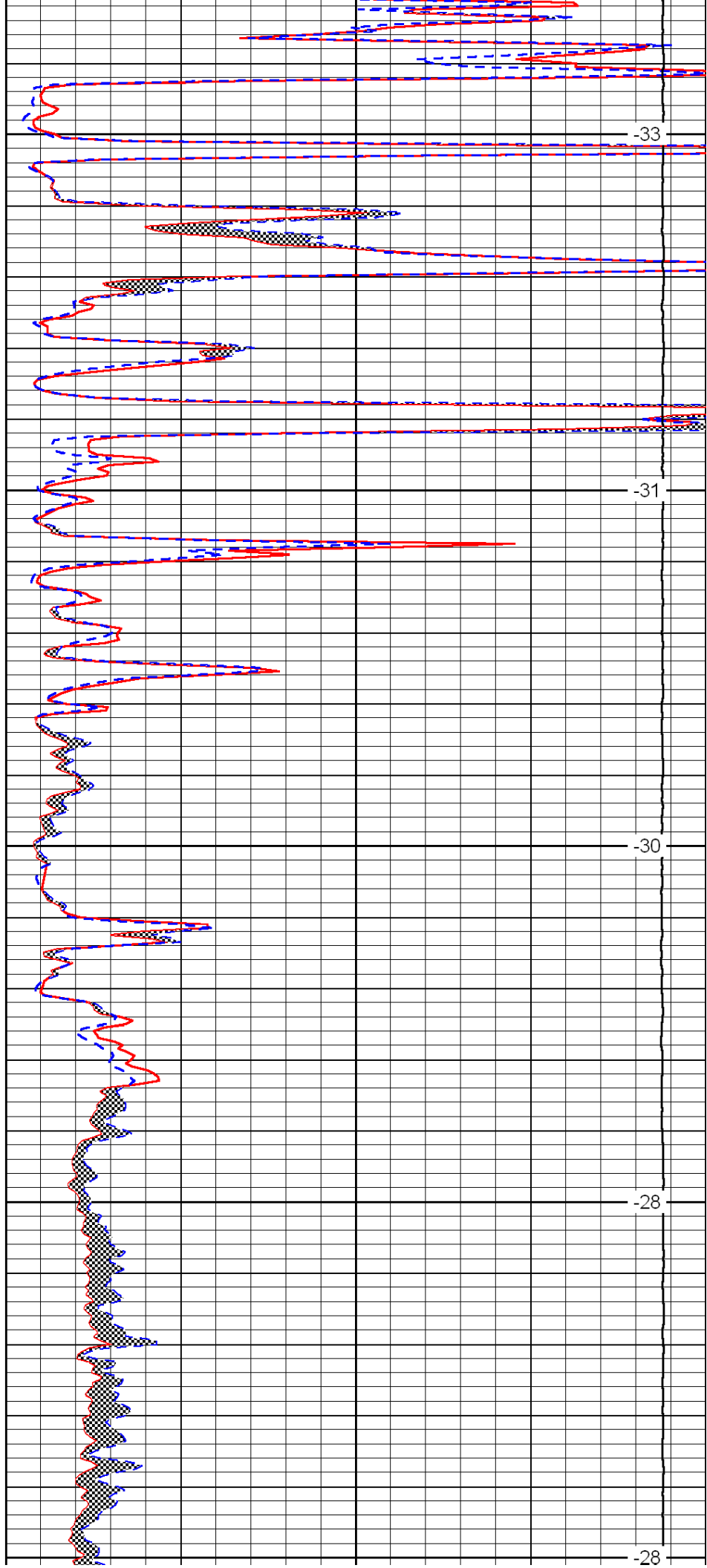
3150

3200

3250

3300

3350



-33

-31

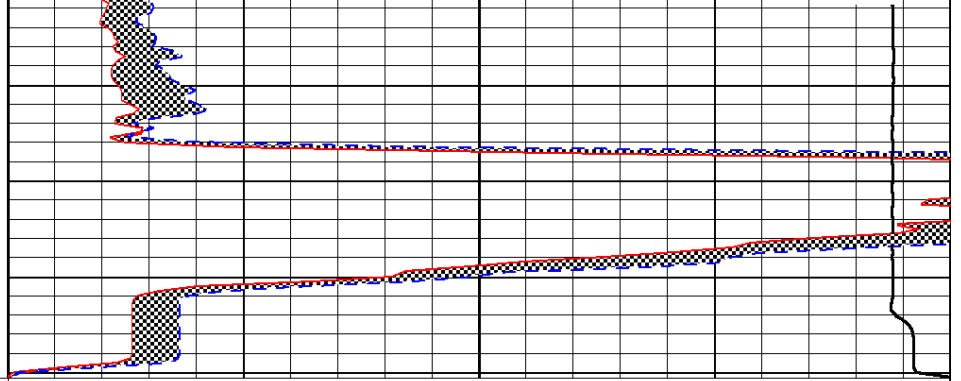
-30

-28

-28



0	Gamma Ray	150
6	Micro Log Caliper (GAPI)	16
-200	SP (mV)	0



0	Micro Inverse 1 X 1	40
0	Micro Normal 2''	40
15000	Line Weight	0

LSPD