



**COMPLETION  
& PRODUCTION  
SERVICES CO.**

**DUAL  
INDUCTION  
LOG**

Company SHELBY RESOURCES, LLC.  
Well SCHLESSIGER CATTLE #1-2  
Field BOYD  
County BARTON State KANSAS

Company SHELBY RESOURCES, LLC.  
Well SCHLESSIGER CATTLE #1-2  
Field BOYD  
County BARTON  
State KANSAS

Location: API #: 15-009-25833-00-00  
SEC 2 TWP 18S RGE 14W  
2138' FNL & 330' FEL  
N/2 - SE - SE - NE  
Permanent Datum GROUND LEVEL Elevation 1833  
Log Measured From KELLY BUSHING 9' A.G.L.  
Drilling Measured From KELLY BUSHING  
Other Services  
CDL/CNL  
MEL/SON  
Elevation  
K.B. 1842  
D.F. 1840  
G.L. 1833

Date	5/25/13		
Run Number	ONE		
Depth Driller	3420		
Depth Logger	3419		
Bottom Logged Interval	3417		
Top Log Interval	0		
Casing Driller	804		
Casing Logger	804		
Bit Size	7.875		
Type Fluid in Hole	CHEMICAL MUD	CHLORIDES 6.400	
Density / Viscosity	9.1 / 71		
pH / Fluid Loss	9.5 / 8.8		
Source of Sample	FLOWLINE		
Rim @ Meas. Temp	0.65 @ 80F		
Rmf @ Meas. Temp	0.49 @ 80F		
Rmc @ Meas. Temp	0.78 @ 80F		
Source of Rmf / Rmc	MEASURED		
Rim @ BHT	0.4 @ 111F		
Time Circulation Stopped	2 HOURS		
Time Logger on Bottom			
Maximum Recorded Temperature	111F		
Equipment Number	860		
Location	HAYS, KS.		
Recorded By	JEFF GRONEWEG		
Witnessed By	JEREMY SCHWARTZ		

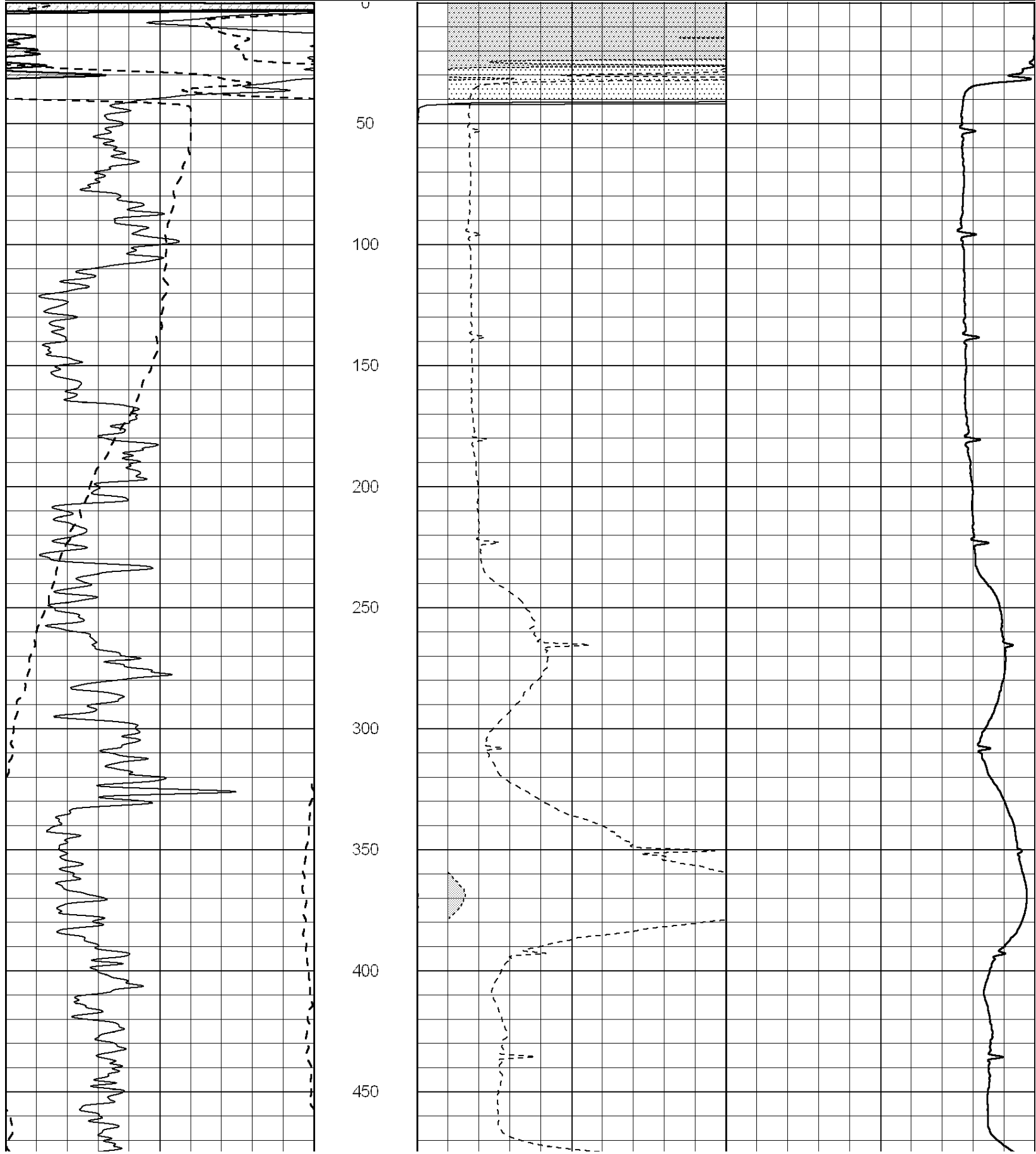
<<< Fold Here >>>

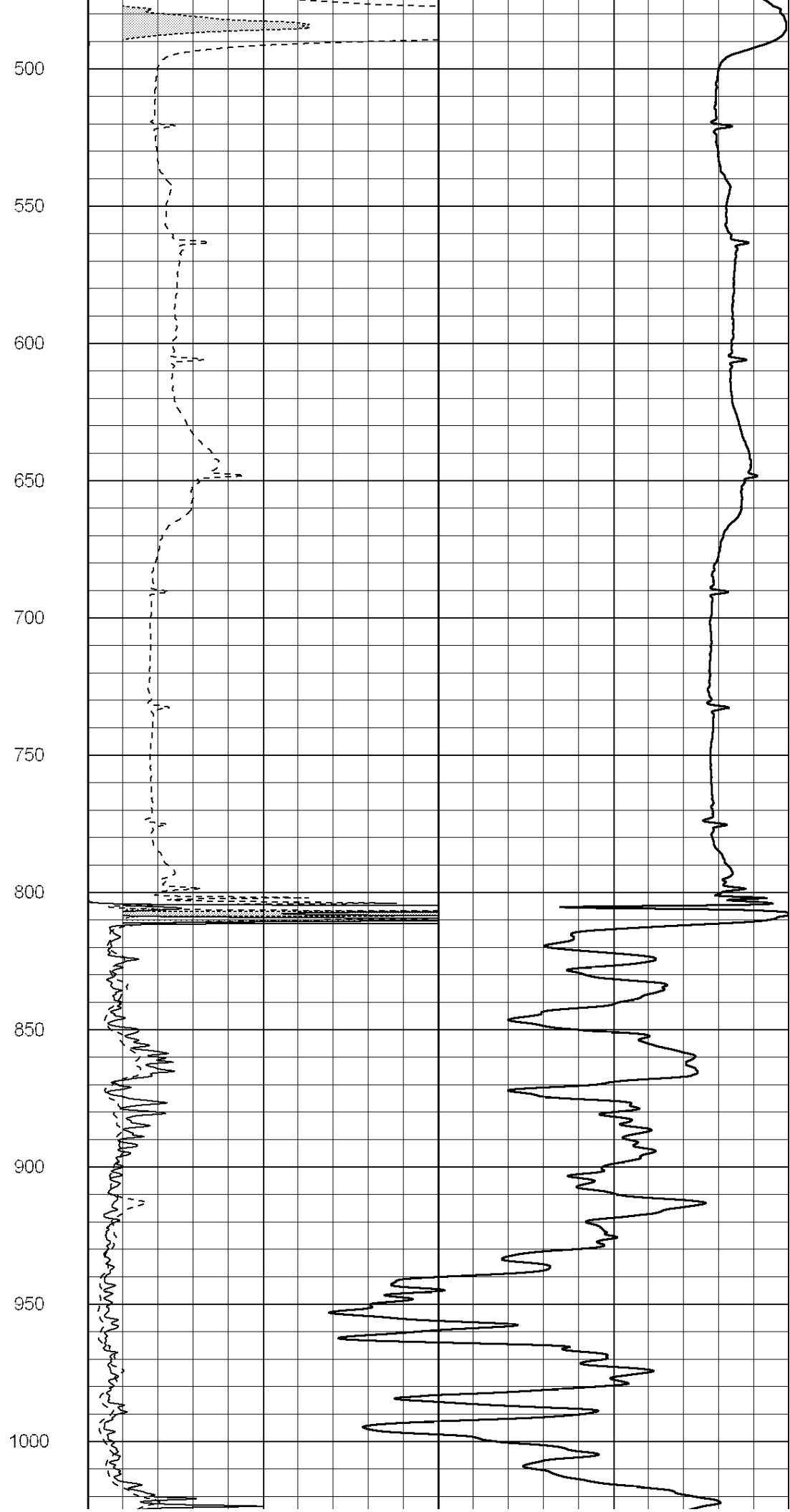
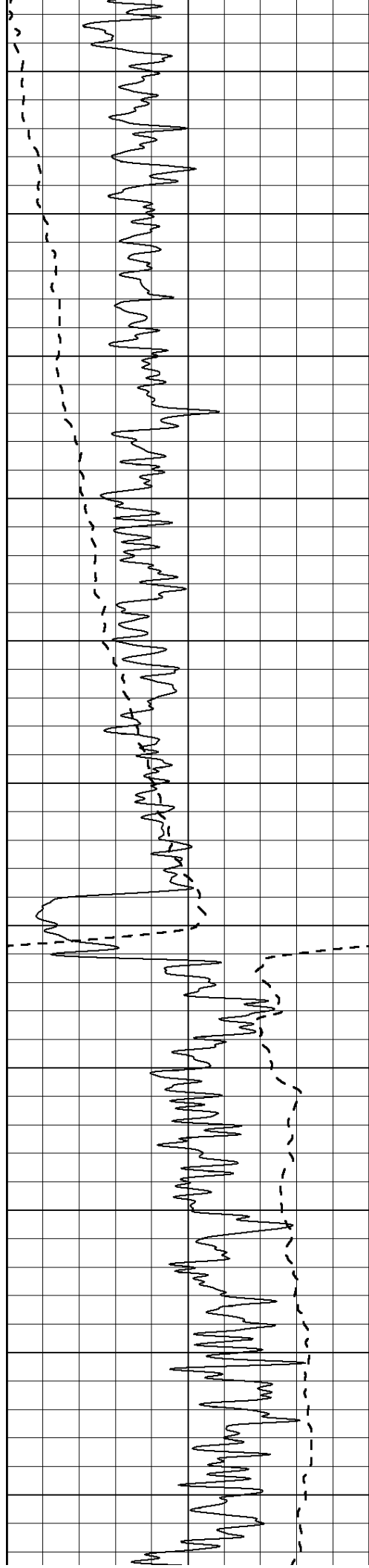
All interpretations are opinions based on inferences from electrical or other measurements and we cannot and do not guarantee the accuracy or correctness of any interpretation, and we shall not, except in the case of gross or willful negligence on our part, be liable or responsible for any loss, costs, damages, or expenses incurred or sustained by anyone resulting from any interpretation made by any of our officers, agents or employees. These interpretations are also subject to our general terms and conditions set out in our current Price Schedule.

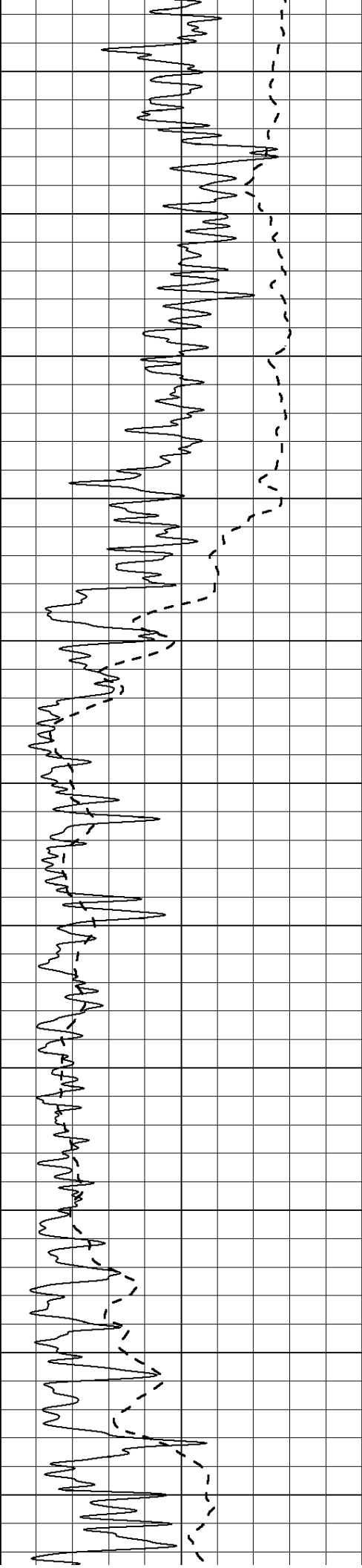
Comments

NABORS COMPLETION & PRODUCTION SERVICES  
785-628-6395  
THANK YOU FOR YOUR BUSINESS  
DIRECTIONS: RUSSELL, KS - SOUTH TO INTERSECTION OF HWYS 4 & 281  
2 MILES SOUTH TO RD 100 - 1 MILE EAST TO RD 30 - 1/2 MILE NORTH - WEST INTO

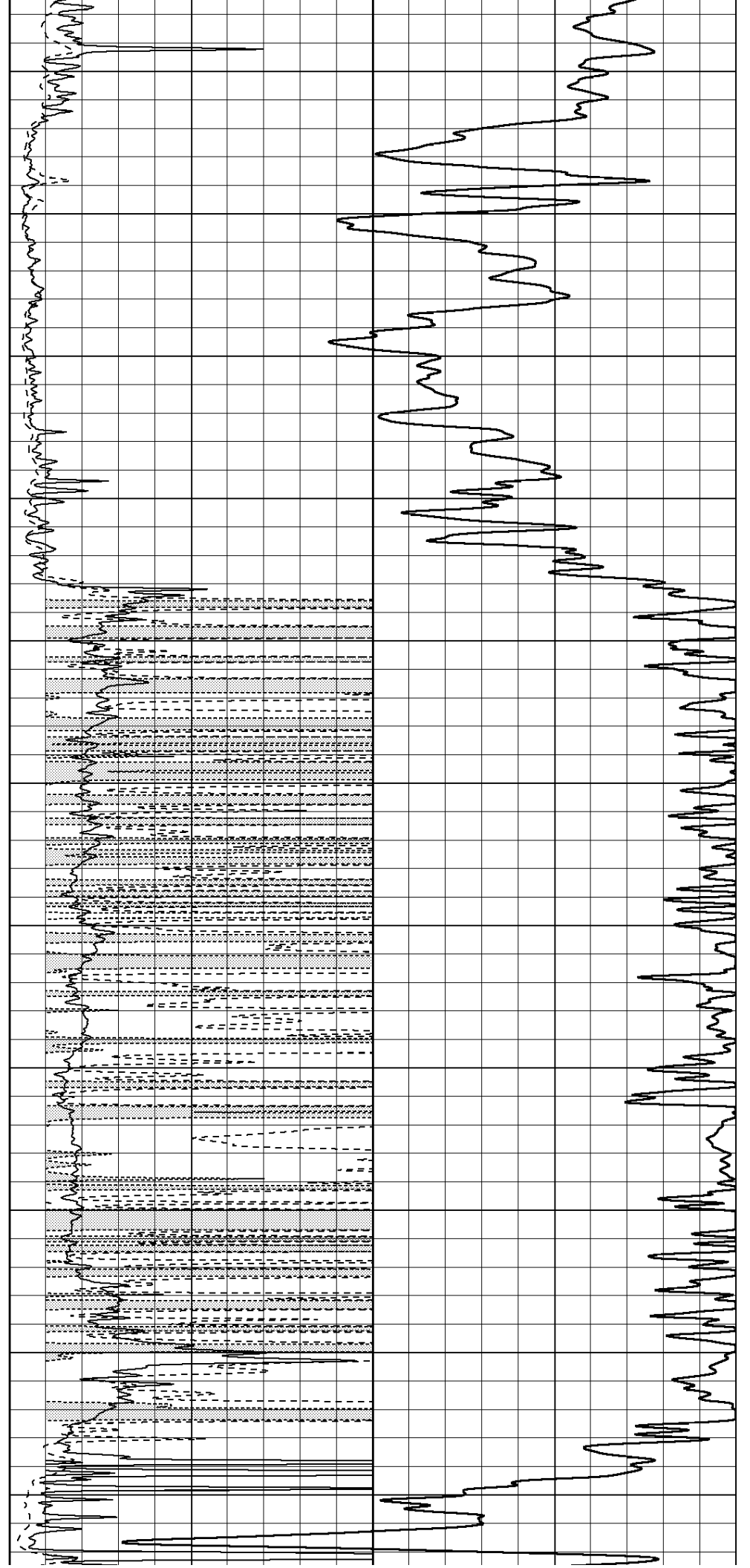
0	Gamma Ray (GAPI)	150	0	RLL3 (Ohm-m)	50
			0	Deep Induction (Ohm-m)	50
			1000	CILD (mmho/m)	0
			50	RILD X10 (Ohm-m)	500
			50	RLL3 X10 (Ohm-m)	500

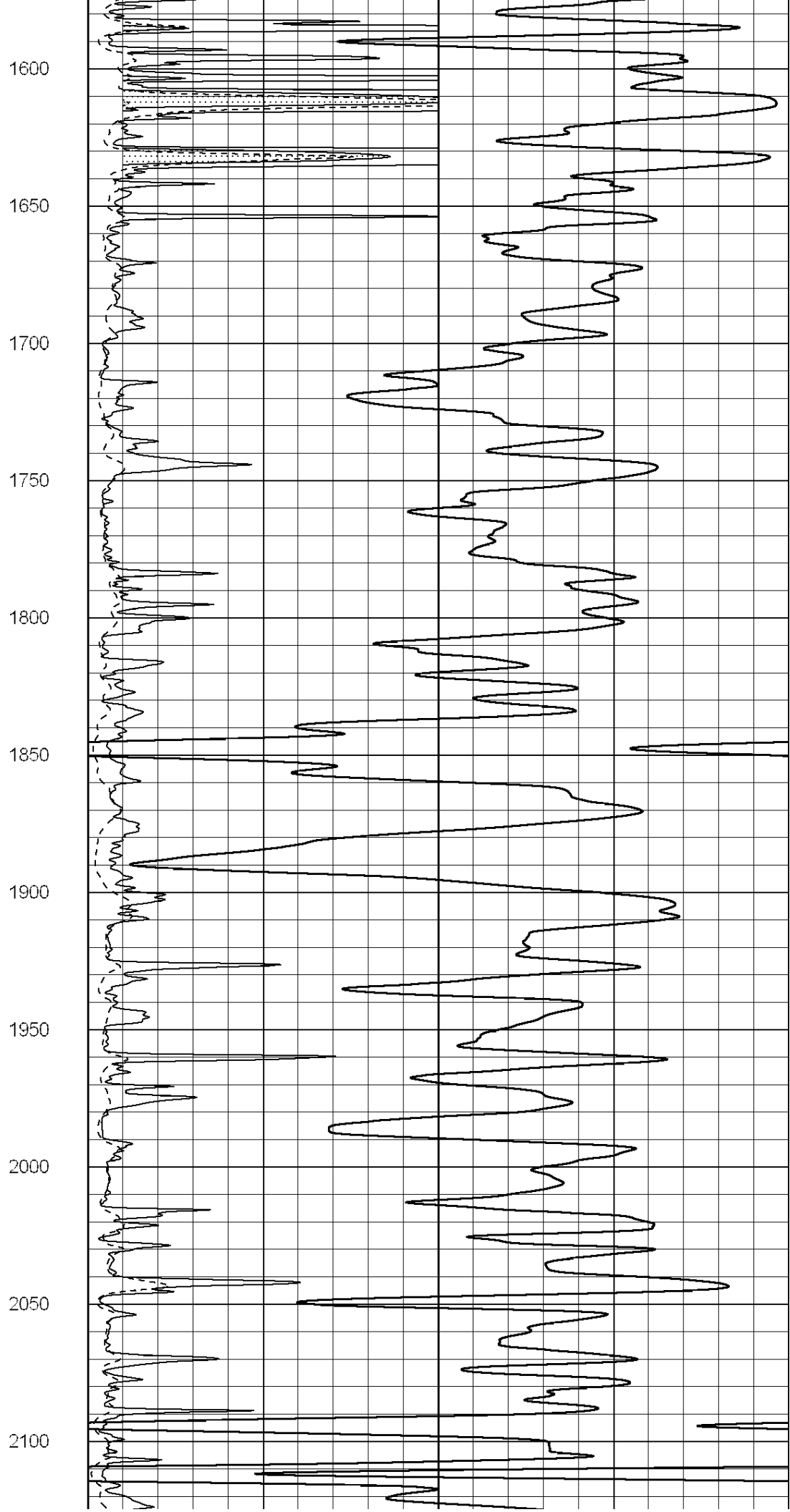
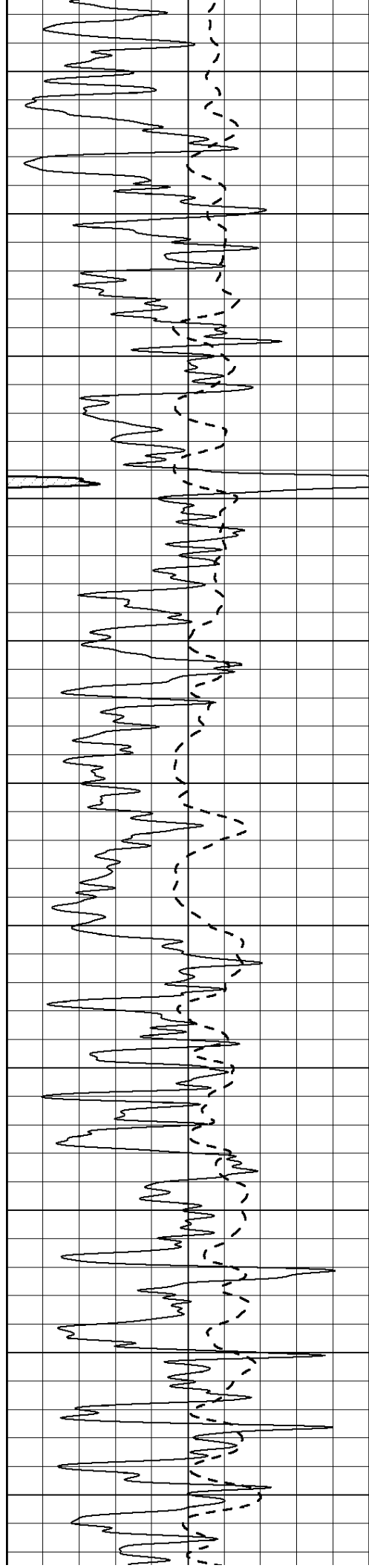


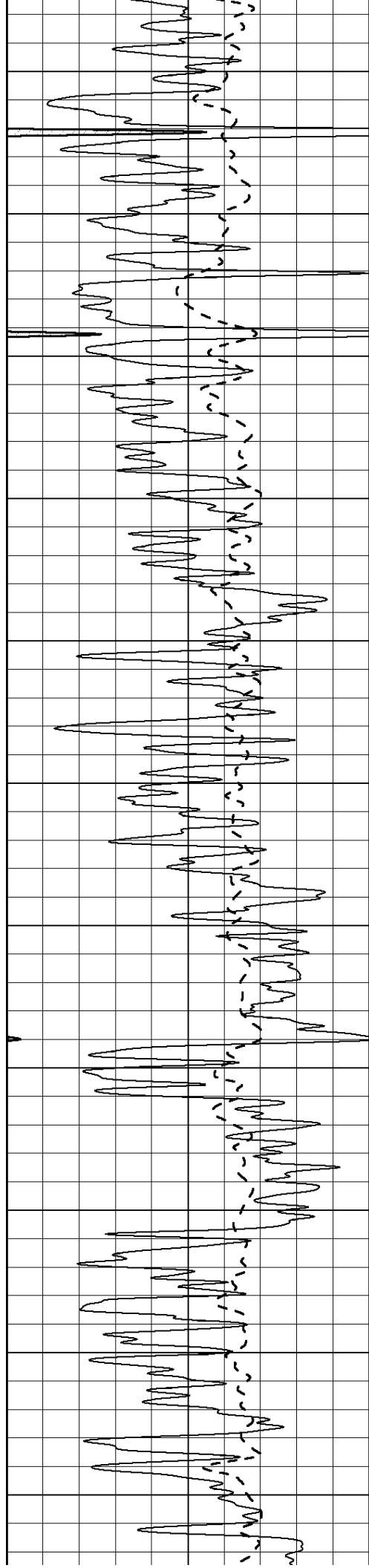




1050  
1100  
1150  
1200  
1250  
1300  
1350  
1400  
1450  
1500  
1550







2150

2200

2250

2300

2350

2400

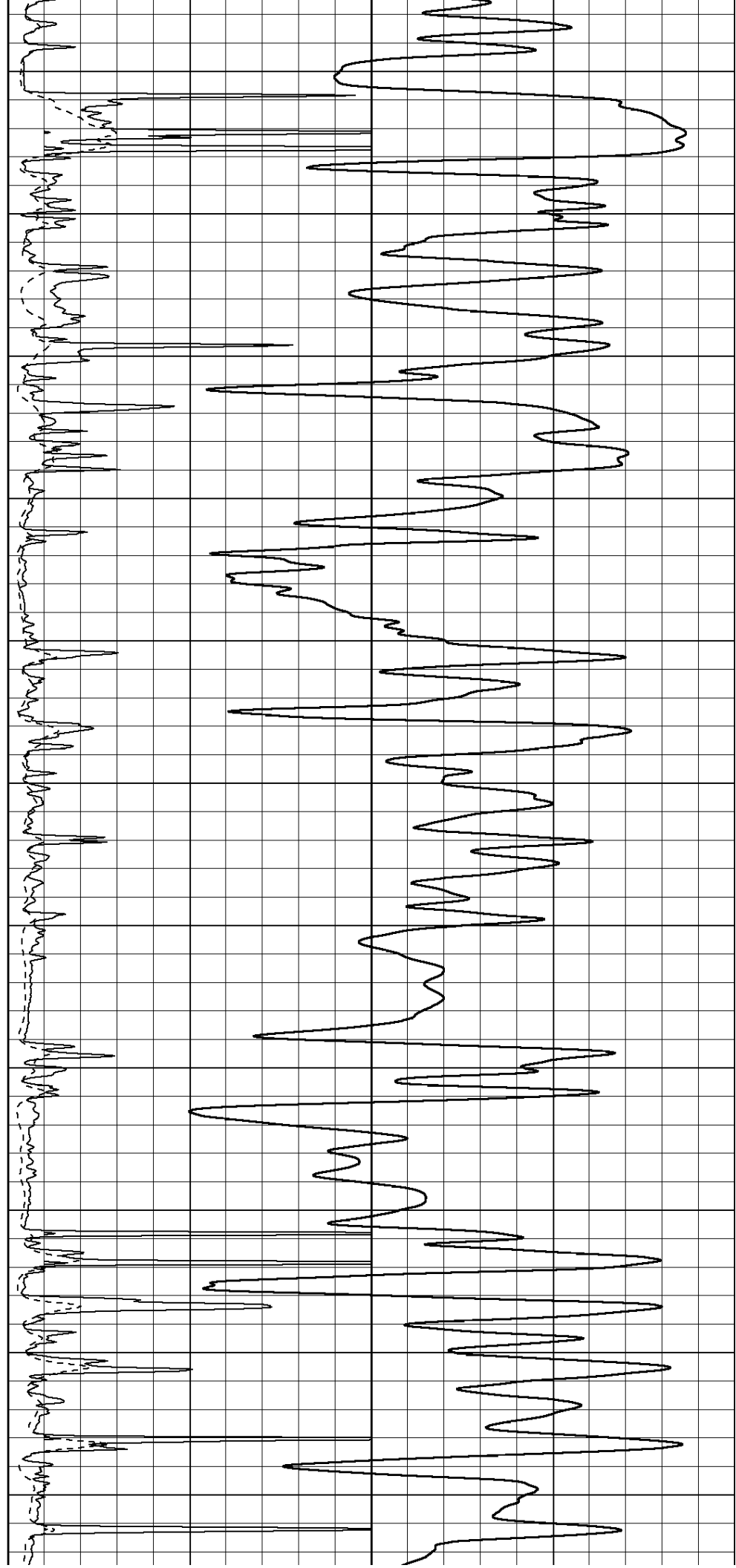
2450

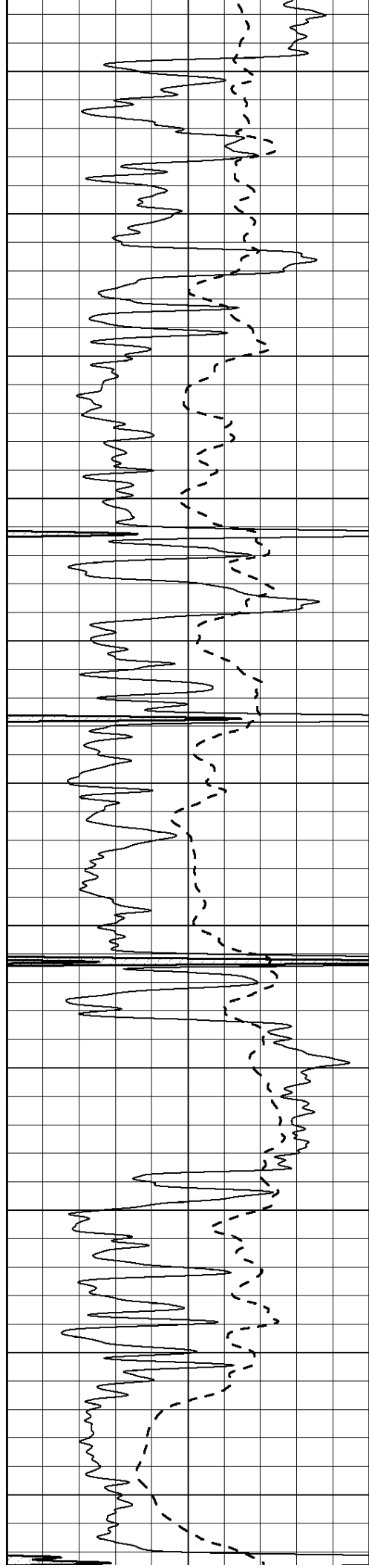
2500

2550

2600

2650





2700

2750

2800

2850

2900

2950

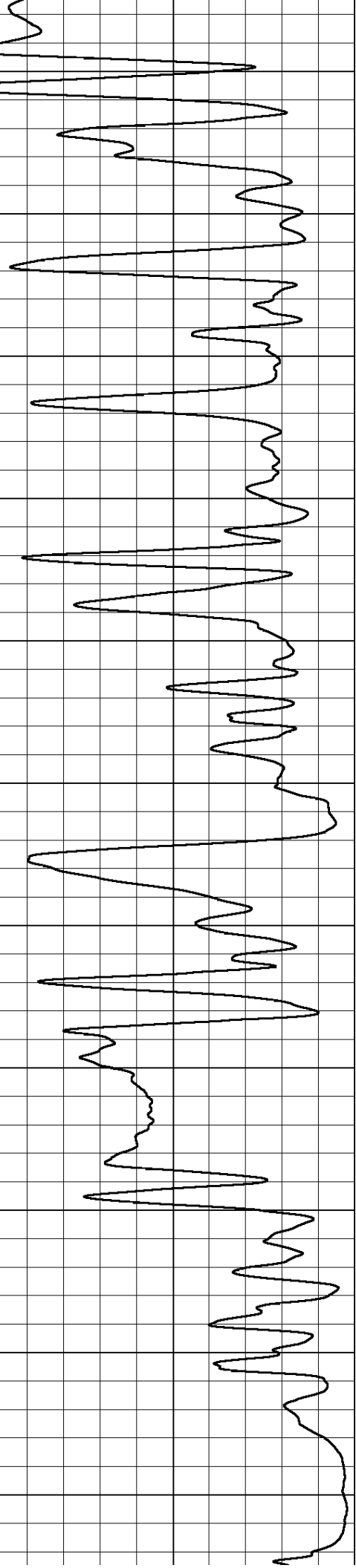
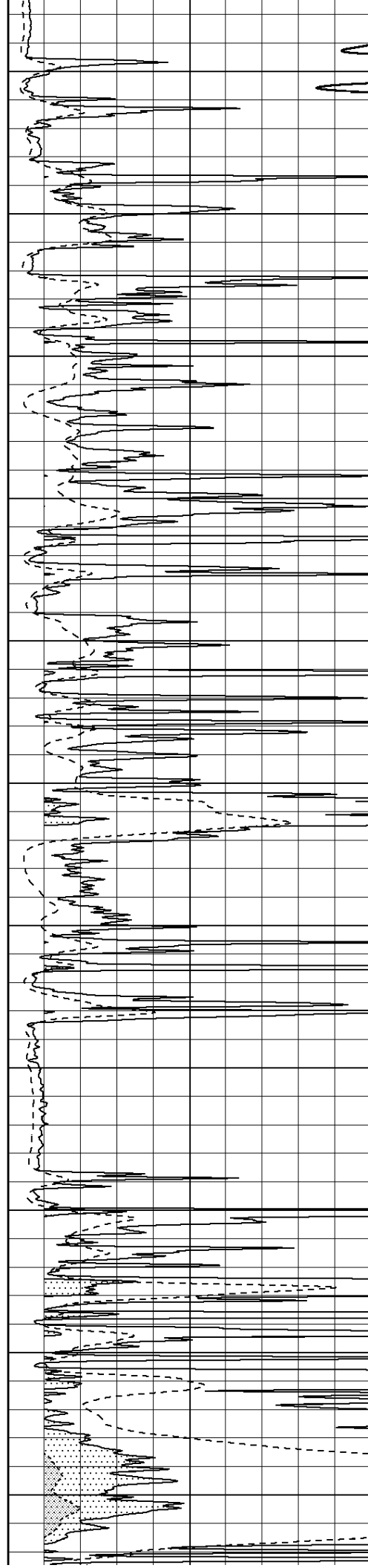
3000

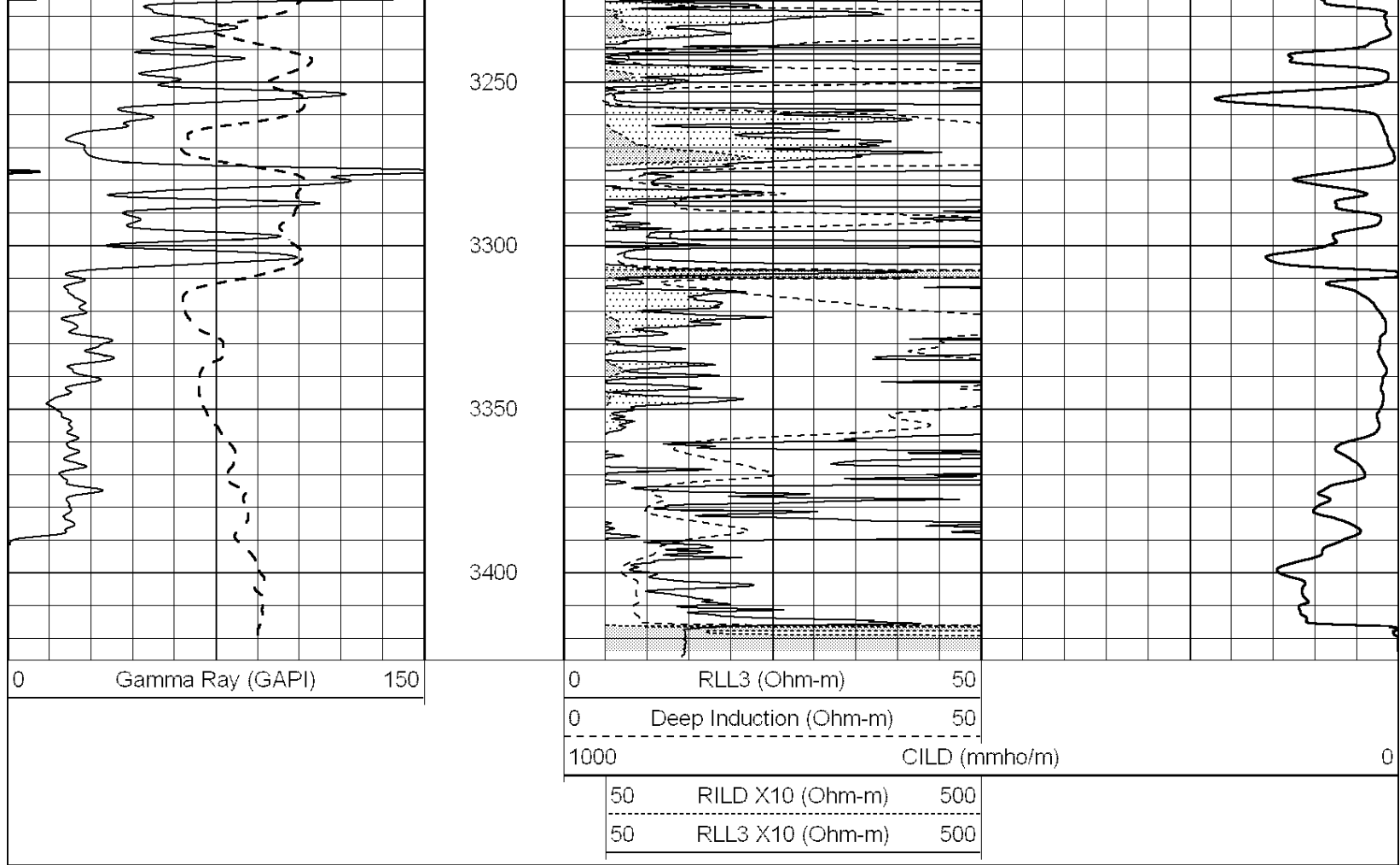
3050

3100

3150

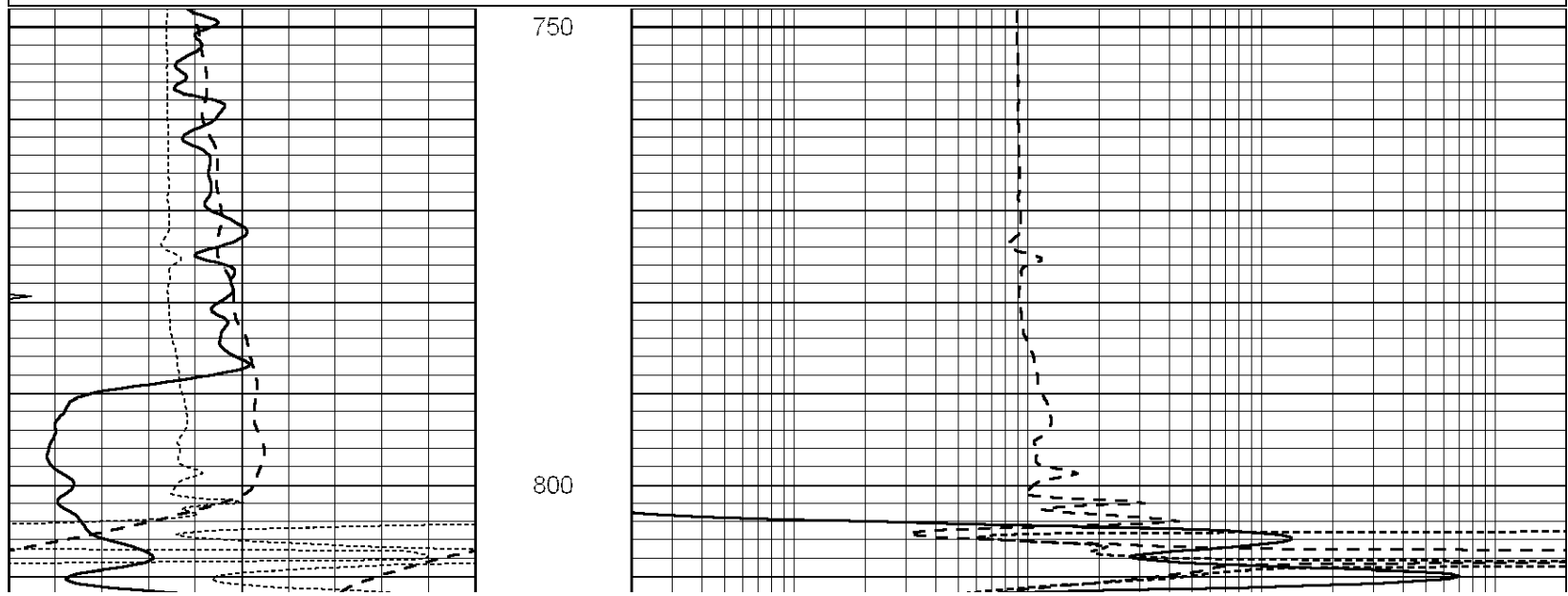
3200

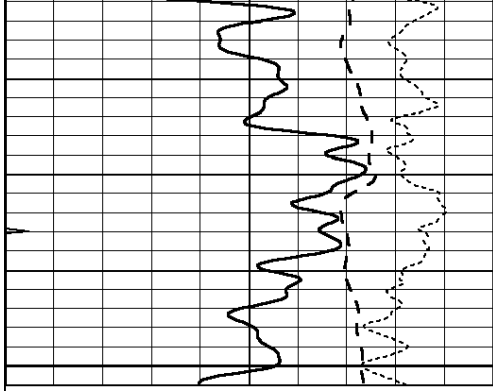




Database File: 010181ddn.db  
 Dataset Pathname: pass3.5  
 Presentation Format: \_dil  
 Dataset Creation: Sun May 26 00:51:59 2013 by Calc Open-Cased 090629  
 Charted by: Depth in Feet scaled 1:240

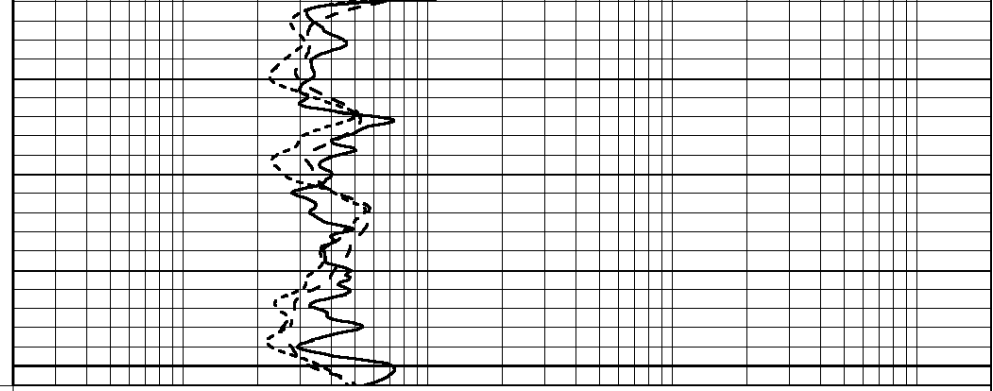
0	GAMMA RAY (GAPI)	150	0.2	RLL3 (Ohm-m)	2000
-100	SP (mV)	100	0.2	DEEP INDUCTION (Ohm-m)	2000
-250	RxoRt	50	0.2	MEDIUM INDUCTION (Ohm-m)	2000
0	MINMK	20			





0	GAMMA RAY (GAPI)	150
-100	SP (mV)	100
-250	RxoRt	50
0	MINMK	20

850

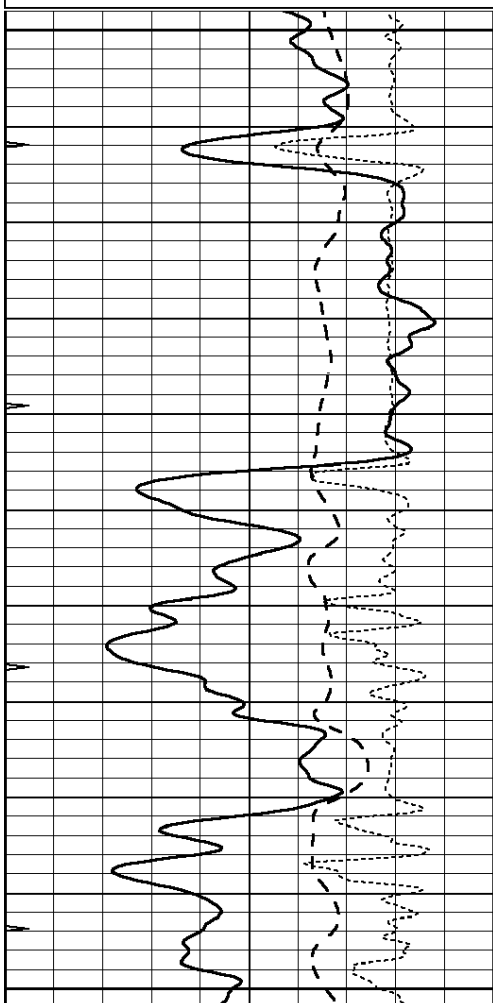


0.2	RLL3 (Ohm-m)	2000
0.2	DEEP INDUCTION (Ohm-m)	2000
0.2	MEDIUM INDUCTION (Ohm-m)	2000

Database File: 010181ddn.db  
 Dataset Pathname: pass3.2  
 Presentation Format: \_dil  
 Dataset Creation: Sat May 25 23:40:53 2013 by Calc Open-Cased 090629  
 Charted by: Depth in Feet scaled 1:240

0	GAMMA RAY (GAPI)	150
-100	SP (mV)	100
-250	RxoRt	50
0	MINMK	20

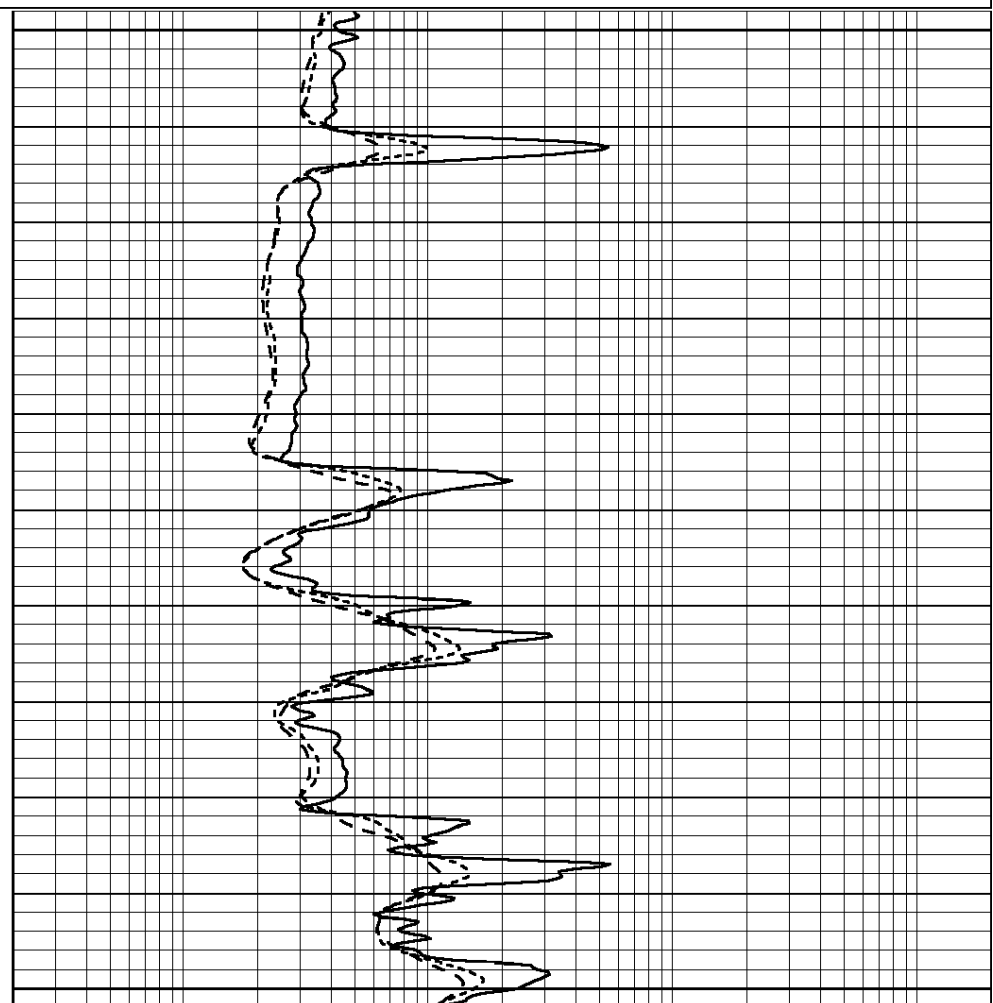
0.2	RLL3 (Ohm-m)	2000
0.2	DEEP INDUCTION (Ohm-m)	2000
0.2	MEDIUM INDUCTION (Ohm-m)	2000

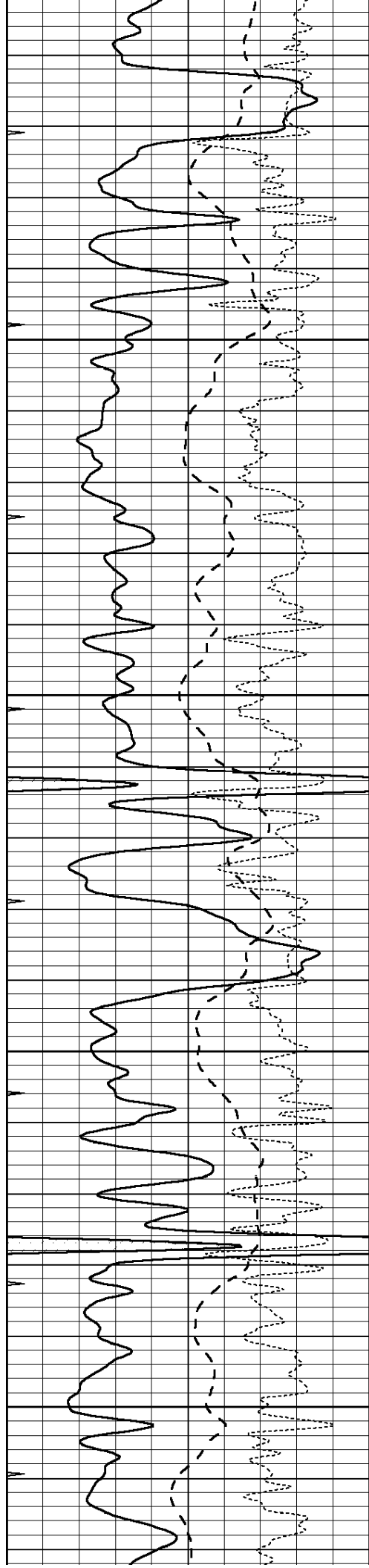


2650

2700

2750



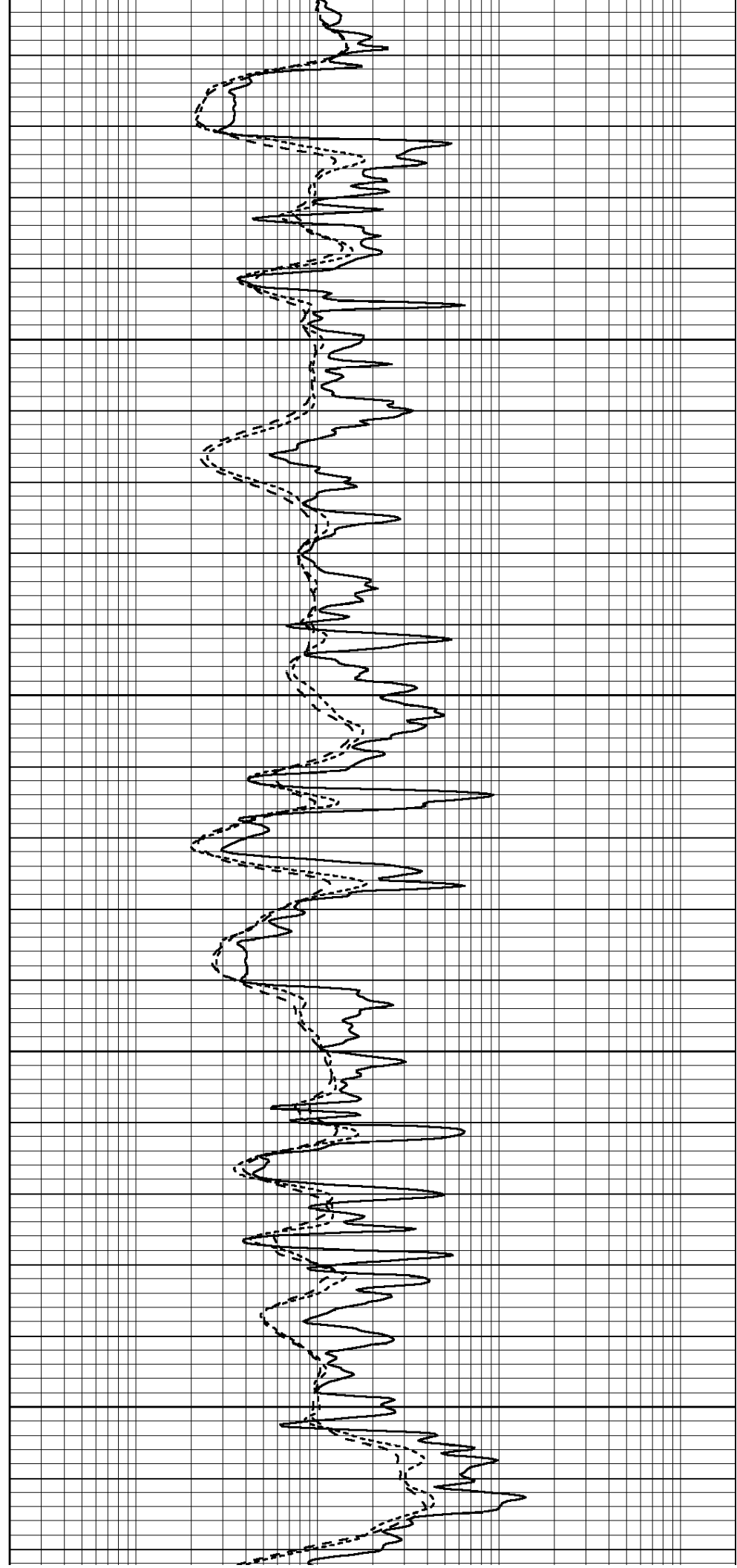


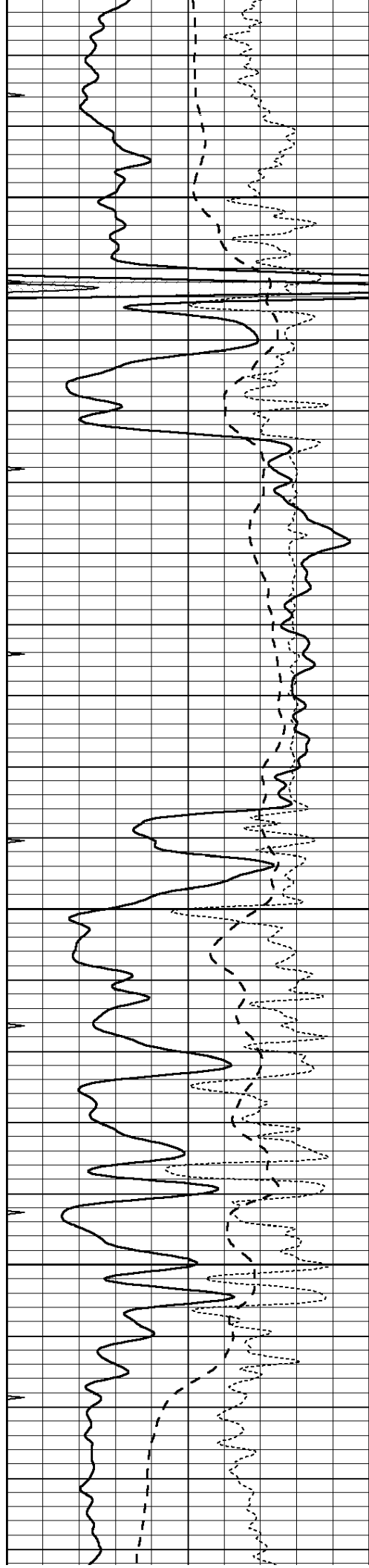
2800

2850

2900

2950



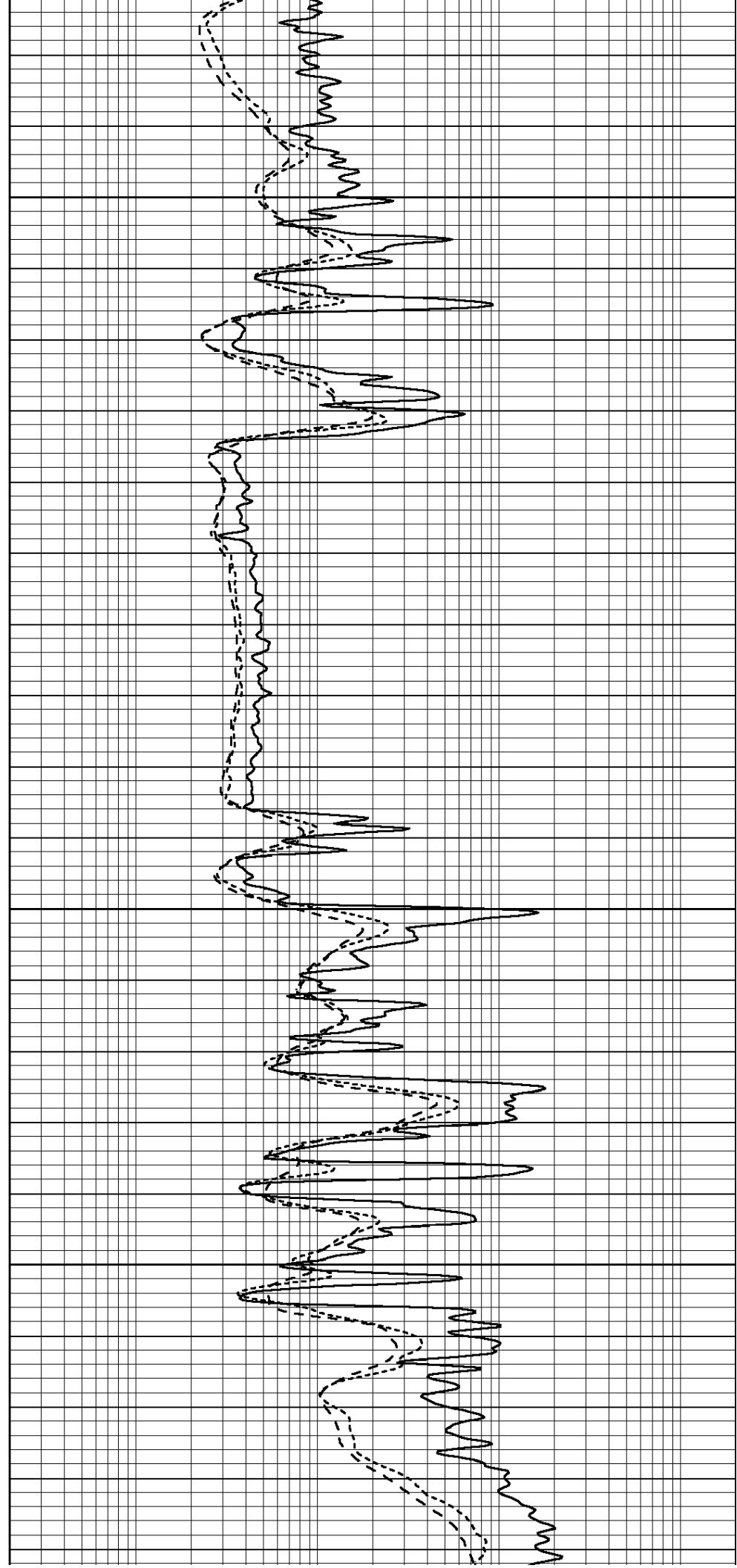


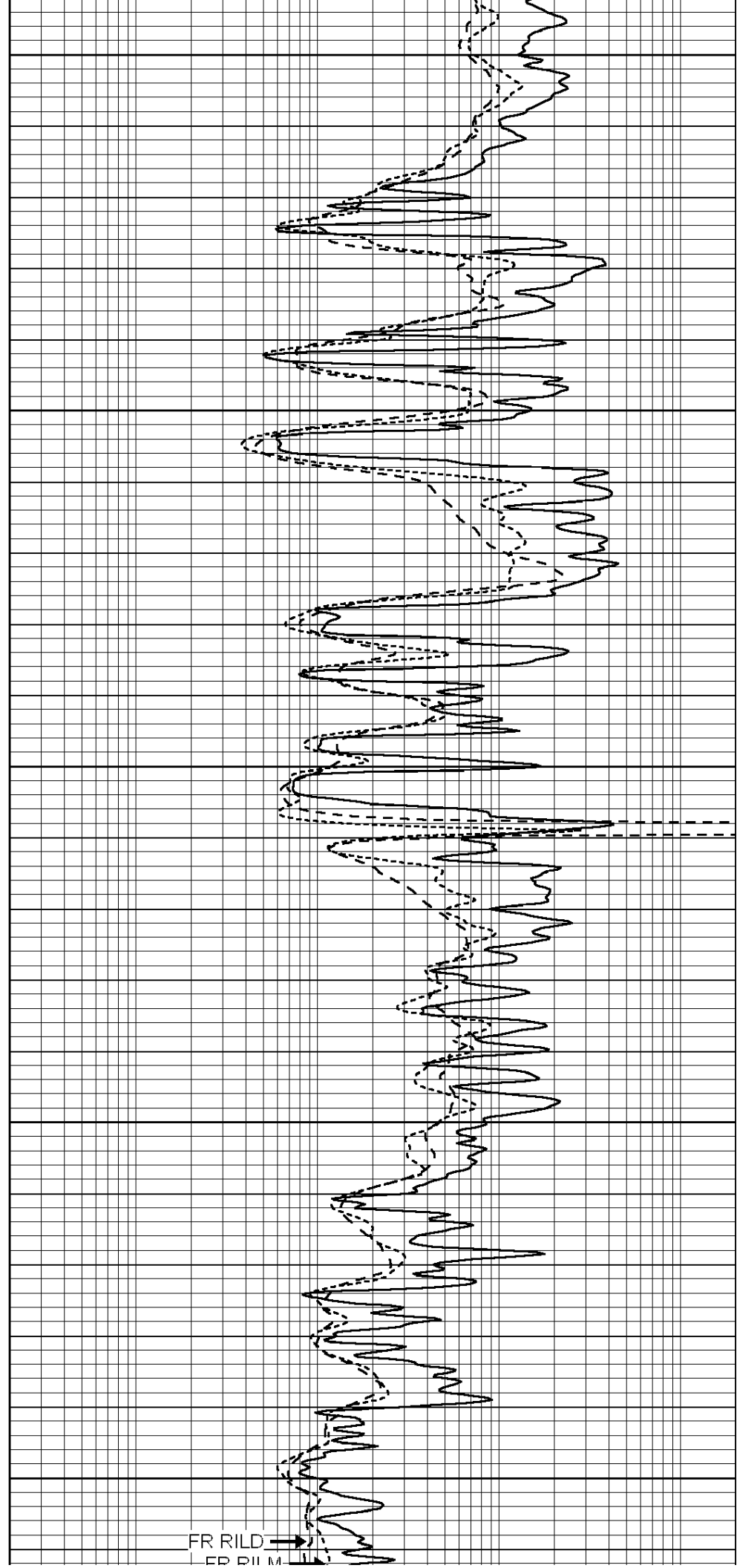
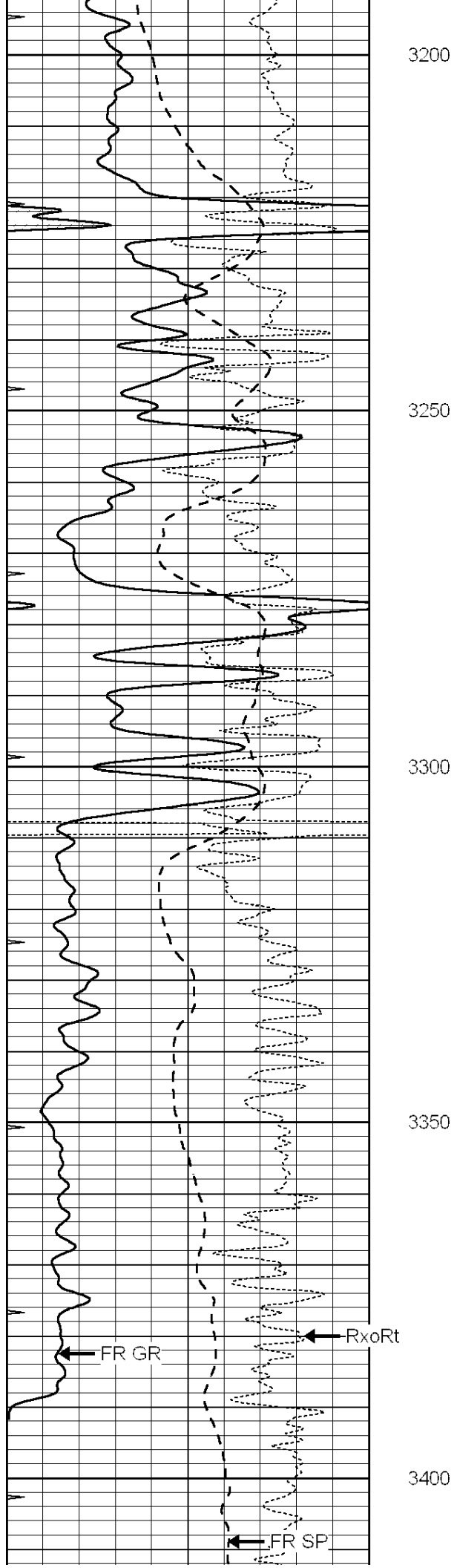
3000

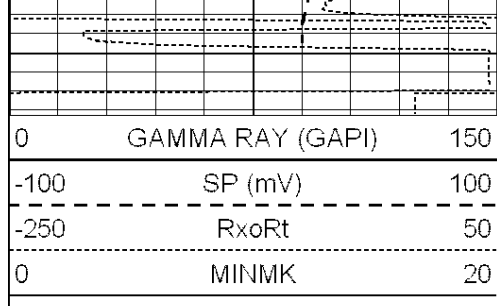
3050

3100

3150

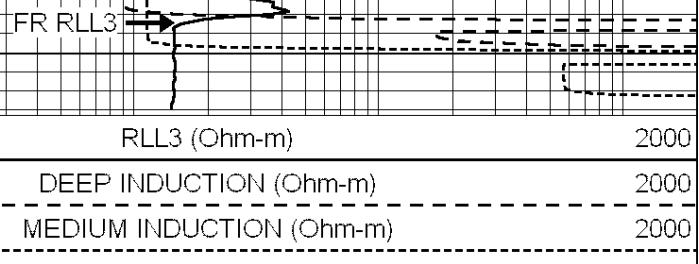






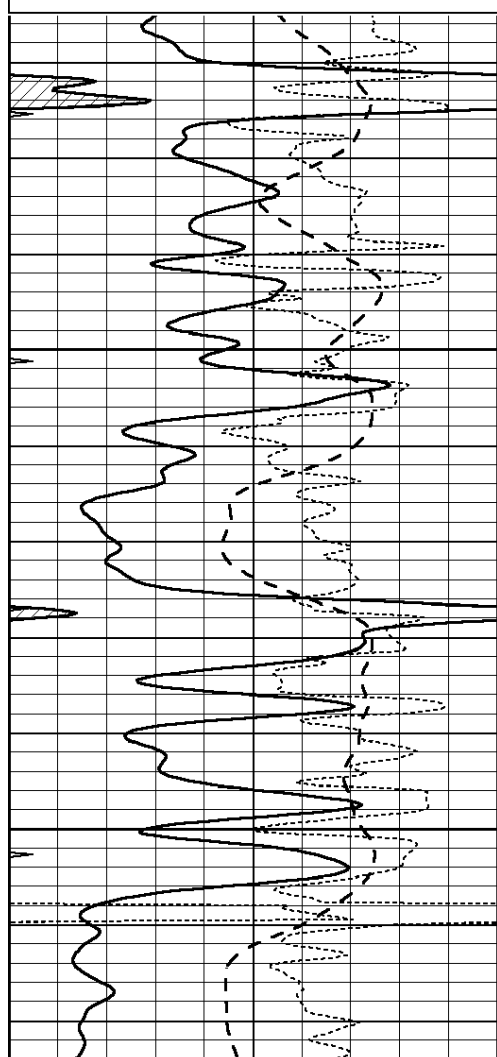
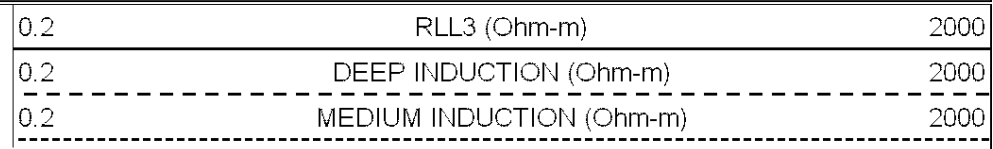
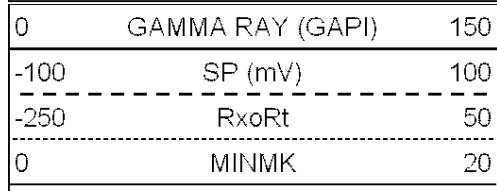
LTD 3419

FR VIEW



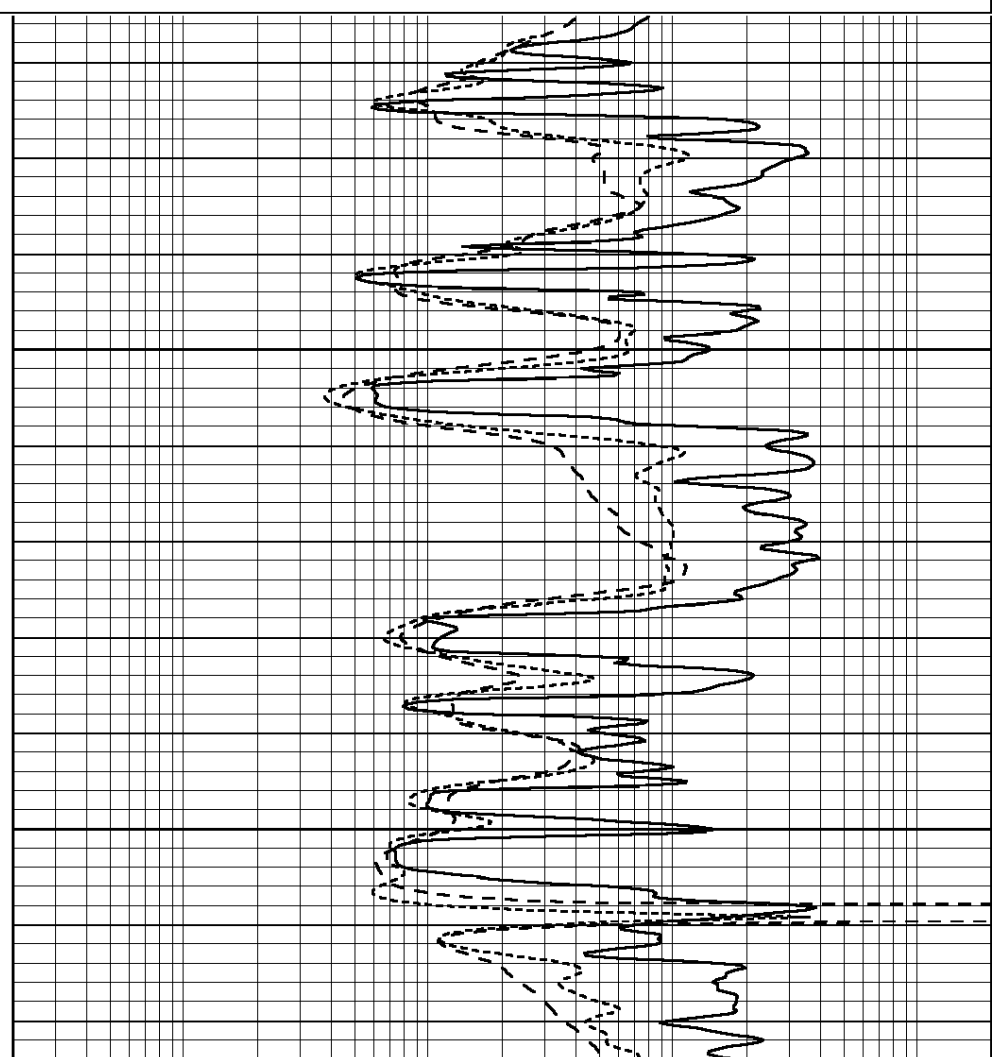
# REPEAT SECTION

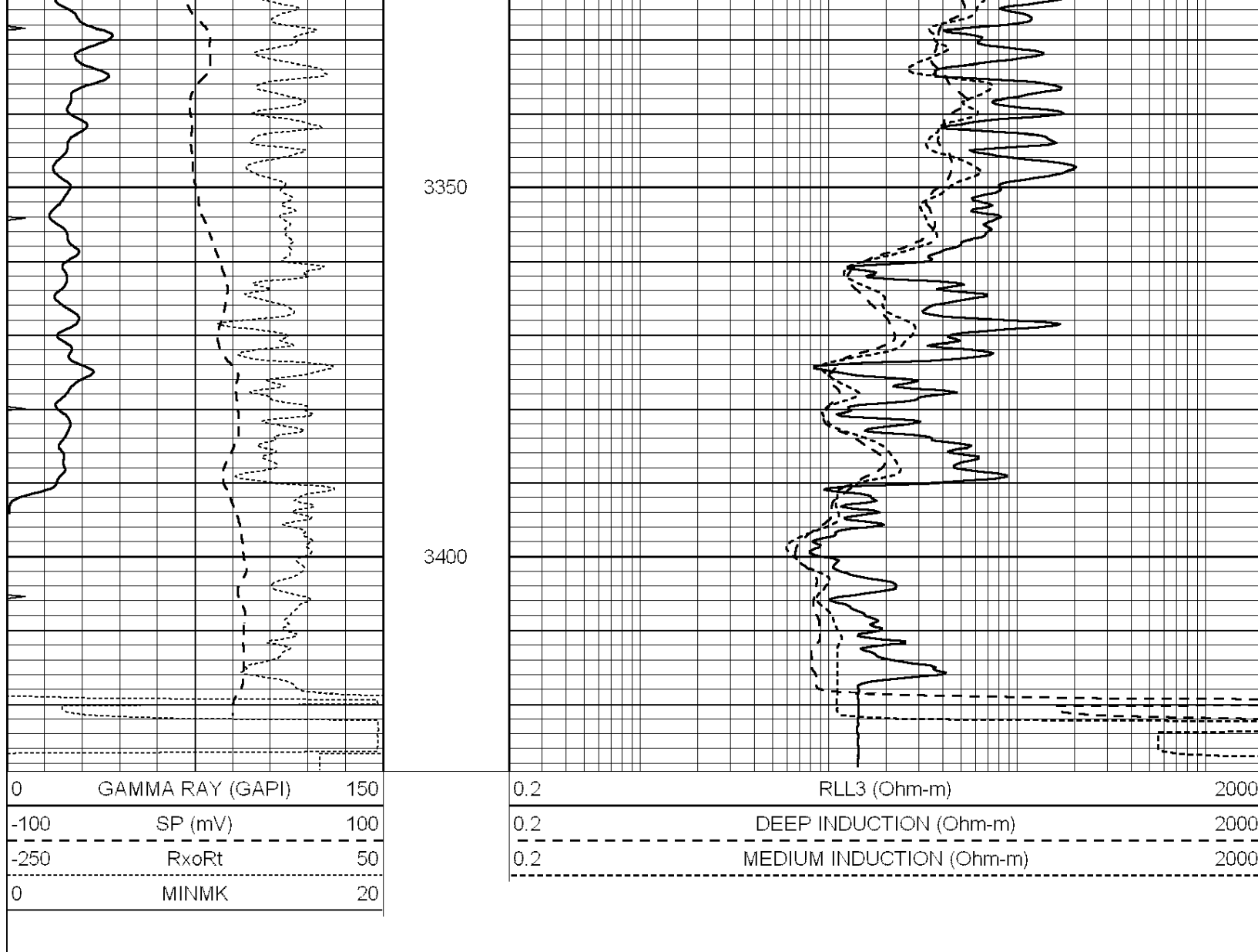
Database File: 010181ddn.db  
 Dataset Pathname: pass2.4  
 Presentation Format: \_dil  
 Dataset Creation: Sat May 25 23:45:37 2013 by Calc Open-Cased 090629  
 Charted by: Depth in Feet scaled 1:240



3250

3300





### Calibration Report

Database File: 010181ddn.db  
 Dataset Pathname: pass3.5  
 Dataset Creation: Sun May 26 00:51:59 2013 by Calc Open-Cased 090629

### Dual Induction Calibration Report

Serial-Model: PROBE7-DILG  
 Surface Cal Performed: Sun May 19 13:30:40 2013  
 Downhole Cal Performed: Sat Jan 19 19:51:38 2013  
 After Survey Verification Performed: Sat Jan 19 19:51:38 2013

#### Surface Calibration

Loop:	Readings			References			Results	
	Air	Loop	V	Air	Loop	mmho/m	m	b
Deep	0.793	0.790	V	0.000	400.000	mmho/m	620.000	7.000
Medium	0.992	1.002	V	0.000	464.000	mmho/m	660.000	-38.000
Internal:	Zero	Cal		Zero	Cal		m	b
Deep	0.041	0.642	V	0.000	400.000	mmho/m	664.874	-27.011
Medium	0.035	0.802	V	0.000	464.000	mmho/m	604.936	-21.367

#### Downhole Calibration

Readings References Results

	Readings			References			Results	
	Zero	Cal		Zero	Cal		m'	b'
Deep	135384.000	27094.500	mmho/m	135400.000	27082.400	mmho/m	1.000	-19.259
Medium	-47330.100	-9381.740	mmho/m	-47327.100	-9389.280	mmho/m	1.000	-10.154
LL3		7.322	V		1400.000	Ohm-m		
		0.038	V		20.000	Ohm-m		
		-7.273	V		4000.000	mmho-m		

After Survey Verification								
	Readings			Targets			Results	
	Zero	Cal		Zero	Cal		m'	b'
Deep	0.000	0.000	mmho/m	135384.000	27094.500	mmho/m	1.000	0.000
Medium	0.000	0.000	mmho/m	-47330.100	-9381.740	mmho/m	1.000	0.000
LL3		0.000	Ohm-m		1400.000	Ohm-m		
		0.000	Ohm-m		20.000	Ohm-m		
		0.000	mmho-m		4000.000	mmho-m		

Compensated Density Calibration Report

Serial-Model:	GEAR1-GEARHART
Source / Verifier:	147 / 147
Master Calibration Performed:	Mon May 13 17:25:39 2013

Master Calibration						
	Density		Far Detector	Near Detector		
Magnesium	1.710	g/cc	1205.77	610.74	cps	
Aluminum	2.600	g/cc	271.21	419.72	cps	
Spine Angle = 75.89			Density/Spine Ratio = 0.579			
	Size		Reading			
Small Ring	7.70	in	4.69	V		
Large Ring	14.00	in	6.52	V		

Compensated Neutron Calibration Report

Serial Number:	NEU_4I
Tool Model:	G

CALIBRATION						
Detector	Readings		Target		Normalization	
Short Space	1.00	cps	1.00	cps	1.0000	
Long Space	1.00	cps	1.00	cps	1.0000	

Gamma Ray Calibration Report

Serial Number:	GR1
Tool Model:	OPEN
Performed:	Mon May 20 17:04:25 2013
Calibrator Value:	1.0 GAPI
Background Reading:	0.0 cps
Calibrator Reading:	1.0 cps
Sensitivity:	0.9000 GAPI/cps