



**COMPLETION
& PRODUCTION
SERVICES CO.**

**MICRO
LOG**

Company SHELBY RESOURCES, LLC.
Well SCHLESSIGER CATTLE #1-2
Field BOYD
County BARTON State KANSAS

Company SHELBY RESOURCES, LLC.
Well SCHLESSIGER CATTLE #1-2
Field BOYD
County BARTON
State KANSAS

Location: API #: 15-009-25833-00-00
SEC 2 TWP 18S RGE 14W
2138' FNL & 330' FEL
N/2 - SE - SE - NE
Permanent Datum GROUND LEVEL Elevation 1833
Log Measured From KELLY BUSHING 9' A.G.L.
Drilling Measured From KELLY BUSHING
Other Services
CDL/CNL
DIL/SON
Elevation
K.B. 1842
D.F. 1840
G.L. 1833

Date	5/25/13		
Run Number	TWMO		
Depth Driller	3420		
Depth Logger	3419		
Bottom Logged Interval	3401		
Top Log Interval	2650		
Casing Driller	804		
Casing Logger	804		
Bit Size	7.875		
Type Fluid in Hole	CHEMICAL MUD	CHLORIDES 6.400	
Density / Viscosity	9.1 / 71		
pH / Fluid Loss	9.5 / 8.8		
Source of Sample	FLOWLINE		
Rim @ Meas. Temp	0.65 @ 80F		
Rmf @ Meas. Temp	0.49 @ 80F		
Rmc @ Meas. Temp	0.78 @ 80F		
Source of Rmf / Rmc	MEASURED		
Rim @ BHT	0.4 @ 111F		
Time Circulation Stopped	2 HOURS		
Time Logger on Bottom			
Maximum Recorded Temperature	111F		
Equipment Number	860		
Location	HAYS, KS.		
Recorded By	JEFF GRONIEWEG		
Witnessed By	JEREMY SCHWARTZ		

<<< Fold Here >>>

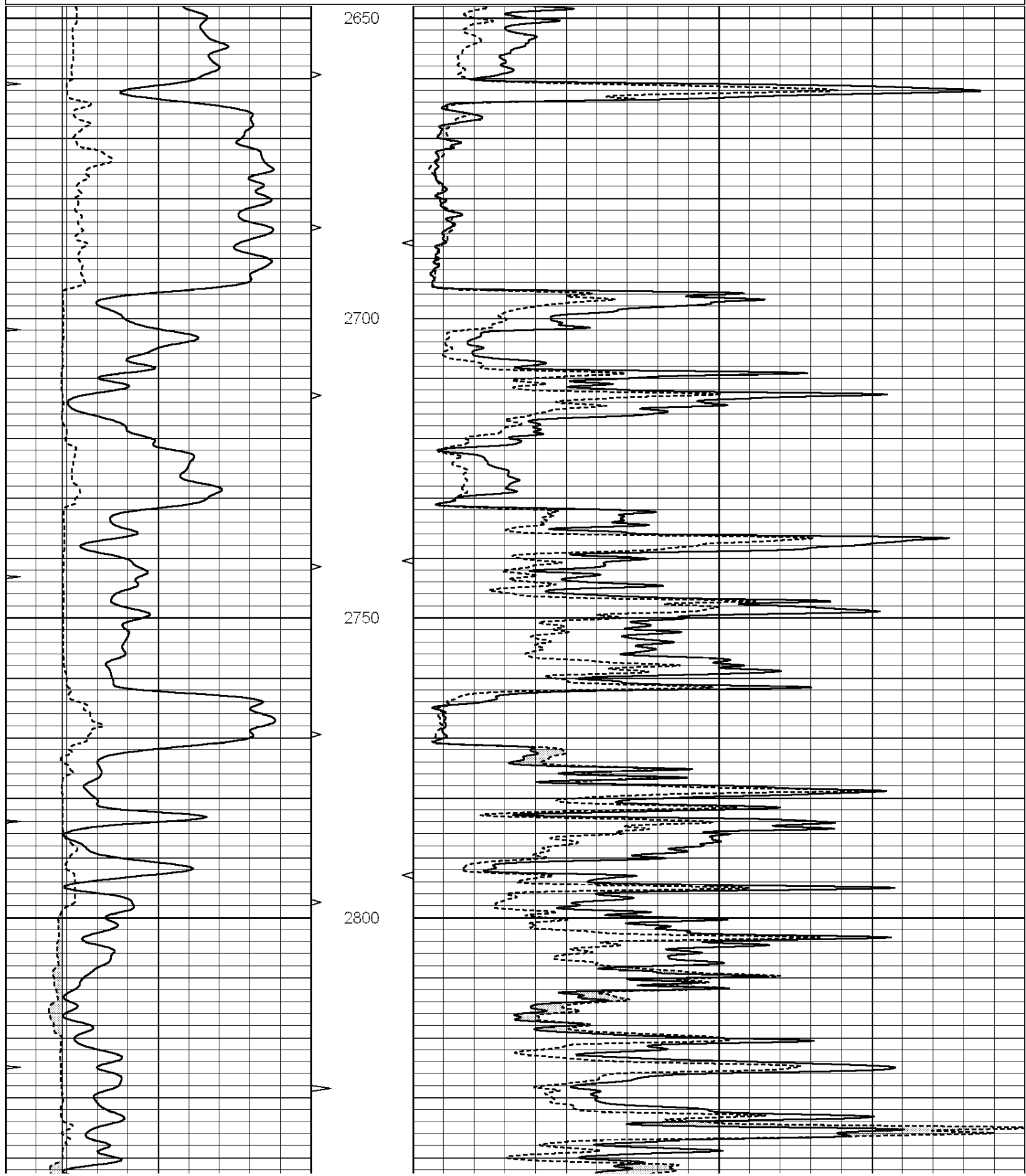
All interpretations are opinions based on inferences from electrical or other measurements and we cannot and do not guarantee the accuracy or correctness of any interpretation, and we shall not, except in the case of gross or willful negligence on our part, be liable or responsible for any loss, costs, damages, or expenses incurred or sustained by anyone resulting from any interpretation made by any of our officers, agents or employees. These interpretations are also subject to our general terms and conditions set out in our current Price Schedule.

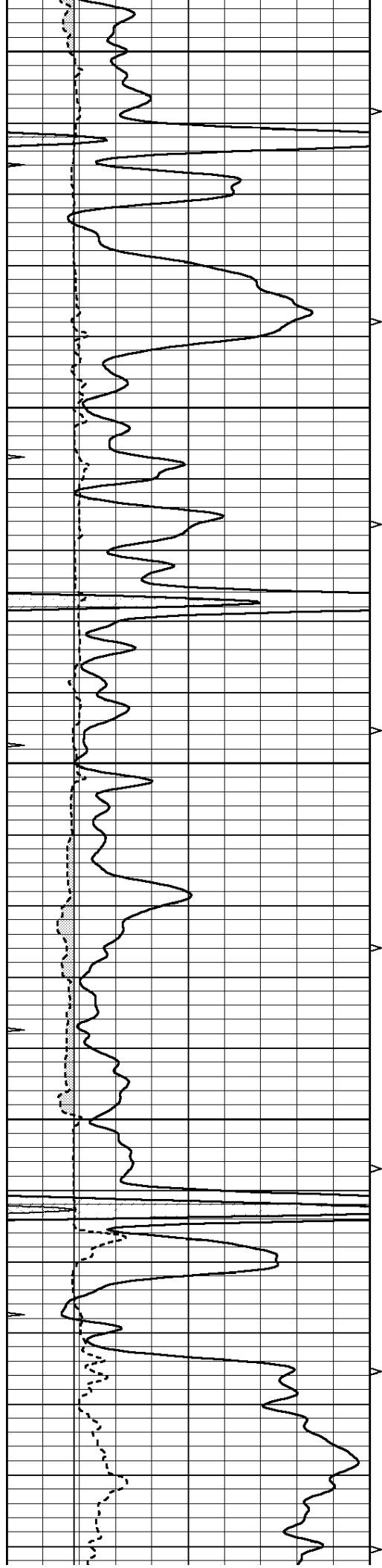
Comments

NABORS COMPLETION & PRODUCTION SERVICES
785-628-6395
THANK YOU FOR YOUR BUSINESS
DIRECTIONS: RUSSELL, KS - SOUTH TO INTERSECTION OF HWYS 4 & 281
2 MILES SOUTH TO RD 100 - 1 MILE EAST TO RD 30 - 1/2 MILE NORTH - WEST INTO

0	GAMMA RAY (GAPI)	150
6	MELCAL (in)	16
0	MINMK	20

0	MEL1.5 (Ohm-m)	40
0	MEL2.0 (Ohm-m)	40





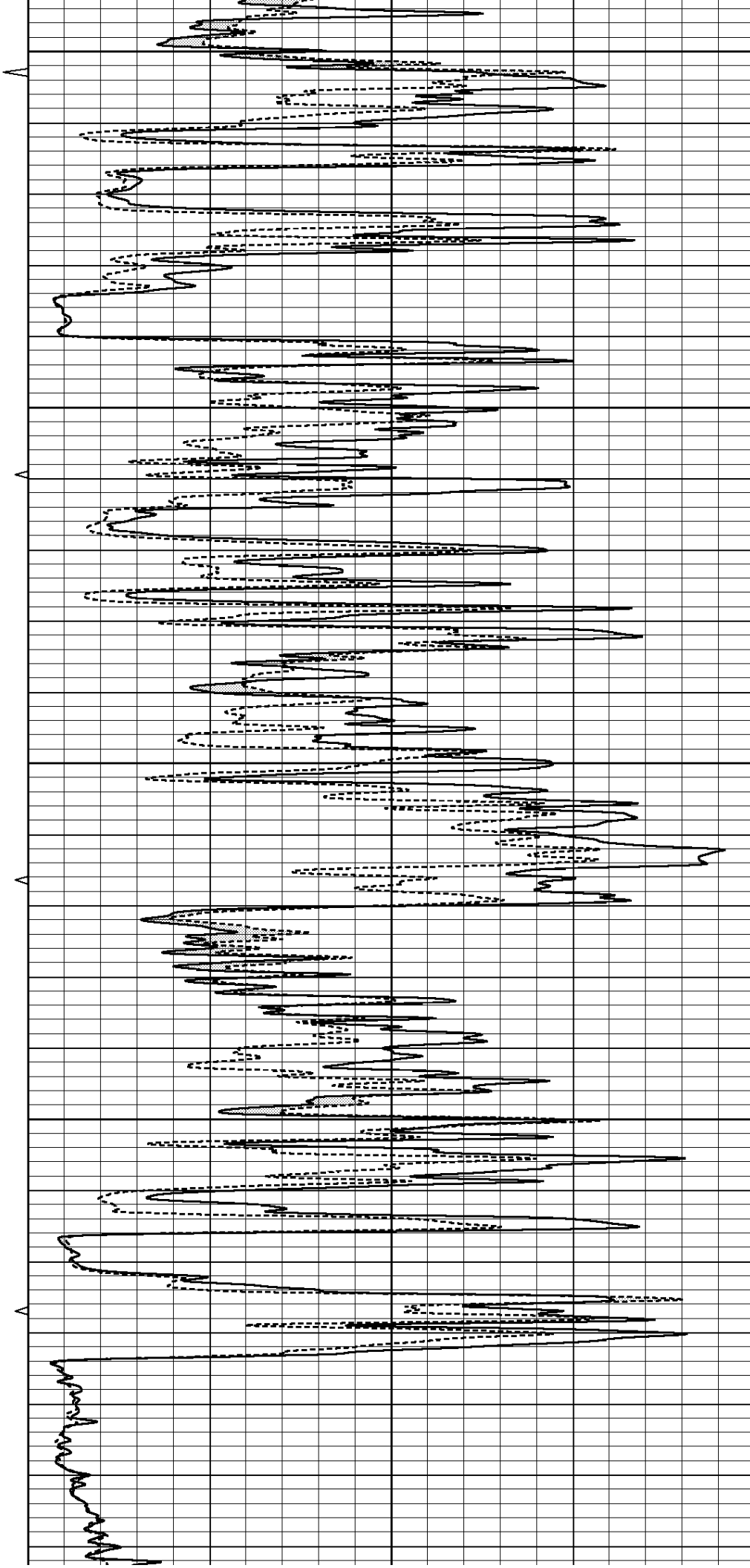
2850

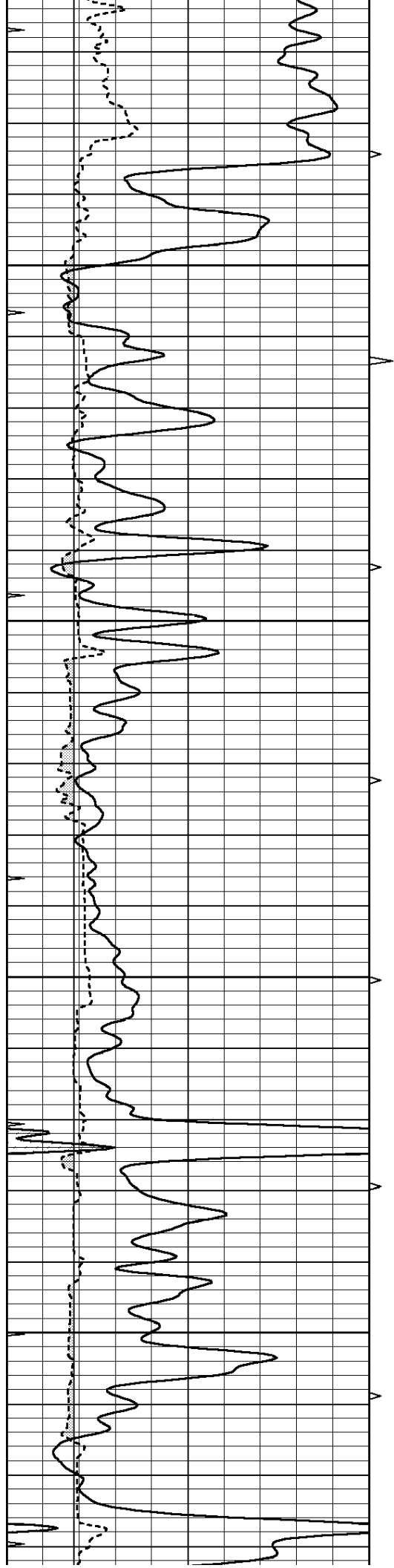
2900

2950

3000

3050



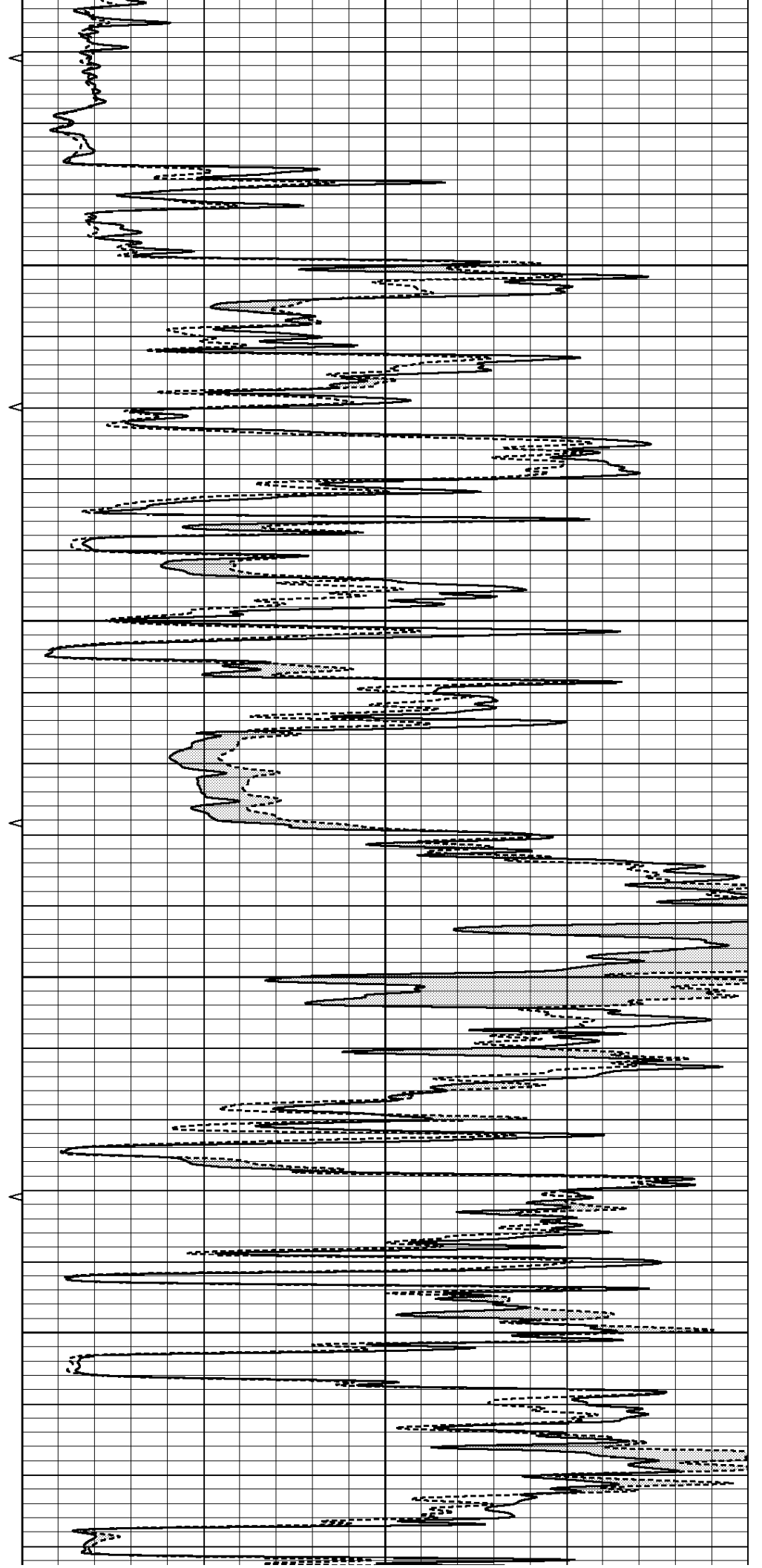


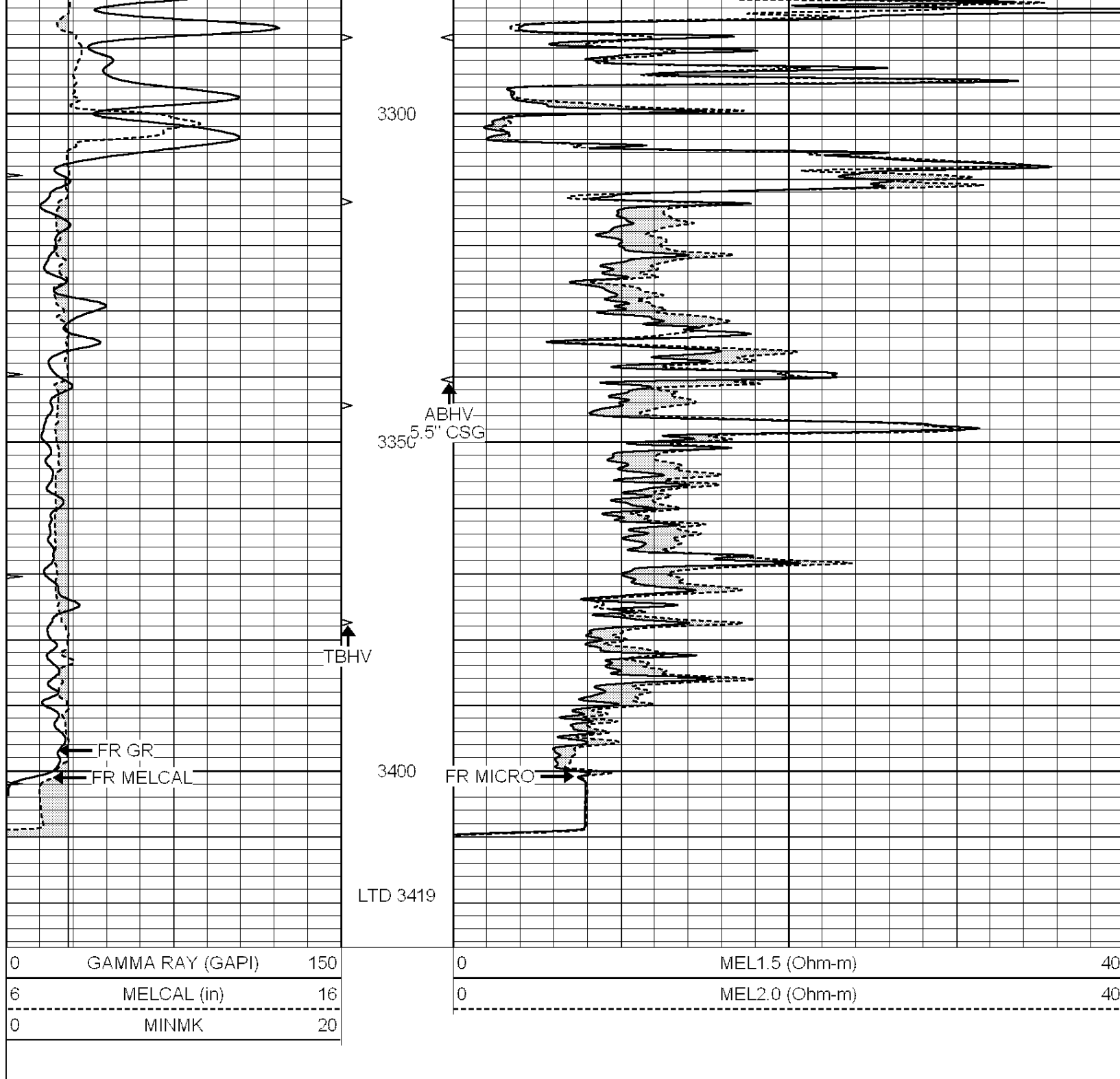
3100

3150

3200

3250



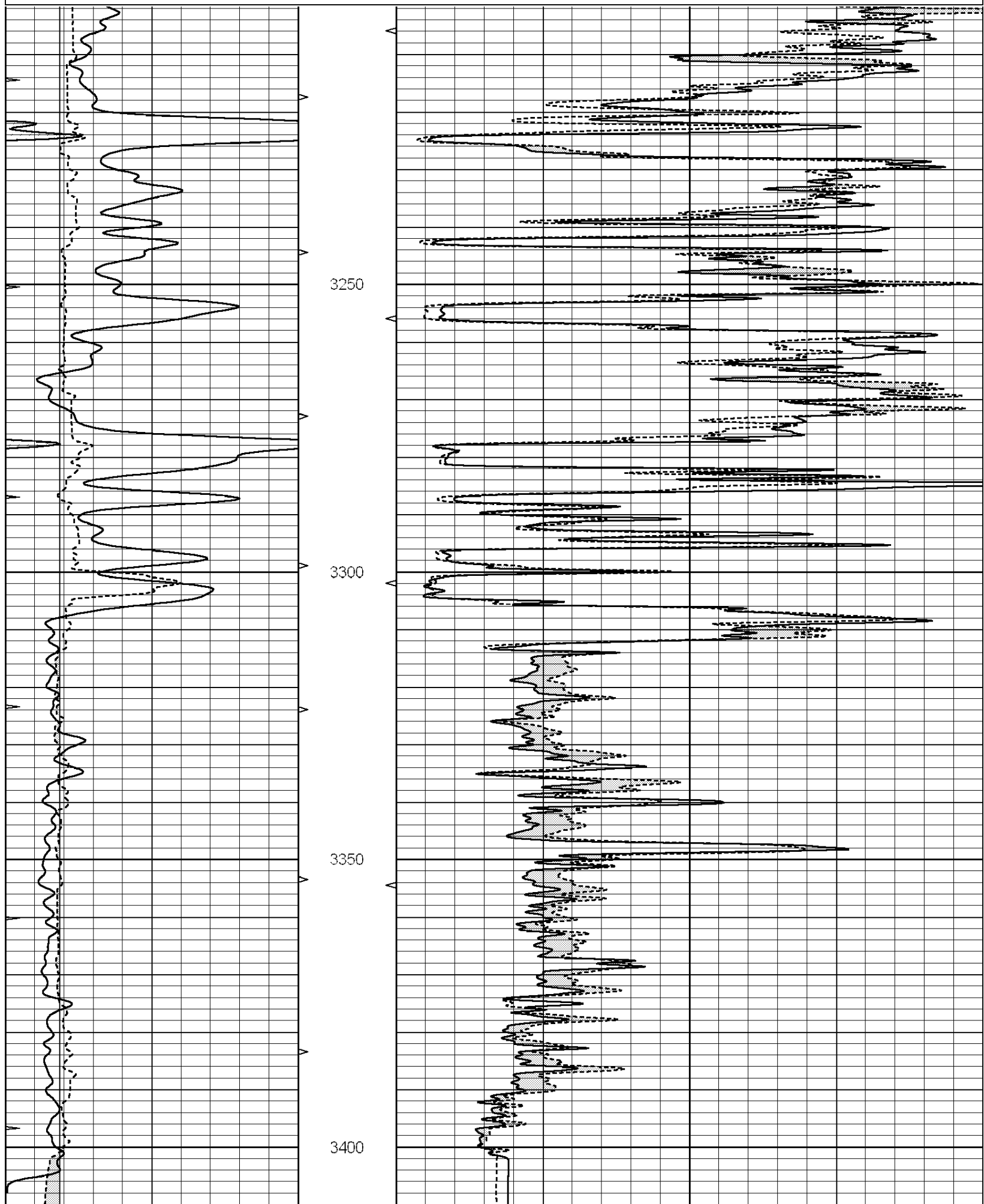


NABORS
COMPLETION & PRODUCTION SERVICES CO.

REPEAT SECTION

Database File: 010181ddn.db
 Dataset Pathname: pass5.3
 Presentation Format: _micro
 Dataset Creation: Sun May 26 01:17:25 2013 by Calc Open-Cased 090629
 Charted by: Depth in Feet scaled 1:240

0	GAMMA RAY (GAPI)	150	0	MEL1.5 (Ohm-m)	40
6	MELCAL (in)	16	0	MEL2.0 (Ohm-m)	40



0	GAMMA RAY (GAPI)	150
6	MELCAL (in)	16
0	MINMK	20

0	MEL1.5 (Ohm-m)	40
0	MEL2.0 (Ohm-m)	40

Calibration Report

Database File: 010181ddn.db
 Dataset Pathname: pass6.1
 Dataset Creation: Sun May 26 01:14:13 2013 by Calc Open-Cased 090629

MICRO Calibration Report

Serial Number: MICRO4
 Tool Model: PROBE
 Performed: Sun May 19 15:13:16 2013

Caliper Calibration: Gain=2.725 Offset=-6.914

References	Low Cal	High Cal
Readings	8.500	14.000
	5.584	7.602

1.5" Calibration: Gain=25.000 Offset=-0.800

References	Low Cal	High Cal
Readings	0.000	20.000
	0.009	1.541

2" Calibration: Gain=30.000 Offset=-0.500

References	Low Cal	High Cal
Readings	0.000	20.000
	0.004	1.198

Gamma Ray Calibration Report

Serial Number: GR2
 Tool Model: OPEN
 Performed: Sat Jan 19 22:43:37 2013

Calibrator Value: 200.0 GAPI

Background Reading: 0.0 cps
 Calibrator Reading: 740.0 cps

Sensitivity: 0.9000 GAPI/cps