



**COMPLETION
& PRODUCTION
SERVICES CO.**

**COMPENSATED
DENSITY / NEUTRON
LOG**

Company SHELBY RESOURCES, LLC.
Well SCHLESSIGER CATTLE #1-2
Field BOYD
County BARTON State KANSAS

Location: API #: 15-009-25833-00-00

SEC 2 TWP 18S RGE 14W
2138' FNL & 330' FEL
N/2 - SE - SE - NE

Other Services
DIL
MEL/SON

Permanent Datum GROUND LEVEL Elevation 1833
Log Measured From KELLY BUSHING 9' A.G.L.
Drilling Measured From KELLY BUSHING

Elevation
K.B. 1842
D.F. 1840
G.L. 1833

Date	5/25/13		
Run Number	ONE		
Depth Driller	3420		
Depth Logger	3419		
Bottom Logged Interval	3395		
Top Log Interval	2650		
Casing Driller	792		
Casing Logger			
Bit Size	7.875		
Type Fluid in Hole	CHEMICAL MUD	CHLORIDES 6.400	
Density / Viscosity	9.1 / 71		
pH / Fluid Loss	9.5 / 8.8		
Source of Sample	FLOWLINE		
Rim @ Meas. Temp	0.65 @ 80F		
Rmf @ Meas. Temp	0.49 @ 80F		
Rmc @ Meas. Temp	0.78 @ 80F		
Source of Rmf / Rmc	MEASURED		
Rim @ BHT	0.4 @ 111F		
Time Circulation Stopped	2 HOURS		
Time Logger on Bottom			
Maximum Recorded Temperature	111F		
Equipment Number	860		
Location	HAYS, KS.		
Recorded By	JEFF GRONEWEG		
Witnessed By	JEREMY SCHWARTZ		

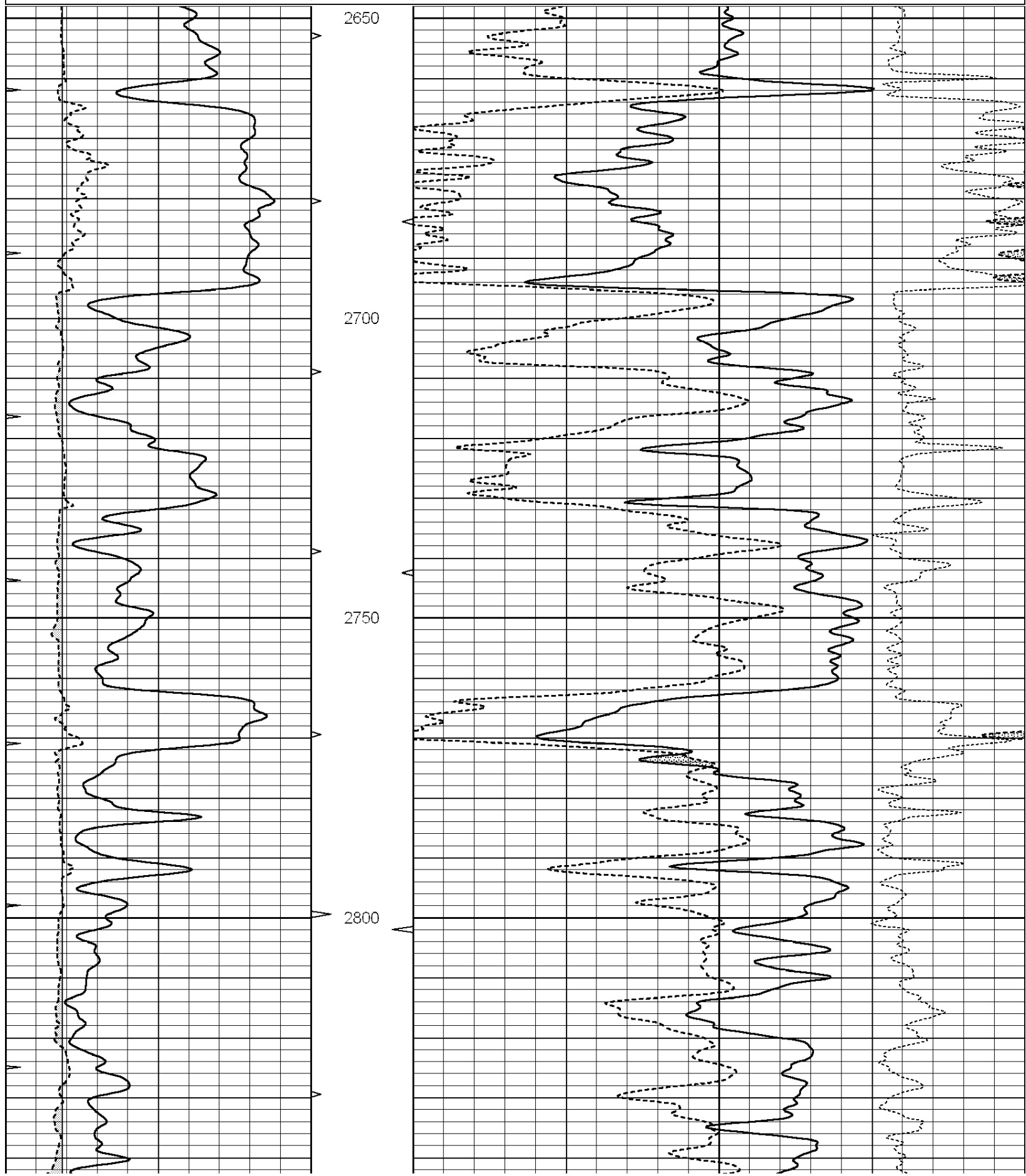
<<< Fold Here >>>

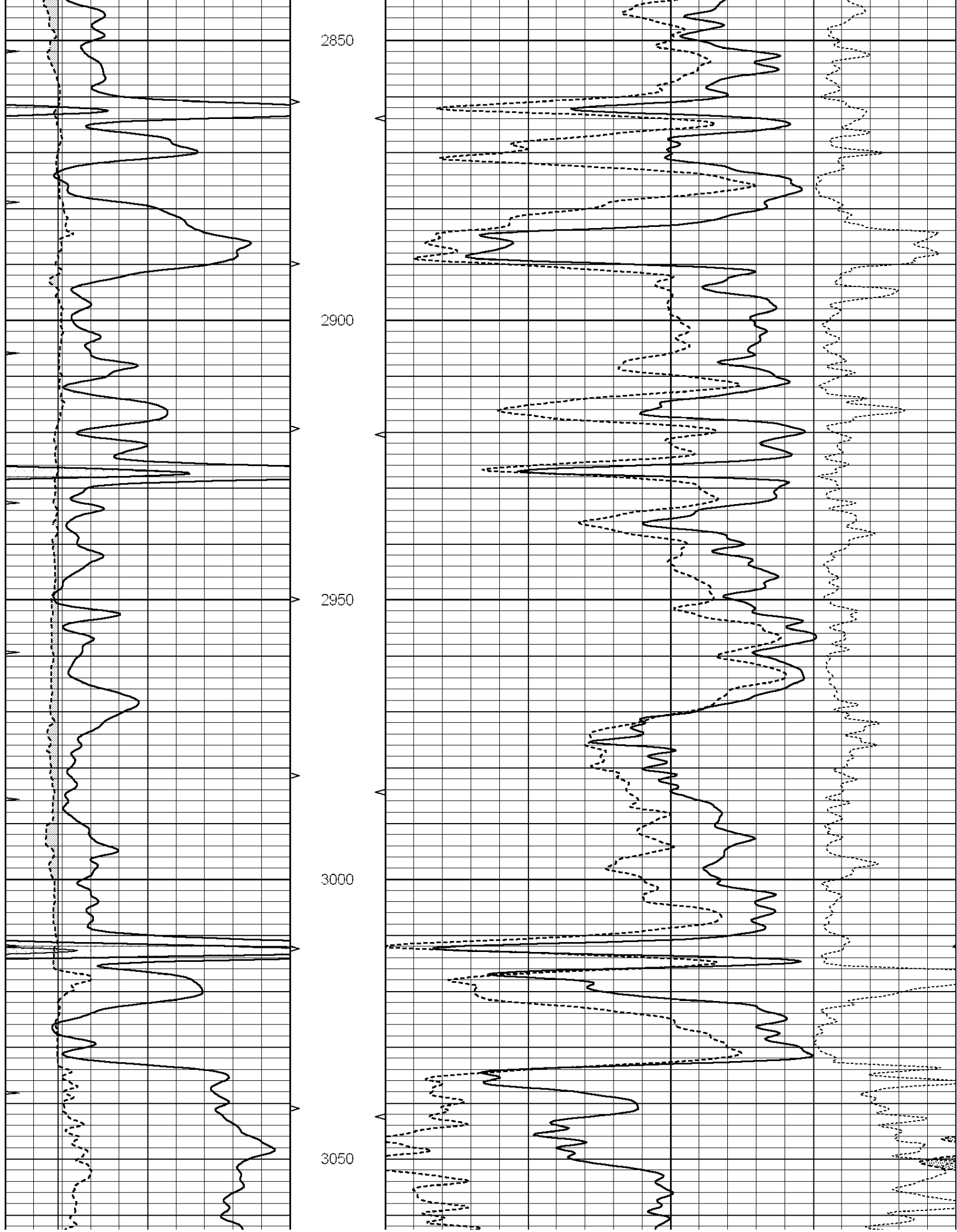
All interpretations are opinions based on inferences from electrical or other measurements and we cannot and do not guarantee the accuracy or correctness of any interpretation, and we shall not, except in the case of gross or willful negligence on our part, be liable or responsible for any loss, costs, damages, or expenses incurred or sustained by anyone resulting from any interpretation made by any of our officers, agents or employees. These interpretations are also subject to our general terms and conditions set out in our current Price Schedule.

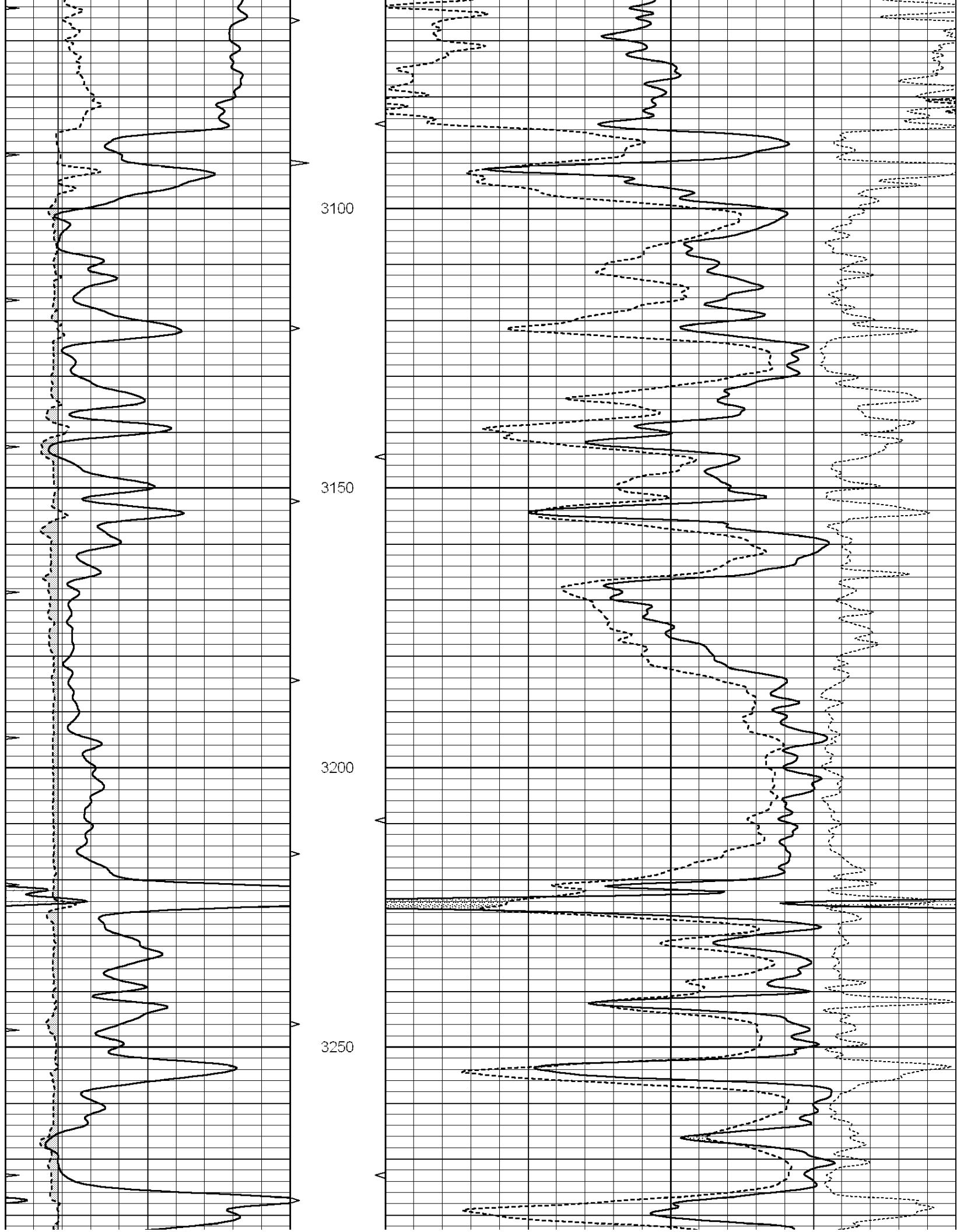
Comments

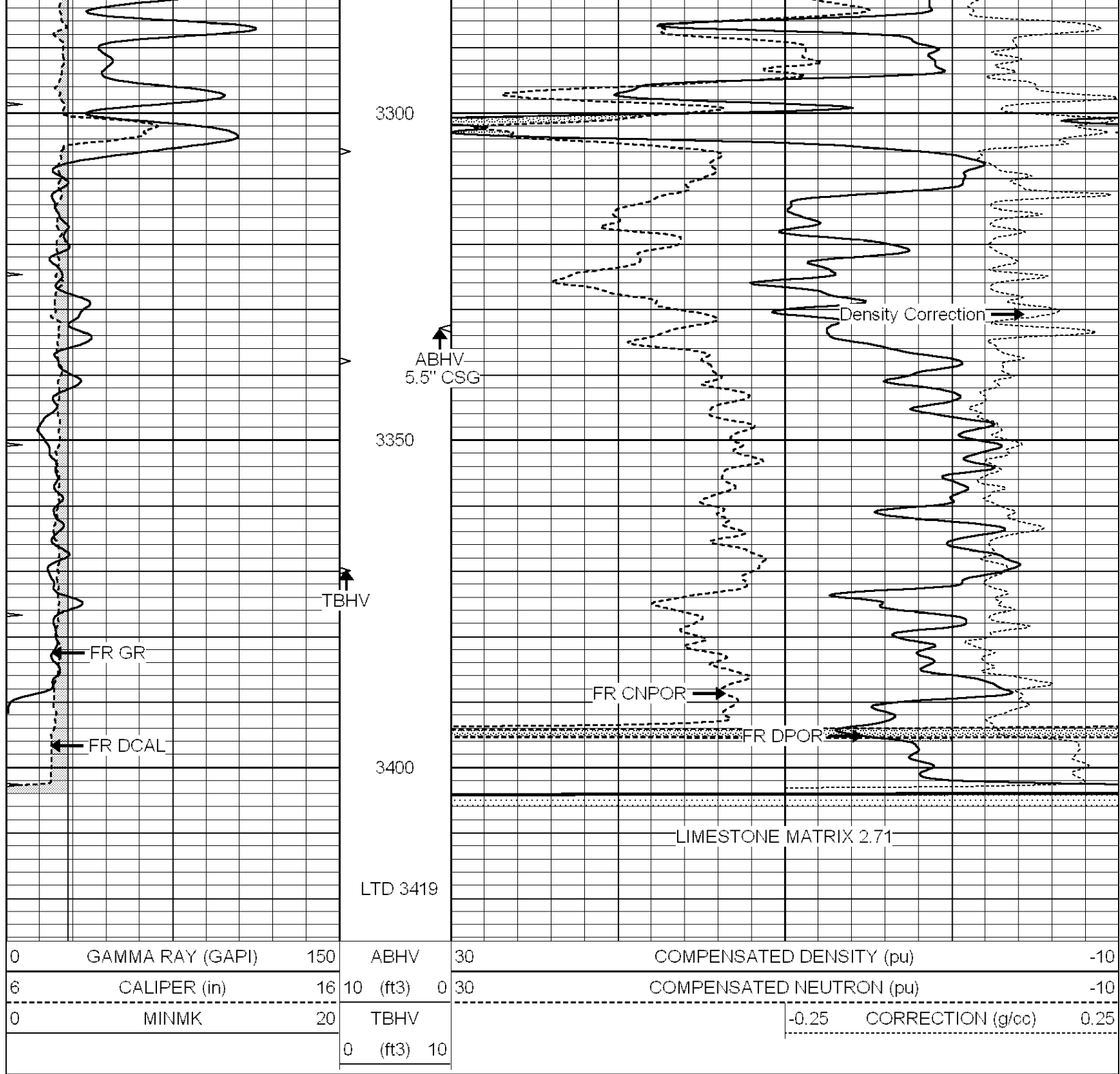
NABORS COMPLETION & PRODUCTION SERVICES
785-628-6395
THANK YOU FOR YOUR BUSINESS
DIRECTIONS: RUSSELL, KS - SOUTH TO INTERSECTION OF HWYS 4 & 281
2 MILES SOUTH TO RD 100 - 1 MILE EAST TO RD 30 - 1/2 MILE NORTH - WEST INTO

0	GAMMA RAY (GAPI)	150	ABHV	30	COMPENSATED DENSITY (pu)	-10
6	CALIPER (in)	16	10 (ft3)	0 30	COMPENSATED NEUTRON (pu)	-10
0	MINMK	20	TBHV		-0.25 CORRECTION (g/cc)	0.25
			0 (ft3)	10		









NABORS
COMPLETION & PRODUCTION SERVICES CO.

REPEAT SECTION

Database File: 010181ddn.db
 Dataset Pathname: pass2.4
 Presentation Format: _den_neu
 Dataset Creation: Sat May 25 23:45:37 2013 by Calc Open-Cased 090629
 Charted by: Depth in Feet scaled 1:240

0	GAMMA RAY (GAPI)	150	ABHV	30	COMPENSATED DENSITY (pu)	-10	
6	CALIPER (in)	16	10 (ft3)	0	30	COMPENSATED NEUTRON (pu)	-10

MINMK

20

TBHV

-0.25

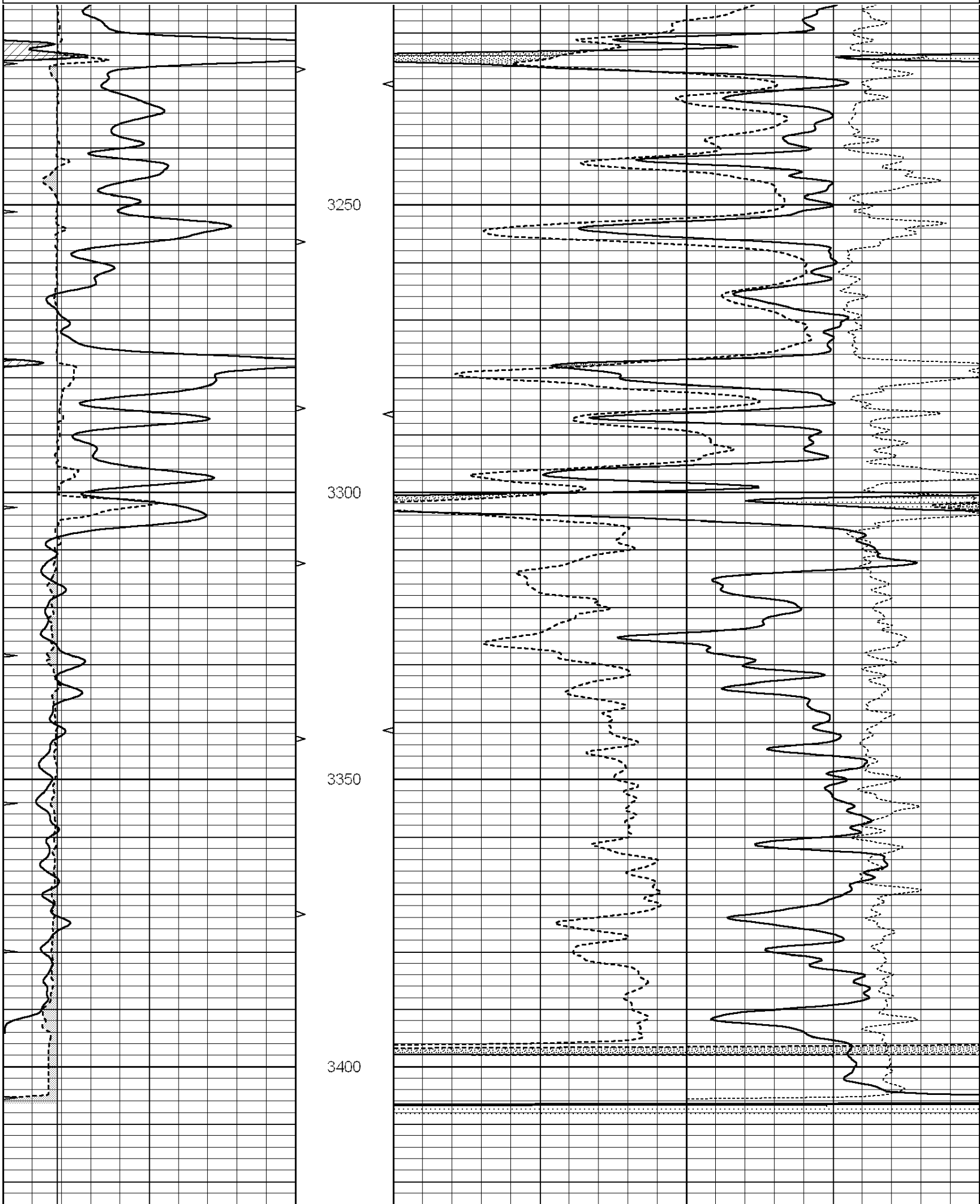
CORRECTION (g/cc)

0.25

0

(ft3)

10



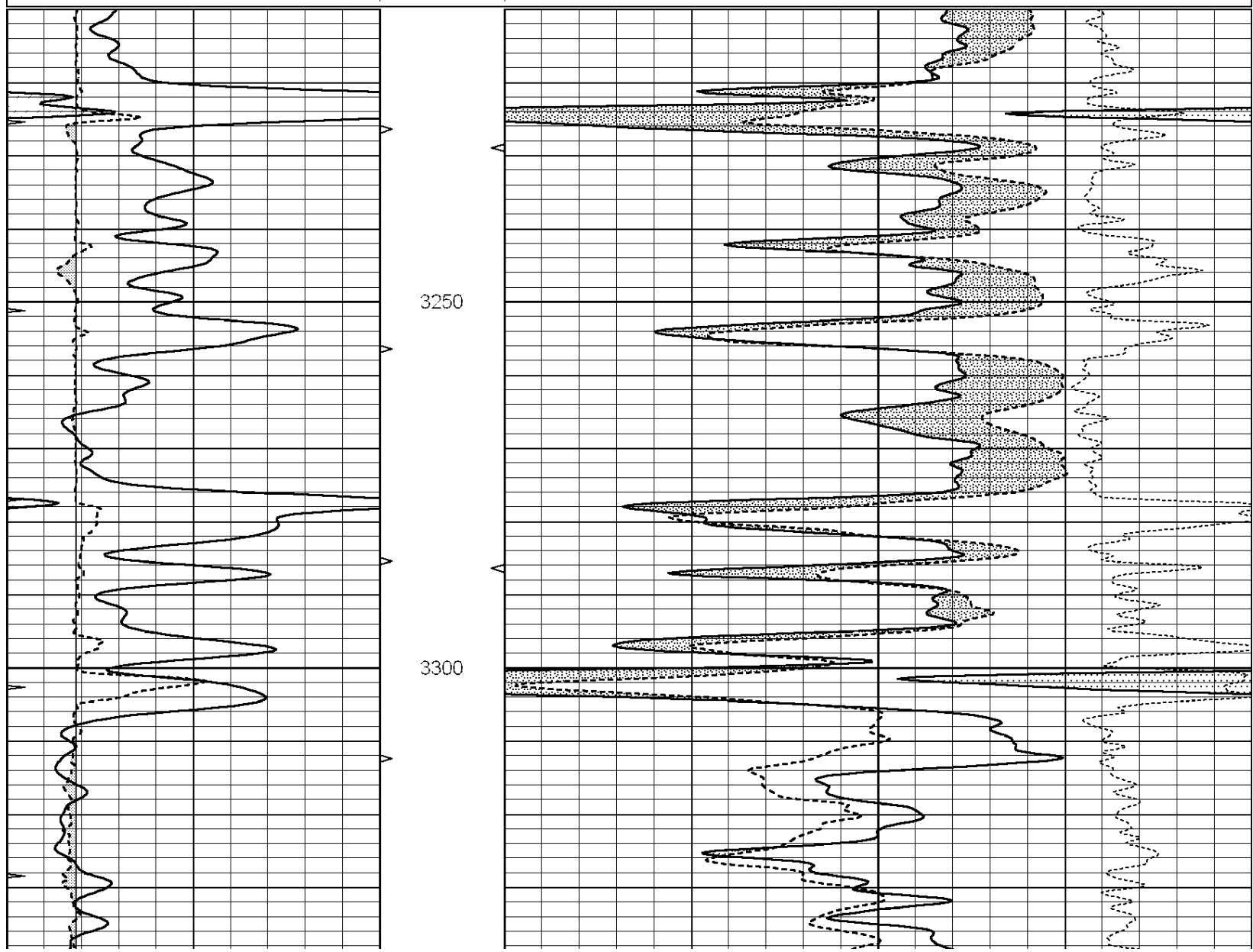
0	GAMMA RAY (GAPI)	150	ABHV	30	COMPENSATED DENSITY (pu)	-10
6	CALIPER (in)	16	10 (ft3)	0 30	COMPENSATED NEUTRON (pu)	-10
0	MINMK	20	TBHV		-0.25 CORRECTION (g/cc)	0.25
			0 (ft3)	10		

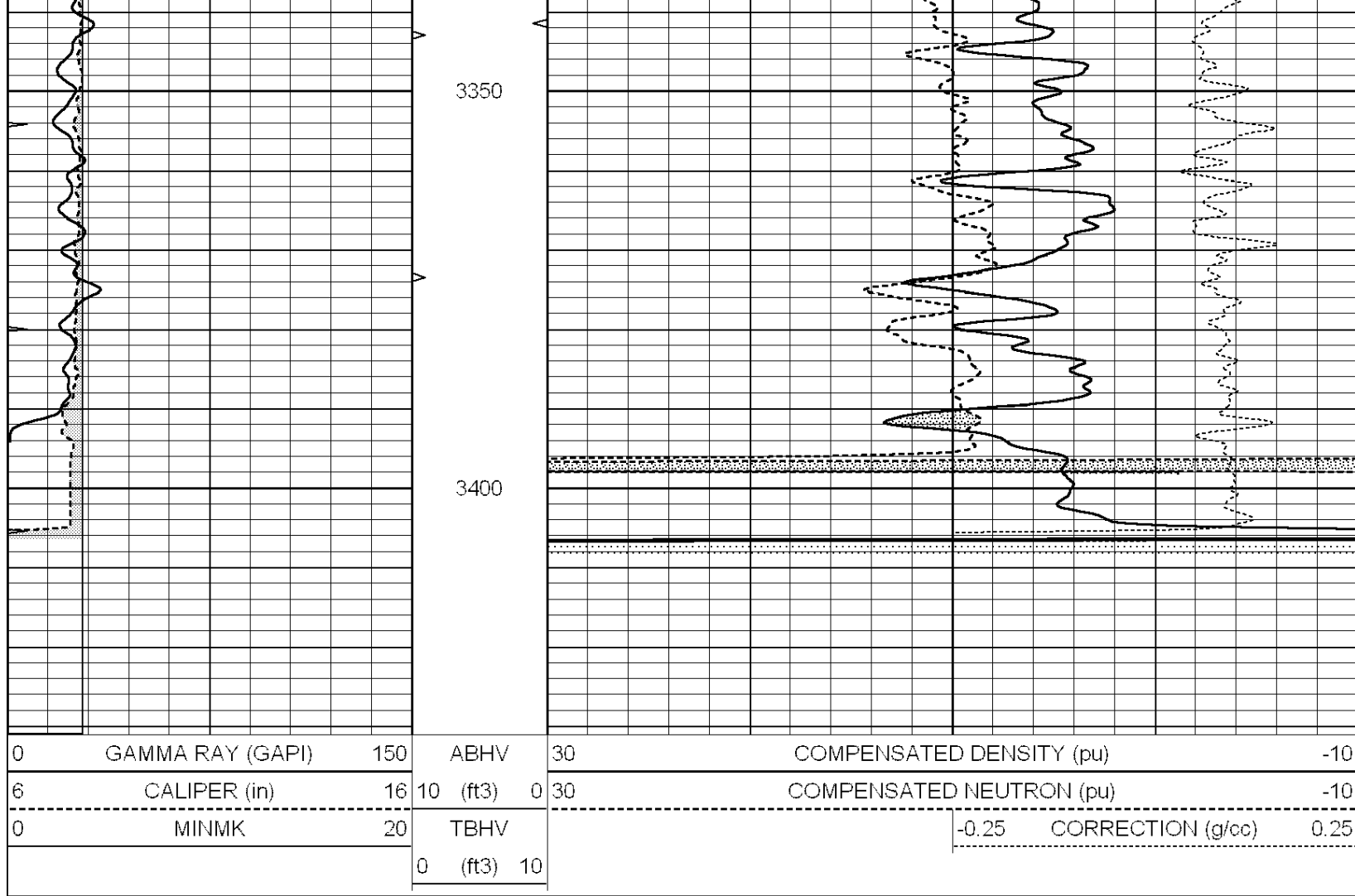


DOLOMITE MATRIX 2.81

Database File: 010181ddn.db
 Dataset Pathname: pass2.5.D
 Presentation Format: _den_neu
 Dataset Creation: Sat May 25 23:50:27 2013
 Charted by: Depth in Feet scaled 1:240

0	GAMMA RAY (GAPI)	150	ABHV	30	COMPENSATED DENSITY (pu)	-10
6	CALIPER (in)	16	10 (ft3)	0 30	COMPENSATED NEUTRON (pu)	-10
0	MINMK	20	TBHV		-0.25 CORRECTION (g/cc)	0.25
			0 (ft3)	10		





Calibration Report

Database File: 010181ddn.db
 Dataset Pathname: pass3.2
 Dataset Creation: Sat May 25 23:40:53 2013 by Calc Open-Cased 090629

Dual Induction Calibration Report

Serial-Model: PROBE7-DILG
 Surface Cal Performed: Sun May 19 13:30:40 2013
 Downhole Cal Performed: Sat Jan 19 19:51:38 2013
 After Survey Verification Performed: Sat Jan 19 19:51:38 2013

Surface Calibration

Loop:	Readings			References			Results	
	Air	Loop		Air	Loop		m	b
Deep	0.793	0.790	V	0.000	400.000	mmho/m	620.000	7.000
Medium	0.992	1.002	V	0.000	464.000	mmho/m	660.000	-38.000
Internal:	Zero	Cal		Zero	Cal		m	b
Deep	0.041	0.642	V	0.000	400.000	mmho/m	664.874	-27.011
Medium	0.035	0.802	V	0.000	464.000	mmho/m	604.936	-21.367

Downhole Calibration

	Readings			References			Results	
	Zero	Cal		Zero	Cal		m'	b'
Deep	135384.000	27094.500	mmho/m	135400.000	27082.400	mmho/m	1.000	-19.259
Medium	-47330.100	-9381.740	mmho/m	-47327.100	-9389.280	mmho/m	1.000	-10.154

LL3	7.322	V	1400.000	mmho/m
	0.038	V	20.000	Ohm-m
	-7.273	V	4000.000	mmho-m

After Survey Verification

	Readings			Targets			Results	
	Zero	Cal		Zero	Cal		m'	b'
Deep	0.000	0.000	mmho/m	135384.000	27094.500	mmho/m	1.000	0.000
Medium	0.000	0.000	mmho/m	-47330.100	-9381.740	mmho/m	1.000	0.000
LL3		0.000	Ohm-m		1400.000	Ohm-m		
		0.000	Ohm-m		20.000	Ohm-m		
		0.000	mmho-m		4000.000	mmho-m		

Compensated Density Calibration Report

Serial-Model: GEAR1-GEARHART
 Source / Verifier: 147 / 147
 Master Calibration Performed: Mon May 13 17:25:39 2013

Master Calibration

	Density		Far Detector	Near Detector	
Magnesium	1.710	g/cc	1205.77	610.74	cps
Aluminum	2.600	g/cc	271.21	419.72	cps
Spine Angle = 75.89			Density/Spine Ratio = 0.579		
	Size		Reading		
Small Ring	7.70	in	4.69	V	
Large Ring	14.00	in	6.52	V	

Compensated Neutron Calibration Report

Serial Number: NEU_4I
 Tool Model: G

CALIBRATION

Detector	Readings	Target	Normalization
Short Space	1.00 cps	1.00 cps	1.0000
Long Space	1.00 cps	1.00 cps	1.0000

Gamma Ray Calibration Report

Serial Number: GR1
 Tool Model: OPEN
 Performed: Mon May 20 17:04:25 2013

Calibrator Value: 1.0 GAPI

Background Reading: 0.0 cps
 Calibrator Reading: 1.0 cps

Sensitivity: 0.9000 GAPI/cps