



**COMPLETION
& PRODUCTION
SERVICES CO.**

**SONIC
LOG**

Company SHELBY RESOURCES, LLC.
Well SCHLESSIGER CATTLE #1-2
Field BOYD
County BARTON State KANSAS

Company SHELBY RESOURCES, LLC.
Well SCHLESSIGER CATTLE #1-2
Field BOYD
County BARTON
State KANSAS

Location: API #: 15-009-25833-00-00
SEC 2 TWP 18S RGE 14W
2138' FNL & 330' FEL
N/2 - SE - SE - NE
Permanent Datum GROUND LEVEL Elevation 1833
Log Measured From KELLY BUSHING 9' A.G.L.
Drilling Measured From KELLY BUSHING
Other Services
CDL/CNL
DIL/MEL
Elevation
K.B. 1842
D.F. 1840
G.L. 1833

Date	5/25/13		
Run Number	TWMO		
Depth Driller	3420		
Depth Logger	3419		
Bottom Logged Interval	3409		
Top Log Interval	0		
Casing Driller	804		
Casing Logger	804		
Bit Size	7.875		
Type Fluid in Hole	CHEMICAL MUD	CHLORIDES 6.400	
Density / Viscosity	9.1 / 71		
pH / Fluid Loss	9.5 / 8.8		
Source of Sample	FLOWLINE		
Rim @ Meas. Temp	0.65 @ 80F		
Rmf @ Meas. Temp	0.49 @ 80F		
Rmc @ Meas. Temp	0.78 @ 80F		
Source of Rmf / Rmc	MEASURED		
Rim @ BHT	0.4 @ 111F		
Time Circulation Stopped	2 HOURS		
Time Logger on Bottom			
Maximum Recorded Temperature	111F		
Equipment Number	860		
Location	HAYS, KS.		
Recorded By	JEFF GRONEWEG		
Witnessed By	JEREMY SCHWARTZ		

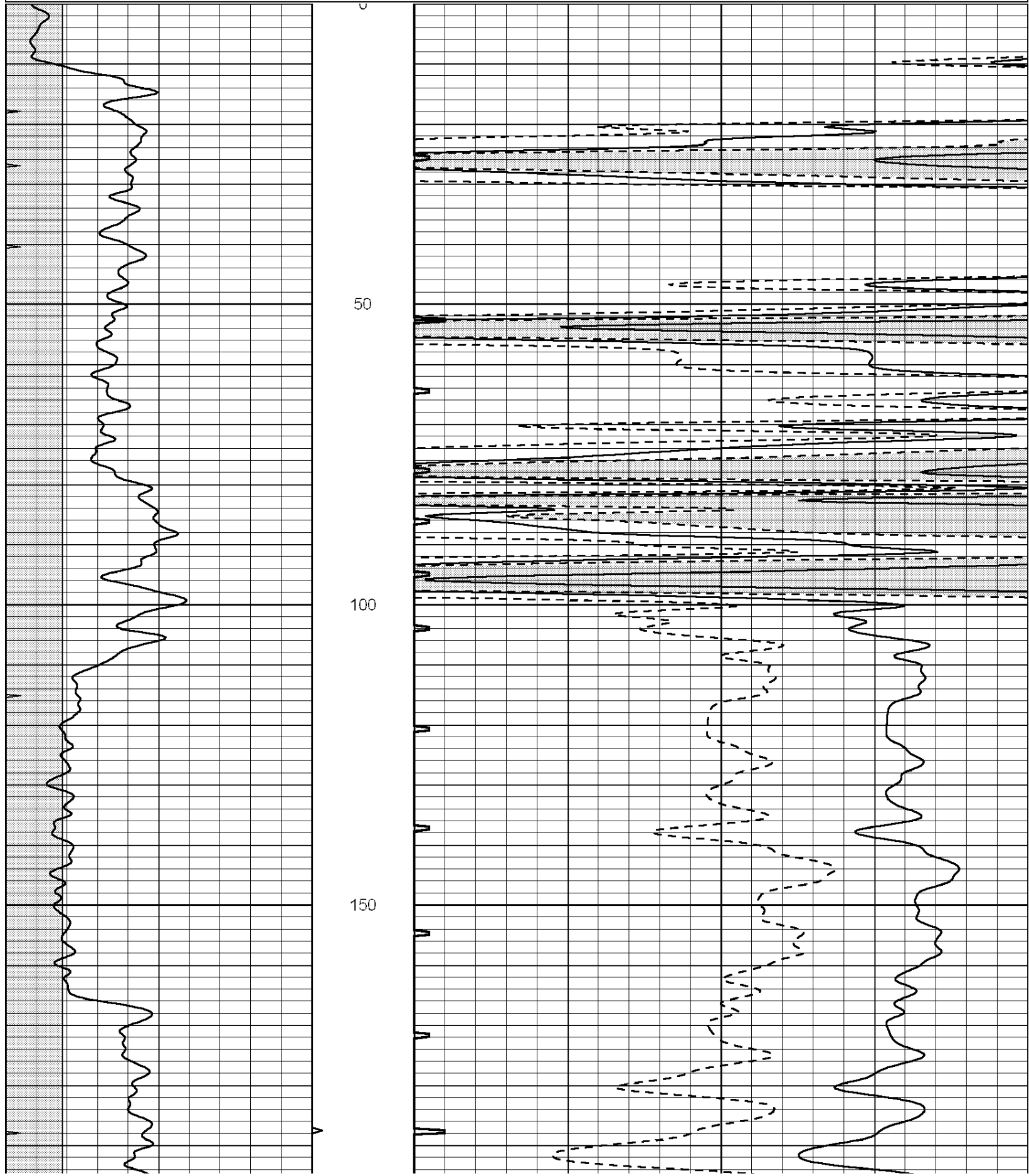
<<< Fold Here >>>

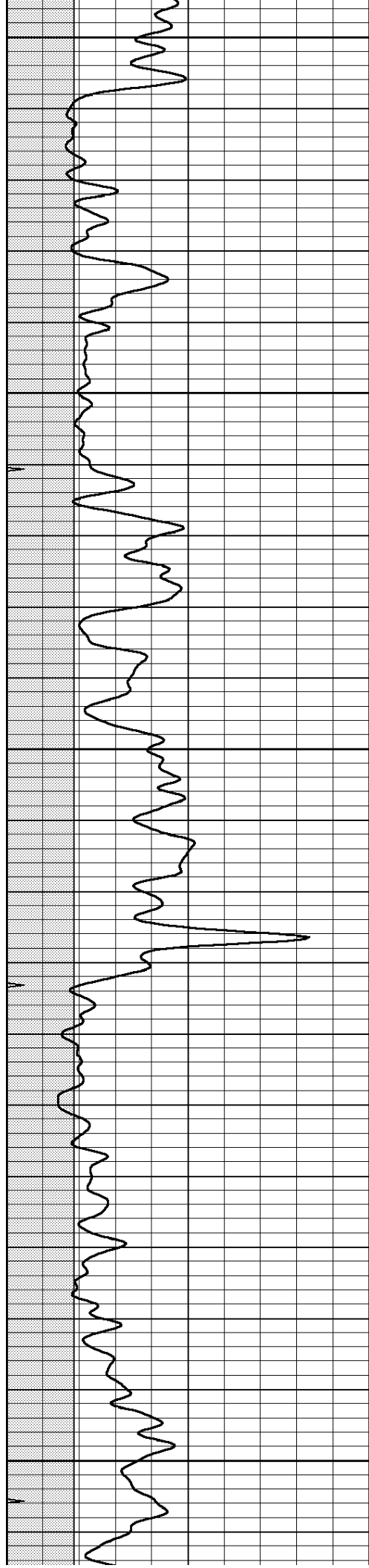
All interpretations are opinions based on inferences from electrical or other measurements and we cannot and do not guarantee the accuracy or correctness of any interpretation, and we shall not, except in the case of gross or willful negligence on our part, be liable or responsible for any loss, costs, damages, or expenses incurred or sustained by anyone resulting from any interpretation made by any of our officers, agents or employees. These interpretations are also subject to our general terms and conditions set out in our current Price Schedule.

Comments

NABORS COMPLETION & PRODUCTION SERVICES
785-628-6395
THANK YOU FOR YOUR BUSINESS
DIRECTIONS: RUSSELL, KS - SOUTH TO INTERSECTION OF HWYS 4 & 281
2 MILES SOUTH TO RD 100 - 1 MILE EAST TO RD 30 - 1/2 MILE NORTH - WEST INTO

0	GAMMA RAY (GAPI)	150	ABHV	140	DELTA TIME (usec/ft)	40
6	MELCAL (in)	16	10 (ft3) 0	30	SONIC POROSITY (pu)	-10
0	MINMK	20	TBHV	0	ITT (msec)	20
			0 (ft3) 10			





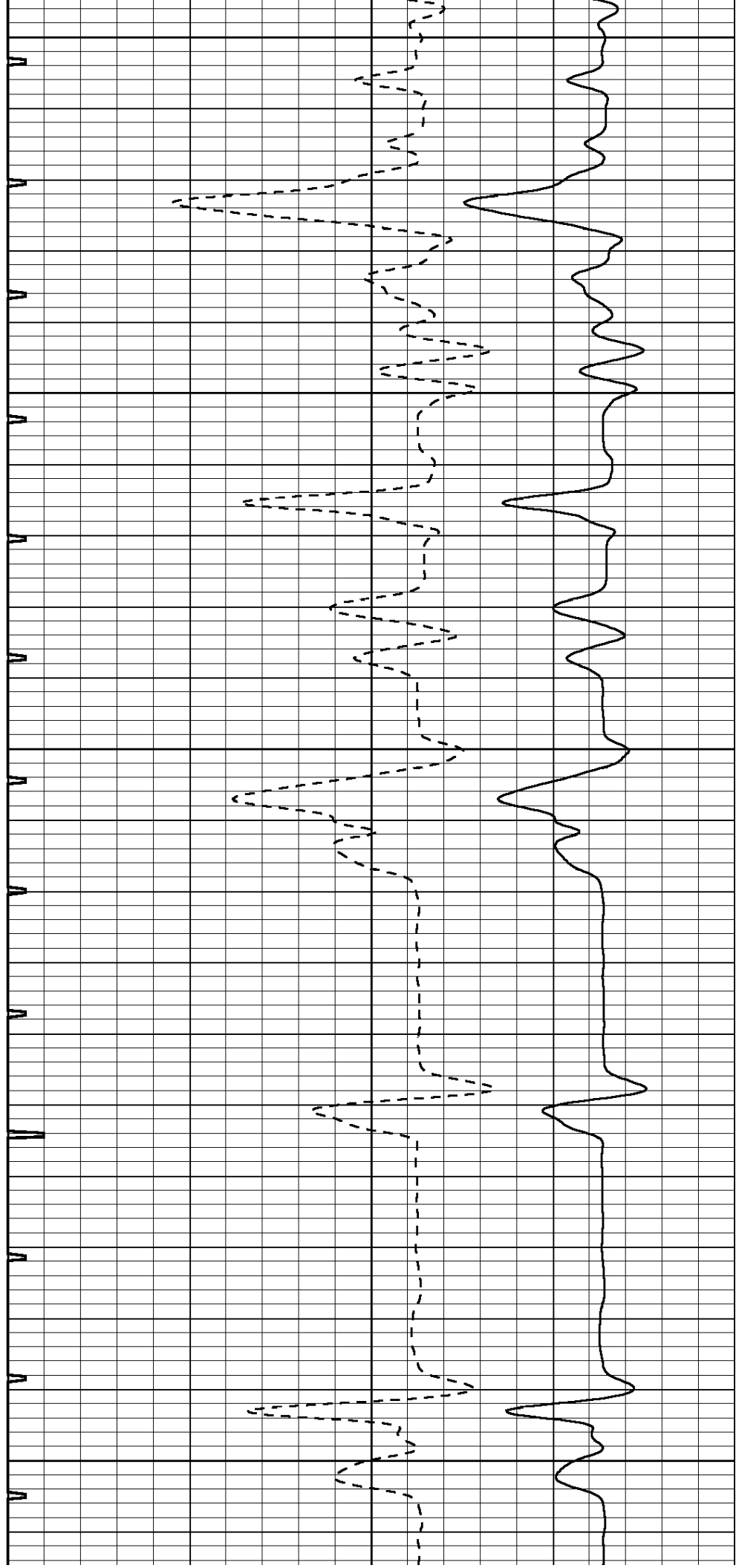
200

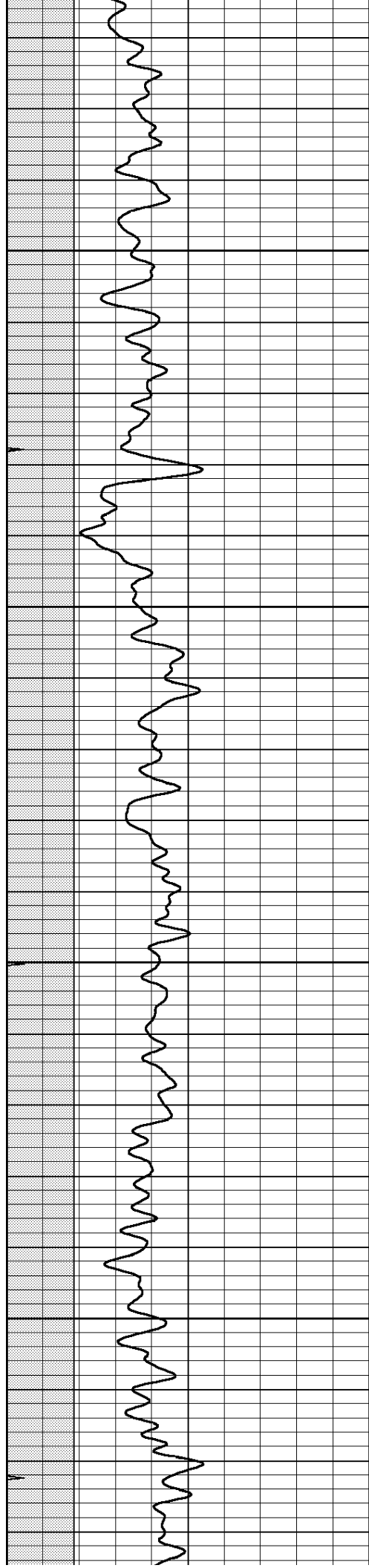
250

300

350

400



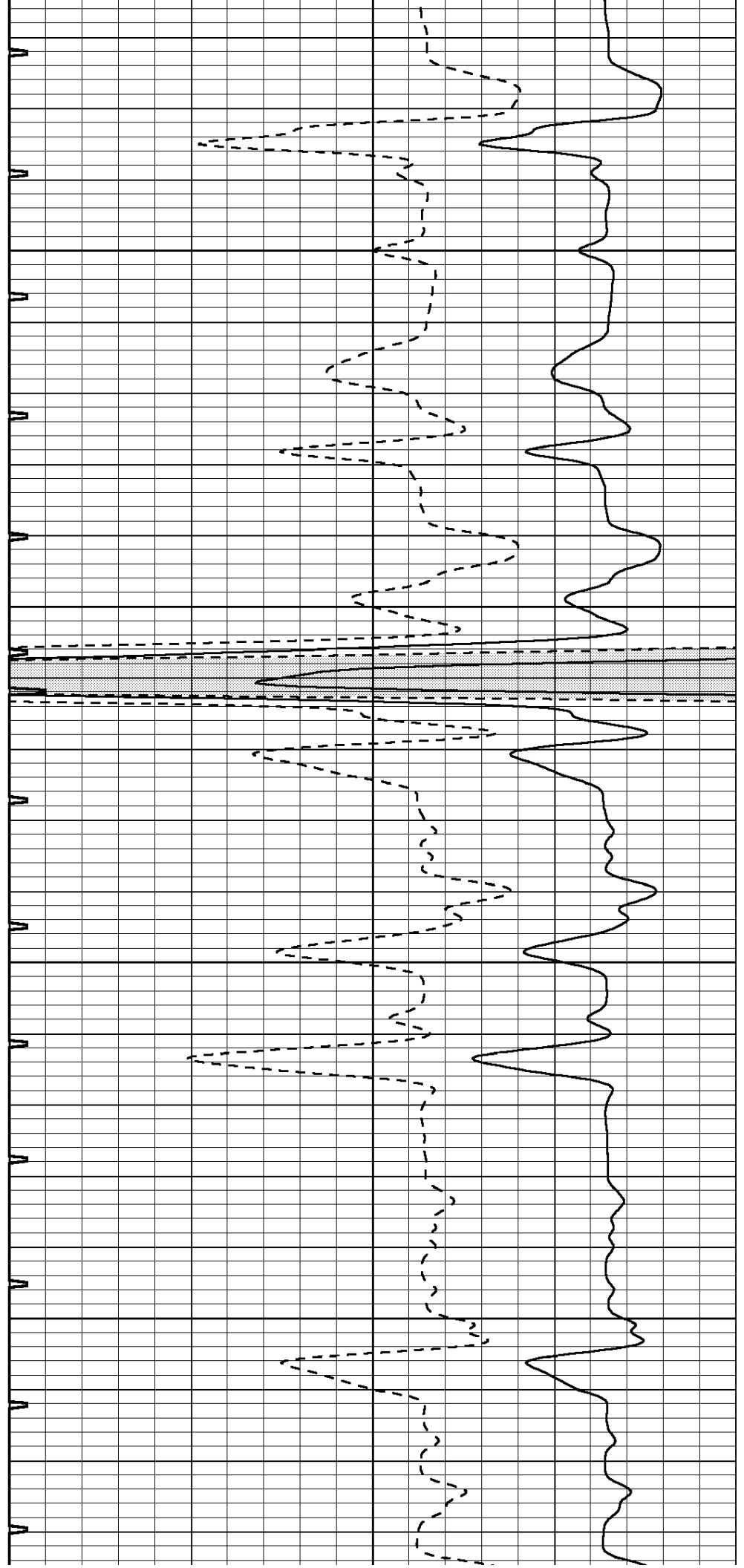


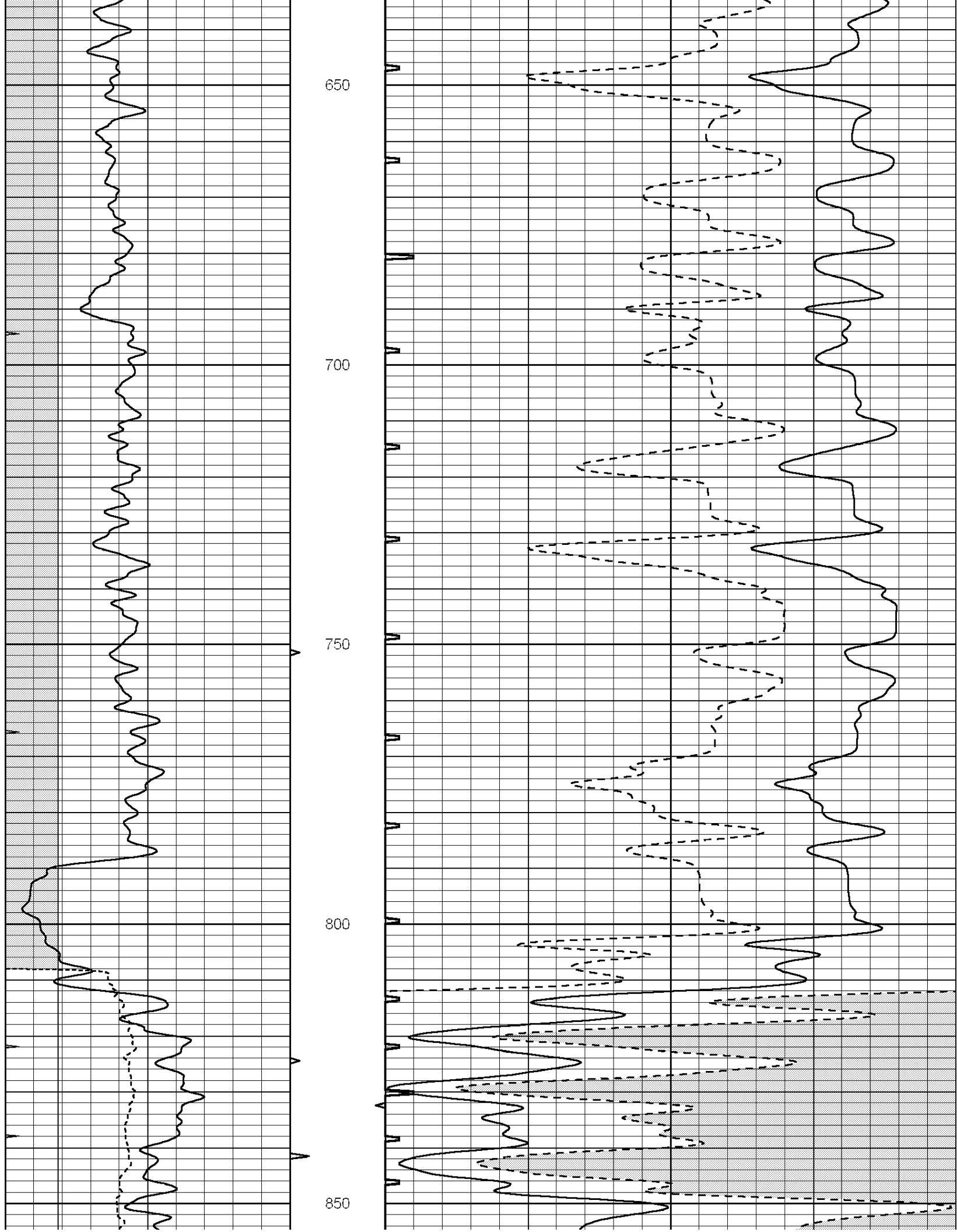
450

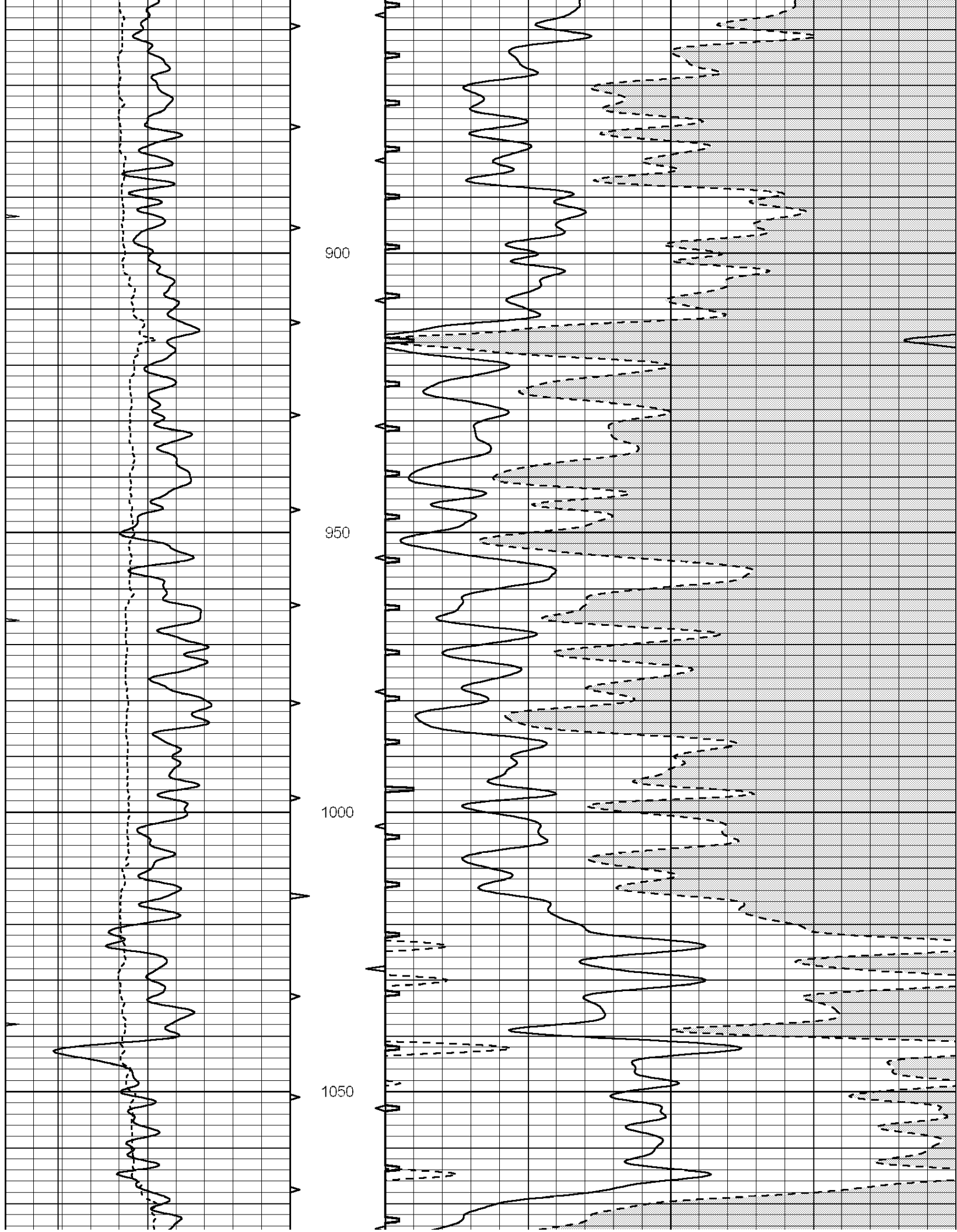
500

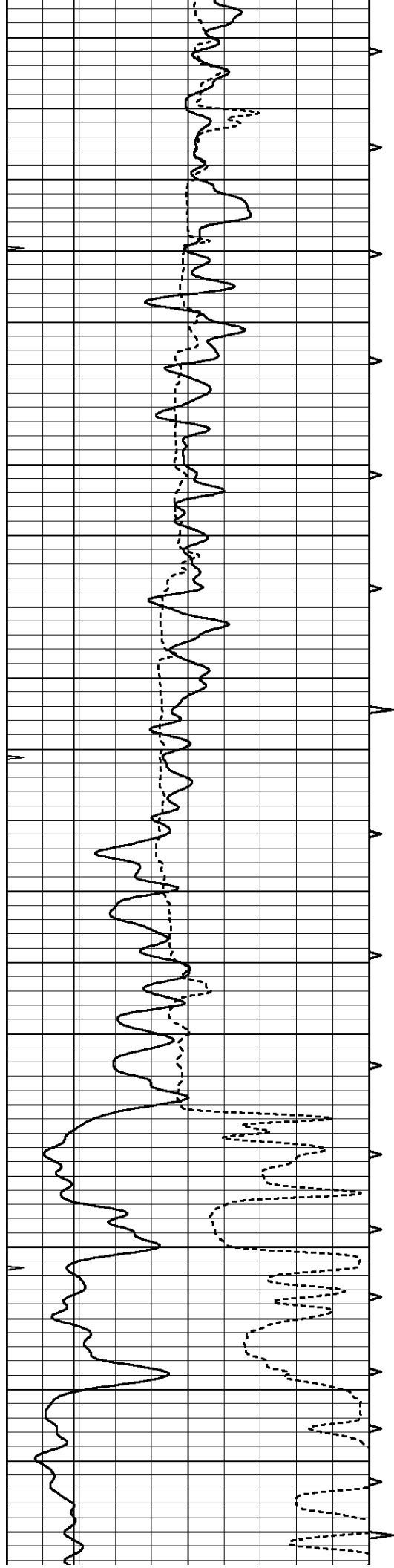
550

600







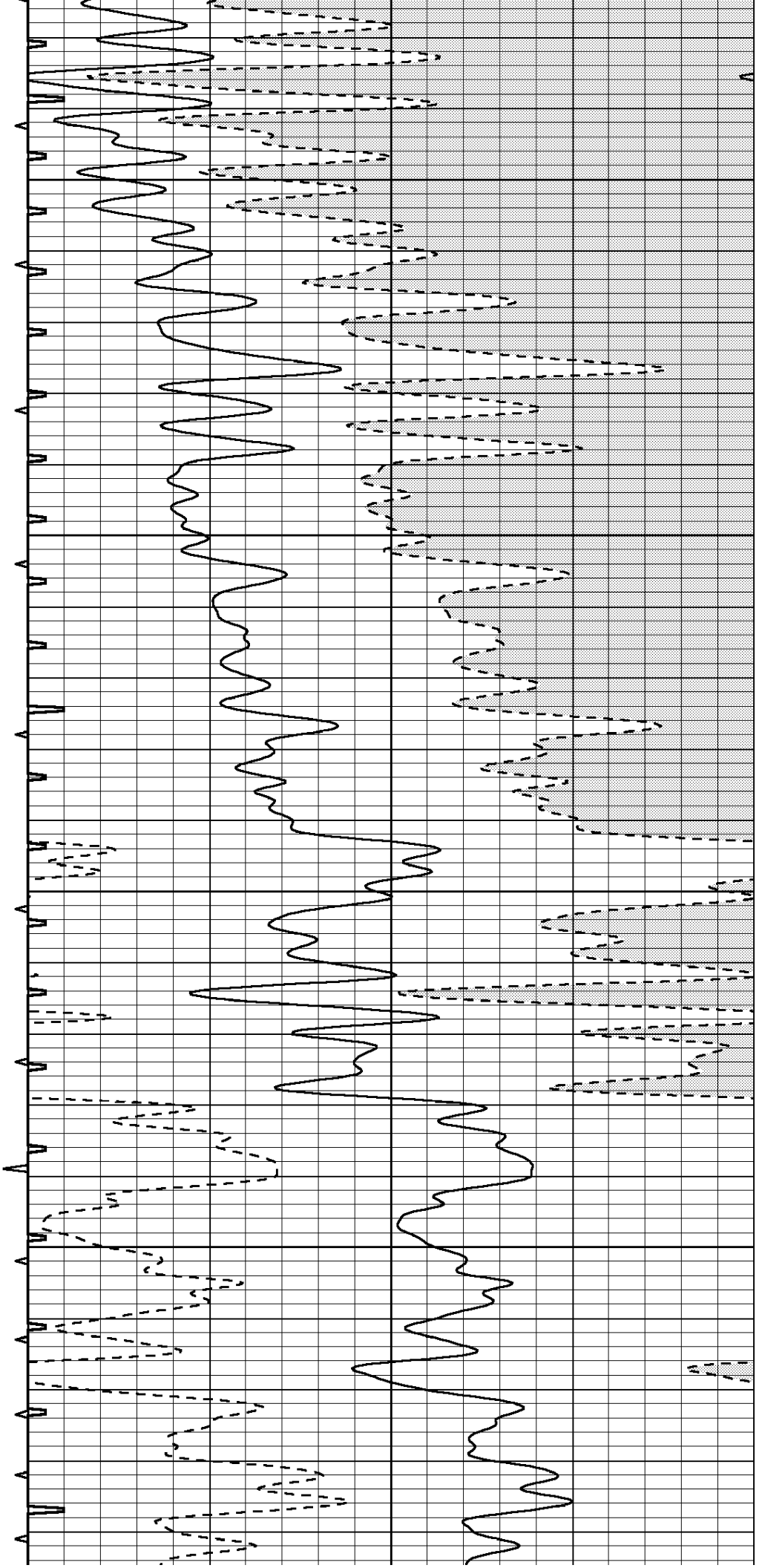


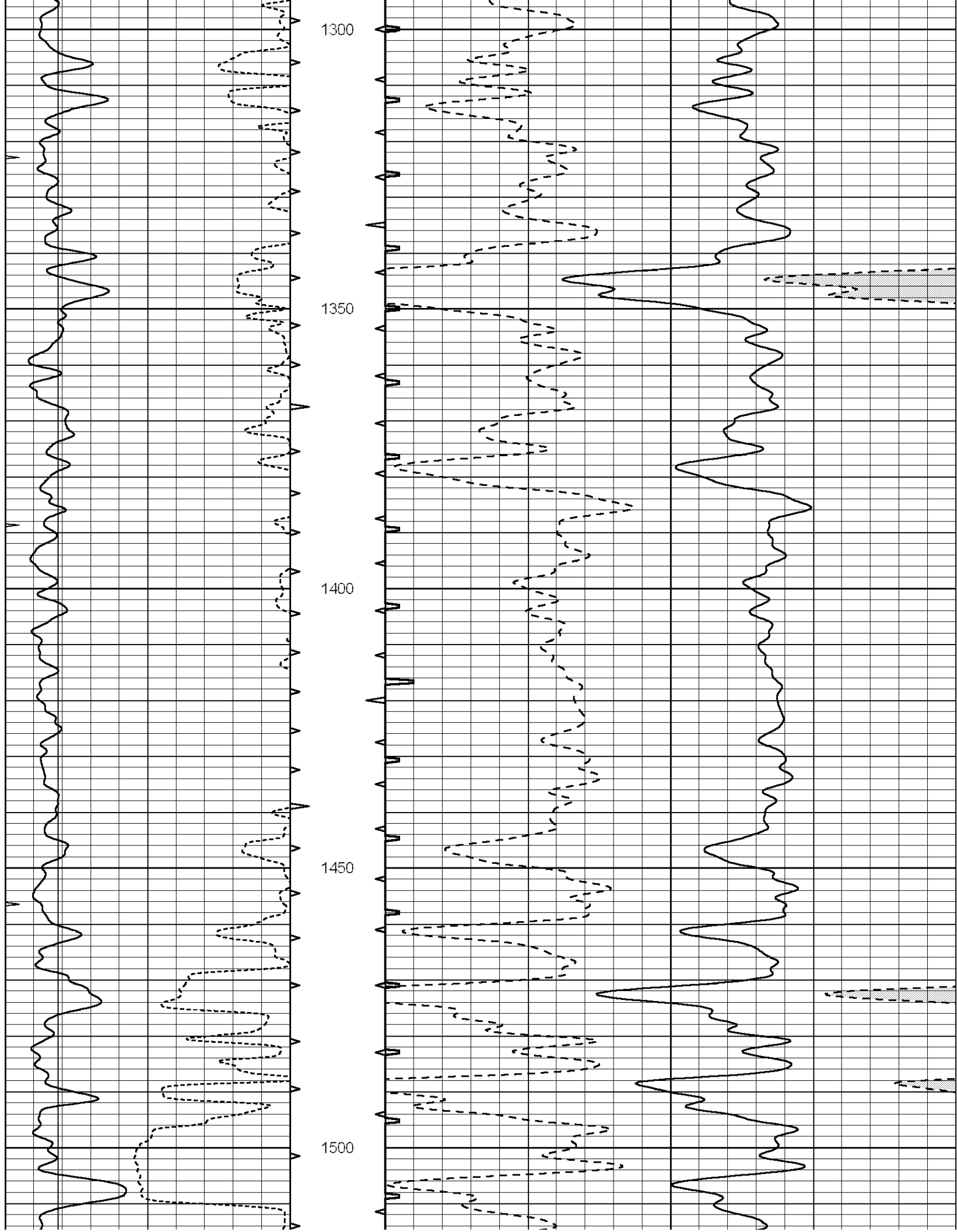
1100

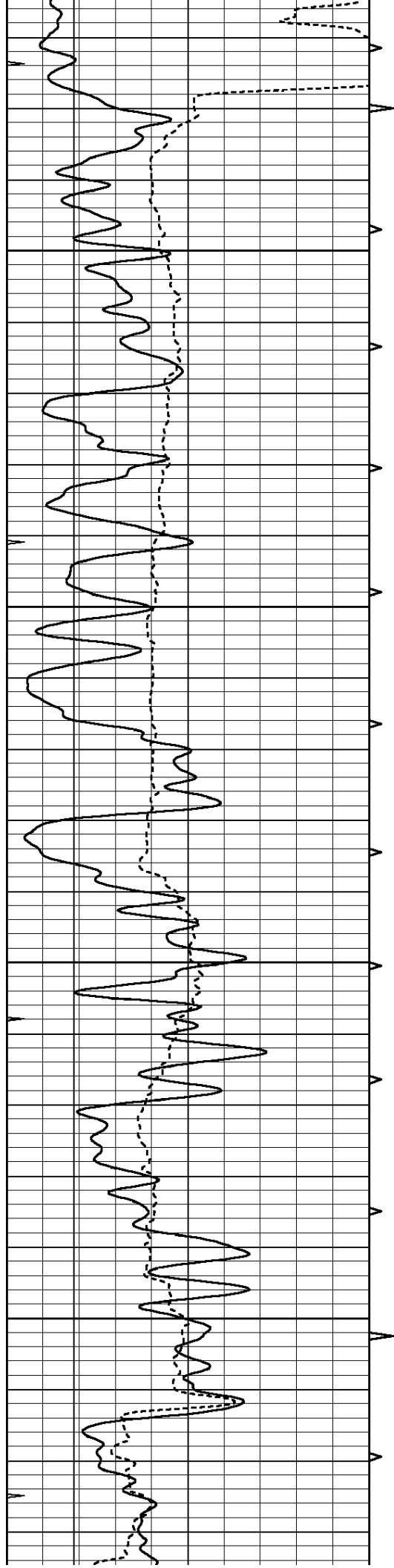
1150

1200

1250





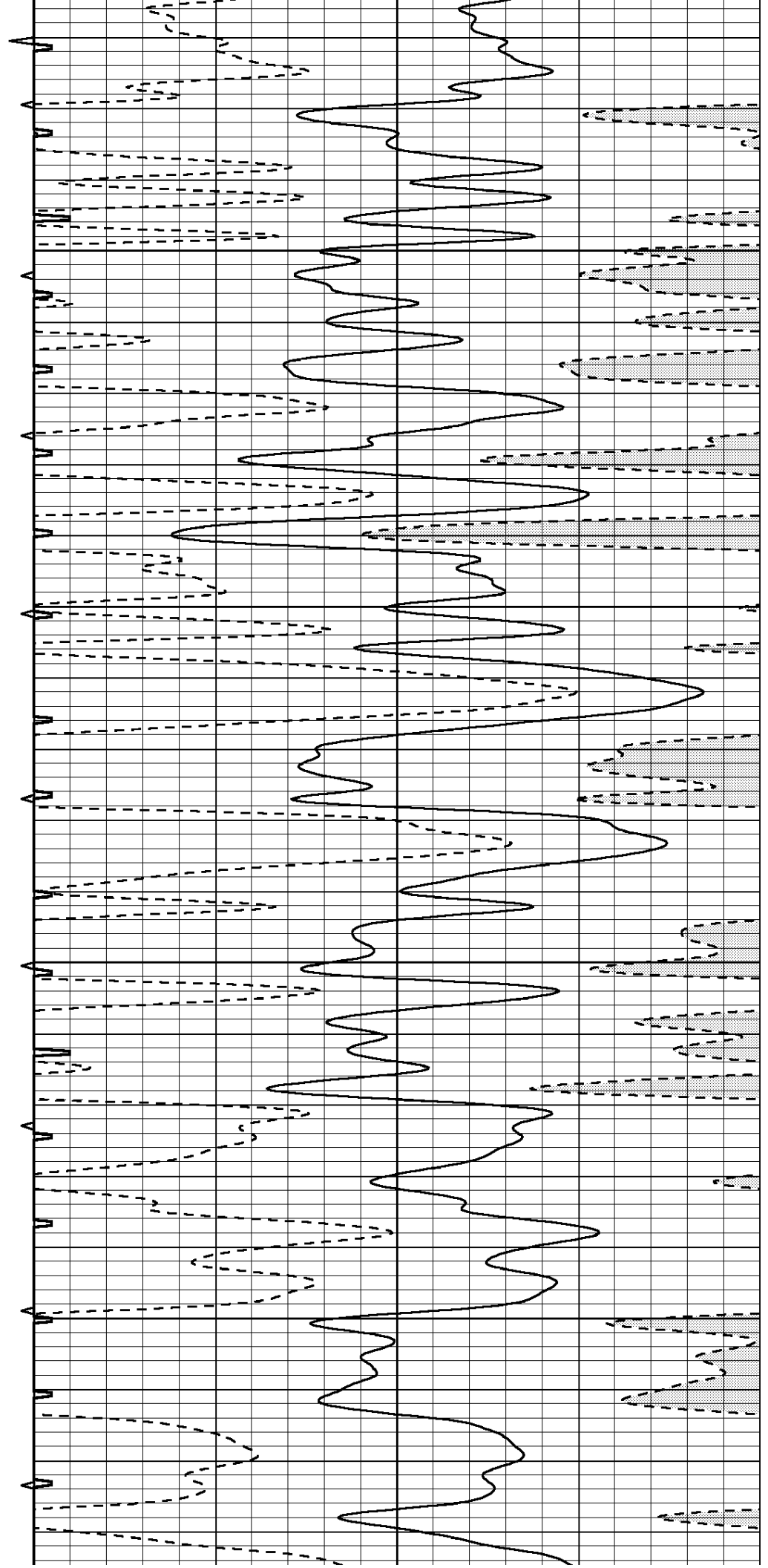


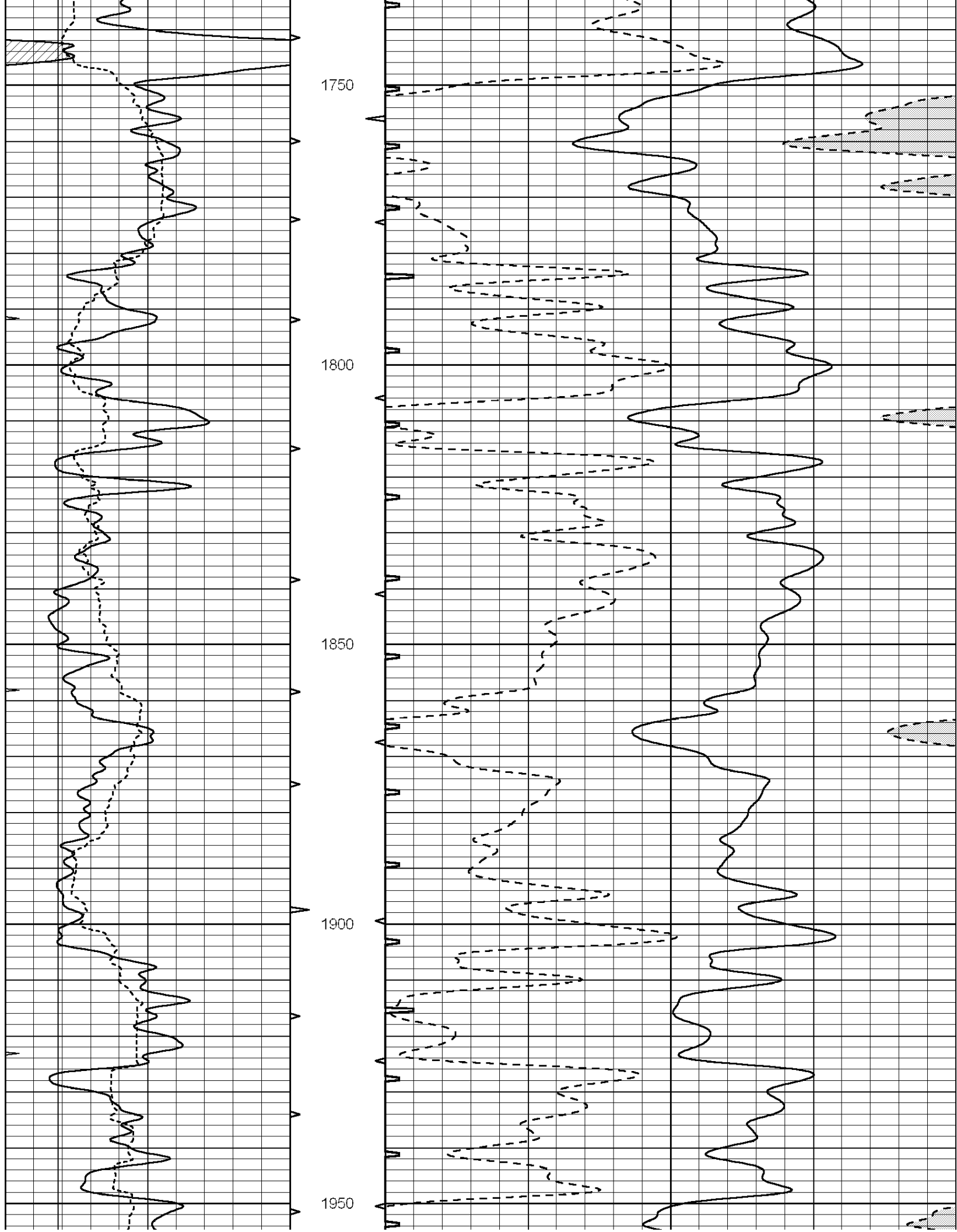
1550

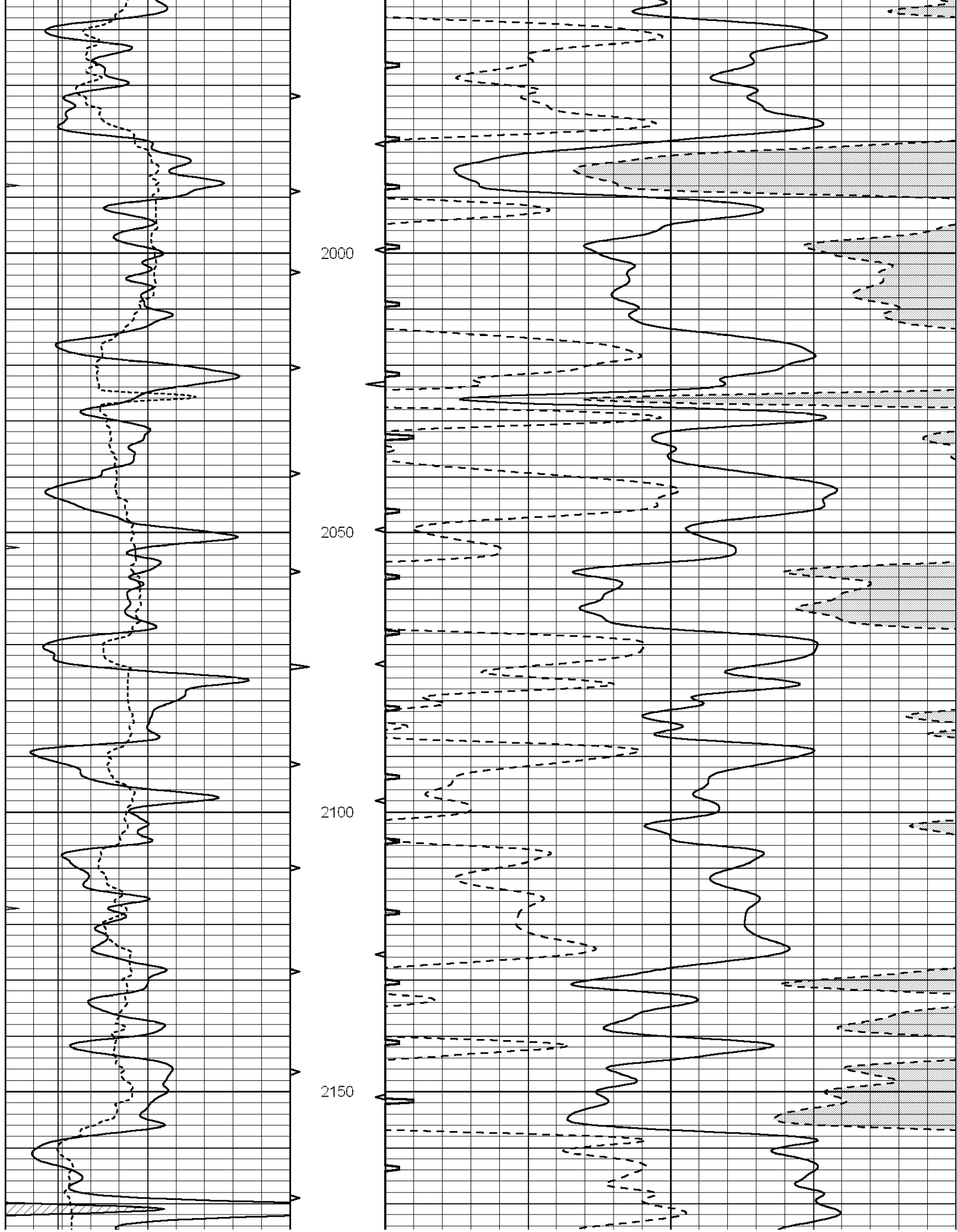
1600

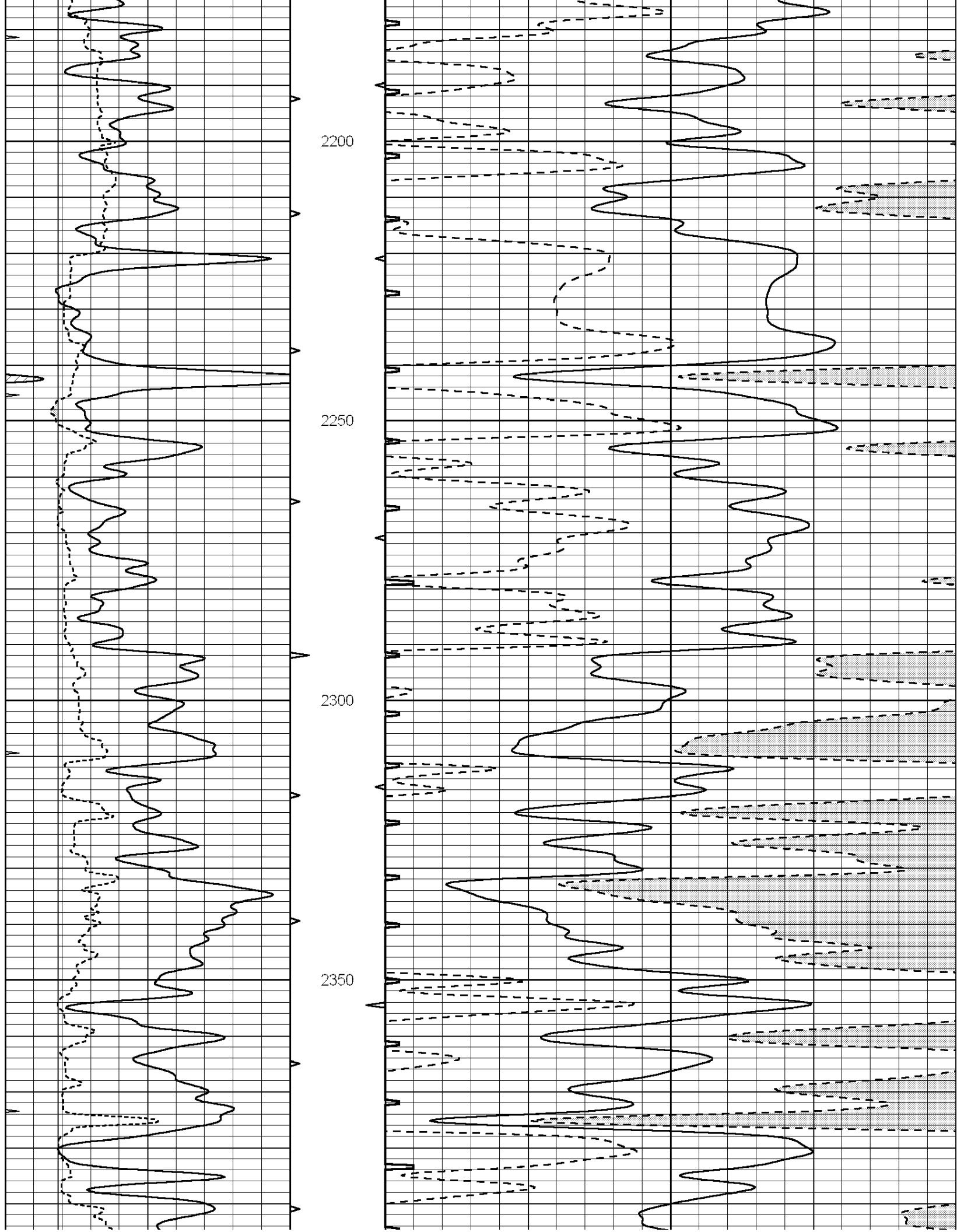
1650

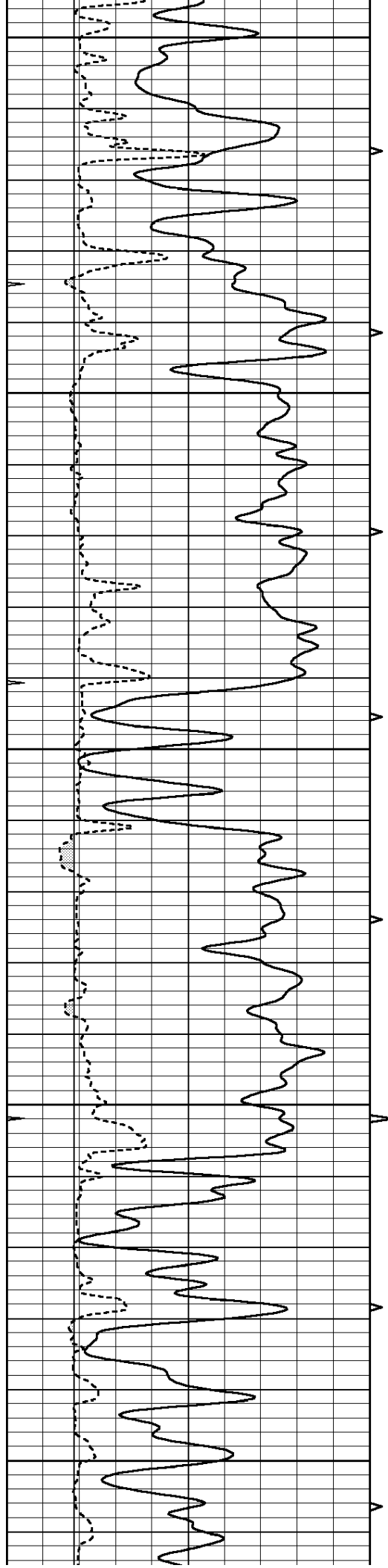
1700











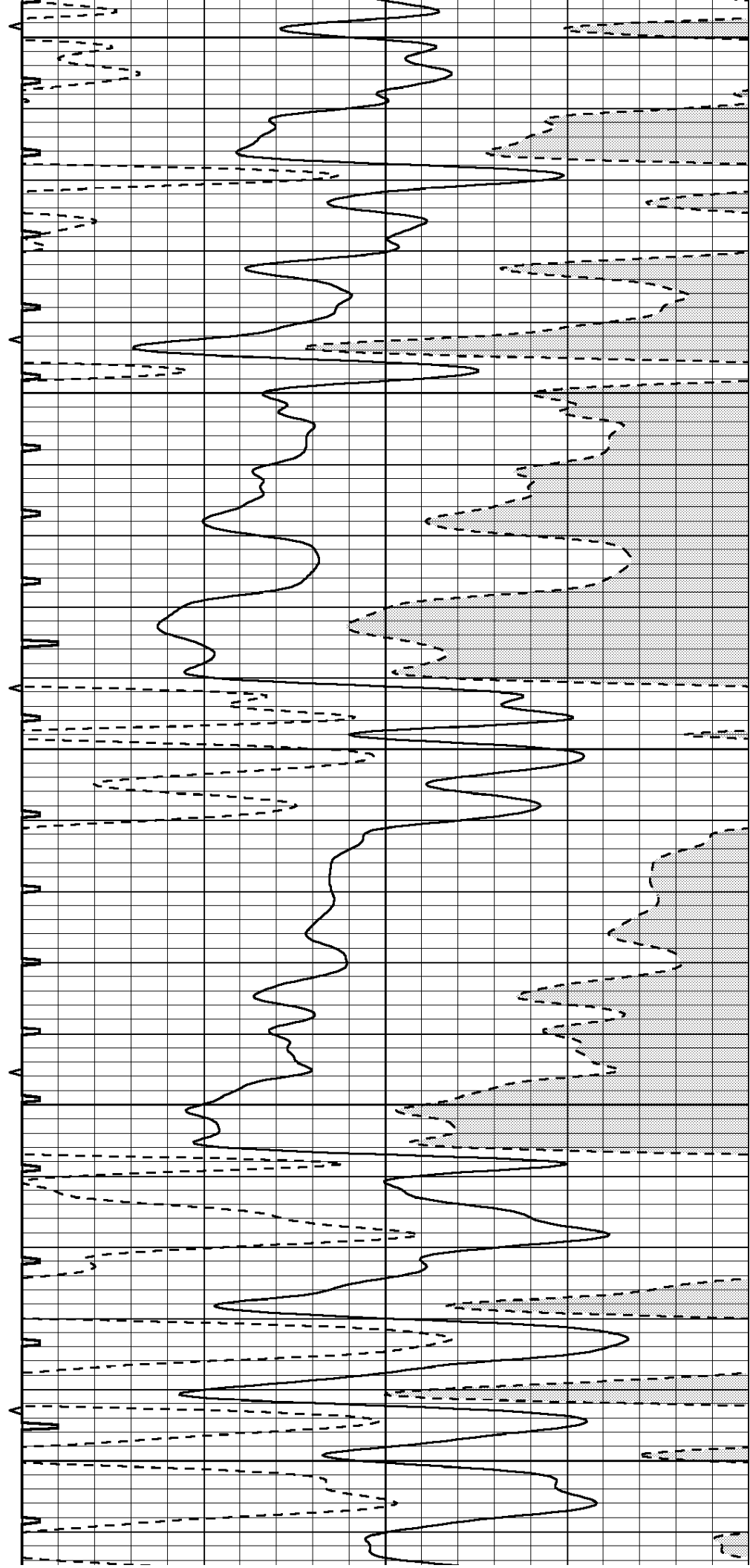
2400

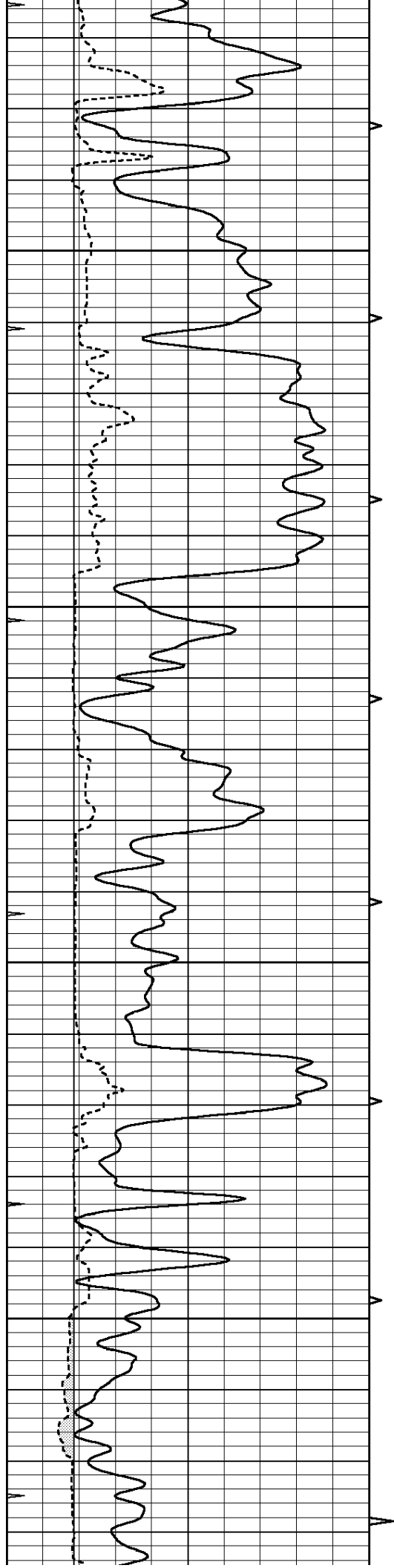
2450

2500

2550

2600



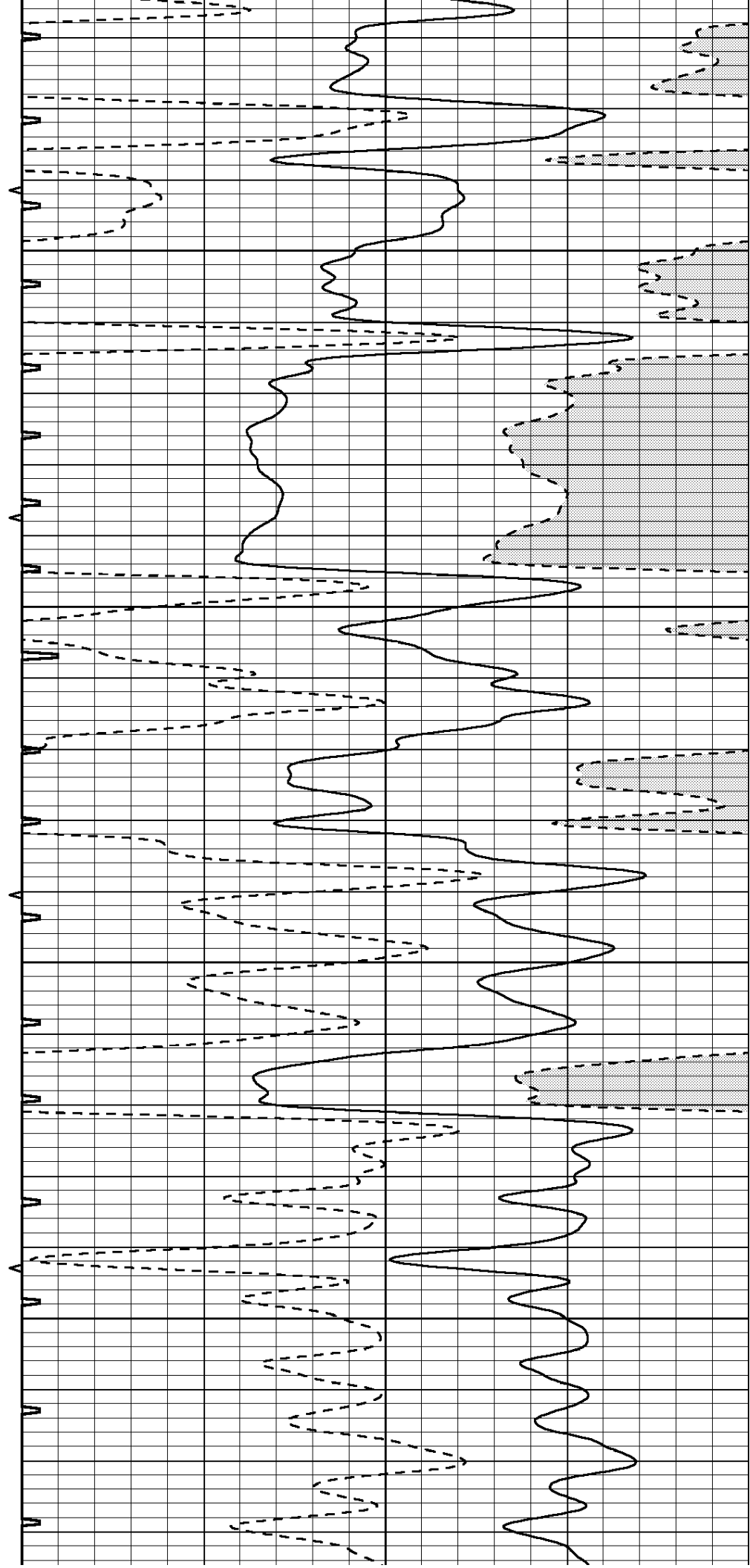


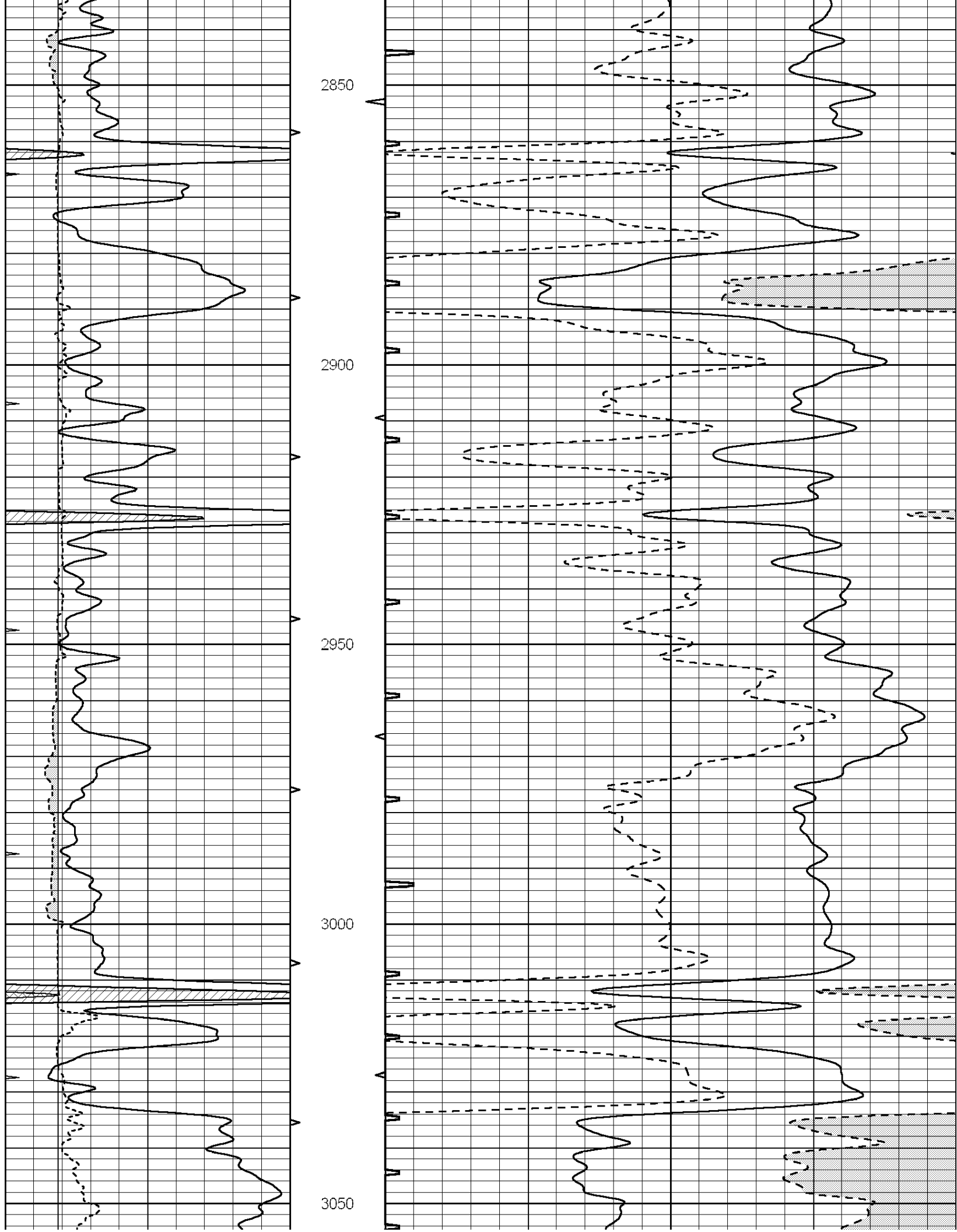
2650

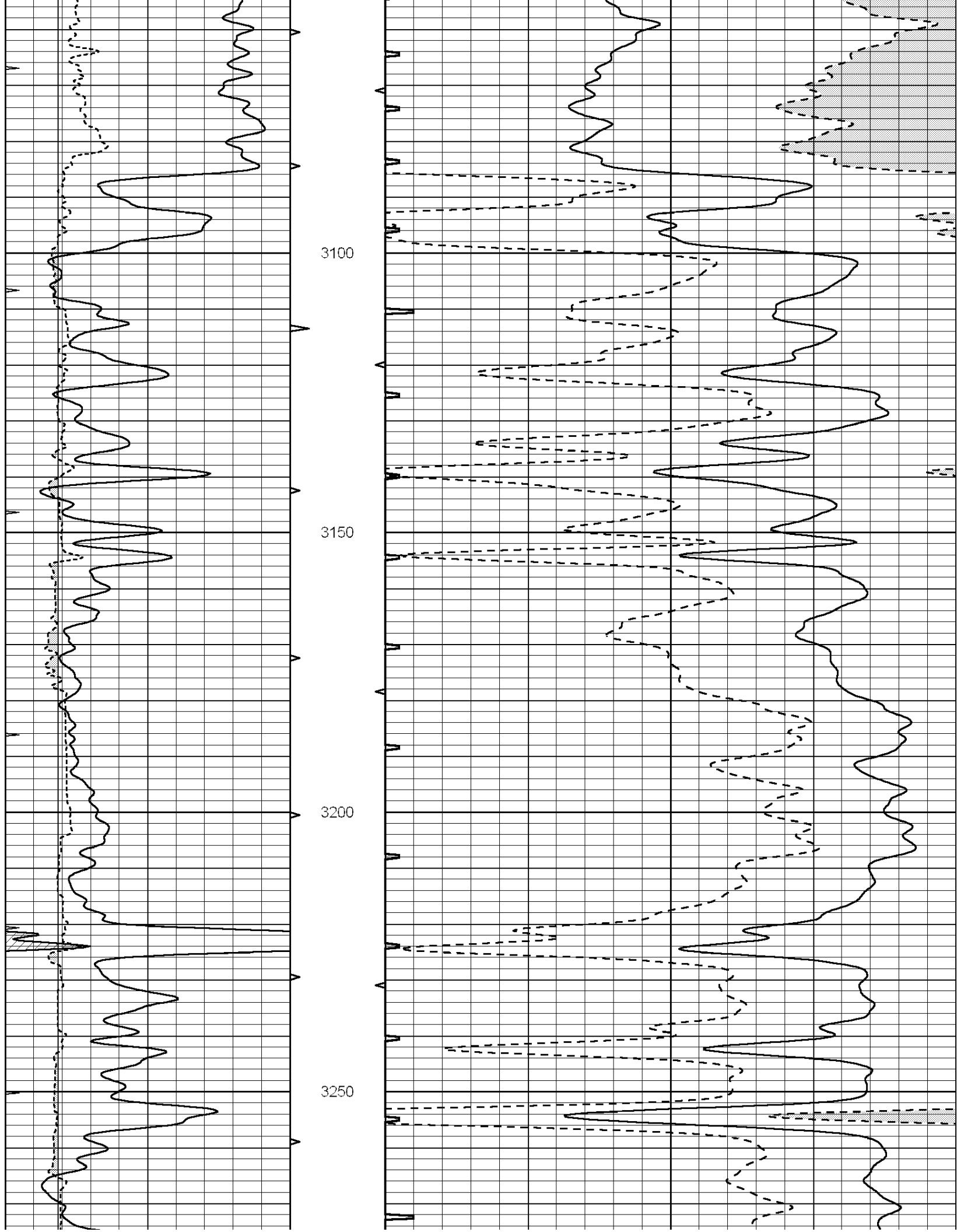
2700

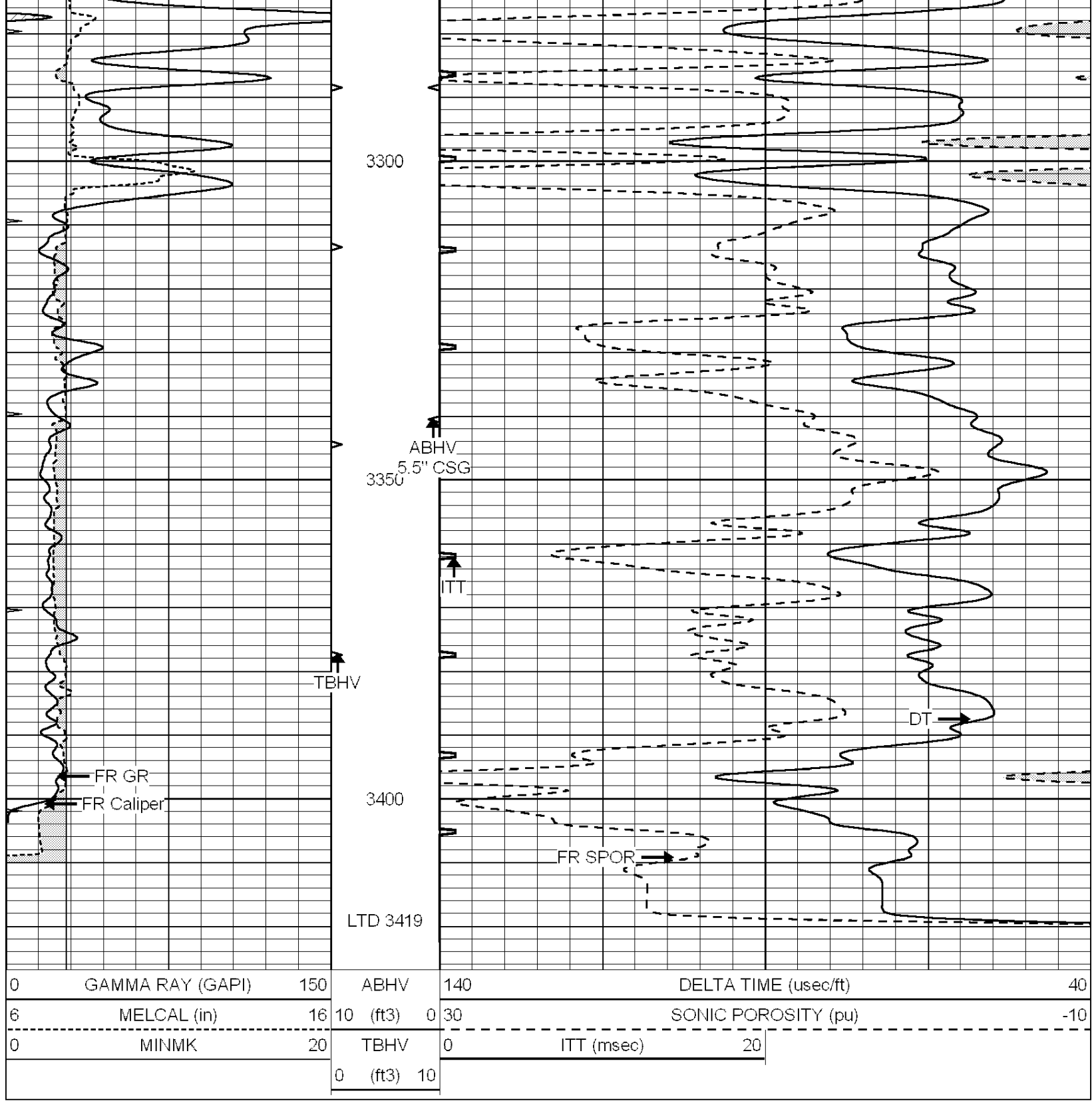
2750

2800





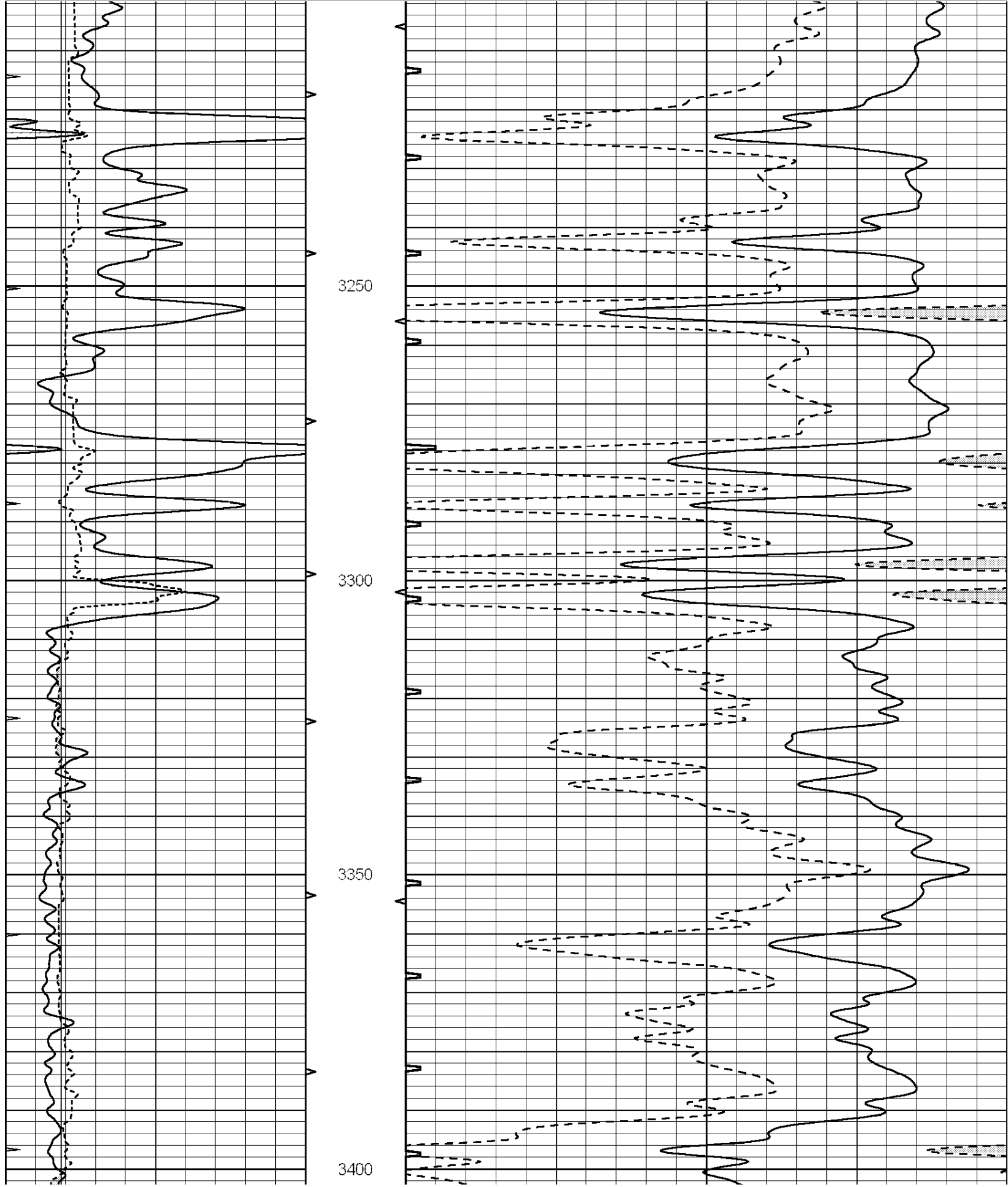


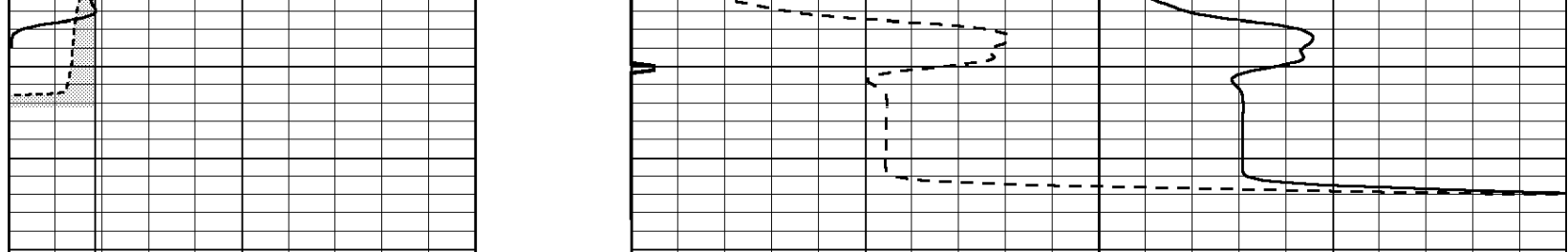


REPEAT SECTION

Database File: 010181ddn.db
 Dataset Pathname: pass5.3
 Presentation Format: _slt
 Dataset Creation: Sun May 26 01:17:25 2013 by Calc Open-Cased 090629
 Charted by: Depth in Feet scaled 1:240

0	GAMMA RAY (GAPI)	150	ABHV	140	DELTA TIME (usec/ft)	40
6	MELCAL (in)	16	10 (ft3)	0 30	SONIC POROSITY (pu)	-10
0	MINMK	20	TBHV	0	ITT (msec)	20
			0 (ft3)	10		





0	GAMMA RAY (GAPI)	150	ABHV	140	DELTA TIME (usec/ft)	40
6	MELCAL (in)	16	10 (ft3) 0	30	SONIC POROSITY (pu)	-10
0	MINMK	20	TBHV	0	ITT (msec)	20
			0 (ft3) 10			