



**MIDWEST SURVEYS**  
 LOGGING - PERFORATING - CONSULTING SERVICES  
 P.O. Box 68, Osawatomie, KS 66064  
 913 / 755 - 2128

**GAMMA RAY / NEUTRON / CCL**

File No.

Company **ST Petroleum, Inc.**

Well **Thomas "A" No. - 9**

Field **Gardner South**

County **Johnson**

State **Kansas**

Location **30801 FSL & 4501 FEL**

Perforate **NM-SE-SE-NE**

Other Services

Sec. 29

Permament Datum

Log Measured From

Drilling Measured From

Date

Run Number

Depth Logger

Bottom Logged Interval

Top Log Interval

Fluid Level

Type Fluid

Density / Viscosity

Salinity - PPM Cl

Max Recorded Temp

Estimated Cement Top

Equipment No.

Recorded By

Missused By

BORE-HOLE RECORD

NO. BIT

One 9.875"

Two 5.625"

SIZE

7.00"

2.875"

WT

0.0

0.0

TO

20.0

958.0

958.0

950.0

919.0

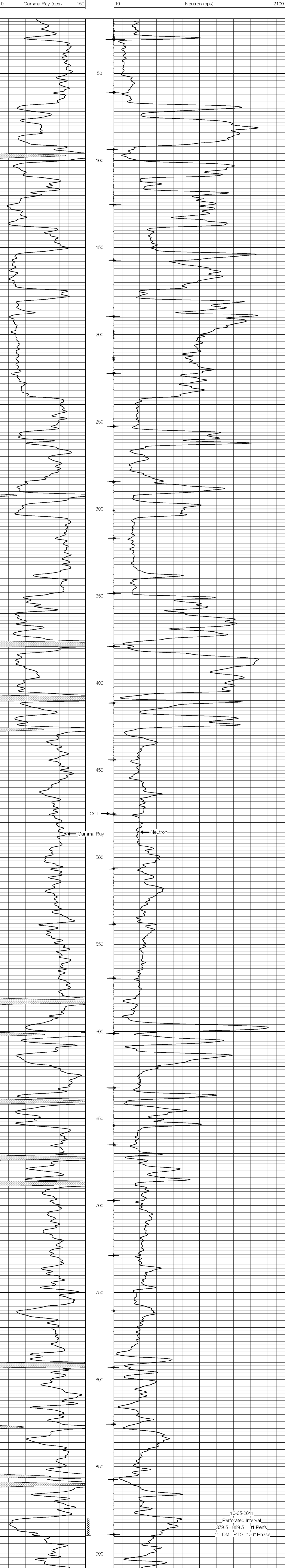
<<< Fold Here >>>

All interpretations are opinions based on inferences from electrical or other measurements and we cannot and do not guarantee the accuracy or correctness of any interpretation, and we shall not, except in the case of gross or willful negligence on our part, be liable or responsible for any loss, costs, damages, or expenses incurred or sustained by anyone resulting from any interpretation made by any of our officers, agents or employees. These interpretations are also subject to our general terms and conditions set out in our current Price Schedule.

Comments

Drilling Contractor :  
 Town Oilfield Services

Database File: thoms9a.db  
 Dataset Pathname: pass1  
 Presentation Format: gr-n-ccl  
 Dataset Creation: Thu Sep 15 12:10:41 2011 by Log Std Casedhole 07122  
 Charted by: Depth in Feet scaled 1:240



10-05-2011  
 Perforated Interval  
 879.5 - 889.5 31 Perfs  
 2" DML RTG 120° Phase