



MIDWEST SURVEYS
 LOGGING - PERFORATING - CONSULTING SERVICES
 P.O. Box 68, Osawatomie, KS 66064
 913 / 755 - 2128

GAMMA RAY / NEUTRON / CCL

File No.

Company ST Petroleum, Inc.
 Well Thomas "A" No. - 4

Field Gardner South

County Johnson State Kansas

Location 2805' FSL & 725' FEL
 SE-SW-SENE

Other Services Perforate

Sec. 29 Twp. 14S Rge. 22E
 Permanent Datum GL Elevation NA
 Log Measured From GL
 Drilling Measured From GL

Date

09-30-2011

Run Number

One

Depth Drifter

958.0

Depth Logger

903.0

Bottom Logged Interval

902.0

Top Log Interval

200.0

Fluid Level

Full

Type Fluid

Water

Density / viscosity

NA

Salinity - PPM Cl

NA

Max Recorded Temp

NA

Estimated Cement Top

0.0

Equipment No

107

Recorded By

Steve Mandisch

Witnessed By

Rick Singleton

RUN

BORE-HOLE RECORD		CASING RECORD			
NO.	DEPTH	SIZE	WT.	FROM	TO
One	9.875"	7.00"	0.0	0.0	20.65
Two	5.625"	2.875"	0.0	0.0	937.0
		20.65	Set	At	926.0

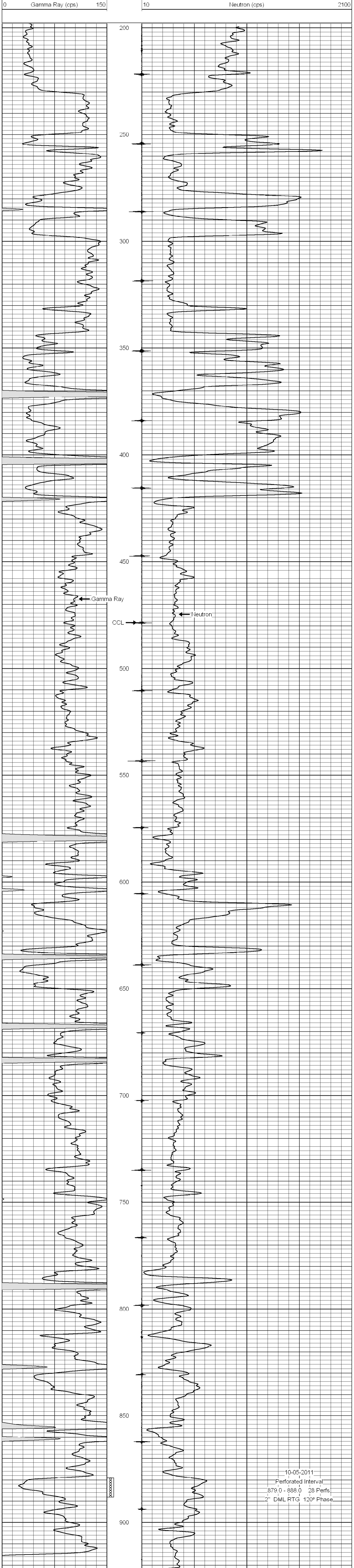
<<< Fold Here >>>

All interpretations are opinions based on inferences from electrical or other measurements and we cannot and do not guarantee the accuracy or correctness of any interpretation, and we shall not, except in the case of gross or willful negligence on our part, be liable or responsible for any loss, costs, damages, or expenses incurred or sustained by anyone resulting from any interpretation made by any of our officers, agents or employees. These interpretations are also subject to our general terms and conditions set out in our current Price Schedule.

Comments

Drilling Contractor :
 Town Oilfield Services

Database File: thoms4a.db
 Dataset Pathname: pass1
 Presentation Format: gr-n-ccl
 Dataset Creation: Fri Sep 30 09:43:38 2011 by Log Std Casedhole 07122
 Charted by: Depth in Feet scaled 1:240



10-05-2011
 Perforated Interval
 879.0 - 888.0 28 Perfs.
 2" DML RTG 120° Phase