



SUPERIOR
Hays,
Kansas

**MICRO
LOG**

Company MAI OIL OPERATIONS INC.
Well LICHTER-LINDSEY UNIT #1
Field REIMER
County BARTON
State KANSAS

Company MAI OIL OPERATIONS, INC.
Well LICHTER-LINDSEY UNIT #1
Field REIMER
County BARTON State KANSAS

Location: API #: 15-009-25592-0000
2500' FSL & 2100' FWL
NW - NE - NE - SW
SEC 25 TWP 17S RGE 15W
Permanent Datum GROUND LEVEL Elevation 1987
Log Measured From KELLY BUSHING 8' A.G.L.
Drilling Measured From KELLY BUSHING
Other Services
CDL/CNL
DIL
Elevation
K.B. 1995
D.F. 1993
G.L. 1987

Date	8/12/11
Run Number	TWO
Depth Driller	3625
Depth Logger	3624
Bottom Logged Interval	3622
Top Log Interval	3000
Casing Driller	8 5/8"@939'
Casing Logger	939'
Bit Size	7 7/8"
Type Fluid in Hole	CHEMICAL MUD
Density / Viscosity	9.1/48
pH / Fluid Loss	10.5/8.8
Source of Sample	FLOWLINE
Rm @ Meas. Temp	.650@90F
Rmt @ Meas. Temp	.488@90F
Rmc @ Meas. Temp	.780@90F
Source of Rmf / Rmc	MEASUREMENT
Rm @ BHT	.518@113F
Time Circulation Stopped	2 HOURS
Time Logger on Bottom	
Maximum Recorded Temperature	113F
Equipment Number	4010
Location	HAYS, KANSAS
Recorded By	JEFF GRONWEG
Witnessed By	STEVE MURPHY

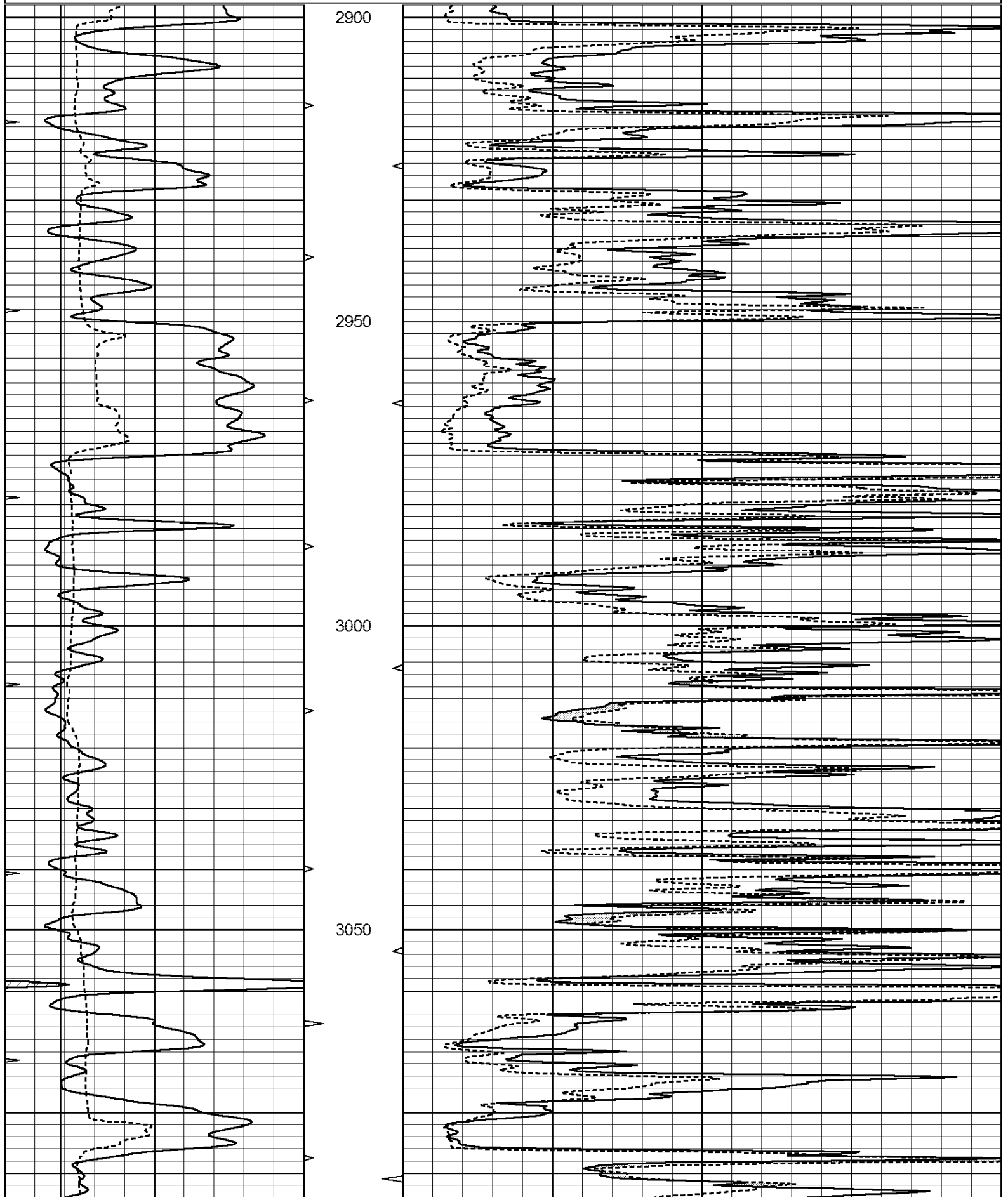
<<< Fold Here >>>

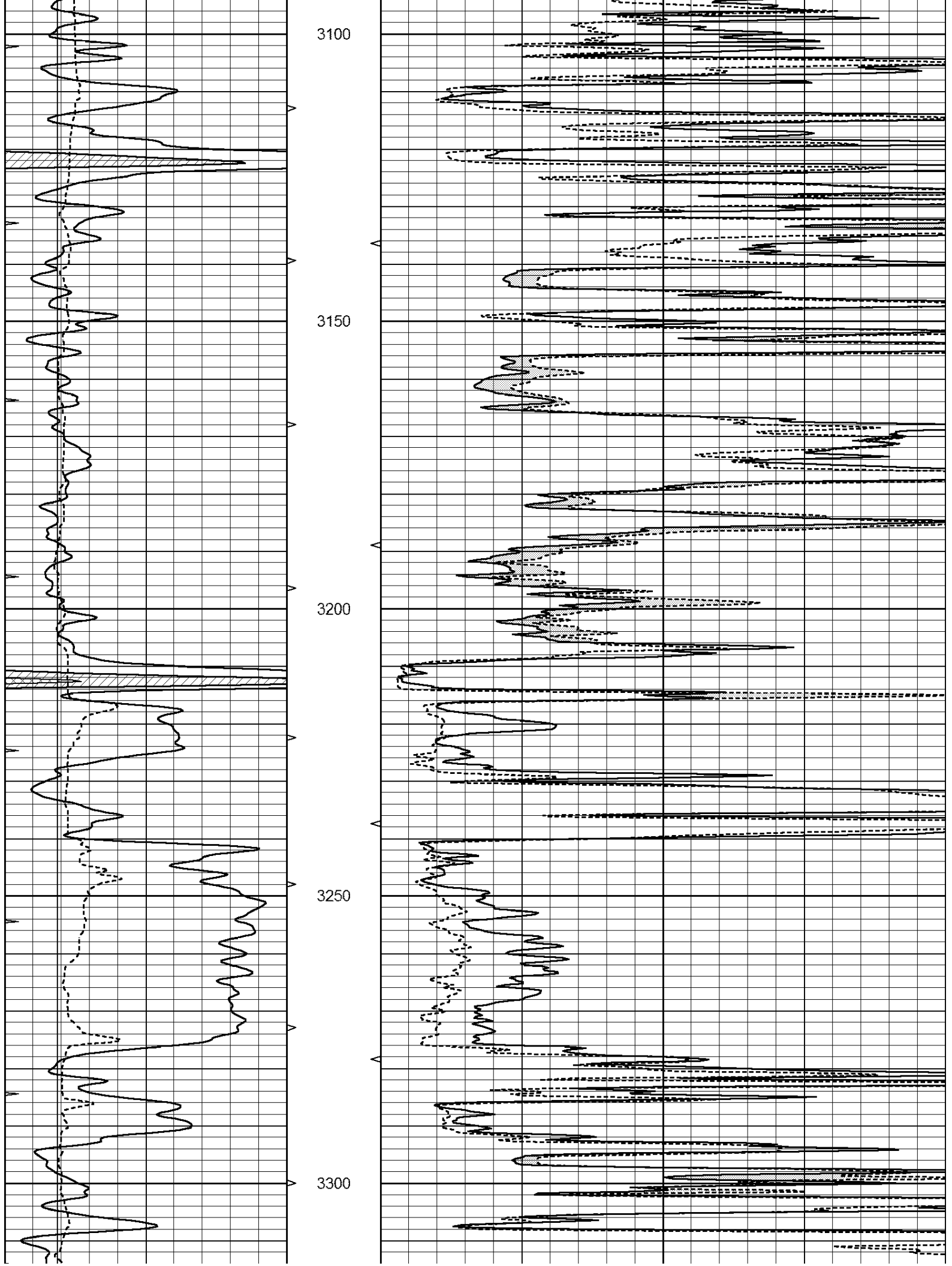
All interpretations are opinions based on inferences from electrical or other measurements and we cannot and do not guarantee the accuracy or correctness of any interpretation, and we shall not, except in the case of gross or willful negligence on our part, be liable or responsible for any loss, costs, damages, or expenses incurred or sustained by anyone resulting from any interpretation made by any of our officers, agents or employees. These interpretations are also subject to our general terms and conditions set out in our current Price Schedule.

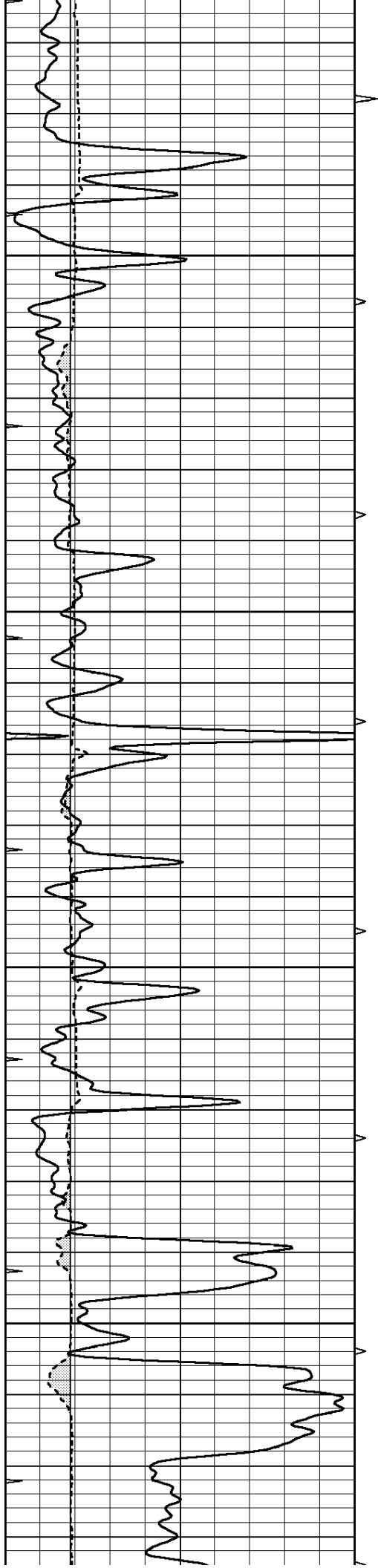
Comments

THANK YOU FOR USING SUPERIOR WELL SERVICE HAYS, KANSAS (785) 628-6395
DIRECTIONS
INTERSECTION OF HWY 4 & OLMITZ BLACKTOP - 1/4 MILE NORTH
EAST & NORTH INTO

0	GAMMA RAY (GAPI)	150	ABHV	0	MEL1.5 (Ohm-m)	40
6	CALIPER (in)	16	10 (ft3)	0	MEL2.0 (Ohm-m)	40
0	MINMK	20	TBHV			
			0 (ft3)	10		





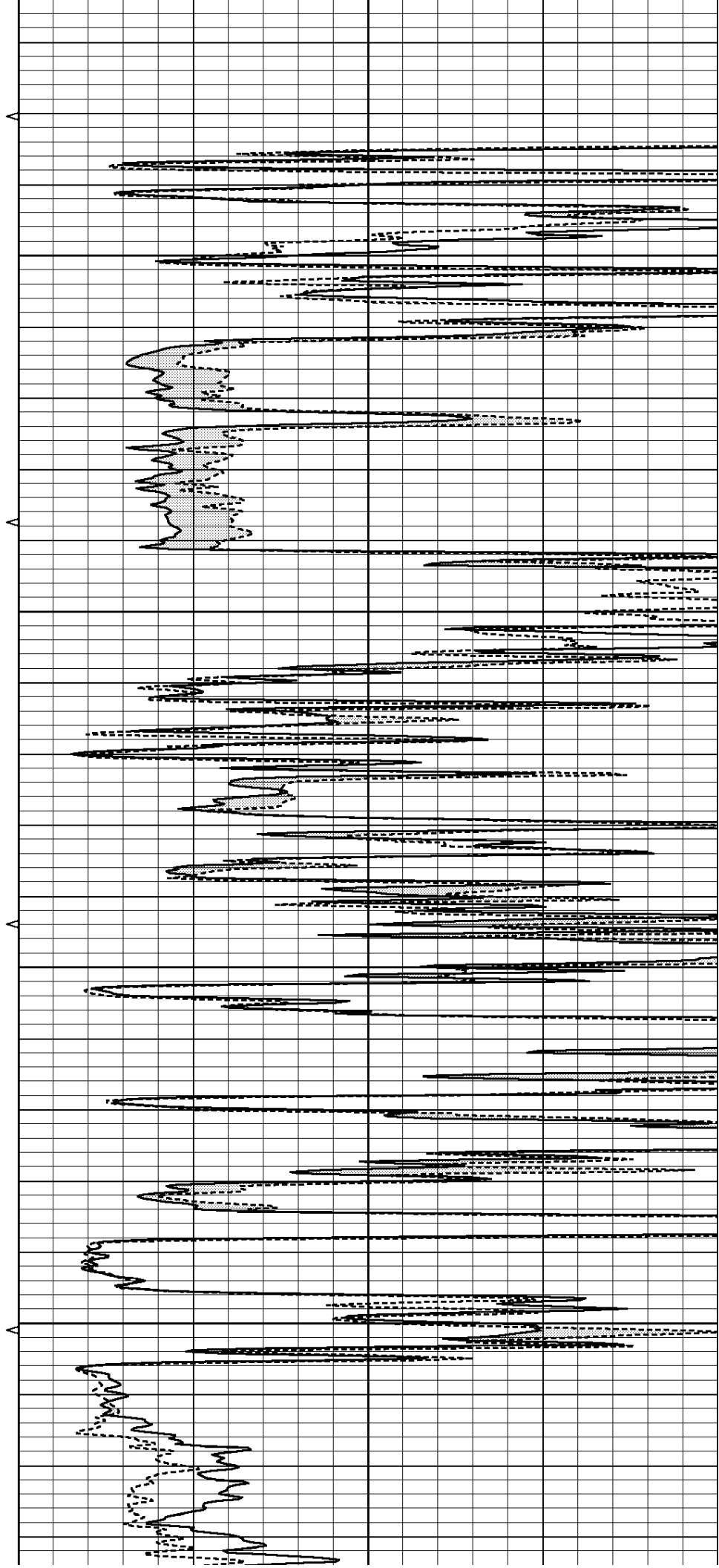


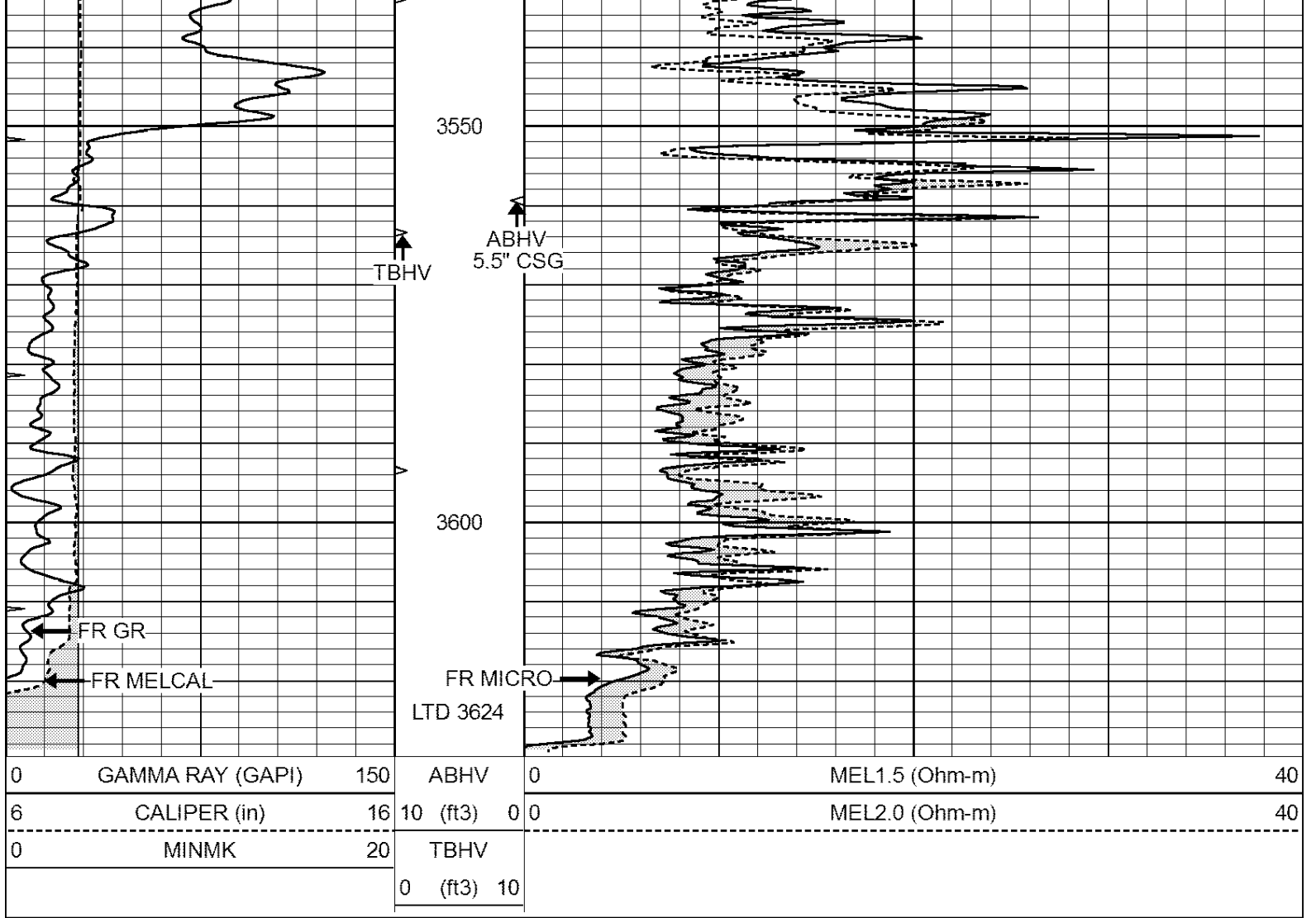
3350

3400

3450

3500



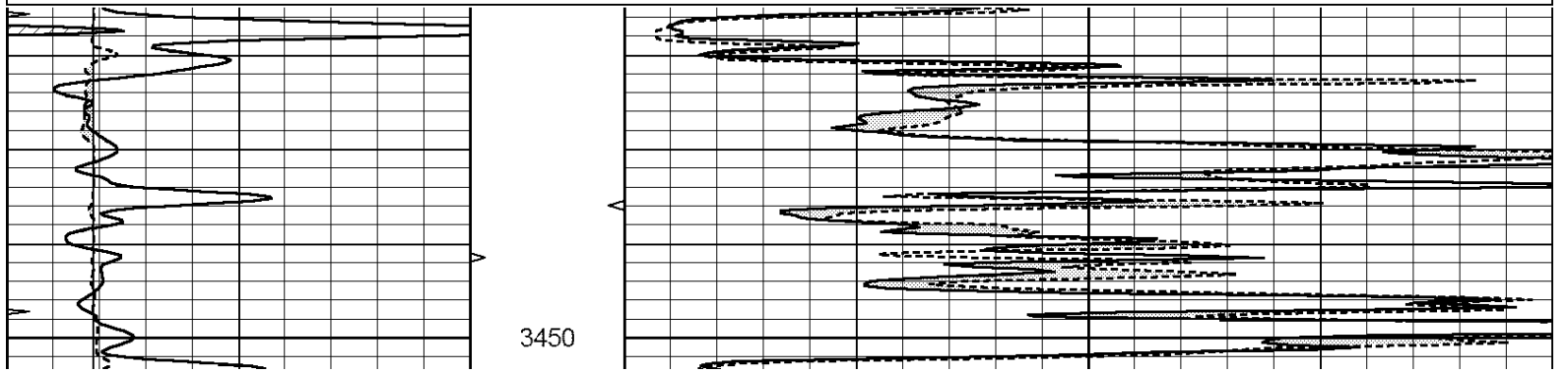


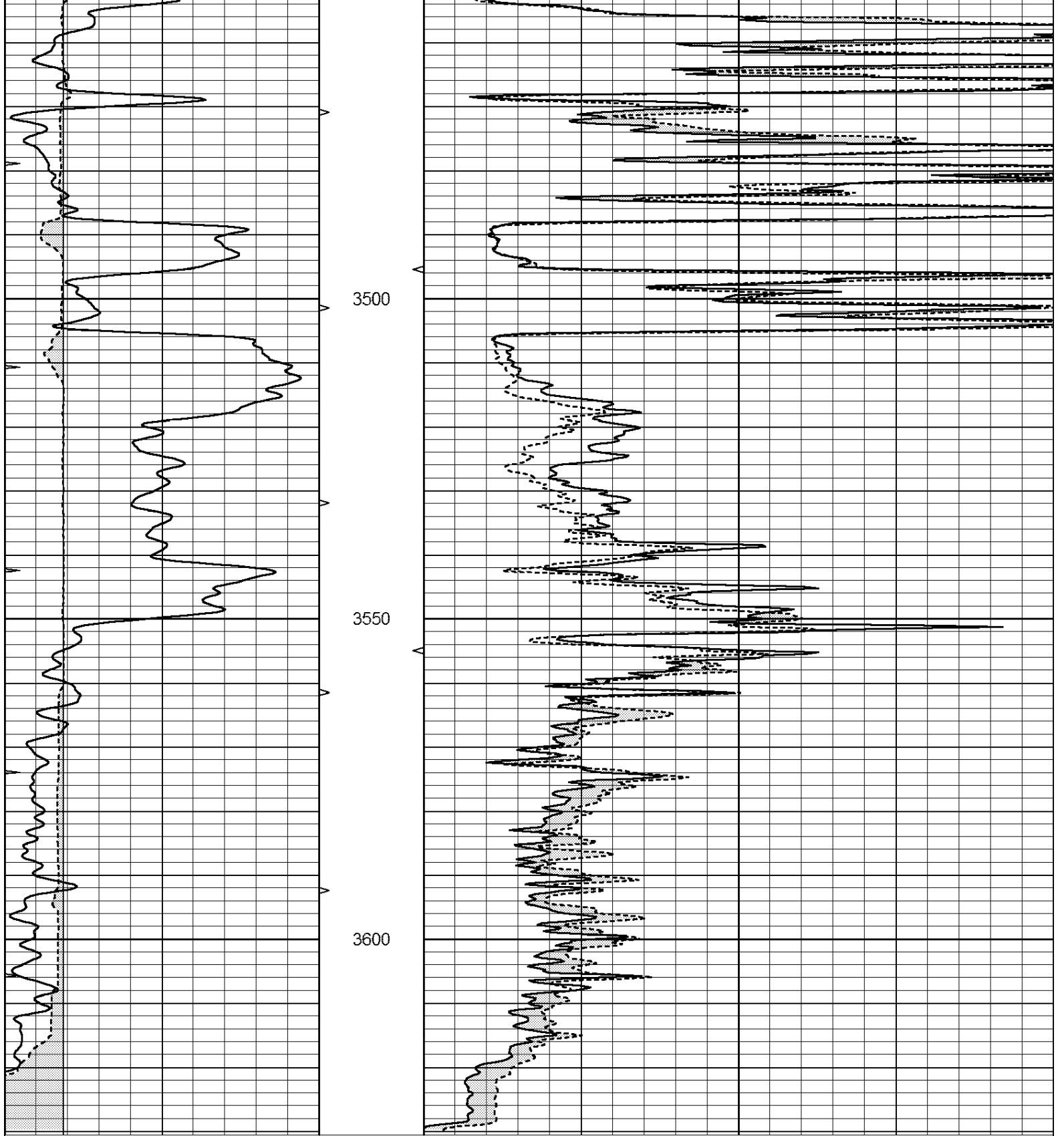
SUPERIOR
Hays,
Kansas

REPEAT SECTION

Database File: 007280ddn.db
 Dataset Pathname: pass4.3
 Presentation Format: micro
 Dataset Creation: Fri Aug 12 11:03:27 2011 by Calc Open-Cased 110302
 Charted by: Depth in Feet scaled 1:240

0	GAMMA RAY (GAPI)	150	ABHV	0	MEL1.5 (Ohm-m)	40
6	CALIPER (in)	16	10 (ft3)	0 0	MEL2.0 (Ohm-m)	40
0	MINMK	20	TBHV			
			0 (ft3)	10		





0	GAMMA RAY (GAPI)	150	ABHV	0	MEL1.5 (Ohm-m)	40
6	CALIPER (in)	16	10 (ft3)	0	MEL2.0 (Ohm-m)	40
0	MINMK	20	TBHV			
			0 (ft3)	10		

Calibration Report

Database File: 007280ddn.db
 Dataset Pathname: pass5.1
 Dataset Creation: Fri Aug 12 11:01:05 2011 by Calc Open-Cased 110302

MICRO Calibration Report

Serial Number: 2
 Tool Model: PROBE
 Performed: Thu Aug 04 05:51:30 2011

Caliper Calibration: Gain=3.753 Offset=3.557
 Low Cal High Cal
 References 7.600 14.000
 Readings 1.130 2.835

1.5" Calibration: Gain=40.000 Offset=0.000
 Low Cal High Cal
 References 0.000 20.000
 Readings 0.065 1.210

2" Calibration: Gain=48.000 Offset=1.250
 Low Cal High Cal
 References 0.000 20.000
 Readings 0.012 1.043

Gamma Ray Calibration Report

Serial Number: GR3
 Tool Model: OPEN
 Performed: Tue Aug 09 10:34:44 2011

Calibrator Value: 200.0 GAPI
 Background Reading: 3.0 cps
 Calibrator Reading: 186.0 cps
 Sensitivity: 1.0000 GAPI/cps