



**GAMMA RAY
CEMENT BOND
COMPLETION LOG**

Company: POSTROCK ENERGY CORP.
Well: HOGAN, CARL C. #24-1
Field: CHEROKEE BASIN CBM

County: LABETTE
State: KANSAS
Location: 1980 FSL & 1980 FWL
API #: 15-099-24649-00-00
Other Services: OPEN HOLE 6-20-2011

Company: POSTROCK ENERGY CORP.
Well: HOGAN, CARL C. #24-1
Field: CHEROKEE BASIN CBM
County: LABETTE
State: KANSAS
Location: 1980 FSL & 1980 FWL
API #: 15-099-24649-00-00
Other Services: OPEN HOLE 6-20-2011

SEC 24 TWP 32S RGE 18E
Permament Datum: G.L.
Log Measured From: G.L.
Drilling Measured From: G.L.
Date: 7-14-2011
Run Number: 2 NW
Depth Driller: 933'
Depth Logger: 915.3'

Top Log Interval: SURFACE
Bottom Logged Interval: 915.3'
Fluid Level: FULL
Type Fluid: WATER
Production Ceiling: 5.9" @ 921"
Max. Recorded Temp.: @
Estimated Cement Top: SURFACE
Calculated Cement Top: SURFACE
Amount & Type Cement: SURFACE
Amount & Type Annular: SURFACE
Drilling Contractor: SURFACE
Equipment Number: 107
Location: UDEN D.
Recorded By: MICHEL S. J.

Witnessed By: MICHEL S. J.

<<< Fold Here >>>

All interpretations are opinions based on inferences from electrical or other measurements and we cannot and do not guarantee the accuracy or correctness of any interpretation, and we shall not, except in the case of gross or willful negligence on our part, be liable or responsible for any loss, costs, damages, or expenses incurred or sustained by anyone resulting from any interpretation made by any of our officers, agents or employees. These interpretations are also subject to our general terms and conditions set out in our current Price Schedule.

Comments

SET HORTON RETRIEVABLE BRIDGE PLUG AT 335' ON 7-19-11

THANK YOU

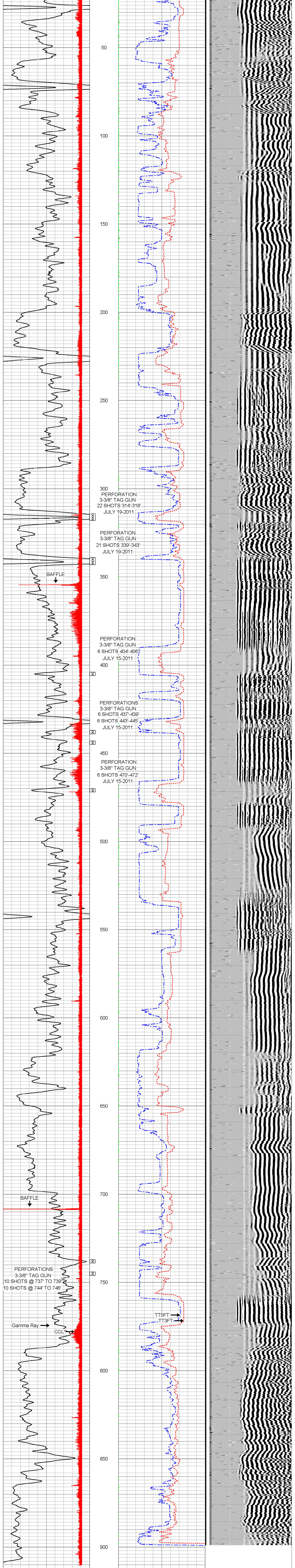
Sensor	Offset (ft)	Schematic	Description	Len (ft)	OD (in)	Wt (lb)
			tekco tekco cent.	2.17	1.69	5.00
WVF3FT	17.50		CBLTEKCO-TEKCO2RCVR (TEKCO169)	9.75	1.69	50.00
WVF5FT	16.50		1 11/16" TEKCO 2 RCVR DELWARE			
WVFCAL	13.08		tekco tekco cent.	2.17	1.69	5.00
WVFSYNC	13.08					
GR	7.59		GR-TITAN 169 (TIT169_001) Titan 1 11/16" Gamma Ray	4.75	1.69	20.00
CCL	5.05		CCL-TITAN 169 (TIT169) Titan 1 11/16" Logging CCL	1.83	1.69	7.50
NEU	0.63		NEU-TITAN (TIT801) TITAN 1 11/16" Neutron	4.33	1.69	25.00

Dataset: hogan, carl c #24-1.db: field/well/run1/pass1
Total Length: 25.00 ft
Total Weight: 112.50 lb
O.D.: 1.69 in

Database File: g:\hogan, carl c #24-1.db
Dataset Pathname: pass1
Presentation Format: scbl_dr
Dataset Creation: Thu Jul 14 14:02:57 2011 by Log Std Casedhole 07122
Charted by: Depth in Feet scaled 1:240

0 Gamma Ray 150
9 CCL -1

0 Amplitude (mV) 150 200 VDL 1200
1200 TT3FT (usec) 200
1500 TT5FT (usec) 200



0 Gamma Ray 150
9 CCL -1

0 Amplitude (mV) 150 200 VDL 1200
1200 TT3FT (usec) 200
1500 TT5FT (usec) 200



Company: POSTROCK ENERGY CORP.
Well: HOGAN, CARL C. #24-1
Field: CHEROKEE BASIN CBM
County: LABETTE SEC. 24 TWP. 32S RGE. 18E
State: KANSAS
Date: 7-14-2011