



MIDWEST SURVEYS
 LOGGING - PERFORATING - CONSULTING SERVICES
 P.O. Box 68, Osawatomie, KS 66064
 913 / 755 - 2128

GAMMA RAY / NEUTRON / CCL

File No. _____

Company Oil Sources Corporation

Well Two Bros No. 1-3

Field Paola - Rantoul

County Franklin State Kansas

Location 390' FNL & 845' FEL
 SW-NE-NW-NE

Sec 5 Permament Datum Log Measured From Drilling Measured From

Date 10-17-2011

Run Number One

Depth Drifter 763.0

Depth Logger 751.4

Bottom Logged Interval 750.4

Top Log Interval 20.0

Fluid Level Full

Type Fluid Water

Density / Viscosity NA
 Salinity - PPM Cl NA
 Max Recorded Temp NA
 Estimated Cement Top 0.0
 Equipment No. 107
 Recorded By Steve Winkler
 Witnessed By Kevin Klewano

BORE-HOLE RECORD		CASING RECORD	
RUN No.	BIT FROM TO	FROM TO	WGT. FROM TO
One	9.875" 0.0	21.35 0.0	7.07" 0.0
Two	5.625" 21.35	793.0 2.875"	0.0 756.0

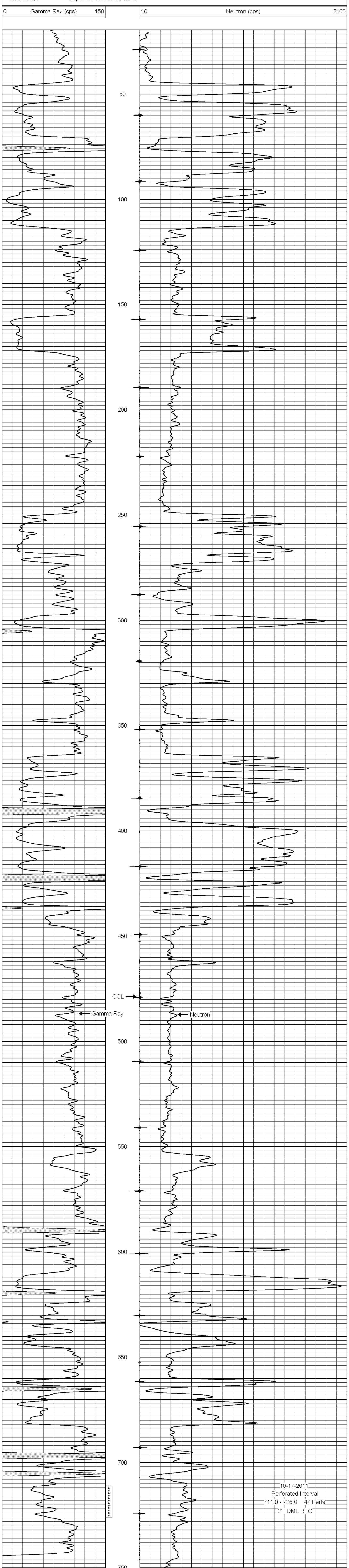
<<< Fold Here >>>

All interpretations are opinions based on inferences from electrical or other measurements and we cannot and do not guarantee the accuracy or correctness of any interpretation, and we shall not, except in the case of gross or willful negligence on our part, be liable or responsible for any loss, costs, damages, or expenses incurred or sustained by anyone resulting from any interpretation made by any of our officers, agents or employees. These interpretations are also subject to our general terms and conditions set out in our current Price Schedule.

Comments

Drilling Contractor :
 McGown Drilling, Inc.

Database File: 2bros3i.db
 Dataset Pathname: pass1
 Presentation Format: gr-n-ccl
 Dataset Creation: Mon Oct 17 12:40:15 2011 by Log Std Casedhole 07122
 Charted by: Depth in Feet scaled 1:240



10-17-2011
 Perforated Interval
 711.0 - 726.0 47 Perfs
 2" DML RTG