

HALLIBURTON

ANNULAR HOLE VOLUME PLOT

EOG RESOURCES
TIMKEN 22 #1
WILLIS
STEVENS
KANSAS

COMPANY EOG RESOURCES
WELL TIMKEN 22 #1
FIELD WILLIS
COUNTY STEVENS
STATE KANSAS

API No. 15-189-22770
Location 1840' FNL & 780' FWL
Sect. 22 Twp. 32S Rge. 37W
GROUND LEVEL
KELLY BUSHING
KELLY BUSHING
Elev. 3121.0 ft
Elev.: K.B. 3132.0 ft
D.F. 3131.0 ft
G.L. 3121.0 ft
Other Services:
BSAT
ACRT
SDL / DSN

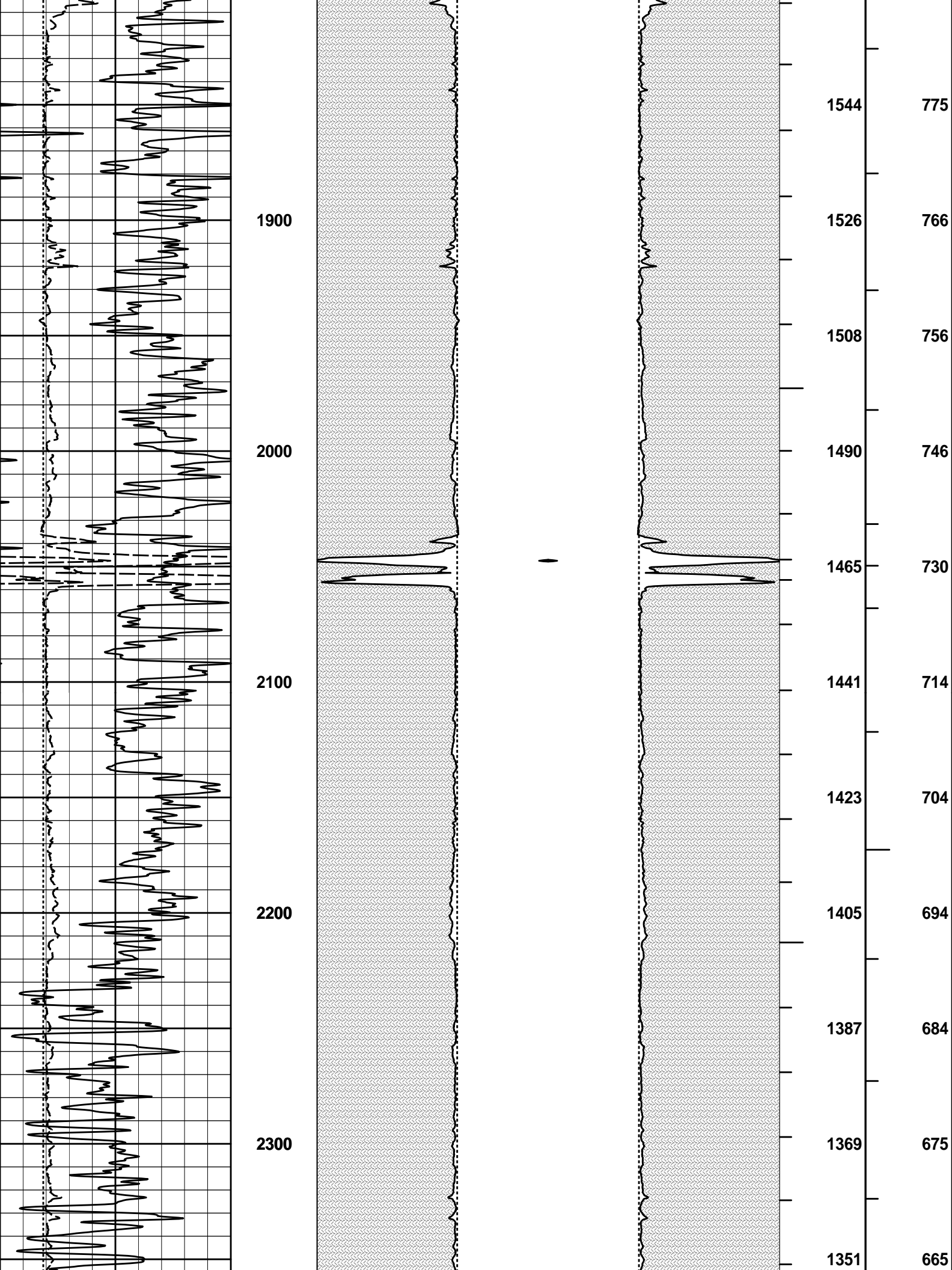
COMPANY
WELL
FIELD
COUNTY
STATE

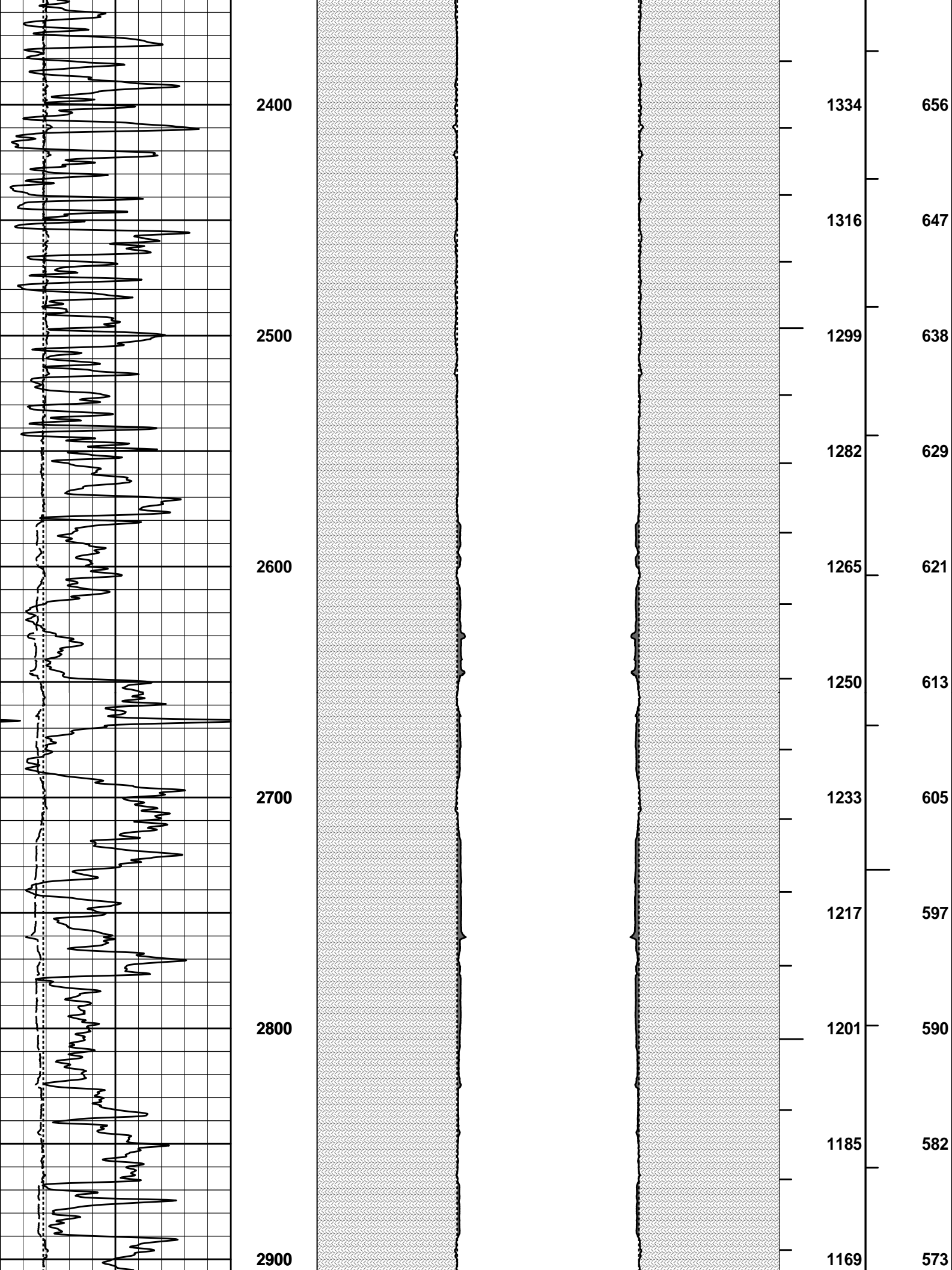
Permanent Datum Log measured from
Drilling measured from
Date
Run No.
Depth - Driller
Depth - Logger
Bottom - Logged Interval
Top - Logged Interval
Casing - Driller
Casing - Logger
Bit Size
Type Fluid in Hole
Density
PH
Source of Sample
Rm @ Meas. Temperature
Rmf @ Meas. Temperature
Rmc @ Meas. Temperature
Source Rmf
Rm @ BHT
Time Since Circulation
Time on Bottom
Max. Rec. Temperature
Equipment Location
Recorded By
Witnessed By

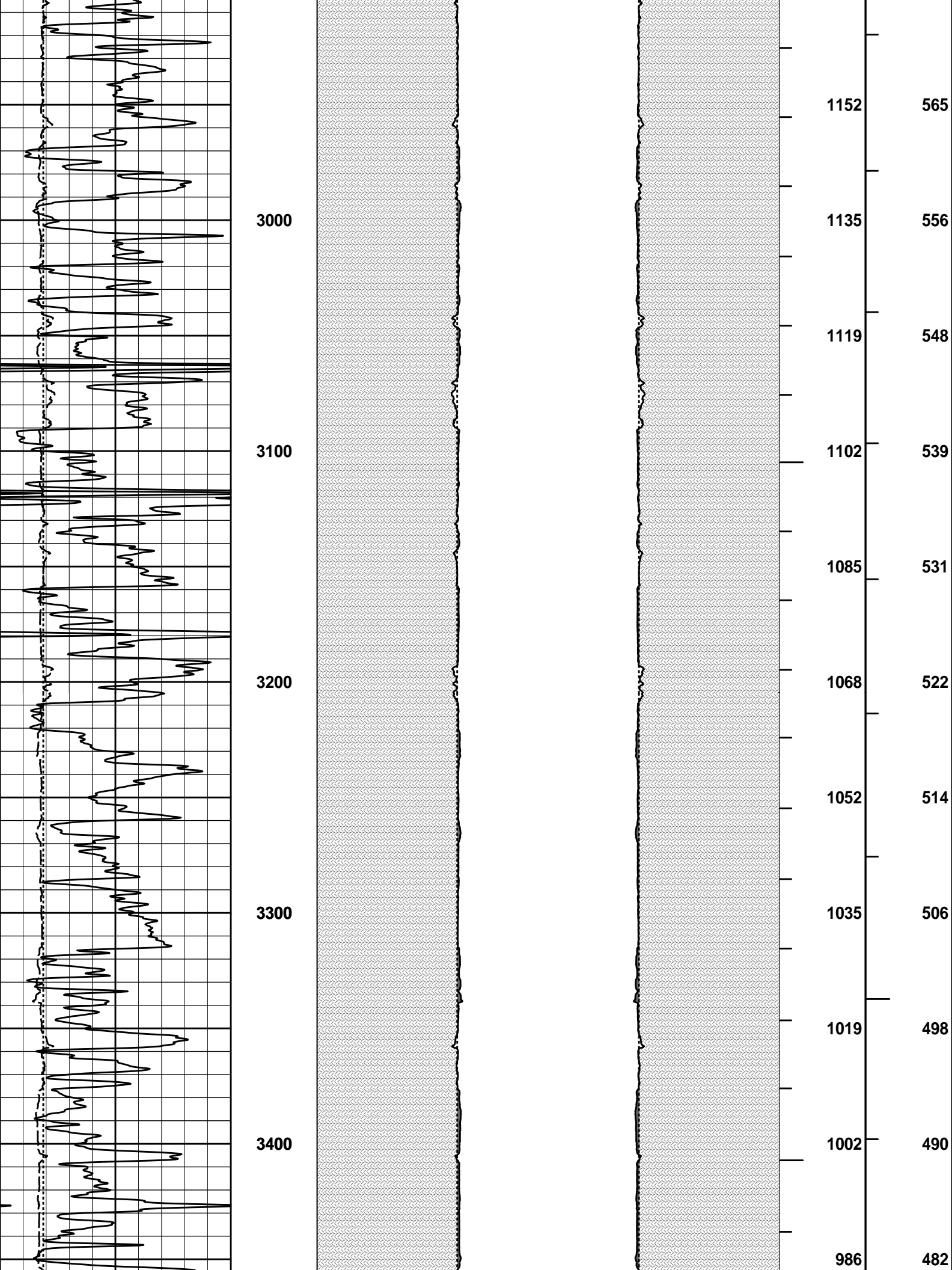
Permanent Datum Log measured from	KELLY BUSHING	Elev. 3121.0 ft
Drilling measured from	KELLY BUSHING	11.0 ft above perm. Datum
Date	02-Jul-11	
Run No.	ONE	
Depth - Driller	6500.00 ft	
Depth - Logger	6500.0 ft	
Bottom - Logged Interval	6462.0 ft	
Top - Logged Interval	1730.0 ft	
Casing - Driller	8.625 in @ 1730.0 ft	@
Casing - Logger	1730.0 ft	@
Bit Size	7.875 in	@
Type Fluid in Hole	WATER BASED MUD	
Density	9.2 ppg	63.00 s/qt
PH	10.00 pH	8.8 cp/m
Source of Sample	FLOW LINE	
Rm @ Meas. Temperature	1.380 ohmm @ 85.00 degF	@
Rmf @ Meas. Temperature	1.17 ohmm @ 84.00 degF	@
Rmc @ Meas. Temperature	1.600 ohmm @ 84.00 degF	@
Source Rmf	MEAS @ MEAS	
Rm @ BHT	1.02 ohmm @ 145.0 degF	@
Time Since Circulation	3.7 hr	
Time on Bottom	02-Jul-11 07:07	
Max. Rec. Temperature	145.0 degF @ 6500.0 ft	@
Equipment Location	10546696 LIBERAL	
Recorded By	S. JUNG	
Witnessed By	S. MUELLER	

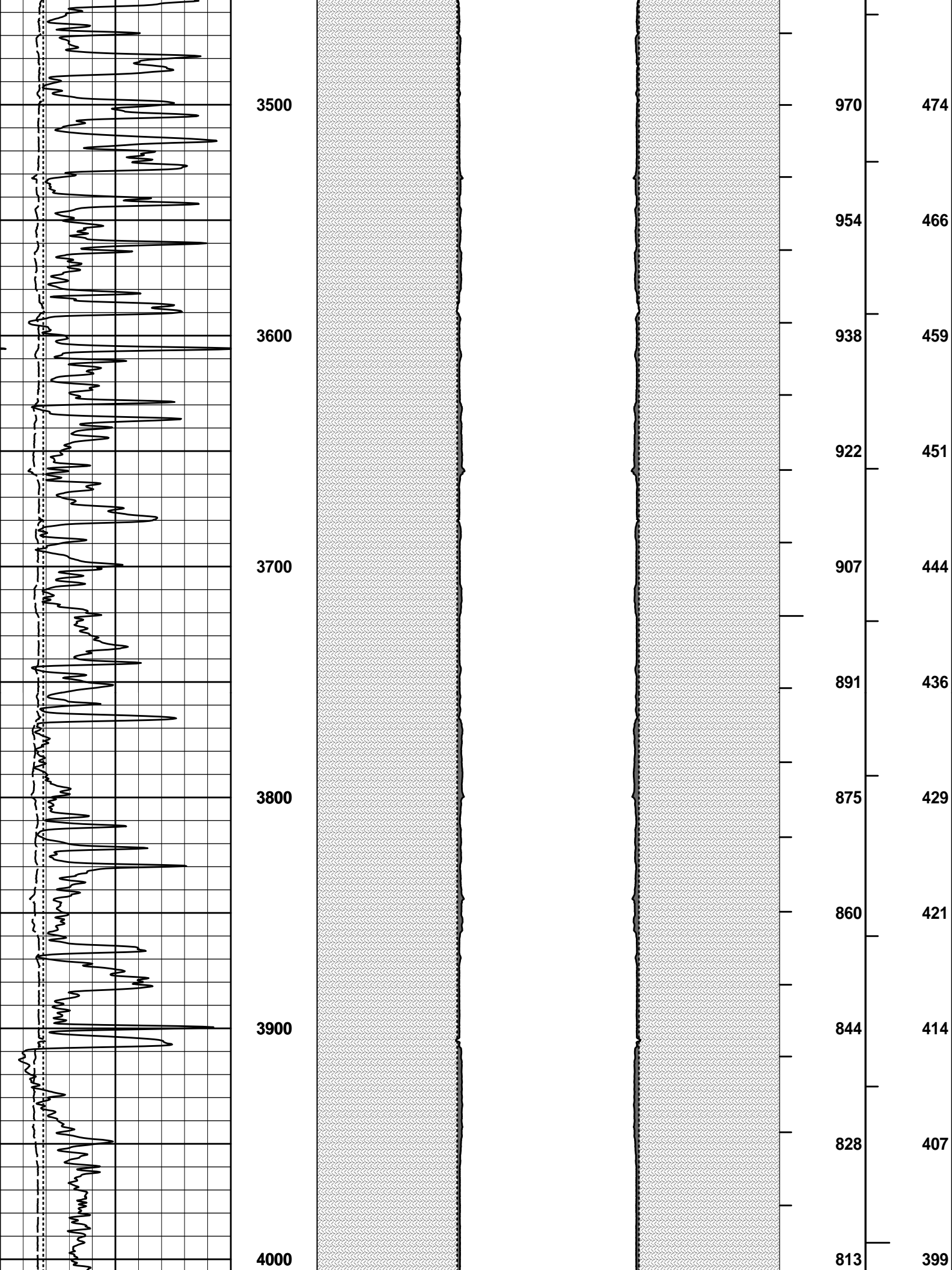
Fold here

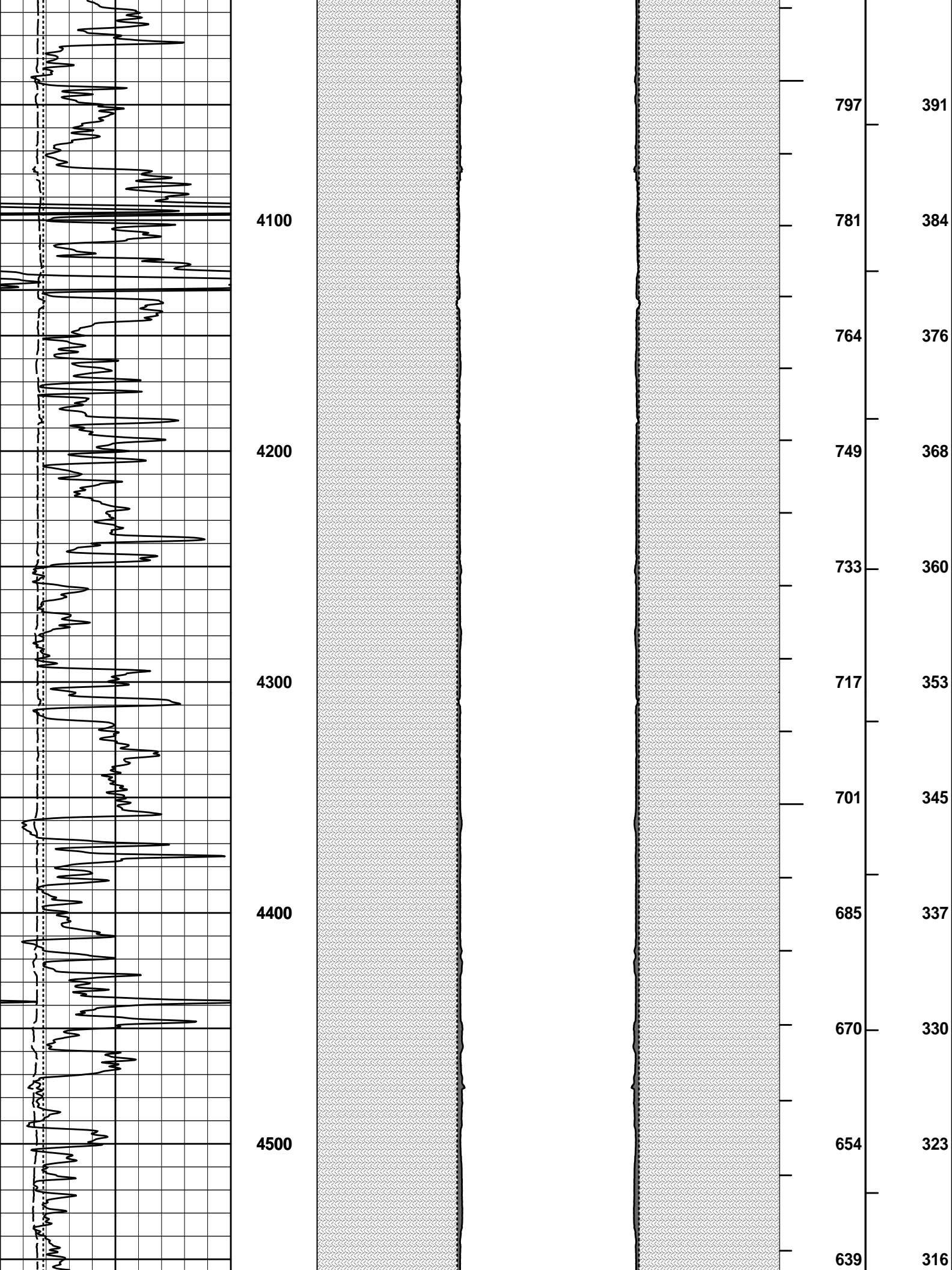
Service Ticket No.: 8284031		API Serial No.: 15-189-22770		PGM Version: WL INSITE R3.2.0 (Build 7)			
CHANGE IN MUD TYPE OR ADDITIONAL SAMPLE				RESISTIVITY SCALE CHANGES			
Date	Sample No.			Type Log	Depth	Scale Up Hole	Scale Down Hole
Depth-Driller							
Type Fluid in Hole							
Density	Viscosity						
Ph	Fluid Loss						
Source of Sample				RESISTIVITY EQUIPMENT DATA			
Rm @ Meas. Temp	@	@		Run No.	Tool Type & No.	Pad Type	Tool Pos.
Rmf @ Meas. Temp.	@	@					
Rmc @ Meas. Temp.	@	@					
Source Rmf	Rmc						
Rm @ BHT	@	@					
Rmf @ BHT	@	@					
Rmc @ BHT	@	@					
EQUIPMENT DATA							
GAMMA		ACOUSTIC		DENSITY		NEUTRON	
Run No.	ONE	Run No.		Run No.		Run No.	
Serial No.	11048627	Serial No.		Serial No.		Serial No.	
Model No.	GTET	Model No.		Model No.		Model No.	
Diameter	3.625"	No. of Cent.		Diameter		Diameter	
Detector Model No.	T-102	Spacing		Log Type		Log Type	
Type	SCINT			Source Type		Source Type	
Length	8"	LSA [Y/N]		Serial No.		Serial No.	
Distance to Source	10'	FWDA [Y/N]		Strength		Strength	
LOGGING DATA							
GENERAL		GAMMA		ACOUSTIC		DENSITY	
NEUTRON							

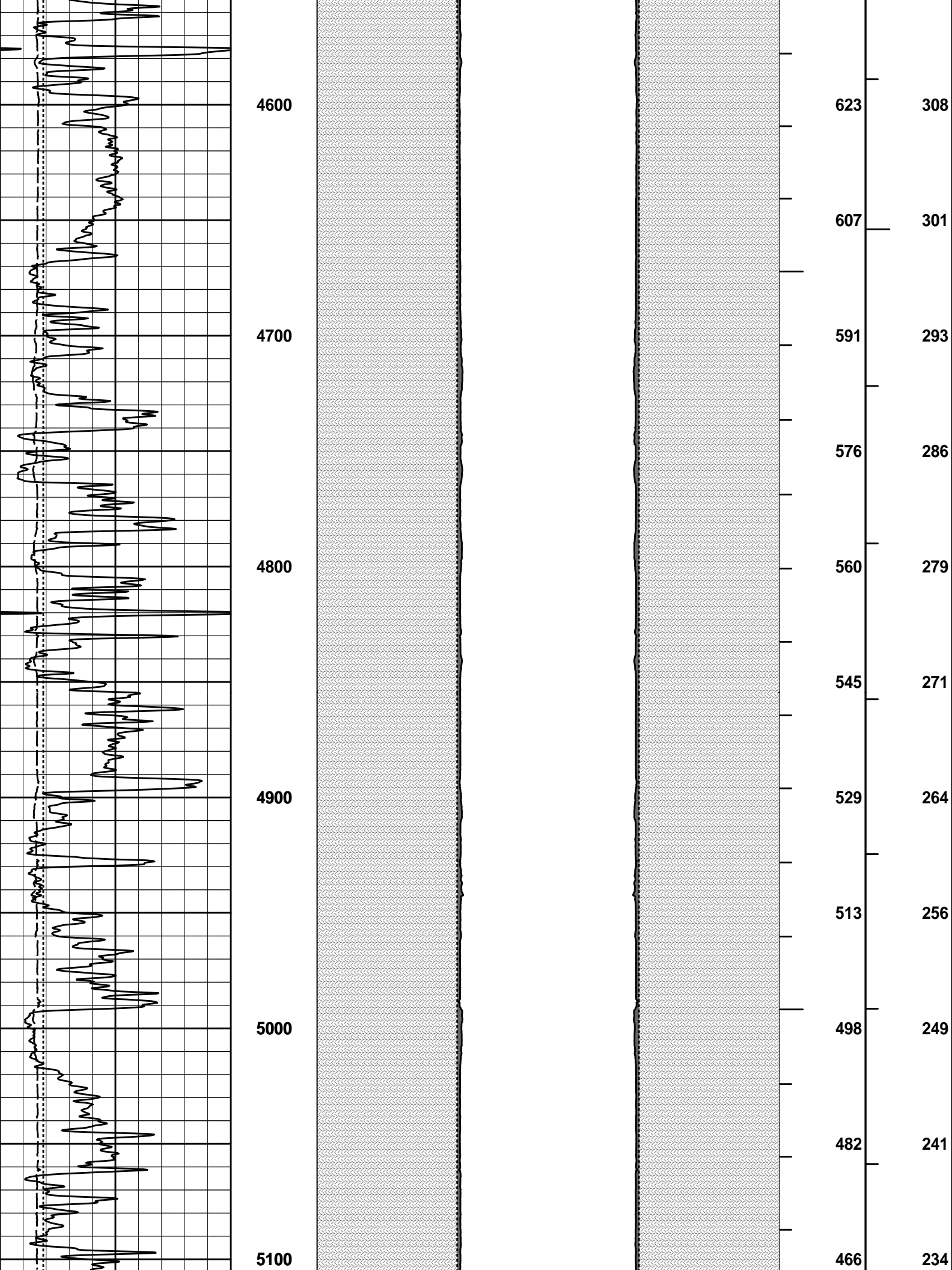


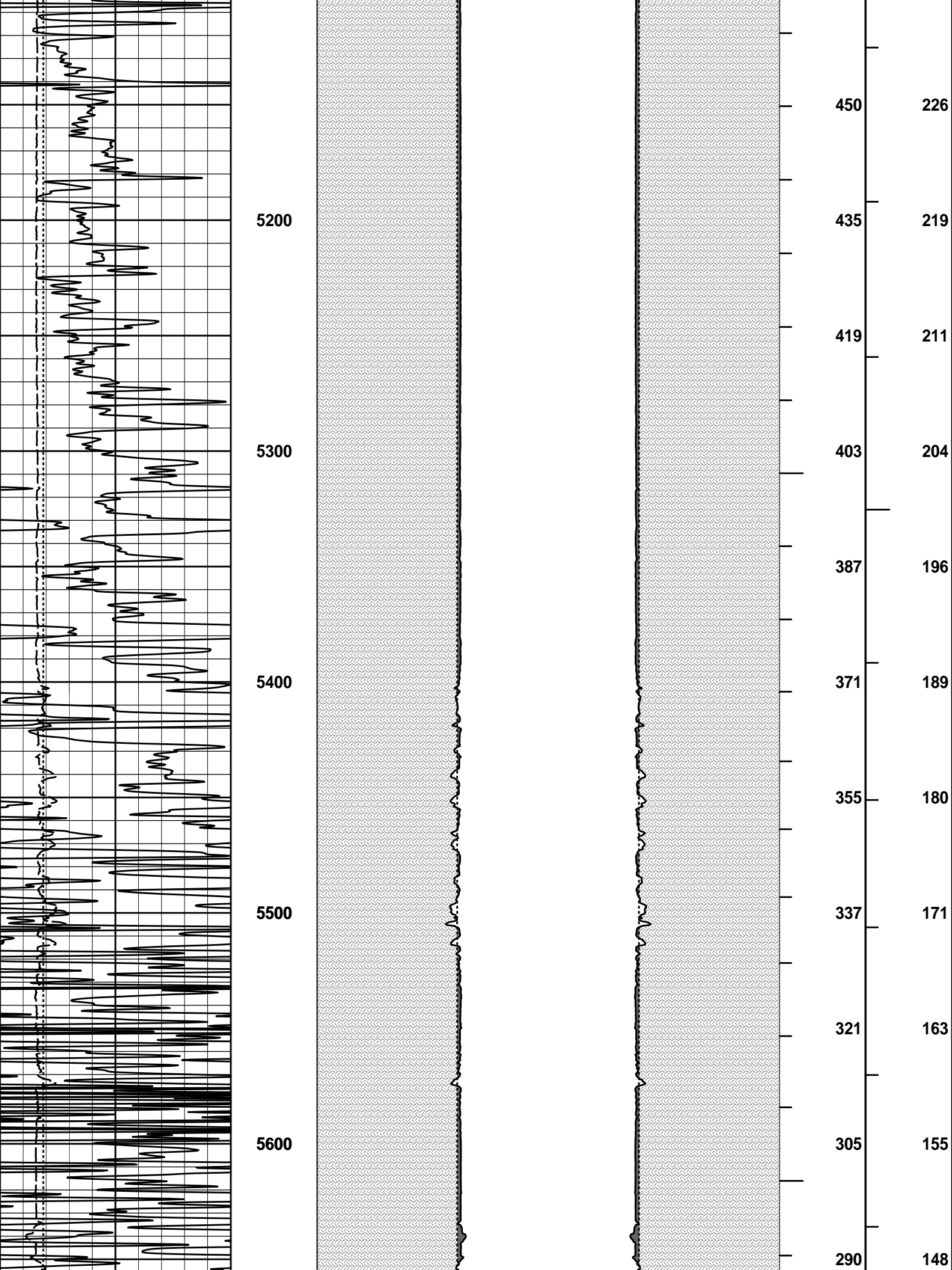


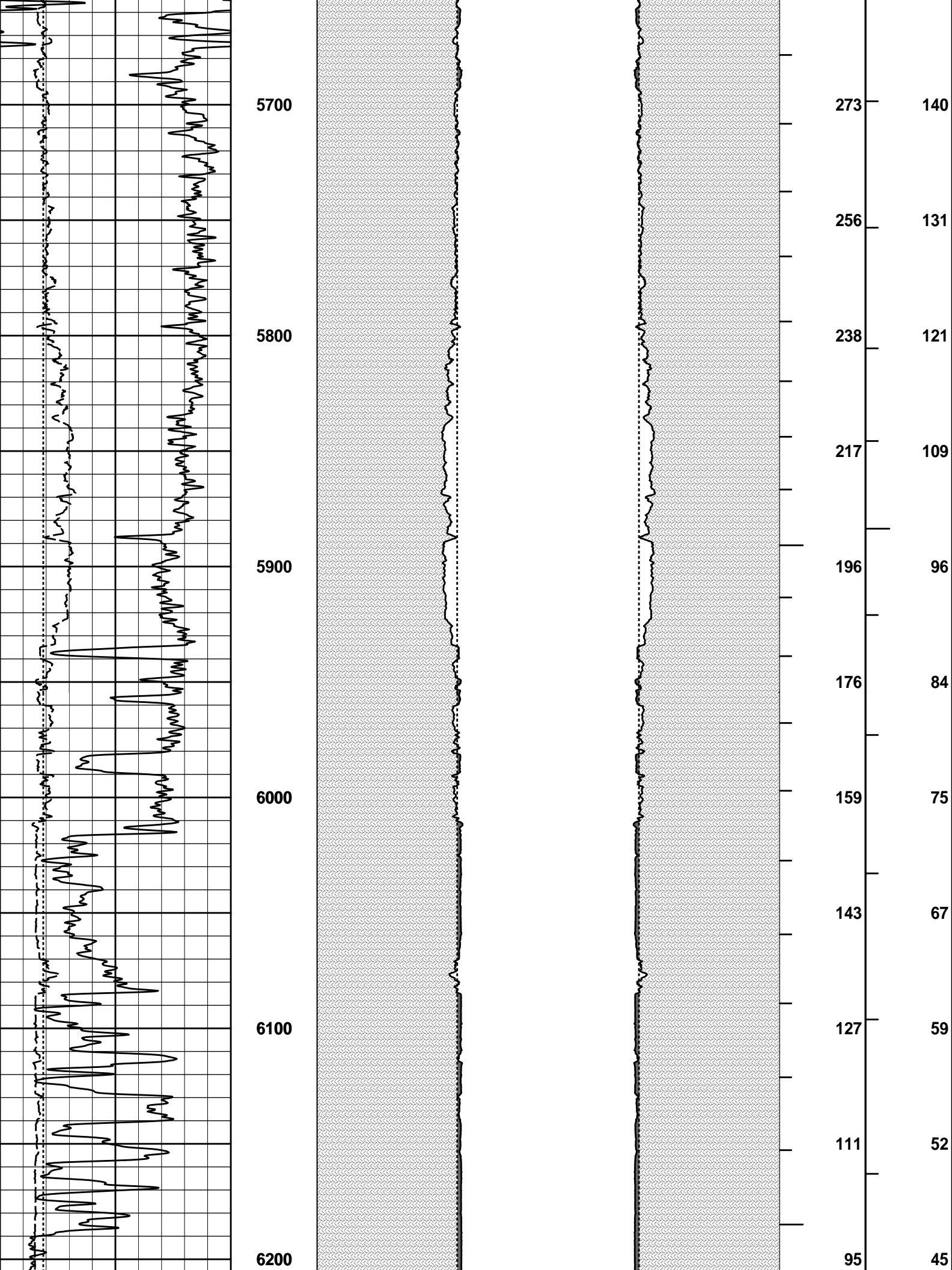


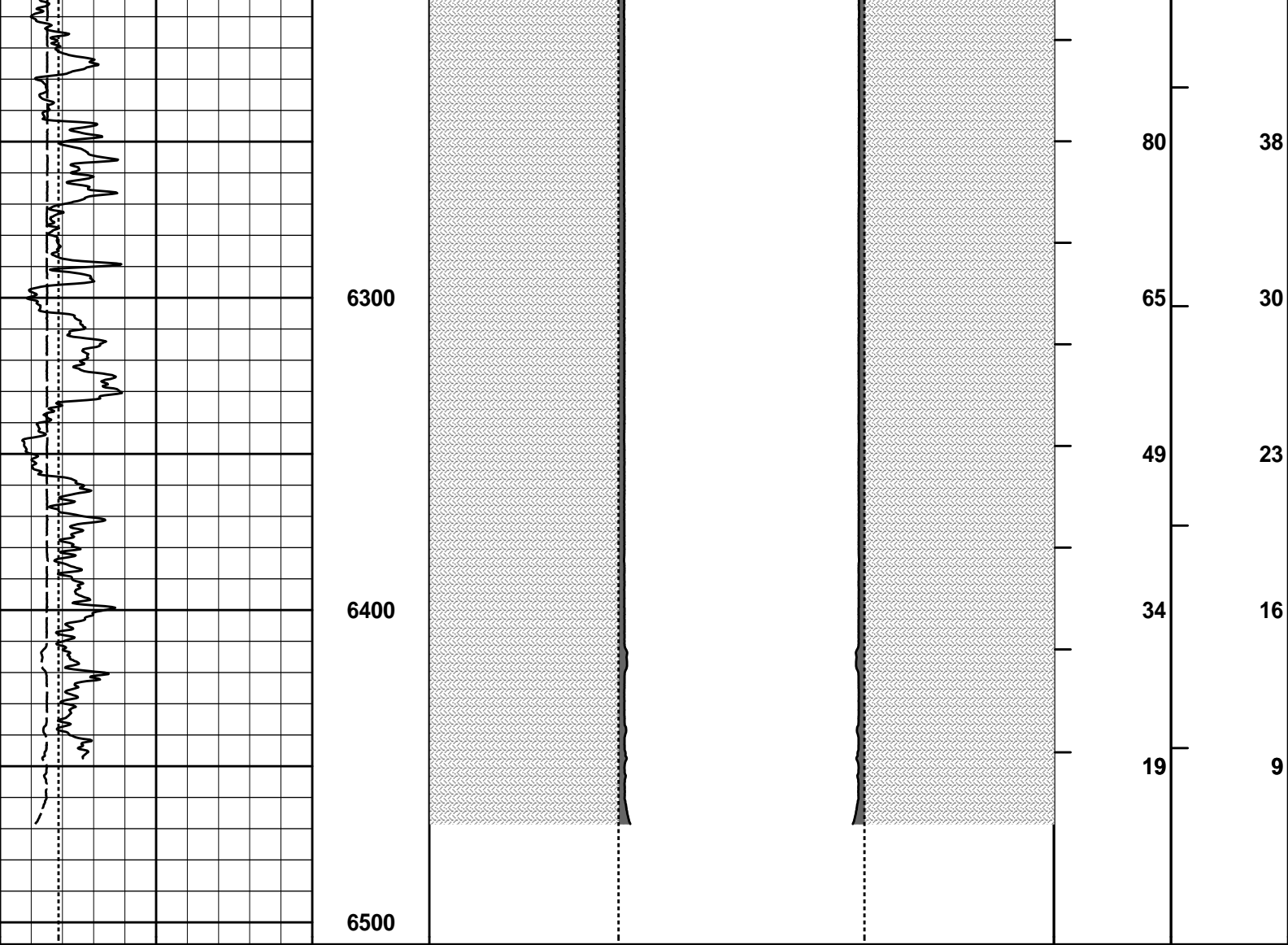












6	Caliper	16	1 : 600 ft	20	Caliper	0 0	20	BHVT	AHVT
	inches				inches				
6	Bit Size	16		20	Bit Size	0 0	20		
	inches								
0	Gamma API	150							
	api								
					MUDCAKE		MUDCAKE		

HALLIBURTON

Plot Time: 02-Jul-11 09:22:14
 Plot Range: 1720 ft to 6507.08 ft
 Data: TIMKEN_22_1\Well Based\DAQ-0001-CSG\
 Plot File: \\-LOCAL-TIMKEN_22_1\0001 SP-GTET-DSN-SDL-BSAT-ACRT-CHIAHV\AHV_2_IQ_LIB

ANNULAR HOLE VOLUME PLOT

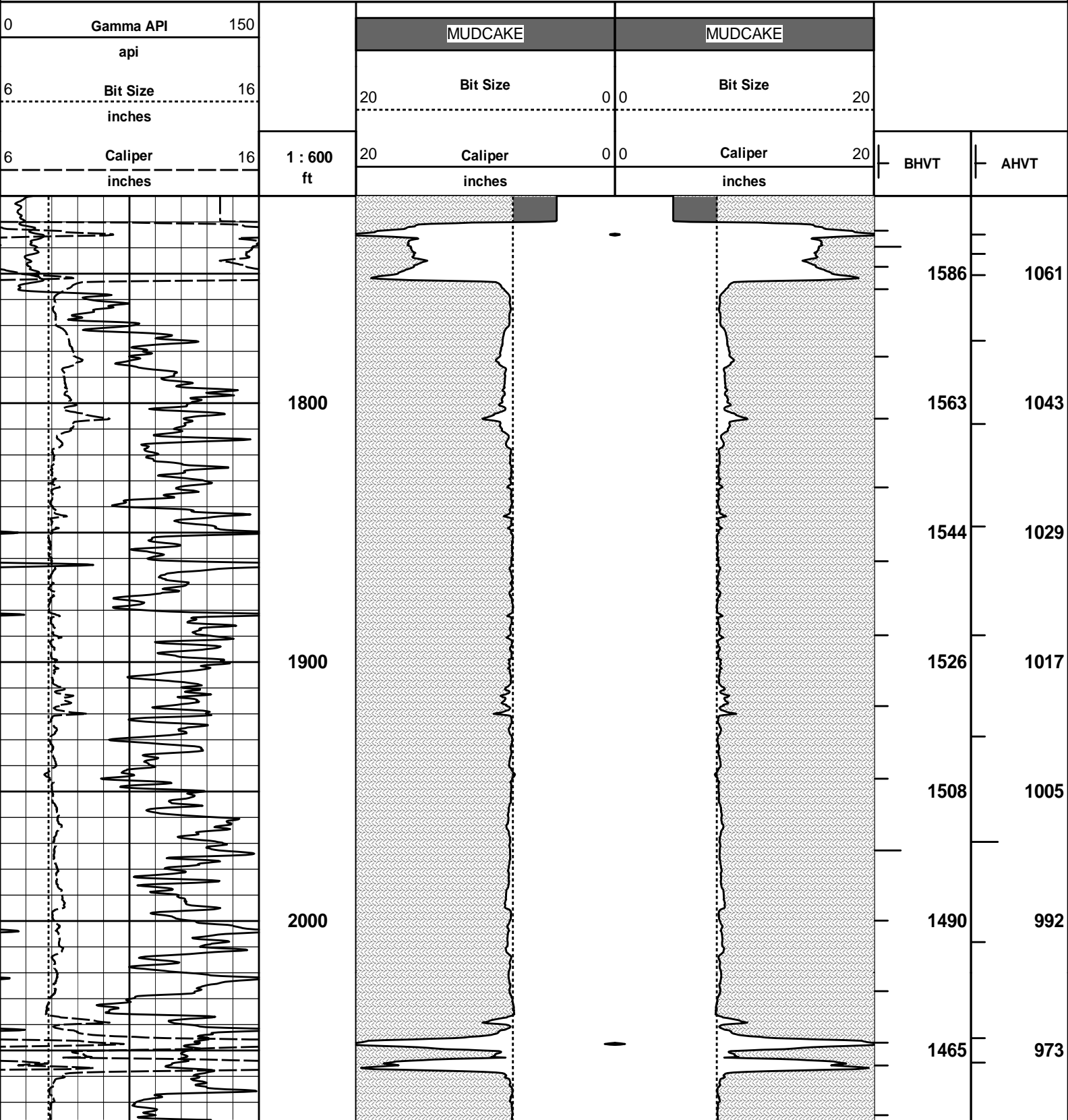
AHV PLOT CALCULATED FOR 5.5" CASING

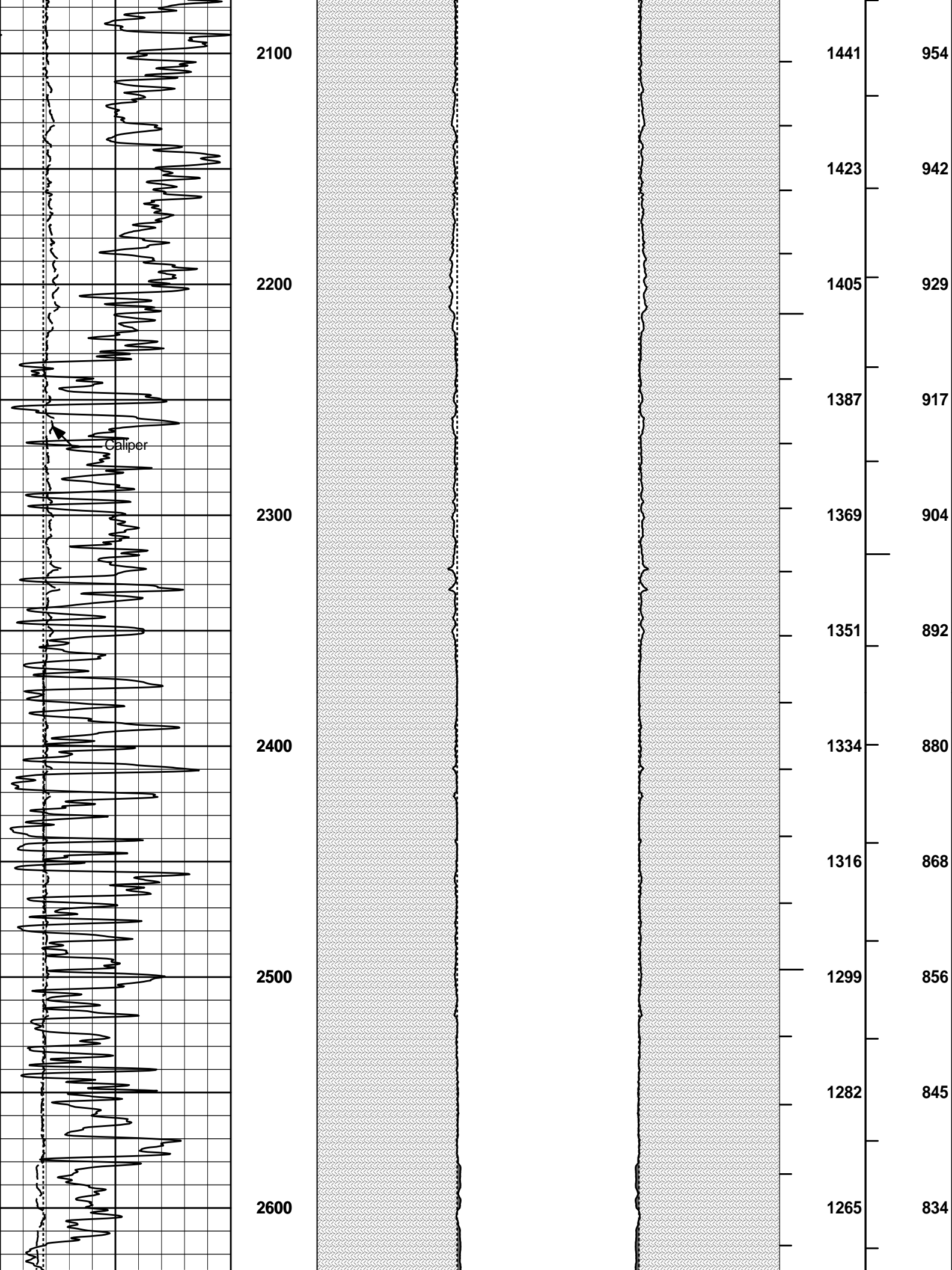
HALLIBURTON

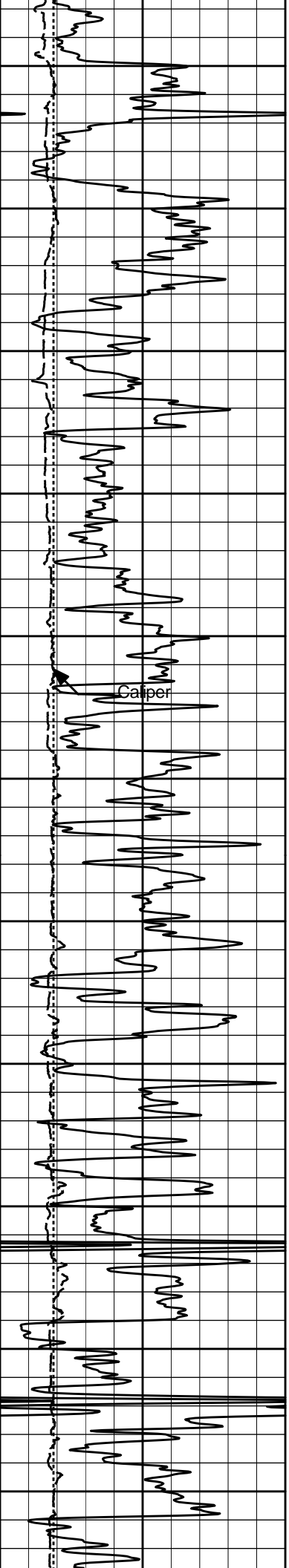
Plot Time: 02-Jul-11 09:22:14
 Plot Range: 1720 ft to 6507.08 ft
 Data: TIMKEN_22_1\Well Based\DAQ-0001-CSG_4_5\
 Plot File: \\-LOCAL-TIMKEN_22_1\0001 SP-GTET-DSN-SDL-BSAT-ACRT-CHIAHV\AHV_4_IQ_LIB

ANNULAR HOLE VOLUME PLOT

AHV PLOT CALCULATED FOR 4.5" CASING







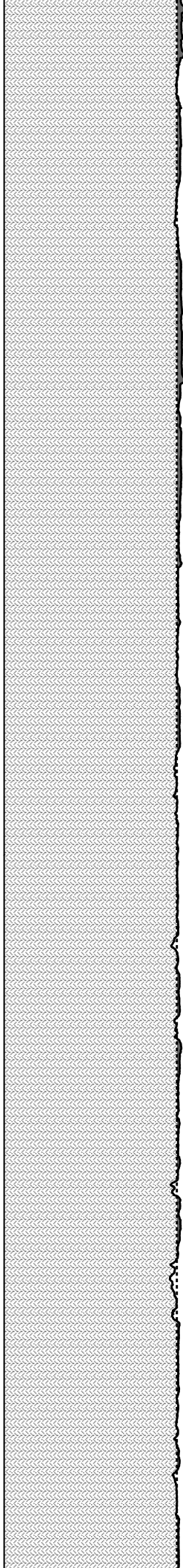
2700

2800

2900

3000

3100



1250

1233

1217

1201

1185

1169

1152

1135

1119

1102

1085

823

813

802

792

781

770

759

748

737

725

714

