



**GAMMA RAY
NEUTRON
COMPLETION LOG**

Company: POSTROCK ENERGY CORP.
Well: BUETOW, KEVIN #29-1
Field: CHEROKEE BASIN CBM
County: MONTGOMERY
State: KANSAS

Location: SEC 29 TWP 34S RGE 17E
Permament Datum: 350' FSL & 550' FEL
Log Measured From: NW SE SE SE
Drilling Measured From: QL
Elevation: 752' EST
K 8
D.F. 752' EST

Date: 6-24-11
Run Number: 2 NW
Depth Driller: 1083'
Depth Logger: 1084.9'

Top Log Interval: 0
Bottom Logged Interval: 1084.9'
Fluid Level: FULL
Type Fluid: WATER
Production Casing: 5" @ TD
Max. Recorded Temp.:
Estimated Cement Top:
Calculated Cement Top:
Amount & Type Cement:
Drilling Contractor:
Equipment Number: 109
Location: SANBORN, G.
Recorded By: MICHELS, J.

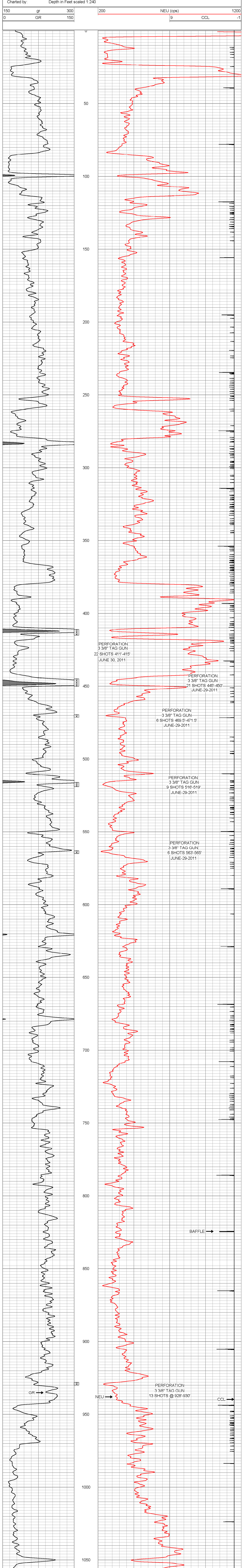
All interpretations are opinions based on inferences from electrical or other measurements and we cannot and do not guarantee the accuracy or correctness of any interpretation, and we shall not, except in the case of gross or willful negligence on our part, be liable or responsible for any loss, costs, damages, or expenses incurred or sustained by anyone resulting from any interpretation made by any of our officers, agents or employees. These interpretations are also subject to our general terms and conditions set out in our current Price Schedule.

Comments
SET HORTON RETRIEVABLE BRIDGE PLUG AT 463' ON 6-29-11
SET HORTON RETRIEVABLE BRIDGE PLUG AT 440' ON 6-30-11
THANK YOU

Sensor	Offset (ft)	Schematic	Description	Len (ft)	OD (in)	Wt (lb)
GR	7.59		GR-TITAN_169 (TIT169_001) Titan 1 11/16" Gamma Ray	4.75	1.69	20.00
CCL	5.05		CCL-TITAN_169 (TIT169) Titan 1 11/16" Logging CCL	1.83	1.69	7.50
NEU	0.63		NEU-TITAN (TIT801) TITAN 1 11/16" Neutron	4.33	1.69	25.00

Dataset: buetow kevin 29-1.db; field/well/run1/pass1
Total Length: 10.92 ft
Total Weight: 52.50 lb
O.D.: 1.69 in

Database File: g:\buetow kevin 29-1.db
Dataset Pathname: pass1
Presentation Format: gr-n-ccl
Dataset Creation: Fri Jun 24 10:33:43 2011 by Log Std Casedhole 09061
Charted by: Depth in Feet scaled 1:240



Company: POSTROCK ENERGY CORP.
Well: BUETOW, KEVIN #29-1
Field: CHEROKEE BASIN CBM
County: MONTGOMERY SEC. 29 TWP. 34S RGE 17E
State: KANSAS Date: 6-24-11

