



**GAMMA RAY  
NEUTRON  
COMPLETION LOG**

Company: TAILWATER, INC.  
Well: EAST HASTERT #38-E  
Field: GARNETT SHOESTRING  
County: ANDERSON  
State: KANSAS

Location: 742 FSL & 636 FEL  
SW NE SE SE  
SEC 13 TWP 20S RGE 20E  
Permament Datum: G.L.  
Log Measured From: G.L.  
Drilling Measured From: G.L.Elevation: 1080 FEET  
K.F. G.L. 1080 FEET

Date: 10-11-2011  
Run Number: 1 NW  
Depth Driller: 915  
Depth Logger: 902.6'

Top Log Interval: SURFACE  
Bottom Logged Interval: 902.6'  
Fluid Level: FULL

Type Fluid: WATER  
Production Casing: 2 7/8" @ 905'  
Max. Recorded Temp: @  
Estimated Cement Top: @  
Calculated Cement Top: @

Amount & Type Admix: EVANS ENERGY  
Drilling Contractor: 107  
Equipment Number: UDEN, D.  
Location: HUTCHINSON, D.

Recorded By: HUTCHINSON, D.  
Witnessed By:

Company: TAILWATER, INC.  
Well: EAST HASTERT #38-E  
Field: GARNETT SHOESTRING  
County: ANDERSON  
State: KANSAS

<<< Fold Here >>>

All interpretations based on inferences from electrical or other measurements and we cannot and do not guarantee the accuracy or correctness of any interpretation, and we shall not, except in the case of gross or willful negligence on our part, be liable or responsible for any loss, costs, damages, or expenses incurred or sustained by anyone resulting from any interpretation made by any of our officers, agents or employees. These interpretations are also subject to our general terms and conditions set out in our current Price Schedule.

**Comments**

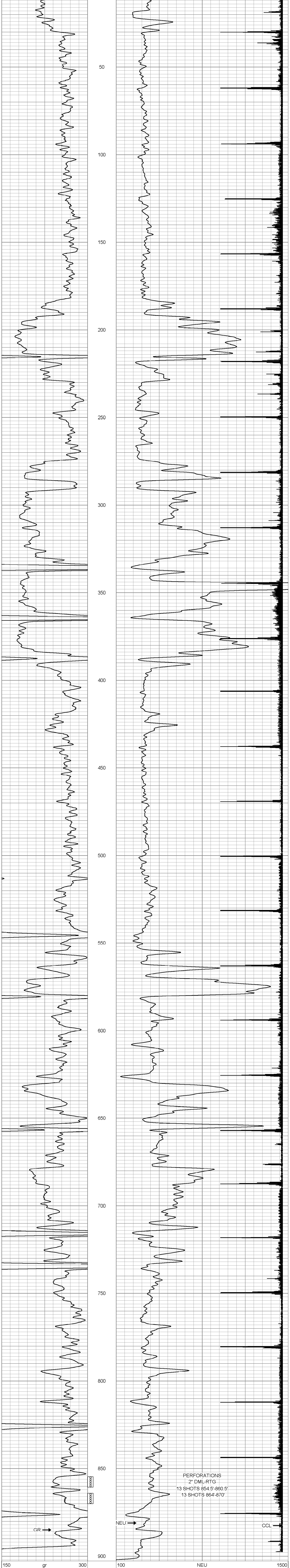
THANK YOU

Sensor	Offset (ft)	Schematic	Description	Len (ft)	OD (in)	Wt (lb)
GR	7.59		GR-TITAN_169 (TIT169_001) Titan 1 11/16" Gamma Ray	4.75	1.69	20.00
CCL	5.05		CCL-TITAN_169 (TIT169) Titan 1 11/16" Logging CCL	1.83	1.69	7.50
NEU	0.63		NEU-TITAN_169 (TIT169_001) Titan 1 11/16" Neutron	4.33	1.69	20.00

Dataset: east hastert #38-e.db: field/well/run1/pass1  
Total Length: 10.92 ft  
Total Weight: 47.50 lb  
O.D.: 1.69 in

Database File: g:\east hastert #38-e.db  
Dataset Pathname: pass1  
Presentation Format: gr-n-ccl  
Dataset Creation: Tue Oct 11 08:57:06 2011 by Log Std Casedhole 07122  
Charted by: Depth in Feet scaled 1:240

150	gr	300	100	NEU	1500
0	GR	150	13	CCL	-1



PERFORATIONS  
2" DML-RTG  
13 SHOTS 854.5'-860.5'  
13 SHOTS 864'-870'