



SUPERIOR
Hays,
Kansas

MICRO
LOG

Company MAI OIL OPERATIONS
Well HABERER A #3
Field
County RUSSELL
State KANSAS

Company MAI OIL OPERATIONS
Well HABERER A #3
Field
County RUSSELL State KANSAS

Location: API # : 15-167-23716-0000
1500' FSL & 2310' FEL
S/2 - SW - NW - SE
SEC 14 TWP 12S RGE 15W
Permanent Datum GROUND LEVEL Elevation 1630
Log Measured From KELLY BUSHING 8' A.G.L.
Drilling Measured From KELLY BUSHING
Other Services
CDL/CNL
DIL
Elevation
K.B. 1638
D.F. 1636
G.L. 1630

Date	7/24/11		
Run Number	TWO		
Depth Driller	3150		
Depth Logger	3150		
Bottom Logged Interval	3148		
Top Log Interval	2100		
Casing Driller	8 5/8" @ 700'		
Casing Logger	700		
Bit Size	7 7/8"		
Type Fluid in Hole	CHEMICAL MUD	CHLORIDES 4100 PPM	
Density / Viscosity	9.1/58		
pH / Fluid Loss	10.0/7.2		
Source of Sample	FLOWLINE		
Rm @ Meas. Temp	0.55 @ 88F		
Rmt @ Meas. Temp	0.41 @ 88F		
Rmc @ Meas. Temp	0.66 @ 88F		
Source of Rmf / Rmc	MEASUREMENT		
Rm @ BHT	0.45 @ 108F		
Time Circulation Stopped	2 HOURS		
Time Logger on Bottom			
Maximum Recorded Temperature	108F		
Equipment Number	4010		
Location	HAYS, KANSAS		
Recorded By	JEFF GRONWEG		
Witnessed By	STEVE MURPHY		

<<< Fold Here >>>

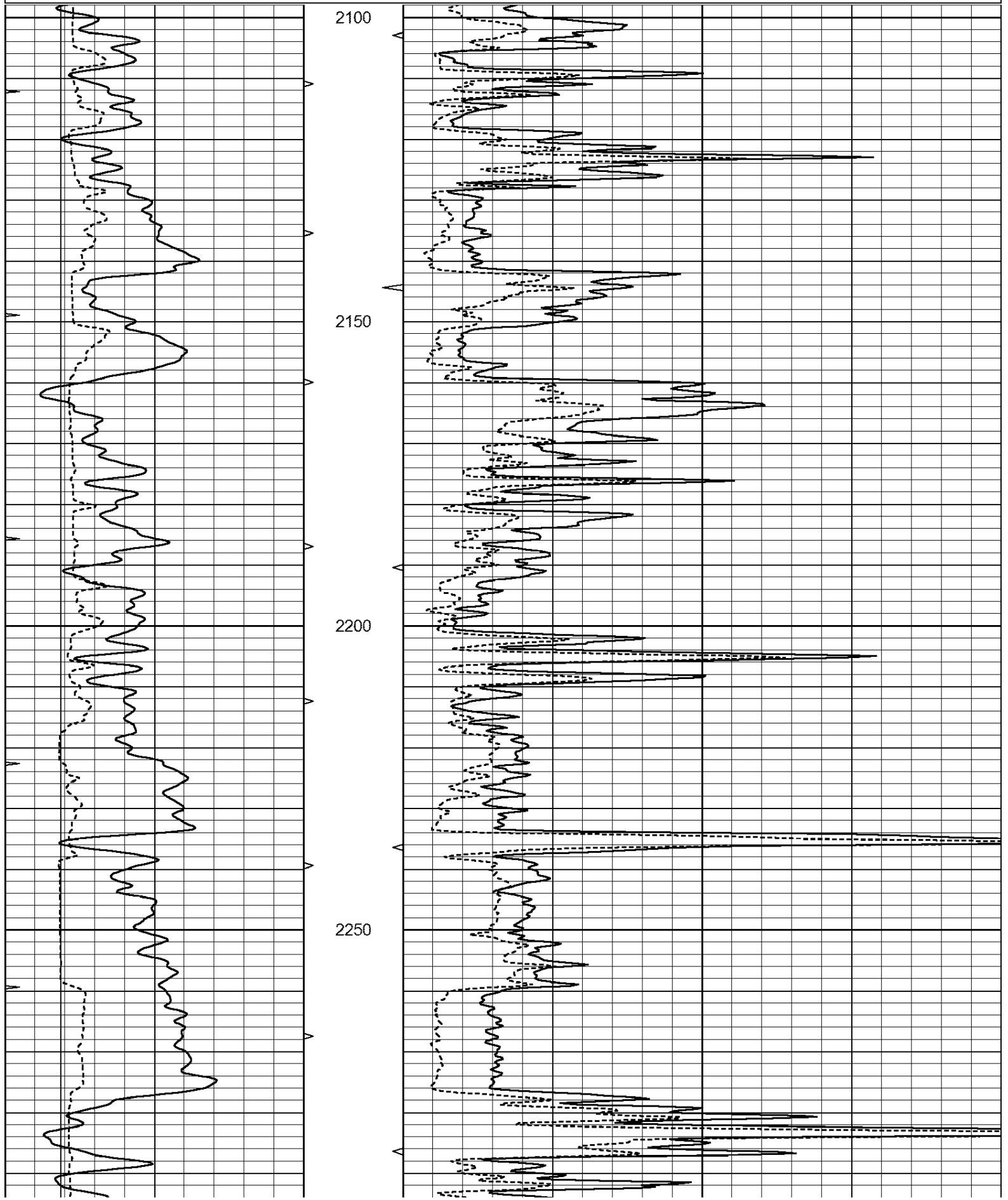
All interpretations are opinions based on inferences from electrical or other measurements and we cannot and do not guarantee the accuracy or correctness of any interpretation, and we shall not, except in the case of gross or willful negligence on our part, be liable or responsible for any loss, costs, damages, or expenses incurred or sustained by anyone resulting from any interpretation made by any of our officers, agents or employees. These interpretations are also subject to our general terms and conditions set out in our current Price Schedule.

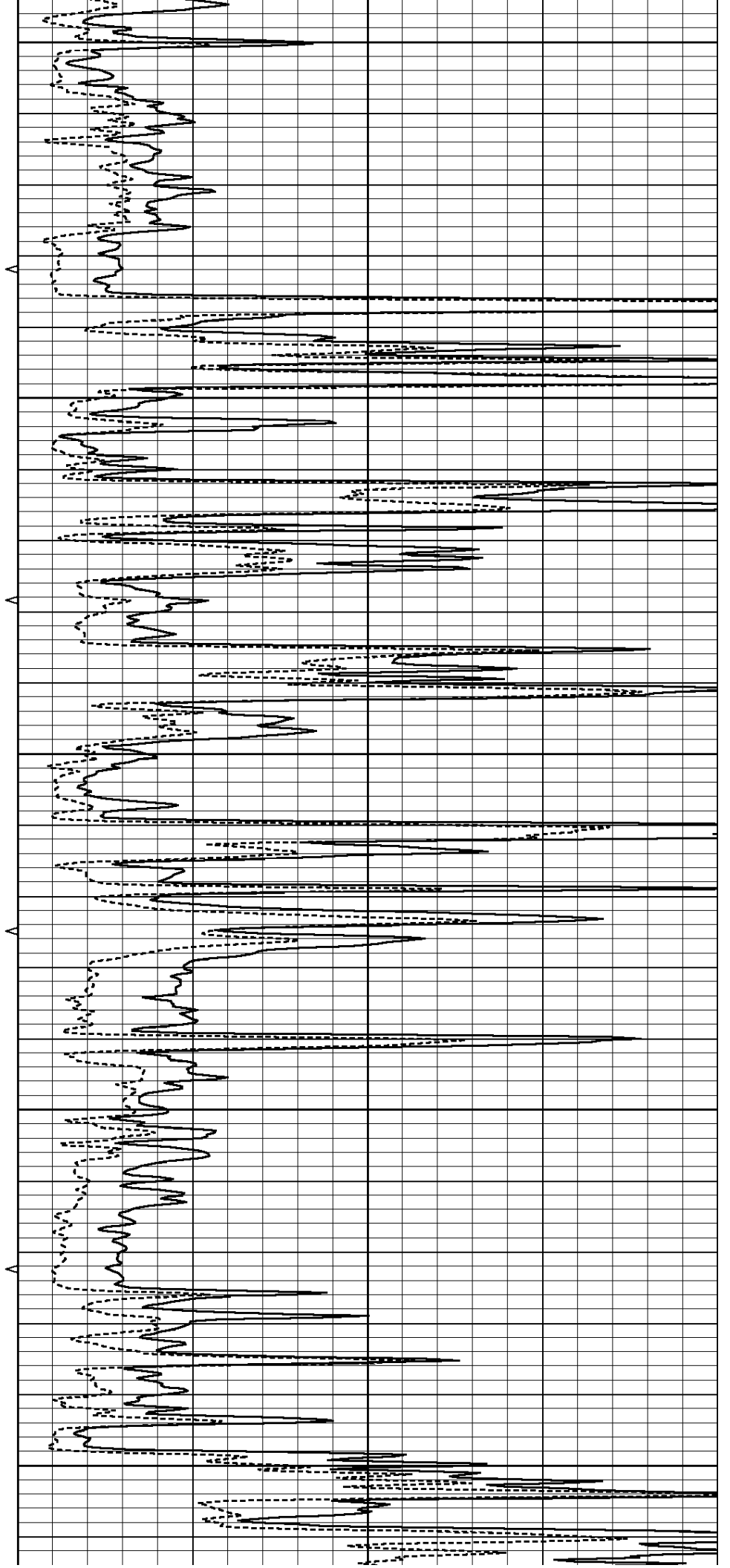
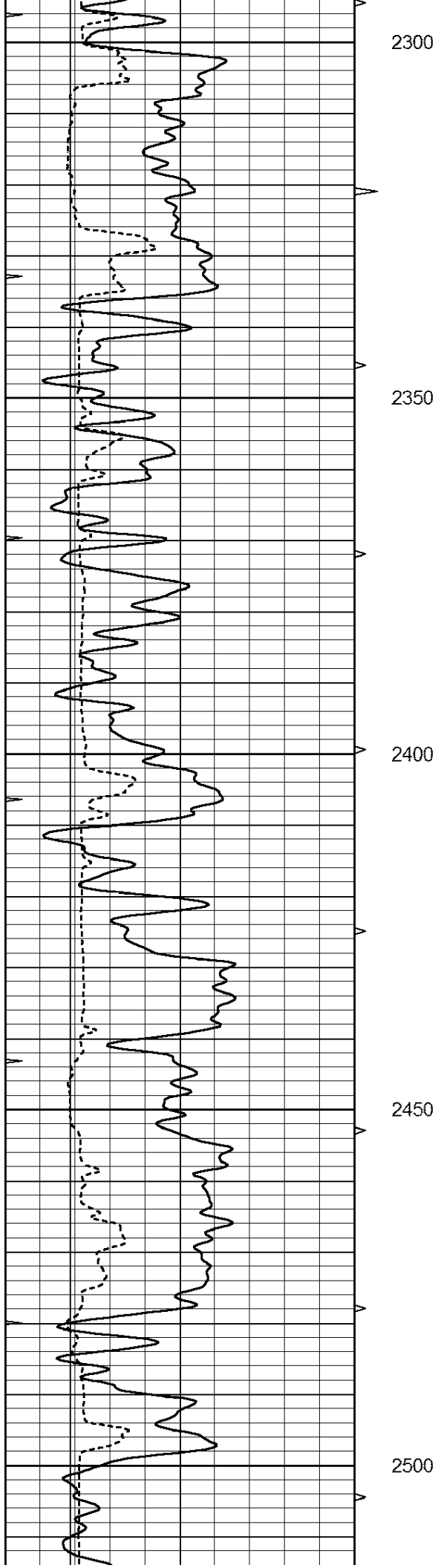
Comments

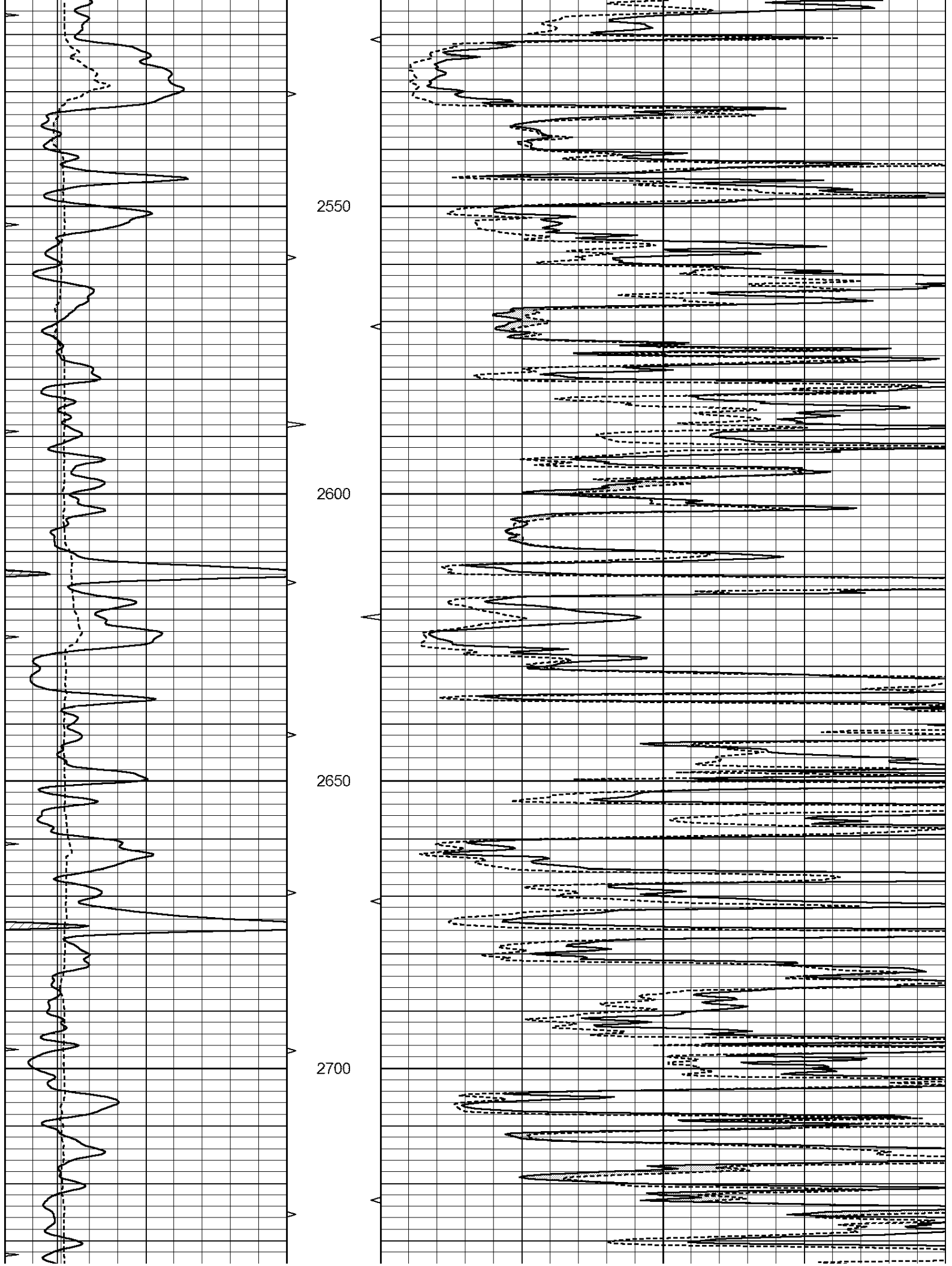
THANK YOU FOR USING SUPERIOR WELL SERVICE HAYS, KANSAS (785) 628-6395
DIRECTIONS
GORHAM, KS - 1 MILE EAST - 10 MILES NORTH TO CANYON RD - 3 MILES EAST
1/4 MILE NORTH - WEST INTO

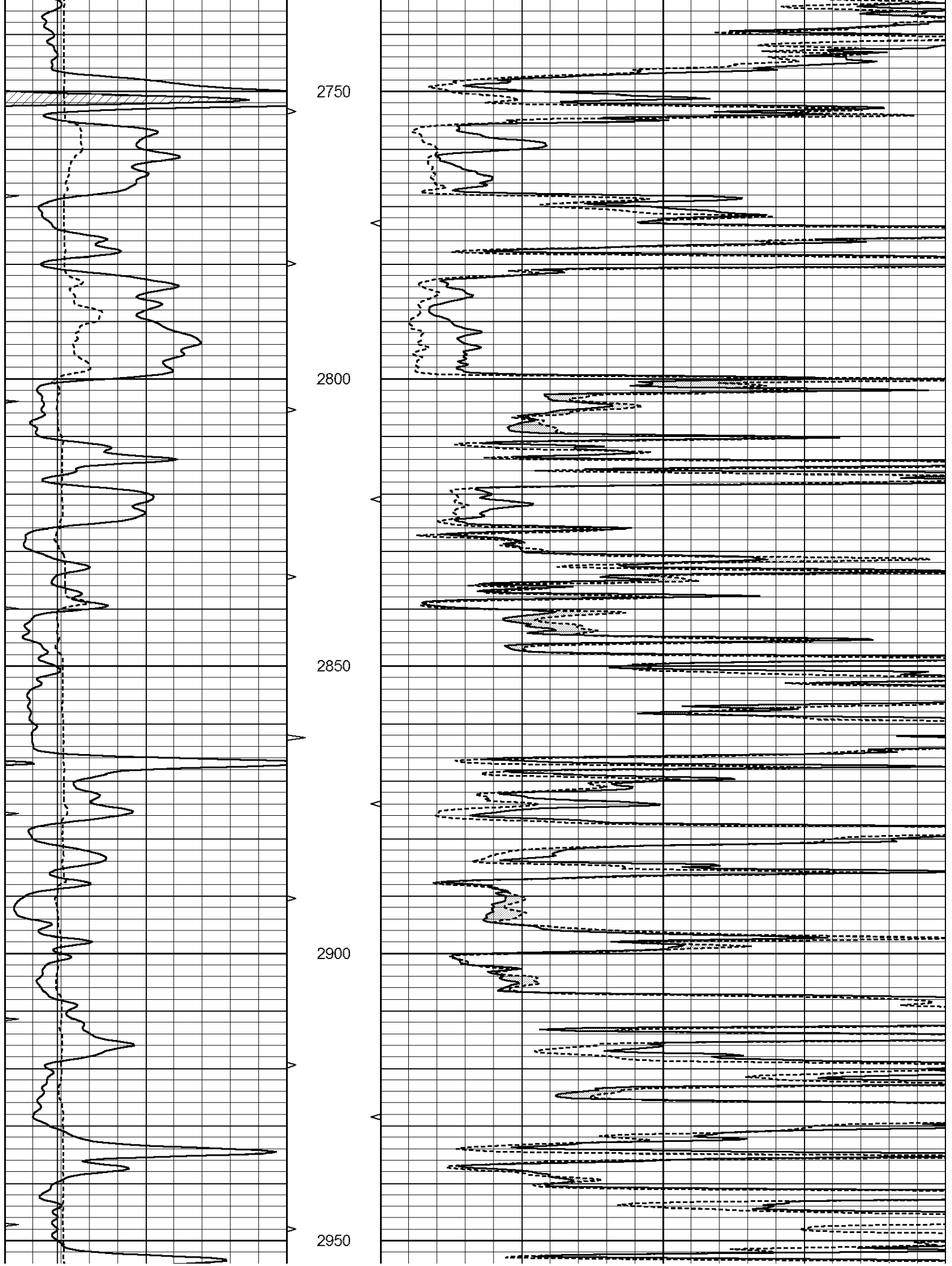
Database File: 007096ddn.db
Dataset Pathname: pass8.2
Presentation Format: micro
Dataset Creation: Tue Jul 26 03:54:26 2011 by Calc Open-Cased 110302
Charted by: Depth in Feet scaled 1:240

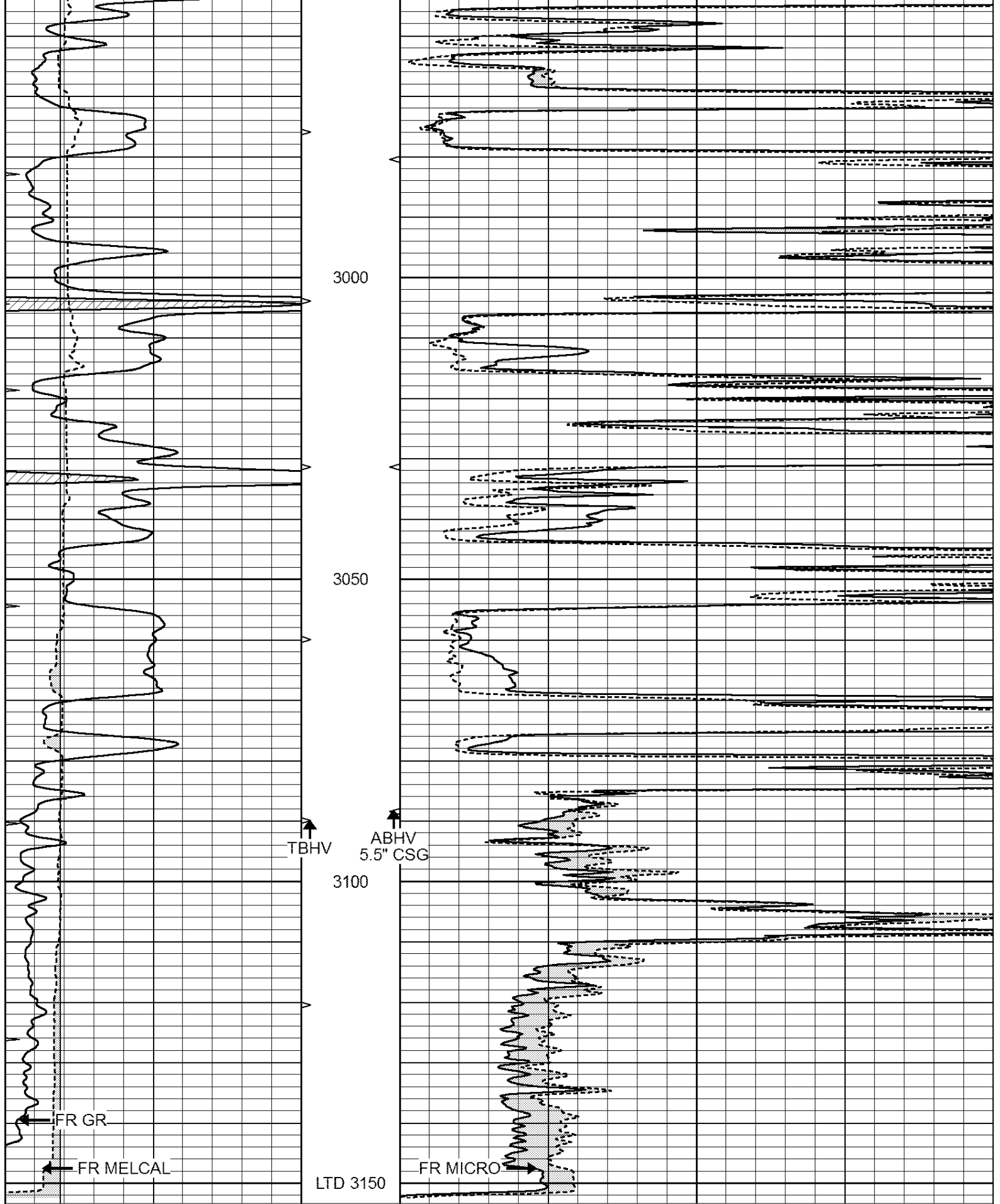
0	GAMMA RAY (GAPI)	150	ABHV	0	MEL1.5 (Ohm-m)	40
6	CALIPER (in)	16	10 (ft3)	0	MEL2.0 (Ohm-m)	40
0	MINMK	20	TBHV			
			0 (ft3)	10		











0	GAMMA RAY (GAPI)	150	ABHV	0	MEL1.5 (Ohm-m)	40
6	CALIPER (in)	16	10 (ft3)	0	MEL2.0 (Ohm-m)	40
0	MINMK	20	TBHV			
			0 (ft3)	10		

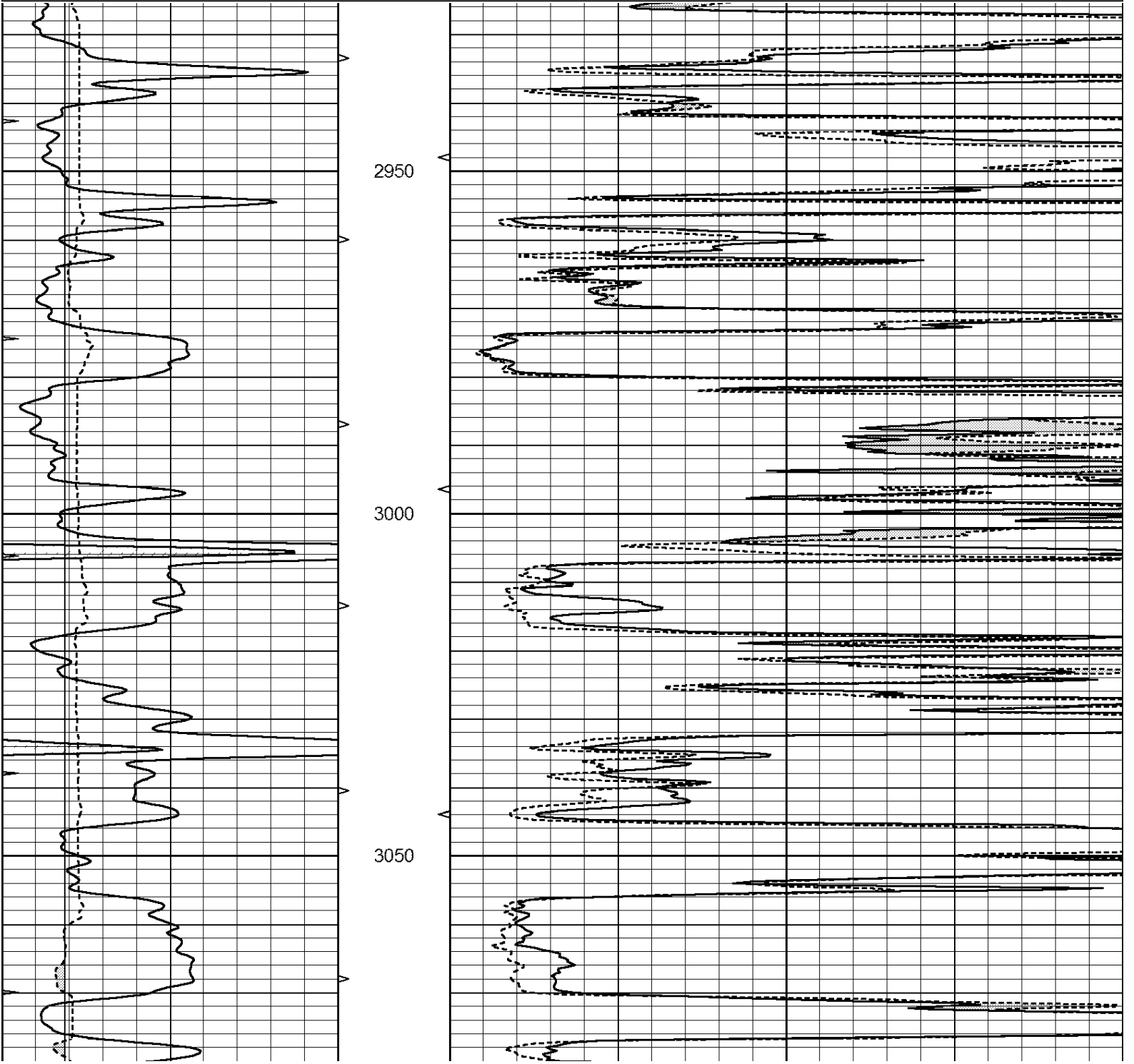


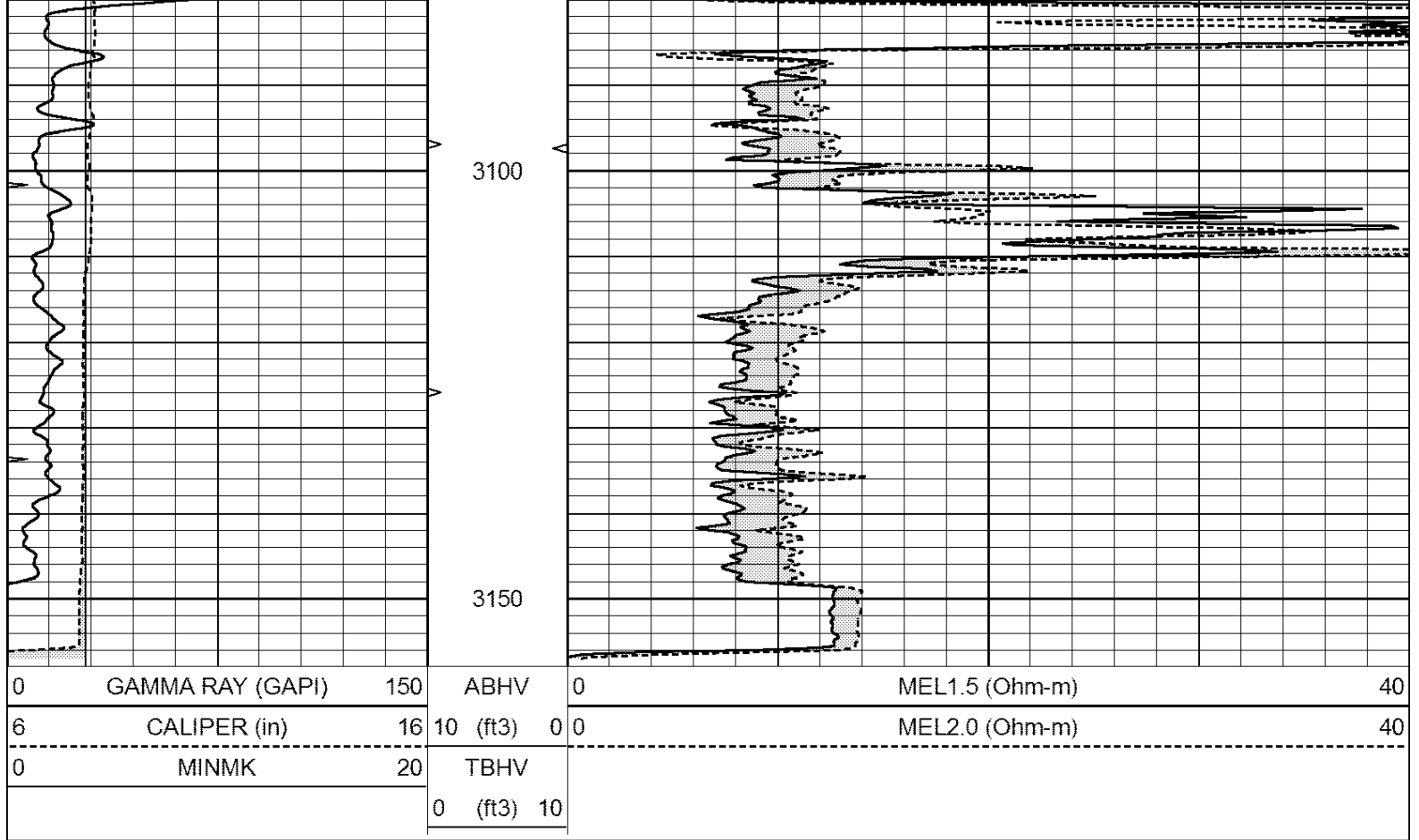
SUPERIOR
Hays,
Kansas

REPEAT SECTION

Database File: 007096ddn.db
 Dataset Pathname: pass7.3
 Presentation Format: micro
 Dataset Creation: Tue Jul 26 03:57:45 2011 by Calc Open-Cased 110302
 Charted by: Depth in Feet scaled 1:240

0	GAMMA RAY (GAPI)	150	ABHV	0	MEL1.5 (Ohm-m)	40
6	CALIPER (in)	16	10 (ft3)	0 0	MEL2.0 (Ohm-m)	40
0	MINMK	20	TBHV			
			0 (ft3)	10		





Calibration Report

Database File: 007096ddn.db
 Dataset Pathname: pass8.2
 Dataset Creation: Tue Jul 26 03:54:26 2011 by Calc Open-Cased 110302

MICRO Calibration Report

Serial Number:	2	
Tool Model:	PROBE	
Performed:	Sun Jul 17 09:05:49 2011	
Caliper Calibration:	Gain=3.519	Offset=3.822
	Low Cal	High Cal
References	8.000	14.000
Readings	1.130	2.835
1.5" Calibration:	Gain=40.000	Offset=0.000
	Low Cal	High Cal
References	0.000	20.000
Readings	0.065	1.210
2" Calibration:	Gain=48.000	Offset=0.500
	Low Cal	High Cal
References	0.000	20.000
Readings	0.012	1.043

Gamma Ray Calibration Report

Serial Number:	GR3	
Tool Model:	OPEN	
Performed:	Wed Jul 20 11:59:38 2011	
Calibrator Value:	200.0	GAPI

Background Reading:

3.0

cps

Calibrator Reading:

186.0

cps

Sensitivity:

0.8000

GAPI/cps