



**SUPERIOR  
Hays,  
Kansas**

**MICRO  
LOG**

**Company** AMERICAN ENERGIES CORPORATION  
**Well** TIEN #1-10  
**Field** WILDCAT  
**County** NORTON **State** KANSAS

**Company** AMERICAN ENERGIES CORP.  
**Well** TIEN #1-10  
**Field** WILDCAT  
**County** NORTON  
**State** KANSAS

**Location:** API #: 15-137-20583  
 1490' FSL & 330' FEL  
 SEC 10 TWP 4S RGE 23W  
 Permanent Datum GROUND LEVEL Elevation 2337  
 Log Measured From KELLY BUSHING 5' A.G.L.  
 Drilling Measured From KELLY BUSHING  
 Other Services  
 CDL/CNL  
 DIL/SONIC  
 Elevation  
 K.B. 2342  
 D.F.  
 G.L. 2337

Date	9-14-11
Run Number	TWO
Depth Driller	3738
Depth Logger	3738
Bottom Logged Interval	3720
Top Log Interval	3100
Casing Driller	303
Casing Logger	303
Bit Size	7.875
Type Fluid in Hole	CHEMICAL MUD
Density / Viscosity	9.1 / 69
pH / Fluid Loss	11.5 / 6.4
Source of Sample	FLOWLINE
Rim @ Meas. Temp	1.10 @ 82F
Rmf @ Meas. Temp	0.83 @ 82F
Rmc @ Meas. Temp	1.32 @ 82F
Source of Rmf / Rmc	MEASURED
Rim @ BHT	.810 @ 112F
Time Circulation Stopped	2 HOURS
Time Logger on Bottom	9:15 A.M.
Maximum Recorded Temperature	112F
Equipment Number	860
Location	HAYS, KS.
Recorded By	RUPP
Witnessed By	DAVE GOLDAK

<<< Fold Here >>>

All interpretations are opinions based on inferences from electrical or other measurements and we cannot and do not guarantee the accuracy or correctness of any interpretation, and we shall not, except in the case of gross or willful negligence on our part, be liable or responsible for any loss, costs, damages, or expenses incurred or sustained by anyone resulting from any interpretation made by any of our officers, agents or employees. These interpretations are also subject to our general terms and conditions set out in our current Price Schedule.

Comments

**SUPERIOR WELL SERVICES**  
 785-628-6395  
**THANK YOU FOR YOUR BUSINESS**  
 DIRECTIONS: HILL CITY, N TO HIGHWAY #9 & #283 JCT., 6 1/2N, W INTO,



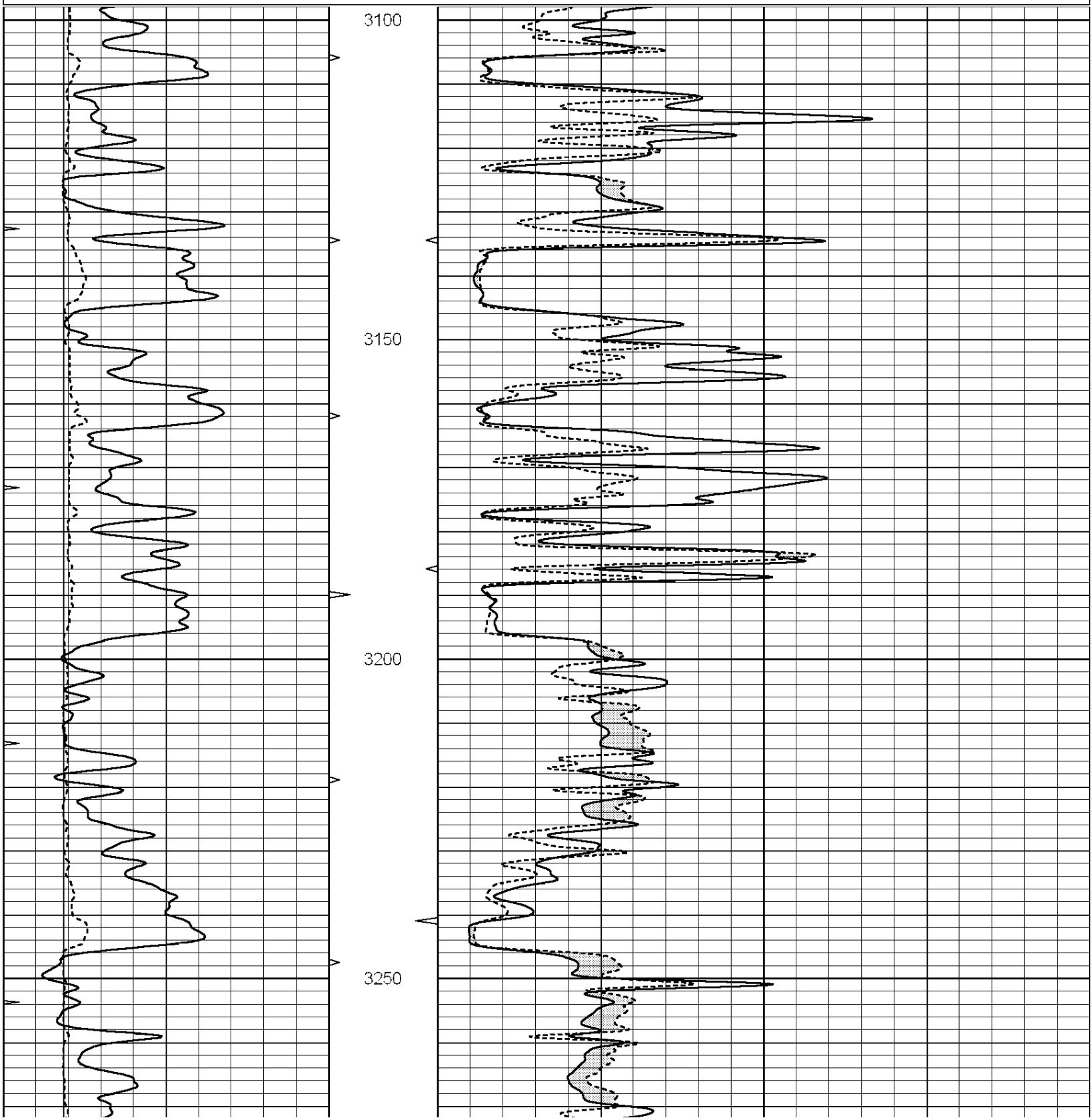
**SUPERIOR  
Hays,  
Kansas**

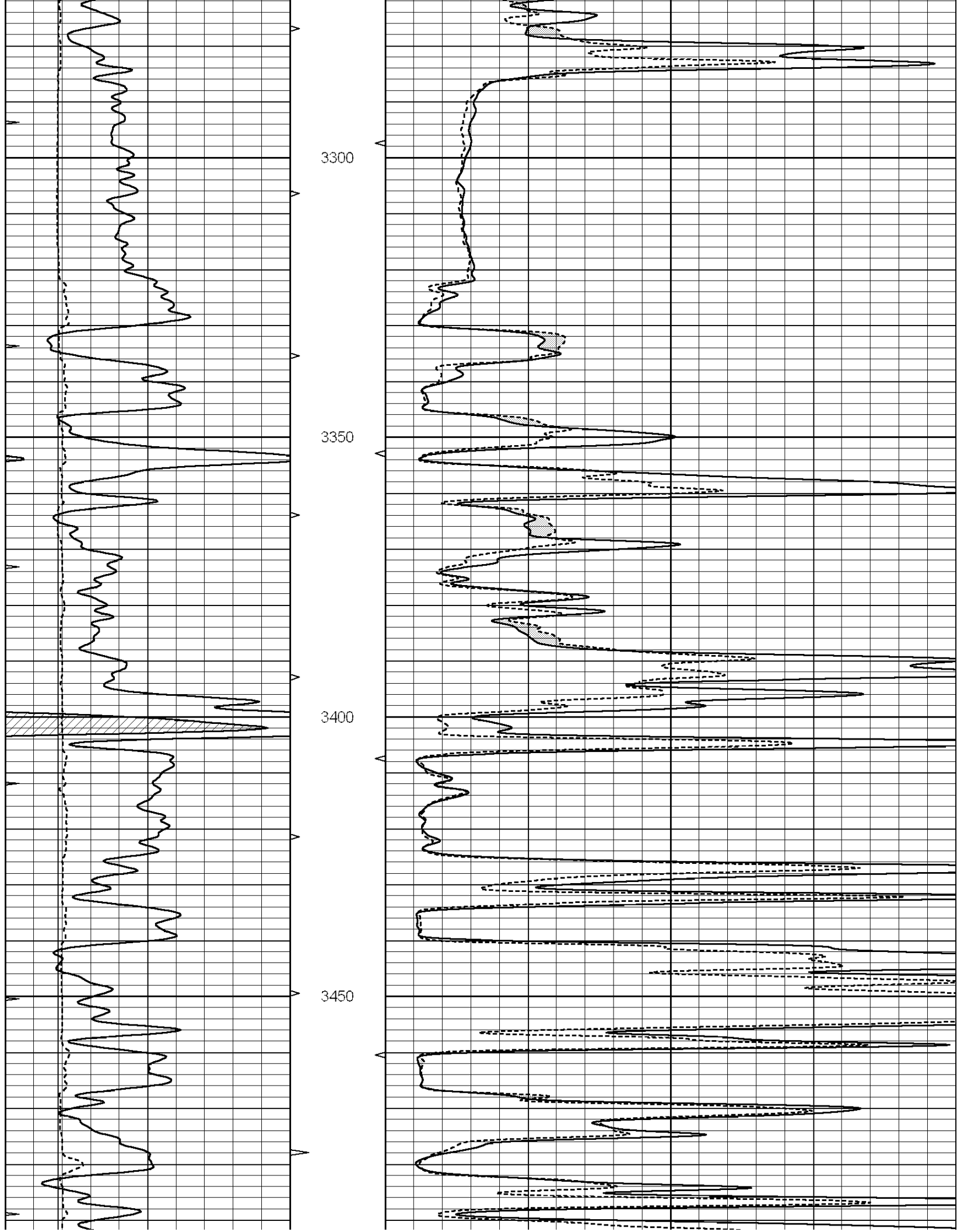
**MAIN SECTION**

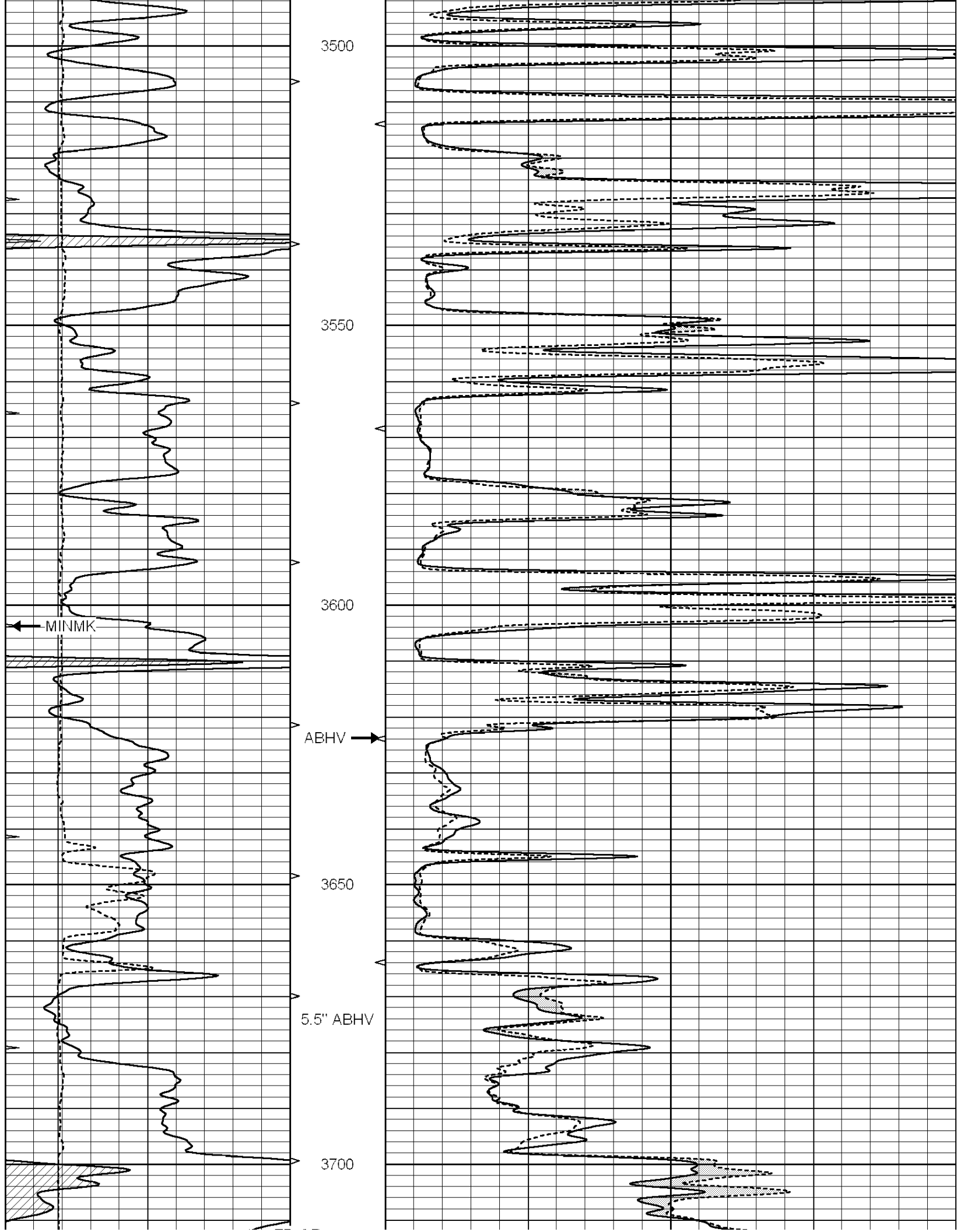
Database File: 007751ddn.db  
 Dataset Pathname: pass5  
 Presentation Format: micro  
 Dataset Creation: Wed Sep 14 11:06:57 2011 by Log Open-Cased 090629  
 Charted by: Depth in Feet scaled 1:240

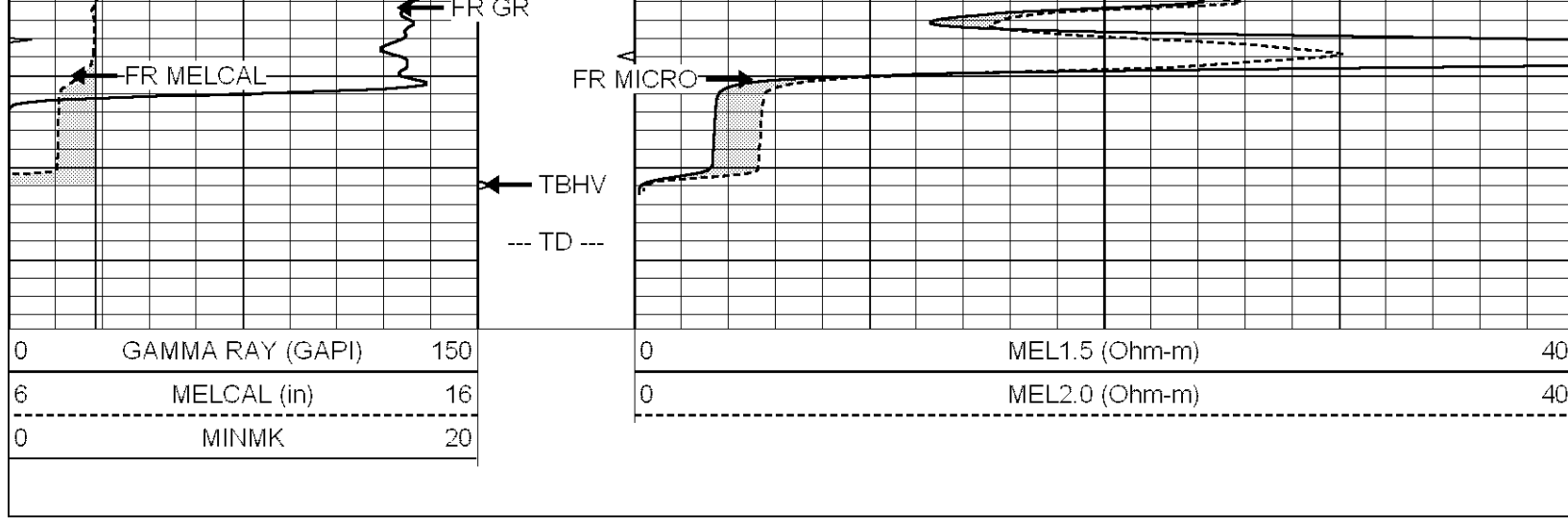
0	GAMMA RAY (GAPI)	150
6	MELCAL (in)	16
0	MINMK	20

0	MEL1.5 (Ohm-m)	40
0	MEL2.0 (Ohm-m)	40





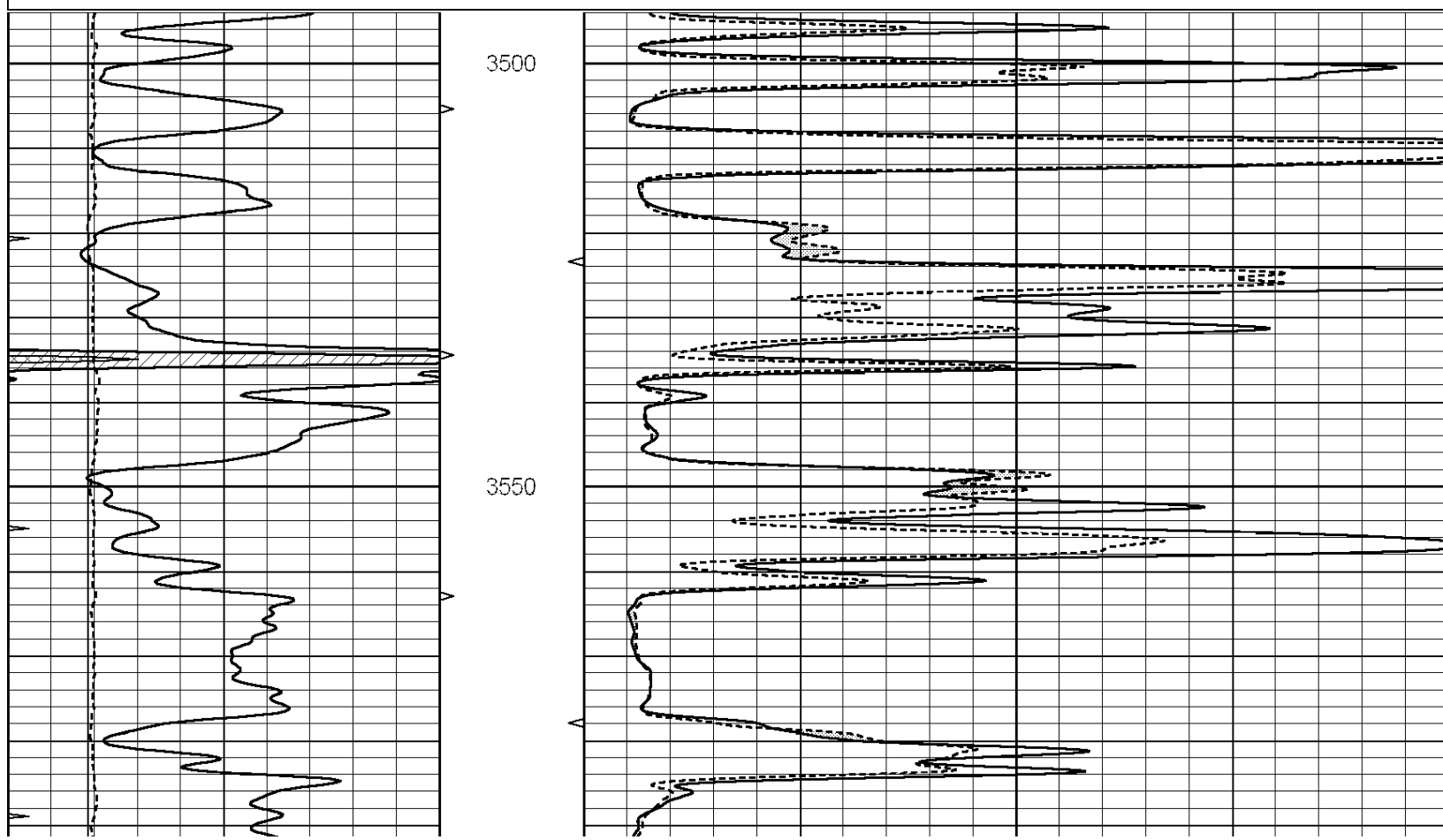
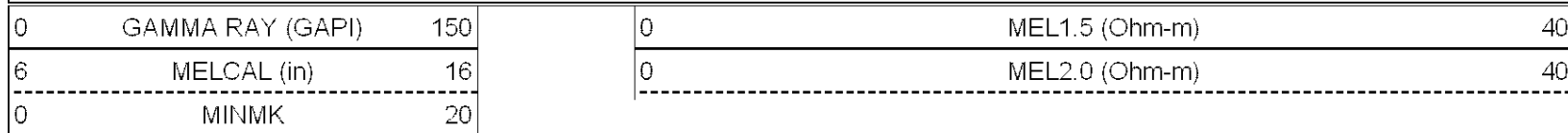


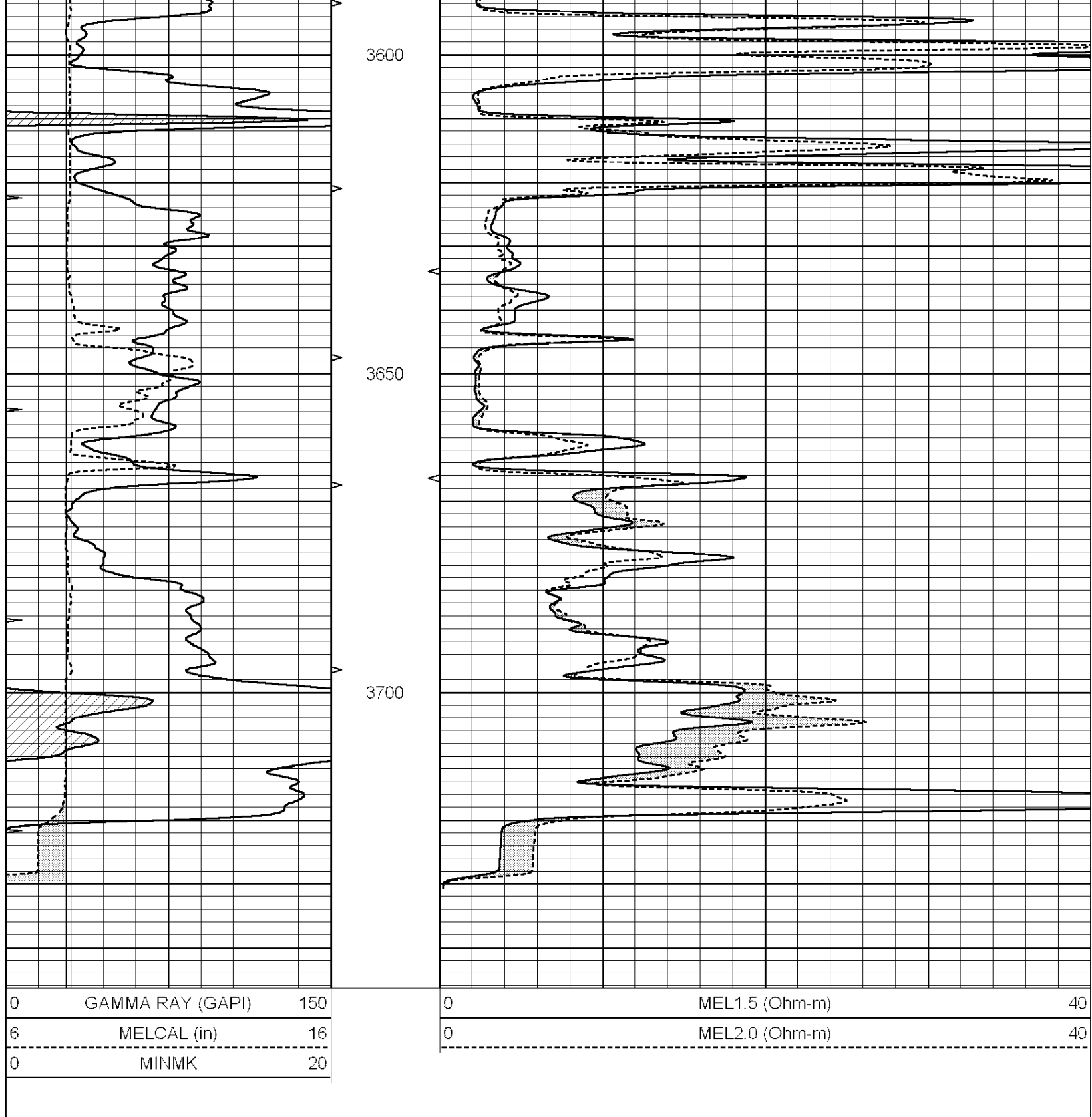


SUPERIOR  
Hays,  
Kansas

# REPEAT SECTION

Database File: 007751ddn.db  
 Dataset Pathname: pass4  
 Presentation Format: micro  
 Dataset Creation: Wed Sep 14 10:55:32 2011 by Log Open-Cased 090629  
 Charted by: Depth in Feet scaled 1:240





### Calibration Report

Database File: 007751ddn.db  
 Dataset Pathname: pass5.1  
 Dataset Creation: Wed Sep 14 12:12:38 2011

### MICRO Calibration Report

Serial Number: Micro1  
 Tool Model: ProbeL  
 Performed: Sun Sep 11 13:54:28 2011

Caliper Calibration: Gain=1.715      Offset=2.155

References	Low Cal	High Cal
Readings	7.700	11.000
	3.233	5.157

1.5" Calibration: Gain=40.000 Offset=0.200

References	Low Cal	High Cal
Readings	0.000	20.000
	0.003	0.844

2" Calibration: Gain=30.000 Offset=0.400

References	Low Cal	High Cal
Readings	0.000	20.000
	0.028	0.817

### Gamma Ray Calibration Report

Serial Number: GR5  
Tool Model: OPEN  
Performed: Wed Sep 14 09:21:01 2011

Calibrator Value: 1.0 GAPI

Background Reading: 0.0 cps  
Calibrator Reading: 1.0 cps

Sensitivity: 0.6500 GAPI/cps