



**SUPERIOR
Hays,
Kansas**

**SONIC
LOG**

Company **AMERICAN ENERGIES CORPORATION**
Well **TIEN #1-10**
Field **WILDCAT**
County **NORTON** State **KANSAS**

Company **AMERICAN ENERGIES CORP.**
Well **TIEN #1-10**
Field **WILDCAT**
County **NORTON**
State **KANSAS**

Location: **API # : 15-137-20583**
1490' FSL & 330' FEL
SEC 10 TWP 4S RGE 23W
Permanent Datum **GROUND LEVEL** Elevation **2337**
Log Measured From **KELLY BUSHING 5' A.G.L.**
Drilling Measured From **KELLY BUSHING**
Other Services
CDL/CNL
DIL/MEL
Elevation
K.B. 2342
D.F.
G.L. 2337

Date	9-14-11
Run Number	TWO
Depth Driller	3738
Depth Logger	3738
Bottom Logged Interval	3731
Top Log Interval	300
Casing Driller	303
Casing Logger	303
Bit Size	7.875
Type Fluid in Hole	CHEMICAL MUD
Density / Viscosity	9.1 / 69
pH / Fluid Loss	11.5 / 6.4
Source of Sample	FLOWLINE
Rim @ Meas. Temp	1.10 @ 82F
Rmf @ Meas. Temp	0.83 @ 82F
Rmc @ Meas. Temp	1.32 @ 82F
Source of Rmf / Rmc	MEASURED
Rim @ BHT	.810 @ 112F
Time Circulation Stopped	2 HOURS
Time Logger on Bottom	9:15 A.M.
Maximum Recorded Temperature	112F
Equipment Number	860
Location	HAYS, KS.
Recorded By	RUPP
Witnessed By	DAVE GOLDAK

<<< Fold Here >>>

All interpretations are opinions based on inferences from electrical or other measurements and we cannot and do not guarantee the accuracy or correctness of any interpretation, and we shall not, except in the case of gross or willful negligence on our part, be liable or responsible for any loss, costs, damages, or expenses incurred or sustained by anyone resulting from any interpretation made by any of our officers, agents or employees. These interpretations are also subject to our general terms and conditions set out in our current Price Schedule.

Comments

SUPERIOR WELL SERVICES
785-628-6395
THANK YOU FOR YOUR BUSINESS
DIRECTIONS: HILL CITY, N TO HIGHWAY #9 & #283 JCT., 6 1/2N, W INTO,

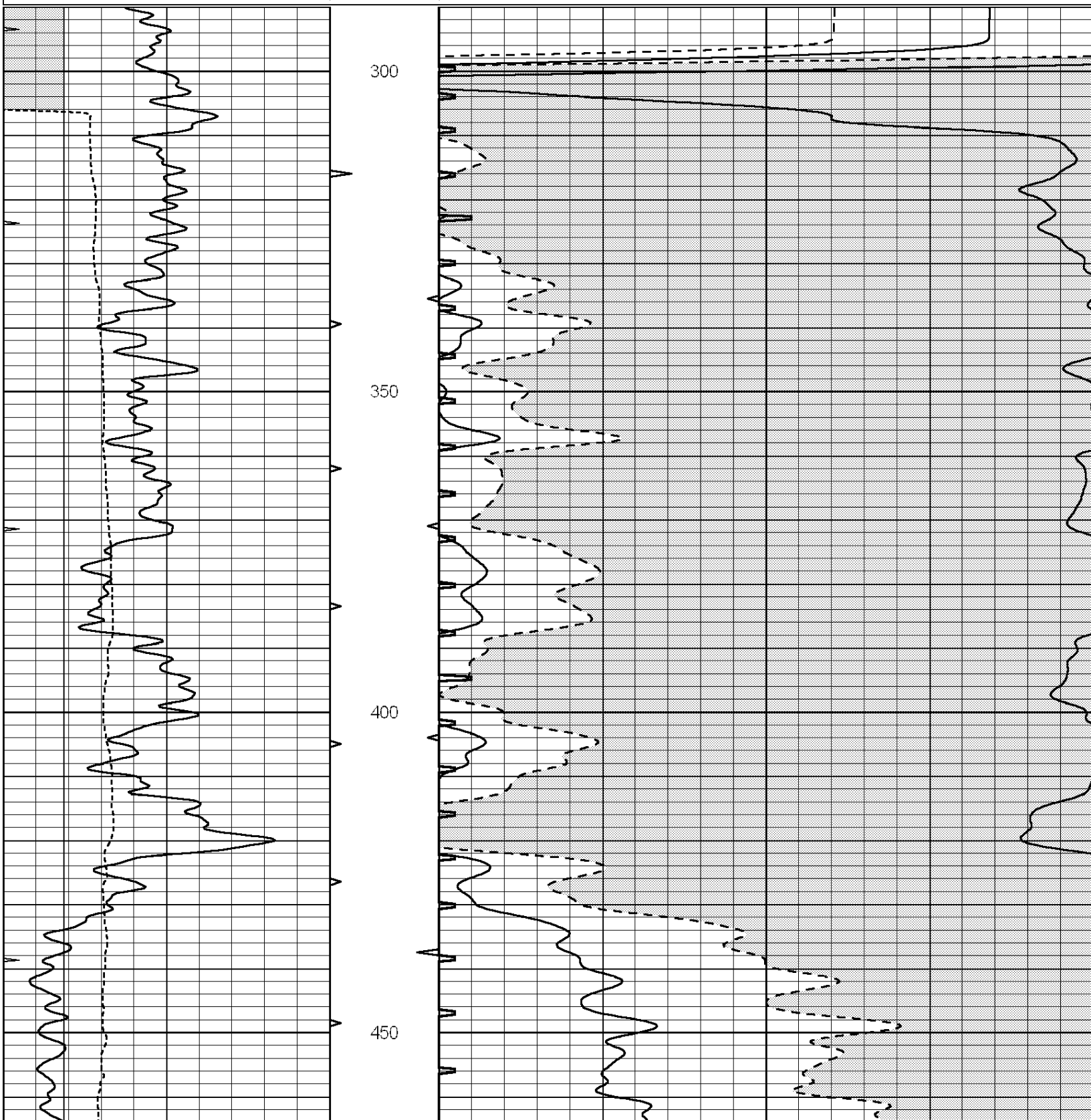


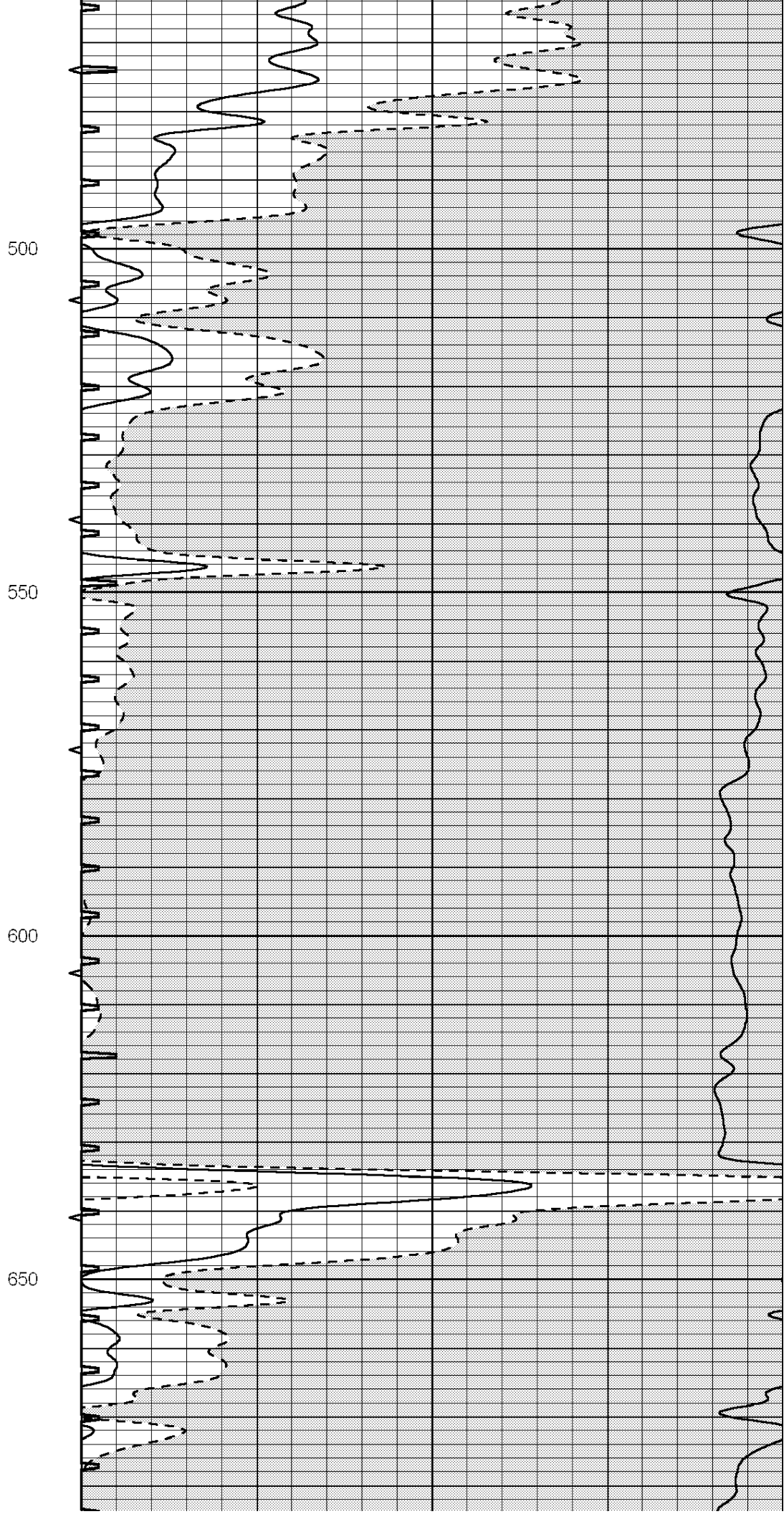
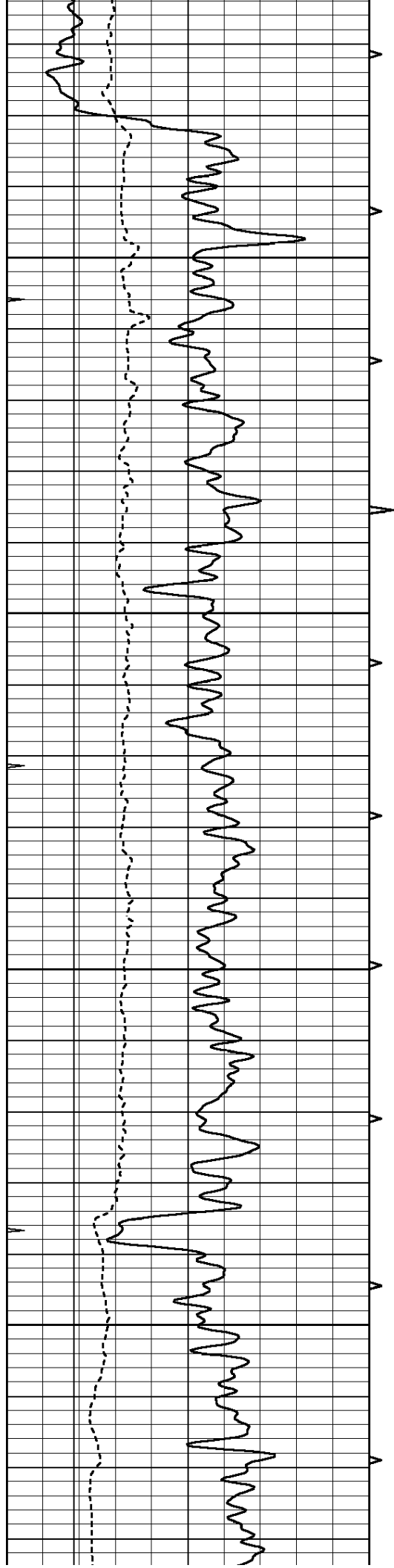
**SUPERIOR
Hays,
Kansas**

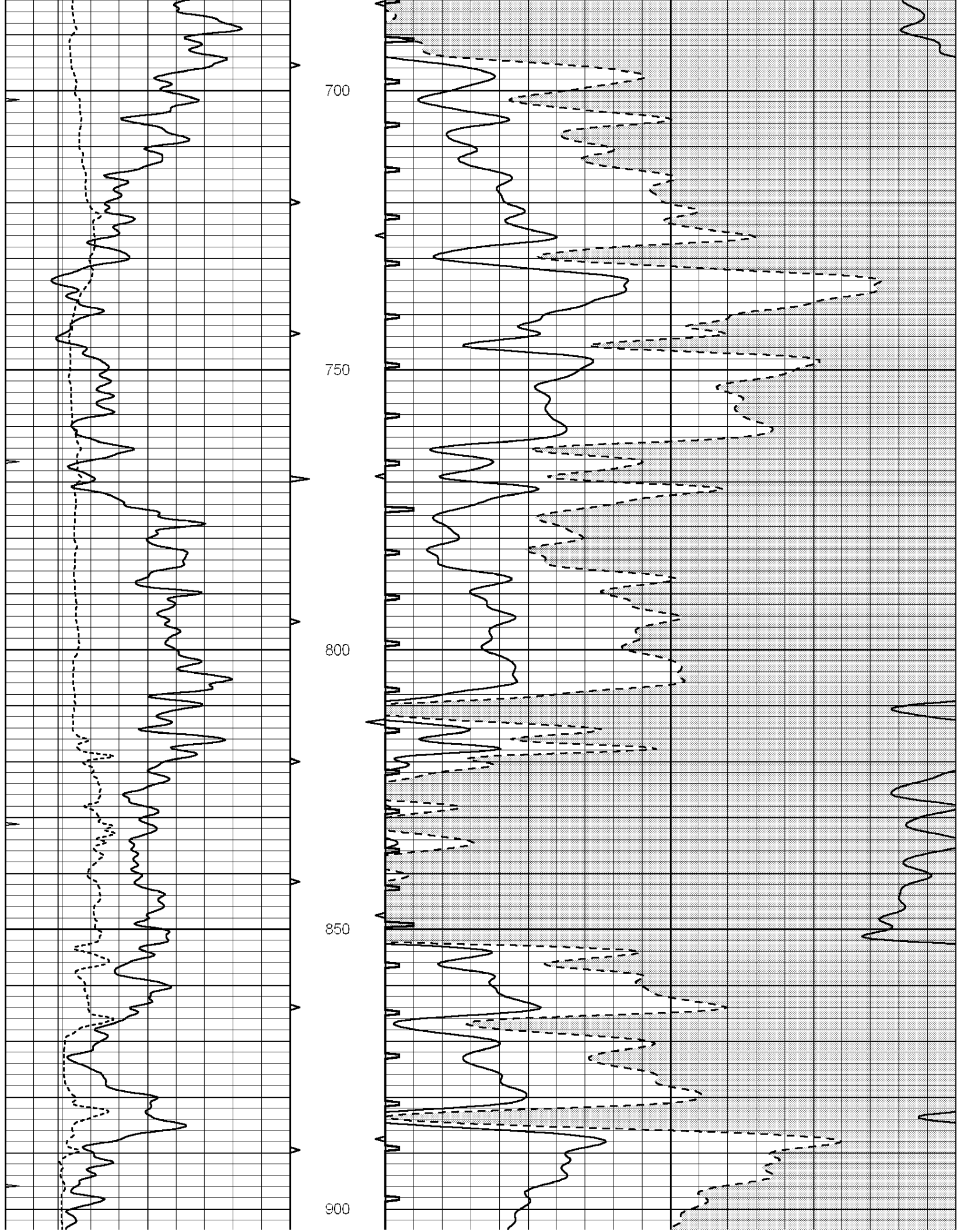
MAIN SECTION

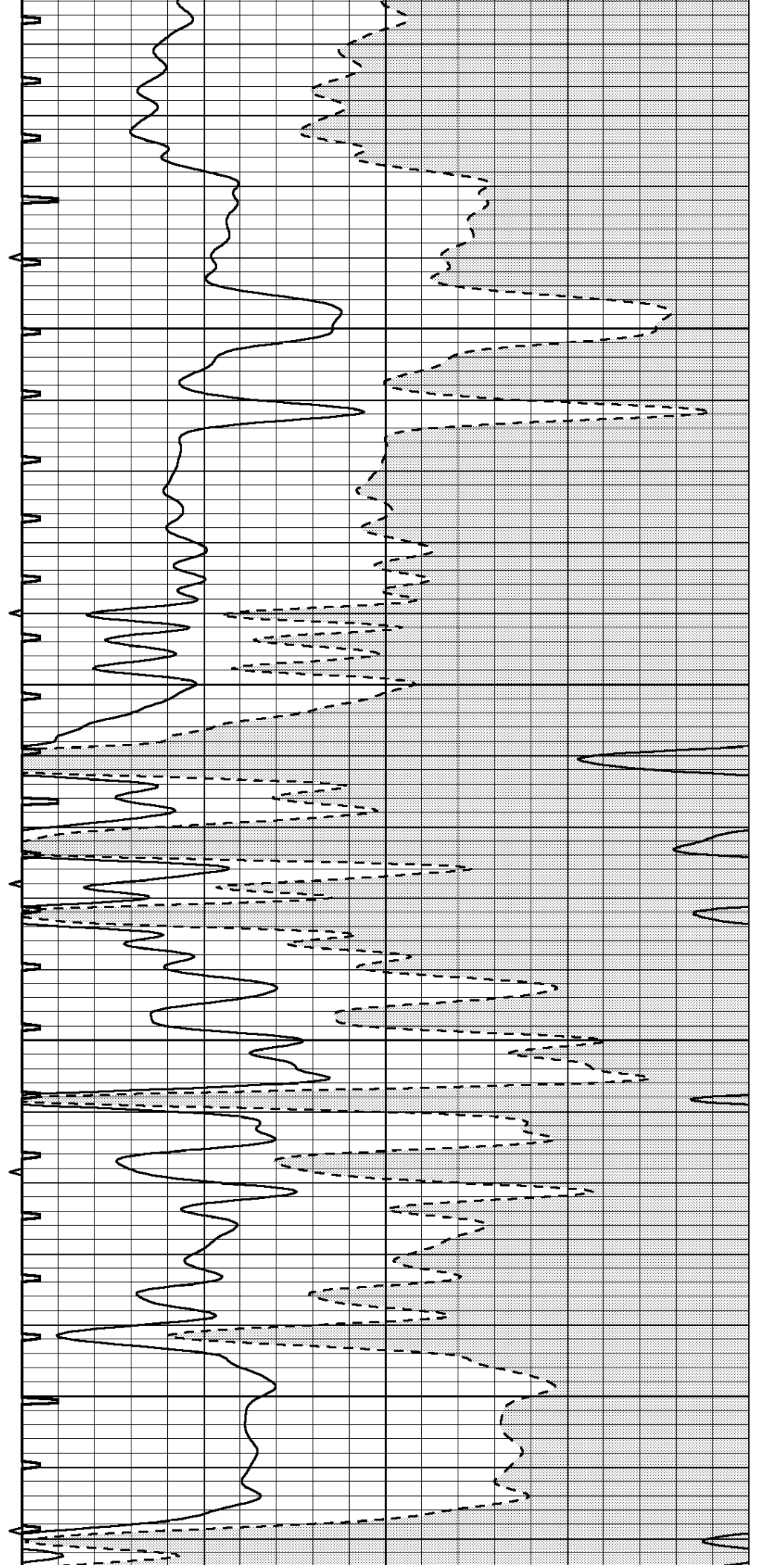
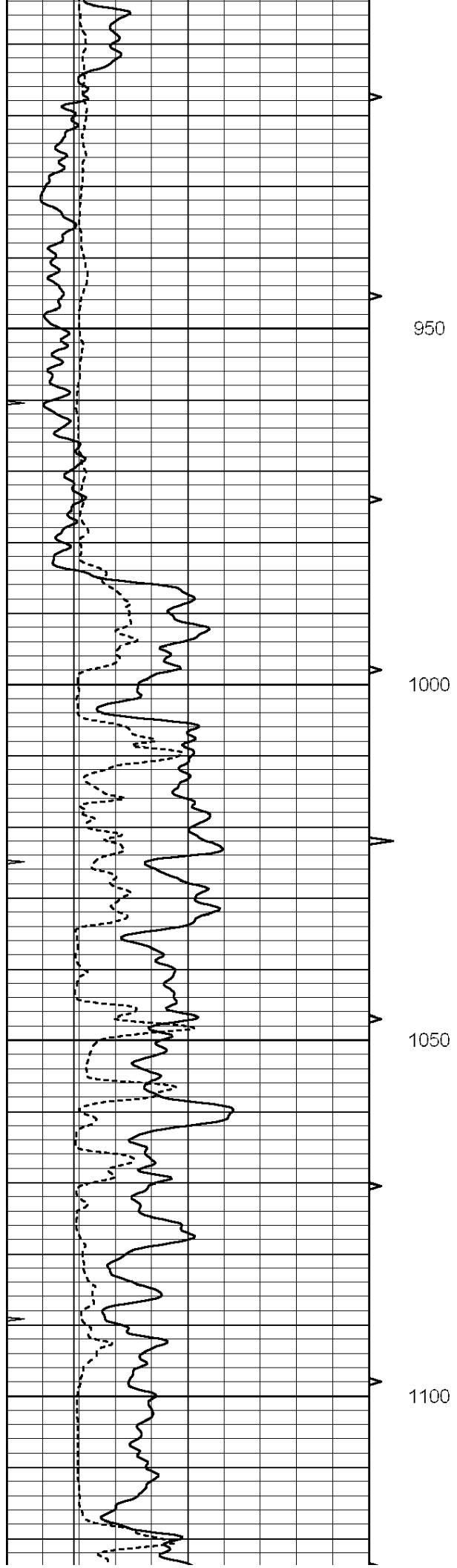
Database File: 007751ddn.db
 Dataset Pathname: pass5
 Presentation Format: slt
 Dataset Creation: Wed Sep 14 11:06:57 2011 by Log Open-Cased 090629
 Charted by: Depth in Feet scaled 1:240

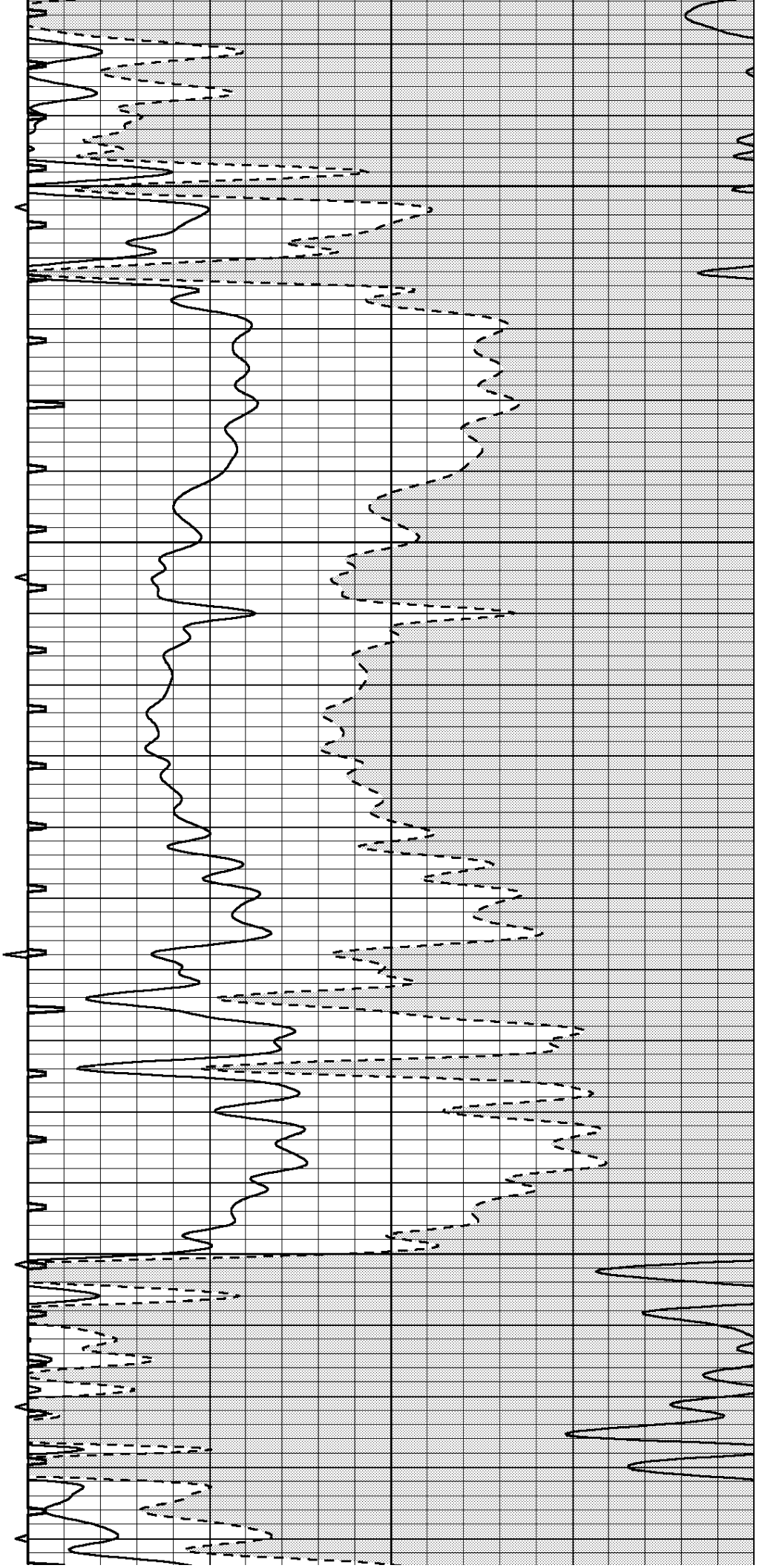
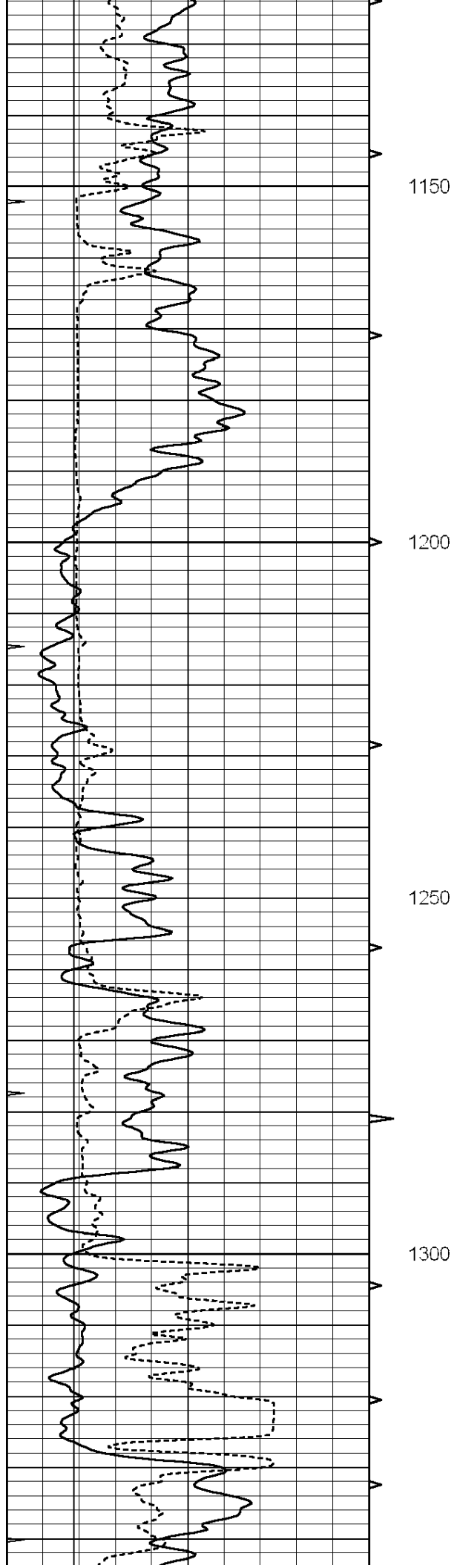
0	GAMMA RAY (GAPI)	150	ABHV	140	DELTA TIME (usec/ft)	40
6	MELCAL (in)	16	10 (ft3)	0	SONIC POROSITY (pu)	-10
0	MINMK	20	TBHV	0	ITT (msec)	20
			0 (ft3)	10		

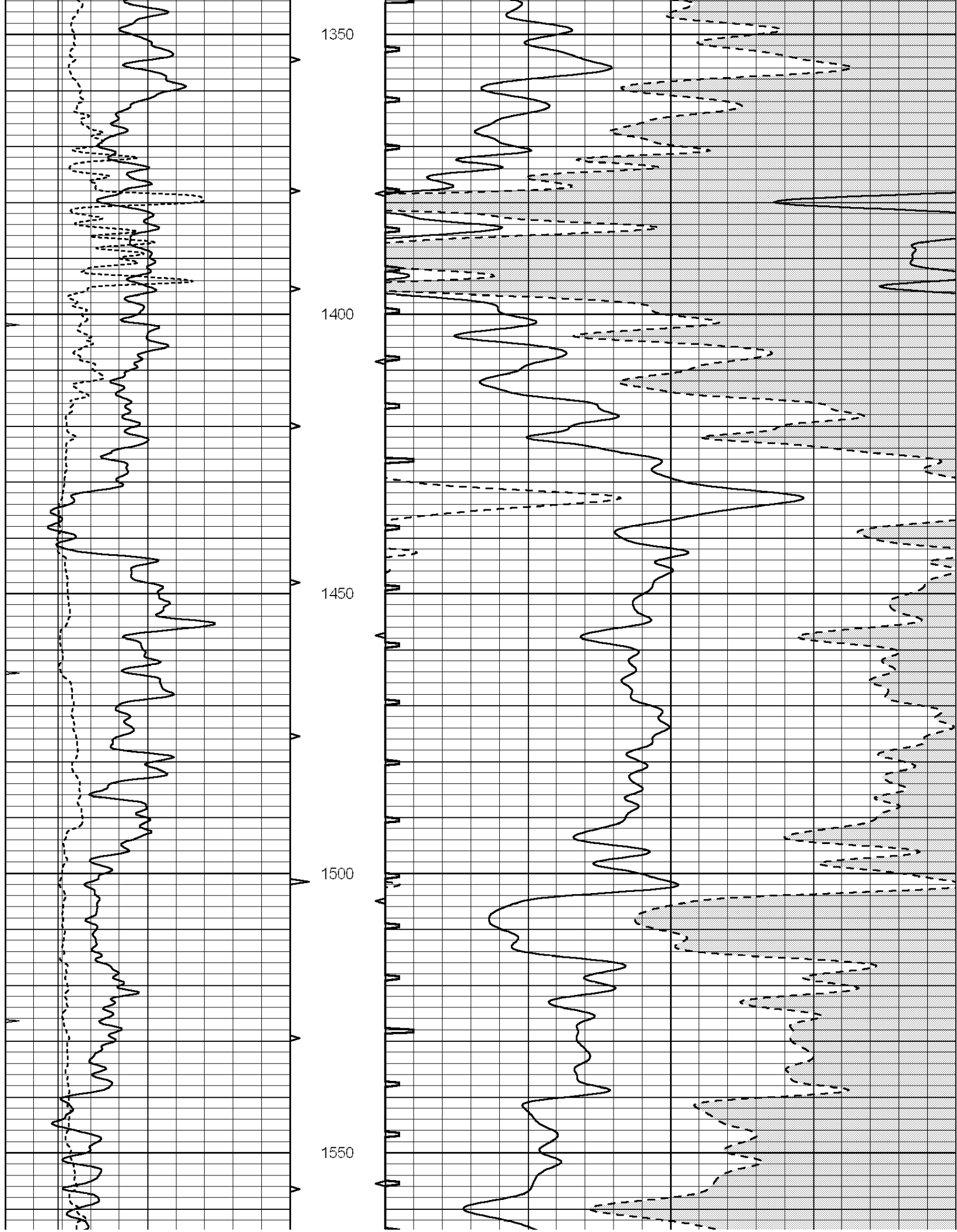


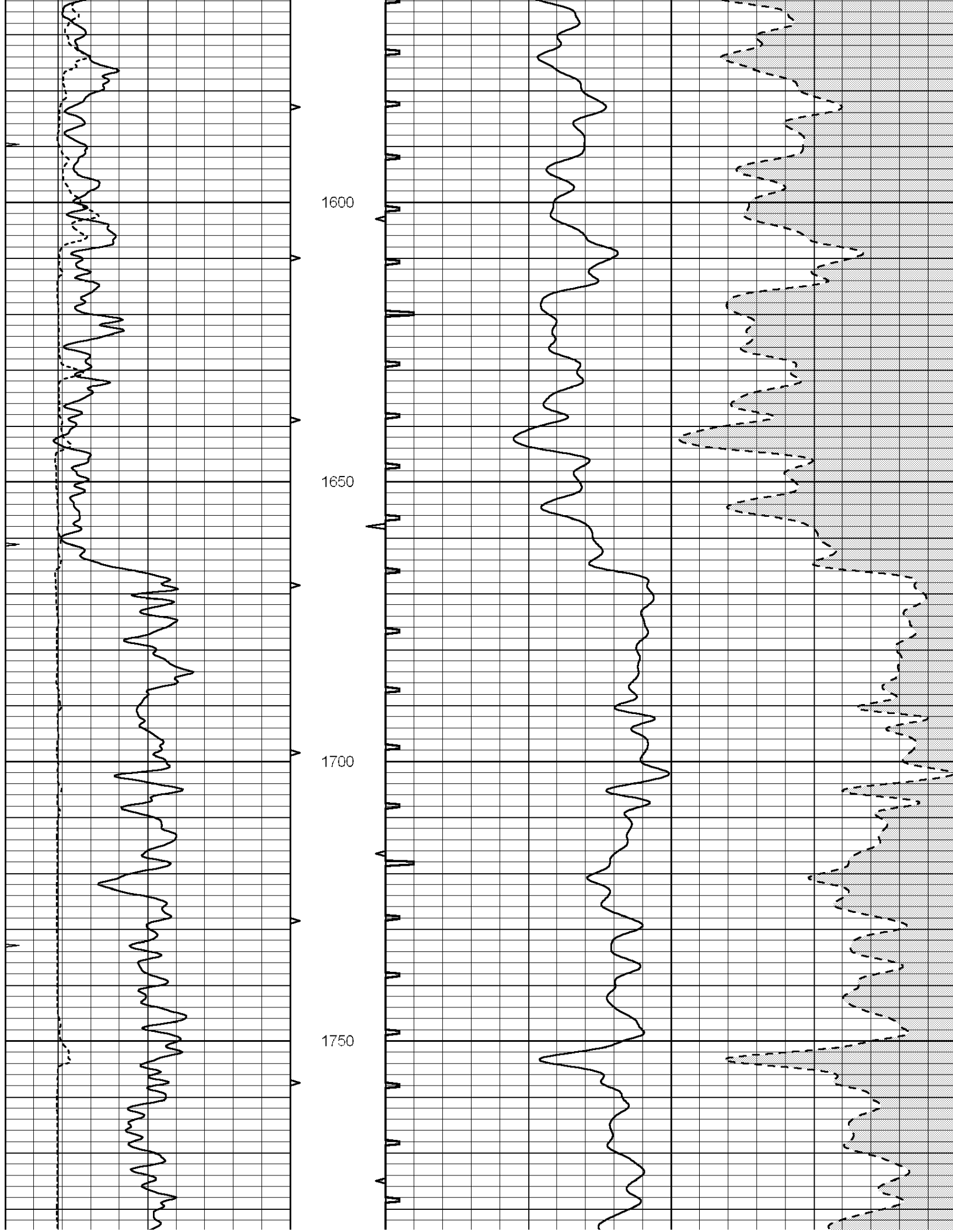


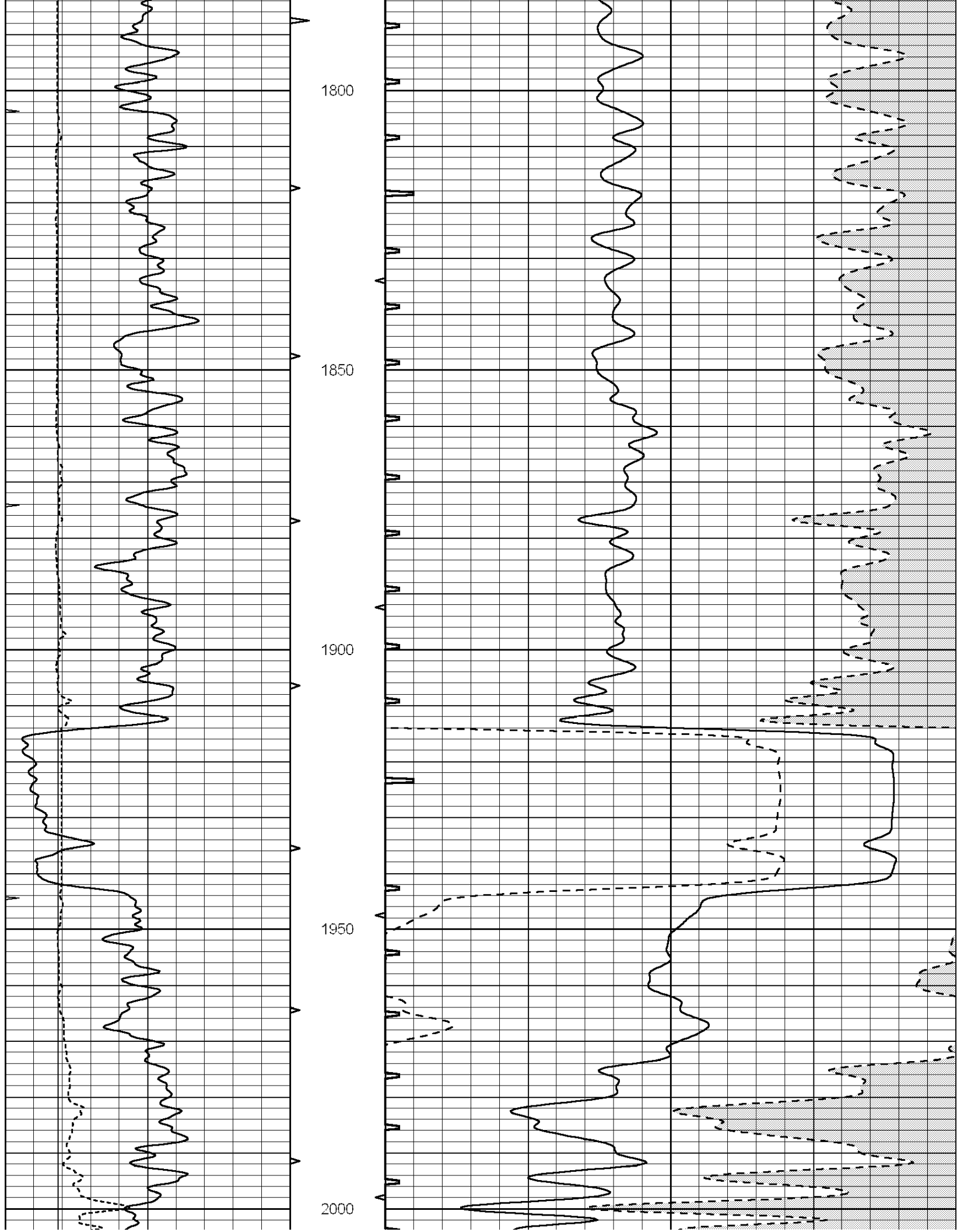


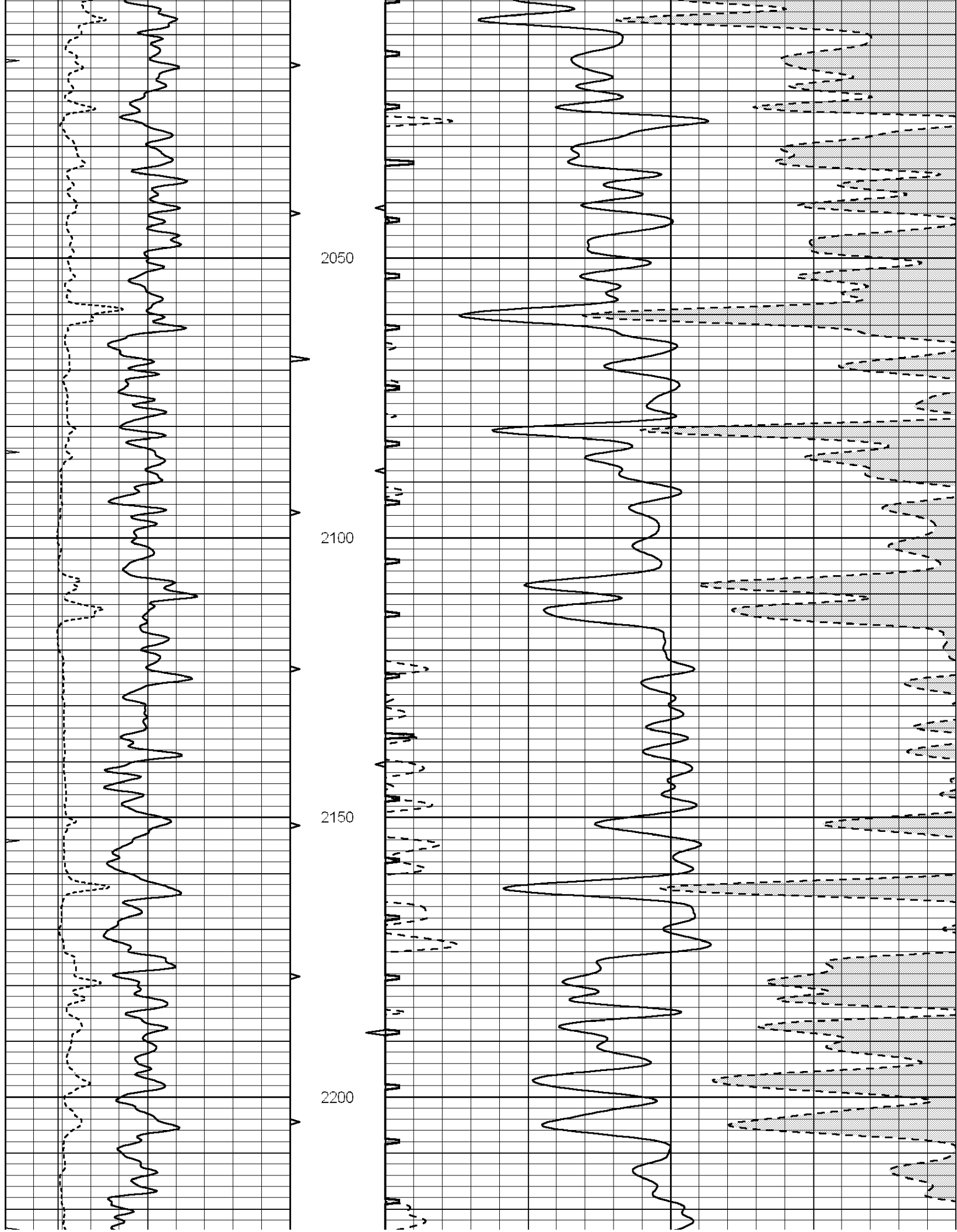


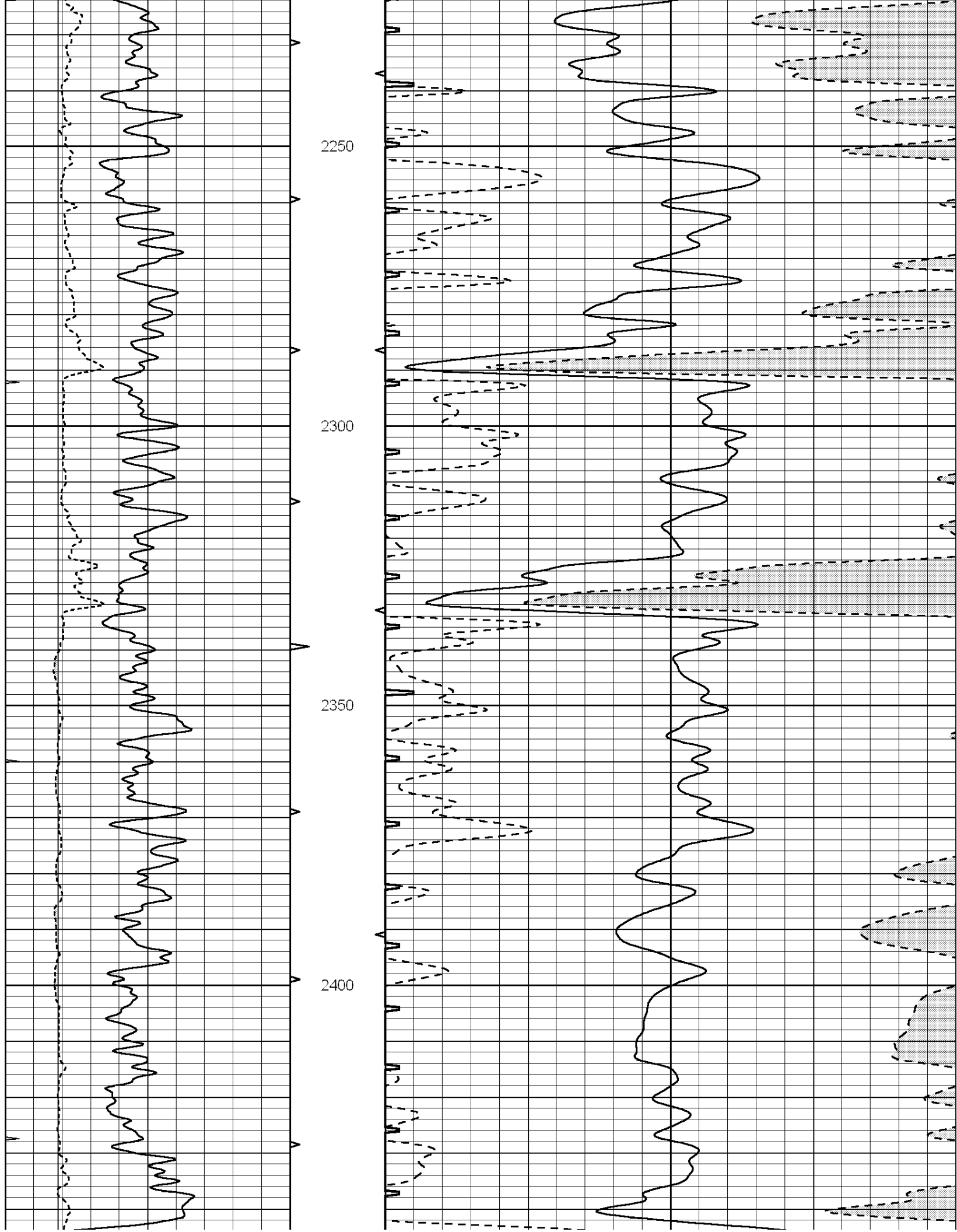


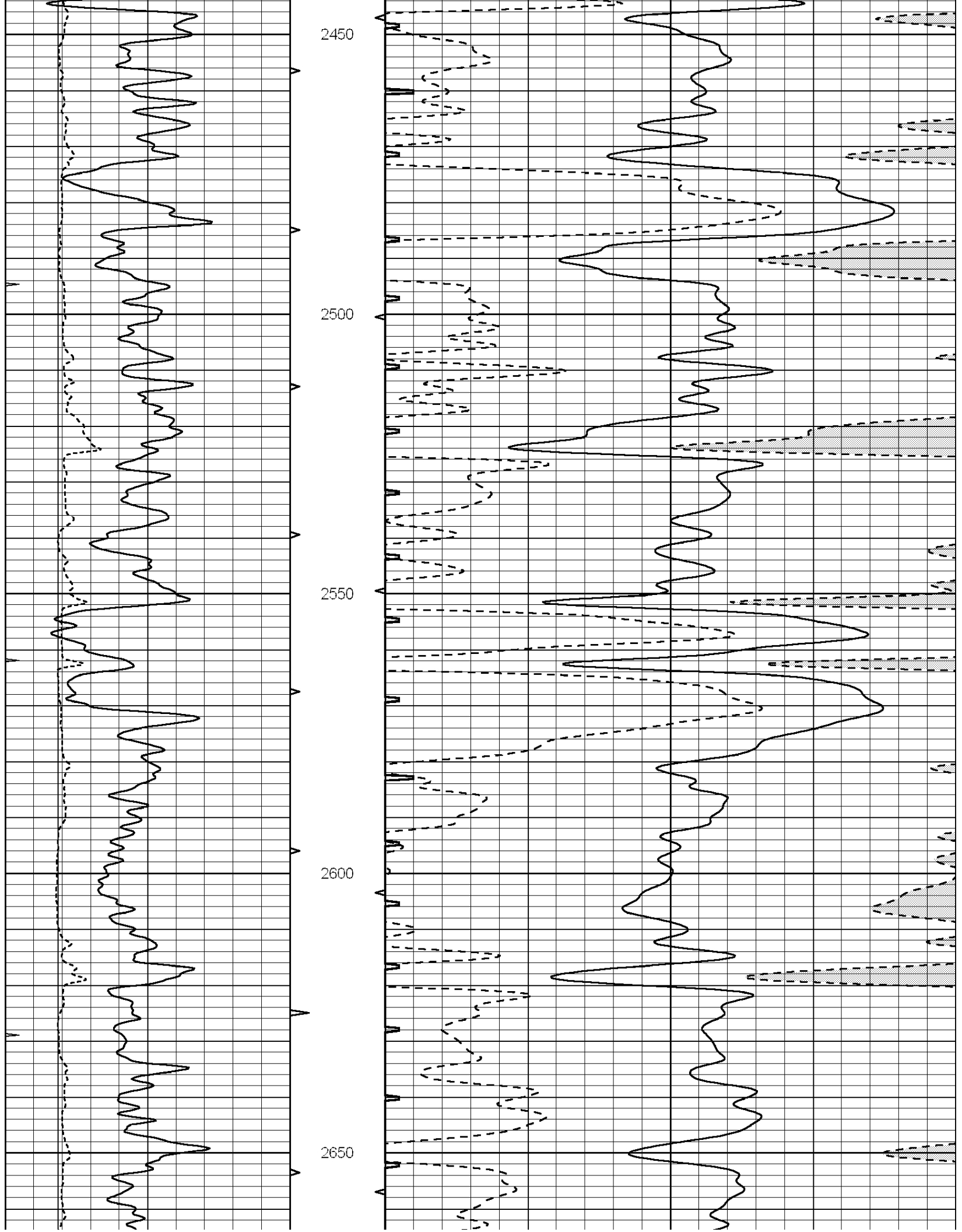


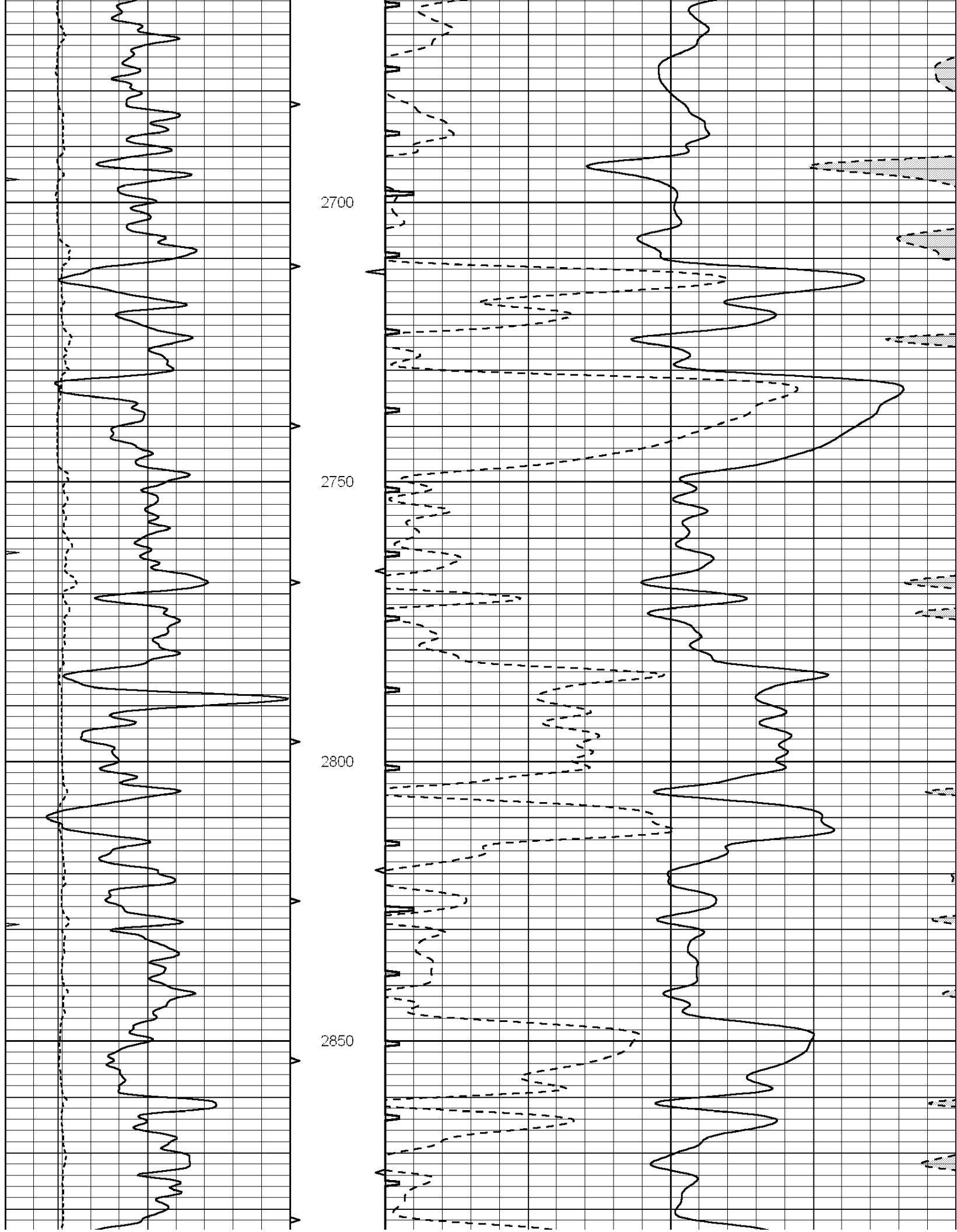


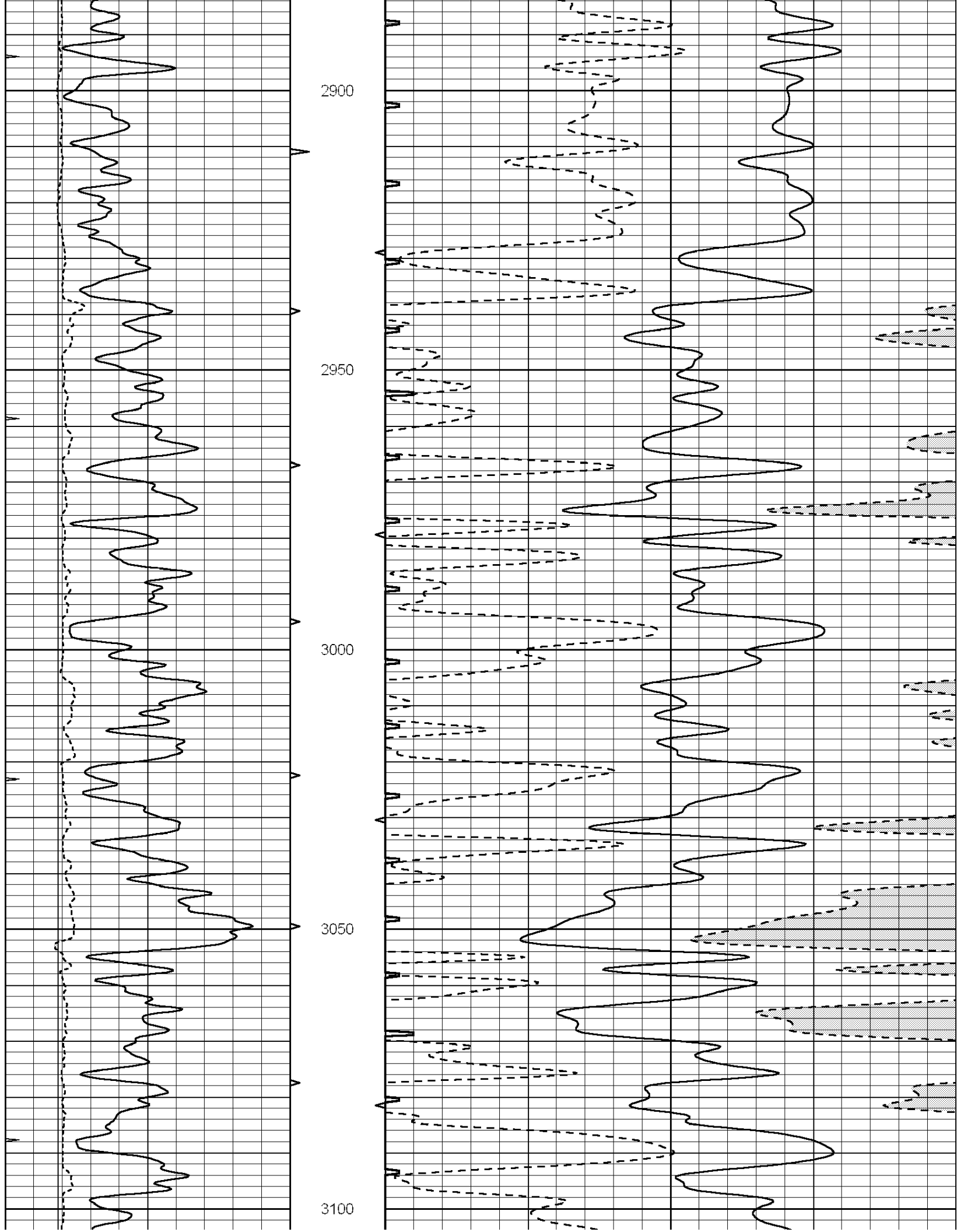


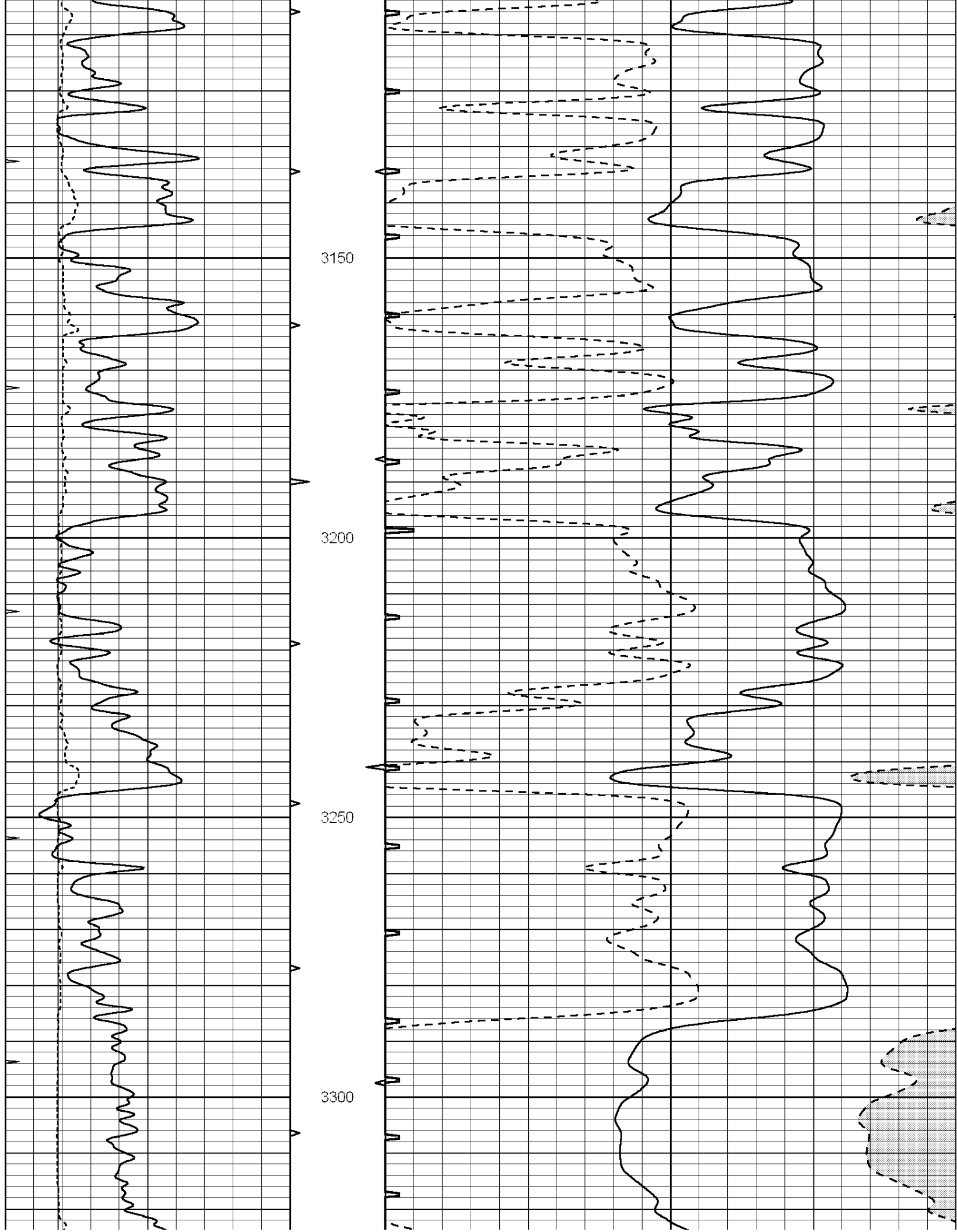


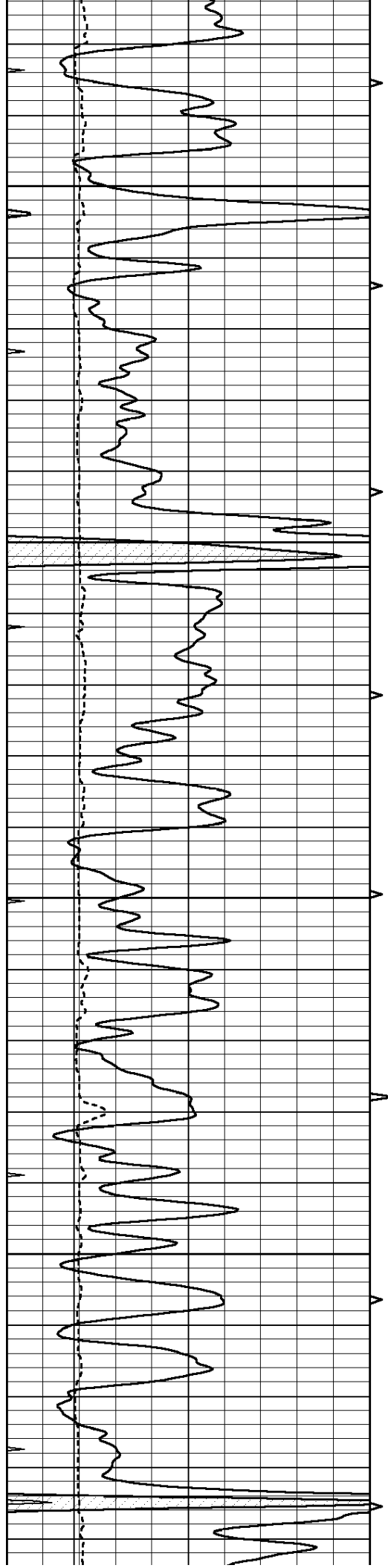










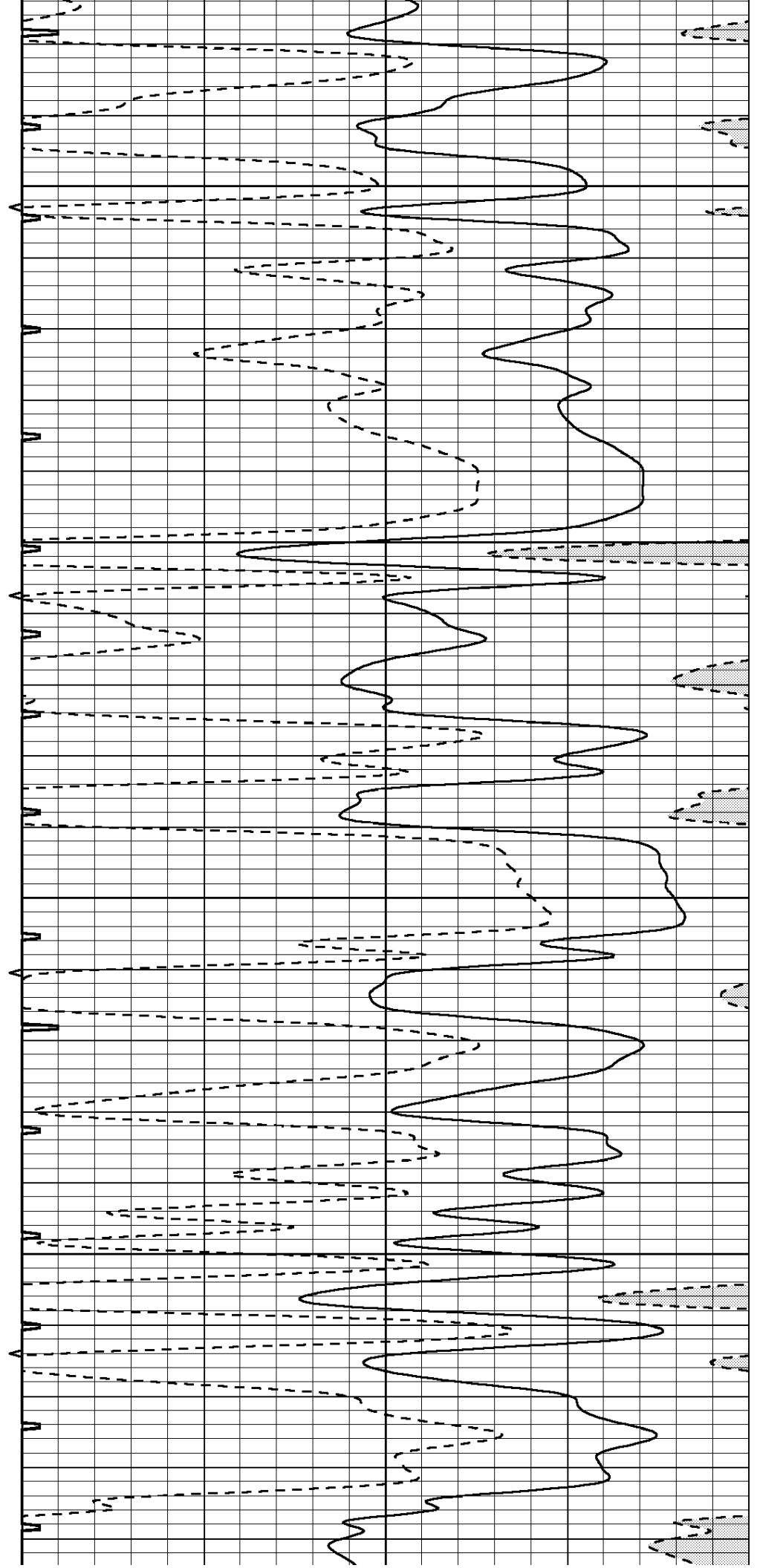


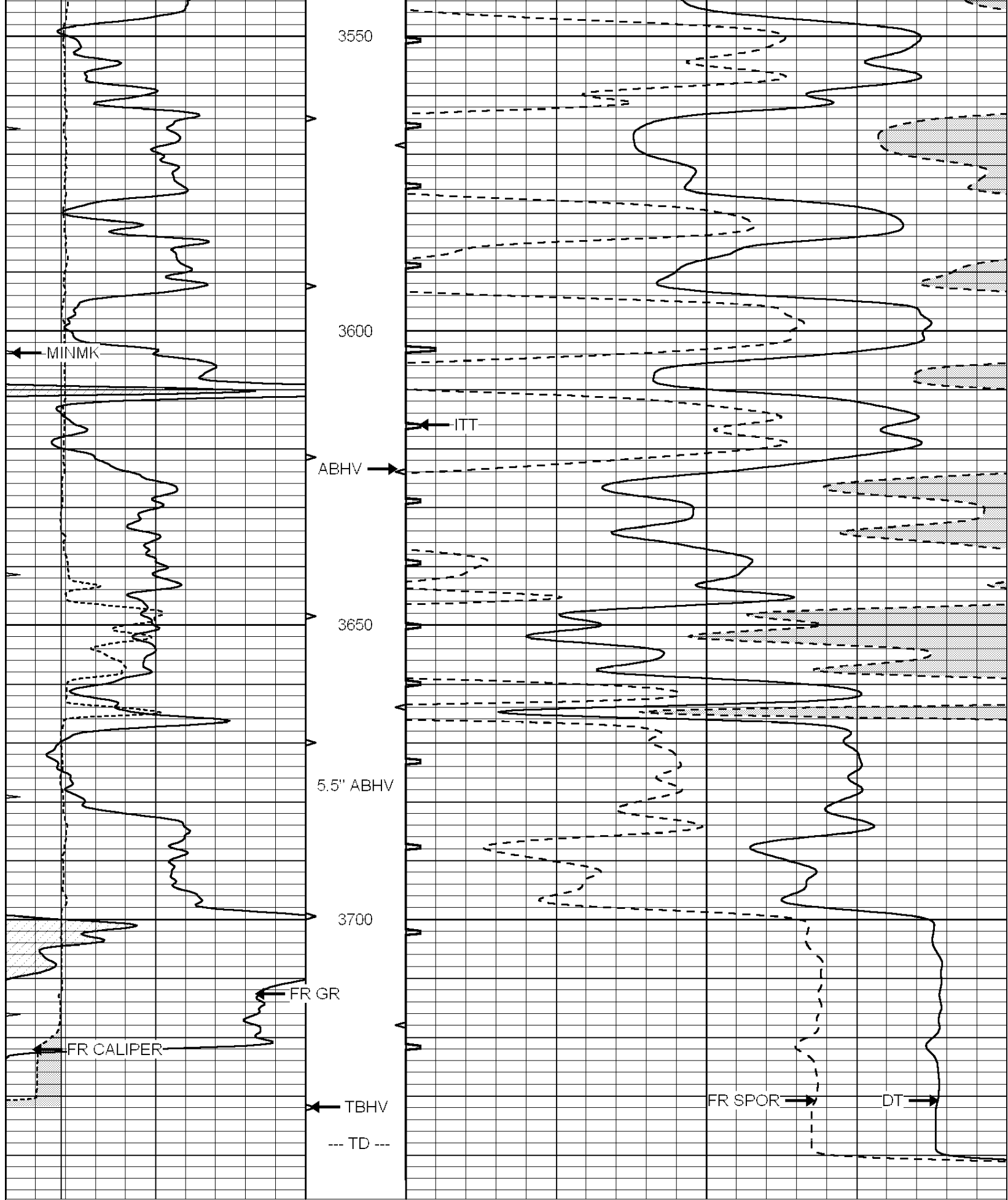
3350

3400

3450

3500





0	GAMMA RAY (GAPI)	150	ABHV	140	DELTA TIME (usec/ft)	40
6	MELCAL (in)	16	10 (ft3)	0 30	SONIC POROSITY (pu)	-10
0	MINMK	20	TBHV	0	ITT (msec)	20

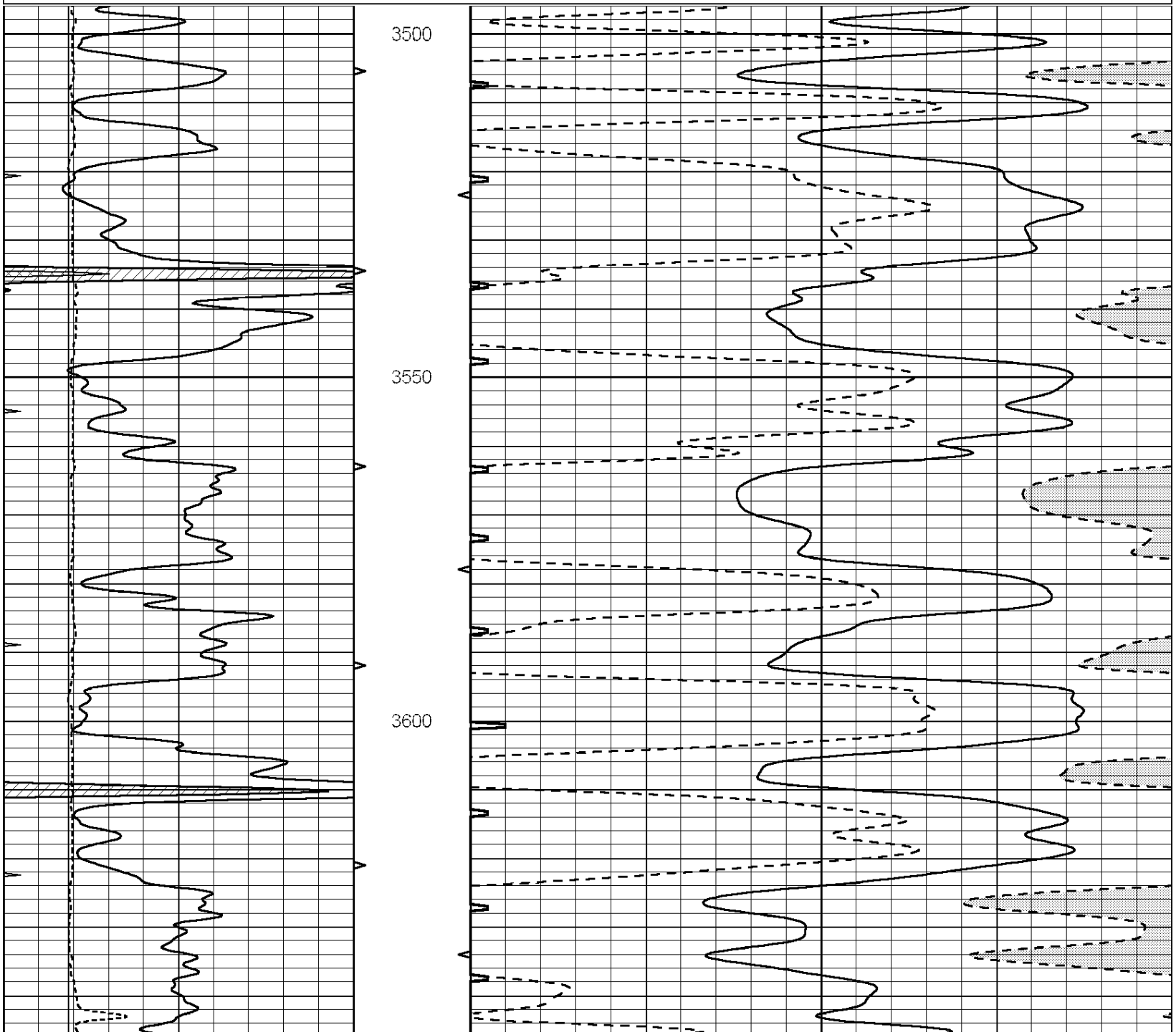


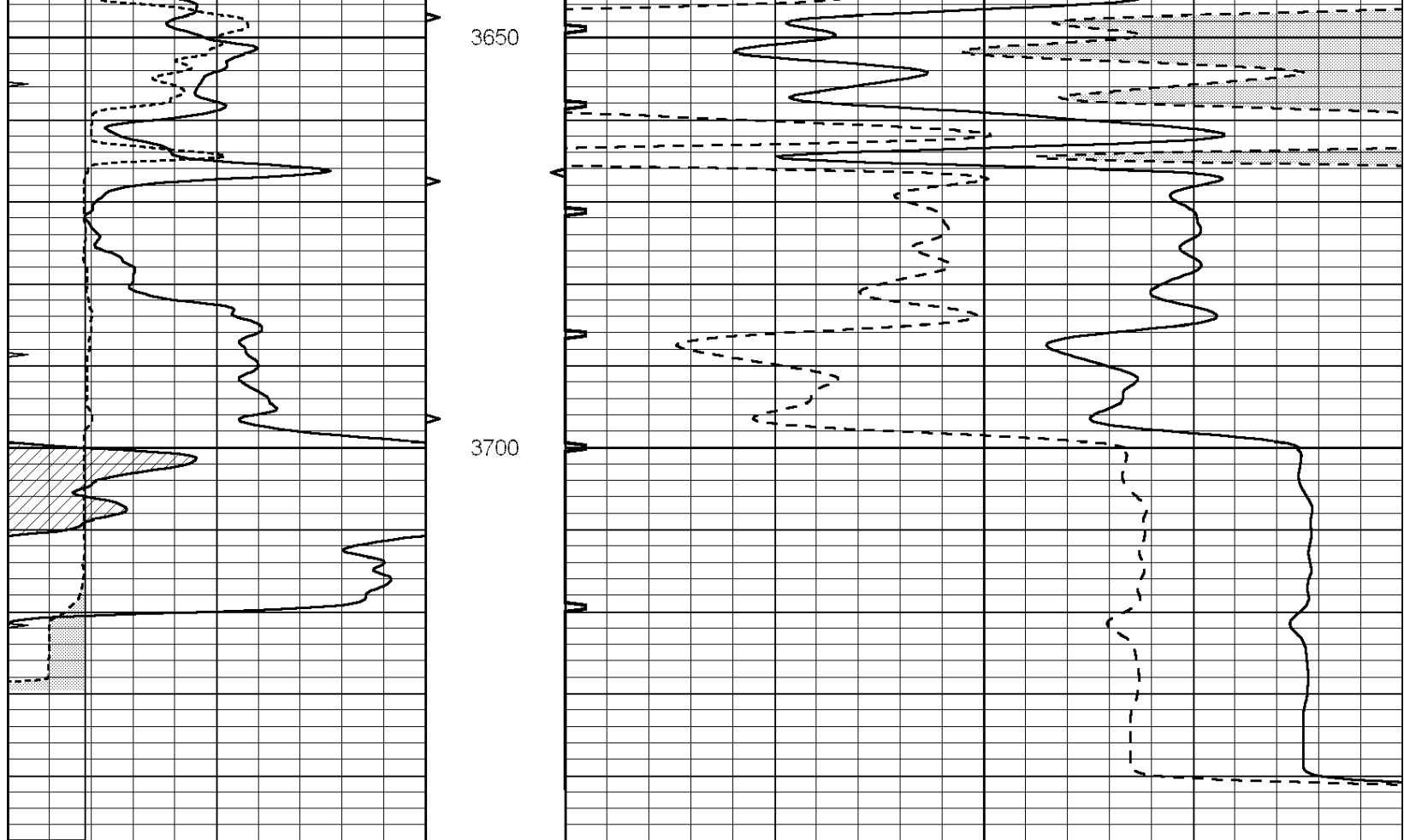
SUPERIOR
Hays,
Kansas

REPEAT SECTION

Database File: 007751ddn.db
 Dataset Pathname: pass4.1
 Presentation Format: slt
 Dataset Creation: Wed Sep 14 12:46:35 2011
 Charted by: Depth in Feet scaled 1:240

0	GAMMA RAY (GAPI)	150	ABHV	140	DELTA TIME (usec/ft)	40
6	MELCAL (in)	16	10 (ft3) 0	30	SONIC POROSITY (pu)	-10
0	MINMK	20	TBHV	0	ITT (msec)	20
			0 (ft3) 10			





0	GAMMA RAY (GAPI)	150	ABHV	140	DELTA TIME (usec/ft)	40	
6	MELCAL (in)	16	10 (ft3)	0	30	SONIC POROSITY (pu)	-10
0	MINMK	20	TBHV	0	ITT (msec)	20	
			0 (ft3)	10			