

GEOLOGIC REPORT

DAVID J. GOLDAK

WICHITA, KANSAS
Scale 1:240 (5"=100') Imperial
Measured Depth Log

Well Name: Tien #1-10
Location: Section 10 - T4S - R23W
License Number: API: 15-137-20583
Spud Date: 09 / 09 / 2011
Surface Coordinates: 1490' FSL and 330' FEL
(Approx. SE-NE-SE)
Region: Norton Co., KS
Drilling Completed: 09 / 14 / 2011
Bottom Hole Coordinates:
Ground Elevation (ft): 2337' K.B. Elevation (ft): 2342'
Logged Interval (ft): 3000' To: 3738' Total Depth (ft): 3738'
Formation: Precambrian
Type of Drilling Fluid: Chemical - Morgan Mud Company

Printed by MUD.LOG from WellSight Systems 1-800-447-1534 www.WellSight.com

OPERATOR

Company: American Energies Corporation
Address: 155 N. Market, Suite 710
Wichita, Kansas 67202

GEOLOGIST

Name: David J. Goldak
Company: D. J. GOLDAK, INC.
Address: 155 N. Market, Suite 710
Wichita, Kansas 67202

General Info

CONTRACTOR: WW Drilling, Rig #8

BIT RECORD:

No.	Size	Make	Jets	Out	Feet	Hours
1	12-1/4	Smith-RR	15-15-15	304	304	2.50
2	7-7/8	Smith-F27	15-14-14	3738	3434	65.50

SURVEYS: 304' - 0.50; 3492' - 1.0; 3738' - 0.75

GENERAL DRILLING & PUMP INFORMATION:

Pumping 60 S/M, 7.8 B/M, with 900 PSI at the Standpipe.
Drilling with 32,000-35,000 lbs on bit, at 80-85 RPM.

Daily Status

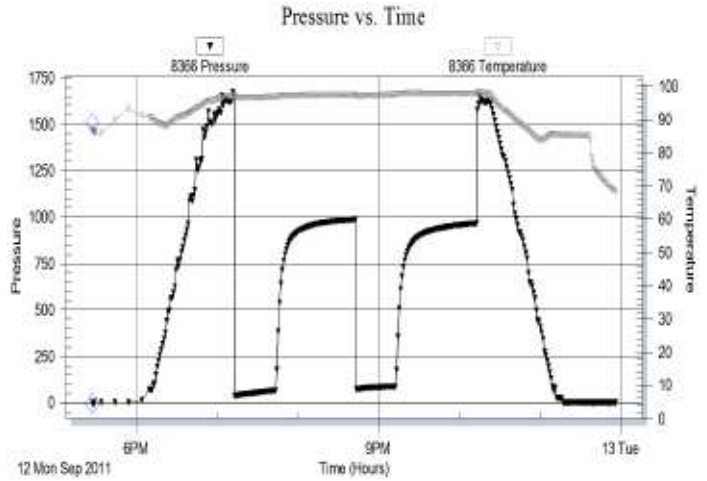
09/09/11 - Spud at 12:00 Noon; Set 8-5/8" Csg at 303'
 09/10/11 - 1,130' Drilling
 09/11/11 - 2,750' Drilling; Displace mud at 2,907'
 09/12/11 - 3,420' Drilling; DST #1 @ 3,492'
 09/13/11 - 3,570' Drilling; DST #2 @ 3,676'
 09/14/11 - 3,738' TOH for logging

DST #1: 3,398' - 3,492' (Tor & Lans A-C)
 30" - 60" - 30" - 60"
 (Tool slid 12' - open the last 2')

IF: Weak blow, building to 4 inches
 ISI: No blow back
 FF: Surface blow in 23 minutes
 FSI: No blow back

RECOVERY: 138' Total Fluid, consisting of:
 138' Mud (100% M); with oil show in the tool

SIP: 986-964; FP: 36-65, 71-86; HP: 1620-1616; BHT: 98

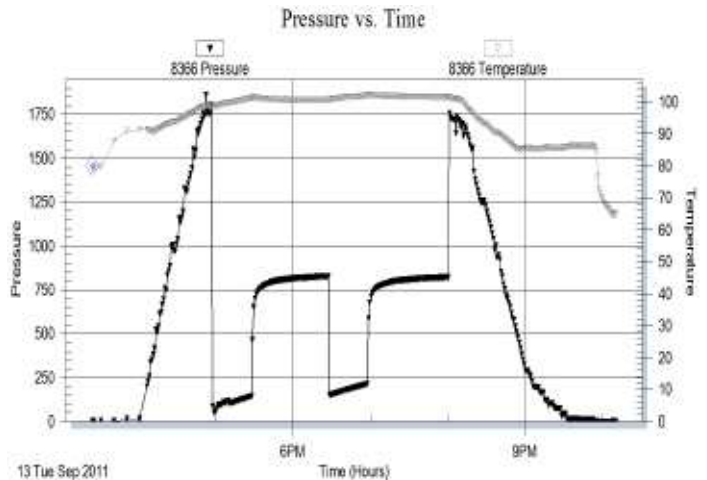


DST #2: 3,624' - 3,676' (Gorham Sand)
 30" - 60" - 30" - 60"

IF: Fair blow, building to BOB in 14 minutes
 ISI: No blow back
 FF: Fair blow, building to BOB in 20 minutes
 FSI: No blow back

RECOVERY: 420' Total Fluid, consisting of:
 42' WCM (24% W, 76% M)
 193' WM w/ trace oil (50% W, 50% M)
 185' SMCW w/ trace oil (94% W, 6% M)
 Chlorides recovery: 72,000 ppm

SIP: 825-821; FP: 48-143, 151-213; HP: 1750-1719; BHT: 102



ROCK TYPES

	Anhy
	Bent
	Brec
	Cht
	Clyst
	Coal
	Congl
	Dol

	Gyp
	Igne
	Lmst
	Meta
	Mrlst
	Salt
	Shale
	Shcol

	Shgy
	Slstst
	Ss
	Till
	Carb sh
	Dol
	Dtd
	Gry sh

	Sandylms
	Shale
	Slststn
	Shlyslts
	Sltysh
	Lms

ACCESSORIES

MINERAL

- Anhy
- Arggrn
- Arg
- Bent
- Bit
- Brecfrag
- Calc
- Carb
- Chtdk
- Chtlt
- Dol
- Feldspar
- Ferrpel
- Ferr
- Glau
- Gyp
- Hvymin
- Kaol
- Marl
- Minxl
- Nodule
- Phos
- Pyr

- Salt
- Sandy
- Silt
- Sil
- Sulphur
- Tuff
- Chlorite
- Dol
- Sand
- Sltly

- Fossil
- Gastro
- Oolite
- Ostra
- Pelec
- Pellet
- Pisolite
- Plant
- Strom
- Fuss
- Oomold

- Clystn
- Dol
- Grysh
- Gryslt
- Lms
- Sandylms
- Sh
- Sltstn
- Igne

FOSSIL

- Algae
- Amph
- Belm
- Bioclst
- Brach
- Bryozoa
- Cephal
- Coral
- Crin
- Echin
- Fish
- Foram

STRINGER

- Anhy
- Arg
- Bent
- Coal
- Dol
- Gyp
- Ls
- Mrst
- Sltstrg
- Ssstrg
- Carbsh

TEXTURE

- Boundst
- Chalky
- Cryxln
- Earthy
- Finexln
- Grainst
- Lithogr
- Microxln
- Mudst
- Packst
- Wackest

OTHER SYMBOLS

POROSITY TYPE

- Earthy
- Fenest
- Fracture
- Inter
- Moldic
- Organic
- Pinpoint
- Vuggy

SORTING

- Well
- Moderate
- Poor

ROUNDING

- Rounded
- Subrnd
- Subang
- Angular

OIL SHOWS

- Even
- Spotted
- Ques
- Dead
- Gas show

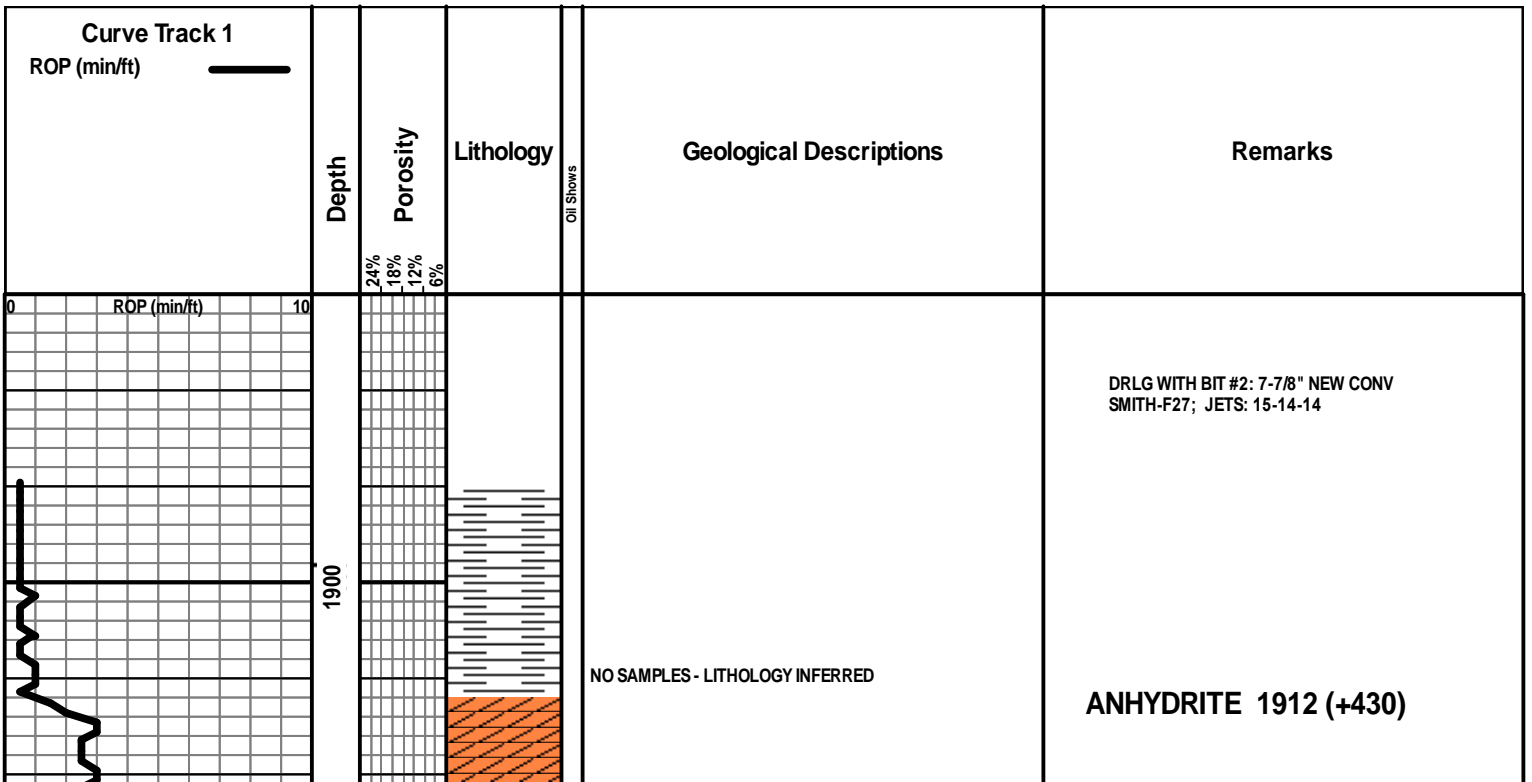
INTERVALS

- Core
- Dst

- Dst

EVENTS

- Rft
- Sidewall
- Conn

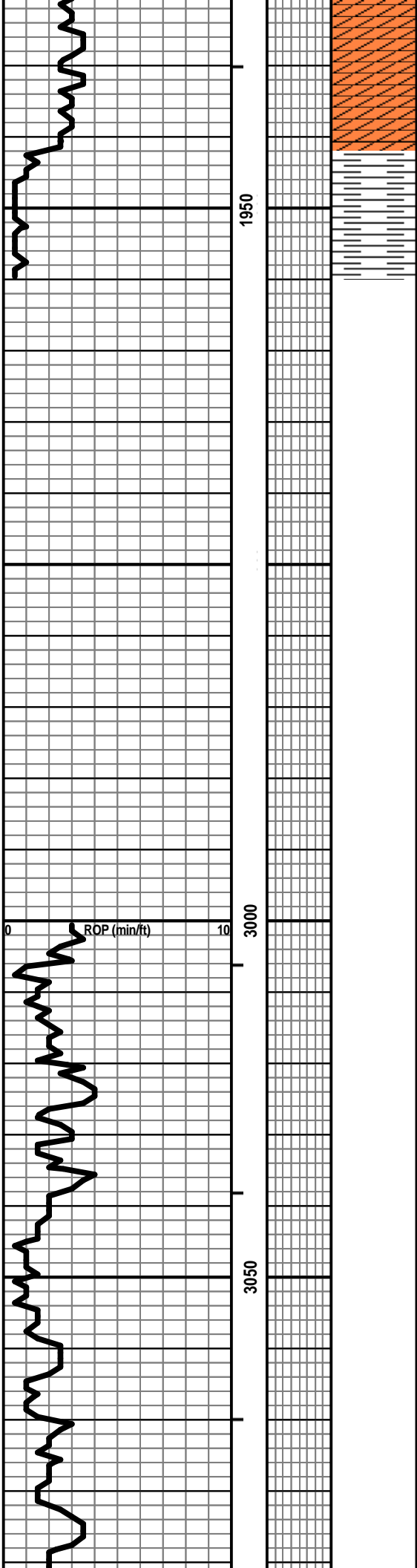


NO SAMPLES - LITHOLOGY INFERRED

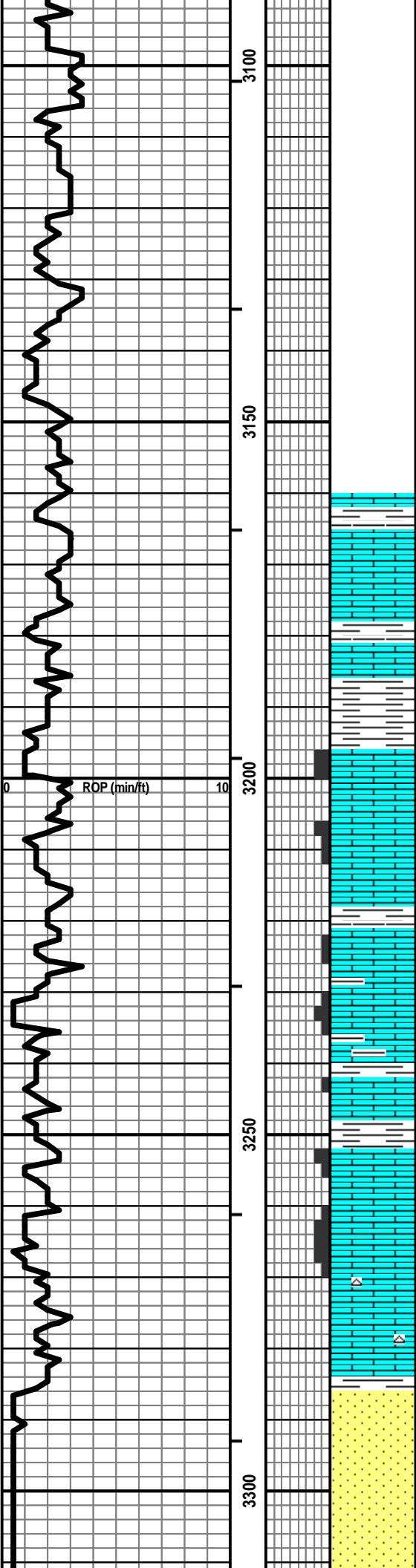
BASE OF ANHY 1942 (+400)

DISPLACE MUD SYSTEM @ 2,907'

MUD CHECK @ 2930': Vis: 65, Wt: 8.6,
YP: 22, GelS: 15/34, pH: 11.5, WL: 6.8,
Chl: 700, Sol: 2.2, LCM: 1#



Vis: 72, Wt: 8.9,
LCM: 2#



LS - CRM / TAN / GY, VF / F XLN, FOSS IN PT, SCAT CHKY,
PRED DNS, NS W/SH - GY / GRN, CALC IN PT

TOPEKA 3196 (-854)

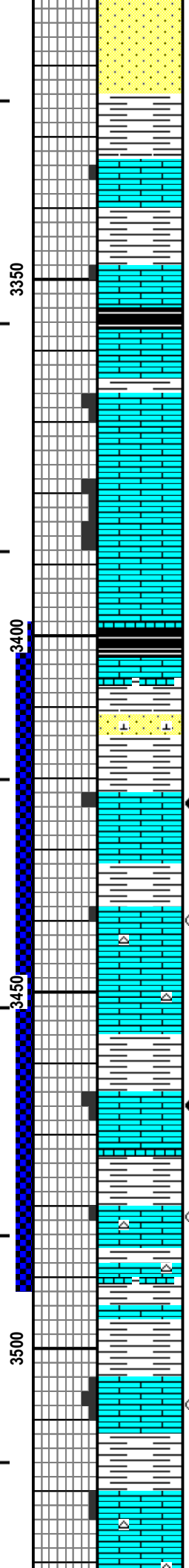
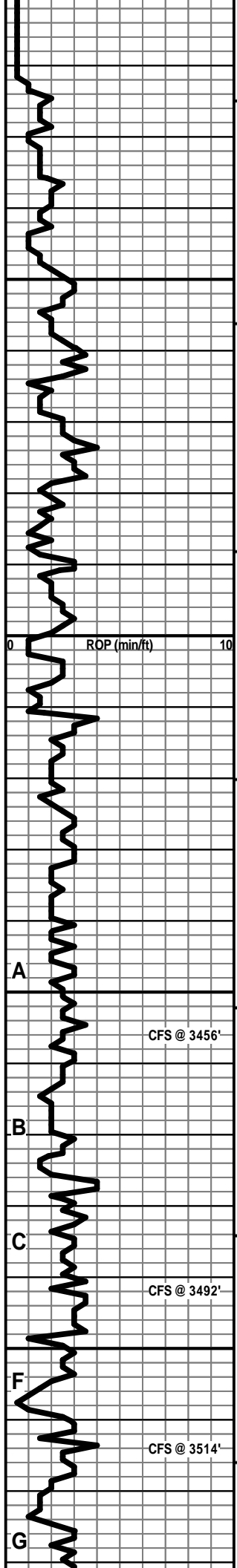
LS - CRM / LT GY, VF / F XLN, FOSS, P/F INTXLN + PPT POR
IN PT, CHKY IN PT / DNS, NS

Vis: 60, Wt: 8.8,
LCM: 2#

LS - CRM / LT GY / TAN, VF / F XLN, FOSS IN PT, SCAT P / TR F
PPT + VUG POR, ARGIL IN PT, PRED DNS, NS W/SH - GY /
GRN / RED

LS - CRM / TAN, VF / F XLN, SCAT REXLN CALC, FOSS, P / F
VUG + PPT POR, SCAT MOLDIC POR, CHKY IN PT / DNS, NS
W/CHT - CRM / TAN / LT GY

SS - GY / CRM / GRN / SCAT RED, SLT / VF QTZ GR, CALC IN
PT, F / G INTGR POR, NS



SH - GY / GRN / RED W/LS - CRM / GY, VF / F XLN, FOSS IN PT, SCAT PINTXLN + PPT POR, PRED DNS, NS

LS - CRM / TAN, VF / F XLN, FOSS, SCAT PPT + INTXLN POR, CHKY IN PT, PRED DNS, NS

LS - CRM / TAN / GY, VF / F XLN, FOSS IN PT, SCAT PPT + INTXLN POR, CHKY IN PT / DNS, NS W/SH - BLK, CARB

LS - CRM / WHT, F XLN, OOL + FOSS, SCAT P / F INTOOL / INTXLN POR, SCAT VUG POR, FSFO, F ODOR, SPTY / SAT TN, G FLOUR + CUT

LS - CRM / LT GY, VF / F XLN, FOSS IN PT, TR P INTXLN POR, CHKY IN PT, PRED DNS, TR FO, NO ODOR, TR SPTY STN W/ CHT - LT GY / WHT

LS - CRM / LT GY, F XLN, OOL, SL FOSS, SCAT P / F INTOOL POR, SCAT VUG POR, FSFO, F ODOR, SPTY / SAT STN, G FLOUR + CUT

LS - CRM / LT GY / SCAT TAN, VF / F XLN, OOL + FOSS IN PT, SCAT P / TR F INTOOL + VUG POR, CHKY IN PT, SL / F SFO, FT ODOR, SPTY BRN / BLK STN, F / G FLOUR + CUT W/ SCAT CHT - GY

LS - CRM / TAN, VF / F XLN, SCAT M RECLN CALC, FOSS IN PT, P / F VUG + PPT POR, SSFO + GILS, BLK / ASPH IN PT, SCAT BARR POR, NO ODOR, SPTY DK BRN / BLK STN, F / G FLOUR + CUT

LS - CRM / WHT, VF / F XLN, OOL IN PT, TR P INTXLN POR, CHKY IN PT, PRED DNS, NS, NO ODOR W/ CHT - LT GY / CRM / TAN / WHT

HEEBNER 3399 (-1057)

Vis: 65, Wt: 9.0,
LCM: 1.5#

TORONTO 3422 (-1080)

LANSING 3438 (-1096)

DST #1: 3,398' - 3,492' (Tor & LKC 'A'-'C')
30" - 60" - 30" - 60"
(tool slid 12' - open the last 2')

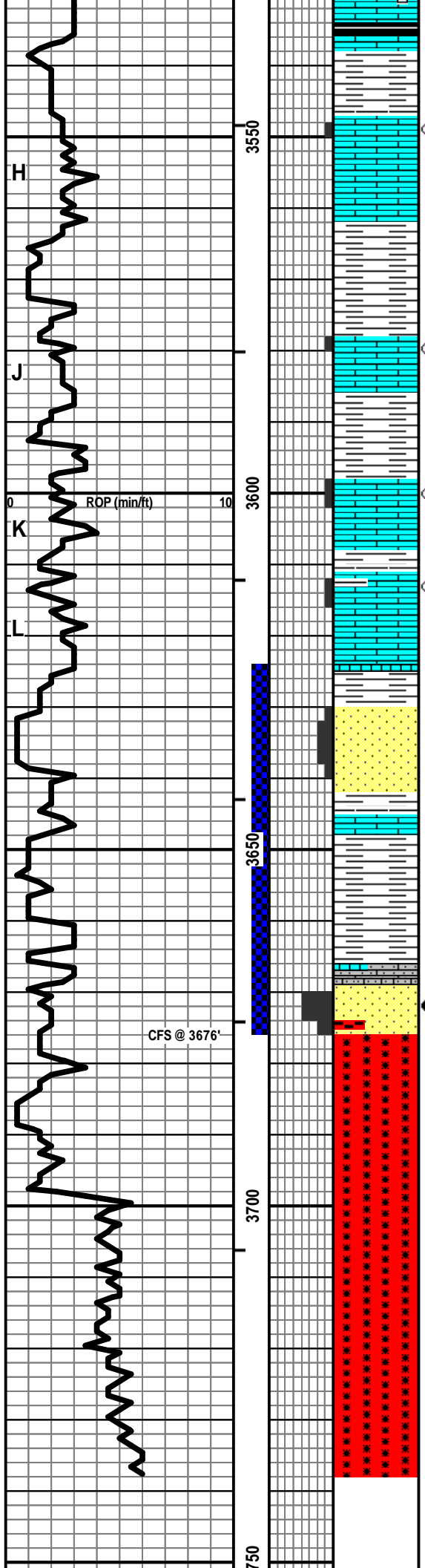
IF: Weak blow, bldg to 4 inches
ISI: No blow back
FF: Surface blow in 23 minutes
FSI: No blow back

RECOVERY: 138' Total Fluid:
138' Mud (100% M)
with oil show in the tool

SIP: 986-964 HP: 1620-1616
FP: 36-65, 71-86 BHT: 98

Vis: 54, Wt: 9.0, YP: 18,
GelS: 12/29, pH: 11.5, WL: 6.8,
Chl: 800, Sol: 5.0, LCM: 1#

PIPE STRAP @ 3,492': SHORT 2.57'



LS - CRM / TAN / LT GY, VF / F XLN, OOL + FOSS, SCAT P
INTXLN / INTPART POR, SSFO, NO ODOR, SCAT SPTY STN,
SCAT F / G FLOUR + CUT

LS - CRM / LT GY / WHT, VF / F XLN, OOL + FOSS IN PT, SCAT
P / TR F INTOOL / INTPART POR, PRED SSFO / TR FSFO, NO
ODOR, SPTY / TR SAT STN, F / G FLOUR + CUT

LS - CRM / WHT / LT GY, F XLN, OOL, FOSS IN PT, P / SCAT F
INTOOL POR, SCAT VUG + FOSS MOLD POR, SL / F SFO, FT
ODOR, SPTY / SCAT SAT STN, F / G FLOUR + CUT

LS - CRM / TAN, VF / F XLN, FOSS, SL OOL, SCAT P / F VUG +
MOLDIC POR, SL / F SFO, FT ODOR, SPTY / SAT STN, F / G
FLOUR + CUT (CAVINGS IN PT ?)

SS - GY / GRN, SLT / VF / F QTZ GR, P / F INTGR POR, NS W/
SH - RED / GY / GRN

SH - RED / GRN / GY W / LS - TAN / MOT RED, F XLN, PRED
DNS, NS

LS - WHT / CRM, F / SCAT M XLN, AREN, F / M QTZ GR,
GLAUC, P / NO VIS POR, SSFO, SPTY STN W / SS - CLSTRS,
LT GY, F / C QTZ GR, PSRTD, SR / WR, CALC CEM, F / G
INTGR POR, FRI IN PT, F / G SFO, STRG ODOR, SAT / SPTY
STN, G FLOUR + CUT W / SCAT UNCONS QTZ, M / C GR W/
SCAT GW MAT - WEATH FELD + LRG ANG QTZ GR

GW MAT - UNCONS QTZ, RED SHALE, WEATH FELD

GRANITE - QTZ, FELD, MICA, HVY MIN

GRANITE - QTZ, FELD, MICA, HVY MIN

DST #2: 3,624' - 3,676' (Gorham Sand)
30" - 60" - 30" - 60"

IF: Fair blow, bldg to BOB in 14 min.
ISI: No blow back
FF: Fair blow, bldg to BOB in 20 min.
FSI: No blow back

RECOVERY: 420' Total Fluid:
42' WCM (24% W, 76% M)
193' WM w/ tr oil (50% W, 50% M)
185' SMCW w/ tr oil (94% W, 6% M)
Chlorides recovery: 72,000 ppm

SIP: 825-821 HP: 1750-1719
FP: 48-143, 151-213 BHT: 102

BASE OF KC 3625 (1283)

Vis: 69, Wt: 9.1, YP: 22,
GelS: 15/35, pH: 11.5, WL: 6.4,
Chl: 1200, Sol: 5.7, LCM: 3#

GORHAM SAND 3669 (-1327)

GRANITE WASH 3676 (-1334)

GRANITE 3699 (-1357)

Vis: 60, Wt: 9.2,
LCM: 2#

TOTAL DEPTH 3738 (-1396)

	3				
--------------------------------------------------------------------------------	---	---------------------------------------------------------------------------------	--	--	--