



**GAMMA RAY  
NEUTRON  
COMPLETION LOG**

Company	TAILWATER, INC.	
Well	EAST WITTMAN #11-T	
Field	GARNETT SHOESTRING	
County	ANDERSON	State KANSAS
Location:	APL # : 15-003-25136-00-00	
Other Services	4785' FNL & 1159' FWL NE SE SW SW	
Permanent Datum	SEC 15 TWP 20S RGE 20E	Elevation 963EST
Log Measured From	G.L.	K.B. 963EST
Drilling Measured From	G.L.	D.T. 963EST
Date	9-12-2011	
Run Number	1 NEWWELL	
Depth Driller	701'	
Depth Logger	689.0'	
Top Log Interval	SURFACE	
Bottom Logged Interval	FULL	
Fluid Level	FULL	
Type Fluid	WATER	
Production Casing	2 7/8" @ 891'	
Max. Recorded Temp		
Estimated Cement Top		
Calculated Cement Top		
Amount & Type Admix		
Drilling Contractor	EVANS ENERGY	
Equipment Number	107	
Location	UDEN, D.	
Recorded By	HUTCHINSON, D.	
Witnessed By		

<<< Fold Here >>>

All interpretations are opinions based on inferences from electrical or other measurements and we cannot and do not guarantee the accuracy or correctness of any interpretation, and we shall not, except in the case of gross or willful negligence on our part, be liable or responsible for any loss, costs, damages, or expenses incurred or sustained by anyone resulting from any interpretation made by any of our officers, agents or employees. These interpretations are also subject to our general terms and conditions set out in our current Price Schedule.

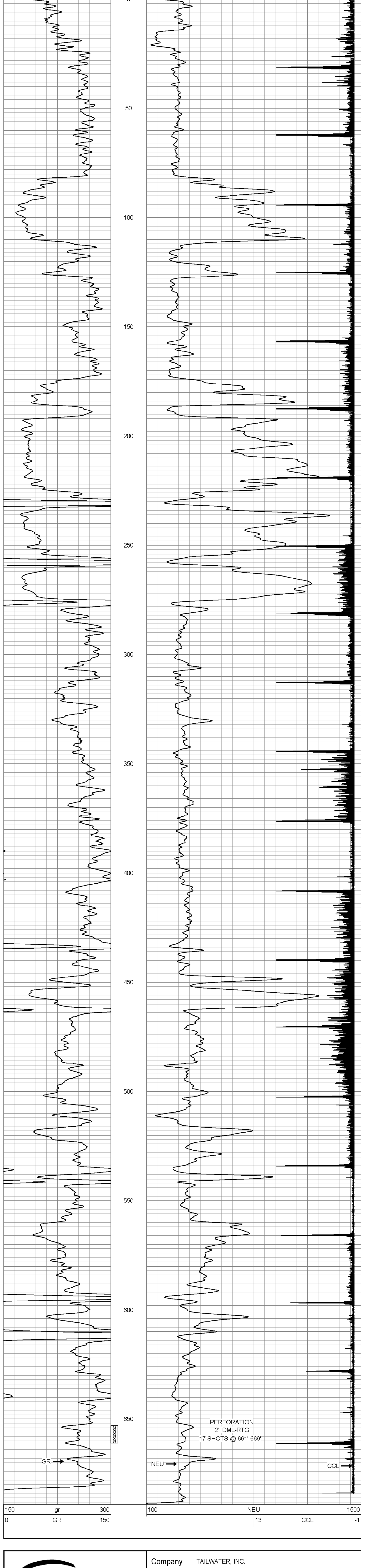
Comments

THANK YOU

Sensor	Offset (ft)	Schematic	Description	Len (ft)	OD (in)	Wt (lb)
GR	7.59		GR-TITAN_169 (TIT169_001) Titan 1 11/16" Gamma Ray	4.75	1.69	20.00
CCL	5.05		CCL-TITAN_169 (TIT169) Titan 1 11/16" Logging CCL	1.83	1.69	7.50
NEU	0.63		NEU-TITAN_169 (TIT169_001) Titan 1 11/16" Neutron	4.33	1.69	20.00

Dataset: east wittman #11-t.db: field/well/run1/pass1  
 Total Length: 10.92 ft  
 Total Weight: 47.50 lb  
 O.D.: 1.69 in

Database File: g:\east wittman #11-t.db  
 Dataset Pathname: pass1  
 Presentation Format: gr-n-ccl  
 Dataset Creation: Mon Sep 12 09:57:03 2011 by Log Std Casedhole 07122  
 Charted by: Depth in Feet scaled 1:240



	Company	TAILWATER, INC.
	Well	EAST WITTMAN #11-T
	Field	GARNETT SHOESTRING
	County	ANDERSON SEC. 15 TWP. 20S RGE. 20E
	State	KANSAS
	Date	9-12-2011