



Microresistivity Log

DIGITAL LOG (785) 625-3858

API No.	15-039-21138-00-00		
Company	Prairie Fire Petroleum, LLC		
Well	Henningson #1-20		
Field	Shirley		
County	Decatur	State	Kansas
Location	NW SE SW 990' FSL / 1650' FWL		
Sec: 20	Twp: 2S	Rge: 26W	Other Services CNL / CDL DIL
Permanent Datum	Ground Level	Elevation 2631	Elevation
Log Measured From	Kelly Bushing	8 Ft. Above Perm. Datum	K.B. 2639
Drilling Measured From	Kelly Bushing		D.F. 2631
			G.L. 2631

Date	9/18/2011	
Run Number	Two	
Depth Driller	3780	
Depth Logger	3783	
Bottom Logged Interval	3782	
Top Log Interval	3300	
Casing Driller	8.625 @ 254	
Casing Logger	264	
Bit Size	7.875	
Type Fluid in Hole	Chemical	
Salinity, ppm CL	1700	
Density / Viscosity	9.5	57
pH / Fluid Loss	11.5	8.8
Source of Sample	Flowline	
Rm @ Meas. Temp	2.00 @ 80	
Rmf @ Meas. Temp	1.50 @ 80	
Rmc @ Meas. Temp	2.70 @ 80	
Source of Rmf / Rmc	Charts	
Rm @ BHT	1.41 @ 114	
Operating Rig Time	3 Hours	
Max Rec. Temp. F	114	
Equipment Number	15	
Location	Hays	
Recorded By	R. Barnhart	
Witnessed By	Doug Frickey	

<<< Fold Here >>>

All interpretations are opinions based on inferences from electrical or other measurements and we cannot and do not guarantee the accuracy or correctness of any interpretation, and we shall not, except in the case of gross or willful negligence on our part, be liable or responsible for any loss, costs, damages, or expenses incurred or sustained by anyone resulting from any interpretation made by any of our officers, agents or employees. These interpretations are also subject to our general terms and conditions set out in our current Price Schedule.

Comments

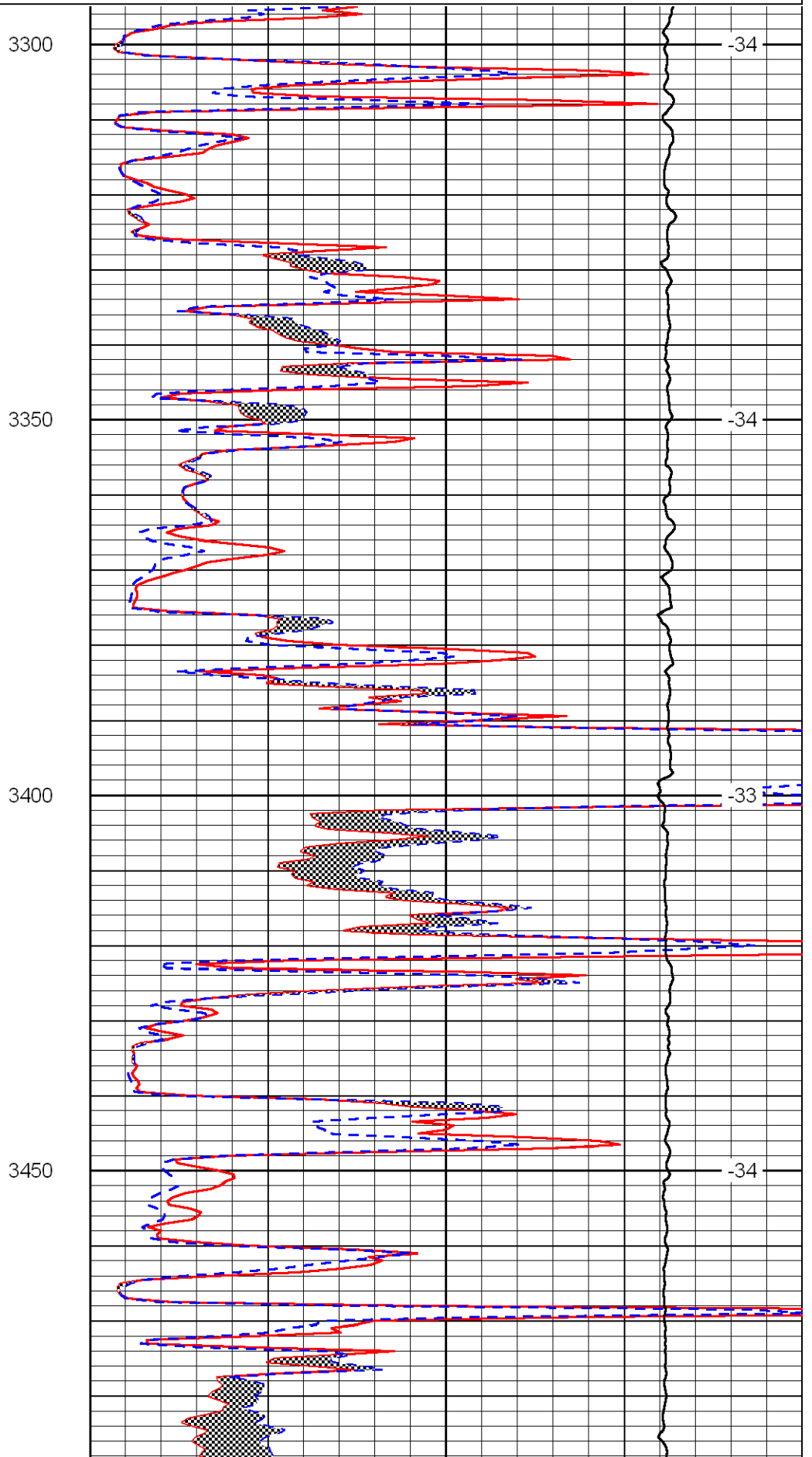
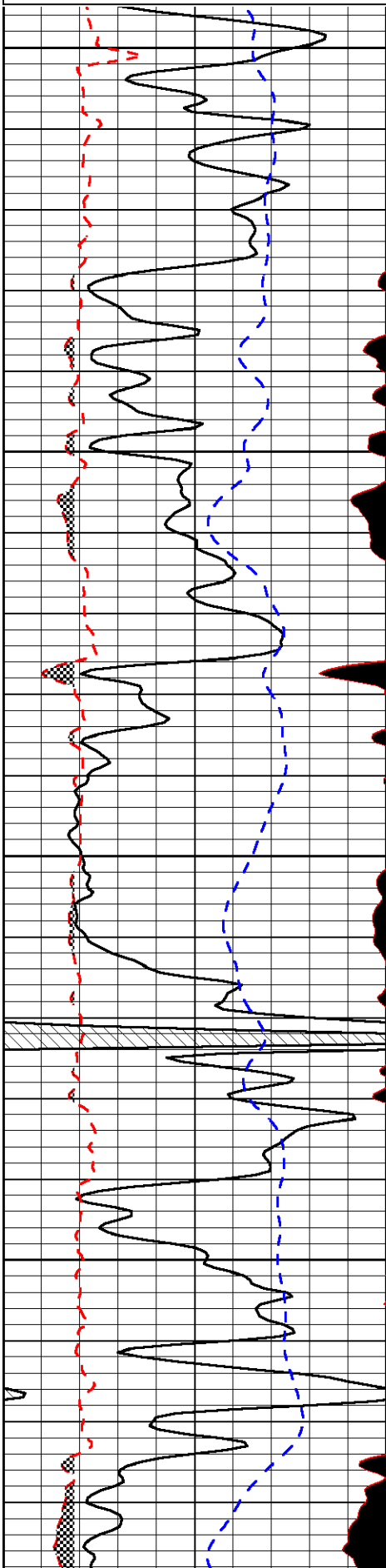
Thank you for using Log-Tech, Inc.
 (785) 625-3858

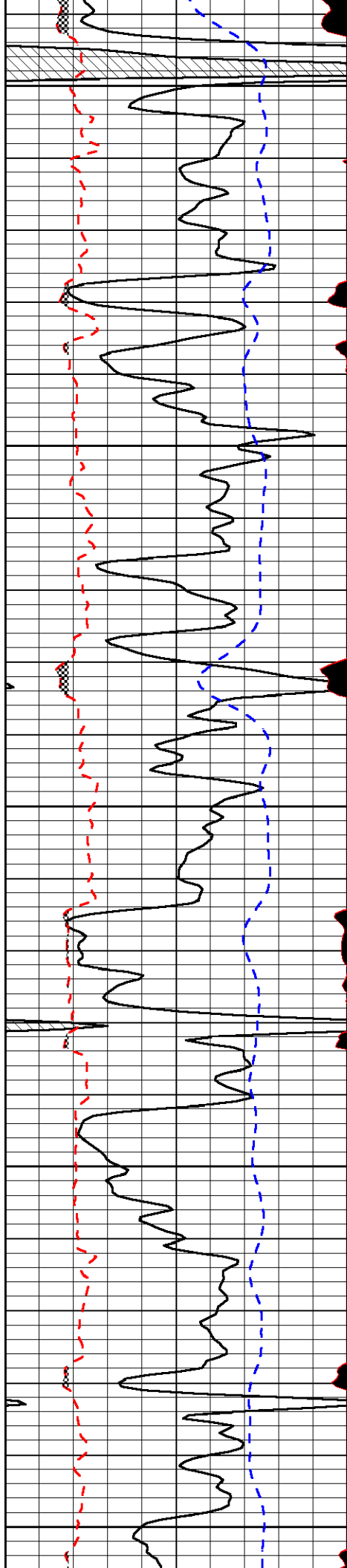
 Norcatur, KS:
 5W to Train Tracks, 2N
 1/2E, N into

Database File: prairiefirehd.db
 Dataset Pathname: dil/prfmain
 Presentation Format: micro
 Dataset Creation: Sun Sep 18 22:53:51 2011
 Charted by: Depth in Feet scaled 1:240

0	Gamma Ray	150
6	MCAL (GAPI)	16
2.875	Mud Cake (GAPI)	7.875
-200	SP	0

0	Micro Inverse 1 X 1	40
0	Micro Normal 2"	40
10000	Line Weight	0
		LSPD





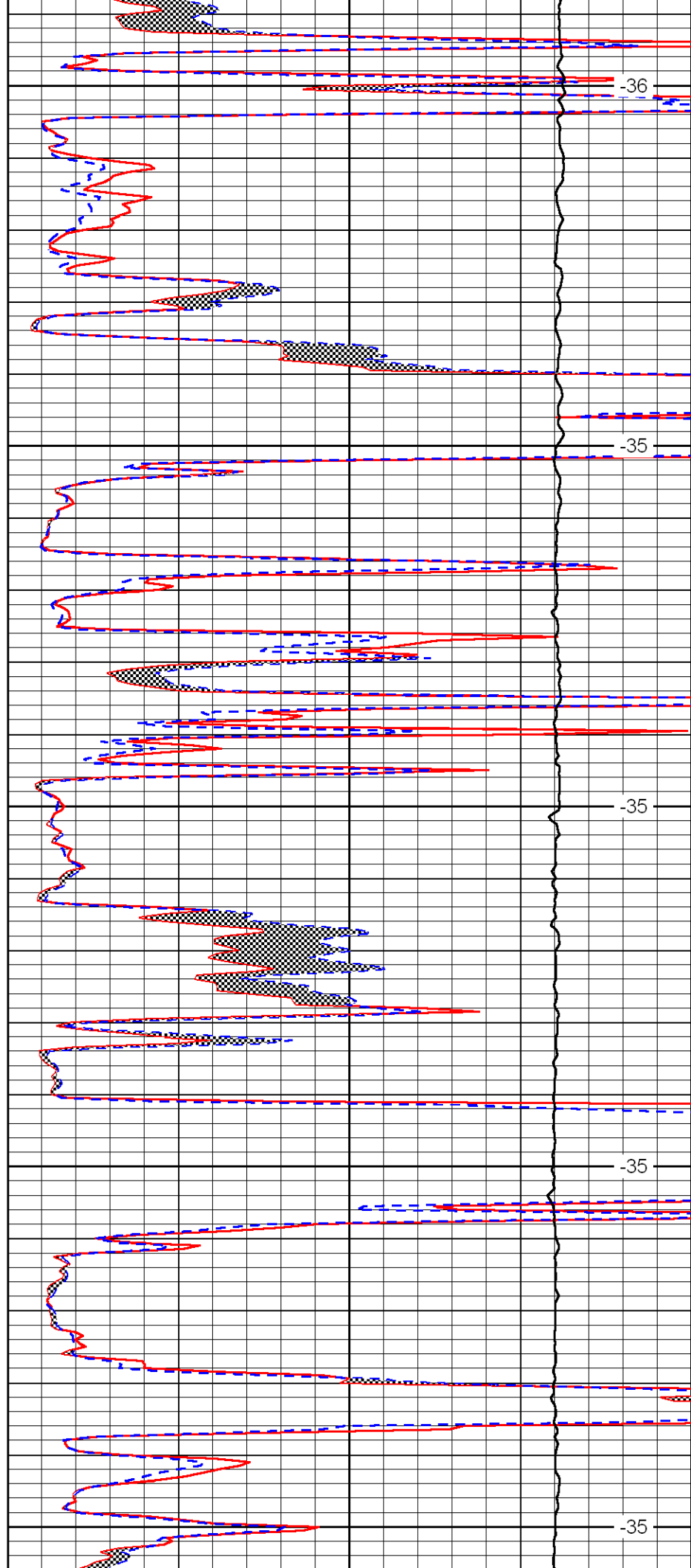
3500

3550

3600

3650

3700



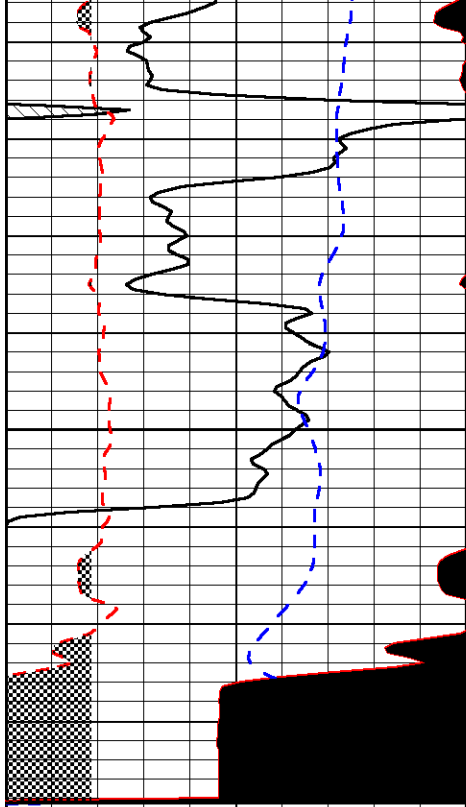
-36

-35

-35

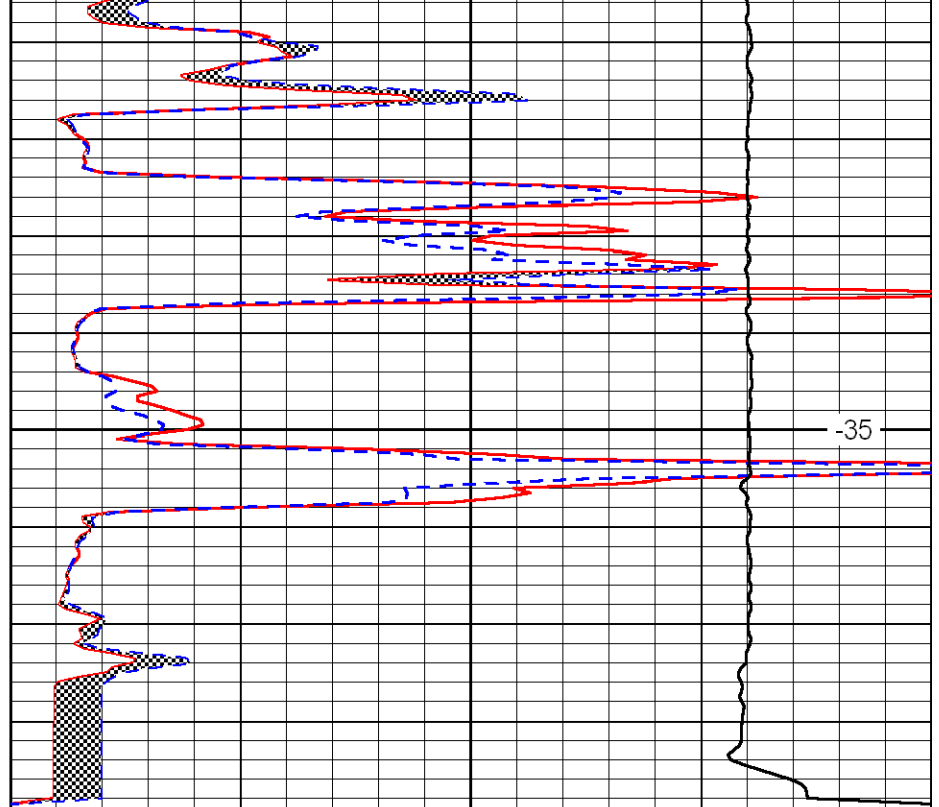
-35

-35



0	Gamma Ray	150
6	MCAL (GAPI)	16
2.875	Mud Cake (GAPI)	7.875
-200	SP	0

3750



0	Micro Inverse 1 X 1	40
0	Micro Normal 2''	40
10000	Line Weight	0

LSPD