



Dual Induction Log

DIGITAL LOG (785) 625-3858

15-039-21138-00-00

API No.

Company **Prairie Fire Petroleum, LLC**

Well **Henningson #1-20**

Field **Shirley**
 County **Decatur** State **Kansas**

Location **NW SE SW**
990' FSL / 1650' FWL

Sec: **20** Twp: **2S** Rge: **26W**

Permanent Datum **Ground Level** Elevation **2631**

Log Measured From **Kelly Bushing** 8 Ft. Above Perm. Datum

Drilling Measured From **Kelly Bushing**

Other Services
 CNL / CDL
 MEL
 Elevation
 K.B. 2639
 D.F. 2631
 G.L. 2631

Date **9/18/2011**

Run Number **One**

Depth Driller **3780**

Depth Logger **3783**

Bottom Logged Interval **3782**

Top Log Interval **250**

Casing Driller **8.625 @ 254**

Casing Logger **264**

Bit Size **7.875**

Type Fluid in Hole **Chemical**

Salinity, ppm CL **1700**

Density / Viscosity **9.5 57**

pH / Fluid Loss **11.5 8.8**

Source of Sample **Flowline**

Rm @ Meas. Temp **2.00 @ 80**

Rmf @ Meas. Temp **1.50 @ 80**

Rmc @ Meas. Temp **2.70 @ 80**

Source of Rmf / Rmc **Charts**

Rm @ BHT **1.41 @ 114**

Operating Rig Time **3 Hours**

Max Rec. Temp. F **114**

Equipment Number **15**

Location **Hays**

Recorded By **R. Barnhart**

Witnessed By **Doug Frickey**

<<< Fold Here >>>

All interpretations are opinions based on inferences from electrical or other measurements and we cannot and do not guarantee the accuracy or correctness of any interpretation, and we shall not, except in the case of gross or willful negligence on our part, be liable or responsible for any loss, costs, damages, or expenses incurred or sustained by anyone resulting from any interpretation made by any of our officers, agents or employees. These interpretations are also subject to our general terms and conditions set out in our current Price Schedule.

Comments

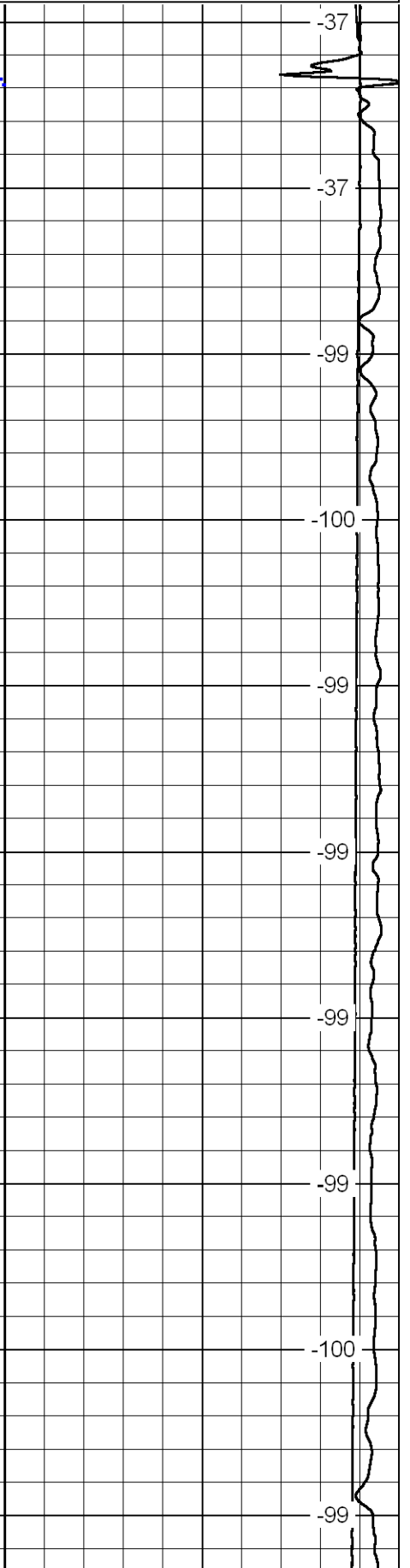
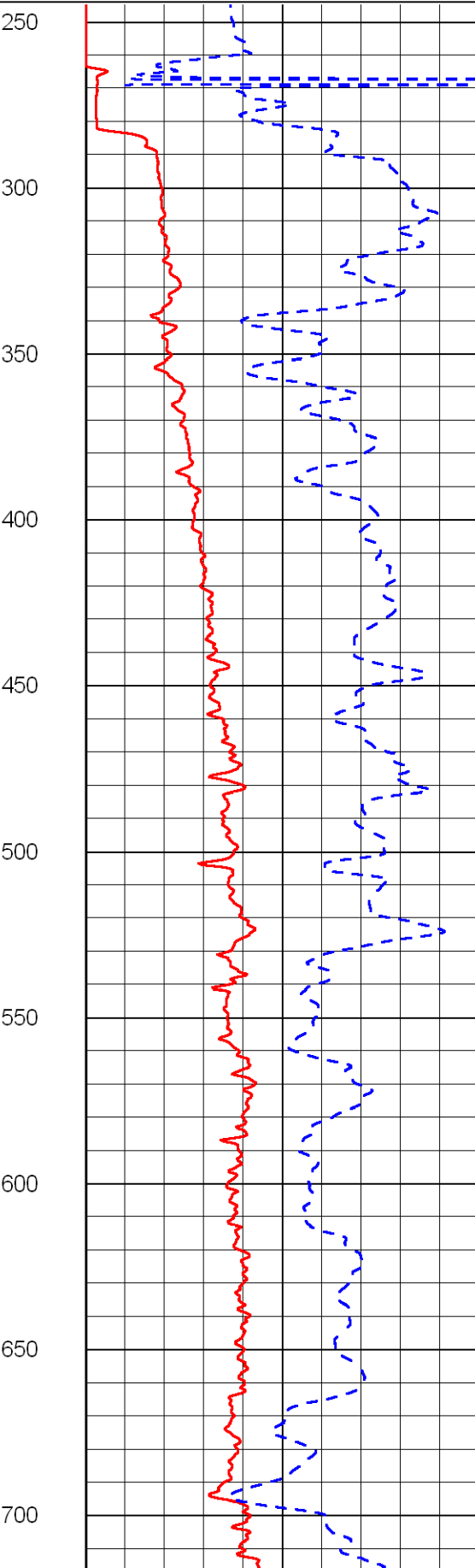
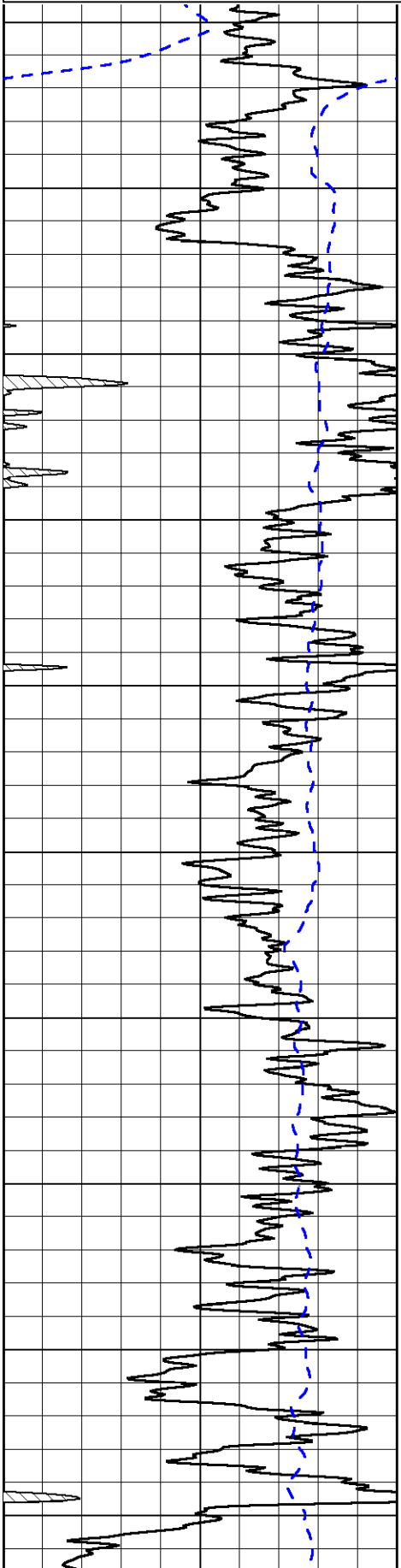
Thank you for using Log-Tech, Inc.
 (785) 625-3858
 Norcatur, KS:
 5W to Train Tracks, 2N
 1/2E, N into

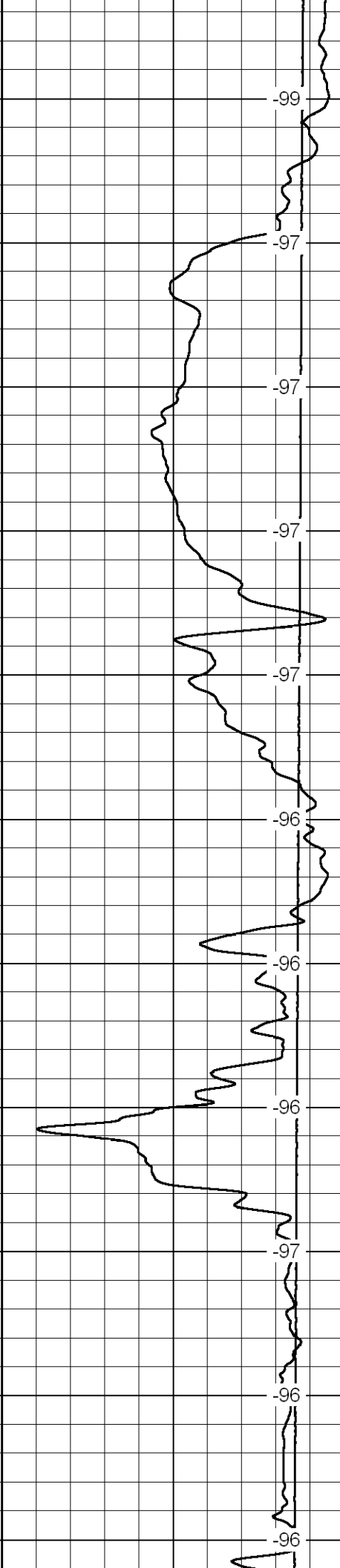
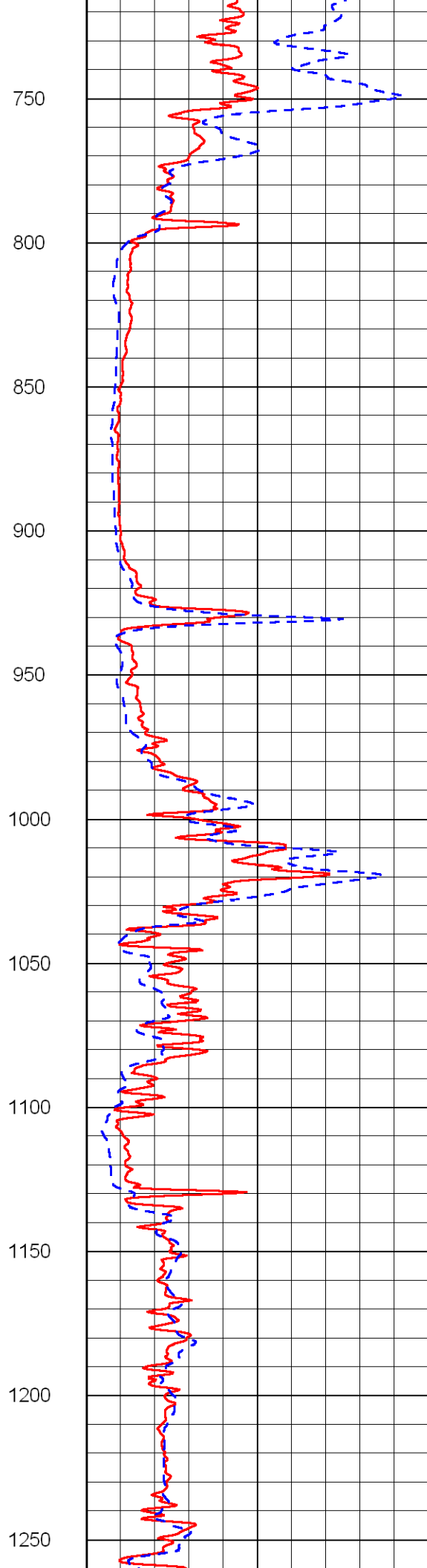
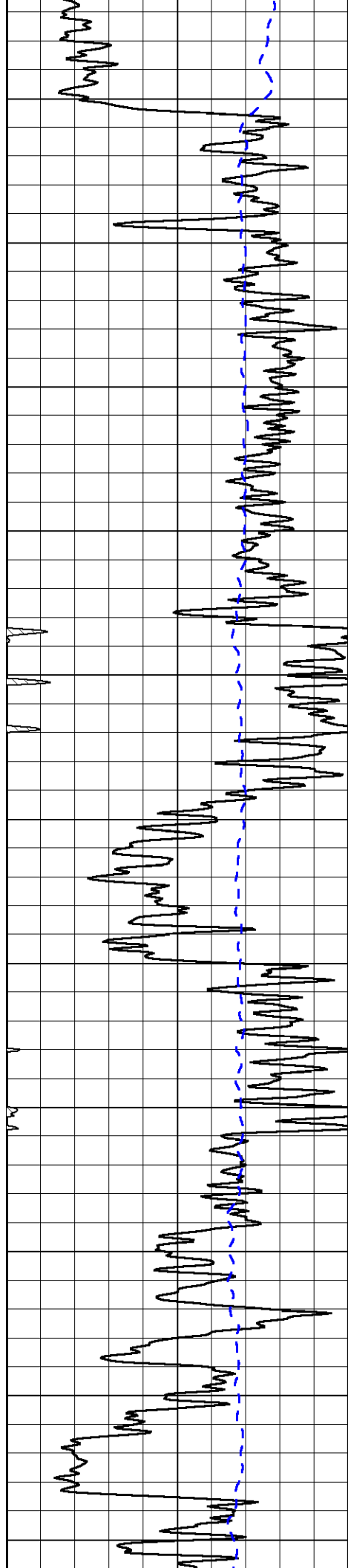
Database File: prairiefirehd.db
 Dataset Pathname: dil/prfmain
 Presentation Format: dil2in
 Dataset Creation: Sun Sep 18 22:53:51 2011
 Charted by: Depth in Feet scaled 1:600

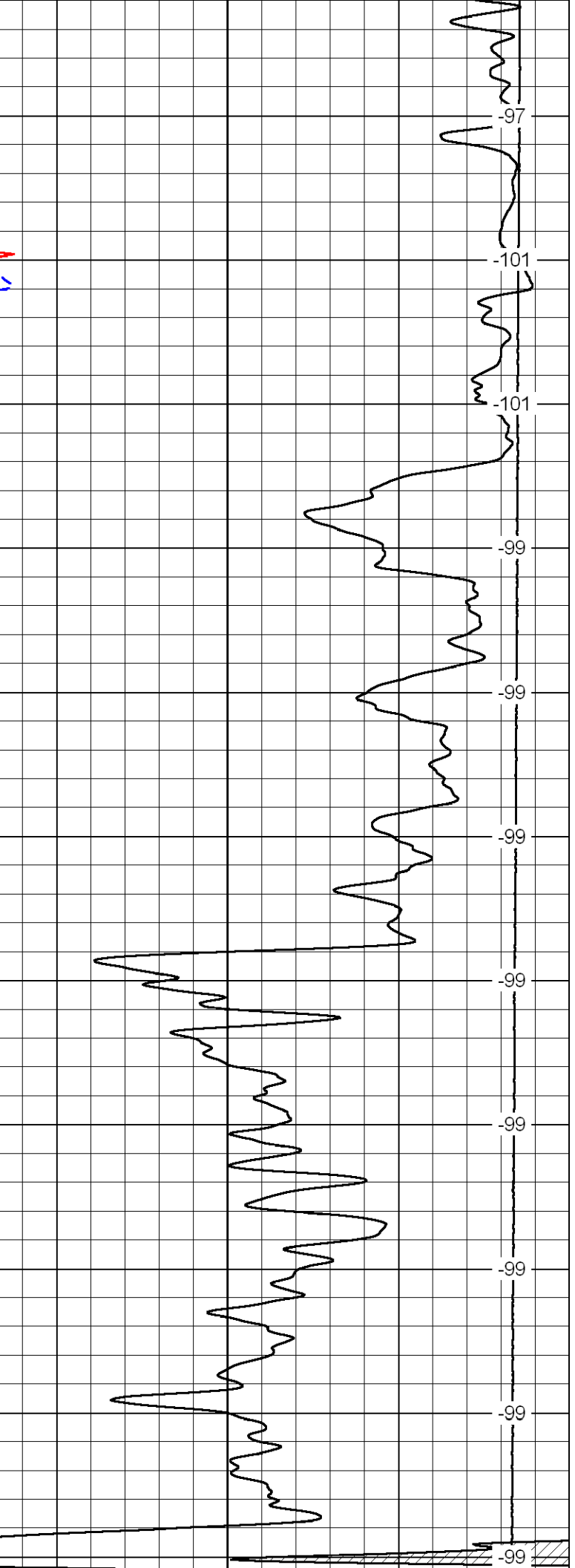
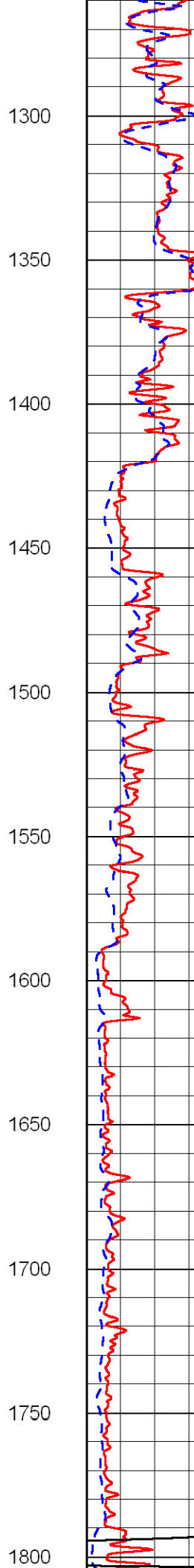
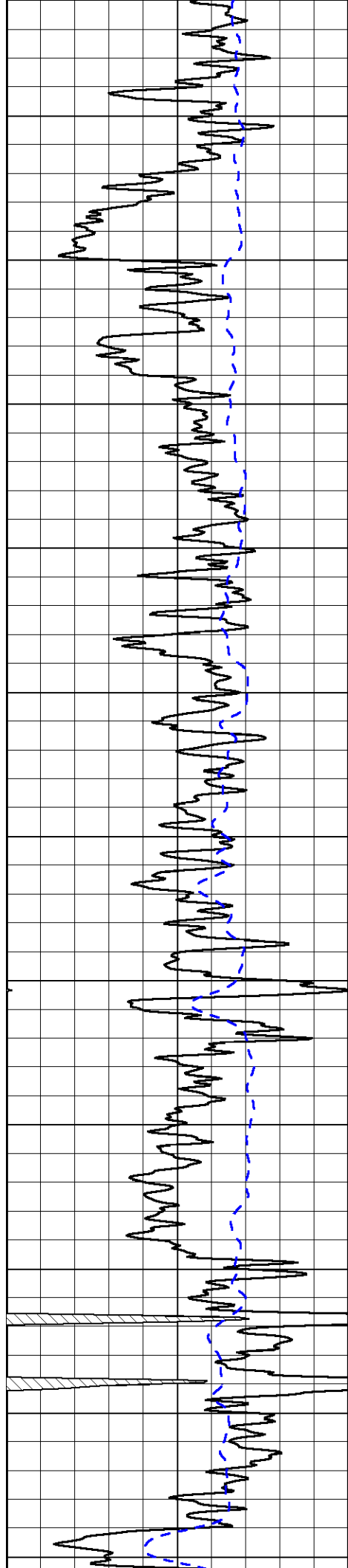
0	Gamma Ray	150
-200	SP	0

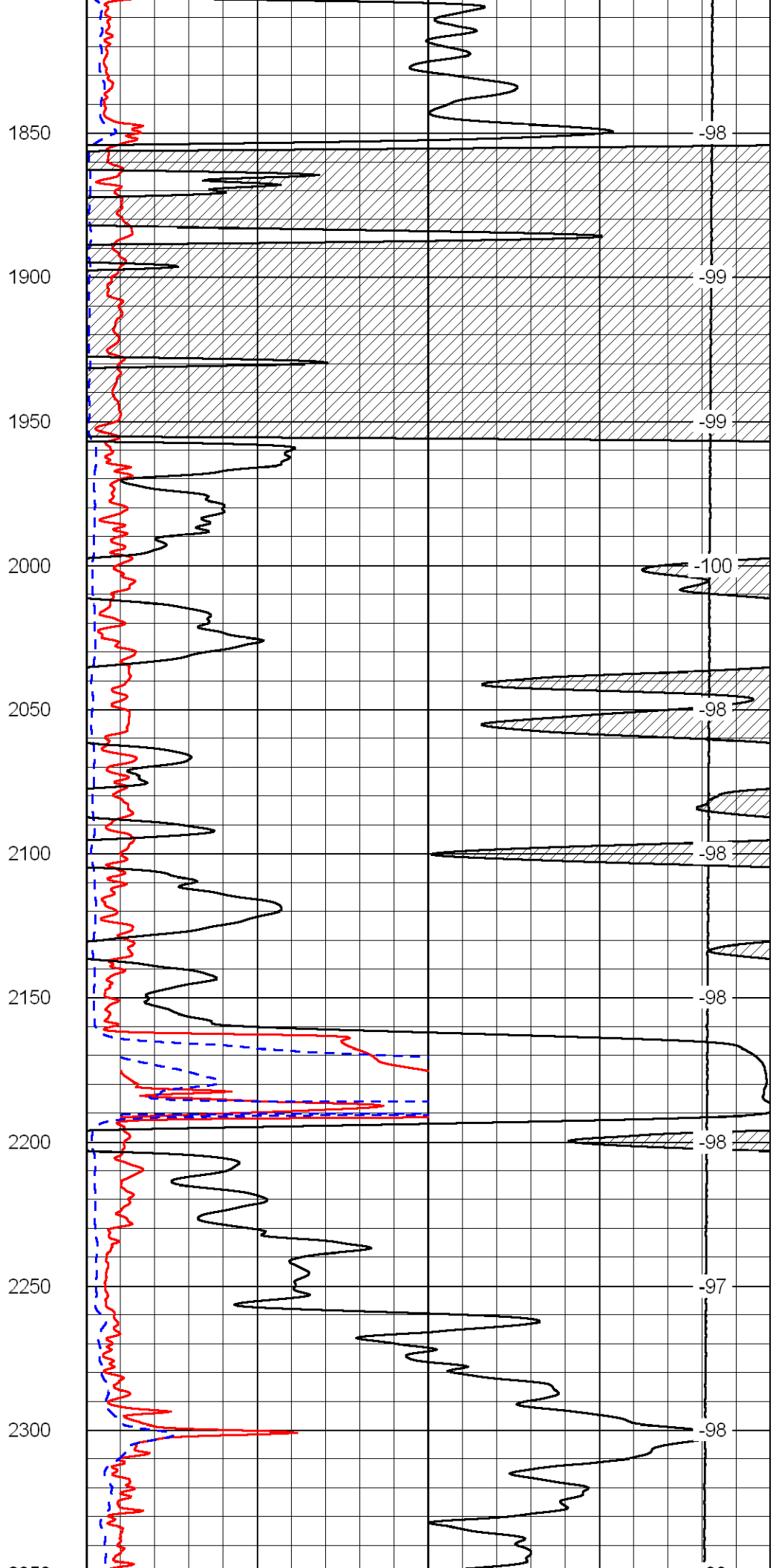
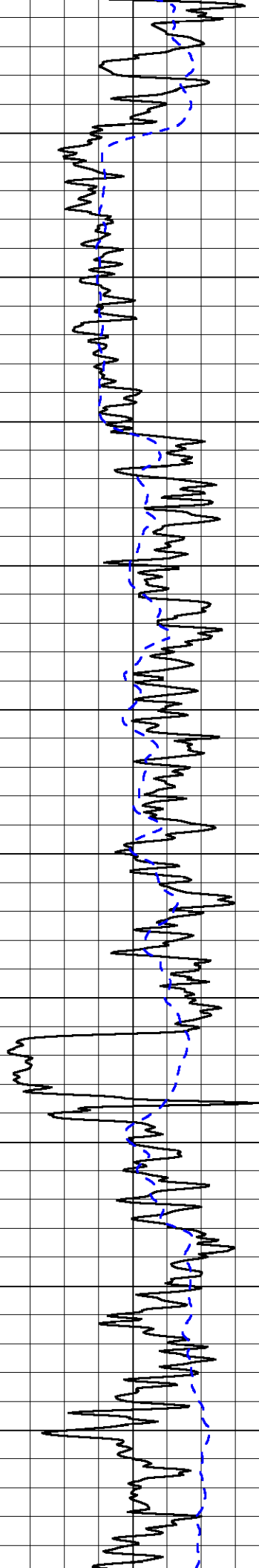
0	Shallow Resistivity	50
0	Deep Resistivity	50
1000	Conductivity	0
15000	Line Tension	0

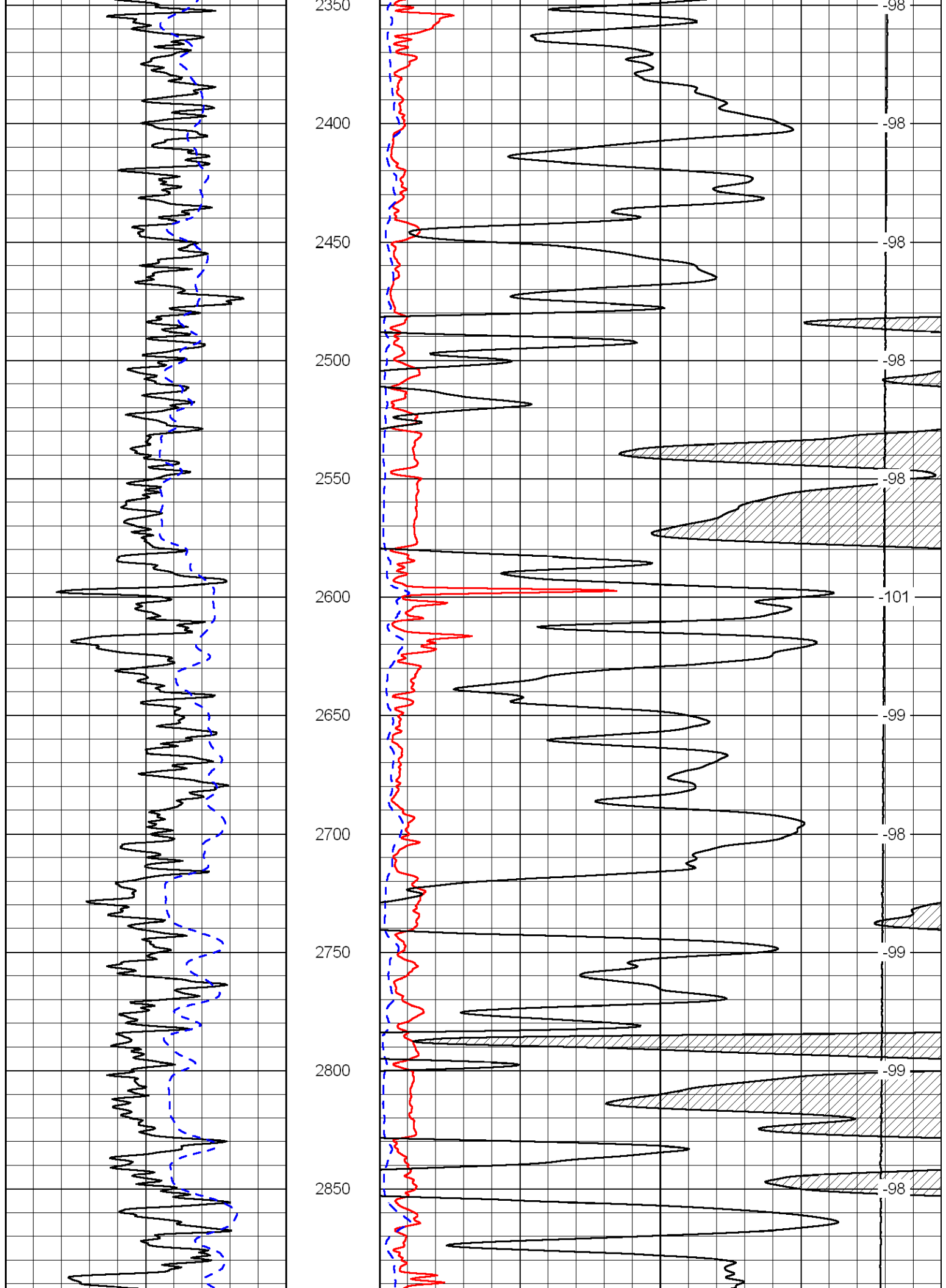
50	Shallow Resistivity	500
50	Deep Resistivity	500

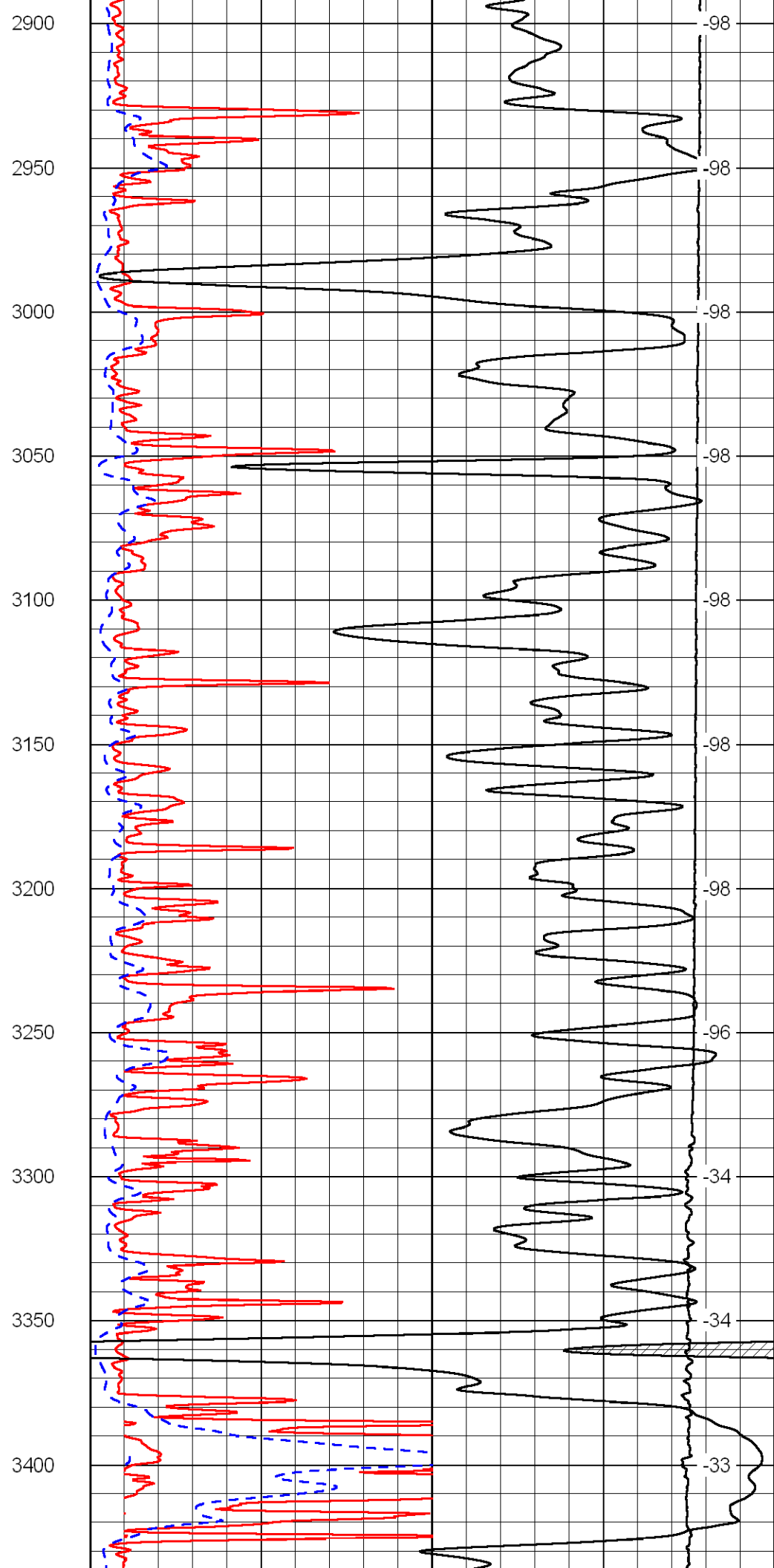
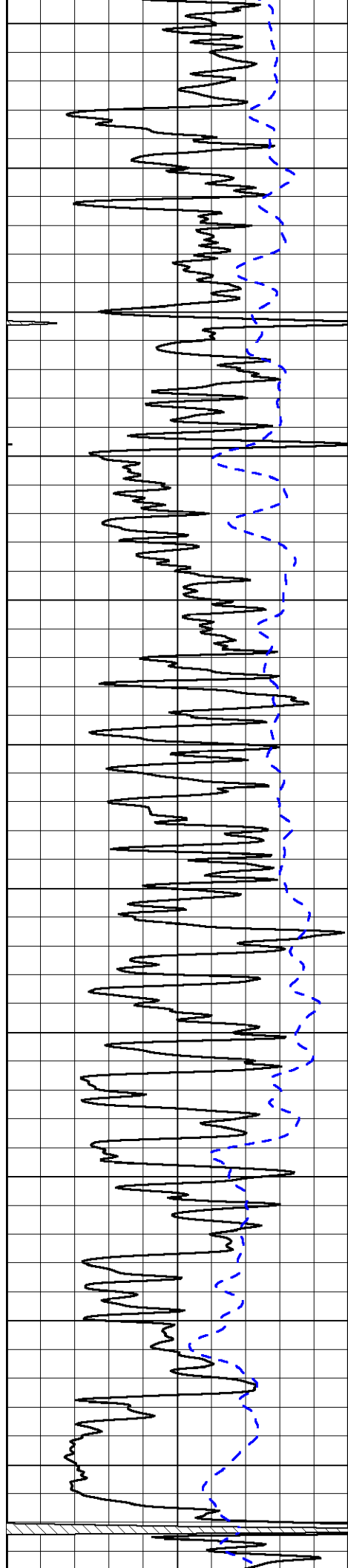


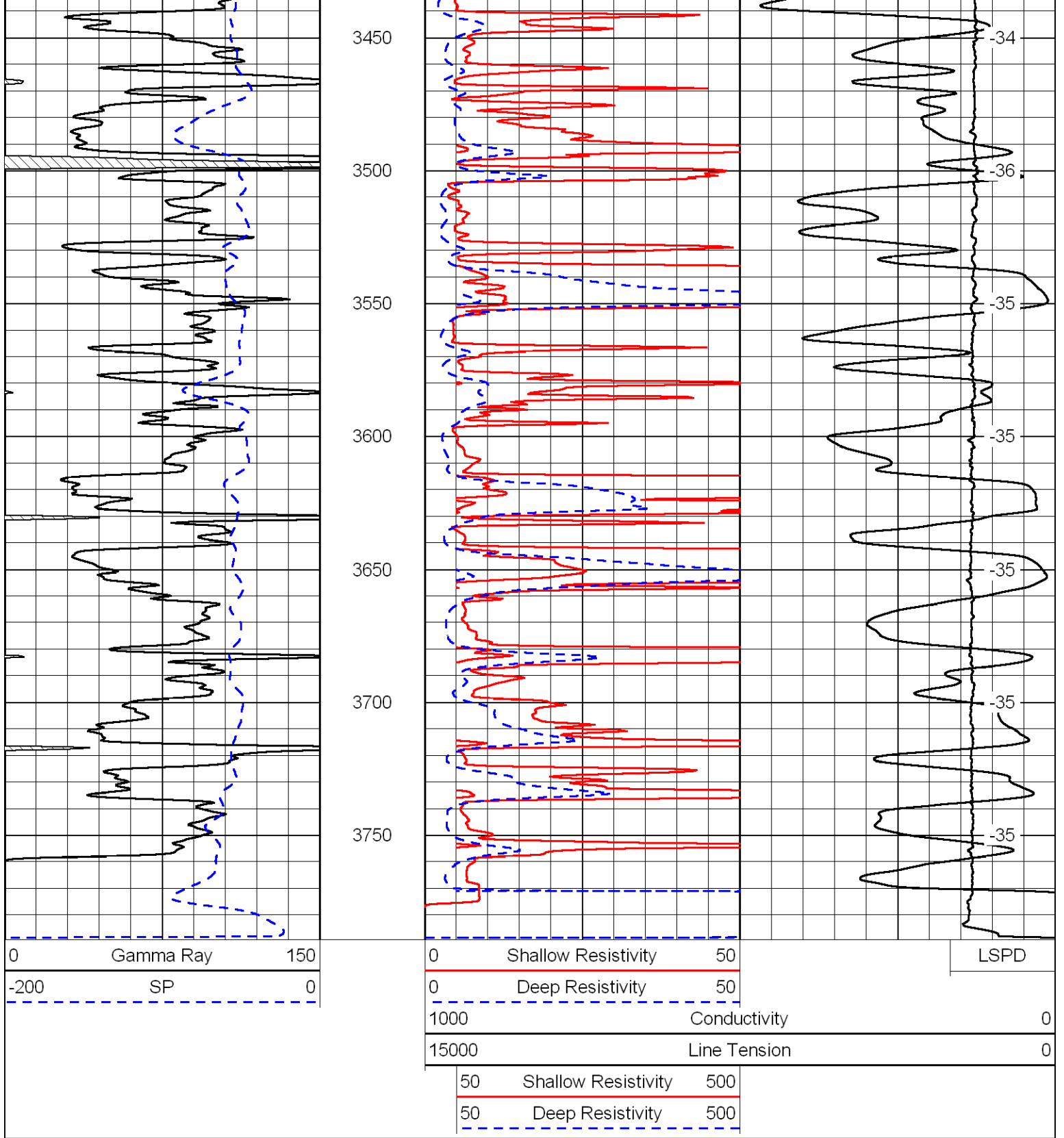




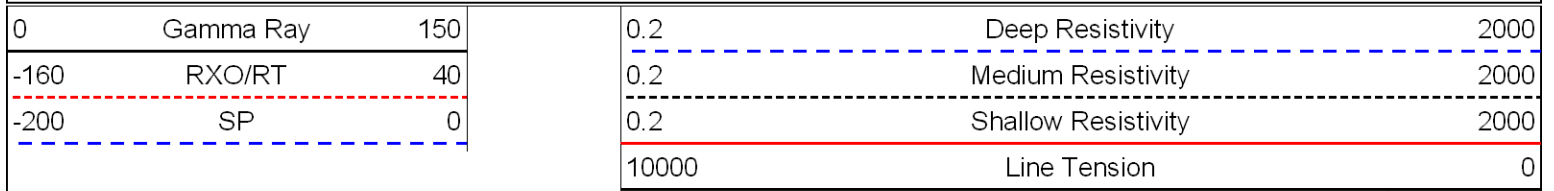


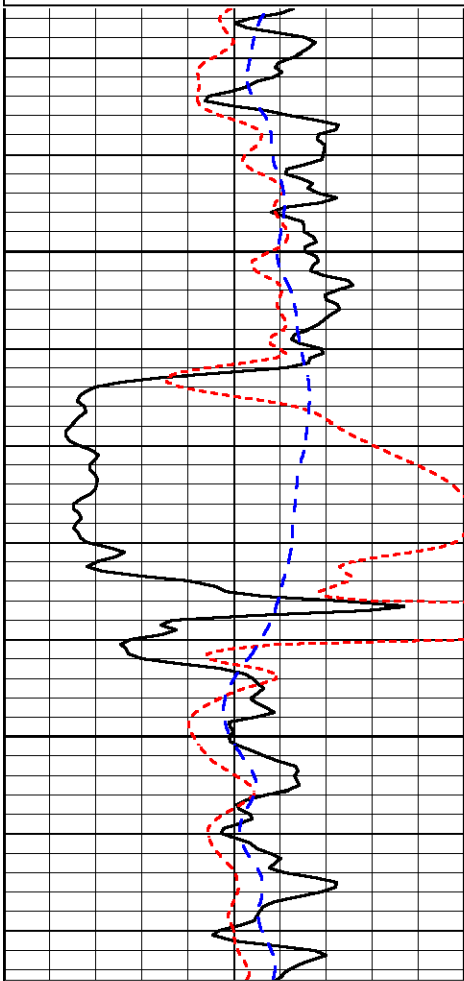






Database File: prairiefirehd.db
 Dataset Pathname: dil/prfmain
 Presentation Format: dil
 Dataset Creation: Sun Sep 18 22:53:51 2011
 Charted by: Depth in Feet scaled 1:240

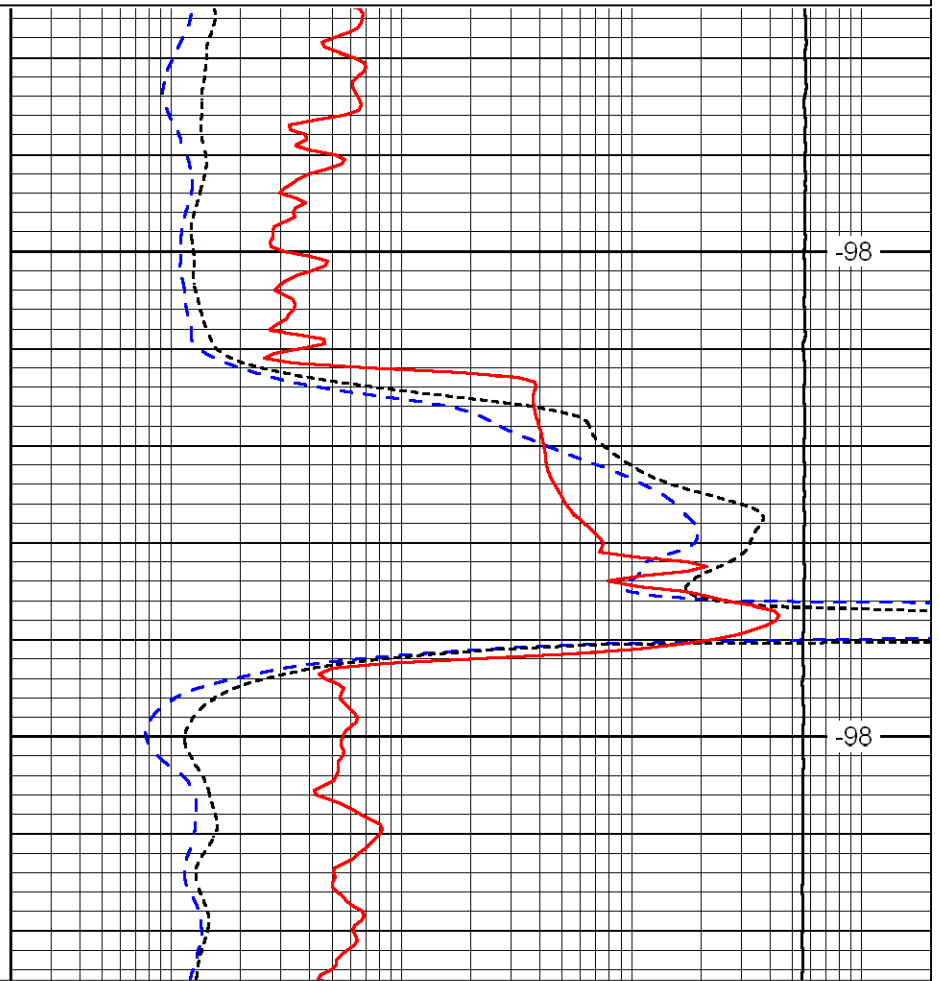




2150

2200

0	Gamma Ray	150
-160	RXO/RT	40
-200	SP	0



-98

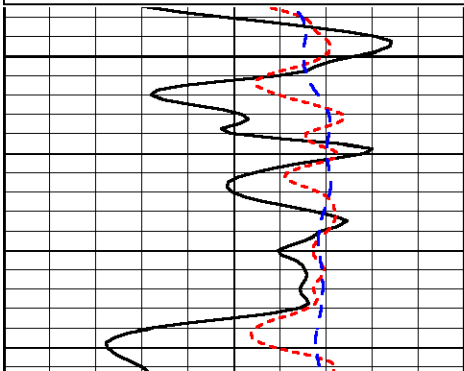
-98

0.2	Deep Resistivity	2000
0.2	Medium Resistivity	2000
0.2	Shallow Resistivity	2000
10000	Line Tension	0

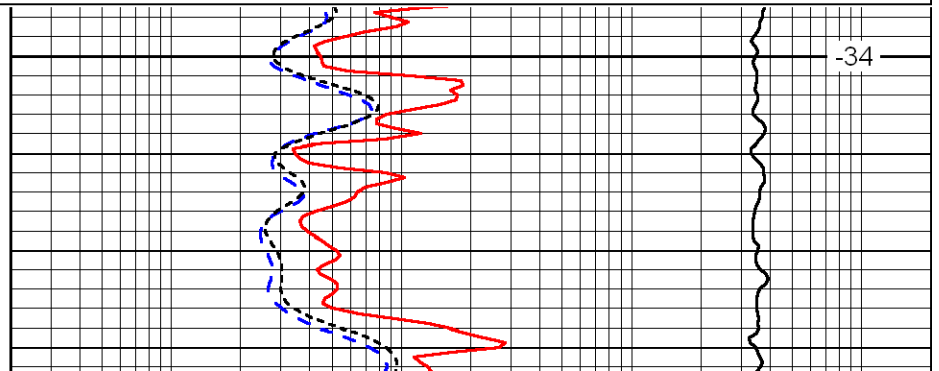
Database File: prairiefirehd.db
 Dataset Pathname: dil/prfmain
 Presentation Format: dil
 Dataset Creation: Sun Sep 18 22:53:51 2011
 Charted by: Depth in Feet scaled 1:240

0	Gamma Ray	150
-160	RXO/RT	40
-200	SP	0

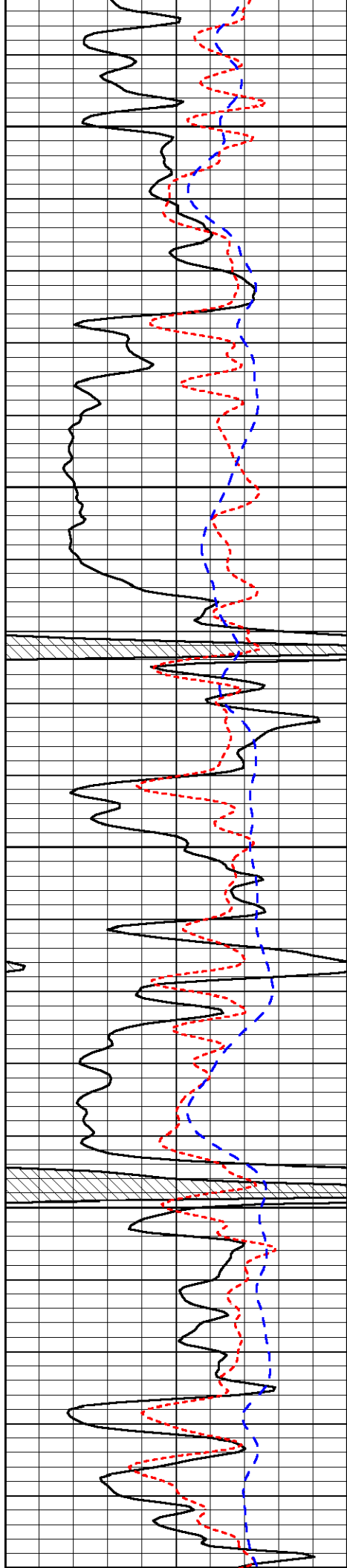
0.2	Deep Resistivity	2000
0.2	Medium Resistivity	2000
0.2	Shallow Resistivity	2000
10000	Line Tension	0



3300



-34



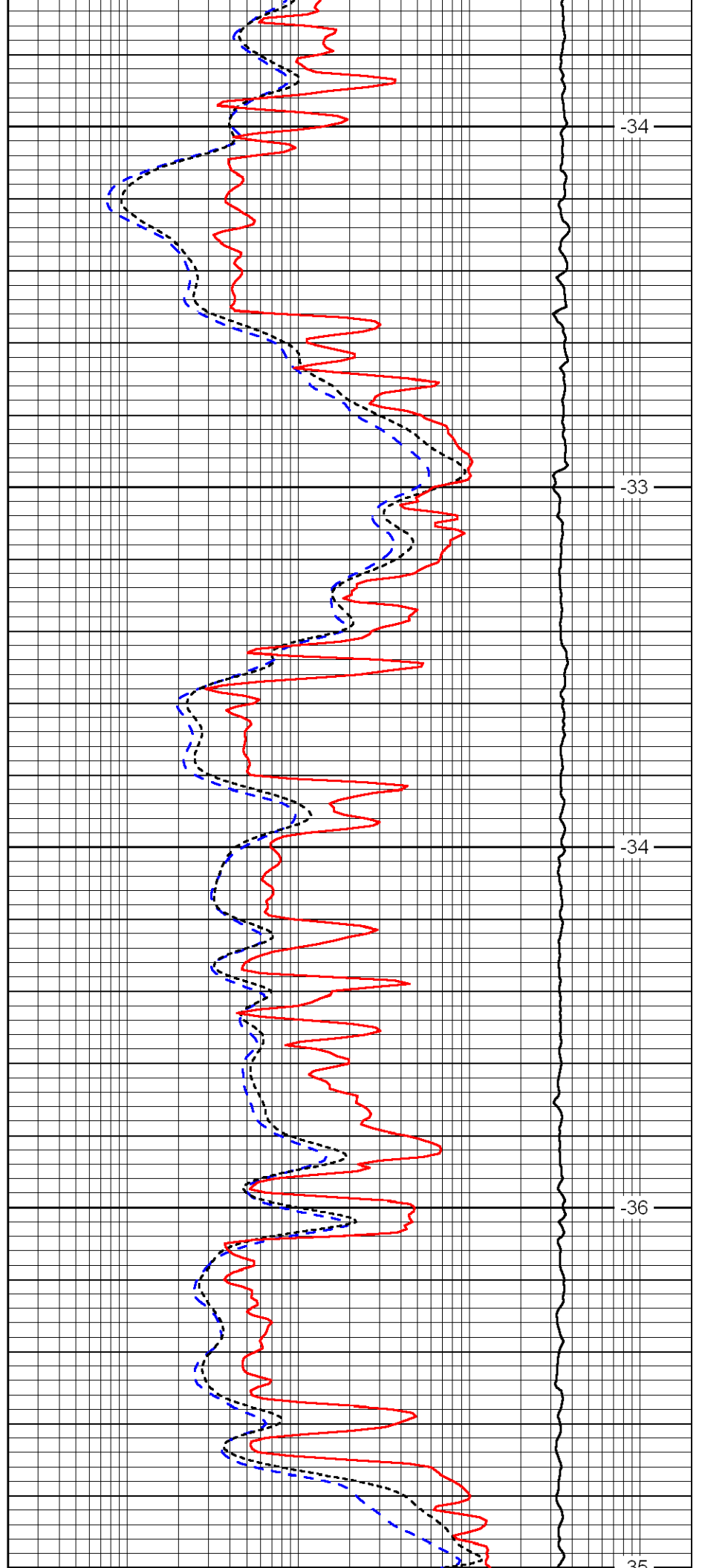
3350

3400

3450

3500

3550



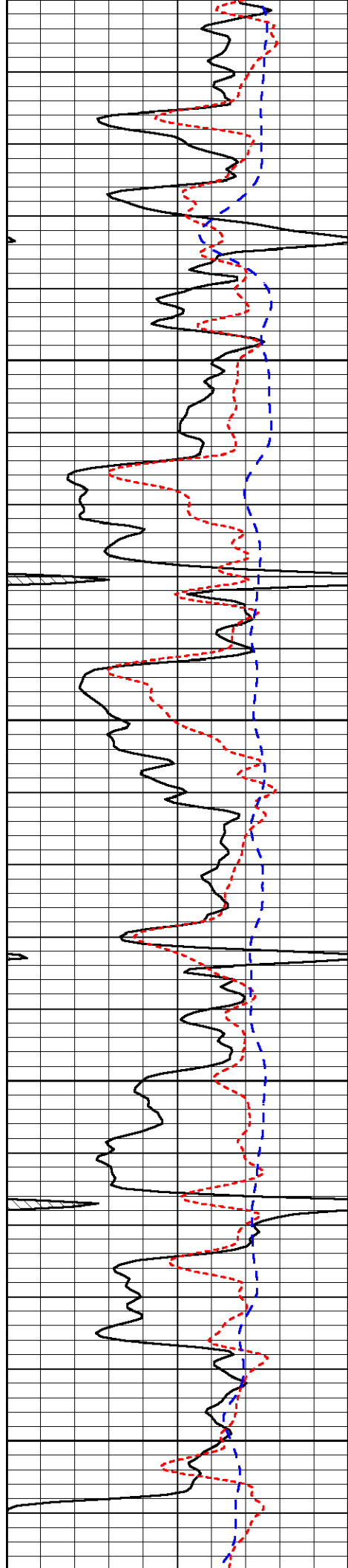
-34

-33

-34

-36

-35



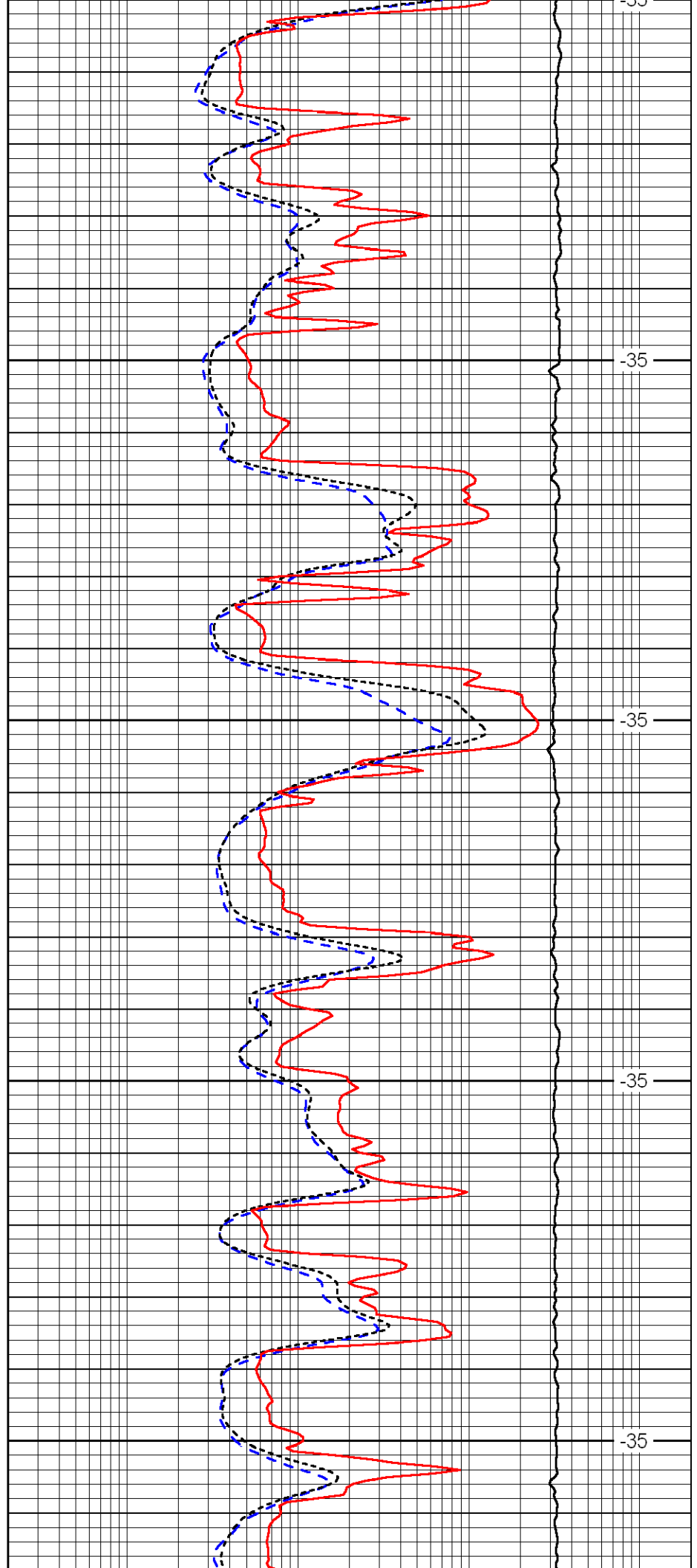
3550

3600

3650

3700

3750



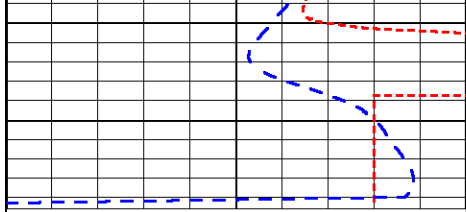
-35

-35

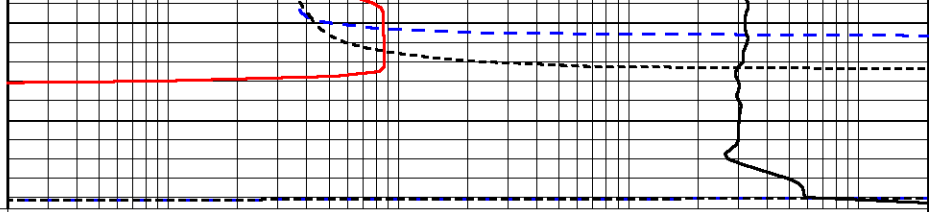
-35

-35

-35



0	Gamma Ray	150
-160	RXO/RT	40
-200	SP	0



0.2	Deep Resistivity	2000
0.2	Medium Resistivity	2000
0.2	Shallow Resistivity	2000
10000	Line Tension	0

LSPD