



MIDWEST SURVEYS
 LOGGING - PERFORATING - CONSULTING SERVICES
 P.O. Box 66, Osawatomie, KS 66064
 913 / 755 - 2128

GAMMA RAY / NEUTRON / CCL

File No. _____

Company Enerlex Kansas, Inc.

Well Johnston No. BSI - JO-2

Field Paola / Rantoul

County Franklin

State Kansas

Location 1905 FSL & 1110' FEL

Other Services Perforate

Sec. 17 Twp. 18S Rge. 21E

Permanent Datum GL Elevation NA

Log Measured From D.F. NA

Drilling Measured From G.L. NA

Date 6-29-2011

Run Number One

Depth Driller 861.0

Depth Logger 845.5

Bottom Logged Interval 843.5

Top Log Interval 20.0

Fluid Level Full

Type Fluid Water

Density / Viscosity NA

Salinity - PPM Cl NA

Max Recorded Temp NA

Estimated Cement Top 0.0

Equipment No. Location 104 Osawatomie

Recorded By Gary Winkisch

Witnessed By Jay Schindler

BOREHOLE RECORD

R/N No. BIT FROM TO SIZE WGT. FROM TO

One 9.875" 0.0 21.4 7.00" 0.0 21.4

Two 5.825" 21.4 891.0 2.875" 0.0 849.6

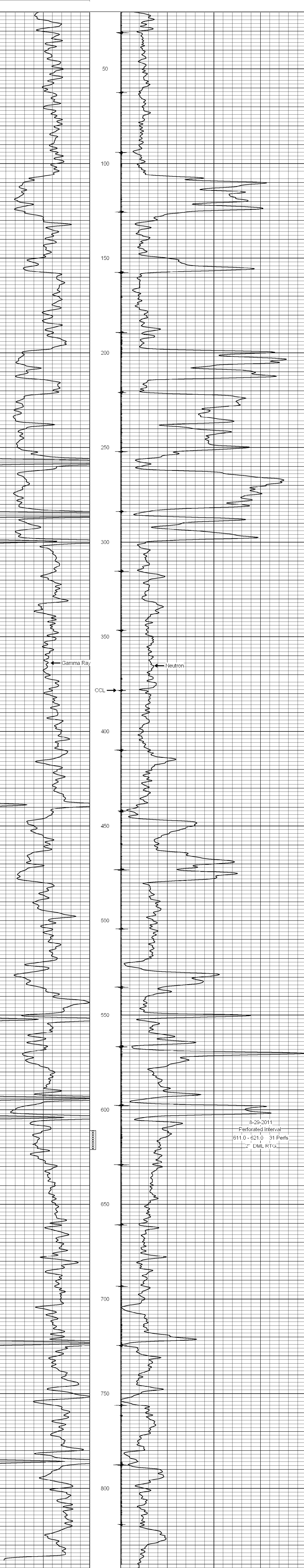
<<< Fold Here >>>

All interpretations are opinions based on inferences from electrical or other measurements and we cannot and do not guarantee the accuracy or correctness of any interpretation, and we shall not, except in the case of gross or willful negligence on our part, be liable or responsible for any loss, costs, damages, or expenses incurred or sustained by anyone resulting from any interpretation made by any of our officers, agents or employees. These interpretations are also subject to our general terms and conditions set out in our current Price Schedule.

Comments

Drilling Contractor :
McGown Drilling, Inc.

Database File: jhn2bsi.db
 Dataset Pathname: pass1
 Presentation Format: gr-n-ccl
 Dataset Creation: Wed Jun 29 13:46:23 2011 by Log Warrior Version 6.6
 Charted by: Depth in Feet scaled 1:240



8-29-2011
 Perforated Interval
 611.0 - 621.0 31 Perfs
 2" DML RTG

0 Gamma Ray 150 100 Neutron 1800
 150 Gamma Ray 300