



SUPERIOR
Hays,
Kansas

MICRO
LOG

Company PIONEER RESOURCES
Well KNOPP #3
Field WILDCAT
County LOGAN
State KANSAS

Company PIONEER RESOURCES
Well KNOPP #3
Field WILDCAT
County LOGAN
State KANSAS

Location: API # : 15-109-21016-0000
SEC 13 TWP 14S RGE 32W
330' FSL & 330' FEL
Permanent Datum GROUND LEVEL Elevation 2780
Log Measured From KELLY BUSHING 5' A.G.L.
Drilling Measured From KELLY BUSHING
Other Services CDL/CNL DIL
Elevation K.B. 2785 D.F. 2783 G.L. 2780

Date	8/4/11
Run Number	ONE
Depth Driller	4600
Depth Logger	4602
Bottom Logged Interval	4600
Top Log Interval	3500
Casing Driller	8 5/8"@218'
Casing Logger	N/A
Bit Size	7 7/8"
Type Fluid in Hole	CHEMICAL MUD
Density / Viscosity	9.3/55
pH / Fluid Loss	10.5/8.8
Source of Sample	FLOWLINE
Rm @ Meas. Temp	.580@100F
Rmt @ Meas. Temp	.435@100F
Rmc @ Meas. Temp	.698@100F
Source of Rmf / Rmc	MEASUREMENT
Rm @ BHT	.479@121F
Time Circulation Stopped	2.5 HOURS
Time Logger on Bottom	5:45 A.M.
Maximum Recorded Temperature	121F
Equipment Number	4010
Location	HAYS, KANSAS
Recorded By	JEFF LUEBBERS
Witnessed By	RICHARD BELL

<<< Fold Here >>>

All interpretations are opinions based on inferences from electrical or other measurements and we cannot and do not guarantee the accuracy or correctness of any interpretation, and we shall not, except in the case of gross or willful negligence on our part, be liable or responsible for any loss, costs, damages, or expenses incurred or sustained by anyone resulting from any interpretation made by any of our officers, agents or employees. These interpretations are also subject to our general terms and conditions set out in our current Price Schedule.

Comments

THANK YOU FOR USING SUPERIOR WELL SERVICE HAYS, KANSAS (785) 628-6395
DIRECTIONS
OAKLEY, KS. (OLD 40 & HWY 83 JUNCTION) 20S. ON HWY 83 TO "JAYHAWK RD.", 2E., N. INTO

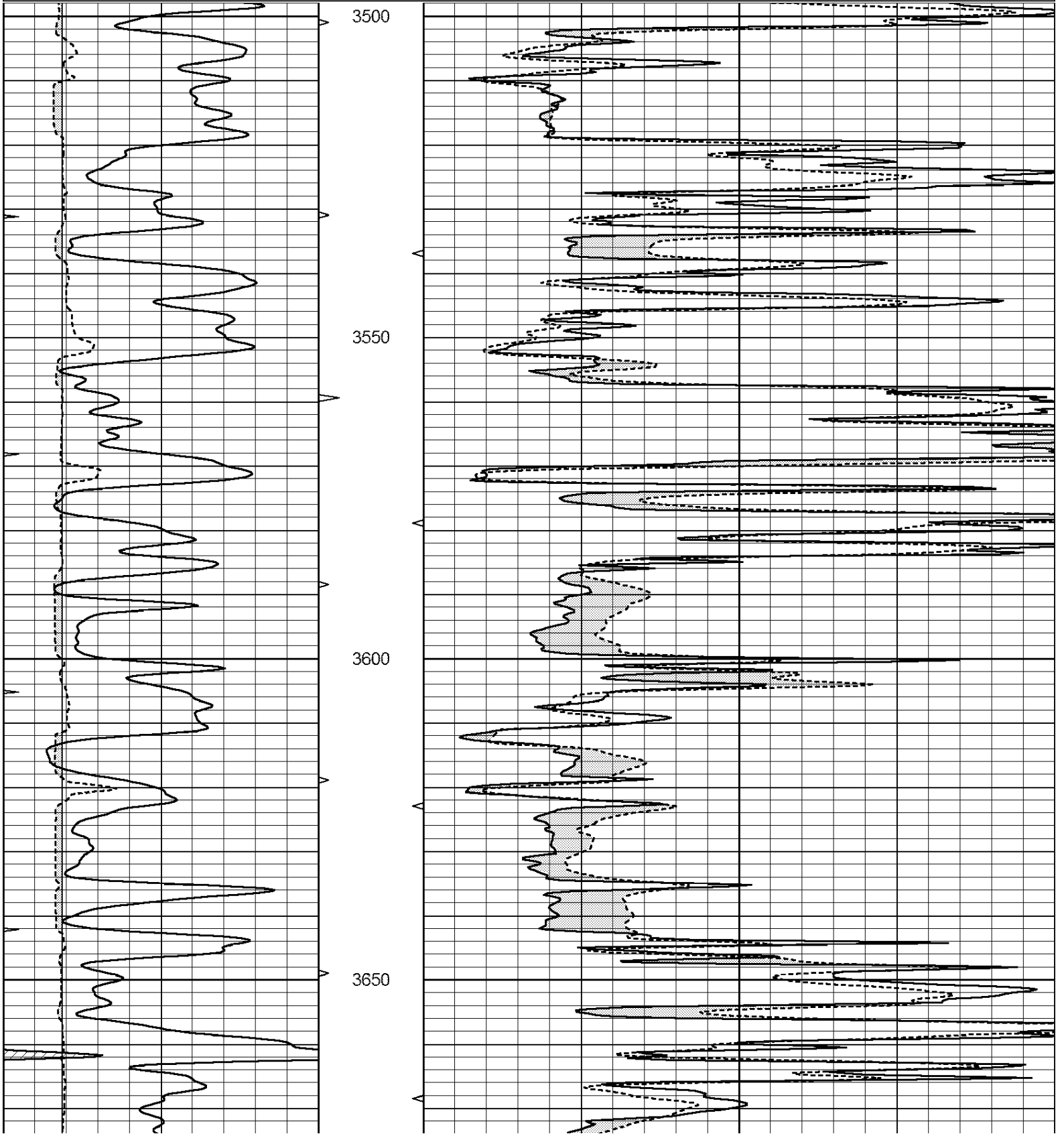


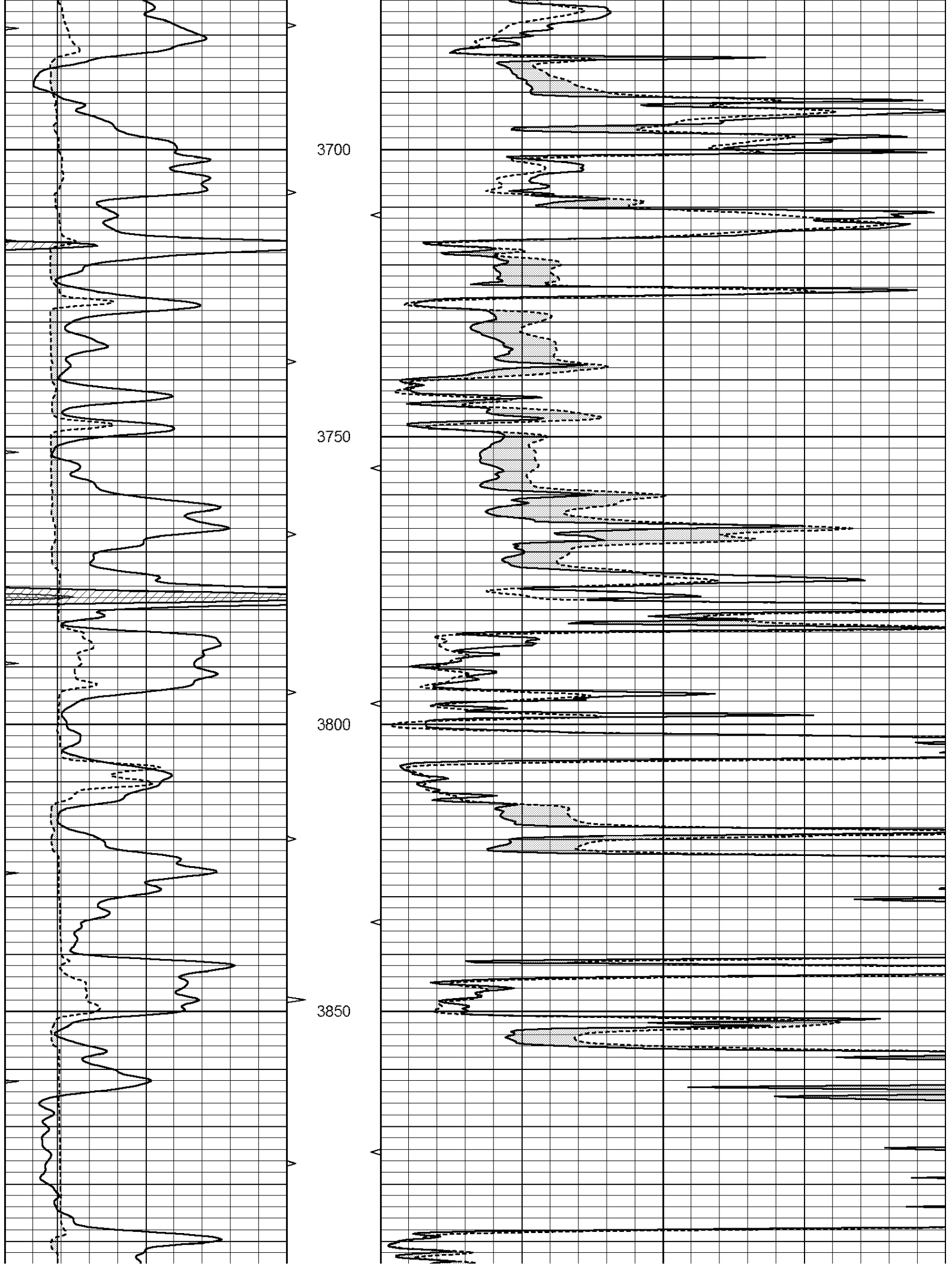
SUPERIOR
Hays,
Kansas

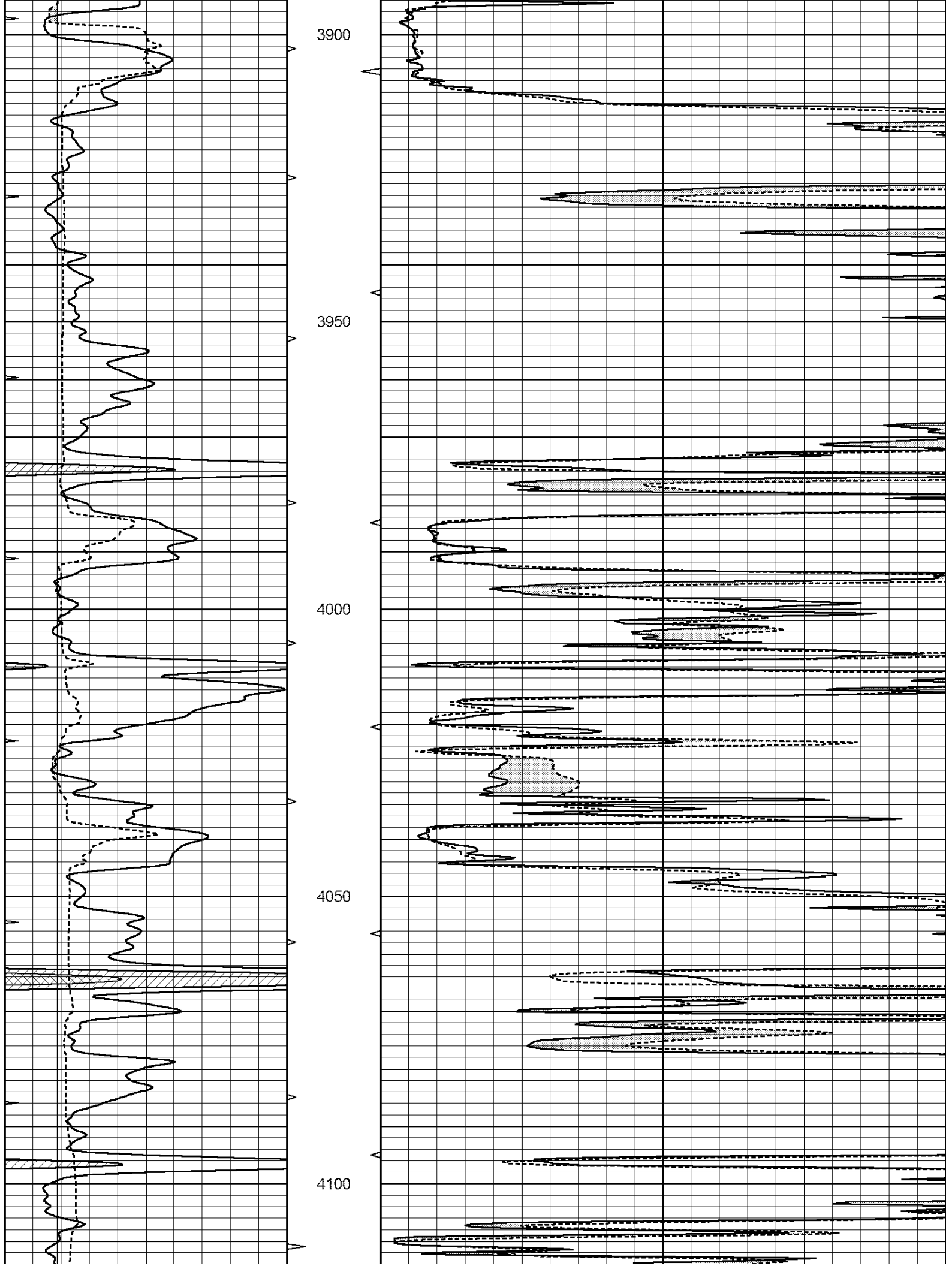
MAIN SECTION

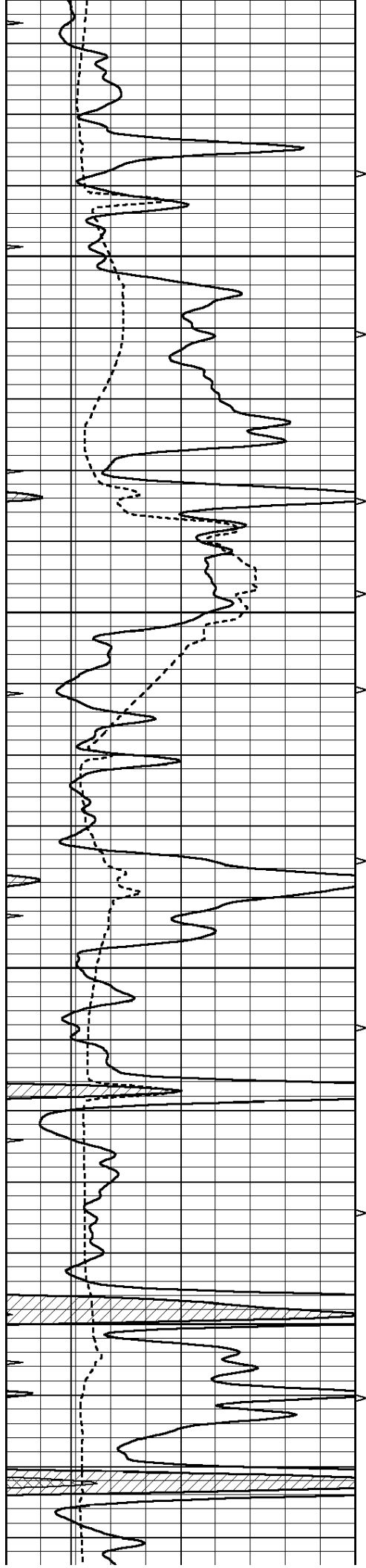
Database File: 007101ddn.db
 Dataset Pathname: pass3.7
 Presentation Format: micro
 Dataset Creation: Thu Aug 04 06:39:57 2011
 Charted by: Depth in Feet scaled 1:240

0	GAMMA RAY (GAPI)	150	ABHV	0	MEL1.5 (Ohm-m)	40
6	CALIPER (in)	16	10 (ft3)	0	MEL2.0 (Ohm-m)	40
0	MINMK	20	TBHV			
			0 (ft3)	10		







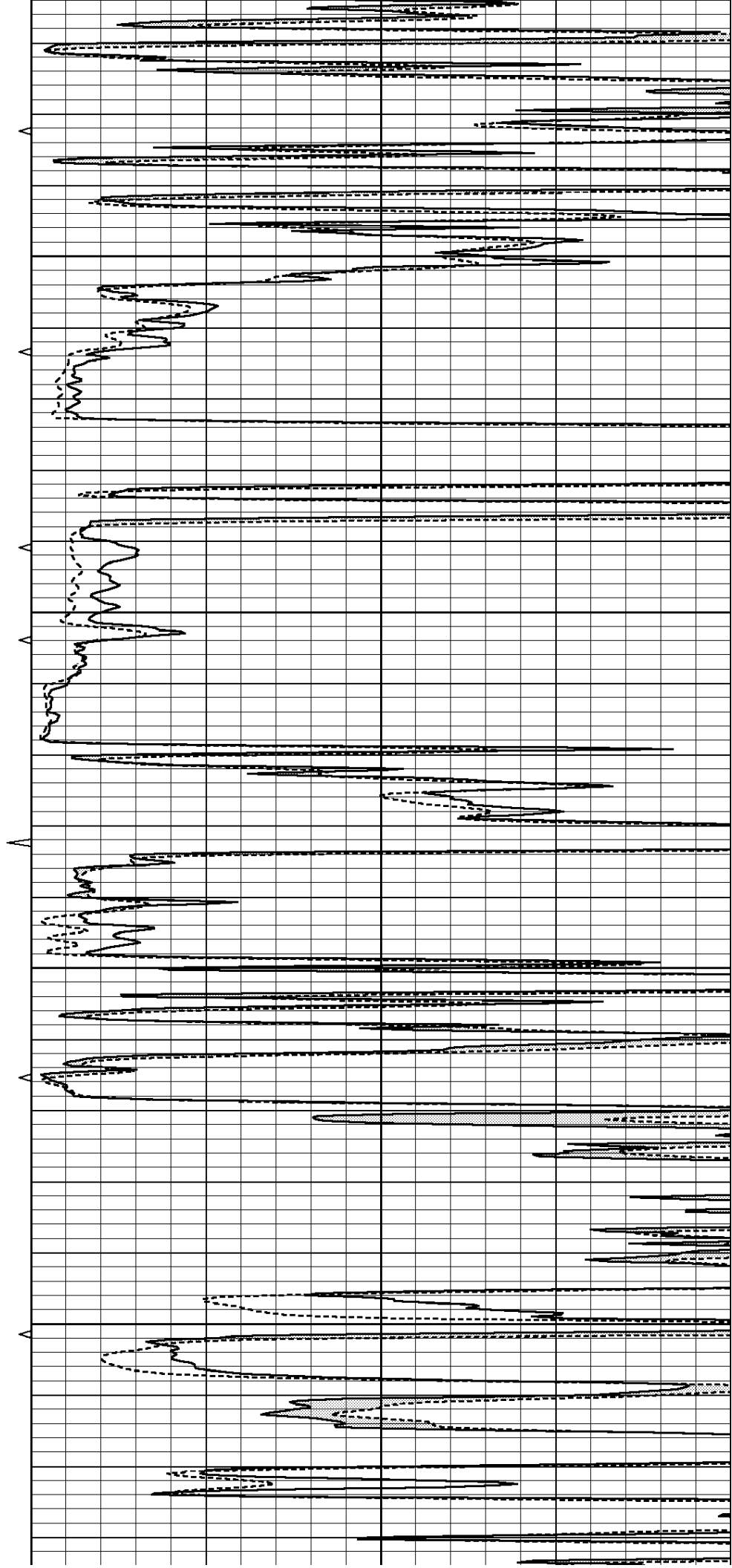


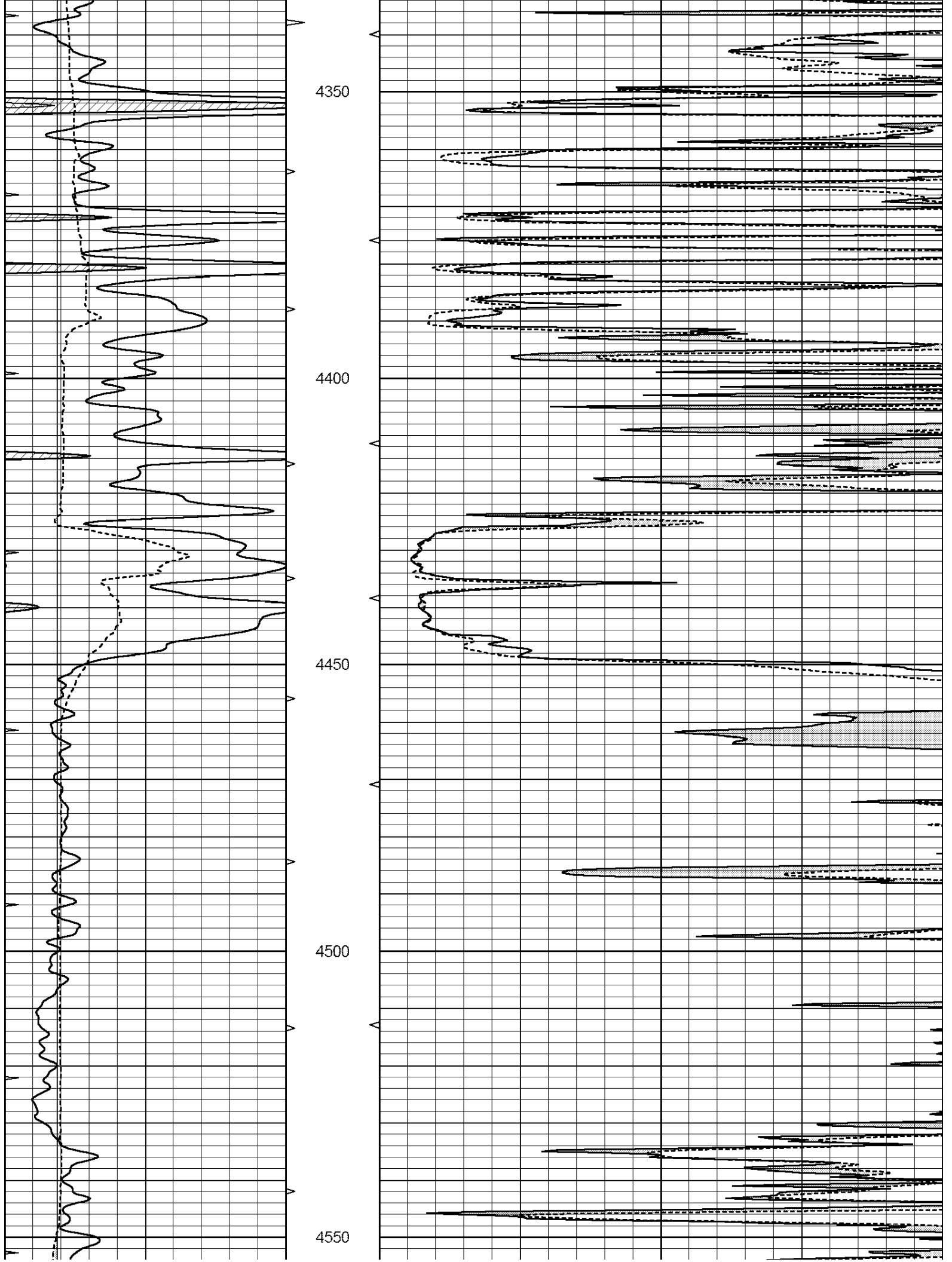
4150

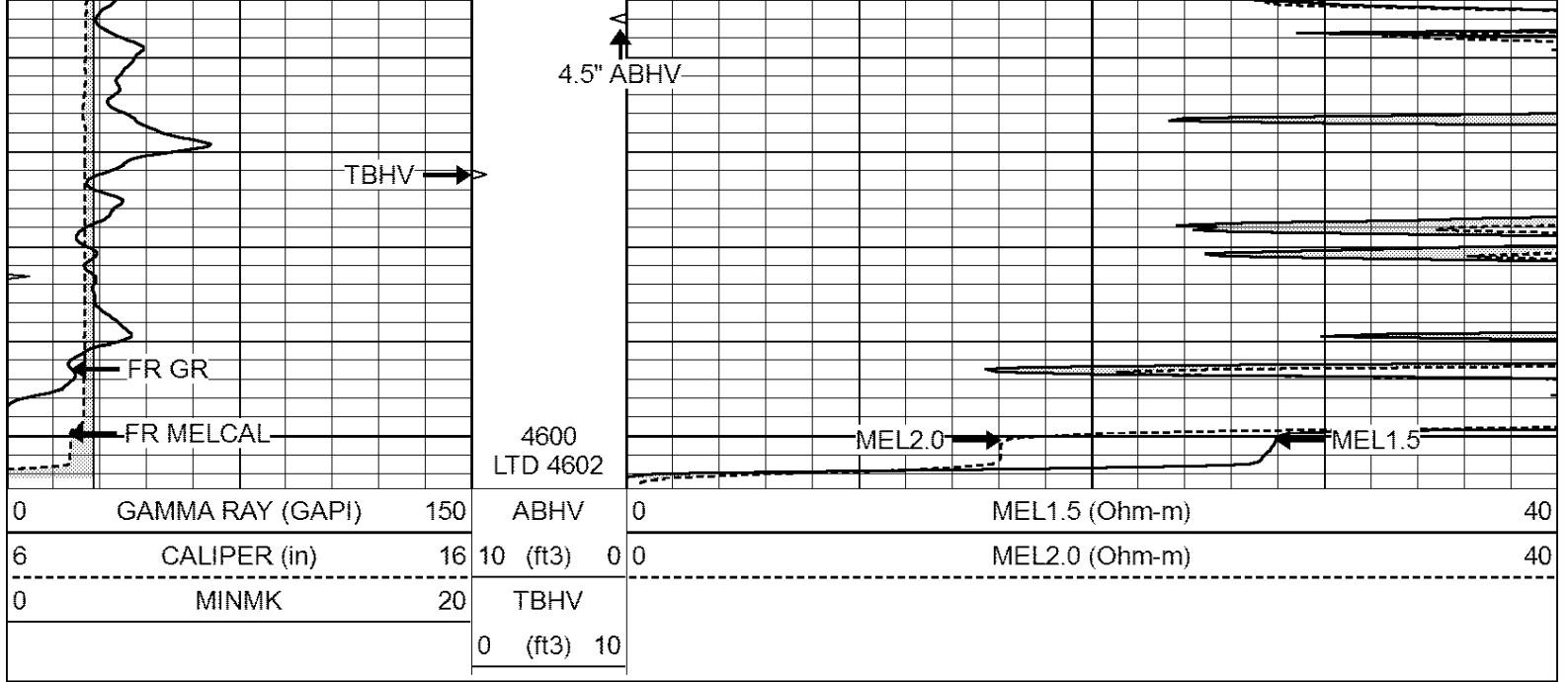
4200

4250

4300





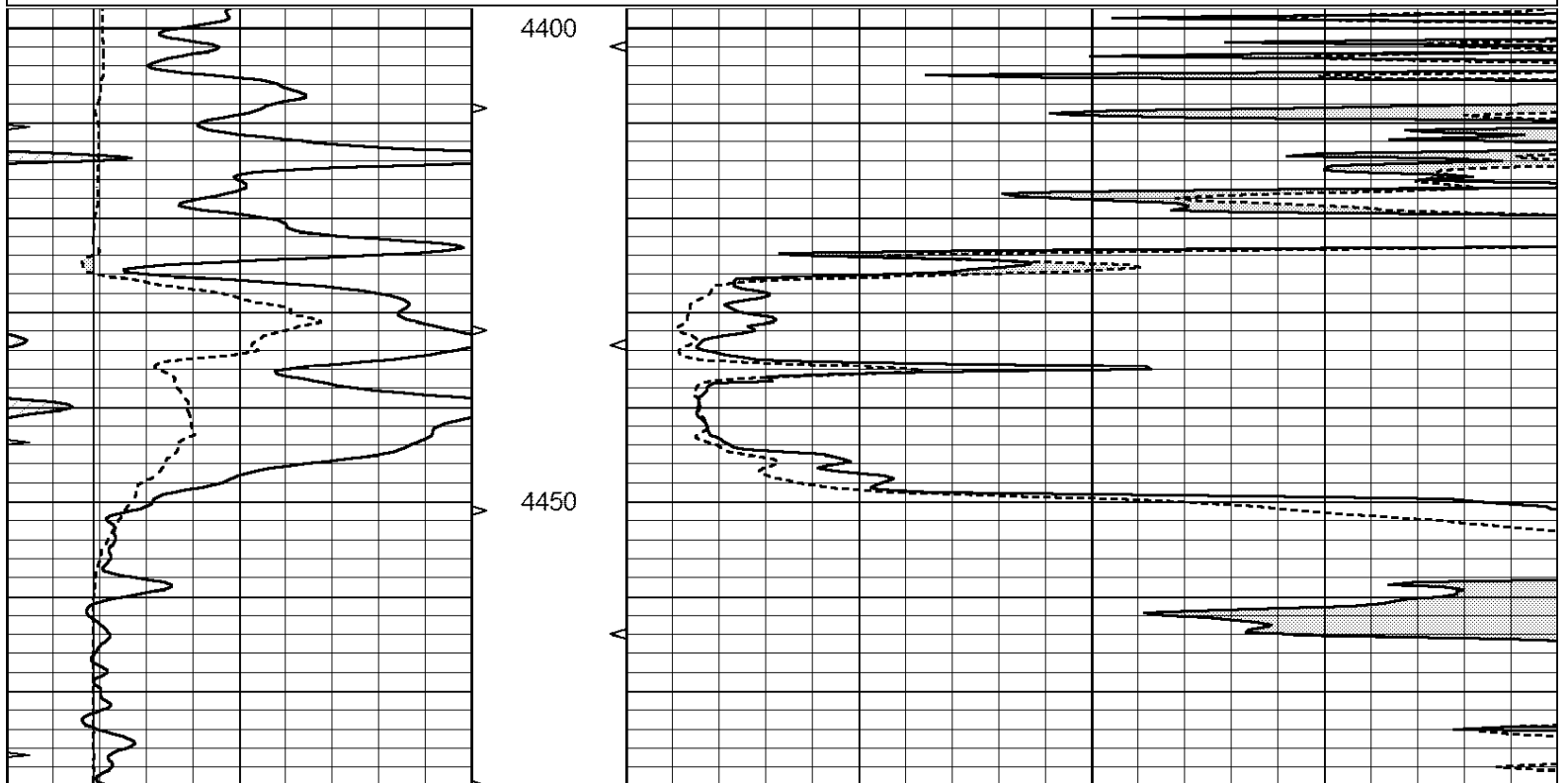


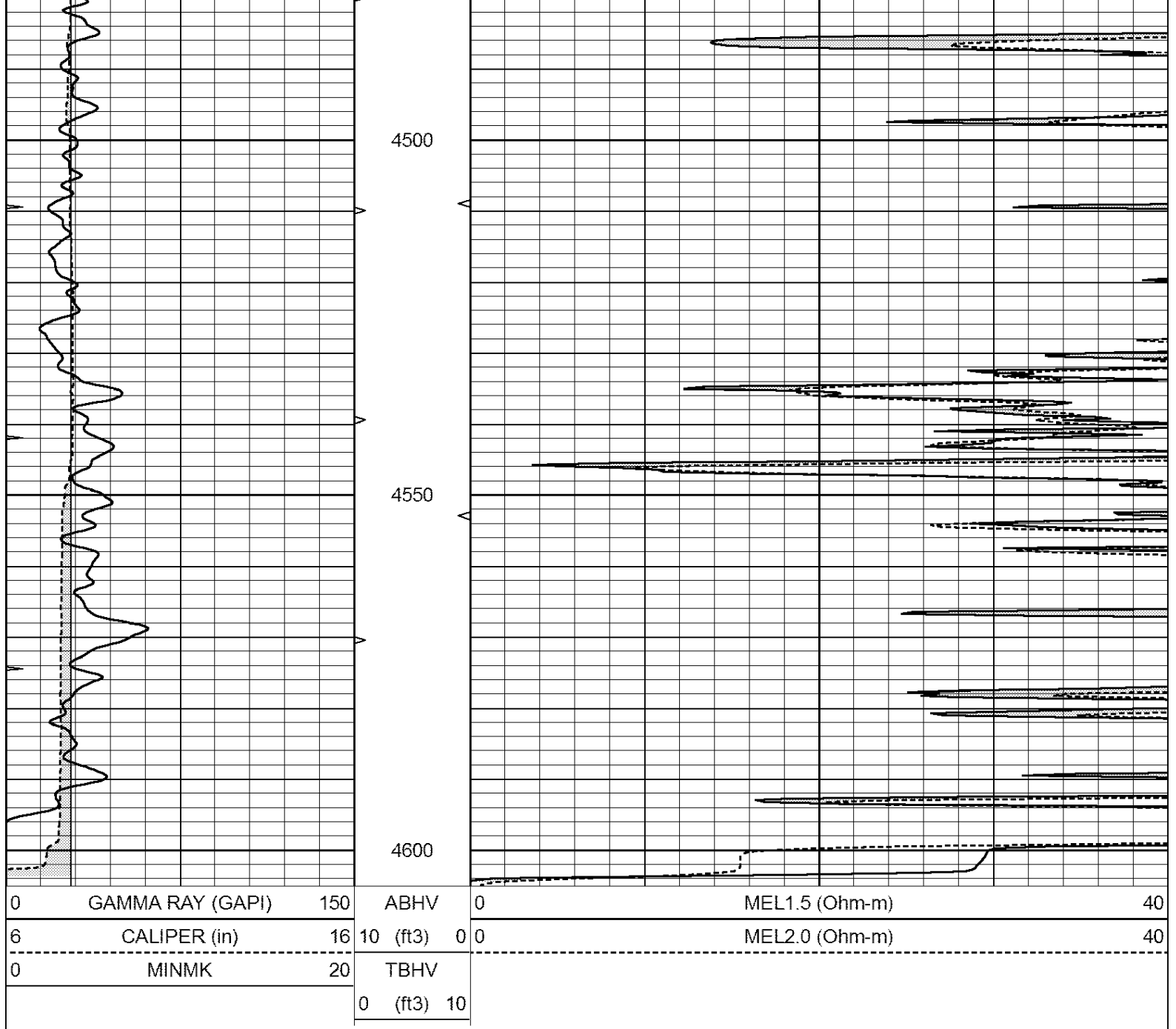
SUPERIOR
Hays,
Kansas

REPEAT SECTION

Database File: 007101ddn.db
 Dataset Pathname: pass2.5
 Presentation Format: micro
 Dataset Creation: Thu Aug 04 06:43:06 2011
 Charted by: Depth in Feet scaled 1:240

0	GAMMA RAY (GAPI)	150	ABHV	0	MEL1.5 (Ohm-m)	40
6	CALIPER (in)	16	10 (ft3)	0	MEL2.0 (Ohm-m)	40
0	MINMK	20	TBHV			
			0 (ft3)	10		





Calibration Report

Database File: 007101ddn.db
 Dataset Pathname: pass3.7
 Dataset Creation: Thu Aug 04 06:39:57 2011

MICRO Calibration Report

Serial Number: 2
 Tool Model: PROBE
 Performed: Thu Aug 04 05:51:30 2011

Caliper Calibration: Gain=3.753 Offset=3.357
 References: Low Cal 7.600 High Cal 14.000
 Readings: 1.130 2.835

1.5" Calibration: Gain=33.000 Offset=0.000
 References: Low Cal 0.000 High Cal 20.000
 Readings: 0.005 1.010

Readings 0.003 1.210

2" Calibration: Gain=52.000 Offset=0.500

	Low Cal	High Cal
References	0.000	20.000
Readings	0.012	1.043

Gamma Ray Calibration Report

Serial Number:	GR3
Tool Model:	OPEN
Performed:	Thu Aug 04 05:49:54 2011

Calibrator Value:	200.0	GAPI
-------------------	-------	------

Background Reading:	3.0	cps
Calibrator Reading:	186.0	cps

Sensitivity:	1.0000	GAPI/cps
--------------	--------	----------